

World Journal of *Clinical Cases*

World J Clin Cases 2022 June 26; 10(18): 5934-6340



MINIREVIEWS

- 5934** Development of clustered regularly interspaced short palindromic repeats/CRISPR-associated technology for potential clinical applications
Huang YY, Zhang XY, Zhu P, Ji L
- 5946** Strategies and challenges in treatment of varicose veins and venous insufficiency
Gao RD, Qian SY, Wang HH, Liu YS, Ren SY
- 5957** Diabetes mellitus susceptibility with varied diseased phenotypes and its comparison with phenome interactome networks
Rout M, Kour B, Vuree S, Lulu SS, Medicherla KM, Suravajhala P

ORIGINAL ARTICLE**Clinical and Translational Research**

- 5965** Identification of potential key molecules and signaling pathways for psoriasis based on weighted gene co-expression network analysis
Shu X, Chen XX, Kang XD, Ran M, Wang YL, Zhao ZK, Li CX
- 5984** Construction and validation of a novel prediction system for detection of overall survival in lung cancer patients
Zhong C, Liang Y, Wang Q, Tan HW, Liang Y

Case Control Study

- 6001** Effectiveness and postoperative rehabilitation of one-stage combined anterior-posterior surgery for severe thoracolumbar fractures with spinal cord injury
Zhang B, Wang JC, Jiang YZ, Song QP, An Y

Retrospective Study

- 6009** Prostate sclerosing adenopathy: A clinicopathological and immunohistochemical study of twelve patients
Feng RL, Tao YP, Tan ZY, Fu S, Wang HF
- 6021** Value of magnetic resonance diffusion combined with perfusion imaging techniques for diagnosing potentially malignant breast lesions
Zhang H, Zhang XY, Wang Y
- 6032** Scar-centered dilation in the treatment of large keloids
Wu M, Gu JY, Duan R, Wei BX, Xie F
- 6039** Application of a novel computer-assisted surgery system in percutaneous nephrolithotomy: A controlled study
Qin F, Sun YF, Wang XN, Li B, Zhang ZL, Zhang MX, Xie F, Liu SH, Wang ZJ, Cao YC, Jiao W

- 6050** Influences of etiology and endoscopic appearance on the long-term outcomes of gastric antral vascular ectasia

Kwon HJ, Lee SH, Cho JH

Randomized Controlled Trial

- 6060** Evaluation of the clinical efficacy and safety of TST33 mega hemorrhoidectomy for severe prolapsed hemorrhoids

Tao L, Wei J, Ding XF, Ji LJ

- 6069** Sequential chemotherapy and icotinib as first-line treatment for advanced epidermal growth factor receptor-mutated non-small cell lung cancer

Sun SJ, Han JD, Liu W, Wu ZY, Zhao X, Yan X, Jiao SC, Fang J

Randomized Clinical Trial

- 6082** Impact of preoperative carbohydrate loading on gastric volume in patients with type 2 diabetes

Lin XQ, Chen YR, Chen X, Cai YP, Lin JX, Xu DM, Zheng XC

META-ANALYSIS

- 6091** Efficacy and safety of adalimumab in comparison to infliximab for Crohn's disease: A systematic review and meta-analysis

Yang HH, Huang Y, Zhou XC, Wang RN

CASE REPORT

- 6105** Successful treatment of acute relapse of chronic eosinophilic pneumonia with benralizumab and without corticosteroids: A case report

Izhakian S, Pertzov B, Rosengarten D, Kramer MR

- 6110** Pembrolizumab-induced Stevens-Johnson syndrome in advanced squamous cell carcinoma of the lung: A case report and review of literature

Wu JY, Kang K, Yi J, Yang B

- 6119** Hepatic epithelioid hemangioendothelioma after thirteen years' follow-up: A case report and review of literature

Mo WF, Tong YL

- 6128** Effectiveness and safety of ultrasound-guided intramuscular lauromacrogol injection combined with hysteroscopy in cervical pregnancy treatment: A case report

Ye JP, Gao Y, Lu LW, Ye YJ

- 6136** Carcinoma located in a right-sided sigmoid colon: A case report

Lyu LJ, Yao WW

- 6141** Subcutaneous infection caused by *Mycobacterium abscessus* following cosmetic injections of botulinum toxin: A case report

Deng L, Luo YZ, Liu F, Yu XH

- 6148** Overlapping syndrome of recurrent anti-N-methyl-D-aspartate receptor encephalitis and anti-myelin oligodendrocyte glycoprotein demyelinating diseases: A case report
Yin XJ, Zhang LF, Bao LH, Feng ZC, Chen JH, Li BX, Zhang J
- 6156** Liver transplantation for late-onset ornithine transcarbamylase deficiency: A case report
Fu XH, Hu YH, Liao JX, Chen L, Hu ZQ, Wen JL, Chen SL
- 6163** Disseminated strongyloidiasis in a patient with rheumatoid arthritis: A case report
Zheng JH, Xue LY
- 6168** CYP27A1 mutation in a case of cerebrotendinous xanthomatosis: A case report
Li ZR, Zhou YL, Jin Q, Xie YY, Meng HM
- 6175** Postoperative multiple metastasis of clear cell sarcoma-like tumor of the gastrointestinal tract in adolescent: A case report
Huang WP, Li LM, Gao JB
- 6184** Toripalimab combined with targeted therapy and chemotherapy achieves pathologic complete response in gastric carcinoma: A case report
Liu R, Wang X, Ji Z, Deng T, Li HL, Zhang YH, Yang YC, Ge SH, Zhang L, Bai M, Ning T, Ba Y
- 6192** Presentation of Boerhaave's syndrome as an upper-esophageal perforation associated with a right-sided pleural effusion: A case report
Tan N, Luo YH, Li GC, Chen YL, Tan W, Xiang YH, Ge L, Yao D, Zhang MH
- 6198** Camrelizumab-induced anaphylactic shock in an esophageal squamous cell carcinoma patient: A case report and review of literature
Liu K, Bao JF, Wang T, Yang H, Xu BP
- 6205** Nontraumatic convexal subarachnoid hemorrhage: A case report
Chen HL, Li B, Chen C, Fan XX, Ma WB
- 6211** Growth hormone ameliorates hepatopulmonary syndrome and nonalcoholic steatohepatitis secondary to hypopituitarism in a child: A case report
Zhang XY, Yuan K, Fang YL, Wang CL
- 6218** Vancomycin dosing in an obese patient with acute renal failure: A case report and review of literature
Xu KY, Li D, Hu ZJ, Zhao CC, Bai J, Du WL
- 6227** Insulinoma after sleeve gastrectomy: A case report
Lobaton-Ginsberg M, Sotelo-González P, Ramirez-Renteria C, Juárez-Aguilar FG, Ferreira-Hermosillo A
- 6234** Primary intestinal lymphangiectasia presenting as limb convulsions: A case report
Cao Y, Feng XH, Ni HX
- 6241** Esophagogastric junctional neuroendocrine tumor with adenocarcinoma: A case report
Kong ZZ, Zhang L

- 6247** Foreign body granuloma in the tongue differentiated from tongue cancer: A case report
Jiang ZH, Xu R, Xia L
- 6254** Modified endoscopic ultrasound-guided selective N-butyl-2-cyanoacrylate injections for gastric variceal hemorrhage in left-sided portal hypertension: A case report
Yang J, Zeng Y, Zhang JW
- 6261** Management of type IIb dens invaginatus using a combination of root canal treatment, intentional replantation, and surgical therapy: A case report
Zhang J, Li N, Li WL, Zheng XY, Li S
- 6269** Clivus-involved immunoglobulin G4 related hypertrophic pachymeningitis mimicking meningioma: A case report
Yu Y, Lv L, Yin SL, Chen C, Jiang S, Zhou PZ
- 6277** De novo brain arteriovenous malformation formation and development: A case report
Huang H, Wang X, Guo AN, Li W, Duan RH, Fang JH, Yin B, Li DD
- 6283** Coinfection of *Streptococcus suis* and *Nocardia asiatica* in the human central nervous system: A case report
Chen YY, Xue XH
- 6289** Dilated left ventricle with multiple outpouchings – a severe congenital ventricular diverticulum or left-dominant arrhythmogenic cardiomyopathy: A case report
Zhang X, Ye RY, Chen XP
- 6298** Spontaneous healing of complicated crown-root fractures in children: Two case reports
Zhou ZL, Gao L, Sun SK, Li HS, Zhang CD, Kou WW, Xu Z, Wu LA
- 6307** Thyroid follicular renal cell carcinoma excluding thyroid metastases: A case report
Wu SC, Li XY, Liao BJ, Xie K, Chen WM
- 6314** Appendiceal bleeding: A case report
Zhou SY, Guo MD, Ye XH
- 6319** Spontaneous healing after conservative treatment of isolated grade IV pancreatic duct disruption caused by trauma: A case report
Mei MZ, Ren YF, Mou YP, Wang YY, Jin WW, Lu C, Zhu QC
- 6325** Pneumonia and seizures due to hypereosinophilic syndrome – organ damage and eosinophilia without synchronisation: A case report
Ishida T, Murayama T, Kobayashi S
- 6333** Creutzfeldt-Jakob disease presenting with bilateral hearing loss: A case report
Na S, Lee SA, Lee JD, Lee ES, Lee TK

LETTER TO THE EDITOR

- 6338** Stem cells as an option for the treatment of COVID-19
Cuevas-González MV, Cuevas-González JC

ABOUT COVER

Editorial Board Member of *World Journal of Clinical Cases*, Cristina Tudoran, PhD, Assistant Professor, Department VII, Internal Medicine II, Discipline of Cardiology, "Victor Babes" University of Medicine and Pharmacy Timisoara, Timisoara 300041, Timis, Romania. cristina13.tudoran@gmail.com

AIMS AND SCOPE

The primary aim of *World Journal of Clinical Cases* (WJCC, *World J Clin Cases*) is to provide scholars and readers from various fields of clinical medicine with a platform to publish high-quality clinical research articles and communicate their research findings online.

WJCC mainly publishes articles reporting research results and findings obtained in the field of clinical medicine and covering a wide range of topics, including case control studies, retrospective cohort studies, retrospective studies, clinical trials studies, observational studies, prospective studies, randomized controlled trials, randomized clinical trials, systematic reviews, meta-analysis, and case reports.

INDEXING/ABSTRACTING

The WJCC is now indexed in Science Citation Index Expanded (also known as SciSearch®), Journal Citation Reports/Science Edition, Scopus, PubMed, and PubMed Central. The 2021 Edition of Journal Citation Reports® cites the 2020 impact factor (IF) for WJCC as 1.337; IF without journal self cites: 1.301; 5-year IF: 1.742; Journal Citation Indicator: 0.33; Ranking: 119 among 169 journals in medicine, general and internal; and Quartile category: Q3. The WJCC's CiteScore for 2020 is 0.8 and Scopus CiteScore rank 2020: General Medicine is 493/793.

RESPONSIBLE EDITORS FOR THIS ISSUE

Production Editor: *Ying-Yi Yuan*, Production Department Director: *Xu Guo*, Editorial Office Director: *Jin-Lei Wang*.

NAME OF JOURNAL

World Journal of Clinical Cases

ISSN

ISSN 2307-8960 (online)

LAUNCH DATE

April 16, 2013

FREQUENCY

Thrice Monthly

EDITORS-IN-CHIEF

Bao-Gan Peng, Jerzy Tadeusz Chudek, George Kontogeorgos, Maurizio Serati, Ja Hyeon Ku

EDITORIAL BOARD MEMBERS

<https://www.wjgnet.com/2307-8960/editorialboard.htm>

PUBLICATION DATE

June 26, 2022

COPYRIGHT

© 2022 Baishideng Publishing Group Inc

INSTRUCTIONS TO AUTHORS

<https://www.wjgnet.com/bpg/gerinfo/204>

GUIDELINES FOR ETHICS DOCUMENTS

<https://www.wjgnet.com/bpg/GerInfo/287>

GUIDELINES FOR NON-NATIVE SPEAKERS OF ENGLISH

<https://www.wjgnet.com/bpg/gerinfo/240>

PUBLICATION ETHICS

<https://www.wjgnet.com/bpg/GerInfo/288>

PUBLICATION MISCONDUCT

<https://www.wjgnet.com/bpg/gerinfo/208>

ARTICLE PROCESSING CHARGE

<https://www.wjgnet.com/bpg/gerinfo/242>

STEPS FOR SUBMITTING MANUSCRIPTS

<https://www.wjgnet.com/bpg/GerInfo/239>

ONLINE SUBMISSION

<https://www.f6publishing.com>



Postoperative multiple metastasis of clear cell sarcoma-like tumor of the gastrointestinal tract in adolescent: A case report

Wen-Peng Huang, Li-Ming Li, Jian-Bo Gao

Specialty type: Gastroenterology and hepatology

Provenance and peer review: Unsolicited article; Externally peer reviewed.

Peer-review model: Single blind

Peer-review report's scientific quality classification

Grade A (Excellent): 0
Grade B (Very good): B
Grade C (Good): 0
Grade D (Fair): D
Grade E (Poor): 0

P-Reviewer: Gabazza EC, Japan; Hashimoto K, Japan

Received: November 3, 2021

Peer-review started: November 3, 2021

First decision: November 19, 2021

Revised: November 25, 2021

Accepted: March 29, 2022

Article in press: March 29, 2022

Published online: June 26, 2022



Wen-Peng Huang, Li-Ming Li, Jian-Bo Gao, Department of Radiology, The First Affiliated Hospital of Zhengzhou University, Zhengzhou 450052, Henan Province, China

Corresponding author: Jian-Bo Gao, PhD, Academic Research, Chairman, Chief Doctor, Instructor, Department of Radiology, The First Affiliated Hospital of Zhengzhou University, No. 1 East Jianshe Road, Zhengzhou 450052, Henan Province, China.
jianbogaochina@163.com

Abstract

BACKGROUND

Clear cell sarcoma-like tumor of the gastrointestinal tract (CCSLGT) is a rare malignant gastrointestinal mesenchymal soft tissue tumor. Its genetic feature is *EWSR1* gene rearrangement. Histologically, it is often accompanied by a varying number of CD68-positive osteoclast-like giant cells. CCSLGT mostly occurs in the small intestinal wall of young people and children. In terms of clinical manifestations, there is no significant difference between it and other gastrointestinal tumors, and the diagnosis depends on immunohistochemistry and gene detection.

CASE SUMMARY

A 16-year-old man developed dizziness and fatigue 2 mo ago, and 10 d ago showed progressive exacerbation of paroxysmal epigastric pain and stopped flatulence and defecation. Computed tomography showed a soft tissue mass in the distal ileum. After complete resection of the lesion, it was diagnosed by combined immunohistochemical and genetic examination as CCSLGT. After surgery, the patient gradually developed lymph node, liver, lung, bone, left thigh, pleura and adrenal metastasis. The survival time was 4 years and 8 mo.

CONCLUSION

Whole abdominal computed tomography enhancement is recommended for patients with gastrointestinal symptoms. There is no effective treatment for CCSLGT with multiple metastases *via* the lymphatic system and bloodstream after surgical resection.

Key Words: Clear cell sarcoma-like tumor of the gastrointestinal tract; Metastasis; X-ray computed tomography; Case report

©The Author(s) 2022. Published by Baishideng Publishing Group Inc. All rights reserved.

Core Tip: Clear cell sarcoma-like tumor of the gastrointestinal tract (CCSLGT) is a rare malignant mesenchymal tumor with unique morphological, immunophenotypic and molecular genetic characteristics. Its clinical manifestations are unspecific, and the diagnosis depends on immunohistochemistry and gene testing. Positron emission tomography/computed tomography is recommended for patients with CCSLGT, which can provide functional and metabolic information in addition to anatomical information, and effectively reduce missed lesions. Currently, there is no effective treatment for CCSLGT.

Citation: Huang WP, Li LM, Gao JB. Postoperative multiple metastasis of clear cell sarcoma-like tumor of the gastrointestinal tract in adolescent: A case report. *World J Clin Cases* 2022; 10(18): 6175-6183

URL: <https://www.wjgnet.com/2307-8960/full/v10/i18/6175.htm>

DOI: <https://dx.doi.org/10.12998/wjcc.v10.i18.6175>

INTRODUCTION

Clear cell sarcoma-like tumor of the gastrointestinal tract (CCSLGT) is a rare malignant mesenchymal soft tissue tumor that can occur in any part of the gastrointestinal tract, mostly in the small intestinal wall, followed by the stomach, colon and peritoneum[1,2]. Zambrano *et al*[3] first reported in 2003 that, because of the characteristic appearance of osteoclast-like giant cells in the tumor, they believed that this type of tumor had some but not all of the characteristics of soft tissue clear cell sarcoma. The etiology and pathogenesis of CCSLGT are not clear. Its genetic feature is *EWSR1* gene rearrangement, which is seen in 81% of cases[4]. Histologically, CCSLGT shows diffuse sheet-like or irregular nest-like arrangement of interstitial tumor cells infiltrating the mucosal and plasma layers of the gastrointestinal wall, with visible pseudopapillary and pseudokryoid mass structures, mucus-like interstitium and focal necrosis, lightly stained or transparent cytoplasm, small or inconspicuous nucleoli, active mitosis, and scattered distribution of osteoblast-like multinucleated giant cells in about 50% of cases[5-7]. Immunohistochemistry was characterized by positive expression of Smur100 protein and SOX-10, but no expression of melanocyte markers such as HMB45 and Melan A. Dense secretory granules were seen in the ultrastructure, but no melanosomes were seen, suggesting neuroendocrine differentiation. CCSLGT is more common in young people and children; the age of onset is 5-81 years; there is no gender difference; the tumor can invade the serosa and even involve the surrounding organs; and the clinical manifestations are not significantly different from those of other gastrointestinal tumors. We here report a case of an adolescent with CCSLGT who developed multiple metastases in mesenteric lymph nodes, liver, lung, bone, left inner thigh, pleura, mediastinum, hilar lymph nodes, and adrenal gland after surgery, and had a poor prognosis with survival of no more than 5 years despite aggressive antitumor therapy. As far as we know, there are few reports in the English-language literature of multiple metastases in adolescent patients with CCSLGT after extensive resection. Clinicians should consider its highly invasive biological behavior and follow-up closely with whole-body imaging.

CASE PRESENTATION

Chief complaints

A 16-year-old man had dizziness and fatigue without obvious cause 2 mo ago. After strenuous exercise 15 d ago, dizziness was aggravated, with nausea and tinnitus.

History of present illness

Laboratory test results at a local hospital showed neutrophils ($6.35 \times 10^9/L$, normal level 1.80×10^9 - $6.30 \times 10^9/L$), erythrocytes ($3.91 \times 10^{12}/L$, normal level 4.80×10^9 - $5.80 \times 10^9/L$), platelets ($486 \times 10^{12}/L$, normal level 100×10^9 - $300 \times 10^9/L$), high sensitivity C-reactive protein (188.0 mg/L, normal level 0.5-10 mg/L), fecal occult blood test positive, and gastroscopy suggested erosive gastritis. No obvious abnormality was found on colonoscopy. The patient was diagnosed with gastrointestinal bleeding and hemorrhagic anemia. The patient presented with tolerable paroxysmal epigastric pain 10 d prior to hospital visit, but the abdominal pain worsened progressively when eating 10 h previously, and he came to our hospital for medical treatment. He had normal spirit and appetite, poor sleep, and normal defecation and urination, and a weight loss of 3 kg.

History of past illness

The patient was in good health.

Personal and family history

The patient had no family history of hereditary diseases.

Physical examination

On admission, he had pressure pain in the wall of the upper abdomen, and no rebound tenderness, bowel sounds at 8 beats/min.

Laboratory examinations

Laboratory test results showed elevated fibrinogen (5.72 g/L, normal level 2–4 g/L), but no obvious abnormality was found in tumor markers.

Imaging examinations

Abdominal digital radiography did not show any dilated loop of bowel to suggest bowel obstruction (Figure 1). Further contrast-enhanced computed tomography (CT) of the abdomen and pelvis showed obvious localized thickening of the ileal wall in the right lower abdomen, with soft tissue density mass, involving the intestinal wall with a length of approximately 4.1 cm, plain scan CT value of approximately 59 HU (Figure 2A), arterial phase CT value of approximately 78 HU (Figure 2B) and venous phase CT value of approximately 97 cm (Figure 2C), showing moderate uniform progressive enhancement. Multiplanar reformation (MPR) images showed that the mass in the intestinal wall grew inwards. The thickness of the mass was approximately 2.4 cm, and resulted in luminal narrowing. Several enlarged lymph nodes could be seen at the root of the mesentery, and the largest was approximately 2.8 cm in diameter (Figure 2D).

FINAL DIAGNOSIS

Combined with pathological morphology, immunohistochemistry and gene detection, the tumor was diagnosed as CCSLGT.

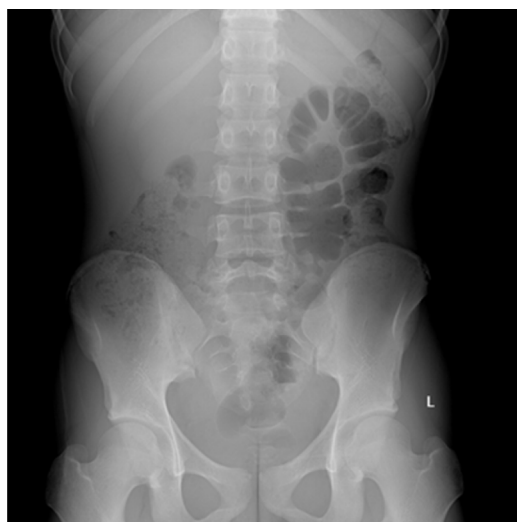
TREATMENT

The patient underwent resection of the small intestinal masses. During the operation, a solid and hard protuberant tumor was located in the ileum approximately 15 cm from the ileocecal part. The tumor of about 5 cm × 3.5 cm × 2 cm invaded the whole layer of the intestine; did not invade the surrounding organs; enlarged lymph nodes were seen at the root of the mesentery, with a size about 2 cm × 1 cm; dark red content could be seen in the distal intestine, and old bleeding was considered; and no abnormality was found in the liver and pelvis. The tumor and part of the small intestine were removed at 5 cm from both ends of the lesion, and the mesenteric and perienteric fat lymph nodes were dissected. The postoperative specimens were sent for pathological examination. Under light microscopy, the tumor cells were diffusely arranged and separated by a slender fibrous septum (Figure 3A). Immunohistochemical detection: AE1/AE3 (-), CK7 (focal ±), Smur100 (+) (Figure 3B), MelanA (-), HIB45 (-), CD34 (vascular +) (Figure 3C), CD117 (-), Dog-1 (-), CDX-2 (-), Villin (-), CK8/18 (-), LCA (-), CD10 (-), TFE-3 (-), SMA (-), desmin (-), MyoD1 (pulp ±), myogenin (pulp ±), NSE (pulp ±), Ki-67 (30% +) (Figure 3D). Fluorescence *in situ* hybridization (FISH) detected 100 tumor cells, and the number of positive cells for fluorescent labeling was 46%. Reverse transcription polymerase chain reaction regarding *EWS/ATF1* was positive to confirm our FISH experiment. According to the interpretation criteria, this case had *EWSR1* gene breakage (Figure 3E).

OUTCOME AND FOLLOW-UP

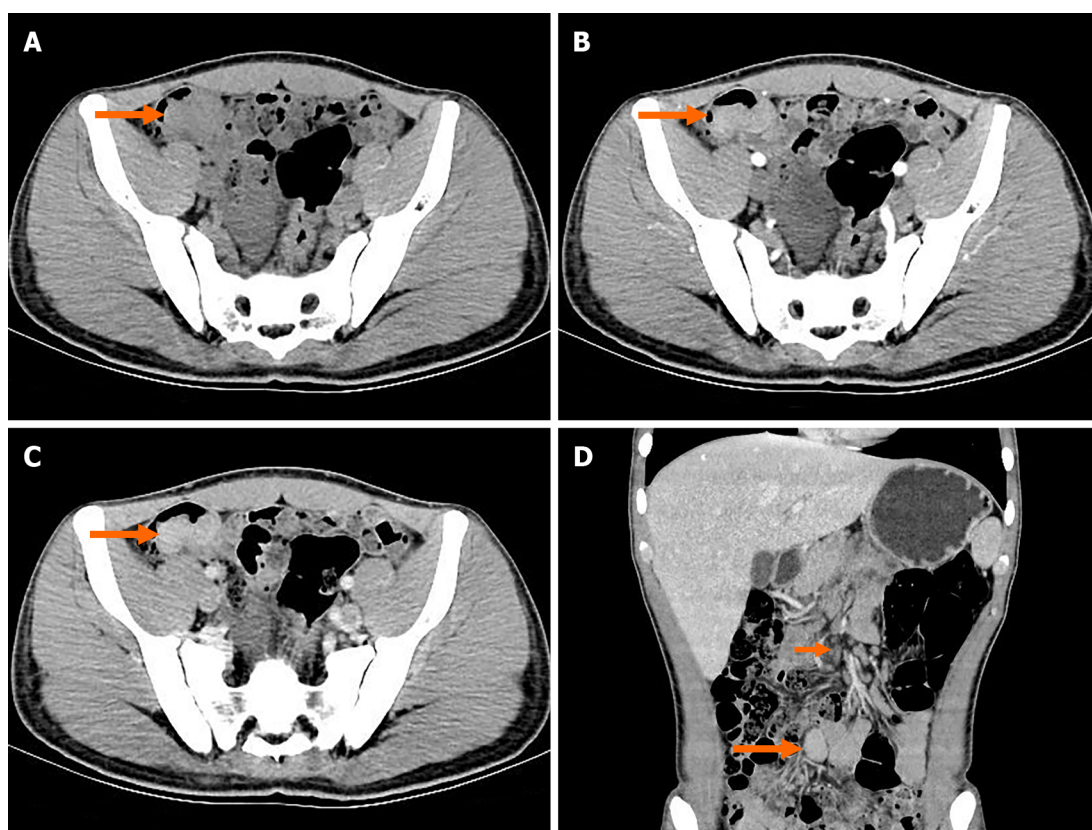
The patient was followed up regularly without adjuvant treatment. After 13 mo, he stopped defecation and flatulence and came to our hospital because of intermittent severe abdominal pain. CT examination showed multiple enlarged lymph nodes at the root of the mesentery (Figure 4A). Clinicians considered metastasis and carried out abdominal exploration. Tumors of 6.0 cm × 4.0 cm × 3.0 cm and 1.5 cm × 1.0 cm × 0.5 cm were found at the root of the retroperitoneal small intestine.

After surgical resection, the specimens were sent for pathological examination, combined with medical history and immunohistochemistry in accordance with CCSLGT mesenteric lymph node metastasis. Ultrasonography (US) 27 mo after the operation showed that the intrahepatic echo was hyperechoic (Figure 4B), and the internal echo was inhomogeneous, with a size of about 1.4 cm × 1.2 cm. There was no obvious blood flow signal on color Doppler flow imaging. Ultrasound-guided percutaneous hepatic space-occupying biopsy and radiofrequency ablation were performed, and the left lobe



DOI: 10.12998/wjcc.v10.i18.6175 Copyright ©The Author(s) 2022.

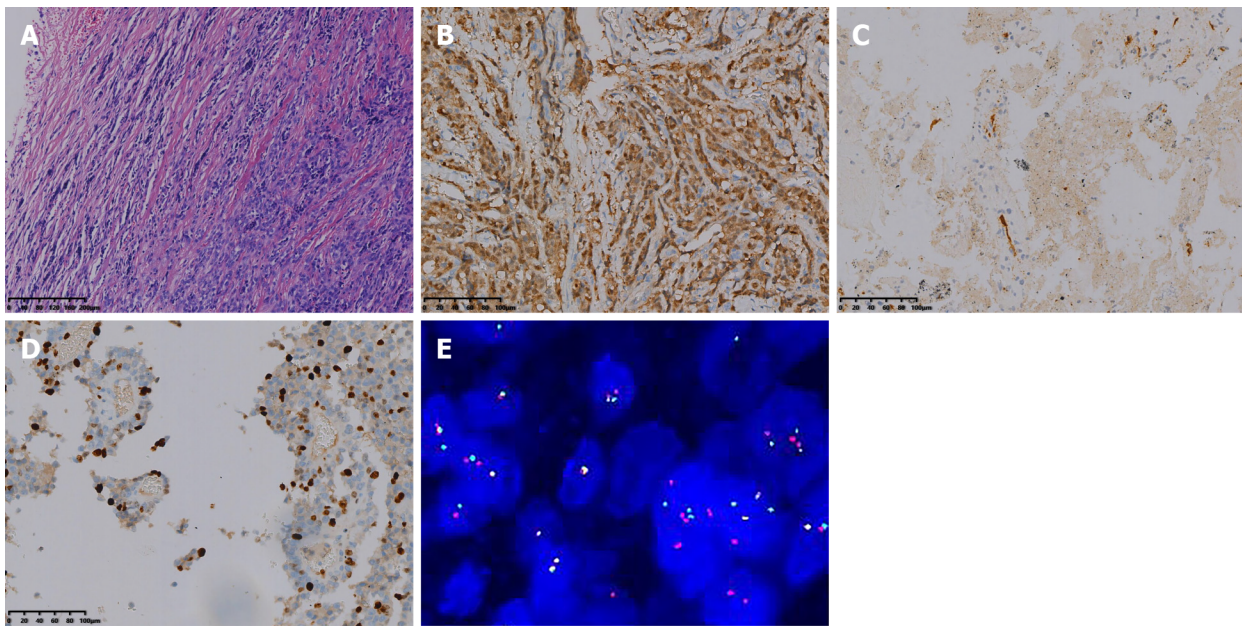
Figure 1 Digital radiography. There was no obvious manifestation of intestinal obstruction.



DOI: 10.12998/wjcc.v10.i18.6175 Copyright ©The Author(s) 2022.

Figure 2 Preoperative computed tomography. A: Obvious localized thickening of ileal wall in the right lower abdomen; B: The mass showed mild enhancement in the arterial phase; C: The mass showed moderate homogeneous progressive enhancement during the venous phase; D: The venous coronal images showed that the mass of the intestinal wall grew into the intestinal cavity; the intestinal cavity was obviously narrowed; and the lymph nodes at the root of the mesentery were enlarged.

nodules were ablated with hyperechoic coverage. The postoperative specimens were sent for pathological examination, which was consistent with CCSLGT liver metastasis. CT examination at 32 mo after the operation showed multiple solid and well-defined nodules in both lungs, and a patchy and nodular low-density mass in the liver, with unclear boundary, contrast enhancement in the ring but no obvious enhancement in the center (Figure 4C). The enlarged lymph nodes at the root of the mesentery were enlarged and increased compared with before.



DOI: 10.12998/wjcc.v10.i18.6175 Copyright ©The Author(s) 2022.

Figure 3 Optical microscopy and molecular pathology fluorescence *in situ* hybridization. A: The tumor cells were diffusely arranged, separated by a slender fibrous diaphragm [hematoxylin and eosin (HE) 200×]; B: Immunohistochemical staining revealed S-100 positivity (Envision, 200×); C: Immunohistochemical staining revealed CD34 positivity (Envision, 200×); D: Immunohistochemical staining revealed 30% positivity for Ki-67 (Envision, 200×); E: total of 100 tumor cells were detected and counted, and the number of positive cells was 46%. *EWSR1* gene breakage occurred in this case.

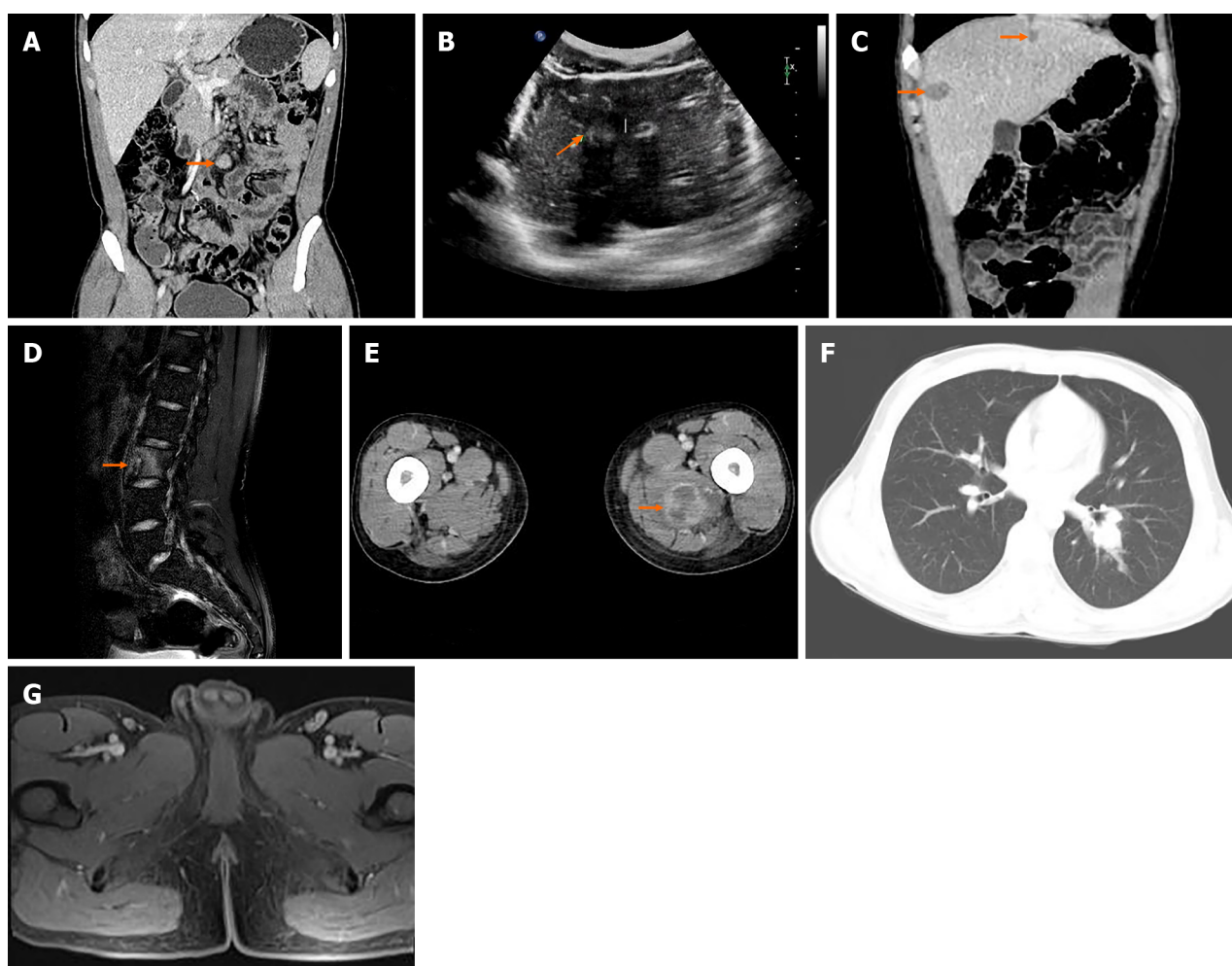
Contrast-enhanced US showed multiple areas of solid inhomogeneous hypoechogenicity adjacent to the superior mesenteric artery with clear boundaries. The larger areas were about 3.6 cm × 2.9 cm, and the enhancement was slow and uneven. Solid inhomogeneous areas of hypoechogenicity of 1.3 cm × 1.2 cm and 2.2 cm × 1.9 cm were seen under the capsule of the right anterior lobe and posterior lobe of the liver, respectively. The boundary was unclear, the arterial phase showed circular enhancement, and the enhancement in the portal vein and delayed phases decreased. Ultrasound-guided lymph node biopsy and radiofrequency ablation of enlarged lymph nodes adjacent to the superior mesenteric artery and radiofrequency ablation of liver space were performed. Postoperative pathology combined with medical history and immunohistochemistry were consistent with CCSLGT superior mesenteric artery paramesenteric lymph node metastasis.

At 35 mo after the operation, the patient found a mass on the inside of the left thigh, with hard texture, poor range of motion, traction-like pain in the left thigh, and tension in the posterior lumbar muscles with fluctuating pain, passive posture and limited activity, which lasted for 1 h. The symptoms gradually worsened. Magnetic resonance imaging (MRI) of lumbar vertebrae showed low signal intensity in T12, L1 and L3 vertebrae, slightly high signal intensity in T2-weighted imaging, and high signal intensity in L3 vertebrae on turbo inversion recovery magnitude fat pressing sequence (Figure 4D).

Whole-body ^{99m}Tc-methylene diphosphonate bone scintigraphy showed increased radiotracer uptake in L3 vertebral body (Figure 5), and bone metastasis was considered. The patient was treated regularly with intensity-modulated radiotherapy. CT showed more lesions in the liver, unclear cystic-solid, low-density, space-occupying lesion on the inner side of the left thigh, and uneven circular enhancement (Figure 4E). The maximum dimension was about 3.3 cm × 2.9 cm. Ultrasound-guided puncture biopsy and radiofrequency ablation of the mass in the medial thigh and radiofrequency ablation of the liver were performed. Postoperative pathology combined with morphology, immunohistochemistry and previous medical history were consistent with CCSLGT medial metastasis of the left thigh.

Thirty-nine months after the operation, the patient came to our hospital with recurrent fever, cough and expectoration for > 1 mo. The body temperature fluctuated from 38.0 to 39.5 °C. CT examination showed more multiple small nodules in both lungs than before (Figure 4F).

Forty-three months after the operation, pelvic MRI showed multiple diffuse restricted high signals in the bilateral inguinal area and adjacent iliac vessels, with mild MRI enhancement (Figure 4G). Re-examination by CT showed that the nodule of the left lower lobe was significantly enlarged and the boundary was unclear (Figure 6A). The size of the nodule was 2.5 cm × 3.5 cm, with mild inhomogeneous enhancement, and the left pleural soft tissue nodule showed enhancement (Figure 6B). Bilateral inguinal lymph nodes were enlarged and there was a small amount of fluid density in bilateral pleura and pericardium.



DOI: 10.12998/wjcc.v10.i18.6175 Copyright ©The Author(s) 2022.

Figure 4 Images at 13 mo, 27 mo, 32 mo, 35 mo, 39 mo, and 43 mo after surgery. A: Computed tomography 13 mo after surgery, multiple enlarged lymph nodes were seen at the root of the mesentery; B: Ultrasonography 27 mo after surgery, there was a higher echo with a clear boundary in the liver, and the internal echo was not uniform; C: Computed tomography 32 mo after surgery, there were multiple patchy and nodular low-density space-occupying lesions in the liver, the boundary was not clear, the ring was slightly enhanced, but there was no obvious enhancement in the center; D: Magnetic resonance imaging 35 mo after surgery, L3 vertebrae showed high signal intensity on turbo inversion recovery magnitude fat pressing sequence; E: Computed tomography 35 mo after surgery, the mass on the inner side of the left thigh showed inhomogeneous circular enhancement and the boundary was unclear; F: Computed tomography 39 mo after surgery, there were multiple small nodules in both lungs, the larger of which was located in the lower lobe of the left lung, with a diameter of ~1.9 cm; G: Magnetic resonance imaging 43 mo after surgery, multiple mild enhanced signals in bilateral inguinal area and adjacent iliac vessels.

CT examination at 50 mo after the operation showed an irregular mass in the lower lobe of the left lung, which was significantly larger in size than before (Figure 6C) and moderate enhancement (Figure 6D). Other nodules in both lungs were enlarged and increased in number, with multiple mediastinal, left hilar, and axillary lymphadenopathy (Figure 6E). Soft tissue nodules in the left pleura were enlarged, low-density soft tissue masses were seen in the left adrenal gland with a diameter of approximately 2.3 cm, and the boundary was unclear, moderately reinforced in a circular pattern (Figure 6F), with small pleural and pericardial effusion.

At 56 mo after the operation, the patient died of multiple metastases of CCSLGT.

DISCUSSION

The most common clinical manifestations of CCSLGT are abdominal pain, intestinal obstruction, accompanied by varying degrees of anemia, nausea, vomiting, weight loss and fatigue[2-4]. This patient was in good health, had no family history of tumors, and the symptoms were atypical at the beginning, because the primary tumor of the small intestine was rare. After an occult blood test was positive, the patient was examined by gastroscopy and colonoscopy, but not by enteroscopy. He was diagnosed with erosive gastritis with gastrointestinal bleeding, no small intestinal lesions were found, and antitumor treatment was delayed. Later, the patient developed paroxysmal epigastric pain, stopped flatulence and defecation, and no intestinal obstruction was found by digital radiography. Further CT enhancement



DOI: 10.12998/wjcc.v10.i18.6175 Copyright ©The Author(s) 2022.

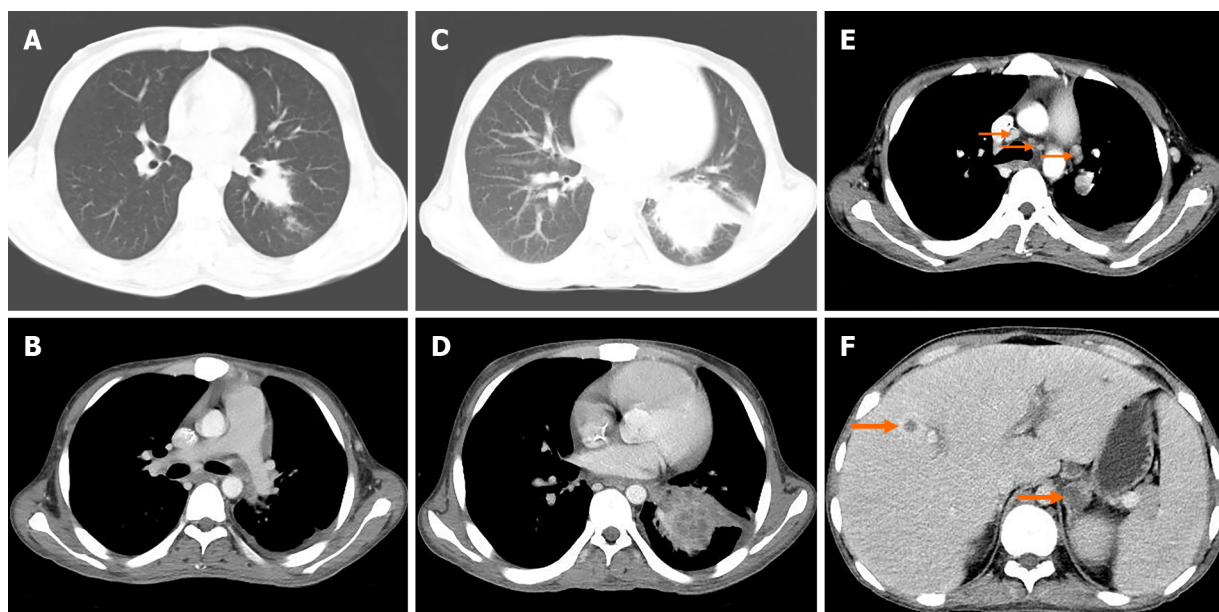
Figure 5 Whole-body ^{99m}Tc -methylene diphosphonate bone scan imaging 35 mo after surgery. A: Anterior posterior position image; B: Posterior anterior position image.

found a space-occupying soft tissue mass in the ileum. Therefore, patients with gastrointestinal symptoms should be examined by CT, which is beneficial for the detection of lesions in other parts of the body. The median diameter of CCSLGT is 45 mm, ranging from 15 mm to 135 mm. In general, it is multinodular and can be accompanied by hemorrhage, necrosis or cystic changes[4]. The present case was consistent with reports in the literature.

Histologically, tumor cells infiltrate between the walls of the gastrointestinal tract, often into the mucous membrane and serous layer, forming mucosal ulcers. CCSLGT consists of medium-sized tumor cells arranged in flaky or irregular nest-like structures separated by a slender fibrous diaphragm, pseudopapillary, pseudoglandular and pseudochoyranthemum-shaped structures and myxoid stroma, and occasionally pseudoangioma-like structures. Osteoclast-like multinucleated giant cells are scattered in approximately 50% of the cases[5-7]. Mitotic activity is significantly active in these tumors, accompanied by typical focal necrosis[8]. Stockman *et al*[7] reviewed and analyzed 16 cases of CCSLGT, and found that the tumor showed neurodifferentiation potential and expressed neuroendocrine markers, indicating that gastrointestinal CCS originated from neuroectodermal precursor cells and may have lost the ability of melanocyte differentiation. Therefore, a new name was proposed, malignant gastrointestinal neuroectodermal tumor.

The imaging findings of CCSLGT have rarely been reported. CT examination of our patient showed that the peripheral wall of the intestinal canal in the distal part of the right lower abdominal ileum was localized and thickened, the density was uniform, and no calcification or cystic necrosis was found. After MPR, the tumor showed strong invasive growth into the intestine, a clear boundary, obvious narrowing of the intestinal cavity and moderate progressive enhancement, which was different from that of traditional sarcomas. It may be associated with the presence of mucoid stroma in the tumor pathological tissue, which makes the contrast medium enter the tumor tissue slowly. Pathologically, the tumor invaded the whole layer of the intestinal wall, and the peri-intestinal fat was clear on CT images, and no invasion was found.

CCSLGT in the small intestine should be differentiated from small intestinal stromal tumor, small intestinal adenocarcinoma and small intestinal lymphoma. Small intestinal stromal tumors often occur in the jejunum, with characteristic expression of CD117. CT shows irregular or circular thickening of the intestinal wall, or manifested as a round or lobulated mass protruding from the intestinal lumen. The enhanced mass or thickened intestinal wall showed mild to moderate enhancement. CT of small intestinal adenocarcinoma shows irregular or circular thickening of the intestinal wall, irregular mucous



DOI: 10.12998/wjcc.v10.i18.6175 Copyright ©The Author(s) 2022.

Figure 6 Computed tomography 43 mo (A-B) and 50 mo (C-F) after surgery. A: The nodule of the lower lobe of the left lung was obviously enlarged, and the boundary was not clear. The size was about 2.5 cm × 3.5 cm; B: The soft tissue nodule of the left pleura showed slight enhancement, with a small amount of fluid density in the left pleural cavity; C: The irregular mass in the lower lobe of the left lung was significantly larger than before, with a size of about 8.2 cm × 5.7 cm; D: After enhancement, the focus showed moderate enhancement; E: Multiple enlarged lymph nodes in mediastinum, left hilum and left axilla; F: Low-density soft tissue mass of the left adrenal gland with unclear boundary and moderate circular enhancement.

membrane, or localized soft tissue masses protruding into the intestinal lumen, and mild to moderate enhancement of the mass or thickened intestinal wall. Most small intestinal lymphomas show diffuse uniform thickening of the intestinal wall, the involved intestinal segment is long and some of them show single or multiple polypoid masses protruding into the intestinal cavity, and most of them show mild to moderate homogeneous enhancement.

CCSLGT has highly invasive biological behavior, and local recurrence and distant metastasis readily occur in the later stage. Regional lymph nodes, lungs, bones and liver are the main sites of metastasis [9]. Currently, there is no effective treatment, and the main treatment is surgical resection. Even after treatment, CCSLGT usually relapses in a wide range of metastatic nodules and visceral diseases [10]. After extensive surgical resection, metastasis of mesenteric lymph nodes, liver, lung, bone, medial left thigh, pleura, mediastinum, hilar lymph nodes and adrenal gland gradually appeared in the present patient, indicating that CCSLGT metastasizes through lymph nodes and blood. Although our patient received active antitumor therapy, the survival time was < 5 years and his prognosis was poor. Disappointingly, conventional adriamycin-based chemotherapy for other non-small round cell soft tissue sarcomas is ineffective, and there is no report that postoperative radiotherapy and chemotherapy are helpful; therefore, larger prospective studies are needed to determine the best treatment options [11]. Although there are currently no effective treatments for this highly aggressive tumor, future targeted therapies that inhibit the function of the *EWSR1-CREB1* fusion oncogene or its associated downstream pathways may be effective in treating the disease. CT can accurately locate CCSLGT and provide the characteristics of lesion size, shape, internal structure and growth. It is of value in observing invasion of adjacent tissues and organs and lymph nodes, and distant metastasis. Positron emission tomography/CT is recommended for patients with CCSLGT, which can provide functional metabolic information beyond anatomical images and effectively reduce missed lesions.

CONCLUSION

In summary, Whole abdominal CT enhancement is recommended for patients with gastrointestinal symptoms. CCSLGT is a rare malignant mesenchymal tumor with unique morphological, there is no effective treatment for CCSLGT with systemic multiple metastases *via* the lymphatic system and bloodstream after surgical resection. immunophenotypic and molecular genetic characteristics. The clinical manifestations are not specific, and the diagnosis depends on immunohistochemistry and gene detection. Currently, there is no effective treatment. Clinicians should consider its highly aggressive biological behavior, follow it closely, and recommend regular postoperative whole-body imaging to reduce missed lesions. The diagnosis of this young patient with CCSLGT was clear. After active

antitumor treatment, the metastatic focus *in vivo* is still progressing, the survival time is short, and the prognosis is poor.

FOOTNOTES

Author contributions: Huang WP acquired and analysed of the work, drafted the manuscript, imaging data collection and analysis; Li LM edited the manuscript; Gao JB wrote and reviewed and edited the manuscript; all authors met the requirements for authorship for the submitted version and agreed to its submission.

Informed consent statement: The study was approved by the Institutional Review Board at The First Affiliated Hospital of Zhengzhou University. Participant gave written consent to participate in the study.

Conflict-of-interest statement: The authors declare that they have no competing interests.

CARE Checklist (2016) statement: The authors have read the CARE Checklist (2016), and the manuscript was prepared and revised according to the CARE Checklist (2016).

Open-Access: This article is an open-access article that was selected by an in-house editor and fully peer-reviewed by external reviewers. It is distributed in accordance with the Creative Commons Attribution NonCommercial (CC BY-NC 4.0) license, which permits others to distribute, remix, adapt, build upon this work non-commercially, and license their derivative works on different terms, provided the original work is properly cited and the use is non-commercial. See: <https://creativecommons.org/licenses/by-nc/4.0/>

Country/Territory of origin: China

ORCID number: Wen-Peng Huang 0000-0002-9104-1494; Li-Ming Li 0000-0002-2910-9742; Jian-Bo Gao 0000-0003-2621-3701.

S-Editor: Ma YJ

L-Editor: A

P-Editor: Ma YJ

REFERENCES

- 1 Taminelli L, Zaman K, Gengler C, Peloponissios N, Bouzourene H, Coindre JM, Hostein I, Guillo L. Primary clear cell sarcoma of the ileum: an uncommon and misleading site. *Virchows Arch* 2005; **447**: 772-777 [PMID: 16021514 DOI: 10.1007/s00428-005-0019-y]
- 2 Huang W, Zhang X, Li D, Chen J, Meng K, Wang Y, Lu Z, Zhou X. Osteoclast-rich tumor of the gastrointestinal tract with features resembling those of clear cell sarcoma of soft parts. *Virchows Arch* 2006; **448**: 200-203 [PMID: 16220298 DOI: 10.1007/s00428-005-0051-y]
- 3 Zambrano E, Reyes-Mugica M, Franchi A, Rosai J. An osteoclast-rich tumor of the gastrointestinal tract with features resembling clear cell sarcoma of soft parts: reports of 6 cases of a GIST simulator. *Int J Surg Pathol* 2003; **11**: 75-81 [PMID: 12754623 DOI: 10.1177/106689690301100202]
- 4 Green C, Spagnolo DV, Robbins PD, Fermoye S, Wong DD. Clear cell sarcoma of the gastrointestinal tract and malignant gastrointestinal neuroectodermal tumour: distinct or related entities? *Pathology* 2018; **50**: 490-498 [PMID: 29970252 DOI: 10.1016/j.pathol.2018.05.001]
- 5 Askan G, Kombak FE, Seven IE, Basturk O. Clear Cell Sarcoma-Like Tumor of the Gastrointestinal Tract. *J Gastrointest Cancer* 2019; **50**: 651-656 [PMID: 29623567 DOI: 10.1007/s12029-018-0069-4]
- 6 Wang J, Thway K. Clear cell sarcoma-like tumor of the gastrointestinal tract: an evolving entity. *Arch Pathol Lab Med* 2015; **139**: 407-412 [PMID: 25724038 DOI: 10.5858/arpa.2013-0547-RS]
- 7 Stockman DL, Miettinen M, Suster S, Spagnolo D, Dominguez-Malagon H, Hornick JL, Adsay V, Chou PM, Amanuel B, Vantuinen P, Zambrano EV. Malignant gastrointestinal neuroectodermal tumor: clinicopathologic, immunohistochemical, ultrastructural, and molecular analysis of 16 cases with a reappraisal of clear cell sarcoma-like tumors of the gastrointestinal tract. *Am J Surg Pathol* 2012; **36**: 857-868 [PMID: 22592145 DOI: 10.1097/PAS.0b013e31824644ac]
- 8 Gahanbani Ardakani A, Boyle DJ, Elton C. Gastrointestinal clear cell sarcoma-like tumour of the ascending colon. *Ann R Coll Surg Engl* 2016; **98**: e37-e39 [PMID: 26890846 DOI: 10.1308/rcsann.2016.0073]
- 9 Hisaoka M, Ishida T, Kuo TT, Matsuyama A, Imamura T, Nishida K, Kuroda H, Inayama Y, Oshiro H, Kobayashi H, Nakajima T, Fukuda T, Ae K, Hashimoto H. Clear cell sarcoma of soft tissue: a clinicopathologic, immunohistochemical, and molecular analysis of 33 cases. *Am J Surg Pathol* 2008; **32**: 452-460 [PMID: 18300804 DOI: 10.1097/PAS.0b013e31814b18fb]
- 10 Thway K, Judson I, Fisher C. Clear cell sarcoma-like tumor of the gastrointestinal tract, presenting as a second malignancy after childhood hepatoblastoma. *Case Rep Med* 2014; **2014**: 984369 [PMID: 24715928 DOI: 10.1155/2014/984369]
- 11 Kawai A, Hosono A, Nakayama R, Matsumine A, Matsumoto S, Ueda T, Tsuchiya H, Beppu Y, Morioka H, Yabe H; Japanese Musculoskeletal Oncology Group. Clear cell sarcoma of tendons and aponeuroses: a study of 75 patients. *Cancer* 2007; **109**: 109-116 [PMID: 17133413 DOI: 10.1002/encr.22380]



Published by **Baishideng Publishing Group Inc**
7041 Koll Center Parkway, Suite 160, Pleasanton, CA 94566, USA

Telephone: +1-925-3991568

E-mail: bpgoffice@wjgnet.com

Help Desk: <https://www.f6publishing.com/helpdesk>

<https://www.wjgnet.com>

