

World Journal of *Clinical Cases*

World J Clin Cases 2022 August 16; 10(23): 8057-8431



Contents

Thrice Monthly Volume 10 Number 23 August 16, 2022

OPINION REVIEW

- 8057** Invasive intervention timing for infected necrotizing pancreatitis: Late invasive intervention is not late for collection

Xiao NJ, Cui TT, Liu F, Li W

- 8063** Clinical utility of left atrial strain in predicting atrial fibrillation recurrence after catheter ablation: An up-to-date review

Yu ZX, Yang W, Yin WS, Peng KX, Pan YL, Chen WW, Du BB, He YQ, Yang P

MINIREVIEWS

- 8076** Gut microbiota and COVID-19: An intriguing pediatric perspective

Valentino MS, Esposito C, Colosimo S, Caprio AM, Puzone S, Guarino S, Marzuillo P, Miraglia del Giudice E, Di Sessa A

- 8088** Beta receptor blocker therapy for the elderly in the COVID-19 era

Santillo E, Migale M

ORIGINAL ARTICLE

Retrospective Cohort Study

- 8097** Nonselective beta-blocker use is associated with increased hepatic encephalopathy-related readmissions in cirrhosis

Fallahzadeh MA, Asrani SK, Tapper EB, Saracino G, Rahimi RS

Retrospective Study

- 8107** Different squatting positions after total knee arthroplasty: A retrospective study

Li TJ, Sun JY, Du YQ, Shen JM, Zhang BH, Zhou YG

- 8115** Outcomes of seromuscular bladder augmentation compared with standard bladder augmentation in the treatment of children with neurogenic bladder

Sun XG, Li YX, Ji LF, Xu JL, Chen WX, Wang RY

- 8124** Distinctive clinical features of spontaneous pneumoperitoneum in neonates: A retrospective analysis

Kim SH, Cho YH, Kim HY

- 8133** Cognitive training for elderly patients with early Alzheimer's disease in the Qinghai-Tibet Plateau: A pilot study

Wang XH, Luo MQ

- 8141** Diagnostic value of elevated serum carbohydrate antigen 125 level in sarcoidosis

Zhang Q, Jing XY, Yang XY, Xu ZJ

- 8152** Evaluation of progressive early rehabilitation training mode in intensive care unit patients with mechanical ventilation

Qie XJ, Liu ZH, Guo LM

- 8161** Comparison of demographic features and laboratory parameters between COVID-19 deceased patients and surviving severe and critically ill cases

Wang L, Gao Y, Zhang ZJ, Pan CK, Wang Y, Zhu YC, Qi YP, Xie FJ, Du X, Li NN, Chen PF, Yue CS, Wu JH, Wang XT, Tang YJ, Lai QQ, Kang K

Clinical Trials Study

- 8170** Role of H₂receptor blocker famotidine over the clinical recovery of COVID-19 patients: A randomized controlled trial

Mohiuddin Chowdhury ATM, Kamal A, Abbas MKU, Karim MR, Ali MA, Talukder S, Hamidullah Mehedi H, Hassan H, Shahin AH, Li Y, He S

Observational Study

- 8186** Short-term prognostic factors for hepatitis B virus-related acute-on-chronic liver failure

Ye QX, Huang JF, Xu ZJ, Yan YY, Yan Y, Liu LG

- 8196** Three-dimensional psychological guidance combined with evidence-based health intervention in patients with liver abscess treated with ultrasound

Shan YN, Yu Y, Zhao YH, Tang LL, Chen XM

- 8205** Role of serum β 2-microglobulin, glycosylated hemoglobin, and vascular endothelial growth factor levels in diabetic nephropathy

Yang B, Zhao XH, Ma GB

SYSTEMATIC REVIEWS

- 8212** Gallbladder neuroendocrine carcinoma diagnosis, treatment and prognosis based on the SEER database: A literature review

Cai XC, Wu SD

CASE REPORT

- 8224** Sepsis complicated with secondary hemophagocytic syndrome induced by giant gouty tophi rupture: A case report

Lai B, Pang ZH

- 8232** Spontaneous remission of autoimmune pancreatitis: Four case reports

Zhang BB, Huo JW, Yang ZH, Wang ZC, Jin EH

- 8242** Epstein-Barr-virus-associated hepatitis with aplastic anemia: A case report

Zhang WJ, Wu LQ, Wang J, Lin SY, Wang B

- 8249** Aspiration as the first-choice procedure for airway management in an infant with large epiglottic cysts: A case report

Zheng JQ, Du L, Zhang WY

- 8255** Sequential multidisciplinary minimally invasive therapeutic strategy for heart failure caused by four diseases: A case report
Zhao CZ, Yan Y, Cui Y, Zhu N, Ding XY
- 8262** Primary ascending colon cancer accompanying skip metastases in left shoulder skin and left neck lymph node: A case report
Zhou JC, Wang JJ, Liu T, Tong Q, Fang YJ, Wu ZQ, Hong Q
- 8271** Clinical and genetic study of ataxia with vitamin E deficiency: A case report
Zhang LW, Liu B, Peng DT
- 8277** Complete resection of large-cell neuroendocrine and hepatocellular carcinoma of the liver: A case report
Noh BG, Seo HI, Park YM, Kim S, Hong SB, Lee SJ
- 8284** Immunotherapy combined with antiangiogenic agents in patients with advanced malignant pleural mesothelioma: A case report
Xuan TT, Li GY, Meng SB, Wang ZM, Qu LL
- 8291** Bladder malacoplakia: A case report
Wang HK, Hang G, Wang YY, Wen Q, Chen B
- 8298** Delayed inflammatory response evoked in nasal alloplastic implants after COVID-19 vaccination: A case report
Seo MG, Choi EK, Chung KJ
- 8304** Phosphoglyceride crystal deposition disease requiring differential diagnosis from malignant tumors and confirmed by Raman spectroscopy: A case report
Ohkura Y, Uruga H, Shiiba M, Ito S, Shimoyama H, Ishihara M, Ueno M, Udagawa H
- 8312** Vulvovaginal myeloid sarcoma with massive pelvic floor infiltration: A case report and review of literature
Wang JX, Zhang H, Ning G, Bao L
- 8323** Femoral neck stress fracture and medial tibial stress syndrome following high intensity interval training: A case report and review of literature
Tan DS, Cheung FM, Ng D, Cheung TLA
- 8330** Periosteal chondroma of the rib: A case report
Gao Y, Wang JG, Liu H, Gao CP
- 8336** Papillary thyroid carcinoma occurring with undifferentiated pleomorphic sarcoma: A case report
Lee YL, Cheng YQ, Zhu CF, Huo HZ
- 8344** Laparoscopic treatment of bilateral duplex kidney and ectopic ureter: A case report
Wang SB, Wan L, Wang Y, Yi ZJ, Xiao C, Cao JZ, Liu XY, Tang RP, Luo Y
- 8352** Incontinentia pigmenti with intracranial arachnoid cyst: A case report
Li WC, Li ML, Ding JW, Wang L, Wang SR, Wang YY, Xiao LF, Sun T

- 8360** Relapsing polychondritis causing breathlessness: Two case reports
Zhai SY, Zhang YH, Guo RY, Hao JW, Wen SX
- 8367** Endodontic management of a fused left maxillary second molar and two paramolars using cone beam computed tomography: A case report
Mei XH, Liu J, Wang W, Zhang QX, Hong T, Bai SZ, Cheng XG, Tian Y, Jiang WK
- 8375** Infant biliary cirrhosis secondary to a biliary inflammatory myofibroblastic tumor: A case report and review of literature
Huang Y, Shu SN, Zhou H, Liu LL, Fang F
- 8384** Metastatic low-grade endometrial stromal sarcoma with variable morphologies in the ovaries and mesentery: A case report
Yu HY, Jin YL
- 8392** Bronchogenic cysts with infection in the chest wall skin of a 64-year-old asymptomatic patient: A case report
Ma B, Fu KW, Xie XD, Cheng Y, Wang SQ
- 8400** Incidental accumulation of Technetium-99m pertechnetate in subacute cerebral infarction: A case report
Han YH, Jeong HJ, Kang HG, Lim ST
- 8406** Metal stent combined with ileus drainage tube for the treatment of delayed rectal perforation: A case report
Cheng SL, Xie L, Wu HW, Zhang XF, Lou LL, Shen HZ
- 8417** Using ketamine in a patient with a near-occlusion tracheal tumor undergoing tracheal resection and reconstruction: A case report
Xu XH, Gao H, Chen XM, Ma HB, Huang YG

LETTER TO THE EDITOR

- 8422** Reflections on the prevalence of human leukocyte antigen-B27 and human leukocyte antigen-B51 co-occurrence in patients with spondylarthritis
Gonçalves Júnior J, Sampaio-Barros PD, Shinjo SK
- 8425** Comment on "Disease exacerbation is common in inflammatory bowel disease patients treated with immune checkpoint inhibitors for malignancy"
Argyriou K, Kotsakis A
- 8428** Intranasal sufentanil combined with intranasal dexmedetomidine: A promising method for non-anesthesiologist sedation during endoscopic ultrasonography
Wang Y, Ge ZJ, Han C

ABOUT COVER

Editorial Board Member of *World Journal of Clinical Cases*, Peng Liang, MD, Associate Professor, Day Surgery Center, Department of Anesthesiology, West China Hospital of Sichuan University, Chengdu 610041, Sichuan Province, China. 39485572@qq.com

AIMS AND SCOPE

The primary aim of *World Journal of Clinical Cases* (WJCC, *World J Clin Cases*) is to provide scholars and readers from various fields of clinical medicine with a platform to publish high-quality clinical research articles and communicate their research findings online.

WJCC mainly publishes articles reporting research results and findings obtained in the field of clinical medicine and covering a wide range of topics, including case control studies, retrospective cohort studies, retrospective studies, clinical trials studies, observational studies, prospective studies, randomized controlled trials, randomized clinical trials, systematic reviews, meta-analysis, and case reports.

INDEXING/ABSTRACTING

The WJCC is now abstracted and indexed in Science Citation Index Expanded (SCIE, also known as SciSearch®), Journal Citation Reports/Science Edition, Current Contents®/Clinical Medicine, PubMed, PubMed Central, Scopus, Reference Citation Analysis, China National Knowledge Infrastructure, China Science and Technology Journal Database, and Superstar Journals Database. The 2022 Edition of Journal Citation Reports® cites the 2021 impact factor (IF) for WJCC as 1.534; IF without journal self cites: 1.491; 5-year IF: 1.599; Journal Citation Indicator: 0.28; Ranking: 135 among 172 journals in medicine, general and internal; and Quartile category: Q4. The WJCC's CiteScore for 2021 is 1.2 and Scopus CiteScore rank 2021: General Medicine is 443/826.

RESPONSIBLE EDITORS FOR THIS ISSUE

Production Editor: Hua-Ge Yin; Production Department Director: Xiang Li; Editorial Office Director: Jin-Lei Wang.

NAME OF JOURNAL

World Journal of Clinical Cases

ISSN

ISSN 2307-8960 (online)

LAUNCH DATE

April 16, 2013

FREQUENCY

Thrice Monthly

EDITORS-IN-CHIEF

Bao-Gan Peng, Jerzy Tadeusz Chudek, George Kontogeorgos, Maurizio Serati, Ja Hyeon Ku

EDITORIAL BOARD MEMBERS

<https://www.wjnet.com/2307-8960/editorialboard.htm>

PUBLICATION DATE

August 16, 2022

COPYRIGHT

© 2022 Baishideng Publishing Group Inc

INSTRUCTIONS TO AUTHORS

<https://www.wjnet.com/bpg/gerinfo/204>

GUIDELINES FOR ETHICS DOCUMENTS

<https://www.wjnet.com/bpg/GerInfo/287>

GUIDELINES FOR NON-NATIVE SPEAKERS OF ENGLISH

<https://www.wjnet.com/bpg/gerinfo/240>

PUBLICATION ETHICS

<https://www.wjnet.com/bpg/GerInfo/288>

PUBLICATION MISCONDUCT

<https://www.wjnet.com/bpg/gerinfo/208>

ARTICLE PROCESSING CHARGE

<https://www.wjnet.com/bpg/gerinfo/242>

STEPS FOR SUBMITTING MANUSCRIPTS

<https://www.wjnet.com/bpg/GerInfo/239>

ONLINE SUBMISSION

<https://www.f6publishing.com>



Retrospective Study

Outcomes of seromuscular bladder augmentation compared with standard bladder augmentation in the treatment of children with neurogenic bladder

Xiao-Gang Sun, Yan-Xia Li, Long-Fei Ji, Jia-Long Xu, Wei-Xiu Chen, Ruo-Yi Wang

Specialty type: Urology and nephrology

Provenance and peer review:

Unsolicited article; Externally peer reviewed.

Peer-review model: Single blind

Peer-review report's scientific quality classification

Grade A (Excellent): 0
Grade B (Very good): B
Grade C (Good): C
Grade D (Fair): 0
Grade E (Poor): 0

P-Reviewer: Chamie K, United States; Daneshm S, United States

Received: December 11, 2021

Peer-review started: December 11, 2021

First decision: January 10, 2022

Revised: January 21, 2022

Accepted: July 16, 2022

Article in press: July 16, 2022

Published online: August 16, 2022



Xiao-Gang Sun, Jia-Long Xu, Wei-Xiu Chen, Ruo-Yi Wang, Department of Pediatric Surgery, The Second Hospital, Cheeloo College of Medicine, Shandong University, Jinan 250033, Shandong Province, China

Yan-Xia Li, Department of Neurology, Shandong Second Provincial General Hospital, Shandong Provincial ENT Hospital, Jinan 250011, Shandong Province, China

Long-Fei Ji, Department of Pediatric Surgery, Dongying District People's Hospital, Dongying 257000, Shandong Province, China

Corresponding author: Ruo-Yi Wang, MD, Professor, Department of Pediatric Surgery, The Second Hospital, Cheeloo College of Medicine, Shandong University, No. 247 Beiyuan, Jinan 250033, Shandong Province, China. sxg17660082198@163.com

Abstract

BACKGROUND

Intestinal seromuscular bladder augmentation (SMBA) surgery has produced no mucosal-related complications, but its outcomes need to be studied.

AIM

To evaluate the safety and effectiveness of SMBA in the treatment of children with neurogenic bladder.

METHODS

A retrospective analysis of the clinical data of children with SMBA was performed from March 2008 to February 2018, and the data were compared with those of children receiving standard cystoplasty (SC).

RESULTS

In a cohort of 67 children who underwent bladder augmentation, the 46 children in the SC group had an average age of 10.6 years and a follow-up time of 36 mo, and the 21 children in the SMBA group had an average age of 7.6 years and a follow-up time of 29.7 mo. The preoperative and postoperative bladder volumes in the SMBA group were 151.7 mL and 200.4 mL, respectively, and those in the SC group were 173.9 mL and 387.0 mL, respectively. No significant difference in preoperative urinary dynamic parameters was found between the two groups,

but the difference after operation was statistically significant. The main complications after SMBA were residual ureteral reflux and failed bladder augmentation, with incidences of 33.3% and 28.6%, respectively. In all 6 patients with failed augmentation in the SMBA group, ileum seromuscular patches were used for augmentation, and SC was chosen for reaugmentation. During reoperation, patch contracture and fibrosis were observed.

CONCLUSION

The improvement of urinary dynamic parameters in the SMBA group was significantly lower than that in the SC group. Children with SMBA had a higher probability of patch contracture and reaugmentation, which might be related to impaired blood supply and urine stimulation, and the sigmoid colon patch should be the priority.

Key Words: Neurogenic bladder; Seromuscular bladder augmentation; Bladder; Surgery; Urinary dynamic parameter

©The Author(s) 2022. Published by Baishideng Publishing Group Inc. All rights reserved.

Core Tip: We performed a retrospective review of the mid-term outcomes of patients undergoing two bladder augmentation procedures for neurogenic bladder in a single institution. We studied a total of 67 patients who underwent standard cystoplasty (SC) or seromuscular bladder augmentation (SMBA). In the SMBA procedure, a double-layer intestinal seromuscular patch was used. We found that the improvement of urinary dynamic parameters in the SMBA group was significantly lower than that in the SC group. Children with SMBA had a higher probability of patch contracture and reaugmentation, which might be related to impaired blood supply and urine stimulation.

Citation: Sun XG, Li YX, Ji LF, Xu JL, Chen WX, Wang RY. Outcomes of seromuscular bladder augmentation compared with standard bladder augmentation in the treatment of children with neurogenic bladder. *World J Clin Cases* 2022; 10(23): 8115-8123

URL: <https://www.wjgnet.com/2307-8960/full/v10/i23/8115.htm>

DOI: <https://dx.doi.org/10.12998/wjcc.v10.i23.8115>

INTRODUCTION

Neurogenic bladder in children is mainly caused by spina bifida and manifests as abnormal urination, upper urinary tract dysfunction and even renal failure. Children with failed conservative treatment require bladder augmentation, which may protect upper urinary tract function, improve urodynamic parameters, and relieve urinary incontinence[1,2].

Intestinal bladder augmentation is widely used for neurogenic bladder with good results and is considered to be standard cystoplasty (SC). However, due to the mucous secretion and reabsorption function of the intestinal mucosa, many related complications occur, including bacteriuria and mucus urine, urinary tract infections, bladder stones, cancer, electrolyte disorders, acidosis, metabolic abnormalities, and vitamin B12 deficiency. In 1955, Shoemaker *et al*[3] performed an animal experiment in which the intestinal seromuscular patch was sutured to the bladder, and postoperative pathological examination showed that the seromuscular patch was covered by transitional epithelium. Seromuscular bladder augmentation (SMBA) can effectively expand the bladder capacity and avoid complications related to integrating the intestinal mucosa in the bladder[4] but has only been reported in a few institutions. This study retrospectively analyzed the clinical data of children who underwent SMBA at our institution from March 2008 to February 2018 and compared the data with those of children in whom SC was completed during the same period to evaluate the safety and effectiveness of SMBA in the treatment of neurogenic bladder.

MATERIALS AND METHODS

Study population

Informed consent was obtained from the patients, and ethics approval was granted by the Institutional Review Board. The clinical data of children with bladder augmentation for neurogenic bladder at our institution from March 2008 to February 2018 were collected, including demographic data, clinical symptoms, urodynamic examination, perioperative management, follow-up time, and complications.

The indications for bladder augmentation were small bladder volume, bladder hypertension, low compliance, progressive deterioration of upper urinary tract function, persistent urinary incontinence that was not responsive to oral medication and intermittent catheterization[5]. The indication for ureteral reimplantation was high-grade reflux (grade III–V). For children with severe spinal and lower limb deformities, continent urinary stoma was recommended.

According to the different augmentation procedures, the children were divided into two groups: the SC group and the SMBA group. The parents were informed of the risks and complications of the two operations, and then they chose one procedure and signed the informed consent form. The advantages of the SC procedure were that it could effectively expand the volume, reduce pressure, and improve incontinence. The disadvantages were mucus urine, urinary tract infection, bladder stones, cancer, and metabolic abnormalities. The advantages of the SMBA procedure were that there were no mucus-related complications, and the disadvantages were postoperative urinary leakage and risk of patch contracture.

Inclusion and exclusion criteria

The inclusion criteria were as follows: Children who had undergone bladder augmentation for neurogenic bladder in whom the bladder augmentation procedure was SC or SMBA. The exclusion criteria were as follows: (1) Children who had undergone bladder augmentation for nonneurogenic bladder; and (2) Children who had undergone other bladder augmentation procedures.

Surgical procedure and postoperative treatment

The surgical procedure of SC was as follows: the bladder was incised, 20 cm intestinal (ileum or sigmoid colon) segments were isolated and reconfigured, and then the whole layer patch was sutured with the bladder edge (Figure 1A). In SMBA, 30 cm intestinal (ileum or sigmoid colon) segments were isolated. After de-epithelialization, the double-layer intestine seromuscular patch was sutured with the bladder incisional edge (Figure 1B).

Fasting was required for 5 d after the operation, followed by a gradual return to a normal diet. The drainage catheter of the bladder was removed 2 wk after the operation, and then intermittent catheterization was commenced. Six months after surgery, the patients were followed up regarding urinary tract infection, the number of clean intermittent catheterizations (CICs) per day, anticholinergic drugs, ultrasound, urodynamic examination, and cystography, and then they were recommended for follow-up once a year. If the postoperative end-filling pressure was higher than 20 cm H₂O, anticholinergic drugs [tetrodine (dose: 0.1 mg/kg/d, taken twice a day) or sorinacine (dose: 0.1 mg/kg/d, taken once a day)] were administered. CIC was recommended for each patient after surgery.

Evaluations

Continence or dryness was defined as occasional leakage with at most one pad per day, and quality of life was not disturbed. Urinary incontinence was defined as the leakage of urine needing more than one pad every day under regular CIC. Recurrent urinary tract infection (UTI) was defined as 3 times or more symptomatic bacteriuria with fever or pain in the kidney area. Deterioration of upper urinary tract function was defined as an increase in blood creatinine or hydronephrosis.

Few children could achieve complete continence. Most children could achieve relative continence with medication and CIC. The main difference was in the frequency of catheterization and interval between catheterizations. Herein, we recorded and compared the mean number of CICs per day without micturition to acquire continence in the two groups. The actual number of CICs was smaller because most children urinated several times a day. Generally, fewer CICs indicated a larger bladder capacity.

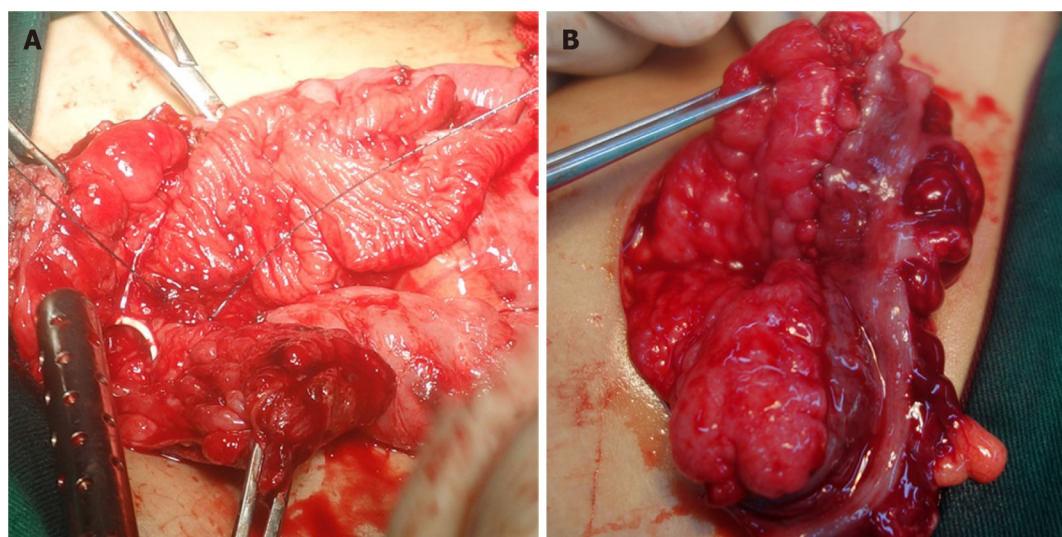
Definition of urodynamic parameters: (1) The bladder capacity was the maximum tolerable capacity or leak point capacity; (2) Expected bladder capacity for age (mL) = (age in years + 1) × 30; (3) Bladder compliance (mL/cm H₂O) = Bladder volume difference/Detrusor pressure difference; and (4) The end-filling detrusor pressure was the maximum tolerable detrusor pressure or detrusor pressure at the leak point.

Failed bladder augmentation was defined as upper urinary tract deterioration, bladder hypertension, low volume, persistent incontinence or a high number of CICs per day, which was unresponsive to medication and CIC. After unresponsive conservative treatment, bladder augmentation can be performed again[6].

Short-term and long-term postoperative complications in the two groups were evaluated.

Statistical analysis

Data analysis was performed using SPSS software. Numerical variables were compared using *t* tests or Mann-Whitney *U* tests. Categorical variables were compared by chi square tests. Statistical significance was considered at *P* < 0.05.



DOI: 10.12998/wjcc.v10.i23.8115 Copyright ©The Author(s) 2022.

Figure 1 Intraoperative photos. A: The whole layer intestinal patch was sutured with the bladder edge in the standard cystoplasty procedure; B: The double-layer intestine seromuscular patch was sutured with the bladder incisional edge in the seromuscular bladder augmentation procedure.

RESULTS

The demographic data, age at surgery, duration of follow-up and concomitant surgery in the two groups are shown in Table 1. The sigmoid colon was used for SC in 3 cases, and the ileum was used in 43 cases. The sigmoid colon was used for SMBA in 12 cases, and the ileum was used in 9 cases.

There was massive mucus urine in the bladder after SC, and continent urinary stoma was recommended for children with SC to facilitate catheterization and irrigation. Therefore, children with continent urinary stoma (19 cases) were mainly in the SC group, and the other 2 cases were in the SMBA group.

The full-thickness intestine was elastic and could significantly expand under a certain pressure, and an obvious diverticulum could be formed after surgery (Figure 2A and B). However, the elasticity of the seromuscular layer used in SMBA was limited, and the bladder did not bulge to form a diverticulum (Figure 2C and D).

The bladder capacity, end-filling pressure and compliance of the two groups before and after surgery are shown in Table 2. The postoperative bladder volume of the two groups was significantly enlarged compared with the preoperative volume (Figure 3), but the postoperative volume of the SMBA group was significantly lower than that of the SC group ($P < 0.05$). The end-filling pressure in the SC group decreased significantly after the operation, and the average pressure decreased to close to 20 cm H₂O, reaching a relatively safe level. The pressure in the SMBA group also decreased but was higher than the safe level, and oral anticholinergic drugs were required. The postoperative urodynamic outcomes of the SMBA group were significantly poorer than those of the SC group (Table 2), indicating the importance of the intestinal mucosa in the outcomes of bladder augmentation.

Postoperative incontinence improved in both groups, but the number of CICs per day and the number of children treated with anticholinergic drugs in the SMBA group were greater than those in the SC group ($P < 0.05$) (Table 3).

Short-term postoperative complications mainly occurred within the 1st month after surgery, including intestinal obstruction, urine leakage, and incision infection (Table 4). Both groups had two cases of incision infection caused by urine leakage. Urine leaked from the incision or drainage tube, and part of the urine accumulated under the incision and caused infection. In the SMBA group, one patient had persistent urine leakage after the operation, which was not relieved by drainage for 10 d, and then SC was performed. The reason for urine leakage in the SC group was mucus urine, resulting in frequent blockage of the drainage tube. The reason for urine leakage in the SMBA group was that the seromuscular layer was very thin, and it was difficult to anastomose the bladder and the seromuscular layer patch tightly.

The incidence of recurrent UTIs and bladder stones in the SC group was not significantly different from that in the SMBA group, but the incidences of residual reflux and reaugmentation were significantly lower than those in the SMBA group ($P < 0.05$) (Table 4). Urinary tract infections were all relieved by antibiotic treatment and indwelling catheterization. Bladder stones were cured by lithotripsy using a holmium laser under a cystoscope. One patient in the SC group had undergone lithotripsy twice. In the SMBA group, 6 (28.6%) patients had reaugmentation for failed augmentation, all of whom used ileum seromuscular patches, and the SC procedure was chosen for the reoperation. The reason for failed augmentation in the SMBA group was patch contracture. As shown in Figure 4, the

Table 1 Demographic characteristics of the patients and concomitant surgery in the 2 groups, *n* (%)

	Total patients	Sex (male/female)	Age at surgery (yr)	Follow-up duration (mo)	Ureteral reimplantation	Continent catheterizable channel
SC	46	21/25	10.6	36	32 (70.0)	19 (41.3)
SMBA	21	8/13	7.6	29.7	18 (85.7)	2 (9.5)

SC: Standard cystoplasty; SMBA: Seromuscular bladder augmentation.

Table 2 Urodynamic parameters of the patients in the 2 groups before and after surgery

	Pre capacity (mL)	Post capacity (mL)	Pre compliance (mL/cm H ₂ O)	Post compliance (mL/cm H ₂ O)	Pre pressure (cm H ₂ O)	Post pressure (cm H ₂ O)
SC	173.9	387.0	4.8	26.7	44.9	20.7
SMBA	151.7	200.4	3.5	6.0	50.2	34.3
<i>P</i> value	0.26	0.000	0.19	0.000	0.28	0.000

Pre: Preoperative; Post: Postoperative; SC: Standard cystoplasty; SMBA: Seromuscular bladder augmentation.

Table 3 Incontinence, number of clean intermittent catheterizations and oral anticholinergic drugs in the 2 groups, *n* (%)

	Pre incontinence	Post incontinence	Number of CICs	Oral anticholinergic drugs
SC	32 (69.6)	3 (6.5)	5.6	8 (17.4)
SMBA	18 (85.7)	7 (33.3)	7.6	17 (81.0)
<i>P</i> value	0.229	0.008	0.000	0.000

Pre: Preoperative; Post: Postoperative; SC: Standard cystoplasty; SMBA: Seromuscular bladder augmentation; CIC: Clean intermittent catheterization.

Table 4 Postoperative complications in the 2 groups, *n* (%)

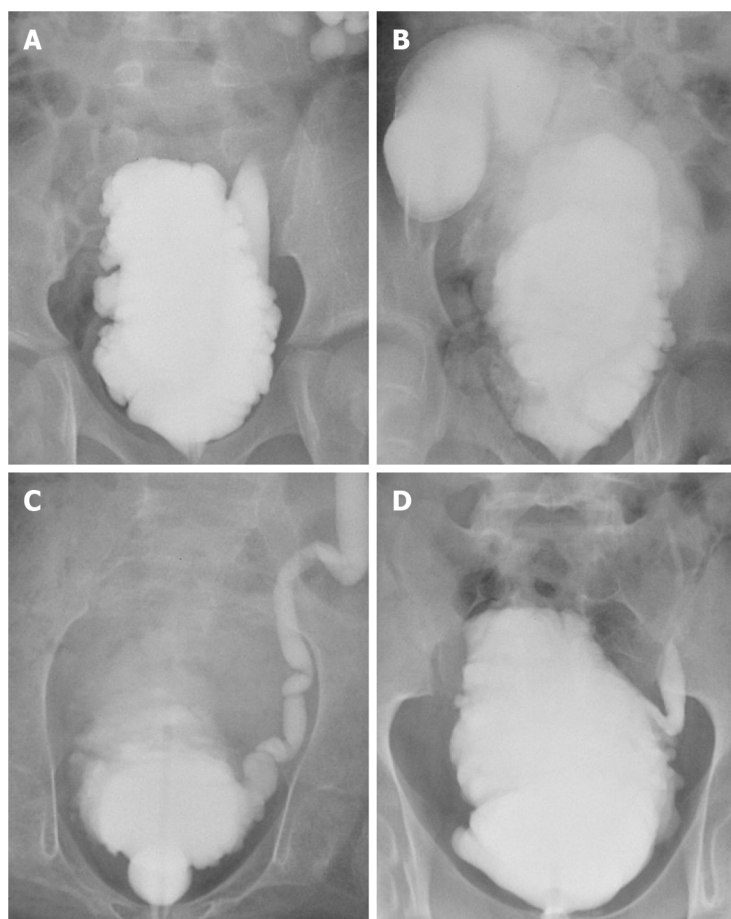
	Intestinal obstruction	Leakage	Incision infection	Recurrent UTIs	Bladder calculi	Residual reflux	Reaugmentation
SC	2 (4.3)	4 (8.7)	6 (13.0)	4 (8.7)	3 (6.5)	1 (2)	0
SMBA	1 (4.8)	5 (23.8)	6 (28.6)	2 (9.5)	1 (4.8)	7 (33.3)	6 (28.6)

SC: Standard cystoplasty; SMBA: Seromuscular bladder augmentation; UTIs: Urinary tract infections.

bladder morphology did not change significantly, and patch contracture and fibrosis were observed during reaugmentation.

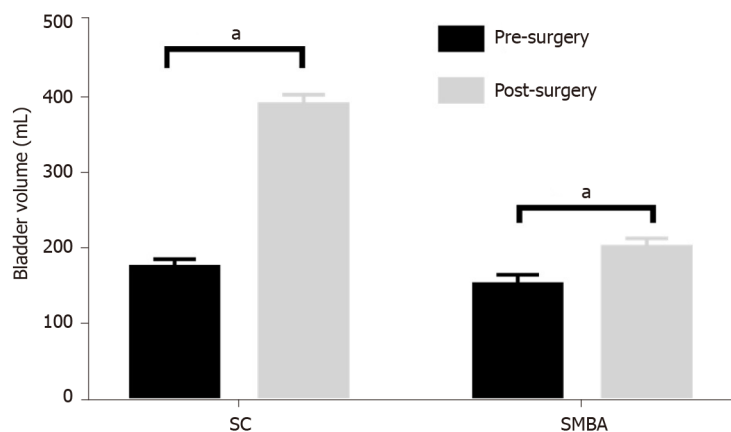
DISCUSSION

Lima *et al* [4,7-9] reported the long-term outcomes of bladder augmentation using ileum or sigmoid seromuscular layer patches in 1998, 2001, 2004, and 2008. During the operation, a mold made of a silicone balloon was placed in the bladder, and both ureters were catheterized. It was believed that avoiding contact between urine and the patch was important for the growth of the epithelium on the patch, and postoperative maintenance of patch expansion and ureteral drainage was critical to avoid patch contracture. The postoperative bladder capacity and compliance were significantly improved, and the complications were lower than those using traditional surgery. Odeh *et al* [10] compared the outcomes of SMBA and SC and thought that SMBA could be used as an effective alternative. No difference was found between the two groups in urinary tract infection, incontinence, secondary operations, or spontaneous perforation. The bladder capacity was significantly increased compared with



DOI: 10.12998/wjcc.v10.i23.8115 Copyright ©The Author(s) 2022.

Figure 2 Cystography before and after augmentation. A-D: the preoperative and postoperative cystography of standard cystoplasty and seromuscular bladder augmentation, respectively.

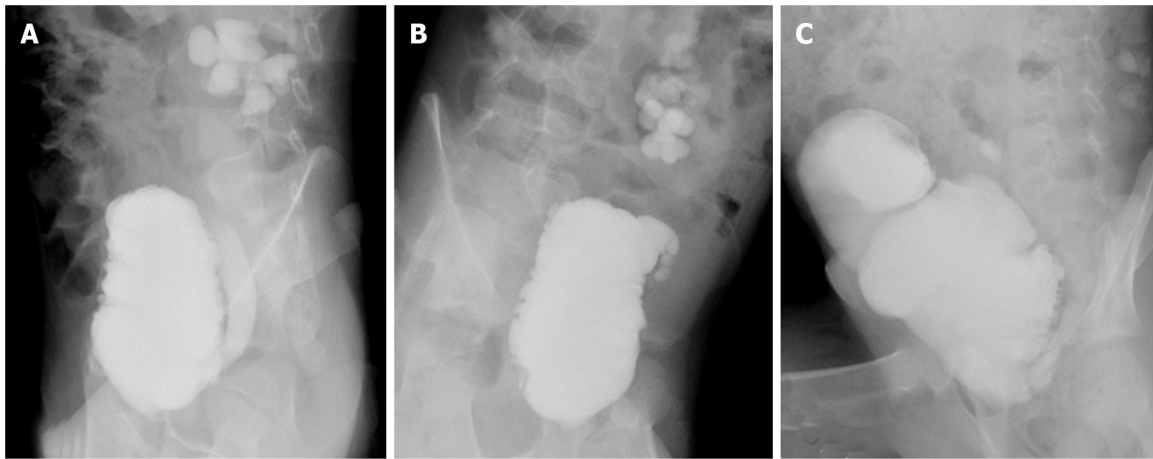


DOI: 10.12998/wjcc.v10.i23.8115 Copyright ©The Author(s) 2022.

Figure 3 The preoperative and postoperative bladder volumes in the two groups were compared. The postoperative bladder volume of the two groups was significantly enlarged compared with the preoperative volume. ^a $P < 0.0001$. SC: Standard cystoplasty; SMBA: Seromuscular bladder augmentation.

the preoperative capacity, and the incidence of bladder stones was lower.

In the present study, the postoperative maximum bladder volume, end-filling pressure and compliance in the SMBA group were improved compared with the preoperative volume, but they were significantly lower than those in the SC group. With regular CIC and anticholinergic drugs, nearly 1/3 of the patients in the SMBA group still experienced incontinence after surgery. A total of 28.6% of patients underwent SC again due to insignificant improvement in postoperative symptoms, and seromuscular patch contracture and fibrosis were observed during reoperation.



DOI: 10.12998/wjcc.v10.i23.8115 Copyright ©The Author(s) 2022.

Figure 4 Reaugmentation in children with failed seromuscular bladder augmentation. A: The neurogenic bladder before surgery; B: Patch contracture after seromuscular bladder augmentation; C: Reaugmentation with standard cystoplasty.

The elasticity of the seromuscular patch was inadequate, and the expansion potential of the patch under pressure was lower than that of the full-layer patch. In the SMBA group, a double-layer patch was used, and the area of the patch was smaller than that of the full-layer patch with the same length of intestine, so the postoperative capacity might be smaller. Additionally, the bladder was not filled with a silicone balloon mold to support the bladder, as reported by Lima *et al*[9] which might be one reason for the poor outcomes.

The theoretical basis of SMBA was that the bladder epithelium could grow to cover the surface of the intestinal seromuscular patch, but the main problem was patch contracture. Studies have shown that the velocity of circulating red blood cells and the perfusion rate after mucosectomy were reduced significantly, which was related to seromuscular patch contracture. Severely compromised microcirculation was believed to be the cause of patch contracture after SMBA, and omentopexy could not prevent contracture[11]. Abdel Hay *et al*[12] found in animal experiments that SMBA with a gastric seromuscular patch could produce a large compliant bladder with few complications, and histopathological examination showed that the patch urothelium grew well. They thought that the gastric blood supply was abundant, producing a blood-rich patch and facilitating the growth of the urothelium. Another animal study showed that a silicone balloon mold placed in the bladder could effectively prevent contracture of the bladder[13].

In all 6 patients with reaugmentation in the SMBA group, ileum seromuscular patches were used. During mucosectomy, the bleeding was stopped by electrocoagulation, which might damage the blood supply of the patch. The ileal seromuscular patch was thinner than the colon patch and was susceptible to urine irritation, which made it easier for the patch to contract. The outcomes of SMBA using colon seromuscular patches were better than those using ileum patches, which might be due to the relatively abundant blood supply and thicker seromuscular layer.

The main short-term complications of the two groups were urine leakage and incision infection. Most cases of incision infection resulted from urine leakage and led to delayed healing of the incision. The incidence of urine leakage and incision infection in the SMBA group was higher than that in the SC group because the seromuscular patch was thinner, and it was difficult to anastomose tightly. The long-term complications were recurrent UTIs, bladder calculi, residual reflux, deterioration of upper urinary tract function, and reaugmentation. The patients in the SMBA group did not have mucus urine, which was the main risk factor for UTIs and bladder stones[14], but there was no significant difference in the incidence of UTIs and bladder stones between the two groups. It was considered to be associated with the small bladder capacity and frequent catheterization in the SMBA group. The outcomes of the SMBA group showed no advantage in terms of complications relative to the SC group.

According to the literature and outcomes of the two groups, we summarized the key points of SMBA as follows: (1) The most important point was to preserve the blood supply of the seromuscular patch. The sigmoid colon patch should be the priority because it is thick and rich in blood supply. Sharp dissection with scissors was required to remove the mucosa during the operation, and blunt tears were avoided. Caution should be taken to stop bleeding with electrocoagulation; (2) For the double-layer seromuscular patch, the length of the intestine isolated should be longer (40 cm is recommended); (3) Placing a silicone balloon mold in the bladder and draining urine in the ureter could be attempted; and (4) Patients and their parents should be informed of the risk of patch contracture.

This study was a retrospective study, and each group had different concomitant operations, which might affect the evaluation of the outcomes. Histopathological research was not performed on the shrunken patch, and collagen deposition was not observed. Surgical procedures and postoperative

management were not completely consistent with those reported in the literature, and it was difficult to determine the cause of failed bladder augmentation. In the future, prospective and controlled studies are needed to support our conclusions.

CONCLUSION

The improvement of the urodynamic parameters in the SMBA group was significantly poorer than that in the SC group. The probability of patch contracture and reaugmentation was higher, likely related to an impaired blood supply and urine irritation, and the sigmoid colon patch should be the priority.

ARTICLE HIGHLIGHTS

Research background

Intestinal bladder augmentation is widely used for neurogenic bladder with good results and is standard cystoplasty (SC). However, due to the mucous secretion and reabsorption function of the intestinal mucosa, many related complications occur. To preclude the contact of urine with gastrointestinal mucosa, alternative methods have been investigated. Seromuscular bladder augmentation (SMBA) could effectively expand the bladder capacity and avoid complications related to integrating the intestinal mucosa into the bladder.

Research motivation

SMBA was not widely accepted and was only reported in a few institutions. Further study is needed to evaluate the safety and effectiveness of SMBA in the treatment of neurogenic bladder.

Research objectives

The aim of our study was to assess the outcomes of patients undergoing SC and SMBA to evaluate the safety and effectiveness of SMBA in the treatment of patients with neurogenic bladder.

Research methods

This study retrospectively analyzed the clinical data of children with SMBA and compared the data with those of children with SC completed during the same period.

Research results

No significant difference was found in the preoperative urinary dynamic parameters between the two groups, but the comparison after operation was statistically significant. The main complications after SMBA were residual ureteral reflux and failed bladder augmentation. All 6 patients with failed augmentation in the SMBA group used ileum seromuscular patches for augmentation, and SC was chosen for reaugmentation. During the reoperation, patch contracture and fibrosis were observed.

Research conclusions

The improvement of the urodynamic parameters in the SMBA group was significantly poorer than that in the SC group. The probability of patch contracture and reaugmentation was higher, likely related to an impaired blood supply and urine irritation, and the sigmoid colon patch should be the priority.

Research perspectives

This study was a retrospective study, and each group had different concomitant operations, which might affect the evaluation of the outcomes. Histopathological research was not performed on the shrunken patch, and collagen deposition was not observed. In the future, prospective and controlled studies are needed to support our conclusions.

FOOTNOTES

Author contributions: Wang RY and Li YX conceived and designed the analysis; Xu JL and Ji LF collected the data; Chen WX supervised the analysis; Sun XG wrote the paper.

Institutional review board statement: This study was reviewed and approved by the Ethics Committee of The Second Hospital, Cheeloo College of Medicine, Shandong University.

Informed consent statement: Informed consent was obtained from the parents or guardian of the patients.

Conflict-of-interest statement: The authors reported no conflict of interest.

Data sharing statement: No additional data are available.

Open-Access: This article is an open-access article that was selected by an in-house editor and fully peer-reviewed by external reviewers. It is distributed in accordance with the Creative Commons Attribution NonCommercial (CC BY-NC 4.0) license, which permits others to distribute, remix, adapt, build upon this work non-commercially, and license their derivative works on different terms, provided the original work is properly cited and the use is non-commercial. See: <https://creativecommons.org/licenses/by-nc/4.0/>

Country/Territory of origin: China

ORCID number: Xiao-Gang Sun 0000-0002-7309-578X; Yan-Xia Li 0000-0001-6303-2738; Long-Fei Ji 0000-0001-6303-2837; Jia-Long Xu 0000-0002-4689-1473; Wei-Xiu Chen 0000-0002-3223-996X; Ruo-Yi Wang 0000-0001-6303-2737.

S-Editor: Wang JL

L-Editor: A

P-Editor: Wang JL

REFERENCES

- Hayashi Y, Yamataka A, Kaneyama K, Kato Y, Lane GJ, Miyano T. Review of 86 patients with myelodysplasia and neurogenic bladder who underwent sigmoidocolocystoplasty and were followed more than 10 years. *J Urol* 2006; **176**: 1806-1809 [PMID: 16945655 DOI: 10.1016/j.juro.2006.03.123]
- Zaragoza Torres RI, Galarza-Flores ME, Gómez-Castellanos JC, Barrera-de León JC. [Urodynamic changes after bladder augmentation surgery in paediatric patients with myelomeningocele due to neurogenic bladder]. *Cir Cir* 2016; **84**: 115-120 [PMID: 26707251 DOI: 10.1016/j.circir.2015.10.008]
- SHOEMAKER WC, MARUCCI HD. The experimental use of seromuscular grafts in bladder reconstruction; preliminary report. *J Urol* 1955; **73**: 314-321 [PMID: 13234121 DOI: 10.1016/s0022-5347(17)67402-0]
- Lima SV, Araújo LA, Montoro M, Maciel A, Vilar FO. The use of demucosalized bowel to augment small contracted bladders. *Br J Urol* 1998; **82**: 436-439 [PMID: 9772885 DOI: 10.1046/j.1464-410x.1998.00816.x]
- Roth JD, Cain MP. Neuropathic Bladder and Augmentation Cystoplasty. *Urol Clin North Am* 2018; **45**: 571-585 [PMID: 30316312 DOI: 10.1016/j.ucl.2018.06.005]
- Shreck E, Gioia K, Lucioni A. Indications for Augmentation Cystoplasty in the Era of OnabotulinumtoxinA. *Curr Urol Rep* 2016; **17**: 27 [PMID: 26902621 DOI: 10.1007/s11934-016-0585-3]
- Lima SV, Araújo LA, Vilar FO. Nonsecretory intestincystoplasty: a 10-year experience. *J Urol* 2004; **171**: 2636-39; discussion 2639 [PMID: 15118439 DOI: 10.1097/01.ju.0000112782.00417.5e]
- Lima SV, Araújo LA, Vilar FO, Mota D, Maciel A. Experience with demucosalized ileum for bladder augmentation. *BJU Int* 2001; **88**: 762-764 [PMID: 11890250 DOI: 10.1046/j.1464-4096.2001.lima.2465.x]
- Lima SV, Araújo LA, Vilar Fde O, Lima RS, Lima RF. Nonsecretory intestincystoplasty: a 15-year prospective study of 183 patients. *J Urol* 2008; **179**: 1113-6; discussion 1116 [PMID: 18206934 DOI: 10.1016/j.juro.2007.10.094]
- Odeh RI, Farhat WA, Penna FJ, Koyle MA, Lee LC, Butt H, Alyami FA. Outcomes of seromuscular bladder augmentation versus standard ileocystoplasty: A single institution experience over 14 years. *J Pediatr Urol* 2017; **13**: 200.e1-200.e5 [PMID: 27576595 DOI: 10.1016/j.jpuro.2016.05.046]
- Cervellione RM, Hajnal D, Varga G, Rakoczy G, Kaszaki J, Keene D, Goyal A, Dickson A, Cserni T. Mucosectomy impairs ileal microcirculation and results in flap contraction after experimental ileocystoplasty. *J Pediatr Urol* 2017; **13**: 81.e1-81.e5 [PMID: 28040322 DOI: 10.1016/j.jpuro.2016.11.007]
- Abdel Hay S, Soliman SM, Debeky ME. Urothelial ingrowth over demucosalized gastrocystoplasty: an experimental study. *BJU Int* 2002; **90**: 945-949 [PMID: 12460361 DOI: 10.1046/j.1464-410x.2002.03032.x]
- Vilar FO, de Araújo LA, Lima SV. Total bladder replacement with de-epithelialized ileum. Experimental study in dogs. *Int Braz J Urol* 2004; **30**: 237-244 [PMID: 15689258 DOI: 10.1590/s1677-55382004000300013]
- Cheng PJ, Myers JB. Augmentation cystoplasty in the patient with neurogenic bladder. *World J Urol* 2020; **38**: 3035-3046 [PMID: 31511969 DOI: 10.1007/s00345-019-02919-z]



Published by **Baishideng Publishing Group Inc**
7041 Koll Center Parkway, Suite 160, Pleasanton, CA 94566, USA

Telephone: +1-925-3991568

E-mail: bpgoffice@wjgnet.com

Help Desk: <https://www.f6publishing.com/helpdesk>

<https://www.wjgnet.com>

