

World Journal of *Hepatology*

World J Hepatol 2022 May 27; 14(5): 866-1052



REVIEW

- 866** Role of hepatitis B virus in development of hepatocellular carcinoma: Focus on covalently closed circular DNA
Bianca C, Sidhartha E, Tiribelli C, El-Khobar KE, Sukowati CHC
- 885** Emerging curative-intent minimally-invasive therapies for hepatocellular carcinoma
Zane KE, Nagib PB, Jalil S, Mumtaz K, Makary MS

MINIREVIEWS

- 896** Saving time and effort: Best practice for adapting existing patient-reported outcome measures in hepatology
Alrubaiy L, Hutchings HA, Hughes SE, Dobbs T
- 911** Loco-regional treatment of hepatocellular carcinoma: Role of contrast-enhanced ultrasonography
Inzerillo A, Meloni MF, Taibbi A, Bartolotta TV
- 923** Benign focal liver lesions: The role of magnetic resonance imaging
Gatti M, Maino C, Tore D, Carisio A, Darvizeh F, Tricarico E, Inchingolo R, Ippolito D, Faletti R
- 944** Pediatric acute viral hepatitis with atypical variants: Clinical dilemmas and natural history
Sarma MS, Ravindranath A

ORIGINAL ARTICLE

Basic Study

- 956** Functions of three ubiquitin-conjugating enzyme 2 genes in hepatocellular carcinoma diagnosis and prognosis
Zhang CY, Yang M

Case Control Study

- 972** Innovations in education: A prospective study of storytelling narratives to enhance hepatitis C virus knowledge among substance users
Talal AH, Ding YX, Markatou M

Retrospective Study

- 984** Impact of utilization of hepatitis C positive organs in liver transplant: Analysis of united network for organ sharing database
Dhaliwal A, Dhindsa B, Ramai D, Sayles H, Chandan S, Rangray R

- 992 Angle of covered self-expandable metallic stents after placement is a risk factor for recurrent biliary obstruction

Tanoue K, Maruyama H, Ishikawa-Kakiya Y, Kinoshita Y, Hayashi K, Yamamura M, Ominami M, Nadatani Y, Fukunaga S, Otani K, Hosomi S, Tanaka F, Kamata N, Nagami Y, Taira K, Watanabe T, Fujiwara Y

Observational Study

- 1006 Dietary phytochemical consumption is inversely associated with liver alkaline phosphatase in Middle Eastern adults

Darabi Z, Webb RJ, Mozaffari-Khosravi H, Mirzaei M, Davies IG, Khayyatadeh SS, Mazidi M

Prospective Study

- 1016 Prospective validation to prevent symptomatic portal vein thrombosis after liver resection

Yoshida N, Yamazaki S, Masamichi M, Okamura Y, Takayama T

SYSTEMATIC REVIEWS

- 1025 Prognostic non-invasive biomarkers for all-cause mortality in non-alcoholic fatty liver disease: A systematic review and meta-analysis

Cianci N, Subhani M, Hill T, Khanna A, Zheng D, Sheth A, Crooks C, Aithal GP

CASE REPORT

- 1038 Biliary obstruction following transjugular intrahepatic portosystemic shunt placement in a patient after liver transplantation: A case report

Macinga P, Gogova D, Raupach J, Jarosova J, Janousek L, Honsova E, Taimr P, Spicak J, Novotny J, Peregrin J, Hucl T

LETTER TO THE EDITOR

- 1047 Reply to "Six-minute walking test performance is associated with survival in cirrhotic patients" to the editor

Malaguti C, Mourão-Junior CA, Chebli JM

- 1050 Role of biliary complications in chronic graft rejection after living donor liver transplantation

Obed A, Bashir A, Jarrad A, Fuzesi L

ABOUT COVER

Editorial Board Member of *World Journal of Hepatology*, Francesco Bellanti, MD, PhD, Doctor, Associate Professor, Department of Medical and Surgical Sciences, University of Foggia, Foggia 71122, Italy. francesco.bellanti@unifg.it

AIMS AND SCOPE

The primary aim of *World Journal of Hepatology* (*WJH*, *World J Hepatol*) is to provide scholars and readers from various fields of hepatology with a platform to publish high-quality basic and clinical research articles and communicate their research findings online.

WJH mainly publishes articles reporting research results and findings obtained in the field of hepatology and covering a wide range of topics including chronic cholestatic liver diseases, cirrhosis and its complications, clinical alcoholic liver disease, drug induced liver disease autoimmune, fatty liver disease, genetic and pediatric liver diseases, hepatocellular carcinoma, hepatic stellate cells and fibrosis, liver immunology, liver regeneration, hepatic surgery, liver transplantation, biliary tract pathophysiology, non-invasive markers of liver fibrosis, viral hepatitis.

INDEXING/ABSTRACTING

The *WJH* is now abstracted and indexed in PubMed, PubMed Central, Emerging Sources Citation Index (Web of Science), Scopus, Reference Citation Analysis, China National Knowledge Infrastructure, China Science and Technology Journal Database, and Superstar Journals Database. The 2021 edition of Journal Citation Reports® cites the 2020 Journal Citation Indicator (JCI) for *WJH* as 0.61. The *WJH*'s CiteScore for 2020 is 5.6 and Scopus CiteScore rank 2020: Hepatology is 24/62.

RESPONSIBLE EDITORS FOR THIS ISSUE

Production Editor: Yi-Xuan Cai, Production Department Director: Xiang Li, Editorial Office Director: Xiang Li.

NAME OF JOURNAL

World Journal of Hepatology

ISSN

ISSN 1948-5182 (online)

LAUNCH DATE

October 31, 2009

FREQUENCY

Monthly

EDITORS-IN-CHIEF

Nikolaos Pyrsopoulos, Ke-Qin Hu, Koo Jeong Kang

EDITORIAL BOARD MEMBERS

<https://www.wjnet.com/1948-5182/editorialboard.htm>

PUBLICATION DATE

May 27, 2022

COPYRIGHT

© 2022 Baishideng Publishing Group Inc

INSTRUCTIONS TO AUTHORS

<https://www.wjnet.com/bpg/gerinfo/204>

GUIDELINES FOR ETHICS DOCUMENTS

<https://www.wjnet.com/bpg/GerInfo/287>

GUIDELINES FOR NON-NATIVE SPEAKERS OF ENGLISH

<https://www.wjnet.com/bpg/gerinfo/240>

PUBLICATION ETHICS

<https://www.wjnet.com/bpg/GerInfo/288>

PUBLICATION MISCONDUCT

<https://www.wjnet.com/bpg/gerinfo/208>

ARTICLE PROCESSING CHARGE

<https://www.wjnet.com/bpg/gerinfo/242>

STEPS FOR SUBMITTING MANUSCRIPTS

<https://www.wjnet.com/bpg/GerInfo/239>

ONLINE SUBMISSION

<https://www.f6publishing.com>

Basic Study

Functions of three ubiquitin-conjugating enzyme 2 genes in hepatocellular carcinoma diagnosis and prognosis

Chun-Ye Zhang, Ming Yang

Specialty type: Gastroenterology and hepatology**Provenance and peer review:** Invited article; Externally peer reviewed.**Peer-review model:** Single blind**Peer-review report's scientific quality classification**Grade A (Excellent): 0
Grade B (Very good): 0
Grade C (Good): C
Grade D (Fair): D
Grade E (Poor): 0**P-Reviewer:** Ke X, China; Ling Q, China**Received:** December 31, 2021**Peer-review started:** December 31, 2021**First decision:** February 21, 2022**Revised:** March 1, 2022**Accepted:** May 7, 2022**Article in press:** May 7, 2022**Published online:** May 27, 2022**Chun-Ye Zhang**, Department of Veterinary Pathobiology, University of Missouri, Columbia, MO 65211, United States**Ming Yang**, Department of Surgery, University of Missouri, Columbia, MO 65211, United States**Corresponding author:** Ming Yang, DVM, PhD, Postdoctoral Fellow, Department of Surgery, University of Missouri, 1030 Hitt Street, NexGen Precision Building, Room 2203, Columbia, MO 65211, United States. yangmin@health.missouri.edu

Abstract

BACKGROUND

Liver cancer ranks the third cause of cancer-related death worldwide. The most common type of liver cancer is hepatocellular carcinoma (HCC). The survival time for HCC patients is very limited by years due to the lack of efficient treatment, failure of early diagnosis, and poor prognosis. Ubiquitination plays an essential role in the biochemical processes of a variety of cellular functions.

AIM

To investigate three ubiquitination-associated genes in HCC.

METHODS

Herein, the expression levels of ubiquitin-conjugating enzymes 2 (UBE2) including UBE2C, UBE2T, and UBE2S in tumor samples of HCC patients and non-tumor controls at the Cancer Genome Atlas (TCGA) database, was comprehensively analyzed. The relationship of UBE2 gene expression level with cancer stage, prognostic outcome, and TP53 mutant status was studied.

RESULTS

Our results showed that UBE2C, UBE2T, and UBE2S genes were overexpressed in HCC samples compared to non-tumor tissues. Dependent on the cancer progression stage, three UBE2 genes showed higher expression in tumor tissues at all four stages compared to non-tumor control samples. Furthermore, a significantly higher expression of these genes was found in stage 2 and stage 3 cancers compared to stage 1 cancer. Additionally, overexpression of those genes was negatively associated with prognostic outcome and overall survival time. Patients with TP53 mutation showed a higher expression level of three UBE2 genes, indicating an association between UBE2 expression with p53 function.

CONCLUSION

In summary, this study shed light on the potential roles of UBE2C, UBE2T, UBE2S on diagnostic and prognostic biomarkers for HCC. Moreover, based on our findings, it is appealing to further explore the correlation of those genes with TP53 mutation in HCC and the related mechanisms.

Key Words: Hepatocellular carcinoma; Ubiquitin-conjugating enzyme 2; UBE2C; UBE2T; UBE2S; TP53 mutant; Biomarker; Diagnostic; Prognostics

©The Author(s) 2022. Published by Baishideng Publishing Group Inc. All rights reserved.

Core Tip: Liver cancer ranks the third cause of cancer-related death worldwide. The most common type of liver cancer is hepatocellular carcinoma (HCC). Lack of effective treatment options and early diagnostic biomarkers results in a short survival time of HCC patients. Ubiquitination plays an essential role in the biochemical processes in cells. In this study, using bioinformatic analysis of the online TCGA database we found that three ubiquitin-conjugating enzyme 2 (UBE2) genes were overexpressed in HCC samples compared to normal samples in a stage-dependent manner, including *UBE2C*, *UBE2T*, and *UBE2S*. Additionally, overexpression of those genes was negatively associated with prognostic outcomes and overall survival times. Patients with TP53 mutation showed a higher level of expression of three *UBE2* genes, indicating an association between UBE2 expression with p53 function. This study shed light on the potential roles of *UBE2C*, *UBE2T*, and *UBE2S* on diagnostic and prognostic biomarkers for HCC, as well as the therapeutic strategy.

Citation: Zhang CY, Yang M. Functions of three ubiquitin-conjugating enzyme 2 genes in hepatocellular carcinoma diagnosis and prognosis. *World J Hepatol* 2022; 14(5): 956-971

URL: <https://www.wjgnet.com/1948-5182/full/v14/i5/956.htm>

DOI: <https://dx.doi.org/10.4254/wjh.v14.i5.956>

INTRODUCTION

Liver hepatocellular carcinoma (HCC, or LIHC) is the most common type of primary liver cancer, which is the third most common cause of cancer-related death worldwide[1,2]. Hepatitis viral infections, abuse of alcohol, liver fibrosis, and cirrhosis are the major factors that cause liver cancer. HCC is closely associated with many metabolic diseases, such as non-alcoholic fatty liver disease (NAFLD), diabetes, obesity, cardiovascular diseases[3]. Surgical operation is a curative treatment for early-stage of liver cancer[4]. However, most HCC cases were found at the late stage due to a lack of effective diagnostic biomarkers, which are not suitable for surgical procedures[5]. Therefore, early diagnostic and exploration of novel treatment options are urgently needed. The mechanism-based investigation both on the genetic and molecular levels is necessary to further facilitate the exploration of diagnosis and treatment.

Ubiquitin is a highly conserved regulatory protein in all eukaryotic organisms, and it is covalently tagged to proteins, serving as a signal for further proteasome degradation[6]. Ubiquitination is an essential biochemical process, which contributes to a variety of cellular functions, such as cell signaling pathway regulation, cell death, protein degradation, innate and adaptive immune response. Due to the significant role of ubiquitination in cell survival and death, it is closely associated with host health and disease[7,8]. When exploring the top overexpressed genes of E2 ubiquitin-conjugating enzymes (UBE2) in HCC patient tumor samples from the Cancer Genome Atlas (TCGA) database, UBE2C, UBE2T, and UBE2S were ranked as top 4, top 8, and top 31, respectively. Those highly expressed genes draw our attention in exploring their roles in cancers, specifically for HCC. Therefore, in this study, we focused on the investigation of highly expressed UBE2C, UBE2T, UBE2S as potential biomarkers for HCC diagnosis and prognosis, as well as their expression levels at different cancer stages.

UBE2 is a large enzyme family that plays a fundamental role in the second step of ubiquitination that connects the first step of ubiquitin activation by UBE1 enzyme and together with the third step ubiquitin-protein ligation *via* UBE3 enzyme to conduct the complex ubiquitination process[7]. UBE2C protein, encoded by gene *UBE2C*, was reported to exacerbate cell apoptosis[9] and contribute to chromosome mis-segregation during the formation of tumors[10]. Overexpression of gene *UBE2C* has been found in tumor cells of HCC patients compared to noncancerous liver cells in 62 out of the studied 65 clinical cases[11]. Most recently, another study also showed that UBE2C can promote cancer cell growth and migration[12].

UBE2T can bind to Fanconi anemia complementation group L and mediate the monoubiquitination of Fanconi anemia complementation group D2 (FANCD2), a critical process of regulation associated with damaged-DNA repair in the Fanconi anemia pathway[13,14]. It was also reported that UBE2T played an important role in the carcinogenesis in different cancer types[15-18], such as human breast cancer cells[17,18], lung cancer[19], gastric cancer[20], *etc.*

UBE2S serves as the key component on the degradation of anaphase-promoting complex/cyclosome substrate *via* mitosis, in which process UBE2C is also involved[21]. In breast cancer cells, UBE2S deficiency can suppress their migration, invasion, and growth *via* disruption of actin cytoskeleton and focal adhesion[22]. In addition, silencing UBE2S reduced cell proliferation and colony formation of lung cancer cells, resulting in cell apoptosis[23]. In HCC, UBE2S was upregulated and showed oncogenic activity by increasing p53 ubiquitination[24]. Overall, these three genes play pivotal roles in cancer cell progression and invasion, indicating the potential as biomarkers for HCC.

However, the bioinformatic-based systematic analysis of UBE2C, UBE2T, and UBE2S in liver cancers from clinical patients have not been reported. Herein, this study carried a comprehensive bioinformatic-based analysis of clinical data from the online database to illustrate the significant roles of three *UBE2* genes in HCC, by analyzing their gene expression levels between non-tumor and tumor tissues, their association with cancer progression stage, and their prognostic values, and by investigating their expression in different cell types, association with TP53 mutation status, co-expression efficiency, involved signaling pathways, and associated proteins in interaction networks.

MATERIALS AND METHODS

Ethics statement

All the data for this study originated and was generated from the online open resource database and published literature.

TCGA database

The RNA-seq data and LIHC/HCC patient clinic information were originated and generated from TCGA. (TCGA research network: <https://www.cancer.gov/tcga>). The genomic alterations for UBE2C, UBE2T, UBE2S in different liver cancer types were analyzed using cBioPortal (<https://www.cbioportal.org/>)[25,26]. A survival heatmap was generated using GEPIA[27].

UALCAN

The expression level of the genes of interest on pan-cancer was analyzed using UALCAN web-based tool. The required gene expression level in pan-cancer was analyzed using Student's *t*-test to compare the normal and tumor group with $P < 0.05$ as significant differential expression. Heatmap was generated to display the RNA-seq data using the median value of expression Log2 (TPM+1). Analysis of gene expression level on HCC cancer progression stages, expression level on TP53 mutant status and non-TP53 mutant status was performed using online resources UALCAN[28].

Human Protein Atlas Database

The analysis of RNA expression in different cell types and the expression location of *UBE2* genes in three different cells including epidermoid carcinoma cell line A-431, human osteosarcoma cell line U-2 OS, and human glioblastoma cell line U-251 MG were explored using the Human Protein Atlas database (Human Protein Atlas, <https://www.proteinatlas.org>, Protein Atlas version 21.0), an online public resource for the investigation of protein-coding genes of variable cancers in cell and tissue samples[29].

STRING database for PPI network

In this study, the STRING online tool[30] was used to show the interaction of functional enrichment of the generated network with queried input: UBE2C, UBE2T, UBE2S, and TP53. (Default threshold for interaction specificity score > 0.4 was defined as significant). The functional property was generated and summarized based on the online information and literature.

Statistical analysis

The survival curve was generated using Kaplan Meier-plotter that was commonly used for assessment of the gene expression on survival from a large database such as TCGA samples. The significance of survival impact was measured by a log-rank test. A log-rank $P < 0.05$ was set for statistically significant cut-off.

Expression of genes in tumor samples and normal samples using Student's *t*-test (considering unequal variance) for comparison between different groups. A P value less than 0.05 is considered statistically significant.

Overall survival heat map of the patients across multiple cancer types was generated with the input of 95% confidence interval and the calculation of the hazard ratio based on the Cox PH model. Pearson's

correlation coefficient (r) was used to plot the co-expression between queried input paired genes.

RESULTS

Expression levels of UBE2C, UBE2T, and UBE2S in pan-cancers

As shown in **Figure 1**, three UBE2 family members including UBE2C, UBE2T, and UBE2S were highly expressed in most tumor samples compared to the corresponding normal (non-tumor) samples. A formula of $\log_2(\text{TPM}+1)$ was used to calculate the UBE2 gene expression level, where TPM is transcripts per million. The case numbers for each cancer were included in the figure. The expression level among normal and tumor tissues are heterogeneous, with relatively high expression in both normal and tumors, such as colon and rectum adenocarcinoma (COAD and READ), skin cutaneous melanoma (SKCM), and thymoma (THYM). For HCC (or LIHC), UBE2C showed a high expression level in tumor samples ($n = 371$) compared with normal samples ($n = 50$), with the mean value of the $\log_2(\text{TPM} + 1)$ of 4.2 for tumor samples and 0.7 for normal samples. UBE2T also showed an increased expression level in tumor samples with the mean value of $\log_2(\text{TPM} + 1)$, compared to 0.6 for normal samples. Similarly, a higher expression level was shown for UBE2S, with the value of the $\log_2(\text{TPM} + 1)$ of 4 for tumor samples and the value of $\log_2(\text{TPM} + 1)$ of 2 for normal samples.

Expression level in liver cancer and normal samples

Similarly, the distribution of the expression UBE2C, UBE2T, and UBE2S indicated that they were expressed in HCC tumor samples compared to normal samples (**Figure 2A-C**), indicating the potential as a diagnostic biomarker for HCC. Furthermore, the expression of each gene at different tumor stages was analyzed to investigate the association of gene expression with the tumor progression stage. The results demonstrated that along with the progression of cancer, the expression patterns of genes UBE2C, UBE2T, and UBE2S kept increasing from stage 1 to stage 3 (**Figure 2D-F**). There was a peak level at stage 3, while at stage 4, the expression level significantly decreased for UBE2C and UBE2S compared to that from stage 2 and stage 3, even though it was increased compared to that in normal tissue (**Figure 2D and F**). In addition, the expression of UBE2T was also decreased at stage 4 of HCC, but without significant change compared to that in stages 2 and 3, which might be impacted by the sample size (**Figure 2E**). Even though, the significantly increased expression level of those genes in HCC stage 1, 2, and 3 when compared to normal samples or compared between stage 1 and stage 2&3, which suggests that it is valuable for further exploring them as potential biomarkers or key genes mediating HCC progression.

Relationship between UBE2 expression and the survival of HCC patients

To explore the prognostic value of these gene expression levels in HCC patients, the survival outcome of patients, the expression of UBE2 genes, and the survival curve were analyzed. Remarkably, high expression levels of UBE2C, UBE2T, and UBE2S were associated with a negative prognostic outcome in HCC patients. The patients with overexpression of UBE2C ($n = 91$) showed significantly less survival time compared to the patients with low or medium expression levels ($n = 274$) (**Figure 3A**, $P < 0.0001$). For UBE2T, 277 patients with low or medium expression levels showed significantly higher survival days compared to the patients ($n = 88$) with high expression levels (**Figure 3B**, $P < 0.0001$). Similar results were also found for UBE2S, a significantly shortened survival time was associated with the higher UBE2S expression level ($n = 89$) compared with longer survival patients with low or medium expression levels of UBE2S ($n = 276$) (**Figure 3C**, $P < 0.0001$).

In addition, with the analysis of prognostic markers for pan-cancers, the results indicated that a higher expression level of UBE2C, UBE2T, and UBE2S was associated with the poor prognostic outcome for most of the cancers, such as adrenocortical carcinoma (ACC), kidney chromophobe (KICH), brain lower grade glioma (LGG) (**Figure 3D**).

Genetic mutations in UBE2 genes in HCC

We further explored the underlying mechanisms of three UBE2 genes in HCC development and progression. A total of 1238 samples were analyzed using the cBioPortal from the TCGA pan-cancer database for genetic alterations including mutations, structural variants, and copy number alteration of three UBE2 genes. The OncoPrint results analyzed from cBioPortal showed the queried genes genomic alteration frequency from TCGA studied HCC samples is 2.1% (26 out of 1238). Among them, the genetic alteration occurred on genes UBE2T and UBE2S, and no alteration was found for UBE2C (**Figure 4A**). Then, the genetic alteration based on liver cancer subtypes was further analyzed. Among 1238 samples, 369 samples were HCC and 712 samples were hepatobiliary cancer. The genetic alteration was mostly found in HCC and hepatobiliary cancer. For HCC, the overall genetic alteration frequency of genes UBE2T and UBE2S was 6.23% (23 out of 369 samples) that largely resulted from amplification (5.96%, 22 cases, red color) and less from mutation (0.27%, 1 case, green color) out of 369 cases. For hepatobiliary cancer, the overall genetic alteration frequency of genes UBE2T and UBE2S was 0.28% in total 712 cases with 1 case amplification (0.14%) and 1 case mutation (0.14%) (**Figure 4B**). Specifically, for

	UBE2C		UBE2T		UBE2S		Sample number (n)	
	N	C	N	C	N	C	N	C
BLCA	3.1	7.5	3.1	5.4	4.4	6.1	19	408
BRCA	2.3	6.2	2.5	5.4	2.9	4.9	114	1097
CESC	1.5	7.6	2.1	6.1	3.6	6.3	3	305
CHOL	0.4	4.9	0.5	4.2	2.0	4.4	9	36
COAD	5.5	7.5	4.1	5.7	4.0	5.8	41	286
ESCA	2.7	7.2	2.1	5.6	3.1	5.8	11	184
GBM	0.5	6.5	4.2	5.4	5.0	5.6	5	156
HNSC	4.9	6.9	3.6	5.1	3.6	5.3	44	520
KICH	0.9	3.0	2.1	2.0	3.7	4.2	25	67
KIRC	1.0	3.1	2.0	2.6	2.9	3.2	72	533
KIRP	0.7	2.5	1.8	2.9	3.2	3.5	32	290
LIHC	0.7	4.2	0.6	3.6	2.0	4.0	50	371
LUAD	2.2	6.0	1.9	5.1	3.2	4.6	59	515
LUSC	2.3	7.1	2.1	5.8	3.4	6.1	52	503
PAAD	3.8	5.3	2.9	4.1	3.7	4.6	4	178
PRAD	1.4	2.9	2.3	2.8	3.7	4.3	52	497
PCPG	1.1	2.6	2.3	4.2	4.3	5.4	3	179
READ	5.6	7.6	4.6	5.6	4.4	6.1	10	166
SARC	2.7	6.8	3.0	5.4	3.0	5.3	2	260
SKCM	6.4	6.6	5.3	5.3	5.5	6.0	1	472
THCA	1.1	2.4	2.2	2.8	3.7	3.5	59	505
THYM	6.9	7.2	5.4	5.7	5.9	6.1	2	120
STAD	4.8	7.2	3.2	5.6	3.7	5.4	34	415
UCEC	2.0	7.0	2.2	5.4	4.0	6.1	35	546

DOI: 10.4257/wjh.v14.i5.956 Copyright ©The Author(s) 2022.

Figure 1 Gene expression levels of UBE2C, UBE2T, and UBE2S in pan-cancer with normal samples and tumor samples (the Cancer Genome Atlas database). N: Normal samples; C: Cancer samples. Color-coded only based on each cancer type. Red: higher expression level; Blue: lower expression level when compared tumor samples with normal samples in a particular cancer type. The number represents the median value of expression Log2 (transcript count per million (TPM)+1). The total sample number for the corresponding cancer type was listed on the right side of the figure (N: total sample number of normal samples. C: total sample number of tumor samples) Abbreviations: BLCA: Bladder urothelial carcinoma; BRCA: Breast invasive carcinoma; CESC: Cervical squamous cell carcinoma; CHOL: Cholangiocarcinoma; COAD: Colon adenocarcinoma; ESCA: Esophageal carcinoma; GBM: Glioblastoma multiforme; HNSC: Head and Neck squamous cell carcinoma; KICH: Kidney Choromophobe; KIRC: Kidney renal clear cell carcinoma; KIRP: Kidney renal papillary cell carcinoma; LIHC (HCC): Liver hepatocellular carcinoma; LUAD: Lung adenocarcinoma; LUSC: Lung squamous cell carcinoma; PAAD: Pancreatic adenocarcinoma; PRAD: Prostate adenocarcinoma; PCPG: Pheochromocytoma and Paraganglioma; READ: Rectum adenocarcinoma; SARC: Sarcoma; SKCM: Skin Cutaneous Melanoma; THCA: Thyroid carcinoma; UCS: Uterine Carcinosarcoma; THYM: Thymoma; STAD: Somach adenocarcinoma; UCEC: Uterine Corpus Endometrial Carcinoma)

gene *UBE2T*, the only genetic alteration type is amplification which was found in 21 out of 369 cases of HCC samples, while no mutation had occurred for *UBE2T* (Figure 4C). For *UBE2S*, genetic alteration occurred in 2 cases out of 369 cases (0.54%) in HCC, including 1 case of mutation (0.27%) and 1 case of amplification (0.27%). Similarly, genetic alteration of *UBE2S* occurred in 2 cases out of 712 cases (0.28%) in hepatobiliary cancer, including 1 case mutation (0.14%) and 1 case amplification (0.14%) (Figure 4D). Overall, the most of genetic alteration occurred in HCC samples with 23 out of 369 samples (6.23%), which was mainly from gene *UBE2T*.

RNA and protein expression patterns

Single-cell RNA sequencing (scRNA-seq) revealed three clusters c-6 (B-cells), c-15 (T-cells), and c-16 (Erythroid cells) exhibited high mRNA expression of all three *UBE2C*, *UBE2T*, and *UBE2S* (Figure 5A-

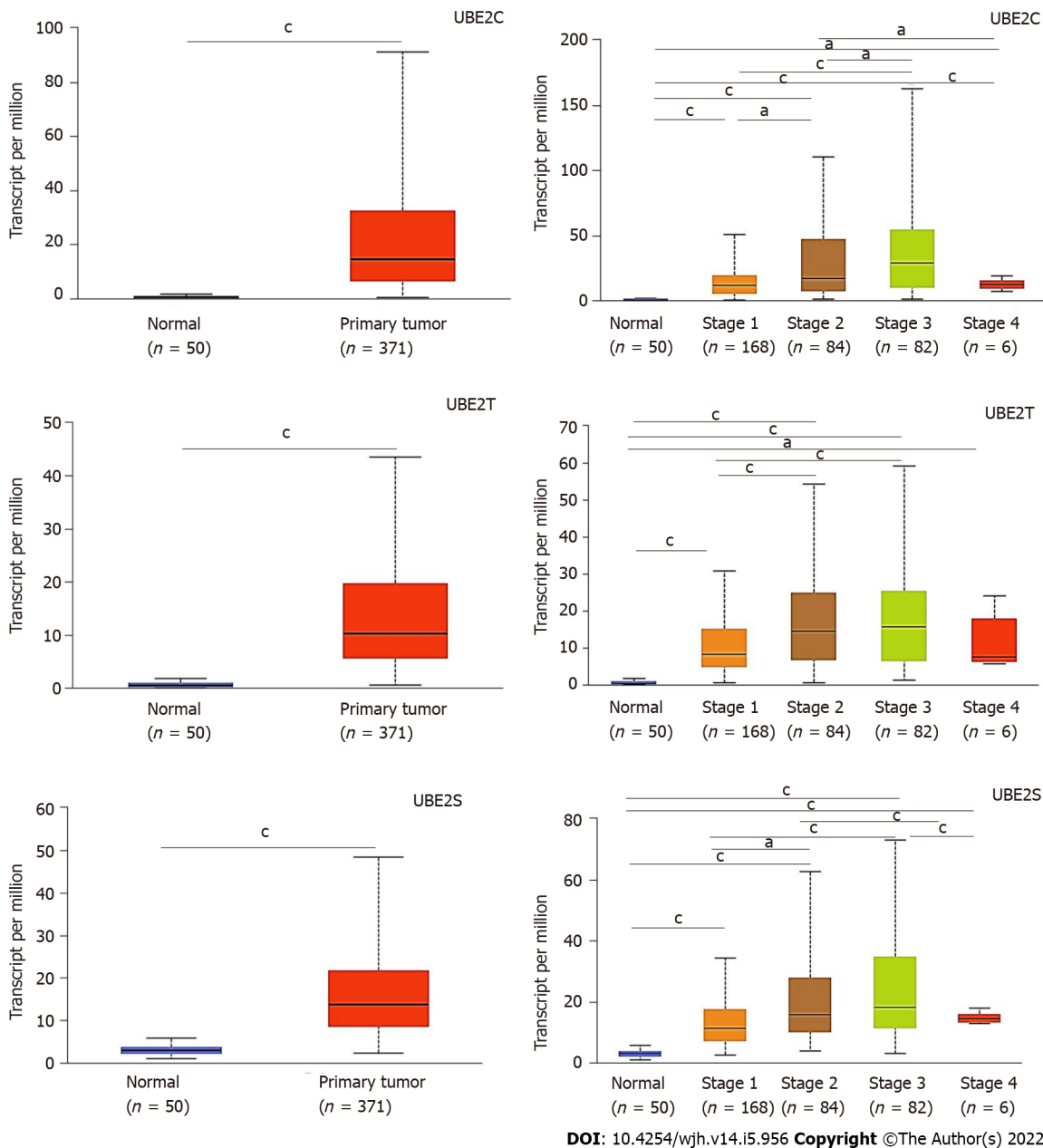


Figure 2 UBE2C, UBE2T, and UBE2S expression levels in hepatocellular carcinoma based on normal and tumor sample types and based on cancer stages (the Cancer Genome Atlas database). A: Expression of UBE2C in hepatocellular carcinoma (HCC) based on sample types; B: Expression of UBE2T in HCC based on sample types; C: Expression of UBE2S in HCC based on sample types; D: Expression of UBE2C in HCC based on individual cancer stages; E: Expression of UBE2T in HCC based on individual cancer stages; F: Expression of UBE2S in HCC based on individual cancer stages ($^aP < 0.05$; $^bP < 0.001$).

G). In addition, the protein expression location in three cell lines including A-431, U-2 OS, and U-251 MG (Human Protein Atlas, <https://www.proteinatlas.org>) indicated that UBE2C was mainly expressed in the cytosol and plasma membrane, UBE2T was mainly expressed in nucleoli or nucleoplasm, and UBE2S was highly expressed in the cytosol and plasma membrane and less expressed in nucleoli (Figure 6). Furthermore, the co-expression relationship of these genes was analyzed, since all three genes *UBE2C*, *UBE2T*, and *UBE2S* were expressed by the same clusters in HCC. The correlation expression of pair-wise genes was analyzed using Pearson methods (Figure 7A, 7B, 7C). Results showed there was a co-expression between two paired genes ($r = 0.83$ UBE2C-UBE2S; $r = 0.76$ UBE2C-UBE2T; $r = 0.76$ UBE2S-UBE2T). In addition, the analysis of co-expression of their proteins also showed that there was a correlation among three proteins (Figure 7D), indicating a co-expressing pattern.

TP53 mutation impacts the expression of UBE2S, UBE2T, and UBE2S genes

Notably, the expression levels of all three genes *UBE2C*, *UBE2T*, and *UBE2S* were significantly higher in *TP53* mutant samples compared with both normal samples and non-*TP53* mutant samples (Figure 7E-7G). However, the correlation or causation between the higher expression level of *UBE2C*, *UBE2T*,

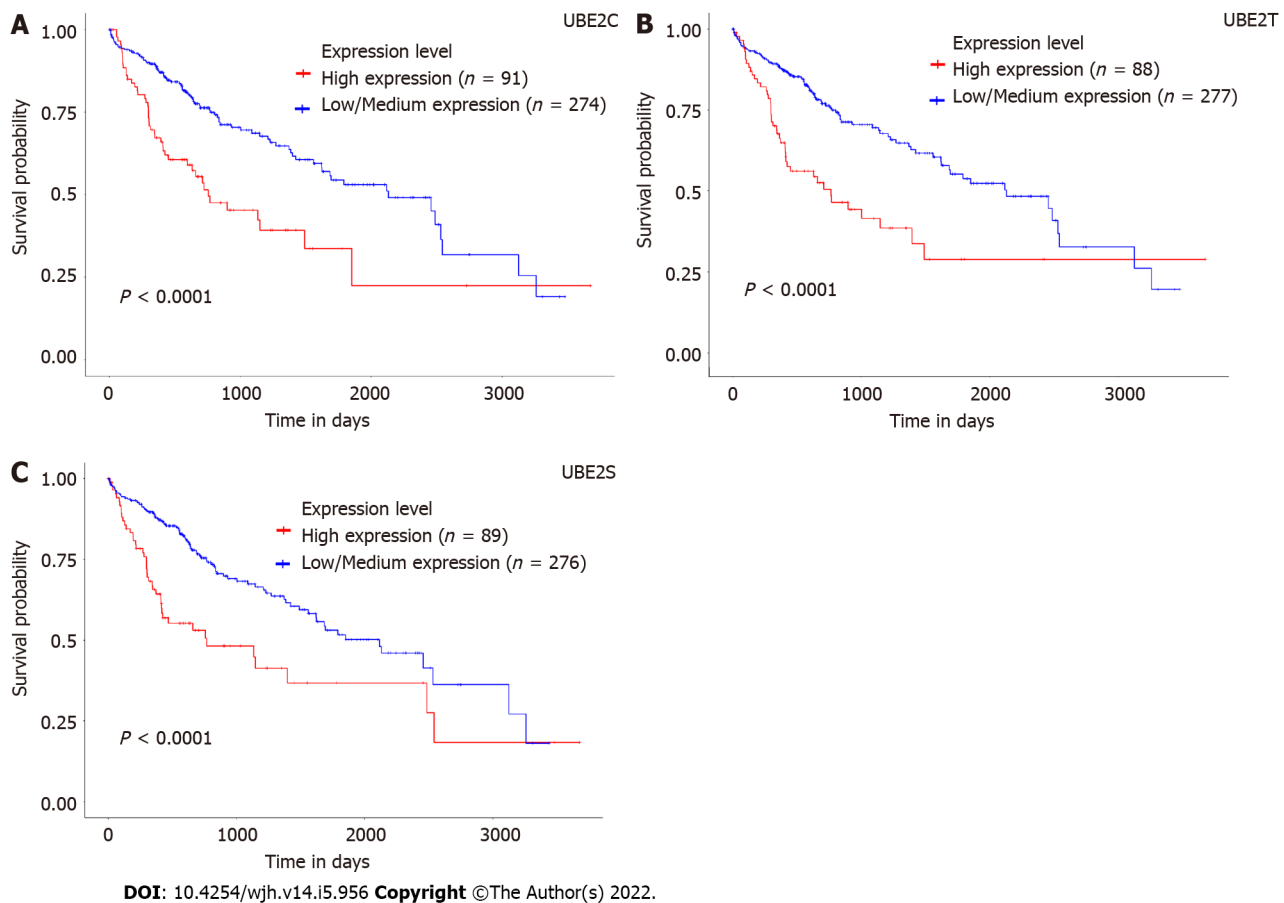


Figure 3 Association of expression levels of UBE2C, UBE2T, and UBE2S with prognostic outcomes of hepatocellular carcinoma patients.

A: Survival of patients with a high expression level of UBE2C compared with patients with low/medium expression level; B: Survival of patients with a high expression level of UBE2T compared with patients with a low/medium expression level; C: Survival of patients with a high expression level of UBE2S compared with patients with low/medium expression level; D: Overall survival heat map of patients across multiple cancer types. Red color represents higher risk on survival and blue color represents lower risk. The frame indicated the significant unfavorable (red) and favorable (blue) prognostic outcome. (Calculation of the hazards ratio based on Cox PH Model, 95% Confidence Interval) (ACC: Adrenocortical carcinoma; LGG: Brain lower grade glioma; DLBC: Lymphoid Neoplasm Diffuse Large B-cell Lymphoma; MESO: Mesothelioma; OV: Ovarian serous cystadenocarcinoma; TGCT: Testicular germ cell tumors; UVM: Uveal melanoma).

UBE2S, and *TP53* mutation is unknown. This finding of a comprehensive analysis of clinical patient samples was supported by several studies. For example, overexpression of *UBE2C* in patients with endometrial cancer was associated with cancer progression and recurrence, by increasing endometrial cancer cell proliferation, migration, invasion, as well as the process of epithelial-mesenchymal transition through inhibition of p53 expression[31]. *UBE2T* can enhance the ubiquitination of p53 in HCC cells[32, 33]. Similarly, *UBE2S* also can promote the ubiquitination of p53 and mediate its protein degradation in HCC cells[24]. Therefore, recovering or enhancing p53 function can partially attenuate UBE2 genes-induced malignant phenotypes of tumor cells.

Protein-protein interaction network

To further investigate the association among three genes *UBE2S*, *UBE2T*, *UBE2S*, and *TP53* function, we generated the protein-protein interaction network using their proteins and *TP53*. The most closely associated proteins related to these protein interactions were analyzed using STRING, shown in Figure 7H. The functional annotation and associated signaling pathways of the queried genes were summarized in Table 1.

DISCUSSION

The early diagnostic of HCC or LIHC is critically important for cancer treatment and selection of therapeutic methods[34-36]. In addition, a better understanding of the development and progression of the cancer stage is helpful to choose the therapy that can result in a good outcome. In this study, with clinical data analysis, we found that the expression of *UBE2C*, *UBE2T*, and *UBE2S* was increased in tumor tissue compared to normal tissue, and their expression was associated with the procession of

Table 1 Functional enrichment in the queried network (query input UBE2C, UBE2T, UBE2S, TP53)

UBE2 genes			Biological process
UBE2C	UBE2T	UBE2S	Protein K27-linked ubiquitination
	UBE2T	UBE2S	Protein K29-linked ubiquitination
		UBE2S	Free ubiquitin chain polymerization
	UBE2T	UBE2S	Protein K6-linked ubiquitination
		UBE2S	Exit from mitosis
		UBE2S	Positive regulation of ubiquitin protein ligase activity
	UBE2T	UBE2S	Protein K11-linked ubiquitination
	UBE2T		Protein K48-linked ubiquitination
	UBE2T	UBE2S	Protein K63-linked ubiquitination
UBE2C		UBE2S	Anaphase-promoting complex-dependent catabolic proceed
UBE2			Cellular component and uniport annotated keywords
UBE2C		UBE2S	Anaphase-promoting complex
UBE2C	UBE2T	UBE2S	Nucleoplasm
UBE2C	UBE2T	UBE2S	ATP-binding
UBE2C		UBE2S	Cell cycle
UBE2C	UBE2T	UBE2S	Transferase
UBE2C	UBE2T	UBE2S	Ubl conjugation
UBE2			Reactome pathways
UBE2C		UBE2S	Aberrant regulation of mitotic exit in cancer due to RB1 defects
UBE2C		UBE2S	APC-Cdc20 mediated degradation of Nek2A
UBE2C		UBE2S	APC/C:Cdc20 mediated degradation of Cyclin B
UBE2C		UBE2S	APC/C: Cdh1 mediated degradation of Cdc20 and other APC/C
UBE2C		UBE2S	Cell cycle checkpoints
UBE2C		UBE2S	Cell cycle, mitotic
UBE2C		UBE2S	Cellular responses to stress
UBE2C		UBE2S	Cellular Senescence
UBE2C		UBE2S	Conversion from APC/C: Cdc20 to APC/C: Cdh1 in late anaphase
UBE2C		UBE2S	Generic transcription pathway
UBE2C		UBE2S	Inactivation of APC/C <i>via</i> direct inhibition of the APC/C compel
UBE2C		UBE2S	Phosphorylation of the APC/C
UBE2C	UBE2T	UBE2S	Post-translational protein modification
UBE2C	UBE2T	UBE2S	Synthesis of active ubiquitin: roles of E1 and E2 enzymes
UBE2C		UBE2S	Synthesis of DNA
UBE2C		UBE2S	Transcriptional regulation by VENTX

UBE2: Ubiquitin-conjugating enzyme 2; APC/C: Anaphase-promoting complex/cyclosome; VENTX: Ventral-expressed homeobox (VENT)-like homeobox protein 2.

cancer stage from stage 1 to stage 3, although there was a decrease at last stage (stage 4). These results suggest there is a potential to use those genes as biomarkers to assist the diagnosis of HCC at the early-stage point. What's more, the results also showed that there was a significantly increased expression level of those genes at stage 2 and stage 3 compared with stage 1 during HCC progression. This may shed light on the potential usage of those genes as biomarkers to better predict the cancer progression stage.

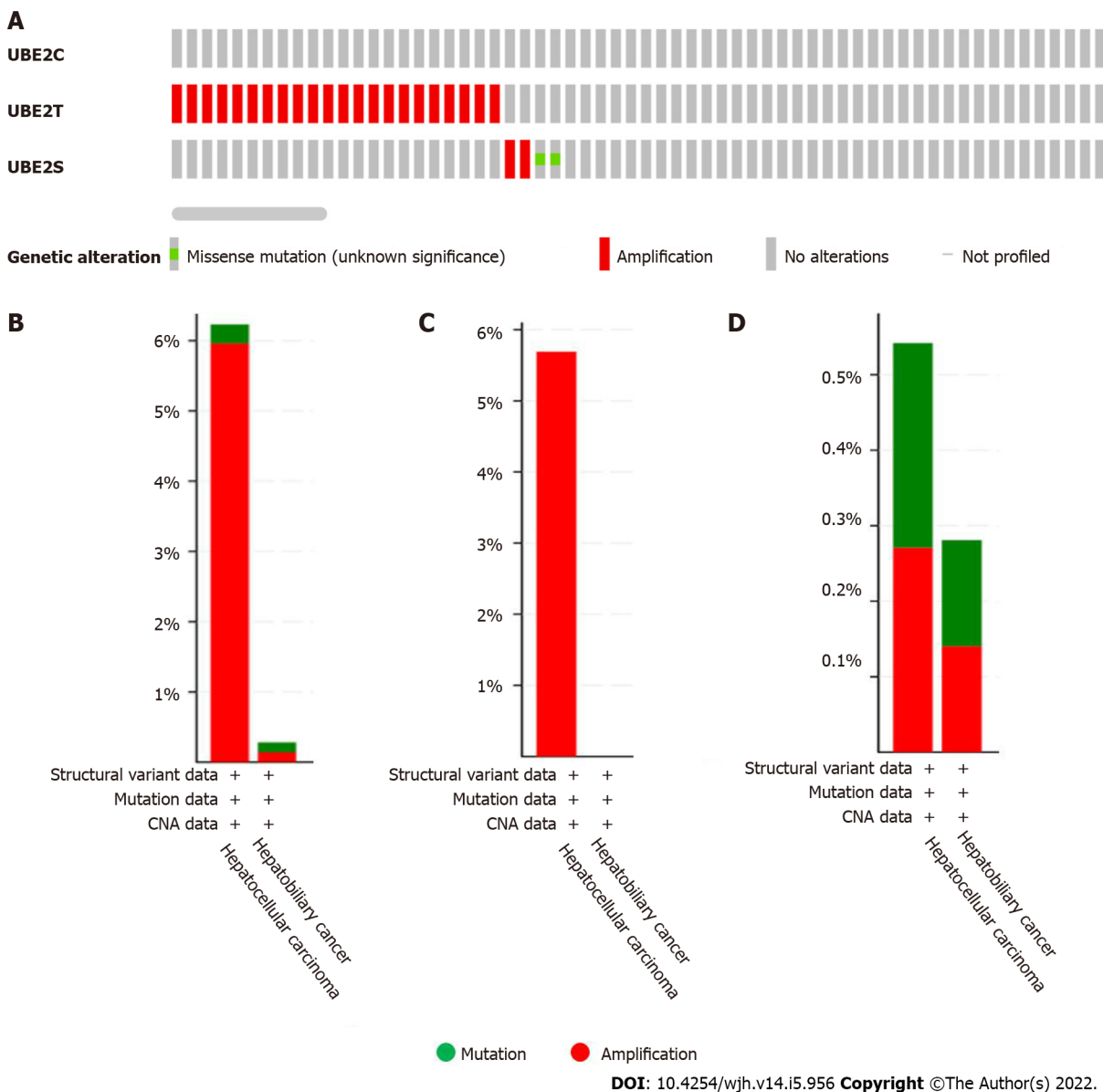
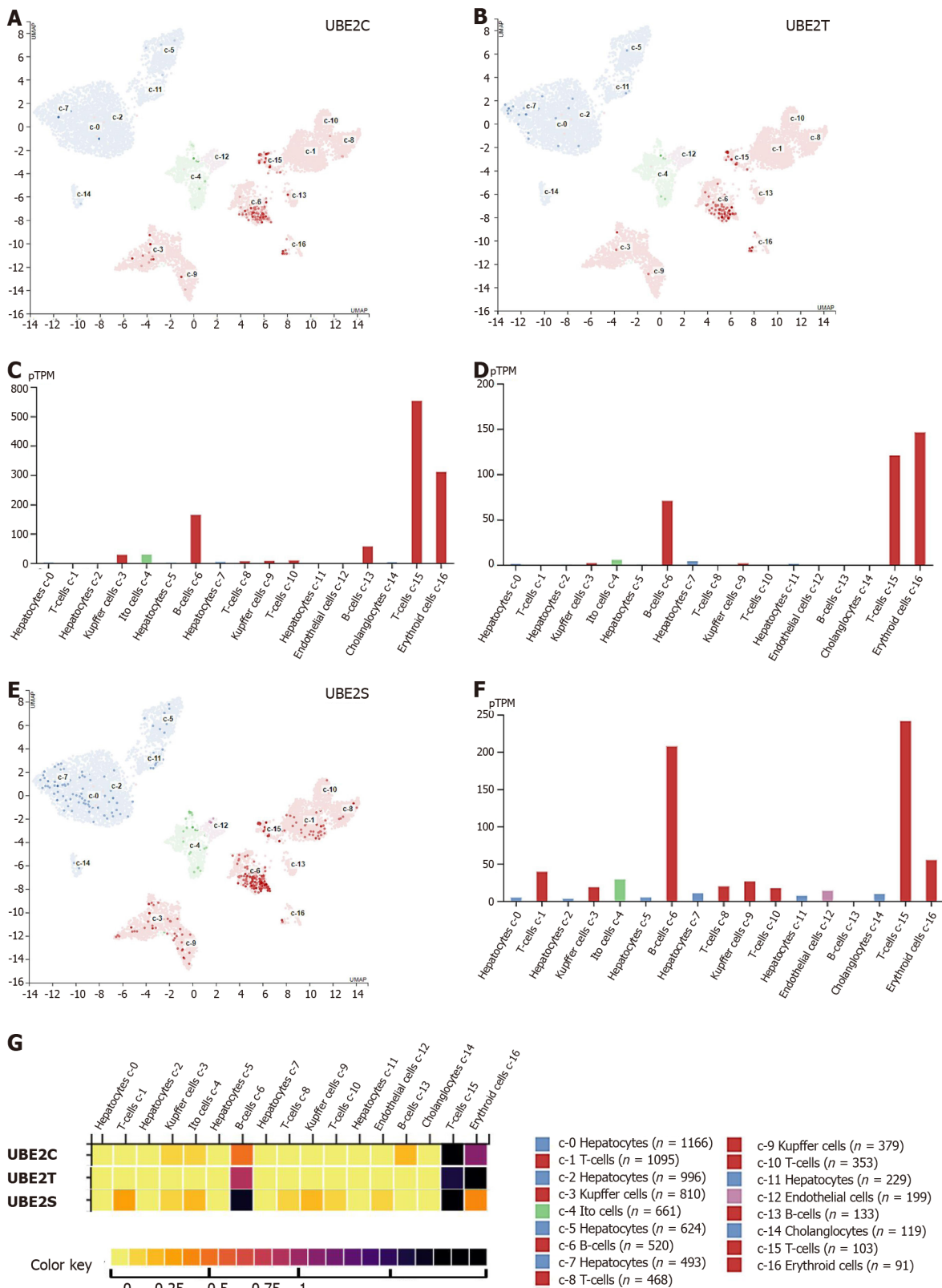


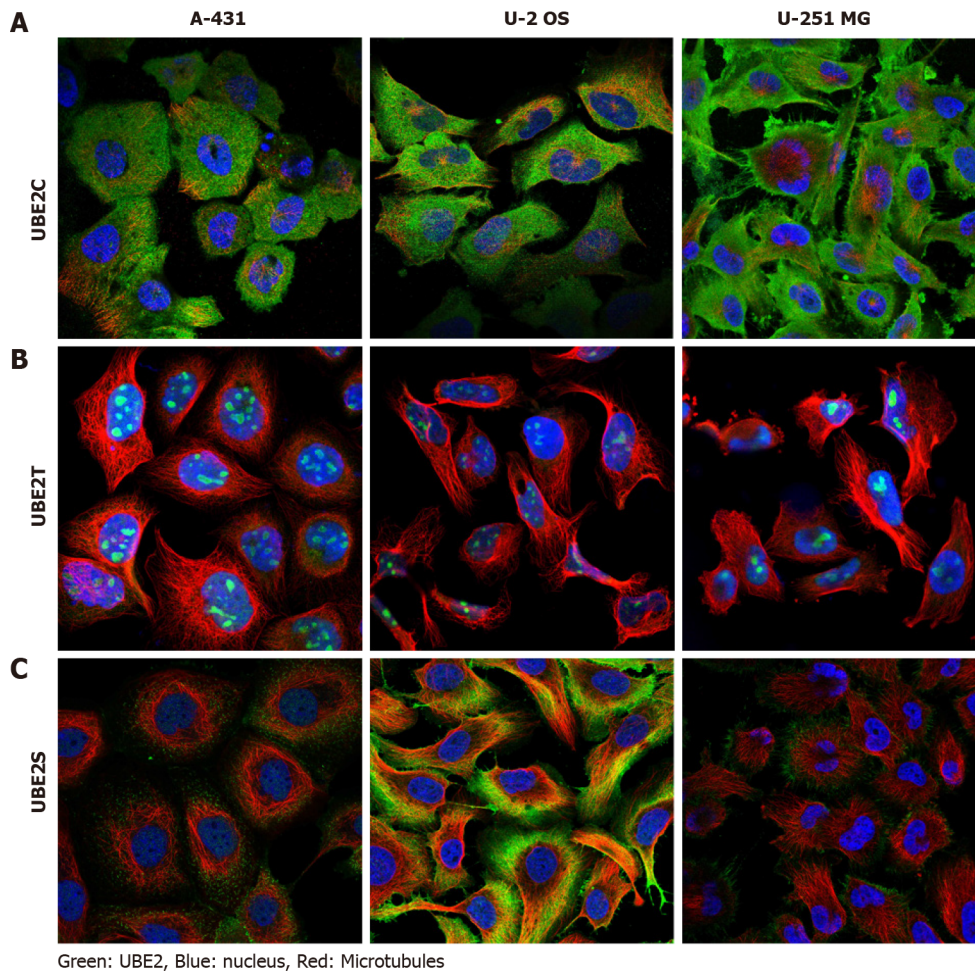
Figure 4 The genetic alteration occurred in UBE2C, UBE2T, and UBE2S in liver cancer (1238 samples from the Cancer Genome Atlas). A: Genetic alteration occurred in UBE2C, UBE2T, and UBE2S in HCC; B: UBE2T and UBE2S, overall alteration frequency 6.23% (23/369 cases) in hepatocellular carcinoma including 22 cases implication and 1 case of mutation. In hepatobiliary cancer type, the alteration frequency is 0.28 (2/712) with 1 case of amplification and 1 case of mutation; C: UBE2T genetic alteration frequency 5.69% (21/369 cases) categorized by cancer type; D: UBE2S genetic alteration frequency 0.54% (2/369 cases) in HCC (1 case amplification and 1 case mutation); In hepatobiliary cancer, UBE2S alteration frequency is 0.28% (2/712 cases) (1 case amplification and 1 case mutation).

UBE2 family members play a role in the development and prognosis of cancers[37,38], such as ovarian cancer. It has been shown that the mRNA expression of UBE2A in liver cancer cell lines (*e.g.*, HepG2 and Huh-7) was significantly higher compared to that in normal liver cancer line HL-7702. Meanwhile, UBE2A mRNA and protein were highly expressed in HCC tumor tissues than those in the adjacent normal tissues[39]. In HCC, qPCR data showed that the expression of UBE2S was significantly increased in HCC samples compared to non-tumor liver tissues[40]. Another study showed that the expression of UBE2T mRNA and protein was significantly increased in HCC tissues compared to adjacent non-tumor tissues. A molecular mechanism study showed that UBE2T can suppress the G2/M transition of hepatoma cells by regulating cyclin B1 and cyclin-dependent kinase 1 expression[41]. A recent study showed that the expression of UBE2T can be regulated by microRNA miR-212-5p, and overexpression of UBE2T can promote HCC cell proliferation and migration[42]. In this study, we have demonstrated that overexpression of UBE2C, UBE2T, and UBE2S was associated with poor prognosis and shorter survival time. These results indicate the gene expression levels of three genes might be useful to assist to predict the outcome of HCC. Remarkably, our analysis revealed that HCC tumors with *TP53* mutant status exhibited significantly higher expression levels of those genes compared with *TP53* non-mutant status in tumor samples. This finding shows the potential correlation between the



DOI: 10.4254/wjh.v14.i5.956 Copyright ©The Author(s) 2022.

Figure 5 UBE2C, UBE2T, and UBE2S mRNA expression in different cell types. A: UBE2C expressed genes in each cell cluster of scRNA-seq data; B: Bar plot of the transcript abundance of UBE2C in different cell types based on the scRNA-seq data. The level of UBE2C mRNA was represented by the mean pTPM (Protein-coding transcripts per million); C: UBE2T expressed genes in each cell cluster; D: Bar plot of the transcript abundance of UBE2T in different cell types based on the scRNA-seq data. The level of UBE2T mRNA was represented by the mean pTPM; E: UBE2S expressed genes in each cell cluster; F: Bar plot of the transcript abundance of UBE2S in different cell types based on the scRNA-seq data. The level of UBE2S mRNA was represented by the mean pTPM (Colored according to cell type group); G: Heat map of the expression level of UBE2C, UBE2T, and UBE2S. (Color key from 0-1 represent low-high expression).



DOI: 10.4254/wjh.v14.i5.956 Copyright ©The Author(s) 2022.

Figure 6 UBE2C, UBE2T, and UBE2S protein expression in cell lines. A: UBE2C was mainly expressed in cytosol and plasma membrane; B: UBE2T was mainly expressed in nucleoli or nucleoplasm; C: UBE2S was highly expressed in cytosol and plasma membrane and less expressed in nucleoli.

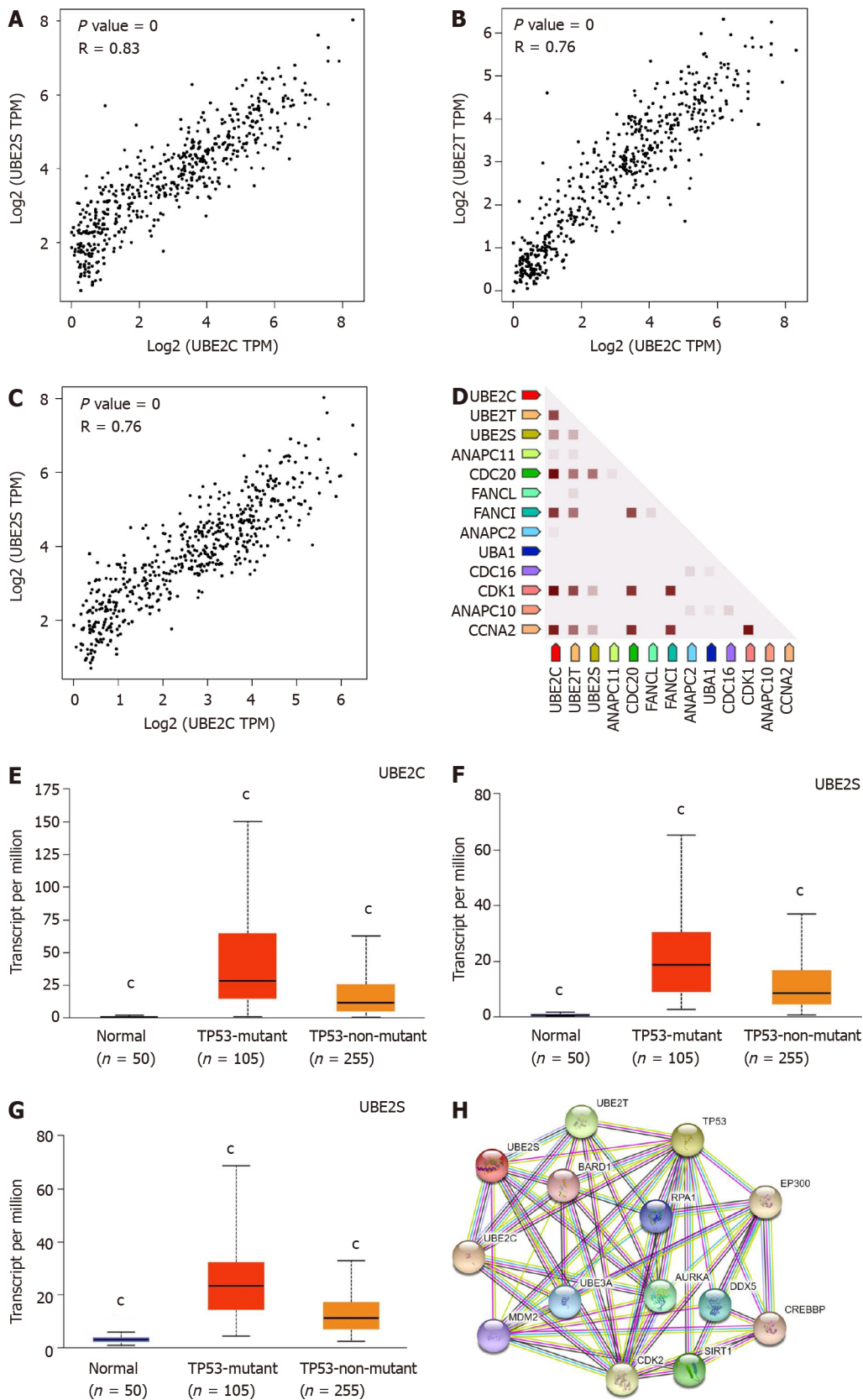
overexpression of investigated genes and *TP53* mutation status, as well as their contribution to HCC progression. A further mechanistic study needs to be investigated in the field.

From the therapeutic and treatment standpoint, considering the significant roles of UBE2C[43,44], UBE2T[33,45], and UBE2S[46,47] in the ubiquitination process, which contributes to the cellular function and their close association with tumor cell's function, UBE2C, UBE2T, and UBE2S could be used as a diagnostic biomarker to assist the diagnosis and prediction of the progression of HCC as mentioned above. Most importantly, the causation of the higher level of UBE2 expression, as well as the contributing effect of those highly expressed *UBE2* genes on the disease outcome should be thoroughly investigated for further exploration of the effective therapeutic strategy discovery.

Further studies from following aspects, such as (1) Identification of causing factors of UBE2 overexpression; (2) investigation of the underlying mechanism on overexpression of *UBE2* genes causing disease severity and poor survival outcome of patients; (3) exploration of the associated therapeutic targets of UBE2; (4) the roles of co-expressed genes from the analysis of protein-protein network in HCC; and (5) the relationship of p53 mutation with UBE2 expression; will be studied in the future research to better understand the role of three *UBE2* genes in liver cancer.

CONCLUSION

This bioinformatics study sheds light on the important roles of UBE2C, UBE2T, UBE2S for HCC diagnostic and prognostic as potential biomarkers. In addition, it is appealing to further explore the correlation of those genes with TP53 mutation in HCC and the related mechanisms.



DOI: 10.4254/wjh.v14.i5.956 Copyright ©The Author(s) 2022.

Figure 7 UBE2C, UBE2T, and UBE2S expression in homo sapiens and protein-protein interaction network. A: Co-expression of UBE2C and UBE2S; B: Co-expression of UBE2C and UBE2T; C: Co-expression of UBE2T and UBE2S; D: Co-expression of UBE2C, UBE2T, and UBE2S predicts functional association. In the triangle matrices above, the intensity of the color indicates the level of confidence that two proteins are functionally associated in Homo sapiens. Figures E-G showed the expression of UBE2C, UBE2T, and UBE2S in HCC based on TP53 mutation status. TCGA samples for analysis; E: UBE2C expression in normal, HCC with TP53 mutation, and HCC non-TP53 mutation samples; F: UBE2T expression in normal, HCC with TP53 mutation, and HCC non-TP53 mutation samples; G: UBE2S expression in normal, HCC with TP53 mutation, and HCC non-TP53 mutation samples. (*P value < 0.001 Compared with other two groups); H:

Protein-protein interaction of functional enrichment of queried network using query input of UBE2C, UBE2T, UBE2S, and TP53.

ARTICLE HIGHLIGHTS

Research background

The expression of three ubiquitin-conjugating enzymes 2 (UBE2) including UBE2C, UBE2T, and UBE2S was significantly increased in HCC samples compared to non-tumor tissues.

Research motivation

To explore potential diagnostic and prognostic markers for HCC.

Research objectives

To identify the potential of UBE2C, UBE2T, and UBE2S as potential biomarkers as HCC.

Research methods

Online database was analyzed with different bioinformatic tools.

Research results

Our data showed that *UBE2C*, *UBE2T*, and *UBE2S* genes were overexpressed in hepatocellular carcinoma (HCC) samples compared to non-tumor tissues. Dependent on the cancer progression stage, three *UBE2* genes showed higher expression in tumor tissues at all four stages compared to non-tumor control samples. Furthermore, a significantly higher expression of these genes was found in stage 2 and stage 3 cancers compared to stage 1 cancer. Additionally, overexpression of those genes was negatively associated with prognostic outcome and overall survival time. Patients with TP53 mutation showed a higher expression level of three *UBE2* genes, indicating an association between UBE2 expression with p53 function.

Research conclusions

This bioinformatics study sheds light on the important roles of UBE2C, UBE2T, UBE2S for HCC diagnostic and prognostic as potential biomarkers. In addition, it is appealing to further explore the correlation of those genes with TP53 mutation in HCC and the related mechanisms.

Research perspectives

Further studies from following aspects, such as (1) Identification of causing factors of UBE2 overexpression; (2) investigation of the underlying mechanism on overexpression of *UBE2* genes causing disease severity and poor survival outcome of patients; (3) exploration of the associated therapeutic targets of UBE2; (4) the roles of co-expressed genes from the analysis of protein-protein network in HCC; and (5) the relationship of p53 mutation with UBE2 expression; will be studied in the future research to better understand the role of three *UBE2* genes in liver cancer.

FOOTNOTES

Author contributions: Zhang CY and Yang M conceived the idea for this study and collected and analyzed the data, wrote, finalized the manuscript letter, and contributed equally; All authors approved the submitted version and published version.

Institutional review board statement: This study was performed without animal and human studies.

Institutional animal care and use committee statement: This study was performed without animal and human studies.

Conflict-of-interest statement: Both authors declared that there was no conflict of interest with the content of this study.

Data sharing statement: All the data analyzed in this study originated from publicly available The Cancer Genome Atlas database (TCGA Research Network: <https://www.cancer.gov/tcga>).

ARRIVE guidelines statement: The authors have read the ARRIVE guidelines, and the manuscript was prepared and revised according to the ARRIVE guidelines.

Open-Access: This article is an open-access article that was selected by an in-house editor and fully peer-reviewed by

external reviewers. It is distributed in accordance with the Creative Commons Attribution NonCommercial (CC BY-NC 4.0) license, which permits others to distribute, remix, adapt, build upon this work non-commercially, and license their derivative works on different terms, provided the original work is properly cited and the use is non-commercial. See: <https://creativecommons.org/licenses/by-nc/4.0/>

Country/Territory of origin: United States

ORCID number: Chun-Ye Zhang 0000-0003-2567-029X; Ming Yang 0000-0002-4895-5864.

S-Editor: Liu JH

L-Editor: A

P-Editor: Liu JH

REFERENCES

- 1 **Sung H**, Ferlay J, Siegel RL, Laversanne M, Soerjomataram I, Jemal A, Bray F. Global Cancer Statistics 2020: GLOBOCAN Estimates of Incidence and Mortality Worldwide for 36 Cancers in 185 Countries. *CA Cancer J Clin* 2021; **71**: 209-249 [PMID: 33538338 DOI: 10.3322/caac.21660]
- 2 **Zhang C**, Yang M. The Emerging Factors and Treatment Options for NAFLD-Related Hepatocellular Carcinoma. *Cancers (Basel)* 2021; **13** [PMID: 34359642 DOI: 10.3390/cancers13153740]
- 3 **Zhang C**, Liu S, Yang M. Hepatocellular Carcinoma and Obesity, Type 2 Diabetes Mellitus, Cardiovascular Disease: Causing Factors, Molecular Links, and Treatment Options. *Front Endocrinol (Lausanne)* 2021; **12**: 808526 [PMID: 35002979 DOI: 10.3389/fendo.2021.808526]
- 4 **Zhang C**, Yang M, Ericsson AC. The Potential Gut Microbiota-Mediated Treatment Options for Liver Cancer. *Front Oncol* 2020; **10**: 524205 [PMID: 33163393 DOI: 10.3389/fonc.2020.524205]
- 5 **Llovet JM**, Kelley RK, Villanueva A, Singal AG, Pikarsky E, Roayaie S, Lencioni R, Koike K, Zucman-Rossi J, Finn RS. Hepatocellular carcinoma. *Nat Rev Dis Primers* 2021; **7**: 6 [PMID: 33479224 DOI: 10.1038/s41572-020-00240-3]
- 6 **Shi D**, Grossman SR. Ubiquitin becomes ubiquitous in cancer: emerging roles of ubiquitin ligases and deubiquitinases in tumorigenesis and as therapeutic targets. *Cancer Biol Ther* 2010; **10**: 737-747 [PMID: 20930542 DOI: 10.4161/cbt.10.8.13417]
- 7 **Popovic D**, Vucic D, Dikic I. Ubiquitination in disease pathogenesis and treatment. *Nat Med* 2014; **20**: 1242-1253 [PMID: 25375928 DOI: 10.1038/nm.3739]
- 8 **Pickart CM**, Eddins MJ. Ubiquitin: structures, functions, mechanisms. *Biochim Biophys Acta* 2004; **1695**: 55-72 [PMID: 15571809 DOI: 10.1016/j.bbamer.2004.09.019]
- 9 **Jiang L**, Bao Y, Luo C, Hu G, Huang C, Ding X, Sun K, Lu Y. Knockdown of ubiquitin-conjugating enzyme E2C/UbcH10 expression by RNA interference inhibits glioma cell proliferation and enhances cell apoptosis in vitro. *J Cancer Res Clin Oncol* 2010; **136**: 211-217 [PMID: 19657671 DOI: 10.1007/s00432-009-0651-z]
- 10 **van Ree JH**, Jeganathan KB, Malureanu L, van Deursen JM. Overexpression of the E2 ubiquitin-conjugating enzyme UbcH10 causes chromosome missegregation and tumor formation. *J Cell Biol* 2010; **188**: 83-100 [PMID: 20065091 DOI: 10.1083/jcb.200906147]
- 11 **Ieta K**, Ojima E, Tanaka F, Nakamura Y, Haraguchi N, Mimori K, Inoue H, Kuwano H, Mori M. Identification of overexpressed genes in hepatocellular carcinoma, with special reference to ubiquitin-conjugating enzyme E2C gene expression. *Int J Cancer* 2007; **121**: 33-38 [PMID: 17354233 DOI: 10.1002/ijc.22605]
- 12 **Xiong Y**, Lu J, Fang Q, Lu Y, Xie C, Wu H, Yin Z. UBE2C functions as a potential oncogene by enhancing cell proliferation, migration, invasion, and drug resistance in hepatocellular carcinoma cells. *Biosci Rep* 2019; **39** [PMID: 30914455 DOI: 10.1042/BSR20182384]
- 13 **Schultz-Rogers L**, Lach FP, Rickman K, Ferrer A, Mangaonkar AA, Schwab TL, Schmitz CT, Clark KJ, Dsouza NR, Zimmermann MT, Litzow M, Jacobi N, Klee EW, Smogorzewska A, Patnaik MM. A homozygous missense variant in UBE2T is associated with a mild Fanconi anemia phenotype. *Haematologica* 2021; **106**: 1188-1192 [PMID: 32646888 DOI: 10.3324/haematol.2020.259275]
- 14 **Hira A**, Yoshida K, Sato K, Okuno Y, Shiraishi Y, Chiba K, Tanaka H, Miyano S, Shimamoto A, Tahara H, Ito E, Kojima S, Kurumizaka H, Ogawa S, Takata M, Yabe H, Yabe M. Mutations in the gene encoding the E2 conjugating enzyme UBE2T cause Fanconi anemia. *Am J Hum Genet* 2015; **96**: 1001-1007 [PMID: 26046368 DOI: 10.1016/j.ajhg.2015.04.022]
- 15 **Machida YJ**, Machida Y, Chen Y, Gurtan AM, Kupfer GM, D'Andrea AD, Dutta A. UBE2T is the E2 in the Fanconi anemia pathway and undergoes negative autoregulation. *Mol Cell* 2006; **23**: 589-596 [PMID: 16916645 DOI: 10.1016/j.molcel.2006.06.024]
- 16 **Alpi A**, Langevin F, Mosedale G, Machida YJ, Dutta A, Patel KJ. UBE2T, the Fanconi anemia core complex, and FANCD2 are recruited independently to chromatin: a basis for the regulation of FANCD2 monoubiquitination. *Mol Cell Biol* 2007; **27**: 8421-8430 [PMID: 17938197 DOI: 10.1128/mcb.00504-07]
- 17 **Ueki T**, Park JH, Nishidate T, Kijima K, Hirata K, Nakamura Y, Katagiri T. Ubiquitination and downregulation of BRCA1 by ubiquitin-conjugating enzyme E2T overexpression in human breast cancer cells. *Cancer Res* 2009; **69**: 8752-8760 [PMID: 19887602 DOI: 10.1158/0008-5472.CAN-09-1809]
- 18 **Liu J**, Liu X. UBE2T silencing inhibited non-small cell lung cancer cell proliferation and invasion by suppressing the wnt/ β -catenin signaling pathway. *Int J Clin Exp Pathol* 2017; **10**: 9482-9488 [PMID: 31966822]
- 19 **Perez-Peña J**, Corrales-Sánchez V, Amir E, Pandiella A, Ocana A. Ubiquitin-conjugating enzyme E2T (UBE2T) and

- denticless protein homolog (DTL) are linked to poor outcome in breast and lung cancers. *Sci Rep* 2017; **7**: 17530 [PMID: 29235520 DOI: 10.1038/s41598-017-17836-7]
- 20 **Luo C**, Yao Y, Yu Z, Zhou H, Guo L, Zhang J, Cao H, Zhang G, Li Y, Jiao Z. UBE2T knockdown inhibits gastric cancer progression. *Oncotarget* 2017; **8**: 32639-32654 [PMID: 28427240 DOI: 10.18632/oncotarget.15947]
 - 21 **Garnett MJ**, Mansfeld J, Godwin C, Matsusaka T, Wu J, Russell P, Pines J, Venkitaraman AR. UBE2S elongates ubiquitin chains on APC/C substrates to promote mitotic exit. *Nat Cell Biol* 2009; **11**: 1363-1369 [PMID: 19820702 DOI: 10.1038/ncb1983]
 - 22 **Ayesha AK**, Hyodo T, Asano E, Sato N, Mansour MA, Ito S, Hamaguchi M, Senga T. UBE2S is associated with malignant characteristics of breast cancer cells. *Tumour Biol* 2016; **37**: 763-772 [PMID: 26245992 DOI: 10.1007/s13277-015-3863-7]
 - 23 **Liu Z**, Xu L. UBE2S promotes the proliferation and survival of human lung adenocarcinoma cells. *BMB Rep* 2018; **51**: 642-647 [PMID: 30545437 DOI: 10.5483/BMBRep.2018.51.12.138]
 - 24 **Pan YH**, Yang M, Liu LP, Wu DC, Li MY, Su SG. UBE2S enhances the ubiquitination of p53 and exerts oncogenic activities in hepatocellular carcinoma. *Biochem Biophys Res Commun* 2018; **503**: 895-902 [PMID: 29928880 DOI: 10.1016/j.bbrc.2018.06.093]
 - 25 **Cerami E**, Gao J, Dogrusoz U, Gross BE, Sumer SO, Aksoy BA, Jacobsen A, Byrne CJ, Heuer ML, Larsson E, Antipin Y, Reva B, Goldberg AP, Sander C, Schultz N. The cBio cancer genomics portal: an open platform for exploring multidimensional cancer genomics data. *Cancer Discov* 2012; **2**: 401-404 [PMID: 22588877 DOI: 10.1158/2159-8290.CD-12-0095]
 - 26 **Gao J**, Aksoy BA, Dogrusoz U, Dresdner G, Gross B, Sumer SO, Sun Y, Jacobsen A, Sinha R, Larsson E, Cerami E, Sander C, Schultz N. Integrative analysis of complex cancer genomics and clinical profiles using the cBioPortal. *Sci Signal* 2013; **6**: pii [PMID: 23550210 DOI: 10.1126/scisignal.2004088]
 - 27 **Tang Z**, Kang B, Li C, Chen T, Zhang Z. GEPIA2: an enhanced web server for large-scale expression profiling and interactive analysis. *Nucleic Acids Res* 2019; **47**: W556-W560 [PMID: 31114875 DOI: 10.1093/nar/gkz430]
 - 28 **Chandrashekar DS**, Bashel B, Balasubramanya SAH, Creighton CJ, Ponce-Rodriguez I, Chakravarthi BVSK, Varambally S. UALCAN: A Portal for Facilitating Tumor Subgroup Gene Expression and Survival Analyses. *Neoplasia* 2017; **19**: 649-658 [PMID: 28732212 DOI: 10.1016/j.neo.2017.05.002]
 - 29 **Karlsson M**, Zhang C, Méar L, Zhong W, Digre A, Katona B, Sjöstedt E, Butler L, Odeberg J, Dusart P, Edfors F, Oksvold P, von Feilitzen K, Zwahlen M, Arif M, Altay O, Li X, Ozcan M, Mardinoglu A, Fagerberg L, Mulder J, Luo Y, Ponten F, Uhlén M, Lindskog C. A single-cell type transcriptomics map of human tissues. *Sci Adv* 2021; **7** [PMID: 34321199 DOI: 10.1126/sciadv.abh2169]
 - 30 **Szklarczyk D**, Gable AL, Lyon D, Junge A, Wyder S, Huerta-Cepas J, Simonovic M, Doncheva NT, Morris JH, Bork P, Jensen LJ, Mering CV. STRING v11: protein-protein association networks with increased coverage, supporting functional discovery in genome-wide experimental datasets. *Nucleic Acids Res* 2019; **47**: D607-D613 [PMID: 30476243 DOI: 10.1093/nar/gky1131]
 - 31 **Liu Y**, Zhao R, Chi S, Zhang W, Xiao C, Zhou X, Zhao Y, Wang H. UBE2C Is Upregulated by Estrogen and Promotes Epithelial-Mesenchymal Transition via p53 in Endometrial Cancer. *Mol Cancer Res* 2020; **18**: 204-215 [PMID: 31662448 DOI: 10.1158/1541-7786.MCR-19-0561]
 - 32 **Liu LP**, Yang M, Peng QZ, Li MY, Zhang YS, Guo YH, Chen Y, Bao SY. UBE2T promotes hepatocellular carcinoma cell growth via ubiquitination of p53. *Biochem Biophys Res Commun* 2017; **493**: 20-27 [PMID: 28935368 DOI: 10.1016/j.bbrc.2017.09.091]
 - 33 **Wu M**, Li X, Huang W, Chen Y, Wang B, Liu X. Ubiquitin-conjugating enzyme E2T(UBE2T) promotes colorectal cancer progression by facilitating ubiquitination and degradation of p53. *Clin Res Hepatol Gastroenterol* 2021; **45**: 101493 [PMID: 32736946 DOI: 10.1016/j.clinre.2020.06.018]
 - 34 **Wang W**, Wei C. Advances in the early diagnosis of hepatocellular carcinoma. *Genes Dis* 2020; **7**: 308-319 [PMID: 32884985 DOI: 10.1016/j.gendis.2020.01.014]
 - 35 **Forner A**, Reig M, Bruix J. Hepatocellular carcinoma. *Lancet* 2018; **391**: 1301-1314 [PMID: 29307467 DOI: 10.1016/S0140-6736(18)30010-2]
 - 36 **Zhang C**, Yang M. Targeting T Cell Subtypes for NAFLD and NAFLD-Related HCC Treatment: An Opinion. *Front Med (Lausanne)* 2021; **8**: 789859 [PMID: 34869507 DOI: 10.3389/fmed.2021.789859]
 - 37 **Zou R**, Xu H, Li F, Wang S, Zhu L. Increased Expression of UBE2T Predicting Poor Survival of Epithelial Ovarian Cancer: Based on Comprehensive Analysis of UBE2s, Clinical Samples, and the GEO Database. *DNA Cell Biol* 2021; **40**: 36-60 [PMID: 33180631 DOI: 10.1089/dna.2020.5823]
 - 38 **Hu W**, Xiao L, Cao C, Hua S, Wu D. UBE2T promotes nasopharyngeal carcinoma cell proliferation, invasion, and metastasis by activating the AKT/GSK3 β /catenin pathway. *Oncotarget* 2016; **7**: 15161-15172 [PMID: 26943030 DOI: 10.18632/oncotarget.7805]
 - 39 **Shen JD**, Fu SZ, Ju LL, Wang YF, Dai F, Liu ZX, Ji HZ, Shao JG, Bian ZL. High expression of ubiquitin-conjugating enzyme E2A predicts poor prognosis in hepatocellular carcinoma. *Oncol Lett* 2018; **15**: 7362-7368 [PMID: 29725449 DOI: 10.3892/ol.2018.8189]
 - 40 **Ma Y**, Li K, Li S, Liang B, Liu Q, Mo Z. Prognostic value of ubiquitin-conjugating enzyme E2 S overexpression in hepatocellular carcinoma. *Int J Biol Macromol* 2018; **119**: 225-231 [PMID: 30041036 DOI: 10.1016/j.ijbiomac.2018.07.136]
 - 41 **Liu LL**, Zhu JM, Yu XN, Zhu HR, Shi X, Bilegsaikhan E, Guo HY, Wu J, Shen XZ. UBE2T promotes proliferation via G2/M checkpoint in hepatocellular carcinoma. *Cancer Manag Res* 2019; **11**: 8359-8370 [PMID: 31571992 DOI: 10.2147/CMAR.S202631]
 - 42 **Ren X**, Li A, Ying E, Fang J, Li M, Yu J. Upregulation of ubiquitin-conjugating enzyme E2T (UBE2T) predicts poor prognosis and promotes hepatocellular carcinoma progression. *Bioengineered* 2021; **12**: 1530-1542 [PMID: 33934686 DOI: 10.1080/21655979.2021.1918507]
 - 43 **Pan B**, Yin S, Peng F, Liu C, Liang H, Su J, Hsiao WLW, Cai Y, Luo D, Xia C. Vorinostat targets UBE2C to reverse epithelial-mesenchymal transition and control cervical cancer growth through the ubiquitination pathway. *Eur J Pharmacol*

- 2021; **908**: 174399 [PMID: [34331954](#) DOI: [10.1016/j.ejphar.2021.174399](#)]
- 44 **Li R**, Pang XF, Huang ZG, Yang LH, Peng ZG, Ma J, He RQ. Overexpression of UBE2C in esophageal squamous cell carcinoma tissues and molecular analysis. *BMC Cancer* 2021; **21**: 996 [PMID: [34488675](#) DOI: [10.1186/s12885-021-08634-6](#)]
- 45 **Yu Z**, Jiang X, Qin L, Deng H, Wang J, Ren W, Li H, Zhao L, Liu H, Yan H, Shi W, Wang Q, Luo C, Long B, Zhou H, Sun H, Jiao Z. A novel UBE2T inhibitor suppresses Wnt/ β -catenin signaling hyperactivation and gastric cancer progression by blocking RACK1 ubiquitination. *Oncogene* 2021; **40**: 1027-1042 [PMID: [33323973](#) DOI: [10.1038/s41388-020-01572-w](#)]
- 46 **Zhang RY**, Liu ZK, Wei D, Yong YL, Lin P, Li H, Liu M, Zheng NS, Liu K, Hu CX, Yang XZ, Chen ZN, Bian H. UBE2S interacting with TRIM28 in the nucleus accelerates cell cycle by ubiquitination of p27 to promote hepatocellular carcinoma development. *Signal Transduct Target Ther* 2021; **6**: 64 [PMID: [33589597](#) DOI: [10.1038/s41392-020-00432-z](#)]
- 47 **Tang H**, Fang T, Ji M, Wang JP, Song LL, Zhang QY, Wu JS. UBE2S exerts oncogenic activities in urinary bladder cancer by ubiquitinating TSC1. *Biochem Biophys Res Commun* 2021; **578**: 7-14 [PMID: [34520980](#) DOI: [10.1016/j.bbrc.2021.08.057](#)]



Published by **Baishideng Publishing Group Inc**
7041 Koll Center Parkway, Suite 160, Pleasanton, CA 94566, USA

Telephone: +1-925-3991568

E-mail: bpgoffice@wjgnet.com

Help Desk: <https://www.f6publishing.com/helpdesk>

<https://www.wjgnet.com>

