

World Journal of *Clinical Cases*

World J Clin Cases 2022 October 16; 10(29): 10391-10822



Contents

Thrice Monthly Volume 10 Number 29 October 16, 2022

STANDARD AND CONSENSUS

- 10391** Baishideng's *Reference Citation Analysis* database announces the first *Article Influence Index* of multidisciplinary scholars
Wang JL, Ma YJ, Ma L, Ma N, Guo DM, Ma LS

REVIEW

- 10399** Cholecystectomy for asymptomatic gallstones: Markov decision tree analysis
Lee BJH, Yap QV, Low JK, Chan YH, Shelat VG
- 10413** Liver transplantation for hepatocellular carcinoma: Historical evolution of transplantation criteria
Ince V, Sahin TT, Akbulut S, Yilmaz S

MINIREVIEWS

- 10428** Prostate only radiotherapy using external beam radiotherapy: A clinician's perspective
Lee JW, Chung MJ

ORIGINAL ARTICLE

Retrospective Study

- 10435** Age-adjusted NT-proBNP could help in the early identification and follow-up of children at risk for severe multisystem inflammatory syndrome associated with COVID-19 (MIS-C)
Rodriguez-Gonzalez M, Castellano-Martinez A
- 10451** Clinicopathological characteristics and prognosis of gastric signet ring cell carcinoma
Tian HK, Zhang Z, Ning ZK, Liu J, Liu ZT, Huang HY, Zong Z, Li H
- 10467** Development and validation of a prognostic nomogram for decompensated liver cirrhosis
Zhang W, Zhang Y, Liu Q, Nie Y, Zhu X

Observational Study

- 10478** Effect of medical care linkage-continuous management mode in patients with posterior circulation cerebral infarction undergoing endovascular interventional therapy
Zhu FX, Ye Q
- 10487** Effect of the COVID-19 pandemic on patients with presumed diagnosis of acute appendicitis
Akbulut S, Tuncer A, Ogut Z, Sahin TT, Koc C, Guldogan E, Karabulut E, Tanriverdi ES, Ozer A

EVIDENCE-BASED MEDICINE

- 10501** Delineation of a SMARCA4-specific competing endogenous RNA network and its function in hepatocellular carcinoma

Zhang L, Sun T, Wu XY, Fei FM, Gao ZZ

SYSTEMATIC REVIEWS

- 10516** Comparison of laboratory parameters, clinical symptoms and clinical outcomes of COVID-19 and influenza in pediatric patients: A systematic review and meta-analysis

Yu B, Chen HH, Hu XF, Mai RZ, He HY

CASE REPORT

- 10529** Surgical treatment of bipolar segmental clavicle fracture: A case report
Liang L, Chen XL, Chen Y, Zhang NN
- 10535** Multiple disciplinary team management of rare primary splenic malignancy: Two case reports
Luo H, Wang T, Xiao L, Wang C, Yi H
- 10543** Klippel-Trenaunay-Weber syndrome with ischemic stroke: A case report
Lee G, Choi T
- 10550** Vedolizumab in the treatment of immune checkpoint inhibitor-induced colitis: Two case reports
Zhang Z, Zheng CQ
- 10559** Novel way of patent foramen ovale detection and percutaneous closure by intracardiac echocardiography: A case report
Han KN, Yang SW, Zhou YJ
- 10565** Treatment failure in a patient infected with *Listeria* sepsis combined with latent meningitis: A case report
Wu GX, Zhou JY, Hong WJ, Huang J, Yan SQ
- 10575** Three-in-one incidence of hepatocellular carcinoma, cholangiocellular carcinoma, and neuroendocrine carcinoma: A case report
Wu Y, Xie CB, He YH, Ke D, Huang Q, Zhao KF, Shi RS
- 10583** Intestinal microbiome changes in an infant with right atrial isomerism and recurrent necrotizing enterocolitis: A case report and review of literature
Kaplina A, Zaikova E, Ivanov A, Volkova Y, Alkhova T, Nikiforov V, Latypov A, Khavkina M, Fedoseeva T, Pervunina T, Skorobogatova Y, Volkova S, Ulyantsev V, Kalinina O, Sitkin S, Petrova N
- 10600** *Serratia fonticola* and its role as a single pathogen causing emphysematous pyelonephritis in a non-diabetic patient: A case report
Villasuso-Alcocer V, Flores-Tapia JP, Perez-Garfias F, Rochel-Perez A, Mendez-Dominguez N
- 10606** Cardiac myxoma shedding leads to lower extremity arterial embolism: A case report
Meng XH, Xie LS, Xie XP, Liu YC, Huang CP, Wang LJ, Zhang GH, Xu D, Cai XC, Fang X

- 10614** Extracorporeal membrane oxygenation in curing a young man after modified Fontan operation: A case report
Guo HB, Tan JB, Cui YC, Xiong HF, Li CS, Liu YF, Sun Y, Pu L, Xiang P, Zhang M, Hao JJ, Yin NN, Hou XT, Liu JY
- 10622** Wandering small intestinal stromal tumor: A case report
Su JZ, Fan SF, Song X, Cao LJ, Su DY
- 10629** Acute mesenteric ischemia secondary to oral contraceptive-induced portomesenteric and splenic vein thrombosis: A case report
Zhao JW, Cui XH, Zhao WY, Wang L, Xing L, Jiang XY, Gong X, Yu L
- 10638** Perioperative anesthesia management in pediatric liver transplant recipient with atrial septal defect: A case report
Liu L, Chen P, Fang LL, Yu LN
- 10647** Multiple tophi deposits in the spine: A case report
Chen HJ, Chen DY, Zhou SZ, Chi KD, Wu JZ, Huang FL
- 10655** Myeloproliferative neoplasms complicated with β -thalassemia: Two case report
Xu NW, Li LJ
- 10663** Synchronous renal pelvis carcinoma associated with small lymphocytic lymphoma: A case report
Yang HJ, Huang X
- 10670** *Leclercia adecarboxylata* infective endocarditis in a man with mitral stenosis: A case report and review of the literature
Tan R, Yu JQ, Wang J, Zheng RQ
- 10681** Progressive ataxia of cerebrotendinous xanthomatosis with a rare c.255+1G>T splice site mutation: A case report
Chang YY, Yu CQ, Zhu L
- 10689** Intravesical explosion during transurethral resection of bladder tumor: A case report
Xu CB, Jia DS, Pan ZS
- 10695** Submucosal esophageal abscess evolving into intramural submucosal dissection: A case report
Jiao Y, Sikong YH, Zhang AJ, Zuo XL, Gao PY, Ren QG, Li RY
- 10701** Immune checkpoint inhibitor-associated arthritis in advanced pulmonary adenocarcinoma: A case report
Yang Y, Huang XJ
- 10708** Chondroid syringoma of the lower back simulating lipoma: A case report
Huang QF, Shao Y, Yu B, Hu XP
- 10713** Tension-reduced closure of large abdominal wall defect caused by shotgun wound: A case report
Li Y, Xing JH, Yang Z, Xu YJ, Yin XY, Chi Y, Xu YC, Han YD, Chen YB, Han Y

- 10721** Myocardial bridging phenomenon is not invariable: A case report
Li HH, Liu MW, Zhang YF, Song BC, Zhu ZC, Zhao FH
- 10728** Recurrent atypical leiomyoma in bladder trigone, confused with uterine fibroids: A case report
Song J, Song H, Kim YW
- 10735** Eczema herpeticum *vs* dermatitis herpetiformis as a clue of dedicator of cytokinesis 8 deficiency diagnosis: A case report
Alshengeti A
- 10742** Cutaneous allergic reaction to subcutaneous vitamin K₁: A case report and review of literature
Zhang M, Chen J, Wang CX, Lin NX, Li X
- 10755** Perithyroidal hemorrhage caused by hydrodissection during radiofrequency ablation for benign thyroid nodules: Two case reports
Zheng BW, Wu T, Yao ZC, Ma YP, Ren J
- 10763** Malignant giant cell tumors of the tendon sheath of the right hip: A case report
Huang WP, Gao G, Yang Q, Chen Z, Qiu YK, Gao JB, Kang L
- 10772** Atypical Takotsubo cardiomyopathy presenting as acute coronary syndrome: A case report
Wang ZH, Fan JR, Zhang GY, Li XL, Li L
- 10779** Secondary light chain amyloidosis with Waldenström's macroglobulinemia and internodal marginal zone lymphoma: A case report
Zhao ZY, Tang N, Fu XJ, Lin LE
- 10787** Bilateral occurrence of sperm granulomas in the left spermatic cord and on the right epididymis: A case report
Ly DY, Xie HJ, Cui F, Zhou HY, Shuang WB
- 10794** Glucocorticoids combined with tofacitinib in the treatment of Castleman's disease: A case report
Liu XR, Tian M
- 10803** Giant bilateral scrotal lipoma with abnormal somatic fat distribution: A case report
Chen Y, Li XN, Yi XL, Tang Y
- 10811** Elevated procalcitonin levels in the absence of infection in procalcitonin-secreting hepatocellular carcinoma: A case report
Zeng JT, Wang Y, Wang Y, Luo ZH, Qing Z, Zhang Y, Zhang YL, Zhang JF, Li DW, Luo XZ

LETTER TO THE EDITOR

- 10817** "Helicobacter pylori treatment guideline: An Indian perspective": Letter to the editor
Swarnakar R, Yadav SL
- 10820** Effect of gender on the reliability of COVID-19 rapid antigen test among elderly
Nori W, Akram W

ABOUT COVER

Editorial Board Member of *World Journal of Clinical Cases*, Natalia Stepanova, DSc, MD, PhD, Academic Research, Chief Doctor, Full Professor, Department of Nephrology and Dialysis, State Institution "Institute of Nephrology of the National Academy of Medical Sciences of Ukraine", Kyiv 04050, Ukraine. nmstep88@gmail.com

AIMS AND SCOPE

The primary aim of *World Journal of Clinical Cases* (WJCC, *World J Clin Cases*) is to provide scholars and readers from various fields of clinical medicine with a platform to publish high-quality clinical research articles and communicate their research findings online.

WJCC mainly publishes articles reporting research results and findings obtained in the field of clinical medicine and covering a wide range of topics, including case control studies, retrospective cohort studies, retrospective studies, clinical trials studies, observational studies, prospective studies, randomized controlled trials, randomized clinical trials, systematic reviews, meta-analysis, and case reports.

INDEXING/ABSTRACTING

The WJCC is now abstracted and indexed in Science Citation Index Expanded (SCIE, also known as SciSearch®), Journal Citation Reports/Science Edition, Current Contents®/Clinical Medicine, PubMed, PubMed Central, Scopus, Reference Citation Analysis, China National Knowledge Infrastructure, China Science and Technology Journal Database, and Superstar Journals Database. The 2022 Edition of Journal Citation Reports® cites the 2021 impact factor (IF) for WJCC as 1.534; IF without journal self cites: 1.491; 5-year IF: 1.599; Journal Citation Indicator: 0.28; Ranking: 135 among 172 journals in medicine, general and internal; and Quartile category: Q4. The WJCC's CiteScore for 2021 is 1.2 and Scopus CiteScore rank 2021: General Medicine is 443/826.

RESPONSIBLE EDITORS FOR THIS ISSUE

Production Editor: Hua-Ge Yin; Production Department Director: Xiang Li; Editorial Office Director: Jin-Lei Wang.

NAME OF JOURNAL

World Journal of Clinical Cases

ISSN

ISSN 2307-8960 (online)

LAUNCH DATE

April 16, 2013

FREQUENCY

Thrice Monthly

EDITORS-IN-CHIEF

Bao-Gan Peng, Jerzy Tadeusz Chudek, George Kontogeorgos, Maurizio Serati, Ja Hyeon Ku

EDITORIAL BOARD MEMBERS

<https://www.wjgnet.com/2307-8960/editorialboard.htm>

PUBLICATION DATE

October 16, 2022

COPYRIGHT

© 2022 Baishideng Publishing Group Inc

INSTRUCTIONS TO AUTHORS

<https://www.wjgnet.com/bpg/gerinfo/204>

GUIDELINES FOR ETHICS DOCUMENTS

<https://www.wjgnet.com/bpg/GerInfo/287>

GUIDELINES FOR NON-NATIVE SPEAKERS OF ENGLISH

<https://www.wjgnet.com/bpg/gerinfo/240>

PUBLICATION ETHICS

<https://www.wjgnet.com/bpg/GerInfo/288>

PUBLICATION MISCONDUCT

<https://www.wjgnet.com/bpg/gerinfo/208>

ARTICLE PROCESSING CHARGE

<https://www.wjgnet.com/bpg/gerinfo/242>

STEPS FOR SUBMITTING MANUSCRIPTS

<https://www.wjgnet.com/bpg/GerInfo/239>

ONLINE SUBMISSION

<https://www.f6publishing.com>



Wandering small intestinal stromal tumor: A case report

Jin-Zhan Su, Shu-Feng Fan, Xia Song, Lu-Jun Cao, Dong-Ying Su

Specialty type: Radiology, nuclear medicine and medical imaging

Provenance and peer review:

Unsolicited article; Externally peer reviewed.

Peer-review model: Single blind

Peer-review report's scientific quality classification

Grade A (Excellent): 0

Grade B (Very good): 0

Grade C (Good): C, C, C

Grade D (Fair): D

Grade E (Poor): 0

P-Reviewer: Elkady N, Egypt; Kinami S, Japan; Li WJ, United States; Samara AA, Greece

Received: May 11, 2022

Peer-review started: May 11, 2022

First decision: July 29, 2022

Revised: August 16, 2022

Accepted: September 7, 2022

Article in press: September 7, 2022

Published online: October 16, 2022



Jin-Zhan Su, Shu-Feng Fan, Xia Song, Dong-Ying Su, Department of Radiology, The Second Affiliated Hospital of Zhejiang Chinese Medical University, Hangzhou 310005, Zhejiang Province, China

Lu-Jun Cao, Department of Radiology, The Hospital of the Zhejiang University, Hangzhou 310058, Zhejiang Province, China

Corresponding author: Xia Song, MS, Department of Radiology, The Second Affiliated Hospital of Zhejiang Chinese Medical University, Hangzhou 310005, Zhejiang Province, China. xiasong0129@163.com

Abstract

BACKGROUND

The occurrence of gastrointestinal stromal tumors (GISTs) in the small intestine is rare, and a case of wandering small intestinal stromal tumor has been rarely reported to date. Dissemination of this case can help inform future diagnosis and effective treatment.

CASE SUMMARY

A 68-year-old patient presented to us with tarry stools. Computed tomography showed a mobile tumor moving widely within the abdominal cavity. As the laboratory data showed a low range of red blood cells and an immediate surgery was not indicated, we performed digital subtraction angiography and embolization to achieve hemostasis. Surgical resection was performed after the patient's condition improved. The tumor was successfully removed laparoscopically. Histological examination revealed submucosal GIST with infarction, which was of intermediate-risk, with mitotic count < 1 per 10 high-power field. Immunohistochemical studies revealed the following: CD117+, Dog1+, CD34+, SMA+, S100-, CK-, Des-, SOX-11-, STAT6-, Ki67 Hotspots 10%+. The patient was ultimately diagnosed with wandering small intestinal stromal tumor.

CONCLUSION

When a highly vascularized tumor is clinically encountered in the small intestine, the possibility of stromal tumors should be considered. However, when the tumor cannot be visualized at its original location, the possibility of tumor migration is considered.

Key Words: Wandering tumor; Gastrointestinal stromal tumors; Small intestine; Melena; Gastrointestinal hemorrhage; Case report

Core Tip: Stromal tumors of the small intestine are rare. Symptoms range from none to mass effect and hemorrhage. With nonspecific symptoms, computed tomography is helpful in visualizing contrast-enhancing lesions in the small intestine. In even rarer cases, these tumors may mobilize and produce symptoms that mimic conditions, such as intestinal torsion. Recognition of wandering stromal tumors of the small intestine facilitates the timely diagnosis and treatment. Evaluation includes imaging, digital subtraction angiography, and histopathology. Surgery remains the gold standard of treatment.

Citation: Su JZ, Fan SF, Song X, Cao LJ, Su DY. Wandering small intestinal stromal tumor: A case report. *World J Clin Cases* 2022; 10(29): 10622-10628

URL: <https://www.wjgnet.com/2307-8960/full/v10/i29/10622.htm>

DOI: <https://dx.doi.org/10.12998/wjcc.v10.i29.10622>

INTRODUCTION

Gastrointestinal stromal tumors (GISTs) originate from the interstitial cells of Cajal, which are dependent on stem cell factor receptor interaction, and express both KIT and CD34. Immunohistochemistry plays an important role in differentiating GISTs from leiomyomas and neurogenic tumors[1]. Histopathologic findings are the gold standard for diagnosing GISTs[2]. They become symptomatic if they enlarge, causing ulceration, bleeding (e.g., hematemesis, melena), and iron deficiency anemia. Tumors larger than 2 cm carry an increased risk of malignancy and hence are resected. The role of laparoscopy in the resection of GISTs is constantly being affirmed. Imatinib is a selective KIT inhibitor that achieves sustained clinical benefit and objective efficacy in most patients with GISTs. Tumors of intermediate- and high-risk require imatinib for 3 years after radical resection[3]. GISTs are the most common mesenchymal tumors of the gastrointestinal (GI) tract. However, wandering small intestinal stromal tumors are extremely rare. Herein, we report a case of a 68-year-old man presenting with a small intestinal mass that was diagnosed as a suspected wandering small intestinal stromal tumor. Computed tomography (CT) with contrast and digital subtraction angiography (DSA) of abdomen revealed an aberrant mass that wandered from the right upper quadrant to the left upper quadrant, before returning to the right lumbar region of the abdomen. The location of the mass varied from visit to visit. Surgery was performed, and the diagnosis was confirmed by histopathology. This study aims to enhance our understanding of this rare and intriguing condition.

CASE PRESENTATION

Chief complaints

A 68-year-old man presented to the emergency department with five episodes of tarry stools for 2 d, associated with persistent dull and diffuse abdominal pain.

History of present illness

Six years ago, the patient developed melena without manifesting any obvious symptoms and no abnormalities were observed in the findings of colonoscopy and gastroscopy, which were performed in another hospital. Further, the patient reported that the passage of black stool was repeated 2 to 3 times in the last 6 years, and his condition improved after he was administered Yunnan Baiyao and omeprazole. The specific medication regimen is unknown, and the patient terminated the medication after the bloody stool disappeared.

History of past illness

The patient had no known comorbidities or past illnesses.

Personal and family history

The patient had no relevant personal and family medical history.

Physical examination

On physical examination, the abdomen was negative for palpable masses and tenderness.

Laboratory examinations

Laboratory data showed a red blood cell mass of $1.57 \times 10^6/\mu\text{L}$ (normal range: $4.30\text{--}5.80 \times 10^6/\mu\text{L}$).

Imaging examinations

On admission, plain CT of the abdomen revealed an oval, well-circumscribed mass with soft-tissue attenuation, measuring 43 Hounsfield units (HU) on the right upper quadrant of the abdomen (Figure 1A). The mass dimensions were approximately $4.1 \text{ cm} \times 3.3 \text{ cm} \times 5.0 \text{ cm}$ in size. Contrast-enhanced abdominal CT scans 2 d later revealed a well-defined, non-homogenous enhanced lesion (density of 78 HU in arterial phase, 90 HU in venous phase), measuring $4.6 \text{ cm} \times 3.4 \text{ cm} \times 5.0 \text{ cm}$ in the left upper quadrant (Figure 1B). However, the mass present on the right upper quadrant had not been visualized. Clinical and imaging findings indicated a diagnosis of a highly vascularized, mobile small intestine tumor. We initially considered a GIST in the small intestine. DSA was performed because laboratory data showed a low range of red blood cells and immediate surgery was contraindicated. A selective superior mesenteric artery DSA revealed a mass in the left upper quadrant, with neoplastic vessels from the first branch of the jejunal artery. We observed visible contrast media retention in the intestinal lumen (Figure 2A). For selective embolization, we used a microcatheter (Progreat, TERUMO, Tokyo, Japan). The microcatheters were inserted as near as possible to the lesion, and the embolic materials containing polyvinyl alcohol (COOK Medical, Bloomington, IN, United States) were inserted. A repeat DSA confirmed complete mass staining disappearance. However, melena recurred on the 4th postoperative day. Laboratory data showed a low range of red blood cells ($2.16 \times 10^6/\mu\text{L}$). On repeat DSA, the first branch of the jejunum appeared to have moved to the right lumbar region, accompanied by vascular detour, thickening, and contrast concentration (Figure 2B). The superselective arteriography and embolization were repeated (Figure 2C). Two days after the second embolization, a contrast-enhanced CT scan revealed an annular irregularly enhancing mass (measuring $5.4 \text{ cm} \times 3.7 \text{ cm} \times 5.5 \text{ cm}$) with a large central area of liquefied necrosis (density of 38–47 HU), which was then located in the right lumbar region (Figure 2D).

FINAL DIAGNOSIS

Histopathological examination confirmed the presence of submucosal GIST measuring $5.2 \text{ cm} \times 3.6 \text{ cm} \times 3.4 \text{ cm}$ in size with infarction. It was of an intermediate-risk, with mitotic count < 1 per 10 high-power field, spindle unit type, and with an intact coating. Immunohistochemical (IHC) studies revealed the following: CD117+, Dog1+, CD34+, SMA+, S100-, CK-, Des-, SOX-11-, STAT6-, Ki67 Hotspots 10%+. These results indicated that the tumor originated from the jejunal stroma of GIST (Figure 3) and were consistent with the results of the CT examination. The patient was ultimately diagnosed with wandering small intestinal stromal tumor (clinical staging: T3NOMO).

TREATMENT

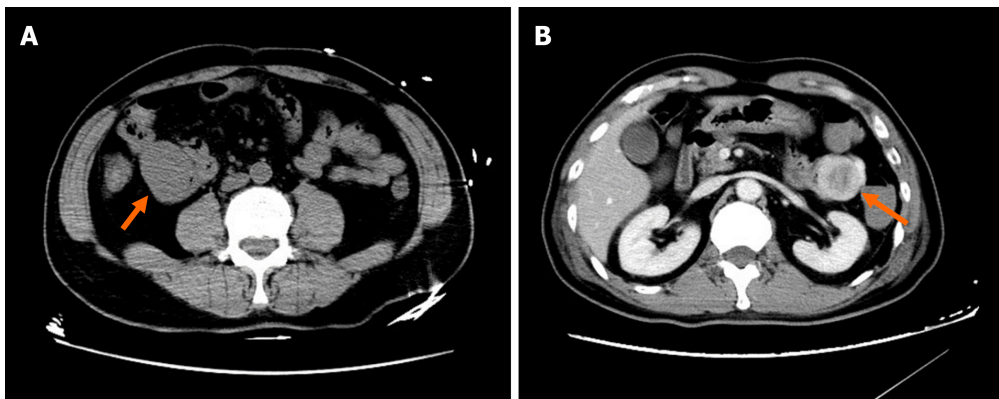
Two weeks later, tumor excision was performed when the patient's physical condition improved with small bowel resection. Laparoscopically, a 1-cm incision was made layer by layer into the abdomen at the lower edge of the navel. On exploration, the entire abdominal intestine was widely congested and edematous; the intestinal lumen was filled with a large amount of serous bloody fluid; and the local intestinal tube was adherent to the surrounding abdominal wall. Moreover, the tumor had been adherent to the intestinal wall with a longer mesentery. The mass was located approximately 30 cm distal to the ligament of Treitz. We excised the tumor; end-to-end anastomosis of the small intestine was achieved with a straight closed device, and abdominal closure was performed layer by layer.

OUTCOME AND FOLLOW-UP

The patient recovered well after surgery. Imatinib (400 mg daily) was prescribed postoperatively and the patient was followed up. The current basic situation is good.

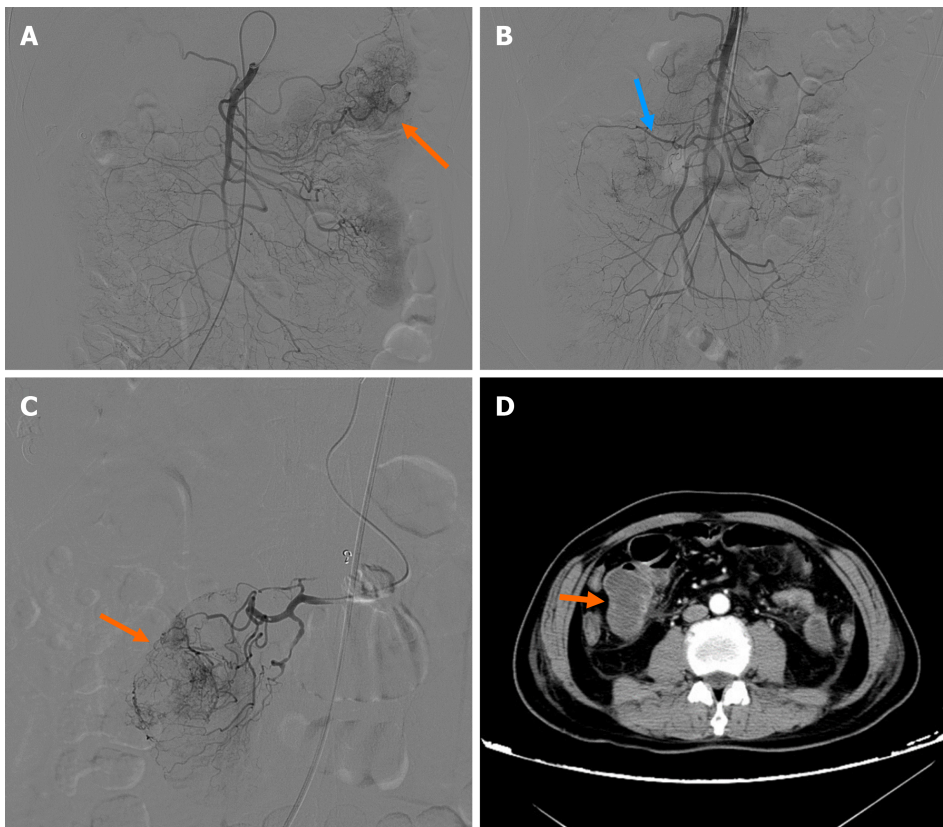
DISCUSSION

GISTs are the most common malignant subepithelial lesions of the GI tract [4]. The stomach and small intestine are the most common locations. Small intestinal stromal tumors account for approximately 20%–30% of the incidence of GISTs [5]. GISTs are different from neurogenic tumors and leiomyomas in initial presentation, biological behavior, and immunophenotype [6]. However, IHC is conclusive in



DOI: 10.12998/wjcc.v10.i29.10622 Copyright ©The Author(s) 2022.

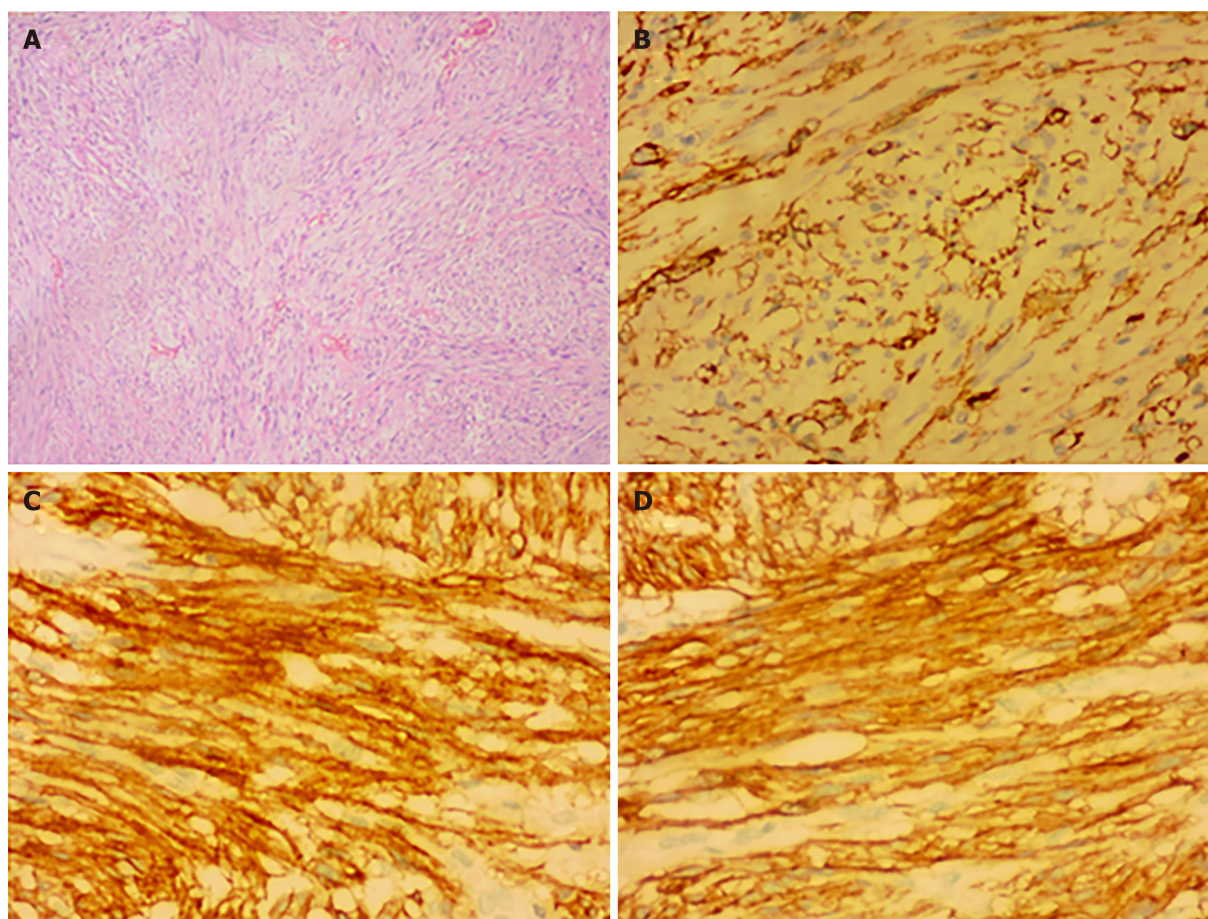
Figure 1 Computed tomography imaging. A: A 68-year-old man with a wandering small intestinal stromal tumor. At the initial visit, non-contrast computed tomography (CT) scan shows a 4.1 cm × 3.3 cm × 5.0 cm mass located below the right kidney in the right upper abdomen and anterior border of the major lumbar muscle, and the lesion is not clearly demarcated from the small intestine; B: Two days later, contrast-enhanced CT shows the mass (4.6 cm × 3.4 cm × 5.0 cm) in the upper left abdomen in front of the left kidney with non-homogenous enhancement and a thickened artery visible at the edge of the mass. The mass on right upper abdomen cannot be visualized.



DOI: 10.12998/wjcc.v10.i29.10622 Copyright ©The Author(s) 2022.

Figure 2 Digital subtraction angiography imaging. A: First digital subtraction angiography (DSA) showing the mass located in the left abdomen. The distal vascular branches of the first branch of the jejunum appear to be abundant and haphazard with contrast media exudation and retention in the intestinal lumen; B: Second DSA shows the first and second branches of the jejunum in the right abdomen; C: Supraselective arteriography showing tumor staining; D: Contrast-enhanced computed tomography after the second embolization showing the mass in the right mid-abdomen.

determining the histology of the tumor, based on proto-oncogene c-kit (CD117) and CD34 positivity to diagnose GISTs. GISTs measuring > 5 cm in diameter are at a risk of rupture, and most of the GISTs that originate in the small intestine measure > 5 cm in diameter at the time of diagnosis[7]. The most common symptom is gastrointestinal bleeding, which can be life-threatening and requires urgent intervention, such as surgery or catheter embolism[8]. In recent years many studies have reported that GISTs commonly co-exist with other primary tumors, which can involve either the GI tract or other extra-GI sites. It is not yet clear if a causal association exists for the concomitant occurrence of GISTs



DOI: 10.12998/wjcc.v10.i29.10622 Copyright ©The Author(s) 2022.

Figure 3 Histopathological and immunohistochemical. A: Histopathological examination of the resected specimen (hematoxylin and eosin; $\times 40$) showing submucosal stromal tumor with intact capsule, infarction, spindle shaped cells, and nuclear division less than 1/10 hibernation promoting factor. Immunohistochemical test results revealed the following ($\times 200$); B: CD34+; C: CD117+; D: Dog1+.

with other malignancies, or if this is merely coincidence[9].

Tumors measuring larger than 2 cm should be removed because of the increased risk of malignancy. Recurrence, tumor size, mitosis count, site of origin, and tumor rupture are the risk factors for GISTs [10]. Our patient had intermediate-risk of recurrence; therefore, we administered imatinib therapy 1 mo after the surgery. Careful follow-up of our patient is needed due to the risk of recurrence. Although wandering small intestinal stromal tumors are extremely rare, several reports on wandering intestinal tumors[11], mesenteric tumors, uterine fissures, and migraine mesothelioma are currently available in the literature. A wandering mass is usually related to the presence of a wandering spleen, owing to the laxity of its normal ligamentous attachments[12,13]. Similarly, the mesentery of the small intestine is relatively long, which permits mobility to a certain extent. Some of the factors that induce or contribute to a change in the position of the intestinal lumen include distention due to food, gastrointestinal peristalsis, or position changes. Any mass in the lumen is affected by gravity. However, such a spectacular change in location as in our patient, is extremely rare and may suggest a bowel origin. CT examination can accurately show the location, size, growth patterns, presence of necrosis, contrast enhancement, neoplastic angiogenesis, and potential metastasis[14]. Small GISTs (< 5 cm) appear as homogeneous lesions with persistent enhancement in contrast CT. Large tumors (> 5 cm) typically appear heterogeneous, contrast enhanced, and associated with cystic changes, necrosis, and ulceration [15]. Surgical treatment is preferred in the absence of metastasis[16]. DSA has important value in the detection of hemostasis for acute small intestinal bleeding (to distinguish a tumor or vascular origin) [17]. In this case, the tumor traveled widely, accompanied by its vascular pedicle derived from the superior mesenteric artery branch. Patients with these lesions typically present with internal hernia, torsion, and/or acute abdominal pain[18]. However, our patient had no symptoms of obstruction or torsion; similar cases have not been reported in the literature.

CONCLUSION

In patients with acute or chronic intestinal hemorrhage whose diagnoses are ambiguous, we should consider the possibility of GISTs. CT is a valuable tool to visualize these contrast-enhancing lesions. The wide variations in the embryonic development of the small intestine and its mesentery must be taken into account in anticipating tumor behavior arising from that location. When the tumor cannot be visualized at its original location, we should consider the possibility of tumor migration.

ACKNOWLEDGEMENTS

We thank the patient and his family for giving permission for his inclusion in this study. Thank my family for their support.

FOOTNOTES

Author contributions: Su JZ and Fan SF were involved in data collection and interpretation; Song X and Fan SF drafted the manuscript; Cao LJ and Su DY contributed in the revision.

Informed consent statement: Informed written consent was obtained from the patient for publication of this report and any accompanying images.

Conflict-of-interest statement: The authors declare that they have no conflict of interest to disclose.

CARE Checklist (2016) statement: The authors have read the CARE Checklist (2016), and the manuscript was prepared and revised according to the CARE Checklist (2016).

Open-Access: This article is an open-access article that was selected by an in-house editor and fully peer-reviewed by external reviewers. It is distributed in accordance with the Creative Commons Attribution NonCommercial (CC BY-NC 4.0) license, which permits others to distribute, remix, adapt, build upon this work non-commercially, and license their derivative works on different terms, provided the original work is properly cited and the use is non-commercial. See: <https://creativecommons.org/licenses/by-nc/4.0/>

Country/Territory of origin: China

ORCID number: Jin-Zhan Su 0000-0001-5751-0288; Xia Song 0000-0003-3624-507X; Dong-Ying Su 0000-0003-0962-6547.

S-Editor: Xing YX

L-Editor: A

P-Editor: Xing YX

REFERENCES

- 1 **Hirota S**, Isozaki K, Moriyama Y, Hashimoto K, Nishida T, Ishiguro S, Kawano K, Hanada M, Kurata A, Takeda M, Muhammad Tunio G, Matsuzawa Y, Kanakura Y, Shinomura Y, Kitamura Y. Gain-of-function mutations of c-kit in human gastrointestinal stromal tumors. *Science* 1998; **279**: 577-580 [PMID: 9438854 DOI: 10.1126/science.279.5350.577]
- 2 **Rubin BP**, Blanke CD, Demetri GD, Dematteo RP, Fletcher CD, Goldblum JR, Lasota J, Lazar A, Maki RG, Miettinen M, Noffsinger A, Washington MK, Krausz T; Cancer Committee, College of American Pathologists. Protocol for the examination of specimens from patients with gastrointestinal stromal tumor. *Arch Pathol Lab Med* 2010; **134**: 165-170 [PMID: 20121601 DOI: 10.5858/134.2.165]
- 3 **Casali PG**, Le Cesne A, Velasco AP, Kotasek D, Rutkowski P, Hohenberger P, Fumagalli E, Judson IR, Italiano A, Gelderblom H, Penel N, Hartmann JT, Duffaud F, Goldstein D, Martin-Broto J, Gronchi A, Wardelmann E, Marréaud S, Zalcberg JR, Litière S, Blay JY. Final analysis of the randomized trial on imatinib as an adjuvant in localized gastrointestinal stromal tumors (GIST) from the EORTC Soft Tissue and Bone Sarcoma Group (STBSG), the Australasian Gastro-Intestinal Trials Group (AGITG), UNICANCER, French Sarcoma Group (FSG), Italian Sarcoma Group (ISG), and Spanish Group for Research on Sarcomas (GEIS). *Ann Oncol* 2021; **32**: 533-541 [PMID: 33482247 DOI: 10.1016/j.annonc.2021.01.004]
- 4 **Miettinen M**, Lasota J. Gastrointestinal stromal tumors: review on morphology, molecular pathology, prognosis, and differential diagnosis. *Arch Pathol Lab Med* 2006; **130**: 1466-1478 [PMID: 17090188 DOI: 10.5858/2006-130-1466-GSTROM]
- 5 **Cameron S**, Beham A, Schildhaus HU. Current standard and future perspectives in the treatment of gastrointestinal stromal tumors. *Digestion* 2017; **95**: 262-268 [PMID: 28384644 DOI: 10.1159/000455835]
- 6 **Manxhuka-Kerliu S**, Sahatciu-Meka V, Kerliu I, Juniku-Shkololli A, Kerliu L, Kastrati M, Kotorri V. Small intestinal gastrointestinal stromal tumor in a young adult woman: a case report and review of the literature. *J Med Case Rep* 2014; **8**:

- 321 [PMID: [25264210](#) DOI: [10.1186/1752-1947-8-321](#)]
- 7 **Miettinen M**, Makhoul H, Sobin LH, Lasota J. Gastrointestinal stromal tumors of the jejunum and ileum: a clinicopathologic, immunohistochemical, and molecular genetic study of 906 cases before imatinib with long-term follow-up. *Am J Surg Pathol* 2006; **30**: 477-489 [PMID: [16625094](#) DOI: [10.1097/00000478-200604000-00008](#)]
- 8 **Tada Y**, Yamamoto M, Sawata S, Hara K, Sugisawa K, Ueshima C, Tanio A, Kihara K, Matsunaga T, Tokuyasu N, Takano S, Sakamoto T, Honjo S, Hasegawa T, Fujiwara Y. Ruptured Small Intestinal Stromal Tumor Causing Concurrent Gastrointestinal and Intra-Abdominal Hemorrhage: A Case Report. *Yonago Acta Med* 2021; **64**: 137-142 [PMID: [33642915](#) DOI: [10.33160/yam.2021.02.019](#)]
- 9 **Diamantis A**, Samara AA, Symeonidis D, Baloyiannis I, Vasdeki D, Tolia M, Volakakis G, Mavrovounis G, Tepetes K. Gastrointestinal stromal tumors (GISTs) and synchronous intra-abdominal malignancies: case series of a single institution's experience. *Oncotarget* 2020; **11**: 4813-4821. [PMID: [33447349](#) DOI: [10.18632/oncotarget.27853](#)]
- 10 **Joensuu H**, Vehtari A, Riihimäki J, Nishida T, Steigen SE, Brabec P, Plank L, Nilsson B, Cirilli C, Braconi C, Bordoni A, Magnusson MK, Linke Z, Sufliarsky J, Federico M, Jonasson JG, Dei Tos AP, Rutkowski P. Risk of recurrence of gastrointestinal stromal tumour after surgery: an analysis of pooled population-based cohorts. *Lancet Oncol* 2012; **13**: 265-274 [PMID: [22153892](#) DOI: [10.1016/S1470-2045\(11\)70299-6](#)]
- 11 **Qureshi SS**, Rekhi B, Kembhavi S. Wandering Pelvic Mass: Rhabdomyosarcoma of the Meckel Diverticulum. *J Pediatr* 2017; **185**: 249-249.e1 [PMID: [28284478](#) DOI: [10.1016/j.jpeds.2017.02.030](#)]
- 12 **Ganarin A**, Fascetti Leon F, La Pergola E, Gamba P. Surgical Approach of Wandering Spleen in Infants and Children: A Systematic Review. *J Laparoendosc Adv Surg Tech A* 2021; **31**: 468-477 [PMID: [33428514](#) DOI: [10.1089/lap.2020.0759](#)]
- 13 **Matsuyama T**, Nakao T, Harada S, Nakamura T, Nobori S, Ushigome H. A Case of Small Intestinal Ileus Due to Wandering Spleen with a Large Cyst. *Am J Case Rep* 2019; **20**: 1138-1140 [PMID: [31371695](#) DOI: [10.12659/AJCR.916845](#)]
- 14 **Wen XL**, Wang L, Song XQ, Zhang Z, Zhu XF, Wu SP. Clinical value of multi-slice spiral enhanced CT in diagnosing mild digestive tract hemorrhage. *Zhongguo Yi Xue Ke Xue Yuan Xue Bao* 2018; **40**: 139-145 [PMID: [29724301](#) DOI: [10.3881/j.issn.1000-503X.2018.02.001](#)]
- 15 **De Cobelli F**, Palumbo D, Albarello L, Rosati R, Giganti F. Esophagus and Stomach: Is There a Role for MR imaging? *Magn Reson Imaging Clin N Am* 2020; **28**: 1-15 [PMID: [31753229](#) DOI: [10.1016/j.mric.2019.08.001](#)]
- 16 **Li J**, Ye Y, Wang J, Zhang B, Qin S, Shi Y, He Y, Liang X, Liu X, Zhou Y, Wu X, Zhang X, Wang M, Gao Z, Lin T, Cao H, Shen L; Chinese Society Of Clinical Oncology CSCO Expert Committee On Gastrointestinal Stromal Tumor. Chinese consensus guidelines for diagnosis and management of gastrointestinal stromal tumor. *Chin J Cancer Res* 2017; **29**: 281-293 [PMID: [28947860](#) DOI: [10.21147/j.issn.1000-9604.2017.04.01](#)]
- 17 **Gerson LB**, Fidler JL, Cave DR, Leighton JA. ACG clinical guideline: diagnosis and management of small bowel bleeding. *Am J Gastroenterol* 2015; **110**: 1265-1287 [PMID: [26303132](#) DOI: [10.1038/ajg.2015.246](#)]
- 18 **Viana C**, Cristino H, Veiga C, Leão P. Splenic torsion, a challenging diagnosis: Case report and review of literature. *Int J Surg Case Rep* 2018; **44**: 212-216 [PMID: [29529542](#) DOI: [10.1016/j.ijscr.2018.02.032](#)]



Published by **Baishideng Publishing Group Inc**
7041 Koll Center Parkway, Suite 160, Pleasanton, CA 94566, USA

Telephone: +1-925-3991568

E-mail: bpgoffice@wjgnet.com

Help Desk: <https://www.f6publishing.com/helpdesk>

<https://www.wjgnet.com>

