

August 19, 2022

Dear Editors and Reviewers:

Thank you for your letter and for your comments concerning our manuscript entitled “Risk factor analysis and clinical decision tree model construction for diabetic retinopathy in Western China (Manuscript ID 78140)”. Those comments are all valuable and very helpful for revising and improving our paper. We have studied comments carefully and made a correction which we hope to meet with approval. We have re-uploaded the revised manuscript in “**Supplementary Material**”, the **purple marked part** of the manuscript is the revised content, and the revision has been annotated

**The main response to the editor and reviewer’s comments are as follows:**

## **1. To reviewers**

### **1.1 To reviewers 1# (ID: 05247977)**

Comments: In exclusion criteria there mentioned positive islets autoantibodies only, type 1 diabetes caused by many types of antibodies.

Response:

Dear professor, I greatly appreciate your comments that make our article more rigorous and logical. Based on your suggestion, we have revised relevant sections of the manuscript to refine the autoantibodies associated with type 1 diabetes, see lines [124-127](#) in hidden revision mode state.

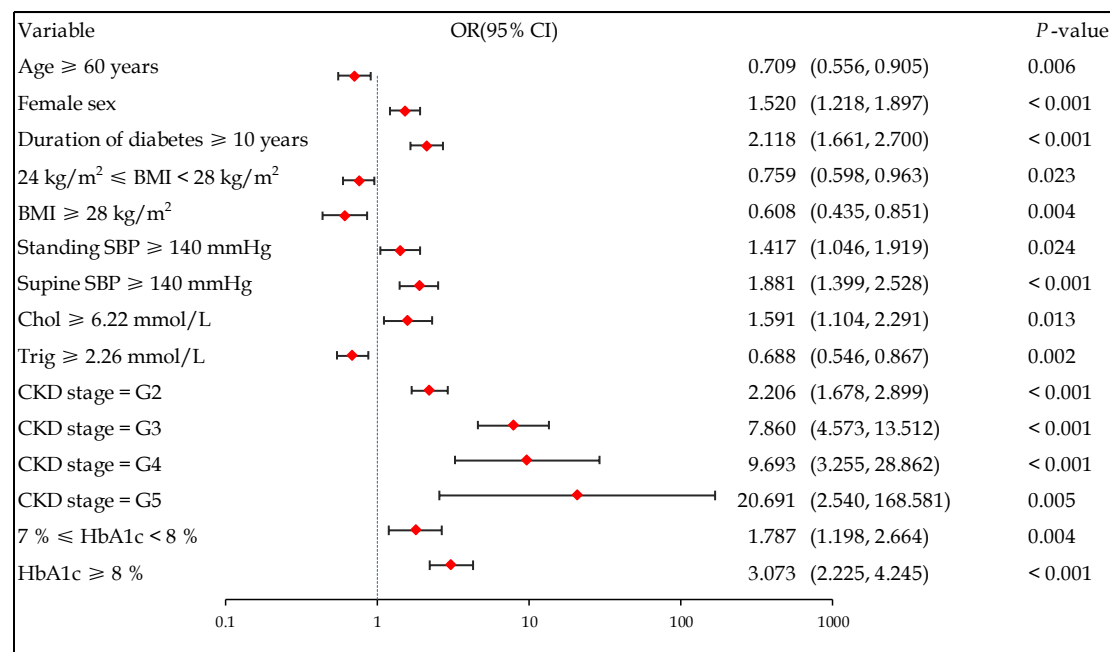
### **1.2 To reviewer 2# (ID: 05449413)**

Comments: It will be good if author(s) represent data either in table or figures along with statistics.

Response:

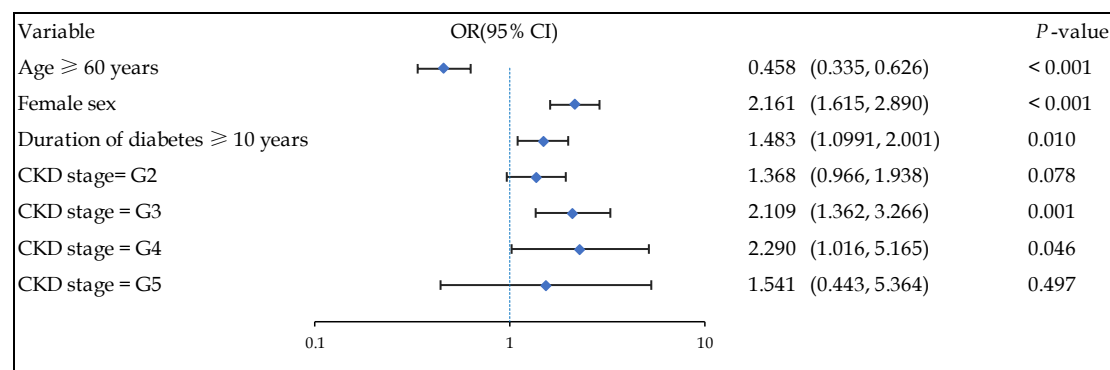
Dear professor, thanks you for your valuable comments. in order to make the logistic regression statistical results of this article more vivid and intuitive, we present the content of “Table 4” and “Table 5” in the original text in the form of “Figuers”, namely the new “Figure 1” and “Figure 2”. Correspondingly, other parts involved in the text have also been revised. See lines [312,331,351,368,396,419,453,465](#) in hidden revision mode state.

The new “Figure 1” and “Figure 2” are as follows



**Figure 1. Logistic regression analysis of risk factors associated with DR in patients with T2DM**

Female sex, duration of diabetes  $\geq$  10 years, standing SBP  $\geq$  140 mmHg, supine SBP  $\geq$  140 mmHg, Chol  $\geq$  6.22 mmol/L, greater severity of CKD, and worse control of HbA1c were associated with a higher risk of DR (the values were in logarithmic scale, base 10). DR: diabetic retinopathy; OR: odds ratio; CI: confidence interval; BMI: body mass index; SBP: systolic blood pressure; Chol: cholesterol; Trig: triglyceride; CKD: chronic kidney disease; HbA1c: glycated hemoglobin A1c.



**Figure 2. Logistic regression analysis of associated risk factors of PDR in patients with T2DM**

Female sex, duration of diabetes  $\geq$  10 years, and CKD stage G3 or G4 were risk factors for NPDR patients to progress to PDR (the values were in logarithmic scale, base 10). PDR: proliferative diabetic retinopathy; NPDR: non-proliferative diabetic retinopathy; OR: odds ratio; CI: confidence interval; CKD: chronic kidney disease.

## 2. To editor:

Firstly, I would like to express my sincere thanks to your journal for considering publishing our manuscript (Manuscript ID 78140)"and giving constructive comments. Based on the reviewers' comments, we have made corresponding revisions and adjusted some details, as follows:

- We have adjusted the rank order of authors based on their contribution.
- We have changed the order of hospital names, because "The Second People's Hospital of Yunnan Province" has now been officially awarded the "Affiliated Hospital of Yunnan University"(Yunnan University is the only national “double first-class” university in Yunnan Province).
- We have revised the section of “Funding”, because 2 projects have been finished.
- Sorry for our negligence (typo), after careful inspection, the " $\leq$ " has now been changed to "<", see line 31 in hidden revision mode state. The same error occurred at line 528 in the article, which has now been corrected
- In view of the fact that "The Second People's Hospital of Yunnan Province" has been officially awarded the "Affiliated Hospital of Yunnan University", all previous ethics should be adjusted accordingly at the request of Yunnan University,

so the ethics involved in this article have been adjusted accordingly. Therefore, the previous ethics number and the name of the ethics committee have been adjusted. At the same time, we also uploaded a new version of the ethics certificate in the revision system, see lines 135-136 in hidden revision mode state.

- f) Sorry for our negligence (typo), after careful inspection, the "standing" has now been changed to "<sup>supine</sup>", see line 220.
- g) Based on the order in which the tables appear in the manuscript, we have made corresponding adjustments. See lines 196-197, 208 in hidden revision mode state.
- h) In order to be more precise and specific, we add the corresponding description according to Figure 1, see lines 253-256 in hidden revision mode state.
- i) We have made corresponding adjustments for “Reference” according to the "Edit Reference by Auto-Analyser " in the manuscript revision system.

Once again, I would like to express my gratitude to the editors and reviewers for your hard work in reviewing our manuscript.

Yours sincerely

Yuan-Yuan Zhou, 943157026@qq.com

Ying Yang, yangying2072@126.com