

World Journal of *Gastrointestinal Endoscopy*

World J Gastrointest Endosc 2022 October 16; 14(10): 581-656



REVIEW

- 581** Endoscopic palliation of malignant biliary obstruction
Canakis A, Kahaleh M

ORIGINAL ARTICLE

Retrospective Study

- 597** Gastric intestinal metaplasia development in African American predominant United States population
Ahmad AI, Lee A, Caplan C, Wikholm C, Pothoulakis I, Almothafer Z, Raval N, Marshall S, Mishra A, Hodgins N, Kang IG, Chang RK, Dailey Z, Daneshmand A, Kapadia A, Oh JH, Rodriguez B, Sehgal A, Sweeney M, Swisher CB, Childers DF, O'Connor C, Sequeira LM, Cho W

SYSTEMATIC REVIEWS

- 608** Water-jet vs traditional triangular tip knife in peroral endoscopic myotomy for esophageal dysmotility: A systemic review and meta-analysis
Belopolsky Y, Puli SR
- 616** Laparoscopic Janeway gastrostomy as preferred enteral access in specific patient populations: A systematic review and case series
Murray-Ramcharan M, Fonseca Mora MC, Gattorno F, Andrade J

CASE REPORT

- 628** Tracheoesophageal fistulas in coronavirus disease 2019 pandemic: A case report
Gomez Zuleta MA, Gallego Ospina DM, Ruiz OF
- 636** Hemostasis of massive bleeding from esophageal tumor: A case report
Kashintsev AA, Rusanov DS, Antipova MV, Anisimov SV, Granstrem OK, Kokhanenko NY, Medvedev KV, Kutumov EB, Nadeeva AA, Proutski V
- 642** Cronkhite-Canada syndrome: First case report from Egypt and North Africa
Alzamzamy AE, Aboubakr A, Okasha HH, Abdellatef A, Elkholy S, Wahba M, Alboraie M, Elsayed H, Othman MO
- 648** Gastrointestinal histoplasmosis complicating pediatric Crohn disease: A case report and review of literature
Miller CQ, Saeed OAM, Collins K

ABOUT COVER

Editorial Board Member of *World Journal of Gastrointestinal Endoscopy*, Mahesh Kumar Goenka, MD, DM, Director, Institute of Gastrosiences, Apollo Multispeciality Hospitals, Kolkata, 58 Canal Circular Road, Kolkata 700054, India. mkgkolkata@gmail.com

AIMS AND SCOPE

The primary aim of *World Journal of Gastrointestinal Endoscopy* (WJGE, *World J Gastrointest Endosc*) is to provide scholars and readers from various fields of gastrointestinal endoscopy with a platform to publish high-quality basic and clinical research articles and communicate their research findings online.

WJGE mainly publishes articles reporting research results and findings obtained in the field of gastrointestinal endoscopy and covering a wide range of topics including capsule endoscopy, colonoscopy, double-balloon enteroscopy, duodenoscopy, endoscopic retrograde cholangiopancreatography, endosonography, esophagoscopy, gastrointestinal endoscopy, gastroscopy, laparoscopy, natural orifice endoscopic surgery, proctoscopy, and sigmoidoscopy.

INDEXING/ABSTRACTING

The WJGE is now abstracted and indexed in Emerging Sources Citation Index (Web of Science), PubMed, PubMed Central, Reference Citation Analysis, China National Knowledge Infrastructure, China Science and Technology Journal Database, and Superstar Journals Database. The 2022 edition of Journal Citation Reports® cites the 2021 Journal Citation Indicator (JCI) for WJGE as 0.33.

RESPONSIBLE EDITORS FOR THIS ISSUE

Production Editor: Yi-Xuan Cai; Production Department Director: Xu Guo; Editorial Office Director: Jia-Ping Yan.

NAME OF JOURNAL

World Journal of Gastrointestinal Endoscopy

ISSN

ISSN 1948-5190 (online)

LAUNCH DATE

October 15, 2009

FREQUENCY

Monthly

EDITORS-IN-CHIEF

Anastasios Koulaouzidis, Bing Hu, Sang Chul Lee, Joo Young Cho

EDITORIAL BOARD MEMBERS

<https://www.wjgnet.com/1948-5190/editorialboard.htm>

PUBLICATION DATE

October 16, 2022

COPYRIGHT

© 2022 Baishideng Publishing Group Inc

INSTRUCTIONS TO AUTHORS

<https://www.wjgnet.com/bpg/gerinfo/204>

GUIDELINES FOR ETHICS DOCUMENTS

<https://www.wjgnet.com/bpg/GerInfo/287>

GUIDELINES FOR NON-NATIVE SPEAKERS OF ENGLISH

<https://www.wjgnet.com/bpg/gerinfo/240>

PUBLICATION ETHICS

<https://www.wjgnet.com/bpg/GerInfo/288>

PUBLICATION MISCONDUCT

<https://www.wjgnet.com/bpg/gerinfo/208>

ARTICLE PROCESSING CHARGE

<https://www.wjgnet.com/bpg/gerinfo/242>

STEPS FOR SUBMITTING MANUSCRIPTS

<https://www.wjgnet.com/bpg/GerInfo/239>

ONLINE SUBMISSION

<https://www.f6publishing.com>



Gastrointestinal histoplasmosis complicating pediatric Crohn disease: A case report and review of literature

C Quinn Miller, Omer A M Saeed, Katrina Collins

Specialty type: Gastroenterology and hepatology

Provenance and peer review: Unsolicited article; Externally peer reviewed.

Peer-review model: Single blind

Peer-review report's scientific quality classification

Grade A (Excellent): 0
Grade B (Very good): B
Grade C (Good): C
Grade D (Fair): 0
Grade E (Poor): 0

P-Reviewer: Bao CH, China; Sitkin S, Russia

Received: July 17, 2022

Peer-review started: July 17, 2022

First decision: September 5, 2022

Revised: September 5, 2022

Accepted: September 21, 2022

Article in press: September 21, 2022

Published online: October 16, 2022



C Quinn Miller, Omer A M Saeed, Katrina Collins, Department of Pathology, Indiana University School of Medicine, Indianapolis, IN 46202, United States

Corresponding author: Katrina Collins, MD, Assistant Professor, Department of Pathology, Indiana University School of Medicine, 350 W 11th Street, Indianapolis, IN 46202, United States. katcoll@iu.edu

Abstract

BACKGROUND

Infection with *Histoplasma capsulatum* (*H. capsulatum*) can lead to disseminated disease involving the gastrointestinal tract presenting as diffuse abdominal pain and diarrhea which may mimic inflammatory bowel disease (IBD).

CASE SUMMARY

We report a case of 12-year-old boy with presumptive diagnosis of Crohn disease (CD) that presented with several months of abdominal pain, weight loss and bloody diarrhea. Colonoscopy showed patchy moderate inflammation characterized by erythema and numerous pseudopolyps involving the terminal ileum, cecum, and ascending colon. Histologic sections from the colon biopsy revealed diffuse cellular infiltrate within the lamina propria with scattered histiocytic aggregates, and occasional non-necrotizing granulomas. Grocott-Gomori's Methenamine Silver staining confirmed the presence of numerous yeast forms suggestive of *Histoplasma* spp., further confirmed with positive urine *Histoplasma* antigen (6.58 ng/mL, range 0.2-20 ng/mL) and serum immunoglobulin G antibodies to *Histoplasma* (35.9 EU, range 10.0-80.0 EU). Intravenous amphotericin was administered then transitioned to oral itraconazole. Follow-up computed tomography imaging showed a left lower lung nodule and mesenteric lymphadenopathy consistent with disseminated histoplasmosis infection.

CONCLUSION

Gastrointestinal involvement with *H. capsulatum* with no accompanying respiratory symptoms is exceedingly rare and recognition is often delayed due to the overlapping clinical manifestations of IBD. This case illustrates the importance of excluding infectious etiologies in patients with "biopsy-proven" CD prior to initiating immunosuppressive therapies. Communication between clinicians and pathologists is crucial as blood cultures and antigen testing are key studies that should be performed in all suspected cases of histoplasmosis to avoid misdiagnosis and inappropriate treatment.

Key Words: Crohn disease; Disseminated histoplasmosis; Endoscopy; Colon; Inflammatory bowel disease; Immunosuppression; Case report

©The Author(s) 2022. Published by Baishideng Publishing Group Inc. All rights reserved.

Core Tip: Impaired cell-mediated immunity is known to increase the risk for disseminated histoplasmosis and has been described in the setting of Crohn disease (CD) treated with immunosuppressant agents. Endoscopically, the appearance of histoplasmosis varies and includes features of inflammatory mucosal changes. Increasing awareness of this condition is critical to avoid misdiagnosis and inappropriate treatment, particularly in the setting of underlying CD. While no specific recommendations are available, immunosuppressive therapy may be safely initiated in some cases when there appears to be effective response to antifungal therapy and the patient can be monitored closely.

Citation: Miller CQ, Saeed OAM, Collins K. Gastrointestinal histoplasmosis complicating pediatric Crohn disease: A case report and review of literature. *World J Gastrointest Endosc* 2022; 14(10): 648-656

URL: <https://www.wjgnet.com/1948-5190/full/v14/i10/648.htm>

DOI: <https://dx.doi.org/10.4253/wjge.v14.i10.648>

INTRODUCTION

Histoplasmosis is an infection caused by inhalation of spores from the fungus *Histoplasma capsulatum* (*H. capsulatum*), found in soil enriched with bird and bat droppings and is endemic to the central and eastern states, prevalent in the Ohio and Mississippi River Valleys[1,2]. Clinical manifestations are typically self-limiting in immunocompetent children, whereas immunocompromised children are likely to present with more severe or disseminated disease and may be indistinguishable from malignancy or tuberculosis[3,4]. Single-organ histoplasmosis is rare, primarily affecting the lungs, occasionally lymph nodes, liver, bone marrow, skin and mucosal membranes[5-8]. While the literature contains many reports of disseminated histoplasmosis reminiscent of Crohn disease (CD) radiographically and endoscopically in immunocompromised patients, there are relatively few reports of symptomatic gastrointestinal histoplasmosis occurring in immunocompetent patients. The most commonly involved sites are the terminal ileum and the colon[9]. We report a case of an immunocompetent pediatric patient presenting with possible disseminated histoplasmosis after presumed initial diagnosis of CD. Early detection is critical to avoid treatment with immunosuppressive therapy and potential complications.

CASE PRESENTATION

Chief complaints

The patient is a 12-year-old boy who presented with several months of abdominal pain, weight loss, and bloody diarrhea.

History of present illness

The patient experienced abdominal pain, weight loss, and bloody diarrhea and was referred for upper and lower GI endoscopy with biopsy.

History of past illness

His medical history was remarkable for several mild and self-limiting respiratory illnesses with non-productive cough. The most recent episode occurred fourteen months prior to his current presentation.

Personal and family history

No notable personal or family medical history.

Physical examination

Unremarkable physical examination.

Laboratory examinations

Esophagogastroduodenoscopy was performed and revealed focally ulcerated gastric mucosa and several inflammatory polyps arising within the second and third portions of the duodenum.

Colonoscopy revealed patchy moderate inflammation characterized by erythema and numerous pseudopolyps involving the terminal ileum, cecum, and ascending colon (Figure 1). An erythematous region containing shallow ulcers was identified at the hepatic flexure. Multiple biopsies were taken from throughout the colon. A presumptive diagnosis of CD was made, methylprednisolone (40 mg/kg/d, IV) was administered and the patient was then discharged on oral prednisone (40 mg, QD) and oral mesalamine (1000 mg, TID).

Histologic examination of an H&E-stained colonic biopsy revealed a diffuse cellular infiltrate within the lamina propria with scattered histiocytic aggregates and occasional non-necrotizing granulomas (Figure 2A-C). Grocott-Gomori's methenamine silver (GMS) and Periodic acid-Schiff stains confirmed the presence of numerous yeast forms morphologically suggestive of *H. capsulatum* (Figure 2D and E), further confirmed with positive urine *Histoplasma* antigen (6.58 ng/mL, positive range 0.2-20 ng/mL) and serum immunoglobulin G (IgG) antibodies to *Histoplasma* (35.9 EU, positive ≥ 10.0 EU).

Given the unusual nature of the histoplasmosis infection, an immunological workup was initiated and revealed profound hypogammaglobulinemia: Serum IgG 94 mg/dL (range 638-1453), IgM 9 mg/dL (range 56-242), and IgA 40 mg/dL (range 45-285) as well as CD8 lymphopenia (253/mm³, range 331-1445). Genetic testing was ordered for inborn error of immunity using Invitae Primary Immunodeficiency Panel and one pathogenic variant was identified in CD40LG c.43del (pThr15Leufs*7), associated with X-linked hyper-IgM syndrome (XHIGM) and two likely pathogenic variants in TNFRSF13B c.310T>C (p.Cys104RG) (homozygous), associated with recessive common variable immunodeficiency (CVID).

Imaging examinations

Computed tomography (CT) of the chest, abdomen, and pelvis demonstrated a calcified left lower lobe lung nodule with associated hilar lymphadenopathy, diffuse colitis with wall thickening of the distal small bowel through the cecum, abdominal lymphadenopathy, and abnormal-appearing adrenal glands, likely related to disseminated histoplasmosis infection.

FINAL DIAGNOSIS

Combined with the patient's medical history, the final diagnosis was isolated gastrointestinal histoplasmosis complicating newly diagnosed, presumed CD.

TREATMENT

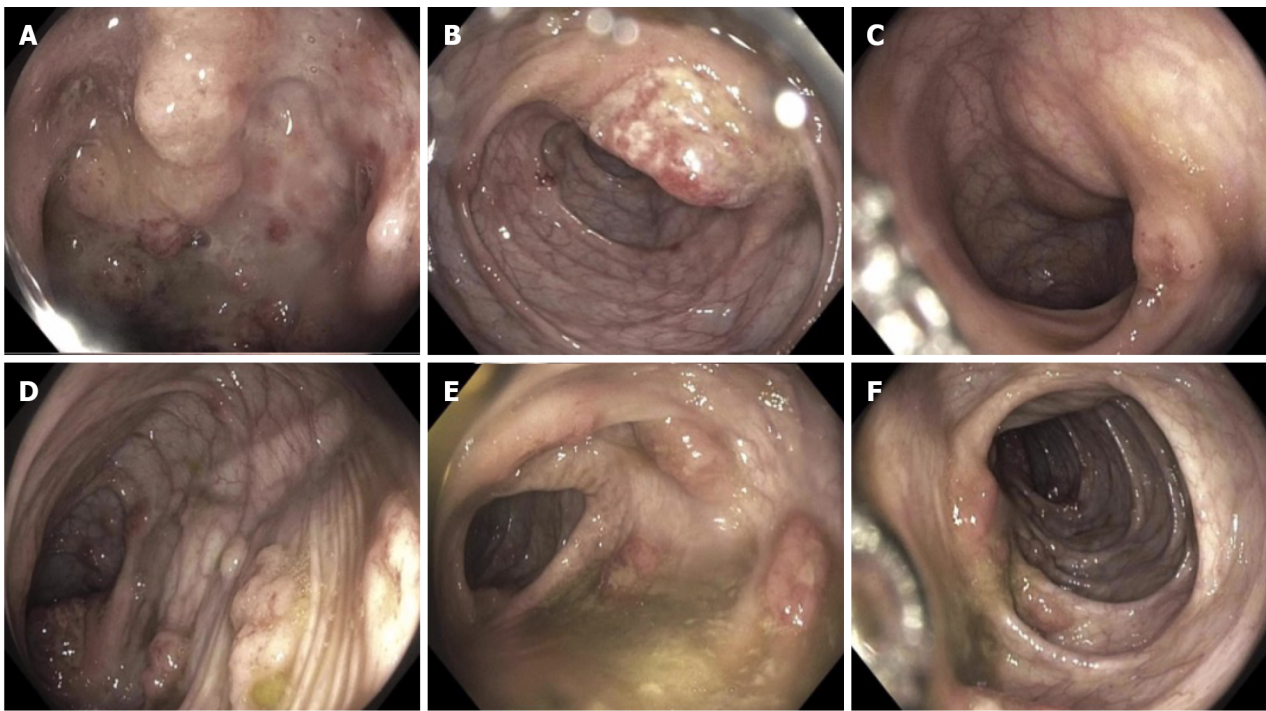
An induction regimen of liposomal amphotericin was administered (3 mg/kg/d, IV) followed by 1 year of oral itraconazole (200 mg, BID) and treatment with oral mesalamine (1000 mg, TID) to maintain endoscopic remission with plans for endoscopy and colonoscopy in the future after trailing off medication at 6 mo.

OUTCOME AND FOLLOW-UP

Ongoing follow-up is planned for diagnostic evaluation of CD and the treatment plan includes maintaining clinical improvement and *Histoplasma* antigen clearance. Decisions on whether to initiate treatment for CD are pending as duration of antifungal therapy and safety of immunosuppressive therapy are to be determined. To date, our patient has completed 5 mo of a 12-mo course of antifungal therapy and is maintained on mesalamine until follow-up endoscopy and colonoscopy. The patient's symptoms have largely resolved and remain stable after 5 mo of follow-up.

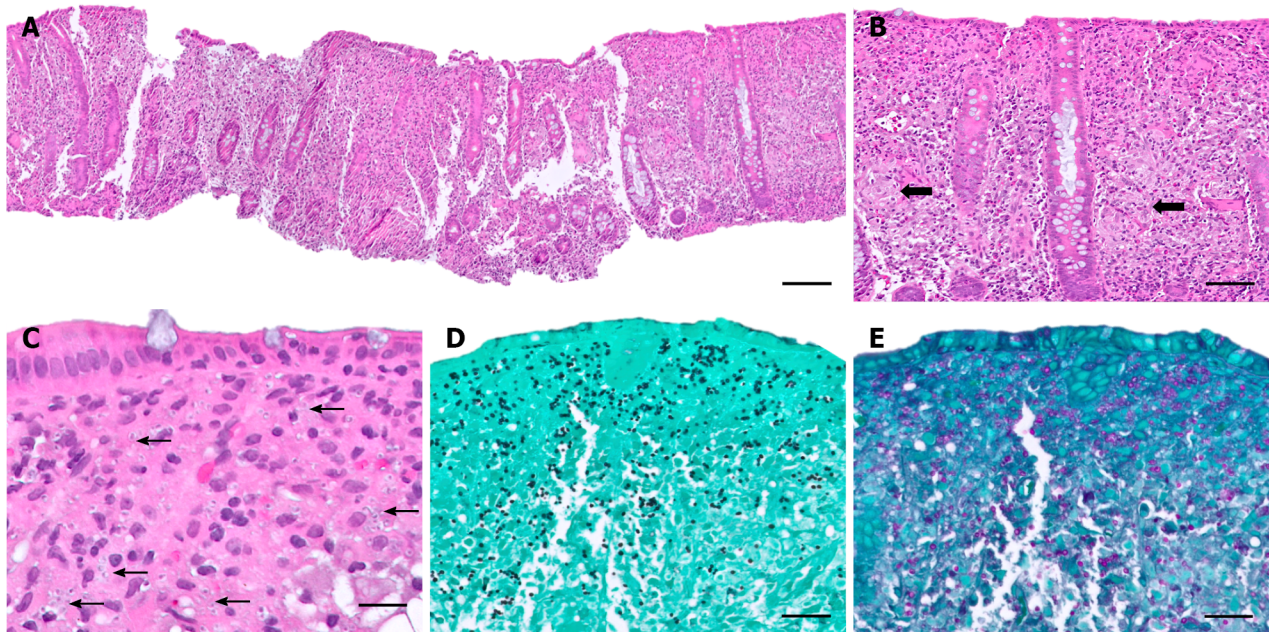
DISCUSSION

Gastrointestinal involvement commonly occurs as part of disseminated histoplasmosis; however isolated colonic involvement with lack of respiratory symptoms is rare[10]. Histoplasmosis can occur at any age. Nonspecific clinical manifestations of gastrointestinal involvement such as abdominal pain, fever, weight loss, and diarrhea are variably present and may only be mild[6,10,11]. Immunocompromised patients are at increased risk of developing disseminated disease and may experience complications such as bleeding or intestinal obstruction more readily than immunocompetent individuals. A high index of suspicion is required for diagnosing histoplasmosis and the gold standard for diagnosis includes isolation of the fungus in blood culture and antigen testing in suspected cases, as utilizing both serum and urine consistently provides the highest sensitivity for detection. Testing for



DOI: 10.4253/wjge.v14.i10.648 Copyright ©The Author(s) 2022.

Figure 1 Colonoscopy findings. Diffuse and severe inflammation characterized by mucosal edema, erythema, friability, pseudopolyps, and serpentine ulcerations. A: Terminal ileum; B: Ileocecal valve; C: Transverse colon; D and E: Descending colon; F: Ascending colon.



DOI: 10.4253/wjge.v14.i10.648 Copyright ©The Author(s) 2022.

Figure 2 Histologic findings. A: Colon biopsy revealed diffuse cellular infiltrate within the lamina propria (hematoxylin and eosin, $\times 2$, scale bar 1 mm); B: Scattered poorly formed granulomas (arrows) (hematoxylin and eosin, $\times 20$, scale bar 100 μm); C: Intracellular microorganisms (arrows) (hematoxylin and eosin, $\times 40$, scale bar 50 μm); Numerous yeast forms suggestive of *Histoplasma* spp. confirmed by special stains; D: Grocott-Gomori's Methenamine Silver stain ($\times 20$, scale bar 100 μm); E: Periodic acid Schiff stain ($\times 20$, scale bar 100 μm).

anti-*Histoplasma* antibodies further increases the sensitivity for diagnosis[12].

The terminal ileum is most commonly involved, presumably because of the lymphoid-rich tissue in this area, but can be found throughout the gastrointestinal tract[9]. The pathologic findings of gastrointestinal histoplasmosis include mucosal ulceration, polypoid lesions, and obstructing masses[6, 11, 13]. Histologically, tissue shows diffuse expansion of lamina propria and submucosa by macrophages containing intracellular yeast forms[6, 10]. As in our case, due to similarities in presentation, pattern of

Table 1 Reports of histoplasmosis mimicking inflammatory bowel disease in pediatric immunocompetent patients: Cases published between 1970–present (including current case)

Ref.	No. of cases	Age/Sex	Clinical presentation	Initial concern	Immune status	Laboratory investigations
Soper <i>et al</i> [23], 1970	2	15/M	Periumbilical pain with radiation to back; prior exposure to <i>Coccidioides</i> and <i>Histoplasma</i>	Presumed CD	Immunocompetent	<i>Histoplasma</i> antibody titers 1:1024
		13/M	Abd pain, bilious vomiting, weight loss, fever; prior exposure to <i>Histoplasma</i>	Presumed CD	Immunocompetent	Not performed
Alberti-Flor and Granda [18], 1986	1	16/M	Abd pain, diarrhea, weakness, fever; history of Job syndrome	Presumed CD	Hyper-IgE syndrome	Complement fixation 1:64; yeast antigen 1:8; precipitin (H/M bands), GMS+ yeast forms (resection specimen)
Steiner <i>et al</i> [19], 2009	1	14/F	Fatigue, abd pain, fever, weight loss	Presumed CD	Hyper-IgE syndrome	Urine <i>Histoplasma</i> antigen (8.34 ng/mL), <i>Histoplasma</i> complement fixation titers 1:32 (mycelial phase) 1:64 (yeast phase), precipitin (H/M bands), Yeast forms (terminal ileum, ileocecal valve)
Agarwal <i>et al</i> [20], 2015	1	7/F	Intermittent fever and chills, weight loss	Presumed CD	Immunocompetent	Yeast forms (peripheral blood), GMS/PAS+ yeast forms (bone marrow)
Kweyamba <i>et al</i> [21], 2016	1	4/M	Intermittent vague abd pain, anorexia, occasional vomiting and nausea; obstructing mesenteric chylous cyst	Intestinal obstruction	Immunocompetent	PAS+ yeast forms (cyst lining)
Acharyya <i>et al</i> [22], 2021	1	8/M	Colicky abd pain, weight loss, constipation, subsequent ileal stricture	Presumed intestinal tuberculosis, unresponsive to antitubercular medication × 9 mo	Immunocompetent	GMS+ yeast forms (ileum, mesenteric nodes)
Current case, 2022	1	12/M	Abdominal pain × several months, weight loss, bloody diarrhea	Presumed CD	Immunocompetent	GMS+ yeast forms (colon)

6-MP: 6-mercaptopurine; abd: Abdominal; CD: Crohn disease; GI: Gastrointestinal; IBD: Inflammatory bowel disease; NR: Not reported; UC: Ulcerative colitis.

involvement and associated granulomatous inflammation, gastrointestinal histoplasmosis can mimic CD[6,14–17].

To our knowledge, only 7 cases of isolated gastrointestinal histoplasmosis occurring in the pediatric age group (younger than 18 years of age) have been previously reported, mostly from individual case reports (Table 1)[18–22] and one small case series[23]. Ages ranged from 4 to 16 years with a median age of 13 years. Of the previously described cases, the male/female ratio was 5:2. Our patient presented at a slightly younger age than the median (12 years *vs* 13 years). The most common presenting symptoms included abdominal pain and weight loss, with diarrhea, anorexia, and fever appearing occasionally. Pulmonary symptoms at presentation or during the disease course were not reported in any case. Five patients were presumed immunocompetent[20–22], while two patients were known to have immunocompromising conditions (hyper-IgE syndrome) prior to their presentation[18,19]. One patient with hyper-IgE syndrome was effectively treated seven months prior for cough and fever of unknown origin [19]. As in our case, five patients were given a presumptive diagnosis of CD based on clinical presentation and endoscopic findings[20–23]. A broad range of diagnostic laboratory tests were performed including immunological tests for antigen and/or antibody detection. Microscopic examination revealed the presence of yeast forms (by routine hematoxylin and eosin staining and/or special staining methods) in all cases.

In our present case, the patient presented with gastrointestinal symptoms alone and endoscopic findings suggestive for CD and was started on corticosteroids and subsequently mesalamine. An interesting feature of our case is that while the gastrointestinal tract was the only site of symptomatic disease, it is unlikely to be the primary focus of infection. It is more likely that after inhalation of the fungus, dissemination by the bloodstream occurred before an immune response was mounted with some unidentifiable factor favoring persistence in the gastrointestinal tract exclusively. After additional workup, the patient was identified as more susceptible to histoplasmosis because of the dysregulation of cell-mediated immunity associated with his XHIGM and CVID, as suggested by his immunological

Table 2 Infectious mimics of inflammatory bowel disease¹

Infectious etiology	Gastrointestinal site	Routine stain	Ancillary stain(s)
Bacterial			
<i>E. coli</i> , O157-H7[24]	Colon	H&E stain	Gram stain
<i>Shigella</i> spp.[25]	Colon		
<i>Salmonella</i> spp.[26]	Colon, terminal ileum		
<i>Campylobacter</i> spp.[27]	Colon, terminal ileum		
<i>Yersinia enterocolitica</i> [28]	Colon, terminal ileum		
<i>Clostridioides difficile</i> [29]	Colon		
<i>Nisseria gonorrhoeae</i> [30]	Colorectal		
<i>Treponema pallidum</i> [31]	Colorectal		
<i>Chlamydia trachomatis</i> [32]	Colorectal		
<i>Aeromonas</i> spp.[33]	Colon		
<i>Mycobacterial tuberculosis</i> [34]	Gastrointestinal tract, mostly terminal ileum		Gram stain Acid-fast stain (Ziehl-Neelsen or Kinyoun)
Fungal			
<i>Cryptococcus</i> spp.[35]	Terminal ileum	H&E stain	GMS stain
<i>Histoplasma capsulatum</i> [36]	Terminal ileum		PAS stain
<i>Coccidioides</i> spp.[37]	Colon		
<i>Paracoccidioides</i> spp.[38]	Colorectal		
Viral			
Cytomegalovirus[39]	Jejunioileal	H&E stain	CMV immunostain
Herpes simplex virus[40]	Colorectal		HSV I/II immunostain
Parasite			
<i>Entamoeba histolytica</i> [41]	Colon	H&E stain	Giemsa stain
<i>Enterobius vermicularis</i> [42]	Colorectal		Serology
<i>Taenia saginata</i> [43]	Ileum		Stool examination
<i>Strongyloides stercoralis</i> [44]	Colon		
<i>Anisakis</i> spp.[45]	Ileum		
Hookworm (<i>Ancylostoma duodenale</i> , <i>Necator americanus</i>)[46]	Jejunioileal		

¹Adapted from Shojaei *et al*[47].

CMV: Cytomegalovirus; GMS: Grocott-Gomori's Methenamine Silver; H&E: Hematoxylin and eosin; HSV: Herpes simplex virus; PAS: Periodic acid-Schiff.

testing results. Distinction of these entities is vital as the optimal treatment for one disease could lead to exacerbation of the other. A list of infectious diseases that should be excluded in patients diagnosed as inflammatory bowel disease (IBD) is provided in Table 2.

CONCLUSION

Gastrointestinal involvement with *H. capsulatum* in the absence of pulmonary manifestations is exceedingly rare and may lead to delay in recognition due to overlapping symptoms with IBD. This case highlights the importance of excluding infectious etiologies in patients with "biopsy-proven" CD prior to initiating immunosuppressive therapies, especially in the setting of recent travel or exposure in an endemic area. Communication between clinicians and pathologists is crucial as tests for *Histoplasma*

antigen in urine or serum should be performed once histoplasmosis is suspected.

FOOTNOTES

Author contributions: Miller CQ served as the primary author; Miller CQ and Collins K are responsible for this literature review; Miller CQ, Saeed OAM, and Collins K were responsible in the construction of the manuscript; Collins K served as the senior author, provided invaluable educational input and managed the edits of the manuscript, and guided the primary author through the submission process; All authors read, revised, and gave approval of the manuscript.

Informed consent statement: All study participants or their legal guardian provided informed written consent about personal and medical data collection prior to study enrollment.

Conflict-of-interest statement: All the authors report no relevant conflicts of interest for this article.

CARE Checklist (2016) statement: The authors have read the CARE Checklist (2016), and the manuscript was prepared and revised according to the CARE Checklist (2016).

Open-Access: This article is an open-access article that was selected by an in-house editor and fully peer-reviewed by external reviewers. It is distributed in accordance with the Creative Commons Attribution NonCommercial (CC BY-NC 4.0) license, which permits others to distribute, remix, adapt, build upon this work non-commercially, and license their derivative works on different terms, provided the original work is properly cited and the use is non-commercial. See: <https://creativecommons.org/licenses/by-nc/4.0/>

Country/Territory of origin: United States

ORCID number: C Quinn Miller 0000-0002-1362-7828; Omer A M Saeed 0000-0002-4584-9222; Katrina Collins 0000-0002-9603-6731.

S-Editor: Fan JR

L-Editor: A

P-Editor: Fan JR

REFERENCES

- 1 Goodwin RA Jr, Des Prez RM. State of the art: histoplasmosis. *Am Rev Respir Dis* 1978; **117**: 929-956 [PMID: 655496 DOI: 10.1164/arrd.1978.117.5.929]
- 2 Goodwin RA, Loyd JE, Des Prez RM. Histoplasmosis in normal hosts. *Medicine (Baltimore)* 1981; **60**: 231-266 [PMID: 7017339 DOI: 10.1097/00005792-198107000-00001]
- 3 Liu B, Qu L, Zhu J, Yang Z, Yan S. Histoplasmosis mimicking metastatic spinal tumour. *J Int Med Res* 2017; **45**: 1440-1446 [PMID: 28606017 DOI: 10.1177/0300060517708530]
- 4 Kabangila R, Semvua K, Rambau P, Jackson K, Mshana SE, Jaka H, Peck RN. Pulmonary histoplasmosis presenting as chronic productive cough, fever, and massive unilateral consolidation in a 15-year-old immune-competent boy: a case report. *J Med Case Rep* 2011; **5**: 374 [PMID: 21843324 DOI: 10.1186/1752-1947-5-374]
- 5 Kauffman CA. Histoplasmosis: a clinical and laboratory update. *Clin Microbiol Rev* 2007; **20**: 115-132 [PMID: 17223625 DOI: 10.1128/CMR.00027-06]
- 6 Goodwin RA Jr, Shapiro JL, Thurman GH, Thurman SS, Des Prez RM. Disseminated histoplasmosis: clinical and pathologic correlations. *Medicine (Baltimore)* 1980; **59**: 1-33 [PMID: 7356773]
- 7 Reddy P, Gorelick DF, Brasher CA, Larsh H. Progressive disseminated histoplasmosis as seen in adults. *Am J Med* 1970; **48**: 629-636 [PMID: 5425240 DOI: 10.1016/0002-9343(70)90014-8]
- 8 Smith JW, Utz JP. Progressive disseminated histoplasmosis. A prospective study of 26 patients. *Ann Intern Med* 1972; **76**: 557-565 [PMID: 4640314 DOI: 10.7326/0003-4819-76-4-557]
- 9 Lamps LW, Molina CP, West AB, Haggitt RC, Scott MA. The pathologic spectrum of gastrointestinal and hepatic histoplasmosis. *Am J Clin Pathol* 2000; **113**: 64-72 [PMID: 10631859 DOI: 10.1309/XOY2-P3GY-TWE8-DM02]
- 10 Kahi CJ, Wheat LJ, Allen SD, Sarosi GA. Gastrointestinal histoplasmosis. *Am J Gastroenterol* 2005; **100**: 220-231 [PMID: 15654803 DOI: 10.1111/j.1572-0241.2005.40823.x]
- 11 Psarros G, Kauffman CA. Colonic histoplasmosis: a difficult diagnostic problem. *Gastroenterol Hepatol (N Y)* 2007; **3**: 461-463 [PMID: 23329906]
- 12 Hage CA, Ribes JA, Wengenack NL, Baddour LM, Assi M, McKinsey DS, Hammoud K, Alapat D, Babady NE, Parker M, Fuller D, Noor A, Davis TE, Rodgers M, Connolly PA, El Haddad B, Wheat LJ. A multicenter evaluation of tests for diagnosis of histoplasmosis. *Clin Infect Dis* 2011; **53**: 448-454 [PMID: 21810734 DOI: 10.1093/cid/cir435]
- 13 Assi MA, Sandid MS, Baddour LM, Roberts GD, Walker RC. Systemic histoplasmosis: a 15-year retrospective institutional review of 111 patients. *Medicine (Baltimore)* 2007; **86**: 162-169 [PMID: 17505255 DOI: 10.1097/md.0b013e3180679130]
- 14 Xi L, Qin X, Song Y, Han J, Li Z, Zhang J. Gut Microbial Alterations in Diarrheal Baer's Pochards (*Aythya baeri*). *Front*

- Vet Sci* 2021; **8**: 756486 [PMID: 34722711 DOI: 10.3389/fvets.2021.756486]
- 15 **Turner D**, Griffiths AM. Esophageal, gastric, and duodenal manifestations of IBD and the role of upper endoscopy in IBD diagnosis. *Curr Gastroenterol Rep* 2007; **9**: 475-478 [PMID: 18377798 DOI: 10.1007/s11894-007-0062-8]
 - 16 **Kuriyama M**, Kato J, Morimoto N, Fujimoto T, Okada H, Yamamoto K. Specific gastroduodenoscopic findings in Crohn's disease: Comparison with findings in patients with ulcerative colitis and gastroesophageal reflux disease. *Dig Liver Dis* 2008; **40**: 468-475 [PMID: 18328794 DOI: 10.1016/j.dld.2008.01.008]
 - 17 **Mekhjjan HS**, Switz DM, Melnyk CS, Rankin GB, Brooks RK. Clinical features and natural history of Crohn's disease. *Gastroenterology* 1979; **77**: 898-906 [PMID: 381094]
 - 18 **Alberti-Flor JJ**, Granda A. Ileocecal histoplasmosis mimicking Crohn's disease in a patient with Job's syndrome. *Digestion* 1986; **33**: 176-180 [PMID: 3949095 DOI: 10.1159/000199290]
 - 19 **Steiner SJ**, Kleiman MB, Corkins MR, Christenson JC, Wheat LJ. Ileocecal histoplasmosis simulating Crohn disease in a patient with hyperimmunoglobulin E syndrome. *Pediatr Infect Dis J* 2009; **28**: 744-746 [PMID: 19633521 DOI: 10.1097/INF.0b013e31819b65e0]
 - 20 **Agarwal P**, Capoor MR, Singh M, Gupta A, Chhakchhuak A, Debatta P. An Unusual Presentation of Disseminated Histoplasmosis: Case Report and Review of Pediatric Immunocompetent Patients from India. *Mycopathologia* 2015; **180**: 359-364 [PMID: 26126955 DOI: 10.1007/s11046-015-9917-y]
 - 21 **Kweyamba V**, Apiyo M, Olika B, Kituuka O. A Case of a 4-Year-Old Boy with a Mesenteric Chylous Cyst Infected with Histoplasma capsulatum. *Case Rep Surg* 2016; **2016**: 4296059 [PMID: 26881169 DOI: 10.1155/2016/4296059]
 - 22 **Acharyya BC**, Acharyya S, Chakrabarty H. Isolated gastrointestinal histoplasmosis: A rare diagnosis of pediatric chronic abdominal pain. *Indian J Pathol Microbiol* 2021; **64**: 827-830 [PMID: 34673616 DOI: 10.4103/IJPM.IJPM_235_20]
 - 23 **Soper RT**, Silber DL, Holcomb GW Jr. Gastrointestinal histoplasmosis in children. *J Pediatr Surg* 1970; **5**: 32-39 [PMID: 4907732 DOI: 10.1016/0022-3468(70)90517-8]
 - 24 **Illyekyj A**, Greenberg H, Bernstein CN. Escherichia coli O157:H7 infection mimicking Crohn's disease. *Gastroenterology* 1997; **112**: 995-999 [PMID: 9041263 DOI: 10.1053/gast.1997.v112.pm9041263]
 - 25 **Lin WC**, Chang CW, Chen MJ, Chu CH, Shih SC, Hsu TC, Wang HY. Challenges in the diagnosis of ulcerative colitis with concomitant bacterial infections and chronic infectious colitis. *PLoS One* 2017; **12**: e0189377 [PMID: 29211811 DOI: 10.1371/journal.pone.0189377]
 - 26 **Friesen C**, Hill I, Woods C. Salmonella gastroenteritis mimicking onset of inflammatory bowel disease in children. *J Pediatr Gastroenterol Nutr* 2008; **46**: 84-86 [PMID: 18162839 DOI: 10.1097/01.mpg.0000304459.30294.78]
 - 27 **Cohen GS**, Prasad M. Campylobacter Pouchitis Mimicking the Appearance of Crohn's Disease. *Case Rep Gastrointest Med* 2016; **2016**: 5254914 [PMID: 27555972 DOI: 10.1155/2016/5254914]
 - 28 **Naddei R**, Martinelli M, Strisciuglio C, D'Armiento M, Vollaro A, Staiano A, Miele E. Yersinia Enterocolitica Ileitis Mimicking Pediatric Crohn's Disease. *Inflamm Bowel Dis* 2017; **23**: E15-E16 [PMID: 28230560 DOI: 10.1097/MIB.0000000000001052]
 - 29 **Issa M**, Ananthakrishnan AN, Binion DG. Clostridium difficile and inflammatory bowel disease. *Inflamm Bowel Dis* 2008; **14**: 1432-1442 [PMID: 18484669 DOI: 10.1002/ibd.20500]
 - 30 **Arnold CA**, Roth R, Arsenescu R, Harzman A, Lam-Himlin DM, Limketkai BN, Montgomery EA, Voltaggio L. Sexually transmitted infectious colitis vs inflammatory bowel disease: distinguishing features from a case-controlled study. *Am J Clin Pathol* 2015; **144**: 771-781 [PMID: 26486742 DOI: 10.1309/AJCPOID4JIJ6PISC]
 - 31 **Yilmaz M**, Memisoglu R, Aydin S, Tabak O, Mete B, Memisoglu N, Tabak F. Anorectal syphilis mimicking Crohn's disease. *J Infect Chemother* 2011; **17**: 713-715 [PMID: 21437679 DOI: 10.1007/s10156-011-0234-1]
 - 32 **Gallegos M**, Bradly D, Jakate S, Keshavarzian A. Lymphogranuloma venereum proctosigmoiditis is a mimicker of inflammatory bowel disease. *World J Gastroenterol* 2012; **18**: 3317-3321 [PMID: 22783058 DOI: 10.3748/wjg.v18.i25.3317]
 - 33 **van der Gaag EJ**, Roelofs E, Tummers RF. [Aeromonas caviae infection mimicking inflammatory bowel disease in a child]. *Ned Tijdschr Geneesk* 2005; **149**: 712-714 [PMID: 15819138]
 - 34 **Rafael MA**, Martins Figueiredo L, Oliveira AM, Nuno Costa M, Theias Manso R, Martins A. Gastrointestinal Tuberculosis Mimicking Crohn's Disease. *GE Port J Gastroenterol* 2020; **27**: 278-282 [PMID: 32775550 DOI: 10.1159/000504719]
 - 35 **Chavapradit N**, Angkasekwinai N. Disseminated cryptococcosis in Crohn's disease: a case report. *BMC Infect Dis* 2018; **18**: 620 [PMID: 30514241 DOI: 10.1186/s12879-018-3553-3]
 - 36 **Ahmed A**, Homs N, Kapila R. Crohn's disease or histoplasmosis? *Med Mycol Case Rep* 2020; **30**: 8-11 [PMID: 32953428 DOI: 10.1016/j.mmcr.2020.08.003]
 - 37 **Mitter SS**, Derhovanessian A, Hillman JD, Usulan DZ. Disseminated coccidioidomycosis in a patient managed with adalimumab for Crohn's disease. *Nat Rev Gastroenterol Hepatol* 2010; **7**: 231-235 [PMID: 20376095 DOI: 10.1038/nrgastro.2010.20]
 - 38 **Lomazi EA**, de Negreiros LMV, Magalhães PVVS, Togni RCS, de Paiva NM, Ribeiro AF, Leal RF. Intestinal paracoccidioidomycosis resembling Crohn's disease in a teenager: a case report. *J Med Case Rep* 2018; **12**: 108 [PMID: 29706133 DOI: 10.1186/s13256-018-1641-z]
 - 39 **Khan FN**, Prasad V, Klein MD. Cytomegalovirus enteritis mimicking Crohn's disease in a lupus nephritis patient: a case report. *World J Gastroenterol* 2009; **15**: 4327-4330 [PMID: 19750578 DOI: 10.3748/wjg.15.4327]
 - 40 **Sandgren KE**, Price NB, Bishop WP, McCarthy PJ. Herpes Simplex Proctitis Mimicking Inflammatory Bowel Disease in a Teenaged Male. *Case Rep Pediatr* 2017; **2017**: 3547230 [PMID: 28473937 DOI: 10.1155/2017/3547230]
 - 41 **Cheng CW**, Feng CM, Chua CS. Cecal amebiasis mimicking inflammatory bowel disease. *J Int Med Res* 2020; **48**: 300060520922379 [PMID: 32475192 DOI: 10.1177/0300060520922379]
 - 42 **Johansson J**, Ignatova S, Ekstedt M. Pinworm infestation mimicking crohn's disease. *Case Rep Gastrointest Med* 2013; **2013**: 706197 [PMID: 23555063 DOI: 10.1155/2013/706197]
 - 43 **Nussinson E**, Yair-Sabag S, Shibli F. Detection of Taenia saginata infection mimicking Crohn's disease using video capsule endoscopy. *Clin Case Rep* 2018; **6**: 741-744 [PMID: 29636951 DOI: 10.1002/ccr3.1415]

- 44 **Yoon J**, Kaur M. Strongyloides stercoralis infection mimicking Crohn's disease [Abstract]. *Am J Gastroenterol* 2013; **108**: S429-S430
- 45 **Montalto M**, Miele L, Marcheggiano A, Santoro L, Curigliano V, Vastola M, Gasbarrini G. Anisakis infestation: a case of acute abdomen mimicking Crohn's disease and eosinophilic gastroenteritis. *Dig Liver Dis* 2005; **37**: 62-64 [PMID: 15702862 DOI: 10.1016/j.dld.2004.05.014]
- 46 **Aktay AN**. Hookworm infection mimicking Crohn's disease: diagnosed with wireless capsule endoscopy. *Ann Pediatr Child Health* 2015; **3**: 1083
- 47 **Shojaei E**, Walsh JC, Sangle N, Yan B, Silverman MS, Hosseini-Moghaddam SM. Gastrointestinal Histoplasmosis Mimicking Crohn's Disease. *Open Forum Infect Dis* 2021; **8**: ofab249 [PMID: 34262987 DOI: 10.1093/ofid/ofab249]



Published by **Baishideng Publishing Group Inc**
7041 Koll Center Parkway, Suite 160, Pleasanton, CA 94566, USA

Telephone: +1-925-3991568

E-mail: bpgoffice@wjgnet.com

Help Desk: <https://www.f6publishing.com/helpdesk>

<https://www.wjgnet.com>

