

World Journal of *Clinical Cases*

World J Clin Cases 2023 April 6; 11(10): 2123-2362



Contents

Thrice Monthly Volume 11 Number 10 April 6, 2023

EVIDENCE REVIEW

- 2123** Fractional flow reserve and non-hyperemic indices: Essential tools for percutaneous coronary interventions

Boutaleb AM, Ghafari C, Ungureanu C, Carlier S

REVIEW

- 2140** Diagnosis, treatment protocols, and outcomes of liver transplant recipients infected with COVID-19

Hashem M, El-Kassas M

MINIREVIEWS

- 2160** Treatment of stellate ganglion block in diseases: Its role and application prospect

Deng JJ, Zhang CL, Liu DW, Huang T, Xu J, Liu QY, Zhang YN

- 2168** Clinical application of SARS-CoV-2 antibody detection and monoclonal antibody therapies against COVID-19

Sun J, Yang ZD, Xie X, Li L, Zeng HS, Gong B, Xu JQ, Wu JH, Qu BB, Song GW

- 2181** Cheesy material on macroscopic on-site evaluation after endoscopic ultrasound-guided fine-needle biopsy: Don't miss the tuberculosis

Delsa H, Bellahammou K, Okasha HH, Ghalim F

- 2189** Liver manifestations in COVID-19 patients: A review article

Helou M, Nasr J, El Osta N, Jabbour E, Husni R

- 2201** Breast reconstruction: Review of current autologous and implant-based techniques and long-term oncologic outcome

Malekpour M, Malekpour F, Wang HTH

- 2213** Update on the current management of persistent and recurrent primary hyperparathyroidism after parathyroidectomy

Pavlidis ET, Pavlidis TE

ORIGINAL ARTICLE

Retrospective Study

- 2226** Hepatobiliary system and intestinal injury in new coronavirus infection (COVID-19): A retrospective study

Kozlov KV, Zhdanov KV, Ratnikova AK, Ratnikov VA, Tishkov AV, Grinevich V, Kravchuk YA, Miklush PI, Nikiforova PO, Gordienko VV, Popov AF, Andryukov BG

- 2237** Impact of lockdown policies during the COVID-19 outbreak on a trauma center of a tertiary hospital in China

Shen BS, Cheng WY, Liang ZR, Tang Q, Li KY

Observational Study

- 2246** Interaction between the left ventricular ejection fraction and left ventricular strain and its relationship with coronary stenosis
Gui HY, Liu SW, Zhu DF

CASE REPORT

- 2254** Neonatal hyperinsulinism with an *ABCC8* mutation: A case report
Liu MT, Yang HX
- 2260** Unilateral contrast-induced encephalopathy with contrast medium exudation: A case report
Zhang ZY, Lv H, Wang PJ, Zhao DY, Zhang LY, Wang JY, Hao JH
- 2267** Diagnosis and treatment of primary seminoma of the prostate: A case report and review of literature
Cao ZL, Lian BJ, Chen WY, Fang XD, Jin HY, Zhang K, Qi XP
- 2276** Primary intra-abdominal paraganglioma: A case report
Guo W, Li WW, Chen MJ, Hu LY, Wang XG
- 2282** Successful surgical treatment of bronchopleural fistula caused by severe pulmonary tuberculosis: A case report and review of literature
Shen L, Jiang YH, Dai XY
- 2290** Clinical and genetic features of Kenny-Caffey syndrome type 2 with multiple electrolyte disturbances: A case report
Yuan N, Lu L, Xing XP, Wang O, Jiang Y, Wu J, He MH, Wang XJ, Cao LW
- 2301** Dupilumab for treatment of severe atopic dermatitis accompanied by lichenoid amyloidosis in adults: Two case reports
Zhao XQ, Zhu WJ, Mou Y, Xu M, Xia JX
- 2308** Reabsorption of intervertebral disc prolapse after conservative treatment with traditional Chinese medicine: A case report
Wang CA, Zhao HF, Ju J, Kong L, Sun CJ, Zheng YK, Zhang F, Hou GJ, Guo CC, Cao SN, Wang DD, Shi B
- 2315** Development of subdural empyema from subdural effusion after suppurative encephalitis: A case report
Yang RX, Chen B, Zhang Y, Yang Y, Xie S, He L, Shi J
- 2321** Treatment of periprosthetic knee infection and coexistent periprosthetic fracture: A case report and literature review
Hao LJ, Wen PF, Zhang YM, Song W, Chen J, Ma T
- 2329** Formation of a rare curve-shaped thoracolith documented on serial chest computed tomography images: A case report
Hsu FC, Huang TW, Pu TW
- 2336** Neurofibromatosis type 1 with multiple gastrointestinal stromal tumors: A case report
Yao MQ, Jiang YP, Yi BH, Yang Y, Sun DZ, Fan JX

- 2343** Coexisting cytomegalovirus colitis in an immunocompetent patient with *Clostridioides difficile* colitis: A case report
Kim JH, Kim HS, Jeong HW
- 2349** Paradoxical vocal fold motion masquerading as post-anesthetic respiratory distress: A case report
Baek J, Jee DL, Choi YS, Kim SW, Choi EK
- 2355** Full neurological recovery from severe nonexertional heat stroke with multiple organ dysfunction: A case report
Du F, Zheng JW, Zhao YB, Yang K, Li HN

ABOUT COVER

Editorial Board Member of *World Journal of Clinical Cases*, Abdullah Gul, MD, PhD, Associate Professor, Department of Urology, University of Health Sciences Turkey, Bursa Yuksek Ihtisas Training and Research Hospital, Bursa 16310, Turkey. dr_abdullahgul@hotmail.com

AIMS AND SCOPE

The primary aim of *World Journal of Clinical Cases* (WJCC, *World J Clin Cases*) is to provide scholars and readers from various fields of clinical medicine with a platform to publish high-quality clinical research articles and communicate their research findings online.

WJCC mainly publishes articles reporting research results and findings obtained in the field of clinical medicine and covering a wide range of topics, including case control studies, retrospective cohort studies, retrospective studies, clinical trials studies, observational studies, prospective studies, randomized controlled trials, randomized clinical trials, systematic reviews, meta-analysis, and case reports.

INDEXING/ABSTRACTING

The WJCC is now abstracted and indexed in Science Citation Index Expanded (SCIE, also known as SciSearch®), Journal Citation Reports/Science Edition, Current Contents®/Clinical Medicine, PubMed, PubMed Central, Scopus, Reference Citation Analysis, China National Knowledge Infrastructure, China Science and Technology Journal Database, and Superstar Journals Database. The 2022 Edition of Journal Citation Reports® cites the 2021 impact factor (IF) for WJCC as 1.534; IF without journal self cites: 1.491; 5-year IF: 1.599; Journal Citation Indicator: 0.28; Ranking: 135 among 172 journals in medicine, general and internal; and Quartile category: Q4. The WJCC's CiteScore for 2021 is 1.2 and Scopus CiteScore rank 2021: General Medicine is 443/826.

RESPONSIBLE EDITORS FOR THIS ISSUE

Production Editor: *Xu Guo*; Production Department Director: *Xiang Li*; Editorial Office Director: *Jin-Lei Wang*.

NAME OF JOURNAL

World Journal of Clinical Cases

ISSN

ISSN 2307-8960 (online)

LAUNCH DATE

April 16, 2013

FREQUENCY

Thrice Monthly

EDITORS-IN-CHIEF

Bao-Gan Peng, Jerzy Tadeusz Chudek, George Kontogeorgos, Maurizio Serati, Ja Hyeon Ku

EDITORIAL BOARD MEMBERS

<https://www.wjgnet.com/2307-8960/editorialboard.htm>

PUBLICATION DATE

April 6, 2023

COPYRIGHT

© 2023 Baishideng Publishing Group Inc

INSTRUCTIONS TO AUTHORS

<https://www.wjgnet.com/bpg/gerinfo/204>

GUIDELINES FOR ETHICS DOCUMENTS

<https://www.wjgnet.com/bpg/GerInfo/287>

GUIDELINES FOR NON-NATIVE SPEAKERS OF ENGLISH

<https://www.wjgnet.com/bpg/gerinfo/240>

PUBLICATION ETHICS

<https://www.wjgnet.com/bpg/GerInfo/288>

PUBLICATION MISCONDUCT

<https://www.wjgnet.com/bpg/gerinfo/208>

ARTICLE PROCESSING CHARGE

<https://www.wjgnet.com/bpg/gerinfo/242>

STEPS FOR SUBMITTING MANUSCRIPTS

<https://www.wjgnet.com/bpg/GerInfo/239>

ONLINE SUBMISSION

<https://www.f6publishing.com>

Unilateral contrast-induced encephalopathy with contrast medium exudation: A case report

Zhi-Yuan Zhang, Hang Lv, Pei-Jian Wang, Dan-Yang Zhao, Li-Yong Zhang, Ji-Yue Wang, Ji-Heng Hao

Specialty type: Neurosciences

Provenance and peer review:

Unsolicited article; Externally peer reviewed.

Peer-review model: Single blind

Peer-review report's scientific quality classification

Grade A (Excellent): 0

Grade B (Very good): B

Grade C (Good): C, C

Grade D (Fair): D

Grade E (Poor): 0

P-Reviewer: Fernandes SA, Brazil; Pitton Rissardo J, Brazil; Tavan H, Iran

Received: November 3, 2022

Peer-review started: November 3, 2022

First decision: December 26, 2022

Revised: February 8, 2023

Accepted: March 3, 2023

Article in press: March 3, 2023

Published online: April 6, 2023



Zhi-Yuan Zhang, Pei-Jian Wang, Li-Yong Zhang, Ji-Yue Wang, Ji-Heng Hao, Department of Neurosurgery, Liaocheng People's Hospital, Liaocheng 252001, Shandong Province, China

Hang Lv, School of Clinical Medicine, Weifang Medical University, Weifang 261053, Shandong Province, China

Dan-Yang Zhao, Department of Neurology, Shenyang First People's Hospital, Shenyang 110041, Liaoning Province, China

Corresponding author: Ji-Heng Hao, Doctor, Professor, Department of Neurosurgery, Liaocheng People's Hospital, No. 45 Huashan Road, Economic Development Zone, Dongchangfu District, Liaocheng 252001, Shandong Province, China. haojiheng@163.com

Abstract

BACKGROUND

Contrast-induced encephalopathy (CIE) is a rare transient, reversible abnormality in the structure or function of the nervous system caused by the intravascular use of contrast agents. CIE can present with a range of neurological manifestations, including focal neurological deficits (hemiplegia, hemianopia, cortical blindness, aphasia, and parkinsonism) and systemic symptoms (confusion, seizures, and coma). However, if not accurately diagnosed and treated in a timely manner, CIE can cause irreversible damage to patients, especially critically ill patients.

CASE SUMMARY

A male in his 50 s, 2 h after digital subtraction angiography, had a progressive disorder of consciousness, mixed aphasia, bilateral pupillary sluggish light reflex, and right limb weakness. Seven hours after the procedure, he developed unconsciousness, high fever (39.5 °C), seizures, hemiplegia, neck stiffness (+), and right Babinski signs (+). computed tomography (CT) findings 2 h postprocedure were very confusing and led us to misdiagnose the patient with subarachnoid hemorrhage. Brain CT was performed again 7 h after the procedure. Compared with the CT 2 h after the procedure, the CT 7 h after the procedure showed that the manifestations of subarachnoid hemorrhage in the left cerebral hemisphere had disappeared and were replaced by brain tissue swelling, and the cerebral sulci had disappeared. Combined with the clinical manifestations of the patient and after the exclusion of subarachnoid hemorrhage and cerebrovascular embolism, we diagnosed the patient with CIE, and intravenous fluids were given for adequate hydration, as well as mannitol, albumin dehydration, furosemide and the glucocorticoid methylprednisolone. After 17 d of active treatment, the

patient was discharged with no sequelae.

CONCLUSION

CIE should be taken seriously, but it is easily misdiagnosed, and once CIE is diagnosed, rapid, accurate diagnosis and treatment are critical steps. Whether a follow-up examination using a contrast agent can be performed should be closely evaluated, and the patient should be fully informed of the associated risks.

Key Words: Contrast agents; Diagnosis; Encephalopathy; Mechanisms; Treatment

©The Author(s) 2023. Published by Baishideng Publishing Group Inc. All rights reserved.

Core Tip: Contrast-induced encephalopathy (CIE) is a rare disease induced by the injection of contrast agents. In this case, unilateral CIE was caused by a long time of internal carotid arteriogram on left side and a large amount of contrast agent. The onset was misdiagnosed as subarachnoid hemorrhage at an early stage, and he was discharged without sequelae after 18 d of diagnosis and treatment of CIE. The main treatment measures are corticosteroids, dehydration and diuresis, and adequate hydration. Rapid, accurate diagnosis and treatment are critical steps. Whether the follow-up examination using contrast agent can be done should be closely evaluated and fully informed.

Citation: Zhang ZY, Lv H, Wang PJ, Zhao DY, Zhang LY, Wang JY, Hao JH. Unilateral contrast-induced encephalopathy with contrast medium exudation: A case report. *World J Clin Cases* 2023; 11(10): 2260-2266

URL: <https://www.wjgnet.com/2307-8960/full/v11/i10/2260.htm>

DOI: <https://dx.doi.org/10.12998/wjcc.v11.i10.2260>

INTRODUCTION

Contrast-induced encephalopathy (CIE) is a rare, transient, reversible abnormality in the structure or function of the nervous system caused by the intravascular use of contrast agents. It can present with a range of neurological manifestations, including focal neurological deficits (hemiplegia, hemianopia, cortical blindness, aphasia, and parkinsonism) and systemic symptoms (confusion, seizures, and coma) [1,2]. In general, the severity of the clinical manifestations of CIE varies, ranging from mild headache symptoms to severe clinical manifestations such as coma and even death. We report a case of severe unilateral contrast-induced encephalopathy characterized by acute unilateral hemispheric neurological dysfunction. The incidence of CIE is less than 1%, and unilateral concentration of lesions is less commonly reported. Compared with bilateral lesions, unilateral lesions are more confusing and need to be distinguished from subarachnoid hemorrhage and cerebrovascular embolism or spasm. This case is special in that the lesion was concentrated on one side (left side), the symptoms lasted for a long time, and the condition was misdiagnosed during the initial course of treatment. Our report aims to improve the awareness of this condition so as to provide early diagnosis and active treatment and effectively prevent the occurrence of irreversible damage to patients.

CASE PRESENTATION

Chief complaints

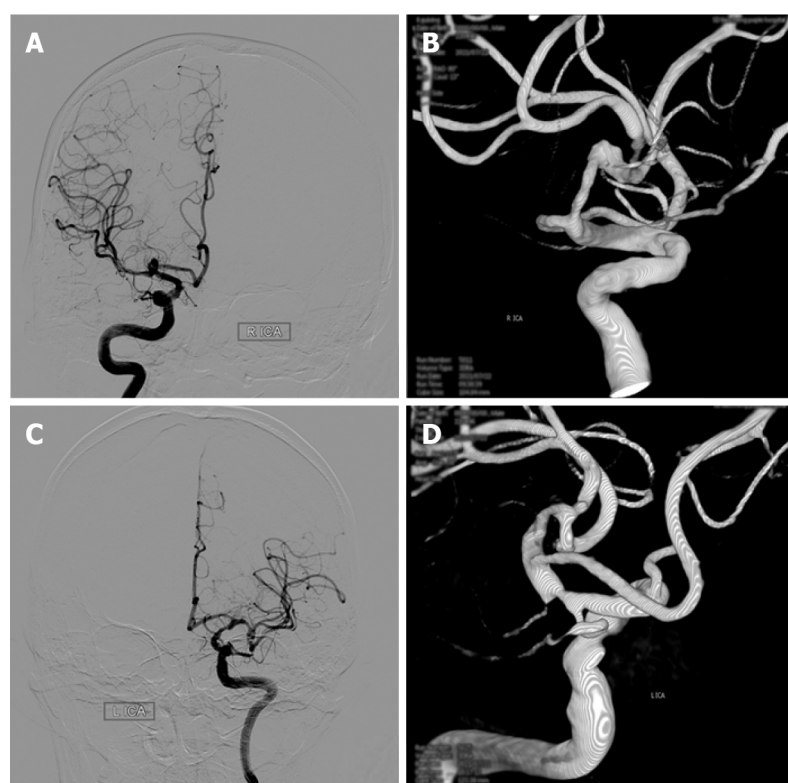
A male in his 50 s was admitted to the hospital because of “headache for 1 d”.

History of present illness

The patient had episodic headache 1 d before without obvious causes. At that time, he recorded his blood pressure at 178/100 mmHg, and he took “valsartan”. He had no rotatory vision and no nausea or vomiting.

History of past illness

A middle-aged male with a 10-year history of hypertension who was taking “valsartan” orally for treatment. He had a 3-year history of diabetes and was treated with oral “metformin” with unknown glycemic control.



DOI: 10.12998/wjcc.v11.i10.2260 Copyright ©The Author(s) 2023.

Figure 1 Angiography of the intracranial aneurysm. A and B: The right middle cerebral artery aneurysm; C and D: Digital subtraction angiography showing the left internal carotid artery terminal aneurysm.

Personal and family history

The patient and his family had no relevant medical history.

Physical examination

Vital signs: R 22 times/min P 90 times/min H 170 cm T 36.2 °C W 75 kg BP 118/81 mmHg. The patient was conscious, with fluent speech and equal-sized and round pupils with a diameter of 3 mm. The presence of light reflex, flexible eye movements in all directions, bilateral nasolabial fold symmetry, and tongue protrusion to the left was noted. Other cranial nerves were normal. His limb muscle strength was grade 5 and muscle tension was acceptable, tendon reflexes (++), and bilateral pathological signs were negative. His sense of depth and lightness was normal, and motor function was normal.

Imaging examinations

Digital subtraction angiography (DSA) confirmed the diagnosis of a middle cerebral artery aneurysm (Figure 1). Two hours later, the patient suddenly had slurred speech, accompanied by right limb weakness. An emergency CT scan (within 15 min of onset) showed that the density of the interhemispheric cistern, the left fissure cistern, and the left part of the sulcus was increased (Figure 2). Subarachnoid hemorrhage was considered first and treated accordingly. Seven hours after DSA, the patient's condition significantly deteriorated, and the nervous system examination findings are shown in Table 1. A re-examination of the brain computed tomography (CT) showed significant changes: the temporal, parietal, and occipital lobes of the brain were swollen, the high-density shadows in the sulci and gyri had disappeared, and the sulci and gyri had become shallow and disappeared (Figure 2).

FINAL DIAGNOSIS

The patient was diagnosed as contrast-induced encephalopathy.

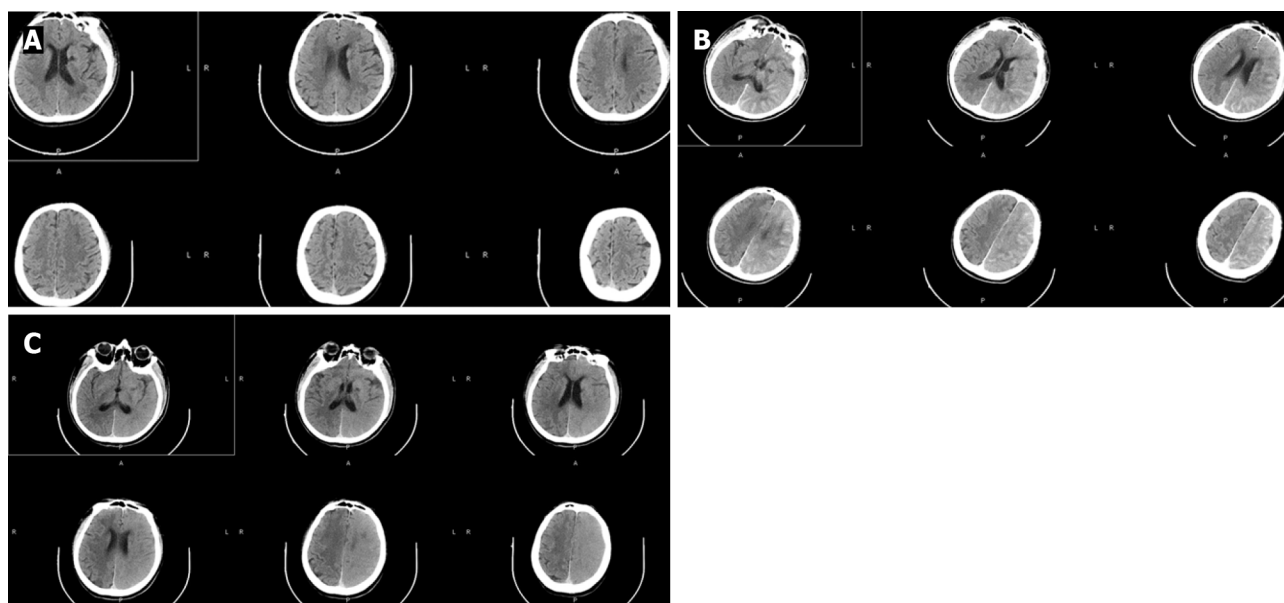
TREATMENT

CIE was considered at this time, and then the patient was given intravenous fluid for full hydration,

Table 1 Patient's nervous system physical examination during hospitalization

	Preoperative	2 h after DSA	7 h	3 d	6 d	On discharge
Vital signs	R 22 times/min; P 90 times/min; H 170 cm; T 36.2 °C; W 75 kg; BP 118/81 mmHg		High fever (39.5 °C)			
Nervous system examination findings	The patient was conscious, with fluent speech and equal-sized and round pupils with a diameter of 3 mm. The presence of light reflex, flexible eye movements in all directions, bilateral nasolabial fold symmetry, and tongue protrusion to the left was noted. Other cranial nerves were normal. His limb muscle strength was grade 5 and muscle tension was acceptable, tendon reflexes (++), and bilateral pathological signs were negative. His sense of depth and lightness was normal, and motor function was normal	He suddenly had slurred speech, accompanied by right limb weakness	He developed unconsciousness, high fever (39.5 °C), seizures, hemiplegia of the right limb, neck stiffness (+), and right Babinski signs (+)	His consciousness gradually improved, he was able to open eyes voluntarily, and he could answer simple questions even though he was not fluent in speech. His pupils were equal in size and round, with a diameter of 3 mm. His light reflex was sluggish, his eyes moved flexibly in all directions, and his bilateral nasolabial folds were symmetrical. His muscle tension of the four limbs was acceptable, the left limb movement was acceptable, the right limb muscle strength was grade 3, tendon reflexes (+), and right pathological signs (+)	The patient was clearly conscious, but his speech was still not fluent. The seizures did not recur. The muscle strength of the healthy limb recovered to grade 4	The patient was conscious and in good spirits. He had fluent speech. Both pupils were of equal size and were round, 3 mm in diameter. The presence of the light reflex, flexible eye movements in all directions, bilateral nasolabial fold symmetry, and tongue protrusion to the left (same as preprocedure) was noted. The remaining cranial nerves were not (see exception). The muscle strength of the limbs was grade 5, the muscle tension was acceptable, the tendon reflex (+), and the bilateral Babinski signs were negative

DSA: Digital subtraction angiography; R: Respiratory; P: Pulse; H: Height; W: Weight; BP: Blood pressure.



DOI: 10.12998/wjcc.v11.i10.2260 Copyright ©The Author(s) 2023.

Figure 2 Computed tomography of the brain before and 2 h and 7 h after the procedure. A: The normal occipital lobe of the left cerebral hemisphere on the preprocedure computed Tomography (CT); B: The increased density of the interhemispheric cistern, left fissure cistern and part of the left sulcus on CT 2 h after digital subtraction angiography (DSA); C: Seven hours after DSA, indicating the swelling of the left frontal, temporal, parietal and occipital lobe brain tissue, the disappearance of the high-density shadow of sulci and gyri, the shallow appearance of the sulci and gyri, and the higher density of the left cerebral hemisphere than the right cerebral hemisphere.

including 20% mannitol 250 mL Q6H, albumin 10 g bid for dehydration and furosemide 20 mg bid to accelerate the excretion of contrast media and reduce cerebral edema; the glucocorticoid methylprednisolone 40 mg bid was given to protect the blood-brain barrier. However, the patient was still restless, with limb convulsions and grand mal seizures. After intravenous injection of diazepam 10 mg, the seizures stopped; continuous intravenous pump dexmedetomidine was continued, and continuous intravenous pump sodium valproate 1.2 g was added to combat epilepsy symptoms.

OUTCOME AND FOLLOW-UP

Three days after the treatment, the patient's consciousness gradually improved, and the nervous system examination findings are shown in Table 1. A repeat cranial CT showed that the swelling of brain tissue was significantly reduced, and there was no significant difference in the density of the bilateral cerebral hemispheres (Figure 3). On the 6th d, the patient was clearly conscious, but his speech was still not fluent, and his muscle strength level was 4. On the 17th d, there was no obvious abnormality in cranial magnetic resonance imaging (MRI) examination (Figure 3). When the patient was discharged on the 18th postprocedure day, there were no sequelae.

DISCUSSION

The first documented case of CIE was reported in 1970, and the patient presented with transient cortical blindness after coronary angiography[3]. According to a systematic review published in December 2020, the total number of CIE cases recorded after coronary angiography was 75[4].

It has been reported in the literature that contrast-induced encephalopathy usually occurs 2-12 h after the injection of contrast agent and disappears within 24-72 h, with a reported incidence of 0.06%[5]. Our department has conducted more than 3000 DSA procedures, and this is the first case of CIE. The pathogenesis of contrast-induced encephalopathy is still unclear, and potential mechanisms include: (1) Blood-brain barrier disruption: Normally, iodine compounds do not cross the blood-brain barrier. It is speculated that the integrity of the blood-brain barrier is destroyed during CIE, and the contrast agent penetrates into the central nervous system[6,7]; (2) neurotoxic effects: The blood-brain barrier is destroyed, and the contrast agent extravasation and direct stimulation of nerve cells caused by it led to neurotoxicity; however, the mechanism of the direct toxicity of contrast agents to neurons has not been elucidated; and (3) iodinated contrast agents can promote transient vasoconstriction. Animal studies have shown that iodinated contrast agents can increase the release of endothelin from endothelial cells and reduce the production of nitric oxide[8].

The clinical manifestations of CIE vary in severity, ranging from mild headache symptoms to severe clinical manifestations such as coma and even death. The clinical manifestations of CIE reported in the literature include transient cortical blindness and neurological symptoms such as restlessness, visual hallucinations, and deafness. Physical examination shows delirium state, increased muscle tone, tendon hyperreflexia, and positive pathological signs.

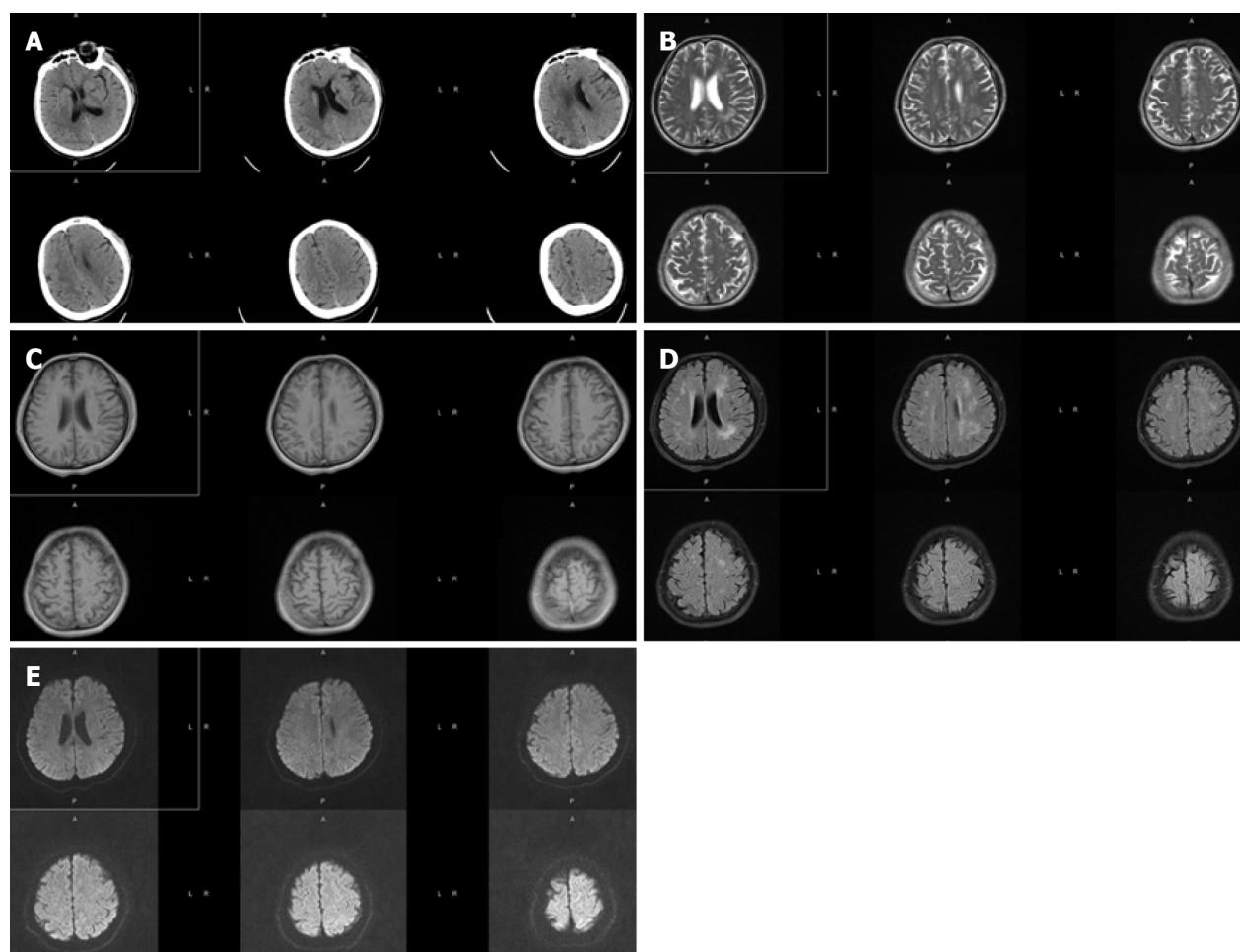
Based on the CT 2 h after DSA, we misdiagnosed the patient with subarachnoid hemorrhage (SAH). The disturbance of consciousness rapidly and progressively worsened 7 h after DSA. To exclude increased bleeding, new intracranial hemorrhage and cerebral infarction, the cranial CT was re-examined, and CIE was confirmed. Subarachnoid hemorrhage-like changes on CT in CIE have not been reported before. CIE imaging contrast enhancement, bleeding 40-60 (HU), CIE 100-300 (HU). MRI: T2, DWI and FLAIR high signal, MRI-derived apparent diffusion coefficient (ADC) in acute ischemic stroke ADC decreased, normal in CIE, can serve to differentiate from intracranial hemorrhage[9]. The diagnosis of CIE has to be based on both clinical symptoms and neurological signs: It appears within minutes to hours after the injection of an iodinated contrast agent. It usually recovers completely within 48-72 h. Other pathological processes, such as cerebral ischemia, *etc.*, should be excluded. In this case, the neurological deficit lasted for a significantly longer time, and the symptoms began to resolve on the 3rd d after DSA. On the 6th d, there was still a lack of fluency in speech and poor calculation skills, but there were no sequelae at the 3-mo follow-up.

In this case, the lesions in this patient were mainly concentrated on the left side. This patient was a male with a history of hypertension, hyperlipidemia, and diabetes. Combined with intracranial aneurysm, the patient is prone to blood-brain barrier damage and belongs to the CIE risk group. In addition to common risk factors, the surgeon considered that the procedure time of angiography on the left side was longer than that on the right side, and the amount of contrast agent used was higher than that on the right side.

The patient did not undergo further interventional therapy for the aneurysm after DSA. Regarding the risk of CIE recurrence, Law reported a patient with binocular vision impairment following a previous cardiac catheterization who was prescribed antihistamines and corticosteroids as prophylaxis before a second procedure, but seizures and hemianopia occurred after the second angiography using iodixanol; these symptoms resolved after 24 h[10]. Spina reported a 65-year-old man with transient limb weakness after angiography. After a second coronary angiography two years later, he showed complete aphasia postprocedure despite preprocedure corticosteroids[11]. However, patients with a previous history of CIE who undergo repeat cardiac catheterization without adverse reactions after limiting the amount of contrast agent used and providing adequate hydration have also been reported. Therefore, the relevant reports show inconsistent conclusions on the recurrence of CIE.

CONCLUSION

In view of the large number of procedures in which contrast agents are used every year worldwide, CIE should be taken seriously. In patients with neurological and psychiatric symptoms after angiography, the possibility of CIE needs to be considered, but CIE must be distinguished from acute cerebrovascular accidents, including subarachnoid hemorrhage. Treatment measures include mainly corticosteroids, dehydration and diuresis, and adequate hydration. Patients with a history of contrast-induced encephalopathy should be carefully evaluated before any subsequent intravascular injection of contrast media and should be fully informed of the relevant risks.



DOI: 10.12998/wjcc.v11.i10.2260 Copyright ©The Author(s) 2023.

Figure 3 Computed tomography 3 d after digital subtraction angiography and magnetic resonance imaging 17 d after digital subtraction angiography. A: The brain computed tomography (CT) 3 d after digital subtraction angiography (DSA), which showed that brain tissue swelling in the left cerebral hemisphere was significantly reduced, and there was no significant difference in the density of bilateral cerebral hemispheres; B-E: Brain magnetic resonance imaging re-examination 17 d after DSA. The signals of T1, T2, and diffusion-weighted imaging in bilateral brain tissues were symmetrical without significant differences.

FOOTNOTES

Author contributions: Zhang ZY contributed to conception and design of experiments, implementation of research, collection of data, analysis/interpretation of data, and drafting articles; Lv H contributed to conduct research, analyze/interpret data, and draft articles; Wang PJ contributed to collect data and draft articles; Zhao DY contributed to analyze/interpret data, draft articles, and critical review of the intellectual content of articles; Zhang LY contributed to work support, access to research funding, guidance, and supportive contributions; Wang JY contributed to work support, access to research funding, guidance, and supportive contributions; Hao JH contributed to conception and design of experiments, guidance, and supportive contributions.

Informed consent statement: Informed written consent was obtained from the patients for the publication of this report and any accompanying images.

Conflict-of-interest statement: The authors declare that they have no conflict of interest.

CARE Checklist (2016) statement: The authors have read the CARE Checklist (2016), and the manuscript was prepared and revised according to the CARE Checklist (2016).

Open-Access: This article is an open-access article that was selected by an in-house editor and fully peer-reviewed by external reviewers. It is distributed in accordance with the Creative Commons Attribution NonCommercial (CC BY-NC 4.0) license, which permits others to distribute, remix, adapt, build upon this work non-commercially, and license their derivative works on different terms, provided the original work is properly cited and the use is non-commercial. See: <https://creativecommons.org/licenses/by-nc/4.0/>

Country/Territory of origin: China

ORCID number: Hang Lv 0000-0001-6738-6938; Li-Yong Zhang 0000-0001-5831-6823; Ji-Heng Hao 0000-0002-0299-3830.

S-Editor: Chen YL

L-Editor: A

P-Editor: Chen YL

REFERENCES

- 1 Sawaya RA, Hammoud R, Arnaout S, Alam S. Contrast-induced encephalopathy following coronary angioplasty with iohexol. *South Med J* 2007; **100**: 1054-1055 [PMID: 17943057 DOI: 10.1097/SMJ.0b013e3181540086]
- 2 Frontera JA, Pile-Spellman J, Mohr JP. Contrast-induced neurotoxicity and selective cortical injury. *Cerebrovasc Dis* 2007; **24**: 148-151 [PMID: 17565207 DOI: 10.1159/000103621]
- 3 Fischer-Williams M, Gottschalk PG, Browell JN. Transient cortical blindness. An unusual complication of coronary angiography. *Neurology* 1970; **20**: 353-355 [PMID: 5534969 DOI: 10.1212/wnl.20.4.353]
- 4 Kariyanna PT, Aurora L, Jayarangaiah A, Das S, Gonzalez JC, Hegde S, McFarlane IM. Neurotoxicity Associated with Radiological Contrast Agents Used during Coronary Angiography: A Systematic Review. *Am J Med Case Rep* 2020; **8**: 60-66 [PMID: 32440532 DOI: 10.12691/ajmcr-8-2-6]
- 5 de Bono D. Complications of diagnostic cardiac catheterisation: results from 34,041 patients in the United Kingdom confidential enquiry into cardiac catheter complications. The Joint Audit Committee of the British Cardiac Society and Royal College of Physicians of London. *Br Heart J* 1993; **70**: 297-300 [PMID: 8398509 DOI: 10.1136/hrt.70.3.297]
- 6 Sterrett PR, Bradley IM, Kitten GT, Janssen HF, Holloway LS. Cerebrovasculature permeability changes following experimental cerebral angiography. A light- and electron-microscopic study. *J Neurol Sci* 1976; **30**: 385-403 [PMID: 1003253 DOI: 10.1016/0022-510x(76)90142-8]
- 7 Lalli AF. Contrast media reactions: data analysis and hypothesis. *Radiology* 1980; **134**: 1-12 [PMID: 6985735 DOI: 10.1148/radiology.134.1.6985735]
- 8 Yanagisawa M, Inoue A, Ishikawa T, Kasuya Y, Kimura S, Kumagaye S, Nakajima K, Watanabe TX, Sakakibara S, Goto K. Primary structure, synthesis, and biological activity of rat endothelin, an endothelium-derived vasoconstrictor peptide. *Proc Natl Acad Sci U S A* 1988; **85**: 6964-6967 [PMID: 3045827 DOI: 10.1073/pnas.85.18.6964]
- 9 Yu J, Dangas G. Commentary: New insights into the risk factors of contrast-induced encephalopathy. *J Endovasc Ther* 2011; **18**: 545-546 [PMID: 21861746 DOI: 10.1583/11-3476C.1]
- 10 Law S, Panichpisal K, Demede M, John S, Marmur JD, Nath J, Baird AE. Contrast-Induced Neurotoxicity following Cardiac Catheterization. *Case Rep Med* 2012; **2012**: 267860 [PMID: 23251169 DOI: 10.1155/2012/267860]
- 11 Spina R, Simon N, Markus R, Muller DW, Kathir K. Recurrent contrast-induced encephalopathy following coronary angiography. *Intern Med J* 2017; **47**: 221-224 [PMID: 28201864 DOI: 10.1111/imj.13321]



Published by **Baishideng Publishing Group Inc**
7041 Koll Center Parkway, Suite 160, Pleasanton, CA 94566, USA

Telephone: +1-925-3991568

E-mail: bpgoffice@wjgnet.com

Help Desk: <https://www.f6publishing.com/helpdesk>

<https://www.wjgnet.com>

