

World Journal of *Clinical Cases*

World J Clin Cases 2023 July 6; 11(19): 4458-4733



Contents

Thrice Monthly Volume 11 Number 19 July 6, 2023

REVIEW

- 4458 Molecular signalling during cross talk between gut brain axis regulation and progression of irritable bowel syndrome: A comprehensive review
Singh SV, Ganguly R, Jaiswal K, Yadav AK, Kumar R, Pandey AK
- 4477 Diffusion tensor imaging in the courtroom: Distinction between scientific specificity and legally admissible evidence
van Velkinburgh JC, Herbst MD, Casper SM

MINIREVIEWS

- 4498 Inequity in the global distribution of monkeypox vaccines
Tovani-Palone MR, Doshi N, Pedersini P
- 4504 Long-term effectiveness, outcomes and complications of bariatric surgery
Gulinac M, Miteva DG, Peshevska-Sekulovska M, Novakov IP, Antovic S, Peruhova M, Snegarova V, Kabakchieva P, Assyov Y, Vasilev G, Sekulovski M, Lazova S, Tomov L, Velikova T

ORIGINAL ARTICLE

Retrospective Cohort Study

- 4513 Age, blood tests and comorbidities and AIMS65 risk scores outperform Glasgow-Blatchford and pre-endoscopic Rockall score in patients with upper gastrointestinal bleeding
Morarasu BC, Sorodoc V, Haisan A, Morarasu S, Bologa C, Haliga RE, Lionte C, Marciuc EA, Elsiddig M, Cimpoesu D, Dimofte GM, Sorodoc L

Retrospective Study

- 4531 Application of cross-migration theory in limb rehabilitation of stroke patients with hemiplegia
Lu YH, Fu Y, Shu J, Yan LY, Shen HJ
- 4544 Analysis of characteristic features in ultrasound diagnosis of fetal limb body wall complex during 11-13⁺ weeks
Ye CH, Li S, Ling L
- 4553 Network pharmacology and molecular docking-based analyses to predict the potential mechanism of Huangqin decoction in treating colorectal cancer
Li YJ, Tang DX, Yan HT, Yang B, Yang Z, Long FX
- 4567 Assessment of functional prognosis of anterior cruciate ligament reconstruction in athletes based on a body shape index
Wang YJ, Zhang JC, Zhang YZ, Liu YH

EVIDENCE-BASED MEDICINE

- 4579** Network pharmacology and molecular docking to explore Polygoni Cuspidati Rhizoma et Radix treatment for acute lung injury

Zheng JL, Wang X, Song Z, Zhou P, Zhang GJ, Diao JJ, Han CE, Jia GY, Zhou X, Zhang BQ

ORIGINAL ARTICLE**Randomized Controlled Trial**

- 4601** Ulinastatin in the treatment of severe acute pancreatitis: A single-center randomized controlled trial

Wang SQ, Jiao W, Zhang J, Zhang JF, Tao YN, Jiang Q, Yu F

- 4612** Fecal microbiota transplantation in patients with metabolic syndrome and obesity: A randomized controlled trial

da Ponte Neto AM, Clemente ACO, Rosa PW, Ribeiro IB, Funari MP, Nunes GC, Moreira L, Sparvoli LG, Cortez R, Taddei CR, Mancini MC, de Moura EGH

SYSTEMATIC REVIEWS

- 4625** Combined medial patellofemoral ligament and medial patellotibial ligament reconstruction in recurrent patellar instability: A systematic review and meta-analysis

Abbaszadeh A, Saeedi M, Hoveidaei AH, Dadgostar H, Razi S, Razi M

CASE REPORT

- 4635** Unique Roberts syndrome with bilateral congenital glaucoma: A case report

Almulhim A, Almoallem B, Alsirhy E, Osman EA

- 4640** CK5/6-positive, P63-positive lymphoepithelioma-like hepatocellular carcinoma: A case report and literature review

Tang HT, Lin W, Zhang WQ, Qian JL, Li K, He K

- 4648** Edaravone administration and its potential association with a new clinical syndrome in cerebral infarction patients: Three case reports

Yang L, Xu X, Wang L, Zeng KB, Wang XF

- 4655** CDKN1C gene mutation causing familial Silver-Russell syndrome: A case report and review of literature

Li J, Chen LN, He HL

- 4664** Hypothetical hypoxia-driven rapid disease progression in hepatocellular carcinoma post transarterial chemoembolization: A case report

Yeo KF, Ker A, Kao PE, Wang CC

- 4670** Metastatic colon cancer treated using traditional Chinese medicine combined with chemotherapy: A case report

Deng CG, Tang MY, Pan X, Liu ZH

- 4677** Rare cause of cerebral venous sinus thrombosis: Spontaneous intracranial hypotension syndrome: A case report

Huang P

- 4684** Integrated Chinese and Western medicine in the treatment of a patient with podocyte infolding glomerulopathy: A case report
Chang MY, Zhang Y, Li MX, Xuan F
- 4692** Morbihan disease misdiagnosed as senile blepharoptosis and successfully treated with short-term minocycline and ketotifen: A case report
Na J, Wu Y
- 4698** With two episodes of right retromandibular angle subcutaneous emphysema during right upper molar crown preparation: A case report
Bai YP, Sha JJ, Chai CC, Sun HP
- 4707** Poststroke rehabilitation using repetitive transcranial magnetic stimulation during pregnancy: A case report
Jo J, Kim H
- 4713** Tuberculosis-induced aplastic crisis and atypical lymphocyte expansion in advanced myelodysplastic syndrome: A case report and review of literature
Sun XY, Yang XD, Xu J, Xiu NN, Ju B, Zhao XC
- 4723** Posterior reversible encephalopathy syndrome following uneventful clipping of an unruptured intracranial aneurysm: A case report
Hwang J, Cho WH, Cha SH, Ko JK

ACADEMIC WRITING

- 4729** Revitalizing case reports: Standardized guidelines and mentorship
Jeyaraman M, Ramasubramanian S, Jeyaraman N, Nallakumarasamy A, Sharma S

ABOUT COVER

Editorial Board Member of *World Journal of Clinical Cases*, Miroslav Vujasinovic, MD, PhD, Associate Professor, Department of Upper Abdominal Diseases, Karolinska University Hospital, Stockholm 14186, Sweden. mvujas@gmail.com

AIMS AND SCOPE

The primary aim of *World Journal of Clinical Cases* (WJCC, *World J Clin Cases*) is to provide scholars and readers from various fields of clinical medicine with a platform to publish high-quality clinical research articles and communicate their research findings online.

WJCC mainly publishes articles reporting research results and findings obtained in the field of clinical medicine and covering a wide range of topics, including case control studies, retrospective cohort studies, retrospective studies, clinical trials studies, observational studies, prospective studies, randomized controlled trials, randomized clinical trials, systematic reviews, meta-analysis, and case reports.

INDEXING/ABSTRACTING

The WJCC is now abstracted and indexed in Science Citation Index Expanded (SCIE, also known as SciSearch®), Journal Citation Reports/Science Edition, Current Contents®/Clinical Medicine, PubMed, PubMed Central, Reference Citation Analysis, China National Knowledge Infrastructure, China Science and Technology Journal Database, and Superstar Journals Database. The 2023 Edition of Journal Citation Reports® cites the 2022 impact factor (IF) for WJCC as 1.1; IF without journal self cites: 1.1; 5-year IF: 1.3; Journal Citation Indicator: 0.26; Ranking: 133 among 167 journals in medicine, general and internal; and Quartile category: Q4.

RESPONSIBLE EDITORS FOR THIS ISSUE

Production Editor: Si Zhao; Production Department Director: Xiang Li; Editorial Office Director: Jin-Lei Wang.

NAME OF JOURNAL

World Journal of Clinical Cases

ISSN

ISSN 2307-8960 (online)

LAUNCH DATE

April 16, 2013

FREQUENCY

Thrice Monthly

EDITORS-IN-CHIEF

Bao-Gan Peng, Jerzy Tadeusz Chudek, George Kontogeorgos, Maurizio Serati, Ja Hyeon Ku

EDITORIAL BOARD MEMBERS

<https://www.wjgnet.com/2307-8960/editorialboard.htm>

PUBLICATION DATE

July 6, 2023

COPYRIGHT

© 2023 Baishideng Publishing Group Inc

INSTRUCTIONS TO AUTHORS

<https://www.wjgnet.com/bpg/gerinfo/204>

GUIDELINES FOR ETHICS DOCUMENTS

<https://www.wjgnet.com/bpg/GerInfo/287>

GUIDELINES FOR NON-NATIVE SPEAKERS OF ENGLISH

<https://www.wjgnet.com/bpg/gerinfo/240>

PUBLICATION ETHICS

<https://www.wjgnet.com/bpg/GerInfo/288>

PUBLICATION MISCONDUCT

<https://www.wjgnet.com/bpg/gerinfo/208>

ARTICLE PROCESSING CHARGE

<https://www.wjgnet.com/bpg/gerinfo/242>

STEPS FOR SUBMITTING MANUSCRIPTS

<https://www.wjgnet.com/bpg/GerInfo/239>

ONLINE SUBMISSION

<https://www.f6publishing.com>



Hypothetical hypoxia-driven rapid disease progression in hepatocellular carcinoma post transarterial chemoembolization: A case report

Kai-Fuan Yeo, Amy Ker, Pei-En Kao, Chi-Chih Wang

Specialty type: Gastroenterology and hepatology

Provenance and peer review: Unsolicited article; Externally peer reviewed.

Peer-review model: Single blind

Peer-review report's scientific quality classification

Grade A (Excellent): 0
Grade B (Very good): 0
Grade C (Good): C
Grade D (Fair): D
Grade E (Poor): 0

P-Reviewer: koganti SB, United States; Radhakrishnan K, South Korea

Received: February 18, 2023

Peer-review started: February 18, 2023

First decision: May 16, 2023

Revised: May 25, 2023

Accepted: June 6, 2023

Article in press: June 6, 2023

Published online: July 6, 2023



Kai-Fuan Yeo, Chi-Chih Wang, Division of Gastroenterology and Hepatology, Department of Internal Medicine, Chung Shan Medical University Hospital, Taichung 402306, Taiwan

Amy Ker, Pei-En Kao, Chi-Chih Wang, School of Medicine, Chung Shan Medical University, Taichung 402306, Taiwan

Corresponding author: Chi-Chih Wang, PhD, Associate Professor, Director, Division of Endoscopy, Department of Internal Medicine, Chung Shan Medical University Hospital, No. 110 Sec. 1, Jiangsu N. Rd., Taichung 402306, Taiwan.

bananaudwang@gmail.com

Abstract

BACKGROUND

Transarterial chemoembolization (TACE) is widely performed for intermediate-stage or unresectable hepatocellular carcinoma (HCC), but approximately half of patients do not respond to TACE treatment. We describe a case of rapidly progressing of HCC after TACE and provide a possible hypothesis for this condition. The finding may contribute to identifying patients who obtain less benefit from TACE, thus avoiding the unnecessary waste of medical resources and treatment during the golden hour window.

CASE SUMMARY

A 61-year-old woman had been diagnosed with chronic hepatitis B infection and HCC at Barcelona Clinic Liver Cancer stage B, which had been treated by segmental hepatectomy 14 mo ago. The tumor recurred in the two months after surgery. She received an initial TACE and then underwent systemic therapy with lenvatinib 8 mg daily due to an increased level of alpha-fetoprotein (AFP) after the first TACE. However, the tumor continued to progress with an increased level of AFP, and she underwent a second TACE, after which the tumor volume did not obviously decrease on the contrast-enhanced computed tomography image. One month later, she had a third TACE to control the residual HCC tumors. Two weeks after that, the HCC had increased dramatically with tea-colored urine and yellowish skin turgor. Eventually, the patient refused further treatment and went into hospice care.

CONCLUSION

Intense hypoxia induced by TACE can trigger rapid disease progression in infil-

rative HCC patients with a large tumor burden

Key Words: Carcinoma; hepatocellular; Transarterial chemoembolization; Tumor hypoxia; Disease progression; Tumor burden; Case report

©The Author(s) 2023. Published by Baishideng Publishing Group Inc. All rights reserved.

Core Tip: We report an hepatocellular carcinoma (HCC) case with a large tumor burden and infiltrative tumor pattern who exhibited rapidly increased tumor volume within two weeks after undergoing a third trans-arterial chemoembolization (TACE). Although the Barcelona Clinic Liver Cancer staging system classifies multinodular HCC without portal invasion or extrahepatic spread in stage B, it appears that TACE is not suitable for those with a large tumor burden or infiltrative tumor pattern. In addition, hypoxia is an important factor for tumor development, metastasis, and drug resistance. Our case suggests that intense hypoxia induced by TACE may lead to the rapid progression of HCC.

Citation: Yeo KF, Ker A, Kao PE, Wang CC. Hypothetical hypoxia-driven rapid disease progression in hepatocellular carcinoma post transarterial chemoembolization: A case report. *World J Clin Cases* 2023; 11(19): 4664-4669

URL: <https://www.wjgnet.com/2307-8960/full/v11/i19/4664.htm>

DOI: <https://dx.doi.org/10.12998/wjcc.v11.i19.4664>

INTRODUCTION

Primary liver cancer was the third-leading cause of cancer death globally in 2020, with an age-standardized incidence rate of 19.3 cases per 100000 people and an age-standardized mortality rate of 17.7 per 100000 people[1]. Hepatocellular carcinoma (HCC) is the most common type of liver cancer, accounting for approximately 75%–85% of cases. Clinically, trans-arterial chemoembolization (TACE) is used as the first-line treatment for patients with Barcelona Clinic Liver Cancer (BCLC) stage B and some unresectable HCC[2,3]. TACE injects cytotoxic agents into the arteries, followed by the embolization of tumor blood vessels, which induces strong cytotoxic and ischemic effects to destroy tumor cells. However, the response rate of intermediate-stage HCC patients receiving TACE is low for unclear reasons, with a pooled objective response rate of about 52%[4]. To our best knowledge, only a few studies have investigated the baseline characteristics of those not benefitting from TACE, such as large tumor volume, high tumor number, and poor performance status[5,6]. In our case, an intermediate-stage HCC patient underwent a third TACE and experienced rapid disease progression within two weeks. This case may provide information on the failure of and resistance to TACE in HCC treatment.

CASE PRESENTATION

Chief complaints

Progressive yellowish skin turgor and firm sensation over the epigastric area.

History of present illness

A 61-year-old woman had been diagnosed with HCC at BCLC stage B as well as chronic hepatitis B infection 14 mo earlier. Because the typical image of contrast-enhanced abdominal computed tomography (CT) showed three heterogeneous arterial enhancing lesions with delayed phase wash out in segments S4 and S8, with the largest measuring 7.3 cm, she received segmental hepatectomy and cholecystectomy on October 5, 2021 based on the extensive criteria of the University of California San Francisco[7]. Tumor recurrence emerged two months later, and we performed a TACE followed by systemic therapy of lenvatinib 8 mg daily due to an elevated alpha-fetoprotein (AFP) level after the TACE. The subsequent CT confirmed the progression of HCC volume, so we arranged a second course of TACE after the lenvatinib treatment.

History of past illness

The patient had a history of major depression with good medication control.

Personal and family history

The patient denied smoking, alcohol use, and betel nut use. She also denied any family history of malignancy. There was no family history of hepatitis B or hepatitis C.

Physical examination

The patient's height and weight were 162 cm and 60 kg. Her vital signs were stable, with a body temperature of 37.5°C, pulse rate of 90 bpm, respiration rate of 17 breaths per minute, and blood pressure of 136/76 mmHg. A physical examination revealed icteric sclera on the day of admission. A palpable firm mass lesion was observed at the epigastric area.

Laboratory examinations

The laboratory data revealed mild anemia, including a low red blood cell count of 392×10^6 cells/ μ L and a high mean corpuscular hemoglobin of 32.7 pg. The hemoglobin, hematocrit, mean corpuscular volume, and mean corpuscular hemoglobin concentrations were within normal values. Coagulation tests showed a low platelet count of 126000 platelets/ μ L and a prothrombin time/international normalized ratio within the normal value. Alanine aminotransferase and aspartate aminotransferase were elevated at 273 U/L and 272 U/L, respectively, while total bilirubin was 4.7 mg/dL. The renal function tests and electrolyte tests were within normal ranges.

Imaging examinations

An abdominal contrast CT showed increased residual HCC volume (Figure 1A) after the second TACE course. The coronal view showed a patent portal vein and normal bile ducts (Figure 1B). Contrast-enhanced magnetic resonance imaging (MRI) was arranged taken two weeks after a third TACE course because of an episode of jaundice. It revealed rapidly progressing of HCC volume in a short time, with left intra-hepatic duct (IHD) and portal vein tumor invasions (Figure 2).

FINAL DIAGNOSIS

HCC with rapid, extensive progression and left IHD invasion after TACE.

TREATMENT

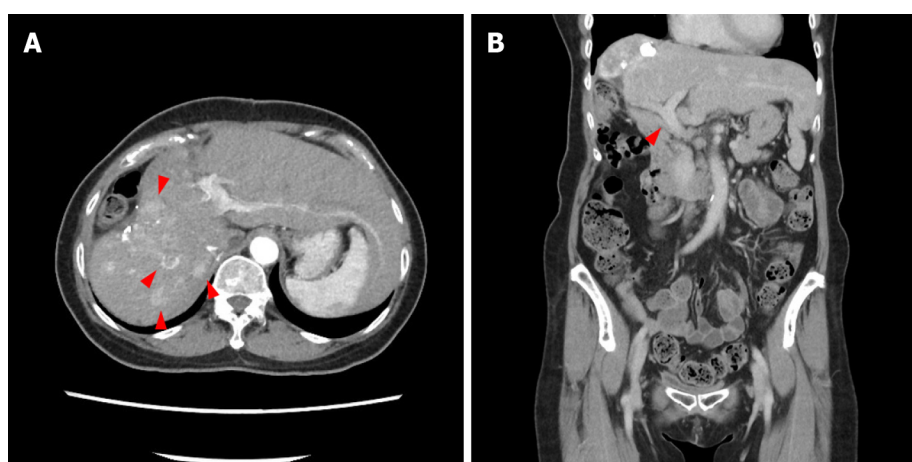
The abdominal enhanced CT still showed increased residual HCC volume and a high AFP level after the second TACE. Therefore, a third TACE was done one month later, after which a firm abdomen over the epigastric area, tea-colored urine, and yellowish skin turgor appeared within two weeks. Abdominal sonography showed dilated left IHDs and a greatly increased liver tumor burden, which were confirmed by a contrast-enhanced MRI. Although we hypothesized that mutations in hypoxia-related genes may contribute to the disease progression after TACE, we did not perform liver biopsies to confirm these mutations due to laboratory limitation in our hospital. We described an endoscopic retrograde cholangiopancreatography intervention for bile duct drainage and immunotherapy to the patient and her husband, which had previously been described in the outpatient clinic before the series of TACE, but she refused and opted for hospice care.

OUTCOME AND FOLLOW-UP

For personal and religious reasons, the patient decided to pursue hospice care and was referred for home hospice care.

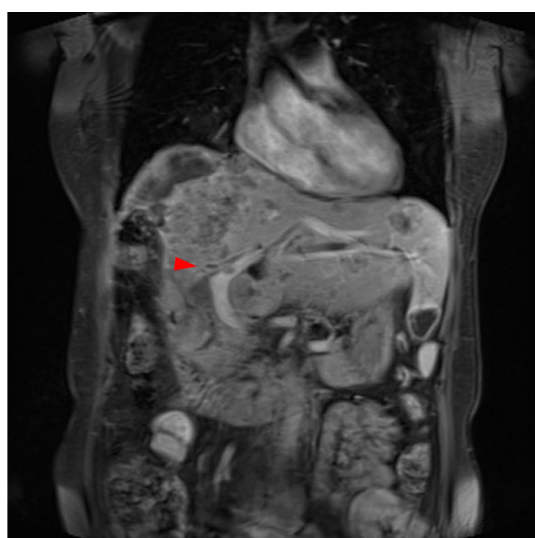
DISCUSSION

TACE is considered a first-line treatment for unresectable, multinodular, or intermediate-stage HCC, according to the European Association for the Study of the Liver and the American Association for the Study of Liver Diseases[2,3]. A systematic review of TACE therapy's efficacy for HCC found an objective response rate of 52.5% (95% confidence interval: 43.6-61.5), and overall survival was 70.3% at one year and 32.4% at five years[4]. However, approximately half of intermediate-stage HCC patients had a poor response to TACE, and the best window for other anticancer therapies was missed due to TACE. In this report, our patient with extensive multinodular HCC had a poor response to the second TACE and rapidly progressed to BCLC stage C HCC within two weeks after the third. Despite the probability of the natural course of the disease, it appeared that TACE stimulated the tumors and



DOI: 10.12998/wjcc.v11.i19.4664 Copyright ©The Author(s) 2023.

Figure 1 Abdominal computed tomography scans following the second transarterial chemoembolization. A: Transverse plane showing multiple hepatocellular carcinoma nodules in the right lobe of the liver (red arrows); B: Coronal plane showing an unobstructed portal vein and typical bile ducts (red arrow).



DOI: 10.12998/wjcc.v11.i19.4664 Copyright ©The Author(s) 2023.

Figure 2 Contrast-enhanced magnetic resonance imaging showed rapid progression of hepatocellular carcinoma volume with involvement of the left intra-hepatic duct and portal vein tumor invasions (red arrow) two weeks after the third transarterial chemoembolization.

rapidly led to this upward stage of transition. In the past decade, several studies have revealed that hypoxia can cause tumor development, tumor angiogenesis, and drug resistance and even promote metastasis, which are mediated by hypoxia-markers including hypoxia-inducible factors (HIF), COX-2, AMP-activated protein kinase and glucose transporter[8-14]. It was reasonably hypothesized that the strong tumor hypoxia induced by TACE may cause drug resistance, rapid growth, invasion, angiogenesis, and metastasis of tumors instead of killing tumor cells. Therefore, these hypoxia-markers might serve as indicators of an unfavourable prognosis in patients who undergoing TACE. While we speculated that mutations in hypoxia-related gene could potentially contribute to an increased tumor burden and disease progression, the clinical use of tests to assess these hypoxia markers is still limited in most hospitals. This may tend to occur in multinodular, large HCC tumors because of multiple regions of intra-tumoral hypoxia and increased expression of HIF[12]. In the prospective study of Tsai *et al*[5], 746 newly diagnosed HCC patients were enrolled, including 624 who received TACE as the primary therapy and 122 who received the best supportive care. Of 624 patients, 102 had a poor response at three months[5]. Among them, 44 died within three months, and 58 patients with rapid disease progressions had contraindications a subsequent TACE for residual tumors, including a high serum bilirubin level, distant metastases, cachexia, main portal vein thrombosis, and regional extrahepatic invasion[5]. The patients with poor responses were of a higher proportion of performance status ≥ 1 , albumin ≤ 3.8 g/dL, Child-Turcotte-Pugh class B, AFP > 40 ng/mL, total tumor volume > 65 cm³, and vascular invasion,

than those without poor responses[5]. Furthermore, a retrospective study found that, among intermediate-stage HCC patients who received repeated TACE as the primary therapy, a multiple tumor number of ≥ 4 and a large tumor size of ≥ 5 cm were independent risks for a shorter time of progression from BCLC stage B to stage C than that of their counterparts[6]. Both studies showed that TACE may be ineffective for intermediate-stage HCC patients with a large tumor burden and may even lead to rapid disease progression, such as portal invasion, extrahepatic spread, and worse liver function. However, the mechanisms are still poorly understood and should be explored in future studies to improve the treatment outcomes of HCC.

Due to the nature of the case report, causality cannot be established and external validity is limited. However, it was unusual for tumors to grow so rapidly in two weeks, indicating that they were likely caused by the third TACE. Large cohort studies and clinical trials are required to explore this relationship. A strength of this study is that our case identified a potential causal relationship in which TACE stimulates tumors to grow rapidly with portal invasion, bile duct invasion, or extrahepatic spread—that is, the upward stage of transition—among specific intermediate-stage patients with a large tumor burden. This case may raise global awareness of the current limitations of the BCLC staging system and contribute to reducing the incidence of ineffective and even harmful TACE treatment in specific patients.

CONCLUSION

Several guidelines recommend TACE as the first-line treatment for intermediate-stage HCC patients. However, even without portal invasion or extrahepatic spread, cases with a large tumor burden and multi-foci tumor infiltration tends not to respond to TACE, and HCC may even increase dramatically.

ACKNOWLEDGEMENTS

We extend our gratitude to the reviewers and editor for their valuable feedback.

FOOTNOTES

Author contributions: Yeo KF, Ker A, and Kao PE reviewed the literature and contributed to manuscript drafting; Wang CC were responsible for the revision and final approval of the manuscript; This article supported by Yeo KF, Yeo KF, and Ker A contributed equally to the manuscript as the first authors.

Informed consent statement: Informed written consent was obtained from the patient for publication of this report and any accompanying images.

Conflict-of-interest statement: The authors declare that they have no conflict of interest to disclose.

CARE Checklist (2016) statement: The authors have read the CARE Checklist (2016), and the manuscript was prepared and revised in accordance with it.

Open-Access: This article is an open-access article that was selected by an in-house editor and fully peer-reviewed by external reviewers. It is distributed in accordance with the Creative Commons Attribution NonCommercial (CC BY-NC 4.0) license, which permits others to distribute, remix, adapt, build upon this work non-commercially, and license their derivative works on different terms, provided the original work is properly cited and the use is non-commercial. See: <https://creativecommons.org/licenses/by-nc/4.0/>

Country/Territory of origin: Taiwan

ORCID number: Kai-Fuan Yeo 0000-0003-2336-3480; Amy Ker 0000-0002-7756-3878; Pei-En Kao 0000-0001-6268-4389; Chi-Chih Wang 0000-0002-8222-0503.

S-Editor: Liu JH

L-Editor: A

P-Editor: Liu JH

REFERENCES

- 1 Sung H, Ferlay J, Siegel RL, Laversanne M, Soerjomataram I, Jemal A, Bray F. Global Cancer Statistics 2020:

- GLOBOCAN Estimates of Incidence and Mortality Worldwide for 36 Cancers in 185 Countries. *CA Cancer J Clin* 2021; **71**: 209-249 [PMID: [33538338](#) DOI: [10.3322/caac.21660](#)]
- 2 **Heimbach JK**, Kulik LM, Finn RS, Sirlin CB, Abecassis MM, Roberts LR, Zhu AX, Murad MH, Marrero JA. AASLD guidelines for the treatment of hepatocellular carcinoma. *Hepatology* 2018; **67**: 358-380 [PMID: [28130846](#) DOI: [10.1002/hep.29086](#)]
 - 3 **European Association for the Study of the Liver**. EASL Clinical Practice Guidelines: Management of hepatocellular carcinoma. *J Hepatol* 2018; **69**: 182-236 [PMID: [29628281](#) DOI: [10.1016/j.jhep.2018.03.019](#)]
 - 4 **Lencioni R**, de Baere T, Soulen MC, Rilling WS, Geschwind JF. Lipiodol transarterial chemoembolization for hepatocellular carcinoma: A systematic review of efficacy and safety data. *Hepatology* 2016; **64**: 106-116 [PMID: [26765068](#) DOI: [10.1002/hep.28453](#)]
 - 5 **Tsai YJ**, Hsu CY, Huang YH, Su CW, Lin HC, Lee RC, Chiang JH, Huo TI, Lee SD. Early identification of poor responders to transarterial chemoembolization for hepatocellular carcinoma. *Hepatol Int* 2011; **5**: 975-984 [PMID: [21533669](#) DOI: [10.1007/s12072-011-9276-9](#)]
 - 6 **Kim HY**, Park JW, Joo J, Jung SJ, An S, Woo SM, Kim HB, Koh YH, Lee WJ, Kim CM. Severity and timing of progression predict refractoriness to transarterial chemoembolization in hepatocellular carcinoma. *J Gastroenterol Hepatol* 2012; **27**: 1051-1056 [PMID: [22098152](#) DOI: [10.1111/j.1440-1746.2011.06963.x](#)]
 - 7 **Decaens T**, Roudot-Thoraval F, Hadni-Bresson S, Meyer C, Gugenheim J, Durand F, Bernard PH, Boillot O, Sulpice L, Calmus Y, Hardwigsen J, Ducerf C, Pageaux GP, Dharancy S, Chazouilleres O, Cherqui D, Duvoux C. Impact of UCSF criteria according to pre- and post-OLT tumor features: analysis of 479 patients listed for HCC with a short waiting time. *Liver Transpl* 2006; **12**: 1761-1769 [PMID: [16964590](#) DOI: [10.1002/Lt.20884](#)]
 - 8 **Godet I**, Shin YJ, Ju JA, Ye IC, Wang G, Gilkes DM. Fate-mapping post-hypoxic tumor cells reveals a ROS-resistant phenotype that promotes metastasis. *Nat Commun* 2019; **10**: 4862 [PMID: [31649238](#) DOI: [10.1038/s41467-019-12412-1](#)]
 - 9 **Gilkes DM**, Semenza GL, Wirtz D. Hypoxia and the extracellular matrix: drivers of tumour metastasis. *Nat Rev Cancer* 2014; **14**: 430-439 [PMID: [24827502](#) DOI: [10.1038/nrc3726](#)]
 - 10 **Erin N**, Grahovac J, Brozovic A, Efferth T. Tumor microenvironment and epithelial mesenchymal transition as targets to overcome tumor multidrug resistance. *Drug Resist Updat* 2020; **53**: 100715 [PMID: [32679188](#) DOI: [10.1016/j.drug.2020.100715](#)]
 - 11 **Lai JP**, Conley A, Knudsen BS, Guindi M. Hypoxia after transarterial chemoembolization may trigger a progenitor cell phenotype in hepatocellular carcinoma. *Histopathology* 2015; **67**: 442-450 [PMID: [25425262](#) DOI: [10.1111/his.12623](#)]
 - 12 **Semenza GL**. Intratumoral Hypoxia and Mechanisms of Immune Evasion Mediated by Hypoxia-Inducible Factors. *Physiology (Bethesda)* 2021; **36**: 73-83 [PMID: [33595388](#) DOI: [10.1152/physiol.00034.2020](#)]
 - 13 **Huang M**, Wang L, Chen J, Bai M, Zhou C, Liu S, Lin Q. Regulation of COX-2 expression and epithelial-to-mesenchymal transition by hypoxia-inducible factor-1 α is associated with poor prognosis in hepatocellular carcinoma patients post TACE surgery. *Int J Oncol* 2016; **48**: 2144-2154 [PMID: [26984380](#) DOI: [10.3892/ijo.2016.3421](#)]
 - 14 **Qu K**, Yan Z, Wu Y, Chen Y, Qu P, Xu X, Yuan P, Huang X, Xing J, Zhang H, Liu C, Zhang J. Transarterial chemoembolization aggravated peritumoral fibrosis via hypoxia-inducible factor-1 α dependent pathway in hepatocellular carcinoma. *J Gastroenterol Hepatol* 2015; **30**: 925-932 [PMID: [25641377](#) DOI: [10.1111/jgh.12873](#)]



Published by **Baishideng Publishing Group Inc**
7041 Koll Center Parkway, Suite 160, Pleasanton, CA 94566, USA

Telephone: +1-925-3991568

E-mail: bpgoffice@wjgnet.com

Help Desk: <https://www.f6publishing.com/helpdesk>

<https://www.wjgnet.com>

