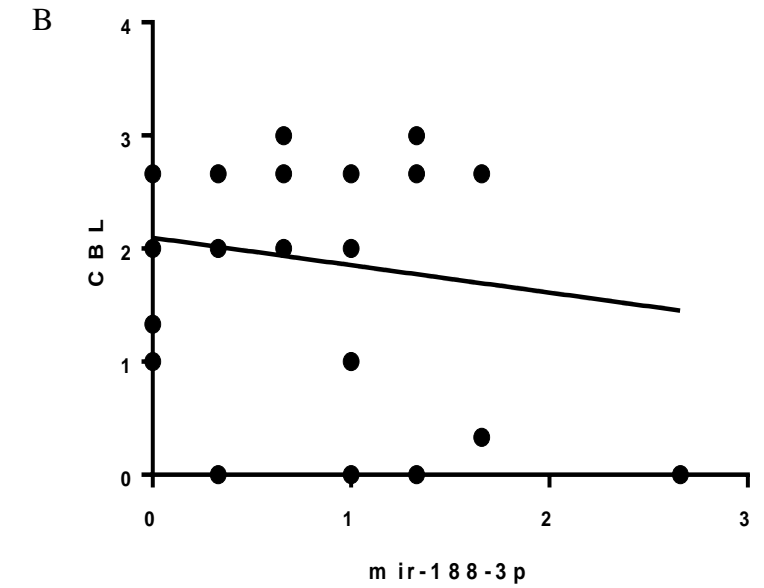
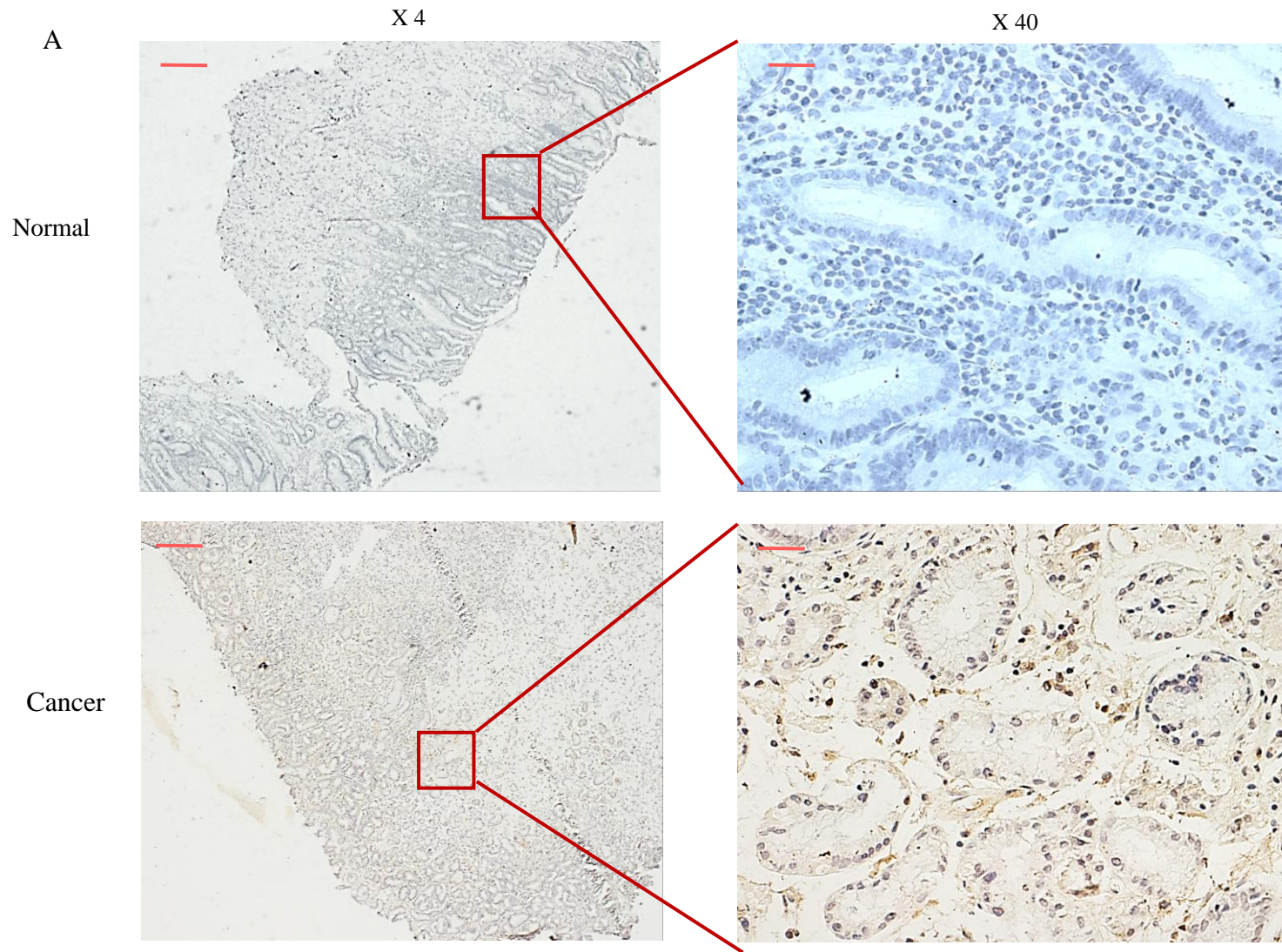
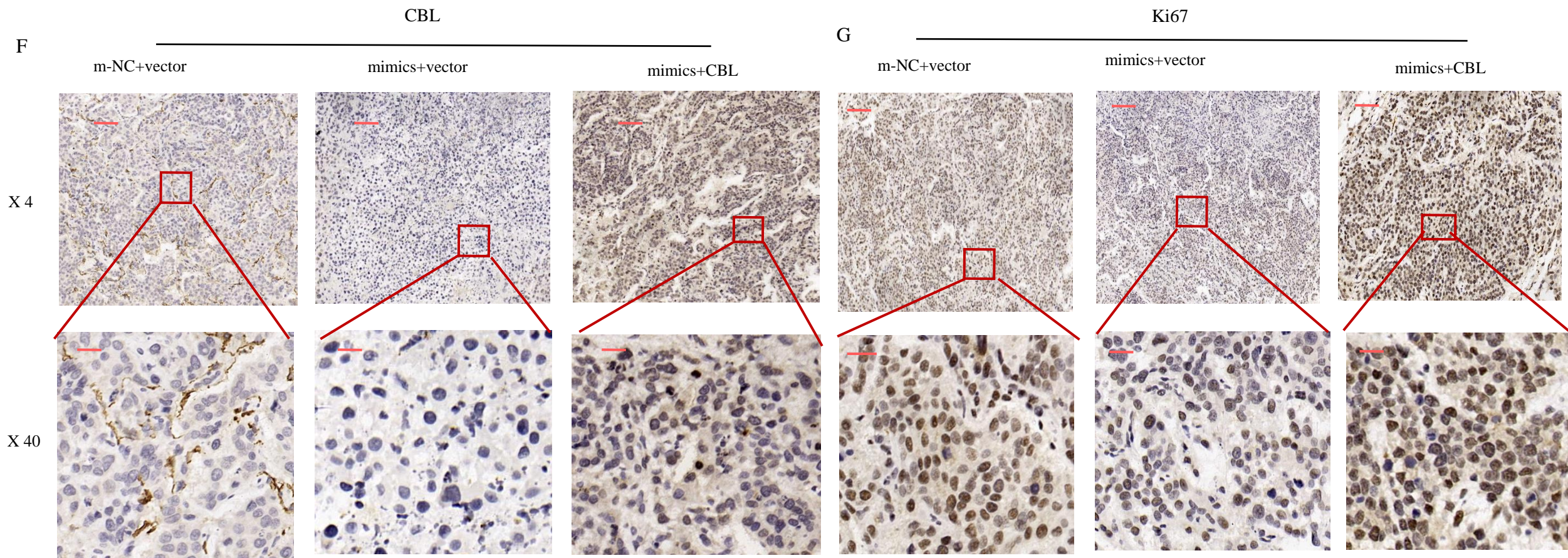


Supplementary Figure 1 miR-188-3p inhibition of gastric cancer cell invasion. A: Cell viability CCK-8 assay. AGS and BGC-823 cells were transfected with miR-188-3p mimics, inhibitor, or their NC and then subjected to CCK-8 assay; B and C: Transwell assay. AGS and BGC-823 cells were seeded for transfection with miR-188-3p mimics, inhibitor, or their NC and assessed for tumor cell invasion capacity using the Transwell assay. ^a $P < 0.01$. Scale bars, 100 μ m.



Supplementary Figure 2 CBL protein was high in gastric cancer tissues. A: IHC. Gastric cancer and adjacent normal tissue samples were stained with the CBL antibody to visualize CBL in tumor cells. CBL protein was high in gastric cancer tissues; B: The association between miR-188-3p and CBL expression.



Supplementary Figure 3 miR-188-3p expression on regulation of gastric cancer cell proliferation *via* the CBL downregulation. A: Immunohistochemistry (IHC). Tumor cell xenografts were resected and processed for IHC staining; B: Immunohistochemistry. The Ki67 antibody was used as the primary antibody for IHC.