

# World Journal of *Methodology*

*World J Methodol* 2023 September 20; 13(4): 166-372



**EDITORIAL**

- 166 Importance of methodological considerations in documenting psychological trauma  
*Vyshka G, Elezi F, Mana T*

**OPINION REVIEW**

- 170 ChatGPT in action: Harnessing artificial intelligence potential and addressing ethical challenges in medicine, education, and scientific research  
*Jeyaraman M, Ramasubramanian S, Balaji S, Jeyaraman N, Nallakumarasamy A, Sharma S*

**REVIEW**

- 179 Compensated liver cirrhosis: Natural course and disease-modifying strategies  
*Kumar R, Kumar S, Prakash SS*
- 194 Telemedicine in inflammatory bowel diseases: A new brick in the medicine of the future?  
*Gravina AG, Pellegrino R, Durante T, Palladino G, D'Onofrio R, Mammone S, Arboreto G, Auletta S, Imperio G, Ventura A, Romeo M, Federico A*

**ORIGINAL ARTICLE****Basic Study**

- 210 Utilization of online systems to promote youth participation in research: A methodological study  
*Salem M, Pollack L, Zepeda A, Tebb KP*
- 223 Comprehensive analysis of cell-extracellular matrix protein Ras suppressor-1 in function and prognosis of gastrointestinal cancers  
*Xu Y, Hou YY, Wu Z, Fang ZX, Wu HT, Liu J*

**Retrospective Cohort Study**

- 238 Role of the phase angle in the prognosis of the cirrhotic patient: 15 years of follow-up  
*Pinto LP, Marroni CA, Czereminski J, Dahlem MLF, Carteri RB, Fernandes SA*

**Retrospective Study**

- 248 Association of carbon monoxide poisonings and carboxyhemoglobin levels with COVID-19 and clinical severity  
*Coskun A, Demirci B, Turkdogan KA*

**Observational Study**

- 259 External validation of the Moroccan Arabic version of the European Organization for Research and Treatment of Cancer colorectal (CR29) module: Monocentric study  
*Bachri H, Essangri H, El Bahaoui N, Benkabbou A, Mohsine R, Majbar AM, Souadka A*

- 272 Biliary fistula and late recurrence of liver hydatid cyst: Role of cysto-biliary communication: A prospective multicenter study

*Habeeb TAAM, Podda M, Tadic B, Shelat VG, Tokat Y, Abo Alsaad MI, Kalmoush AE, Nassar MS, Mustafa FM, Morsi Badawy MH, Sobhy Shaaban M, Mohamed TZ, El Sayed Henish MI, Elbelkasi H, Abdou Yassin M, Mostafa A, Ibrahim A, A-Abdelhady W, Elshahidy TM, Mansour MI, Moursi AM, Abdallah Zaitoun M, Abd-Allah ES, Abdelmonem Elsayed A, S Elsayed R, M Yehia A, Abdelghani A, Negm M, Abo-Alella HA, Elaidy MM*

### Prospective Study

- 287 Role of endoscopic ultrasound and endoscopic ultrasound-guided tissue acquisition in diagnosing hepatic focal lesions

*Okasha HH, Delsa H, Alsawaf A, Hashim AM, Khattab HM, Abdelfatah D, Abdellatef A, Albitar A*

### SYSTEMATIC REVIEWS

- 296 Post-COVID-19 cholangiopathy: Systematic review

*Rasheed MA, Ballotin VR, Bigarella LG, Soldara J*

- 323 Potential long-term neurological and gastrointestinal effects of COVID-19: A review of adult cohorts

*Sherif ZA, Deverapalli M, Challa SR, Martirosyan Z, Whitesell P, Pizuorno AM, Naqvi Z, Tulloch IK, Oskrochi G, Brim H, Ashktorab H*

### SCIENTOMETRICS

- 337 Physician-scientists or celebrities? Kardashian-index of gastroenterologists

*Ugonabo O, Malik SU, Akbar UA, Zamani Z, Frandah W*

- 345 Mapping research trends of transarterial chemoembolization for hepatocellular carcinoma from 2012 to 2021: A bibliometric analysis

*Zhang N, He XF, Niu XK*

### CASE REPORT

- 359 Clinical, imaging, arthroscopic, and histologic features of bilateral anteromedial meniscomfemoral ligament: A case report

*Luco JB, Di Memmo D, Gomez Sicre V, Nicolino TI, Costa-Paz M, Astoul J, Garcia-Mansilla I*

- 366 Sclerotic marginal zone lymphoma: A case report

*Moureiden Z, Tashkandi H, Hussaini MO*

**ABOUT COVER**

Peer Reviewer of *World Journal of Methodology*, Ahmad Ozair, MBBS, Postdoctoral Fellow, Miami Cancer Institute, Baptist Health South Florida, Miami, FL 33176, United States. [ahmad.ozair@baptisthealth.net](mailto:ahmad.ozair@baptisthealth.net)

**AIMS AND SCOPE**

The primary aim of *World Journal of Methodology* (WJM, *World J Methodol*) is to provide scholars and readers from various fields of methodology with a platform to publish high-quality basic and clinical research articles and communicate their research findings online.

WJM mainly publishes articles reporting research results obtained in the field of methodology and covering a wide range of topics including breath tests, cardiac imaging techniques, clinical laboratory techniques, diagnostic self-evaluation, cardiovascular diagnostic techniques, digestive system diagnostic techniques, endocrine diagnostic techniques, neurological diagnostic techniques, obstetrical and gynecological diagnostic techniques, ophthalmological diagnostic techniques, otological diagnostic techniques, radioisotope diagnostic techniques, respiratory system diagnostic techniques, surgical diagnostic techniques, *etc.*

**INDEXING/ABSTRACTING**

The WJM is now abstracted and indexed in PubMed, PubMed Central, Reference Citation Analysis, China National Knowledge Infrastructure, China Science and Technology Journal Database, and Superstar Journals Database.

**RESPONSIBLE EDITORS FOR THIS ISSUE**

Production Editor: Zi-Hang Xu, Production Department Director: Xu Guo, Editorial Office Director: Ji-Hong Lin.

**NAME OF JOURNAL**

*World Journal of Methodology*

**ISSN**

ISSN 2222-0682 (online)

**LAUNCH DATE**

September 26, 2011

**FREQUENCY**

Quarterly

**EDITORS-IN-CHIEF**

Timotius Ivan Hariyanto

**EDITORIAL BOARD MEMBERS**

<https://www.wjgnet.com/2222-0682/editorialboard.htm>

**PUBLICATION DATE**

September 20, 2023

**COPYRIGHT**

© 2023 Baishideng Publishing Group Inc

**INSTRUCTIONS TO AUTHORS**

<https://www.wjgnet.com/bpg/gerinfo/204>

**GUIDELINES FOR ETHICS DOCUMENTS**

<https://www.wjgnet.com/bpg/gerinfo/287>

**GUIDELINES FOR NON-NATIVE SPEAKERS OF ENGLISH**

<https://www.wjgnet.com/bpg/gerinfo/240>

**PUBLICATION ETHICS**

<https://www.wjgnet.com/bpg/gerinfo/288>

**PUBLICATION MISCONDUCT**

<https://www.wjgnet.com/bpg/gerinfo/208>

**ARTICLE PROCESSING CHARGE**

<https://www.wjgnet.com/bpg/gerinfo/242>

**STEPS FOR SUBMITTING MANUSCRIPTS**

<https://www.wjgnet.com/bpg/gerinfo/239>

**ONLINE SUBMISSION**

<https://www.f6publishing.com>



## Prospective Study

# Role of endoscopic ultrasound and endoscopic ultrasound-guided tissue acquisition in diagnosing hepatic focal lesions

Hussein Hassan Okasha, Hanane Delsa, Abdelmoneim Alsawaf, Ahmed Morad Hashim, Hani M Khattab, Dalia Abdelfatah, Abeer Abdellatef, Amr Albitar

**Specialty type:** Medical laboratory technology

### Provenance and peer review:

Invited article; Externally peer reviewed.

**Peer-review model:** Single blind

### Peer-review report's scientific quality classification

Grade A (Excellent): 0  
Grade B (Very good): 0  
Grade C (Good): 0  
Grade D (Fair): 0  
Grade E (Poor): 0

**P-Reviewer:** Gupta T, India;  
Treeprasertsuk S, Thailand

**Received:** June 9, 2023

**Peer-review started:** June 9, 2023

**First decision:** July 7, 2023

**Revised:** July 23, 2023

**Accepted:** August 29, 2023

**Article in press:** August 29, 2023

**Published online:** September 20, 2023



**Hussein Hassan Okasha, Ahmed Morad Hashim, Abeer Abdellatef, Amr Albitar**, Department of Internal Medicine, Division of Gastroenterology and Hepatology, Kasr Al-Aini School of Medicine, Cairo University, Cairo 11451, Egypt

**Hanane Delsa**, Department of Gastroenterology and Hepatology, Cheikh Khalifa International University Hospital, Mohammed VI University of Sciences and Health, Casablanca 82403, Morocco

**Hanane Delsa**, Research Unit, Mohammed VI Center for Research and Innovation, Rabat 10100, Morocco

**Abdelmoneim Alsawaf**, Department of Gastroenterology, Barnsley NHS Foundation Trust, Barnsley S75 2EP, United Kingdom

**Hani M Khattab**, Department of Pathology, Kasr Al-Aini School of Medicine, Cairo University, Cairo 11451, Egypt

**Dalia Abdelfatah**, Department of Cancer Epidemiology and Biostatistics, National Cancer Institute, Cairo University, Cairo 11451, Egypt

**Corresponding author:** Hussein Hassan Okasha, MD, Professor, Department of Internal Medicine, Division of Gastroenterology and Hepatology, Kasr Al-Aini School of Medicine, Cairo University, Kasr Al-Aini Street, Cairo 11451, Egypt. [okasha.hussein@gmail.com](mailto:okasha.hussein@gmail.com)

## Abstract

### BACKGROUND

Endoscopic ultrasonography (EUS) has become an established method in diagnostic and therapeutic procedures in gastroenterology; however, it has recently gained a growing role in hepatology.

### AIM

To evaluate the role of EUS features, strain elastography (SE), and EUS-tissue acquisition in diagnosing hepatic focal lesions (HFLs) that could affect further management.

### METHODS

This cross-sectional study included 215 patients with pancreatic, biliary, or



gastrointestinal malignancies referred for EUS examination. HFLs were identified in 43 patients (20%), and EUS-guided tissue acquisition was performed from these lesions.

## RESULTS

EUS features were highly sensitive (100%) but much less specific (57%) in diagnosing HFLs; the overall accuracy was 94%. Real-time elastography was also very sensitive (97%) but less specific (67%) in diagnosing HFLs; however, the overall accuracy was 92%. EUS tissue acquisition was extremely sensitive (100%) and specific (100%), with a 100% overall diagnostic accuracy.

## CONCLUSION

The diagnostic utility of EUS-guided tissue acquisition was extremely accurate in diagnosing HFLs. EUS characteristics and real-time SE accurately predicted the histological diagnosis of both benign and malignant HFLs.

**Key Words:** Endoscopic ultrasonography; Hepatic focal lesions; Fine needle aspiration; Fine needle biopsy; Elastography

©The Author(s) 2023. Published by Baishideng Publishing Group Inc. All rights reserved.

**Core Tip:** This cross-sectional study included 43 patients with hepatic focal lesions among 215 pancreatic, biliary, or gastrointestinal malignant lesions referred for Endoscopic ultrasonography (EUS) examination. EUS tissue acquisition was highly sensitive (100%) and specific (100%), with an overall diagnostic accuracy of 100%.

**Citation:** Okasha HH, Delsa H, Alsawaf A, Hashim AM, Khattab HM, Abdelfatah D, Abdellatif A, Albitar A. Role of endoscopic ultrasound and endoscopic ultrasound-guided tissue acquisition in diagnosing hepatic focal lesions. *World J Methodol* 2023; 13(4): 287-295

**URL:** <https://www.wjgnet.com/2222-0682/full/v13/i4/287.htm>

**DOI:** <https://dx.doi.org/10.5662/wjm.v13.i4.287>

## INTRODUCTION

Endoscopic ultrasonography (EUS) is one of the main tools used to evaluate the upper and distal parts of the lower gastrointestinal tract and to define pancreatic and hepatobiliary features. The utility of EUS in diagnosing and managing hepatic focal lesions (HFLs) has gained special concern nowadays due to the proximity of the scope to the liver, and its excellent spatial resolution enables real-time images and guided intervention[1-4].

Liver diseases are among the most common worldwide and manifest as diffuse liver diseases and focal hepatic lesions, ranging from benign to malignant. To make a definitive diagnosis of liver diseases, biochemical and imaging investigations and, in some instances, liver biopsies are typically used[2]. The application of EUS in diagnosing liver diseases is a promising technique and should be considered a first-line therapeutic option in selected cases[4].

EUS-guided diagnosis of focal liver lesions by endosonographic features and cytological and histopathological examination of biopsies obtained *via* fine needle aspiration/biopsy (EUS-FNA/FNB) has been shown to significantly improve the diagnosis of solid liver lesions compared to traditional imaging tools[1].

US and computed tomography (CT)-guided FNA/FNB of focal liver lesions are safe and provide high diagnostic accuracy; however, it is sometimes challenging to access subdiaphragmatic and posteriorly located lesions.

Compared to percutaneous and transjugular routes, EUS-FNA/FNB may have better accessibility and diagnostic yield and may be superior for a targeted approach to focal lesions. It provides higher-quality images and allows for more patient comfort[3]. However, there is limited data regarding the accuracy of EUS-guided biopsy of HFLs[5].

Elastography is a US-based imaging modality that provides information about tissue stiffness and can be considered a virtual biopsy. Several elastographic approaches have been developed, such as transient elastography, strain elastography (SE), histograms, and shear wave imaging, which include point shear wave elastography and 2D shear wave elastography[6].

This study evaluated the diagnostic utility of EUS sonographic features, SE, and EUS-FNA/FNB in differentiating benign from malignant liver lesions, including primary and metastatic lesions that may affect further management.

## MATERIALS AND METHODS

This cross-sectional study included 215 Egyptian patients who were referred to the internal medicine department, Kasr Al-Aini hospitals, Cairo University for EUS and EUS-FNA/FNB for an assessment of pancreatic or gastrointestinal tumors without or with HFLs detected by contrast abdominal CT or magnetic resonance imaging (MRI). After the EUS examination, 43 out of 215 (20%) patients had HFLs for which EUS-FNA/FNB was performed. All the required data is

collected from the hospital's medical record after ethical approval is obtained from our hospital's ethical committee.

Exclusion criteria include patients unfit for deep sedation and patients with bleeding disorders contraindicating EUS-FNA/FNB.

All patients were subjected to a thorough history taking, clinical examination, abdominal US, CT, or MRI abdomen, and routine laboratory investigations such as complete blood count, hepatic and renal function tests, and coagulation profile, in addition to virological tests for human immunodeficiency virus, hepatitis C virus, and hepatitis B virus and tumor markers including CA-19-9 and alpha-fetoproteins.

EUS and EUS-FNA/FNB were performed by a single endoscopist. It was conducted under deep sedation using a Pentax linear array echoendoscope type EG-3870UTK attached to a Hitachi ultrasound AVIUS machine. A detailed description of the primary tumor and the HFLs regarding their site, size, shape, and number was applied. Based on EUS features, we considered the mass as malignant if any one of the following criteria is present: (1) The presence of peripheral hypoechoic halo; and (2) The presence of mass effect as compression or interruption of the course of a blood vessel or a biliary radicle, or the presence of contour bulge.

Real-time SE scoring was done to all HFLs. We considered grades 1 and 2 as benign and grades 3 and 4 as malignant lesions. EUS-FNA was conducted with 22G Echotip needles from Cook Company; however, the FNB was conducted with 22G Acquire needles from Boston Scientific Company. All biopsies were done by high pressure technique and fanning, at least two passes, no Rapid On-Site evaluation (ROSE) was available in any of the cases. We have targeted the nearest mass to the Echoendoscope, with no intervening vessels along the needle tract and with the presence of a rim of normal liver tissue between the liver capsule and targeted mass to minimize bleeding. The material was spread over a glass slide and fixed by 95% alcohol, whereas formalin blocks were prepared and sent to a single experienced cytologist.

The gold standard of malignant lesions is the FNB as it has extremely high specificity, about 95%-100% in most articles in the literature. All benign-looking lesions were followed up with the disappearance of all cholangitis abscesses under antibiotic therapy, while the two benign liver nodules were constant in size over 6 mo.

The collected data from the 43 patients with HFLs was organized and statistically analyzed using appropriate methods.

## RESULTS

The average age of the patients examined was 56, the majority were male (74.42%), and the most common co-morbidities were diabetes mellitus (10 patients; 23.25%), systemic hypertension (8 patients; 18.6%), and ischemic heart disease (6 patients; 13.95%). Most of the HFLs were present in the left lobe of the liver (67.44%).

The cytopathological confirmed malignant lesions were found in 35 (81.4%) of patients, while benign lesions were found in 8 (18.6%) of patients (Table 1). The eight benign lesions were six cholangitis abscesses and two benign liver lesions, likely areas of focal fat depletion. All benign lesions were followed up with the disappearance of all cholangitic abscesses under antibiotic therapy, while the two benign liver nodules were constant in size over 6 mo. The other 35 malignant lesions were five primary hepatocellular carcinomas, one neuroendocrine tumor, and 29 metastatic liver lesions (Figure 1) from malignant pancreatic masses, as proved by cytopathological and histopathological examination after EUS-FNA/FNB (Figure 2A). The mean size was 23.47 mm × 39.19 mm, with an average number of needles passing 1.49 (0.51).

EUS-FNA/FNB was accurate in diagnosing HFLs with 100% sensitivity, specificity, and diagnostic accuracy.

EUS features provisionally diagnosed 38 patients (88.37%) with malignant lesions and five patients (11.63%) with benign ones (Table 2). Thus, 5 out of 8 benign lesions could be correctly diagnosed based on EUS features. On the other hand, 38 cases were reported with malignant lesions, while the actual number evident by histopathology was only 35; thus, three benign cases were incorrectly diagnosed as malignant lesions (Table 3).

Based on Real-Time elastography scoring, 5 patients were suggested to have benign lesions while 38 lesions were suggested to have malignant lesions. Real-time elastography (Figures 2B and 3) was very sensitive (97%) but less specific (67%) in the diagnosis of HFLs; however, the overall accuracy was 92% (Tables 4 and 5).

EUS-FNA needles were used in 20 patients while EUS-FNB were used in 23 patients. No complications were reported in the study. EUS-FNA was done in 20 patients while EUS-FNB was done in 23 patients.

## DISCUSSION

Percutaneous CT or US-guided biopsy is the classical diagnostic method for liver masses. However, it has shown some difficulties in diagnosing small liver lesions less than 2 cm, with common complications and many contraindications limiting its use[7,8].

EUS has been broadly used for identifying and managing GIT and pancreaticobiliary diseases[3]. It has become an excellent tool to confirm the pathological diagnosis in combination with EUS-FNA/FNB.

Compared to percutaneous liver biopsy (PC-LB), EUS-guided liver biopsy (ELB) is a new approach to liver parenchyma sampling that has shown promise for safety, patient comfort, and good tissue yield[9]. ELB also allows sampling from multiple sites in the liver, both in the right and left lobes[9,10].

Few studies have verified the efficacy and safety of ELB; however, the review of Sbeit reported a variable diagnostic yield for EUS-guided liver biopsy in focal liver lesions (91%-100%)[4].

**Table 1 Cytopathological diagnosis of hepatic focal lesions**

Variable	Total, <i>n</i> = 43	
	<i>n</i>	%
Cytopathological diagnosis		
Benign	8	18.60
Malignant	35	81.40
Inflammatory	8	18.60
Cholangitic abscess	6	13.94
Cirrhotic nodule	2	4.65
Primary	6	13.95
Hepatocellular carcinoma	5	11.63
Neuroendocrine tumor	1	2.32
Secondary	29	67.44

**Table 2 Endoscopic ultrasonography finding of patients with hepatic focal lesions**

Variable	Total, <i>n</i> = 43
No. of passes	1.49 (0.51)
Shortest diameter size in mm	19 ± 12.8/(3-67)
Longest diameter size in mm	26 ± 19.1/(4-109)
Diagnosis	
Benign	5 (11.63)
Malignant	38 (88.37)

Data are presented as *n* (%) or mean ± SD/(range).

**Table 3 Comparison between endoscopic ultrasonography diagnosis and histopathology results**

Variable	EUS, <i>n</i> = 43		Histopathology, <i>n</i> = 43	
	<i>n</i>	%	<i>n</i>	%
Benign	5	11.63	8	18.60
Malignant	38	88.37	35	81.40

EUS: Endoscopic ultrasonography.

**Table 4 Diagnostic utility of elastography in predicting benign and malignant hepatic focal lesions**

Elastography, <i>n</i> = 43	<i>n</i> (%)
Benign	
Grade 1	0
Grade 2	5 (11.6)
Malignant	38 (88.4)
Grade 3	10 (23.3)
Grade 4	28 (65.1)



**Table 5 Comparison between different endoscopic ultrasonography tools regarding their utility in diagnosis of hepatic focal lesions**

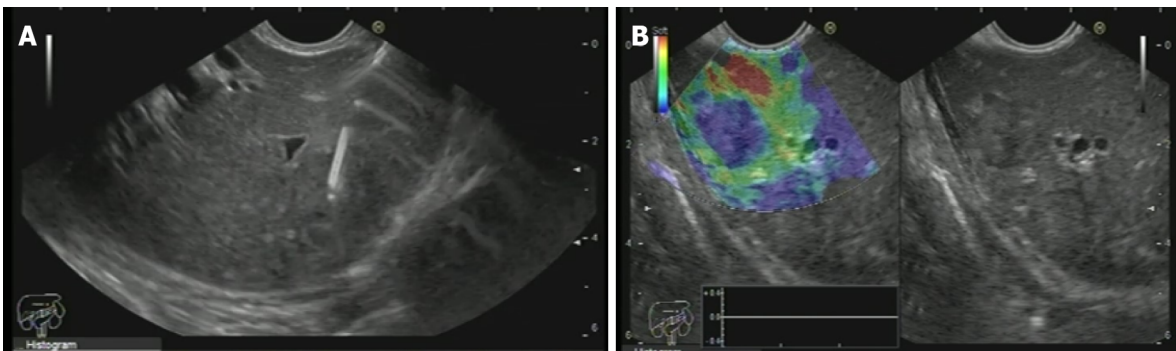
Tool	Sensitivity	Specificity	PPV	NPV	Overall accuracy
Elastography	97	67	94	80	92
EUS	100	57	94	100	94
FNA/FNB	100	100	100	100	100

EUS: Endoscopic ultrasonography; FNA/FNB: Fine needle aspiration/biopsy.



DOI: 10.5662/wjm.v13.i4.287 Copyright ©The Author(s) 2023.

**Figure 1 Multiple hepatic focal lesions due to liver metastasis.**

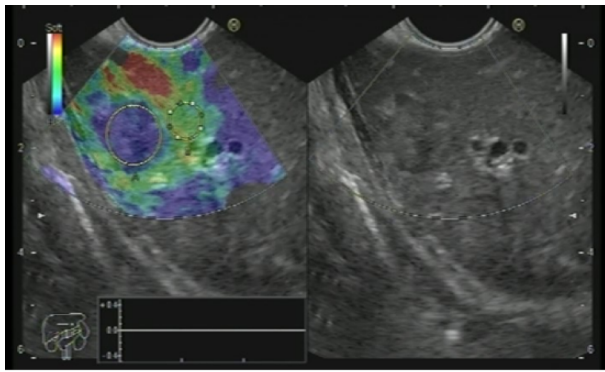


DOI: 10.5662/wjm.v13.i4.287 Copyright ©The Author(s) 2023.

**Figure 2 A metastatic focal hepatic mass.** A: Endoscopic ultrasound guided fine needle biopsy from hepatic focal lesion; B: A metastatic focal hepatic mass with grade 4 Elasticity score.

This study aimed to evaluate EUS and EUS-FNA/FNB's diagnostic efficacy in diagnosing liver lesions, whether benign or malignant, including primary and metastatic lesions.

In this study, EUS detected and sampled all HFLs, whereas 88.37% of patients had malignant lesions (liver metastasis) and 11.63% had benign ones. The mean elastographic strain ratio of the HFLs was 3.6 (0.7), and the mean size was 23.47 mm × 39.19 mm, with an average number of needles passing 1.49 (0.51). Finally, considering the cytopathological diagnosis of the biopsy, it proved malignant lesions in 81.4 percent of patients, while benign lesions were found in 18.6%. The eight benign lesions were six cholangitis abscesses and two benign-looking liver lesions. All benign-looking lesions were followed up with the disappearance of all cholangitis abscesses under antibiotic therapy, while the two benign liver nodules were constant in size over 6 mo. The other 35 malignant lesions were five primary hepatocellular carcinomas, one neuroendocrine tumor, and 29 liver metastatic lesions. This finding was consistent with Oh *et al* [11], who investigated the role of EUS-FNA in targeting right-sided liver masses and found that 39 (80.9%) of 47 patients were proven to have malignant lesions. The mean tumor size was 26 mm. The median number of needle passes was 3. On microscopic examination, tissue specimens obtained by EUS-FNA were determined to be adequate in 42 of 46 patients (91.3%). The pathological diagnosis was malignancy in 23 of 46 patients (50%), suspicious for malignancy in 6 patients (13%), atypical in 4 patients (8.7%), and negative for malignancy in 9 patients (19.6%).



DOI: 10.5662/wjm.v13.i4.287 Copyright ©The Author(s) 2023.

**Figure 3 A metastatic focal hepatic mass with high Strain ratio.**

Another study by Chon *et al*[12] discussed the role of ELB in diagnosing solid liver lesions. The study included 58 patients (35 males and 23 females) with a mean age ( $68.0 \pm 10.6$  years). The mean size of the mass was  $21.4 \pm 9.16$  mm  $\times$   $11.5 \pm 8.15$  mm. The biopsy target site was the left lobe in 39 patients, the right lobe in 16 patients, and the caudate lobe in 3 patients. The number of trans-gastric and trans-duodenal route procedures was 39 (67.2%) and 19 (32.8%), respectively. The mean needle pass number was  $2.6 \pm 0.8$ , ranging from 1-5 per lesion. The final diagnosis was performed in 52 cases out of 58; all were malignant, either HCC or metastatic.

Adler *et al*[13] performed a multicenter retrospective review of 200 patients, specifically looking at safety and performance when sampling solid lesions. They reported excellent diagnostic yield at 98.5%; however, 6.5% of the patients needed a repeat procedure at some point. No adverse events were identified in the population.

In our study, EUS features were highly sensitive (100%) and less specific (57%) in diagnosing HFL, with an overall accuracy of 94%. Real-time elastography was also highly sensitive (97%) and less specific (67%) for diagnosing HFL; overall accuracy was 92%. EUS tissue acquisition was extremely sensitive (100%) and specific (100%), with an overall diagnostic accuracy of 100%.

Similarly, in 2019, Chon *et al*[12] stated that the diagnostic accuracy for EUS-FNB was 89.7%, but both specimen adequacy for histology, and available immunohistochemistry stain were 91.4%. The sensitivity and specificity of EUS-FNB were 89.7% and 100%, respectively[12].

Two recent meta-analyses reported that ELB and PC-LB are comparable in terms of safety and diagnostic performance [14,15]; however, ELB was more cost-effective than PC-LB regarding lower costs per patient and higher quality-adjusted life years[15].

EUS has the advantage of sampling and evaluating both lobes of the liver and small liver lesions that may have been missed by other non-invasive imaging modalities[16]. This accurately depicts liver histology and potentially addresses concerns about sampling error[17].

A further advantage of ELB over PC-LB was that it permitted more straightforward access to the right and left regions of the liver, thereby reducing the variability in diagnosis. Furthermore, ELB provided a much shorter recovery period (around 4 h) than PC-LB (usually a minimum of 10 h)[18].

In the Oh study, there were no statistical differences in the diagnostic accuracy of ELB between right and left lobe sites (25/28, 89.3% *vs* 13/14, 92.9%,  $P = 0.86$ ), and none of the patients experienced procedure-related adverse events[18]. Similarly, no significant adverse events had been encountered in our study. Liver biopsy is very safe as liver is very near to the Echoendoscope. Also, if intrahepatic hematoma occurred, the blood will trickle to one of the portal or hepatic vessels, so the patient will bleed into its own circulation.

More recently, the meta-analysis by Zeng *et al*[15] suggests that the use of Acquire Franseen-tip needles may increase the ability to obtain more diagnostic samples than Sharkcore Fork-tip needles and that the use of FNB needles may be associated with a higher risk of adverse events than FNA needles[15].

Cholongitas *et al*[19] conducted a systematic review and meta-analysis of over 10000 percutaneous liver biopsies and found that an average of 7.5 core biopsy passes (CPT) and a target specimen length (TSL) of 17.7 mm were necessary for adequate pathological evaluation. However, when the biopsy was obtained through the transjugular route, adequacy was defined as 6.5 CPT and a TSL of 12 mm. While there is no established optimal definition of specimen adequacy for endoscopic ultrasound-guided liver biopsy (EUSLB), the American Association for the Study of Liver Diseases (AASLD) recommends a minimum of 11 CPTs as the definition of adequacy, regardless of the sampling route[19-22]. Additionally, the AASLD guideline suggests a TSL greater than 15 mm to define adequacy, with an ideal size of 30 mm. In this study, all routes of tissue sampling achieved at least 11 CPTs and a TSL greater than 15 mm. However, only EUSLB achieved the ideal TSL of 30 mm or more, which is considered optimal[23].

The study conducted by Ching-Companioni *et al*[24] demonstrated that endoscopic ultrasound-guided liver biopsy (EUS-LB) using a novel 19G FNB needle produced longer and less fragmented biopsy specimens compared to the standard 19G FNA needle. Furthermore, there was a reduced occurrence of specimen fragmentation during post-processing, and the yield of CPT was higher. These findings suggest that utilizing a 19G FNB needle represents an advancement over the conventional 19G FNA needle for EUS-LB[24].

In a prospective crossover randomized controlled trial, which is an appropriate model for assessing two types of tools, the researchers reached the conclusion that EUS-FNB is highly effective for solid liver masses. The newly developed antegrade-bevel needle demonstrated comparable efficacy and incidence of adverse events to the original reverse-bevel needle. However, the antegrade-bevel needles were able to obtain a larger amount of biopsy tissue compared to the reverse-bevel needles[25].

In a systematic review and meta-analysis examining the feasibility, safety, and usefulness of EUS-LB in patients undergoing parenchymal liver biopsy, the researchers found that the combined analysis of multiple studies demonstrated a significant diagnostic success rate of over 90%. This rate is similar to the diagnostic yield achieved by traditional PC-LB [26].

In another meta-analysis study, a comprehensive analysis was conducted on published studies examining the effectiveness and safety of EUS-LB for liver parenchymal diseases and focal liver lesions. The study assessed various outcomes including diagnostic yield, specimen adequacy, qualified specimens with the assistance of ROSE, and adverse events. The pooled analysis revealed that EUS-LB proved to be a highly effective and safe technique, with a successful pathological diagnosis rate of 95%, an adequate specimen rate of 84%, and an adverse events rate of 3%. Subgroup analyses were also performed, which indicated that Acquire Franseen-tip needles exhibited a higher diagnostic yield compared to SharkCore Fork-tip needles (99% *vs* 88%,  $P = 0.047$ ). Moreover, FNB needles showed a higher risk of adverse events in comparison to FNA needles (6% *vs* 1%,  $P = 0.028$ ). Interestingly, no significant differences were observed between 19 G and 22 G needles. Additionally, no significant disparities were identified between FNB and FNA needles in relation to our primary outcomes[15].

In order to improve the quality and accuracy of EUS, elastography has been developed, which allows the assessment of liver tissue firmness and the characterization of HFL. Real-time elastography showed high sensitivity (92.5%) and specificity (88.8%) with reasonable accuracy (88.6%) in a study by Sandulescu *et al*[27].

Innovations in needle technology and new approaches using ELB are in development, with the possibility of concomitant procedures such as EUS portal pressure gradient measurement, another emerging area in the field of endohepatology, in the coming years[8].

## CONCLUSION

The diagnostic utility of EUS-LB with FNA/FNB was perfect and the best diagnostic tool for the definitive diagnosis of the HFLs. Furthermore, EUS features during the procedures provided an excellent and accurate prediction of the histological diagnosis, determining whether the lesion was benign or malignant.

## ARTICLE HIGHLIGHTS

### Research background

Endoscopic ultrasonography (EUS) has become an established method in diagnostic and therapeutic procedures in gastroenterology; however, it has recently gained a growing role in hepatology.

### Research motivation

EUS tissue acquisition was highly sensitive (100%) and specific (100%), with an overall diagnostic accuracy of 100%.

### Research objectives

This study aimed to evaluate the role of EUS features, strain elastography (SE), and EUS-tissue acquisition in diagnosing hepatic focal lesions (HFLs) that could affect further management.

### Research methods

This cross-sectional study included 215 patients with pancreatic, biliary, or gastrointestinal malignancies referred for EUS examination. HFLs were identified in 43 patients (20%), and EUS-guided tissue acquisition was performed from these lesions.

### Research results

EUS features were highly sensitive (100%) but much less specific (57%) in diagnosing HFLs; the overall accuracy was 94%. Real-time elastography was also very sensitive (97%) but less specific (67%) in diagnosing HFLs; however, the overall accuracy was 92%. EUS tissue acquisition was extremely sensitive (100%) and specific (100%), with 100% overall diagnostic accuracy.

### Research conclusions

The diagnostic utility of EUS-guided tissue acquisition was extremely accurate in diagnosing HFLs. EUS characteristics and real-time SE accurately predicted the histological diagnosis of both benign and malignant HFLs.

## Research perspectives

This cross-sectional study included 43 patients with HFLs among 215 pancreatic, biliary, or gastrointestinal malignant lesions referred for EUS examination. EUS tissue acquisition was highly sensitive (100%) and specific (100%), with an overall diagnostic accuracy of 100%.

## ACKNOWLEDGEMENTS

We would like to acknowledge our great Kasr Al Aini Hospital and its workers, nurses, and staff members for all the support and help in this study and throughout our careers.

## FOOTNOTES

**Author contributions:** Okasha HH was the main EUS endoscopist; Delsa H and Alsawaf A collected the data; Abdellatef A revised and submitted the manuscript; Khattab HM was the main pathologist; Abdelfatah D wrote the statistics; Albitar A wrote the manuscript.

**Institutional review board statement:** The study was reviewed and approved by the Cairo University Institutional Review Board, 15/8/2018.

**Clinical trial registration statement:** This study is registered at Pan African Clinical Trials Registry.

**Informed consent statement:** All study participants or their legal guardian provided informed written consent about personal and medical data collection prior to study enrollment.

**Conflict-of-interest statement:** The authors report having no conflicts of interest. The authors alone are responsible for the content and writing of the paper.

**Data sharing statement:** Author(s) grant permission to BPG to publish manuscript-related documents (*e.g.*, peer review report, answers to reviewers, CrossCheck report, signed copyright license agreement, *etc*) at the same time that the manuscript is published online.

**CONSORT 2010 statement:** The authors have read the CONSORT 2010 Statement, and the manuscript was prepared and revised according to the CONSORT 2010 Statement.

**Open-Access:** This article is an open-access article that was selected by an in-house editor and fully peer-reviewed by external reviewers. It is distributed in accordance with the Creative Commons Attribution NonCommercial (CC BY-NC 4.0) license, which permits others to distribute, remix, adapt, build upon this work non-commercially, and license their derivative works on different terms, provided the original work is properly cited and the use is non-commercial. See: <https://creativecommons.org/licenses/by-nc/4.0/>

**Country/Territory of origin:** Egypt

**ORCID number:** Hussein Hassan Okasha 0000-0002-0815-1394; Hanane Delsa 0000-0001-7008-8552; Abdelmoneim Alsawaf 0000-0002-6583-2858; Ahmed Morad Hashim 0000-0001-9563-7618; Hani M Khattab 0000-0001-5145-6081; Dalia Abdelfatah 0000-0002-8598-7128; Abeer Abdellatef 0000-0001-9945-9767; Amr Albitar 0000-0002-7968-4382.

**S-Editor:** Fan JR

**L-Editor:** Filipodia

**P-Editor:** Fan JR

## REFERENCES

- 1 **Sbeit W**, Kadah A, Mari A, Mahamid M, Khoury T. A Comprehensive Narrative Review on the Evolving Role of Endoscopic Ultrasound in Focal Solid Liver Lesions Diagnosis and Management. *Diagnostics (Basel)* 2020; **10** [PMID: 32932960 DOI: 10.3390/diagnostics10090688]
- 2 **Johnson KD**, Laoveeravat P, Yee EU, Perisetti A, Thandassery RB, Tharian B. Endoscopic ultrasound guided liver biopsy: Recent evidence. *World J Gastrointest Endosc* 2020; **12**: 83-97 [PMID: 32218888 DOI: 10.4253/wjge.v12.i3.83]
- 3 **Facciorusso A**, Ramai D, Conti Bellocchi MC, Bernardoni L, Manfrin E, Muscatiello N, Crinò SF. Diagnostic Yield of Endoscopic Ultrasound-Guided Liver Biopsy in Comparison to Percutaneous Liver Biopsy: A Two-Center Experience. *Cancers (Basel)* 2021; **13** [PMID: 34205389 DOI: 10.3390/cancers13123062]
- 4 **Sbeit W**, Kadah A, Mahamid M, Pellicano R, Mari A, Khoury T. A State-of-the-Art Review on the Evolving Utility of Endoscopic Ultrasound in Liver Diseases Diagnosis. *Diagnostics (Basel)* 2020; **10** [PMID: 32717886 DOI: 10.3390/diagnostics10080512]
- 5 **Ichim VA**, Chira RI, Mircea PA, Nagy GA, Crisan D, Socaciu MA. Accuracy of endoscopic ultrasound-guided biopsy of focal liver lesions. *Med Ultrason* 2020; **22**: 20-25 [PMID: 32096783 DOI: 10.11152/mu-2078]
- 6 **Naganuma H**, Ishida H, Uno A, Nagai H, Kuroda H, Ogawa M. Diagnostic problems in two-dimensional shear wave elastography of the liver. *World J Radiol* 2020; **12**: 76-86 [PMID: 32549956 DOI: 10.4329/wjr.v12.i5.76]



- 7 **Campos S**, Poley JW, van Driel L, Bruno MJ. The role of EUS in diagnosis and treatment of liver disorders. *Endosc Int Open* 2019; **7**: E1262-E1275 [PMID: [31579708](#) DOI: [10.1055/a-0958-2183](#)]
- 8 **Rangwani S**, Ardeshtna DR, Mumtaz K, Kelly SG, Han SY, Krishna SG. Update on endoscopic ultrasound-guided liver biopsy. *World J Gastroenterol* 2022; **28**: 3586-3594 [PMID: [36161047](#) DOI: [10.3748/wjg.v28.i28.3586](#)]
- 9 **Sarkar A**, Dellatore P, Bhurwal A, Tyberg A, Shahid H, Minacapelli CD, Kahaleh M, Rustgi VK, Nieto J. Endoscopic Ultrasound-Guided Liver Biopsy in Clinical Practice. *Gastro Hep Advances* 2022; **1**: 936-941 [DOI: [10.1016/j.gastha.2022.07.007](#)]
- 10 **Ramai D**, Pannu V, Facciorusso A, Dhindsa B, Heaton J, Ofosu A, Chandan S, Maida M, Lattanzi B, Rodriguez E, Bhagat VH, Samanta J, Barakat MT. Advances in Endoscopic Ultrasound (EUS)-Guided Liver Biopsy. *Diagnostics (Basel)* 2023; **13** [PMID: [36832272](#) DOI: [10.3390/diagnostics13040784](#)]
- 11 **Oh D**, Seo DW, Hong SM, Song TJ, Park DH, Lee SS, Lee SK, Kim MH. Endoscopic ultrasound-guided fine-needle aspiration can target right liver mass. *Endosc Ultrasound* 2017; **6**: 109-115 [PMID: [28440236](#) DOI: [10.4103/2303-9027.204813](#)]
- 12 **Chon HK**, Yang HC, Choi KH, Kim TH. Endoscopic Ultrasound-Guided Liver Biopsy Using a Core Needle for Hepatic Solid Mass. *Clin Endosc* 2019; **52**: 340-346 [PMID: [31302987](#) DOI: [10.5946/ce.2018.175](#)]
- 13 **Adler DG**, Muthusamy VR, Ehrlich DS, Parasher G, Thosani NC, Chen A, Buscaglia JM, Appannagari A, Quintero E, Aslanian H, Taylor LJ, Siddiqui A. A multicenter evaluation of a new EUS core biopsy needle: Experience in 200 patients. *Endosc Ultrasound* 2019; **8**: 99-104 [PMID: [29623911](#) DOI: [10.4103/eus.eus\\_53\\_17](#)]
- 14 **Facciorusso A**, Crinò SF, Ramai D, Fabbri C, Mangiavillano B, Lisotti A, Muscatiello N, Cotsoglou C, Fusaroli P. Diagnostic yield of endoscopic ultrasound-guided liver biopsy in comparison to percutaneous liver biopsy: a systematic review and meta-analysis. *Expert Rev Gastroenterol Hepatol* 2022; **16**: 51-57 [PMID: [34918578](#) DOI: [10.1080/17474124.2022.2020645](#)]
- 15 **Zeng K**, Jiang Z, Yang J, Chen K, Lu Q. Role of endoscopic ultrasound-guided liver biopsy: a meta-analysis. *Scand J Gastroenterol* 2022; **57**: 545-557 [PMID: [35049405](#) DOI: [10.1080/00365521.2021.2025420](#)]
- 16 **Okasha HH**, Wifi MN, Awad A, Abdelfatah Y, Abdelfatah D, El-Sawy SS, Alzamzamy A, Abou-Elenin S, Abou-Elmagd A, ElHusseiny R, Wahba M, El-Feki MA, Pawlak KM. Role of EUS in detection of liver metastasis not seen by computed tomography or magnetic resonance imaging during staging of pancreatic, gastrointestinal, and thoracic malignancies. *Endosc Ultrasound* 2021; **10**: 344-354 [PMID: [34558421](#) DOI: [10.4103/EUS-D-20-00178](#)]
- 17 **Stavropoulos SN**, Im GY, Jlayer Z, Harris MD, Pitea TC, Turi GK, Malet PF, Friedel DM, Grendell JH. High yield of same-session EUS-guided liver biopsy by 19-gauge FNA needle in patients undergoing EUS to exclude biliary obstruction. *Gastrointest Endosc* 2012; **75**: 310-318 [PMID: [22248599](#) DOI: [10.1016/j.gie.2011.09.043](#)]
- 18 **Shah AR**, Al-Hanayneh M, Chowdhry M, Bilal M, Singh S. Endoscopic ultrasound guided liver biopsy for parenchymal liver disease. *World J Hepatol* 2019; **11**: 335-343 [PMID: [31114638](#) DOI: [10.4254/wj.h.v11.i4.335](#)]
- 19 **Cholongitas E**, Senzolo M, Standish R, Marelli L, Quaglia A, Patch D, Dhillon AP, Burroughs AK. A systematic review of the quality of liver biopsy specimens. *Am J Clin Pathol* 2006; **125**: 710-721 [PMID: [16707372](#) DOI: [10.1309/W3XC-NT4H-KFBN-2G0B](#)]
- 20 **Kalambokis G**, Manousou P, Vibhakorn S, Marelli L, Cholongitas E, Senzolo M, Patch D, Burroughs AK. Transjugular liver biopsy--indications, adequacy, quality of specimens, and complications--a systematic review. *J Hepatol* 2007; **47**: 284-294 [PMID: [17561303](#) DOI: [10.1016/j.jhep.2007.05.001](#)]
- 21 **Rockey DC**, Caldwell SH, Goodman ZD, Nelson RC, Smith AD; American Association for the Study of Liver Diseases. Liver biopsy. *Hepatology* 2009; **49**: 1017-1044 [PMID: [19243014](#) DOI: [10.1002/hep.22742](#)]
- 22 **Mok SRS**, Diehl DL. The Role of EUS in Liver Biopsy. *Curr Gastroenterol Rep* 2019; **21**: 6 [PMID: [30706151](#) DOI: [10.1007/s11894-019-0675-8](#)]
- 23 **McCarty TR**, Bazarbashi AN, Njei B, Ryou M, Aslanian HR, Muniraj T. Endoscopic Ultrasound-Guided, Percutaneous, and Transjugular Liver Biopsy: A Comparative Systematic Review and Meta-Analysis. *Clin Endosc* 2020; **53**: 583-593 [PMID: [33027584](#) DOI: [10.5946/ce.2019.211](#)]
- 24 **Ching-Companioni RA**, Diehl DL, Johal AS, Confer BD, Khara HS. 19 G aspiration needle versus 19 G core biopsy needle for endoscopic ultrasound-guided liver biopsy: a prospective randomized trial. *Endoscopy* 2019; **51**: 1059-1065 [PMID: [31342474](#) DOI: [10.1055/a-0956-6922](#)]
- 25 **Kongkam P**, Nalinthassanai N, Prueksapanich P, Sanpavat A, Cañones AR, Luangsukrerk T, Angsuwatcharakon P, Ridditid W, Kullavanijaya P, Treeprasertsuk S, Rerknimitr R. A comparison of the antegrade core trap and reverse bevel needles for EUS-guided fine-needle biopsy sampling of liver mass: a prospective randomized cross over study. *HPB (Oxford)* 2022; **24**: 797-805 [PMID: [34794898](#) DOI: [10.1016/j.hpb.2021.10.009](#)]
- 26 **Baran B**, Kale S, Patil P, Kannadath B, Ramireddy S, Badillo R, DaVee RT, Thosani N. Endoscopic ultrasound-guided parenchymal liver biopsy: a systematic review and meta-analysis. *Surg Endosc* 2021; **35**: 5546-5557 [PMID: [33052529](#) DOI: [10.1007/s00464-020-08053-x](#)]
- 27 **Sandulescu L**, Padureanu V, Dumitrescu C, Braia N, Streba CT, Gheonea DI, Cazacu S, Ciurea T, Rogoveanu I, Saftoiu A. A pilot study of real time elastography in the differentiation of focal liver lesions. *Curr Health Sci J* 2012; **38**: 32-35 [PMID: [24778839](#)]



Published by **Baishideng Publishing Group Inc**  
7041 Koll Center Parkway, Suite 160, Pleasanton, CA 94566, USA

**Telephone:** +1-925-3991568

**E-mail:** [bpgoffice@wjgnet.com](mailto:bpgoffice@wjgnet.com)

**Help Desk:** <https://www.f6publishing.com/helpdesk>

<https://www.wjgnet.com>

