

World Journal of *Clinical Cases*

World J Clin Cases 2023 June 26; 11(18): 4210-4457



REVIEW

- 4210 Should gastroenterologists prescribe cannabis? The highs, the lows and the unknowns
Samuel S, Michael M, Tadros M

MINIREVIEWS

- 4231 Application of artificial intelligence in trauma orthopedics: Limitation and prospects
Salimi M, Parry JA, Shahrokhi R, Mosalamiaghili S
- 4241 Weight loss maintenance after bariatric surgery
Cho YH, Lee Y, Choi JI, Lee SR, Lee SY
- 4251 Bicuspid aortic valve with associated aortopathy, significant left ventricular hypertrophy or concomitant hypertrophic cardiomyopathy: A diagnostic and therapeutic challenge
Sopek Merkaš I, Lakušić N, Predrijevac M, Štambuk K, Hrabak Paar M
- 4258 Application experience and research progress of different emerging technologies in plastic surgery
Yang B, Yang L, Huang WL, Zhou QZ, He J, Zhao X

ORIGINAL ARTICLE

Case Control Study

- 4267 Multimodal integrated intervention for children with attention-deficit/hyperactivity disorder
Lv YB, Cheng W, Wang MH, Wang XM, Hu YL, Lv LQ

Retrospective Study

- 4277 Portal vein computed tomography imaging characteristics and their relationship with bleeding risk in patients with liver cirrhosis undergoing interventional therapy
Song XJ, Liu JL, Jia SY, Zhang K

Observational Study

- 4287 Wrist-ankle acupuncture combined with pain nursing for the treatment of urinary calculi with acute pain
Wu LM, Liu Q, Yin XH, Yang LP, Yuan J, Zhang XQ, Wang YL

CASE REPORT

- 4295 Coexistence of diffuse large B-cell lymphoma, acute myeloid leukemia, and untreated lymphoplasmacytic lymphoma/waldenström macroglobulinemia in a same patient: A case report
Zhang LB, Zhang L, Xin HL, Wang Y, Bao HY, Meng QQ, Jiang SY, Han X, Chen WR, Wang JN, Shi XF
- 4306 Collagen fleece (Tachosil®) for treating testis torsion: A case report
Kim KM, Kim JH

- 4313** Morphological features and endovascular repair for type B multichanneled aortic dissection: A case report
Lu WF, Chen G, Wang LX
- 4318** Hepatic inflammatory myofibroblastic tumor: A case report
Tong M, Zhang BC, Jia FY, Wang J, Liu JH
- 4326** Endometriosis of the lung: A case report and review of literature
Yao J, Zheng H, Nie H, Li CF, Zhang W, Wang JJ
- 4334** Delayed dislocation of the radial head associated with malunion of distal radial fracture: A case report
Kim KB, Wang SI
- 4341** Synchronous endometrial and ovarian cancer: A case report
Žilovič D, Čiurlienė R, Šidlovská E, Vaicekauskaitė I, Sabaliauskaitė R, Jarmalaitė S
- 4350** Nivolumab-induced tumour-like gastritis: A case report
Cijauskaite E, Kazenaite E, Strainiene S, Sadauskaite G, Kurlinkus B
- 4360** Solitary thyroid gland metastasis from rectal cancer: A case report and review of the literature
Chen Y, Kang QS, Zheng Y, Li FB
- 4368** Anesthesia for extracorporeal membrane oxygenation-assisted thoracoscopic lower lobe subsegmental resection in a patient with a single left lung: A case report
Wang XF, Li ZY, Chen L, Chen LX, Xie F, Luo HQ
- 4377** Indium chloride bone marrow scintigraphy for hepatic myelolipoma: A case report
Sato A, Saito K, Abe K, Sugimoto K, Nagao T, Sukeda A, Yunaiyama D
- 4384** Fibromatosis-like metaplastic carcinoma of the breast: Two case reports
Bao WY, Zhou JH, Luo Y, Lu Y
- 4392** Perforating and ophthalmic artery variants from the anterior cerebral artery: Two case reports
Mo ZX, Li W, Wang DF
- 4397** Diagnostic use of superb microvascular imaging in evaluating septic arthritis of the manubriosternal joint: A case report
Seskute G, Kausaite D, Chalkovskaja A, Bulotaite E, Butrimiene I
- 4406** Primary prostate Burkitt's lymphoma resected with holmium laser enucleation of the prostate: A rare case report
Wu YF, Li X, Ma J, Ma DY, Zeng XM, Yu QW, Chen WG
- 4412** Pancreatitis, panniculitis and polyarthritides syndrome: A case report
Pichler H, Stumpner T, Schiller D, Bischofreiter M, Ortmaier R
- 4419** Acute neck tendonitis with dyspnea: A case report
Wu H, Liu W, Mi L, Liu Q

- 4425** Next-generation sequencing technology for the diagnosis of *Pneumocystis* pneumonia in an immunocompetent female: A case report
Huang JJ, Zhang SS, Liu ML, Yang EY, Pan Y, Wu J
- 4433** Superior laryngeal nerve block for treatment of throat pain and cough following laryngeal herpes zoster: A case report
Oh J, Park Y, Choi J, Jeon Y
- 4438** Removal of unexpected schwannoma with superficial parotidectomy using modified-Blair incision and superficial musculoaponeurotic system folding: A case report
Nam HJ, Choi HJ, Byeon JY, Wee SY
- 4446** Simultaneously metastatic cholangiocarcinoma and small intestine cancer from breast cancer misdiagnosed as primary cholangiocarcinoma: A case report
Jiao X, Zhai MM, Xing FZ, Wang XL

LETTER TO THE EDITOR

- 4454** Erroneous presentation of respiratory-hemodynamic disturbances and postsurgical inflammatory responses in patients having undergone abdominal cavity cancer surgery
Idrissov KS, Mynbaev OA

ABOUT COVER

Editorial Board Member of *World Journal of Clinical Cases*, Guoping Zheng, MD, PhD, Associate Professor, Faculty of Medicine and Health, Sydney Medical School-Westmead Clinical School, The University of Sydney, Sydney 2145, Australia. guoping.zheng@sydney.edu.au

AIMS AND SCOPE

The primary aim of *World Journal of Clinical Cases* (WJCC, *World J Clin Cases*) is to provide scholars and readers from various fields of clinical medicine with a platform to publish high-quality clinical research articles and communicate their research findings online.

WJCC mainly publishes articles reporting research results and findings obtained in the field of clinical medicine and covering a wide range of topics, including case control studies, retrospective cohort studies, retrospective studies, clinical trials studies, observational studies, prospective studies, randomized controlled trials, randomized clinical trials, systematic reviews, meta-analysis, and case reports.

INDEXING/ABSTRACTING

The WJCC is now abstracted and indexed in Science Citation Index Expanded (SCIE, also known as SciSearch®), Journal Citation Reports/Science Edition, Current Contents®/Clinical Medicine, PubMed, PubMed Central, Reference Citation Analysis, China National Knowledge Infrastructure, China Science and Technology Journal Database, and Superstar Journals Database. The 2022 Edition of Journal Citation Reports® cites the 2021 impact factor (IF) for WJCC as 1.534; IF without journal self cites: 1.491; 5-year IF: 1.599; Journal Citation Indicator: 0.28; Ranking: 135 among 172 journals in medicine, general and internal; and Quartile category: Q4.

RESPONSIBLE EDITORS FOR THIS ISSUE

Production Editor: *Ying-Yi Yuan*; Production Department Director: *Xu Guo*; Editorial Office Director: *Jin-Lei Wang*.

NAME OF JOURNAL

World Journal of Clinical Cases

ISSN

ISSN 2307-8960 (online)

LAUNCH DATE

April 16, 2013

FREQUENCY

Thrice Monthly

EDITORS-IN-CHIEF

Bao-Gan Peng, Jerzy Tadeusz Chudek, George Kontogeorgos, Maurizio Serati, Ja Hyeon Ku

EDITORIAL BOARD MEMBERS

<https://www.wjgnet.com/2307-8960/editorialboard.htm>

PUBLICATION DATE

June 26, 2023

COPYRIGHT

© 2023 Baishideng Publishing Group Inc

INSTRUCTIONS TO AUTHORS

<https://www.wjgnet.com/bpg/gerinfo/204>

GUIDELINES FOR ETHICS DOCUMENTS

<https://www.wjgnet.com/bpg/GerInfo/287>

GUIDELINES FOR NON-NATIVE SPEAKERS OF ENGLISH

<https://www.wjgnet.com/bpg/gerinfo/240>

PUBLICATION ETHICS

<https://www.wjgnet.com/bpg/GerInfo/288>

PUBLICATION MISCONDUCT

<https://www.wjgnet.com/bpg/gerinfo/208>

ARTICLE PROCESSING CHARGE

<https://www.wjgnet.com/bpg/gerinfo/242>

STEPS FOR SUBMITTING MANUSCRIPTS

<https://www.wjgnet.com/bpg/GerInfo/239>

ONLINE SUBMISSION

<https://www.f6publishing.com>



Bicuspid aortic valve with associated aortopathy, significant left ventricular hypertrophy or concomitant hypertrophic cardiomyopathy: A diagnostic and therapeutic challenge

Ivana Sopek Merkaš, Nenad Lakušić, Mladen Predrijevac, Krešimir Štambuk, Maja Hrabak Paar

Specialty type: Cardiac and cardiovascular systems

Provenance and peer review: Invited article; Externally peer reviewed.

Peer-review model: Single blind

Peer-review report's scientific quality classification

Grade A (Excellent): 0
Grade B (Very good): B, B
Grade C (Good): 0
Grade D (Fair): 0
Grade E (Poor): 0

P-Reviewer: Chauhan S, United States; Gupta P, United States

Received: March 26, 2023

Peer-review started: March 26, 2023

First decision: May 12, 2023

Revised: May 19, 2023

Accepted: May 24, 2023

Article in press: May 24, 2023

Published online: June 26, 2023



Ivana Sopek Merkaš, Nenad Lakušić, Department of Cardiology, Special Hospital for Medical Rehabilitation Krapinske Toplice, Krapinske Toplice 49217, Croatia

Nenad Lakušić, Krešimir Štambuk, Department of Clinical Medicine, Faculty of Dental Medicine and Health Osijek, J. J. Strossmayer University of Osijek, Osijek 31000, Croatia

Nenad Lakušić, Department of Internal Medicine, Family Medicine and History of Medicine, Faculty of Medicine Osijek, J. J. Strossmayer University of Osijek, Osijek 31000, Croatia

Mladen Predrijevac, Department of Cardiovascular Surgery, Magdalena Clinic for Cardiovascular Diseases, Krapinske Toplice 49217, Croatia

Krešimir Štambuk, Department of Cardiology, Magdalena Clinic for Cardiovascular Diseases, Krapinske Toplice 49217, Croatia

Maja Hrabak Paar, Department of Diagnostic and Interventional Radiology, University Hospital Centre Zagreb, Zagreb 10000, Croatia

Maja Hrabak Paar, School of Medicine, University of Zagreb, Zagreb 10000, Croatia

Corresponding author: Ivana Sopek Merkaš, MD, Doctor, Department of Cardiology, Special Hospital for Medical Rehabilitation Krapinske Toplice, Gajeva 2, Krapinske Toplice 49217, Croatia. ivana.sopek@sbkt.hr

Abstract

Due to its prevalence of 0.5% to 2% in the general population, with a 75% predominance among men, bicuspid aortic valve is the most common congenital heart defect. It is frequently accompanied by other cardiac congenital anomalies, and clinical presentation can vary significantly, with stenosis being the most common manifestation, often resulting in mild to moderate concentric hypertrophy of the left ventricle. Echocardiography is the primary diagnostic modality utilized for establishing the diagnosis, and it is often the sole diagnostic tool relied upon by clinicians. However, due to the heterogeneous clinical presentation and possible associated anomalies (which are often overlooked in clinical practice), it is necessary to employ various diagnostic methods and persist in finding the accurate diagnosis if multiple inconsistencies exist. By employing this approach, we can effectively manage these patients and provide them with appropriate

treatment. Through a clinical case from our practice, we provide an overview of the literature on bicuspid aortic valve with aortopathy and the possible association with hypertrophic cardiomyopathy, diagnostic methods, and treatment options. This review article highlights the critical significance of achieving an accurate diagnosis in patients with bicuspid aortic valve and significant left ventricular hypertrophy. It is crucial to exclude other possible causes of left ventricular outflow tract obstruction, such as sub- or supra-aortic obstructions, and hypertrophic cardiomyopathy.

Key Words: Bicuspid aortic valve; Left ventricular hypertrophy; Left ventricular tract obstruction; Hypertrophic cardiomyopathy; Aortopathy; Multimodal imaging

©The Author(s) 2023. Published by Baishideng Publishing Group Inc. All rights reserved.

Core Tip: Bicuspid aortic valve accompanied by significant left ventricular hypertrophy, with echocardiographic parameters suggesting possible obstruction of the left ventricular output tract, requires additional diagnostic workup to exclude obstruction other than at the aortic valve level, as well as possible associated hypertrophic cardiomyopathy. A multidisciplinary approach in the heart team and the utilization of multimodal imaging are imperative for the accurate diagnosis and appropriate management of such patients.

Citation: Sopek Merkaš I, Lakušić N, Predrijevac M, Štambuk K, Hrabak Paar M. Bicuspid aortic valve with associated aortopathy, significant left ventricular hypertrophy or concomitant hypertrophic cardiomyopathy: A diagnostic and therapeutic challenge. *World J Clin Cases* 2023; 11(18): 4251-4257

URL: <https://www.wjgnet.com/2307-8960/full/v11/i18/4251.htm>

DOI: <https://dx.doi.org/10.12998/wjcc.v11.i18.4251>

INTRODUCTION

Bicuspid aortic valve (BAV) is the most common congenital heart defect with prevalence of 0.5% to 2% in the general population, and 75% predominance among men[1]. It is often associated with other cardiac anomalies such as ventricular septal defect, patent ductus arteriosus, coarctation of the aorta, and the most frequent associated finding is dilation of the proximal ascending aorta[2]. The clinical presentation of patients with BAV can significantly vary from significant stenosis development already in childhood to milder degenerative changes and dysfunction in old age[2]. BAV is more prone to accelerated degeneration over time so the most common clinical presentation is in the form of stenosis with varying degree of insufficiency and typically results in mild to moderate concentric hypertrophy of the left ventricle[1,2]. In patients with symptomatic BAV, the treatment options are surgical or transcatheter aortic valve replacement (TAVR)[3], and depending on the diameter of the ascending aorta (> 45-55 mm) and associated comorbidities, replacement of the ascending aorta is recommended [4].

Hypertrophic cardiomyopathy (HCM) is the most common inherited cardiomyopathy, with a prevalence of 1 in every 500 individuals[5]. It is defined as a primary disorder of the heart muscle characterized by disproportionate asymmetric (in 95% of cases) or less commonly symmetric hypertrophy of the left ventricle (LV), without a clear cause to explain the observed hypertrophy (such as arterial hypertension, aortic stenosis, and others)[6]. HCM is mostly caused by autosomal dominant mutations in genes that encode sarcomere proteins (up to 60%) which control heart muscle growth and function[6]. Hypertrophy can also be caused by other genetic disorders such as neuromuscular diseases, chromosomal abnormalities, and genetic syndromes. These disorders may affect the myocardium and lead to abnormal ventricular hypertrophy or other structural abnormalities that can impede cardiac function[6]. Accurate diagnosis of the underlying etiology of hypertrophy is crucial for devising an appropriate therapeutic strategy and achieving optimal outcomes[6]. The disease is typically diagnosed in middle-aged and older adults between the third and fifth decade of life[7].

The onset of disease symptoms is attributed to diastolic dysfunction of the LV, which presents as fatigue, dyspnea on exertion, atypical chest pain, palpitations, and syncope. The symptoms and treatment of HCM depend on the presence of an obstructive gradient in the left ventricular outflow tract (LVOT). Asymptomatic patients without LVOT obstruction do not require active treatment, but they should undergo regular echocardiographic monitoring at one-year intervals[8]. The treatment options for symptomatic patients with HCM and obstructive gradient include medication such as non-vasodilating beta-blockers, verapamil, disopyramide, and more recently, mavacamten[9], while interventional/surgical options include surgical septal myectomy (Morrow's operation) or

percutaneous alcohol septal ablation. Dual-chamber pacing has not shown convincing benefits in treatment[8].

Coexistence of BAV and HCM has been reported with a prevalence of about 1%[10-14], however, its true prevalence remains unknown. The concomitance of BAV and severe left ventricular hypertrophy (LVH) can present a significant diagnostic and therapeutic challenge in everyday clinical practice.

CLINICAL PRESENTATION

The clinical presentation of patients with BAV and concomitant HCM can vary widely. Some patients may remain asymptomatic, while others may experience symptoms such as chest pain, shortness of breath, palpitations, or syncope. These symptoms may be related to the aortic valve stenosis or regurgitation, or they may be related to the HCM. In some cases, the LVH in patients with BAV and HCM can be so severe that it obstructs the LVOT, leading to symptoms of heart failure, such as fatigue, edema, and dyspnea on exertion[12,15].

In case from clinical practice, a 39-year-old female patient who had previously (5 years before) been diagnosed with BAV presented to a cardiologist with symptoms consistent with heart failure with preserved ejection fraction. These symptoms included exertional intolerance, rapid fatigue, and occasional lower extremity edema. Upon evaluation, the patient's N-terminal pro-B-type natriuretic peptide (NTproBNP) levels were found to be elevated, and there was LVH and left ventricular "strain" on electrocardiogram (Figure 1).

IMAGING EXAMINATIONS WITH MULTIDISCIPLINARY APPROACH

Transthoracic echocardiography (TTE) is the primary diagnostic modality utilized in the detection and longitudinal follow-up of patients with BAV or HCM. However, in cases where uncertainties or associated anomalies are suspected, additional diagnostic methods such as transesophageal echocardiography (TEE), magnetic resonance imaging (MRI), or computed tomography (CT) may be employed for diagnosing.

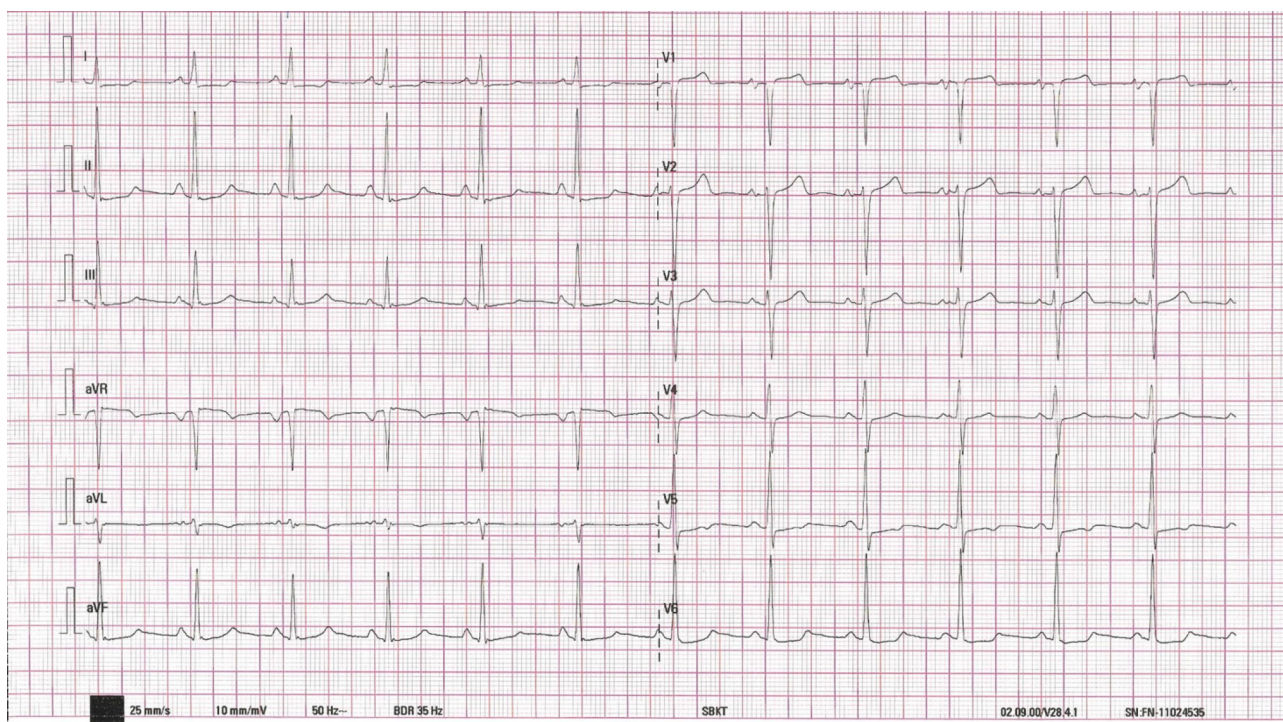
In this case, the TTE revealed a very high peak pressure gradient (up to 93 mmHg) (Figure 2A, Video 1) across the calcified BAV with mildly reduced orifice area (1.9 cm²) (Figure 2B, Video 1), and measured significant LVH (intraventricular septum 16-18 mm) (Figure 2C, Video 1), without typical dagger-shaped morphology on continuous Doppler at the level of the valve, and no systolic anterior motion. The peak gradient (PG) across the LVOT on pulse Doppler was 12 mmHg (Figure 2D), increasing to 35 mmHg with Valsalva maneuver. It became imperative to ascertain whether the obstruction was solely attributable to the altered valve, or if there were additional sub- or supra-aortic obstruction, and in combination with significant hypertrophy indicative of hypertrophic cardiomyopathy.

Next step was TEE, which confirmed the findings of the TTE. In order to rule out any associated anomalies, a CT angiography and aortography were conducted, which ruled out obstructive coronary artery disease and revealed the presence of a fusiform aneurysm in the ascending aorta measuring up to 45 mm, in addition to the previously identified BAV. Cardiac MRI confirmed the presence of BAV with clear obstruction at the valve level (Figure 3A) and LVH up to 16 mm (Figure 3B), with no indications of HCM, including no evidence of late gadolinium enhancement, and only mild diffuse fibrosis observed *via* borderline higher T1 values of the myocardium, with myocardial thickness appearing normal.

The diagnostic process for these patients is crucial and requires a multidisciplinary approach. A team of cardiologist, cardiac surgeon, and radiologist need to collaborate in order to evaluate the patient's condition and determine the appropriate diagnostic methods for establishing an accurate diagnosis.

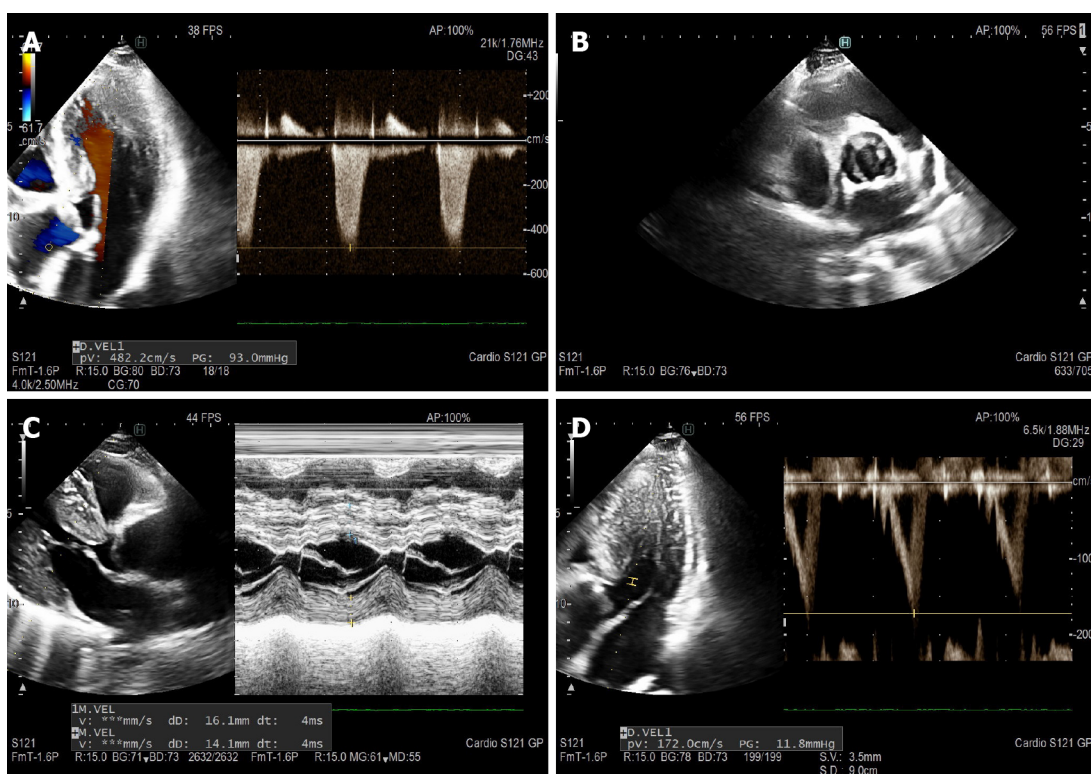
DIFFERENTIAL DIAGNOSIS AND TREATMENT

In patients with significant hypertrophy of LV and high doppler gradient localized on the aortic valve and in the LVOT, although bicuspid aortic valve and stenosis are known, it is important to exclude other possible causes of LVOT obstruction, possible at sub- or supra-aortic level, and such as hypertrophic cardiomyopathy. It is a particular challenge to make a diagnosis when the patient has certain elements that do not completely fit together. Except TTE and TEE examinations and their characteristics (*e.g.*, systolic anterior movement, "dagger"-shape Doppler), additional imaging like cardiac MRI has a key role in establishing a diagnosis. Making the right diagnosis is crucial because depending on the diagnosis, there are many different treatment options (valve replacement – BAV without HCM, myectomy and valve replacement – stenotic BAV + HCM, alcohol septal ablation and later valve replacement – obstructive HCM with preserved BAV function). The multidisciplinary team recommended in the presented case a surgical procedure that included the implantation of a mechanical aortic valve, along with resection and reconstruction of the ascending aorta using a straight graft (Video 2). A



DOI: 10.12998/wjcc.v11.i18.4251 Copyright ©The Author(s) 2023.

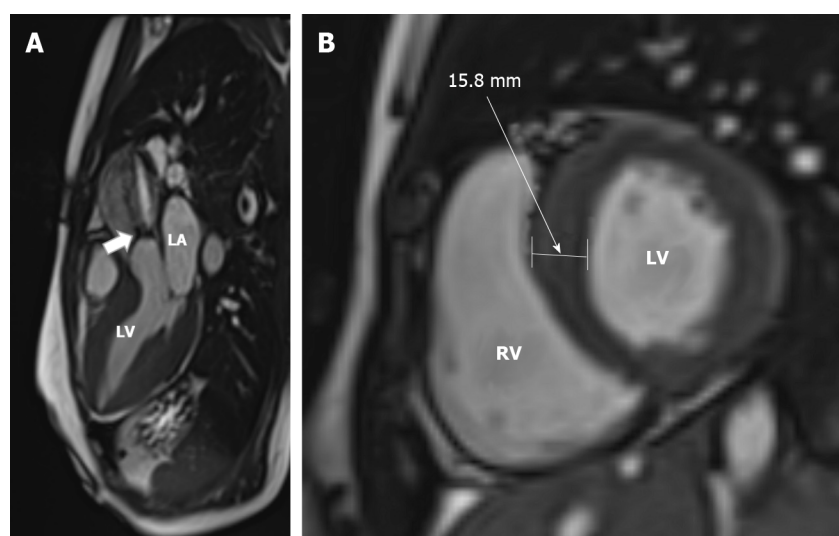
Figure 1 Electrocardiogram.



DOI: 10.12998/wjcc.v11.i18.4251 Copyright ©The Author(s) 2023.

Figure 2 Preoperative ECHO images. A: Aortic gradient peak gradient 93 mmHg; B: Parasternal short axis - valve with calcification; C: M- mode parasternal long axis; D: Left ventricular outflow tract doppler 12 mmHg.

potentially useful fact for differential diagnosis in this case is that the patient has an identical twin sibling who underwent a TTE and had normal findings.



DOI: 10.12998/wjcc.v11.i18.4251 Copyright ©The Author(s) 2023.

Figure 3 Cardiac magnetic resonance imaging was acquired on a 1.5T scanner. A: Systolic jet of aortic stenosis (arrow) can be observed on a 3-chamber view cine steady-state free precession image; B: The left ventricular myocardium was hypertrophic with a 15.8-mm-thick interventricular septum on a short-axis SSFP enddiastolic image. LA: Left atrium; LV: Left ventricle; RV: Right ventricle; LV: Left ventricle.

The choice of treatment will depend on individual patient characteristics and severity of the condition. In patients with a combined maximal instantaneous gradient of > 40 mmHg across the LVOT and aortic valve, and medically refractory symptoms despite maximal therapy, a surgical approach is the recommended course of action[10]. Surgical myectomy is favored over alcohol septal ablation due to its ability to simultaneously address aortic valve dysfunction and aortic pathology. However, if the patient is not a candidate for surgery and alcohol septal ablation is being considered, hemodynamic catheterization can provide valuable information as non-invasive quantitation of serial stenoses using doppler echocardiography has its limitations[10]. Additionally, innovative medicament treatment options are being used in this field. Such example are cardiac myosin inhibitors, a class of drugs that target the sarcomere, the basic contractile unit of cardiac muscle cells[6]. Mavacamten is a specific cardiac myosin inhibitor that has been approved by the FDA for the treatment of obstructive HCM in adult patients with New York Heart Association class II-III symptoms[6]. Mavacamten works by reducing the hypercontractility of the heart muscle, which can help to improve blood flow and alleviate symptoms in patients with obstructive HCM. It is taken orally and is usually prescribed in combination with other medications that help to manage symptoms and reduce the risk of complications[6].

THE IMPORTANCE OF FOCUSING ON AORTA AND LEFT VENTRICLE IN PATIENTS WITH BAV

The pathogenesis of BAV remains incompletely understood, but there is evidence of genetic predisposition, with several genes identified as potential contributors[16,17]. Additionally, the interplay between genetic factors and hemodynamic stresses has been proposed as a mechanism in the development of BAV[18]. BAV is often associated with aortopathy, a recent study shows up to 33%[19], suggesting that is a malformation involving the aorta[19,20]. The dilatation of the aortic root and ascending aorta is a common occurrence in individuals with BAV[21], particularly in certain morphology patterns [right-left *vs* right-noncoronary (RN) cusp fusion is associated with larger sinus of Valsalva diameter][22], and this condition can result in the formation of aneurysms, aortic dissection, or aortic rupture, even in the absence of significant valvular changes[23]. In the presence of root asymmetry (≥ 5 mm between cusp-to-cusp diameters), which is common in over 50% of BAV patients without raphe and over 40% of BAV-RN morphotype[24], it is possible to underestimate the diameter of the aortic root when measuring it using TTE with leading-leading edges. In such cases, it may be necessary to use more precise imaging techniques such as magnetic resonance imaging or CT to obtain the most accurate measurement of the largest aortic root diameter, especially in patients with BAV-RN and those without a raphe[25].

Research on BAV has not only focused on the valve itself, but also its effects on the left ventricle and associated remodeling[26-29]. Changes in left ventricular geometry and function, particularly impaired diastolic function, have been linked to symptom severity and poor clinical outcomes[29]. LV changes associated with BAV can include concomitant specific cardiomyopathies, as shown in a recent study

with a prevalence of up to 5.6%[11]. It is important to consider this possibility as a potential associated anomaly in BAV patients, as we have highlighted.

Recent literature review[25] emphasizes the significance of utilizing various diagnostic techniques and a multimodality approach in the comprehensive evaluation of BAV morphology, identification of associated anomalies, assessment of LV, risk stratification, and therapy guidance[23,30].

CONCLUSION

In addition to classical, clear-cut cases of degenerative, stenotic BAV, and associated hypertrophy of the LV, there is a possibility of "entity overlap", where only a thorough multimodal diagnostic workup by the multidisciplinary team can lead to a clear diagnosis, enabling the planning of therapeutic options and appropriate management of such patients. Multimodality imaging is essential for accurate diagnosis, follow-up, and surgical management in patients with BAV, given the potential for associated aortic and LV anomalies that need to be ruled out or identified.

FOOTNOTES

Author contributions: Sopek Merkaš I and Lakušić N were responsible for the conception and design of the manuscript, literature review, data collection and processing, and they wrote the first original draft; Predrijevac M and Štambuk K, contributed in data collection, literature review and design; Lakušić N, Štambuk K, Predrijevac M contributed in making critical revisions related to the important intellectual content of the manuscript; Hrabak Paar M analyzed and interpreted the CT and MR imaging findings, literature review, and making critical revisions related to the important intellectual content; all authors issued final approval for the version to be submitted.

Conflict-of-interest statement: We have no conflict-of-interest to disclose.

Open-Access: This article is an open-access article that was selected by an in-house editor and fully peer-reviewed by external reviewers. It is distributed in accordance with the Creative Commons Attribution NonCommercial (CC BY-NC 4.0) license, which permits others to distribute, remix, adapt, build upon this work non-commercially, and license their derivative works on different terms, provided the original work is properly cited and the use is non-commercial. See: <https://creativecommons.org/licenses/by-nc/4.0/>

Country/Territory of origin: Croatia

ORCID number: Ivana Sopek Merkaš 0000-0002-0888-5005; Nenad Lakušić 0000-0002-2329-2582; Mladen Predrijevac 0009-0002-6329-9815; Krešimir Štambuk 0000-0002-9107-6187; Maja Hrabak Paar 0000-0002-0390-8466.

S-Editor: Liu JH

L-Editor: A

P-Editor: Liu JH

REFERENCES

1. Liu T, Xie M, Lv Q, Li Y, Fang L, Zhang L, Deng W, Wang J. Bicuspid Aortic Valve: An Update in Morphology, Genetics, Biomarker, Complications, Imaging Diagnosis and Treatment. *Front Physiol* 2018; **9**: 1921 [PMID: 30761020 DOI: 10.3389/fphys.2018.01921]
2. Mordi I, Tzemos N. Bicuspid aortic valve disease: a comprehensive review. *Cardiol Res Pract* 2012; **2012**: 196037 [PMID: 22685681 DOI: 10.1155/2012/196037]
3. Vahanian A, Beyersdorf F, Praz F, Milojevic M, Baldus S, Bauersachs J, Capodanno D, Conradi L, De Bonis M, De Paulis R, Delgado V, Freemantle N, Gilard M, Haugaa KH, Jeppsson A, Jüni P, Pierard L, Prendergast BD, Sádaba JR, Tribouilloy C, Wojakowski W; ESC/EACTS Scientific Document Group. 2021 ESC/EACTS Guidelines for the management of valvular heart disease. *Eur Heart J* 2022; **43**: 561-632 [PMID: 34453165 DOI: 10.1093/eurheartj/ehab395]
4. Borger MA, Fedak PWM, Stephens EH, Gleason TG, Girdauskas E, Ikonidis JS, Khoynzhad A, Siu SC, Verma S, Hope MD, Cameron DE, Hammer DF, Coselli JS, Moon MR, Sundt TM, Barker AJ, Markl M, Della Corte A, Michelena HI, Elefteriades JA. The American Association for Thoracic Surgery consensus guidelines on bicuspid aortic valve-related aortopathy: Full online-only version. *J Thorac Cardiovasc Surg* 2018; **156**: e41-e74 [PMID: 30011777 DOI: 10.1016/j.jtcvs.2018.02.115]
5. Butzner M, Leslie DL, Cuffee Y, Hollenbeak CS, Sciamanna C, Abraham T. Stable Rates of Obstructive Hypertrophic Cardiomyopathy in a Contemporary Era. *Front Cardiovasc Med* 2021; **8**: 765876 [PMID: 35071348 DOI: 10.3389/fcvm.2021.765876]
6. Packard E, de Faria A, Peshin S, Reza N, Owens AT. Contemporary Therapies and Future Directions in the Management of Hypertrophic Cardiomyopathy. *Cardiol Ther* 2022; **11**: 491-507 [PMID: 36243823 DOI: 10.1007/s40119-022-00283-5]
7. Canepa M, Fumagalli C, Tini G, Vincent-Tompkins J, Day SM, Ashley EA, Mazzarotto F, Ware JS, Michels M, Jacoby

- D, Ho CY, Olivotto I; SHaRe Investigators. Temporal Trend of Age at Diagnosis in Hypertrophic Cardiomyopathy: An Analysis of the International Sarcomeric Human Cardiomyopathy Registry. *Circ Heart Fail* 2020; **13**: e007230 [PMID: 32894986 DOI: 10.1161/CIRCHEARTFAILURE.120.007230]
- 8 **Authors/Task Force members**, Elliott PM, Anastasakis A, Borger MA, Borggrefe M, Cecchi F, Charron P, Hagege AA, Lafont A, Limongelli G, Mahrholdt H, McKenna WJ, Mogensen J, Nihoyannopoulos P, Nistri S, Pieper PG, Pieske B, Rapezzi C, Rutten FH, Tillmanns C, Watkins H. 2014 ESC Guidelines on diagnosis and management of hypertrophic cardiomyopathy: the Task Force for the Diagnosis and Management of Hypertrophic Cardiomyopathy of the European Society of Cardiology (ESC). *Eur Heart J* 2014; **35**: 2733-2779 [PMID: 25173338 DOI: 10.1093/eurheartj/ehu284]
 - 9 **Reyes KRL**, Bilgili G, Rader F. Mavacamten: A First-in-class Oral Modulator of Cardiac Myosin for the Treatment of Symptomatic Hypertrophic Obstructive Cardiomyopathy. *Heart Int* 2022; **16**: 91-98 [PMID: 36741099 DOI: 10.17925/HI.2022.16.2.91]
 - 10 **Padang R**, Gersh BJ, Ommen SR, Geske JB. Prevalence and Impact of Coexistent Bicuspid Aortic Valve in Hypertrophic Cardiomyopathy. *Heart Lung Circ* 2018; **27**: 33-40 [PMID: 28377231 DOI: 10.1016/j.hlc.2017.01.020]
 - 11 **Jeong H**, Shim CY, Kim D, Choi JY, Choi KU, Lee SY, Hong GR, Ha JW. Prevalence, Characteristics, and Clinical Significance of Concomitant Cardiomyopathies in Subjects with Bicuspid Aortic Valves. *Yonsei Med J* 2019; **60**: 816-823 [PMID: 31433579 DOI: 10.3349/ymj.2019.60.9.816]
 - 12 **Brown PS Jr**, Roberts CS, McIntosh CL, Roberts WC, Clark RE. Combined obstructive hypertrophic cardiomyopathy and stenotic congenitally bicuspid aortic valve. *Am J Cardiol* 1990; **66**: 1273-1275 [PMID: 2239738 DOI: 10.1016/0002-9149(90)91120-u]
 - 13 **Emanuel R**, Withers R, O'Brien K, Ross P, Feizi O. Congenitally bicuspid aortic valves. Clinicogenetic study of 41 families. *Br Heart J* 1978; **40**: 1402-1407 [PMID: 737099 DOI: 10.1136/hrt.40.12.1402]
 - 14 **Somerville J**, McDonald L. Congenital anomalies in the heart with hypertrophic cardiomyopathy. *Br Heart J* 1968; **30**: 713-722 [PMID: 5676942 DOI: 10.1136/hrt.30.5.713]
 - 15 **Maron MS**, Olivotto I, Zenovich AG, Link MS, Pandian NG, Kuvlin JT, Nistri S, Cecchi F, Udelson JE, Maron BJ. Hypertrophic cardiomyopathy is predominantly a disease of left ventricular outflow tract obstruction. *Circulation* 2006; **114**: 2232-2239 [PMID: 17088454 DOI: 10.1161/CIRCULATIONAHA.106.644682]
 - 16 **Martínez-Micaelo N**, Beltrán-Debón R, Baiges I, Faiges M, Alegret JM. Specific circulating microRNA signature of bicuspid aortic valve disease. *J Transl Med* 2017; **15**: 76 [PMID: 28399937 DOI: 10.1186/s12967-017-1176-x]
 - 17 **Andreassi MG**, Della Corte A. Genetics of bicuspid aortic valve aortopathy. *Curr Opin Cardiol* 2016; **31**: 585-592 [PMID: 27583373 DOI: 10.1097/HCO.0000000000000328]
 - 18 **Atkins SK**, Sucusky P. Etiology of bicuspid aortic valve disease: Focus on hemodynamics. *World J Cardiol* 2014; **6**: 1227-1233 [PMID: 25548612 DOI: 10.4330/wjc.v6.i12.1227]
 - 19 **Sillesen AS**, Vøgg O, Pihl C, Raja AA, Sundberg K, Vedel C, Zingenberg H, Jørgensen FS, Vejlsstrup N, Iversen K, Bundgaard H. Prevalence of Bicuspid Aortic Valve and Associated Aortopathy in Newborns in Copenhagen, Denmark. *JAMA* 2021; **325**: 561-567 [PMID: 33560321 DOI: 10.1001/jama.2020.27205]
 - 20 **Morosin M**, Leonelli V, Piazza R, Cassin M, Neglia L, Leiballi E, Cervesato E, Barbati G, Sinagra G, Nicolosi GL. Clinical and echocardiographic predictors of long-term outcome of a large cohort of patients with bicuspid aortic valve. *J Cardiovasc Med (Hagerstown)* 2017; **18**: 74-82 [PMID: 27606785 DOI: 10.2459/JCM.0000000000000430]
 - 21 **Abdulkareem N**, Smelt J, Jahangiri M. Bicuspid aortic valve aortopathy: genetics, pathophysiology and medical therapy. *Interact Cardiovasc Thorac Surg* 2013; **17**: 554-559 [PMID: 23728086 DOI: 10.1093/icvts/ivt196]
 - 22 **Miśkowiec D**, Lipiec P, Szymczyk E, Wejner-Mik P, Michalski B, Kupeczyńska K, Wierzbowska-Drabik K, Kasprzak JD. Bicuspid aortic valve morphology and its impact on aortic diameters-A systematic review with meta-analysis and meta-regression. *Echocardiography* 2018; **35**: 667-677 [PMID: 29399873 DOI: 10.1111/echo.13818]
 - 23 **Verma R**, Cohen G, Colbert J, Fedak PWM. Bicuspid aortic valve associated aortopathy: 2022 guideline update. *Curr Opin Cardiol* 2023; **38**: 61-67 [PMID: 36718616 DOI: 10.1097/HCO.0000000000001020]
 - 24 **Vis JC**, Rodríguez-Palomares JF, Teixidó-Tura G, Galian-Gay L, Granato C, Guala A, Sao-Aviles A, Gutiérrez L, González-Alujas T, García-Dorado D, Evangelista A. Implications of Asymmetry and Valvular Morphotype on Echocardiographic Measurements of the Aortic Root in Bicuspid Aortic Valve. *J Am Soc Echocardiogr* 2019; **32**: 105-112 [PMID: 30269911 DOI: 10.1016/j.echo.2018.08.004]
 - 25 **Evangelista Masip A**, Galian-Gay L, Guala A, Lopez-Sainz A, Teixido-Turà G, Ruiz Muñoz A, Valente F, Gutierrez L, Fernandez-Galera R, Casas G, Panaro A, Marigliano A, Huguet M, González-Alujas T, Rodríguez-Palomares J. Unraveling Bicuspid Aortic Valve Enigmas by Multimodality Imaging: Clinical Implications. *J Clin Med* 2022; **11** [PMID: 35054153 DOI: 10.3390/jcm11020456]
 - 26 **Lee SY**, Shim CY, Hong GR, Seo J, Cho I, Cho IJ, Chang HJ, Ha JW, Chung N. Association of aortic phenotypes and mechanical function with left ventricular diastolic function in subjects with normally functioning bicuspid aortic valves and comparison to subjects with tricuspid aortic valves. *Am J Cardiol* 2015; **116**: 1547-1554 [PMID: 26409638 DOI: 10.1016/j.amjcard.2015.08.017]
 - 27 **Weismann CG**, Lombardi KC, Grell BS, Northrup V, Sugeng L. Aortic stiffness and left ventricular diastolic function in children with well-functioning bicuspid aortic valves. *Eur Heart J Cardiovasc Imaging* 2016; **17**: 225-230 [PMID: 26072912 DOI: 10.1093/ehjci/jev151]
 - 28 **Robicsek F**, Thubrikar MJ, Cook JW, Fowler B. The congenitally bicuspid aortic valve: how does it function? *Ann Thorac Surg* 2004; **77**: 177-185 [PMID: 14726058 DOI: 10.1016/s0003-4975(03)01249-9]
 - 29 **Lee SY**, Shim CY, Hong GR, Cho IJ, Chang HJ, Ha JW, Chung N. Determinants and Prognostic Significance of Symptomatic Status in Patients with Moderately Dysfunctional Bicuspid Aortic Valves. *PLoS One* 2017; **12**: e0169285 [PMID: 28060855 DOI: 10.1371/journal.pone.0169285]
 - 30 **Hardikar AA**, Marwick TH. Surgical thresholds for bicuspid aortic valve associated aortopathy. *JACC Cardiovasc Imaging* 2013; **6**: 1311-1320 [PMID: 24332283 DOI: 10.1016/j.jcmg.2013.10.005]



Published by **Baishideng Publishing Group Inc**
7041 Koll Center Parkway, Suite 160, Pleasanton, CA 94566, USA

Telephone: +1-925-3991568

E-mail: bpgoffice@wjgnet.com

Help Desk: <https://www.f6publishing.com/helpdesk>

<https://www.wjgnet.com>

