

# World Journal of *Clinical Infectious Diseases*

*World J Clin Infect Dis* 2022 September 29; 12(2): 50-75



**ORIGINAL ARTICLE****Retrospective Cohort Study**

- 50 Clinical significance of anti-nucleocapsid-IgG sero-positivity in SARS-CoV-2 infection in hospitalized patients in North Dakota

*Dzananovic B, Williamson M, Nwaigwe C, Routray C*

**Retrospective Study**

- 61 Five-year retrospective hospital-based study on epidemiological data regarding human leishmaniasis in West Kordofan state, Sudan

*Abdulslam Abdullah A, Ahmed M, Gadeed A, Eltayeb A, Ahmed S, Hamad S, Hussein M*

**CASE REPORT**

- 69 Incidental diagnosis of intestinal spirochetosis in a patient with chronic hepatitis B: A case report

*Novotny S, Mizrahi J, Yee EU, Clores MJ*

**ABOUT COVER**

Peer Reviewer of *World Journal of Clinical Infectious Diseases*, Ming-Ke Wang, MD, PhD, Associate Chief Physician, Naval Medical Center of PLA, Naval Medical University, No. 338 Huaihai West Road, Shanghai 200052, China. [wmke021@163.com](mailto:wmke021@163.com)

**AIMS AND SCOPE**

The primary aim of *World Journal of Clinical Infectious Diseases* (WJCID, *World J Clin Infect Dis*) is to provide scholars and readers from various fields of infectious diseases with a platform to publish high-quality basic and clinical research articles and communicate their research findings online.

WJCID mainly publishes articles reporting research results and findings obtained in the field of infectious diseases and covering a wide range of topics including community-acquired infections, cross infection, eye infections, focal infection, infectious gingivitis, intraabdominal infections, laboratory infection, Ludwig's angina, necrotizing ulcerative periodontitis, opportunistic infections, pelvic infection, pregnancy complications, etc.

**INDEXING/ABSTRACTING**

The WJCID is now abstracted and indexed in Reference Citation Analysis, China National Knowledge Infrastructure, China Science and Technology Journal Database, and Superstar Journals Database.

**RESPONSIBLE EDITORS FOR THIS ISSUE**

Production Editor: Yi-Xuan Cai; Production Department Director: Xiang Li; Editorial Office Director: Yun-Xiao Jiao Wu.

**NAME OF JOURNAL**

*World Journal of Clinical Infectious Diseases*

**ISSN**

ISSN 2220-3176 (online)

**LAUNCH DATE**

December 30, 2011

**FREQUENCY**

Continuous Publication

**EDITORS-IN-CHIEF**

Joao Mesquita, Caterina Sagnelli, Wei Wang, Haroon Ahmed

**EDITORIAL BOARD MEMBERS**

<https://www.wjgnet.com/2220-3176/editorialboard.htm>

**PUBLICATION DATE**

September 29, 2022

**COPYRIGHT**

© 2022 Baishideng Publishing Group Inc

**INSTRUCTIONS TO AUTHORS**

<https://www.wjgnet.com/bpg/gerinfo/204>

**GUIDELINES FOR ETHICS DOCUMENTS**

<https://www.wjgnet.com/bpg/GerInfo/287>

**GUIDELINES FOR NON-NATIVE SPEAKERS OF ENGLISH**

<https://www.wjgnet.com/bpg/gerinfo/240>

**PUBLICATION ETHICS**

<https://www.wjgnet.com/bpg/GerInfo/288>

**PUBLICATION MISCONDUCT**

<https://www.wjgnet.com/bpg/gerinfo/208>

**ARTICLE PROCESSING CHARGE**

<https://www.wjgnet.com/bpg/gerinfo/242>

**STEPS FOR SUBMITTING MANUSCRIPTS**

<https://www.wjgnet.com/bpg/GerInfo/239>

**ONLINE SUBMISSION**

<https://www.f6publishing.com>



Retrospective Cohort Study

# Clinical significance of anti-nucleocapsid-IgG sero-positivity in SARS-CoV-2 infection in hospitalized patients in North Dakota

Bakir Dzananovic, Mark Williamson, Casmir Nwaigwe, Chittaranjan Routray

**Specialty type:** Infectious diseases

**Provenance and peer review:**

Unsolicited article; Externally peer reviewed.

**Peer-review model:** Single blind

**Peer-review report's scientific quality classification**

Grade A (Excellent): 0

Grade B (Very good): 0

Grade C (Good): C, C

Grade D (Fair): D

Grade E (Poor): 0

**P-Reviewer:** Casaca W, Brazil; Freund O, Israel

**Received:** June 18, 2022

**Peer-review started:** June 18, 2022

**First decision:** July 14, 2022

**Revised:** August 2, 2022

**Accepted:** September 21, 2022

**Article in press:** September 21, 2022

**Published online:** September 29, 2022



**Bakir Dzananovic**, Department of Medicine, Idaho College of Osteopathic Medicine, Meridian, ID 83642, United States

**Mark Williamson**, Department of Biostatistics, Epidemiology and Research Design Core, University of North Dakota, Grand Forks, ND 58202, United States

**Casmir Nwaigwe**, Department of Internal Medicine, University of North Dakota School of Medicine and Health Sciences, Minot, ND 58701, United States

**Chittaranjan Routray**, Family Medicine, University of North Dakota School of Medicine and Health Sciences, Minot, ND 58701, United States

**Chittaranjan Routray**, Department of Internal Medicine, Trinity Health, Minot, ND 58701, United States

**Corresponding author:** Chittaranjan Routray, MD, Clinical Assistant Professor (Honorary), Family Medicine, University of North Dakota School of Medicine and Health Sciences, Minot, ND 58701, United States. [routrayc@gmail.com](mailto:routrayc@gmail.com)

## Abstract

### BACKGROUND

During the peak of the coronavirus diseases 2019 (COVID-19) pandemic, clinicians actively studied the utility of various epidemiologic-clinical parameters to determine the prognosis for patients hospitalized with severe acute respiratory syndrome coronavirus 2 (SARS-CoV-2) infection. Serum IgG antibody level, D-Dimer, C-reactive protein and neutrophil to lymphocyte ratio, *etc.* were studied to assess their association with the clinical course in hospitalized patients and predict who may be at increased risk for poor clinical outcome. However, the influence of SARS-CoV-2-anti-nucleocapsid-IgG antibody (IgG-N) sero-positivity on the clinical outcome of patients with COVID-19 is largely unknown.

### AIM

To study the influence of SARS-CoV-2 anti-nucleocapsid-IgG seropositivity on clinical course and diseases severity in hospitalized COVID-19 patients.

### METHODS

We conducted a retrospective study of adults admitted to a tertiary care community hospital in North Dakota with COVID-19. Included patients had severe

COVID-19 disease or worse and so required supplemental oxygen on admission. They were serologically tested for SARS-CoV-2-anti-nucleocapsid-IgG (IgG-N). The IgG-N positive group were 26 patients and the IgG-N negative group had 33 patients. The groups received similar treatment for COVID-19 as approved by our healthcare system from Day 1 of admission until discharge or death. Measurable parameters for monitoring the patients' clinical course included the following: Length of hospitalization (LOS), use of high flow nasal canula (HFNC), use of noninvasive bilevel positive pressure ventilation (BiPAP), admission into the intensive care unit, need for mechanical ventilation (VENT); and the patient outcome/discharge or death. Other variables included were age, gender and body-mass-index, and duration of symptoms before presentation. For each variable, the outcome was modeled as a function of SARS-CoV-2-IgG-N status (positive or negative) using a generalized linear model. For LOS-days, a negative binomial distribution was used as it had a better fit than a Poisson or Gaussian distribution as evidenced by a Pearson chi-square/df value closer to 1.0. All other outcomes utilized a binary logistic regression model.

## RESULTS

After a thorough examination of patient data, it was found that admission rates to the Intensive Care Unit, as well as the usage of BiPAP, HFNC and VENT support, in conjunction with patient outcomes, were not significantly different across IgG-N status. However, the LOS variable when assessed by IgG-N status was found to be significant ( $t$  value = 2.16,  $P$  value = 0.0349). IgG-N negative patients had higher than average LOS in comparison to IgG-N positive patients (15.12 *vs* 9.35 d). Even when removing the extreme value (an LOS of 158 d), IgG-N negative patients still had slightly higher than average stays (10.66 *vs* 9.35 d) but the relationship was no longer significant. For patient outcome/death, only age (numerical) was a significant predictor ( $F$  value = 4.66,  $P$  value = 0.0352). No other variables for any of the outcomes were significant predictors of clinical course or disease severity.

## CONCLUSION

Our study demonstrated that IgG-N seroconversion had no significant association with clinical outcomes in hospitalized COVID-19 patients.

**Key Words:** COVID-19; SARS-CoV-2 IgG-N; Anti-nucleocapsid IgG; Cytokines

©The Author(s) 2022. Published by Baishideng Publishing Group Inc. All rights reserved.

**Core Tip:** We intended to study an immunologic marker to predict the need for advanced oxygen supplement system and clinical outcome in order to support our hospital crisis management system during the peak of the pandemic. Our study demonstrated that presence of anti-nucleocapsid-IgG (IgG-N) against severe acute respiratory syndrome coronavirus 2 infection had no impact on the clinical outcome or disease severity in hospitalized coronavirus disease 2019 (COVID-19) patients. We did not find a correlation of statistical significance to use IgG-N as a biomarker to predict clinical outcome in COVID-19 patients admitted to a community hospital in North Dakota.

**Citation:** Dzananovic B, Williamson M, Nwaigwe C, Routray C. Clinical significance of anti-nucleocapsid-IgG sero-positivity in SARS-CoV-2 infection in hospitalized patients in North Dakota. *World J Clin Infect Dis* 2022; 12(2): 50-60

**URL:** <https://www.wjgnet.com/2220-3176/full/v12/i2/50.htm>

**DOI:** <https://dx.doi.org/10.5495/wjcid.v12.i2.50>

## INTRODUCTION

Severe acute respiratory syndrome coronavirus 2 (SARS-CoV-2) is a novel virus which belongs to the family of *Coronaviridae*, the causative agent for coronavirus diseases 2019 (COVID-19)[1]. SARS-CoV-2 emerged out of Wuhan in China and soon after, it spread to the entire world and thereby becoming a "Pandemic"[2-4]. After two years of rapid spread and the virus claiming over five million lives, healthcare system continues to scramble to protect patients from the atypical pneumonia-like illness caused by COVID-19. Diagnosis of SARS-CoV-2 infection is primarily dependent on reverse-transcription polymerase chain reaction (RT-PCR) testing of nasopharyngeal swab samples with more recent progress into rapid antigen testing[5,6]. Rapid community spread of the infection and dev-



elopment of herd immunity by community exposure has been a favorite topic of discussion by epidemiologists while the scientific community have successfully raced to design several effective vaccines for COVID-19.

Taking a dive into the pathophysiology of COVID-19, a strong comprehension of the role of the humoral immunity becomes very pertinent. It is known that infection with SARS-CoV-2, elicits an adaptive immune response by producing target specific antibodies which includes IgM, IgG and IgA[7-9]. Among these antibodies, IgG has been of tremendous interest to the scientific community due to its role in long-term protection against the virus[10]. After an infection with SARS-CoV-2, it takes about 10-14 d to produce IgG antibodies which peak around the third week and continues to remain detectable for about 8-12 mo[11,12]. SARS-CoV-2 is a positive sense single stranded RNA virus comprised of four different structural proteins. Those are the nucleocapsid protein (N protein), spike protein (S-protein), matrix protein (M-protein) and the envelope protein (E-protein)[13]. Antibody against the S-protein (IgG-S) is believed to be the neutralizing antibody that is the primary target of the vaccine trials. There have been reports showing a positive correlation between higher IgG-S levels and diseases severity[14, 15]. On the contrary, another study cited no association of IgG-S with patient outcomes such as need for maximal oxygen support, intensive care unit (ICU) admission, duration of hospitalization and death [16]. Alternatively, it could be argued that the non-neutralizing antibodies against the nucleocapsid protein (IgG-N) leads to robust inflammation cascade and release of cytokines thus contributing to debilitating pulmonary injury. It is believed that the cytokine storm plays a key role in the pathogenesis and COVID-19 prognosis[17,18]. A report by Batra *et al*[19] studied the role of IgG-N in COVID-19 and based on the findings the authors recommended using IgG-N titers as a prognostic factor for the clinical course in patients. In this study, a higher IgG-N titer was associated with extended duration of stay in the hospital and increased rate of admission into the ICU. Another study demonstrated that the stronger IgG-N seroconversion response is associated with more diseases severity compared to the weak responders[20]. There is still a paucity of data about the functionality of IgG-N in the pathophysiology of COVID-19. Given this concept of targeting various structural components of this prolific virus, study of the seroconversion and IgG-kinetics has gained a lot of importance to the researchers. Literature on the long-term kinetics of IgG antibody levels and their corresponding neutralizing effectiveness is sparse.

Practicing in a tertiary care community-based teaching hospital in North Dakota, United States, we have had experience with the pre-vaccine phase of COVID-19 pandemic. Noncompliance with public mask usage and rapid community transmission led to a sharp rise in COVID-19 illness and hospitalizations in North Dakota. In the midst of a healthcare crisis, we decided to investigate whether a qualitative IgG-N could be used as a molecular marker to determine the prognosis in the hospitalized patients. Basing our hypothesis on a theory that a rampaging community spread of SARS-CoV-2 infection led to a measurable IgG-N seroconversion of our population, thus impacting outcomes from hospitalization due to COVID-19, we retrospectively analyzed the data provided by the single-center community hospital from which we practiced.

## MATERIALS AND METHODS

### *Study population and data collection*

All patients were admitted to the community hospital between December 1, 2020 and August 30, 2021. Fifty-nine patients were included in the study who were screened for IgG-N within 48 h of admission. We excluded all patients that had been admitted to the hospital with a non-COVID-19 diagnosis who incidentally tested positive for SARS-CoV-2 during screening. Patients with severe or critical COVID-19 illness as per the definition of National Institute of Health were included in the study. Those with mild and moderate illness were excluded from the study as most of them did not meet criteria for hospitalization. None of the included patients had been vaccinated against COVID-19. All the patients were confirmed positive for SARS-CoV-2 infection using RT-PCR from nasopharyngeal swab samples at admission. Both male and female patients aged 28 to 96 were included in the study. All patients were checked for the presence of SARS-CoV-2-IgG-N within 48 h of admission by using Abbott SARS-CoV-2-IgG assay, that uses a two-step chemiluminescent microparticle immunoassay method with acridinium-labeled anti-human IgG, performed at North Dakota state laboratory. Admission blood samples identified 26 patients positive for IgG-N against SARS-CoV-2 and 33 negatives. In October 2021, we started data acquisition, reviewing the electronic medical record of included patients.

### *Study design*

As this retrospective cohort study investigated the study population from patient admission to outcome, a thorough review of the electronic medical record was performed to capture data. This data was inclusive of the following: age, gender, body mass index (BMI), duration of symptoms prior to hospitalizations (DOS), length of hospital stay measured in days (LOS), admission to ICU, need for high flow nasal cannula (HFNC), bilevel positive airway pressure ventilation (BiPAP) or mechanical ventilation (VENT) for supplemental oxygen/support, as well as the final patient outcome - discharge or death.

(Table 1)

**Statistical analysis**

**Formatting:** Age, BMI and DOS were numerical variables. However, additional constructs split Age and BMI into two and three-group categories for some analyses. For example, BMI\_2, patients with a BMI of < 29.9 were put in one group, and those > 30 in a second group. For BMI\_3, patients with a BMI of < 25 were put into one group, those between BMI of 25-29.9 in a second group, and those with BMI > 30 in a third. For the variable labelled Age\_2, patients < 75 were put in one group, and those 75+ in a second group. For Age\_3, patients with an age of < 40 were put into the first group, those between 40-75 in a second, and those 75+ in a third group. It should be noted here that one patient had an extreme value for their LOS at-158 d. Models were run with both the patient included and excluded to determine the sensitivity of the models to this extreme value.

**Correlation of outcomes:** For each pair of outcomes (Death, ICU, BiPAP, VENT and HFNC), the phi coefficient (measure of association between binary variable, comparable to the Pearson coefficient for continuous normal variables) was calculated (Table 2).

**Outcomes by IgG status alone:** For each variable, the outcome was modeled as a function of IgG-N status (positive or negative) using a generalized linear distribution. For LOS, it was determined that a negative binomial distribution had a better fit than a Poisson or Gaussian distribution, as evidenced by a Pearson chi-square/df value closer to 1.0. The negative binomial distribution is also less sensitive to outliers. All other outcomes utilized a binary logistic regression model.

**Outcomes by IgG-N status full model:** For any single models that were significant, a multiple regression model was utilized, accounting for the consequential effect (if any) of the defined confounding variables of age, sex, BMI, and duration of symptoms.

**Outcomes by other factors**

LOS was modeled as a function of age using a negative binomial model. From there, age (categorical), BMI (numerical), and the interaction of BMI and age were each run with and without the extreme patient LOS-value noted in the previous section. The patient outcome/death was modeled as a function of LOS using a logistic model. Then, death was modeled as a function of age (numerical), and then age (categorical). The same was done for BMI. Finally, death was modeled as a function of sex. ICU, BiPAP, VENT, and HFNC were each modeled as a function of age (numerical), BMI (numerical), and sex separately.

Statistical analysis used SAS Studio V.3.8 (Cary, North Carolina, United States). The statistical review of the study was performed by a biomedical statistician.

**RESULTS**

We conducted a retrospective cohort study among fifty-nine adults aged between 28-96, admitted to the hospital with severe or critical COVID-19 illness between December 2020 and August 2021.

**Correlation of outcomes**

Unsurprisingly, most outcomes were strongly correlated. VENT and ICU rates were very strongly correlated (Phi Coeff = 0.94). All but one patient who went on mechanical ventilation was also admitted to the ICU. In contrast, VENT and HFNC rates were only moderately correlated (Phi Coeff = 0.43).

**Outcomes by IgG status alone**

Patient outcome, ICU admissions, HFNC, BiPAP and VENT rates were not significantly different across IgG-N status (Figure 1A-E). However, LOS by IgG-N status was found to be significant ( $t$  value = 2.16,  $P$  value = 0.0349) when including the extreme value (LOS > 150 d). IgG-N negative patients had higher average LOS than IgG-N positive patients (15.12 *vs* 9.35 d). However, when removing the extreme value (LOS of 150 d), IgG-N negative patients still had slightly higher average LOS (10.66 *vs* 9.35 d), but the relationship was no longer significant (Figure 1F). Furthermore, median LOS was lower in IgG-N negative patients (6.5 *vs* 7.5 d).

**Outcomes by IgG-N status full model**

Because LOS-days and IgG-N status was significant, at least when not removing the extreme value, the full model was considered which included age, BMI, and sex, and duration of symptoms. However, in the full model, IgG-N was not significant when controlling for the other variables. This remained true when using a model without the extreme value.

**Table 1 Summary statistics by IgG-N status**

	IgG-N positive	IgG-N negative
<b>Demographic information</b>		
Number	26 (19 male, 7 female)	32 (20 male, 12 female)
Mean age	61.1 (17.6)	60.0 (16.1)
Median age	63.5 (25)	63.5 (21)
Mean BMI	33.7 (7.4)	33.9 (7.7)
Median BMI	32.8 (12)	33.9 (10.1)
Mean DOS-d	7.5 (5.6)	6.5 (4.1)
Median DOS-d	5.5 (6.0)	7.0 (7.0)
<b>Outcome</b>		
Mean LOS-d	9.3 (5.6)	10.7 (10.4)
Median LOS-d	7.5 (7)	6.5 (7)
Proportion of death	0.23	0.19
Proportion of ICU	0.19	0.16
Proportion of BiPAP	0.27	0.22
Proportion of VENT	0.15	0.16
Proportion of HFNC	0.38	0.25

Standard deviation and Interquartile Range are found in parentheses for mean and medians respectively. DOS: Duration of symptoms (days); LOS: length of stay (days); ICU: Intensive care unit; BiPAP: Bilevel positive airway pressure ventilation; VENT: Mechanical ventilation; HFNC: High flow nasal cannula.

**Table 2 Matrix of Phi coefficient for binary outcomes**

	Death	ICU	BiPAP	VENT	HFNC
Death	1	-	-	-	-
ICU	0.67	1	-	-	-
BiPAP	0.71	0.70	1	-	-
VENT	0.60	0.94	0.65	1	-
HFNC	0.58	0.48	0.67	0.43	1

ICU: Intensive care unit; BiPAP: Bilevel positive airway pressure ventilation; VENT: Mechanical ventilation; HFNC: High flow nasal cannula.

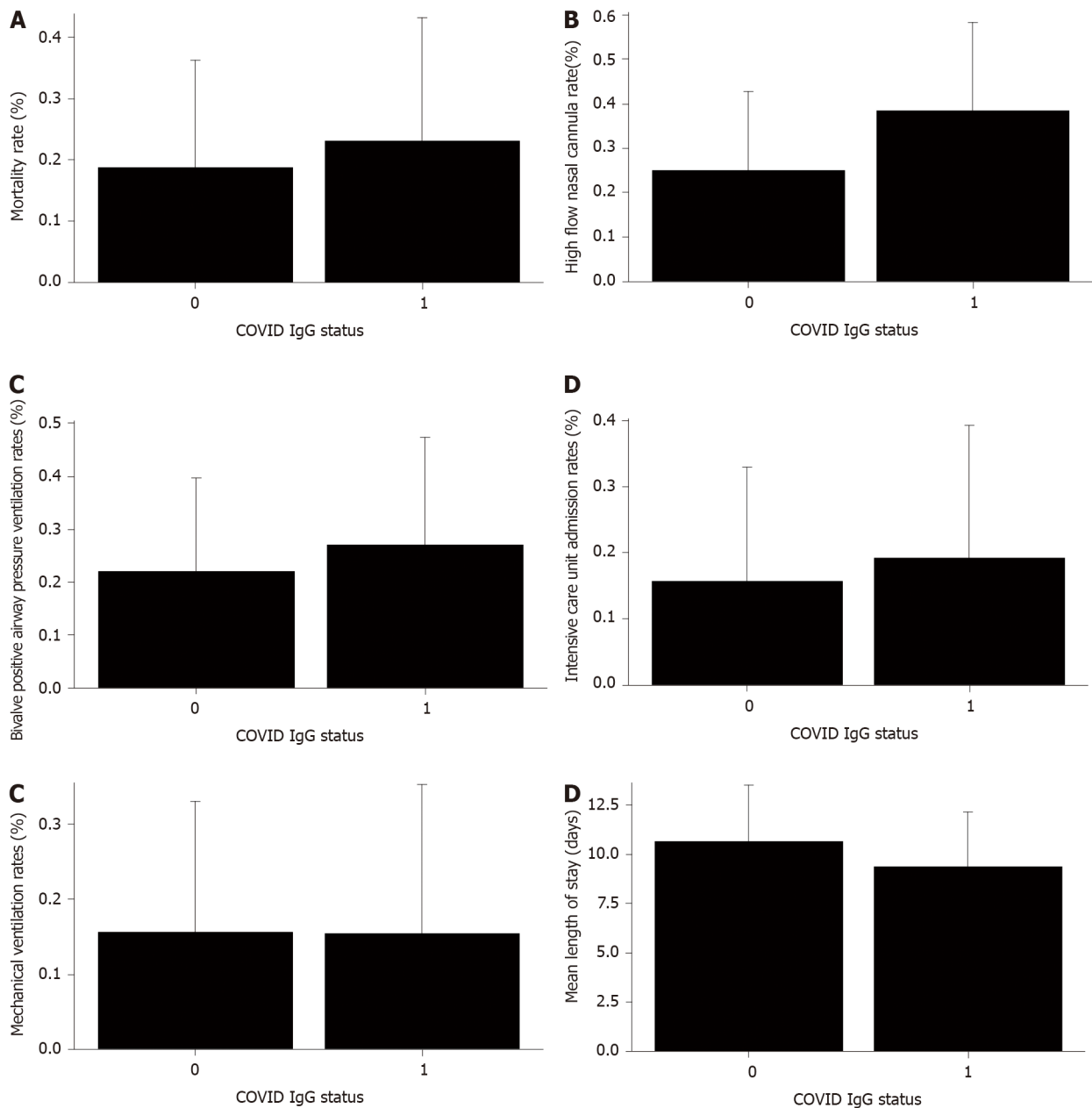
### Outcomes by other factors

For death, only age (numerical) was a significant predictor ( $F$  value = 5.07,  $P$  value = 0.0283). As age increased, the probability of having an endpoint of one (Death) increased (Figure 2). No other variables for any of the outcomes were significant.

## DISCUSSION

SARS-CoV-2 infection causes an atypical pneumonia like respiratory illness known as COVID-19 characterized by fever, dyspnea, anosmia and a worsening hypoxia[21,22]. Among those hospitalized with COVID-19, patients often required supplemental oxygen using HFNC, BiPAP and an increased admission into the ICU requiring mechanical ventilation depending on the severity of the respiratory failure and lung parenchymal involvement. The pathophysiology of COVID-19 is primarily an immune-mediated process with a variety of antibody signatures among which the IgG signatures were of interest to our study. A robust immune-mediated inflammatory cascade guides the pathophysiology of the COVID-19 illness[22-24]. Different proinflammatory cytokines such as IL-6 and TNF- $\alpha$  have been



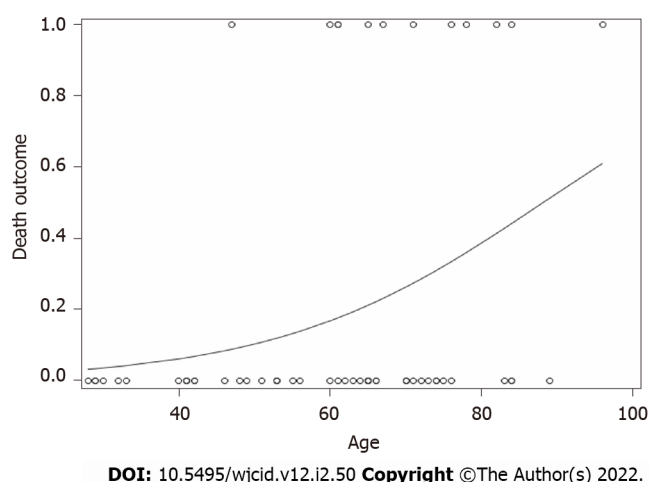


DOI: 10.5495/wjcid.v12.i2.50 Copyright ©The Author(s) 2022.

**Figure 1 Clinical outcomes across Covid IgG status (0 = negative, 1 = positive).** A: Mortality rates; B: High flow nasal cannula rates; C: Bilevel positive airway pressure ventilation rates; D: Intensive care unit admission rates; E: Mechanical ventilation rates; F: Mean length of stay. COVID: Coronavirus disease.

correlated with diseases severity[25].

There is some data available to understand the humoral response to SARS-CoV-2 infection and role of various IgG subtypes in the body's line of defense. Much of it was inherited from the studies of SARS-CoV-1[26]. IgG antibodies directed towards the spike protein (IgG-S) and that of the nucleocapsid protein (IgG-N) are the two important components of humoral immunity against SARS-CoV-2 infection. SARS-CoV-2 uses the spike protein to bind to the target cell through its receptor-binding domain and therefore is the target site for neutralizing antibody, IgG-S[27]. The role of IgG-S in early viral clearance is crucial for favorable clinical course and survival[28-30]. IgG-S is considered the neutralizing antibody which may elicit a protection against SARS-CoV-2 by interfering with virion binding to host cell receptors, blocking cellular uptake and preventing endosomal processing of viral genome[13,27]. However, the kinetics of the antibody response becomes more complex to understand with current available literature, which is conflicting. In one interesting study, there is a link between the IgG-S response and COVID-19 severity, but the antibody response has to develop in a specific time window to improve viral clearance and disease outcomes. A faster antibody response was associated with better survival (within the first 14 d of infection) and deceased patients showed a slower antibody response although they reached higher IgG titers later in the disease trajectory[31]. Other studies have shown that, severely ill patients exhibit higher peak, faster and stronger antibody response compared to mildly



**Figure 2** Logistic regression results of death outcome by age (Death = 1, Recovery = 0) by age (numerical). As age increased, the probability of mortality increased ( $F$  value = 5.07,  $P$  value = 0.0283).

symptomatic patients[13,32]. Severely ill COVID-19 patients have been found to produce a unique serologic signature with increased IgG-S with afucosylated Fc glycans. The Fc modification of IgG-S triggers activation of natural killers cells and enhances production of IL-6 and TNF- $\alpha$  by primary monocytes that results in more severe disease[33].

The role of IgG-N in the pathogenesis and clinical course of COVID-19 remains largely unknown. As to our current knowledge, severe COVID-19 is characterized by a series of inflammatory signatures including a cytokine storm, inflammatory alveolar infiltrates and formation of vascular microthrombi [33]. During the peak of the pandemic, clinicians took their chance to use different inflammatory markers such as C-reactive protein, platelet count, D-dimer and Ferritin, to name a few to monitor diseases progression and crisis planning. However, data to support the specificity of these inflammatory signatures as reliable prognostic markers for COVID-19 is limited[34,35]. As per one report by Batra *et al* [19], showed that titers of IgG-N at the time of admission can be a prognostic factor in the clinical course of the diseases and was associated with increased incidence of hypoxemia, admission into the ICU and extended length of stay in the hospital. In our study, we hypothesized that the presence of IgG-N at the time of admission into the hospital could be used as a marker of impending diseases severity and determine hospital course. We pursued a qualitative measurement of IgG-N on all our patients. Some key parameters such as the degree of hypoxemia, mean length of hospitalization, ICU admission, need for mechanical ventilation and patient outcome as in-hospital datasets were examined in our study group. We enrolled a total of 59 patients who were admitted with hypoxia secondary to COVID-19, out of which 26 (44%) patients had IgG-N antibody at the time of admission into the hospital. Our goal was to investigate the role of IgG-N as a marker to anticipate the clinical course in hospitalized patients. Based on our results, we concluded that IgG-N might not be a reliable predictor of COVID-19 diseases severity.

Our data indicate that age was a single independent predictor of death following hospitalization, which is in support of reports published earlier[36,37]. As age increased, the probability of death increased (Figure 2). Mortality rate was not significantly different in IgG-N positive group *vs* negative (Figure 1A). We did not find any statistical difference with the need to use HFNC between the two groups (Figure 1B). Many of our patient population had clinically progressive diseases with worsening respiratory failure requiring BiPAP or transfer to ICU to be intubated and placed on mechanical ventilation. After following the patient pool until discharge, we did not find any significant difference with the need to use BiPAP between the two groups with and without IgG-N at the time of admission (Figure 1C). The admission rate into the ICU and need for mechanical ventilation was not statistically significant either (Figures 1D and E). Although we saw an extended LOS among the IgG-N negative group, but after adjusting for the extreme outlier, the findings were no longer significant (Figure 1F). Furthermore, median LOS was actually lower in the IgG-N negative group, showing that the extreme value was skewing the LOS average.

Our study had several limitations. We did not measure the IgG-N antibody titers in our study and so we cannot imply if high *vs* low antibody titers have any direct impact on the disease severity and mortality in COVID-19. Since every individual patient was enrolled into the study only when they were symptomatic enough to meet criteria for hospitalization, especially hypoxic with oxygen saturation < 90%, it could be argued that they may be at different stage of the diseases course and different phase of the seroconversion. This could have confounded our findings since seroconversion and viral kinetics are time dependent phenomena. We did not standardize our patients based on their underlying comorbidities, which further could have influenced our results. More investigation using a larger

sample size and different IgM/IgG subtypes is warranted to put more light in this area.

## CONCLUSION

We have analyzed the presence or absence of IgG-N in patients admitted to the hospital with severe or critical COVID-19 illness and evaluated the effects of presence of IgG-N on clinical severity and outcome. Age happens to be the single independent risk factor for a worse outcome. Our analysis revealed no significant correlation between IgG-N status and degree of respiratory failure or mortality. The degree of respiratory failure was characterized by the utilization of high flow nasal canula, bilevel positive pressure ventilation and intubation with mechanical ventilation. IgG-N seroconversion had no significant effect on mean length of stay in the hospital. Further studies with large cohorts and risk-adjusted comorbidities are needed to demonstrate the more accurate role of IgG-N seroconversion on clinical outcome.

## ARTICLE HIGHLIGHTS

### **Research background**

During the peak of the coronavirus disease 2019 (COVID-19) pandemic, hospitals and clinicians had to adapt quickly to the rapid spread of the infection in the community. In the absence of adequate literature, clinicians hypothesized and studied the utility of various protein markers to prognosticate their patients. We intended to study the correlation of anti-nucleocapsid-severe acute respiratory syndrome coronavirus 2 (SARS-CoV-2) antibody (IgG-N) presence with the clinical outcome in severely ill hospitalized COVID-19 patients.

### **Research motivation**

We were interested in characterizing a correlation between presence or absence of IgG-N and clinical outcome in hospitalized COVID-19 patients. We wanted to test the ability of IgG-N in predicting the severity of illness, maximal oxygen support needed and final outcome in order to mobilize staff, manage intensive care unit (ICU) beds and ventilators as a part of the crisis management planning.

### **Research objectives**

To study the effect of SARS-CoV-2 anti-nucleocapsid-IgG on COVID-19 diseases severity and outcome. We studied the effect of presence or absence of IgG-N on mean length of stay in the hospital, maximal oxygen support needed and mortality.

### **Research methods**

We conducted a retrospective cohort study on adults aged between 28-96, being admitted to the hospital with severe or critical COVID-19 illness. Blood sample was collected either at or within 48 h of admission to the hospital to check for SARS-CoV-2-IgG-N. A total of fifty nine patients were enrolled into the study. We utilized a binary logistic regression model to analyze the outcome data.

### **Research results**

Our data demonstrated that the need for maximal oxygen support, mean length of stay in the hospital and mortality were not significantly different between the groups with or without IgG-N at the time of admission.

### **Research conclusions**

We concluded that IgG-N seroconversion had no significant correlation with the need for maximal oxygen support as well as mortality during the course of hospitalization. Length of stay in the hospital was not significantly different across the IgG-N status.

### **Research perspectives**

Our study demonstrated that presence of anti-nucleocapsid-IgG against SARS-CoV-2 infection had no impact on the clinical outcome or diseases severity in hospitalized COVID-19 patients. We did not find a correlation of statistical significance to use IgG-N as a biomarker to predict clinical outcome in COVID-19 patients admitted to a community hospital in North Dakota. Acknowledging the limitation of our study, we look forward to a future study with larger sample size and risk-adjusted comorbidities to investigate the association with better clarity.

## ACKNOWLEDGEMENTS

We would like to acknowledge Ms. Shannon Yarbrough, for her contribution with medical library services.

## FOOTNOTES

**Author contributions:** Routray C was the principal investigator and designed the study; Nwaigwe C was the co-investigator, participating in study design and revision of manuscript for intellectual content; Dzananovic B helped with data acquisition, analysis and initial manuscript writing; Williamson M performed the biostatistical analysis and interpretation of the data.

**Supported by** the National Institute of General Medical Sciences of the National Institutes of Health under Award, No. U54GM128729.

**Institutional review board statement:** Institutional review board statement: This study was reviewed and approved by the Trinity Hospital, Institutional Review Board Committee.

**Informed consent statement:** Obtaining informed consent was waived by the IRB committee since this was a retrospective cohort study.

**Conflict-of-interest statement:** There are no conflict of interest to report.

**Data sharing statement:** No additional data are available.

**STROBE statement:** The authors have read the STROBE statement- checklist of items, and the manuscript was prepared and revised according to the STROBE Statement-checklist of items.

**Open-Access:** This article is an open-access article that was selected by an in-house editor and fully peer-reviewed by external reviewers. It is distributed in accordance with the Creative Commons Attribution NonCommercial (CC BY-NC 4.0) license, which permits others to distribute, remix, adapt, build upon this work non-commercially, and license their derivative works on different terms, provided the original work is properly cited and the use is non-commercial. See: <https://creativecommons.org/licenses/by-nc/4.0/>

**Country/Territory of origin:** United States

**ORCID number:** Chittaranjan Routray 0000-0001-7004-0372.

**S-Editor:** Liu JH

**L-Editor:** A

**P-Editor:** Liu JH

## REFERENCES

- 1 **Zhou P**, Yang XL, Wang XG, Hu B, Zhang L, Zhang W, Si HR, Zhu Y, Li B, Huang CL, Chen HD, Chen J, Luo Y, Guo H, Jiang RD, Liu MQ, Chen Y, Shen XR, Wang X, Zheng XS, Zhao K, Chen QJ, Deng F, Liu LL, Yan B, Zhan FX, Wang YY, Xiao GF, Shi ZL. A pneumonia outbreak associated with a new coronavirus of probable bat origin. *Nature* 2020; **579**: 270-273 [PMID: 32015507 DOI: 10.1038/s41586-020-2012-7]
- 2 **Lu H**, Stratton CW, Tang YW. Outbreak of pneumonia of unknown etiology in Wuhan, China: The mystery and the miracle. *J Med Virol* 2020; **92**: 401-402 [PMID: 31950516 DOI: 10.1002/jmv.25678]
- 3 **Zheng M**, Gao Y, Wang G, Song G, Liu S, Sun D, Xu Y, Tian Z. Functional exhaustion of antiviral lymphocytes in COVID-19 patients. *Cell Mol Immunol* 2020; **17**: 533-535 [PMID: 32203188 DOI: 10.1038/s41423-020-0402-2]
- 4 **Zhang J**, Litvinova M, Wang W, Wang Y, Deng X, Chen X, Li M, Zheng W, Yi L, Wu Q, Liang Y, Wang X, Yang J, Sun K, Longini IM Jr, Halloran ME, Wu P, Cowling BJ, Merler S, Viboud C, Vespignani A, Ajelli M, Yu H. Evolving epidemiology and transmission dynamics of coronavirus disease 2019 outside Hubei province, China: a descriptive and modelling study. *Lancet Infect Dis* 2020; **20**: 793-802 [PMID: 32247326 DOI: 10.1016/S1473-3099(20)30230-9]
- 5 **Liu R**, Han H, Liu F, Lv Z, Wu K, Liu Y, Feng Y, Zhu C. Positive rate of RT-PCR detection of SARS-CoV-2 infection in 4880 cases from one hospital in Wuhan, China, from Jan to Feb 2020. *Clin Chim Acta* 2020; **505**: 172-175 [PMID: 32156607 DOI: 10.1016/j.cca.2020.03.009]
- 6 **Muecksch F**, Wise H, Batchelor B, Squires M, Semple E, Richardson C, McGuire J, Clearly S, Furrie E, Greig N, Hay G, Templeton K, Lorenzi JCC, Hatzioannou T, Jenks S, Bieniasz PD. Longitudinal Serological Analysis and Neutralizing Antibody Levels in Coronavirus Disease 2019 Convalescent Patients. *J Infect Dis* 2021; **223**: 389-398 [PMID: 33140086 DOI: 10.1093/infdis/jiaa659]
- 7 **Ma H**, Zeng W, He H, Zhao D, Jiang D, Zhou P, Cheng L, Li Y, Ma X, Jin T. Serum IgA, IgM, and IgG responses in

- COVID-19. *Cell Mol Immunol* 2020; **17**: 773-775 [PMID: [32467617](#) DOI: [10.1038/s41423-020-0474-z](#)]
- 8 **Seow J**, Graham C, Merrick B, Acors S, Pickering S, Steel KJA, Hemmings O, O'Byrne A, Kouphou N, Galao RP, Betancor G, Wilson HD, Signell AW, Winstone H, Kerridge C, Huettnier I, Jimenez-Guardeño JM, Lista MJ, Temperton N, Snell LB, Bisnauthsing K, Moore A, Green A, Martinez L, Stokes B, Honey J, Izquierdo-Barras A, Arbane G, Patel A, Tan MKI, O'Connell L, O'Hara G, MacMahon E, Douthwaite S, Nebbia G, Batra R, Martinez-Nunez R, Shankar-Hari M, Edgeworth JD, Neil SJD, Malim MH, Doores KJ. Longitudinal observation and decline of neutralizing antibody responses in the three months following SARS-CoV-2 infection in humans. *Nat Microbiol* 2020; **5**: 1598-1607 [PMID: [33106674](#) DOI: [10.1038/s41564-020-00813-8](#)]
  - 9 **To KK**, Tsang OT, Leung WS, Tam AR, Wu TC, Lung DC, Yip CC, Cai JP, Chan JM, Chik TS, Lau DP, Choi CY, Chen LL, Chan WM, Chan KH, Ip JD, Ng AC, Poon RW, Luo CT, Cheng VC, Chan JF, Hung IF, Chen Z, Chen H, Yuen KY. Temporal profiles of viral load in posterior oropharyngeal saliva samples and serum antibody responses during infection by SARS-CoV-2: an observational cohort study. *Lancet Infect Dis* 2020; **20**: 565-574 [PMID: [32213337](#) DOI: [10.1016/S1473-3099\(20\)30196-1](#)]
  - 10 **Moradi G**, Mohamadi Bolbanabad A, Ahmadi S, Aghaei A, Bahrami F, Veysi A, Nasiri Kalmarzi R, Shokri A, Ghaderi E, Mohsenpour B, Mohammadi A. Persistence assessment of SARS-CoV-2-specific IgG antibody in recovered COVID-19 individuals and its association with clinical symptoms and disease severity: A prospective longitudinal cohort study. *Int Immunopharmacol* 2021; **98**: 107893 [PMID: [34174700](#) DOI: [10.1016/j.intimp.2021.107893](#)]
  - 11 **Liu ZL**, Liu Y, Wan LG, Xiang TX, Le AP, Liu P, Peiris M, Poon LLM, Zhang W. Antibody Profiles in Mild and Severe Cases of COVID-19. *Clin Chem* 2020; **66**: 1102-1104 [PMID: [32521002](#) DOI: [10.1093/clinchem/hvaa137](#)]
  - 12 **Xiao K**, Yang H, Liu B, Pang X, Du J, Liu M, Liu Y, Jing X, Chen J, Deng S, Zhou Z, Yin L, Yan Y, Mou H, She Q. Antibodies Can Last for More Than 1 Year After SARS-CoV-2 Infection: A Follow-Up Study From Survivors of COVID-19. *Front Med (Lausanne)* 2021; **8**: 684864 [PMID: [34336891](#) DOI: [10.3389/fmed.2021.684864](#)]
  - 13 **Pang NY**, Pang AS, Chow VT, Wang DY. Understanding neutralising antibodies against SARS-CoV-2 and their implications in clinical practice. *Mil Med Res* 2021; **8**: 47 [PMID: [34465396](#) DOI: [10.1186/s40779-021-00342-3](#)]
  - 14 **Chen W**, Zhang J, Qin X, Wang W, Xu M, Wang LF, Xu C, Tang S, Liu P, Zhang L, Liu X, Zhang Y, Yi C, Hu Z, Yi Y. SARS-CoV-2 neutralizing antibody levels are correlated with severity of COVID-19 pneumonia. *Biomed Pharmacother* 2020; **130**: 110629 [PMID: [33406577](#) DOI: [10.1016/j.biopha.2020.110629](#)]
  - 15 **Legros V**, Denolly S, Vogrig M, Boson B, Siret E, Rigault J, Pillet S, Grattard F, Gonzalo S, Verhoeven P, Allatif O, Berthelot P, Pélissier C, Thierry G, Botelho-Nevers E, Millet G, Morel J, Paul S, Walzer T, Cosset FL, Bourlet T, Pozzetto B. A longitudinal study of SARS-CoV-2-infected patients reveals a high correlation between neutralizing antibodies and COVID-19 severity. *Cell Mol Immunol* 2021; **18**: 318-327 [PMID: [33408342](#) DOI: [10.1038/s41423-020-00588-2](#)]
  - 16 **Freund O**, Tau L, Weiss TE, Zornitzki L, Frydman S, Jacob G, Bornstein G. Associations of vaccine status with characteristics and outcomes of hospitalized severe COVID-19 patients in the booster era. *PLoS One* 2022; **17**: e0268050 [PMID: [35536849](#) DOI: [10.1371/journal.pone.0268050](#)]
  - 17 **Eroshenko N**, Gill T, Keaveney MK, Church GM, Trevejo JM, Rajaniemi H. Implications of antibody-dependent enhancement of infection for SARS-CoV-2 countermeasures. *Nat Biotechnol* 2020; **38**: 789-791 [PMID: [32504046](#) DOI: [10.1038/s41587-020-0577-1](#)]
  - 18 **Del Valle DM**, Kim-Schulze S, Huang HH, Beckmann ND, Nirenberg S, Wang B, Lavin Y, Swartz TH, Madduri D, Stock A, Marron TU, Xie H, Patel M, Tuballes K, Van Oekelen O, Rahman A, Kovatch P, Aberg JA, Schadt E, Jagannath S, Mazumdar M, Charney AW, Firpo-Betancourt A, Mendu DR, Jhang J, Reich D, Sigel K, Cordon-Cardo C, Feldmann M, Parekh S, Merad M, Gnjjatic S. An inflammatory cytokine signature predicts COVID-19 severity and survival. *Nat Med* 2020; **26**: 1636-1643 [PMID: [32839624](#) DOI: [10.1038/s41591-020-1051-9](#)]
  - 19 **Batra M**, Tian R, Zhang C, Clarence E, Sacher CS, Miranda JN, De La Fuente JRO, Mathew M, Green D, Patel S, Bastidas MVP, Haddadi S, Murthi M, Gonzalez MS, Kambali S, Santos KHM, Asif H, Modarresi F, Faghihi M, Mirsaedi M. Role of IgG against N-protein of SARS-CoV2 in COVID19 clinical outcomes. *Sci Rep* 2021; **11**: 3455 [PMID: [33568776](#) DOI: [10.1038/s41598-021-83108-0](#)]
  - 20 **Tan W**, Lu Y, Zhang J, Wang J, Dan Y, Tan Z, He X, Qian C, Sun Q, Hu Q, Liu H, Ye S, Xiang X, Zhou Y, Zhang W, Guo Y, Wang XH, He W, Wan X, Sun F, Wei Q, Chen C, Pan G, Xia J, Mao Q, Chen Y, Deng G. Viral Kinetics and Antibody Responses in Patients with COVID-19. *Infectious Diseases* 2020 [DOI: [10.1101/2020.03.24.20042382](#)]
  - 21 **Alimohamadi Y**, Sepandi M, Taghdir M, Hosamirudsari H. Determine the most common clinical symptoms in COVID-19 patients: a systematic review and meta-analysis. *J Prev Med Hyg* 2020; **61**: E304-E312 [PMID: [33150219](#) DOI: [10.15167/2421-4248/jpmh2020.61.3.1530](#)]
  - 22 **Huang C**, Wang Y, Li X, Ren L, Zhao J, Hu Y, Zhang L, Fan G, Xu J, Gu X, Cheng Z, Yu T, Xia J, Wei Y, Wu W, Xie X, Yin W, Li H, Liu M, Xiao Y, Gao H, Guo L, Xie J, Wang G, Jiang R, Gao Z, Jin Q, Wang J, Cao B. Clinical features of patients infected with 2019 novel coronavirus in Wuhan, China. *Lancet* 2020; **395**: 497-506 [PMID: [31986264](#) DOI: [10.1016/S0140-6736\(20\)30183-5](#)]
  - 23 **Tang F**, Zhang X, Zhang B, Zhu B, Wang J. A nomogram prediction of outcome in patients with COVID-19 based on individual characteristics incorporating immune response-related indicators. *J Med Virol* 2022; **94**: 131-140 [PMID: [34403145](#) DOI: [10.1002/jmv.27275](#)]
  - 24 **Xu Z**, Shi L, Wang Y, Zhang J, Huang L, Zhang C, Liu S, Zhao P, Liu H, Zhu L, Tai Y, Bai C, Gao T, Song J, Xia P, Dong J, Zhao J, Wang FS. Pathological findings of COVID-19 associated with acute respiratory distress syndrome. *Lancet Respir Med* 2020; **8**: 420-422 [PMID: [32085846](#) DOI: [10.1016/S2213-2600\(20\)30076-X](#)]
  - 25 **Yuki K**, Fujiogi M, Koutsogiannaki S. COVID-19 pathophysiology: A review. *Clin Immunol* 2020; **215**: 108427 [PMID: [32325252](#) DOI: [10.1016/j.clim.2020.108427](#)]
  - 26 **Cevik M**, Tate M, Lloyd O, Maraolo AE, Schafers J, Ho A. SARS-CoV-2, SARS-CoV, and MERS-CoV viral load dynamics, duration of viral shedding, and infectiousness: a systematic review and meta-analysis. *Lancet Microbe* 2021; **2**: e13-e22 [PMID: [33521734](#) DOI: [10.1016/S2666-5247\(20\)30172-5](#)]
  - 27 **Jackson CB**, Farzan M, Chen B, Choe H. Mechanisms of SARS-CoV-2 entry into cells. *Nat Rev Mol Cell Biol* 2022; **23**: 3-20 [PMID: [34611326](#) DOI: [10.1038/s41580-021-00418-x](#)]



- 28 **Dispinseri S**, Secchi M, Pirillo MF, Tolazzi M, Borghi M, Brigatti C, De Angelis ML, Baratella M, Bazzigaluppi E, Venturi G, Sironi F, Canitano A, Marzinotto I, Tresoldi C, Ciceri F, Piemonti L, Negri D, Cara A, Lampasona V, Scarlatti G. Neutralizing antibody responses to SARS-CoV-2 in symptomatic COVID-19 is persistent and critical for survival. *Nat Commun* 2021; **12**: 2670 [PMID: [33976165](#) DOI: [10.1038/s41467-021-22958-8](#)]
- 29 **Yu J**, Tostanoski LH, Peter L, Mercado NB, McMahan K, Mahrokhian SH, Nkolola JP, Liu J, Li Z, Chandrashekar A, Martinez DR, Loos C, Atyeo C, Fischinger S, Burke JS, Slein MD, Chen Y, Zuiani A, Lelis FJN, Travers M, Habibi S, Pessaint L, Van Ry A, Blade K, Brown R, Cook A, Finneyfrock B, Dodson A, Teow E, Velasco J, Zahn R, Wegmann F, Bondzie EA, Dagotto G, Gebre MS, He X, Jacob-Dolan C, Kirilova M, Kordana N, Lin Z, Maxfield LF, Nampanya F, Nityanandam R, Ventura JD, Wan H, Cai Y, Chen B, Schmidt AG, Wesemann DR, Baric RS, Alter G, Andersen H, Lewis MG, Barouch DH. DNA vaccine protection against SARS-CoV-2 in rhesus macaques. *Science* 2020; **369**: 806-811 [PMID: [32434945](#) DOI: [10.1126/science.abc6284](#)]
- 30 **Folegatti PM**, Ewer KJ, Aley PK, Angus B, Becker S, Belij-Rammerstorfer S, Bellamy D, Bibi S, Bittaye M, Clutterbuck EA, Dold C, Faust SN, Finn A, Flaxman AL, Hallis B, Heath P, Jenkin D, Lazarus R, Makinson R, Minassian AM, Pollock KM, Ramasamy M, Robinson H, Snape M, Tarrant R, Voysey M, Green C, Douglas AD, Hill AVS, Lambe T, Gilbert SC, Pollard AJ, Oxford COVID Vaccine Trial Group. Safety and immunogenicity of the ChAdOx1 nCoV-19 vaccine against SARS-CoV-2: a preliminary report of a phase 1/2, single-blind, randomised controlled trial. *Lancet* 2020; **396**: 467-478 [PMID: [32702298](#) DOI: [10.1016/S0140-6736\(20\)31604-4](#)]
- 31 **Lucas C**, Klein J, Sundaram M, Liu F, Wong P, Silva J, Mao T, Oh JE, Tokuyama M, Lu P, Venkataraman A, Park A, Israelow B, Wyllie AL, Vogels CBF, Muenker MC, Casanovas-Massana A, Schulz WL, Zell J, Campbell M, Fournier JB, Grubaugh ND, Farhadian S, Wisniewski AV, Cruz CD, Omer S, Ko AI, Ring A, Iwasaki A. Kinetics of antibody responses dictate COVID-19 outcome. *medRxiv* 2020 [PMID: [33398304](#) DOI: [10.1101/2020.12.18.20248331](#)]
- 32 **Lau EHY**, Tsang OTY, Hui DSC, Kwan MYW, Chan WH, Chiu SS, Ko RLW, Chan KH, Cheng SMS, Perera RAPM, Cowling BJ, Poon LLM, Peiris M. Neutralizing antibody titres in SARS-CoV-2 infections. *Nat Commun* 2021; **12**: 63 [PMID: [33397909](#) DOI: [10.1038/s41467-020-20247-4](#)]
- 33 **Chakraborty S**, Gonzalez J, Edwards K, Mallajosyula V, Buzzanco AS, Sherwood R, Buffone C, Kathale N, Providenza S, Xie MM, Andrews JR, Blish CA, Singh U, Dugan H, Wilson PC, Pham TD, Boyd SD, Nadeau KC, Pinsky BA, Zhang S, Memoli MJ, Taubenberger JK, Morales T, Schapiro JM, Tan GS, Jagannathan P, Wang TT. Proinflammatory IgG Fc structures in patients with severe COVID-19. *Nat Immunol* 2021; **22**: 67-73 [PMID: [33169014](#) DOI: [10.1038/s41590-020-00828-7](#)]
- 34 **Ponti G**, Maccaferri M, Ruini C, Tomasi A, Ozben T. Biomarkers associated with COVID-19 disease progression. *Crit Rev Clin Lab Sci* 2020; **57**: 389-399 [PMID: [32503382](#) DOI: [10.1080/10408363.2020.1770685](#)]
- 35 **Xiao AT**, Gao C, Zhang S. Profile of specific antibodies to SARS-CoV-2: The first report. *J Infect* 2020; **81**: 147-178 [PMID: [32209385](#) DOI: [10.1016/j.jinf.2020.03.012](#)]
- 36 **Sun H**, Ning R, Tao Y, Yu C, Deng X, Zhao C, Meng S, Tang F, Xu D. Risk Factors for Mortality in 244 Older Adults With COVID-19 in Wuhan, China: A Retrospective Study. *J Am Geriatr Soc* 2020; **68**: E19-E23 [PMID: [32383809](#) DOI: [10.1111/jgs.16533](#)]
- 37 **Collaborative TO**, Williamson E, Walker AJ, Bhaskaran K, Bacon S, Bates C, Morton CE, Curtis HJ, Mehrkar A, Evans D, Inglesby P, Cockburn J, McDonald HI, MacKenna B, Tomlinson L, Douglas IJ, Rentsch CT, Mathur R, Wong A, Grieve R, Harrison D, Forbes H, Schultze A, Croker R, Parry J, Hester F, Harper S, Perera R, Evans S, Smeeth L, Goldacre B. OpenSAFELY: factors associated with COVID-19-related hospital death in the linked electronic health records of 17 million adult NHS patients. Published online, 2020 [DOI: [10.1101/2020.05.06.20092999](#)]



Published by **Baishideng Publishing Group Inc**  
7041 Koll Center Parkway, Suite 160, Pleasanton, CA 94566, USA

**Telephone:** +1-925-3991568

**E-mail:** [bpgoffice@wjgnet.com](mailto:bpgoffice@wjgnet.com)

**Help Desk:** <https://www.f6publishing.com/helpdesk>

<https://www.wjgnet.com>

