

World Journal of *Radiology*

World J Radiol 2017 April 28; 9(4): 148-216



**EDITORIAL**

- 148 New era of electronic brachytherapy
Ramachandran P

REVIEW

- 155 "Beyond saving lives": Current perspectives of interventional radiology in trauma
Singh A, Kumar A, Kumar P, Kumar S, Gamanagatti S

MINIREVIEWS

- 178 Imaging spectrum of spinal dysraphism on magnetic resonance: A pictorial review
Kumar J, Afsal M, Garg A

ORIGINAL ARTICLE**Basic Study**

- 191 Segmentations of the cartilaginous skeletons of chondrichthyan fishes by the use of state-of-the-art computed tomography
McQuiston AD, Crawford C, Schoepf UJ, Varga-Szemes A, Canstein C, Renker M, De Cecco CN, Baumann S, Naylor GJP
- 199 Gd-EOB-DTPA based magnetic resonance imaging for predicting liver response to portal vein embolization
Szklaruk J, Luersen G, Ma J, Wei W, Underwood M

Retrospective Study

- 206 C-reactive protein and radiographic findings of lower respiratory tract infection in infants
Twomey M, Fleming H, Moloney F, Murphy KP, Crush L, O'Neill SB, Flanagan O, James K, Bogue C, O'Connor OJ, Maher MM
- 212 Computed tomography-guided catheter drainage with urokinase and ozone in management of empyema
Li B, Liu C, Li Y, Yang HF, Du Y, Zhang C, Zheng HJ, Xu XX

ABOUT COVER

Editorial Board Member of *World Journal of Radiology*, Cher Heng Tan, MD, Assistant Professor, Department of Diagnostic Radiology, Tan Tock Seng Hospital, Singapore 308433, Singapore

AIM AND SCOPE

World Journal of Radiology (*World J Radiol*, *WJR*, online ISSN 1949-8470, DOI: 10.4329) is a peer-reviewed open access academic journal that aims to guide clinical practice and improve diagnostic and therapeutic skills of clinicians.

WJR covers topics concerning diagnostic radiology, radiation oncology, radiologic physics, neuroradiology, nuclear radiology, pediatric radiology, vascular/interventional radiology, medical imaging achieved by various modalities and related methods analysis. The current columns of *WJR* include editorial, frontier, diagnostic advances, therapeutics advances, field of vision, mini-reviews, review, topic highlight, medical ethics, original articles, case report, clinical case conference (clinicopathological conference), and autobiography.

We encourage authors to submit their manuscripts to *WJR*. We will give priority to manuscripts that are supported by major national and international foundations and those that are of great basic and clinical significance.

INDEXING/ABSTRACTING

World Journal of Radiology is now indexed in PubMed, PubMed Central, and Emerging Sources Citation Index(Web of Science).

FLYLEAF

I-III Editorial Board

EDITORS FOR THIS ISSUE

Responsible Assistant Editor: *Xiang Li*
Responsible Electronic Editor: *Huan-Liang Wu*
Proofing Editor-in-Chief: *Lian-Sheng Ma*

Responsible Science Editor: *Fang-Fang Ji*
Proofing Editorial Office Director: *Xiu-Xia Song*

NAME OF JOURNAL
World Journal of Radiology

ISSN
ISSN 1949-8470 (online)

LAUNCH DATE
January 31, 2009

FREQUENCY
Monthly

EDITORS-IN-CHIEF
Kai U Juergens, MD, Associate Professor, MRT und PET/CT, Nuklearmedizin Bremen Mitte, ZEMODI - Zentrum für morphologische und molekulare Diagnostik, Bremen 28177, Germany

Edwin JR van Beek, MD, PhD, Professor, Clinical Research Imaging Centre and Department of Medical Radiology, University of Edinburgh, Edinburgh EH16 4TJ, United Kingdom

Thomas J Vogl, MD, Professor, Reader in Health Technology Assessment, Department of Diagnostic and Interventional Radiology, Johann Wolfgang Goethe University of Frankfurt, Frankfurt 60590,

Germany

EDITORIAL BOARD MEMBERS
All editorial board members resources online at <http://www.wjgnet.com/1949-8470/editorialboard.htm>

EDITORIAL OFFICE
Xiu-Xia Song, Director
World Journal of Radiology
Baishideng Publishing Group Inc
7901 Stoneridge Drive, Suite 501, Pleasanton, CA 94588, USA
Telephone: +1-925-2238242
Fax: +1-925-2238243
E-mail: editorialoffice@wjgnet.com
Help Desk: <http://www.f6publishing.com/helpdesk>
<http://www.wjgnet.com>

PUBLISHER
Baishideng Publishing Group Inc
7901 Stoneridge Drive, Suite 501, Pleasanton, CA 94588, USA
Telephone: +1-925-2238242
Fax: +1-925-2238243
E-mail: bpgoffice@wjgnet.com
Help Desk: <http://www.f6publishing.com/helpdesk>
<http://www.wjgnet.com>

PUBLICATION DATE
April 28, 2017

COPYRIGHT
© 2017 Baishideng Publishing Group Inc. Articles published by this Open-Access journal are distributed under the terms of the Creative Commons Attribution Non-commercial License, which permits use, distribution, and reproduction in any medium, provided the original work is properly cited, the use is non commercial and is otherwise in compliance with the license.

SPECIAL STATEMENT
All articles published in journals owned by the Baishideng Publishing Group (BPG) represent the views and opinions of their authors, and not the views, opinions or policies of the BPG, except where otherwise explicitly indicated.

INSTRUCTIONS TO AUTHORS
<http://www.wjgnet.com/bpg/gerinfo/204>

ONLINE SUBMISSION
<http://www.f6publishing.com>

Retrospective Study

C-reactive protein and radiographic findings of lower respiratory tract infection in infants

Maria Twomey, Hannah Fleming, Fiachra Moloney, Kevin P Murphy, Lee Crush, Siobhan B O'Neill, Oisín Flanagan, Karl James, Conor Bogue, Owen J O'Connor, Michael M Maher

Maria Twomey, Hannah Fleming, Fiachra Moloney, Kevin P Murphy, Lee Crush, Siobhan B O'Neill, Oisín Flanagan, Karl James, Conor Bogue, Owen J O'Connor, Michael M Maher, Department of Radiology, Cork University Hospital, Wilton, T12 DC4A Cork, Ireland

Author contributions: Twomey M drafted the manuscript; Fleming H collected the data and drafted the manuscript; Moloney F collected data and performed statistical analysis; Murphy KP collected the data; Crush L collected data and reported the chest radiographs; O'Neill SB collected the data and performed data analysis; Flanagan O was involved in data analysis, drafting the manuscript and editing; James K redrafted and revised the manuscript, created the audio file and added supplementary comments; Bogue C edited the manuscript; O'Connor OJ edited the manuscript; Maher MM designed the research study and oversaw all aspects of the study.

Institutional review board statement: The study was reviewed and approved by the Cork Clinical Research Ethics Committee, Lancaster Hall, Cork, Ireland.

Informed consent statement: Informed consent was not deemed necessary for this study. Clinical and radiological data was collected retrospectively in an anonymised fashion and no patient underwent additional procedures or investigations as a result of recruitment to the study. Ethical approval was granted without a requirement for informed consent.

Conflict-of-interest statement: All authors wish to declare no conflicts of interest.

Data sharing statement: The technical appendix, statistical code, and dataset are available from the corresponding author at drkarl.james@outlook.com. Informed consent was not obtained but the presented data are anonymised and the risk of identification is low.

Open-Access: This article is an open-access article which was selected by an in-house editor and fully peer-reviewed by external reviewers. It is distributed in accordance with the Creative Commons Attribution Non Commercial (CC BY-NC 4.0) license, which permits others to distribute, remix, adapt, build upon this

work non-commercially, and license their derivative works on different terms, provided the original work is properly cited and the use is non-commercial. See: <http://creativecommons.org/licenses/by-nc/4.0/>

Manuscript source: Unsolicited manuscript

Correspondence to: Karl James, FFR RCSI, Department of Radiology, Cork University Hospital, 1 Bishopstown Road, Wilton, T12 DC4A Cork, Ireland. drkarl.james@outlook.com
Telephone: +353-021-4920288
Fax: +353-021-4922002

Received: June 14, 2016

Peer-review started: June 17, 2016

First decision: July 27, 2016

Revised: August 10, 2016

Accepted: October 17, 2016

Article in press: October 18, 2016

Published online: April 28, 2017

Abstract

AIM

To evaluate the association between C-reactive protein (CRP) and radiological evidence of lower respiratory tract infection (LRTI) in infants.

METHODS

All patients aged less than 4 years who presented with suspected lower respiratory tract infection, who received a peri-presentation chest radiograph and CRP blood measurement over an 18-mo period were included in the study. Age, gender, source of referral, CRP, white cell count, neutrophil count along with the patients' symptoms and radiologist's report were recorded.

RESULTS

Three hundred and eleven patients met the inclusion

criteria. Abnormal chest radiographs were more common in patients with elevated CRP levels ($P < 0.01$). Radiologic signs of LRTI were identified in 73.7% of chest radiographs when a patient had a CRP level between 50-99 mg/L. CRP levels were a better predictor of positive chest radiograph findings for those aged greater than 1 year compared to those 1 year or less.

CONCLUSION

CRP may be used in patients with suspected LRTI diagnosis to select those who are likely to have positive findings on chest radiograph, thus reducing unnecessary chest radiographs.

Key words: Chest radiograph; C-reactive protein; Chest infection; Respiratory infection; Pediatric

© The Author(s) 2017. Published by Baishideng Publishing Group Inc. All rights reserved.

Core tip: Abnormal chest radiograph findings are significantly more common in patients with elevated C-reactive protein (CRP) levels. Young children are most likely to have abnormal chest radiograph findings if they have all three of the following; a CRP level of 50-99 mg/L, respiratory symptoms and if they are aged greater than 1 year.

Twomey M, Fleming H, Moloney F, Murphy KP, Crush L, O'Neill SB, Flanagan O, James K, Bogue C, O'Connor OJ, Maher MM. C-reactive protein and radiographic findings of lower respiratory tract infection in infants. *World J Radiol* 2017; 9(4): 206-211 Available from: URL: <http://www.wjgnet.com/1949-8470/full/v9/i4/206.htm> DOI: <http://dx.doi.org/10.4329/wjr.v9.i4.206>

INTRODUCTION

Despite the very low effective dose imparted during the acquisition of a chest radiograph this investigation is common and may be subject to excessive and unjustified use. Children have a greater risk of cancer when exposed to diagnostic ionizing radiation due to their larger proportion of dividing cells and also due to their longer life expectancy during which a potential radiation induced cancer can be expressed^[1-3]. Post natal exposure to diagnostic ionizing radiation is associated with an increased risk of childhood acute lymphoblastic leukaemia^[1] and brain neoplasms^[3] and therefore use of all diagnostic imaging modalities which employ ionizing radiation should be limited and justified in young patients. There is also the issue of cost associated with performance of unnecessary radiological tests and also the issue of stress to patients and parents of performing radiological examinations in infants and young children.

In addition to chest radiography, non-specific serum inflammatory markers are commonly requested in

paediatric patients with suspected lower respiratory tract infection (LRTI). Measurement of C-reactive protein (CRP) in these patients is commonplace and often helps to substantiate the clinical diagnosis, to establish the severity of infection and in some cases to monitor the therapeutic management of LRTI^[4-11]. Routinely measured CRP levels may potentially be of additional clinical use to physicians and radiologists if they could aid in the selection and justification of performance of chest radiography in the setting of infantile lower respiratory tract infection. No previous study has examined the association between CRP and objective radiological evidence of LRTI in infants. Therefore we designed a retrospective study to determine whether an increased CRP level in paediatric patients presenting with acute respiratory symptoms, is associated with abnormal findings on chest radiography and to determine if other haematological and clinical parameters may additionally predict the presence of chest radiograph abnormalities.

MATERIALS AND METHODS

This institutional ethical review board approved, retrospective study was conducted between January 2009 and August 2011. Infants aged between 28 d and 4 years who presented to a single institution with clinically suspected lower respiratory tract infection and who had undergone chest radiography and CRP blood measurement within a 24-h period were included in the study. Patients with chronic lung diseases such as cystic fibrosis were excluded from the study. Presenting symptoms were recorded from the patient medical records for each patient and CRP level, white cell count and neutrophil count were recorded in all cases from the hospital electronic laboratory database. The presence of consolidation, pneumonic infiltrates, bronchial wall thickening, peribronchial cuffing, collapse or effusion were retrospectively recorded in each case by 2 reviewers in consensus (HF, 2-year experience; SON, 4-year experience) following examination of the radiology reports in an unblinded fashion. The CRP level in all patients was measured in mg/L (normal 0-5 mg/L) using the Beckman Coulter Latex Enhanced Turbidometric assay.

Statistical analysis

Data analysis involved the use of both descriptive and inferential statistics using SPSS 17 (IBM Computers, New York, United States). Descriptive methods employed included one-way and two-way frequencies along with mean and standard deviation. Inferential statistics consisted of χ^2 tests and t tests. Correlation coefficient tests explored the relationship between quantitative measures. A threshold P value below 0.05 was deemed as statistically significant. Numerical averages are presented as mean \pm SD unless otherwise stated.

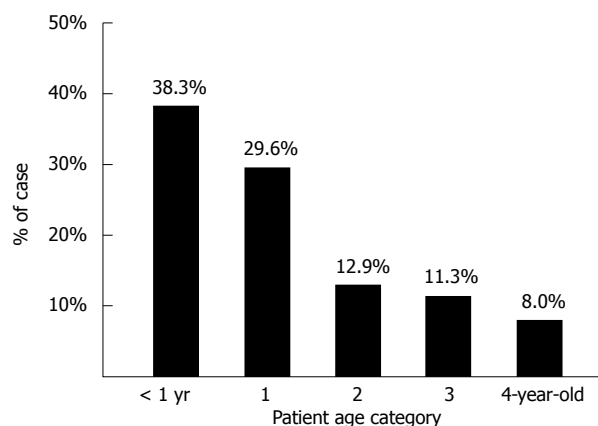


Figure 1 Age distribution of patient cohort.

RESULTS

Three hundred and eleven patients were included in the study. There were 164 males (52.7%) and 147 females (47.3%) with ages ranging from 28 d to 4 years (mean age 1.2 years \pm 1.3) (Figure 1). The distribution of age was very similar for both genders, with females being just slightly older (1.3 \pm 1.3 years) than males (1.1 \pm 1.3 years).

Over half of all cases (53.2%) had been admitted directly to hospital following general practitioner (GP) referral, 37.2% were from the emergency department (ED) and the remaining 9.6% were outpatients. Patients aged less than one year of age were significantly more likely to be inpatients ($P < 0.01$). Forty-seven point five percent of all children who were inpatients were aged less than one year whereas 17.2% of all outpatients and 33% of all ED cases were in this age category. Outpatients were on average over double the age of inpatient cases. This age discrepancy by location is likely explained by a high rate of direct hospital admissions following GP referral, for younger patients as per hospital policy.

Twenty-five point one percent of all CRP measurements were in the "normal" range (0-5 mg/L), 40.2% were in the range 5-49 mg/L, 18.3% were in the 50-99 mg/L range and 16.4% of patients had a CRP of greater than 100 mg/L (Table 1).

Fifty point four percent had both respiratory and systemic symptoms whereas 24.8% had respiratory symptoms alone. The remainder (24.8%) had no respiratory symptoms and CRP and chest radiograph were performed for investigation of fever. CRP levels were significantly higher in patients with systemic symptoms (68.6 \pm 86.2 mg/L vs 32.7 \pm 55.2 mg/L) ($P < 0.01$). Patients who were seen initially in the ED had statistically significant lower CRP readings (28.5 \pm 38.6 mg/L) than inpatients (57.8 \pm 66.0 mg/L) ($P < 0.001$) or outpatients (74.6 \pm 108.6 mg/L) ($P < 0.001$). This could reflect lower threshold for performance of chest radiography in the ED setting.

Serum white cell count (WCC) (normal range:

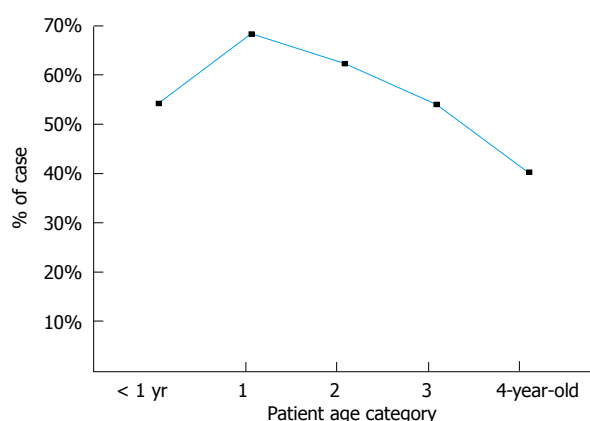


Figure 2 Rate of radiographic evidence of lower respiratory tract infection according to patient age.

4-11 $\times 10^9$ /L) ranged from 3.1-55.6 $\times 10^9$ /L, with a mean of 13.9 \pm 7.2 $\times 10^9$ /L. Serum neutrophil levels (normal range: 1.8-8 $\times 10^9$ /L) ranged from 0.6 to 38.1 $\times 10^9$ /L with a mean of 8.2 \pm 5.7 $\times 10^9$ /L. There was no significant difference in WCC or neutrophil counts between inpatient, outpatients and ED patients. CRP levels correlated positively and strongly with WCC and neutrophil counts ($P < 0.001$).

Fifty-eight point five percent of all chest radiographs were abnormal and abnormal findings were most frequently encountered in 1-year-old patients (68.5%) (Figure 2). Abnormal chest radiograph findings were significantly more common in patients with elevated CRP levels ($P < 0.01$) (Figure 3). However, when patients were sub-grouped according to their age it was found that an elevated CRP level was significantly predictive of an abnormal findings on chest radiography in patients greater than 1 year of age ($P < 0.01$) but was not predictive of an abnormal chest radiograph in patients aged less than 1 year of age ($P = 0.56$). It is worth noting that a CRP of > 100 mg/L was less predictive of an abnormal chest radiograph than a CRP level of 55-99 mg/L (Figure 3). This was especially true in patients under one year of age where only 37.5% of chest radiographs were positive when the CRP exceeded 100 mg/L (Figure 4). Interestingly WCC and neutrophil counts were not predictive of an abnormal chest radiograph across the entire cohort or in sub-groups aged less than or greater than 1 year.

The presence of respiratory symptoms (cough, wheeze, tachypnea, respiratory distress, dyspnoea) was more predictive of an abnormal chest radiograph than systemic symptoms alone (Figure 5). Infants aged less than one year with both respiratory symptoms and elevated CRP levels of 50-99 mg/L, were significantly more likely to have an abnormal chest radiograph ($P < 0.01$) (Figure 5). The combination of these 2 elements yielded a positive predictive value (PPV) of 62% for an abnormal chest radiograph whereas the absence of either had a negative predictive value (NPV) of 62%. Those aged 1-4 years presenting with both respiratory

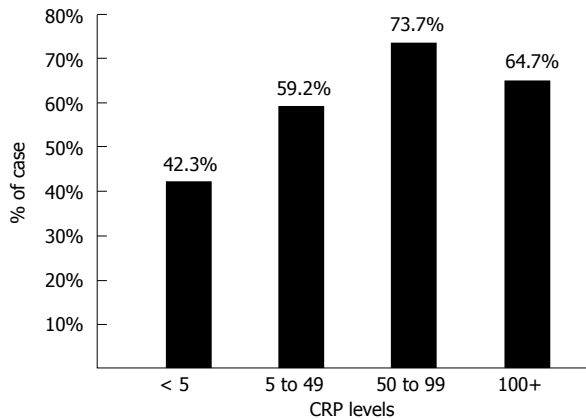


Figure 3 Rate of radiographic evidence of lower respiratory tract infection according to patient C-reactive protein levels. CRP: C-reactive protein.

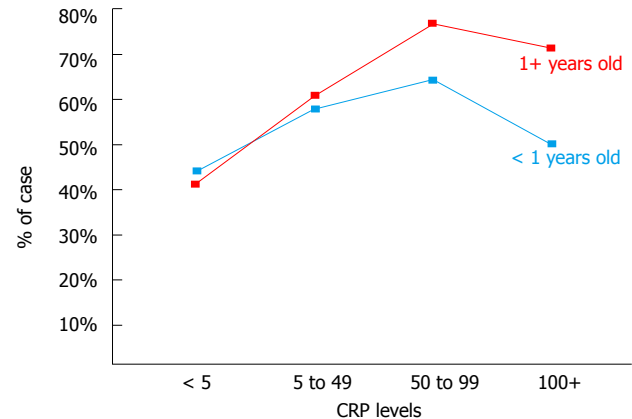


Figure 4 Rate of radiographic evidence of lower respiratory tract infection according to patient age and C-reactive protein level. CRP: C-reactive protein.

Table 1 Distribution of C-reactive protein levels in the patient cohort

CRP category (mg/L)	Frequency (n)	Percentage
< 5	78	25.1
5-49	125	40.2
50-99	57	18.3
> 100	51	16.4

CRP: C-reactive protein.

symptoms and a CRP of 50-99 mg/L had a PPV of 64% for an abnormal chest radiograph and the absence of either yielded a NPV of 75% for chest radiograph findings.

DISCUSSION

The major finding of our study is that abnormal chest radiograph findings were significantly more common in patients with elevated CRP levels. This finding suggests that CRP levels may predict findings on chest radiographs in infants with suspected LRTI. A CRP range of 50-99 mg/L was most predictive of an abnormal chest radiograph. We also found that patients who were less than 1 year frequently have normal chest radiographs in the presence of CRP level elevations above 100 mg/L. This finding may be explained by the fact that the presenting complaints of patients aged less than 1 year may often be non-specific and possibly that those aged less than one year have an increased likelihood of having other possible infectious pathologies such as gastroenteritis or urinary tract infection, which are both common in this age group. The presence of respiratory symptoms was, as expected, a predictor of positive chest radiograph findings along with systemic symptoms. Patients aged greater than 1 year were also more likely to yield a finding on chest radiograph.

A single prospective case control study by Almirall *et al.*^[12] of patients greater than 14 years complements our own results by finding that CRP was an independent

predictor of LRTI. It concluded that a serum CRP level > 33 mg/L can differentiate patients with true alveolar infection from patients with LRTI other than pneumonia. In our study, patients with a CRP of > 33 mg/L had a 68.2% likelihood of an abnormal chest radiograph, as opposed to a 24.7% chance of a normal radiograph. A CRP level of < 33 mg/L in children aged 1 to 4 had an NPV of 50% in predicting a normal chest radiograph. Almirall *et al.*^[12] also found that patients requiring inpatient care had higher CRP levels than outpatients and that CRP levels varied significantly with patient age in keeping with our findings.

In another study involving the adult population, Hopstaken *et al.*^[7] found that both ESR and CRP had a higher odds ratio at predicting pneumonia than clinical signs alone and therefore concluded that CRP along with clinical signs had sufficient sensitivity to predict the presence of LRTI. The authors of that study advise that it may be possible to safely withhold antibiotic treatment in adult patients with a CRP value of < 20 mg/L among other criteria. Again, this complements our findings in a pediatric setting, which suggest that a normal CRP may negate the need for chest radiography in patients aged 1 to 4, particularly in the absence of respiratory symptoms. Chest radiograph omission would have a beneficial impact in terms of radiation dose reduction to infants and their parents, workload reduction for radiographers/radiology technicians in a cohort of patients in which chest radiography can be challenging, decreased stress to sick infants and reduced economic costs.

Numerous previous studies examined the utility of non-specific inflammatory markers such as CRP and findings on chest radiographs in determining the nature of the infectious pathogen responsible for LRTI. These studies found little or no value of CRP levels or chest radiograph findings in the differentiation between bacterial and viral pneumonia^[4,5,10,11]. As a result of these previous studies, attempts at differentiating between viral and bacterial pathogens was not undertaken in our study.

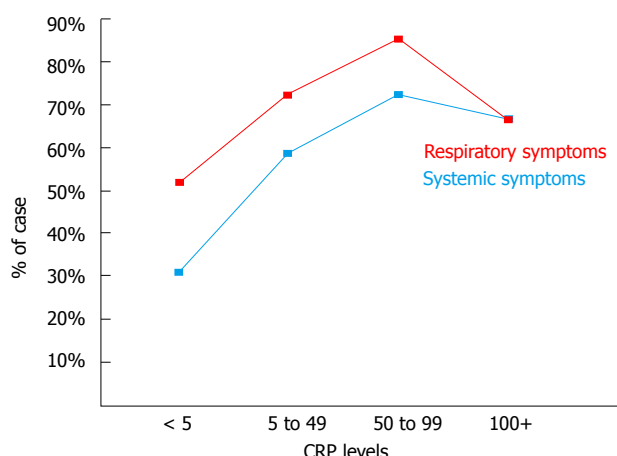


Figure 5 Rate of radiographic evidence of lower respiratory tract infection according to patient symptoms and C-reactive protein level. CRP: C-reactive protein.

The issue of investigation and management of community-acquired pneumonia (CAP) in children has been extensively investigated recently. Recent studies, including a study by Neuman *et al.*^[13], have investigated the use of investigations including chest radiography and subsequent management of children presenting to hospital with CAP. The study investigated a mean of 375000 ED visits for CAP annually, during the study period from 2001-2009. Among children discharged from EDs with CAP, full blood count was performed during 30% of visits, chest radiography during 83%, and viral testing in only 13%^[13]. A recommendation from the study was that efforts should be made to reduce the performance of certain diagnostic testing, such as a full blood count and chest radiography^[13]. Another very recent study by Florin *et al.*^[14] examined variability across hospitals in diagnostic test utilisation for children diagnosed with CAP during ED evaluation and to determine if test utilisation is associated with hospitalisation and ED revisits. This study analysed a total of 100615 ED visits were analysed. Full blood count (28.7%), blood culture (27.9%), and chest radiograph (75.7%) were the most commonly ordered ED diagnostic tests. There was significant variation in the utilisation of these investigations between hospitals. An interesting finding was that hospitals, which had increased rates of utilisation of these investigations, had increased likelihood of hospital admission compared to hospitals that utilised these investigations less frequently. However, ED revisits between the low- and high-utilising hospitals were not significant. The study concluded that an opportunity exists to reduce diagnostic testing for CAP without negatively affecting outcomes^[14]. Recently, the Pediatric Infectious Diseases Society, have published guidelines on the management of CAP in infants and children older than 3 mo of age^[15]. These guidelines suggest that routine chest radiographs are not necessary for the confirmation of suspected CAP in patients well enough to be treated in the outpatient setting and that chest radiography (posteroanterior and lateral)

should only be obtained in children with suspected or documented hypoxemia or significant respiratory distress and in those with failed initial antibiotic therapy, to verify the presence or absence of complications of pneumonia, including parapneumonic effusions, necrotising pneumonia, and pneumothorax^[15]. The findings of our study would suggest that serum CRP levels may play a role in guiding the decision of whether to perform or not perform a chest radiograph in this setting.

Limitations of our study include the retrospective design and that reviewers retrospectively analysed chest radiograph reports and findings. Prospective data collection may be more applicable in normal clinical practice than double or consensus read interpretations. Although CRP elevation is a useful biomarker for infection in the immunocompromised patient^[16], we did not attempt to identify and separate individuals who might be particularly at risk of complications from a respiratory tract infection (such as those with immunodeficiency) and we cannot confidently state that our findings apply to children with a known history of immunodeficiency or malignancy. Ideally, further studies in a larger cohort of patients should be considered to evaluate the role of CRP in the triage and justification of chest radiography in the diagnosis and follow-up of LRTI in the infant population.

In conclusion, this study found that abnormal chest radiograph findings were significantly more common in patients with elevated CRP levels. Young children are most likely to have abnormal chest radiograph findings if they have all three of the following; a CRP level of 50-99 mg/L, respiratory symptoms and if they are aged greater than 1 year. We found no association between an abnormal chest radiograph and elevated WCC and neutrophil count.

COMMENTS

Background

There is an on-going and laudable drive to lower patient exposure to ionising radiation whenever possible. This is especially true when dealing with infants and young children who are at higher risk of malignancy from ionising radiation exposure. The authors acknowledge that the radiation exposure associated with chest radiography is very low. There is however, also the issue of cost associated with performance of unnecessary radiological tests and also the issue of stress to patient and parents of performing radiological examinations in infants and young children. For those reasons, the performance of radiological studies should be limited to clinical situations where it will aid diagnosis or alter management in a young patient cohort. The authors undertook a retrospective study to examine the relationship between serum C-reactive protein (CRP) levels to abnormal findings on chest radiographs to ascertain if raised CRP levels could predict abnormal chest radiograph findings.

Research frontiers

A previous study in adults had shown that low CRP levels could help predict those that require antibiotic treatment for lower respiratory tract infection. No previous studies have looked at using CRP levels in a pediatric population to predict those that may or may not require chest radiography.

Innovations and breakthroughs

The results of this study found that children aged between 1-4 with an elevated CRP were significantly more likely to have an abnormal chest radiograph.

Conversely, the negative predictive value of a normal CRP in a patient with respiratory symptoms or a raised CRP without respiratory symptoms in this age group was 75%.

Applications

The authors' findings may help guide clinicians regarding the need to perform chest imaging when dealing with a child presenting with respiratory symptoms but without hypoxaemia or severe respiratory distress. The ultimate goal being the reduction of unnecessary ionising radiation exposure and reducing cost and potential stress to young patients and their parents.

Terminology

CRP is an acute phase protein released into the blood stream from the liver under the influence of circulating interleukin-6, secreted by T-cell and macrophages. It is used as a marker for inflammation.

Peer-review

The authors investigated CRP and radiographic findings of lower respiratory tract infection in infants. It is a well written paper.

REFERENCES

- 1 **Bartley K**, Metayer C, Selvin S, Ducore J, Buffler P. Diagnostic X-rays and risk of childhood leukaemia. *Int J Epidemiol* 2010; **39**: 1628-1637 [PMID: 20889538 DOI: 10.1093/ije/dyq162]
- 2 **Brenner DJ**, Hall EJ. Computed tomography--an increasing source of radiation exposure. *N Engl J Med* 2007; **357**: 2277-2284 [PMID: 18046031 DOI: 10.1056/NEJMr072149]
- 3 **Pearce MS**, Salotti JA, Little MP, McHugh K, Lee C, Kim KP, Howe NL, Ronckers CM, Rajaraman P, Sir Craft AW, Parker L, Berrington de González A. Radiation exposure from CT scans in childhood and subsequent risk of leukaemia and brain tumours: a retrospective cohort study. *Lancet* 2012; **380**: 499-505 [PMID: 22681860 DOI: 10.1016/S0140-6736(12)60815-0]
- 4 **Clark JE**, Hammal D, Spencer D, Hampton F. Children with pneumonia: how do they present and how are they managed? *Arch Dis Child* 2007; **92**: 394-398 [PMID: 17261579 DOI: 10.1136/adc.2006.097402]
- 5 **Don M**, Valent F, Korppi M, Canciani M. Differentiation of bacterial and viral community-acquired pneumonia in children. *Pediatr Int* 2009; **51**: 91-96 [PMID: 19371285 DOI: 10.1111/j.1442-200X.2008.02678.x]
- 6 **Esposito S**, Bosis S, Cavagna R, Faelli N, Begliatti E, Marchisio P, Blasi F, Bianchi C, Principi N. Characteristics of Streptococcus pneumoniae and atypical bacterial infections in children 2-5 years of age with community-acquired pneumonia. *Clin Infect Dis* 2002; **35**: 1345-1352 [PMID: 12439797 DOI: 10.1086/344191]
- 7 **Hopstaken RM**, Muris JW, Knottnerus JA, Kester AD, Rinkens PE, Dinant GJ. Contributions of symptoms, signs, erythrocyte sedimentation rate, and C-reactive protein to a diagnosis of pneumonia in acute lower respiratory tract infection. *Br J Gen Pract* 2003; **53**: 358-364 [PMID: 12830562]
- 8 **Korppi M**, Heiskanen-Kosma T, Leinonen M. White blood cells, C-reactive protein and erythrocyte sedimentation rate in pneumococcal pneumonia in children. *Eur Respir J* 1997; **10**: 1125-1129 [PMID: 9163657 DOI: 10.1183/09031936.97.10051125]
- 9 **Korppi M**. Non-specific host response markers in the differentiation between pneumococcal and viral pneumonia: what is the most accurate combination? *Pediatr Int* 2004; **46**: 545-550 [PMID: 15491381 DOI: 10.1111/j.1442-200X.2004.01947.x]
- 10 **Nohynek H**, Valkeila E, Leinonen M, Eskola J. Erythrocyte sedimentation rate, white blood cell count and serum C-reactive protein in assessing etiologic diagnosis of acute lower respiratory infections in children. *Pediatr Infect Dis J* 1995; **14**: 484-490 [PMID: 7667052]
- 11 **Virkki R**, Juven T, Rikalainen H, Svedström E, Mertsola J, Ruuskanen O. Differentiation of bacterial and viral pneumonia in children. *Thorax* 2002; **57**: 438-441 [PMID: 11978922 DOI: 10.1136/thorax.57.5.438]
- 12 **Almirall J**, Bolibar I, Toran P, Pera G, Boquet X, Balanzó X, Sauca G. Contribution of C-reactive protein to the diagnosis and assessment of severity of community-acquired pneumonia. *Chest* 2004; **125**: 1335-1342 [PMID: 15078743]
- 13 **Neuman MI**, Shah SS, Shapiro DJ, Hersh AL. Emergency department management of childhood pneumonia in the United States prior to publication of national guidelines. *Acad Emerg Med* 2013; **20**: 240-246 [PMID: 23517255 DOI: 10.1111/acem.12088]
- 14 **Florin TA**, French B, Zorc JJ, Alpern ER, Shah SS. Variation in emergency department diagnostic testing and disposition outcomes in pneumonia. *Pediatrics* 2013; **132**: 237-244 [PMID: 23878049 DOI: 10.1542/peds.2013-0179]
- 15 **Bradley JS**, Byington CL, Shah SS, Alverson B, Carter ER, Harrison C, Kaplan SL, Mace SE, McCracken GH, Moore MR, St Peter SD, Stockwell JA, Swanson JT. The management of community-acquired pneumonia in infants and children older than 3 months of age: clinical practice guidelines by the Pediatric Infectious Diseases Society and the Infectious Diseases Society of America. *Clin Infect Dis* 2011; **53**: e25-e76 [PMID: 21880587 DOI: 10.1093/cid/cir531]
- 16 **Pepys MB**, Hirschfield GM. C-reactive protein: a critical update. *J Clin Invest* 2003; **111**: 1805-1812 [PMID: 12813013 DOI: 10.1172/JCI18921]

P- Reviewer: Gao BL, Gumustas OG **S- Editor:** Gong XM
L- Editor: A **E- Editor:** Wu HL





Published by **Baishideng Publishing Group Inc**
7901 Stoneridge Drive, Suite 501, Pleasanton, CA 94588, USA
Telephone: +1-925-223-8242
Fax: +1-925-223-8243
E-mail: bpgoffice@wjgnet.com
Help Desk: <http://www.f6publishing.com/helpdesk>
<http://www.wjgnet.com>

