

World Journal of *Cardiology*

World J Cardiol 2017 August 26; 9(8): 640-714





REVIEW

- 640 Diagnosis and management challenges of in-stent restenosis in coronary arteries

Alraies MC, Darmoch F, Tummala R, Waksman R

- 652 Cardiovascular involvement in celiac disease

Ciaccio EJ, Lewis SK, Biviano AB, Iyer V, Garan H, Green PH

MINIREVIEWS

- 667 Is there evidence for statins in the treatment of aortic valve stenosis?

Akin I, Nienaber CA

ORIGINAL ARTICLE

Basic Study

- 673 Interleukin-19 is cardioprotective in dominant negative cyclic adenosine monophosphate response-element binding protein-mediated heart failure in a sex-specific manner

Bruns DR, Ghincea AR, Ghincea CV, Azuma YT, Watson PA, Autieri MV, Walker LA

Case Control Study

- 685 Effects of hypertonic saline solution on body weight and serum creatinine in patients with acute decompensated heart failure

Lafrenière G, Béliveau P, Bégin JY, Simonyan D, Côté S, Gaudreault V, Israeli Z, Lavi S, Bagur R

Observational Study

- 693 Estimating pressure gradients by auscultation: How technology (echocardiography) can help improve clinical skills

Kadle RL, Phoon CKL

- 702 Coronary angiography findings in cardiac arrest patients with non-diagnostic post-resuscitation electrocardiogram: A comparison of shockable and non-shockable initial rhythms

Martínez-Losas P, Salinas P, Ferrera C, Nogales-Romo MT, Noriega F, Del Trigo M, Núñez-Gil JJ, Nombela-Franco L, Gonzalo N, Jiménez-Quevedo P, Escaned J, Fernández-Ortiz A, Macaya C, Viana-Tejedor A

CASE REPORT

- 710 Very late bioresorbable scaffold thrombosis and reoccurrence of dissection two years later chronic total occlusion recanalization of the left anterior descending artery

Di Serafino L, Cirillo P, Niglio T, Borgia F, Trimarco B, Esposito G, Stabile E

ABOUT COVER

Editorial Board Member of *World Journal of Cardiology*, Bahri Akdeniz, MD, Professor, Department of Cardiology, Dokuz Eylul University, 35340 Izmir, Turkey

AIM AND SCOPE

World Journal of Cardiology (*World J Cardiol*, *WJC*, online ISSN 1949-8462, DOI: 10.4330) is a peer-reviewed open access journal that aims to guide clinical practice and improve diagnostic and therapeutic skills of clinicians.

WJC covers topics concerning arrhythmia, heart failure, vascular disease, stroke, hypertension, prevention and epidemiology, dyslipidemia and metabolic disorders, cardiac imaging, pediatrics, nursing, and health promotion. Priority publication will be given to articles concerning diagnosis and treatment of cardiology diseases. The following aspects are covered: Clinical diagnosis, laboratory diagnosis, differential diagnosis, imaging tests, pathological diagnosis, molecular biological diagnosis, immunological diagnosis, genetic diagnosis, functional diagnostics, and physical diagnosis; and comprehensive therapy, drug therapy, surgical therapy, interventional treatment, minimally invasive therapy, and robot-assisted therapy.

We encourage authors to submit their manuscripts to *WJC*. We will give priority to manuscripts that are supported by major national and international foundations and those that are of great basic and clinical significance.

INDEXING/ABSTRACTING

World Journal of Cardiology is now indexed in Emerging Sources Citation Index (Web of Science), PubMed, and PubMed Central.

FLYLEAF

I-IV Editorial Board

EDITORS FOR THIS ISSUE

Responsible Assistant Editor: *Xiang Li*
Responsible Electronic Editor: *Ya-Jing Lu*
Proofing Editor-in-Chief: *Lian-Sheng Ma*

Responsible Science Editor: *Fang-Fang Ji*
Proofing Editorial Office Director: *Jin-Lei Wang*

NAME OF JOURNAL
World Journal of Cardiology

ISSN
ISSN 1949-8462 (online)

LAUNCH DATE
December 31, 2009

FREQUENCY
Monthly

EDITORS-IN-CHIEF
Jian-Jun Li, MD, PhD, Professor, Center for Coronary Artery Disease, Fu Wai Cardiovascular Hospital, Chinese Academy of Medical Science, Beijing 100037, China

Giuseppe De Luca, PhD, Assistant Professor, Department of Cardiology, Piedmont University, Novara 28100, Italy

Nathan D Wong, FACC, FAHA, PhD, Director, Professor, Heart Disease Prevention Program, Division of Cardiology, Department of Medicine, University of California, Irvine, CA 92629, United States

sity of California, Irvine, CA 92629, United States

EDITORIAL BOARD MEMBERS
All editorial board members resources online at <http://www.wjgnet.com/1949-8462/editorialboard.htm>

EDITORIAL OFFICE
Xiu-Xia Song, Director
World Journal of Cardiology
Baishideng Publishing Group Inc
7901 Stoneridge Drive, Suite 501, Pleasanton, CA 94588, USA
Telephone: +1-925-2238242
Fax: +1-925-2238243
E-mail: editorialoffice@wjgnet.com
Help Desk: <http://www.f6publishing.com/helpdesk>
<http://www.wjgnet.com>

PUBLISHER
Baishideng Publishing Group Inc
7901 Stoneridge Drive, Suite 501, Pleasanton, CA 94588, USA
Telephone: +1-925-2238242
Fax: +1-925-2238243
E-mail: bpgoffice@wjgnet.com
Help Desk: <http://www.f6publishing.com/helpdesk>
<http://www.wjgnet.com>

PUBLICATION DATE
August 26, 2017

COPYRIGHT
© 2017 Baishideng Publishing Group Inc. Articles published by this Open-Access journal are distributed under the terms of the Creative Commons Attribution Non-commercial License, which permits use, distribution, and reproduction in any medium, provided the original work is properly cited, the use is non commercial and is otherwise in compliance with the license.

SPECIAL STATEMENT
All articles published in journals owned by the Baishideng Publishing Group (BPG) represent the views and opinions of their authors, and not the views, opinions or policies of the BPG, except where otherwise explicitly indicated.

INSTRUCTIONS TO AUTHORS
<http://www.wjgnet.com/bpg/gerinfo/204>

ONLINE SUBMISSION
<http://www.f6publishing.com>

Basic Study

Interleukin-19 is cardioprotective in dominant negative cyclic adenosine monophosphate response-element binding protein-mediated heart failure in a sex-specific manner

Danielle R Bruns, Alexander R Ghincea, Christian V Ghincea, Yasu-Taka Azuma, Peter A Watson, Michael V Autieri, Lori A Walker

Danielle R Bruns, Alexander R Ghincea, Christian V Ghincea, Lori A Walker, Division of Cardiology, Department of Medicine, University of Colorado-Denver, Aurora, CO 80045, United States

Yasu-Taka Azuma, Laboratory of Veterinary Pharmacology, Division of Veterinary Science, Osaka Prefecture University Graduate School of Life and Environmental Science, Osaka 599-8351, Japan

Peter A Watson, Department of Medicine and Endocrinology, University of Colorado-Denver, Aurora, CO 80045, United States

Peter A Watson, Denver Veterans Affairs Medical Center, Denver, CO 80220, United States

Michael V Autieri, Independence Blue Cross Cardiovascular Research Center, Department of Physiology, Temple University School of Medicine, Philadelphia, PA 19122, United States

Author contributions: Bruns DR was involved in conception and design of research, collected, analyzed, and interpreted data, and drafted the manuscript; Ghincea AR and Ghincea CV collected data; Azuma YT approved the final manuscript; Watson PA was involved in conception and design of research; Autieri MV contributed to intellectual design of research, edited and revised final manuscript; Walker LA was involved in conception and design of research, interpretation of data, editing, revising, and approval of final manuscript.

Supported by The University of Colorado-Denver Center for Women's Health Research (to Walker LA); NIH NHLBI HL007822-19 (to Bruns DR); NIH NHLBI HL117724 (to Autieri MV); NIH NHLBI HL115575 (to Autieri MV).

Institutional review board statement: Human subjects research is governed by the Colorado Multiple Institutional Review Board (COMIRB # IORG0000433). However, no human subjects were included in this research.

Institutional animal care and use committee statement: All procedures involving animals were reviewed and approved by the Institutional Animal Care and Use Committee at the University

of Colorado-Denver [Protocol # B-78616(05)1D].

Conflict-of-interest statement: The authors declare that they have no competing interests.

Data sharing statement: Complete dataset and statistical analyses available from the corresponding author at lori.walker@ucdenver.edu.

Open-Access: This article is an open-access article which was selected by an in-house editor and fully peer-reviewed by external reviewers. It is distributed in accordance with the Creative Commons Attribution Non Commercial (CC BY-NC 4.0) license, which permits others to distribute, remix, adapt, build upon this work non-commercially, and license their derivative works on different terms, provided the original work is properly cited and the use is non-commercial. See: <http://creativecommons.org/licenses/by-nc/4.0/>

Manuscript source: Invited manuscript

Correspondence to: Lori A Walker, PhD, Division of Cardiology, Department of Medicine, University of Colorado-Denver, 12700 E. 19th Ave, Aurora, CO 80045, United States. lori.walker@ucdenver.edu
Telephone: +1-303-7245420

Received: January 11, 2017

Peer-review started: January 16, 2017

First decision: April 17, 2017

Revised: July 19, 2017

Accepted: July 21, 2017

Article in press: July 24, 2017

Published online: August 26, 2017

Abstract

AIM

To investigate the role of interleukin-19 (IL-19) in a murine model of female-dominant heart failure (HF).

METHODS

Expression of one copy of a phosphorylation-deficient cyclic adenosine monophosphate response-element binding protein (dnCREB) causes HF, with accelerated morbidity and mortality in female mice compared to males. We assessed expression of IL-19, its receptor isoforms IL-20R α/β , and downstream IL-19 signaling in this model of female-dominant HF. To test the hypothesis that IL-19 is cardioprotective in dnCREB-mediated HF, we generated a novel double transgenic (DTG) mouse of dnCREB and IL-19 knockout and assessed cardiac morbidity by echocardiography and survival of male and female mice.

RESULTS

IL-19 is expressed in the murine heart with decreased expression in dnCREB female compared to male mice. Further, the relative expression of the two IL-19 receptor isoforms manifests differently in the heart by sex and by disease. Male DTG mice had accelerated mortality and cardiac morbidity compared to dnCREB males, while female DTG mice showed no additional detriment, supporting the hypothesis that IL-19 is cardioprotective in this model.

CONCLUSION

Together, these data suggest IL-19 is an important cytokine mediating sex-specific cardiac (dys) function. Ongoing investigations will elucidate the mechanism(s) of sex-specific IL-19 mediated cardiac remodeling.

Key words: Cardiac dysfunction; Sex differences; Heart failure; Interleukin-19

© The Author(s) 2017. Published by Baishideng Publishing Group Inc. All rights reserved.

Core tip: Heart failure (HF) is a sexually dimorphic disease. In a female-dominant model of HF, the dominant negative cyclic AMP response-element binding protein (dnCREB) mouse, female mice show accelerated cardiac morbidity and mortality alongside downregulated interleukin-19 (IL-19) expression, while male mice maintain IL-19 expression and are protected against cardiac dysfunction. We generated a novel double transgenic mouse with dnCREB and IL-19 knockout to test the hypothesis that IL-19 is cardioprotective. We show accelerated cardiac morbidity only in male mice, supporting the hypothesis that IL-19 is a sex-specific cardioprotective cytokine.

Bruns DR, Ghincea AR, Ghincea CV, Azuma YT, Watson PA, Autieri MV, Walker LA. Interleukin-19 is cardioprotective in dominant negative cyclic adenosine monophosphate response-element binding protein-mediated heart failure in a sex-specific manner. *World J Cardiol* 2017; 9(8): 673-684 Available from: URL: <http://www.wjgnet.com/1949-8462/full/v9/i8/673.htm> DOI: <http://dx.doi.org/10.4330/wjc.v9.i8.673>

INTRODUCTION

Heart failure (HF) is the leading cause of mortality within the United States, affecting more than 5 million Americans^[1]. HF is frequently perceived as a disease with poorer prognosis in male patients, perhaps since women are protected against cardiovascular disease premenopausally. However, many large-scale epidemiological studies do not support this conclusion. Sexually divergent manifestation of HF is observed regarding etiological factors, in response to a variety of HF therapies, and in presentation of HF and its comorbidities. Although the prevalence of HF is lower in women compared to men, treatment and survival outcomes for female patients are poorer with females having disproportionately higher morbidity and mortality^[1]. Women are more likely to be symptomatic and functionally limited^[2], experience less improvement following hospitalization^[3], and show higher level of disability at similar levels of left ventricular (LV) dysfunction with worse quality of life^[4] than male counter-parts. Together, the sex differences in HF highlight the necessity to understand female disease to close the gap in treatment and prognosis.

The deleterious effects of inflammatory cytokines in the context of HF are well documented as elevated circulating levels of cytokines predict adverse outcomes in patients with HF^[5]. Inflammatory cytokines directly affect cardiomyocyte contractility^[6], as well as influence LV remodeling and hypertrophy. Few studies, however, have examined sex-specific differences in cytokine expression, though sparse data indicate inflammatory profiles may be sexually dimorphic^[7]. Interleukin-19 (IL-19) is a member of the IL-10 subfamily of interleukins. IL-19 signals through an IL-20 receptor heterodimer IL-20R α and β to activate cytoplasmic tyrosine kinases of the Janus family signal transducer activator of transcription (JAK-STAT)^[8]. Differential relative expression of IL-20R subunits has been reported in different tissue types^[9] and is suggested as a potential mechanism of differential downstream IL-19 signaling, though this hypothesis has not yet been tested in the heart. While initially thought to be restricted to immune cells, IL-19 expression has since been observed in a wide variety of tissue types. IL-19 exerts both proinflammatory and anti-inflammatory properties, depending on tissue and disease specific factors^[10]. Previous work has demonstrated anti-inflammatory properties of IL-19 in endothelial and vascular smooth muscle cells^[8], but its role in the heart remains unknown.

Here, we investigated the expression of IL-19 and its receptor complex in a female dominant model of HF. Cardiac-specific expression of a dominant negative cyclic AMP response element-binding protein (dnCREB) results in dilated cardiomyopathy with accelerated mortality in female mice^[11]. In this model, the transcription factor CREB is rendered phosphorylation inactive *via* mutation of a critical Ser residue located

in the kinase-inducible domain the protein^[12]. In the unphosphorylated state, CREB can bind to DNA but cannot activate transcription, thus rendering the transcription factor inactive. This single nucleotide mutation results in significant cardiac dysfunction and accelerated morbidity and mortality in female mice compared to males. In comparison to male dnCREB mice, female dnCREB have significantly worse LV systolic function, higher heart rate, and diminished cardiac output, resulting in overall greater cardiac morbidity compared to male mice with the same genetic mutation^[11]. This exaggerated pathology in female dnCREB is particularly interesting, as the majority of HF models involving genetically manipulated mice demonstrate more profound morbidity in the male sex^[13]. In addition to this novel sexual divergence, the role of CREB in cardiac dysfunction is important, as CREB is functionally lost in rodent models of HF^[14] and loss of CREB-regulated genes is observed early in the failing human heart^[15]. Here, we show for the first time that IL-19 is expressed in the rodent heart, and is expressed in a sexually dimorphic manner in HF. Further, we demonstrate dysregulated downstream IL-19 signaling in female-dominant HF and suggest that IL-19 is cardioprotective in this model.

MATERIALS AND METHODS

Animals

The mouse model used in this study was a heterozygous, phosphorylation-deficient (Ser¹³³ to Ala¹³³) mutant CREB (dnCREB) transgenic mouse^[16] and non-transgenic (control, Con) littermates. dnCREB mice begin showing signs of contractile dysfunction at eight weeks of age. By 12 wk, female mice display significant mortality compared to males^[11]. Homozygous IL-19 knockout (IL-19 KO) mice were generated as previously described^[17] and show no overt signs of cardiac dysfunction or early morbidity and mortality. To have dnCREB and IL-19 KO mice on the same background, dnCREB mice were back-bred onto the C57 background for a minimum of 6 lineage passages. Male dnCREB mice were then crossed with female IL-19 KO to create heterozygous IL-19 KO. Male dnCREB IL-19 heterozygous mice from this F1 generation were then crossed with IL-19 KO female mice to create homozygous IL-19 KO and heterozygous dnCREB double transgenic male and female mice (DTG). Mice were housed at 4 per cage after weaning. Cages were inspected daily, and date of death noted for those mice found dead. Experiments were conducted in accordance with the National Institutes of Health "Guide for the Care and Use of Laboratory Animals", and were approved by the Institutional Animal Care and Use Committee at the University of Colorado-Denver.

Echocardiography

Cardiac function was assessed by two-dimensional transthoracic echocardiography using a VisualSonics

Vevo 770 high-resolution ultrasound imager equipped with a 35-MHz transducer. Mice were lightly sedated with isoflurane and body temperature was maintained at 37 °C. Parasternal long- and short-axis B-mode videos and M-modes images (at the level of the midpapillary short axis) were routinely acquired. LV wall thicknesses and inner dimensions at diastole and systole were measured from the parasternal short-axis M-mode images.

Isolation of primary ventricular cardiac myocytes and fibroblasts

Cardiomyocytes were isolated from C57BL/6 male and female mice (approximately 14 wk of age) by enzymatic dissociation of the whole heart on a Langendorff apparatus as previously described^[18]. Briefly, hearts were rapidly removed and rinsed in a control buffer (133.5 mmol/L NaCl, 4 mmol/L KCl, 1.2 mmol/L NaH₂PO₄, 10 mmol/L HEPES, 1.2 mmol/L MgSO₄, and 1% bovine serum albumin) to remove blood, weighed and mounted on a Langendorff apparatus. The isolated heart was then perfused at 37 °C for 3 min with control buffer before switching to enzyme solution (control solution containing collagenase type II (2.4 mg/mL) and 25 µmol/L CaCl₂). After perfusion, ventricles were removed, minced in control solution and incubated at 37 °C for an additional 3 min with titration. Dissociated cells were then filtered through a nylon mesh to remove big pieces of undigested tissues. Isolated cells were rinsed in control solution and allowed to settle by gravity to remove debris and non-cardiomyocytes. Calcium was added to the myocytes in step-wise fashion by settling/resuspension in 4 steps. Purified myocytes were resuspended in Medium 199 supplemented with 110 mg/L sodium pyruvate, 0.1 mmol/L β-mercaptoethanol, 100 U/mL penicillin, 100 µg/mL streptomycin, and 10% fetal calf serum and cultured on laminin-coated culture plates at a density of approximately 6000 cells/cm² at 37 °C for 2 h before washing to remove dead and non-adherent cells. Cells were maintained overnight in serum-containing medium before experimentation. Ventricular fibroblasts were isolated following the first low-speed spin to sediment myocytes. Fibroblasts were plated in Dulbecco's modified eagle medium (DMEM) plus 10% fetal calf serum and 1% penicillin/streptomycin and allowed to culture until confluence. Upon reaching confluence, the media was changed to serum-free DMEM for one hour. Cells were then washed one time with PBS and harvested for subsequent experimentation.

Western blot analysis

The LV was carefully dissected away from the right ventricle and atria, and flash-frozen in liquid nitrogen. LV were homogenized in isoelectric focusing buffer (8 mol/L urea, 2.5 mol/L thiourea, 4% Chaps, 2 mmol/L EDTA) containing 2 mmol/L tributylphosphine, 10 mmol/L DTT and protease inhibitors. The homogenate was centrifuged at 14000 g for 5 min, and the super-

natant saved for protein analyses. Protein concentration was determined using a modified protein assay (Bio-Rad) and prepared in Laemmli sample buffer (Bio-Rad). Proteins were resolved on 7.5% SDS-PAGE gels and transferred to PVDF. Following blocking in 5% bovine serum albumin for one hour at room temperature, membranes were incubated with primary antibody overnight at 4 °C. The following primary antibodies were used: Phospho-Stat3 (Tyr705) (Cell Signaling 9131; 1:1000), Stat3 (Cell Signaling 9139; 1:1000). Membranes were washed and incubated with secondary antibody for one hour at room temperature. Protein bands were visualized using a chemiluminescent substrate and autoradiography. Membranes were probed first with phospho signal transducer and activator of transcription 3 (STAT3), stripped, and then re-probed for total STAT3. Equal loading of proteins was verified by Ponceau-S staining.

Real-time RT-PCR

RNA was extracted from LV and isolated cells using standard TRIzol protocol (Thermo Fisher) and reverse transcribed using iScript cDNA synthesis kit (BioRad). For detection of murine IL-19 and IL-20R, real-time RT-PCR was performed with the iCycler My iQ using iQ SYBR Green Supermix (BioRad), normalized to the housekeeping gene 18S ribosomal RNA (18S). Primer sequences were as follows. IL-19 forward: 5'-GGCTAAAAGTATGTTTCAGTTCTCC-3', IL-19 reverse: 5'-AAATCTCTGGAGCGATGTCAG-3', IL-20R α forward: 5'-AACTGGCAGGCTGTGTATCC-3', IL-20R α reverse: 5'-TTGTCAGGTGCCTGGTTCTC-3', IL-20R β forward: 5'-CGAGGAGGGACGGAAGAATG-3', IL-20R β reverse: 5'-TACGGCCTCTCTCGATGTCA-3', 18S forward: 5'-GCCGCTAGAGGTGAAATTCTTG-3', 18S reverse: 5'-CTTTCGCTCTGGTCCGTCTT-3'. Myosin heavy chain β (MYHC β), atrial natriuretic factor (ANF), brain natriuretic peptide (BNP), myosin heavy chain α (MYHC α), and sarcoplasmic reticulum Ca²⁺ ATPase (SERCA) oligonucleotide sequences were used as previously published^[19]. Δ Ct were calculated relative to the housekeeping gene 18S to allow comparisons across all groups (genotype and sex). As such, a lower Δ Ct indicates higher expression.

Statistical analysis

Significance was set a priori at $P < 0.05$. Data were analyzed by Students t-test using GraphPad and 2-way ANOVA (genotype by sex) using IBM SPSS Statistics Version 24. Data with unequal variance were log-transformed to meet assumptions for homoscedasticity. Data are expressed as means \pm SE of the mean. Where statistical analyses trend towards significance ($P < 0.1$), values are also noted above figures. Kaplan-Maier survival curves were generated for survival data, and differences in survival were assessed with log rank test. The statistical methods of this study were reviewed by David Kao, MD from the University of Colorado-Denver.

RESULTS

IL-19 signaling in the female dominant dnCREB model of HF

To begin to delineate the role of IL-19 in dnCREB-mediated HF, we assessed the expression of IL-19 and its receptor subunits in the LV from dnCREB mice compared to controls. Male dnCREB mice showed no change in IL-19 expression (Figure 1A); however, female dnCREB mice demonstrate significantly downregulated IL-19 expression (Figure 1A) with disease, a statistically different outcome in male and female mice (Figure 1B). Neither male nor female mice showed significant changes in expression of IL-20R α or β with disease (Figure 1C and D). However, the ratio of α/β was significantly upregulated only in female dnCREB (Figure 1E). We then assessed activation of STAT3 as a downstream mediator of IL-19 signaling. Both male and female dnCREB mice showed downregulated STAT3 activation compared to control mice (Figure 2); however female dnCREB mice STAT3 activation was suppressed to 40% of control, while male dnCREB mice were suppressed to 70% of control.

Survival of IL-19 KO and dnCREB double transgenic mice

The sexual dimorphic regulation of IL-19 and its receptor subunits in dnCREB-mediated suggests that IL-19 is cardioprotective in the setting of dnCREB, since female mice in this model suffer premature morbidity and mortality compared to males and express significantly attenuated IL-19. To test this hypothesis, we generated a novel double transgenic model (DTG) of IL-19 knockout in dnCREB-mediated HF. Survival analyses show that DTG males died from HF earlier in the development of disease than dnCREB male mice; with nearly identical survival curves to dnCREB females and female DTG (Figure 3). During this time, there was no morbidity in the Con or IL-19 KO mice (data not shown). Thus, knockout of IL-19 in this model accelerates mortality only in male mice, with no additional effect in females.

Assessment of cardiac function in DTG mice

To confirm that accelerated mortality in DTG mice is due to cardiac dysfunction, we examined contractile function in male and female DTG mice at 10 wk of age by echocardiography. Representative M-mode echocardiographs are shown in Figure 4, and quantification (no hyphen) of echocardiography is reported in Table 1. Previous reports of the dnCREB model of female-dominant HF reported diminished fractional shortening (19.4% and 8.79%) and cardiac output (17.4 and 14.6 mL/min) in male and female mice respectively, with a significant difference between sexes^[11]. Consistent with the dnCREB model, our DTG mice showed evidence of significant cardiac contractile dysfunction, with low fractional shortening (14% and 12%), stroke volume (24 and 23 μ L), and cardiac output (13.59 and 14.35 mL/

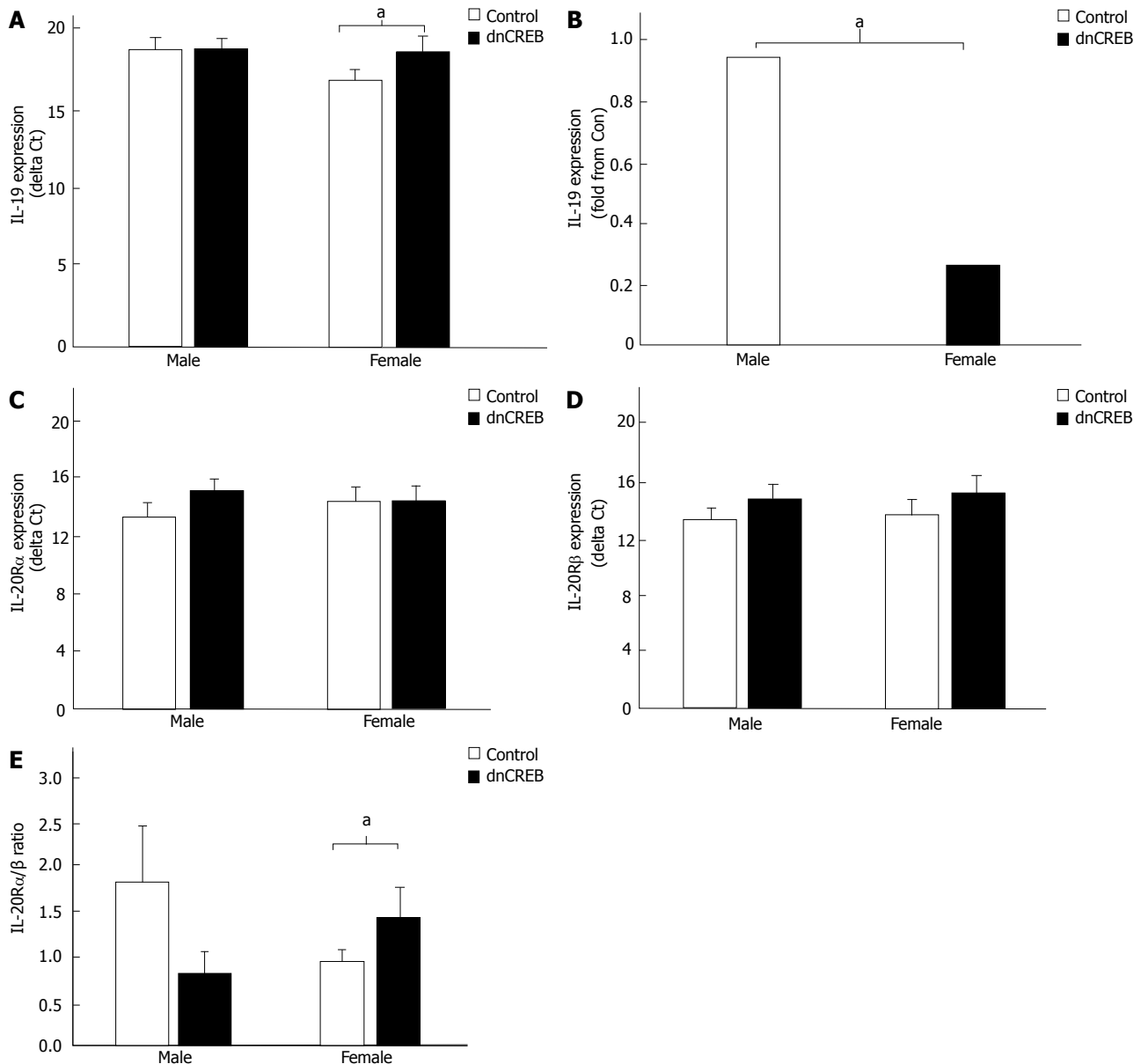


Figure 1 Expression of interleukin-19 and interleukin-20R in the dominant negative cyclic AMP response-element binding protein model of female-dominant heart failure. A: Female male significantly downregulated IL-19 expression in the setting of dnCREB-mediated heart failure compared to male mice which maintained IL-19 expression; B: A significant difference between sexes; C: IL-20Rα and IL-20Rβ (D) expression were unchanged in either sex; D: However, the ratio between IL-20Rα/β was significantly upregulated in female dnCREB mice. Expression of IL-19 and IL-20R was assessed by qRT-PCR, and ΔCt calculated relative to 18S. The ratio of IL-20Rα/β was calculated as a fold change of α-β within each sex. Data are expressed as mean ± SEM. ^a*P* < 0.05, *n* = 5-9 mice per group. dnCREB: Do-minant negative cyclic AMP response-element binding protein.

min) in male and female mice, respectively. However, genetic ablation of IL-19 completely abrogated the previously reported sex difference in the dnCREB model. That is, male DTG mice display similar levels of cardiac morbidity as female DTG, suggesting that IL-19 is cardioprotective in the dnCREB model of HF.

IL-20R expression and STAT3 activation in DTG mice

We assessed the relative expression of IL-20Rα and β subunits in DTG male and female mice. We found male and female DTG mice to express similar levels of both subunits, with no difference in the ratio of the receptor subunits (Figure 5A and B). In addition, we assessed activation of STAT3 in male and female DTG mice and

found STAT3 activation to be similar between sexes (Figure 5C and D). Expression of IL-20R and STAT3 activation in DTG male and female mice contrast with dnCREB mice, where downstream IL-19 signaling was significantly different between sexes.

Biochemical responses to dnCREB-mediated HF

We assessed the expression of five genes in the hypertrophic gene program. These genes, components of the fetal gene program, are differentially expressed in established pathologic cardiac hypertrophy. While myosin heavy chain α (MYHCα) expression was unchanged by either sex or genotype (Figure 6A), myosin heavy chain β (MYHCβ), atrial natriuretic factor (ANF) and

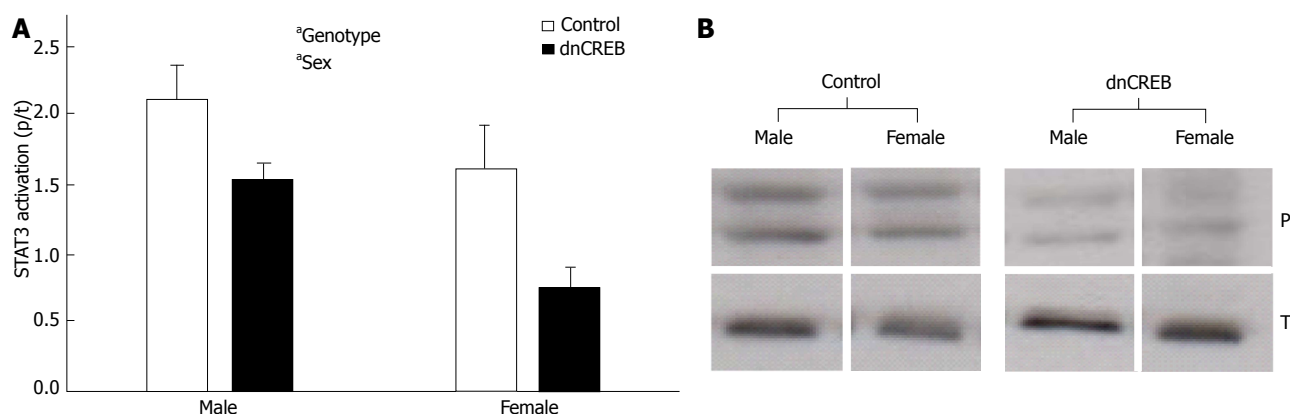


Figure 2 Activation of signal transducer and activator of transcription 3 in the dominant negative cyclic AMP response-element binding protein model of female-dominant heart failure. **A:** Male and female dnCREB mice show attenuated STAT3 activation compared to controls; **B:** Representative immunoblotting images. Activation of STAT3 was assessed by immunoblotting of phospho STAT3/total STAT3. Data are expressed as mean \pm SEM and analyzed by 2-way ANOVA. All four conditions were run on the same gel, and non-essential lanes were removed for generation of the representative images. ^a $P < 0.05$, $n = 2-6$ mice per group. ^a: Significant effect of genotype. dnCREB: Do-minant negative cyclic AMP response-element binding protein; STAT3: Signal transducer and activator of transcription 3.

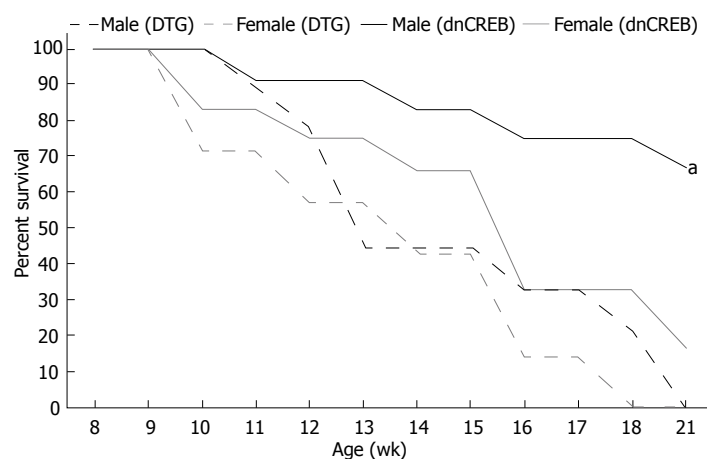


Figure 3 Kaplan-Meier survival curve of dominant negative cyclic AMP response-element binding protein and double transgenic male and female mice. IL-19 knockout in the setting of dnCREB accelerates male mouse mortality, while not affecting female dnCREB survival. No mortality was observed in Control or IL-19 KO mice during this period. Log-rank analyses were performed to compare survival between groups. ^a $P < 0.05$ vs female DTG, female dnCREB, and male DTG; $n = 7-10$ mice per group. dnCREB: Do-minant negative cyclic AMP response-element binding protein; DTG: Double transgenic.

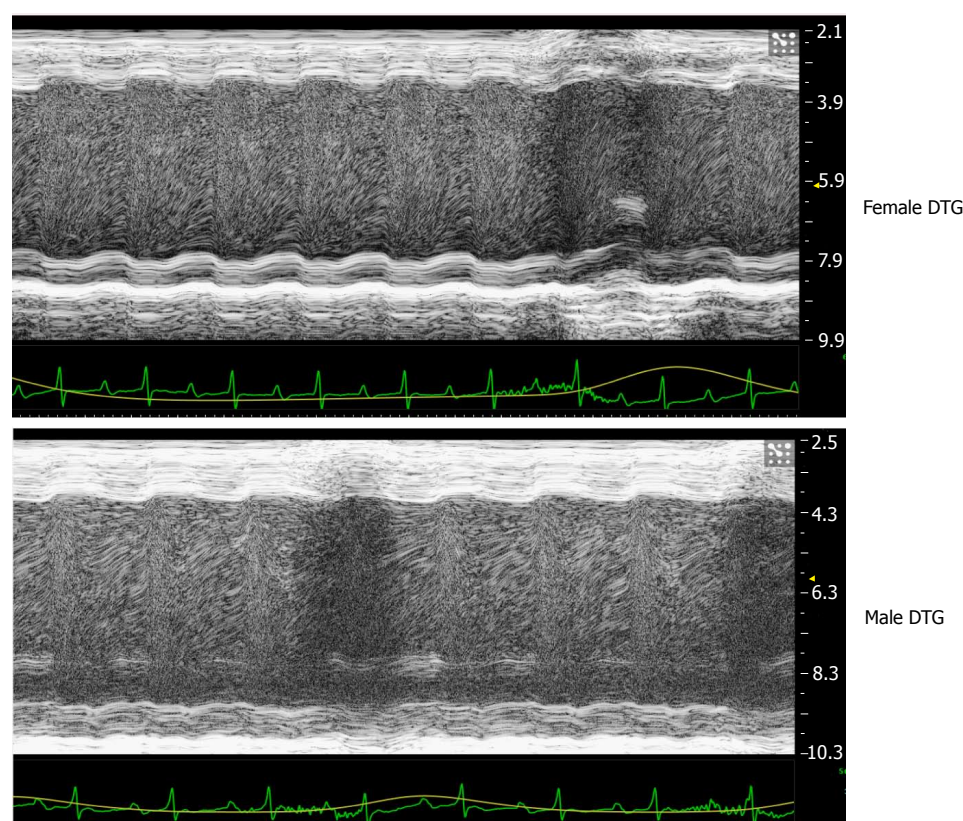


Figure 4 Representative images from M-mode echocardiographic analysis of cardiac function in male and female double transgenic mice. Quantification of echocardiographic analyses are presented in Table 1. DTG: Double transgenic.

Table 1 Cardiac function in dominant negative cyclic AMP response-element binding protein/interleukin-19 KO double transgenic male and female mice¹

		LVID; d (mm)	LVID; s (mm)	FS (%)	SV (μ L)	HR (bpm)	CO (mL/min)
DTG	Male	4.49 \pm 0.47	3.90 \pm 0.60	13.95 \pm 4.2	24.10 \pm 2.60	566 \pm 30	13.59 \pm 1.33
	Female	4.53 \pm 0.18	3.99 \pm 0.29	12.02 \pm 3.05	23.34 \pm 3.11	621 \pm 24	14.35 \pm 1.30

¹Values are presented as mean \pm SEM. Animals are 10 wk of age; $n = 3$ of each sex. All comparisons between sexes are $P > 0.05$ as assessed by Student's *t*-test. LVID; d: Left ventricular internal diameter at diastole; LVID; s: Left ventricular internal diameter at systole; FS: Fractional shortening; SV: Stroke volume; HR: Heart rate; CO: Cardiac output. DTG: Double transgenic.

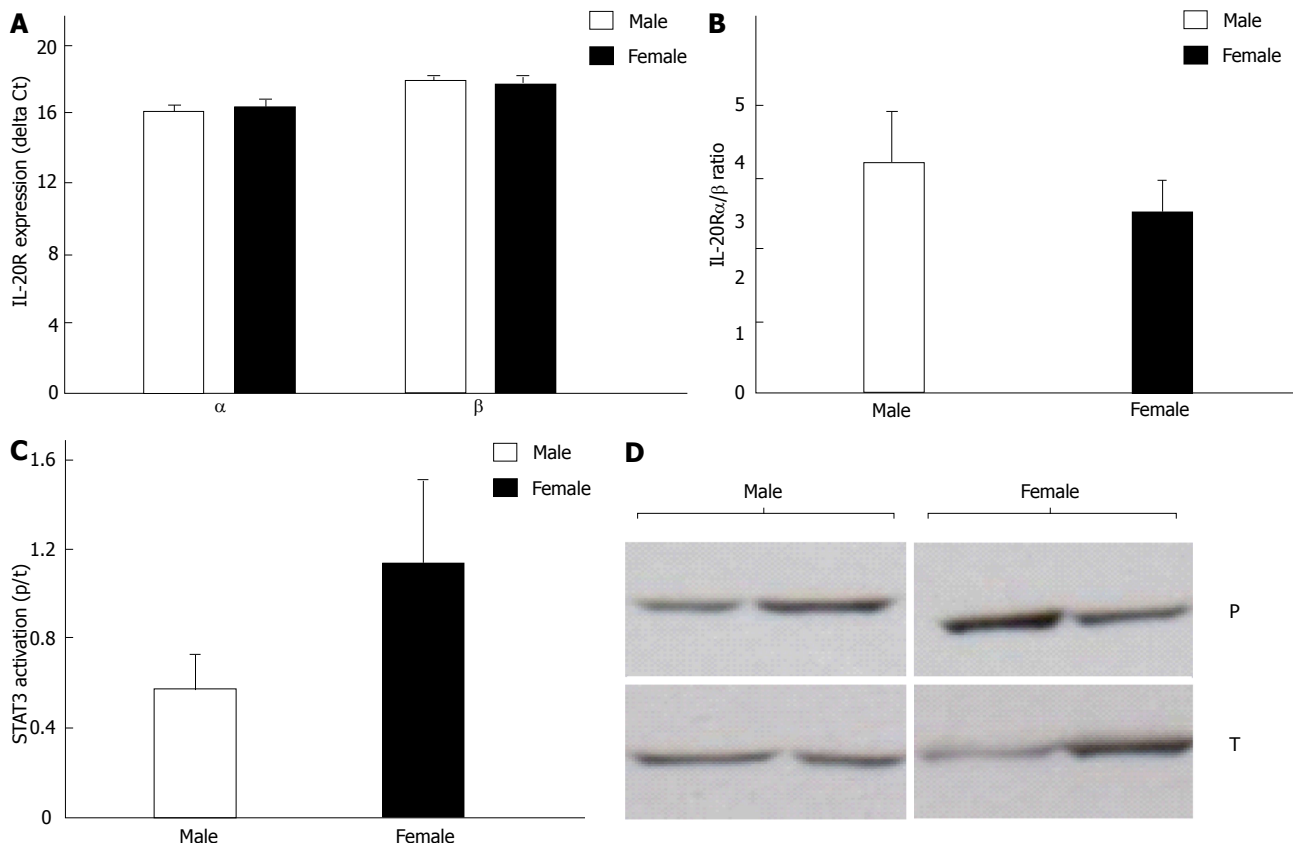


Figure 5 Expression of interleukin-20R α / β and activation of signal transducer and activator of transcription 3 in male and female double transgenic mice. A: IL-20R α and IL-20R β expression were similar in male and female DTG mice; B: Similarly, the ratio of IL-20R α / β did not differ between sexes; C: STAT3 activation did not differ between male and female DTG mice; D: Representative immunoblotting images. Expression of IL-20R was assessed by qRT-PCR and expressed as Δ Ct calculated relative to 18S. The ratio of IL-20R α / β was calculated as a fold change of α - β within each sex. Activation of STAT3 was assessed by immunoblotting of phospho STAT3/total STAT3. Both male and female mice were run on the same gel, and non-essential lanes were cropped for generation of the representative image. Data are expressed as mean \pm SEM; $n = 4-7$ mice per group. STAT3: Signal transducer and activator of transcription 3; DTG: Double transgenic.

brain natriuretic peptide (BNP) were all significantly upregulated in dnCREB and DTG mice (Figure 6B-D), while sarcoplasmic reticulum Ca²⁺ ATPase (SERCA) expression was significantly downregulated (Figure 6E). Surprisingly, we observed no overall effect of sex on fetal gene program expression; however, BNP expression was more robustly induced in female dnCREB mice compared to male dnCREB (4.8 fold vs 2.6 fold, $P < 0.05$, data not shown).

Expression of IL-19 and IL-20R in isolated cardiac myocytes and fibroblasts

IL-19 signaling is uncharacterized in the heart. It is

imperative we understand IL-19 signaling in the male and female heart to understand the dysregulation that occurs with disease. Therefore, we isolated primary cardiac myocytes and fibroblasts from male and female mice to assess IL-19 signaling in these two cell types. Both fibroblasts (Cfib) and myocytes (CM) expressed IL-19, with no differences between sexes in either cell type (Figure 7A). Both cell types also express IL-20R α , with higher expression in CM than Cfib, and a trend towards lower expression in female myocytes than males (Figure 7B). Fibroblasts and myocytes similarly express IL-20R β , with no difference between sexes (Figure 7C), however the ratio of IL-20R α / β

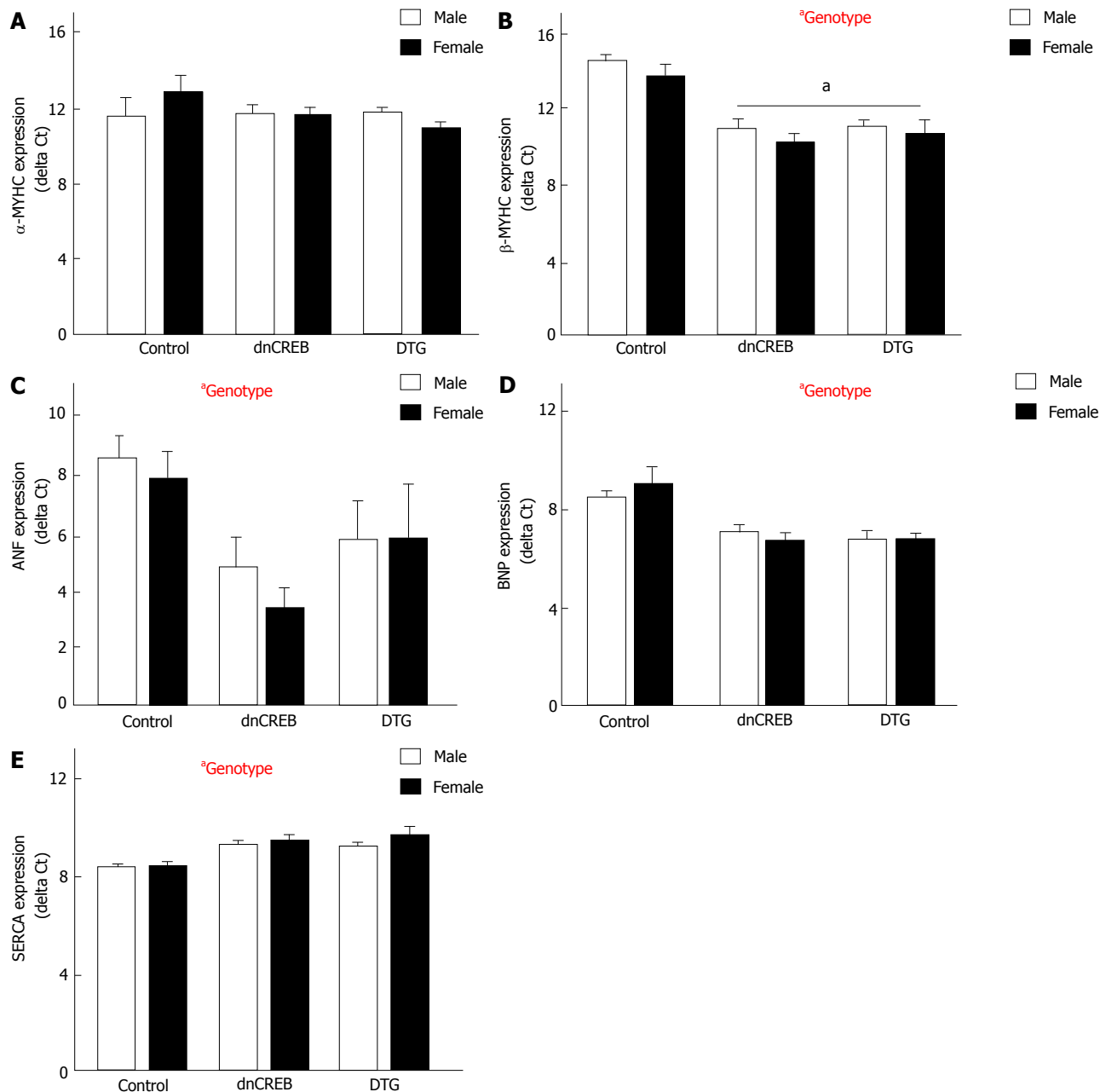


Figure 6 Activation of the fetal hypertrophic gene program in dominant negative cyclic AMP response-element binding protein and double transgenic mice. A: Myosin heavy chain α (MYHC α) expression was unchanged by either sex or genotype; B: Myosin heavy chain β (MYHC β); C: Atrial natriuretic factor (ANF); D: Brain natriuretic peptide (BNP) were all significantly upregulated in both male and female dnCREB and DTG mice; E: Sarcoplasmic reticulum Ca^{2+} ATPase (SERCA) expression was significantly downregulated in both sexes with disease. Expression of fetal hypertrophic genes was assessed by qRT-PCR, relative to the housekeeping gene 18S. Data are expressed as mean \pm SEM and assessed by 2-way ANOVA. $^aP < 0.05$ vs Control; $n = 4-7$ mice per group. a: Significant effect of genotype. dnCREB: Do-minant negative cyclic AMP response-element binding protein; DTG: Double transgenic.

was significantly higher in CM than Cfib (Figure 7D), suggesting the potential for cell-type specific responses to IL-19 signaling in the heart.

DISCUSSION

HF is a sexually dimorphic disease, adversely affecting female patients regarding morbidity and mortality. The maladaptive role of cytokines in HF is well documented; however, only a few studies have considered sex differences in cytokine expression or signaling. We show for the first time that IL-19, a previously

undescribed cytokine in the heart, is expressed in rodent cardiac tissue and two previously unexamined cardiac cell types: Cardiac myocytes and fibroblasts. Further, we report dysregulation of IL-19 signaling in a female-dominant model of HF, suggesting a cardioprotective role of IL-19 in the heart. We propose the following model, as summarized in Figure 8, where IL-19 signaling through IL-20R α/β activates STAT3 and canonical downstream cardioprotective mechanisms. This pathway is significantly downregulated in female dnCREB mice, resulting in attenuated STAT3 activation, LV remodeling, cardiac dysfunction, and premature

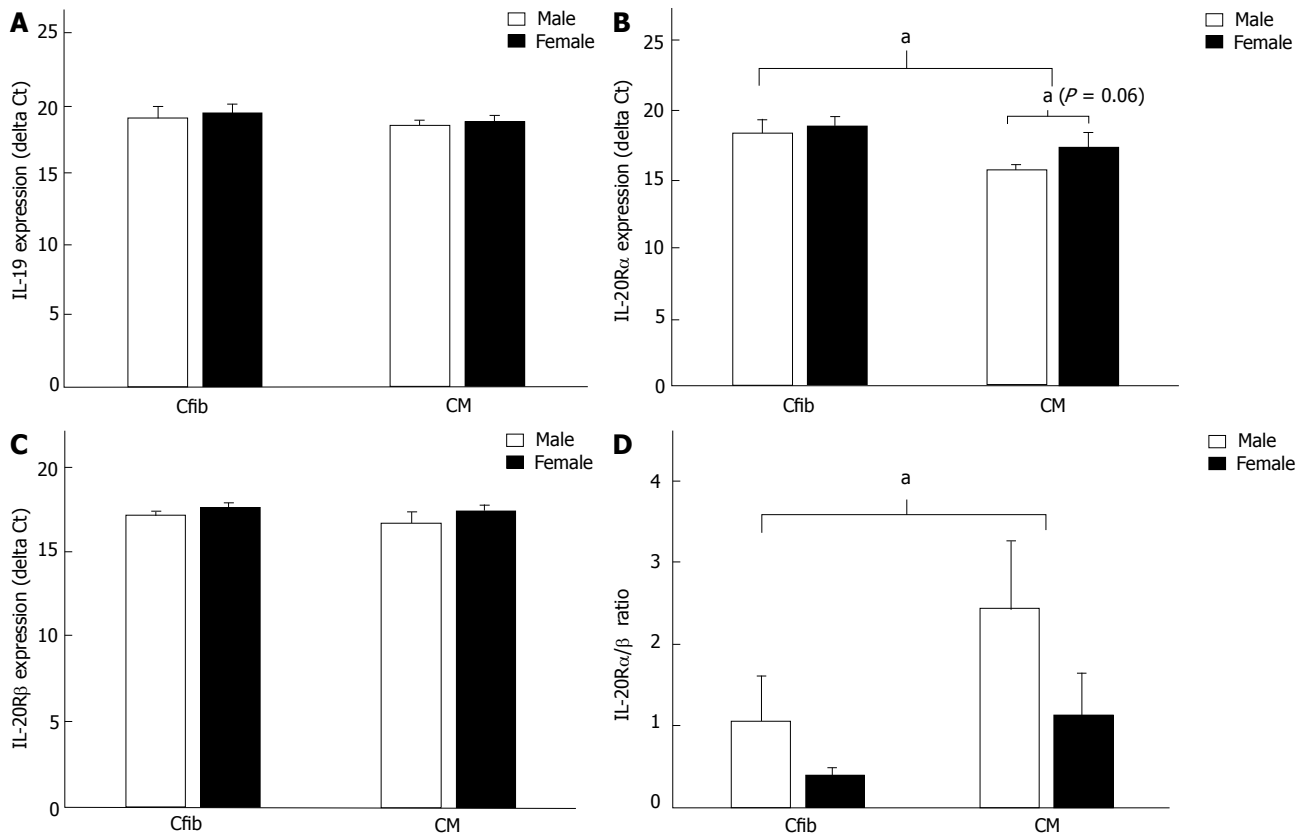


Figure 7 Interleukin-19 and interleukin-20R expression in male and female cardiac fibroblasts and myocytes. A: Both male and female Cfib and CM express IL-19, with no differences between sexes or cell types; B: Both Cfib and CM express IL-20R α , with higher expression in CM than Cfib, as evident by the lower delta Ct. Male CM tended to express higher IL-20R α than female CM ($P = 0.06$); C: Both Cfib and CM express IL-20R β , with no differences between cell types or sex; D: The ratio of IL-20R α / β was significantly higher in CM than Cfib. IL-19 and IL-20R expression were assessed by qRT-PCR and normalized to the housekeeping gene 18S. Data are expressed as mean \pm SEM and assessed by 2-way ANOVA; $n = 7-8$ mice per group. Cfib: Cardiac fibroblasts; CM: Cardiac myocytes.

mortality. However, male dnCREB mice maintain IL-19 expression with disease, resulting in heightened cardioprotection and significantly less morbidity and mortality compared to female mice. Ongoing investigations will elucidate further mechanistic insight into sexually divergent downstream IL-19 mediated cardiac signaling and whether this novel cytokine represents a new therapeutic target for the treatment of women's heart disease.

IL-19 was first discovered over a decade ago and classified as a member of the IL-10 family based on structure and location of the IL-19 gene and the use of similar receptor complexes^[20]. Since its discovery, however, the function of IL-19 has remained unclear. In a number of disease states including asthma^[21], sepsis^[22], and acute kidney injury^[23] IL-19 acts as a pro-inflammatory factor. Conversely, in inflammatory bowel disease^[17] and vascular disease^[24], IL-19 appears to be anti-inflammatory and protect against disease progression. These data imply that IL-19 may function as either pro- or anti-inflammatory depending on the tissue and disease context. Further, it suggests that downstream IL-19 signaling including receptor subunit expression may be implicated in the disparate biological outcomes. A study examining IL-20R expression in 24 different human tissues reports significant differential α /

β subunit expression between tissue types^[9] suggesting differential relative expression of these two subunits may be implicated in the varying biological outcomes of IL-19 signaling. Various groups have attempted to define the binding kinetics and receptor requirements for IL-19 signaling. While most report a requirement for the IL-20R heterodimer and the rapid formation of a stable 1:1:1 complex in the presence of a ligand, other evidence also supports less stable homodimer formation^[25]. In support of homodimer IL-20R signaling, IL-19 has clear effects on lymphocytes derived from IL-20R β knockout mice^[26]. Thus the specific requirement for receptor dimerization remains controversial, as does the effect of subunit expression on IL-19 downstream function. We assessed IL-20R subunit expression in isolated primary cardiac myocytes and fibroblasts and found differential expression of the receptor subunits, suggesting that IL-19 may modulate IL-20R in a cell-type specific manner. These data are consistent with previous reports of IL-19 signaling in the vasculature which demonstrate that IL-19 stimulation of vascular smooth muscle cells induces expression of IL-20R β with no effect on endothelial cells^[27]. Further, receptor subunit expression may be regulated in a sex-specific manner during disease progression as evidenced by differential IL-20R α / β ratios in male and female dnCREB

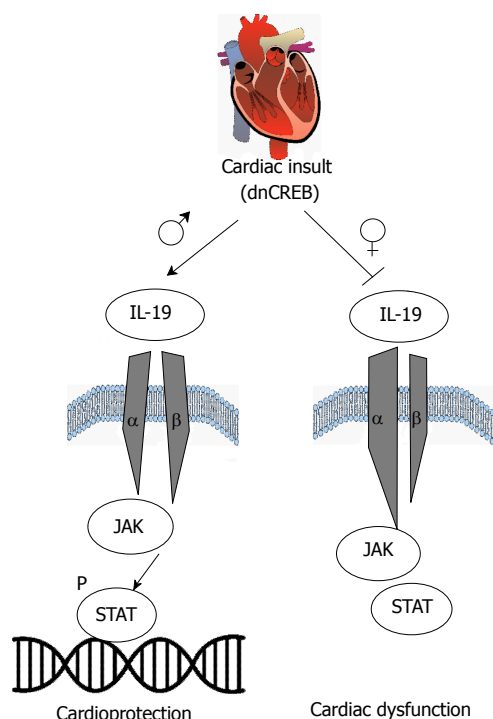


Figure 8 Working model of interleukin-19 in sex-specific heart failure. Cardiac insult (inactivation of cyclic AMP response-element binding protein) results in maintained interleukin-19 (IL-19) expression in male mice, with maintained expression of IL-20 receptor subunits. Activation of downstream JAK-STAT signaling in male hearts is cardioprotective. However, cardiac insult in female mice results in attenuated IL-19 signaling, dysregulated expression of IL-20R subunits, and cardiac dysfunction. Ongoing investigations will delineate the downstream mediators implicated in IL-19 cardioprotection in a sex-specific manner.

mice. Together, these data suggest that cell and context-specific regulation of IL-20 receptor isoforms may be important in disease, and may do so in a sexually dimorphic manner. Elucidation of the effects of IL-19 on specific cardiac cell populations (including inflammatory cells, endothelial, and vascular smooth muscle unexamined here) from male and female models warrants future investigation.

IL-19 treatment of IL-20R α/β expressing cells leads to tyrosine phosphorylation of STAT3^[28]. STAT3 is universally cardioprotective in response to a number of cardiac insults including ischemia-reperfusion injury^[29] and hypertrophy^[30]. Myocyte-specific STAT3 knockout mice develop cardiac fibrosis and myocardial dysfunction even in the absence of stress^[31]. These mice are also more susceptible to inflammation-induced cardiac damage and greater contractile dysfunction^[32], and ultimately lack of myocyte STAT3 leads to age-related HF^[31,32]. Furthermore, human failing hearts exhibit reduced STAT3 levels and activity compared to healthy controls^[33]. Thus, STAT3 is crucial for cardiac resistance to inflammation and other acute injuries. We show attenuated STAT3 activation in the LV from dnCREB male and female mice. Further, this effect is more robust in female dnCREB mice, correlating with the female-dominance of the dnCREB model and the early mortality of female mice. The mechanisms

of STAT3-mediated cardiac protection in our model are not yet characterized; though canonical (Tyr705) STAT3 activation has proposed anti-oxidant, anti-apoptotic, and pro-angiogenic target genes (Reviewed in^[34]). In addition, STAT3 also enhances mitochondrial respiration and acts on complex I to inhibit reactive oxygen species formation; mechanisms which are augmented by non-canonical phosphorylation of STAT3 at Ser727^[35]. The action of STAT3 on mitochondrial function is particularly interesting and warrants future investigation, as dnCREB female mice have increased oxidant production, attenuated antioxidant defenses, and disrupted mitochondrial structure and function compared to male dnCREB^[11].

In summary, we show for the first time that IL-19 demonstrates clear sexually dimorphic expression in the female-dominant dnCREB model of HF. Ablation of IL-19 in this model accelerates male mortality and causes severe cardiac morbidity, suggesting a cardioprotective role for IL-19 in the heart. Elucidation of IL-19 signaling in this model and in other models of female-dominant HF will facilitate the identification of novel therapeutics for women's heart disease.

ACKNOWLEDGMENTS

The authors thank Yanmei Du for technical assistance.

COMMENTS

Background

Heart failure (HF) is a sexually dimorphic disease, with worse morbidity and mortality in female patients compared to males. Inflammation is hypothesized to play a detrimental role in HF development, though whether it is regulated in a sexually dimorphic manner remains unknown. Interleukin-19 (IL-19) is an inflammatory cytokine with an unknown function in the healthy heart or in HF. Therefore, the authors set out to assess the role of IL-19 in female dominant HF.

Research frontiers

HF is characterized by inflammatory signaling, though how this may be regulated in a sex-specific manner is unknown. Since HF is a sexually dimorphic disease, it is imperative that understand molecular mechanisms which contribute to disease in a sex-specific approach.

Innovations and breakthroughs

Although IL-19 has been studied in the vasculature, few reports exist regarding cardiac signaling. The authors show for the first time that IL-19 demonstrates clear sexually dimorphic expression in a model of female-dominant HF. Genetic ablation of IL-19 in this model accelerates male mortality, suggesting IL-19 is cardioprotective.

Applications

Development of sex-specific therapies will improve HF outcomes, and is a primary goal of personalized medicine. To develop sex-specific therapies, the authors must understand mechanisms which underlie HF in both males and females. Although the impact of IL-19 in the human heart remains unknown, the data identify sex-specific mediators of cardiac function, and suggest that therapies for the failing human heart be explored in both sexes.

Peer-review

This is a very interesting topic. The paper is well written, clear and interesting. The results provide adequate grounds for the conclusion.

REFERENCES

- 1 **Go AS**, Mozaffarian D, Roger VL, Benjamin EJ, Berry JD, Borden WB, Bravata DM, Dai S, Ford ES, Fox CS, Franco S, Fullerton HJ, Gillespie C, Hailpern SM, Heit JA, Howard VJ, Huffman MD, Kissela BM, Kittner SJ, Lackland DT, Lichtman JH, Lisabeth LD, Magid D, Marcus GM, Marelli A, Matchar DB, McGuire DK, Mohler ER, Moy CS, Mussolino ME, Nichol G, Paynter NP, Schreiner PJ, Sorlie PD, Stein J, Turan TN, Virani SS, Wong ND, Woo D, Turner MB; American Heart Association Statistics Committee and Stroke Statistics Subcommittee. Heart disease and stroke statistics--2013 update: a report from the American Heart Association. *Circulation* 2013; **127**: e6-e245 [PMID: 23239837 DOI: 10.1161/CIR.0b013e31828124ad]
- 2 **Friedman MM**. Gender differences in the health related quality of life of older adults with heart failure. *Heart Lung* 2003; **32**: 320-327 [PMID: 14528189 DOI: 10.1016/S0147-9563(03)00098-0]
- 3 **Chin MH**, Goldman L. Gender differences in 1-year survival and quality of life among patients admitted with congestive heart failure. *Med Care* 1998; **36**: 1033-1046 [PMID: 9674621]
- 4 **Hoekstra T**, Jaarsma T, van Veldhuisen DJ, Hillege HL, Sanderman R, Lesman-Leegte I. Quality of life and survival in patients with heart failure. *Eur J Heart Fail* 2013; **15**: 94-102 [PMID: 22989869 DOI: 10.1093/eurjhf/hfs148]
- 5 **Kalogeropoulos A**, Georgiopoulou V, Psaty BM, Rodondi N, Smith AL, Harrison DG, Liu Y, Hoffmann U, Bauer DC, Newman AB, Kritchevsky SB, Harris TB, Butler J; Health ABC Study Investigators. Inflammatory markers and incident heart failure risk in older adults: the Health ABC (Health, Aging, and Body Composition) study. *J Am Coll Cardiol* 2010; **55**: 2129-2137 [PMID: 20447537 DOI: 10.1016/j.jacc.2009.12.045]
- 6 **Radin MJ**, Holycross BJ, Dumitrescu C, Kelley R, Altschuld RA. Leptin modulates the negative inotropic effect of interleukin-1beta in cardiac myocytes. *Mol Cell Biochem* 2008; **315**: 179-184 [PMID: 18535786 DOI: 10.1007/s11010-008-9805-6]
- 7 **Deswal A**, Petersen NJ, Feldman AM, Young JB, White BG, Mann DL. Cytokines and cytokine receptors in advanced heart failure: an analysis of the cytokine database from the Vesnarinone trial (VEST). *Circulation* 2001; **103**: 2055-2059 [PMID: 11319194 DOI: 10.1161/01.CIR.103.16.2055]
- 8 **Tian Y**, Somerville LJ, Cuneo A, Kelemen SE, Autieri MV. Expression and suppressive effects of interleukin-19 on vascular smooth muscle cell pathophysiology and development of intimal hyperplasia. *Am J Pathol* 2008; **173**: 901-909 [PMID: 18669613 DOI: 10.2353/ajpath.2008.080163]
- 9 **Blumberg H**, Conklin D, Xu WF, Grossmann A, Brender T, Carollo S, Eagan M, Foster D, Haldeman BA, Hammond A, Haugen H, Jelinek L, Kelly JD, Madden K, Maurer MF, Parrish-Novak J, Prunkard D, Sexson S, Sprecher C, Waggle K, West J, Whitmore TE, Yao L, Kuechle MK, Dale BA, Chandrasekhar YA. Interleukin 20: discovery, receptor identification, and role in epidermal function. *Cell* 2001; **104**: 9-19 [PMID: 11163236 DOI: 10.1016/S0092-8674(01)00187-8]
- 10 **England RN**, Autieri MV. Anti-inflammatory effects of interleukin-19 in vascular disease. *Int J Inflam* 2012; **2012**: 253583 [PMID: 22844641 DOI: 10.1155/2012/253583]
- 11 **Watson PA**, Birdsey N, Huggins GS, Svensson E, Heppes D, Knaub L. Cardiac-specific overexpression of dominant-negative CREB leads to increased mortality and mitochondrial dysfunction in female mice. *Am J Physiol Heart Circ Physiol* 2010; **299**: H2056-H2068 [PMID: 20935148 DOI: 10.1152/ajpheart.00394.2010]
- 12 **Gonzalez GA**, Montminy MR. Cyclic AMP stimulates somatostatin gene transcription by phosphorylation of CREB at serine 133. *Cell* 1989; **59**: 675-680 [PMID: 2573431]
- 13 **Du XJ**. Gender modulates cardiac phenotype development in genetically modified mice. *Cardiovasc Res* 2004; **63**: 510-519 [PMID: 15276476 DOI: 10.1016/j.cardiores.2004.03.027]
- 14 **Watson PA**, Reusch JE, McCune SA, Leinwand LA, Luckey SW, Konhilas JP, Brown DA, Chicco AJ, Sparagna GC, Long CS, Moore RL. Restoration of CREB function is linked to completion and stabilization of adaptive cardiac hypertrophy in response to exercise. *Am J Physiol Heart Circ Physiol* 2007; **293**: H246-H259 [PMID: 17337597 DOI: 10.1152/ajpheart.00734.2006]
- 15 **Sihag S**, Cresci S, Li AY, Sucharov CC, Lehman JJ. PGC-1alpha and ERRalpha target gene downregulation is a signature of the failing human heart. *J Mol Cell Cardiol* 2009; **46**: 201-212 [PMID: 19061896 DOI: 10.1016/j.yjmcc.2008.10.025]
- 16 **Fentzke RC**, Korcarz CE, Lang RM, Lin H, Leiden JM. Dilated cardiomyopathy in transgenic mice expressing a dominant-negative CREB transcription factor in the heart. *J Clin Invest* 1998; **101**: 2415-2426 [PMID: 9616213 DOI: 10.1172/JCI2950]
- 17 **Azuma YT**, Matsuo Y, Kuwamura M, Yancopoulos GD, Valenzuela DM, Murphy AJ, Nakajima H, Karow M, Takeuchi T. Interleukin-19 protects mice from innate-mediated colonic inflammation. *Inflamm Bowel Dis* 2010; **16**: 1017-1028 [PMID: 19834971 DOI: 10.1002/ibd.21151]
- 18 **Li D**, Wu J, Bai Y, Zhao X, Liu L. Isolation and culture of adult mouse cardiomyocytes for cell signaling and in vitro cardiac hypertrophy. *J Vis Exp* 2014; **(87)** [PMID: 24894542 DOI: 10.3791/51357]
- 19 **Dockstader K**, Nunley K, Karimpour-Fard A, Medway A, Nelson P, Port JD, Liggett SB, Bristow MR, Sucharov CC. Temporal analysis of mRNA and miRNA expression in transgenic mice overexpressing Arg- and Gly389 polymorphic variants of the beta1-adrenergic receptor. *Physiol Genomics* 2011; **43**: 1294-1306 [PMID: 21954455 DOI: 10.1152/physiolgenomics.00067.2011]
- 20 **Sabat R**, Wallace E, Endesfelder S, Wolk K. IL-19 and IL-20: two novel cytokines with importance in inflammatory diseases. *Expert Opin Ther Targets* 2007; **11**: 601-612 [PMID: 17465720 DOI: 10.1517/14728222.11.5.601]
- 21 **Liao SC**, Cheng YC, Wang YC, Wang CW, Yang SM, Yu CK, Shieh CC, Cheng KC, Lee MF, Chiang SR, Shieh JM, Chang MS. IL-19 induced Th2 cytokines and was up-regulated in asthma patients. *J Immunol* 2004; **173**: 6712-6718 [PMID: 15557163 DOI: 10.4049/jimmunol.173.11.6712]
- 22 **Hsing CH**, Chiu CJ, Chang LY, Hsu CC, Chang MS. IL-19 is involved in the pathogenesis of endotoxic shock. *Shock* 2008; **29**: 7-15 [PMID: 18246602 DOI: 10.1097/SHK.0b013e318067de40]
- 23 **Hsu YH**, Li HH, Sung JM, Chen WT, Hou YC, Chang MS. Interleukin-19 mediates tissue damage in murine ischemic acute kidney injury. *PLoS One* 2013; **8**: e56028 [PMID: 23468852 DOI: 10.1371/journal.pone.0056028]
- 24 **Gabunia K**, Jain S, England RN, Autieri MV. Anti-inflammatory cytokine interleukin-19 inhibits smooth muscle cell migration and activation of cytoskeletal regulators of VSMC motility. *Am J Physiol Cell Physiol* 2011; **300**: C896-C906 [PMID: 21209363 DOI: 10.1152/ajpcell.00439.2010]
- 25 **Pletnev S**, Magracheva E, Kozlov S, Tobin G, Kotenko SV, Wlodawer A, Zdanov A. Characterization of the recombinant extracellular domains of human interleukin-20 receptors and their complexes with interleukin-19 and interleukin-20. *Biochemistry* 2003; **42**: 12617-12624 [PMID: 14580208 DOI: 10.1021/bi0354583]
- 26 **Wahl C**, Müller W, Leithäuser F, Adler G, Oswald F, Reimann J, Schirmbeck R, Seier A, Weiss JM, Prochnow B, Wegenka UM. IL-20 receptor 2 signaling down-regulates antigen-specific T cell responses. *J Immunol* 2009; **182**: 802-810 [PMID: 19124723 DOI: 10.4049/jimmunol.182.2.802]
- 27 **Kako F**, Gabunia K, Ray M, Kelemen SE, England RN, Kako B, Scalia RG, Autieri MV. Interleukin-19 induces angiogenesis in the absence of hypoxia by direct and indirect immune mechanisms. *Am J Physiol Cell Physiol* 2016; **310**: C931-C941 [PMID: 27053520 DOI: 10.1152/ajpcell.00006.2016]
- 28 **Dumoutier L**, Leemans C, Lejeune D, Kotenko SV, Renauld JC. Cutting edge: STAT activation by IL-19, IL-20 and mda-7 through IL-20 receptor complexes of two types. *J Immunol* 2001; **167**: 3545-3549 [PMID: 11564763 DOI: 10.4049/jimmunol.167.7.3545]
- 29 **Bolli R**, Dawn B, Xuan YT. Role of the JAK-STAT pathway in protection against myocardial ischemia/reperfusion injury. *Trends Cardiovasc Med* 2003; **13**: 72-79 [PMID: 12586443 DOI: 10.1016/S1050-1738(02)00230-X]
- 30 **Booz GW**, Day JN, Baker KM. Interplay between the cardiac renin angiotensin system and JAK-STAT signaling: role in cardiac

- hypertrophy, ischemia/reperfusion dysfunction, and heart failure. *J Mol Cell Cardiol* 2002; **34**: 1443-1453 [PMID: 12431443 DOI: 10.1006/jmcc.2002.2076]
- 31 **Hilfiker-Kleiner D**, Hilfiker A, Fuchs M, Kaminski K, Schaefer A, Schieffer B, Hillmer A, Schmiedl A, Ding Z, Podewski E, Podewski E, Poli V, Schneider MD, Schulz R, Park JK, Wollert KC, Drexler H. Signal transducer and activator of transcription 3 is required for myocardial capillary growth, control of interstitial matrix deposition, and heart protection from ischemic injury. *Circ Res* 2004; **95**: 187-195 [PMID: 15192020 DOI: 10.1161/01.RES.0000134921.50377.61]
 - 32 **Jacoby JJ**, Kalinowski A, Liu MG, Zhang SS, Gao Q, Chai GX, Ji L, Iwamoto Y, Li E, Schneider M, Russell KS, Fu XY. Cardiomyocyte-restricted knockout of STAT3 results in higher sensitivity to inflammation, cardiac fibrosis, and heart failure with advanced age. *Proc Natl Acad Sci USA* 2003; **100**: 12929-12934 [PMID: 14566054 DOI: 10.1073/pnas.2134694100]
 - 33 **Podewski EK**, Hilfiker-Kleiner D, Hilfiker A, Morawietz H, Lichtenberg A, Wollert KC, Drexler H. Alterations in Janus kinase (JAK)-signal transducers and activators of transcription (STAT) signaling in patients with end-stage dilated cardiomyopathy. *Circulation* 2003; **107**: 798-802 [PMID: 12591746 DOI: 10.1161/01.CIR.0000057545.82749.FF]
 - 34 **Zouein FA**, Altara R, Chen Q, Lesnefsky EJ, Kurdi M, Booz GW. Pivotal Importance of STAT3 in Protecting the Heart from Acute and Chronic Stress: New Advancement and Unresolved Issues. *Front Cardiovasc Med* 2015; **2**: 36 [PMID: 26664907 DOI: 10.3389/fcvm.2015.00036]
 - 35 **Szczepanek K**, Chen Q, Larner AC, Lesnefsky EJ. Cytoprotection by the modulation of mitochondrial electron transport chain: the emerging role of mitochondrial STAT3. *Mitochondrion* 2012; **12**: 180-189 [PMID: 21930250 DOI: 10.1016/j.mito.2011.08.011]

P-Reviewer: Lin GM, Petretta M **S-Editor:** Kong JX **L-Editor:** A
E-Editor: Lu YJ





Published by **Baishideng Publishing Group Inc**
7901 Stoneridge Drive, Suite 501, Pleasanton, CA 94588, USA
Telephone: +1-925-223-8242
Fax: +1-925-223-8243
E-mail: bpgoffice@wjgnet.com
Help Desk: <http://www.f6publishing.com/helpdesk>
<http://www.wjgnet.com>

