

World Journal of *Hepatology*

World J Hepatol 2017 June 28; 9(18): 797-832





Contents

Three issues per month Volume 9 Number 18 June 28, 2017

REVIEW

- 797 Systemic treatment of hepatocellular carcinoma: Past, present and future
Cidon EU

MINIREVIEWS

- 808 Conventional *vs* drug-eluting beads transarterial chemoembolization for hepatocellular carcinoma
Song JE, Kim DY

ORIGINAL ARTICLE

Retrospective Cohort Study

- 815 Risk factors for acute kidney injury after partial hepatectomy
Bredt LC, Peres LAB

Retrospective Study

- 823 Early acute kidney injury after liver transplantation: Predisposing factors and clinical implications
Rahman S, Davidson BR, Mallett SV

Contents

World Journal of Hepatology
Volume 9 Number 18 June 28, 2017

ABOUT COVER

Editorial Board Member of *World Journal of Hepatology*, Dr. Nutan D Desai, MD, Department of Gastroenterology, Fortis Hospital Mulund Mumbai, Mumbai, Maharashtra 400080, India

AIM AND SCOPE

World Journal of Hepatology (*World J Hepatol*, *WJH*, online ISSN 1948-5182, DOI: 10.4254), is a peer-reviewed open access academic journal that aims to guide clinical practice and improve diagnostic and therapeutic skills of clinicians.

WJH covers topics concerning liver biology/pathology, cirrhosis and its complications, liver fibrosis, liver failure, portal hypertension, hepatitis B and C and inflammatory disorders, steatohepatitis and metabolic liver disease, hepatocellular carcinoma, biliary tract disease, autoimmune disease, cholestatic and biliary disease, transplantation, genetics, epidemiology, microbiology, molecular and cell biology, nutrition, geriatric and pediatric hepatology, diagnosis and screening, endoscopy, imaging, and advanced technology. Priority publication will be given to articles concerning diagnosis and treatment of hepatology diseases. The following aspects are covered: Clinical diagnosis, laboratory diagnosis, differential diagnosis, imaging tests, pathological diagnosis, molecular biological diagnosis, immunological diagnosis, genetic diagnosis, functional diagnostics, and physical diagnosis; and comprehensive therapy, drug therapy, surgical therapy, interventional treatment, minimally invasive therapy, and robot-assisted therapy.

We encourage authors to submit their manuscripts to *WJH*. We will give priority to manuscripts that are supported by major national and international foundations and those that are of great basic and clinical significance.

INDEXING/ABSTRACTING

World Journal of Hepatology is now indexed in Emerging Sources Citation Index (Web of Science), PubMed, PubMed Central, and Scopus.

FLYLEAF

I-IV Editorial Board

EDITORS FOR THIS ISSUE

Responsible Assistant Editor: *Xiang Li*
Responsible Electronic Editor: *Dan Li*
Proofing Editor-in-Chief: *Lian-Sheng Ma*

Responsible Science Editor: *Fung-Fung Ji*
Proofing Editorial Office Director: *Jin-Lei Wang*

NAME OF JOURNAL
World Journal of Hepatology

ISSN
ISSN 1948-5182 (online)

LAUNCH DATE
October 31, 2009

FREQUENCY
36 Issues/Year (8th, 18th, and 28th of each month)

EDITORS-IN-CHIEF
Clara Balsano, PhD, Professor, Department of Biomedicine, Institute of Molecular Biology and Pathology, Rome 00161, Italy

Wan-Long Chuang, MD, PhD, Doctor, Professor, Hepatobiliary Division, Department of Internal Medicine, Kaohsiung Medical University Hospital, Kaohsiung Medical University, Kaohsiung 807, Taiwan

EDITORIAL BOARD MEMBERS
All editorial board members resources online at <http://www.wjgnet.com>

www.wjgnet.com/1948-5182/editorialboard.htm

EDITORIAL OFFICE
Xiu-Xia Song, Director
World Journal of Hepatology
Baishideng Publishing Group Inc
7901 Stoneridge Drive, Suite 501,
Pleasanton, CA 94588, USA
Telephone: +1-925-2238243
Fax: +1-925-2238243
E-mail: editorialoffice@wjgnet.com
Help Desk: <http://www.f6publishing.com/helpdesk>
<http://www.wjgnet.com>

PUBLISHER
Baishideng Publishing Group Inc
7901 Stoneridge Drive, Suite 501,
Pleasanton, CA 94588, USA
Telephone: +1-925-2238242
Fax: +1-925-2238243
E-mail: bpgoffice@wjgnet.com
Help Desk: <http://www.f6publishing.com/helpdesk>
<http://www.wjgnet.com>

PUBLICATION DATE
June 28, 2017

COPYRIGHT
© 2017 Baishideng Publishing Group Inc. Articles published by this Open Access journal are distributed under the terms of the Creative Commons Attribution Non-commercial License, which permits use, distribution, and reproduction in any medium, provided the original work is properly cited, the use is non commercial and is otherwise in compliance with the license.

SPECIAL STATEMENT
All articles published in journals owned by the Baishideng Publishing Group (BPG) represent the views and opinions of their authors, and not the views, opinions or policies of the BPG, except where otherwise explicitly indicated.

INSTRUCTIONS TO AUTHORS
<http://www.wjgnet.com/bpg/gerinfo/204>

ONLINE SUBMISSION
<http://www.f6publishing.com>

Retrospective Cohort Study

Risk factors for acute kidney injury after partial hepatectomy

Luis Cesar Bredt, Luis Alberto Batista Peres

Luis Cesar Bredt, Department of Surgical Oncology and Hepatobiliary Surgery, University Hospital of Western Paraná, State University of Western Paraná, Cascavel, Paraná 85819-110, Brazil

Luis Alberto Batista Peres, Department of Nephrology, University Hospital of Western Paraná, State University of Western Paraná, Cascavel, Paraná 85819-110, Brazil

Author contributions: Bredt LC and Peres LAB contributed equally to this review article; all authors equally contributed to this paper with conception and design of the study, literature review and analysis, drafting and critical revision and editing, and final approval of the final version.

Institutional review board statement: The study was approved by the Research Ethics Board at West Parana University (number. 1.665.135; July 2016). The study was conformed to the ethical guidelines of the 1975 Declaration of Helsinki.

Informed consent statement: All authors (Bredt LC, Peres LAB) declare that all involved persons (subjects or legally authorized representative) gave their informed verbal consent (in person or by phone, as appropriate) prior to study inclusion.

Conflict-of-interest statement: No potential conflicts of interest. No financial support.

Data sharing statement: All authors (Bredt LC, Peres LAB) declare that the original anonymous dataset is available on request from the corresponding author (lcbredt@gmail.com).

Open-Access: This article is an open-access article which was selected by an in-house editor and fully peer-reviewed by external reviewers. It is distributed in accordance with the Creative Commons Attribution Non Commercial (CC BY-NC 4.0) license, which permits others to distribute, remix, adapt, build upon this work non-commercially, and license their derivative works on different terms, provided the original work is properly cited and the use is non-commercial. See: <http://creativecommons.org/licenses/by-nc/4.0/>

Manuscript source: Invited manuscript

Correspondence to: Luis Cesar Bredt, Full Professor, Department of Surgical Oncology and Hepatobiliary Surgery, University

Hospital of Western Paraná, State University of Western Paraná, Dom Pedro II Street, 2099, apto 701, Cascavel, Paraná 85819-110, Brazil. lcbredt@gmail.com
Telephone: +55-45-999369943
Fax: +55-45-33215151

Received: February 16, 2017
Peer-review started: February 17, 2017
First decision: April 14, 2017
Revised: May 14, 2017
Accepted: May 22, 2017
Article in press: May 24, 2017
Published online: June 28, 2017

Abstract

AIM

To identify risk factors for the occurrence of acute kidney injury (AKI) in the postoperative period of partial hepatectomies.

METHODS

Retrospective analysis of 446 consecutive resections in 405 patients, analyzing clinical characteristics, pre-operative laboratory data, intraoperative data, and postoperative laboratory data and clinical evolution. Adopting the International Club of Ascites criteria for the definition of AKI, potential predictors of AKI by logistic regression were identified.

RESULTS

Of the total 446 partial liver resections, postoperative AKI occurred in 80 cases (17.9%). Identified predictors of AKI were: Non-dialytic chronic kidney injury (CKI), biliary obstruction, the Model for End-Stage Liver Disease (MELD) score, the extent of hepatic resection, the occurrence of intraoperative hemodynamic instability, post-hepatectomy haemorrhage, and postoperative sepsis.

CONCLUSION

The MELD score, the presence of non-dialytic CKI

and biliary obstruction in the preoperative period, and perioperative hemodynamics instability, bleeding, and sepsis are risk factors for the occurrence of AKI in patients that underwent partial hepatectomy.

Key words: Kidney injury; Hepatectomy; Postoperative; Liver; Resection

© **The Author(s) 2017.** Published by Baishideng Publishing Group Inc. All rights reserved.

Core tip: Acute kidney injury (AKI) is a serious complication after partial hepatectomy. This research aims to identify risk factors for the occurrence of AKI in the postoperative period of partial hepatectomies. The Model for End-Stage Liver Disease score, the presence of non-dialytic chronic kidney injury and biliary obstruction in the preoperative period, and perioperative hemodynamics instability, bleeding, and sepsis are risk factors for the occurrence of AKI in patients that underwent partial hepatectomy.

Bredt LC, Peres LAB. Risk factors for acute kidney injury after partial hepatectomy. *World J Hepatol* 2017; 9(18): 815-822 Available from: URL: <http://www.wjgnet.com/1948-5182/full/v9/i18/815.htm> DOI: <http://dx.doi.org/10.4254/wjh.v9.i18.815>

INTRODUCTION

Despite of the limited data regarding the occurrence of acute kidney injury (AKI) after partial hepatectomy, the reported incidence ranges from 0.9% to 15.1%^[1-4]. A comprehensive analysis of the scarce data^[5] is also hampered by the lack of consensus in the exact definition of AKI after liver resection.

Candidates for liver resections often present with multiple potential risk factors regarding postoperative AKI, such as excessive bleeding during the hepatectomy, and the occurrence of post-hepatectomy liver failure (PLF)^[2,3,5-7]. Eventually, patients can have a combination of insults, that can be aggravated by distributive circulatory derangements by sepsis^[2,3,5-8] or exposure to nephrotoxic drugs^[9].

The hemodynamic changes in patients after major liver resections, mainly in patients with underlying chronic liver injury, may simulate those of patients with acute liver failure or cirrhosis^[10]. Thus, the current criteria suggested by the International Club of Ascites (ICA) for definition of AKI would be the most appropriate criteria for these patients^[11], since urine output measurement and static serum creatinine (sCr) levels are not included in ICA criteria.

Assuming post-operative AKI as primary endpoint, the aim of the present report was to identify the risk factors for the occurrence of this serious complication after partial hepatectomies.

MATERIALS AND METHODS

This report is based on a historical cohort study of patients

who underwent partial hepatectomy from January 2008 to July 2016 at the Hepatobiliary Surgery Department of Cancer Hospital-UOPECCAN. Patients with evidence of dialytic chronic renal dialysis at the time of surgery, the need of emergency hepatectomy or patients who died at the intraoperative or immediate postoperative period (within the first 24 h after the procedure) were excluded. The study was approved by the Research Ethics Board at West Parana University (No. 1.665.135; July 2016), and the need for informed written consent was waived. The study was conformed to the ethical guidelines of the 1975 Declaration of Helsinki.

Preoperative data

The data collected included: Patient demographic data, preoperative use of nonsteroidal anti-inflammatory drugs, angiotensin-converting enzyme and inhibitors, the presence of comorbidities including: Non-dialytic chronic kidney disease (CKI), defined as estimated glomerular filtration rate (eGFR) less than 60 mL/min per 1.73 m²^[12], liver cirrhosis with Model End- Liver Disease (MELD) score calculation^[13], biliary obstruction and prior exposure to chemotherapy.

Preoperative baseline laboratory tests values were obtained from the patient electronic charts in the previous 3 mo, and in patients with more than one value, the value closest to the hospital admission date were selected. Laboratory tests included: Serum dosages of urea, creatinine, sodium, potassium, bilirubin, and albumin, International Normalized Ratio value, serum platelet count and eGFR value calculation according to the formula^[14]:

$$\text{eGFR: mL/min per 1.73 m}^2 = k \times 186 \times (\text{sCr})^{-1.15} \times (\text{age})^{-0.203},$$

$$K = 1 \text{ (if male) or } 0.72 \text{ (if female)}$$

Intraoperative and surgical data

The surgical and anesthetic covariates recorded were: Open or laparoscopic resection, extent of liver resection (major hepatectomy was defined as resection of at least three Couinaud liver segments), resection modalities according to Brisbane nomenclature^[15], type of vascular clamping of the liver (intermittent Pringle maneuver^[16], continuous Pringle maneuver^[17] or total vascular exclusion^[18]), segment I resection, two-stage resection^[19], associated extrahepatic resection, complex vascular reconstruction (portal vein, hepatic artery or hepatic veins, with or without prothesis), regional lymphadenectomy (hepatic pedicle lymph nodes^[20]), intraoperative transfusions of red blood cells, and intraoperative hemodynamic instability, defined as a sustained systolic blood pressure less than 90 mmHg or more than 40 mmHg below the patient's usual systolic blood pressure during 30 min.

Postoperative data and complications

Similarly to the preoperative laboratory blood tests, we retrieved its values in the postoperative period, including the most altered values in the first 30 postoperative days.

Postoperative complications the first 30 postoperative

Table 1 Postoperative overall complications and acute kidney injury staging according to International Club of Ascites^[11], risk, injury, failure, loss, end-stage^[27] and Acute Kidney Injury Network^[28] criteria (*n* = 446) *n* (%)

Overall complications	113 (25.3)
Overall complications (Clavien-Dindo classification)	
I	46 (10.3)
II	25 (5.6)
III a/b	18 (4.0)
IV a/b	7 (1.6)
V (death)	17 (3.8)
AKI (ICA)	80 (17.9)
I	26 (5.8)
II	21 (4.7)
III	33 (7.4)
AKI (RIFLE)	70 (15.7)
Risk	16 (3.6)
Injury	21 (4.7)
Failure	33 (7.4)
AKI (AKIN)	80 (17.9)
I	26 (5.8)
II	21 (4.7)
III	32 (7.2)
HRS	11 (2.5)
RRT (hemodialyses)	9 (2.0)

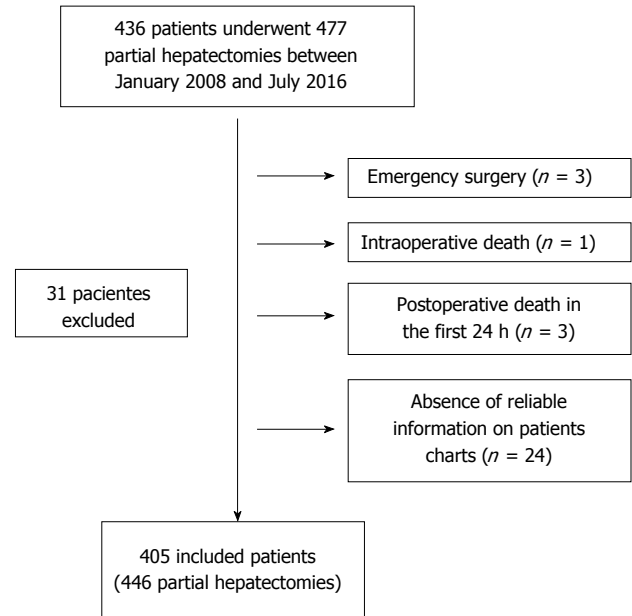
AKI: Acute kidney injury; ICA: International Club of Ascites; RIFLE: Risk, injury, failure, loss, end-stage; AKIN: Acute Kidney Injury Network; HRS: Hepatorenal syndrome; RRT: Renal replacement therapy.

days recorded were: Post-hepatectomy haemorrhage (PHH)^[21], post-hepatectomy liver failure (PHLF)^[22], biliary fistula^[23], postoperative ascites, wound infection^[24], pulmonary complications, including pulmonary infection^[25], acute respiratory distress syndrome and acute lung injury^[26], cardiovascular complications, including coronary insufficiency, cardiac arrhythmias, peripheral thrombosis, thromboembolism, and stroke^[5].

The occurrence and staging of AKI were defined according to the ICA^[11] criteria, although the RIFLE^[27] and AKIN^[28] criteria were used for comparative purposes (Table 1). The use of aminoglycosides, renal replacement therapy (hemodialysis), the occurrence of hepatorenal syndrome (HRS)^[11] and hospitalization time in days were recorded. The overall complications were classified according to Clavien-Dindo classification for postoperative complications^[29].

Statistical analysis

To ensure the stability of our multivariate model, the sample size of the study was determined based on the results of a historical cohort not published in our Hepatobiliary Surgery Department, with an incidence of ARF after partial hepatectomies fixed at 18%, ensuring the adequate number of events per variable^[30]. Categorical variables were expressed in absolute numbers and percentages were compared by the χ^2 test or Fisher's exact test when indicated. Continuous variables were expressed as absolute and mean \pm SD, and the comparison by the Student's *t*-test or non-parametric Mann-Whitney test after checking the normality assumptions by the Shapiro-

**Figure 1** Flow chart outlining the included and excluded patients in the study.

Wilk test. The variables selected in the univariate model ($P < 0.05$) were tested in the multiple logistic regression model to identify independent binary predictors on the occurrence of postoperative AKI. The results of the model were expressed by means of the odds ratio, together with the corresponding 95% CIs and the *p* values of the Wald test. A value of $P < 0.05$ (two-tailed) was considered significant. Statistical calculations were made with the software GPower 3.0.10 and SPSS 16.0 package for Windows.

RESULTS

During the period from January 2008 to July 2016, 436 patients underwent liver resection surgery, of which 31 patients were excluded, with 405 included patients in the study for the final analysis (Figure 1).

Of the total of included patients, 271 underwent minor partial hepatectomies (60.7%) and 175 patients (39.3%) underwent major resections, and the most common resection modalities according to Brisbane nomenclature^[14] were bisegmentectomy in 105 patients, segmentectomy in 103 patients, right hepatectomy in 85 patients, non-anatomical resections in 63 patients and left hepatectomy in 45 patients. The segment I were resected in 31 patients.

The most common indications for partial hepatectomy in patients with malignant tumors were colorectal cancer metastases 183 patients (41%) and hepatocellular carcinoma in 75 patients (16.8%), and patients with benign tumors were hepatic adenoma in 35 patients (7.8%) and hepatic hemangioma in 15 patients (3.4%).

Table 2 shows the clinical data of the patients prior the 466 partial hepatectomies according to the occurrence of AKI. It is observed that in the AKI group the prevalence

Table 2 Preoperative patient characteristics according to the occurrence of postoperative acute kidney injury in 466 partial hepatectomies *n* (%)

	No AKI (<i>n</i> = 366)	AKI (<i>n</i> = 80)	<i>P</i>
Gender, male	180 (49.2)	43 (53.8)	0.269
Age (years), mean (SD)	54.6 (16.57)	57.4 (16.10)	0.842
ACE inhibitors	19 (5.2)	10 (12.5)	0.210
NSAIDs	26 (7.1)	10 (12.5)	0.082
Non-dialytic CKI	1 (0.27)	8 (10.0)	< 0.001
Diabetes mellitus	44 (12.0)	14 (17.5)	0.121
Systemic arterial hypertension	70 (19.1)	15 (18.8)	0.467
Preoperative chemotherapy	85 (23.2)	24 (30.0)	0.402
Cirrhosis	23 (6.3)	10 (12.5)	0.042
MELD score, mean (SD)	7.67 (1.15)	8.05 (1.05)	0.020
Biliary obstruction	6 (1.6)	13 (16.2)	< 0.001
Baseline laboratory tests			
Serum urea (mg/dL), mean ± SD	31.45 ± 10.71	35.63 ± 23.77	0.021
Serum creatinine (mg/dL), mean ± SD	0.90 ± 0.71	0.98 ± 0.62	0.229
eGFR (mL/min per square meter), mean ± SD	98.38 ± 51.32	89.86 ± 35.46	0.944
Sodium (mEq/L), mean ± SD	135.67 ± 3.25	134.25 ± 3.00	0.350
Potassium (mEq/L), mean ± SD	4.44 ± 0.63	4.34 ± 0.75	0.697
INR, mean ± SD	1.13 ± 0.45	1.14 ± 0.20	0.912
Bilirubin (mg/dL), mean ± SD	1.63 ± 3.05	2.84 ± 3.95	0.002
Albumin (g/dL), mean ± SD	3.61 ± 0.87	3.41 ± 0.92	0.505
Platelets (mm ³), mean ± SD	211869.55 ± 103744.67	215522.81 ± 115186.57	0.129

AKI: Acute kidney injury; ACE: Angiotensin conversion enzyme; NSAIDs: Non-steroidal anti-inflammatory drugs; CKI: Chronic kidney injury; MELD: Model for End-Stage Liver Disease; INR: International normalized ratio.

Table 3 Intraoperative characteristics of the 446 liver resections according to the occurrence of postoperative acute kidney injury *n* (%)

	No AKI (<i>n</i> = 366)	AKI (<i>n</i> = 80)	<i>P</i>
Surgical approach			0.071
Open	343 (93.7)	79 (98.8)	
Laparoscopic	23 (6.3)	1 (1.2)	
Extention of resection			0.002
Major resection	128 (35.2)	45 (56.2)	
Minor resection	238 (64.8)	35 (43.8)	
Tumoral histology			0.134
Benign	70 (19.1)	6 (7.5)	
Malignant	296 (80.9)	74 (92.5)	
Segment I resection	23 (6.3)	8 (10.0)	0.098
Two-stage hepatectomy	26 (7.1)	6 (7.5)	0.439
Intermittent Pringle maneuver (15' \ 5')	124 (33.9)	31 (38.8)	0.438
Continuous Pringle maneuver	26 (7.1)	10 (12.5)	0.254
Total vascular exclusion	6 (1.6)	2 (2.5)	0.212
Complex vascular reconstruction	6 (1.6)	1 (1.2)	0.634
Regional lymphadenectomy	86 (23.5)	25 (31.2)	0.155
Associated extrahepatic resection	27 (7.4)	10 (12.5)	0.103
Intraoperative instability	26 (7.1)	25 (31.2)	< 0.001
Red blood cell transfusion	31 (8.5)	23 (28.8)	< 0.001

AKI: Acute kidney injury.

of non-dialytic CKI and cirrhosis were higher, as well as higher MELD scores and biliary obstruction prior to partial hepatectomy. Regarding preoperative laboratory tests, the AKI group had higher bilirubin levels than non-AKI group, 2.84 ± 3.95 mg/dL vs 1.63 ± 3.05 mg/dL, respectively.

Overall and renal postoperative complications rates are shown in Table 1. A total of 113 patients (25.3%) presented some type of complication, and according to

the Dindo-Clavien scale, the complications grade I were the most common, occurring in 46 patients (10.3%). According to ICA criteria, AKI occurred in 80 patients (17.9%), as well as by the AKIN criteria. A slight difference in the incidence of AKI was observed according to RIFLE criteria (15.7%).

Regarding surgical and intraoperative information, patients with AKI underwent more extensive surgical procedures (major hepatectomies), and especially, had significantly higher rates of hemodynamic instability and red blood cell transfusion during liver resections than non-AKI patients, 31.2% vs 7.1% and 28.8% vs 8.5%, respectively, with $P < 0.001$ for both variables (Table 3).

According to the postoperative laboratory tests (Table 4), patients with AKI had significantly higher levels of urea and creatinine after surgery, with a significant lower eGFR, 53.73 ± 34.38 mL/min per square meter vs 83.24 ± 60.04 mL/min per square meter ($P < 0.001$).

In the postoperative evolution, patients with AKI had higher rates of IHPH (25%), PHH (11.2%), sepsis (16.2%) and longer hospital stay (12.20 ± 9.41 d) (Table 4). According to the univariate model (Table 5), six covariates were statistically more frequent in the AKI group and the six were confirmed in the multiple logistic regression model as predictors: MELD score, the presence of biliary obstruction and non-dialytic CKI in the preoperative period, intraoperative hemodynamic instability, and finally PHH and sepsis in the postoperative period.

DISCUSSION

This study aimed to identify the main risk factors for AKI in the postoperative period of partial hepatectomies.

Table 4 Postoperative laboratory tests values and complications after 466 partial hepatectomies according to the occurrence of postoperative acute kidney injury *n* (%)

	No AKI (<i>n</i> = 366)	AKI (<i>n</i> = 80)	<i>P</i>
Laboratory tests			
Serum urea (mg/dL), mean ± SD	47.61 ± 49.36	82.19 ± 77.45	< 0.001
Serum creatinine (mg/dL), mean ± SD	1.29 ± 1.16	2.29 ± 2.21	< 0.001
eGFR (ml/min/m ²), mean ± SD	83.24 ± 60.04	53.73 ± 34.38	< 0.001
Sodium (mEq/L), mean ± SD	132.88 ± 4.27	132.29 ± 5.55	0.385
Potassium (mEq/L), mean ± SD	4.86 ± 0.81	5.16 ± 0.94	0.013
INR, mean ± SD	1.82 ± 2.46	2.08 ± 1.161	0.438
Bilirubin (mg/dL), mean ± SD	3.46 ± 4.54	4.54 ± 6.84	0.001
Albumin (g/dL), mean ± SD	2.58 ± 0.62	2.36 ± 0.59	0.069
Platelets (mm ³), mean ± SD	144101.93 ± 120446.829	132906.89 ± 113193.18	0.518
Aminoglycosides	7 (1.9)	3 (3.8)	0.341
PHLF	7 (1.9)	21 (26.3)	< 0.001
A	4 (1.1)	3 (3.8)	
B	3 (0.8)	10 (12.5)	
C	0 (0)	8 (10.0)	
PHH	1 (0.3)	9 (11.3)	< 0.001
A	0 (0)	2 (2.5)	
B	0 (0)	4 (5.0)	
C	1 (0.3)	3 (3.8)	
Biliary fistula	25 (6.8)	10 (12.5)	0.086
A	15 (4.1)	6 (7.5)	
B	7 (1.9)	3 (3.8)	
C	3 (0.8)	1 (1.2)	
Postoperative ascites	58 (15.9)	23 (28.8)	0.059
Wound infection	13 (3.6)	7 (8.8)	0.062
Pulmonary complications	15 (4.1)	6 (7.5)	0.177
Cardiovascular complications	7 (1.9)	2 (2.5)	0.501
Sepsis	2 (0.5)	13 (16.2)	< 0.001
Hospital stay (d), mean ± SD	6.68 ± 3.65	12.20 ± 9.41	0.008

AKI: Acute kidney injury; eGFR: Estimated glomerular filtration rate; PHLF: Post-hepatectomy liver failure; PHH: Post-hepatectomy haemorrhage.

Table 5 Univariate and logistic regression analyses of risk factors for acute kidney injury

Univariate analyses	Multiple logistic regression				
	<i>P</i>	OR	95%CI	<i>P</i>	
Extent of resection	0.002	2.249	1.217	4.156	0.010
Biliary obstruction	< 0.001	10.240	3.094	33.891	< 0.001
Hemodynamics instability	< 0.001	5.244	1.337	20.568	0.017
Red blood cell transfusion	< 0.001				0.244
Cirrhosis	0.042				0.241
MELD score	0.020	4.342	1.347	15.654	0.046
Sepsis	< 0.001	11.609	3.185	39.911	< 0.001
Posthepatectomy haemorrhage	< 0.001	12.652	7.769	53.612	< 0.001
CKI	< 0.001	8.975	1.533	44.675	0.022

AKI: Acute kidney injury; OR: Odds ratio; MELD: Model for End-Stage Liver Disease; CKI: Chronic kidney injury.

There is a certain disparity of the available criteria for postoperative AKI definition in these situations, thus, we adopted the current criteria suggested by the ICA^[11] for definition of AKI in cirrhotic patients. In patients eligible for partial hepatectomy with underlying liver diseases or who underwent major liver resections, often the both, the ICA criteria^[11] do not include unreal measurements for these patients, such as static sCr measurements and urine output.

The incidence of AKI in the present study according to ICA and AKIN criteria was 17.9%, and according to RIFLE criteria was 15.7%. These AKI incidence were higher than other publications on the subject^[1-5]. The

AKIN and RIFLE criteria were applied for comparison, and this slight underestimation of AKI by RIFLE criteria can be probably explained by the fact that the ICA and AKIN criteria consider as stage I AKI a small increase of 0.3 mg/dL in sCr.

Including AKI, the overall complication rate in this study was 25.3%, and the mortality rate was 3.8%, that is comparable to the results of two large retrospective studies evaluating morbidity and mortality of partial hepatectomies^[31,32].

The present study did not neglect the analysis of the two main AKI risk factors after partial hepatectomies, which would be perioperative bleeding and PHLF^[6]. Peri-

operative haemorrhage with renal hypoperfusion^[6], with or without the deleterious effects of blood transfusion^[3], was a strong predictor of postoperative AKI in this study, reflected by intraoperative hemodynamic instability and posthepatectomy haemorrhage. An increased renal susceptibility to the perioperative renal ischemia^[22-25], such as in CKI, was a predictor in the authors' series.

Additionally, it is expected that major resections may have larger blood losses during operation and higher incidence of PHLF as well, it was corroborated by the significant influence of major resections on AKI occurrence, according to our logistic regression model. In a recent report of a large series of liver resections for hepatocellular carcinoma, major liver resection was a predictor for postoperative AKI^[4].

For prevention of intraoperative bleeding, there are intraoperative maneuvers that may be crucial, such as vascular control of the liver^[2] and LCVP anesthesia^[1,33,34], preventing the back bleeding from hepatic veins. The Pringle maneuver (intermittent^[16] or continuous^[17]) is routinely applied in liver resections at the authors' Department, thus there was no difference between the groups, and LCVP anesthesia parameters were not evaluated.

Second factor relates to the occurrence of PLF with its distributive circulatory changes, which is a major cause of death after hepatic resection, and eventually can progress to HRS^[11]. Similar to the results from a previous report^[4], the MELD score^[13], a usefully and extensively validated tool for predicting liver failure progression, was a predictor of postoperative AKI, and the most important, it can be applied in the preoperative period.

The presence of biliary obstruction was an independent predictor of postoperative AKI according to the authors' results, and the mechanism by which bilirubin may be toxic to the kidneys seems to be inflammatory as well as obstructive^[35], and hemodynamic changes may also play a role in biliary cast nephropathy^[36]. In addition to the aforementioned effects, patients who are candidates for surgery in the presence of biliary obstruction with congestive cholestasis in the liver^[37,38] may undergo major hepatic resections, with consequent decrease in the volume of a functionally deficient liver parenchyma, predisposing for PHLF.

Eventually, patients can have combinations of renal insults that can be aggravated by sepsis^[2,3,5,6], which was an independent predictor in the authors' analysis. The septicemia and its hemodynamic and systemic repercussions may eventually coexist with liver failure, often being the final event of PHLF^[5].

The shortcomings of the current study, besides its retrospective nature, were the non-inclusion of anesthetic maneuvers among covariates, such as LCVP anesthesia, and the non-inclusion of hepatic steatosis, since it is a determinant of the functional quality of the parenchyma^[39,40]. As mentioned, the retrospective nature of the study did not allow the authors to include non-standardized non-reliable data.

In order to reduce the incidence of postoperative AKI after partial hepatectomy, a careful patient selection and preoperative resection planning are mandatory, specially

in the case of predisposing CKI, biliary obstruction and underlying cirrhosis, in which MELD score calculation can be extremely worthwhile^[41-43]. Measures for preventing sustained intraoperative hypotension and postoperative bleeding must be undertaken, as well as prevention and prompt treatment of sepsis. In the case of high risk patients for postoperative AKI, the nephrologist must be promptly involved in multidisciplinary discussions.

COMMENTS

Background

Acute kidney injury (AKI) is a serious complication after partial hepatectomy, however, there are limited published data regarding this subject, in addition, there is no consensus about the definition of AKI in these patients.

Research frontiers

The present study did not neglect the analysis of the two main AKI risk factors after partial hepatectomies, which would be perioperative bleeding, with or without the deleterious effects of blood transfusion, and post-hepatectomy liver failure.

Innovations and breakthroughs

The hemodynamic changes in patients after major liver resections may simulate those of patients with acute liver failure or cirrhosis. Thus, the current criteria suggested by the International Club of Ascites (ICA) for definition of AKI would be the most appropriate criteria for these patients.

Applications

In order to reduce the incidence of postoperative AKI after partial hepatectomy, a careful patient selection and preoperative resection planning are mandatory, specially in the case of predisposing CKI, biliary obstruction and underlying cirrhosis, in which Model for End-Stage Liver Disease score calculation can be extremely worthwhile.

Terminology

Candidates for liver resections often present with multiple potential risk factors regarding postoperative AKI, such as excessive bleeding during the hepatectomy, and the occurrence of post-hepatectomy liver failure (PLF). The current criteria suggested by the ICA for definition of AKI would be the most appropriate criteria for these patients. For prevention of intraoperative bleeding, there are intraoperative maneuvers that may be crucial, such as vascular control of the liver and low central venous pressure anesthesia. Second factor relates to the occurrence of PLF with its distributive circulatory changes, that eventually can progress to hepatorenal syndrome.

Peer-review

This paper was retrospectively analyzed the clinical data, and found some risk factors of acute kidney injury. The material was rich, the result was reasonable, and the discussion did have some valuable information.

REFERENCES

- 1 **Melendez JA**, Arslan V, Fischer ME, Wuest D, Jarnagin WR, Fong Y, Blumgart LH. Perioperative outcomes of major hepatic resections under low central venous pressure anesthesia: blood loss, blood transfusion, and the risk of postoperative renal dysfunction. *J Am Coll Surg* 1998; **187**: 620-625 [PMID: 9849736 DOI: 10.1016/s1072-7515(98)00240-3]
- 2 **Armstrong T**, Welsh FK, Wells J, Chandrakumaran K, John TG, Rees M. The impact of pre-operative serum creatinine on short-term outcomes after liver resection. *HPB (Oxford)* 2009; **11**: 622-628 [PMID: 20495629 DOI: 10.1111/j.1477-2574.2009.00094.x]
- 3 **Tomozawa A**, Ishikawa S, Shiota N, Cholvisudhi P, Makita K. Perioperative risk factors for acute kidney injury after liver resection surgery: an historical cohort study. *Can J Anaesth* 2015;

- 62: 753-761 [PMID: 25925634 DOI: 10.1007/s12630-015-0397-9]
- 4 **Lim C**, Audureau E, Salloom C, Levesque E, Lahat E, Merle JC, Compagnon P, Dhonneur G, Feray C, Azoulay D. Acute kidney injury following hepatectomy for hepatocellular carcinoma: incidence, risk factors and prognostic value. *HPB* (Oxford) 2016; **18**: 540-548 [PMID: 27317959 DOI: 10.1016/j.hpb.2016.04.004]
- 5 **Slankamenac K**, Breitenstein S, Held U, Beck-Schimmer B, Puhana MA, Clavien PA. Development and validation of a prediction score for postoperative acute renal failure following liver resection. *Ann Surg* 2009; **250**: 720-728 [PMID: 19809295 DOI: 10.1097/SLA.0b013e3181bdd840]
- 6 **Saner F**. Kidney failure following liver resection. *Transplant Proc* 2008; **40**: 1221-1224 [PMID: 18555153 DOI: 10.1016/j.transproce.2008.03.068]
- 7 **Peres LA**, Bredt LC, Cipriani RF. Acute renal injury after partial hepatectomy. *World J Hepatol* 2016; **8**: 891-901 [PMID: 27478539 DOI: 10.4254/wjh.v8.i21.891]
- 8 **Abuelo JG**. Normotensive ischemic acute renal failure. *N Engl J Med* 2007; **357**: 797-805 [PMID: 17715412 DOI: 10.1056/NEJMra064398]
- 9 **Moore RD**, Smith CR, Lipsky JJ, Mellits ED, Lietman PS. Risk factors for nephrotoxicity in patients treated with aminoglycosides. *Ann Intern Med* 1984; **100**: 352-357 [PMID: 6364908 DOI: 10.7326/0003-4819-100-3-352]
- 10 **Golriz M**, Majlesara A, El Sakka S, Ashrafi M, Arwin J, Fard N, Raisi H, Edalatpour A, Mehrabi A. Small for Size and Flow (SFSF) syndrome: An alternative description for posthepatectomy liver failure. *Clin Res Hepatol Gastroenterol* 2016; **40**: 267-275 [PMID: 26516057 DOI: 10.1016/J.Clinre.2015.06.024]
- 11 **Angeli P**, Gines P, Wong F, Bernardi M, Boyer TD, Gerbes A, Moreau R, Jalan R, Sarin SK, Piano S, Moore K, Lee SS, Durand F, Salerno F, Caraceni P, Kim WR, Arroyo V, Garcia-Tsao G. Diagnosis and management of acute kidney injury in patients with cirrhosis: revised consensus recommendations of the International Club of Ascites. *Gut* 2015; **64**: 531-537 [PMID: 25631669 DOI: 10.1136/gutjnl-2014-308874]
- 12 **Levin A**, Hemmelgarn B, Culleton B, Tobe S, McFarlane P, Ruzicka M, Burns K, Manns B, White C, Madore F, Moist L, Klarenbach S, Barrett B, Foley R, Jindal K, Senior P, Pannu N, Shurraw S, Akbari A, Cohn A, Reslerova M, Deved V, Mendelssohn D, Nesrallah G, Kappel J, Tonelli M. Guidelines for the management of chronic kidney disease. *CMAJ* 2008; **179**: 1154-1162 [PMID: 19015566 DOI: 10.1503/cmaj.080351]
- 13 **Kamath PS**, Wiesner RH, Malinchoc M, Kremers W, Therneau TM, Kosberg CL, D'Amico G, Dickson ER, Kim WR. A model to predict survival in patients with end-stage liver disease. *Hepatology* 2001; **33**: 464-470 [PMID: 11172350 DOI: 10.1053/jhep.2001.22172]
- 14 **Launay-Vacher V**, Oudard S, Janus N, Gligorov J, Pourrat X, Rixe O, Morere JF, Beuzebec P, Deray G; Renal Insufficiency and Cancer Medications (IRMA) Study Group. Prevalence of Renal Insufficiency in cancer patients and implications for anticancer drug management: the renal insufficiency and anticancer medications (IRMA) study. *Cancer* 2007; **110**: 1376-1384 [PMID: 17634949 DOI: 10.1002/cncr.22904]
- 15 **Pang YY**. The Brisbane 2000 terminology of liver anatomy and resections. *HPB* 2000; **2**: 333-39. *HPB* (Oxford) 2002; **4**: 99; author reply 99-100 [PMID: 18332933 DOI: 10.1080/136518202760378489]
- 16 **Belghiti J**, Noun R, Malafosse R, Jagot P, Sauvanet A, Pierangeli F, Marty J, Farges O. Continuous versus intermittent portal triad clamping for liver resection: a controlled study. *Ann Surg* 1999; **229**: 369-375 [PMID: 10077049 DOI: 10.1159/000108325]
- 17 **Li AK**, Mok SD. Simplified hepatectomy: the tourniquet method. *Aust N Z J Surg* 1989; **59**: 161-163 [PMID: 2920001 DOI: 10.1111/j.1445-2197.1989.tb01489.x]
- 18 **Delva E**, Nordlinger B, Parc R, Lienhart A, Hannoun L, Huguet C. Hepatic vascular exclusion (HVE) for major liver resections. *Int Surg* 1989; **72**: 78-81 [PMID: 3610538]
- 19 **Adam R**, Laurent A, Azoulay D, Castaing D, Bismuth H. Two-stage hepatectomy: A planned strategy to treat irresectable liver tumors. *Ann Surg* 2000; **232**: 777-785 [PMID: 11088072 DOI: 10.1097/SLA.0b013e3181907fd9]
- 20 **Jaeck D**. The significance of hepatic pedicle lymph nodes metastases in surgical management of colorectal liver metastases and of other liver malignancies. *Ann Surg Oncol* 2003; **10**: 1007-1011 [PMID: 14597437 DOI: 10.1245/ASO.2003.09.903]
- 21 **Rahbari NN**, Garden OJ, Padbury R, Maddern G, Koch M, Hugh TJ, Fan ST, Nimura Y, Figueras J, Vauthey JN, Rees M, Adam R, Dematteo RP, Greig P, Usatoff V, Banting S, Nagino M, Capussotti L, Yokoyama Y, Brooke-Smith M, Crawford M, Christophi C, Makuuchi M, Büchler MW, Weitz J. Post-hepatectomy haemorrhage: a definition and grading by the International Study Group of Liver Surgery (ISGLS). *HPB* (Oxford) 2011; **13**: 528-535 [PMID: 21762295 DOI: 10.1111/j.1477-2574.2011.00319.x]
- 22 **Rahbari NN**, Garden OJ, Padbury R, Brooke-Smith M, Crawford M, Adam R, Koch M, Makuuchi M, Dematteo RP, Christophi C, Banting S, Usatoff V, Nagino M, Maddern G, Hugh TJ, Vauthey JN, Greig P, Rees M, Yokoyama Y, Fan ST, Nimura Y, Figueras J, Capussotti L, Büchler MW, Weitz J. Posthepatectomy liver failure: a definition and grading by the International Study Group of Liver Surgery (ISGLS). *Surgery* 2011; **149**: 713-724 [PMID: 21236455 DOI: 10.1016/j.surg.2010.10.001]
- 23 **Koch M**, Garden OJ, Padbury R, Rahbari NN, Adam R, Capussotti L, Fan ST, Yokoyama Y, Crawford M, Makuuchi M, Christophi C, Banting S, Brooke-Smith M, Usatoff V, Nagino M, Maddern G, Hugh TJ, Vauthey JN, Greig P, Rees M, Nimura Y, Figueras J, DeMatteo RP, Büchler MW, Weitz J. Bile leakage after hepatobiliary and pancreatic surgery: a definition and grading of severity by the International Study Group of Liver Surgery. *Surgery* 2011; **149**: 680-688 [PMID: 21316725 DOI: 10.1016/j.surg.2010.12.002]
- 24 **Horan TC**, Gaynes RP, Martone WJ, Jarvis WR, Emori TG. CDC definitions of nosocomial surgical site infections, 1992: a modification of CDC definitions of surgical wound infections. *Infect Control Hosp Epidemiol* 1992; **13**: 606-608 [PMID: 1334988 DOI: 10.1017/S0195941700015241]
- 25 **Kelly E**, MacRedmond RE, Cullen G, Greene CM, McElvaney NG, O'Neill SJ. Community-acquired pneumonia in older patients: does age influence systemic cytokine levels in community-acquired pneumonia? *Respirology* 2009; **14**: 210-216 [PMID: 19272082 DOI: 10.1111/j.1440-1843.2008.01423.x]
- 26 **Raghavendran K**, Napolitano LM. Definition of ALI/ARDS. *Crit Care Clin* 2011; **27**: 429-437 [PMID: 21742209 DOI: 10.1016/j.ccc.2011.05.006]
- 27 **Bellomo R**, Ronco C, Kellum JA, Mehta RL, Palevsky P. Acute renal failure - definition, outcome measures, animal models, fluid therapy and information technology needs: the Second International Consensus Conference of the Acute Dialysis Quality Initiative (ADQI) Group. *Crit Care* 2004; **8**: R204-R212 [PMID: 15312219 DOI: 10.1186/cc2872]
- 28 **Mehta RL**, Kellum JA, Shah SV, Molitoris BA, Ronco C, Warnock DG, Levin A. Acute Kidney Injury Network: report of an initiative to improve outcomes in acute kidney injury. *Crit Care* 2007; **11**: R31 [PMID: 17331245 DOI: 10.1186/cc5713]
- 29 **Dindo D**, Demartines N, Clavien PA. Classification of surgical complications: a new proposal with evaluation in a cohort of 6336 patients and results of a survey. *Ann Surg* 2004; **240**: 205-213 [PMID: 15273542 DOI: 10.1097/01.sla.0000133083.54934.ae]
- 30 **Peduzzi P**, Concato J, Kemper E, Holford TR, Feinstein AR. A simulation study of the number of events per variable in logistic regression analysis. *J Clin Epidemiol* 1996; **49**: 1373-1379 [PMID: 8970487 DOI: 10.1016/S08954356(96)00236-3]
- 31 **Jarnagin WR**, Gonen M, Fong Y, DeMatteo RP, Ben-Porat L, Little S, Corvera C, Weber S, Blumgart LH. Improvement in perioperative outcome after hepatic resection: analysis of 1,803 consecutive cases over the past decade. *Ann Surg* 2002; **236**: 397-406; discussion 406-407 [PMID: 12368667 DOI: 10.1097/01.SLA.0000029003.66466.B3]
- 32 **Poon RT**, Fan ST, Lo CM, Liu CL, Lam CM, Yuen WK, Yeung C, Wong J. Improving perioperative outcome expands the role of

- hepatectomy in management of benign and malignant hepatobiliary diseases: analysis of 1222 consecutive patients from a prospective database. *Ann Surg* 2004; **240**: 698-708; discussion 708-710 [PMID: 15383797 DOI: 10.1097/01.sla.0000141195.66155.0c]
- 33 **Rees M**, Plant G, Wells J, Bygrave S. One hundred and fifty hepatic resections: evolution of technique towards bloodless surgery. *Br J Surg* 1996; **83**: 1526-1529 [PMID: 9014666 DOI: 10.1002/Bjs.1800831110]
 - 34 **Smyrniotis V**, Kostopanagiotou G, Theodoraki K, Tsantoulas D, Contis JC. The role of central venous pressure and type of vascular control in blood loss during major liver resections. *Am J Surg* 2004; **187**: 398-402 [PMID: 15006570 DOI: 10.1016/j.amjsurg.2003.12.001]
 - 35 **Ozturk H**, Terzi A, Ozturk H, Kukner A. Effect of sirolimus on renal injury induced by bile duct ligation in rats. *Acta Cir Bras* 2010; **25**: 401-406 [PMID: 20877949 DOI: 10.1590/S0102-86502010000500004]
 - 36 **Padillo FJ**, Cruz A, Espejo I, Barcos M, Gómez-Alvarez M, Muntané J. Alteration of the renal regulatory hormonal pattern during experimental obstructive jaundice. *Rev Esp Enferm Dig* 2009; **101**: 408-412 [PMID: 19630464 DOI: 10.4321/S1130-01082009000600006]
 - 37 **Cohnert TU**, Rau HG, Buttler E, Hernandez-Richter T, Sauter G, Reuter C, Schildberg FW. Preoperative risk assessment of hepatic resection for malignant disease. *World J Surg* 1997; **21**: 396-400; discussion 401 [PMID: 9143571 DOI: 10.1007/PL00012260]
 - 38 **Choti MA**, Sitzmann JV, Tiburi MF, Sumetchotimetha W, Rangsin R, Schulick RD, Lillemoe KD, Yeo CJ, Cameron JL. Trends in long-term survival following liver resection for hepatic colorectal metastases. *Ann Surg* 2002; **235**: 759-766 [PMID: 12035031 DOI: 10.1097/0000658-200206000-00002]
 - 39 **Belghiti J**, Hiramatsu K, Benoist S, Massault P, Sauvanet A, Farges O. Seven hundred forty-seven hepatectomies in the 1990s: an update to evaluate the actual risk of liver resection. *J Am Coll Surg* 2000; **191**: 38-46 [PMID: 10898182 DOI: 10.1016/S1072-7515(00)00261-1]
 - 40 **Kooby DA**, Fong Y, Surianawata A, Gonen M, Allen PJ, Klimstra DS, DeMatteo RP, D'Angelica M, Blumgart LH, Jarnagin WR. Impact of steatosis on perioperative outcome following hepatic resection. *J Gastrointest Surg* 2003; **7**: 1034-1044 [PMID: 14675713 DOI: 10.1016/j.gassur.2003.09.012]
 - 41 **Bruix J**, Castells A, Bosch J, Feu F, Fuster J, Garcia-Pagan JC, Visa J, Bru C, Rodés J. Surgical resection of hepatocellular carcinoma in cirrhotic patients: prognostic value of preoperative portal pressure. *Gastroenterology* 1996; **111**: 1018-1022 [PMID: 8831597 DOI: 10.1016/S0016-5085(96)70070-7]
 - 42 **Llovet JM**, Fuster J, Bruix J. Intention-to-treat analysis of surgical treatment for early hepatocellular carcinoma: resection versus transplantation. *Hepatology* 1999; **30**: 1434-1440 [PMID: 10573522 DOI: 10.1002/hep.510300629]
 - 43 **Bellavance EC**, Lumpkins KM, Mentha G, Marques HP, Capussotti L, Pulitano C, Majno P, Mira P, Rubbia-Brandt L, Ferrero A, Aldrighetti L, Cunningham S, Russolillo N, Philosophie B, Barroso E, Pawlik TM. Surgical management of early-stage hepatocellular carcinoma: resection or transplantation? *J Gastrointest Surg* 2008; **12**: 1699-1708 [PMID: 18709418 DOI: 10.1007/s11605-008-0652-2]

P- Reviewer: Morales-Gonzalez JA, Prieto J, Xu Z
S- Editor: Song XX **L- Editor:** A **E- Editor:** Li D





Published by **Baishideng Publishing Group Inc**
7901 Stoneridge Drive, Suite 501, Pleasanton, CA 94588, USA
Telephone: +1-925-223-8242
Fax: +1-925-223-8243
E-mail: bpgoffice@wjgnet.com
Help Desk: <http://www.f6publishing.com/helpdesk>
<http://www.wjgnet.com>

