

World Journal of *Gastroenterology*

World J Gastroenterol 2018 March 21; 24(11): 1181-1284



**REVIEW**

- 1181 Functional macrophages and gastrointestinal disorders

Liu YH, Ding Y, Gao CC, Li LS, Wang YX, Xu JD

ORIGINAL ARTICLE**Basic Study**

- 1196 *NOD2*- and disease-specific gene expression profiles of peripheral blood mononuclear cells from Crohn's disease patients

Schäffler H, Rohde M, Rohde S, Huth A, Gittel N, Hollborn H, Koczan D, Glass A, Lamprecht G, Jaster R

- 1206 Three-microRNA signature identified by bioinformatics analysis predicts prognosis of gastric cancer patients

Zhang C, Zhang CD, Ma MH, Dai DQ

Retrospective Cohort Study

- 1216 Differing profiles of people diagnosed with acute and chronic hepatitis B virus infection in British Columbia, Canada

Binka M, Butt ZA, Wong S, Chong M, Buxton JA, Chapinal N, Yu A, Alvarez M, Darvishian M, Wong J, McGowan G, Torban M, Gilbert M, Tyndall M, Krajden M, Janjua NZ

- 1228 Role of relevant immune-modulators and cytokines in hepatocellular carcinoma and premalignant hepatic lesions

Zekri AN, El Deeb S, Bahnassy AA, Badr AM, Abdellateif MS, Esmat G, Salama H, Mohanad M, El-dien AE, Rabah S, Abd Elkader A

Retrospective Study

- 1239 Serum autotaxin levels are correlated with hepatic fibrosis and ballooning in patients with non-alcoholic fatty liver disease

Fujimori N, Umemura T, Kimura T, Tanaka N, Sugiura A, Yamazaki T, Joshita S, Komatsu M, Usami Y, Sano K, Igarashi K, Matsumoto A, Tanaka E

- 1250 Epidemiological features of chronic hepatitis C infection caused by remunerated blood donors: A nearly 27-year period survey

Tan YW, Tao Y, Liu LG, Ye Y, Zhou XB, Chen L, He C

Clinical Trials Study

- 1259 Low-FODMAP vs regular rye bread in irritable bowel syndrome: Randomized SmartPill® study

Pirkola L, Laatikainen R, Lopenon J, Hongisto SM, Hillilä M, Nuora A, Yang B, Linderborg KM, Freese R

Prospective Study

- 1269** Fatty liver in hepatitis C patients post-sustained virological response with direct-acting antivirals

Noureddin M, Wong MM, Todo T, Lu SC, Sanyal AJ, Mena EA

- 1278** Low-pressure pneumoperitoneum with abdominal wall lift in laparoscopic total mesorectal excision for rectal cancer: Initial experience

Xia PT, Yusofu M, Han HF, Hu CX, Hu SY, Yu WB, Liu SZ

ABOUT COVER

Editorial board member of *World Journal of Gastroenterology*, Chang Moo Kang, MD, PhD, Associate Professor, Division of Hepatobiliary and Pancreatic Surgery, Department of Surgery, Yonsei University, Pancreaticobiliary Cancer Clinic, Yonsei Cancer Center, Severance Hospital, Seoul 120-752, South Korea

AIMS AND SCOPE

World Journal of Gastroenterology (*World J Gastroenterol*, *WJG*, print ISSN 1007-9327, online ISSN 2219-2840, DOI: 10.3748) is a peer-reviewed open access journal. *WJG* was established on October 1, 1995. It is published weekly on the 7th, 14th, 21st, and 28th each month. The *WJG* Editorial Board consists of 642 experts in gastroenterology and hepatology from 59 countries.

The primary task of *WJG* is to rapidly publish high-quality original articles, reviews, and commentaries in the fields of gastroenterology, hepatology, gastrointestinal endoscopy, gastrointestinal surgery, hepatobiliary surgery, gastrointestinal oncology, gastrointestinal radiation oncology, gastrointestinal imaging, gastrointestinal interventional therapy, gastrointestinal infectious diseases, gastrointestinal pharmacology, gastrointestinal pathophysiology, gastrointestinal pathology, evidence-based medicine in gastroenterology, pancreatology, gastrointestinal laboratory medicine, gastrointestinal molecular biology, gastrointestinal immunology, gastrointestinal microbiology, gastrointestinal genetics, gastrointestinal translational medicine, gastrointestinal diagnostics, and gastrointestinal therapeutics. *WJG* is dedicated to become an influential and prestigious journal in gastroenterology and hepatology, to promote the development of above disciplines, and to improve the diagnostic and therapeutic skill and expertise of clinicians.

INDEXING/ABSTRACTING

World Journal of Gastroenterology (*WJG*) is now indexed in Current Contents[®]/Clinical Medicine, Science Citation Index Expanded (also known as SciSearch[®]), Journal Citation Reports[®], Index Medicus, MEDLINE, PubMed, PubMed Central and Directory of Open Access Journals. The 2017 edition of Journal Citation Reports[®] cites the 2016 impact factor for *WJG* as 3.365 (5-year impact factor: 3.176), ranking *WJG* as 29th among 79 journals in gastroenterology and hepatology (quartile in category Q2).

EDITORS FOR THIS ISSUE

Responsible Assistant Editor: Xiang Li
Responsible Electronic Editor: Yan Huang
Proofing Editor-in-Chief: Lian-Sheng Ma

Responsible Science Editor: Ze-Mao Gong
Proofing Editorial Office Director: Jin-Lei Wang

NAME OF JOURNAL
World Journal of Gastroenterology

ISSN
ISSN 1007-9327 (print)
ISSN 2219-2840 (online)

LAUNCH DATE
October 1, 1995

FREQUENCY
Weekly

EDITORS-IN-CHIEF
Damian Garcia-Olmo, MD, PhD, Doctor, Professor, Surgeon, Department of Surgery, Universidad Autonoma de Madrid; Department of General Surgery, Fundacion Jimenez Diaz University Hospital, Madrid 28040, Spain

Stephen C Strom, PhD, Professor, Department of Laboratory Medicine, Division of Pathology, Karolinska Institutet, Stockholm 141-86, Sweden

Andrzej S Tarnawski, MD, PhD, DSc (Med), Professor of Medicine, Chief Gastroenterology, VA Long Beach Health Care System, University of California, Irvine, CA, 5901 E. Seventh Str., Long Beach,

CA 90822, United States

EDITORIAL BOARD MEMBERS
All editorial board members resources online at <http://www.wjgnet.com/1007-9327/editorialboard.htm>

EDITORIAL OFFICE
Ze-Mao Gong, Director
World Journal of Gastroenterology
Baishideng Publishing Group Inc
7901 Stoneridge Drive, Suite 501,
Pleasanton, CA 94588, USA
Telephone: +1-925-2238242
Fax: +1-925-2238243
E-mail: editorialoffice@wjgnet.com
Help Desk: <http://www.f6publishing.com/helpdesk>
<http://www.wjgnet.com>

PUBLISHER
Baishideng Publishing Group Inc
7901 Stoneridge Drive, Suite 501,
Pleasanton, CA 94588, USA
Telephone: +1-925-2238242
Fax: +1-925-2238243
E-mail: bpgoffice@wjgnet.com
Help Desk: <http://www.f6publishing.com/helpdesk>
<http://www.wjgnet.com>

PUBLICATION DATE
March 21, 2018

COPYRIGHT
© 2018 Baishideng Publishing Group Inc. Articles published by this Open-Access journal are distributed under the terms of the Creative Commons Attribution Non-commercial License, which permits use, distribution, and reproduction in any medium, provided the original work is properly cited, the use is non commercial and is otherwise in compliance with the license.

SPECIAL STATEMENT
All articles published in journals owned by the Baishideng Publishing Group (BPG) represent the views and opinions of their authors, and not the views, opinions or policies of the BPG, except where otherwise explicitly indicated.

INSTRUCTIONS TO AUTHORS
Full instructions are available online at <http://www.wjgnet.com/bpg/gerinfo/204>

ONLINE SUBMISSION
<http://www.f6publishing.com>

Prospective Study

Fatty liver in hepatitis C patients post-sustained virological response with direct-acting antivirals

Mazen Nouredin, Micaela M Wong, Tsuyoshi Todo, Shelly C Lu, Arun J Sanyal, Edward A Mena

Mazen Nouredin, Fatty Liver Program, Cedars-Sinai Medical Center, Los Angeles, CA 90048, United States

Mazen Nouredin, Division of Digestive and Liver Diseases, Cedars-Sinai Medical Center, Los Angeles, CA 90048, United States

Micaela M Wong, California Liver Research Institute, Pasadena, CA 91105, United States

Tsuyoshi Todo, Comprehensive Transplant Center, Department of Surgery, Cedars-Sinai Medical Center, Los Angeles, CA 90048, United States

Shelly C Lu, Division of Digestive and Liver Diseases, Cedars-Sinai Medical Center, Los Angeles, CA 90048, United States

Arun J Sanyal, Division of Gastroenterology, Hepatology and Nutrition, Department of Internal Medicine, School of Medicine, Virginia Commonwealth University, Richmond, VA 23298, United States

Edward A Mena, California Liver Research Institute, Pasadena, CA 91105, United States

ORCID number: Mazen Nouredin (0000-0003-2127-2040); Micaela M Wong (0000-0001-9912-2574); Tsuyoshi Todo (0000-0003-1264-9301); Shelly C Lu (0000-0003-2128-5407); Arun J Sanyal (0000-0001-8682-5748); Edward A Mena (0000-0003-0631-9525).

Author contributions: Nouredin M provided the study concept and design; Nouredin M, Wong MM and Mena EA contributed to acquisition of data; Nouredin M, Wong MM, Todo T, Lu SC and Sanyal AJ contributed to analysis and interpretation of data; Nouredin M drafted the manuscript; Nouredin M, Wong MM, Todo T, Lu SC, Sanyal AJ and Mena EA contributed to critical revision of the manuscript for important intellectual content; Nouredin M contributed to the statistical analysis; Nouredin M and Mena EA provided administrative and technical support and study supervision; Wong MM provided support for carrying out the study; all authors gave final approval of the version to be published and agree to be accountable for all aspects of the work in ensuring that questions related to the accuracy or integrity of

any part of the work are appropriately investigated and resolved.

Institutional review board statement: This study was approved by the Central Institutional Review Board.

Informed consent statement: Informed voluntary consent was acquired from all the study participants.

Conflict-of-interest statement: Nouredin M has been on the advisory board or a speaker for EchoSens North America, OWL, Intercept and Abbott; Nouredin M has received research support from Gilead, Galmed, Galectin, Conatus, Zydus and Shire; Nouredin M is a minor shareholder of Anaetos; Sanyal AJ has been a consultant to Intercept, Galectin, BMS, Nitto Denko, Nimbus, Aredlyx, Vivelyx, and Tandeva; Sanyal AJ has received grants from Gilead, Intercept, Novartis, Merck, BMS, and Tobira; Sanyal AJ has stock or stock options in Genfit, Akarna, Tiziana, Natural Shield, Durect, and Exhalenz. Mena EA has received research support from Galmed, Conatus, Shire, Merck and Gilead; Mena EA has been a consultant and advisor to Gilead, Abbvie, Merck, Bayer, and Grifalos; Mena EA is a member of the speakers' bureaus for Gilead, Abbvie, Merck, Bayer, Echosens North America and Grifalos; Mena EA owns stocks in Gilead and Galectin; The other authors report no conflicts of interest.

Data sharing statement: The statistical code and dataset are available from the corresponding author at mazen.nouredin@cshs.org. Consent for data sharing was not obtained but the presented data are anonymized and risk of identification is low.

Open-Access: This article is an open-access article which was selected by an in-house editor and fully peer-reviewed by external reviewers. It is distributed in accordance with the Creative Commons Attribution Non Commercial (CC BY-NC 4.0) license, which permits others to distribute, remix, adapt, build upon this work non-commercially, and license their derivative works on different terms, provided the original work is properly cited and the use is non-commercial. See: <http://creativecommons.org/licenses/by-nc/4.0/>

Manuscript source: Unsolicited manuscript

Correspondence to: Mazen Nouredin, MD, MHSc, Associate Professor, Division of Digestive and Liver Diseases,

Comprehensive Transplant Program, Cedars-Sinai Medical Center, 8900 Beverly Blvd, Suite 250, Los Angeles, CA 90048 United States. mazen.noureddin@cshs.org
Telephone: +1-310-4237088
Fax: +1-310-2488197

Received: December 3, 2017
Peer-review started: December 5, 2017
First decision: December 14, 2017
Revised: January 27, 2018
Accepted: March 3, 2018
Article in press: March 3, 2018
Published online: March 21, 2018

Abstract

AIM

To determine steatosis and fibrosis prevalence in hepatitis C patients after a sustained virological response achieved with direct-acting antivirals.

METHODS

Transient elastography with controlled attenuation parameter (CAP) was used to assess hepatic steatosis post-sustained virological response (SVR); the CAP technology was not available in the United States at study initiation. Liver stiffness/fibrosis was measured before and 47 wk after treatment completion. Patients with genotype 3 and patients with cirrhosis were excluded.

RESULTS

One hundred and one patients were included in the study. Post-SVR there were decreases from baseline in alanine aminotransferase (ALT) (63.1 to 17.8 U/L), aspartate aminotransferase (51.8 to 21.5 U/L) and fibrosis score (7.4 to 6.1 kPa) ($P < 0.05$). Post-SVR, 48 patients (47.5%) had steatosis on CAP; of these, 6.25% had advanced fibrosis. Patients with steatosis had higher body mass index (29.0 *vs* 26.1 kg/m²), glucose (107.8 *vs* 96.6 mg/dL), ALT (20.4 *vs* 15.3 mg/dL), CAP score (296.3 *vs* 212.4 dB/m) and fibrosis score (7.0 *vs* 5.3 kPa); $P < 0.05$. Interestingly, compared to baseline, both patients with and without steatosis had change in fibrosis score post-SVR (7.7 kPa *vs* 7.0 kPa and 7.0 kPa *vs* 5.3 kPa); alternatively, ($P < 0.05$) and therefore patients with steatosis continued to have clinically significant stiffness (≥ 7 kPa).

CONCLUSION

Fatty liver is very common in hepatitis C virus (HCV) patients post-SVR. These patients continue to have elevated mean fibrosis score (≥ 7 kPa) compared to those without fatty liver; some have advanced fibrosis. Long term follow up is needed to assess steatosis and fibrosis in HCV patients post-SVR.

Key words: Nonalcoholic fatty liver disease; Hepatitis C; Fibrosis; Steatosis; Sustained virological response;

Direct-acting antivirals

© **The Author(s) 2018.** Published by Baishideng Publishing Group Inc. All rights reserved.

Core tip: This is the first prospective study to assess the prevalence of fatty liver in hepatitis C patients who have achieved a sustained virological response with direct-acting antivirals. The study's findings that fatty liver is present in 47.5% of these patients and that some steatotic patients have clinically significant fibrosis despite normal liver enzymes should raise awareness of the post-sustained virological response (SVR) prevalence of fatty liver and the importance of post-SVR assessment of steatosis and fibrosis and long-term follow up with these patients.

Noureddin M, Wong MM, Todo T, Lu SC, Sanyal AJ, Mena EA. Fatty liver in hepatitis C patients post-sustained virological response with direct-acting antivirals. *World J Gastroenterol* 2018; 24(11): 1269-1277 Available from: URL: <http://www.wjgnet.com/1007-9327/full/v24/i11/1269.htm> DOI: <http://dx.doi.org/10.3748/wjg.v24.i11.1269>

INTRODUCTION

With the growing epidemic of obesity and type 2 diabetes mellitus, nonalcoholic fatty liver disease (NAFLD) currently has a worldwide prevalence of 25.24% (approximately 1.8 billion people)^[1], making it the most common cause of chronic liver disease (CLD), followed by chronic hepatitis B (CHB, 257 million people), and chronic hepatitis C (CHC, 71 million people)^[2]. In the United States, NAFLD and CHC are the two most common CLD causes^[3], and nonalcoholic steatohepatitis (NASH)-associated cirrhosis is the second leading indication for liver transplant (LT) after hepatitis C virus (HCV)-associated end-stage liver disease^[4]. With the recent study that showed that between 2004 and 2013 the number of adult patients with NASH awaiting LTs almost tripled^[4], combined with the rapidly expanding population of CHC patients achieving sustained virological responses (SVRs) with direct-acting antivirals (DAAs), it is thought that NASH may soon become the leading indication for LT. NAFLD prevalence is now estimated to be approximately 30% in the United States^[5].

NAFLD is usually diagnosed by detecting steatosis after excluding other causes of liver disease. However, hepatic steatosis may occur in patients with other liver diseases, often in those with obesity and other metabolic factors typical of NAFLD, potentially creating an additive or synergistic combination of steatosis, oxidative damage, cellular impairment and other factors that may worsen liver injury^[6]. Steatosis is known to escalate liver necroinflammatory activity and accelerate fibrosis in CHC patients^[7]. The hepatic steatosis prevalence in

CHC patients has been reported to be approximately 50% (range 30%-70%)^[8]. The mechanisms leading to steatosis in CHC have not been fully elucidated but may include host factors leading to insulin resistance and interactions between lipid metabolism pathways and the HCV core protein^[9,10]. It has been proposed that HCV's effects on hepatic lipid metabolism may inhibit the export proteins needed for the assembly and secretion of very low density lipoproteins (VLDL), resulting in triglyceride accumulation in the liver^[8]. Therefore, hepatic steatosis in HCV patients may result from some combination of viral and metabolic factors, other than in genotype 3 (GNT3) patients in which the steatosis may be due to direct effects of genotype 3 viral proteins^[11].

Historically, an SVR with interferon was not associated with steatosis resolution except in GNT3 patients which has a different steatosis etiology^[10]. In patients with an SVR achieved with DAAs steatosis prevalence is unknown. In this prospective, cross-sectional study, we assessed steatosis prevalence and degree of fibrosis in CHC patients who achieved an SVR through treatment with DAAs.

MATERIALS AND METHODS

Study design

This is a prospective, cross-sectional study of patients with CHC who achieved an SVR after treatment with DAAs. The patients in this cohort had been treated with a variety of direct-acting antiviral regimens: ledipasvir/sofosbuvir (Harvoni), 75 patients; elbasvir/grazoprevir (Zepatier), 1 patient; dasabuvir/ombitasvir/paritaprevir/ritonavir (Viekira), 7 patients; dasabuvir/ombitasvir/paritaprevir/ritonavir with ribavirin, 2 patients; sofosbuvir (Sovaldi) with ribavirin, 9 patients; sofosbuvir with daclatasvir (Daklinza), 1 patient; sofosbuvir with simeprevir (Olysio), 2 patients; sofosbuvir/velpatasvir (Epclusa), 4 patients. Between January 2016 and March 2017, 101 adult patients were enrolled, excluding patients with other liver diseases, secondary causes of steatosis (*e.g.*, medications, excessive alcohol), and GNT3 which has a different steatosis etiology. After achieving an SVR, patients were invited to undergo standardized history and anthropometric examination, laboratory testing, and transient elastography (TE) at the California Liver Research Institute in Los Angeles. This study received approval and was done under IRB protocol CLRI-01. Ethical guidelines for human research were followed. All patients signed informed consent.

Transient elastography

TE was performed using the FibroScan 502 Touch model (M Probe, XL Probe; Echosens, Paris, France) by an experienced TE-certified technician blinded to clinical data. Patients were asked to fast for at least 4 h prior to the examination. The procedure was performed in the supine position with the right arm adducted while holding the breath for 10 s. All patients were

first scanned with the M probe (3.5 MHz) over the right liver lobe. If indicated by the machine, patients were re-evaluated using the XL probe (2.5 MHz). Ten measurements were made and the interquartile range was less than 30%. We defined test failure when no stiffness measurement was obtained or there were unreliable measurements (success rate < 60% or interquartile range/median > 30%)^[12-14].

Liver stiffness/fibrosis scores were measured before and within one year after completion of HCV treatment with DAAs; the median time interval between treatment completion and post-SVR TE was 47 wk, with no significant difference between patients with and without steatosis. Simultaneous liver steatosis measurements were obtained using controlled attenuation parameter (CAP) values in dB/m only after SVR achievement as the technology was not available in the United States at the study's initiation. Based on the recent large patient data meta-analysis of studies containing histology-verified CAP data for grading of steatosis that determined optimal cut-offs for CAP^[15], steatosis was defined as ≥ 248 dB/M. Clinically significant stiffness was defined as ≥ 7 kilopascal (kPa)^[16,17].

Patients' specifications

We included patients if they were 18 years or older, were treated for CHC using DAAs and were able to provide informed consent. We excluded patients if they (1) had a history of significant alcohol intake within 2 years of recruitment (14 drinks/wk for men or 7 drinks/wk for women) as assessed by the hepatologist as well as the Alcohol Use Disorders Identification Test-Consumption (AUDIT-C) questionnaire; (2) had secondary causes of fatty liver such as medications (for example, methotrexate) or other infectious causes (for example, human immunodeficiency virus); (3) had evidence of liver diseases other than hepatitis C; (4) were HCV GNT3 as it is thought to have a different underlying etiology of steatosis related to the virus (viral steatosis) and we sought to investigate this genotype separately; or (5) had cirrhosis based on imaging or FibroScan. All the following information was collected: medical history, age, sex, height, weight, body mass index (BMI), ethnic background, and vital signs.

Laboratory measurements

The biochemical tests that were measured included aspartate aminotransferase (AST), alanine aminotransferase (ALT), alkaline phosphatase, total bilirubin, direct bilirubin, albumin, fasting glucose, hemoglobin A1c, triglycerides, total cholesterol, high-density lipoprotein, and low-density lipoprotein. Other measurements included platelets, prothrombin time, and international normalized ratio.

Statistical analysis

The chi-square test was used to compare between categorical variables, and a paired *t* test to compare

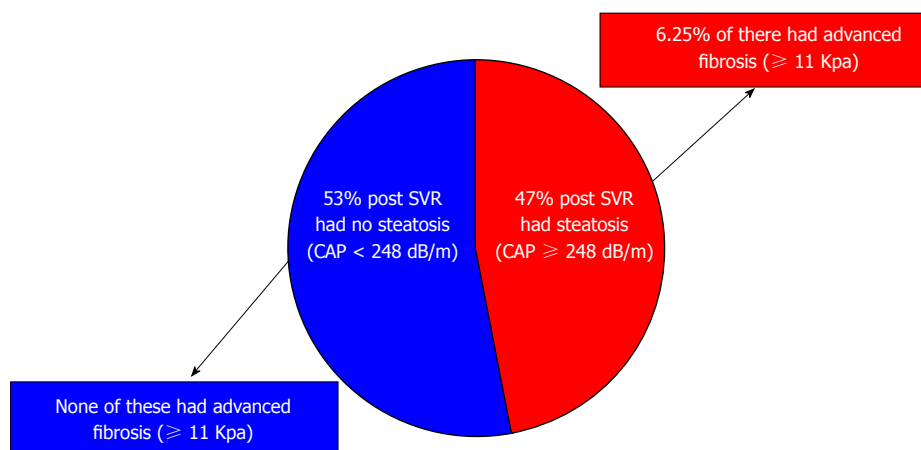


Figure 1 Post-sustained virological response steatosis prevalence in hepatitis C virus patients and advanced fibrosis prevalence in those with and without steatosis. SVR: Sustained virological response; CAP: Controlled attenuation parameter.

mean differences between continuous variables. Primary and secondary comparisons within groups were calculated with paired *t* tests, two-tailed, independent-sample *t* tests, or nonparametric tests including Wilcoxon signed-rank test as applicable. A two-tailed $P < 0.05$ was considered statistically significant. Statistical analyses were performed with SPSS 21.

RESULTS

Patient characteristics

Between January 2016 and March 2017, 101 adult CHC patients who achieved SVR were enrolled. At baseline the average age for the entire cohort was 60.3 ± 10.7 years and BMI was 27.6 ± 6.9 kg/m²; 37% were Caucasian and 26% were Hispanic. The average fibrosis score was 7.4 ± 1.9 kPa. HCV genotypes were: GNT1 (85%), GNT2 (14%), and GNT4 (1%) (Table 1).

Changes post-SVR

Changes in the Entire Cohort: As expected, post-SVR HCV viral load was undetectable compared to prior baseline (prior to starting treatment) (0.0 ± 0.0 IU/mL vs 6.2 ± 0.9 IU/mL, $P < 0.0001$). ALT and AST decreased to normal levels post-SVR compared to baseline (17.8 ± 12.3 U/L vs 63.1 ± 62.6 U/L for ALT, $P < 0.0001$ and 21.5 ± 8.0 U/L vs 51.8 ± 41.1 U/L for AST, $P < 0.0001$). There was no change in BMI post-SVR compared to baseline (27.5 ± 6.9 kg/m² vs 27.6 ± 6.9 kg/m²). In the overall cohort, post-SVR there was a significant decrease in fibrosis score on TE (7.4 ± 1.9 kPa to 6.1 ± 3.6 kPa; $P = 0.013$), a decline that is considered clinically significant.

Changes in patients with and without steatosis post-SVR:

Post-SVR, 48 patients (47.5%) had steatosis with mean CAP score 296.3 ± 37.4 compared to a mean CAP score 212.4 ± 29.4 dB/m in patients without steatosis ($P < 0.0001$) (Figure 1). Patients with steatosis were more likely than patients without steatosis to have type 2 diabetes (18.7% vs 7.5%, P

$= 0.04$), dyslipidemia (10.4% vs 5.7%, $P = 0.048$), higher body mass index (28.9 ± 6.6 kg/m² vs 26.1 ± 6.9 kg/m², $P = 0.049$), ALT (20.4 ± 16.5 U/L vs 15.3 ± 5.5 U/L, $P = 0.048$), fasting glucose (107.8 ± 30.5 mg/dL vs 96.5 ± 11.1 mg/dL, $P = 0.023$) and triglycerides (138.8 ± 77.9 mg/dL vs 109.7 ± 63.9 mg/dL, $P = 0.05$) (Table 2). None of the patients without steatosis had abnormal liver enzymes; only 6.25% of patients with steatosis had abnormal liver enzymes.

Changes in patients with and without steatosis between baseline and post-SVR:

Interestingly, patients with steatosis continued to have clinically significant liver stiffness (mean baseline 7.7 ± 1.7 kPa; post-SVR 7.0 ± 4.8 kPa; $P = 0.037$) while patients without steatosis did not (mean baseline 7.1 ± 2.1 ; post-SVR 5.3 ± 1.5 kPa; $P < 0.0001$) (Table 3). Among patients with post-SVR steatosis, 6.25% had advanced fibrosis defined as ≥ 11 kPa. No patients without steatosis had advanced fibrosis (Table 3).

Post-SVR, neither weight nor BMI changed while levels of transaminases and other liver enzymes dropped in patients both with and without steatosis, including ALT (55.6 ± 60.9 U/L to 15.3 ± 5.5 U/L in patients with steatosis, $P < 0.0001$, and 68.78 ± 52.8 U/L to 20.4 ± 16.5 U/L in patients without steatosis; $P < 0.0001$, respectively); AST (43.3 ± 35.6 U/L to 20.2 ± 5.4 U/L; $P < 0.0001$ and 61.3 ± 44.7 U/L to 22.9 ± 9.8 U/L; $P < 0.0001$, respectively); and alkaline phosphatase (78.5 ± 43.1 U/L to 70.8 ± 28.8 U/L; $P = 0.01$ and 75.5 ± 21.8 U/L to 71.3 ± 19.4 U/L; $P = 0.04$) (Table 3).

DISCUSSION

Since hepatic steatosis prevalence in CHC patients has previously been reported to be approximately 50%^[8] our findings of a 47.5% prevalence post-SVR achieved with DAAs should perhaps not be surprising. However, this very high prevalence with continuing

Table 1 Demographic and clinical characteristics of the chronic hepatitis C patients prior to direct-acting antivirals treatment and after achieving sustained virological response 12 *n* (%)

	Prior to DAA treatment (baseline)	Post-SVR 12	<i>P</i> ¹ value
Demographics			
Male	49 (48)	49 (48)	NS
Age (yr, mean ± SD)	60.3 ± 10.7	60.3 ± 10.7	NS
White	37 (37)	37 (37)	NS
Hispanic	26 (26)	26 (26)	NS
African American	13 (13)	13 (13)	NS
Asian	7 (7)	7 (7)	NS
Other	2 (2)	2 (2)	NS
Declined	16 (15)	16 (15)	NS
Clinical			
Hypertension	45 (43)	45 (43)	NS
Type 2 diabetes	13 (12.3)	13 (12.3)	NS
Dyslipidemia	8 (7.5)	8 (7.5)	NS
Anthropometric (mean ± SD)			
Body mass index (kg/m ²)	27.6 ± 6.9	27.5 ± 6.9	NS
Weight (Lbs.)	174.9 ± 46.9	172.7 ± 44.5	NS
Laboratory panel (mean ± SD)			
HCV vial load log ₁₀ IU/mL	6.2 ± 0.9	0.0 ± 0.0	< 0.0001
HCV genotype			
Genotype 1	86 (85)		
Genotype 2	15 (14)		
Genotype 4	1 (1)		
AST (U/L)	51.8 ± 41.1	21.5 ± 8.0	< 0.0001
ALT (U/L)	63.1 ± 62.6	17.8 ± 12.3	< 0.0001
Alkaline phosphatase (U/L)	77.5 ± 34.0	71.0 ± 24.3	0.004
Albumin (g/dL)	4.3 ± 0.4	4.4 ± 0.4	NS
Bilirubin, total (mg/dL)	0.6 ± 0.2	0.6 ± 0.3	NS
Fasting glucose (mg/dL)	99.1 ± 30.1	102.1 ± 23.5	NS
FibroScan (mean ± SD)			
Fibrosis Score (kPa)	7.4 ± 1.9	6.1 ± 3.6	0.013
IQR (%)	12.6 ± 4.9	12.3 ± 5.5	NS

¹*P* values (2-sided) determined from either a Fisher's exact test for categorical variables or *t*-test for continuous variables. DAA: Direct-acting antivirals; SVR: Sustained virological response; HCV: Hepatitis C virus; AST: Aspartate aminotransferase; ALT: Alanine aminotransferase; IQR: Interquartile range.

clinically significant fibrosis in the steatotic patients despite normal liver enzymes should be of concern to clinicians. The current European guidelines recommend assessing ALT and HCV RNA 48 wk post-treatment in non-cirrhotic patients with SVR, with no further follow up with normal ALT/undetectable HCV RNA^[18]. The current United States guidelines for patients post-SVR recommend follow up only for those with advanced fibrosis; assessing other liver disease causes is only recommended in cases of persistently abnormal transaminases^[19]. Importantly, we show that fatty liver may be present despite normal liver enzymes, confirming previous studies that have shown this^[20]. Therefore, we recommend post-SVR assessment of steatosis and fibrosis in those with abnormal BMI or other risk factors typical of NAFLD. In patients found to have hepatic steatosis long-term follow up is warranted.

To our knowledge this is the first prospective study to assess the prevalence of fatty liver in HCV patients who achieved an SVR with DAAs. We hope that our study will raise awareness of the post-SVR prevalence of fatty liver and the need for screening and long-term follow up. Our study's strengths include the community-based hepatology setting, which likely accurately represents real life experience. In addition,

we used TE, which is highly sensitive and specific, and is widely used and easy to perform. Although liver biopsy is still the gold standard to assess fatty liver and staging with MRI proton density fat fraction may be more accurate^[21], biopsy is invasive and costly and many patients are reluctant to undergo the procedure because of concerns about pain and, although limited, possible complications. With biopsy there is also the possibility of inter-and intra-observer variability and sampling error^[22]. MRI techniques are quite expensive. Neither of these is likely to be performed in post-SVR patients with normal liver enzymes. Thus, the use of TE with CAP is realistic in a real-world setting.

There is substantial data showing good sensitivity and specificity for the use of TE in determining either presence of advanced fibrosis or no fibrosis. In eight studies that compared the usefulness of TE and liver biopsy for assessment of liver fibrosis in NAFLD patients it was shown that TE is very good for diagnosis of $F \geq 3$, with 84%-100% sensitivity and 83%-97% specificity^[23-30]. Similar findings were reported in a recent large systematic review and meta-analysis that confirmed that TE was excellent for diagnosis of $F \geq 3$ in NAFLD patients^[31]. Although there is reduced accuracy using TE for distinguishing early fibrosis

Table 2 Characteristics of chronic hepatitis C patients after achieving sustained virological response 12 comparing those with and without steatosis *n* (%)

	Patients without steatosis (CAP < 248 dB/m) (<i>n</i> = 53)	Patients with steatosis (CAP ≥ 248 dB/m) (<i>n</i> = 48)	<i>P</i> ¹ value
Demographics			
Male	25 (47)	27 (56)	NS
Age (yr, mean ± SD)	59.4 ± 11.6	60.9 ± 9.4	NS
White	18 (34)	18 (38)	NS
Hispanic	14 (26)	12 (25)	NS
Clinical			
Hypertension	25 (47.2)	20 (41.7)	NS
Dyslipidemia	3 (5.7)	5 (10.4)	0.048
Type 2 diabetes	4 (7.5)	9 (18.7)	0.04
Anthropometric (mean ± SD)			
Body mass index (kg/m ²)	26.1 ± 6.9	28.9 ± 6.6	0.049
Weight (Lbs.)	161.0 ± 33.4	172.7 ± 44.5	0.005
Hepatology and viral hepatitis panel (mean ± SD)			
AST (U/L)	20.2 ± 5.4	22.9 ± 9.8	NS
ALT (U/L)	15.3 ± 5.5	20.4 ± 16.5	0.048
Alkaline phosphatase (U/L)	70.7 ± 28.2	71.3 ± 19.4	NS
Albumin (g/dL)	4.3 ± 0.2	4.5 ± 0.6	NS
Bilirubin, total (mg/dL)	0.6 ± 0.3	0.6 ± 0.2	NS
Other laboratory studies (mean ± SD)			
Total cholesterol (mg/dL)	184.8 ± 35.1	179 ± 37.2	NS
HDL cholesterol (mg/dL)	57.6 ± 18.6	50.8 ± 17.0	NS
LDL cholesterol (mg/dL)	102.6 ± 33.2	100.7 ± 31.5	NS
Triglycerides (mg/dL)	109.7 ± 63.9	138.9 ± 77.9	0.05
HbA1c (%)	5.7 ± 0.6	6.0 ± 0.9	NS
Fasting serum glucose (mg/dL)	96.5 ± 11.1	107.8 ± 30.5	0.023
FibroScan (mean ± SD)			
Fibrosis Score (kPa)	5.3 ± 1.6	7.0 ± 4.8	0.0013
CAP (dB/m)	212.4 ± 29.0	296.3 ± 37.4	< 0.0001
% of patient with fibrosis score of (≥ 7 kPa)	0%	6.25%	0.066

¹*P* values (2-sided) determined from either a Fisher's exact test for categorical variables or *t*-test for continuous variables. CAP: Controlled attenuation parameter; AST: Aspartate aminotransferase; ALT: Alanine aminotransferase; HDL: High density lipoprotein; LDL: Low density lipoprotein; CAP: Controlled attenuation parameter.

stages (F1-F2), in our study we were mainly comparing results in patients with and without advanced fibrosis. There is also substantial data showing good sensitivity and specificity of TE with CAP for assessing hepatic steatosis^[32]. Although cutoff values for defining steatosis with CAP have not been fully formalized, we chose the value that defined steatosis (≥ 248 dB/M) based on a very recent large (2735 patients) meta-analysis of studies containing histology-verified CAP data for grading of steatosis that determined optimal cut-offs for CAP^[15].

Although until relatively recently, obesity (BMI > 30 kg/m²) was associated with a reduced ability of TE to accurately determine fibrosis and steatosis, this problem has been largely addressed with the development of the obese-specific XL probe which we used in our study, confirmed in multiple studies to obtain reliable liver stiffness measurement in obese patients^[33-35]. Another strength of our study is our inclusion of a detailed metabolic profile and alcohol questionnaire, with other causes carefully ruled out. It has been suggested that post-SVR some patients might feel free to indulge in alcohol consumption, with a resulting increase in liver stiffness measurements. Importantly, we ruled out increased alcohol intake through both medical records

and use of the AUDIT-C at the time of the TE CAP assessment post-SVR.

Although our exclusion of HCV GNT3 patients means that our findings cannot be applied to the approximately 30.1% of HCV patients with this genotype^[36], the exclusion is a strength of the study in other ways. Steatosis has been shown to correlate with intrahepatic viral replication in GNT3, with resolution of steatosis seen after effective antiviral treatment, suggesting a direct steatogenic effect of GNT3 virus^[8]. In a study of patients treated with interferon, steatosis improvement post-SVR was seen in 91% of GNT3 patients vs 43% of patients with other genotypes (*P* < 0.04)^[37]. In a study that compared the effects of interferon treatment in GNT1 and GNT3 patients, hepatic steatosis did not change in GNT1 patients, regardless of the treatment response, while steatosis was significantly reduced in GNT3 patients who achieved an SVR (*P* < 0.001) but not in patients who did not^[38], again suggesting a direct steatogenic effect of GNT3 HCV. Thus, GNT3 patients represent a unique population in terms of steatosis that should be studied separately. Inclusion of these patients in our study could have substantially altered our findings regarding post-SVR steatosis, likely substantially reducing the prevalence due to steatosis reduction

Table 3 Comparison of pre-treatment *vs* post-sustained virological response characteristics in patients with and without post-sustained virological response steatosis

	Patients without steatosis <i>n</i> = 53			Patients with steatosis <i>n</i> = 48		
	Pretreatment	Post SVR	<i>P</i> value	Pretreatment	Post SVR	<i>P</i> value
Body mass index (kg/m ²)	25.5 ± 4.0	26.1 ± 6.9	NS	30.0 ± 8.5	29.0 ± 6.6	NS
Weight (Lbs.)	161.9 ± 32.6	161.0 ± 33.4	NS	187.3 ± 55.8	186.1 ± 51.3	NS
Laboratory panel (mean ± SD)						
HCV vial load log ₁₀ IU/mL	6.1 ± 1.0	0.0 ± 0.0	< 0.0001	6.3 ± 0.8	0.0 ± 0.0	< 0.0001
AST (U/L)	43.3 ± 35.6	20.2 ± 5.4	< 0.0001	61.3 ± 44.7	22.9 ± 9.8	< 0.0001
ALT (U/L)	55.6 ± 60.9	15.3 ± 5.5	< 0.0001	68.78 ± 52.8	20.4 ± 16.5	< 0.0001
Alkaline phosphatase (U/L)	78.5 ± 43.1	70.8 ± 28.8	0.01	75.5 ± 21.8	71.3 ± 19.4	0.04
Albumin (g/dL)	4.2 ± 0.5	4.4 ± 0.3	0.006	4.3 ± 0.2	4.5 ± 0.6	0.006
Bilirubin total (mg/dL)	0.6 ± 0.2	0.6 ± 0.3	NS	0.6 ± 0.3	0.6 ± 0.2	NS
Fasting glucose (mg/dL)	95.6 ± 31.9	96.6 ± 11.1	NS	103.0 ± 27.5	107.8 ± 30.5	NS
FibroScan (mean ± SD)						
Fibrosis score (kPa)	7.1 ± 2.1	5.3 ± 1.5	< 0.0001	7.7 ± 1.7	7.0 ± 4.8	0.0037

SVR: Sustained virological response; HCV: Hepatitis C virus; AST: Aspartate aminotransferase; ALT: Alanine aminotransferase.

in GNT3 patients, resulting in an overall steatosis prevalence which would not be representative of the almost 70% of HCV patients with other genotypes^[36].

A limitation of our study is that, because the CAP technology was not available in the United States at the time of study initiation, we were unable to estimate steatosis prevalence with CAP prior to the initiation of DAAs in order to determine treatment effect. However, regardless of baseline steatosis prevalence, there is real clinical value in assessing post-SVR prevalence so that appropriate long-term follow up can be recommended. Another limitation is the length of follow-up as the median time interval in our study is 47 wk between treatment completion and the post-SVR TE. Lengthier studies are definitely needed to assess NAFLD progression and steatosis and fibrosis changes over time in this population. However, by assessing patients at almost a year post-SVR we have at least provided a foundation upon which lengthier studies could expand. The sample size could be considered as a limitation; however, this is a proof of concept study that this is first of its kind and warrants larger studies. Finally, we excluded patients with cirrhosis. However, these patients are usually followed up closely post-SVR and steatosis has been found to be low when patients have advanced fibrosis^[39].

In conclusion, our findings that 47.5% of HCV patients had steatosis post-SVR and that some steatotic patients had clinically significant fibrosis, despite normal liver enzymes, highlight the importance of post-SVR assessment of steatosis and fibrosis in these patients. We believe these patients should be followed longitudinally, both to provide appropriate patient care and to advance our understanding of the long-term consequences of hepatic steatosis in post-SVR patients. In addition, we note that despite SVR these steatotic CHC patients are excluded from most NAFLD clinical trials, predominantly because of the current guidelines' definition of NAFLD as a diagnosis of exclusion^[40,41]. We propose revisiting this and implementing new definitions

of those with concomitant liver diseases, including those with HCV SVRs, that might allow patients' participation in trials, an unmet need in the rising epidemic of NAFLD.

ARTICLE HIGHLIGHTS

Research background

It is known that the hepatic steatosis prevalence in hepatitis C patients who have achieved a sustained virological response with interferon is approximately 50%. However, the prevalence of fatty liver in hepatitis C patients who have achieved a sustained virological response with direct-acting antivirals has not previously been studied. Knowledge of this is important in order to direct appropriate long-term follow up for patients.

Research motivation

Post-sustained virological response (SVR), hepatitis C patients, many of whom have normal liver enzymes, are too often being discharged from their hepatologists' care with no further plans for follow up. The current European and United States guidelines only recommend long-term follow up in patients with elevated enzymes. In addition, many hepatitis C patients who have achieved an SVR are excluded from nonalcoholic fatty liver disease (NAFLD) clinical trials. We think it is important to determine the prevalence of NAFLD post-SVR and assess the severity of liver disease in these patients. Determining these things can provide a basis for future research aimed at determining the long-term natural history of the disease in these patients, and may prompt changes in both liver society guidelines for follow up and in clinical trial exclusion criteria.

Research objectives

The main objective, to determine the prevalence of fatty liver in hepatitis C patients who have achieved a sustained virological response with direct-acting antivirals, was achieved. This knowledge provides a basis for future research aimed at determining the long-term natural history of the disease in these patients.

Research methods

In this study we used transient elastography with controlled attenuation parameter to measure steatosis and fibrosis in hepatitis C patients post-SVR. This was the first study to measure both fibrosis and steatosis in hepatitis C patients using the FibroScan technology.

Research results

Our findings have added knowledge previously unknown in this field that may help to guide the need for long-term monitoring of hepatitis C patients post-SVR, with a particular focus on the possible occurrence of NAFLD in these

patients, whether or not there are elevated liver enzymes. The most important future research will be to carry out long-term follow up on hepatitis C patients post-SVR to determine the prevalence of fatty liver over time.

Research conclusions

This is the first prospective study to assess the prevalence of fatty liver in hepatitis C patients who have achieved a sustained virological response with direct-acting antivirals. The study's findings that fatty liver is present in 47.5% of these patients and that some steatotic patients have clinically significant fibrosis despite normal liver enzymes should raise awareness of the high post-SVR prevalence of fatty liver and the importance of post-SVR assessment of steatosis and fibrosis and long-term follow up with these patients. The study's findings raise concern that the recommendations found in the current U.S. and European guidelines for follow up of patients post-SVR could result in a lack of adequate long-term monitoring of these patients. In particular, the very high prevalence of fatty liver (47.5%) with continuing clinically significant fibrosis in the steatotic patients despite normal liver enzymes should be of concern to clinicians. Therefore, we recommend post-SVR assessment of steatosis and fibrosis in those with abnormal BMI or other risk factors typical of NAFLD. In patients found to have hepatic steatosis long-term follow up is clearly warranted.

Research perspectives

Our study's assessment of steatosis and fibrosis in hepatitis C patients at almost a year post-SVR has shown that long-term monitoring of these patients to assess the possibility of fatty liver and fibrosis is important. With this study, we have provided a foundation upon which lengthier and larger studies should expand, using regularly scheduled transient elastography with controlled attenuation parameter assessments in order to determine whether this high level of steatosis is still present multiple years post-SVR and the clinical ramifications for patients.

REFERENCES

- 1 Younossi ZM, Koenig AB, Abdelatif D, Fazel Y, Henry L, Wymer M. Global epidemiology of nonalcoholic fatty liver disease-Meta-analytic assessment of prevalence, incidence, and outcomes. *Hepatology* 2016; **64**: 73-84 [PMID: 26707365 DOI: 10.1002/hep.28431]
- 2 World Health Organization. Global hepatitis report 2017. Geneva, Switzerland: World Health Organization, 2017: 83
- 3 Setiawan VW, Stram DO, Porcel J, Lu SC, Le Marchand L, Noureddin M. Prevalence of chronic liver disease and cirrhosis by underlying cause in understudied ethnic groups: The multiethnic cohort. *Hepatology* 2016; **64**: 1969-1977 [PMID: 27301913 DOI: 10.1002/hep.28677]
- 4 Wong RJ, Aguilar M, Cheung R, Perumpail RB, Harrison SA, Younossi ZM, Ahmed A. Nonalcoholic steatohepatitis is the second leading etiology of liver disease among adults awaiting liver transplantation in the United States. *Gastroenterology* 2015; **148**: 547-555 [PMID: 25461851 DOI: 10.1053/j.gastro.2014.11.039]
- 5 Vernon G, Baranova A, Younossi ZM. Systematic review: the epidemiology and natural history of non-alcoholic fatty liver disease and non-alcoholic steatohepatitis in adults. *Aliment Pharmacol Ther* 2011; **34**: 274-285 [PMID: 21623852 DOI: 10.1111/j.1365-2036.2011.04724.x]
- 6 Powell EE, Jonsson JR, Clouston AD. Steatosis: co-factor in other liver diseases. *Hepatology* 2005; **42**: 5-13 [PMID: 15962320 DOI: 10.1002/hep.20750]
- 7 Adinolfi LE, Gambardella M, Andreana A, Tripodi MF, Utili R, Ruggiero G. Steatosis accelerates the progression of liver damage of chronic hepatitis C patients and correlates with specific HCV genotype and visceral obesity. *Hepatology* 2001; **33**: 1358-1364 [PMID: 11391523 DOI: 10.1053/jhep.2001.24432]
- 8 Leonardo A, Adinolfi LE, Loria P, Carulli N, Ruggiero G, Day CP. Steatosis and hepatitis C virus: mechanisms and significance for hepatic and extrahepatic disease. *Gastroenterology* 2004; **126**: 586-597 [PMID: 14762795]
- 9 Castera L. Steatosis, insulin resistance and fibrosis progression in chronic hepatitis C. *Minerva Gastroenterol Dietol* 2006; **52**: 125-134 [PMID: 16557184]
- 10 Bondini S, Younossi ZM. Non-alcoholic fatty liver disease and hepatitis C infection. *Minerva Gastroenterol Dietol* 2006; **52**: 135-143 [PMID: 16557185]
- 11 Abenavoli L, Masarone M, Peta V, Milic N, Kobylak N, Rouabhia S, Persico M. Insulin resistance and liver steatosis in chronic hepatitis C infection genotype 3. *World J Gastroenterol* 2014; **20**: 15233-15240 [PMID: 25386071 DOI: 10.3748/wjg.v20.i41.15233]
- 12 Castera L, Fornis X, Alberti A. Non-invasive evaluation of liver fibrosis using transient elastography. *J Hepatol* 2008; **48**: 835-847 [PMID: 18334275 DOI: 10.1016/j.jhep.2008.02.008]
- 13 Han MA, Saouaf R, Ayoub W, Todo T, Mena E, Noureddin M. Magnetic resonance imaging and transient elastography in the management of Nonalcoholic Fatty Liver Disease (NAFLD). *Expert Rev Clin Pharmacol* 2017; **10**: 379-390 [PMID: 28277807 DOI: 10.1080/17512433.2017.1299573]
- 14 Rinella ME, Sanyal AJ. Management of NAFLD: a stage-based approach. *Nat Rev Gastroenterol Hepatol* 2016; **13**: 196-205 [PMID: 26907882 DOI: 10.1038/nrgastro.2016.3]
- 15 Karlas T, Petroff D, Sasso M, Fan JG, Mi YQ, de Lédinghen V, Kumar M, Lupsor-Platon M, Han KH, Cardoso AC, Ferraioli G, Chan WK, Wong VW, Myers RP, Chayama K, Friedrich-Rust M, Beaugrand M, Shen F, Hiriart JB, Sarin SK, Badea R, Jung KS, Marcellin P, Filice C, Mahadeva S, Wong GL, Crotty P, Masaki K, Bojunga J, Bedossa P, Keim V, Wiegand J. Individual patient data meta-analysis of controlled attenuation parameter (CAP) technology for assessing steatosis. *J Hepatol* 2017; **66**: 1022-1030 [PMID: 28039099 DOI: 10.1016/j.jhep.2016.12.022]
- 16 Park CC, Nguyen P, Hernandez C, Bettencourt R, Ramirez K, Fortney L, Hooker J, Sy E, Savides MT, Alkhoura MH, Valasek MA, Rizo E, Richards L, Brenner D, Sirlin CB, Loomba R. Magnetic Resonance Elastography vs Transient Elastography in Detection of Fibrosis and Noninvasive Measurement of Steatosis in Patients With Biopsy-Proven Nonalcoholic Fatty Liver Disease. *Gastroenterology* 2017; **152**: 598-607 [PMID: 27911262 DOI: 10.1053/j.gastro.2016.10.026]
- 17 Alkhoura N, Feldstein AE. Noninvasive diagnosis of nonalcoholic fatty liver disease: Are we there yet? *Metabolism* 2016; **65**: 1087-1095 [PMID: 26972222 DOI: 10.1016/j.metabol.2016.01.013]
- 18 European Association for the Study of the Liver. EASL recommendations on treatment of hepatitis C 2016. *J Hepatol* 2017; **66**: 153-194 [PMID: 27667367 DOI: 10.1016/j.jhep.2016.09.001]
- 19 American Association for the Study of Liver Diseases, Infectious Diseases Society of America. Summary of the recommendations for monitoring patients who are starting HCV treatment, are on treatment, or have completed therapy. Available from: URL: <https://www.hcvguidelines.org/evaluate/monitoring>
- 20 Browning JD, Szczepaniak LS, Dobbins R, Nuremberg P, Horton JD, Cohen JC, Grundy SM, Hobbs HH. Prevalence of hepatic steatosis in an urban population in the United States: impact of ethnicity. *Hepatology* 2004; **40**: 1387-1395 [PMID: 15565570 DOI: 10.1002/hep.20466]
- 21 Noureddin M, Khoyilar C, Palmer SL. MRI, CT scan, and ultrasound in the diagnosis of nonalcoholic fatty liver disease. *J Clin Gastroenterol* 2015; **49**: 351-352 [PMID: 25551206 DOI: 10.1097/MCG.0000000000000281]
- 22 Zeng DW, Dong J, Liu YR, Jiang JJ, Zhu YY. Noninvasive models for assessment of liver fibrosis in patients with chronic hepatitis B virus infection. *World J Gastroenterol* 2016; **22**: 6663-6672 [PMID: 27547009 DOI: 10.3748/wjg.v22.i29.6663]
- 23 Cassinotto C, Boursier J, de Lédinghen V, Lebigot J, Lapuyade B, Cales P, Hiriart JB, Michalak S, Bail BL, Cartier V, Mouries A, Oberti F, Fouchard-Hubert I, Vergnion J, Aubé C. Liver stiffness in nonalcoholic fatty liver disease: A comparison of supersonic shear imaging, FibroScan, and ARFI with liver biopsy. *Hepatology* 2016; **63**: 1817-1827 [PMID: 26659452 DOI: 10.1002/hep.28394]
- 24 Imajo K, Kessoku T, Honda Y, Tomeno W, Ogawa Y, Mawatari H, Fujita K, Yoneda M, Taguri M, Hyogo H, Sumida Y, Ono

- M, Eguchi Y, Inoue T, Yamanaka T, Wada K, Saito S, Nakajima A. Magnetic Resonance Imaging More Accurately Classifies Steatosis and Fibrosis in Patients With Nonalcoholic Fatty Liver Disease Than Transient Elastography. *Gastroenterology* 2016; **150**: 626-637 [PMID: 26677985 DOI: 10.1053/j.gastro.2015.11.048]
- 25 **Kumar R**, Rastogi A, Sharma MK, Bhatia V, Tyagi P, Sharma P, Garg H, Chandan Kumar KN, Bihari C, Sarin SK. Liver stiffness measurements in patients with different stages of nonalcoholic fatty liver disease: diagnostic performance and clinicopathological correlation. *Dig Dis Sci* 2013; **58**: 265-274 [PMID: 22790906 DOI: 10.1007/s10620-012-2306-1]
- 26 **Lupsor M**, Badea R, Stefanescu H, Grigorescu M, Serban A, Radu C, Crişan D, Sparchez Z, Iancu S, Maniu A. Performance of unidimensional transient elastography in staging non-alcoholic steatohepatitis. *J Gastrointest Liver Dis* 2010; **19**: 53-60 [PMID: 20361076]
- 27 **Pathik P**, Ravindra S, Ajay C, Prasad B, Jatin P, Prabha S. Fibroscan versus simple noninvasive screening tools in predicting fibrosis in high-risk nonalcoholic fatty liver disease patients from Western India. *Ann Gastroenterol* 2015; **28**: 281-286 [PMID: 25830783]
- 28 **Wong VW**, Vergniol J, Wong GL, Foucher J, Chan HL, Le Bail B, Choi PC, Koww M, Chan AW, Merrouche W, Sung JJ, de Lédinghen V. Diagnosis of fibrosis and cirrhosis using liver stiffness measurement in nonalcoholic fatty liver disease. *Hepatology* 2010; **51**: 454-462 [PMID: 20101745 DOI: 10.1002/hep.23312]
- 29 **Yoneda M**, Yoneda M, Fujita K, Inamori M, Tamano M, Hiriishi H, Nakajima A. Transient elastography in patients with non-alcoholic fatty liver disease (NAFLD). *Gut* 2007; **56**: 1330-1331 [PMID: 17470477 DOI: 10.1136/gut.2007.126417]
- 30 **Yoneda M**, Yoneda M, Mawatari H, Fujita K, Endo H, Iida H, Nozaki Y, Yonemitsu K, Higurashi T, Takahashi H, Kobayashi N, Kirikoshi H, Abe Y, Inamori M, Kubota K, Saito S, Tamano M, Hiraishi H, Maeyama S, Yamaguchi N, Togo S, Nakajima A. Noninvasive assessment of liver fibrosis by measurement of stiffness in patients with nonalcoholic fatty liver disease (NAFLD). *Dig Liver Dis* 2008; **40**: 371-378 [PMID: 18083083 DOI: 10.1016/j.dld.2007.10.019]
- 31 **Kwok R**, Tse YK, Wong GL, Ha Y, Lee AU, Ngu MC, Chan HL, Wong VW. Systematic review with meta-analysis: non-invasive assessment of non-alcoholic fatty liver disease--the role of transient elastography and plasma cytokeratin-18 fragments. *Aliment Pharmacol Ther* 2014; **39**: 254-269 [PMID: 24308774 DOI: 10.1111/apt.12569]
- 32 **Noureddin M**, Mato JM, Lu SC. Nonalcoholic fatty liver disease: update on pathogenesis, diagnosis, treatment and the role of S-adenosylmethionine. *Exp Biol Med* (Maywood) 2015; **240**: 809-820 [PMID: 25873078 DOI: 10.1177/1535370215579161]
- 33 **Mikolasevic I**, Orlic L, Franjic N, Hauser G, Stimac D, Milic S. Transient elastography (FibroScan®) with controlled attenuation parameter in the assessment of liver steatosis and fibrosis in patients with nonalcoholic fatty liver disease - Where do we stand? *World J Gastroenterol* 2016; **22**: 7236-7251 [PMID: 27621571 DOI: 10.3748/wjg.v22.i32.7236]
- 34 **Myers RP**, Pomier-Layrargues G, Kirsch R, Pollett A, Duarte-Rojo A, Wong D, Beaton M, Levstik M, Crotty P, Elkashab M. Feasibility and diagnostic performance of the FibroScan XL probe for liver stiffness measurement in overweight and obese patients. *Hepatology* 2012; **55**: 199-208 [PMID: 21898479 DOI: 10.1002/hep.24624]
- 35 **Sporea I**, Sirli R, Mare R, Popescu A, Ivascu SC. Feasibility of Transient Elastography with M and XL probes in real life. *Med Ultrason* 2016; **18**: 7-10 [PMID: 26962547 DOI: 10.11152/mu.2013.2066.181.xsi]
- 36 **Messina JP**, Humphreys I, Flaxman A, Brown A, Cooke GS, Pybus OG, Barnes E. Global distribution and prevalence of hepatitis C virus genotypes. *Hepatology* 2015; **61**: 77-87 [PMID: 25069599 DOI: 10.1002/hep.27259]
- 37 **Castéra L**, Hézode C, Roudot-Thoraval F, Lonjon I, Zafrani ES, Pawlotsky JM, Dhumeaux D. Effect of antiviral treatment on evolution of liver steatosis in patients with chronic hepatitis C: indirect evidence of a role of hepatitis C virus genotype 3 in steatosis. *Gut* 2004; **53**: 420-424 [PMID: 14960527]
- 38 **Kumar D**, Farrell GC, Fung C, George J. Hepatitis C virus genotype 3 is cytopathic to hepatocytes: Reversal of hepatic steatosis after sustained therapeutic response. *Hepatology* 2002; **36**: 1266-1272 [PMID: 12395339 DOI: 10.1053/jhep.2002.36370]
- 39 **Permutt Z**, Le TA, Peterson MR, Seki E, Brenner DA, Sirlin C, Loomba R. Correlation between liver histology and novel magnetic resonance imaging in adult patients with non-alcoholic fatty liver disease - MRI accurately quantifies hepatic steatosis in NAFLD. *Aliment Pharmacol Ther* 2012; **36**: 22-29 [PMID: 22554256 DOI: 10.1111/j.1365-2036.2012.05121.x]
- 40 **Chalasani N**, Younossi Z, Lavine JE, Diehl AM, Brunt EM, Cusi K, Charlton M, Sanyal AJ; American Gastroenterological Association; American Association for the Study of Liver Diseases; American College of Gastroenterology. The diagnosis and management of non-alcoholic fatty liver disease: practice guideline by the American Gastroenterological Association, American Association for the Study of Liver Diseases, and American College of Gastroenterology. *Gastroenterology* 2012; **142**: 1592-1609 [PMID: 22656328 DOI: 10.1053/j.gastro.2012.04.001]
- 41 **European Association for the Study of the Liver (EASL)**, European Association for the Study of Diabetes (EASD), European Association for the Study of Obesity (EASO). EASL-EASD-EASO Clinical Practice Guidelines for the management of non-alcoholic fatty liver disease. *J Hepatol* 2016; **64**: 1388-1402 [PMID: 27062661 DOI: 10.1016/j.jhep.2015.11.004]

P- Reviewer: Abenavoli L, Ho SB, Rodriguez-Frias F

S- Editor: Wang XJ **L- Editor:** A **E- Editor:** Huang Y





Published by **Baishideng Publishing Group Inc**
7901 Stoneridge Drive, Suite 501, Pleasanton, CA 94588, USA
Telephone: +1-925-223-8242
Fax: +1-925-223-8243
E-mail: bpgoffice@wjgnet.com
Help Desk: <http://www.f6publishing.com/helpdesk>
<http://www.wjgnet.com>



ISSN 1007-9327

