



55490-Review-check.docx

Quotes Included  
Bibliography Included

9%  
SIMILAR

**Name of Journal:** *World Journal of Diabetes*

**Manuscript NO:** 55490

**Manuscript Type:** REVIEW

**Range of adiposity and cardiorenal syndrome**

Pazos F *et al.* Obesity and cardiorenal syndrome

Fernando Pazos

# Abstract

Obesity and obesity-related co-morbidities, diabetes mellitus, and hypertension are among the fastest-growing risk factors of heart failure and kidney disease worldwide. Obesity, which is not a unitary concept, nor it is a static process, ranges from alterations in distribution to the amount of adiposity. Visceral adiposity, which includes intraabdominal visceral fat mass and ectopic fat deposition such as hepatic, cardiac, or renal, was robustly associated with greater risk for cardiorenal morbidity than subcutaneous adiposity. In addition, Morbid obesity also has a demonstrated negative effect on cardiac and renal functioning. The mechanisms by which adipose tissue links with the cardiorenal syndrome are hemodynamic and mechanical changes, as well neurohumoral pathways such as insulin resistance, endothelial dysfunction, nitric oxide bioavailability, renin-angiotensin-aldosterone, oxidative

## Match Overview

1	<b>Internet</b> 101 words crawled on 28-May-2020 <a href="http://www.nature.com">www.nature.com</a>	1%
2	<b>Crossref</b> 62 words <a href="#">Amanda R. Vest, Michael Chan, Anita Deswal, Michael M . Givertz et al. "Nutrition, Obesity, and Cachexia in Patien</a>	1%
3	<b>Internet</b> 58 words crawled on 02-Apr-2018 <a href="http://www.ncbi.nlm.nih.gov">www.ncbi.nlm.nih.gov</a>	1%
4	<b>Internet</b> 51 words crawled on 20-May-2020 <a href="http://link.springer.com">link.springer.com</a>	<1%
5	<b>Internet</b> 46 words crawled on 28-Nov-2018 <a href="http://jhu.pure.elsevier.com">jhu.pure.elsevier.com</a>	<1%
6	<b>Crossref</b> 42 words <a href="#">Ilaria Figliuzzi, Vivianne Presta, Francesca Miceli, Barbara Citoni et al. "24-Hour ambulatory blood pressure levels a</a>	<1%
7	<b>Internet</b> 38 words crawled on 14-Dec-2010 <a href="http://lib.bioinfo.pl">lib.bioinfo.pl</a>	<1%
8	<b>Internet</b> 36 words crawled on 05-May-2020 <a href="http://www.mis.dc.nihr.ac.uk">www.mis.dc.nihr.ac.uk</a>	<1%



## Any time

Since 2020

Since 2019

Since 2016

Custom range...

## Sort by relevance

Sort by date

☒ include patents

☐ include citations

☐ Create alert

## Obesity, diabetes, the cardiorenal syndrome, and risk for cancer

[\[HTML\] karger.com](#)

V Forte, A Pandey, R Abdelmessih, G Forte... - **Cardiorenal** ..., 2012 - karger.com

... Prospective Studies Collaboration analysis [15], in individuals within the upper BMI **range** (25–50 ... The strong association between abdominal **adiposity** and insulin resistance supports weight loss as a ... Clinical Excellence (NICE) as a treatment option for adults with **obesity** if all of ...

☆ Cited by 59 [Related articles](#) [All 12 versions](#)

## Obesity-related cardiorenal disease: the benefits of bariatric surgery

[\[PDF\] researchgate.net](#)

W Fenske, T Athanasiou, L Harling... - **Nature Reviews** ..., 2013 - nature.com

... this risk 93-fold.16 Despite the strong association between excess body **adiposity** and T2DM ... 37 Diabetic cardiomyopathy is typically charac- terized by increased preload and afterload **values**, due to ... also in those with uric acid levels in the normal to high-normal **range**.128–130 ...

☆ Cited by 31 [Related articles](#) [All 11 versions](#)

## [\[HTML\] Childhood-adolescent obesity in the cardiorenal syndrome: lessons from animal models](#)

[\[HTML\] karger.com](#)

MR Hayden, JR Sowers - **Cardiorenal** medicine, 2011 - karger.com

... and oxidative stress associated with overweight and **obesity** states represent a nexus between components of the **cardiorenal** metabolic **syndrome** (CRS), namely ... Central **obesity** is a pivotal component of the CRS and predisposes to the early renal abnormalities that ...

☆ Cited by 8 [Related articles](#) [All 9 versions](#)

## Cardiorenal syndrome type 1: pathophysiological crosstalk leading to combined heart and kidney dysfunction in the setting of acutely decompensated heart failure

[\[HTML\] sciencedirect.com](#)

C Ronco, M Ciccoira, PA McCullough - **Journal of the American** ..., 2012 - onlinejacc.org

☆ Cited by 310 [Related articles](#) [All 12 versions](#)

## [\[HTML\] Vascular stiffness in insulin resistance and obesity](#)

[\[HTML\] frontiersin.org](#)

G Jia, AR Aroor, VG DeMarco... - **Frontiers in** ..., 2015 - frontiersin.org

... Typical **values** of PWV in the aorta **range** from approximately 5 m/s to >15 m/s (Luft, 2012) ... as an indication of increased vascular stiffness in the 2007 ESH/ESC hypertension guidelines based



[ALL](#) [IMAGES](#) [VIDEOS](#) [MAPS](#) [NEWS](#) [SHOPPING](#)

79,100 Results

Any time ▾

## The CardioRenal Metabolic Syndrome

<https://www.ncbi.nlm.nih.gov/pmc/articles/PMC4170524>

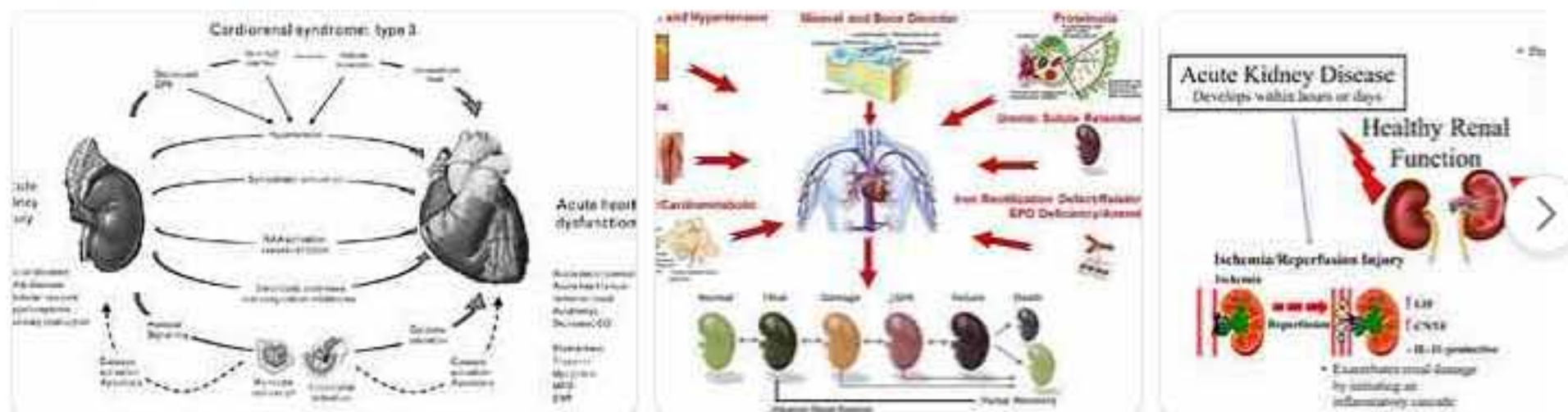
The inter-relationship between **adiposity** and maladaptive changes in the heart and kidneys in the CardioRenal Metabolic **Syndrome** (CRS). GFR, glomerular filtration rate; Na<sup>+</sup>, sodium; NO, nitric oxide; RAAS, renin-angiotensin-aldosterone system. Adapted...

Cited by: 7

Author: Adam Whaley-Connell, James R. Sowers

Publish Year: 2014

## Images of Range of Adiposity and Cardiorenal syndrome

<bing.com/images>[See more images of Range of Adiposity and Cardiorenal syndrome](#)

## Obesity, Diabetes, the Cardiorenal Syndrome, and Risk for ...

<https://www.ncbi.nlm.nih.gov/pmc/articles/PMC3376338>

Of the many health conditions associated with obesity, the cardiorenal metabolic syndrome (CRS) sequelae, including cardiovascular and kidney disease, are among the most prevalent ones. When compared to individuals who have a normal BMI, the **10-year** risk of developing diabetes increases approximately **20-fold** in persons with a BMI  $\geq 35$  [ 14 ].

Cited by: 55

Author: Victoria Forte, Abhishek Pandey, Rita Abd...

Publish Year: 2012

## Cardiorenal Syndrome: Classification, Pathophysiology ...

## Cardiorenal syndrome

Umbrella Term

Cardiorenal syndrome is an umbrella term used in the medical field that defines disorders of the heart and kidneys whereby "acute or chronic dysfunction in one organ may induce acute or chronic dysfunction of the other". The heart and the kidneys are involved in maintaining hemodynamic stability and organ perfusion through an intricate network. These two organs communicate with one another through a variety of pathways in an interdependent relationship. In a 2004 report from National Heart, Lung and Blood Institute, CRS was defined as a condition where treatment of congestive heart failure is limited by decline in kidney function. This definition has since been challenged repeatedly but there still remains little consensus over a universally accepted definition for CRS. At a consensus conference of the Acute Dialysis Quality Initiative, the CRS was classified into five subtypes primarily based upon the organ that initiated the insult as well as the acuity of disease.

Wikipedia

## People also search for

[Hepatorenal syndrome](#)[Acute Kidney Injury](#)[Pyelonephritis](#)[Heart Failure](#)[Turner Syndrome](#)[See more ▾](#)

Data from: Wikipedia