

Name of Journal: *World Journal of Clinical Pediatrics*

Manuscript NO: 56625

Manuscript Type: ORIGINAL ARTICLE

Retrospective Cohort Study

Gastroesophageal reflux disease in pediatric esophageal atresia: Assessment of clinical symptoms and pH-impedance data

Aksionchyk M *et al.* GERD in EA children

Marina Aksionchyk, Kirill Marakhouski, Aliaksandr Svirsky

Abstract

BACKGROUND

Esophageal atresia (EA) is the most common congenital anomaly of the gastrointestinal tract. Gastroesophageal reflux disease (GERD) is a frequent and lifelong problem in these patients. GERD can be asymptomatic and the incidence of esophageal gastric and intestinal metaplasia (Barrett's esophagus) is increased in adults with EA compared with the general population. Timely and accurate diagnosis of GERD is important to

Match Overview

1	Internet 260 words crawled on 13-Jul-2020 journals.lww.com	4%
2	Internet 139 words crawled on 05-Mar-2019 keks.org	2%
3	Internet 92 words crawled on 19-Aug-2018 www.thieme-connect.de	1%
4	Internet 46 words crawled on 08-May-2019 f6publishing.blob.core.windows.net	1%
5	Crossref 41 words Barbara Iwańczak, Agnieszka Kosmowska-Miśków, Anna K ofla-Dłubacz, Mateusz Palczewski et al. "Assessment of Cli	1%
6	Crossref 38 words "Gastroesophageal Reflux in Children", Springer Science and Business Media LLC, 2017	1%
7	Internet 33 words crawled on 30-Dec-2016 thieme-connect.com	1%



Gastroesophageal reflux disease in pediatric esophageal atresia: as



Sign i

ALL

IMAGES

VIDEOS

Add the Give with Bing

11,800 Results

Any time ▾

[Assessment and Management of Gastroesophageal Reflux in ...](#)

<https://www.healio.com/pediatrics/journals/pedann...> ▾

Gastroesophageal reflux disease (GERD) is pathologic reflux associated with **poor weight gain, irritability, dysphagia** and **often requires evaluation and treatment**. No gold-standard testing for GERD...

Author: Shilpi Chabra, Eric S. Peeples Publish Year: 2020

[Evaluation of Gastroesophageal Reflux in Children Born ...](#)

<https://www.ncbi.nlm.nih.gov/pmc/articles/PMC6855319>

The aim of the study was to evaluate acid and nonacid **gastroesophageal reflux** in infants and school-aged **children** with **esophageal atresia** (EA) using **pH-impedance** (pH-MII) monitoring. Methods: Between 2012 and 2017, all 24-hour pH-MII studies performed in infants (≤ 18 months) and 8 ...

Cited by: 1 Author: Floor W.T. Vergouwe, Michiel P. van Wijk, M...

Publish Year: 2019

[Pediatric Gastroesophageal Reflux Disease \(GERD ...](#)

<https://childrensnational.org/.../gastroesophageal-reflux-disease-gerd> ▾

Esophageal manometric study. A test that helps determine the strength of the muscles in the **esophagus**. It is useful in evaluating **gastroesophageal reflux** and swallowing abnormalities. A small tube is guided into the nostril, then passed into the throat, and finally into the **esophagus**. The pressure the **esophageal** muscles produce is then measured.

Gastroesophageal Reflux Disease

Medical Condition



A chronic digestive disease where the liquid content of the stomach refluxes into the esophagus.

Very common (More than 3 million cases per year in US)

Rarely requires lab test or imaging



Gastroesophageal reflux disease in pediatric esophageal atresia: As



ALL IMAGES VIDEOS MAPS NEWS SHOPPING

15,400 Results Any time ▾

Pediatric Gastroesophageal Reflux Disease (GERD ...

<https://childrensnational.org/.../gastroesophageal-reflux-disease-gerd> ▾

Esophageal manometric study. A test that helps determine the strength of the muscles in the **esophagus**. It is useful in evaluating **gastroesophageal reflux** and swallowing abnormalities. A small tube is guided into the nostril, then passed into the throat, and finally into the **esophagus**. The pressure the **esophageal** muscles produce is then measured.

Assessment and Management of Gastroesophageal Reflux in ...

<https://www.healio.com/pediatrics/journals/pedann...> ▾

Gastroesophageal reflux disease (GERD) is pathologic reflux associated with **poor weight gain**, **irritability**, **dysphagia** and **often requires evaluation and treatment**. No ...

Author: Shilpi Chabra, Eric S. Peeples **Publish Year:** 2020

Evaluation of Gastroesophageal Reflux in Children Born ...

<https://www.ncbi.nlm.nih.gov/pmc/articles/PMC6855319>

The aim of the study was to evaluate acid and nonacid **gastroesophageal reflux** in infants and school-aged **children** with **esophageal atresia** (EA) using **pH-impedance** (pH-MII) monitoring. Methods: Between 2012 and 2017, all 24-hour pH-MII studies performed in infants (≤ 18 months) and 8-year olds with EA were included.

Cited by: 1 **Author:** Floor W.T. Vergouwe, Michiel P. van Wijk,...

Publish Year: 2019

PEOPLE ALSO ASK

What is gastroesophageal reflux disease? ▾

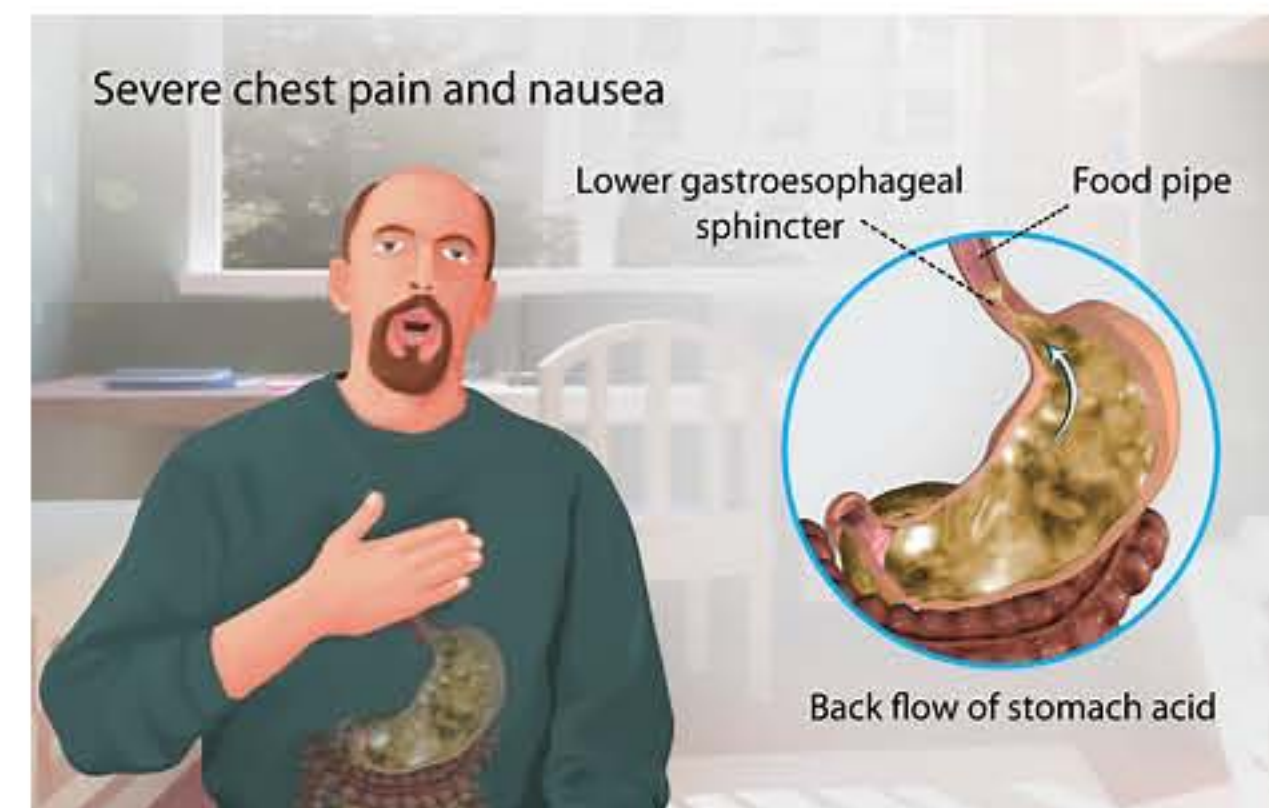
What are the clinical features of Gerd? ▾

What are the complications of GERD in infants? ▾

What are the pharmacotherapeutic agents for pediatric Gerd? ▾

Gastroesophageal Reflux Disease

Medical Condition



A chronic digestive disease where the liquid content of the stomach refluxes into the esophagus.

Very common (More than 3 million cases per year in US)

Rarely requires lab test or imaging

Treatment from medical professional advised

Can last several months

When the esophageal sphincter relaxes abnormally or weakens, stomach acid can flow back up into your esophagus, causing frequent heartburn. Common symptoms are a burning sensation in chest and difficulty swallowing and sensation of a lump in the throat. Generally the treatment begins with over-the-counter medication to control the stomach acid. If the pain prolongs for few weeks, the doctors prescribe other treatments which may include medication and/or surgery.

Symptoms