

Figure S1 Organ biodistribution of DiR/CFSE-labeled SHED cells after systemic administration. A: Representative ex vivo images of excised organs at 1, 3, 7d post-injection. B: Frozen Sections of liver and spleen at 1, 3, 7d post-injection. C: Frozen Sections of lung, kidney and heart. Scale = 100 μ M.

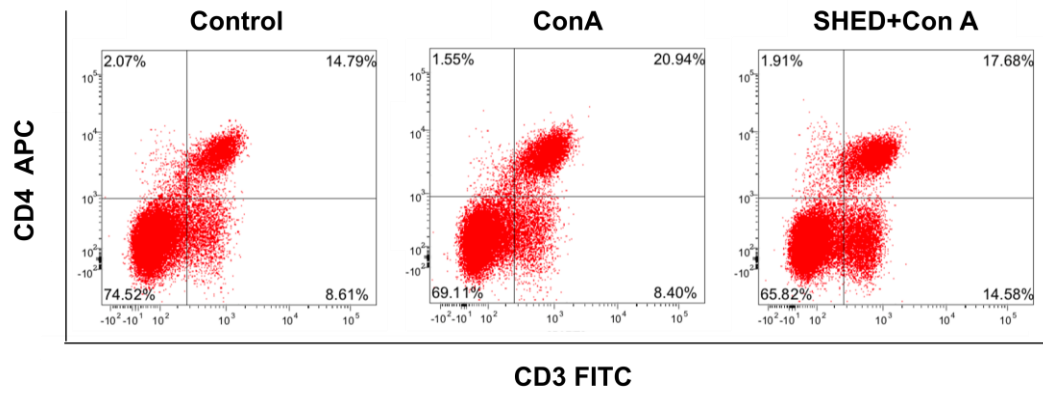


Figure S2 The content of CD3+ and CD4+ cells in the whole blood were detected by flow cytometry.

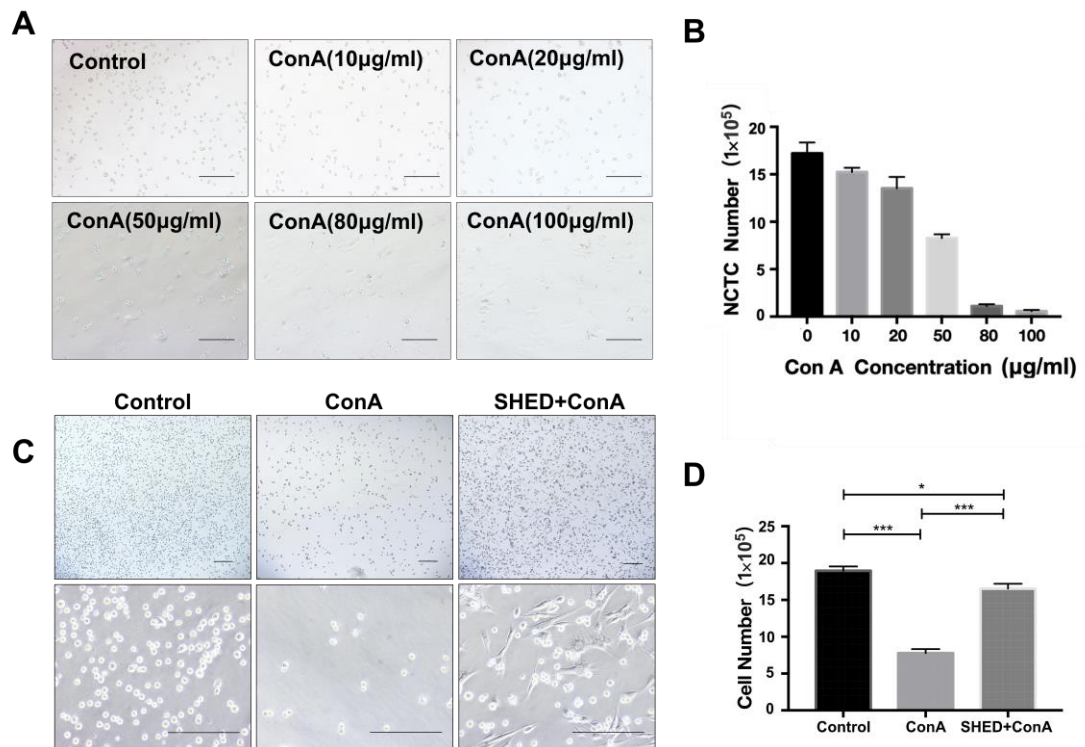


Figure S3 NCTC-1469 liver cell number.

A: NCTC cells were cultivated with Con A of different concentrations(0、10、20、50、80、100µg/ml). B:Quantitative analysis showed NCTC-1469 liver cell number of different concentrations. C:NCTC-1469 liver cell number in three group, counting round cells. D: Quantitative analysis showed NCTC-1469 liver cell number. Scale = 100 µ M, * * *, P < 0.001, * *, P < 0.01, *, P < 0.05, ns showed no statistical difference (mean ± SD),n ≥ 3.

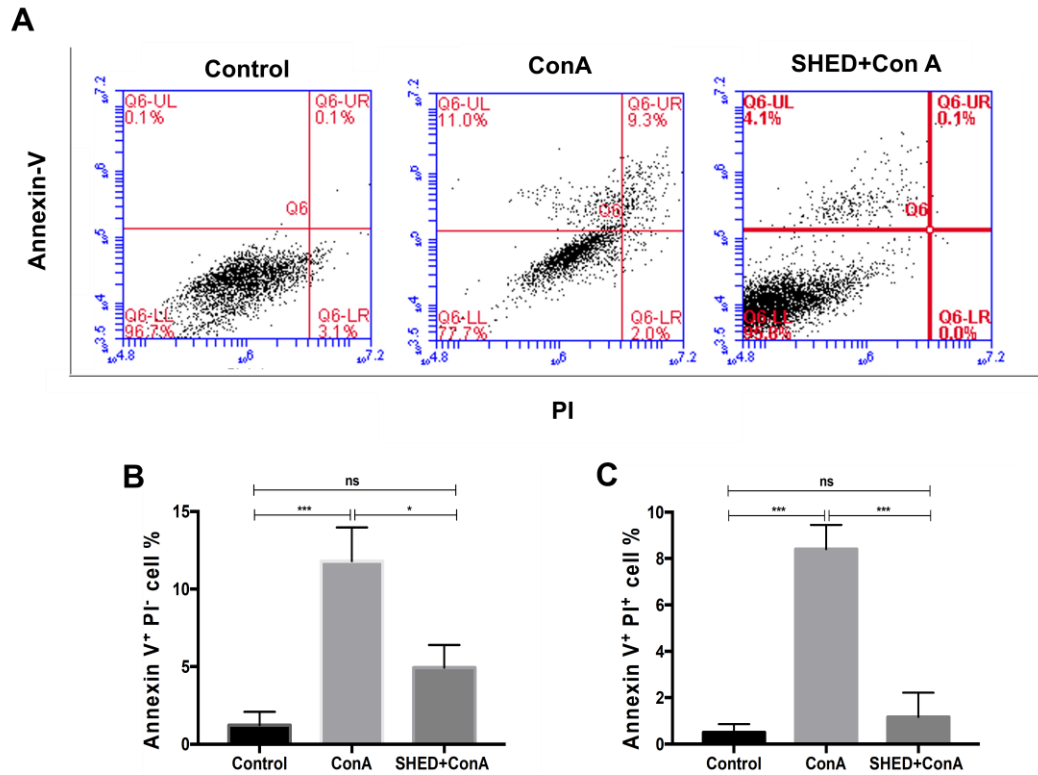


Figure S4 SHED cells cocultured 7 day before the ConA treatment

A: NCTC cell apoptosis detected by flow cytometry B Quantitative analysis of Annexin V⁺PI⁻ rate; G: Quantitative analysis of Annexin V⁺PI⁺ rate. Scale = 100 μ M, * * *, P < 0.001, * *, P < 0.01, *, P < 0.05, ns showed no statistical difference (mean \pm SD), n \geq 3.