

World Journal of *Radiology*

World J Radiol 2020 September 28; 12(9): 195-212



MINIREVIEWS

- 195** Review of X-ray and computed tomography scan findings with a promising role of point of care ultrasound in COVID-19 pandemic

Gandhi D, Ahuja K, Grover H, Sharma P, Solanki S, Gupta N, Patel L

ORIGINAL ARTICLE**Clinical Trials Study**

- 204** Application of voxel-based morphometric method to detect brain changes in children with non-cyanotic congenital heart disease

Jia X, Ma XH, Liang JW

ABOUT COVER

Associate Editor of *World Journal of Radiology*, Mina S Makary MD is an Assistant Professor of Radiology, Director of Scholarly Activity and Research, and a practicing Vascular and Interventional Radiologist with special interests in interventional oncology, complex hepatobiliary care, venous disease, women's health, and diagnostic imaging. Originally from Columbus, Ohio (United States), he obtained his MD and completed his interventional and diagnostic radiology training at The Ohio State University Wexner Medical Center, serving as Chief Resident. He has authored over 80 manuscripts and abstracts, and is an active member and leader in the American College of Radiology (ACR) and the Society of Interventional Radiology (SIR). He is passionate about academics and research, quality improvement and technology, and leadership and service. (L-Editor: Filipodia)

AIMS AND SCOPE

The primary aim of *World Journal of Radiology* (WJR, *World J Radiol*) is to provide scholars and readers from various fields of radiology with a platform to publish high-quality basic and clinical research articles and communicate their research findings online.

WJR mainly publishes articles reporting research results and findings obtained in the field of radiology and covering a wide range of topics including state of the art information on cardiopulmonary imaging, gastrointestinal imaging, genitourinary imaging, musculoskeletal imaging, neuroradiology/head and neck imaging, nuclear medicine and molecular imaging, pediatric imaging, vascular and interventional radiology, and women's imaging.

INDEXING/ABSTRACTING

The WJR is now abstracted and indexed in Emerging Sources Citation Index (Web of Science), PubMed, PubMed Central, China National Knowledge Infrastructure (CNKI), China Science and Technology Journal Database (CSTJ), and Superstar Journals Database.

RESPONSIBLE EDITORS FOR THIS ISSUE

Production Editor: Ji-Hong Liu; Production Department Director: Yun-Xiaoqian Wu; Editorial Office Director: Jia-Ping Yan.

NAME OF JOURNAL

World Journal of Radiology

ISSN

ISSN 1949-8470 (online)

LAUNCH DATE

January 31, 2009

FREQUENCY

Monthly

EDITORS-IN-CHIEF

Venkatesh Mani

EDITORIAL BOARD MEMBERS

<https://www.wjgnet.com/1949-8470/editorialboard.htm>

PUBLICATION DATE

September 28, 2020

COPYRIGHT

© 2020 Baishideng Publishing Group Inc

INSTRUCTIONS TO AUTHORS

<https://www.wjgnet.com/bpg/gerinfo/204>

GUIDELINES FOR ETHICS DOCUMENTS

<https://www.wjgnet.com/bpg/GerInfo/287>

GUIDELINES FOR NON-NATIVE SPEAKERS OF ENGLISH

<https://www.wjgnet.com/bpg/gerinfo/240>

PUBLICATION ETHICS

<https://www.wjgnet.com/bpg/GerInfo/288>

PUBLICATION MISCONDUCT

<https://www.wjgnet.com/bpg/gerinfo/208>

ARTICLE PROCESSING CHARGE

<https://www.wjgnet.com/bpg/gerinfo/242>

STEPS FOR SUBMITTING MANUSCRIPTS

<https://www.wjgnet.com/bpg/GerInfo/239>

ONLINE SUBMISSION

<https://www.f6publishing.com>

Review of X-ray and computed tomography scan findings with a promising role of point of care ultrasound in COVID-19 pandemic

Darshan Gandhi, Kriti Ahuja, Hemal Grover, Pranav Sharma, Shantanu Solanki, Nishant Gupta, Love Patel

ORCID number: Darshan Gandhi 0000-0002-7079-450X; Kriti Ahuja 0000-0001-6878-919X; Hemal Grover 0000-0003-4231-9709; Pranav Sharma 0000-0002-5141-7805; Shantanu Solanki 0000-0001-9563-2470; Nishant Gupta 0000-0003-0611-5733; Love Patel 0000-0002-6271-6376.

Author contributions: Gandhi D acknowledges the idea of this article and contributed to writing the manuscript substantially; Ahuja K contributed to the discussion of the manuscript; Grover H, Sharma P, and Solanki S contributed figures and figure editing in the manuscript; Gupta N contributed to the reference numbering and revision of the manuscript; Patel L contributed to the design and revision of the manuscript.

Conflict-of-interest statement: The authors declare that they have no competing or conflicting interests.

Open-Access: This article is an open-access article that was selected by an in-house editor and fully peer-reviewed by external reviewers. It is distributed in accordance with the Creative Commons Attribution NonCommercial (CC BY-NC 4.0) license, which permits others to distribute, remix, adapt, build upon this work non-commercially, and license their derivative works

Darshan Gandhi, Department of Radiology, Northwestern Memorial Hospital, Chicago, IL 60611, United States

Kriti Ahuja, Department of Internal Medicine, John H Stroger Jr. Hospital of Cook County, Chicago, IL 60612, United States

Hemal Grover, Department of Diagnostic Radiology, Icahn School of Medicine at Mount Sinai West, New York, NY 10029, United States

Pranav Sharma, Department of Diagnostic Radiology, Vascular and Interventional Radiology, University of Minnesota Medical Center, Minneapolis, MN 55455, United States

Shantanu Solanki, Department of Internal Medicine, Guthrie Robert Packer Hospital, Sayre, PA 18840, United States

Nishant Gupta, Department of Radiology, Bassett Healthcare, Cooperstown, NY 13326, United States

Love Patel, Division of Hospital Medicine, Abbott Northwestern Hospital, Allina Health, Minneapolis, MN 55407, United States

Corresponding author: Darshan Gandhi, MD, Academic Fellow, Doctor, Department of Radiology, Northwestern Memorial Hospital, Northwestern University Feinberg School of Medicine, 676 N St. Clair St, Suite 800, Chicago, IL 60611, United States.
darshangandhi7@gmail.com

Abstract

As healthcare professionals continue to combat the coronavirus disease 2019 (COVID-19) infection worldwide, there is an increasing interest in the role of imaging and the relevance of various modalities. Since imaging not only helps assess the disease at the time of diagnosis but also aids evaluation of response to management, it is critical to examine the role of different modalities currently in use, such as baseline X-rays and computed tomography scans carefully. In this article, we will draw attention to the critical findings for the radiologist. Further, we will look at point of care ultrasound, an increasingly a popular tool in diagnostic medicine, as a component of COVID-19 management.

Key Words: X-ray; Computed tomography; Point of care ultrasound; COVID-19; Coronavirus; Wuhan

on different terms, provided the original work is properly cited and the use is non-commercial. See: <http://creativecommons.org/licenses/by-nc/4.0/>

Manuscript source: Invited manuscript

Received: June 24, 2020

Peer-review started: June 24, 2020

First decision: July 30, 2020

Revised: August 22, 2020

Accepted: September 25, 2020

Article in press: September 25, 2020

Published online: September 28, 2020

P-Reviewer: Chen P, Zhang HW

S-Editor: Liu JH

L-Editor: A

P-Editor: Liu JH



©The Author(s) 2020. Published by Baishideng Publishing Group Inc. All rights reserved.

Core Tip: As the current coronavirus disease 2019 pandemic continues to spread and burden the healthcare system all over the world, we must explore all the resources at our disposal to give our patients the best care possible. While laboratory tests and computed tomography imaging are sensitive methods for diagnosis, the increasing burden of disease requires us to effectively utilize bedside ultrasonography to care for more people in a quick and judicious manner. Further, we must continuously look for ways to improve our efficiency while preventing spread of infection within the hospital.

Citation: Gandhi D, Ahuja K, Grover H, Sharma P, Solanki S, Gupta N, Patel L. Review of X-ray and computed tomography scan findings with a promising role of point of care ultrasound in COVID-19 pandemic. *World J Radiol* 2020; 12(9): 195-203

URL: <https://www.wjgnet.com/1949-8470/full/v12/i9/195.htm>

DOI: <https://dx.doi.org/10.4329/wjrr.v12.i9.195>

INTRODUCTION

Diagnostic radiology is an integral component in assessing the initial extent and severity of several diseases, including the current coronavirus disease 2019 (COVID-19) infection, and directs the management as well^[1]. Further, it provides a baseline with which to track changes, including progression and subsequent resolution of disease^[1,2]. In the COVID-19 pandemic, with the high level of infectivity of this virus, and an early non-specific or even asymptomatic phase, imaging may play a crucial role in early diagnosis, timely treatment, as well as a follow-up^[1,2]. While the role of imaging is helpful in assessing the phase and severity of the disease, as well as demonstrating resolution, its importance in early detection is debatable^[3,4]. On one hand, Ai *et al*^[3] studied 1014 patients in Wuhan, China and concluded that the high sensitivity of chest computed tomography (CT) imaging in detecting COVID-19 infection might make it a suitable tool for screening purposes. They advise that a high pre-test probability would further increase the suitability of this modality^[3]. On the other hand, Yang *et al*^[4] draw attention to the evidence demonstrating the possibility of confirmed COVID-19 infection with no significant chest CT findings. Further, chest CT findings, previously considered a part of the diagnostic criteria, have been removed in later guidelines^[4]. At present, with the large number of people affected, the burden on healthcare imaging facilities is immense, generating interest in simpler, faster, and less expensive methods of diagnosis, such as ultrasonography^[5,6]. With Point of care ultrasound becoming increasingly essential to modern medicine, the possibilities of using it as a reliable, safe, and quick diagnostic tool are being explored^[6]. A study demonstrated a strong positive correlation between the findings on ultrasound and CT scans of twelve COVID-19 patients^[5]. With the advantage of portability and lower expense as compared to Computed tomography, the ultrasound definitely seems like an avenue worth exploring^[7].

CHEST RADIOGRAPHY

Chest radiography is not advisable for first line use for detection of COVID-19 infection due to a reduced ability to demonstrate ground-glass opacities, an early finding in this disease (Figure 1)^[1]. As the disease progresses, however, extensive consolidation may develop, which may be seen on chest radiographs as well and thus helpful to assess the disease progression or resolution during management (Figure 2)^[1]. Recently, however, Cellina *et al*^[8] retrospectively studied the initial chest radiographs of 246 confirmed COVID-19 patients to determine a correlation, if any, with mild outcomes. For the purpose of their study, they consider a mild outcome to be hospitalization for 0-3 d, not requiring assisted ventilation^[8]. Interestingly, they found statistically significant results for an inverse relationship between chest radiograph findings of ground glass opacification and severity scores ≥ 3 with a mild outcome^[8]. Therefore, chest radiographs might be reliable in predicting outcomes, particularly in limited-resource settings and high caseload settings^[8].

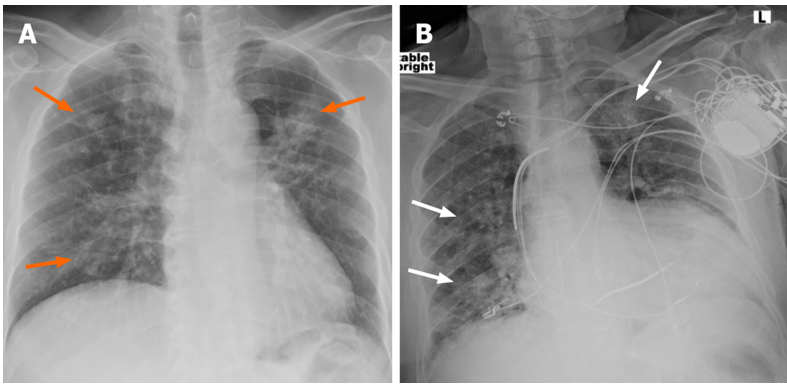


Figure 1 Chest radiography. A: A 57 year old male with coronavirus disease 2019 (COVID-19) infection shows multifocal bilateral air-space opacities (orange arrows) in both lungs; B: Another 74 years old male came with cough and dyspnoea in emergency department shows hazy airspace opacities in both lung parenchymas (white arrows) who later turned out to be positive for COVID-19. A left chest wall AICD device is also seen.

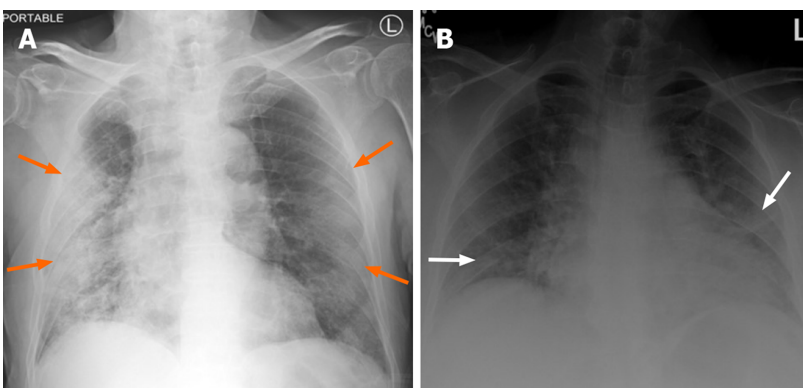


Figure 2 Chest radiography. A: A 62 year old male presented with fever, cough and shortness of breath with coronavirus disease 2019 infection shows large air-space opacities with subpleural and peripheral predominance (orange arrows) in both lungs; B: A 61 years old female came with known cardiomegaly and congestive heart failure presented with cough shows patchy hazy airspace opacities in both lung parenchymas (white arrows).

Further, chest radiography may be used for serial imaging to follow the course of disease in patients during their stay in the hospital and assess the effectiveness of treatment as well^[9].

CT SCAN

Chest CT imaging can demonstrate ground-glass opacities and consolidation early on, even in the absence of significant chest X-ray findings, and is, therefore, believed to have a higher sensitivity for COVID-19 detection^[1,10]. Further, the use of chest CT imaging to meet the increased demand for testing has been considered by some^[10,11]. Ng *et al*^[10] studied non-contrast chest CT images of 21 COVID-19 patients and reported the most commonly observed finding to be peripheral ground-glass opacification.

Early disease, as observed reliably on thin-slice CT, is characterized by peripheral ground-glass opacities with a bilateral distribution, which may or may not be accompanied by consolidation^[11]. This infection has a predilection for the posterior aspects and lower lobes of the lungs^[11]. Further, an early study of imaging patterns indicated that ICU patients were more likely to have consolidation than non-ICU patients^[12]. Consolidation usually appears as the disease progresses and is significantly higher in patients over the age of 50 than those aged 50 or below, which is in keeping with the poorer prognosis observed in the elderly^[13,14]. The full spectrum of chest CT findings observed in COVID-19 disease includes ground-glass opacification (pure, with crazy-paving, or with accompanying consolidation), pure consolidation, air bronchograms, pleural effusions, lymphadenopathy (Figures 3, 4 and 5)^[13,14]. However, pleural effusion, lymphadenopathy, and cavitation are not common findings^[12].

Crazy paving pattern, mentioned above, is a non-specific, thin-slice chest CT finding, which is commonly observed as COVID-19 disease progresses, when

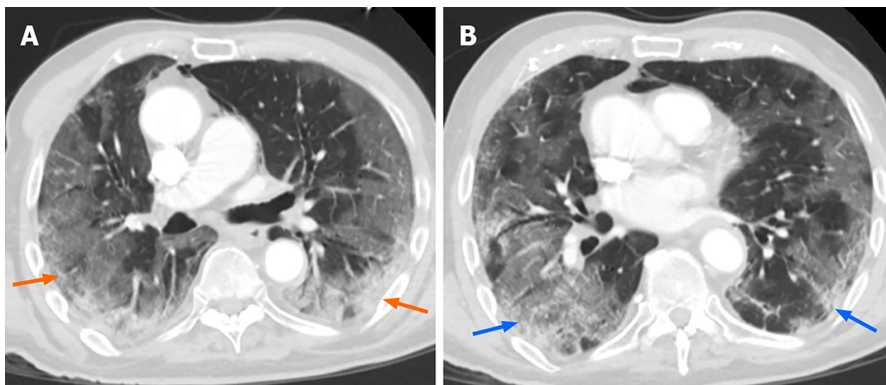


Figure 3 Postcontrast axial computed tomography chest in lung windows (A and B) show bilateral basal and peripheral consolidative opacities with patchy ground glass opacities in crazy-paving pattern in coronavirus disease 2019 infected 63 year old patient (orange and blue arrows).

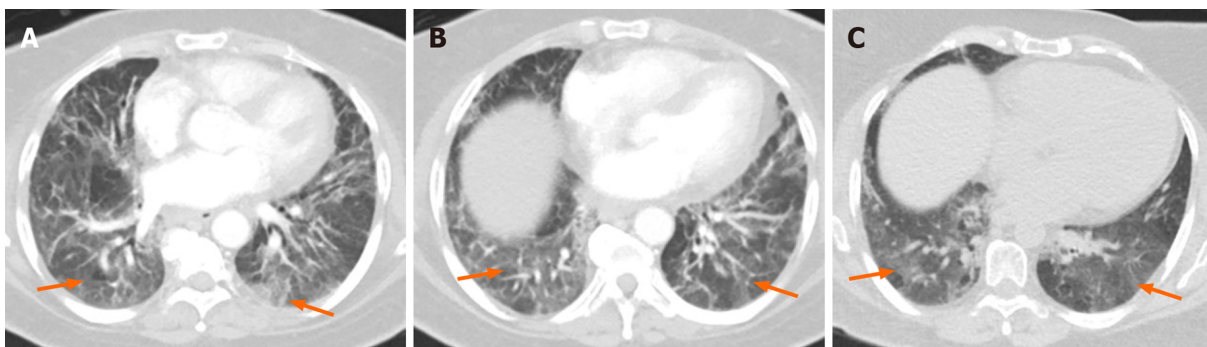


Figure 4 Another coronavirus disease 2019 infected 57 year old patient shows patchy ground glass opacities in both lower lobes without crazy-paving pattern (orange arrows) in postcontrast axial computed tomography chest in lung windows (A-C).

intralobular lines and thickening of inter-lobular septa occur in combination with ground glass opacification (Figure 3)^[13,15]. Further, there have been occasional reports of interesting signs on Computed tomography imaging, such as, Halo sign (nodule with a halo of ground-glass opacification) and reverse-halo (ground-glass attenuation with halo of consolidation)^[16,17,18]. Follow-up of COVID-19 patients with computed tomography also demonstrate a decrease in the size of lesions over time, and the resolution of pure consolidative lesions into organizing pneumonia^[14].

Yang *et al*^[11] developed an objective chest CT severity score (ranging from 0 to 40) and determined the disease to be “severe” for a score ≥ 19.5 . Further, the changes observed in imaging as the disease progresses and resolves have helped provide us with a better idea of the patient’s condition^[19]. Based on the imaging conducted over the course of 26 d, Pan^[19] *et al* simplified the chest CT findings observed, from the onset of symptoms, into 4 stages, as described in the Table 1.

Wang *et al*^[20] studied the non-contrast chest CT findings in 90 patients over the course of one month and observed similar findings, when categorized according to days from symptom onset. Days 0 through 5 were characterized by pure ground-glass opacities, crazy-paving, and consolidation, with 14% of chest CT scans during this time appearing normal^[20]. Days 6 to 11 saw a peak in imaging findings and the development of irregular lines^[20]. Further, Wang *et al*^[20] highlight the initial decline of pure ground-glass opacities (while other imaging findings increase). This was followed by a gradual increase of pure ground-glass opacities during resolution of disease, perhaps due to the decline of the other imaging findings at this time.

Further, the relevance of chest CT imaging during the ongoing pandemic has been demonstrated by reports of RT-PCR negative patients demonstrating significant imaging findings to be confirmed later as COVID-19 patients^[21,22,23]. Therefore, in a scenario where RT-PCR test yields negative results, but patient history and CT findings are concerning for COVID-19 infection, it is important to repeat the RT-PCR test to be thorough^[24].

Dangis *et al*^[25] studied the utility of low dose submillisievert computed tomography

Table 1 Coronavirus disease 2019 infection staging based on chest computed tomography findings and number of days from the onset of the symptoms

Days (from onset of symptoms)	Stage	Typical findings
0-4	Early	GGO; Distribution: Unilateral/bilateral, lower lobes, peripheral
5-8	Progressive	GGO (diffuse); Crazy paving; Consolidation; Distribution: Bilateral, multilobar
9-13	Peak	Peak CT findings: day 10; GGO (diffuse); Crazy paving; Consolidation (dense); Parenchymal bands
≥ 14	Absorption	CT findings improve from day 14; Absorption of consolidation; GGO present; No crazy paving

GGO: Ground-glass opacities.

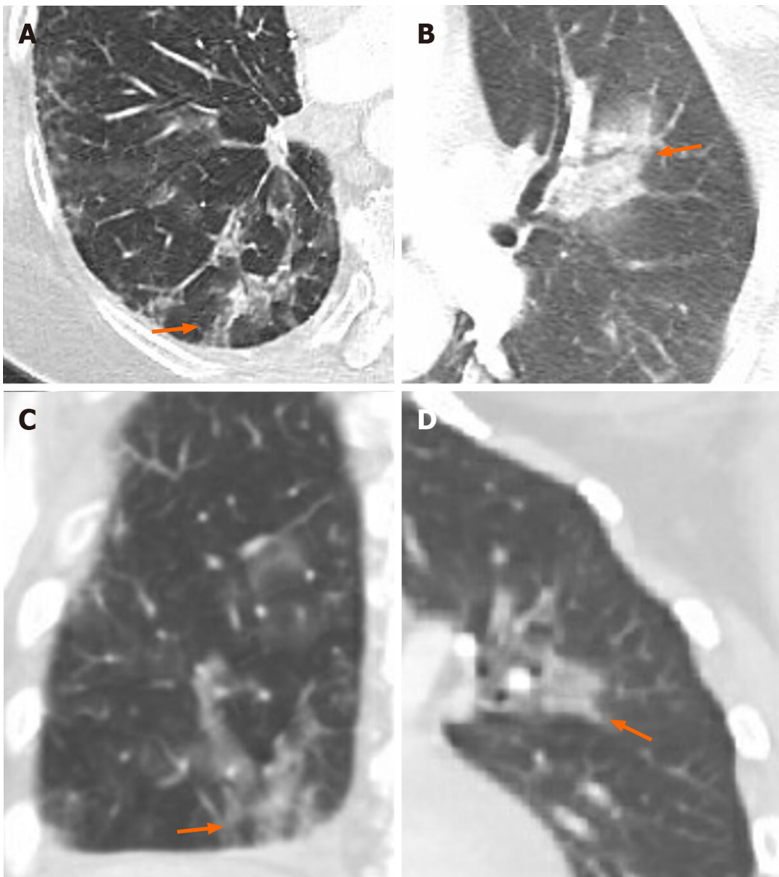


Figure 5 Multifocal patchy peribronchovascular ground glass to consolidative opacities in both lung parenchymas (orange arrows) in enlarged axial (A and B) and coronal (C and D) computed tomography chest in lung window.

in nearly 200 patients and found a high degree of sensitivity and specificity associated with this method. The sensitivity increased by roughly 9% when patients reported symptoms for over 48 h^[25]. Further, the likelihood of having COVID-19 infection was found to be over 90% in the case of positive imaging findings^[25]. Also, it helped identify a co-existing illness in COVID-19 patients and provide differential diagnoses in non-COVID patients^[25].

Despite the advantages of chest CT imaging in COVID-19, health care professionals must realize that it may not always yield significant findings at the time of symptom onset^[4]. Bernheim *et al*^[17] reported that 0 to 2 d from onset of symptoms, chest CT scans revealed no significant findings in 20 of the 36 patients they studied. Given the high level of infectivity associated with COVID-19, it is imperative that health care professionals remain alert to suspicious symptoms, particularly in the context of relevant history, regardless of imaging results. Volume rendered chest CT imaging has been successfully utilized in COVID-19 patients to delineate disease, demonstrate

newly developed lesions and ascertain their distribution^[22,26].

With increasing awareness of hypercoagulability as a component of COVID-19 disease, pulmonary CT angiography is a relevant imaging modality in these patients. In a recent study, Poyiadi *et al*^[27] studied COVID-19 patients who underwent pulmonary CT angiography, found pulmonary embolism in roughly one-fifth of these patients.

POINT OF CARE ULTRASONOGRAPHY

Point of care ultrasonography (POCUS) provides a quick and safe method for imaging and procedural guidance, making it an indispensable tool for optimal care of the patient^[28]. Being an operator dependent imaging modality, it has become an important aspect of the physician's training over the years^[28].

In the ongoing COVID-19 pandemic, the healthcare system must keep pace with the increasing patient load, while managing costs and preventing transmission of infection within the hospital.

As described previously, chest CT imaging helps detect findings of COVID-19 early and accurately. However, it usually requires patient transportation to radiology department and is more expensive. While POCUS may not provide as detailed a picture or as early as computed tomography does, it can be quickly performed at bedside, is an effective tool in experienced hands in diagnosis of lung infection and useful in patients who cannot accept CT examination *e.g.* pregnant patients.

Lung ultrasound helps examine the superficial lung, with normal lung demonstrating horizontal artifacts or "A" lines^[6]. The disease of the subpleural portion of lung results in heterogeneous, vertical "B" lines (Figure 6)^[6]. Apart from that various other artifacts including C, E, and Z lines are described. As the consolidation develops, echogenicity of the lung becomes closer to the liver and also additional static and dynamic changes in bronchi. The use of lung ultrasound is very well described and widely used in the evaluation of patients with dyspnea especially in intensive care units^[29]. Shredded appearance at the interface of the consolidated and normally aerated lung is known as the "Shred sign", which is considered to be the most specific sign of pneumonia in lung ultrasound study (Figure 7)^[29]. The increased echogenicity of the consolidated lung parenchyma shows appearance similar to liver parenchyma, known as "hepatic pattern" or "tissue pattern", another sign of pneumonia (Figure 8)^[30].

Sobh *et al*^[30] studied 55 suspected pneumonia patients and reported that ultrasonography is superior to radiography for the purpose of detecting pneumonia. Further, its sensitivity and accuracy relative to chest CT imaging were 100% and 98.2% respectively. Similarly, a meta-analysis comprising over 1500 patients revealed the area under the curve for lung ultrasound to be 0.95, demonstrating a high level of accuracy as a diagnostic tool for pneumonia^[31].

POCUS may help define severity and progression of COVID-19. The early ultrasound findings seen in COVID-19 patients demonstrate patchy interstitial involvement in the forms of vertical lines and white lung areas^[6]. As the disease progresses, more lung surface is involved, with subsequent development of consolidation^[6]. Further increase in consolidation particularly in the posterobasal lung is concerning for advanced disease and may predict the need for invasive ventilation^[6]. Huang *et al*^[32] studied lung ultrasound findings in 20 non-critical, confirmed COVID-19 patients. Primarily posteriorly located, the lesions included B-lines, patchy consolidation (subpleural) with reduced blood flow, air bronchograms, disrupted pleural lines, thickened pleura, among other findings^[32].

Peng *et al*^[33] also studied 20 COVID-19 patients and reported a correlation between lung ultrasound findings with the degree of involvement, making it useful for disease severity and disease progression assessment. Lung ultrasound may also be useful in understanding which lesions are recruitable, allowing for thorough management of severe COVID-19 infection with relevant maneuvers and change of PEEP^[34].

POCUS has also been shown to be very useful in rapid cardiac evaluation^[35]. It allows evaluation of the pericardial effusion, detects low ejection fraction and IVC measurements. COVID-19 has shown to involve heart as well and has shown to cause myocarditis, pericarditis, and congestive heart failure with or without reduced ejection fraction^[36,37]. Though pericardial effusion is not common it has been reported due to COVID-19 and rapid diagnosis can avoid serious consequences^[38]. COVID-19 has also shown an increased risk of venous thromboembolism and POCUS can help in the periodic vascular evaluation of early detection of venous thrombosis in experienced

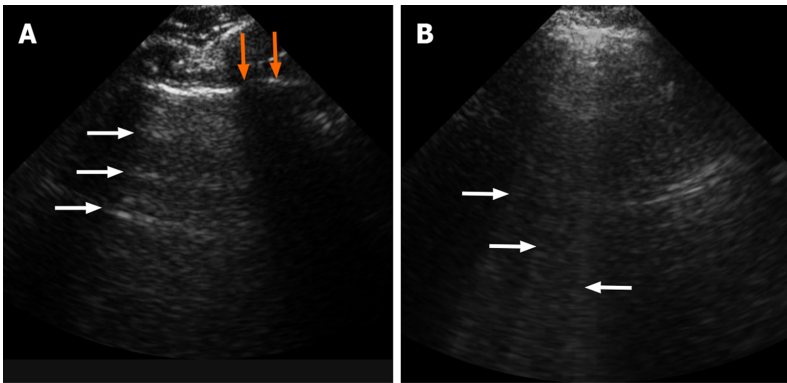


Figure 6 Ultrasonography imaging of the lung ultrasound of the normal lung shows horizontal artifacts, so called “A” lines (white arrows). (A) and vertical heterogenous defect or so called vertical “B” lines in case of patient with consolidation and/or atelectasis (B). Also note normal rib shadow in figure A (orange arrows).

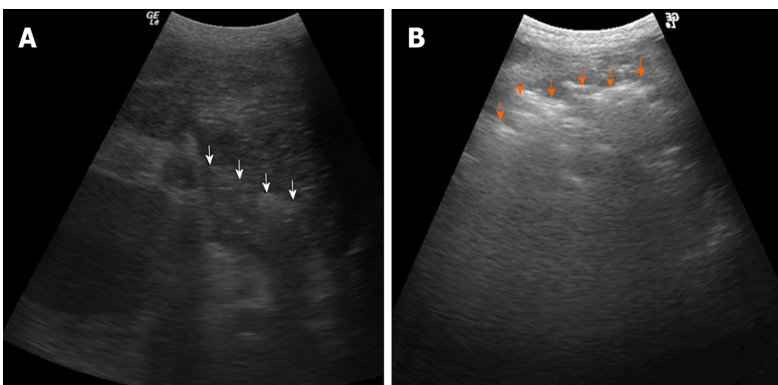


Figure 7 Ultrasonography imaging of the coronavirus disease 2019 positive patient shows shredded appearance, also known as “shred sign” seen with white arrows in left lung base (A) and orange arrows in right lung base (B).

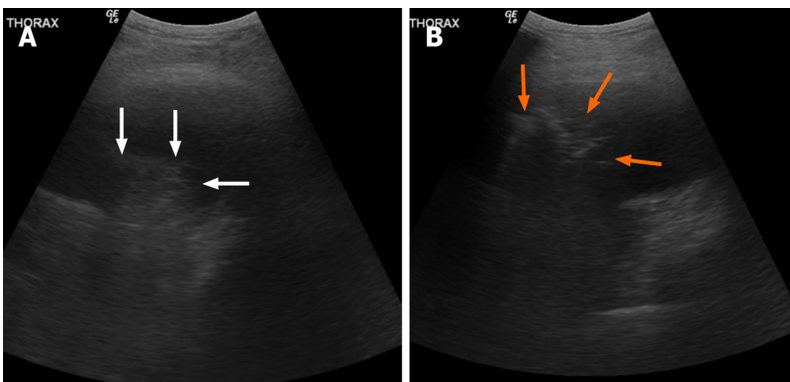


Figure 8 Ultrasonography imaging example of “hepatic pattern” or “tissue pattern” of the consolidated lung (white arrows) with associated pleural effusion in right lung base (A). Another example of ultrasonography “shred sign” of pneumonia (orange arrows) with adjacent pleural effusion in left lung base (B).

hands^[39,40]. This added utility is also key in defining the role of POCUS in the current pandemic.

Some hypothetic examples of the role of POCUS in current pandemic would be pregnant woman hospitalized for preeclampsia develops cough and dyspnea, POCUS can help detect lung parenchyma while waiting for RT-PCR and make appropriate isolation and treatment decisions or patient with COVID develop chest discomfort, identification of pericardial effusion with POCUS can help rapid diagnosis of pericarditis in a smaller hospital where rapid echocardiography or cardiology consultation is not available.

Given the high infectivity of COVID-19, and its spread all over the world, it is imperative for healthcare professionals to follow the correct method of cleaning the ultrasound machines to prevent the spread within the hospital^[7,41].

To this end, the following guidelines have been found to be useful^[7,41]: (1) Clear the basket of all non-essential items, and thoroughly wipe every surface of the machine before entering the patient's room; (2) Replace gel bottles with single-use gel sachets; (3) After performing the ultrasonography, sanitize gloves and then remove any body tissue or fluid present on the machine, using the approved wet wipes; (4) Next, wipe the entire machine (including but not limited to the power cord, probes, screen, keyboard, knobs, wells, wipe containers); (5) Take the machine out of the room while it is still wet; (6) Once outside the room, examine the machine once more for any body tissue or fluids and remove with wipes if observed; (7) Next, wipe the entire machine again; (8) Always use approved wipes and adhere to the "wet time" specific to the type of wipe; and (9) Always remember to wipe the wipes container.

CONCLUSION

As the current COVID-19 pandemic continues to spread and burden the healthcare system all over the world, we must explore all the resources at our disposal to give our patients the best care possible. While laboratory tests and computed tomography imaging are sensitive methods for diagnosis, the increasing burden of disease requires us to effectively utilize bedside ultrasonography to care for more people in a quick and judicious manner. Further, we must continuously look for ways to improve our efficiency while preventing the spread of infection within the hospital.

REFERENCES

- Zu ZY**, Jiang MD, Xu PP, Chen W, Ni QQ, Lu GM, Zhang LJ. Coronavirus Disease 2019 (COVID-19): A Perspective from China. *Radiology* 2020; **296**: E15-E25 [PMID: [32083985](#) DOI: [10.1148/radiol.2020200490](#)]
- Kanne JP**, Little BP, Chung JH, Elicker BM, Ketani LH. Essentials for Radiologists on COVID-19: An Update-Radiology Scientific Expert Panel. *Radiology* 2020; **296**: E113-E114 [PMID: [32105562](#) DOI: [10.1148/radiol.2020200527](#)]
- Ai T**, Yang Z, Hou H, Zhan C, Chen C, Lv W, Tao Q, Sun Z, Xia L. Correlation of Chest CT and RT-PCR Testing for Coronavirus Disease 2019 (COVID-19) in China: A Report of 1014 Cases. *Radiology* 2020; **296**: E32-E40 [PMID: [32101510](#) DOI: [10.1148/radiol.2020200642](#)]
- Yang W**, Yan F. Patients with RT-PCR-confirmed COVID-19 and Normal Chest CT. *Radiology* 2020; **295**: E3 [PMID: [32142398](#) DOI: [10.1148/radiol.2020200702](#)]
- Poggiali E**, Dacrema A, Bastoni D, Tinelli V, Demichele E, Mateo Ramos P, Marcianò T, Silva M, Vercelli A, Magnacavallo A. Can Lung US Help Critical Care Clinicians in the Early Diagnosis of Novel Coronavirus (COVID-19) Pneumonia? *Radiology* 2020; **295**: E6 [PMID: [32167853](#) DOI: [10.1148/radiol.2020200847](#)]
- Soldati G**, Smargiassi A, Inchingolo R, Buonsenso D, Perrone T, Briganti DF, Perlini S, Torri E, Mariani A, Mossolani EE, Tursi F, Mento F, Demi L. Is There a Role for Lung Ultrasound During the COVID-19 Pandemic? *J Ultrasound Med* 2020; **39**: 1459-1462 [PMID: [32198775](#) DOI: [10.1002/jum.15284](#)]
- McDermott C**. Combatting COVID19 – Is Lung Ultrasound an Option? Available from: <https://www.stemlynblog.org/combating-covid19-is-lung-ultrasound-an-option/>
- Cellina M**, Panzeri M, Oliva G. Chest Radiograph Features Predict a Favorable Outcome in Patients with COVID-19. *Radiology* 2020 [PMID: [32484419](#) DOI: [10.1148/radiol.2020202326](#)]
- Bhat R**, Hamid A, Kunin JR, Saboo SS, Batra K, Baruah D, Bhat AP. Chest Imaging in Patients Hospitalized With COVID-19 Infection - A Case Series. *Curr Probl Diagn Radiol* 2020; **49**: 294-301 [PMID: [32305134](#) DOI: [10.1067/j.cpradiol.2020.04.001](#)]
- Ng MY**, Lee EYP, Yang J, Yang F, Li X, Wang H, Lui MMS, Lo CSY, Leung B, Khong PL, Hui CKM, Yuen KY, Kuo MD. Imaging Profile of the COVID-19 Infection: Radiologic Findings and Literature Review. *Radiol Cardiothorac Imaging* 2020; **2**: e200034 [DOI: [10.1148/ryct.2020200034](#)]
- Yang R**, Li X, Liu H, Zhen YL, Zeng WB. Chest CT Severity Score: An Imaging Tool for Assessing Severe COVID-19. *Radiol Cardiothorac Imaging* 2020; **2**: e200047 [DOI: [10.1148/ryct.2020200047](#)]
- Hosseiny M**, Kooraki S, Gholamrezaezhad A, Reddy S, Myers L. Radiology Perspective of Coronavirus Disease 2019 (COVID-19): Lessons From Severe Acute Respiratory Syndrome and Middle East Respiratory Syndrome. *AJR Am J Roentgenol* 2020; **214**: 1078-1082 [PMID: [32108495](#) DOI: [10.2214/AJR.20.22969](#)]
- Li B**, Li X, Wang Y, Han Y, Wang Y, Wang C, Zhang G, Jin J, Jia H, Fan F, Ma W, Liu H, Zhou Y. Diagnostic value and key features of computed tomography in Coronavirus Disease 2019. *Emerg Microbes Infect* 2020; **9**: 787-793 [PMID: [32241244](#) DOI: [10.1080/22221751.2020.1750307](#)]
- Song F**, Shi N, Shan F, Zhang Z, Shen J, Lu H, Ling Y, Jiang Y, Shi Y. Emerging 2019 Novel Coronavirus (2019-nCoV) Pneumonia. *Radiology* 2020; **295**: 210-217 [PMID: [32027573](#) DOI: [10.1148/radiol.2020200274](#)]
- Rossi SE**, Erasmus JJ, Volpacchio M, Franquet T, Castiglioni T, McAdams HP. "Crazy-paving" pattern at thin-section CT of the lungs: radiologic-pathologic overview. *Radiographics* 2003; **23**: 1509-1519 [PMID:

- 14615561 DOI: [10.1148/rg.236035101](https://doi.org/10.1148/rg.236035101)]
- 16 **Li X**, Zeng X, Liu B, Yu Y. COVID-19 Infection Presenting with CT Halo Sign. *Radiol Cardiothorac Imaging* 2020; **2**: e200026 [DOI: [10.1148/ryct.2020200026](https://doi.org/10.1148/ryct.2020200026)]
 - 17 **Bernheim A**, Mei X, Huang M, Yang Y, Fayad ZA, Zhang N, Diao K, Lin B, Zhu X, Li K, Li S, Shan H, Jacobi A, Chung M. Chest CT Findings in Coronavirus Disease-19 (COVID-19): Relationship to Duration of Infection. *Radiology* 2020; **295**: 200463 [PMID: [32077789](https://pubmed.ncbi.nlm.nih.gov/32077789/) DOI: [10.1148/radiol.2020200463](https://doi.org/10.1148/radiol.2020200463)]
 - 18 **Farias LPG**, Strabelli DG, Sawamura MVY. COVID-19 pneumonia and the reversed halo sign. *J Bras Pneumol* 2020; **46**: e20200131 [PMID: [32321009](https://pubmed.ncbi.nlm.nih.gov/32321009/) DOI: [10.36416/1806-3756/e20200131](https://doi.org/10.36416/1806-3756/e20200131)]
 - 19 **Pan F**, Ye T, Sun P, Gui S, Liang B, Li L, Zheng D, Wang J, Hesketh RL, Yang L, Zheng C. Time Course of Lung Changes at Chest CT during Recovery from Coronavirus Disease 2019 (COVID-19). *Radiology* 2020; **295**: 715-721 [PMID: [32053470](https://pubmed.ncbi.nlm.nih.gov/32053470/) DOI: [10.1148/radiol.2020200370](https://doi.org/10.1148/radiol.2020200370)]
 - 20 **Wang Y**, Dong C, Hu Y, Li C, Ren Q, Zhang X, Shi H, Zhou M. Temporal Changes of CT Findings in 90 Patients with COVID-19 Pneumonia: A Longitudinal Study. *Radiology* 2020; **296**: E55-E64 [PMID: [32191587](https://pubmed.ncbi.nlm.nih.gov/32191587/) DOI: [10.1148/radiol.2020200843](https://doi.org/10.1148/radiol.2020200843)]
 - 21 **Salehi S**, Abedi A, Balakrishnan S, Gholamrezanezhad A. Coronavirus Disease 2019 (COVID-19): A Systematic Review of Imaging Findings in 919 Patients. *AJR Am J Roentgenol* 2020; **215**: 87-93 [PMID: [32174129](https://pubmed.ncbi.nlm.nih.gov/32174129/) DOI: [10.2214/AJR.20.23034](https://doi.org/10.2214/AJR.20.23034)]
 - 22 **Huang P**, Liu T, Huang L, Liu H, Lei M, Xu W, Hu X, Chen J, Liu B. Use of Chest CT in Combination with Negative RT-PCR Assay for the 2019 Novel Coronavirus but High Clinical Suspicion. *Radiology* 2020; **295**: 22-23 [PMID: [32049600](https://pubmed.ncbi.nlm.nih.gov/32049600/) DOI: [10.1148/radiol.2020200330](https://doi.org/10.1148/radiol.2020200330)]
 - 23 **Xie X**, Zhong Z, Zhao W, Zheng C, Wang F, Liu J. Chest CT for Typical Coronavirus Disease 2019 (COVID-19) Pneumonia: Relationship to Negative RT-PCR Testing. *Radiology* 2020; **296**: E41-E45 [PMID: [32049601](https://pubmed.ncbi.nlm.nih.gov/32049601/) DOI: [10.1148/radiol.2020200343](https://doi.org/10.1148/radiol.2020200343)]
 - 24 **Koo HJ**, Choi SH, Sung H, Choe J, Do KH. *RadioGraphics* Update: Radiographic and CT Features of Viral Pneumonia. *Radiographics* 2020; **40**: E8-E15 [PMID: [32501740](https://pubmed.ncbi.nlm.nih.gov/32501740/) DOI: [10.1148/rg.2020200097](https://doi.org/10.1148/rg.2020200097)]
 - 25 **Dangis A**, Gieraerts C, Bruecker YD, Janssen L, Valgaeren H, Obbels D, Gillis M, Ranst MV, Frans J, Demeyere A, Symons R. Accuracy and reproducibility of low-dose submillisievert chest CT for the diagnosis of COVID-19. *Radiol Cardiothorac Imaging* 2020; **2**: e200196 [DOI: [10.1148/ryct.2020200196](https://doi.org/10.1148/ryct.2020200196)]
 - 26 **Tang L**, Zhang X, Wang Y, Zeng X. Severe COVID-19 Pneumonia: Assessing Inflammation Burden with Volume-rendered Chest CT. *Radiol Cardiothorac Imaging* 2020; **2**: e200044 [DOI: [10.1148/ryct.2020200044](https://doi.org/10.1148/ryct.2020200044)]
 - 27 **Poyiadji N**, Cormier P, Patel PY, Hadied MO, Bhargava P, Khanna K, Nadig J, Keimig T, Spitzarny D, Reeser N, Klockho C, Peterson EL, Song T. Acute Pulmonary Embolism and COVID-19. *Radiology* 2020; Online ahead of print [PMID: [32407256](https://pubmed.ncbi.nlm.nih.gov/32407256/) DOI: [10.1148/radiol.2020201955](https://doi.org/10.1148/radiol.2020201955)]
 - 28 **Bhagra A**, Tierney DM, Sekiguchi H, Soni NJ. Point-of-Care Ultrasonography for Primary Care Physicians and General Internists. *Mayo Clin Proc* 2016; **91**: 1811-1827 [PMID: [27825617](https://pubmed.ncbi.nlm.nih.gov/27825617/) DOI: [10.1016/j.mayocp.2016.08.023](https://doi.org/10.1016/j.mayocp.2016.08.023)]
 - 29 **Lichtenstein DA**, Mezière GA. Relevance of lung ultrasound in the diagnosis of acute respiratory failure: the BLUE protocol. *Chest* 2008; **134**: 117-125 [PMID: [18403664](https://pubmed.ncbi.nlm.nih.gov/18403664/) DOI: [10.1378/chest.07-2800](https://doi.org/10.1378/chest.07-2800)]
 - 30 **Sobh E**, Oraby S, Gamal F. Role of thoracic ultrasound in the diagnosis of pneumonia. *Eur Res J* 2017; **50**: PA4113 [DOI: [10.1183/1393003.congress-2017.PA4113](https://doi.org/10.1183/1393003.congress-2017.PA4113)]
 - 31 **Long L**, Zhao HT, Zhang ZY, Wang GY, Zhao HL. Lung ultrasound for the diagnosis of pneumonia in adults: A meta-analysis. *Medicine (Baltimore)* 2017; **96**: e5713 [PMID: [28099332](https://pubmed.ncbi.nlm.nih.gov/28099332/) DOI: [10.1097/MD.0000000000005713](https://doi.org/10.1097/MD.0000000000005713)]
 - 32 **Huang Y**, Wang S, Liu Y, Zhang YH, Zheng CY, Zheng Y, Zhang CY, Min WL, Zhou HH, Yu M, Hu MJ. A Preliminary Study on the Ultrasonic Manifestations of Peripulmonary Lesions of Non-Critical Novel Coronavirus Pneumonia (COVID-19). *SSRN J* 2020 [DOI: [10.2139/ssrn.3544750](https://doi.org/10.2139/ssrn.3544750)]
 - 33 **Peng QY**, Wang XT, Zhang LN; Chinese Critical Care Ultrasound Study Group (CCUSG). Findings of lung ultrasonography of novel corona virus pneumonia during the 2019-2020 epidemic. *Intensive Care Med* 2020; **46**: 849-850 [PMID: [32166346](https://pubmed.ncbi.nlm.nih.gov/32166346/) DOI: [10.1007/s00134-020-05996-6](https://doi.org/10.1007/s00134-020-05996-6)]
 - 34 **Schultz MJ**, Sivakorn C, Dondorp AM. Challenges and Opportunities for Lung Ultrasound in Novel Coronavirus Disease (COVID-19). *Am J Trop Med Hyg* 2020; **102**: 1162-1163 [PMID: [32333546](https://pubmed.ncbi.nlm.nih.gov/32333546/) DOI: [10.4269/ajtmh.20-0323](https://doi.org/10.4269/ajtmh.20-0323)]
 - 35 **Kimura BJ**. Point-of-care cardiac ultrasound techniques in the physical examination: better at the bedside. *Heart* 2017; **103**: 987-994 [PMID: [28259843](https://pubmed.ncbi.nlm.nih.gov/28259843/) DOI: [10.1136/heartjnl-2016-309915](https://doi.org/10.1136/heartjnl-2016-309915)]
 - 36 **Inciardi RM**, Lupi L, Zacccone G, Italia L, Raffo M, Tomasoni D, Cani DS, Cerini M, Farina D, Gavazzi E, Maroldi R, Adamo M, Ammirati E, Sinagra G, Lombardi CM, Metra M. Cardiac Involvement in a Patient With Coronavirus Disease 2019 (COVID-19). *JAMA Cardiol* 2020; **5**: 819-824 [PMID: [32219357](https://pubmed.ncbi.nlm.nih.gov/32219357/) DOI: [10.1001/jamacardio.2020.1096](https://doi.org/10.1001/jamacardio.2020.1096)]
 - 37 **Kang Y**, Chen T, Mui D, Ferrari V, Jagasia D, Scherrer-Crosbie M, Chen Y, Han Y. Cardiovascular manifestations and treatment considerations in COVID-19. *Heart* 2020; **106**: 1132-1141 [PMID: [32354800](https://pubmed.ncbi.nlm.nih.gov/32354800/) DOI: [10.1136/heartjnl-2020-317056](https://doi.org/10.1136/heartjnl-2020-317056)]
 - 38 **Allam HH**, Kinsara AJ, Tuaima T, Alfakih S. Pericardial Fluid in a COVID-19 Patient: Is It Exudate or Transudate? *Eur J Case Rep Intern Med* 2020; **7**: 001703 [PMID: [32523923](https://pubmed.ncbi.nlm.nih.gov/32523923/) DOI: [10.12890/2020_001703](https://doi.org/10.12890/2020_001703)]
 - 39 **Pedraza García J**, Valle Alonso J, Ceballos García P, Rico Rodríguez F, Aguayo López MÁ, Muñoz-Villanueva MDC. Comparison of the Accuracy of Emergency Department-Performed Point-of-Care-Ultrasound (POCUS) in the Diagnosis of Lower-Extremity Deep Vein Thrombosis. *J Emerg Med* 2018; **54**: 656-664 [PMID: [29306580](https://pubmed.ncbi.nlm.nih.gov/29306580/) DOI: [10.1016/j.jemermed.2017.12.020](https://doi.org/10.1016/j.jemermed.2017.12.020)]
 - 40 **Middeldorp S**, Coppens M, van Haaps TF, Foppen M, Vlaar AP, Müller MCA, Bouman CCS, Beenen LFM, Kootte RS, Heijmans J, Smits LP, Bonta PI, van Es N. Incidence of venous thromboembolism in hospitalized patients with COVID-19. *J Thromb Haemost* 2020; **18**: 1995-2002 [PMID: [32369666](https://pubmed.ncbi.nlm.nih.gov/32369666/) DOI: [10.1111/jth.14888](https://doi.org/10.1111/jth.14888)]
 - 41 **United States Environmental Protection Agency**. List N: Disinfectants for Use Against SARS-CoV-2 (COVID-19). Available from: <https://www.acep.org/globalassets/images/acep-us-machine-cleaning-covid-19.pdf>



Published by **Baishideng Publishing Group Inc**
7041 Koll Center Parkway, Suite 160, Pleasanton, CA 94566, USA

Telephone: +1-925-3991568

E-mail: bpgoffice@wjgnet.com

Help Desk: <https://www.f6publishing.com/helpdesk>

<https://www.wjgnet.com>

