

World Journal of *Orthopedics*

World J Orthop 2021 May 18; 12(5): 254-345



REVIEW

- 254** Fibula fractures management
Canton G, Sborgia A, Maritan G, Fattori R, Roman F, Tomic M, Morandi MM, Murena L

MINIREVIEWS

- 270** Acute syndesmotic injuries in ankle fractures: From diagnosis to treatment and current concepts
Pogliacomi F, De Filippo M, Casalini D, Longhi A, Tacci F, Perotta R, Pagnini F, Tocco S, Ceccarelli F

ORIGINAL ARTICLE

Retrospective Study

- 292** Reducing unnecessary crossmatching for hip fracture patients by accounting for preoperative hemoglobin concentration
Amin RM, Puvanesarajah V, Chaudhry YP, Best MJ, Rao SS, Frank SM, Hasenboehler EA

- 301** Usefulness of computed tomography based three-dimensional reconstructions to assess the critical shoulder angle
Mah D, Chamoli U, Smith GC

Observational Study

- 310** Potential contribution of pedicle screw design to loosening rate in patients with degenerative diseases of the lumbar spine: An observational study
Bokov A, Pavlova S, Bulkin A, Aleynik A, Mlyavikh S

SYSTEMATIC REVIEWS

- 320** Endoscopic fasciotomy for chronic exertional compartment syndrome of the forearm: Systematic review of outcomes and complications
Marwan Y, Addar A, Algarni N, Algarni N, Burman M, Martineau PA

CASE REPORT

- 329** Rare shear-type fracture of the talar head in a thirteen-year-old child — Is this a transitional fracture: A case report and review of the literature
Monestier L, Riva G, Faoro L, Surace MF
- 338** Three-dimensional printing technology for patient-matched instrument in treatment of cubitus varus deformity: A case report
Sri-utenchai N, Pengrungs N, Srikong K, Puncreobutr C, Lohwongwatana B, Sa-ngasoongsong P

ABOUT COVER

Editorial Board Member of *World Journal of Orthopedics*, Mantu Jain, MD, Reader (Associate Professor), Department of Orthopedics, All India Institute of Medical Sciences, Bhubneswar 751019, Odisha, India. montu_jn@yahoo.com

AIMS AND SCOPE

The primary aim of *World Journal of Orthopedics* (WJO, *World J Orthop*) is to provide scholars and readers from various fields of orthopedics with a platform to publish high-quality basic and clinical research articles and communicate their research findings online.

WJO mainly publishes articles reporting research results and findings obtained in the field of orthopedics and covering a wide range of topics including arthroscopy, bone trauma, bone tumors, hand and foot surgery, joint surgery, orthopedic trauma, osteoarthritis, osteoporosis, pediatric orthopedics, spinal diseases, spine surgery, and sports medicine.

INDEXING/ABSTRACTING

The WJO is now abstracted and indexed in PubMed, PubMed Central, Emerging Sources Citation Index (Web of Science), Scopus, China National Knowledge Infrastructure (CNKI), China Science and Technology Journal Database (CSTJ), and Superstar Journals Database. The WJO's CiteScore for 2019 is 3.2 and Scopus CiteScore rank 2019: Orthopedics and Sports Medicine is 77/261.

RESPONSIBLE EDITORS FOR THIS ISSUE

Production Editor: Yan-Xia Xing; **Production Department Director:** Xiang Li; **Editorial Office Director:** Jin-Lai Wang.

NAME OF JOURNAL

World Journal of Orthopedics

ISSN

ISSN 2218-5836 (online)

LAUNCH DATE

November 18, 2010

FREQUENCY

Monthly

EDITORS-IN-CHIEF

Massimiliano Leigheb

EDITORIAL BOARD MEMBERS

<http://www.wjgnet.com/2218-5836/editorialboard.htm>

PUBLICATION DATE

May 18, 2021

COPYRIGHT

© 2021 Baishideng Publishing Group Inc

INSTRUCTIONS TO AUTHORS

<https://www.wjgnet.com/bpg/gerinfo/204>

GUIDELINES FOR ETHICS DOCUMENTS

<https://www.wjgnet.com/bpg/gerinfo/287>

GUIDELINES FOR NON-NATIVE SPEAKERS OF ENGLISH

<https://www.wjgnet.com/bpg/gerinfo/240>

PUBLICATION ETHICS

<https://www.wjgnet.com/bpg/gerinfo/288>

PUBLICATION MISCONDUCT

<https://www.wjgnet.com/bpg/gerinfo/208>

ARTICLE PROCESSING CHARGE

<https://www.wjgnet.com/bpg/gerinfo/242>

STEPS FOR SUBMITTING MANUSCRIPTS

<https://www.wjgnet.com/bpg/gerinfo/239>

ONLINE SUBMISSION

<https://www.f6publishing.com>



Acute syndesmotic injuries in ankle fractures: From diagnosis to treatment and current concepts

Francesco Pogliacomì, Massimo De Filippo, Daniele Casalini, Alberto Longhi, Fabrizio Tacci, Rocco Perotta, Francesco Pagnini, Silvio Tocco, Francesco Ceccarelli

ORCID number: Francesco Pogliacomì 0000-0002-6464-9701; Massimo De Filippo 0000-0002-3531-8858; Daniele Casalini 0000-0002-6543-2731; Alberto Longhi 0000-0002-7566-7198; Fabrizio Tacci 0000-0002-2389-6554; Rocco Perotta 0000-0001-9597-6732; Francesco Pagnini 0000-0002-4701-7497; Silvio Tocco 0000-0002-7753-9552; Francesco Ceccarelli 0000-0002-4457-0457.

Author contributions: Pogliacomì F designed the study; Pogliacomì F, Casalini D, Longhi A and Ceccarelli F wrote the orthopedic sections; De Filippo M, Perotta R and Pagnini F wrote the radiological parts; Tacci F collected and prepared the images; Tocco S, a native English speaker, revised and corrected the text; All authors have read and approved the final manuscript.

Conflict-of-interest statement: The authors declare no conflict of interests for this article.

Open-Access: This article is an open-access article that was selected by an in-house editor and fully peer-reviewed by external reviewers. It is distributed in accordance with the Creative Commons Attribution NonCommercial (CC BY-NC 4.0) license, which permits others to distribute, remix, adapt, build

Francesco Pogliacomì, Department of Medicine and Surgery, Orthopaedic Clinic, Parma 43126, Italy

Massimo De Filippo, Daniele Casalini, Alberto Longhi, Fabrizio Tacci, Rocco Perotta, Francesco Pagnini, Francesco Ceccarelli, Department of Medicine and Surgery, University of Parma, Parma 43126, Italy

Silvio Tocco, Centro Riabilitativo della Mano e Arto Superiore, Parma 43121, Italy

Corresponding author: Francesco Pogliacomì, MD, Associate Professor, Department of Medicine and Surgery, Orthopaedic Clinic, Via Gramsci 14, Parma 43126, Italy. francesco.pogliacomì@unipr.it

Abstract

A stable and precise articulation of the distal tibiofibular syndesmosis maintains the tibiofibular relationship, and it is essential for normal motion of the ankle joint. The disruption of this joint is frequently accompanied by rotational ankle fracture, such as pronation-external rotation, and rarely occurs without ankle fracture. The diagnosis is not simple, and ideal management of the various presentations of syndesmotic injury remains controversial to this day. Anatomical restoration and stabilization of the disrupted tibiofibular syndesmosis is essential to improve functional outcomes. In such an injury, including inadequately treated, misdiagnosed and correctly diagnosed cases, a chronic pattern characterized by persistent ankle pain, function disability and early osteoarthritis can result. This paper reviews anatomical and biomechanical characteristics of this syndesmosis, the mechanism of its acute injury associated to fractures, radiological and arthroscopic diagnosis and surgical treatment.

Key Words: Ankle; Fracture; Injury; Distal tibiofibular joint; Trauma; Syndesmosis

©The Author(s) 2021. Published by Baishideng Publishing Group Inc. All rights reserved.

Core Tip: Patients with unstable distal tibiofibular syndesmosis injuries associated with fractures require surgical stabilization. The aim of surgical treatment is to restore joint

upon this work non-commercially, and license their derivative works on different terms, provided the original work is properly cited and the use is non-commercial. See: <http://creativecommons.org/licenses/by-nc/4.0/>

Manuscript source: Invited manuscript

Specialty type: Orthopedics

Country/Territory of origin: Italy

Peer-review report's scientific quality classification

Grade A (Excellent): 0
Grade B (Very good): B
Grade C (Good): C
Grade D (Fair): 0
Grade E (Poor): 0

Received: October 31, 2020

Peer-review started: October 31, 2020

First decision: March 31, 2021

Revised: April 14, 2021

Accepted: April 28, 2021

Article in press: April 28, 2021

Published online: May 18, 2021

P-Reviewer: Buckley R

S-Editor: Liu M

L-Editor: Filipodia

P-Editor: Xing YX



congruency and to maintain the stability of the syndesmosis until the ligaments have healed. Satisfactory results depend on correct management from diagnosis to treatment. Static and dynamic fixation systems have similar long-term clinical and radiological outcomes.

Citation: Pogliacomi F, De Filippo M, Casalini D, Longhi A, Tacci F, Perotta R, Pagnini F, Tocco S, Ceccarelli F. Acute syndesmotic injuries in ankle fractures: From diagnosis to treatment and current concepts. *World J Orthop* 2021; 12(5): 270-291

URL: <https://www.wjgnet.com/2218-5836/full/v12/i5/270.htm>

DOI: <https://dx.doi.org/10.5312/wjo.v12.i5.270>

INTRODUCTION

The distal tibiofibular syndesmosis (DTS) complex is critical for maintaining the congruency of the ankle mortise[1] and is the most important supporter of this joint[2]. DTS injuries of sufficient severity can disrupt the normal stability of the ankle and they may occur in many forms, commonly classified into isolated or, more frequently, with an associated malleolar fracture[3]. They are consequent to an external rotation force applied to the foot that leads to eversion of the talus within the ankle mortise[4-6]. Ankle fractures occur with an incidence of 107-148 per 100000 in the adult population[7-9]. About 10% of all are associated to syndesmotic injury, and this percentage is twice as high in patients who require internal fixation[10]. Therefore, it is crucial that surgeons adequately diagnose these lesions, which are present in up to 40% of all type B injuries according to Danis-Weber classification and up to 80% of all type C[11]. Persistent ankle pain, function disability and early osteoarthritis are potential problems related to misdiagnosed or inadequate treatment[12-14], and for this reason it is necessary to acquire an accurate diagnosis and maintain syndesmotic reduction when treating ankle fractures with concomitant syndesmotic disruption.

Patients with unstable injuries require surgical stabilization[15]. Various fixation techniques have been introduced over recent decades (metallic and bioabsorbable screws, staples, polyester bands, syndesmosis hooks, Kirschner wires and suture-button fixation)[2,16-18]. Static fixation (SF) with one or more cortical screws is the reference standard fixation method. However, some significant issues should be considered. Screw loosening, breakage[19], discomfort, pain related to overcompression, the need for a reoperation for screw removal and the risk of late diastasis after early removal are potential drawbacks of this type of fixation[20-24]. An alternative dynamic method of fixation (DF) uses an implanted suture-button device; it consists of a nonabsorbable synthetic suture between two metallic buttons implanted across the DTS[25]. Recently, this technique has become increasingly popular because it allows a more physiological articular movement, early rehabilitation, satisfactory functional outcomes and no requirement for implant removal[2,25]. However, there is no unique consensus on whether DF methods are superior to the static ones in terms of functional outcomes, change in range of motion, complication rates and incidence of reoperation[26,27]. The aim of this study is to review anatomical and biomechanical characteristics of DTS, the mechanism of its acute injury associated to fractures, radiological and arthroscopic diagnosis and surgical treatment.

ANATOMY AND BIOMECHANICS

The bony anatomy of the distal tibia and fibula is important for the osseous stability of the tibiofibular joint, which is a syndesmosis formed by the medial rough convex surface of the distal fibula which articulates with the lateral triangular fibular notch of the distal tibia[1,28]. The lateral ridge of the distal tibia bifurcates into an anterior and posterior margin, forming a larger anterior (Chaput's tubercle) and a smaller posterior tubercle (Volkman's tubercle). These tubercles represent the tibial attachment sites respective of the anterior and posterior syndesmotic ligaments. Posterior tubercle functions as a fulcrum during external rotation injury, and the fibula spins around its longitudinal axis. Between the anterior and posterior margins of the tibia there is a triangular concave notch, named incisura tibialis, where the convex medial margin of

the distal fibula rests. In about 75% of ankles, there are cartilage covered facets at the tibiofibular contact zone, forming a true synovial joint[29]. This articulation can act as a guide for the alignment of the ankle mortise in ankle fracture fixation or in syndesmosis reconstruction.

The ligamentous structures of the syndesmosis (Figure 1) function in addition to the bony support to provide syndesmotic stability by resisting the axial, rotational and translational forces. The distal syndesmosis complex may be further divided into its four components as follows[30].

The anterior inferior tibiofibular ligament (AITFL) traverses the joint at an oblique 45° angle from the Chaput's tubercle of the tibia to the Wagstaffe-Le Forte tubercle of the fibula. It is often composed of three bundles forming a trapezoidal shape. Rarely, an accessory anteroinferior tibiofibular ligament (Bassett's ligament) runs parallel and inferior to the AITFL. AITFL is the weakest of the syndesmotic ligaments and is the first ligament subjected to stress during an external rotation force of the fibula around its longitudinal axis.

The posterior inferior tibiofibular ligament (PITFL) is the strongest portion of the complex, and it lies in the posterior surface of the syndesmosis. From its origin, at the Volkman's tubercle, it descends posterolaterally to insert in the posterior aspect of the distal fibula. Tear of PITFL can occur in Lauge-Hansen supination-eversion, pronation-abduction or pronation-eversion injury. However, in these cases, forces usually result in a posterior malleolar avulsion fracture due to the ligament strength[31].

The interosseous ligament is formed by a thickening of the lowermost end of the interosseous membrane. This ligament functions as a "spring" to accommodate slight separation of the mortise during dorsiflexion of the ankle. The interosseous membrane connects the tibia and fibula throughout their length and plays a minimal role in syndesmotic stability[32].

The transverse tibiofibular ligament extends horizontally from the proximal margin of the fibular malleolar fossa to the dorsodistal rim of the tibia distal to the PITFL; it may protract to as far as the dorsal aspect of the medial malleolus[31]. It has a fibrocartilaginous appearance that functions as a labrum to deepen the posteroinferior rim of the tibia. The presence of another ligament, the posterior intermalleolar ligament, is still controversial. Its occurrence varies from 19% in magnetic resonance imaging to 82% in dissected anatomical specimens[33]. Although the posterior intermalleolar ligament has been neglected in the anatomy literature, the existence of this ligament has been revealed recently to be a cause of posterior impingement syndrome that brings about posterolateral ankle pain during plantar flexion[34,35]. Furthermore, radiological studies have demonstrated that this ligament is an almost invariably present anatomical entity[36,37]. However, its anatomical role is still unknown.

In a study based on computed tomography (CT) imaging of 100 normal syndesmosis, Elgafy *et al*[38] showed variation of the articulation between genders, with variation between the anterior and posterior dimensions within the syndesmosis. This diversity of the articulation poses both diagnostic and operative challenges to the practitioner.

Despite a small amount of motion, DTS has a very important role in ankle joint biomechanics even if only very small rotations and displacements are detected indicating that the fibula is closely attached to the tibia. With the ankle in external rotation, the fibula translates medially (0-2.5 mm) and posteriorly (1.0-3.1 mm) and externally rotates (2°-5°), even though this little displacement cannot be estimated on radiographs[39]. While moving from plantar flexion to dorsiflexion, Peter *et al*[40] reported a 2° external rotation and 1.25 mm lateral translation of the lateral malleolus to accommodate the irregularly shaped talus.

The disruption of ligamentous structures around the ankle modifies this "equilibrium." Anatomical study suggested the relative importance of any syndesmotic ligament to the overall syndesmotic stability (35% by AITFL, 22% by interosseous ligament, 9% by superficial PITFL and 33% by deep PITFL)[41]. Sectioning of the AITFL results in the greatest reduction in resistance to external rotation, although there is a significant decrease in resistance with each sequential ligament sectioned. In contrast, sectioning of the PITFL results in the greatest decrease in resistance to internal rotation[42]. Additionally, the deltoid ligament confers secondary stability by resisting lateral shift of the talus[43]. Ramsey *et al*[44] reported that when the deep horizontal part of the deltoid ligament is cut, this diastasis increases to 3.7 mm and described that when the talus moves laterally by 1.0 mm, the contact area in the tibiotalar articulation is decreased by 42%.

Moreover, Burns *et al*[45] showed that a complete disruption of syndesmosis with a deltoid ligament tear caused a 40% decrease in the tibiotalar contact area and a 36% increase in the tibiotalar contact pressure. Therefore, a precise and stable articulation is

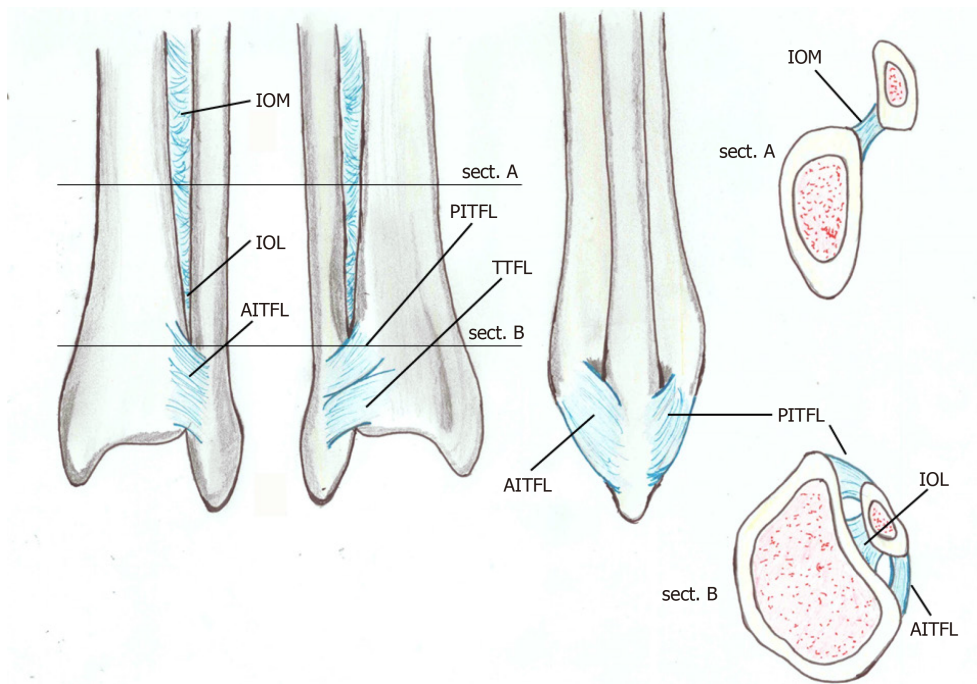


Figure 1 Anatomy of the distal tibiofibular syndesmosis: anterior view, posterior view, lateral view and proximal and distal coronal view.
AITFL: Anterior inferior tibiofibular ligament; IOL: Interosseous ligament; IOM: Interosseous membrane; PITFL: Posterior inferior tibiofibular ligament; TTFL: Transverse tibiofibular ligament.

required for normal motion of the ankle.

MECHANISM OF INJURY AND CLASSIFICATION

Although the precise mechanism of injury in the DTS often remains unclear, it has been demonstrated that these lesions occur more frequently with some types of rotational ankle fractures such as in pronation-external rotation and pronation-abduction and less frequently in supination-external rotation[34].

The most frequently used ankle fracture classifications are the Danis-Weber, AO-Müller, and Lauge-Hansen. The Weber classification (Figure 2) is based on the position of the distal fibular fracture in relation to the syndesmosis. Weber A includes fractures below the level of the syndesmosis, those at the level of the syndesmosis are Weber B, and Weber C includes fractures above the level of the syndesmosis. Type C also includes rotational ankle traumas with high fibular rupture, the so-called “Maisonneuve fractures,” which are usually associated to syndesmotic disruption. The syndesmosis is rarely involved in Weber A fractures, although it is torn in up to 80% of all type C injuries[7,12]. In this case, we have disruption of the deltoid ligament caused by external rotation and peroneal fracture above the level of distal syndesmosis. The status of the syndesmosis is unclear in Weber B lesions caused by an external rotation mechanism, but some studies report lesions in up to 40% of cases[7,12].

In the AO/OTA classification, ankle fractures are classified as infrasyndesmotic (correlating to Danis-Weber Type A injuries), trans-syndesmotic (correlating to Danis-Weber Type B injuries) or suprasyndesmotic (correlating to Danis-Weber Type C injuries) with other subsets based on the presence or absence of medial or posterior malleolar injuries[46,47]. This contrasts with the Danis-Weber classification that ignores the medial and posterior structures. AO/OTA classification system also includes the fracture patterns described by Lauge-Hansen and Danis-Weber[47].

The Lauge-Hansen classification system instead gives more information about the mechanism of injury and anatomic structures involved, and it divides these fractures in four categories and other subgroups. It includes mechanism (with the position of the foot supinated or pronated), the direction of the force at the moment of the trauma (a force causing abduction, adduction or external rotation) and has multiple stages for each type depending on severity[48]. Lauge-Hansen used amputated limbs to divide ankle fractures in which the position of the foot at the time of the traumatic event and to the direction of the forces were crucial points for the injury mechanism knowledge.



Figure 2 Radiographs representing the three types of ankle fractures according to Danis-Weber. A: Infrasyndesmotic; B: Trans-syndesmotic; C: Suprasyndesmotic.

In supination external rotation injuries, the most commonly occurring of Lauge-Hansen's categories, the lateral structures are under stress, and the medial structures are finally compromised. In Stage 1 the talus rotates laterally and pushes the lateral malleolus posteriorly stressing the AITFL that is injured. In Stage 2 progressive external rotation in supination and lateral rotation of the talus results in an oblique or spiral fracture of the distal fibula. Stage 1 and stage 2 are considered stable injuries or fractures. With more force, in Stage 3, the PITFL is injured, or the posterior malleolus (PM) is fractured. Finally, in Stage 4, the medial malleolus is fractured, or the deltoid ligament is disrupted.

Supination adduction injuries are caused by compression force under the medial ankle structures and traction of the lateral ankle structures. In stage 1 either a transverse fracture of the lateral malleolus below the level of the tibial plafond is produced, or the lateral ligaments of the ankle are avulsed of the distal fibula. In Stage 2, either a vertical medial malleolus fracture or injury to the deltoid ligament occur.

In pronation external rotation lesions the foot is pronated, and the deltoid ligament is stressed; this mechanism produces injury of the medial ankle structures. In addition, the external rotation involves the lateral and posterior ankle structures. This results in fibula and PM fractures. In Stage 1 with either deltoid ligament rupture or avulsion, fractures of the medial malleolus are evident. Injuries of the AITFL occur in Stage 2, oblique or spiral fibula fractures proximal to the level of the tibial plafond are observed in Stage 3, and fractures of the PM or injury to the PITFL occur in Stage 4.

In pronation abduction injuries the abduction of the talus causes traction of the medial ankle structures. Stage 1 injuries involve rupture of the deltoid ligament or transverse fractures of the medial malleolus, whereas Stage 2 injuries are associated with damage to the AITFL. In Stage 3, transverse or comminuted fibula fractures were observed above the level of the tibial plafond[47-49].

In conclusion, ankle fractures that are more frequently associated to DTS injuries are those localized over the syndesmosis. Less frequently, these lesions are present in fractures at the level of the syndesmosis and rarely in those positioned under. Concomitant traumas of the medial structures may influence the correct reduction of the fibula inside the tibia at this level and consequently the prognosis.

CLINICAL AND INSTRUMENTAL EXAMINATION

Patients affected by syndesmotic injuries associated to fractures are characterized by swelling, instability and pain at rest that makes loading impossible and is exacerbated by palpation and compression[50].

Several specific syndesmosis tests have been described. The squeeze test consists of compressing the tibia against the fibula at the mid-point of the calf, thus inducing a movement separating the two bones distally[51]. The test is considered positive when it produces a distal pain around the interosseous ligament[52].

The Frick test is performed by applying an external rotation to the foot and ankle with the knee flexed 90°[53]. The ankle is dorsiflexed, and the external rotation of the foot replicates the mechanism of the injury. Pain indicates a positive test[54].

In the Cotton test, medial and lateral forces are applied to the talus; the increased pain in medial-lateral plane translation indicates a positive test result[55].

Finally, in the crossed-leg test the patient is in a sitting position, and the mid fibula of the injured leg is placed on the knee of the healthy leg. The knee is then pushed on the injured leg toward the ground; syndesmosis pain demonstrates a positive result[54].

Unfortunately, none of these examinations are directive in the diagnosis, especially if a fracture is present, because induced pain can limit its development. For this reason, the diagnosis should not only be made based on medical history and physical examination but in conjunction with imaging (also helpful for the preoperative planning) and intraoperative evaluation[55].

Generally, anteroposterior (AP), laterolateral and mortise views are used during radiographic examination. The AP view is useful for evaluating the distal epiphyseal portion of the fibula and tibia. The mortise projection is a variant of the AP projection (obtained with the internal rotation of the foot by 10-15°). The lateral view allows a good evaluation of the posterior tibial tuberosity (Figure 3). Three radiographic parameters have been established to evaluate diastasis of the distal tibiofibular joint: tibiofibular clear space (TFCS)[56,57], tibiofibular overlap (TFO)[56,57] and medial clear space (MCS)[58] (Figure 4).

The TFCS is the distance between the lateral border of the posterior tibial malleolus and the medial edge of the distal epiphysis of the fibula, measured about 10 mm above the tibial plafond in both the AP projection and in the mortise view. Most authors believe that TFCS is the most reliable parameter to suspect a syndesmotic lesion and consider a TFCS greater than 6 mm as pathological[51,59]. Schoennagel *et al*[60] have shown that by setting a TFCS cut-off of 5.3 mm and considering values greater than 5.3 mm as indicative of syndesmotic lesions and values lower than 5.3 mm as not indicative of such lesions, is possible to have a diagnostic accuracy with a specificity and sensitivity of 75% and 82%, respectively.

The TFO is the distance between the lateral edge of the anterior tibial tubercle and the medial edge of the distal epiphysis of the fibula. In normal conditions it should be > 6 mm in the AP projection and > 1 mm in the mortise view. It has been demonstrated that the TFO value has a high degree of variability depending on the rotation of the foot at the time of the X-ray acquisition and that the only parameter that does not vary, according to the rotation of the foot, is the TFCS[51,61].

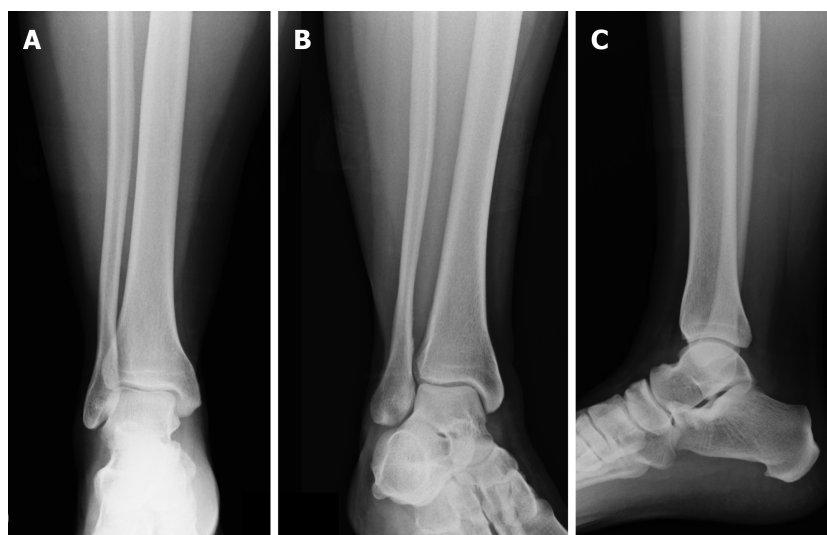


Figure 3 X-ray of the right ankle: standard projections. A: Anteroposterior; B: Mortise; C: Laterolateral views.

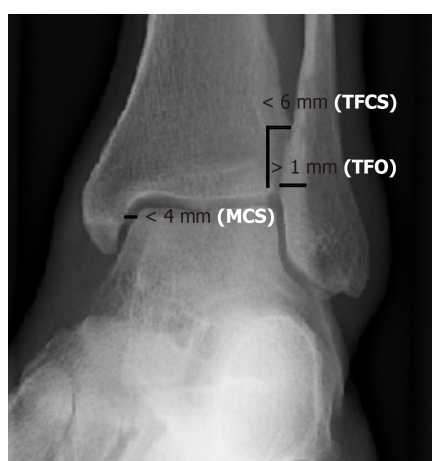


Figure 4 Normal values of tibiofibular clear space, tibiofibular overlap and medial clear space in left ankle mortise projection. MCS: Medial clear space; TFCS: Tibiofibular clear space; TFO: Tibiofibular overlap.

The MCS, measured in the projection of the mortise, is the widest distance between the lateral edge of the medial tibial malleolus and the medial edge of the talus. In normal conditions the MCS should be equal to or less than the space between the tibial plafond and the talar dome[51]. Like the TFO, the value of the MCS varies depending on the rotation of the foot at the time of acquisition of the radiograph[61]. Schoennagel *et al*[60] demonstrated that using the distance of 2.8 mm as a cut-off is possible to discriminate between patients with syndesmotic lesions and patients without syndesmotic lesions with a specificity and sensitivity of 59% and 73%, respectively, and if both TCFS and MCS values were altered, the specificity increased to 86%. Grath *et al*[62] affirmed that it may also be useful to compare the MCS of the affected side with the contralateral and that differences greater than 2 mm may be indicative of syndesmotic lesions.

However, due to the interobserver variation, wide anatomic variability in the depth of the peroneal groove and the shape of the tibial tubercles, these measurements are not reliable unless there is significant disruption of the DTS[1]. If the measurements obtained by radiography are ambiguous, bilateral CT can be useful (Figure 5). Horizontal slices allow measurement of the intertibiofibular gap. With a threshold of 4 mm, the anterior gap (selectivity, 56.5%; specificity, 91.7%) and medial gap (selectivity, 74.4%; specificity, 78.4%) are reproducible measurements, unlike the posterior gap. AP translation of the fibula and rotation with respect to the tibia, TFCS and TFO can also be assessed, and peroneal groove anatomy can be evaluated[51].

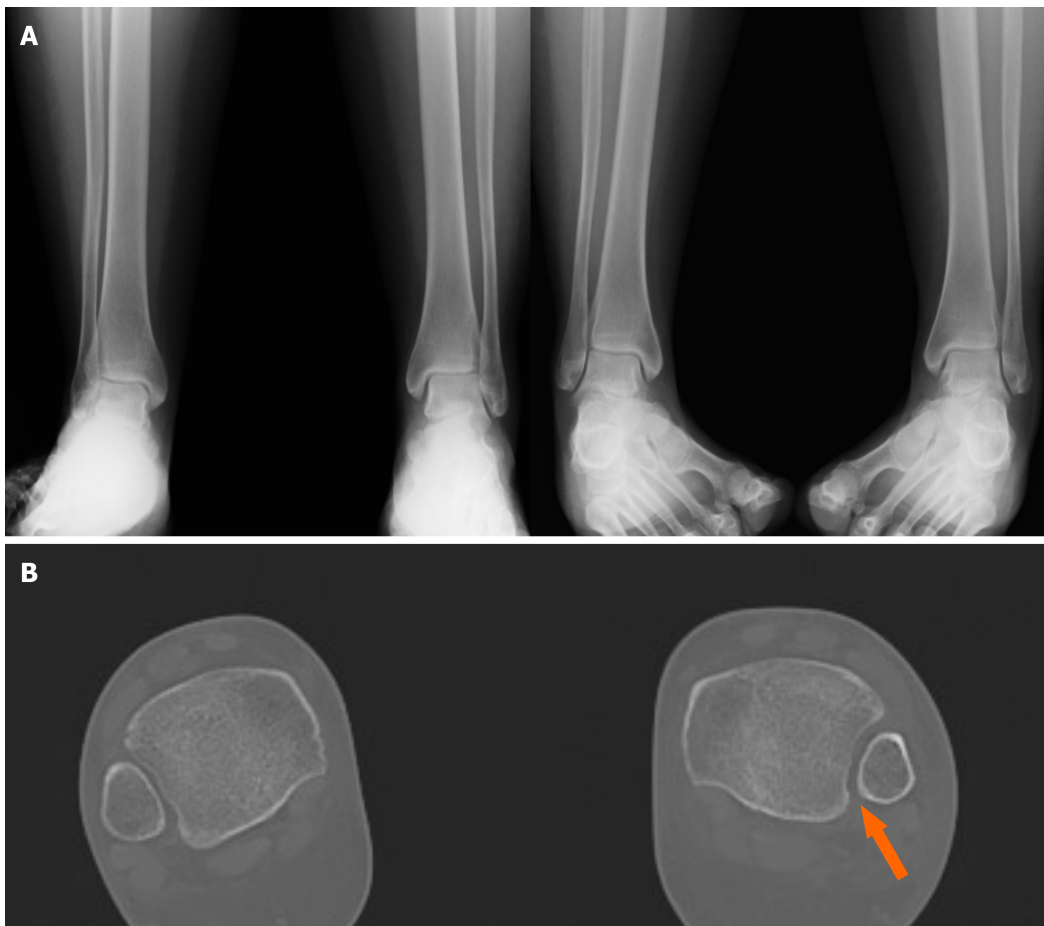


Figure 5 Suspect of a left syndesmotic lesion. A: Comparative X-ray and based on the measurements of the tibiofibular clear space, tibiofibular overlap and medial clear space, the exam was considered negative; B: Computed tomography assessment showed a difference (> 2 mm) between both sides (arrow), demonstrating the presence of a syndesmotic lesion.

In those cases of DTS injuries associated with fractures, preoperative CT should be useful to better study the morphology of the fracture, determine the correct size and shape of the PM fracture, which will determine if the associated plan is the correct surgical procedure[63,64]. In addition, comparative CT can be used in the postoperative evaluation of the correctness of the reduction of the diastasis (Figure 6). The current trend is in favor of stress X-rays and stress CT (external rotation and dorsiflexion) or CT in weight-bearing[51], especially in the detection of chronic disruptions. Magnetic resonance imaging has added benefit to assess the soft tissue condition directly, but it has been found to be useful in both acute and chronic isolated syndesmotic injuries[1,65,66].

Furthermore, the modified Cotton test is largely used during surgery, and it consists in laterally fibula distraction with the use of a bone hook or reduction clamp (Figure 7). An intraoperative fluoroscopic mortise view of the ankle that shows a widening more than 2 mm in the syndesmosis suggests an unstable injury that necessitates fixation[67]. Another intraoperative specific test for the deltoid lesion is the external rotational stress test that is performed after lateral fibular fixation. If there is a talar tilting leading to MCS more than or equal to 5 mm, then the test should be considered positive[68].

Finally, ankle arthroscopy also enables diagnosis of syndesmosis instability, and it can be used as a diagnostic and therapeutic tool[51]. The syndesmosis is judged unstable as of 2 mm diastasis, which is commonly tested by introducing an arthroscopic palpation hook into the tibiofibular joint line[58,59]. If fixation is indicated, then arthroscopy may guide extra-articular stabilization[51].



Figure 6 Postoperative computed tomography scans of a syndesmotic lesion showing a widened tibiofibular space (arrows) indicative of an inadequate reduction.

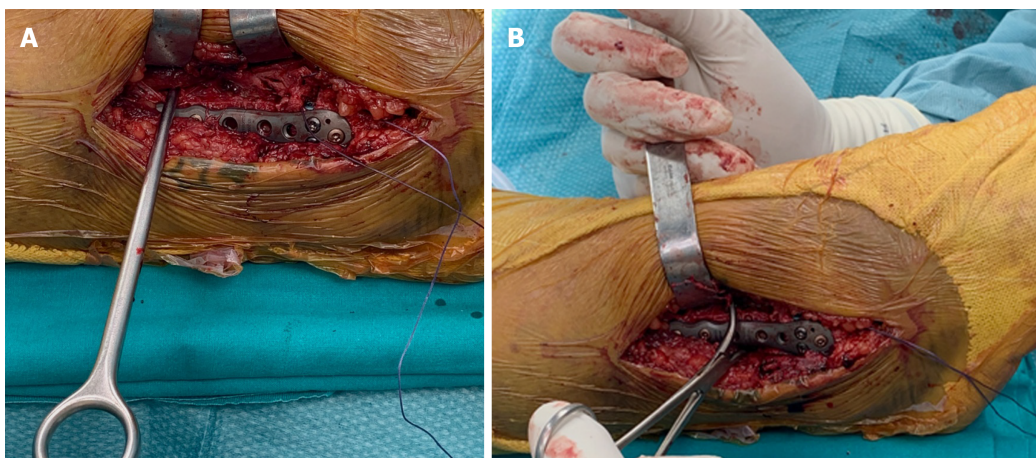


Figure 7 Intraoperative view. A: Modified Cotton test with hook; B: Modified Cotton test with reduction clamp.

SURGICAL TREATMENT AND POSTOPERATIVE CARE

All injuries with evident diastasis require surgical stabilization[69,70]. The goal of treatment is to restore joint congruency and to maintain the stability of the syndesmosis until the ligaments have healed. The ideal implant should stabilize the joint but also allow its physiological movements and that of the ankle, thus guaranteeing an early mobilization.

Surgery initially involves stabilization and restoration of the fibular length, followed by the fixation of the PM and finally of the tibia. The indications for fixation of the PM remain controversial. Historically, these included fractures involving > 25% to 33% of the joint surface, displacement > 2 mm, ankle instability in association to syndesmotic lesion and persistent posterior subluxation of the talus[71,72].

However, up to now, there has not been any strong clinical evidence for this practice, and the percentage of articular surface of PM has been questioned, as studies

have demonstrated the importance of even small posterior malleolar fragments to ankle stability, and surgical indications have expanded. The historic criteria based on size could underestimate the number of fractures that requires operative intervention[73].

In a prospective study of outcomes of syndesmotic injuries with posterior malleolar fractures, Miller *et al*[74] found that posterior malleolar fixation was equivalent to fixation with syndesmotic screws or combined fixation. The results of these studies would lead to the conclusion that even small posterior malleolar fractures should be repaired in ankle fractures with syndesmotic disruption. Anatomic reduction of the PM additionally recreates the incisura fibularis, the congruity of the articular tibial surface and should minimize the risk of posterior translatory malreduction of the syndesmosis as the PITFL is intact.

Warner *et al*[75] went so far as to say ligamentous repair of the PITFL is critical in ankle fractures. They studied PITFL injuries in the absence of the PM fracture and found that most lesions occur as a delamination of the ligament from its attachment to the PM. In conclusion, they suggested that repair techniques to fix the PITFL to its footprint on the PM may provide an effective stabilization of the syndesmosis and that this approach could potentially obviate the need for further DTS stabilization.

Different surgical approaches and techniques for internal fixation of PM fractures [percutaneous anterior to posterior screw fixation or open reduction and internal fixation using screws or buttress plates from posterior to anterior] have been reported[76]. Indirect reduction and stabilization with AP screws remain the early common method[76,77]. The disadvantages of this type of fixation of the PM are that anatomical reduction is more difficult due to the interposition of soft tissues or loose bony fragments, which is hard to assess reduction satisfactorily using an image intensifier, and the fixation of small or comminuted fragments is technically difficult. Furthermore, symptomatic tibial nerve entrapment syndrome has been described[78].

For this reason, several surgeons prefer open and anatomical reduction. The choice of the surgical approach must be guided by the characteristics of the ankle's fracture thus including the PM. Precise classifications of PM fractures, based on CT examination, are undoubtedly helpful as different studies have shown inadequacy of radiographs in assessing the shape and the size of the PM detached but also the real involvement of the fibular notch and of the medial malleolus[63,79,80]. In this context the most utilized classification systems are from Haraguchi[64], who conducted a CT study to clarify the pathologic anatomy of the PM fractures, and from Bartoniček[63].

The posterolateral approach has been described in the literature and has received much attention. Surgery is usually performed in the prone position. Most surgeons prefer an incision between the peroneal and Achilles tendons, but others did perform the incision just medial to the posterior border of the fibula[81]. This approach allows a direct visualization and reduction of the posterior fragment, even if addressing the posteromedial malleolar fracture is more difficult. In this case an incision immediately laterally to the Achilles tendon can facilitate fixation of the more medial part of the PM fracture. On the other hand, posterolateral approach has the potential to cause sural nerve injuries and that prone position may render open reduction and internal fixation of the medial malleolus more challenging[76].

Another possible approach is the posteromedial, which allows fixation of the medial and PM through the same incision, even if for a typical posterolateral fragment it would seem suboptimal[82].

In types II and IV fractures according to Bartoniček, which correspond to type I of Haraguchi's classification, a posterolateral approach with mobilization of the peroneal tendon is used almost exclusively. For fixation of type III lesions, which corresponds to type II of Haraguchi's classification, a posteromedial approach is preferred. In selected cases, in which the reduction of both posterior fragments is not possible, a combined posteromedial and posterolateral approach have been utilized[83,84].

Definitive osteosynthesis of PM fragments depends on the number and size of the fragments and on quality of the bone. Later, the surgeon must decide the necessity of an additional syndesmotic fixation. This choice depends on DTS stability and must be evaluated manually and fluoroscopically during surgery[21]. Various stabilization modalities of DTS have been used[2]. They can be divided by SF techniques (metallic or bioabsorbable screws, staples, syndesmosis hooks, Kirschner wires) and DF techniques (suture-button)[2,16-18].

SF with cortical screws is the reference standard fixation method. However, some significant issues should be considered. Screw loosening, breakage (Figures 8 and 9), discomfort, pain related to overcompression, the need for a reoperation for screw removal and the risk of late diastasis after early removal are potential drawbacks of this type of fixation[20-24]. Syndesmotic screw is the oldest surgical device utilized,

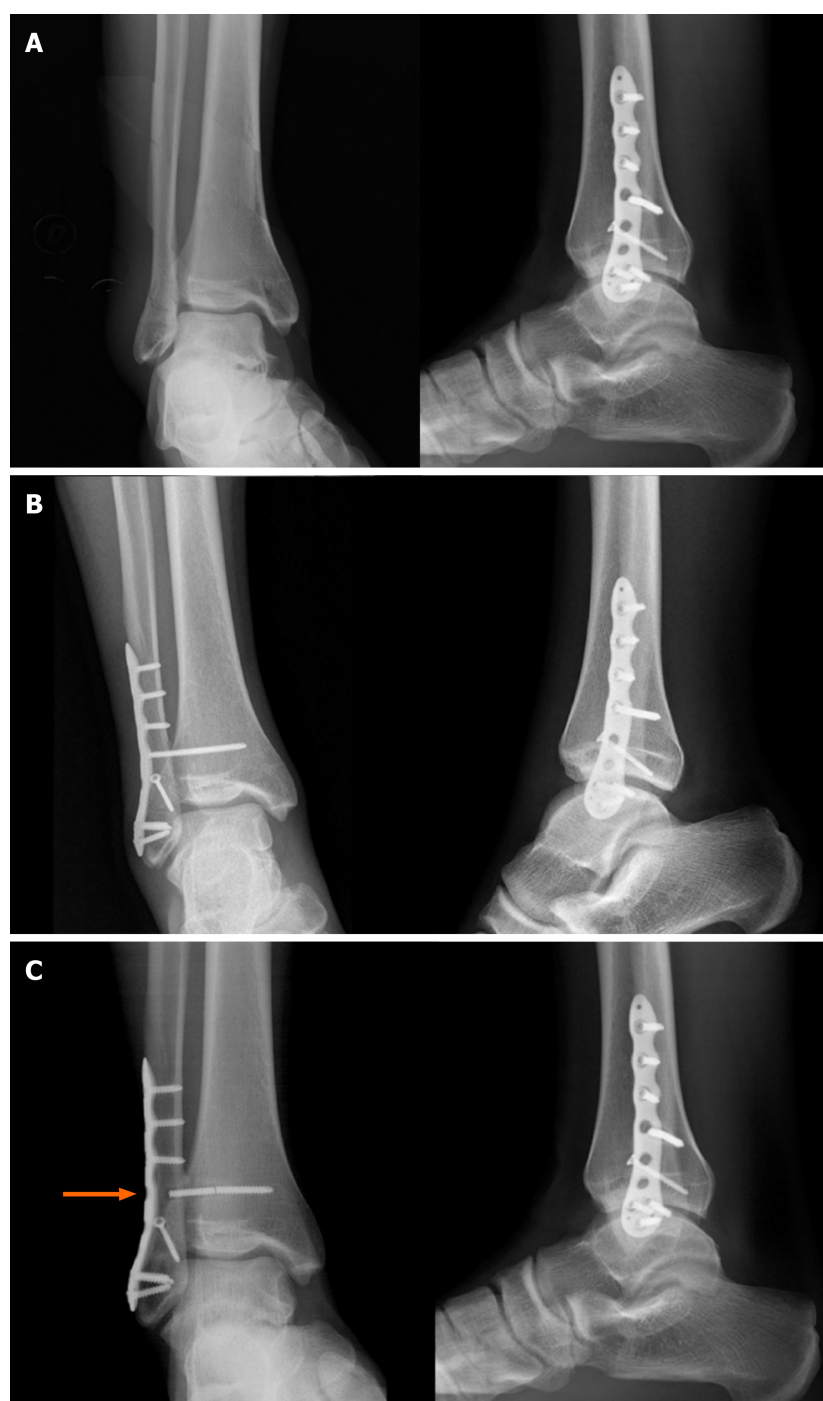


Figure 8 Type B ankle fracture. A: Preoperative X-rays; B: Radiographs 1 mo after surgery; C: Radiographs 2 mo after surgery following removal of the screw that was discovered broken (arrow) during the second procedure.

and it was first described by Burwell *et al*[70] in 1965. In the literature there is a wide debate about the type, size and number of screws to be placed, the optimal distance from the tibial plafond, the optimal number of cortices to cross, the position of the foot during fixation, the timing and real need for screw removal.

The screw that is more frequently used is metallic. As mentioned, it stabilizes the joint allowing the injured ligaments to heal. However, this fixation does not completely permit the physiological reciprocal movement between the fibula and tibia. It often requires removal, with the associated increased risk of complications (infections and recurrence of diastasis) and higher costs. For these reasons, bioabsorbable devices have been developed, first produced in polyglycolic acid, subsequently in polylactic acid and currently in polylevolactic acid. These devices gradually reabsorb by hydrolysis, thus allowing a progressive recovery of the syndesmosis function[85]. The bioabsorbable screw has shown the same efficacy in maintaining stability, and the incidence of rupture and infection is similar to that of



Figure 9 Type C ankle fracture and dislocation. A: Preoperative X-rays; B: Postoperative X-rays; C: Radiographs performed 3 mo after trauma with breakage of the proximal intersyndesmotic screw (arrow).

the metal one. The reoperation rate is lower, and in about 13% of cases there is a foreign body reaction that can last for months. In some cases, it can lead to a second intervention[86,87].

One or two 3.5 mm or 4.5 mm diameter screws can be used, and there are no statistically significant differences in short and long-term outcomes and functionality between these two diameters. Biomechanical studies have shown that the breaking load is higher in 4.5 mm screws and that the presence of two screws ensures greater biomechanical stability. Nevertheless, these differences have no clinical significance because it has been demonstrated that the single 3.5 mm diameter screw is able to maintain adequate stability *in vivo*[88,89].

Tricortical and quadricortical screws have been compared in terms of stability and outcomes. Tricortical fixation is a less rigid system for stabilizing a syndesmosis, and it recreates a more similar syndesmosis biomechanism with less breakage risk. However, quadricortical fixation, with one or two screws, is characterized by less occurrence of syndesmotic widening during the healing period, although it is more rigid. In any case, fixation after reduction should be performed 2-4 cm above and parallel to the joint line and perpendicular to the distal tibiofibular, from posterior to anterior through the fibula and tibia with an inclination of 25°-30°[90,91].

The influence on the short and long-term outcomes of the foot position to be maintained during fixation is still unclear. Olerud *et al*[92] suggested placement of the syndesmotic screw with the foot in dorsiflexion to avoid limitations of this movement. Other authors instead have recently demonstrated that the most important aspect of fixation is anatomic reduction of the syndesmosis, and dorsiflexion during fixation has less importance. They concluded that foot position does not influence long-term outcomes[93]. However, the possibility of excessive compression and, consequently of a limitation of dorsiflexion, is described, but it is observed when the screw is tightened too hard, or it is attributable to the excessive force applied with the reduction clamp at the time of positioning the screw, which does not depend on the foot position[94].

The optimal force that should be applied with a clamp to reduce the syndesmosis is currently unknown. Fluoroscopy is typically used for intraoperative assessment of the reduction of the syndesmosis. However, the use of other intraoperative imaging studies have been evaluated (intraoperative CT). Obtaining intraoperative mortise and perfect lateral fluoroscopic views of the talar dome of both ankle before fixation could help in determining the relationship between the fibula and tibia in the ankle and to reduce the risk of overcompression[93].

The real need for the removal of the intersyndesmotric screw is a topic that has been the subject of debate for years. The authors that suggest to always remove the screw maintain that otherwise the biomechanics of the ankle joint and its dorsiflexion could be hindered, and the load could therefore lead to the breaking or mobilization of the screw[95]. Other authors instead have shown that patients with retained or broken devices do not show significant differences in terms of outcomes and complications compared to those with intact ones[96]. Furthermore, their removal, especially in patients who present a delayed healing of the surgical wound following the first operation, is subject to a higher rate of infection. For these reasons, the percentage of patients in which the screw has not been removed has passed from 8% in 2004, to 14% in 2008, to over 35% in 2010[97], and as a consequence the routine screw removal is not recommended now. However, this procedure may be indicated in cases of intolerance, poor joint reduction and when it is indicated to remove the synthesis hardware of the associated malleolar fracture[98]. In these cases, extraction should be scheduled no earlier than 8 wk (preferably 10-12 wk) as it has been amply demonstrated that removal within the first 8 wk is burdened by a higher incidence of loss of reduction and recurrence of diastasis[99].

In any case, one of the main problems in screw maintenance cases is the management of the patient in the postoperative period. In many cases, the patient struggles to accept the idea of being able to weight bear on a retained screw, and similarly he/she does not accept the idea of maintaining a screw that is broken (although this does not involve any risk)[100]. Consequently, if the surgeon decides to maintain the screw, it is therefore necessary to adequately explain to the patient the risk of rupture of the screw and that any breakage does not lead to more complications.

To overcome the excessive joint stiffness and the increased stress on the interosseous membrane that a static stabilizer causes, an alternative system of dynamic stabilization with an implanted suture-button device has been developed. It consists of a nonabsorbable synthetic suture between two metallic buttons implanted across the DTS[4,25], and it is characterized by less risk of hardware pain and recurrent syndesmotric diastasis, quicker return to mobility, maintenance of physiologic movement while retaining reduction, earlier rehabilitation and no need for removal[101,102]. It has also been shown that the position of the foot at the time of implant fixation does not affect stability, postoperative range of motion and outcomes[103]. Several literature reviews and meta-analyses confirmed these significant clinical advantages, but sometimes a greater residual diastasis is described. Instead, syndesmosis screws provide more rigid assembly but a higher rate of poor reduction (12%-39%), ablation (40%-50%), breakage (up to 30%) and more local discomfort[104]. Nevertheless, there is no agreement on whether DF methods are superior to SF methods in terms of long-term functional outcomes, change in range of motion, complication rates and incidence of reoperation[26,27,105].

Equally important is the postoperative treatment. To prevent the equinus of the foot, the ankle is kept at rest with the foot at 90° by means of a plaster splint applied posteriorly. The patient is encouraged to move the toes early. If the wounds are satisfactory, then passive and active mobilization of the ankle under the control of the therapist can begin after 24-48 h. Once active dorsiflexion is achieved, the decision to leave the ankle free or to keep it still with the plaster cast depends on various factors, such as the stability of the internal fixation obtained by the surgeon, the patient's general mobility and the prospects for adhesion to the chosen postoperative regimen. It has been shown that long-term results are similar with both the immobilized and the free ankle, during the first 6 wk after surgery[106]. Loading decisions, with or without plaster, also largely depend on the stability of the fixation obtained and the patient's cooperation. Most authors recommend avoiding weight-bearing for 8-10 wk whether the screw is removed or left in place[15].

AUTHORS PREFERRED SURGICAL METHOD

Patients are positioned with a tourniquet applied, and the surgical procedure is done under fluoroscopic control. In the cases of trimalleolar fractures, we initially stabilize and restore the fibula length and consequently synthesize the PM and finally the tibia. We prefer open reduction of posterior malleolar fragment through a posterolateral approach in types II and IV and a posteromedial approach in type III fractures according to Bartoníček classification. In selected cases, when reduction and fixation of both posterior fragments is difficult to achieve, we have opted for a combined posteromedial and posterolateral approach (Figure 10).

The choice of the fixation devices (screws or plates) depends on the intraoperative characteristics of the fractures and the quality of the bone. The decision to stabilize the DTS depends on the positivity of the modified Cotton test. We prefer the use of reduction clamp instead of bone hook because of its minor aggressiveness towards the soft tissues between tibia and fibula.

We obtain DTS fixation with one tricortical 3.5 mm screw that is positioned approximately 2.5-3.0 cm proximal and parallel to the tibiotalar joint with the foot in dorsiflexion at 90° (Figure 11).

In most cases the simple screwing determines the closure of the DTS. If this does not happen, then we first try to reduce the diastasis with forceps before placing the screw. If despite this maneuver the DTS reduction is not sufficient, then we perform a medial surgical exploration to verify if the deltoid ligament is detected between the malleolus and the talus.

In the immediate postoperative period, a plaster cast with the foot at 90° is applied for 48 h. After this period, if the stability of the fixation obtained is good, the wound healing is positive and the patient is collaborative, then the cast can be replaced by a removable bivalve ankle brace with the aim to begin early active and passive progressive mobilization under the control of the therapist. We recommend avoiding weight-bearing for 8-10 wk whether the screw is removed or left in place.

Until 5 years ago, the authors always removed the screw after 8-10 wk from surgery. Based on recent findings in the literature, they currently rarely remove this device. The patient is informed regarding the possibility of screw rupture and that this occurrence does not compromise the long-term functional result.

Intolerance, pain, poor reduction obtained and necessity to remove malleolar fracture hardware does lead us to consider this second surgery. Screw removal is then performed under local anesthesia and fluoroscopic control. Antibiotic prophylaxis with first generation cephalosporin (cefazoline) is always administered.

CONCLUSION

The stability and correct anatomy of the DTS is essential for normal biomechanics of the ankle. Syndesmosis injuries occur following spraining trauma especially in external rotation, and they can be isolated or, more frequently, associated with malleolar fractures. In the latter case, specific clinical tests for the evaluation of syndesmosis are not reliable due to the important painful symptoms of the fracture. Consequently, preoperative imaging and specific intraoperative tests, performed after completing the synthesis of the associated malleolar fractures, are essential for the definitive diagnosis and indication for stabilization of the DTS. In this context, the Danis-Weber radiological classification and the modified Cotton test are the most used and complete.

Furthermore, especially if the images obtained by radiography are not conclusive, preoperative CT is mandatory in order to better evaluate the size, shape and location of fracture fragments and to assess the stability of the tibiotalar joint through more precise measurements and the integrity of the fibular notch[63,74,76,107]. In those cases where after fracture stabilization the DTS remains unstable, the different treatment options include SF and DF techniques. To this day, the intersyndesmosis screw remains the most widely used method of stabilization.

Despite the numerous anatomical, biomechanical and comparative studies performed, there is still a wide debate as to which surgical technique is the best. From the analysis of the literature, it emerged that the type, size and number of screws, the number of cortices to cross, the distance from the tibial plafond and the position of the foot during fixation do not significantly affect the short and long-term results.

It will be a choice of the surgeon in accordance with the patient whether to remove or maintain the screw. The removal is indicated in those cases characterized by

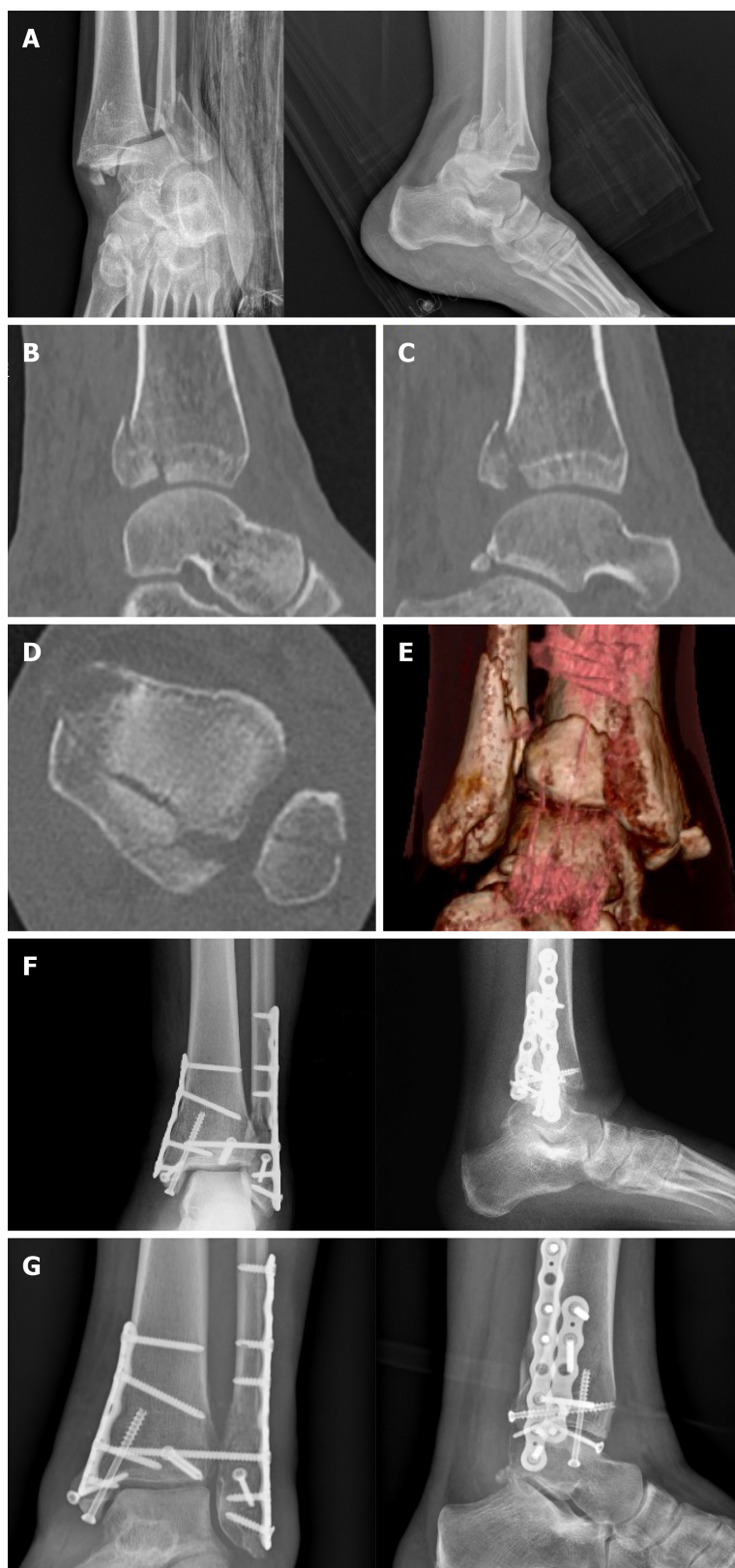


Figure 10 Trimalleolar right ankle fracture associated with dislocation. A: Preoperative X-rays; B and C: Computed tomography sagittal views with posterior malleolar fracture [tibial portion (B) and peroneal portion (C)]; D: Computed tomography axial view; E: Three dimensional computed tomography; F: Postoperative radiographs after fixation of the fibula and of the lateral part of the posterior malleolus with a P-A screw through a posterolateral approach and of the medial malleolus and of the tibial part of the posterior malleolus through a posteromedial approach (plates and screws); G: X-rays 8 mo following surgery with consolidation.

intolerance, pain, malreduction or if it is necessary to remove the hardware implanted for associated malleolar fractures. In this regard, it is important to emphasize that screw rupture does not negatively influence the clinical results. If removal is

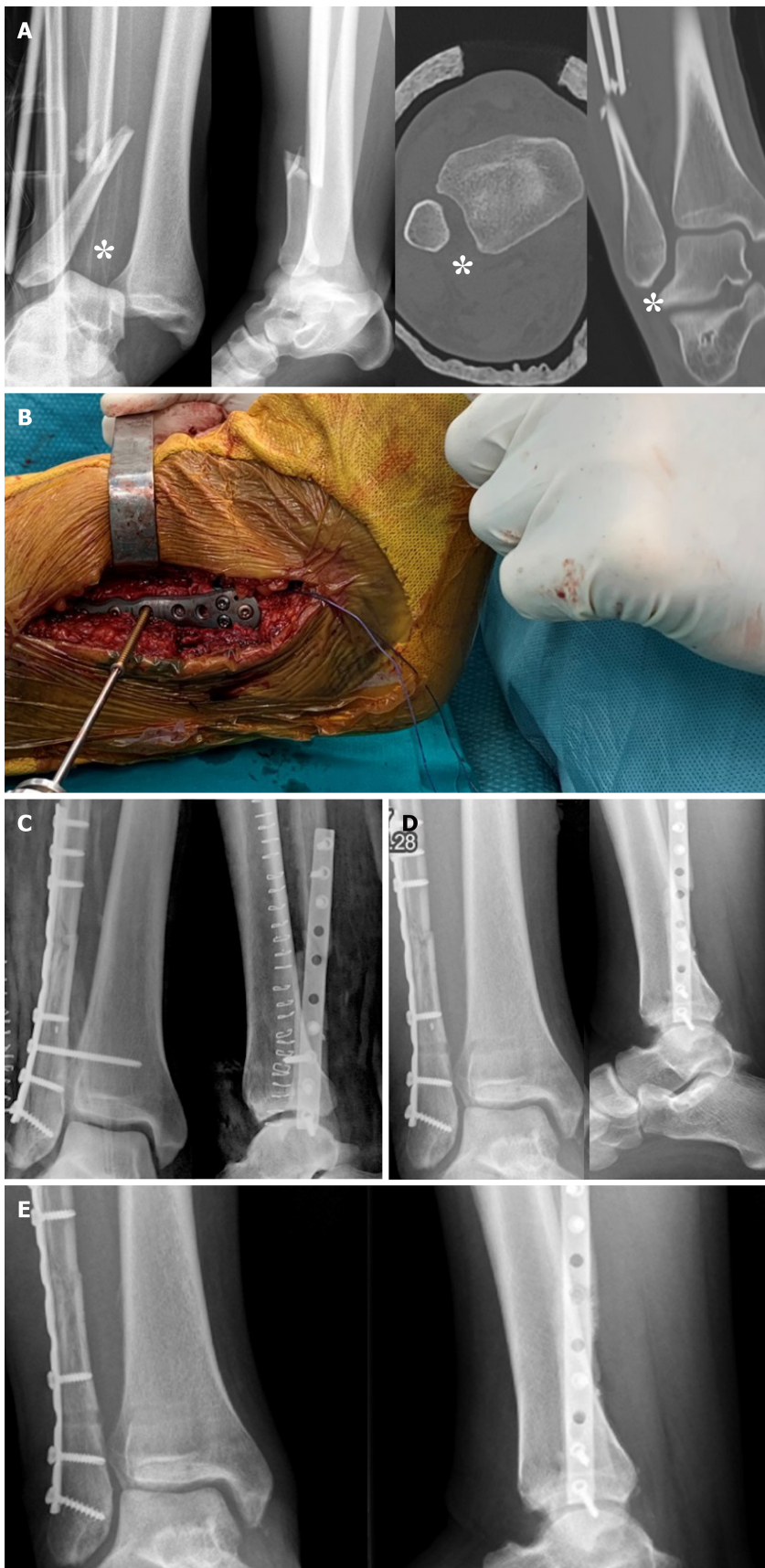


Figure 11 Type C ankle fracture. A: Preoperative X-rays and computed tomography performed after closed reduction with diastasis (asterisks); B: Intraoperative positioning of the 3.5 mm intersyndesmotic screw with the foot positioned at 90° of dorsiflexion; C: Postoperative radiographs; D: Removal of the screw 2 mo after surgery; E: Views 6 mo after trauma with fracture consolidated.

performed, then it must be scheduled after at least 8 wk to avoid the risk of recurrence of the diastasis. However, it is well established that in this type of fixation the possibility of screw loosening, breakage, discomfort, the need for a reoperation for screw removal and the risk of late diastasis after early removal should be considered.

These drawbacks seem to be canceled by dynamic fixation with the endobutton, which has become increasingly popular as it allows a more physiological articular movement, early rehabilitation, satisfactory functional outcomes and no requirement for implant removal. Nevertheless, there is no unique consensus on whether DF methods are superior to the static ones.

Another frequent complication of DTS stabilization associated with fractures is malreduction. This is the consequence of an inadequate closure of the malleolar forceps, of an abnormal anteriorization or posteriorization of the fibula with respect to the tibia or of a rotational fibular malalignment. For this reason, if the simple screwing does not close the DTS, then the authors suggest trying to reduce the diastasis with forceps before placing the screw, considering that an excessive tension of the forceps can favor the anterior translation of the fibula. If despite this maneuver the DTS reduction is not sufficient, then they perform a medial surgical exploration to verify if the deltoid ligament is detected between the malleolus and the talus. In doubtful cases, a bilateral postoperative CT is helpful for evaluating the correct reduction.

In addition to malreduction, the development of heterotopic ossification and more rarely tibiofibular synostosis is reported. Functional consequences of these complications are questionable and often no special treatments are needed due to real symptoms[108]. Alternatively, in rarer cases persistent pain related to heterotopic ossification and synostosis required surgical treatment[67].

Finally, the authors are confident that postoperative care is another important aspect for positive outcomes. They agree with most authors that loading is not recommended until the screw is removed, or if it is not removed, then for 8-10 wk after surgery, depending on the stability of the synthesis obtained and the patient's characteristics. Active and passive exercises of the ankle are allowed immediately after surgery.

In conclusion, patients with unstable injuries require surgical stabilization [15,95,105,109]. The aim of surgical treatment is to restore joint congruency and to maintain the stability of the syndesmosis until the ligaments have healed. Satisfactory results depend on a correct management from diagnosis to treatment. SF and DF systems have similar long-term clinical and radiological outcomes.

REFERENCES

- 1 Yuen CP, Lui TH. Distal Tibiofibular Syndesmosis: Anatomy, Biomechanics, Injury and Management. *Open Orthop J* 2017; **11**: 670-677 [PMID: 29081864 DOI: 10.2174/1874325001711010670]
- 2 Kocadal O, Yucel M, Pepe M, Aksahin E, Aktekin CN. Evaluation of Reduction Accuracy of Suture-Button and Screw Fixation Techniques for Syndesmotic Injuries. *Foot Ankle Int* 2016; **37**: 1317-1325 [PMID: 27535086 DOI: 10.1177/1071100716661221]
- 3 Lubberts B, Guss D, Vopat BG, Johnson AH, van Dijk CN, Lee H, DiGiovanni CW. The arthroscopic syndesmotic assessment tool can differentiate between stable and unstable ankle syndesmoses. *Knee Surg Sports Traumatol Arthrosc* 2020; **28**: 193-201 [PMID: 30367196 DOI: 10.1007/s00167-018-5229-3]
- 4 Gan K, Xu D, Hu K, Wu W, Shen Y. Dynamic fixation is superior in terms of clinical outcomes to static fixation in managing distal tibiofibular syndesmosis injury. *Knee Surg Sports Traumatol Arthrosc* 2020; **28**: 270-280 [PMID: 31422424 DOI: 10.1007/s00167-019-05659-0]
- 5 Brosky T, Nyland J, Nitz A, Caborn DN. The ankle ligaments: consideration of syndesmotic injury and implications for rehabilitation. *J Orthop Sports Phys Ther* 1995; **21**: 197-205 [PMID: 7773271 DOI: 10.2519/jospt.1995.21.4.197]
- 6 Lin CF, Gross ML, Weinhold P. Ankle syndesmosis injuries: anatomy, biomechanics, mechanism of injury, and clinical guidelines for diagnosis and intervention. *J Orthop Sports Phys Ther* 2006; **36**: 372-384 [PMID: 16776487 DOI: 10.2519/jospt.2006.2.195]
- 7 Pogliacomì F, Artoni C, Riccoboni S, Calderazzi F, Vaienti E, Ceccarelli F. The management of syndesmotic screw in ankle fractures. *Acta Biomed* 2018; **90**: 146-149 [PMID: 30715014 DOI: 10.23750/abm.v90i1-S.8015]
- 8 Kemler E, van de Port I, Valkenberg H, Hoes AW, Backx FJ. Ankle injuries in the Netherlands: Trends over 10-25 years. *Scand J Med Sci Sports* 2015; **25**: 331-337 [PMID: 24840653 DOI: 10.1111/sms.12248]
- 9 van Staa TP, Dennison EM, Leufkens HG, Cooper C. Epidemiology of fractures in England and Wales. *Bone* 2001; **29**: 517-522 [PMID: 11728921 DOI: 10.1016/s8756-3282(01)00614-7]
- 10 van Zuuren WJ, Schepers T, Beumer A, Siersevelt I, van Noort A, van den Bekerom MPJ. Acute

- syndesmotic instability in ankle fractures: A review. *Foot Ankle Surg* 2017; **23**: 135-141 [PMID: 28865579 DOI: 10.1016/j.fas.2016.04.001]
- 11 **Kennedy JG**, Soffe KE, Dalla Vedova P, Stephens MM, O'Brien T, Walsh MG, McManus F. Evaluation of the syndesmotic screw in low Weber C ankle fractures. *J Orthop Trauma* 2000; **14**: 359-366 [PMID: 10926245 DOI: 10.1097/00005131-200006000-00010]
- 12 **Xie L**, Xie H, Wang J, Chen C, Zhang C, Chen H, Zheng W. Comparison of suture button fixation and syndesmotic screw fixation in the treatment of distal tibiofibular syndesmosis injury: A systematic review and meta-analysis. *Int J Surg* 2018; **60**: 120-131 [PMID: 30439535 DOI: 10.1016/j.ijsu.2018.11.007]
- 13 **Kim JH**, Gwak HC, Lee CR, Choo HJ, Kim JG, Kim DY. A Comparison of Screw Fixation and Suture-Button Fixation in a Syndesmosis Injury in an Ankle Fracture. *J Foot Ankle Surg* 2016; **55**: 985-990 [PMID: 27449525 DOI: 10.1053/j.jfas.2016.05.002]
- 14 **Schepers T**. Acute distal tibiofibular syndesmosis injury: a systematic review of suture-button vs syndesmotic screw repair. *Int Orthop* 2012; **36**: 1199-1206 [PMID: 22318415 DOI: 10.1007/s00264-012-1500-2]
- 15 **Lubberts B**, van Dijk PAD, Donovan N, van Dijk CN, Calder JD. Stable and unstable grade II syndesmotic injuries require different treatment strategies and vary in functional outcomes: a systematic review. *J Isakos* 2016; **1**: 192-197
- 16 **Wang C**, Ma X, Wang X, Huang J, Zhang C, Chen L. Internal fixation of distal tibiofibular syndesmotic injuries: a systematic review with meta-analysis. *Int Orthop* 2013; **37**: 1755-1763 [PMID: 23873173 DOI: 10.1007/s00264-013-1999-x]
- 17 **Wikerøy AK**, Høiness PR, Andreassen GS, Hellund JC, Madsen JE. No difference in functional and radiographic results 8.4 years after quadricortical compared with tricortical syndesmosis fixation in ankle fractures. *J Orthop Trauma* 2010; **24**: 17-23 [PMID: 20035173 DOI: 10.1097/BOT.0b013e3181bedca1]
- 18 **Willmott HJ**, Singh B, David LA. Outcome and complications of treatment of ankle diastasis with tightrope fixation. *Injury* 2009; **40**: 1204-1206 [PMID: 19625020 DOI: 10.1016/j.injury.2009.05.008]
- 19 **Schepers T**, Van Lieshout EM, Van der Linden HJ, De Jong VM, Goslings JC. Aftercare following syndesmotic screw placement: a systematic review. *J Foot Ankle Surg* 2013; **52**: 491-494 [PMID: 23628194 DOI: 10.1053/j.jfas.2013.03.032]
- 20 **Bell DP**, Wong MK. Syndesmotic screw fixation in Weber C ankle injuries--should the screw be removed before weight bearing? *Injury* 2006; **37**: 891-898 [PMID: 16630621 DOI: 10.1016/j.injury.2006.02.003]
- 21 **Magan A**, Golano P, Maffulli N, Khanduja V. Evaluation and management of injuries of the tibiofibular syndesmosis. *Br Med Bull* 2014; **111**: 101-115 [PMID: 25190761 DOI: 10.1093/bmb/ldu020]
- 22 **Schepers T**. To retain or remove the syndesmotic screw: a review of literature. *Arch Orthop Trauma Surg* 2011; **131**: 879-883 [PMID: 21161662 DOI: 10.1007/s00402-010-1225-x]
- 23 **Schepers T**, Van Lieshout EM, de Vries MR, Van der Elst M. Complications of syndesmotic screw removal. *Foot Ankle Int* 2011; **32**: 1040-1044 [PMID: 22338952 DOI: 10.3113/FAI.2011.1040]
- 24 **van den Bekerom MP**, Kloen P, Luitse JS, Raaymakers EL. Complications of distal tibiofibular syndesmotic screw stabilization: analysis of 236 patients. *J Foot Ankle Surg* 2013; **52**: 456-459 [PMID: 23632070 DOI: 10.1053/j.jfas.2013.03.025]
- 25 **Laflamme M**, Belzile EL, Bédard L, van den Bekerom MP, Glazebrook M, Pelet S. A prospective randomized multicenter trial comparing clinical outcomes of patients treated surgically with a static or dynamic implant for acute ankle syndesmosis rupture. *J Orthop Trauma* 2015; **29**: 216-223 [PMID: 25260059 DOI: 10.1097/BOT.0000000000000245]
- 26 **Inge SY**, Pull Ter Gunne AF, Aarts CAM, Bemelman M. A systematic review on dynamic vs static distal tibiofibular fixation. *Injury* 2016; **47**: 2627-2634 [PMID: 27788927 DOI: 10.1016/j.injury.2016.09.032]
- 27 **Zhang P**, Liang Y, He J, Fang Y, Chen P, Wang J. A systematic review of suture-button vs syndesmotic screw in the treatment of distal tibiofibular syndesmosis injury. *BMC Musculoskelet Disord* 2017; **18**: 286 [PMID: 28676078 DOI: 10.1186/s12891-017-1645-7]
- 28 **Hermans JJ**, Beumer A, de Jong TA, Kleinrensink GJ. Anatomy of the distal tibiofibular syndesmosis in adults: a pictorial essay with a multimodality approach. *J Anat* 2010; **217**: 633-645 [PMID: 21108526 DOI: 10.1111/j.1469-7580.2010.01302.x]
- 29 **Schnetzke M**, Vetter SY, Beisemann N, Swartman B, Grützner PA, Franke J. Management of syndesmotic injuries: What is the evidence? *World J Orthop* 2016; **7**: 718-725 [PMID: 27900268 DOI: 10.5312/wjo.v7.i11.718]
- 30 **Zwipp H**, Rammelt S. [Anatomical reconstruction of chronically instable Lisfranc's ligaments]. *Unfallchirurg* 2014; **117**: 791-797 [PMID: 25182235 DOI: 10.1007/s00113-014-2600-9]
- 31 **Miller AN**, Paul O, Boraiah S, Parker RJ, Helfet DL, Lorch DG. Functional outcomes after syndesmotic screw fixation and removal. *J Orthop Trauma* 2010; **24**: 12-16 [PMID: 20035172 DOI: 10.1097/BOT.0b013e3181c6e199]
- 32 **Espinosa N**, Smerek JP, Myerson MS. Acute and chronic syndesmosis injuries: pathomechanisms, diagnosis and management. *Foot Ankle Clin* 2006; **11**: 639-657 [PMID: 16971254 DOI: 10.1016/j.fcl.2006.07.006]
- 33 **Golanò P**, Mariani PP, Rodríguez-Niedenfuhr M, Mariani PF, Ruano-Gil D. Arthroscopic anatomy

- of the posterior ankle ligaments. *Arthroscopy* 2002; **18**: 353-358 [PMID: [11951192](#) DOI: [10.1053/jars.2002.32318](#)]
- 34 **Miyamoto W**, Takao M. Management of chronic disruption of the distal tibiofibular syndesmosis. *World J Orthop* 2011; **2**: 1-6 [PMID: [22474625](#) DOI: [10.5312/wjo.v2.i1.1](#)]
 - 35 **Hamilton WG**. Foot and ankle injuries in dancers. *Clin Sports Med* 1988; **7**: 143-173 [PMID: [2900693](#)]
 - 36 **Oh CS**, Won HS, Hur MS, Chung IH, Kim S, Suh JS, Sung KS. Anatomic variations and MRI of the intermalleolar ligament. *AJR Am J Roentgenol* 2006; **186**: 943-947 [PMID: [16554561](#) DOI: [10.2214/AJR.04.1784](#)]
 - 37 **Boonthathip M**, Chen L, Trudell DJ, Resnick DL. Tibiofibular syndesmosis ligaments: MR arthrography in cadavers with anatomic correlation. *Radiology* 2010; **254**: 827-836 [PMID: [20177095](#) DOI: [10.1148/radiol.09090624](#)]
 - 38 **Elgafy H**, Semaan HB, Blessinger B, Wassef A, Ebraheim NA. Computed tomography of normal distal tibiofibular syndesmosis. *Skeletal Radiol* 2010; **39**: 559-564 [PMID: [19830423](#) DOI: [10.1007/s00256-009-0809-4](#)]
 - 39 **Beumer A**, Valstar ER, Garling EH, Niesing R, Ginai AZ, Ranstam J, Swierstra BA. Effects of ligament sectioning on the kinematics of the distal tibiofibular syndesmosis: a radiostereometric study of 10 cadaveric specimens based on presumed trauma mechanisms with suggestions for treatment. *Acta Orthop* 2006; **77**: 531-540 [PMID: [16819696](#) DOI: [10.1080/17453670610012557](#)]
 - 40 **Peter RE**, Harrington RM, Henley MB, Tencer AF. Biomechanical effects of internal fixation of the distal tibiofibular syndesmosis joint: comparison of two fixation techniques. *J Orthop Trauma* 1994; **8**: 215-219 [PMID: [8027890](#) DOI: [10.1097/00005131-199406000-00006](#)]
 - 41 **Ogilvie-Harris DJ**, Reed SC, Hedman TP. Disruption of the ankle syndesmosis: biomechanical study of the ligamentous restraints. *Arthroscopy* 1994; **10**: 558-560 [PMID: [7999167](#) DOI: [10.1016/s0749-8063\(05\)80014-3](#)]
 - 42 **Clanton TO**, Williams BT, Backus JD, Dorman GJ, Liechti DJ, Whitlow SR, Saroki AJ, Turnbull TL, LaPrade RF. Biomechanical Analysis of the Individual Ligament Contributions to Syndesmosis Stability. *Foot Ankle Int* 2017; **38**: 66-75 [PMID: [27681857](#) DOI: [10.1177/1071100716666277](#)]
 - 43 **Xenos JS**, Hopkinson WJ, Mulligan ME, Olson EJ, Popovic NA. The tibiofibular syndesmosis. Evaluation of the ligamentous structures, methods of fixation, and radiographic assessment. *J Bone Joint Surg Am* 1995; **77**: 847-856 [PMID: [7782357](#) DOI: [10.2106/00004623-199506000-00005](#)]
 - 44 **Ramsey PL**, Hamilton W. Changes in tibiotalar area of contact caused by lateral talar shift. *J Bone Joint Surg Am* 1976; **58**: 356-357 [PMID: [1262367](#)]
 - 45 **Burns WC 2nd**, Prakash K, Adelaar R, Beaudoin A, Krause W. Tibiotalar joint dynamics: indications for the syndesmosis screw--a cadaver study. *Foot Ankle* 1993; **14**: 153-158 [PMID: [8491430](#) DOI: [10.1177/107110079301400308](#)]
 - 46 **Muller ME**, Nazarian S, Koch P, Schatzker J. The Comprehensive Classification of Fractures of Long Bones. 1 st ed. Berlin: Springer, 1990: 148-191
 - 47 **Tartaglione JP**, Rosenbaum AJ, Abousayed M, DiPreta JA. Classifications in Brief: Lauge-Hansen Classification of Ankle Fractures. *Clin Orthop Relat Res* 2015; **473**: 3323-3328 [PMID: [25900357](#) DOI: [10.1007/s11999-015-4306-x](#)]
 - 48 **Lauge-Hansen N**. Fractures of the ankle. II. Combined experimental-surgical and experimental-roentgenologic investigations. *Arch Surg* 1950; **60**: 957-985 [PMID: [15411319](#)]
 - 49 **Okanobo H**, Khurana B, Sheehan S, Duran-Mendicuti A, Arianjam A, Ledbetter S. Simplified diagnostic algorithm for Lauge-Hansen classification of ankle injuries. *Radiographics* 2012; **32**: E71-E84 [PMID: [22411951](#) DOI: [10.1148/rg.322115017](#)]
 - 50 **Williams GN**, Jones MH, Amendola A. Syndesmosis ankle sprains in athletes. *Am J Sports Med* 2007; **35**: 1197-1207 [PMID: [17519439](#) DOI: [10.1177/0363546507302545](#)]
 - 51 **Tourné Y**, Molinier F, Andrieu M, Porta J, Barbier G. Diagnosis and treatment of tibiofibular syndesmosis lesions. *Orthop Traumatol Surg Res* 2019; **105**: S275-S286 [PMID: [31594732](#) DOI: [10.1016/j.otsr.2019.09.014](#)]
 - 52 **Hopkinson WJ**, St Pierre P, Ryan JB, Wheeler JH. Syndesmosis sprains of the ankle. *Foot Ankle* 1990; **10**: 325-330 [PMID: [2113510](#) DOI: [10.1177/107110079001000607](#)]
 - 53 **Boytim MJ**, Fischer DA, Neumann L. Syndesmosis ankle sprains. *Am J Sports Med* 1991; **19**: 294-298 [PMID: [1907807](#) DOI: [10.1177/036354659101900315](#)]
 - 54 **Mak MF**, Gartner L, Pearce CJ. Management of syndesmosis injuries in the elite athlete. *Foot Ankle Clin* 2013; **18**: 195-214 [PMID: [23707173](#) DOI: [10.1016/j.fcl.2013.02.002](#)]
 - 55 **Mulligan EP**. Evaluation and management of ankle syndesmosis injuries. *Phys Ther Sport* 2011; **12**: 57-69 [PMID: [21496767](#) DOI: [10.1016/j.ptsp.2011.03.001](#)]
 - 56 **Harper MC**, Keller TS. A radiographic evaluation of the tibiofibular syndesmosis. *Foot Ankle* 1989; **10**: 156-160 [PMID: [2613128](#) DOI: [10.1177/107110078901000308](#)]
 - 57 **Pettrone FA**, Gail M, Pee D, Fitzpatrick T, Van Herpe LB. Quantitative criteria for prediction of the results after displaced fracture of the ankle. *J Bone Joint Surg Am* 1983; **65**: 667-677 [PMID: [6406511](#)]
 - 58 **Beumer A**, van Hemert WL, Niesing R, Entius CA, Ginai AZ, Mulder PG, Swierstra BA. Radiographic measurement of the distal tibiofibular syndesmosis has limited use. *Clin Orthop Relat Res* 2004; **(423)**: 227-234 [PMID: [15232454](#) DOI: [10.1097/01.blo.0000129152.81015.ad](#)]
 - 59 **Carrozzo M**, Vicenti G, Pesce V, Solarino G, Rifino F, Spinarelli A, Campagna C, Bizzoca D, Moretti B. Beyond the pillars of the ankle: A prospective randomized CT analysis of syndesmosis'

- injuries in Weber B and C type fractures. *Injury* 2018; **49** Suppl 3: S54-S60 [PMID: 30301557 DOI: 10.1016/j.injury.2018.10.005]
- 60 **Schoennagel BP**, Karul M, Avanesov M, Bannas P, Gold G, Großterlinden LG, Rupprecht M, Adam G, Yamamura J. Isolated syndesmotic injury in acute ankle trauma: comparison of plain film radiography with 3T MRI. *Eur J Radiol* 2014; **83**: 1856-1861 [PMID: 25043987 DOI: 10.1016/j.ejrad.2014.06.034]
 - 61 **Pneumaticos SG**, Noble PC, Chatziioannou SN, Trevino SG. The effects of rotation on radiographic evaluation of the tibiofibular syndesmosis. *Foot Ankle Int* 2002; **23**: 107-111 [PMID: 11858329 DOI: 10.1177/107110070202300205]
 - 62 **Grath GB**. Widening of the ankle mortise. A clinical and experimental study. *Acta Chir Scand Suppl* 1960; **263** Suppl: 1-88 [PMID: 13707964]
 - 63 **Bartoniček J**, Rammelt S, Kostlivý K, Vaněček V, Klika D, Trešl I. Anatomy and classification of the posterior tibial fragment in ankle fractures. *Arch Orthop Trauma Surg* 2015; **135**: 505-516 [PMID: 25708027 DOI: 10.1007/s00402-015-2171-4]
 - 64 **Haraguchi N**, Haruyama H, Toga H, Kato F. Pathoanatomy of posterior malleolar fractures of the ankle. *J Bone Joint Surg Am* 2006; **88**: 1085-1092 [PMID: 16651584 DOI: 10.2106/JBJS.E.00856]
 - 65 **Han SH**, Lee JW, Kim S, Suh JS, Choi YR. Chronic tibiofibular syndesmosis injury: the diagnostic efficiency of magnetic resonance imaging and comparative analysis of operative treatment. *Foot Ankle Int* 2007; **28**: 336-342 [PMID: 17371657 DOI: 10.3113/FAI.2007.0336]
 - 66 **Ryan LP**, Hills MC, Chang J, Wilson CD. The lambda sign: a new radiographic indicator of latent syndesmosis instability. *Foot Ankle Int* 2014; **35**: 903-908 [PMID: 25037708 DOI: 10.1177/1071100714543646]
 - 67 **Fort NM**, Aiyer AA, Kaplan JR, Smyth NA, Kadakia AR. Management of acute injuries of the tibiofibular syndesmosis. *Eur J Orthop Surg Traumatol* 2017; **27**: 449-459 [PMID: 28391516 DOI: 10.1007/s00590-017-1956-2]
 - 68 **Jiang KN**, Schulz BM, Tsui YL, Gardner TR, Greisberg JK. Comparison of radiographic stress tests for syndesmotic instability of supination-external rotation ankle fractures: a cadaveric study. *J Orthop Trauma* 2014; **28**: e123-e127 [PMID: 24296599 DOI: 10.1097/BOT.000000000000010]
 - 69 **Beumer A**, Campo MM, Niesing R, Day J, Kleinrensink GJ, Swierstra BA. Screw fixation of the syndesmosis: a cadaver model comparing stainless steel and titanium screws and three and four cortical fixation. *Injury* 2005; **36**: 60-64 [PMID: 15589915 DOI: 10.1016/j.injury.2004.05.024]
 - 70 **Burwell HN**, Charnley AD. The treatment of displaced fractures at the ankle by rigid internal fixation and early joint movement. *J Bone Joint Surg Br* 1965; **47**: 634-660 [PMID: 5846764]
 - 71 **Hong CC**, Nashi N, Prosad Roy S, Tan KJ. Impact of trimalleolar ankle fractures: how do patients fare post-operatively? *Foot Ankle Surg* 2014; **20**: 48-51 [PMID: 24480500 DOI: 10.1016/j.fas.2013.10.001]
 - 72 **Drijfhout van Hooff CC**, Verhage SM, Hoogendoorn JM. Influence of fragment size and postoperative joint congruency on long-term outcome of posterior malleolar fractures. *Foot Ankle Int* 2015; **36**: 673-678 [PMID: 25672944 DOI: 10.1177/1071100715570895]
 - 73 **O'Connor TJ**, Mueller B, Ly TV, Jacobson AR, Nelson ER, Cole PA. "A to p" screw vs posterolateral plate for posterior malleolus fixation in trimalleolar ankle fractures. *J Orthop Trauma* 2015; **29**: e151-e156 [PMID: 25162973 DOI: 10.1097/BOT.0000000000000230]
 - 74 **Miller AN**, Carroll EA, Parker RJ, Helfet DL, Lorch DG. Posterior malleolar stabilization of syndesmotic injuries is equivalent to screw fixation. *Clin Orthop Relat Res* 2010; **468**: 1129-1135 [PMID: 19798540 DOI: 10.1007/s11999-009-1111-4]
 - 75 **Warner SJ**, Garner MR, Schottel PC, Hinds RM, Loftus ML, Lorch DG. Analysis of PITFL injuries in rotationally unstable ankle fractures. *Foot Ankle Int* 2015; **36**: 377-382 [PMID: 25367251 DOI: 10.1177/1071100714558845]
 - 76 **Duan X**, Kadakia AR. Operative Treatment of Posterior Malleolar Fractures. *Open Orthop J* 2017; **11**: 732-742 [PMID: 28979587 DOI: 10.2174/1874325001711010732]
 - 77 **Mast JW**, Teipner WA. A reproducible approach to the internal fixation of adult ankle fractures: rationale, technique, and early results. *Orthop Clin North Am* 1980; **11**: 661-679 [PMID: 7413181]
 - 78 **Patel A**, Charles L, Ritchie J. A Complication of Posterior Malleolar Fracture Fixation. *J Foot Ankle Surg* 2016; **55**: 383-386 [PMID: 25907349 DOI: 10.1053/j.jfas.2014]
 - 79 **Ferries JS**, DeCoster TA, Firozbakhsh KK, Garcia JF, Miller RA. Plain radiographic interpretation in trimalleolar ankle fractures poorly assesses posterior fragment size. *J Orthop Trauma* 1994; **8**: 328-331 [PMID: 7965295 DOI: 10.1097/00005131-199408000-00009]
 - 80 **Büchler L**, Tannast M, Bonel HM, Weber M. Reliability of radiologic assessment of the fracture anatomy at the posterior tibial plafond in malleolar fractures. *J Orthop Trauma* 2009; **23**: 208-212 [PMID: 19516096 DOI: 10.1097/BOT.0b013e31819b0b23]
 - 81 **Talbot M**, Steenblock TR, Cole PA. Posterolateral approach for open reduction and internal fixation of trimalleolar ankle fractures. *Can J Surg* 2005; **48**: 487-490 [PMID: 16417056]
 - 82 **Wang L**, Shi ZM, Zhang CQ, Zeng BF. Trimalleolar fracture with involvement of the entire posterior plafond. *Foot Ankle Int* 2011; **32**: 774-781 [PMID: 22049863 DOI: 10.3113/FAI.2011.0774]
 - 83 **Weber M**. Trimalleolar fractures with impaction of the posteromedial tibial plafond: implications for talar stability. *Foot Ankle Int* 2004; **25**: 716-727 [PMID: 15566703 DOI: 10.1177/107110070402501005]
 - 84 **Klammer G**, Kadakia AR, Joos DA, Seybold JD, Espinosa N. Posterior pilon fractures: a

- retrospective case series and proposed classification system. *Foot Ankle Int* 2013; **34**: 189-199 [PMID: 23413057 DOI: 10.1177/1071100712469334]
- 85 **Xie Y**, Cai L, Deng Z, Ran B, Hu C. Absorbable Screws Versus Metallic Screws for Distal Tibiofibular Syndesmosis Injuries: A Meta-Analysis. *J Foot Ankle Surg* 2015; **54**: 663-670 [PMID: 25956019 DOI: 10.1053/j.jfas.2015.03.010]
- 86 **Ahmad J**, Raikin SM, Pour AE, Haytmanek C. Bioabsorbable screw fixation of the syndesmosis in unstable ankle injuries. *Foot Ankle Int* 2009; **30**: 99-105 [PMID: 19254501 DOI: 10.3113/FAI-2009-0099]
- 87 **Sun H**, Luo CF, Zhong B, Shi HP, Zhang CQ, Zeng BF. A prospective, randomised trial comparing the use of absorbable and metallic screws in the fixation of distal tibiofibular syndesmosis injuries: mid-term follow-up. *Bone Joint J* 2014; **96-B**: 548-554 [PMID: 24692626 DOI: 10.1302/0301-620X.96B4.32171]
- 88 **Thompson MC**, Gesink DS. Biomechanical comparison of syndesmosis fixation with 3.5- and 4.5-millimeter stainless steel screws. *Foot Ankle Int* 2000; **21**: 736-741 [PMID: 11023220 DOI: 10.1177/107110070002100904]
- 89 **Hansen M**, Le L, Wertheimer S, Meyer E, Haut R. Syndesmosis fixation: analysis of shear stress via axial load on 3.5-mm and 4.5-mm quadricortical syndesmosis screws. *J Foot Ankle Surg* 2006; **45**: 65-69 [PMID: 16513499 DOI: 10.1053/j.jfas.2005.12.004]
- 90 **Phisitkul P**, Ebinger T, Goetz J, Vaseenon T, Marsh JL. Forceps reduction of the syndesmosis in rotational ankle fractures: a cadaveric study. *J Bone Joint Surg Am* 2012; **94**: 2256-2261 [PMID: 23318616 DOI: 10.2106/JBJS.K.01726]
- 91 **D'Hooghe P**, York PJ, Kaux JF, Hunt KJ. Fixation Techniques in Lower Extremity Syndesmosis Injuries. *Foot Ankle Int* 2017; **38**: 1278-1288 [PMID: 29025279 DOI: 10.1177/1071100717735639]
- 92 **Olerud C**. The effect of the syndesmosis screw on the extension capacity of the ankle joint. *Arch Orthop Trauma Surg* 1985; **104**: 299-302 [PMID: 4091635 DOI: 10.1007/BF00435946]
- 93 **Tornetta P 3rd**, Spoo JE, Reynolds FA, Lee C. Overtightening of the ankle syndesmosis: is it really possible? *J Bone Joint Surg Am* 2001; **83**: 489-492 [PMID: 11315776 DOI: 10.2106/00004623-200104000-00002]
- 94 **Gardner MJ**, Graves ML, Higgins TF, Nork SE. Technical Considerations in the Treatment of Syndesmosis Injuries Associated With Ankle Fractures. *J Am Acad Orthop Surg* 2015; **23**: 510-518 [PMID: 26209146 DOI: 10.5435/JAAOS-D-14-00233]
- 95 **Melvin JS**, Downing KL, Ogilvie CM. A technique for removal of broken cannulated tricortical syndesmosis screws. *J Orthop Trauma* 2008; **22**: 648-651 [PMID: 18827596 DOI: 10.1097/BOT.0b013e3181886f74]
- 96 **Høiness P**, Strømsoe K. Tricortical vs quadricortical syndesmosis fixation in ankle fractures: a prospective, randomized study comparing two methods of syndesmosis fixation. *J Orthop Trauma* 2004; **18**: 331-337 [PMID: 15213497 DOI: 10.1097/00005131-200407000-00001]
- 97 **Bava E**, Charlton T, Thordarson D. Ankle fracture syndesmosis fixation and management: the current practice of orthopedic surgeons. *Am J Orthop (Belle Mead NJ)* 2010; **39**: 242-246 [PMID: 20567742]
- 98 **Walley KC**, Hofmann KJ, Velasco BT, Kwon JY. Removal of Hardware After Syndesmosis Screw Fixation: A Systematic Literature Review. *Foot Ankle Spec* 2017; **10**: 252-257 [PMID: 28027655 DOI: 10.1177/1938640016685153]
- 99 **Hsu YT**, Wu CC, Lee WC, Fan KF, Tseng IC, Lee PC. Surgical treatment of syndesmosis diastasis: emphasis on effect of syndesmosis screw on ankle function. *Int Orthop* 2011; **35**: 359-364 [PMID: 21069524 DOI: 10.1007/s00264-010-1147-9]
- 100 **Delco ML**, Kennedy JG, Bonassar LJ, Fortier LA. Post-traumatic osteoarthritis of the ankle: A distinct clinical entity requiring new research approaches. *J Orthop Res* 2017; **35**: 440-453 [PMID: 27764893 DOI: 10.1002/jor.23462]
- 101 **Latham AJ**, Goodwin PC, Stirling B, Budgen A. Ankle syndesmosis repair and rehabilitation in professional rugby league players: a case series report. *BMJ Open Sport Exerc Med* 2017; **3**: e000175 [PMID: 28761696 DOI: 10.1136/bmjsem-2016-000175]
- 102 **Xu G**, Chen W, Zhang Q, Wang J, Su Y, Zhang Y. Flexible fixation of syndesmosis diastasis using the assembled bolt-tightrope system. *Scand J Trauma Resusc Emerg Med* 2013; **21**: 71 [PMID: 24053432 DOI: 10.1186/1757-7241-21-71]
- 103 **Seitz WH Jr**, Bachner EJ, Abram LJ, Postak P, Polando G, Brooks DB, Greenwald AS. Repair of the tibiofibular syndesmosis with a flexible implant. *J Orthop Trauma* 1991; **5**: 78-82 [PMID: 2023048 DOI: 10.1097/00005131-199103000-00014]
- 104 **Shakoor D**, Osgood GM, Brehler M, Zbijewski WB, de Cesar Netto C, Shafiq B, Orapin J, Thawait GK, Shon LC, Demehri S. Cone-beam CT measurements of distal tibio-fibular syndesmosis in asymptomatic uninjured ankles: does weight-bearing matter? *Skeletal Radiol* 2019; **48**: 583-594 [PMID: 30242446 DOI: 10.1007/s00256-018-3074-6]
- 105 **Sanders D**, Schneider P, Taylor M, Tieszer C, Lawendy AR; Canadian Orthopaedic Trauma Society. Improved Reduction of the Tibiofibular Syndesmosis With TightRope Compared With Screw Fixation: Results of a Randomized Controlled Study. *J Orthop Trauma* 2019; **33**: 531-537 [PMID: 31633643 DOI: 10.1097/BOT.0000000000001559]
- 106 **Onggo JR**, Nambiar M, Phan K, Hickey B, Ambikaipalan A, Hau R, Bedi H. Suture button vs syndesmosis screw constructs for acute ankle diastasis injuries: A meta-analysis and systematic review of randomised controlled trials. *Foot Ankle Surg* 2020; **26**: 54-60 [PMID: 30503612 DOI: 10.1053/j.jfas.2019.03.010]

[10.1016/j.fas.2018.11.008](https://doi.org/10.1016/j.fas.2018.11.008)]

- 107 **Miller AN**, Carroll EA, Parker RJ, Boraiah S, Helfet DL, Lorch DG. Direct visualization for syndesmotic stabilization of ankle fractures. *Foot Ankle Int* 2009; **30**: 419-426 [PMID: [19439142](https://pubmed.ncbi.nlm.nih.gov/19439142/) DOI: [10.3113/FAI-2009-0419](https://doi.org/10.3113/FAI-2009-0419)]
- 108 **Taylor DC**, Englehardt DL, Bassett FH 3rd. Syndesmosis sprains of the ankle. The influence of heterotopic ossification. *Am J Sports Med* 1992; **20**: 146-150 [PMID: [1558241](https://pubmed.ncbi.nlm.nih.gov/1558241/) DOI: [10.1177/036354659202000209](https://doi.org/10.1177/036354659202000209)]
- 109 **Sanders DW**, Tieszer C, Corbett B; Canadian Orthopedic Trauma Society. Operative vs nonoperative treatment of unstable lateral malleolar fractures: a randomized multicenter trial. *J Orthop Trauma* 2012; **26**: 129-134 [PMID: [22330975](https://pubmed.ncbi.nlm.nih.gov/22330975/) DOI: [10.1097/BOT.0b013e3182460837](https://doi.org/10.1097/BOT.0b013e3182460837)]



Published by **Baishideng Publishing Group Inc**
7041 Koll Center Parkway, Suite 160, Pleasanton, CA 94566, USA

Telephone: +1-925-3991568

E-mail: bpgoffice@wjgnet.com

Help Desk: <https://www.f6publishing.com/helpdesk>

<https://www.wjgnet.com>

