

# World Journal of *Radiology*

*World J Radiol* 2021 October 28; 13(10): 314-353



**FRONTIER**

- 314 Current trends and perspectives in interventional radiology for gastrointestinal cancers  
*Reitano E, de'Angelis N, Bianchi G, Laera L, Spiliopoulos S, Calbi R, Memeo R, Inchingolo R*

**MINIREVIEWS**

- 327 COVID-19 pneumonia: A review of typical radiological characteristics  
*Churrua M, Martínez-Besteiro E, Couñago F, Landete P*

**ORIGINAL ARTICLE****Prospective Study**

- 344 Shoulder adhesive capsulitis in cancer patients undergoing positron emission tomography - computed tomography and the association with shoulder pain  
*Hayashi D, Gould E, Shroyer R, van Staalduinen E, Yang J, Mufti M, Huang M*

**ABOUT COVER**

Editorial Board Member of *World Journal of Radiology*, Ozum Tuncyurek, MD, EDIR, Associate Professor, Chief, Department of Radiology, Faculty of Medicine, Near East University, Nicosia 99138, Turkey.  
ozum.tuncyurek@neu.edu.tr

**AIMS AND SCOPE**

The primary aim of *World Journal of Radiology* (WJR, *World J Radiol*) is to provide scholars and readers from various fields of radiology with a platform to publish high-quality basic and clinical research articles and communicate their research findings online.

WJR mainly publishes articles reporting research results and findings obtained in the field of radiology and covering a wide range of topics including state of the art information on cardiopulmonary imaging, gastrointestinal imaging, genitourinary imaging, musculoskeletal imaging, neuroradiology/head and neck imaging, nuclear medicine and molecular imaging, pediatric imaging, vascular and interventional radiology, and women's imaging.

**INDEXING/ABSTRACTING**

The WJR is now abstracted and indexed in Emerging Sources Citation Index (Web of Science), PubMed, PubMed Central, China National Knowledge Infrastructure (CNKI), China Science and Technology Journal Database (CSTJ), and Superstar Journals Database. The 2021 edition of Journal Citation Reports® cites the 2020 Journal Citation Indicator (JCI) for WJR as 0.51.

**RESPONSIBLE EDITORS FOR THIS ISSUE**

Production Editor: Ji-Hong Lin; Production Department Director: Yan-Jie Ma; Editorial Office Director: Jia-Ping Yan.

**NAME OF JOURNAL**

*World Journal of Radiology*

**ISSN**

ISSN 1949-8470 (online)

**LAUNCH DATE**

January 31, 2009

**FREQUENCY**

Monthly

**EDITORS-IN-CHIEF**

Venkatesh Mani

**EDITORIAL BOARD MEMBERS**

<https://www.wjgnet.com/1949-8470/editorialboard.htm>

**PUBLICATION DATE**

October 28, 2021

**COPYRIGHT**

© 2021 Baishideng Publishing Group Inc

**INSTRUCTIONS TO AUTHORS**

<https://www.wjgnet.com/bpg/gerinfo/204>

**GUIDELINES FOR ETHICS DOCUMENTS**

<https://www.wjgnet.com/bpg/gerinfo/287>

**GUIDELINES FOR NON-NATIVE SPEAKERS OF ENGLISH**

<https://www.wjgnet.com/bpg/gerinfo/240>

**PUBLICATION ETHICS**

<https://www.wjgnet.com/bpg/gerinfo/288>

**PUBLICATION MISCONDUCT**

<https://www.wjgnet.com/bpg/gerinfo/208>

**ARTICLE PROCESSING CHARGE**

<https://www.wjgnet.com/bpg/gerinfo/242>

**STEPS FOR SUBMITTING MANUSCRIPTS**

<https://www.wjgnet.com/bpg/gerinfo/239>

**ONLINE SUBMISSION**

<https://www.f6publishing.com>

## COVID-19 pneumonia: A review of typical radiological characteristics

María Churruca, Elisa Martínez-Besteiro, Felipe Couñago, Pedro Landete

**ORCID number:** María Churruca 0000-0001-6198-3619; Elisa Martínez-Besteiro 0000-0002-2968-1271; Felipe Couñago 0000-0001-7233-0234; Pedro Landete 0000-0002-9631-9408.

**Author contributions:** All authors contributed to this paper with conception and design of the manuscript, literature review and analysis, drafting and critical revision and editing, and final approval of the final version.

**Conflict-of-interest statement:** Authors declare no potential conflict of interests for this article.

**Open-Access:** This article is an open-access article that was selected by an in-house editor and fully peer-reviewed by external reviewers. It is distributed in accordance with the Creative Commons Attribution NonCommercial (CC BY-NC 4.0) license, which permits others to distribute, remix, adapt, build upon this work non-commercially, and license their derivative works on different terms, provided the original work is properly cited and the use is non-commercial. See: <http://creativecommons.org/licenses/by-nc/4.0/>

**Manuscript source:** Invited manuscript

**Specialty type:** Radiology, nuclear medicine and medical imaging

**María Churruca, Elisa Martínez-Besteiro,** Pulmonology Department, Hospital Universitario de La Princesa, Madrid 28006, Spain

**Felipe Couñago,** Department of Radiation Oncology, Hospital Universitario Quirónsalud Madrid, Madrid 28223, Spain

**Felipe Couñago,** Department of Radiation Oncology, Hospital La Luz, Madrid 28003, Spain

**Felipe Couñago,** Clinical Department, Faculty of Biomedicine, Universidad Europea de Madrid, Madrid 28670, Spain

**Pedro Landete,** Department of Pneumology, Hospital Universitario de la Princesa, Universidad Autónoma de Madrid, Madrid 28006, Spain

**Corresponding author:** María Churruca, MD, Doctor, Pulmonology Department, Hospital Universitario de La Princesa, Diego de León 62, Madrid 28006, Spain.  
[mchurrucaarospide@gmail.com](mailto:mchurrucaarospide@gmail.com)

### Abstract

Coronavirus disease 2019 (COVID-19) was first discovered after unusual cases of severe pneumonia emerged by the end of 2019 in Wuhan (China) and was declared a global public health emergency by the World Health Organization in January 2020. The new pathogen responsible for the infection, genetically similar to the beta-coronavirus family, is known as severe acute respiratory syndrome coronavirus-2 (SARS-CoV-2), and the current gold standard diagnostic tool for its detection in respiratory samples is the reverse transcription-polymerase chain reaction test. Imaging findings on COVID-19 have been widely described in studies published throughout last year, 2020. In general, ground-glass opacities and consolidations, with a bilateral and peripheral distribution, are the most typical patterns found in COVID-19 pneumonia. Even though much of the literature focuses on chest computed tomography (CT) and X-ray imaging and their findings, other imaging modalities have also been useful in the assessment of COVID-19 patients. Lung ultrasonography is an emerging technique with a high sensitivity, and thus useful in the initial evaluation of SARS-CoV-2 infection. In addition, combined positron emission tomography-CT enables the identification of affected areas and follow-up treatment responses. This review intends to clarify the role of the imaging modalities available and identify the most common radiological manifestations of COVID-19.

**Key Words:** COVID-19; Radiology; Chest X-ray; Lung ultrasonography; Computed

**Country/Territory of origin:** Spain**Peer-review report's scientific quality classification**

Grade A (Excellent): 0

Grade B (Very good): B

Grade C (Good): C

Grade D (Fair): 0

Grade E (Poor): 0

**Received:** January 25, 2021**Peer-review started:** January 25, 2021**First decision:** March 1, 2021**Revised:** March 8, 2021**Accepted:** September 14, 2021**Article in press:** September 14, 2021**Published online:** October 28, 2021**P-Reviewer:** Bhardwaj R, Grassi R**S-Editor:** Gong ZM**L-Editor:** A**P-Editor:** Liu JH

Tomography; Positron emission tomography-computed tomography

©The Author(s) 2021. Published by Baishideng Publishing Group Inc. All rights reserved.

**Core Tip:** Severe acute respiratory syndrome coronavirus-2 is a single-stranded RNA virus that was first isolated in December 2019. Currently, the reverse transcription-polymerase chain reaction test, performed on respiratory samples collected in suspected coronavirus disease 2019 (COVID-19) patients, is the gold standard diagnostic technique. Chest X-ray or computed tomography (CT) are the main imaging tests used to diagnose COVID-19 pneumonia, with ground-glass opacities and consolidations being the major imaging features encountered. There are other radiological modalities, such as lung ultrasonography and combined positron emission tomography-CT, that can provide further information for initial assessment and follow-up treatment response.

**Citation:** Churrua M, Martínez-Besteiro E, Couñago F, Landete P. COVID-19 pneumonia: A review of typical radiological characteristics. *World J Radiol* 2021; 13(10): 327-343

**URL:** <https://www.wjgnet.com/1949-8470/full/v13/i10/327.htm>

**DOI:** <https://dx.doi.org/10.4329/wjr.v13.i10.327>

## INTRODUCTION

On 31 December 2019, 27 cases of pneumonia of unknown aetiology were identified in the city of Wuhan (Hubei Province, China). A new pathogen, genetically similar to the beta-coronavirus family to which the coronaviruses that caused previous epidemics belong – severe acute respiratory syndrome coronavirus (SARS-CoV) and Middle East respiratory syndrome (MERS-CoV) – was isolated from collected respiratory samples and named severe acute respiratory syndrome coronavirus-2 (SARS-CoV-2). In January 2020, the World Health Organization named the disease Coronavirus disease 2019 (COVID-19) and declared a global public health emergency[1,2]. At the beginning of December 2020, a total of 65.8 million cases had been diagnosed, with 1.5 million confirmed deaths since the start of the pandemic[3].

The clinical presentation and radiological findings of COVID-19, as well as various diagnostic tools for its detection, have been widely described in multiple studies published throughout 2020. Regarding its clinical pattern, it is generally nonspecific and variable between individuals. In approximately 80%-90% of cases, the disease is mild or even asymptomatic. However, in the remaining approximately 10% of cases, generally frail patients with coexisting medical conditions develop a severe course of infection with dyspnoea, hypoxaemia and extensive radiological lung involvement[4]. The current gold standard diagnostic tool for the detection of SARS-CoV-2 RNA in respiratory samples is the reverse transcription-polymerase chain reaction (RT-PCR) test. This test shows a non-negligible rate of false negatives results, which can be attributed to errors in the extraction of nasopharyngeal swab sampling and when the sample is collected[5], since its sensitivity varies depending on the time since exposure. Thus, some studies estimate the sensitivity of the RT-PCR test to be 33% four days after exposure, 62% the day clinical manifestations begin and 80% three days after the onset of symptoms[6]. A combination of the growing and rapid spread of COVID-19 and the lack of RT-PCR testing kits in some affected areas has made new diagnostic and screening methods necessary[7]. Radiological diagnosis constitutes an essential component in the initial assessment of the extension and severity of the infection, as it is a key element to guide treatment and monitor the evolution of the condition[8]. So far, much of the literature has predominantly focused on characterising the radiological findings most frequently seen in chest computed tomography (CT). However, other diagnostic modalities, such as chest X-ray, lung ultrasonography (LUS) and combined positron emission tomography-computed tomography (PET-CT), have also been useful in the assessment and management of COVID-19 patients[5].

Ultimately, clinicians will choose an imaging modality based on its advantages, the experience gathered with each diagnostic method and the local resources available[9]. This review aims to clarify the diagnostic value of the different imaging modalities

available and describe the most common radiological findings in COVID-19.

## CHEST X-RAY

Chest X-ray is a frequently used method due to its low cost and wide availability, allowing various conditions to be studied in a simple and fast manner.

Furthermore, the existence of portable X-ray devices has enabled its use in intensive care units (ICUs). It is important that clinicians understand both the advantages and limitations of this imaging technique in terms of diagnosing COVID-19 pneumonia [10].

Some studies have proposed that chest radiography is a useful method both for the diagnosis and follow-up of the lung pathology generated by SARS-CoV-2 infection. The American College of Radiology (ACR) defends the application of portable X-rays in order to avoid collapses in imaging departments and minimise the risk of contamination associated with the intra-hospital mobilisation of COVID-19 patients and thus the spread of the disease [11].

Studies published during 2020 report a low sensitivity of chest X-rays in detecting pulmonary infiltrates during the initial phases of COVID-19 infection, as well as in mild forms of the disease (Table 1) [12]. In this regard, in a retrospective study of 64 patients, Wong *et al* [13] noted a chest radiography sensitivity of just 69%, compared to 91% for the RT-PCR test, and highlighted that 9% of cases in which X-ray detected abnormalities were initially RT-PCR negative. Both Ng *et al* [14] and Kim *et al* [15] found that chest X-ray has a low sensitivity when it comes to identifying lung alterations caused by SARS-CoV-2 infection. However, at the beginning of February, Chen *et al* [16] published a study which found a sensitivity of 100% with the use of chest radiography, with 74/99 patients presenting bilateral pneumonia and 25/99 unilateral involvement. However, these results can be explained by the overload that the health system was experiencing at that time, when the radiological screening of positive COVID-19 patients was limited to severe and advanced cases. For these reasons, the European Society of Radiology and the European Society of Thoracic Imaging recommend avoiding its use as a first-line technique in the diagnosis of COVID-19 pneumonia, restricting its use to the follow-up of patients admitted to the ICU, whose fragility would make it difficult to transfer them for a chest CT scan [11].

The severity of COVID-19 pneumonia cannot be determined by a SARS-CoV-2-positive nasopharyngeal swab; therefore, it is necessary to conduct a complementary radiological study. Recently, Cellina *et al* [17] retrospectively studied the prognostic predictive value of radiographic imaging performed in the initial stages of the disease in 246 COVID-19 patients, establishing a significant correlation between lung parenchymal involvement – valued by a percentage of the areas affected by ground-glass opacities (GGOs) or consolidation – and the severity of the disease.

The most common manifestations found in the chest radiographs of COVID-19 patients are GGOs – sometimes accompanied by reticular opacities – and lung consolidation, which, as in other atypical viral pneumonias, are typically multilobar and bilateral, generally involving the lower lobes (Table 2). One of the most specific signs of COVID-19 pneumonia is the peripheral and multifocal location of pulmonary infiltrates (Figure 1). Radiological impairments can rapidly evolve into a consolidative pattern, frequently reaching the peak of maximum severity and the worst pulmonary parenchymal involvement between 6-12 d after the onset of symptoms (Figure 2). Pleural effusion is extremely rare in patients infected by SARS-CoV-2, but if detected, is normally identified in the late stages of the disease. Lung cavitation images and pneumothorax are also unusual but can occur in some COVID-19 cases (Figure 3) [18]. Lomoro *et al* [19] retrospectively studied the chest X-rays of 32 patients, describing consolidations in 46.9% of the cases and GGOs in 37.5%, without identifying pleural effusion in any of them. The distribution of these findings was predominately bilateral (78.1%) and unilateral only in 6.2% of the cases. Furthermore, the lower lobes were the most frequently affected (52%), followed by 34.4% of patients who presented similar involvement of both the upper and lower lobes, while just 3.1% presented involvement in the upper lobes.

The impact of pneumomediastinum and subcutaneous emphysema during the COVID-19 pandemic has been described by Lemmers *et al* [20], who detected these conditions in 13% of the patients in their study. While at the outset this was considered to be a consequence of the barotrauma produced by mechanical ventilation in critically ill respiratory patients, it is nevertheless believed that these findings could be attributed to the Macklin effect, characterised by the rupture of the pulmonary alveoli

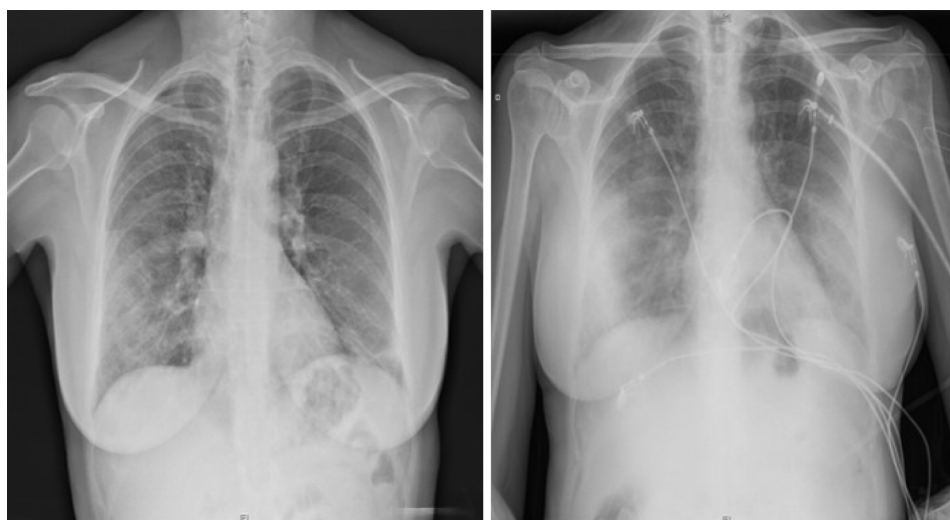
**Table 1 Adapted from Chen *et al*[21] chest X-ray sensitivity in coronavirus disease 2019 pneumonia**

Ref.	Cases	Initial RT-PCR	RT-PCR	Abnormal	Bilateral
Wong <i>et al</i> [13], 2020	64	Positive 58/64 (91%); Negative 6/64 (9%)	64 positive/0 negative	21/64 (33%)	32/64 (50%)
Chen <i>et al</i> [21], 2020	99	—	99 positive/0 negative	99/99 (100%)	74/99 (75%)
Kim <i>et al</i> [15], 2020	28	—	28 positive/ 0 negative	13/28 (46.4%)	6 (21.4%)
Ng <i>et al</i> [14], 2020	21	—	21 positive/0 negative	3/5 (60%)	2/5 (40%)

RT-PCR: Reverse transcription-polymerase chain reaction.

**Table 2 Most common findings of chest X-rays**

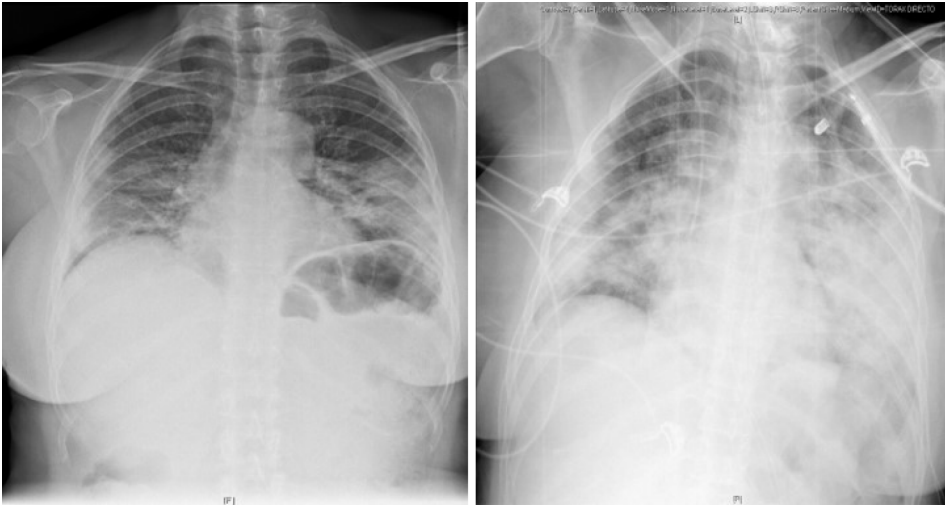
Main distribution	
Bilateral	+++
Unilateral	+
Imaging findings	
Ground-glass opacities	+++++
Consolidation	+++
Reticular opacities	+++
Pneumothorax/pneumomediastinum	++
Pleural effusion	+
Lung cavitation	+



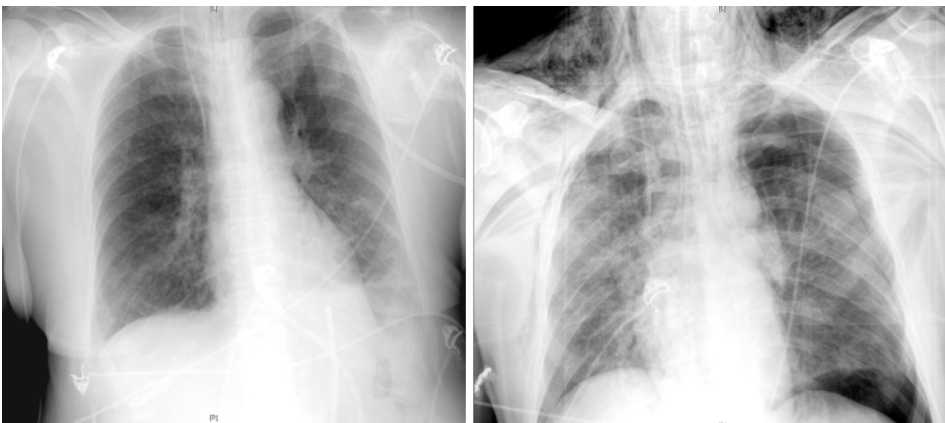
**Figure 1 Chest X-ray findings in a 60-year-old woman with confirmed severe acute respiratory syndrome coronavirus-2 pneumonia (positive RT-PCR test). PA X-ray (left) with patchy right mid-to-lower and left lower lung opacities. AP X-ray (right) with peripherally distributed bilateral lung opacities.**

– fragile in these patients – which releases air that centripetally dissects through the pulmonary interstitium, reaching the mediastinum.

Ultimately, the published data suggest that chest radiography has a high utility in patients with SARS-CoV-2 infection, especially in those with moderate to severe pulmonary involvement and in the advanced stages of the disease. Moreover, it can serve as a first-line imaging tool when resources are limited, playing a key role in the monitoring of patients and the evaluation of eventual associated complications[21].



**Figure 2** PA Chest X-ray findings in a 55-year-old woman with varying degrees of coronavirus disease 2019 pneumonia defined by diffuse ground-glass and consolidative opacities, predominantly involving the lower zone in both lungs.



**Figure 3** AP chest X-ray findings. AP chest X-ray findings (left) in an 80-year-old man with bilateral COVID-19 pneumonia and associated left pleural effusion. AP chest X-ray findings (right) in an 84-year-old man with bilateral alveolar infiltrates, diffusely distributed and left tension pneumothorax with subcutaneous emphysema.

## LUNG ULTRASONOGRAPHY IN THE COVID-19 ERA

Since the influenza A pandemic (H1N1) in 2009 and the avian influenza epidemic (H7N9) in 2013, LUS has become a significant diagnostic tool for the early detection of interstitial lung disease[22,23]. The current data published on COVID-19 support it as a safe and accessible emerging technique that can be applied to patients with either suspected or confirmed SARS-CoV-2 infection, both in the initial evaluation and the subsequent follow-up.

Traditionally, a healthy lung is considered invisible to ultrasonography. Since it is an aerated organ, it does not transmit ultrasound and therefore does not provide anatomical images. However, when lung tissue is occupied by fluid or cellular elements, its impedance varies resulting in artifacts that permit the identification of pathological findings.

The most basic of these artifacts are *A lines* – transversal hyperechoic lines parallel to the pleural line – separated by a distance equal to that between the pleural line and the skin. They are the result of the reverberation of the pleural line in a healthy lung, representing normal lung aeration.

An additional and significant artifact in LUS are *B lines*, which are described as vertical hyperechogenic artifacts that arise from the pleural line. They extend like a comet tail towards the deep parenchyma, hiding *A lines* on their way and moving synchronously with pleural sliding[24]. They are considered to be the main ultrasound sign of interstitial lung disease, and their quantity increases as air content decreases and lung density intensifies. The presence of more than three *B lines* per intercostal

space is considered pathological.

In normal conditions, the pleural line is hyperechogenic, thin and regular. However, in the presence of inflammation, thickening and/or fragmentation may occur if there are adjacent pulmonary consolidations. Additionally, there may be a decrease in pleural sliding.

One of the great advantages of LUS is its accessibility and immediacy, since it generates bedside and real-time images. Additionally, it is a non-invasive and innocuous technique that can be applied safely in certain population groups, such as pregnant women and paediatric patients.

Furthermore, LUS has a high sensitivity and outperforms chest X-rays in detecting the early stages of interstitial lung disease[25].

The main limitation of LUS is its operator-dependent nature, as its reliability is closely related to clinicians' experience and ability. However, in experienced hands, the whole exploration can be performed in a few minutes, thus providing results faster in comparison with other imaging tests.

### **Lung ultrasound patterns in COVID-19**

Before the outbreak of the COVID-19 pandemic, previous studies reported that LUS findings were highly consistent with chest CTs in patients with viral pneumonia[26]. Similarly, in patients with SARS-CoV-2 pneumonia, there is a good correlation between both imaging techniques[27-31].

The common ultrasound findings described in patients with SARS-CoV-2 infection are summarised in Table 3 and Figure 4[32,33].

Gattinoni *et al*[34] describe two different ultrasound patterns in the hyperinflammatory phase of COVID-19: One phenotype of diffuse pulmonary infiltrates (type L), with normal or minimally decreased lung compliance, and therefore limited scope for alveolar recruitment, and a second phenotype of extensive consolidations (type H), with a low or very low compliance and with a clinical and prognostic behaviour analogous to the common acute respiratory distress syndrome (ARDS).

None of the findings described so far are pathognomonic for COVID-19; therefore, LUS cannot provide a confirmatory diagnosis. As such, it is essential to integrate the images with a clinical assessment and nasopharyngeal swab result.

Recently, some authors have discovered an unusual finding that could be more specific to COVID-19: The 'light beam'[35]. This is a thick hyperechogenic band of confluent *B lines* that originates from a portion of the pleural line that is apparently preserved. It is usually found in the early stages of the disease and correlates with incipient GGOs on chest CT scan.

LUS findings vary depending on the stage of the disease (Figure 5)[36]. Thus, in the first days after the onset of symptoms, it is common to observe unilateral or bilateral focal *B lines*. As the disorder progresses, the density of lung parenchyma increases along with the number of *B lines*; diffuse and bilateral *B lines* appear, starting from a pleural line that begins to thicken and becomes irregular, with small subpleural consolidations. Finally, *B lines* may coalesce, creating a 'white lung' pattern of consolidation or hepatisation of the lung parenchyma – particularly in declining areas – with the respiratory failure that this implies.

Given its high sensitivity, LUS allows the detection of both deterioration and recovery in lung lesions during the final stage of the disease. Consequently, during the convalescent stage, there is a progressive regression of *B lines* and consolidations. Additionally, *A lines* appear one again, in accordance with aeration improvement[31].

LUS is also efficient for the assessment of other events that, although not common, can occur in the course of SARS-CoV-2 pneumonia. These events include pleural effusion, pneumothorax – associated with mechanical ventilation or the insertion of a central venous catheter, among other causes – or a pulmonary embolism (PE). CT pulmonary angiogram remains the gold standard technique for the diagnosis of PE, but in critical, unstable patients with a suspected diagnosis, ultrasounds can provide valuable information on the presence of right ventricular dysfunction, acute pulmonary hypertension or deep vein thrombosis in the lower limbs.

### **Ultrasound scanning protocol**

Evaluation of patients with acute respiratory failure using the Bedside Lung Ultrasound in Emergency Protocol (BLUE protocol), is one of the best-known applications of LUS[37]. In the particular case of COVID-19, one of its main challenges lies in standardising the technique to allow comparisons between study groups.

In clinical practice – and especially in ICUs – certain specific scanning protocols have been designed to quantify the extent of lung involvement by COVID-19[29,38-40]. We highlight the proposal of Soldati *et al*[38], which delimits seven exploration

**Table 3 Common ultrasound findings in coronavirus disease 2019**

**B pattern:** Presence of multifocal and separated B-lines (“*waterfall sign*”) or confluent B-lines (“*white lung*”). The distribution is predominantly posteroinferior and bilateral, and varies depending on the severity of the disease

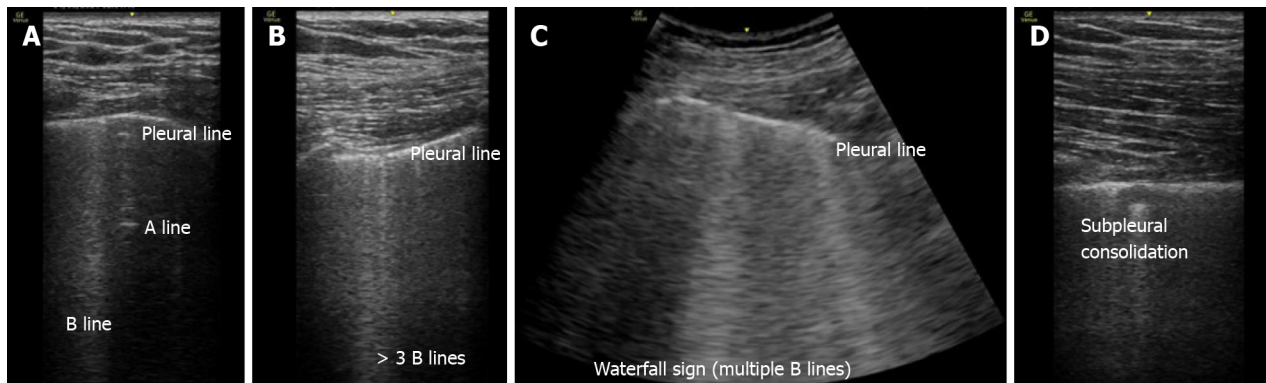
**Patchy involvement:** Pathological areas of lung parenchyma alternating with well-aerated and preserved areas

**Thickening or interruption of pleural line, and reduced pleural sliding**

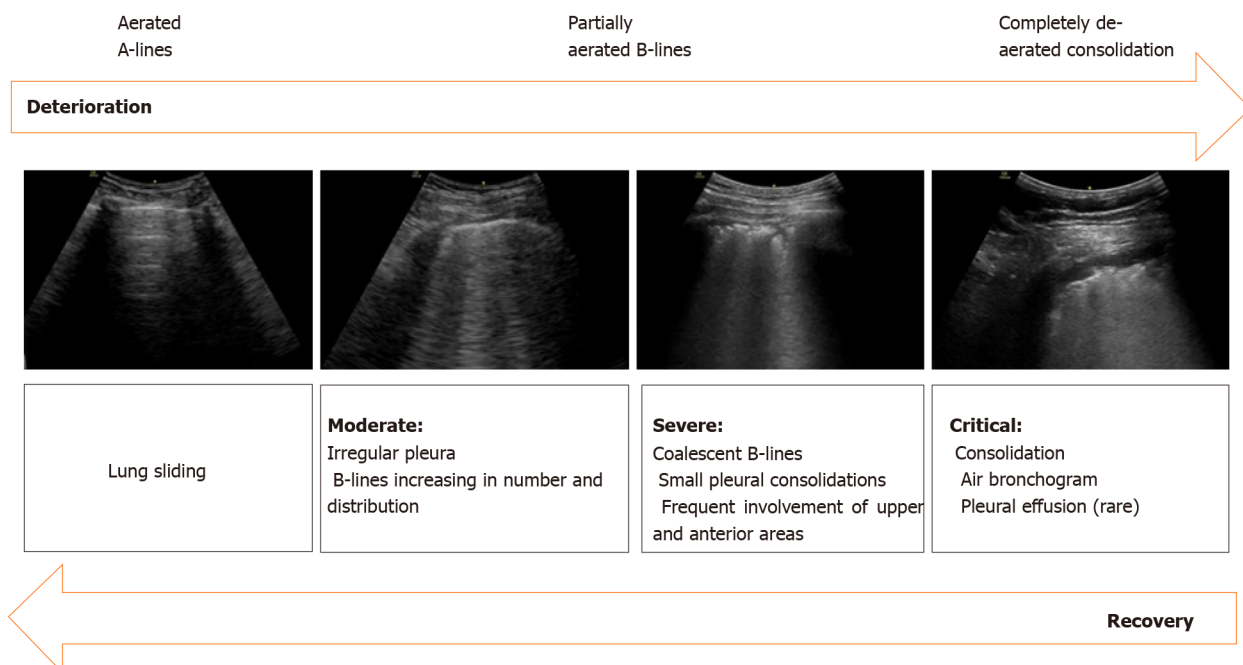
**Small subpleural consolidations** in any region of the lung, more common at bases. Less frequently, larger consolidations may be found, with or without dynamic air bronchogram

**Decrease in blood flow** (within doppler mode) related to subpleural consolidations

**Small or absent pleural effusion**



**Figure 4 Images demonstrating the main changes in lung ultrasonography in coronavirus disease 2019 patients.** A: Normal A-pattern with presence of 1 B line. B: Normal pleural line with presence of > 3 B lines. C: Irregular pleural line with coalescent B lines. D: Pleural involvement as sign of poor aeration.



**Figure 5 Sonographic characteristics of moderate, severe and critical pleural and parenchymal changes in patients with coronavirus disease 2019.**

areas in each hemithorax, 14 zones in total. Each hemithorax is divided by three longitudinal lines – at the sternal, anterior and posterior axillary lines – and a transverse line at the nipple level, which separates a superior and an inferior area. Each one of the segments described receives a score between 0–3, according to the predominant

findings in them, defining four different patterns (Table 4, Figure 4)[40].

At the end of the exploration, the score assigned to every explored area is accumulated, obtaining the final score. In the case of patterns B1 and B2, special attention must be paid to the pleural line, since the presence of pleural lesions is a severity sign that should be indicated by adding the letter 'p' to the score.

Ultimately, this scale allows the estimation of the extent of lung involvement in COVID-19 and provides clinical and prognostic information. Therefore, it could contribute to identifying those patients who require hospital admission, as well as to predict their response to certain therapies, such as prone positioning or mechanical ventilation. For example, the progressive reduction in the number of *B lines*, the reappearance of *A lines* or the regression of consolidations could suggest a favourable clinical evolution and support the decision to progress in the de-escalation of care.

A summary of the potential applications of LUS in COVID-19 pandemic is outlined below: (1) At triage: For risk stratification and initial screening of lung involvement in patients with suspected or confirmed SARS-CoV-2 infection; (2) In patients with symptoms consistent with COVID-19, but a negative nasopharyngeal swab (RT-PCR) and indeterminate chest X-ray: The presence of suggestive ultrasound findings could support the idea that the RT-PCR may represent a false-negative result; and (3) During hospital admission, to monitor the progression or regression of pulmonary lesions: Successive ultrasound explorations might result in accurate information that could be used to determine ventilation strategies and assess patients' response to them. For example, those with posterolateral consolidations could benefit from early prone positioning[41,42], or lung aeration could be improved in those with coalescent *B lines* by titrating positive end-expiratory pressure (PEEP). In addition, in critically-ill patients – respiratory or hemodynamically unstable – LUS could play a remarkable role in the early detection of complications, including superimposed bacterial pneumonia and pneumothorax, and as a guide for clinical decisions.

Therefore, LUS is becoming an increasingly valuable diagnostic tool due to its high sensitivity, safety, immediacy and accuracy. On this basis, it may play a key role in the management of patients with COVID-19. However, its low specificity for this pathology does not allow clinicians to distinguish COVID-19 from other viral infections. Therefore, LUS images must be evaluated in conjunction with clinical and microbiological data.

## ROLE OF CHEST CT SCAN IN THE EVALUATION OF COVID-19 PNEUMONIA

Chest CT scan is a key element in the management of SARS-CoV-2 infection. It allows the detection of distinctive pulmonary manifestations, establishes their severity and enables the follow-up of their progression, differentiating early stages from more advanced ones based on the radiological findings identified. However, its role as a screening tool in COVID-19 pneumonia has yet to be fully defined[43].

Recent studies concerning COVID-19 pneumonia propose that chest CT is a more sensitive, practical and rapid diagnostic technique compared to the RT-PCR test, especially in the early stages of the disease (Table 5). Ai *et al*[44] reported a sensitivity for chest CT of 97%, taking RT-PCR as a reference, compared to 59% of RT-PCR performed in patients with suspected SARS-CoV-2 infection. However, chest CT specificity was only 25%. Furthermore, a meta-analysis conducted by Kim *et al*[45] produced similar results, with a higher chest CT sensitivity than the one found for RT-PCR, 94% and 89%, respectively. However, a low specificity (37%) was encountered, which could be due to the fact that the nonspecific findings of COVID-19 pneumonia may overlap with those found in other viral pneumonias, so a high rate of false positives can be detected in chest CTs, especially in areas of low prevalence of the disease.

Supporting these results, the Society of Thoracic Radiology, the ACR and the Radiological Society of North America recommend avoiding using chest CT as a routine screening test in patients with suspected SARS-CoV-2 infection[46]. Instead it should be saved for the assessment of symptomatic patients or those with a negative RT-PCR but high clinical suspicion, as it can help to characterise the disease by detecting typical pulmonary manifestations[47].

Thus, chest CT findings suggesting viral pneumonia, accompanied by a typical clinical presentation and compatible epidemiological data, should strongly indicate SARS-CoV-2 infection even though the RT-PCR may be negative[48].

**Table 4 Adapted from Vetrugno *et al*[39] proposal of lung ultrasonography score system in coronavirus disease 2019**

Class	Score	Definition
A	0 point	Normal aeration pattern. Presence of <i>A lines</i> , pleural sliding, and $\leq 3$ well-spaced <i>B lines</i>
B1	1 point	More than 3 <i>B lines</i> per intercostal space
B2	2 points	Confluent <i>B lines</i> (with or without small consolidations). This pattern corresponds to the presence of GGO on chest CT scan
C	3 points	Large consolidations, parenchymal hepatization (with or without air bronchogram)

CT: Computed tomography; GGO: Ground-glass opacity.

**Table 5 Chest computed tomography and reverse transcription-polymerase chain reaction sensitivity in coronavirus disease 2019 pneumonia**

Ref.	Number of patients	Symptoms	Positive RT-PCR	RT-PCR sensitivity	Chest CT abnormalities	Chest CT sensitivity
Fang <i>et al</i> [76], 2020	51	Fever/acute respiratory symptoms	36/51 patients	71%	50/51 patients	98%
Xie <i>et al</i> [48], 2020	167	Fever	162/167 patients	97%	160/167 patients	95.8%
Yang <i>et al</i> [77], 2020	149	Fever, cough and sputum	149/149	100%	132/149	88.6%
Ai <i>et al</i> [44], 2020	1014	—	601/1014	59%	888/1014	88%
Kim <i>et al</i> [45], 2020	7720	—	1336/1502	89%	5845/6218	94%

RT-PCR: Reverse transcription-polymerase chain reaction; CT: Computed tomography.

There are currently few works on the use of artificial intelligence in the diagnosis of SARS-CoV-2. Although this technique could be useful in diagnosing COVID-19 pneumonia, there is little evidence so far to recommend it as a routine diagnostic approach[49].

### **Chest CT imaging features of COVID-19**

SARS-CoV-2 infection causes direct lung damage through the angiotensin-converting enzyme. Interstitial pneumonia with alveolar edema in the early stages and diffuse alveolar damage in the most severe stages are the underlying pathological mechanisms responsible for the typical radiological images of COVID-19 pneumonia and its rapid progression[50,51].

A wide range of radiological findings have been reported in the multiple published studies (Table 6); however, the images may differ depending on the evolutionary stage of the disease. The main and most frequent finding of COVID-19 pneumonia is the presence of GGOs, typically subpleural (Figure 6)[52,53]. GGOs are defined as areas of slightly increased density without obscuration of bronchial and vascular structures, caused by a partial filling of the alveolar spaces and interstitial thickening. In an investigation conducted by Chung *et al*[53] with 21 COVID-19 patients, GGOs – being the most characteristic radiological finding in the early stages of the disease – were found in 57% of cases[54]. In accordance with these results, Pan *et al*[55] predominantly observed subpleural GGOs at the onset of the disease, with the subsequent development of a ‘crazy paving’ pattern and consolidations at two weeks of evolution.

Regarding the distribution of the radiological images encountered, a retrospective study of 101 patients[56] classified them as either bilateal (82.2%), peripheral (87.1%) or multifocal (54.5%), principally involving the lower lobes (54.5%) of the patients. These results are broadly in line with other published studies. In a study conducted by Salehi *et al*[57], pulmonary changes were bilateral (87.5%), with a peripheral distribution (76.0%) and a predominantly multilobar (78.8%) and posterior (80.4%) pulmonary infiltration.

**Table 6 Adapted from Carotti *et al*[57] average percentage of chest computed tomography manifestations of coronavirus disease 2019**

Average percentage of chest computed tomography manifestations of coronavirus		
Ground-glass opacities	66%	+++++
Ground-glass opacities + consolidation	47%	++++
Consolidation	41%	++++
Interlobular septal thickening	53%	++++
Reticular pattern	27%	++
Crazy paving pattern	20%	++
Air bronchogram sign	50%	++++
Bronchial wall thickening	17%	++
Pleural effusion	10%	+
Nodules	15%	++
Reverse halo sign	3%	+
Lymphadenopathies	8%	+
Pericardial effusion	4%	+

**Figure 6** 59-year-old man with no clinical background and confirmed severe acute respiratory syndrome coronavirus-2 infection. Chest computed tomography imaging with peripherally distributed bilateral and multilobar ground-glass opacities.

Consolidation images have been described as the second most prevalent finding, reported in 2%-63% of cases. The involvement may be multifocal, patchy, or segmental, with a subpleural or peribronchovascular distribution. The development of this consolidation pattern may be in relation to the progression of the disease and can either coexist alongside or replace GGOs between week one to three of the clinical course, which could alert to the severity of the disease[55,58] (Figure 7).

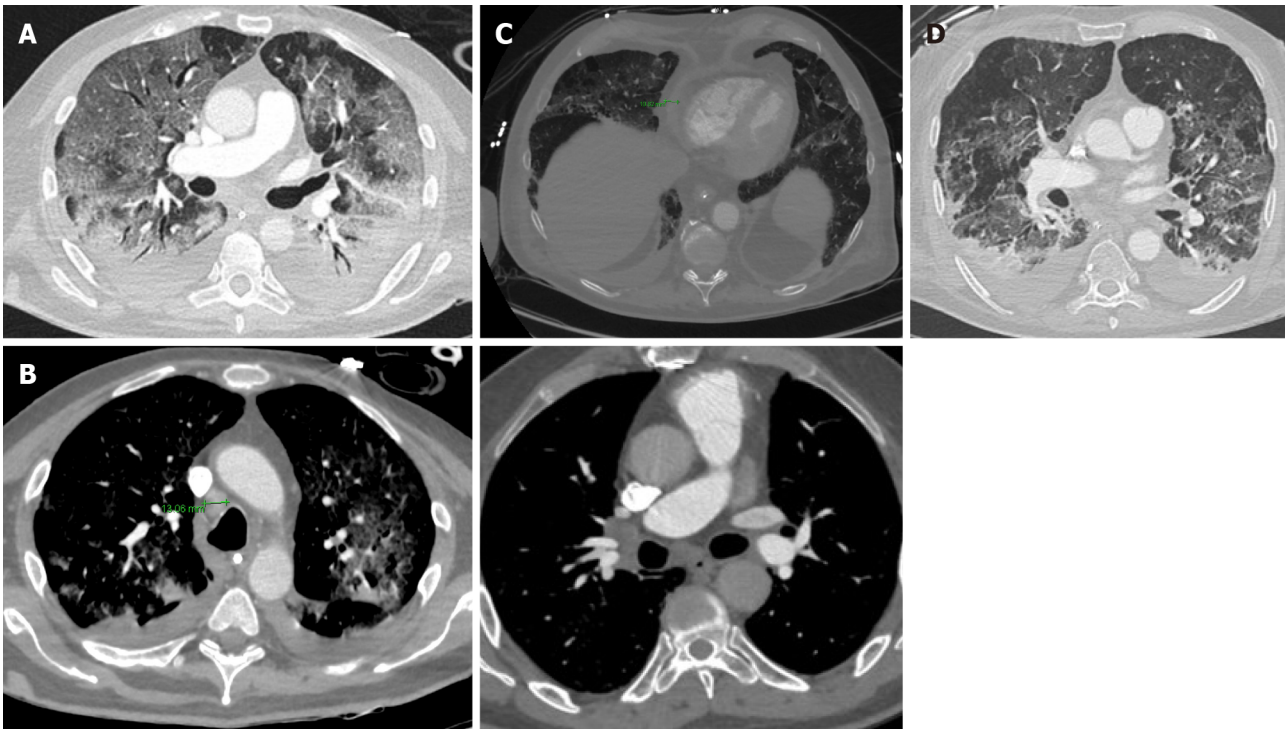
Recent investigations have reported 5%-36% of COVID-19 patients with a crazy paving pattern on their imaging studies. This pattern refers to the appearance of GGOs with superimposed interlobular and intralobular septal thickening. While not observed as frequently as GGOs and consolidation, this pattern may be a sign that the disease is reaching its peak of maximum severity[54], which is described by Pan *et al* [55] as occurring 10 d after the onset of symptoms.

Other findings, such as the reverse halo sign (11.0%), the air bronchogram sign (14%), pleural thickening (15.0%), pleural effusion (4.0%) and the appearance of lymphadenopathies (2.7%), have been less frequently described[59]. Bronchial wall thickening and the presence of extrapulmonary lesions suggest severe inflammation and are characteristic of critical COVID-19 pneumonia (Figure 8)[60].

A reticular pattern associated with bronchiolectasis and irregular thickening of the interlobular septa has been identified with the progression of the disease, usually after the second week of evolution (Figure 9). These interstitial changes suggest the development of fibrosis. Pulmonary fibrosis is a relatively common consequence of ARDS. Approximately 40% of patients diagnosed with COVID-19 pneumonia are believed to develop ARDS, 20% of them severe. Although long-term studies have shown the existence of persistent interstitial alterations in patients who have suffered



**Figure 7** 45-year-old woman with coronavirus disease 2019-confirmed pneumonia. Chest computed tomography imaging. A: Bilateral and patchy ground-glass opacities involving upper and lower lobes. B: Crazy paving pattern involving upper and lower lobes. C: Alveolar consolidation mainly involving the lower lobes, with fibrous stripes associated.



**Figure 8** Unusual chest computed tomography findings in coronavirus disease 2019 pneumonia. A: Air bronchogram sign; B: Right paratracheal lymphadenopathy (marked) and right hilar lymphadenopathy; C: Pericardial effusion; D: Pleural effusion.

pneumonia due to other coronaviruses genetically similar to SARS-CoV-2 – SARS-CoV and MERS-CoV, first identified in 2002 and 2012 respectively[61,62], – the natural history of COVID-19 pneumonia has not yet been fully defined. Therefore, it is too early to classify these pulmonary changes as irreversible fibrotic changes, meaning that future prospective studies are necessary to confirm these preliminary results.

## FLUORODEOXYGLUCOSE-POSITRON EMISSION TOMOGRAPHY IN COVID-19

PET-CT imaging with fluorodeoxyglucose (FDG) is a relevant and well-established diagnostic tool in tumoral pathology; in combination with CT, it provides anatomical and functional information that facilitates the study of tumoral extension and the evaluation of therapeutic response. This technique has also recently been gaining a certain importance in inflammatory and infectious pathologies. However, it has not yet been validated in this field and its use is not routinely recommended[63].

Several studies have suggested that PET-CT may be useful to evaluate the immune response to viral infections and their progression[64,65], since FDG uptake increases in



**Figure 9** Reticular pattern and fibrous stripes showing coronavirus disease 2019 pneumonia in evolution (> 2 wk after the onset of symptoms).

neutrophils, lymphocytes, activated macrophages and granulocytes where there is inflammation. Therefore, it enables the localisation of where the immune response starts and how it develops.

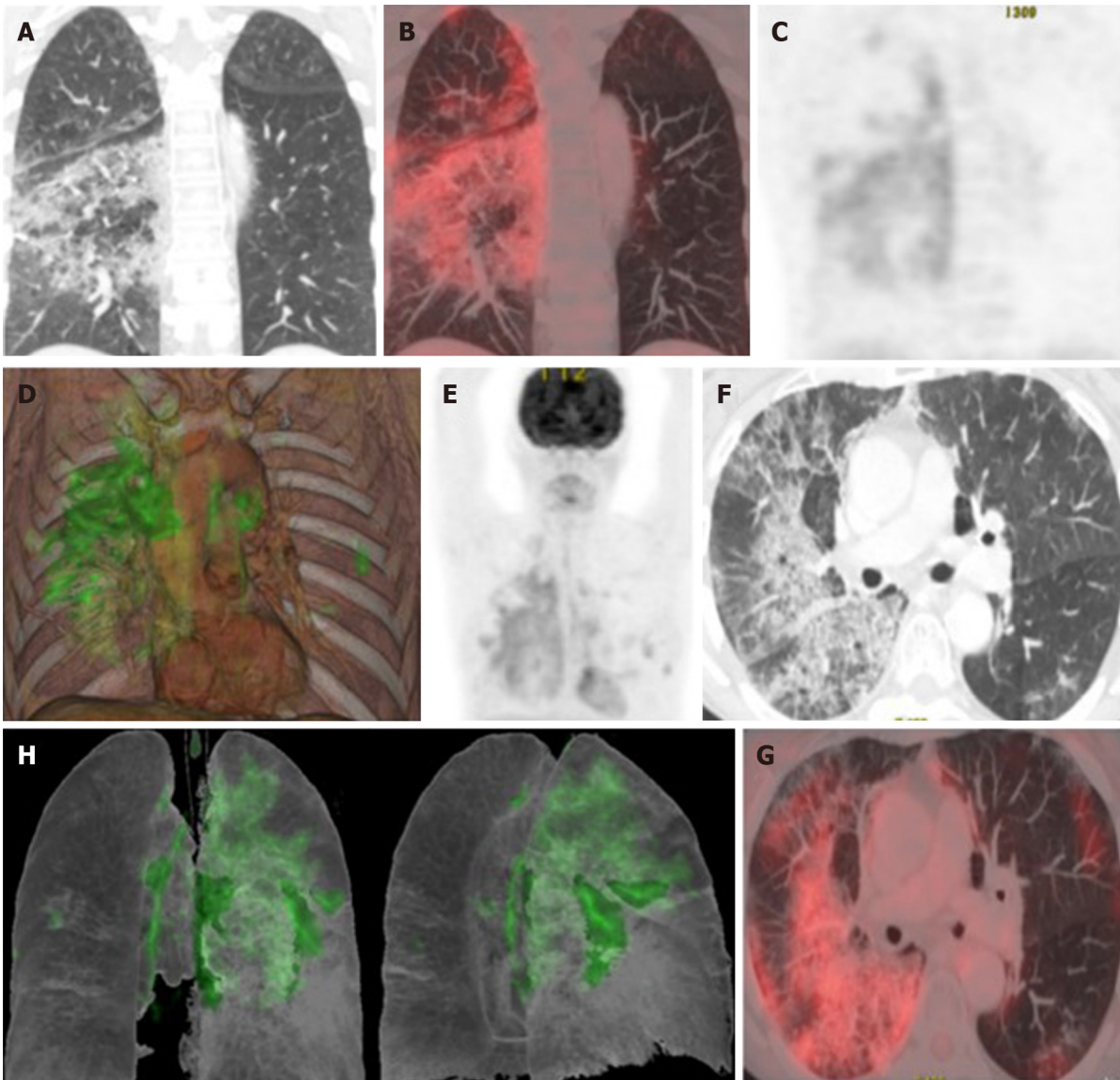
Some authors have used PET-CT in animal models to study the development of viral infections, including MERS-CoV, H1N1, and HIV[66-68]. After exposure to the virus, in the absence of symptoms or abnormalities in chest CT scans, PET-CT is able to detect increased cellular metabolism in the lymph node stations directly involved in the lymphatic drainage of the lung tissue: the mediastinal and axillary nodes[66]. Furthermore, this increase in FDG uptake is observed before massive viral replication occurs[68]; therefore, PET-CT could have a significant utility in early stages of infection.

In line with other inflammatory processes, the lung areas affected by COVID-19 show an increased FDG uptake (Figure 10)[69]. It has been postulated that there could be a correlation between greater FDG uptake and a slower progression towards improvement, as well as a higher erythrocyte sedimentation rate[70]. Various studies – which compare the findings of PET-CT and chest CT scans in COVID-19 patients – have also reported that despite the absence of lymphadenopathy in CT, PET-CT does detect an increased FDG uptake at the mediastinal and subclavicular lymph nodes[70-73]. Additionally, in some patients infected by SARS-CoV-2, mild inflammatory activity has been observed in the spleen and bone marrow, possibly in relation to a systemic inflammatory state. Finally, Lutje *et al*[74] proposed that PET-CT with FDG might help in detecting changes in other organs, including the heart, kidneys and gastrointestinal tract. However, all of the data published so far agree that the inflammatory process triggered by COVID-19 has a particular tropism for the lower respiratory tract.

Preliminary studies have suggested that there is a certain correlation between the metabolic information provided by PET-CT and the degree of ventilation in different areas of the lung[75]. The collected data indicate that poorly ventilated areas of lung parenchyma show a greater FDG uptake than non-ventilated areas. This might mean that, within inflammatory processes, the better ventilated areas of the lung probably present higher infiltration by inflammatory cells[76].

PET-CT is not recommended as an initial test for diagnosing SARS-CoV-2 infection, as it involves greater irradiation to the patient than chest X-ray or chest CT scan, and the image acquisition periods are longer. Nonetheless, the structural and metabolic image that it provides could have an application in COVID-19 in the following situations[77]: (1) As a diagnostic tool for differential diagnosis in asymptomatic patients and in already diagnosed patients with a normal CT scan; (2) For monitoring responses to therapy, in combination with chest CT scan; (3) As a potential prognostic factor in the recovery stage of the disease; and (4) To evaluate extrapulmonary systemic involvement.

In conclusion, the studies published to date on the potential role of PET-CT in COVID-19 are limited. However, the existing data suggest that it may provide



**Figure 10** Taken from Landete *et al*[12], A 65-year-old patient with a history of invasive lepidic-predominant adenocarcinoma (stage pT1bNxM0) treated with surgery, chemotherapy and radiotherapy. A: Coronal computed tomography (CT) showing the crazy paving pattern with a markedly asymmetric bilateral distribution, mainly affecting the right side. B: Positron emission tomography-CT (PET-CT) coronal section. C: Metabolic PET. D: Volume rendering 3D PET-CT. E: MIP, PET. Images B–E reveal an increased cellular activity [standard uptake value (SUV) 4–6] related to the associated inflammatory process and a PET-CT pattern of bilateral coronavirus disease 2019 (COVID-19) with viral pneumonitis, predominantly right-sided. F: Axial CT showing crazy paving pattern with a bilateral, yet markedly asymmetric distribution, predominant right-sided. G and H: Axial section and 3D volume rendering from PET-CT metabolic imaging revealing increased cellular activity (SUV 4–6) related to the associated inflammatory process. PET-CT pattern of bilateral, predominantly right-sided, COVID-19 viral pneumonitis. Citation: Landete P, Quezada Loaiza CA, Aldave-Orzaiz B, Muñiz SH, Maldonado A, Zamora E, Sam Cerna AC, Del Cerro E, Alonso RC, Couñago F. Clinical features and radiological manifestations of COVID-19 disease. *World J Radiol* 2020; 12(11): 247-260. Copyright ©The Author(s) 2020. Published by Baishideng Publishing Group Inc[12].

valuable information – complementary to the other imaging tests mentioned in this review – which helps to understand the pathophysiology of SARS-CoV-2 infection, define therapeutic strategies and assess the response to them.

## CONCLUSION

Chest X-ray and CT play an important role in detecting abnormal lung changes, being the main imaging tests used to diagnose COVID-19 pneumonia. Other radiological modalities, such as lung ultrasonography and PET-CT, can provide further information for initial assessment and follow-up treatment response. Moreover, as we move through the pandemic, we believe that radiological findings of COVID-19 will be further explored, helping in determining diagnostic imaging features and guiding

treatment.

## REFERENCES

- 1 **Sohrabi C**, Alsafi Z, O'Neill N, Khan M, Kerwan A, Al-Jabir A, Iosifidis C, Agha R. World Health Organization declares global emergency: A review of the 2019 novel coronavirus (COVID-19). *Int J Surg* 2020; **76**: 71-76 [PMID: [32112977](#) DOI: [10.1016/j.ijssu.2020.02.034](#)]
- 2 **Udugama B**, Kadhiresan P, Kozlowski HN, Malekjahani A, Osborne M, Li VYC, Chen H, Mubareka S, Gubbay JB, Chan WCW. Diagnosing COVID-19: The Disease and Tools for Detection. *ACS Nano* 2020; **14**: 3822-3835 [PMID: [32223179](#) DOI: [10.1021/acsnano.0c02624](#)]
- 3 **World Health Organization**. COVID-19 Weekly epidemiological update-8 December 2020. [cited 20 January 2021] Available from: <https://www.who.int/publications/m/item/weekly-epidemiological-update-8-december-2020>
- 4 **Pascarella G**, Strumia A, Piliengo C, Bruno F, Del Buono R, Costa F, Scarlata S, Agrò FE. COVID-19 diagnosis and management: a comprehensive review. *J Intern Med* 2020; **288**: 192-206 [PMID: [32348588](#) DOI: [10.1111/joim.13091](#)]
- 5 **Aljondi R**, Alghamdi S. Diagnostic Value of Imaging Modalities for COVID-19: Scoping Review. *J Med Internet Res* 2020; **22**: e19673 [PMID: [32716893](#) DOI: [10.2196/19673](#)]
- 6 **Wiersinga WJ**, Rhodes A, Cheng AC, Peacock SJ, Prescott HC. Pathophysiology, Transmission, Diagnosis, and Treatment of Coronavirus Disease 2019 (COVID-19): A Review. *JAMA* 2020; **324**: 782-793 [PMID: [32648899](#) DOI: [10.1001/jama.2020.12839](#)]
- 7 **Araujo-Filho JAB**, Sawamura MVY, Costa AN, Cerri GG, Nomura CH. COVID-19 pneumonia: what is the role of imaging in diagnosis? *J Bras Pneumol* 2020; **46**: e20200114 [PMID: [32236303](#) DOI: [10.36416/1806-3756/e20200114](#)]
- 8 **Gandhi D**, Ahuja K, Grover H, Sharma P, Solanki S, Gupta N, Patel L. Review of X-ray and computed tomography scan findings with a promising role of point of care ultrasound in COVID-19 pandemic. *World J Radiol* 2020; **12**: 195-203 [PMID: [33033574](#) DOI: [10.4329/wjr.v12.i9.195](#)]
- 9 **Rubin GD**, Ryerson CJ, Haramati LB, Sverzellati N, Kanne JP, Raoof S, Schluger NW, Volpi A, Yim JJ, Martin IBK, Anderson DJ, Kong C, Altes T, Bush A, Desai SR, Goldin J, Goo JM, Humbert M, Inoue Y, Kauczor HU, Luo F, Mazzone PJ, Prokop M, Remy-Jardin M, Richeldi L, Schaefer-Prokop CM, Tomiyama N, Wells AU, Leung AN. The Role of Chest Imaging in Patient Management During the COVID-19 Pandemic: A Multinational Consensus Statement From the Fleischner Society. *Chest* 2020; **158**: 106-116 [PMID: [32275978](#) DOI: [10.1016/j.chest.2020.04.003](#)]
- 10 **Farias LPG**, Fonseca EKUN, Strabelli DG, Loureiro BMC, Neves YCS, Rodrigues TP, Chate RC, Nomura CH, Sawamura MVY, Cerri GG. Imaging findings in COVID-19 pneumonia. *Clinics (Sao Paulo)* 2020; **75**: e2027 [PMID: [32578826](#) DOI: [10.6061/clinics/2020/e2027](#)]
- 11 **Revel MP**, Parkar AP, Prosch H, Silva M, Sverzellati N, Gleeson F, Brady A; European Society of Radiology (ESR) and the European Society of Thoracic Imaging (ESTI). COVID-19 patients and the radiology department - advice from the European Society of Radiology (ESR) and the European Society of Thoracic Imaging (ESTI). *Eur Radiol* 2020; **30**: 4903-4909 [PMID: [32314058](#) DOI: [10.1007/s00330-020-06865-y](#)]
- 12 **Landete P**, Quezada Loaiza CA, Aldave-Orzaiz B, Muñoz SH, Maldonado A, Zamora E, Sam Cerna AC, Del Cerro E, Alonso RC, Couñago F. Clinical features and radiological manifestations of COVID-19 disease. *World J Radiol* 2020; **12**: 247-260 [PMID: [33362916](#) DOI: [10.4329/wjr.v12.i11.247](#)]
- 13 **Wong HYF**, Lam HYS, Fong AH, Leung ST, Chin TW, Lo CSY, Lui MM, Lee JCY, Chiu KW, Chung TW, Lee EYP, Wan EYF, Hung IFN, Lam TPW, Kuo MD, Ng MY. Frequency and Distribution of Chest Radiographic Findings in Patients Positive for COVID-19. *Radiology* 2020; **296**: E72-E78 [PMID: [32216717](#) DOI: [10.1148/radiol.2020201160](#)]
- 14 **Ng MY**, Lee EYP, Yang J, Yang F, Li X, Wang H, Lui MM, Lo CS, Leung B, Khong PL, Hui CK, Yuen KY, Kuo MD. Imaging Profile of the COVID-19 Infection: Radiologic Findings and Literature Review. *Radiol Cardiothorac Imaging* 2020; **2**: e200034 [PMID: [33778547](#) DOI: [10.1148/ryct.2020200034](#)]
- 15 **Kim ES**, Chin BS, Kang CK, Kim NJ, Kang YM, Choi JP, Oh DH, Kim JH, Koh B, Kim SE, Yun NR, Lee JH, Kim JY, Kim Y, Bang JH, Song KH, Kim HB, Chung KH, Oh MD; Korea National Committee for Clinical Management of COVID-19. Clinical Course and Outcomes of Patients with Severe Acute Respiratory Syndrome Coronavirus 2 Infection: a Preliminary Report of the First 28 Patients from the Korean Cohort Study on COVID-19. *J Korean Med Sci* 2020; **35**: e142 [PMID: [32242348](#) DOI: [10.3346/jkms.2020.35.e142](#)]
- 16 **Chen N**, Zhou M, Dong X, Qu J, Gong F, Han Y, Qiu Y, Wang J, Liu Y, Wei Y, Xia J, Yu T, Zhang X, Zhang L. Epidemiological and clinical characteristics of 99 cases of 2019 novel coronavirus pneumonia in Wuhan, China: a descriptive study. *Lancet* 2020; **395**: 507-513 [PMID: [32007143](#) DOI: [10.1016/S0140-6736\(20\)30211-7](#)]
- 17 **Cellina M**, Panzeri M, Oliva G. Chest Radiography Features Help to Predict a Favorable Outcome in Patients with Coronavirus Disease 2019. *Radiology* 2020; **297**: E238 [PMID: [32484419](#) DOI: [10.1148/radiol.2020202326](#)]
- 18 **Jacobi A**, Chung M, Bernheim A, Eber C. Portable chest X-ray in coronavirus disease-19 (COVID-

- 19): A pictorial review. *Clin Imaging* 2020; **64**: 35-42 [PMID: [32302927](#) DOI: [10.1016/j.clinimag.2020.04.001](#)]
- 19 **Lomoro P**, Verde F, Zerboni F, Simonetti I, Borghi C, Fachinetti C, Natalizi A, Martegani A. COVID-19 pneumonia manifestations at the admission on chest ultrasound, radiographs, and CT: single-center study and comprehensive radiologic literature review. *Eur J Radiol Open* 2020; **7**: 100231 [PMID: [32289051](#) DOI: [10.1016/j.ejro.2020.100231](#)]
  - 20 **Lemmers DHL**, Abu Hilal M, Bnà C, Prezioso C, Cavallo E, Nencini N, Crisci S, Fusina F, Natalini G. Pneumomediastinum and subcutaneous emphysema in COVID-19: barotrauma or lung frailty? *ERJ Open Res* 2020; **6** [PMID: [33257914](#) DOI: [10.1183/23120541.00385-2020](#)]
  - 21 **Chen SG**, Chen JY, Yang YP, Chien CS, Wang ML, Lin LT. Use of radiographic features in COVID-19 diagnosis: Challenges and perspectives. *J Chin Med Assoc* 2020; **83**: 644-647 [PMID: [32349032](#) DOI: [10.1097/JCMA.0000000000000336](#)]
  - 22 **Zhang YK**, Li J, Yang JP, Zhan Y, Chen J. Lung ultrasonography for the diagnosis of 11 patients with acute respiratory distress syndrome due to bird flu H7N9 infection. *Virol J* 2015; **12**: 176 [PMID: [26503117](#) DOI: [10.1186/s12985-015-0406-1](#)]
  - 23 **Tsai NW**, Ngai CW, Mok KL, Tsung JW. Lung ultrasound imaging in avian influenza A (H7N9) respiratory failure. *Crit Ultrasound J* 2014; **6**: 6 [PMID: [24949191](#) DOI: [10.1186/2036-7902-6-6](#)]
  - 24 **Volpicelli G**, Elbarbary M, Blaivas M, Lichtenstein DA, Mathis G, Kirkpatrick AW, Melniker L, Gargani L, Noble VE, Via G, Dean A, Tsung JW, Soldati G, Copetti R, Bouhemad B, Reissig A, Agricola E, Rouby JJ, Arbelot C, Liteplo A, Sargsyan A, Silva F, Hoppmann R, Breitkreutz R, Seibel A, Neri L, Storti E, Petrovic T; International Liaison Committee on Lung Ultrasound (ILC-LUS) for International Consensus Conference on Lung Ultrasound (ICC-LUS). International evidence-based recommendations for point-of-care lung ultrasound. *Intensive Care Med* 2012; **38**: 577-591 [PMID: [22392031](#) DOI: [10.1007/s00134-012-2513-4](#)]
  - 25 **Mojoli F**, Bouhemad B, Mongodi S, Lichtenstein D. Lung Ultrasound for Critically Ill Patients. *Am J Respir Crit Care Med* 2019; **199**: 701-714 [PMID: [30372119](#) DOI: [10.1164/rccm.201802-0236CI](#)]
  - 26 **Alzahrani SA**, Al-Salamah MA, Al-Madani WH, Elbarbary MA. Systematic review and meta-analysis for the use of ultrasound versus radiology in diagnosing of pneumonia. *Crit Ultrasound J* 2017; **9**: 6 [PMID: [28244009](#) DOI: [10.1186/s13089-017-0059-y](#)]
  - 27 **Tung-Chen Y**, Martí de Gracia M, Díez-Tascón A, Alonso-González R, Agudo-Fernández S, Parra-Gordo ML, Ossaba-Vélez S, Rodríguez-Fuertes P, Llamas-Fuentes R. Correlation between Chest Computed Tomography and Lung Ultrasonography in Patients with Coronavirus Disease 2019 (COVID-19). *Ultrasound Med Biol* 2020; **46**: 2918-2926 [PMID: [32771222](#) DOI: [10.1016/j.ultrasmedbio.2020.07.003](#)]
  - 28 **Poggiali E**, Dacrema A, Bastoni D, Tinelli V, Demichele E, Mateo Ramos P, Marcianò T, Silva M, Vercelli A, Magnacavallo A. Can Lung US Help Critical Care Clinicians in the Early Diagnosis of Novel Coronavirus (COVID-19) Pneumonia? *Radiology* 2020; **295**: E6 [PMID: [32167853](#) DOI: [10.1148/radiol.2020200847](#)]
  - 29 **Huang Y**, Wang S, Liu Y, Zhang Y, Zheng C, Zheng Y, Zhang C, Min W, Yu M, Hu M. A Preliminary Study on the Ultrasonic Manifestations of Peripulmonary Lesions of Non-Critical Novel Coronavirus Pneumonia (COVID-19) (February 26, 2020). [DOI: [10.2139/ssrn.3544750](#)]
  - 30 **Nouvenne A**, Zani MD, Milanese G, Parise A, Baciarello M, Bignami EG, Odone A, Sverzellati N, Meschi T, Ticinesi A. Lung Ultrasound in COVID-19 Pneumonia: Correlations with Chest CT on Hospital admission. *Respiration* 2020; **99**: 617-624 [PMID: [32570265](#) DOI: [10.1159/000509223](#)]
  - 31 **Peng QY**, Wang XT, Zhang LN; Chinese Critical Care Ultrasound Study Group (CCUSG). Findings of lung ultrasonography of novel corona virus pneumonia during the 2019-2020 epidemic. *Intensive Care Med* 2020; **46**: 849-850 [PMID: [32166346](#) DOI: [10.1007/s00134-020-05996-6](#)]
  - 32 **Volpicelli G**, Gargani L. Sonographic signs and patterns of COVID-19 pneumonia. *Ultrasound J* 2020; **12**: 22 [PMID: [32318891](#) DOI: [10.1186/s13089-020-00171-w](#)]
  - 33 **Millington SJ**, Koenig S, Mayo P, Volpicelli G. Lung Ultrasound for Patients With Coronavirus Disease 2019 Pulmonary Disease. *Chest* 2021; **159**: 205-211 [PMID: [32835709](#) DOI: [10.1016/j.chest.2020.08.2054](#)]
  - 34 **Gattinoni L**, Chiumello D, Caironi P, Busana M, Romitti F, Brazzi L, Camporota L. COVID-19 pneumonia: different respiratory treatments for different phenotypes? *Intensive Care Med* 2020; **46**: 1099-1102 [PMID: [32291463](#) DOI: [10.1007/s00134-020-06033-2](#)]
  - 35 **Volpicelli G**, Lamorte A, Villén T. What's new in lung ultrasound during the COVID-19 pandemic. *Intensive Care Med* 2020; **46**: 1445-1448 [PMID: [32367169](#) DOI: [10.1007/s00134-020-06048-9](#)]
  - 36 **Smith MJ**, Hayward SA, Innes SM, Miller ASC. Point-of-care lung ultrasound in patients with COVID-19 - a narrative review. *Anaesthesia* 2020; **75**: 1096-1104 [PMID: [32275766](#) DOI: [10.1111/anae.15082](#)]
  - 37 **Lichtenstein DA**. BLUE-protocol and FALLS-protocol: two applications of lung ultrasound in the critically ill. *Chest* 2015; **147**: 1659-1670 [PMID: [26033127](#) DOI: [10.1378/chest.14-1313](#)]
  - 38 **Soldati G**, Smargiassi A, Inchingolo R, Buonsenso D, Perrone T, Briganti DF, Perlini S, Torri E, Mariani A, Mossolani EE, Tursi F, Mento F, Demi L. Proposal for International Standardization of the Use of Lung Ultrasound for Patients With COVID-19: A Simple, Quantitative, Reproducible Method. *J Ultrasound Med* 2020; **39**: 1413-1419 [PMID: [32227492](#) DOI: [10.1002/jum.15285](#)]
  - 39 **Vetruogno L**, Bove T, Orso D, Barbariol F, Bassi F, Boero E, Ferrari G, Kong R. Our Italian experience using lung ultrasound for identification, grading and serial follow-up of severity of lung involvement for management of patients with COVID-19. *Echocardiography* 2020; **37**: 625-627

- [PMID: 32239532 DOI: 10.1111/echo.14664]
- 40 **Istvan-Adorjan S**, Ágoston G, Varga A, Cotoi OS, Frigy A. Pathophysiological background and clinical practice of lung ultrasound in COVID-19 patients: A short review. *Anatol J Cardiol* 2020; **24**: 76-80 [PMID: 32749247 DOI: 10.14744/AnatolJCardiol.2020.33645]
  - 41 **Prat G**, Guinard S, Bizien N, Nowak E, Tonnelier JM, Alavi Z, Renault A, Boles JM, L'Her E. Can lung ultrasonography predict prone positioning response in acute respiratory distress syndrome patients? *J Crit Care* 2016; **32**: 36-41 [PMID: 26806842 DOI: 10.1016/j.jccr.2015.12.015]
  - 42 **Wang XT**, Ding X, Zhang HM, Chen H, Su LX, Liu DW; Chinese Critical Ultrasound Study Group (CCUSG). Lung ultrasound can be used to predict the potential of prone positioning and assess prognosis in patients with acute respiratory distress syndrome. *Crit Care* 2016; **20**: 385 [PMID: 27899151 DOI: 10.1186/s13054-016-1558-0]
  - 43 **Sun Z**, Zhang N, Li Y, Xu X. A systematic review of chest imaging findings in COVID-19. *Quant Imaging Med Surg* 2020; **10**: 1058-1079 [PMID: 32489929 DOI: 10.21037/qims-20-564]
  - 44 **Ai T**, Yang Z, Hou H, Zhan C, Chen C, Lv W, Tao Q, Sun Z, Xia L. Correlation of Chest CT and RT-PCR Testing for Coronavirus Disease 2019 (COVID-19) in China: A Report of 1014 Cases. *Radiology* 2020; **296**: E32-E40 [PMID: 32101510 DOI: 10.1148/radiol.202000642]
  - 45 **Kim H**, Hong H, Yoon SH. Diagnostic Performance of CT and Reverse Transcriptase Polymerase Chain Reaction for Coronavirus Disease 2019: A Meta-Analysis. *Radiology* 2020; **296**: E145-E155 [PMID: 32301646 DOI: 10.1148/radiol.202001343]
  - 46 **Simpson S**, Kay FU, Abbara S, Bhalla S, Chung JH, Chung M, Henry TS, Kanne JP, Kligerman S, Ko JP, Litt H. Radiological Society of North America Expert Consensus Statement on Reporting Chest CT Findings Related to COVID-19. Endorsed by the Society of Thoracic Radiology, the American College of Radiology, and RSNA - Secondary Publication. *J Thorac Imaging* 2020; **35**: 219-227 [PMID: 32324653 DOI: 10.1097/RTI.0000000000000524]
  - 47 **Waller JV**, Kaur P, Tucker A, Lin KK, Diaz MJ, Henry TS, Hope M. Diagnostic Tools for Coronavirus Disease (COVID-19): Comparing CT and RT-PCR Viral Nucleic Acid Testing. *AJR Am J Roentgenol* 2020; **215**: 834-838 [PMID: 32412790 DOI: 10.2214/AJR.20.23418]
  - 48 **Xie X**, Zhong Z, Zhao W, Zheng C, Wang F, Liu J. Chest CT for Typical Coronavirus Disease 2019 (COVID-19) Pneumonia: Relationship to Negative RT-PCR Testing. *Radiology* 2020; **296**: E41-E45 [PMID: 32049601 DOI: 10.1148/radiol.202000343]
  - 49 **Neri E**, Miele V, Coppola F, Grassi R. Use of CT and artificial intelligence in suspected or COVID-19 positive patients: statement of the Italian Society of Medical and Interventional Radiology. *Radiol Med* 2020; **125**: 505-508 [PMID: 32350794 DOI: 10.1007/s11547-020-01197-9]
  - 50 **Li Y**, Xia L. Coronavirus Disease 2019 (COVID-19): Role of Chest CT in Diagnosis and Management. *AJR Am J Roentgenol* 2020; **214**: 1280-1286 [PMID: 32130038 DOI: 10.2214/AJR.20.22954]
  - 51 **Li M**. Chest CT features and their role in COVID-19. *Radiol Infect Dis* 2020; **7**: 51-54 [PMID: 32309528 DOI: 10.1016/j.jrid.2020.04.001]
  - 52 **Hani C**, Trieu NH, Saab I, Dangeard S, Bennani S, Chassagnon G, Revel MP. COVID-19 pneumonia: A review of typical CT findings and differential diagnosis. *Diagn Interv Imaging* 2020; **101**: 263-268 [PMID: 32291197 DOI: 10.1016/j.diii.2020.03.014]
  - 53 **Chung M**, Bernheim A, Mei X, Zhang N, Huang M, Zeng X, Cui J, Xu W, Yang Y, Fayad ZA, Jacobi A, Li K, Li S, Shan H. CT Imaging Features of 2019 Novel Coronavirus (2019-nCoV). *Radiology* 2020; **295**: 202-207 [PMID: 32017661 DOI: 10.1148/radiol.202000230]
  - 54 **Ye Z**, Zhang Y, Wang Y, Huang Z, Song B. Chest CT manifestations of new coronavirus disease 2019 (COVID-19): a pictorial review. *Eur Radiol* 2020; **30**: 4381-4389 [PMID: 32193638 DOI: 10.1007/s00330-020-06801-0]
  - 55 **Pan F**, Ye T, Sun P, Gui S, Liang B, Li L, Zheng D, Wang J, Hesketh RL, Yang L, Zheng C. Time Course of Lung Changes at Chest CT during Recovery from Coronavirus Disease 2019 (COVID-19). *Radiology* 2020; **295**: 715-721 [PMID: 32053470 DOI: 10.1148/radiol.202000370]
  - 56 **Zhao W**, Zhong Z, Xie X, Yu Q, Liu J. Relation Between Chest CT Findings and Clinical Conditions of Coronavirus Disease (COVID-19) Pneumonia: A Multicenter Study. *AJR Am J Roentgenol* 2020; **214**: 1072-1077 [PMID: 32125873 DOI: 10.2214/AJR.20.22976]
  - 57 **Salehi S**, Abedi A, Balakrishnan S, Gholamrezaezhad A. Coronavirus Disease 2019 (COVID-19): A Systematic Review of Imaging Findings in 919 Patients. *AJR Am J Roentgenol* 2020; **215**: 87-93 [PMID: 32174129 DOI: 10.2214/AJR.20.23034]
  - 58 **Carotti M**, Salaffi F, Sarzi-Puttini P, Agostini A, Borgheresi A, Minorati D, Galli M, Marotto D, Giovagnoni A. Chest CT features of coronavirus disease 2019 (COVID-19) pneumonia: key points for radiologists. *Radiol Med* 2020; **125**: 636-646 [PMID: 32500509 DOI: 10.1007/s11547-020-01237-4]
  - 59 **Bai HX**, Hsieh B, Xiong Z, Halsey K, Choi JW, Tran TML, Pan I, Shi LB, Wang DC, Mei J, Jiang XL, Zeng QH, Eglin TK, Hu PF, Agarwal S, Xie FF, Li S, Healey T, Atalay MK, Liao WH. Performance of Radiologists in Differentiating COVID-19 from Non-COVID-19 Viral Pneumonia at Chest CT. *Radiology* 2020; **296**: E46-E54 [PMID: 32155105 DOI: 10.1148/radiol.202000823]
  - 60 **Li K**, Wu J, Wu F, Guo D, Chen L, Fang Z, Li C. The Clinical and Chest CT Features Associated With Severe and Critical COVID-19 Pneumonia. *Invest Radiol* 2020; **55**: 327-331 [PMID: 32118615 DOI: 10.1097/RLI.0000000000000672]
  - 61 **Shi H**, Han X, Jiang N, Cao Y, Alwalid O, Gu J, Fan Y, Zheng C. Radiological findings from 81 patients with COVID-19 pneumonia in Wuhan, China: a descriptive study. *Lancet Infect Dis* 2020;

- 20: 425-434 [PMID: [32105637](#) DOI: [10.1016/S1473-3099\(20\)30086-4](#)]
- 62 **Spagnolo P**, Balestro E, Aliberti S, Cocconcelli E, Biondini D, Casa GD, Sverzellati N, Maher TM. Pulmonary fibrosis secondary to COVID-19: a call to arms? *Lancet Respir Med* 2020; **8**: 750-752 [PMID: [32422177](#) DOI: [10.1016/S2213-2600\(20\)30222-8](#)]
- 63 **Capitanio S**, Nordin AJ, Noraini AR, Rossetti C. PET/CT in nononcological lung diseases: current applications and future perspectives. *Eur Respir Rev* 2016; **25**: 247-258 [PMID: [27581824](#) DOI: [10.1183/16000617.0051-2016](#)]
- 64 **de Prost N**, Tucci MR, Melo MF. Assessment of lung inflammation with 18F-FDG PET during acute lung injury. *AJR Am J Roentgenol* 2010; **195**: 292-300 [PMID: [20651183](#) DOI: [10.2214/AJR.10.4499](#)]
- 65 **Brust D**, Polis M, Davey R, Hahn B, Bacharach S, Whatley M, Fauci AS, Carrasquillo JA. Fluorodeoxyglucose imaging in healthy subjects with HIV infection: impact of disease stage and therapy on pattern of nodal activation. *AIDS* 2006; **20**: 495-503 [PMID: [16470113](#) DOI: [10.1097/01.aids.0000210603.40267.29](#)]
- 66 **Chefer S**, Thomasson D, Seidel J, Reba RC, Bohannon JK, Lackemeyer MG, Bartos C, Sayre PJ, Bollinger L, Hensley LE, Jahrling PB, Johnson RF. Modeling [(18)F]-FDG lymphoid tissue kinetics to characterize nonhuman primate immune response to Middle East respiratory syndrome-coronavirus aerosol challenge. *EJNMMI Res* 2015; **5**: 65 [PMID: [26573211](#) DOI: [10.1186/s13550-015-0143-x](#)]
- 67 **Jonsson CB**, Camp JV, Wu A, Zheng H, Kraenzle JL, Biller AE, Vanover CD, Chu YK, Ng CK, Proctor M, Sherwood L, Steffen MC, Mollura DJ. Molecular imaging reveals a progressive pulmonary inflammation in lower airways in ferrets infected with 2009 H1N1 pandemic influenza virus. *PLoS One* 2012; **7**: e40094 [PMID: [22911695](#) DOI: [10.1371/journal.pone.0040094](#)]
- 68 **Wallace M**, Pyzalski R, Horejsh D, Brown C, Djavani M, Lu Y, Hanson JM, Mitchen JL, Perlman SB, Pauza CD. Whole body positron emission tomography imaging of activated lymphoid tissues during acute simian-human immunodeficiency virus 89.6PD infection in rhesus macaques. *Virology* 2000; **274**: 255-261 [PMID: [10964769](#) DOI: [10.1006/viro.2000.0479](#)]
- 69 **Dietz M**, Chironi G, Claessens YE, Farhad RL, Rouquette I, Serrano B, Nataf V, Hugonnet F, Paulmier B, Berthier F, Keita-Perse O, Giammarile F, Perrin C, Faraggi M; MONACOVIR Group. COVID-19 pneumonia: relationship between inflammation assessed by whole-body FDG PET/CT and short-term clinical outcome. *Eur J Nucl Med Mol Imaging* 2021; **48**: 260-268 [PMID: [32712702](#) DOI: [10.1007/s00259-020-04968-8](#)]
- 70 **Qin C**, Liu F, Yen TC, Lan X. <sup>18</sup>F-FDG PET/CT findings of COVID-19: a series of four highly suspected cases. *Eur J Nucl Med Mol Imaging* 2020; **47**: 1281-1286 [PMID: [32088847](#) DOI: [10.1007/s00259-020-04734-w](#)]
- 71 **Setti L**, Kirienko M, Dalto SC, Bonacina M, Bombardieri E. FDG-PET/CT findings highly suspicious for COVID-19 in an Italian case series of asymptomatic patients. *Eur J Nucl Med Mol Imaging* 2020; **47**: 1649-1656 [PMID: [32342191](#) DOI: [10.1007/s00259-020-04819-6](#)]
- 72 **Zou S**, Zhu X. FDG PET/CT of COVID-19. *Radiology* 2020; **296**: E118 [PMID: [32142399](#) DOI: [10.1148/radiol.2020200770](#)]
- 73 **Polverari G**, Arena V, Ceci F, Pelosi E, Ianniello A, Poli E, Sandri A, Penna D. <sup>18</sup>F-Fluorodeoxyglucose Uptake in Patient With Asymptomatic Severe Acute Respiratory Syndrome Coronavirus 2 (Coronavirus Disease 2019) Referred to Positron Emission Tomography/Computed Tomography for NSCLC Restaging. *J Thorac Oncol* 2020; **15**: 1078-1080 [PMID: [32243920](#) DOI: [10.1016/j.jtho.2020.03.022](#)]
- 74 **Lütje S**, Marinova M, Kütting D, Attenberger U, Essler M, Bundschuh RA. Nuclear medicine in SARS-CoV-2 pandemic: 18F-FDG-PET/CT to visualize COVID-19. *Nuklearmedizin* 2020; **59**: 276-280 [PMID: [32259853](#) DOI: [10.1055/a-1152-2341](#)]
- 75 **Bellani G**, Messa C, Guerra L, Spagnolli E, Foti G, Patroniti N, Fumagalli R, Musch G, Fazio F, Pesenti A. Lungs of patients with acute respiratory distress syndrome show diffuse inflammation in normally aerated regions: a [18F]-fluoro-2-deoxy-D-glucose PET/CT study. *Crit Care Med* 2009; **37**: 2216-2222 [PMID: [19487931](#) DOI: [10.1097/CCM.0b013e3181aab31f](#)]
- 76 **Fang Y**, Zhang H, Xie J, Lin M, Ying L, Pang P, Ji W. Sensitivity of Chest CT for COVID-19: Comparison to RT-PCR. *Radiology* 2020; **296**: E115-E117 [PMID: [32073353](#) DOI: [10.1148/radiol.2020200432](#)]
- 77 **Yang W**, Cao Q, Qin L, Wang X, Cheng Z, Pan A, Dai J, Sun Q, Zhao F, Qu J, Yan F. Clinical characteristics and imaging manifestations of the 2019 novel coronavirus disease (COVID-19): A multi-center study in Wenzhou city, Zhejiang, China. *J Infect* 2020; **80**: 388-393 [PMID: [32112884](#) DOI: [10.1016/j.jinf.2020.02.016](#)]



Published by **Baishideng Publishing Group Inc**  
7041 Koll Center Parkway, Suite 160, Pleasanton, CA 94566, USA

**Telephone:** +1-925-3991568

**E-mail:** [bpgoffice@wjgnet.com](mailto:bpgoffice@wjgnet.com)

**Help Desk:** <https://www.f6publishing.com/helpdesk>

<https://www.wjgnet.com>

