

Pathogenesis of autoimmune hepatitis

not fully understood

Pathogenesis of autoimmune hepatitis. The mechanisms underlying the pathogenesis of autoimmune hepatitis are **not fully understood**, though there is growing evidence that genetic predisposition, molecular mimicry and/or impairment of regulatory T-cells are involved in the initiation and perpetuation of the autoimmune liver attack.

Author: Rodrigo Liberal, Rodrigo Liberal, Maria Serena Longhi, Giorgia Mieli-Vergani, Diego Vergani

Cited by: 133

Publish Year: 2011

[Pathogenesis of autoimmune hepatitis - ScienceDirect](#)

www.sciencedirect.com/science/article/pii/S1521691811000862

Was this helpful?  

PEOPLE ALSO ASK

How is autoimmune hepatitis related to the immune system? ▾

What are the different types of autoimmune hepatitis? ▾

Who is more likely to develop autoimmune hepatitis? ▾

Can a person with autoimmune hepatitis have celiac disease? ▾

[Feedback](#)

[Understanding the pathogenesis of autoimmune hepatitis.](#)

<https://www.ncbi.nlm.nih.gov/pubmed/11316174>

RESULTS: Autoimmune hepatitis is a consequence of autoantigen exposure, genetic predisposition, and defective immunoregulatory mechanisms. Autoantigen is optimally presented

Microsoft Bing

国内版 国际版

Pathogenesis of autoimmune hepatitis

ALL

IMAGES

VIDEOS

546,000 Results Any time

Pathogenesis of autoimmune hepatitis

not fully understood

Pathogenesis of autoimmune hepatitis. The mechanisms underlying the pathogenesis of autoimmune hepatitis are **not fully understood**, though there is growing evidence that genetic predisposition, molecular mimicry and/or impairment of regulatory T-cells are involved in the initiation and perpetuation of the autoimmune liver attack.

Author: Rodrigo Liberal, Maria Serena Longhi, Giorgia Mieli-Vergani, Diego Vergani

Cited by: 139

Publish Year: 2011

[Pathogenesis of autoimmune hepatitis - ScienceDirect](#)

Autoimmune Hepatitis

Medical Condition

Healthy Liver

Scarring of the liver

A chronic disease that causes inflammation in liver when the body's immune system attacks liver cells. This results in scarring of the liver and finally to liver failure.

- Very rare (Fewer than 20,000 cases per year in US)
- Requires lab test or imaging
- Treatments can help manage condition, no known cure

国内版

国际版

Pathogenesis of autoimmune hepatitis



ALL

IMAGES

VIDEOS

553,000 Results

Any time ▾

Pathogenesis of autoimmune hepatitis - PubMed

<https://pubmed.ncbi.nlm.nih.gov/10424247>

Abstract. Autoimmune hepatitis (AIH) is an idiopathic disorder affecting the **hepatic** parenchyma. There are no morphological features that are pathognomonic of the condition but the characteristic histological picture is that of an interface hepatitis without other changes that are more typical of other liver diseases.

Cited by: 117

Author: I.G. McFarlane

Publish Year: 1999

Pathology of autoimmune hepatitis

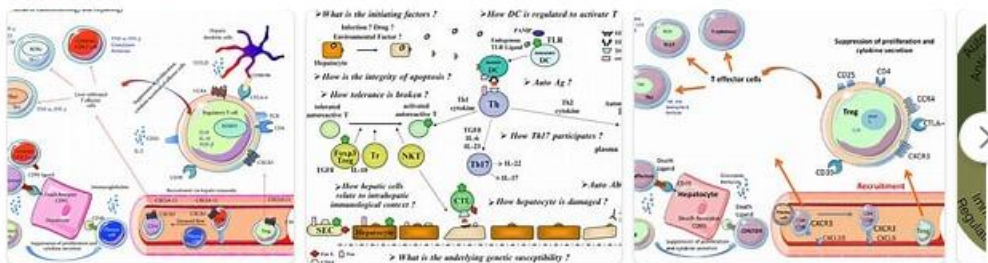
<https://www.ncbi.nlm.nih.gov/pmc/articles/PMC8299324>

Jun 01, 2021 · Autoimmune hepatitis (AIH) is a chronic progressive liver disease of unknown etiology.

The **pathogenesis of AIH** is complex and involves interactions between tolerant liver, environmental triggers, and dysregulated immunological mechanisms. Genetic factors influence an individual's susceptibility to developing AIH 1,2.

Images of Pathogenesis of Autoimmune Hepatitis

<bing.com/images>



[See all images >](#)

Can Understanding the Pathogenesis of Autoimmune ...

<https://www.ncbi.nlm.nih.gov/pubmed/28468007>

The pathogenesis of autoimmune hepatitis is still poorly understood and therefore the therapy