

Name of Journal: *World Journal of Gastroenterology*

Manuscript NO: 66133

Manuscript Type: MINIREVIEWS

Liver-spleen axis dysfunction in Covid-19

Sara Cococcia, Marco Vincenzo Lenti, Giovanni Santacroce, Giovanna Achilli, Federica Borrelli de Andreis, Antonio Di Sabatino

Abstract

Coronavirus disease 2019 (Covid-19), caused by the novel severe acute respiratory syndrome coronavirus 2 (SARS-CoV-2), is an acute infectious disease that spreads

Match Overview

1	Crossref 141 words Marco Vincenzo Lenti, Nicola Aronico, Ivan Pellegrino, Emanuela Boveri et al. "Depletion of circulating IgM memory B cells..."	4%
2	Internet 42 words crawled on 10-Aug-2020 www.nature.com	1%
3	Crossref 35 words Giovanni Marasco, Marco Vincenzo Lenti, Cesare Cremon, Maria Raffaella Barbaro et al. "Implications of SARS-CoV-2 in..."	1%
4	Internet 34 words crawled on 19-Mar-2021 omronhealthcare.com	1%
5	Internet 17 words crawled on 04-Jan-2021 www.fondazione-menarini.it	1%

Liver-spleen axis dysfunction in Covid-19



Sign in

ALL

IMAGES

VIDEOS

2,000,000 Results

Any time ▾

[Liver injury in COVID-19: management and challenges - The ...](https://www.thelancet.com/journals/langas/article/PIIS2468-1253(20)30057-1/fulltext)

[https://www.thelancet.com/journals/langas/article/PIIS2468-1253\(20\)30057-1/fulltext](https://www.thelancet.com/journals/langas/article/PIIS2468-1253(20)30057-1/fulltext)

Cited by: 948

Author: Chao Zhang, Lei Shi, Fu-Sheng Wang

Publish Year: 2020

In December, 2019, an outbreak of a novel coronavirus (severe acute respiratory syndrome coronavirus 2 [SARS-CoV-2], previously 2019-nCoV) started in Wuhan, China, and has since become a global threat ...

COVID-19 liver damage may be more common than ...

<https://www.medicalnewstoday.com/articles/covid-19...> ▾

Estimated Reading Time: 4 mins

Aug 12, 2020 · An analysis of data from China suggests that around 15% of hospitalized **COVID-19** patients had abnormal liver test results. However, 42–67% of the patients in ...



See more

Liver-spleen axis dysfunction in COVID-19



Sign in

ALL

IMAGES

VIDEOS



Add the Give with Bing extension >

3,000,000 Results

Any time ▼

COVID-19 and the liver

<https://pubmed.ncbi.nlm.nih.gov/32553666>

The current **coronavirus disease** 2019 (COVID-19) pandemic, caused by the severe acute respiratory syndrome **coronavirus**-2 (SARS-CoV-2), has become a major public health crisis over the past few months. Overall case fatality rates range between 2-6%; however, the ...

Cited by: 166

Author: Dinesh Jothimani, Radhika Venugopal, M...

Publish Year: 2020



See more

Significance of liver dysfunction associated with ...

<https://pubmed.ncbi.nlm.nih.gov/32776161>

Liver dysfunction has been reported to occur frequently in patients with COVID-19, although its significance has not yet been elucidated. Methods: The subjects were 35 patients with COVID-19, and

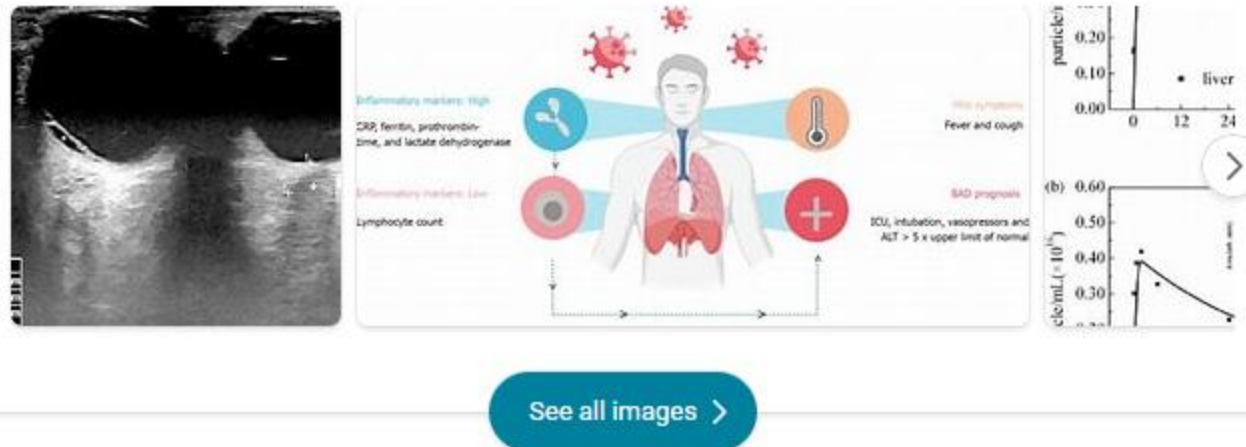
All Images Videos

3,000,000 Results

Any time ▾

Images of Liver-spleen Axis Dysfunction in COVID-19

bing.com/images



See all images >

Search Tools

Turn off Hover Translation (关闭取词)

Remarkable gastrointestinal and liver manifestations of ...

<https://www.ncbi.nlm.nih.gov/pmc/articles/PMC8283617>

Jul 06, 2021 · COVID-19 may do harm to **liver** and can ultimately result in severe body damage. On one side, it is known that non-alcoholic fatty **liver disease** is a major cause of **liver** cirrhosis and hepatocellular carcinoma.

Author: Li-Guang Fang, Quan Zhou **Publish Year:** 2021

Liver injury in patients with COVID-19: clinical profiles ...

<https://pubmed.ncbi.nlm.nih.gov/32886333>

Conclusions: Some of the patients with COVID-19 displayed **liver** damage revealed by **liver** functional tests and upper abdominal CT imaging, and the severity of COVID-19 patients correlated with some of **liver** functional tests and CT signs; thus, it will allow an earlier identification of high-risk patients for early effective intervention.

Cited by: 13 **Author:** Ping Lei, Lan Zhang, Ping Han, Chuanshen...
Publish Year: 2020

COVID-19 and the liver

<https://pubmed.ncbi.nlm.nih.gov/32553666>

The current **coronavirus disease** 2019 (COVID-19) pandemic, caused by the severe acute respiratory syndrome **coronavirus-2** (SARS-CoV-2), has become a major public health crisis over the past few months. Overall case fatality rates range between 2-6%; however, the ...

Cited by: 166 **Author:** Dinesh Jothimani, Radhika Venugopal, Mo...