

Name of Journal: *World Journal of Gastrointestinal Surgery*

Manuscript NO: 67314

Manuscript Type: META-ANALYSIS

Genitourinary function and defecation after colorectal cancer surgery with low- and high-ligation of inferior mesenteric artery: A meta-analysis

Xiao Bai, Chun-Dong Zhang, Jun-Peng Pei, Dong-Qiu Dai

Abstract

BACKGROUND

The effect of low ligation (LL) *vs* high ligation (HL) of the inferior mesenteric artery (IMA) on functional outcomes during sigmoid colon and rectal cancer surgery,

Match Overview

1	Internet 50 words crawled on 17-Mar-2021 tcr.amegroups.com	2%
2	Crossref Posted Content 31 words Weipeng Ye, Zhipeng Zhu, Xiaofang Wu, Sihao Lin, Jiu Hua Xu, Lulu Li, Zhengjie Huang. "Technical Feasibility and Oncolog	1%
3	Internet 24 words crawled on 03-Aug-2019 www.tandfonline.com	1%
4	Internet 16 words crawled on 02-Dec-2017 www.dovepress.com	1%
5	Crossref Posted Content 15 words Ruize Qu, Fei Li, Bingyan Wang, Siyi Lu, Junren Ma, Yanpeng Ma, Yan Meng, Junwei Wang, Xin Zhou, Wei Fu. "Is the pi...	1%
6	Internet 15 words crawled on 31-May-2021 juniperpublishers.com	1%

ALL

IMAGES

VIDEOS

8,380 Results

Any time ▾

Changes to gastrointestinal function after surgery for ...

<https://www.sciencedirect.com/science/article/pii/S1521691820300408>

Oct 01, 2020 · Oct 01, 2020 · 3.1. Physiology and risk factors. Recovery of gastrointestinal **function** following **colorectal surgery** is a key marker of surgical success. Ileus refers to a delay in recovery of gastrointestinal **function after surgery** and can be viewed as an inevitable inflammatory process due in part to bowel manipulation.

High and Low Inferior Mesenteric Artery Ligation ...

https://link.springer.com/chapter/10.1007/978-3-319-63204-9_7 ▾

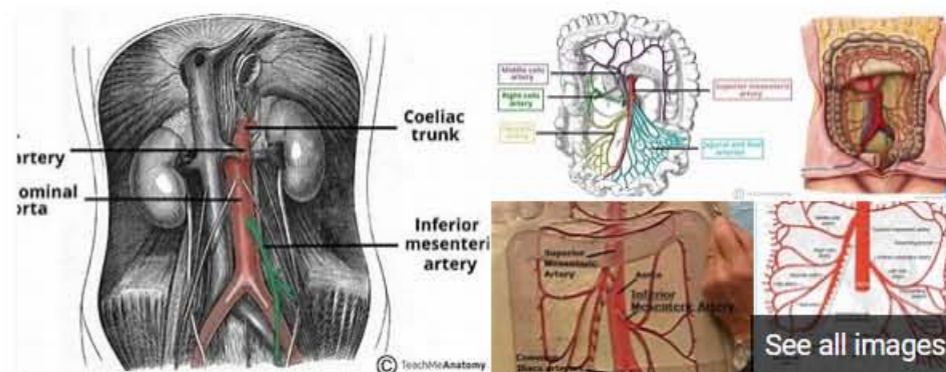
Nov 27, 2017 · The **inferior mesenteric artery** supplies the descending colon, sigmoid colon, and rectum, and the competent surgeon must decide whether a high or **low** ligation should be performed before proceeding with its ligation. The decision requires technical, anatomic, and oncologic reasoning to inform the surgeon and will depend on the location and extent ...

Author: Christopher F. McNicol, Ovunc Bardakc... **Publish Year:** 2018

Total Mesorectal Excision for Rectal Cancer With Emphasis ...

<https://pubmed.ncbi.nlm.nih.gov/26141555>

The primary goal of surgical intervention for rectal **cancer** is to achieve an oncologic cure while preserving **function**. Since the introduction of total mesorectal excision (TME), the oncologic outcome has improved greatly in terms of local recurrence and **cancer**-specific survival. However, there are s ...



Inferior mesenteric artery

In human anatomy, the inferior mesenteric artery, often abbreviated as IMA, is the third main branch of the abdominal aorta and arises at the level of L3, supplying the large intestine from the distal transverse colon to the upper part of the anal canal. The regions supplied by the IMA are the descending colon, the sigmoid colon, and part of the rectum.

 Wikipedia

People also search for: Superior mesenteric artery · Celiac artery · Abdominal aorta · Common iliac artery · Internal iliac artery +

Genitourinary function and defecation after colorectal cancer surger



ALL

IMAGES

VIDEOS

7,420 Results

Any time ▼

High versus low ligation of inferior mesenteric artery ...

<https://journals.lww.com/md-journal/Fulltext/2020/...>

[34]. Bonnet S, Berger A, Hentati N, et al. High tie versus **low** tie vascular ligation of the **inferior mesenteric artery** in **colorectal cancer surgery**: impact on the gain in colon length and implications on the feasibility of anastomoses. Dis Colon Rectum 2012;55:515–21.

Dissection of the inferior mesenteric vein versus of the ...

<https://link.springer.com/article/10.1186/s12894-019-0501-5> ▼

Aug 05, 2019 · Total Mesorectal Excision (TME) is the standard surgical technique for the treatment of



See

7,430 Results Any time ▾

High versus low ligation of inferior mesenteric artery ...

<https://journals.lww.com/md-journal/Fulltext/2020/...>

[34]. Bonnet S, Berger A, Hentati N, et al. High tie versus low tie vascular ligation of the inferior mesenteric artery in colorectal cancer surgery: impact on the gain in colon length and implications on the feasibility of anastomoses. Dis Colon Rectum 2012;55:515–21.

High ligation of the inferior mesenteric artery in rectal ...

<https://www.researchgate.net/publication/232229453...>

In rectal cancer surgery, it is unclear whether the inferior mesenteric artery (IMA) should be ligated as high as possible, at its origin, or low, below the origin of the left colic artery.

Estimated Reading Time: 11 mins

High Versus Low Ligation of the Inferior Mesenteric Artery ...

<https://journals.lww.com/aosopen/Fulltext/2020/...>

Bonnet S, Berger A, Hentati N, et al. High tie versus low tie vascular ligation of the inferior mesenteric artery in colorectal cancer surgery: impact on the gain in colon length and implications on the feasibility of anastomoses. Dis Colon Rectum. 2012; 55:515–521.

High and Low Inferior Mesenteric Artery Ligation ...

https://link.springer.com/chapter/10.1007/978-3-319-63204-9_7 ▾

Nov 27, 2017 · The inferior mesenteric artery supplies the descending colon, sigmoid colon, and rectum, and the competent surgeon must decide whether a high or low ligation should be performed before proceeding with its ligation. The decision requires technical, anatomic, and oncologic reasoning to inform the surgeon and will depend on the location and extent ...

Author: Christopher F. McNicoll, Ovunc Bardakc... Publish Year: 2018

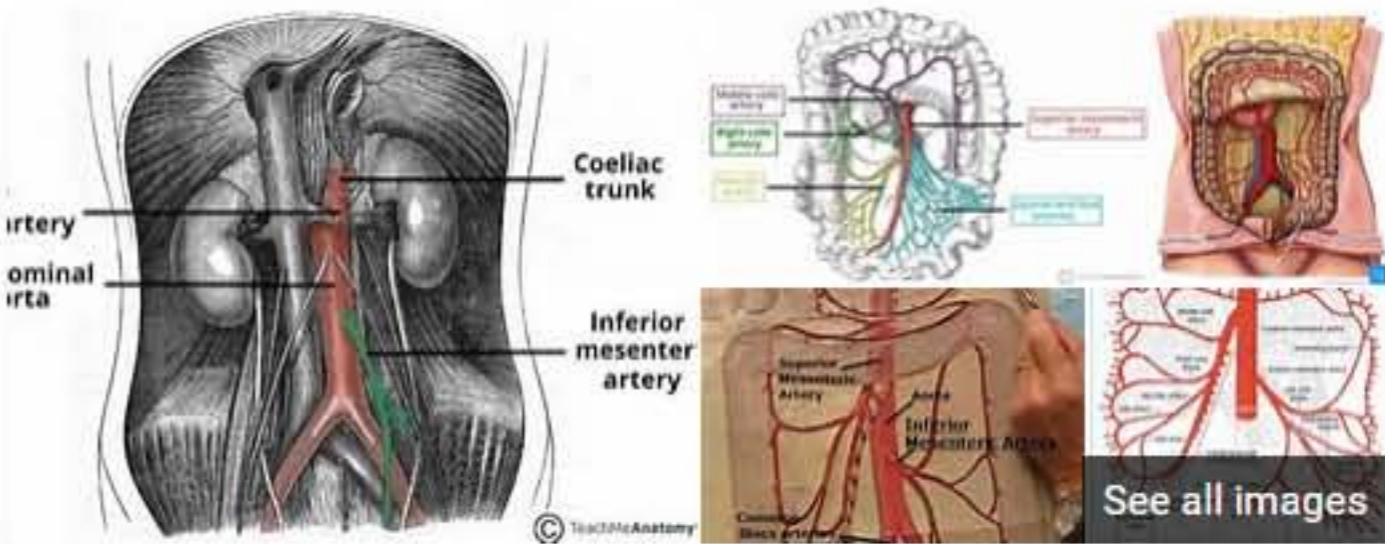
Short- and long-term outcomes of rectal cancer patients ...

<https://www.nature.com/articles/s41598-020-72303-0>

Sep 18, 2020 · Si, M. B. et al. Lymph node yield, survival benefit, and safety of high and low ligation of the inferior mesenteric artery in colorectal cancer surgery: a systematic review and meta-analysis. Int. J.

Cited by: 2 Author: Chenghai Zhang, Lei Chen, Ming Cui, Jiadi ...

Publish Year: 2020



Inferior mesenteric artery

In human anatomy, the inferior mesenteric artery, often abbreviated as IMA, is the third main branch of the abdominal aorta and arises at the level of L3, supplying the large intestine from the distal transverse colon to the upper part of the anal canal. The regions supplied by the IMA are the descending colon, the sigmoid colon, and part of the rectum.



People also search for: Superior mesenteric artery · Celiac artery · Abdominal aorta · Common iliac artery · Internal iliac artery +

Data from: Wikipedia
Suggest an edit