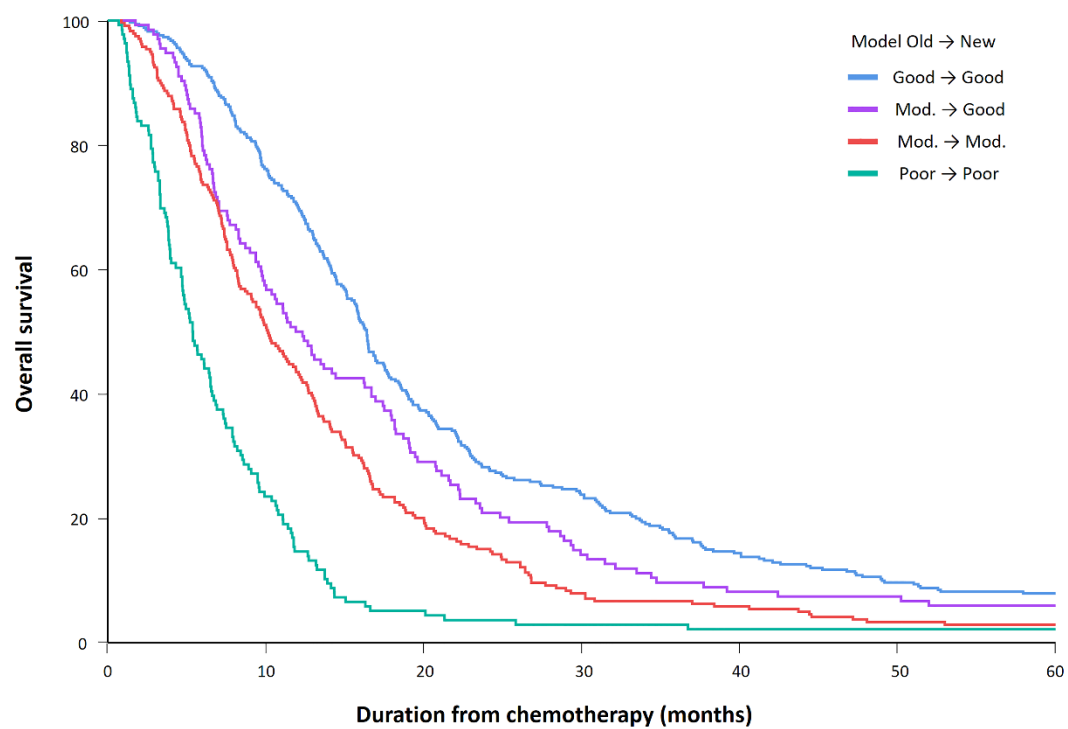
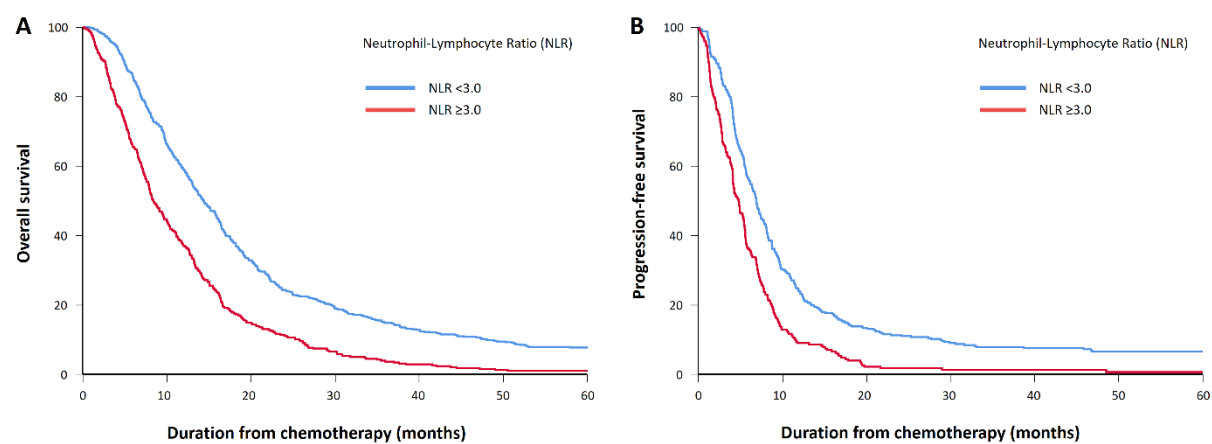


Supplementary Figure 1 Area under the receiver operating characteristic curve to determine the optimal cutoff level of the neutrophil-lymphocyte ratio per Youden's J statistic in the training set.



Supplementary Figure 2 Comparison of overall survival curves according to risk group between the old and new models in the validation set.



Supplementary Figure 3 Overall survival (A) and progression-free survival (B) curves according to neutrophil-lymphocyte ratio status in the validation set.

Supplementary Table 1 Comparison of risk group distribution between the old and new models in the validation set

Validation set	New model			Total
	Good	Moderate	Poor	
Old model				
Good	340 (37%)	32 (4%)	-	372 (41%)
Moderate	134 (15%)	239 (26%)	11 (1%)	384 (42%)
Poor	-	20 (2%)	136 (15%)	156 (17%)
Total	474 (52%)	291 (32%)	147 (16%)	912 (100%)
Reclassified risk groups				Median OS (95% CI)
Good → Good				17.0 mo (15.3–18.7)
Moderate → Good				14.1 mo (11.9–16.4)
Moderate → Moderate				10.6 mo (9.2–12.1)
Poor → Poor				4.7 mo (3.8–5.6)
OS: Overall survival.				