

# World Journal of *Clinical Cases*

*World J Clin Cases* 2022 June 26; 10(18): 5934-6340



### MINIREVIEWS

- 5934** Development of clustered regularly interspaced short palindromic repeats/CRISPR-associated technology for potential clinical applications  
*Huang YY, Zhang XY, Zhu P, Ji L*
- 5946** Strategies and challenges in treatment of varicose veins and venous insufficiency  
*Gao RD, Qian SY, Wang HH, Liu YS, Ren SY*
- 5957** Diabetes mellitus susceptibility with varied diseased phenotypes and its comparison with phenome interactome networks  
*Rout M, Kour B, Vuree S, Lulu SS, Medicherla KM, Suravajhala P*

### ORIGINAL ARTICLE

#### Clinical and Translational Research

- 5965** Identification of potential key molecules and signaling pathways for psoriasis based on weighted gene co-expression network analysis  
*Shu X, Chen XX, Kang XD, Ran M, Wang YL, Zhao ZK, Li CX*
- 5984** Construction and validation of a novel prediction system for detection of overall survival in lung cancer patients  
*Zhong C, Liang Y, Wang Q, Tan HW, Liang Y*

#### Case Control Study

- 6001** Effectiveness and postoperative rehabilitation of one-stage combined anterior-posterior surgery for severe thoracolumbar fractures with spinal cord injury  
*Zhang B, Wang JC, Jiang YZ, Song QP, An Y*

#### Retrospective Study

- 6009** Prostate sclerosing adenopathy: A clinicopathological and immunohistochemical study of twelve patients  
*Feng RL, Tao YP, Tan ZY, Fu S, Wang HF*
- 6021** Value of magnetic resonance diffusion combined with perfusion imaging techniques for diagnosing potentially malignant breast lesions  
*Zhang H, Zhang XY, Wang Y*
- 6032** Scar-centered dilation in the treatment of large keloids  
*Wu M, Gu JY, Duan R, Wei BX, Xie F*
- 6039** Application of a novel computer-assisted surgery system in percutaneous nephrolithotomy: A controlled study  
*Qin F, Sun YF, Wang XN, Li B, Zhang ZL, Zhang MX, Xie F, Liu SH, Wang ZJ, Cao YC, Jiao W*

- 6050** Influences of etiology and endoscopic appearance on the long-term outcomes of gastric antral vascular ectasia

*Kwon HJ, Lee SH, Cho JH*

#### Randomized Controlled Trial

- 6060** Evaluation of the clinical efficacy and safety of TST33 mega hemorrhoidectomy for severe prolapsed hemorrhoids

*Tao L, Wei J, Ding XF, Ji LJ*

- 6069** Sequential chemotherapy and icotinib as first-line treatment for advanced epidermal growth factor receptor-mutated non-small cell lung cancer

*Sun SJ, Han JD, Liu W, Wu ZY, Zhao X, Yan X, Jiao SC, Fang J*

#### Randomized Clinical Trial

- 6082** Impact of preoperative carbohydrate loading on gastric volume in patients with type 2 diabetes

*Lin XQ, Chen YR, Chen X, Cai YP, Lin JX, Xu DM, Zheng XC*

#### META-ANALYSIS

- 6091** Efficacy and safety of adalimumab in comparison to infliximab for Crohn's disease: A systematic review and meta-analysis

*Yang HH, Huang Y, Zhou XC, Wang RN*

#### CASE REPORT

- 6105** Successful treatment of acute relapse of chronic eosinophilic pneumonia with benralizumab and without corticosteroids: A case report

*Izhakian S, Pertzov B, Rosengarten D, Kramer MR*

- 6110** Pembrolizumab-induced Stevens-Johnson syndrome in advanced squamous cell carcinoma of the lung: A case report and review of literature

*Wu JY, Kang K, Yi J, Yang B*

- 6119** Hepatic epithelioid hemangioendothelioma after thirteen years' follow-up: A case report and review of literature

*Mo WF, Tong YL*

- 6128** Effectiveness and safety of ultrasound-guided intramuscular lauromacrogol injection combined with hysteroscopy in cervical pregnancy treatment: A case report

*Ye JP, Gao Y, Lu LW, Ye YJ*

- 6136** Carcinoma located in a right-sided sigmoid colon: A case report

*Lyu LJ, Yao WW*

- 6141** Subcutaneous infection caused by *Mycobacterium abscessus* following cosmetic injections of botulinum toxin: A case report

*Deng L, Luo YZ, Liu F, Yu XH*

- 6148** Overlapping syndrome of recurrent anti-N-methyl-D-aspartate receptor encephalitis and anti-myelin oligodendrocyte glycoprotein demyelinating diseases: A case report  
*Yin XJ, Zhang LF, Bao LH, Feng ZC, Chen JH, Li BX, Zhang J*
- 6156** Liver transplantation for late-onset ornithine transcarbamylase deficiency: A case report  
*Fu XH, Hu YH, Liao JX, Chen L, Hu ZQ, Wen JL, Chen SL*
- 6163** Disseminated strongyloidiasis in a patient with rheumatoid arthritis: A case report  
*Zheng JH, Xue LY*
- 6168** CYP27A1 mutation in a case of cerebrotendinous xanthomatosis: A case report  
*Li ZR, Zhou YL, Jin Q, Xie YY, Meng HM*
- 6175** Postoperative multiple metastasis of clear cell sarcoma-like tumor of the gastrointestinal tract in adolescent: A case report  
*Huang WP, Li LM, Gao JB*
- 6184** Toripalimab combined with targeted therapy and chemotherapy achieves pathologic complete response in gastric carcinoma: A case report  
*Liu R, Wang X, Ji Z, Deng T, Li HL, Zhang YH, Yang YC, Ge SH, Zhang L, Bai M, Ning T, Ba Y*
- 6192** Presentation of Boerhaave's syndrome as an upper-esophageal perforation associated with a right-sided pleural effusion: A case report  
*Tan N, Luo YH, Li GC, Chen YL, Tan W, Xiang YH, Ge L, Yao D, Zhang MH*
- 6198** Camrelizumab-induced anaphylactic shock in an esophageal squamous cell carcinoma patient: A case report and review of literature  
*Liu K, Bao JF, Wang T, Yang H, Xu BP*
- 6205** Nontraumatic convexal subarachnoid hemorrhage: A case report  
*Chen HL, Li B, Chen C, Fan XX, Ma WB*
- 6211** Growth hormone ameliorates hepatopulmonary syndrome and nonalcoholic steatohepatitis secondary to hypopituitarism in a child: A case report  
*Zhang XY, Yuan K, Fang YL, Wang CL*
- 6218** Vancomycin dosing in an obese patient with acute renal failure: A case report and review of literature  
*Xu KY, Li D, Hu ZJ, Zhao CC, Bai J, Du WL*
- 6227** Insulinoma after sleeve gastrectomy: A case report  
*Lobaton-Ginsberg M, Sotelo-González P, Ramirez-Renteria C, Juárez-Aguilar FG, Ferreira-Hermosillo A*
- 6234** Primary intestinal lymphangiectasia presenting as limb convulsions: A case report  
*Cao Y, Feng XH, Ni HX*
- 6241** Esophagogastric junctional neuroendocrine tumor with adenocarcinoma: A case report  
*Kong ZZ, Zhang L*

- 6247** Foreign body granuloma in the tongue differentiated from tongue cancer: A case report  
*Jiang ZH, Xu R, Xia L*
- 6254** Modified endoscopic ultrasound-guided selective N-butyl-2-cyanoacrylate injections for gastric variceal hemorrhage in left-sided portal hypertension: A case report  
*Yang J, Zeng Y, Zhang JW*
- 6261** Management of type IIb dens invaginatus using a combination of root canal treatment, intentional replantation, and surgical therapy: A case report  
*Zhang J, Li N, Li WL, Zheng XY, Li S*
- 6269** Clivus-involved immunoglobulin G4 related hypertrophic pachymeningitis mimicking meningioma: A case report  
*Yu Y, Lv L, Yin SL, Chen C, Jiang S, Zhou PZ*
- 6277** De novo brain arteriovenous malformation formation and development: A case report  
*Huang H, Wang X, Guo AN, Li W, Duan RH, Fang JH, Yin B, Li DD*
- 6283** Coinfection of *Streptococcus suis* and *Nocardia asiatica* in the human central nervous system: A case report  
*Chen YY, Xue XH*
- 6289** Dilated left ventricle with multiple outpouchings – a severe congenital ventricular diverticulum or left-dominant arrhythmogenic cardiomyopathy: A case report  
*Zhang X, Ye RY, Chen XP*
- 6298** Spontaneous healing of complicated crown-root fractures in children: Two case reports  
*Zhou ZL, Gao L, Sun SK, Li HS, Zhang CD, Kou WW, Xu Z, Wu LA*
- 6307** Thyroid follicular renal cell carcinoma excluding thyroid metastases: A case report  
*Wu SC, Li XY, Liao BJ, Xie K, Chen WM*
- 6314** Appendiceal bleeding: A case report  
*Zhou SY, Guo MD, Ye XH*
- 6319** Spontaneous healing after conservative treatment of isolated grade IV pancreatic duct disruption caused by trauma: A case report  
*Mei MZ, Ren YF, Mou YP, Wang YY, Jin WW, Lu C, Zhu QC*
- 6325** Pneumonia and seizures due to hypereosinophilic syndrome – organ damage and eosinophilia without synchronisation: A case report  
*Ishida T, Murayama T, Kobayashi S*
- 6333** Creutzfeldt-Jakob disease presenting with bilateral hearing loss: A case report  
*Na S, Lee SA, Lee JD, Lee ES, Lee TK*

**LETTER TO THE EDITOR**

- 6338** Stem cells as an option for the treatment of COVID-19  
*Cuevas-González MV, Cuevas-González JC*

**ABOUT COVER**

Editorial Board Member of *World Journal of Clinical Cases*, Cristina Tudoran, PhD, Assistant Professor, Department VII, Internal Medicine II, Discipline of Cardiology, "Victor Babes" University of Medicine and Pharmacy Timisoara, Timisoara 300041, Timis, Romania. cristina13.tudoran@gmail.com

**AIMS AND SCOPE**

The primary aim of *World Journal of Clinical Cases* (WJCC, *World J Clin Cases*) is to provide scholars and readers from various fields of clinical medicine with a platform to publish high-quality clinical research articles and communicate their research findings online.

WJCC mainly publishes articles reporting research results and findings obtained in the field of clinical medicine and covering a wide range of topics, including case control studies, retrospective cohort studies, retrospective studies, clinical trials studies, observational studies, prospective studies, randomized controlled trials, randomized clinical trials, systematic reviews, meta-analysis, and case reports.

**INDEXING/ABSTRACTING**

The WJCC is now indexed in Science Citation Index Expanded (also known as SciSearch®), Journal Citation Reports/Science Edition, Scopus, PubMed, and PubMed Central. The 2021 Edition of Journal Citation Reports® cites the 2020 impact factor (IF) for WJCC as 1.337; IF without journal self cites: 1.301; 5-year IF: 1.742; Journal Citation Indicator: 0.33; Ranking: 119 among 169 journals in medicine, general and internal; and Quartile category: Q3. The WJCC's CiteScore for 2020 is 0.8 and Scopus CiteScore rank 2020: General Medicine is 493/793.

**RESPONSIBLE EDITORS FOR THIS ISSUE**

Production Editor: *Ying-Yi Yuan*, Production Department Director: *Xu Guo*, Editorial Office Director: *Jin-Lei Wang*.

**NAME OF JOURNAL**

*World Journal of Clinical Cases*

**ISSN**

ISSN 2307-8960 (online)

**LAUNCH DATE**

April 16, 2013

**FREQUENCY**

Thrice Monthly

**EDITORS-IN-CHIEF**

Bao-Gan Peng, Jerzy Tadeusz Chudek, George Kontogeorgos, Maurizio Serati, Ja Hyeon Ku

**EDITORIAL BOARD MEMBERS**

<https://www.wjgnet.com/2307-8960/editorialboard.htm>

**PUBLICATION DATE**

June 26, 2022

**COPYRIGHT**

© 2022 Baishideng Publishing Group Inc

**INSTRUCTIONS TO AUTHORS**

<https://www.wjgnet.com/bpg/gerinfo/204>

**GUIDELINES FOR ETHICS DOCUMENTS**

<https://www.wjgnet.com/bpg/GerInfo/287>

**GUIDELINES FOR NON-NATIVE SPEAKERS OF ENGLISH**

<https://www.wjgnet.com/bpg/gerinfo/240>

**PUBLICATION ETHICS**

<https://www.wjgnet.com/bpg/GerInfo/288>

**PUBLICATION MISCONDUCT**

<https://www.wjgnet.com/bpg/gerinfo/208>

**ARTICLE PROCESSING CHARGE**

<https://www.wjgnet.com/bpg/gerinfo/242>

**STEPS FOR SUBMITTING MANUSCRIPTS**

<https://www.wjgnet.com/bpg/GerInfo/239>

**ONLINE SUBMISSION**

<https://www.f6publishing.com>



Retrospective Study

# Application of a novel computer-assisted surgery system in percutaneous nephrolithotomy: A controlled study

Fei Qin, Ye-Feng Sun, Xin-Ning Wang, Bin Li, Zhi-Lei Zhang, Ming-Xin Zhang, Fei Xie, Shuai-Hong Liu, Zi-Jie Wang, Yuan-Chao Cao, Wei Jiao

**Specialty type:** Urology and nephrology

**Provenance and peer review:**

Unsolicited article; Externally peer reviewed.

**Peer-review model:** Single blind

**Peer-review report's scientific quality classification**

Grade A (Excellent): A  
Grade B (Very good): B, B  
Grade C (Good): 0  
Grade D (Fair): 0  
Grade E (Poor): 0

**P-Reviewer:** Gadelkareem RA, Egypt; Shahriari M, Iran; □urlin VM, Romania

**Received:** December 13, 2021

**Peer-review started:** December 13, 2021

**First decision:** February 14, 2022

**Revised:** March 1, 2022

**Accepted:** April 21, 2022

**Article in press:** April 21, 2022

**Published online:** June 26, 2022



Fei Qin, Ye-Feng Sun, Xin-Ning Wang, Bin Li, Zhi-Lei Zhang, Ming-Xin Zhang, Fei Xie, Shuai-Hong Liu, Zi-Jie Wang, Yuan-Chao Cao, Wei Jiao, Department of Urology, The Affiliated Hospital of Qingdao University, Qingdao 266000, Shandong Province, China

**Corresponding author:** Wei Jiao, MMed, Associate Chief Physician, Associate Professor, Deputy Director, Department of Urology, The Affiliated Hospital of Qingdao University, No. 16 Jiangsu Road, Shinan District, Qingdao 266000, Shandong Province, China.  
[jiaowei3929@163.com](mailto:jiaowei3929@163.com)

## Abstract

### BACKGROUND

Most complex renal stones are managed primarily with percutaneous nephrolithotomy (PCNL). However, PCNL is still a great challenge for surgeons because of poor comprehension on complex adjacent structures. Novel techniques are required to assist in planning and navigation.

### AIM

To apply and evaluate the Hisense computer-assisted surgery (CAS) system in PCNL.

### METHODS

A total of 60 patients with complex renal stones were included. Thirty patients in the CAS group had three-dimensional (3D) virtual models constructed with the CAS system. The model assisted in planning and navigating in the CAS system. Thirty patients in the control group planned and navigated as standard PCNL, without the application of the CAS system. Success rate of one attempt, operation time, initial stone-free rate, decrease in hemoglobin, and complications were collected and analyzed.

### RESULTS

There were no statistically significant differences in the baseline characteristics or planning characteristics. The success rate of one puncturing attempt (90% *vs* 67%,  $P = 0.028$ ) and the initial stone-free rate (87% *vs* 63%,  $P = 0.037$ ) were significantly higher in the CAS group. However, there were no statistically significant differences in the operation time ( $89.20 \pm 29.60$  min *vs*  $92.33 \pm 33.08$  min,  $P = 0.859$ ) or in the decrease in hemoglobin ( $11.07 \pm 8.32$  g/L *vs*  $9.03 \pm 11.72$  g/L,  $P = 0.300$ )



between the CAS group and the control group. No statistically significant differences in the incidence of complications (Clavien-Dindo grade  $\geq 2$ ) were found.

### CONCLUSION

Compared with standard PCNL, CAS-assisted PCNL had advantages in terms of the puncturing success rate and stone-free rate. The Hisense CAS System was recommended to assist in preoperative planning and intraoperative navigation for an intuitive, precise and convenient PCNL.

**Key Words:** Computer-assisted surgery system; Percutaneous nephrolithotomy; Three-dimensional reconstruction; Planning; Navigation

©The Author(s) 2022. Published by Baishideng Publishing Group Inc. All rights reserved.

**Core Tip:** Consisting of construction, display, simulation and measurement functions, the Hisense computer-assisted surgery (CAS) system is a novel and all-around software based on new generation of three-dimensional (3D) reconstruction. Compared with standard percutaneous nephrolithotomy (PCNL), CAS-assisted PCNL had advantages in terms of the puncturing success rate and stone-free rate. The CAS System was recommended to assist in preoperative planning and intraoperative navigation for an intuitive, precise and convenient PCNL.

**Citation:** Qin F, Sun YF, Wang XN, Li B, Zhang ZL, Zhang MX, Xie F, Liu SH, Wang ZJ, Cao YC, Jiao W. Application of a novel computer-assisted surgery system in percutaneous nephrolithotomy: A controlled study. *World J Clin Cases* 2022; 10(18): 6039-6049

**URL:** <https://www.wjgnet.com/2307-8960/full/v10/i18/6039.htm>

**DOI:** <https://dx.doi.org/10.12998/wjcc.v10.i18.6039>

## INTRODUCTION

Renal stones, including large stones and multiple stones, are a common and intractable urological disease. Percutaneous nephrolithotomy (PCNL) has been recommended as the first-line treatment for renal stones that are larger than 2 cm[1,2]. In other cases of renal stones, PCNL is also an alternative treatment. However, it is difficult to achieve surgical competence in PCNL, especially for complex renal stones such as staghorn stones and multiple stones. Therefore, a great quantity of training is required for young surgeons. The study of the learning curve of a single surgeon suggested that competence in PCNL was reached after treating 60 cases and was excellent after treating 115 cases[3].

For excellent PCNL, novel techniques, including visual needles[4], three-dimensional (3D) printing [5], lasers[6], electromagnetic tracking[7] and virtual reality (VR)[8], are emerging to assist surgeons in understanding the regional anatomy and establishing percutaneous tracts. 3D reconstruction is also a novel technique[9] and has showed preliminary advantages in PCNL[10]. The structures around the stones are reconstructed from two-dimensional (2D) clinical imaging pictures to form 3D models for further display, planning and navigation. These models provide a comprehensive view to show the 3D relationship between the stones and adjacent structures, which cannot be provided by traditional 2D imaging, such as fluoroscopy, ultrasound (US) and computed tomography (CT).

The Hisense computer-assisted surgery (CAS) system, consisting of construction, display, simulation and measurement functions, is a software based on 3D reconstruction. The system has been applied in pediatric hepatectomy[11] and gastrectomy[12] and is helpful for accurate preoperative planning and intraoperative navigation. In the present study, we applied the CAS system in PCNL and first compared CAS-assisted PCNL (the CAS group) and standard PCNL (the control group) to evaluate the system.

## MATERIALS AND METHODS

### Patients and designs

It is a retrospective study. From October 2019 to October 2020, patients with complex renal stones, confirmed by preoperative computed tomography urography (CTU) and managed by PCNL in the Urological Department of the Affiliated Hospital of Qingdao University, were retrospectively enrolled in the study. Complex renal stones were defined as partial staghorn stones, complete staghorn stones or multiple stones. However, patients with history of operations, introduction of ureteral stents or



nephrostomy tubes, existence of other disorders in the ipsilateral kidney, or absolute operative contraindications were excluded.

Thirty patients who met the selection criteria and underwent CAS-assisted PCNL were included as the CAS group. In CAS-assisted PCNL, patients had 3D virtual models constructed with the CTU images by the CAS system (Hisense Medicine, Qingdao, China), and the model assisted in planning and navigating in the CAS system. At the same time, 103 patients met the selection criteria and underwent standard PCNL. They were ranked according to the medical record number, and the first 30 patients were included into the study as the control group in a 1:1 ratio to the patients in the CAS group using the random number method. In standard PCNL, 2D axial, sagittal and coronal images from CTU aided in planning and navigating, without the application of the CAS system.

All surgeries were performed by the same surgical team. Ethics approval was obtained from the Ethics Committee of the Affiliated Hospital of Qingdao University (QYFYWZLL26370). Informed consent was obtained from all the patients for this study.

### **CTU protocol**

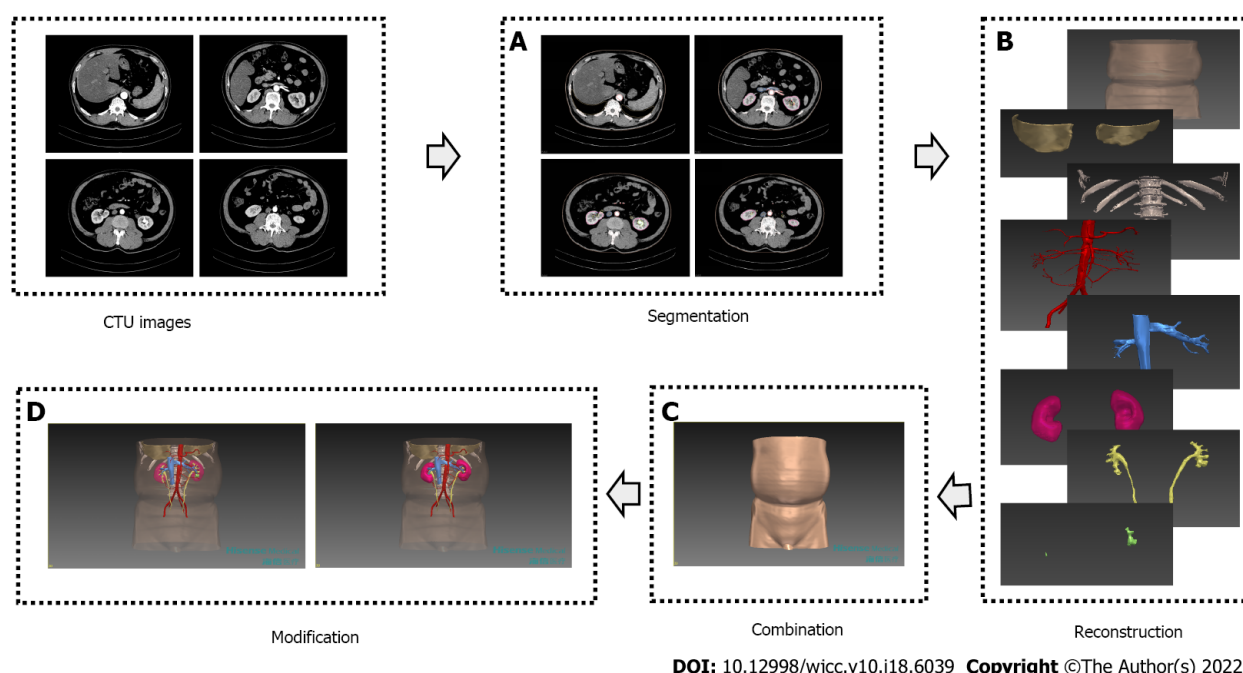
The CTU images, including the unenhanced, arterial, venous, and excretory phases, were obtained by a 64 multidetector row CT scanner (Siemens, Germany) with 1-mm step intervals. The scan delay times for the arterial, venous, and excretory phases were 25, 60, and 600-900 s, respectively, after intravenous injection of contrast material. Patients were advised to hold their breath in inspiration during the process.

### **Application of the Hisense CAS system**

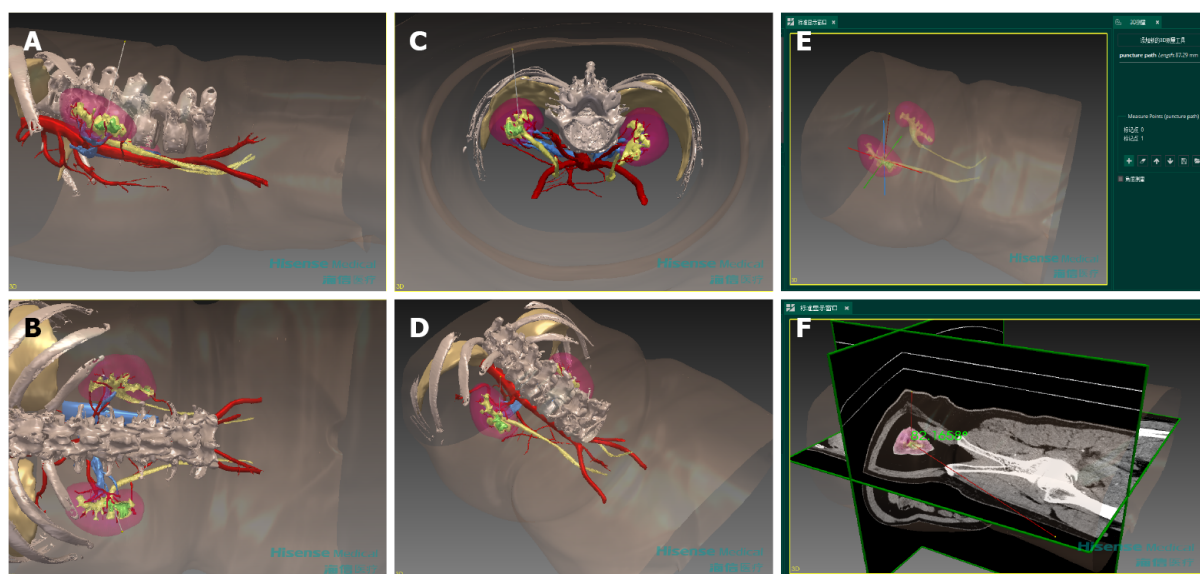
**Construction of 3D virtual model:** Four-phase images of the CTU were exported in Digital Imaging and Communications in Medicine format and were imported into the Hisense CAS system: (1) Segmentation: Stones, renal collecting system, ureters, renal parenchyma, renal vascular system, bottom of the thoracic cavity, spine, ribs, and skin were segmented from the images of different phases by the technique of region growing and threshold segmentation; (2) Reconstruction: The system processed the segmented structures for the 3D reconstruction of separate models using the techniques of maximum intensity projection, multiple planar reformation, curved planar reconstruction and volume rendering; (3) Combination: These separate models were registered and were integrated into a fusion model; and (4) Modification: After noise reduction, smoothing, dyeing and diaphaneity adjustments of each structure in the fusion model, a final 3D virtual model was obtained (Figure 1).

**Planning for PCNL:** With the simulation and measurement function of the CAS system, urological surgeons planned for the PCNL using the 3D virtual models. The planning was divided into three parts: the determination of ideal entry calyx, ideal puncture path and tract number: (1) Ideal entry calyx, where the nephroscope enters the collecting system, is defined as the calyx that is accessible to the renal pelvis and has the smallest length, the largest infundibular width, and the most "favorable calyces" [13]. A favorable calyx is defined as a calyx whose angle from the entry calyx is larger than 95° [14]. Stones in the renal pelvis and favorable calyces can be easily cleared from the ideal entry calyx. (2) The puncture path is the tract starting at the surface of the skin and ending at the boundary of the entry calyx. And ideal puncture path should have the shortest distance from the skin to the ideal entry calyx and should pass through the thinnest renal parenchyma, with the protection of adjacent vessels and organs. We moved virtual puncture path to find the ideal puncture path and recorded its depth (distance a) and direction (Figure 2). The direction was indicated by the angle between ideal puncture path and the axial plane (angle a), coronal plane (angle b), and sagittal plane (angle c). The intersection between ideal puncture path and skin is the puncture point. Then, we recorded the position of the point by the latitudinal distance to the posterior midline of the body (distance b) and the longitudinal distance to the inferior margin of the ipsilateral twelfth rib (distance c). And (3) Tract number. There are often no significant residual stones after the PCNL with one tract, based on above ideal entry calyx and puncture path. The second entry calyx and puncture path were needed to establish another tract when significant residual stones were present. The planning process of the second tract was the same as that of the first tract. A third tract was not established for the concern of increased injuries and bleeding. Repeated simulation could be performed if previous planning was not satisfactory.

**Navigation for PCNL:** The 3D model and PCNL plan obtained from the CAS system were applied to navigate the PCNL. During the puncture phase, we first located the actual puncture point with distances b and c. Then, we set the direction of the puncture needle by angles a, b and c. With the help of the US (Hitachi, Japan), we punctured ideal entry calyx from the actual puncture point along the direction of the puncture needle, and the puncture depth was approximately the distance a. US was mainly used to verify the position of ideal entry calyx and to adjust the puncture path. Tract number was determined as mentioned in the PCNL plan. The puncture process was performed while the patients were in inspiration. During the tract dilation phase and the stone removal phase, it was the same as a standard PCNL. During all phases, the 3D model was shown on the screen using the display function of the CAS system. The 3D model could be magnified, rotated and translated to meet surgeons' requests. Stones, the collecting system, adjacent vessels and organs could be viewed in all directions to



**Figure 1** The procedures of three-dimensional model construction by the computer-assisted surgery system. A: Different structures were segmented from different phases of CTU; B: Segmented skin, the bottom of the thoracic cavity, spine, ribs, renal arterial system, renal venous system, renal parenchyma, renal collecting system, ureters and stones were reconstructed respectively; C: In combination, reconstructed structures were registered and integrated into a fusion model; D: In modification, diaphaneity adjustment of skin, renal parenchyma and renal collecting system made it possible to observe stones.

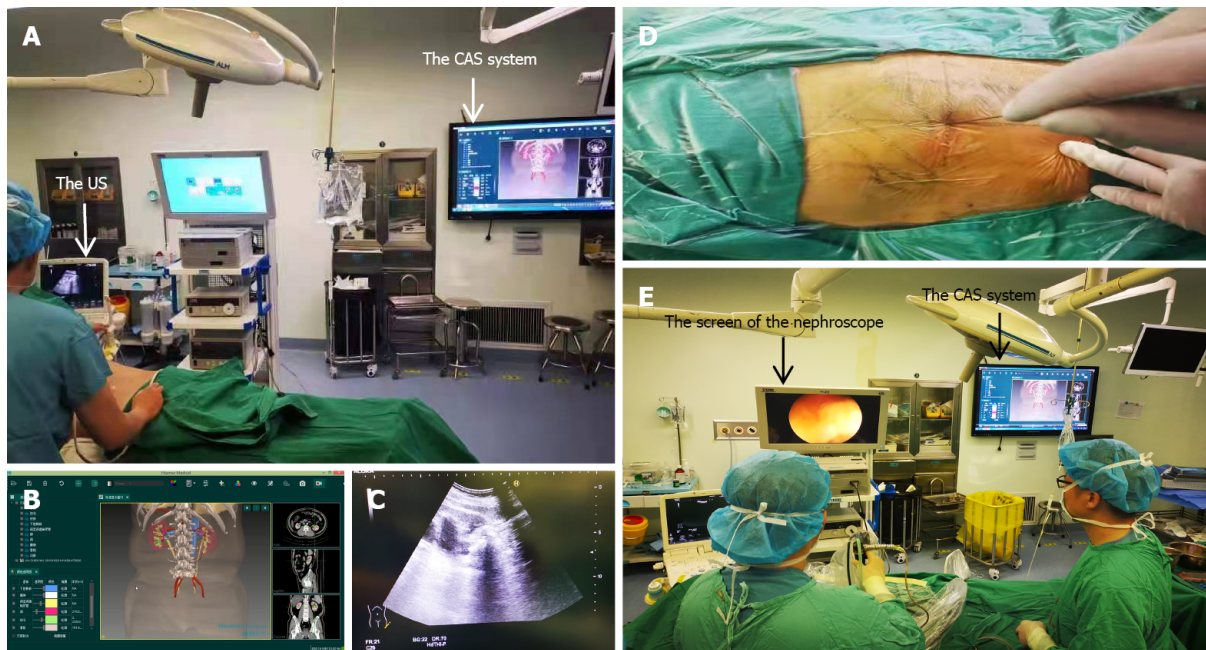


**Figure 2** Preoperative planning for percutaneous tracts with the three-dimensional model. Ideal puncture path in side view (A), back view (B), axial view (C) and oblique view (D) were simulated. Lengths and angles could be measured by the CAS system, taking the depth of ideal puncture path (E) and the angle between ideal puncture path and the coronal plane (F) for example.

find stones and to avoid injuries (Figure 3).

### Surgical procedure

After general anesthesia, the patient was placed in the lithotomy position, and a ureteral catheter was placed for artificial hydronephrosis. Then, the patient was placed into the prone position and underwent main surgical procedure, including puncture phase, tract dilation phase and stone removal phase, with the help of the US. The tract was dilated to 24F. A 6F ureteral stent and a 14F nephrostomy tube were placed at the end of the surgery. CT was performed within 1 mo after the surgery. "Stone-



DOI: 10.12998/wjcc.v10.i18.6039 Copyright ©The Author(s) 2022.

**Figure 3** Intraoperative navigation for percutaneous nephrolithotomy with the computer-assisted surgery system. A: Making percutaneous tracts with the help of the CAS system and the US; B: The CAS system showed the 3D model and the plan obtained preoperatively; C: The US showed puncture paths and surrounding structures in real time; D: Successful puncture was guided by parameters from preoperative planning; E: Removing stones with the reference from the CAS system.

free" was defined as no stone fragments or residual fragments present that more than 4 mm in diameter.

### Data collection

Age, gender, body mass index (BMI), dilation of the collecting system, as well as side, type, density and sectional area of stones were recorded as the baseline characteristics. Entry calyx, tract length and tract number were recorded as the planning characteristics. Finally, the success rate of one attempt, operation time, initial stone-free rate, decrease in hemoglobin and complications (Clavien-Dindo grade  $\geq 2$ ) were analyzed. Initial stone-free rate was the proportion of patients who were "stone-free" after the first-stage PCNL.

### Statistical analysis

Continuous data, expressed as the mean and standard deviation (SD), were analyzed by Student's *t* test or the Mann-Whitney *U* test. Categorical variables, shown as the number and percentage, were analyzed by the chi-square or Fisher's exact test. Statistical analyses were performed using SPSS version 23.  $P < 0.05$  was regarded as statistically significant.

## RESULTS

Sixty patients were included in the study: 30 in the CAS group and 30 in the control group. There were no statistically significant differences in age, gender, BMI, malformation of the collecting system, dilation of the collecting system, stone side, stone type, stone density or stone sectional area between the two groups (Table 1).

There were 6 upper calyces, 17 middle calyces, and 7 Lower calyces selected to be the entry calyces in the CAS group, while there were 3 upper calyces, 22 middle calyces, and 5 lower calyces selected to be the entry calyces in the control group. Most surgeries were completed with one tract (87% vs 90%) in the CAS group and the control group. The tract lengths in the CAS group and the control group were  $76.03 \pm 13.26$  mm and  $82.53 \pm 17.58$  mm, respectively. No statistically significant differences were found in the planning characteristics between the two groups (Table 2).

A total of 27/30 punctures in the CAS group and 20/30 in the control group were successful after just one attempt. The success rate of one puncturing attempt was significantly higher in the CAS group (90% vs 67%,  $P = 0.028$ ). 26/30 surgeries in the CAS group and 19/30 in the control group achieved "stone-free", and the initial stone-free rate was significantly different between the two groups (87% vs 63%,  $P = 0.037$ ). However, there were no statistically significant differences in the operation time ( $89.20 \pm 29.60$  min vs  $92.33 \pm 33.08$  min,  $P = 0.859$ ) or the decrease in hemoglobin ( $11.07 \pm 8.32$  g/L vs  $9.03 \pm 11.72$  g/L,

**Table 1 Baseline characteristics of patients and stones in the two groups**

Characteristics	CAS group (n = 30)	Control group (n = 30)	P value
Age, yr, mean $\pm$ SD	52.30 $\pm$ 14.37	49.57 $\pm$ 13.58	0.452
Gender, n (%)			0.301
Male	14 (47)	18 (60)	
Female	16 (53)	12 (40)	
BMI, kg/m <sup>2</sup> , mean $\pm$ SD	25.24 $\pm$ 3.58	25.29 $\pm$ 5.12	0.968
Dilation of the collecting system <sup>1</sup> , n (%)			0.635
No or mild	18 (60)	20 (66)	
Moderate	8 (27)	5 (17)	
Severe	4 (13)	5 (17)	
Stone side, n (%)			0.426
Left	17 (57)	20 (67)	
Right	13 (43)	10 (33)	
Stone type, n (%)			0.434
Partial staghorn stone	4 (13)	8 (27)	
Complete staghorn stone	6 (20)	5 (17)	
Multiple stone	20 (67)	17 (56)	
Stone density, Hounsfield units, mean $\pm$ SD	915.15 $\pm$ 334.85	824.69 $\pm$ 245.73	0.238
Stone sectional area, mm <sup>2</sup> , mean $\pm$ SD	562.95 $\pm$ 405.58	497.59 $\pm$ 566.88	0.174

<sup>1</sup>It was mild when the dilation distance of the collecting system was less than 2 cm. It was moderate when the dilation distance was between 2 cm and 4 cm. It was severe when the dilation distance was more than 4 cm. The dilation distance of the collecting system was measured when it was longest.

CAS: Computer-assisted surgery; SD: Standard deviation.

**Table 2 Planning characteristics of tracts in two groups**

Characteristics	CAS group (n = 30)	Control group (n = 30)	P value
Entry calyx <sup>1</sup> , n (%)			0.413
Upper calyx	6 (20)	3 (10)	
Middle calyx	17 (57)	22 (73)	
Lower calyx	7 (23)	5 (17)	
Tract length <sup>1</sup> , mm, mean $\pm$ SD	76.03 $\pm$ 13.26	82.53 $\pm$ 17.58	0.111
Tract number, n (%)			1.000
1	26 (87)	27 (90)	
2	4 (13)	3 (10)	

<sup>1</sup>Entry calyx and tract length were collected from the first tract if there were two tracts.

CAS: Computer-assisted surgery; SD: Standard deviation.

$P = 0.300$ ) between the CAS group and the control group. Bleeding necessitating blood transfusion was observed in 1 patient in the CAS group and 1 patient in the control group. Urinary tract infection necessitating therapeutic antibiotics or enhanced supportive therapy was observed in 2 patients in the CAS group and 2 patients in the control group. No injuries to adjacent structures were observed in the two groups. There were no statistically significant differences in the incidence of these complications (Table 3).



**Table 3 Perioperative characteristics of percutaneous nephrolithotomy in two groups**

Characteristics	CAS group (n = 30)	Control group(n = 30)	P value
Success rate of one puncturing attempt, n (%)	27 (90)	20 (67)	0.028
Operation time, min, mean $\pm$ SD	89.20 $\pm$ 29.60	92.33 $\pm$ 33.08	0.859
Decrease in hemoglobin, g/L, mean $\pm$ SD	11.07 $\pm$ 8.32	9.03 $\pm$ 11.72	0.300
Bleeding <sup>1</sup> , n (%)	1 (3)	1 (3)	1.000
Urinary tract infection <sup>1</sup> , n (%)	2 (7)	2 (7)	1.000
Injury <sup>1</sup> , n (%)	0 (0)	0 (0)	-
Initial stone-free rate, n (%)	26 (87)	19 (63)	0.037

<sup>1</sup>Complications were counted and analyzed when Clavien–Dindo grade  $\geq$  2.

CAS: Computer-assisted surgery; SD: Standard deviation.

## DISCUSSION

Most complex renal stones are managed primarily with PCNL[15]. Preoperative planning based on CTU is recommended[16], and intraoperative navigation with fluoroscopy or US is commonly used. However, PCNL is still a great challenge for surgeons because of low stone-free rate and high complication rate[17]. The most critical step to meet the challenge is the establishment of perfect tracts from the skin to the entry calyces. For higher stone free rate and lower complication rate, we applied this CAS system into PCNL, especially to establish the tract.

Traditional studies tended to perform preoperative planning with 2D CT images[18]. It was difficult to display overall 3D views in the simulation processes and the 3D precise measurements of each parameter. The surgeon had to reconstruct an overall view in mind, which relied on a long-team learning and was easily influenced by subjective judgment. The CAS system displayed a direct and objective 3D model for planning. The size, number, shape, position and adjacent structures of stones were evaluated in a panoramic view, and ideal entry calyces were selected. During the simulation, 3D puncture paths from the skin to the calyces were placed and were adjusted to obtain minimal injury to adjacent vessels and organs. It is obvious that measurement with 2D CT images cannot provide direct data of the 3D structures. The calculation method for 3D data obtained from 2D CT in PCNL was reported[19], but the process was also complex. In the CAS system, selected lengths or angles in 3D space were automatically measured and recorded with the parameters. The 3D planning from the CAS system assisted surgeons in making more precise surgeries.

The intraoperative navigation for PCNL was traditionally provided by fluoroscopy or US. The repetitive use of fluoroscopy or US was needed to make suitable percutaneous tracts. Novel techniques have helped reduce the radiation exposure and improve the accuracy during navigation, such as laser-guided puncture[6], ureteroscopy-assisted puncture[20], puncture with visual needles[4], marker-based tracking with iPads[21] and electromagnetic tracking[7]. Navigation of the CAS system was mainly dependent on preoperative planning parameters rather than intraoperative techniques, which is different from the traditional imaging and novel techniques mentioned above. In addition, during the operation, the shape and position of stones and adjacent structures in display also gave reference to the location and adjustment of the tract. Perfect preoperative preparation and intraoperative reference reduced the repetitive use of fluoroscopy or US during the operation, especially when surgeons made percutaneous tracts. Navigation from the CAS system simplified the process for PCNL, making it more convenient. Surgeons also received less radiation exposure when the use of fluoroscopy was reduced.

The CAS system assisted PCNL in the preoperative planning and intraoperative navigation, and construction of a 3D model was a fundamental process. Initial 3D models were constructed from the excretory phase of contrast CT or CTU. Although adjacent structures were indistinct and incomplete, those models showed the relationship between stones and the collecting system, resulting in a low number of punctures[22]. The new generation of 3D reconstruction usually collects images from four phases of CTU. Structures were segmented from the phase in which they were most distinct. In particular, because of the clear display of renal arteries, segmental arteries and main branches, which did not exist in previous 3D renal pelvis model[22], injury to the renal artery system was generally avoided. In addition, noise reduction, smoothing and dyeing made structures more distinct from each other, and the transparency adjustments of the skin, kidney and collecting system made stones clearer, which improved the visual effect[23].

At present, a few studies have reported the application of the new generation of 3D reconstruction in PCNL. Tsaturyan *et al*[23] described technical details of 3D reconstruction in 3 patients. Li *et al*[9] reported 3D reconstruction in a cohort of 15 patients and provide reference in planning strategy and evaluation indicators. But these pilot studies did not include a control group. The study of Huang *et al*

[10] seemed to be the only controlled study, in which they verified the advantages of the technique in reducing number of punctures, number of tracts and volume of bleeding. Compared with our study, they had a larger sample size, but they adopted dual-source CT in the control group, which was not a standard imaging method. Besides, extra softwares were often used for post-processing procedures after 3D reconstruction in mentioned studies. 3D reconstruction and post-processing procedures were all performed in the CAS system in our study.

The perioperative characteristics showed the preliminary advantages of the CAS system. In the present study, demographic characteristics and stone characteristics that may influence the stone-free rate[24] were analyzed, and the patients in the two groups were relatively homogeneous without significant differences. Because of the absence of preoperative ipsilateral lesions or operations and the absence of second-stage surgeries, the initial stone-free rate accurately reflected the efficiency of the first-stage surgeries. The CAS group obtained a higher initial stone-free rate. Under the limitation of tract number, establishing efficient tracts to remove as many stones as possible is helpful to improve the stone-free rate[5]. We think that the display of the 3D models in the CAS system helped surgeons understand the 3D relationship between structures, which was conducive to the establishment of efficient tracts. In addition, accurate 3D measurement enabled the morphometry to be applied to the establishment of efficient tracts. For example, the angle between the entry calyx and the calyx to be reached is an independent predictive factor for accessing a particular calyx[14]. Therefore, we compared the measured data of the included angles of calyces to select ideal entry calyces. We also found a significantly higher success rate of one attempt in the CAS group, and this may be related to extra help from the CAS system. The quantitative planning data and intuitive reference of the 3D models increased the success rate of one attempt in the CAS group. Infection, bleeding and injury were major complications of PCNL[25], but most of these complications could be treated with conservative management [26]. Therefore, we focused on complications whose Clavien-Dindo grade  $\geq 2$ . The CAS system seemed to help reduce bleeding due to the visualization of the renal vascular system, but no significant differences were found in the incidence of any complication. More patients are needed to explore the influence of the system on the development of complications.

We applied an intuitive, precise and convenient computer-assisted surgery system in PCNL and the new generation of 3D reconstruction was the key technique. The controlled study showed advantages in terms of the puncturing success rate and stone-free rate. In the future, resident training and patient care education may benefit from the system. The system and planning parameters will also promote the combination with other techniques and the application of novel techniques such as VR[8] and robot-assisted surgery[27] in PCNL. However, there are several limitations in this study. Patients were in the supine position when the CTU images were obtained, but they were in the prone position during the surgery. There was a change in the organ position between the two positions, which may alter the tract angles and injury rates[28]. Patients were advised to hold their breath for still preoperative images, but respiratory movement during the surgery could not be avoided. The system failed to provide the data and images in real time. Therefore, we reserved ultrasound to observe respiratory movement and the deformation of tissues for adjustments during surgery. In addition, further study is required due the lack of data from the tract dilation phase and stone removal phase. More patients should be included to explore the influence of the system on the development of complications. The system adds additional costs and procedures to the treatment, which need to be reduced and simplified to promote the clinical application of the system.

## CONCLUSION

With multiple functions of the Hisense CAS system, an intuitive, precise and convenient PCNL could be achieved. The 3D construction of the model was the first and fundamental step, in which the new generation of 3D reconstruction was the key technique. This controlled study demonstrated the advantages of CAS-assisted PCNL in terms of the success rate of using only one puncturing attempt and the initial stone-free rate over standard PCNL. The System was recommended to assist in preoperative planning and intraoperative navigation for PCNL.

## ARTICLE HIGHLIGHTS

### Research background

Percutaneous nephrolithotomy (PCNL) is still a great challenge for surgeons because of poor comprehension on complex adjacent structures.

### Research motivation

Novel techniques are required to assist in planning and navigation.

**Research objectives**

To apply and evaluate the Hisense computer-assisted surgery (CAS) system in PCNL.

**Research methods**

A total of 60 patients with complex renal stones were included. CAS-assisted PCNL (the CAS group) and standard PCNL (the control group) were compared in a retrospective study. Success rate of one attempt, operation time, initial stone-free rate, decrease in hemoglobin, and complications were collected and analyzed.

**Research results**

The success rate of one puncturing attempt (90% *vs* 67%,  $P = 0.028$ ) and the initial stone-free rate (87% *vs* 63%,  $P = 0.037$ ) were significantly higher in the CAS group. Compared with standard PCNL, CAS-assisted PCNL had advantages in terms of the puncturing success rate and stone-free rate.

**Research conclusions**

The Hisense CAS System was recommended to assist in preoperative planning and intraoperative navigation for an intuitive, precise and convenient PCNL.

**Research perspectives**

Consisting of construction, display, simulation and measurement functions, the CAS system is a novel and all-around software based on new generation of three-dimensional (3D) reconstruction. Compared with standard PCNL, CAS-assisted PCNL had advantages in terms of the puncturing success rate and stone-free rate. The CAS System was recommended to assist in preoperative planning and intraoperative navigation for an intuitive, precise and convenient PCNL.

**FOOTNOTES**

**Author contributions:** All authors contributed to the study conception and design; Data collection was performed by Sun YF and Zhang ZL; Data analysis was performed by Qin F, Zhang MX and Xie F; Figure collection and processing was performed by Liu SH and Wang ZJ; Cao YC and Jiao W provided clinical advice; Wang XN and Li B revised the manuscript according to comments; The first draft of the manuscript was written by Qin F and all authors commented on previous versions of the manuscript; all authors read and approved the final manuscript.

**Supported by** the Science and Technology Program in Chinese Medicine of Shandong Province, No. 2020M074.

**Institutional review board statement:** This study was reviewed and approved by the Ethics Committee of the Affiliated Hospital of Qingdao University, No. QYFYWZLL26370.

**Informed consent statement:** Informed consent was obtained from the patient in this study.

**Conflict-of-interest statement:** The authors had no conflict-of-interest to declare that are relevant to the content of this article.

**Data sharing statement:** The de-identified data will be shared on reasonable request to the corresponding author.

**Open-Access:** This article is an open-access article that was selected by an in-house editor and fully peer-reviewed by external reviewers. It is distributed in accordance with the Creative Commons Attribution NonCommercial (CC BY-NC 4.0) license, which permits others to distribute, remix, adapt, build upon this work non-commercially, and license their derivative works on different terms, provided the original work is properly cited and the use is non-commercial. See: <https://creativecommons.org/licenses/by-nc/4.0/>

**Country/Territory of origin:** China

**ORCID number:** Fei Qin 0000-0002-8896-532X; Ye-Feng Sun 0000-0002-8743-8093; Xin-Ning Wang 0000-0002-7022-8073; Bin Li 0000-0001-6695-3080; Zhi-Lei Zhang 0000-0001-6801-8248; Ming-Xin Zhang 0000-0003-2606-1613; Fei Xie 0000-0002-5229-9572; Shuai-Hong Liu 0000-0001-7281-4490; Zi-Jie Wang 0000-0002-6246-2812; Yuan-Chao Cao 0000-0003-3949-168X; Wei Jiao 0000-0001-9102-4478.

**S-Editor:** Wu YXJ

**L-Editor:** A

**P-Editor:** Wu YXJ



## REFERENCES

- 1 **Pradère B**, Doizi S, Proietti S, Brachlow J, Traxer O. Evaluation of Guidelines for Surgical Management of Urolithiasis. *J Urol* 2018; **199**: 1267-1271 [PMID: 29221932 DOI: 10.1016/j.juro.2017.11.111]
- 2 **Türk C**, Petfik A, Sarica K, Seitz C, Skolarikos A, Straub M, Knoll T. EAU Guidelines on Interventional Treatment for Urolithiasis. *Eur Urol* 2016; **69**: 475-482 [PMID: 26344917 DOI: 10.1016/j.eururo.2015.07.041]
- 3 **Allen D**, O'Brien T, Tiptaft R, Glass J. Defining the learning curve for percutaneous nephrolithotomy. *J Endourol* 2005; **19**: 279-282 [PMID: 15865512 DOI: 10.1089/end.2005.19.279]
- 4 **Zhang J**, Kang N, Jiang Y, Zhang J. Microperc with self-assembled fr 4.85 visual needle and ureteral access sheath. *J Invest Surg* 2021; 1-8 [DOI: 10.1080/08941939.2021.1902024]
- 5 **Xu Y**, Yuan Y, Cai Y, Li X, Wan S, Xu G. Use 3D printing technology to enhance stone free rate in single tract percutaneous nephrolithotomy for the treatment of staghorn stones. *Urolithiasis* 2020; **48**: 509-516 [PMID: 31616985 DOI: 10.1007/s00240-019-01164-8]
- 6 **Wu J**, Zhou P, Luo X, Hao Z, Lu C, Zhang H, Zhou T, Xu S. Novel laser positioning navigation to aid puncture during percutaneous nephrolithotomy: a preliminary report. *World J Urol* 2019; **37**: 1189-1196 [PMID: 30238400 DOI: 10.1007/s00345-018-2496-z]
- 7 **Rodrigues PL**, Vilaça JL, Oliveira C, Cicione A, Rassweiler J, Fonseca J, Rodrigues NF, Correia-Pinto J, Lima E. Collecting system percutaneous access using real-time tracking sensors: first pig model in vivo experience. *J Urol* 2013; **190**: 1932-1937 [PMID: 23714434 DOI: 10.1016/j.juro.2013.05.042]
- 8 **Farcas M**, Reynolds LF, Lee JY. Simulation-Based Percutaneous Renal Access Training: Evaluating a Novel 3D Immersive Virtual Reality Platform. *J Endourol* 2021; **35**: 695-699 [PMID: 33261507 DOI: 10.1089/end.2020.0674]
- 9 **Li H**, Chen Y, Liu C, Li B, Xu K, Bao S. Construction of a three-dimensional model of renal stones: comprehensive planning for percutaneous nephrolithotomy and assistance in surgery. *World J Urol* 2013; **31**: 1587-1592 [PMID: 23223963 DOI: 10.1007/s00345-012-0998-7]
- 10 **Huang YS**, Zhu XS, Wan GY, Zhu ZW, Huang HP. Application of simulated puncture in percutaneous nephrolithotomy. *Eur Rev Med Pharmacol Sci* 2021; **25**: 190-197 [PMID: 33506907 DOI: 10.26355/eurrev\_202101\_24384]
- 11 **Zhang G**, Zhou XJ, Zhu CZ, Dong Q, Su L. Usefulness of three-dimensional(3D) simulation software in hepatectomy for pediatric hepatoblastoma. *Surg Oncol* 2016; **25**: 236-243 [PMID: 27566028 DOI: 10.1016/j.suronc.2016.05.023]
- 12 **Liu H**, Wang F, Liu B, Zheng Z, Zhao J, Zhang J. Application of three-dimensional reconstruction with a Hisense computer-assisted system in upper pancreatic lymph node dissection during laparoscopic-assisted radical gastrectomy. *Asian J Surg* 2021; **44**: 730-737 [PMID: 33500172 DOI: 10.1016/j.asjsur.2020.12.034]
- 13 **Mishra S**, Sabnis RB, Desai M. Staghorn morphometry: a new tool for clinical classification and prediction model for percutaneous nephrolithotomy monotherapy. *J Endourol* 2012; **26**: 6-14 [PMID: 22050495 DOI: 10.1089/end.2011.0145]
- 14 **Guglielmetti GB**, Danilovic A, Torricelli FC, Coelho RF, Mazzucchi E, Srougi M. Predicting calyceal access for percutaneous nephrolithotomy with computed tomography multiplanar reconstruction. *Clinics (Sao Paulo)* 2013; **68**: 892-895 [PMID: 23778484 DOI: 10.6061/clinics/2013(06)27]
- 15 **Ghani KR**, Andonian S, Bultitude M, Desai M, Giusti G, Okhunov Z, Preminger GM, de la Rosette J. Percutaneous Nephrolithotomy: Update, Trends, and Future Directions. *Eur Urol* 2016; **70**: 382-396 [PMID: 26876328 DOI: 10.1016/j.eururo.2016.01.047]
- 16 **Thiruchelvam N**, Mostafid H, Ubhayakar G. Planning percutaneous nephrolithotomy using multidetector computed tomography urography, multiplanar reconstruction and three-dimensional reformatting. *BJU Int* 2005; **95**: 1280-1284 [PMID: 15892817 DOI: 10.1111/j.1464-410X.2005.05519.x]
- 17 **Desai M**, De Lisa A, Turna B, Rioja J, Walfridsson H, D'Addessi A, Wong C; Rosette On Behalf Of The Croes Pcnl Study Group J. The clinical research office of the endourological society percutaneous nephrolithotomy global study: Staghorn vs nonstaghorn stones. *J Endourol* 2011; **25**: 1263-1268 [DOI: 10.1089/end.2011.0055]
- 18 **Fang YQ**, Wu JY, Li TC, Zheng HF, Liang GC, Chen YX, Hong XB, Cai WZ, Zang ZJ, Di JM. Computer tomography urography assisted real-time ultrasound-guided percutaneous nephrolithotomy on renal calculus. *Medicine (Baltimore)* 2017; **96**: e7215 [PMID: 28614270 DOI: 10.1097/MD.00000000000007215]
- 19 **Akand M**, Buyukaslan A, Servi S, Cevik L. A hypothetical method for calculation of the access point, direction angle and access angle for percutaneous nephrolithotomy. *Med Hypotheses* 2019; **124**: 101-104 [PMID: 30798901 DOI: 10.1016/j.mehy.2019.02.007]
- 20 **Lima E**, Rodrigues PL, Mota P, Carvalho N, Dias E, Correia-Pinto J, Autorino R, Vilaça JL. Ureterscopy-assisted Percutaneous Kidney Access Made Easy: First Clinical Experience with a Novel Navigation System Using Electromagnetic Guidance (IDEAL Stage 1). *Eur Urol* 2017; **72**: 610-616 [PMID: 28377202 DOI: 10.1016/j.eururo.2017.03.011]
- 21 **Rassweiler-Seyfried MC**, Rassweiler JJ, Weiss C, Müller M, Meinzer HP, Maier-Hein L, Klein JT. iPad-assisted percutaneous nephrolithotomy (PCNL): a matched pair analysis compared to standard PCNL. *World J Urol* 2020; **38**: 447-453 [PMID: 31073641 DOI: 10.1007/s00345-019-02801-y]
- 22 **Brehmer M**, Beckman MO, Magnusson A. Three-dimensional computed tomography planning improves percutaneous stone surgery. *Scand J Urol* 2014; **48**: 316-323 [PMID: 24521181 DOI: 10.3109/21681805.2013.876552]
- 23 **Tsaturyan A**, Bellin A, Barbuto S, Zampakis P, Ntzanis E, Lattarulo M, Kalogeropoulou C, Liatsikos E, Kallidonis P; Collaborators. Technical aspects to maximize the hyperaccuracy three-dimensional (HA3D™) computed tomography reconstruction for kidney stones surgery: a pilot study. *Urolithiasis* 2021; **49**: 559-566 [PMID: 33811497 DOI: 10.1007/s00240-021-01262-6]
- 24 **Biswas K**, Gupta SK, Tak GR, Ganpule AP, Sabnis RB, Desai MR. Comparison of STONE score, Guy's stone score and Clinical Research Office of the Endourological Society (CROES) score as predictive tools for percutaneous nephrolithotomy outcome: a prospective study. *BJU Int* 2020; **126**: 494-501 [PMID: 32506712 DOI: 10.1111/bju.15130]
- 25 **de la Rosette J**, Assimos D, Desai M, Gutierrez J, Lingeman J, Scarpa R, Tefekli A; CROES PCNL Study Group. The Clinical Research Office of the Endourological Society Percutaneous Nephrolithotomy Global Study: indications, complications, and outcomes in 5803 patients. *J Endourol* 2011; **25**: 11-17 [PMID: 21247286 DOI: 10.1007/s00240-010-1164-8]

- 10.1089/end.2010.0424]
- 26 **Kyriazis I**, Panagopoulos V, Kallidonis P, Özsoy M, Vasilas M, Liatsikos E. Complications in percutaneous nephrolithotomy. *World J Urol* 2015; **33**: 1069-1077 [PMID: [25218854](#) DOI: [10.1007/s00345-014-1400-8](#)]
- 27 **Oo MM**, Gandhi HR, Chong KT, Goh JQ, Ng KW, Hein AT, Tan YK. Automated Needle Targeting with X-ray (ANT-X) - Robot-assisted device for percutaneous nephrolithotomy (PCNL) with its first successful use in human. *J Endourol* 2021; **35**: e919 [PMID: [29699415](#) DOI: [10.1089/end.2018.0003](#)]
- 28 **Marchini GS**, Berto FC, Vicentini FC, Shan CJ, Srougi M, Mazzucchi E. Preoperative planning with noncontrast computed tomography in the prone and supine position for percutaneous nephrolithotomy: a practical overview. *J Endourol* 2015; **29**: 6-12 [PMID: [25025863](#) DOI: [10.1089/end.2014.0299](#)]



Published by **Baishideng Publishing Group Inc**  
7041 Koll Center Parkway, Suite 160, Pleasanton, CA 94566, USA

**Telephone:** +1-925-3991568

**E-mail:** [bpgoffice@wjgnet.com](mailto:bpgoffice@wjgnet.com)

**Help Desk:** <https://www.f6publishing.com/helpdesk>

<https://www.wjgnet.com>

