

World Journal of *Gastrointestinal Pathophysiology*

World J Gastrointest Pathophysiol 2022 May 22; 13(3): 59-113



Contents

Bimonthly Volume 13 Number 3 May 22, 2022

REVIEW

- 59 Gut microbiome: Linking together obesity, bariatric surgery and associated clinical outcomes under a single focus

Georgiou K, Belev NA, Koutouratsas T, Katifelis H, Gazouli M

ORIGINAL ARTICLE

Basic Study

- 73 Evaluating the regulation of transporter proteins and P-glycoprotein in rats with cholestasis and its implication for digoxin clearance

Giroux P, Kyle PB, Tan C, Edwards JD, Nowicki MJ, Liu H

Retrospective Study

- 85 Increasing thirty-day readmissions of Crohn's disease and ulcerative colitis in the United States: A national dilemma

Dahiya DS, Perisetti A, Kichloo A, Singh A, Goyal H, Rotundo L, Vennikandam M, Shaka H, Singh G, Singh J, Pisipati S, Al-Haddad M, Sanaka MR, Inamdar S

Observational Study

- 96 Utility of FibroScan-based scoring systems to narrow the risk group of nonalcoholic fatty liver disease with comorbidities

Miura K, Maeda H, Morimoto N, Watanabe S, Tsukui M, Takaoka Y, Nomoto H, Goka R, Kotani K, Yamamoto H

CASE REPORT

- 107 Gastric cancer with concurrent pancreatic schwannoma: A case report

Ribeiro MB, Abe ES, Kondo A, Safatle-Ribeiro AV, Pereira MA, Zilberstein B, Ribeiro Jr U

ABOUT COVER

Editorial Board Member of *World Journal of Gastrointestinal Pathophysiology*, João Batista M Tajra, MD, MsC, PhD, Chief Doctor, Full Professor, Surgeon Coloproctology Department, Hospital de Base do Distrito Federal, Brasília 71215770, Distrito Federal, Brazil. joao003905@unieuro.com.br

AIMS AND SCOPE

The primary aim of the *World Journal of Gastrointestinal Pathophysiology* (WJGP, *World J Gastrointest Pathophysiol*) is to provide scholars and readers from various fields of gastrointestinal pathophysiology with a platform to publish high-quality basic and clinical research articles and communicate their research findings online.

WJGP mainly publishes articles reporting research results and findings obtained in the field of gastrointestinal pathophysiology and covering a wide range of topics including disorders of the esophagus, stomach and duodenum, small intestines, pancreas, biliary system, and liver.

INDEXING/ABSTRACTING

The WJGP is now abstracted and indexed in Emerging Sources Citation Index (Web of Science), PubMed, PubMed Central, Reference Citation Analysis, China National Knowledge Infrastructure, China Science and Technology Journal Database, and Superstar Journals Database.

RESPONSIBLE EDITORS FOR THIS ISSUE

Production Editor: Yi-Xuan Cai; Production Department Director: Xu Guo; Editorial Office Director: Jia-Ping Yan.

NAME OF JOURNAL

World Journal of Gastrointestinal Pathophysiology

ISSN

ISSN 2150-5330 (online)

LAUNCH DATE

April 15, 2010

FREQUENCY

Bimonthly

EDITORS-IN-CHIEF

Tsutomu Nishida, Somchai Amornymotin, Kusum K Kharbanda

EDITORIAL BOARD MEMBERS

<https://www.wjgnet.com/2150-5330/editorialboard.htm>

PUBLICATION DATE

May 22, 2022

COPYRIGHT

© 2022 Baishideng Publishing Group Inc

INSTRUCTIONS TO AUTHORS

<https://www.wjgnet.com/bpg/gerinfo/204>

GUIDELINES FOR ETHICS DOCUMENTS

<https://www.wjgnet.com/bpg/gerinfo/287>

GUIDELINES FOR NON-NATIVE SPEAKERS OF ENGLISH

<https://www.wjgnet.com/bpg/gerinfo/240>

PUBLICATION ETHICS

<https://www.wjgnet.com/bpg/gerinfo/288>

PUBLICATION MISCONDUCT

<https://www.wjgnet.com/bpg/gerinfo/208>

ARTICLE PROCESSING CHARGE

<https://www.wjgnet.com/bpg/gerinfo/242>

STEPS FOR SUBMITTING MANUSCRIPTS

<https://www.wjgnet.com/bpg/gerinfo/239>

ONLINE SUBMISSION

<https://www.f6publishing.com>



Observational Study

Utility of FibroScan-based scoring systems to narrow the risk group of nonalcoholic fatty liver disease with comorbidities

Kouichi Miura, Hiroshi Maeda, Naoki Morimoto, Shunji Watanabe, Mamiko Tsukui, Yoshinari Takaoka, Hiroaki Nomoto, Rie Goka, Kazuhiko Kotani, Hironori Yamamoto

Specialty type: Gastroenterology and hepatology

Provenance and peer review: Invited article; Externally peer reviewed.

Peer-review model: Single blind

Peer-review report's scientific quality classification

Grade A (Excellent): 0
Grade B (Very good): 0
Grade C (Good): C
Grade D (Fair): 0
Grade E (Poor): E

P-Reviewer: Cao X, China; Portius D, Germany

Received: January 8, 2022

Peer-review started: January 8, 2022

First decision: March 9, 2022

Revised: March 21, 2022

Accepted: May 14, 2022

Article in press: May 14, 2022

Published online: May 22, 2022



Kouichi Miura, Hiroshi Maeda, Naoki Morimoto, Shunji Watanabe, Mamiko Tsukui, Yoshinari Takaoka, Hiroaki Nomoto, Rie Goka, Hironori Yamamoto, Department of Medicine, Division of Gastroenterology, Jichi Medical University School of Medicine, 3311-1 Yakushiji, Shimotsuke 329-0498, Tochigi, Japan

Kazuhiko Kotani, Division of Community and Family Medicine, Center for Community Medicine, Jichi Medical University, 3311-1 Yakushiji, Shimotsuke 329-0498, Japan

Corresponding author: Kouichi Miura, Doctor, Associate Professor, Department of Medicine, Division of Gastroenterology, Jichi Medical University School of Medicine, 3311-1 Yakushiji, Shimotsuke 329-0498, Tochigi, Japan. miura385@jichi.ac.jp

Abstract

BACKGROUND

Vibration-controlled transient elastography (VCTE) is proposed as a second step of examination to assess liver fibrosis in patients with nonalcoholic fatty liver disease (NAFLD) after triaging by the fibrosis-4 (FIB-4) index. Recently, VCTE-based scoring systems, including FibroScan-AST (FAST), Agile 3+, and Agile 4, emerged to determine the status of NAFLD. However, the significance of these scoring systems remains unknown in narrowing the high-risk group of NAFLD patients with comorbidities, including hepatocellular carcinoma (HCC) and esophagogastric varices (EGV).

AIM

To clarify the significance of VCTE-based scoring systems to narrow the high-risk group of NAFLD patients with comorbidities.

METHODS

We performed a cross-sectional study to investigate the usefulness of VCTE-based scoring systems and other fibrosis markers to narrow the high-risk group of patients with NAFLD. FIB-4 index was used for the first triage. Risk groups of FAST, Agile 3+, and Agile 4 were stratified according to the published data. Among the 191 patients with NAFLD, there were 26 (14%) and 25 patients (13%) with HCC and EGV, respectively.

RESULTS

When 1.3 was used as a cutoff value, the FIB-4 index narrowed the risk group to

120 patients, in which all patients with HCC and/or EGV were included. High risk group of Agile 3+ could subsequently narrow the risk group. The prevalence of HCC and EGV at this step were 33% (26/80) and 31% (25/80), respectively. In further narrowing of EGV, Agile 4 aggregated the patients with EGV into 43 patients, of whom 23 (53%) had EGV. FAST failed to narrow the risk group of patients with comorbidities. When 2.6 was used as a cutoff value of the FIB-4 index, three patients with HCC and two patients with EGV were missed at the first triage.

CONCLUSION

Agile 3+ and Agile 4 are useful to narrow the NAFLD patient group, in which patients may have HCC and/or EGV.

Key Words: Nonalcoholic fatty liver disease; Vibration controlled transient elastography; Non-invasive test; Hepatocellular carcinoma; Varix

©The Author(s) 2022. Published by Baishideng Publishing Group Inc. All rights reserved.

Core Tip: It is necessary to narrow the high-risk group of nonalcoholic fatty liver disease (NAFLD) patients with comorbidities, including hepatocellular carcinoma (HCC) and esophagogastric varices (EGV). Although the fibrosis-4 index is an excellent formula to narrow the high-risk group, there remain many patients to be ruled out. Vibration controlled transient elastography (VCTE) is proposed as a second step examination. FibroScan-AST, Agile 3+, and Agile 4 emerged as VCTE-based scoring systems to determine the status of patients with NAFLD. Here, we demonstrated that Agile 3+ and Agile 4 are good tools to narrow the high-risk group of patients with HCC and/or EGV.

Citation: Miura K, Maeda H, Morimoto N, Watanabe S, Tsukui M, Takaoka Y, Nomoto H, Goka R, Kotani K, Yamamoto H. Utility of FibroScan-based scoring systems to narrow the risk group of nonalcoholic fatty liver disease with comorbidities. *World J Gastrointest Pathophysiol* 2022; 13(3): 96-106

URL: <https://www.wjgnet.com/2150-5330/full/v13/i3/96.htm>

DOI: <https://dx.doi.org/10.4291/wjgp.v13.i3.96>

INTRODUCTION

Nonalcoholic fatty liver disease (NAFLD) is the most common chronic liver disease worldwide. A subset of patients with NAFLD can progress to liver cirrhosis, in which patients may have comorbidities, including hepatocellular carcinoma (HCC) and esophagogastric varices (EGV). Current studies have demonstrated that liver fibrosis is a prognostic factor of patients with NAFLD because comorbidities of NAFLD are noted in patients with liver fibrosis[1,2]. Thus, the assessment of liver fibrosis is essential to identifying patients with comorbidities.

Although liver biopsy remains the gold standard to assess liver fibrosis, it is costly and has a risk of complications, including bleeding. In addition, it is difficult to perform liver biopsy in all patients with NAFLD because the global prevalence of patients with NAFLD is approximately 25%[3]. Thus, the demand for noninvasive tests (NITs) to assess liver fibrosis is expanding. Currently, there are several markers and formulae to assess liver fibrosis using clinical parameters without liver biopsy[4]. In addition, imaging studies, including elastography and magnetic resonance imaging (MRI), are used as NITs for the assessment of liver fibrosis. Each method has both advantages and disadvantages. Among NITs, the fibrosis-4 (FIB-4) index is a widely used formula because this formula uses only 4 components, including age, aspartate aminotransferase (AST), alanine aminotransferase (ALT), and platelet count[5], which are easily available not only for hepatologists but also for general physicians. The merits of using the FIB-4 index are high accuracy and low cost[6]. In addition, many validation studies have been performed in chronic liver diseases, including NAFLD. Furthermore, the FIB-4 index is useful for identifying NAFLD patients with extrahepatic comorbidities, including cardiovascular diseases[7]. However, elderly patients tend to show a high score. In addition, there are many patients who show an intermediate risk for liver fibrosis. As a result, the FIB-4 index is used in the first step to narrow the high-risk group of patients who may have comorbidities of NAFLD.

FibroScan, a vibration-controlled transient elastography (VCTE), is proposed as the second step of NIT that can identify such patients[8]. Liver stiffness measurement (LSM) ≥ 11.9 KPa by FibroScan is highly suspected of liver fibrosis over F4[9]. Although FibroScan shows high sensitivity and specificity in the diagnosis of liver fibrosis, some patients have unexpectedly high LSM, probably due to the presence of obesity and the examiners' skill. Thus, a combination of LSM and laboratory data may reflect a more accurate status of patients with NAFLD. To this end, FibroScan-based scoring systems,

including FibroScan-AST (FAST)[10], Agile 3+[11] and Agile 4[12], have been developed. These scoring systems use data obtained from FibroScan and some clinical parameters, including age, sex, AST, ALT, platelet count, and diabetes status. Among these scoring systems, FAST was designed to identify NAFLD patients with liver fibrosis $F \geq 2$. Agile 3+ and Agile 4 were designed to identify NAFLD patients with liver fibrosis at F3-F4 and F4, respectively. Although these FibroScan-based scoring systems are correlated with liver fibrosis, little data are available on the significance of identifying NAFLD patients with comorbidities. Thus, the aim of the present cross-sectional study was to investigate the utility of these FibroScan-based scoring systems to narrow the high-risk group of NAFLD patients with comorbidities after triaging by the FIB-4 index.

MATERIALS AND METHODS

Patients

We investigated 191 patients with NAFLD who visited our hospital between April 2019 and March 2022. The diagnosis of NAFLD was made as follows: Steatosis was determined by an ultrasonographic examination conducted by well-experienced gastroenterologists. Steatosis pointing out past examinations was included. Men who used alcohol > 30 g/d and women who used > 20 g/d were excluded. Patients with HBV infection (positive for HBs antigen), HCV infection (positive for HCV antibody) and other liver diseases, including autoimmune hepatitis and primary biliary cholangitis, were also excluded. In addition, we used data obtained from FibroScan as well as blood tests, including the FIB-4 index and *Wisteria floribunda* agglutinin-positive Mac2-binding protein glycosylation isomer (M2BPGi). Diagnosis of diabetes was defined as a fasting blood glucose ≥ 126 mg/dL, hemoglobin A1c $\geq 6.5\%$ and/or antidiabetic drug use. All patients in the present study had FibroScan examination as well as blood tests. This study was approved by the Institutional Review Board of Jichi Medical University (20-175). The study was performed according to the ethical guidelines of the Declaration of Helsinki.

FibroScan-based scoring systems

Transient elastography was performed with FibroScan (Echosens, Paris, France), using an M probe. The FIB-4 index, FAST score, Agile 3+, and Agile 4 were calculated according to published formulae using age, controlled attenuation parameter (CAP), LSM, AST, ALT, platelet count, and presence of diabetes (Supplementary Figure 1). The impact of these parameters on the scoring systems were shown in Supplementary Table 1. Blood data obtained on the same day of FibroScan examination or within 1 mo from the examination were used (Supplementary Figure 2). CAP and LSM were the mean data of 10 consecutive examinations.

Risk assessments for each formula and factor are shown in Supplementary Table 2. In addition, Baveno VI criteria[13], expanded Baveno VI criteria[14], and New NFLD-cirrhosis criteria[15] were also assessed in narrowing the risk group of patients with EGV.

Diagnosis of HCC and EGV

The diagnosis of HCC was made by hepatologists and radiologists using contrast-enhanced computed tomography and/or contrast-enhanced MRI and/or contrast-enhanced ultrasonography. Histologically proven HCC were also added. Form 1 \leq were defined as having EGV in patients who underwent esophagogastroduodenal endoscopy (EGD)[16,17]. Patients with histories of HCC and/or endoscopic variceal treatment were included as shown in Supplementary Figure 2. If patients did not have EGD examination within 1 year, we interviewed a history of gastrointestinal bleeding from gastrointestinal varices. If patients reported no history of variceal bleeding, the patient was defined as having no EGV.

Statistical analysis

Statistical analyses were performed using Stata 17 (STATA Corporation, College Station, United States). Sensitivity, specificity, positive predictive value (PPV), and negative predictive value (NPV) were calculated. For patient background evaluation, analyses were performed by the chi-square test or Fisher's test as appropriate. In addition, the Mann-Whitney U test was used in a comparison of two groups. In a comparison of three groups, one-way analysis of variance was used. All *P* values < 0.05 were considered statistically significant.

RESULTS

The characteristics of NAFLD patients with HCC and/or EGV

Table 1 shows the characteristics of patients. The median age was 62 years old, 81 (42.4%) were male, and 75 (39.3%) had diabetes. There were 26 patients with HCC and 25 patients with EGV. Among these patients with HCC and/or EGV, 17 had HCC alone, 16 had EGV alone, and 9 had both HCC and EGV.

Table 1 Characteristics of patients with nonalcoholic fatty liver disease

Patients (n)	191
Age (years old)	62 (20-90)
Men (%)	81 (42.4)
diabetes (%)	75 (39.3)
HCC	17
EGV	16
Both HCC and EGV	9
AST (U/L)	36 (13-208)
ALT (U/L)	40 (10-214)
Platelet count ($\times 10^9/L$)	207 (45-445)

AST: Aspartate aminotransferase; ALT: Alanine aminotransferase; EGV: Esophagogastric varices; HCC: Hepatocellular carcinoma.

Then, we investigated the scores and values of each formula and marker in patients with HCC and/or EGV (Figure 1). In FIB-4 and FAST, the maximum and the minimum of scores were similar among patients with HCC and/or EGV. In Agile 3+, patients with HCC and/or EGV aggregated into a zone of high score. In Agile 4, LSM, and M2BPGi, the score and values tended to show a stepwise increase from HCC, EGV, and both HCC and EGV.

The high to intermediate-risk group of FIB-4 index includes all patients with HCC and/or EGV

In a stratification of the FIB-4 index, there were 71, 51, and 69 patients in the low-, intermediate-, and high-risk groups, respectively. No patients with HCC and/or EGV were noted in the low-risk group of the FIB-4 index, while three patients with HCC and two patients with EGV were in the intermediate stage. The remaining patients with HCC and/or EGV were in the high-risk group (Tables 2 and 3). Thus, the high to intermediate-risk group of FIB-4 index is suitable for the first triage.

The high-risk group of Agile 3+ includes all patients with HCC and/or HGV

Then, we investigated the prevalence of patients with HCC and/or EGV (Tables 2 and 3). When the patients were divided into two groups, including low-risk and high to intermediate-risk, there were no patients with HCC and/or EGV in the low-risk group of Agile 3+ (Table 2). In addition, Agile 3+ was the only examination that included all patients with HCC and/or EGV in the high-risk group (Table 3). As a result, Agile 3+ showed extremely high sensitivity and NPV. In contrast, there were patients with HCC in the low-risk group of FAST, Agile 4, LSM, and M2BPGi and patients with EGV in the low-risk group of FAST, Agile 4, and M2BPGi (Table 2), suggesting that FAST, Agile 4, LSM, and M2BPGi are unsuitable for screening of patients with HCC and/or EGV. Thus, Agile 3+ is a good tool to narrow the high-risk group of patients with HCC and/or EGV.

Agile 4 is a potential tool to narrow the patients with EGV

Although the Agile 3+ could narrow the patients with EGV, we further attempted to narrow the patients with EGV. Patients with EGV tended to have a more advanced stage of fibrosis based on Agile 4, LSM, and M2BPGi (Figure 1). Although there were no patients with EGV in the low-risk group of LSM, the PPV was 21% (Table 2). In contrast, the high-risk groups of Agile 4 and M2BPGi missed one patient with EGV, their PPVs were higher than that of LSM. In addition, the PPV of the high-risk group of Agile 4 was 56%, the highest among tests (Table 3). Despite the high-risk group of Agile 4 missed two patients with EGV, Agile 4 is a potential tool to narrow the risk group of patients with EGV.

Baveno VI and its derivatives did not work in our patient group

Baveno VI criteria, expanded Baveno VI criteria, and new NAFLD-cirrhosis criteria, using LSM and platelet count, are simple tools to rule out patients with varices needing treatment. There were 13 (52%), 17 (68%), and 19 patients (76%) with EGV who were defined as “rule out” of the Baveno VI criteria, expanded Baveno VI criteria, and new NAFLD-cirrhosis criteria, respectively (Table 4). Thus, it was difficult to narrow the patients with EGV using a combination of LSM and platelet count.

Agile 3+ and Agile 4 are good tools to narrow the patients with HCC and/or EGV

We applied our patient group to determine whether VCTE-based scoring systems and other fibrosis markers can narrow the risk group of patients with HCC and/or EGV after triaging by the FIB-4 index (Figure 2A). There were 26 patients with HCC (14%) and 25 patients with EGV (13%) among 191

Table 2 Sensitivity, specificity, positive predictive value, and negative predictive value of each score and marker (L vs I-H)

	FIB-4		FAST		Agile 3+		Agile 4		LSM		M2BPGi	
Risk	L	I-H	L	I-H	L	I-H	L	I-H	L	I-H	L	I-H
<i>n</i>	71	120	87	104	96	95	131	60	73	118	102	89
HCC	0	26	10	16	0	26	7	19	4	22	5	21
<i>P</i> value	< 0.01		0.44		< 0.01		< 0.01		< 0.01		< 0.01	
Sensitivity	1		0.62		1		0.73		0.85		0.81	
Specificity	0.43		0.53		0.58		0.79		0.44		0.62	
PPV	0.22		0.17		0.27		0.36		0.19		0.25	
NPV	1		0.90		1		0.95		0.95		0.95	
EGV	0	25	6	19	0	25	1	24	0	25	1	24
<i>P</i> value	< 0.01		0.02		< 0.01		< 0.01		< 0.01		< 0.01	
Sensitivity	1		0.76		1		0.96		1		0.96	
Specificity	0.43		0.52		0.58		0.79		0.44		0.61	
PPV	0.21		0.19		0.26		0.41		0.21		0.27	
NPV	1		0.94		1		0.99		1		0.99	

L: Low-risk; I: Intermediate-risk; H: High-risk; HCC: Hepatocellular carcinoma; EGV: Esophagogastric varix; HCC: Hepatocellular carcinoma; EGV: Esophagogastric varices; PPV: Positive predictive value, NPV: Negative predictive value; M2BPGi: Mac2-binding protein glycosylation isomer; FAST: FibroScan-AST; FIB-4: Fibrosis-4; LSM: Liver stiffness measurement.

Table 3 Sensitivity, specificity, positive predictive value, and negative predictive value of each score and marker (L-I vs H)

	FIB-4		FAST		Agile 3+		Agile 4		LSM		M2BPGi	
Risk	L-I	H	L-I	H	L-I	H	L-I	H	L-I	H	L-I	H
<i>n</i>	122	69	146	45	111	80	148	43	136	55	148	43
HCC	3	23	18	8	0	26	12	14	10	16	11	15
<i>P</i> value	< 0.01		0.35		< 0.01		< 0.01		< 0.01		< 0.01	
Sensitivity	0.89		0.31		1		0.54		0.62		0.58	
Specificity	0.74		0.89		0.67		0.90		0.82		0.90	
PPV	0.35		0.30		0.33		0.45		0.36		0.47	
NPV	0.98		0.89		1		0.93		0.93		0.93	
EGV	2	23	14	11	0	25	2	23	3	22	4	21
<i>P</i> value	< 0.01		0.01		< 0.01		< 0.01		< 0.01		< 0.01	
Sensitivity	0.92		0.44		1		0.92		0.88		0.84	
Specificity	0.74		0.88		0.67		0.89		0.82		0.89	
PPV	0.34		0.36		0.31		0.56		0.42		0.54	
NPV	0.98		0.91		1		0.99		0.98		0.97	

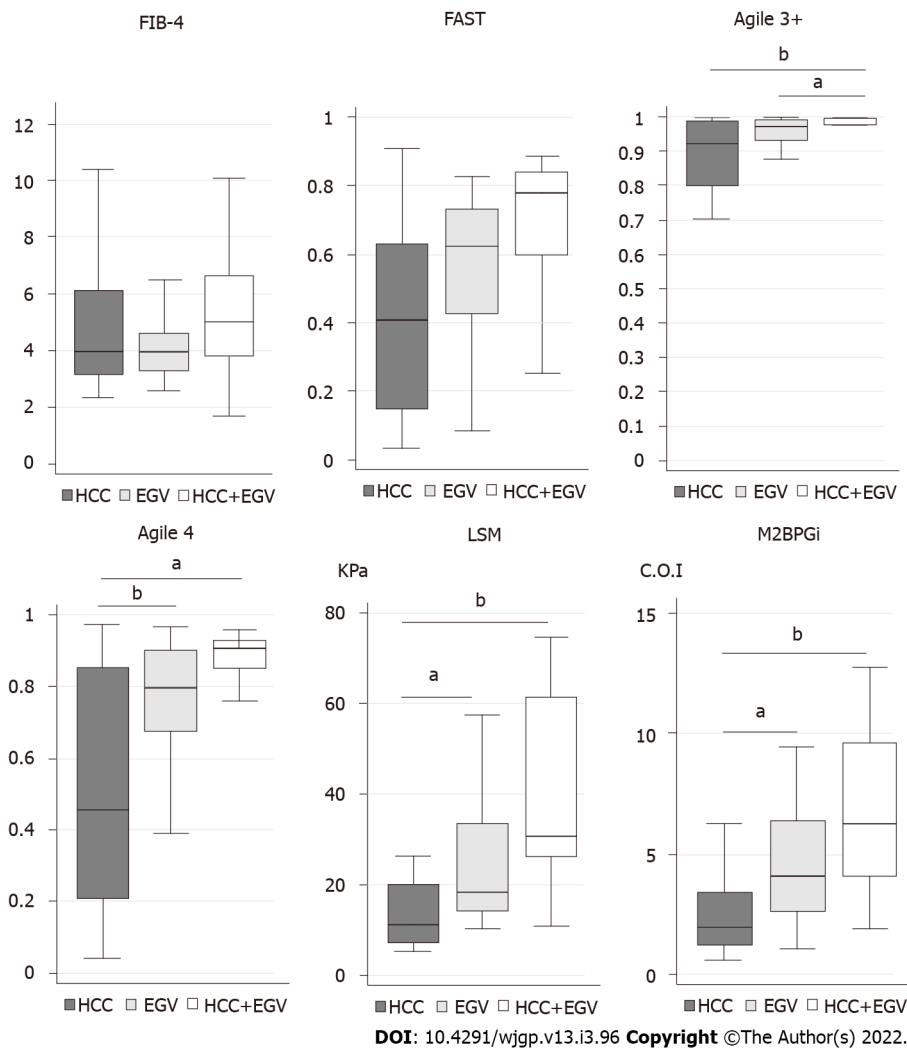
EGV: Esophagogastric varices; HCC: Hepatocellular carcinoma; PPV: Positive predictive value; NPV: Negative predictive value; M2BPGi: Mac2-binding protein glycosylation isomer; FAST: FibroScan-AST; FIB-4: Fibrosis-4; LSM: Liver stiffness measurement.

patients. At the first triage using the FIB-4 index at 1.3 (high to intermediate-risk group), we could narrow the risk group to 120 patients, in whom all patients with HCC and/or EGV were included. In the first step, the prevalence of HCC and EGV was 22% (26/120) and 21% (25/120), respectively. Then, we narrowed the patients using Agile 3+ at the second step, in which all patients with HCC and/or

Table 4 The prevalence of esophagogastric varices in Baveno VI criteria and its derivatives

	Baveno VI		Exp. Baveno VI		New NASH C.C	
	LSM	platelet	LSM	platelet	LSM	platelet
	< 20	150 <	< 25	110 <	< 30	110 <
EGV/rule in (<i>n</i>)	12/26		8/13		6/9	
EGV/rule out (<i>n</i>)	13/165		17/178		19/182	

Exp. Baveno VI: Expanded Baveno VI; New NASH C.C: New NASH cirrhosis criteria; LSM: Liver stiffness measurement (KPa); Platelet count ($\times 10^9/L$); EGV: Esophagogastric varix.

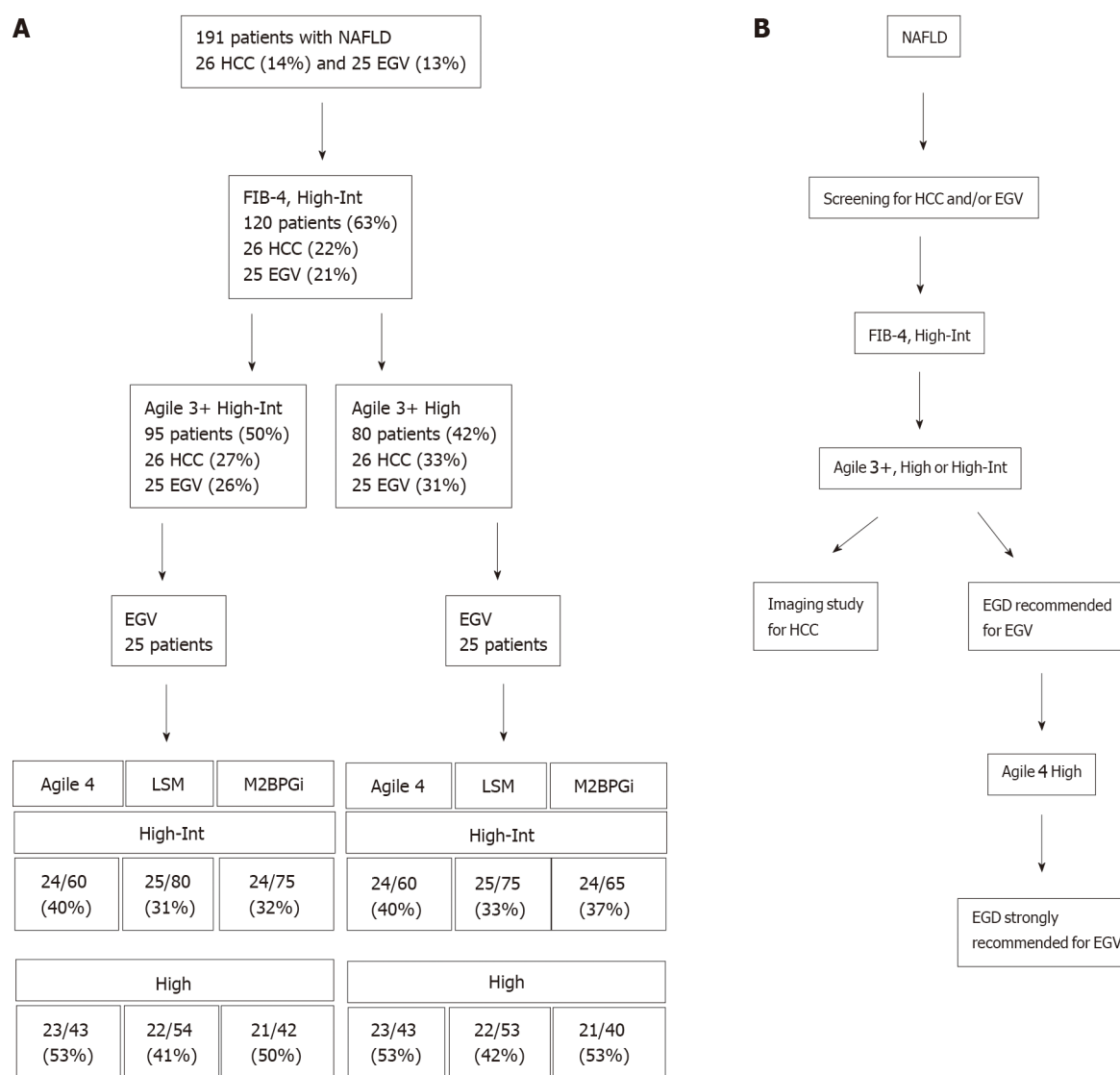


DOI: 10.4291/wjgp.v13.i3.96 Copyright ©The Author(s) 2022.

Figure 1 Scores (Fibrosis-4, FibroScan-AST, Agile 3+, Agile 4) and values (Liver stiffness measurement, Mac2-binding protein glycosylation isomer) of patients with hepatocellular carcinoma (*n* = 17), esophagogastric varices (*n* = 16), and both hepatocellular carcinoma and esophagogastric varices (*n* = 9). ^a*P* < 0.05, ^b*P* < 0.01. HCC: Hepatocellular carcinoma; EGV: Esophagogastric varices; LSM: Liver stiffness measurement; FAST: FibroScan-AST; M2BPGi: Mac2-binding protein glycosylation isomer.

EGV were included. When the high to intermediate-risk group of Agile 3+ was used, the prevalence of HCC was 27% (26/95) and 26% (25/95), respectively. When the high-risk group of Agile 3+ was used, the prevalence of HCC was 33% (26/80) and 31% (25/80), respectively. Because the low-risk group of Agile 4, LSM, and M2BPGi included patients with HCC, further narrowing was difficult without missing patients with HCC.

Then, we attempted to narrow the patients with EGV. The high to intermediate and high-risk of Agile 3+ groups subsequently narrowed the patients with EGV. Although the high to intermediate-risk group of LSM successfully narrowed the risk group without missing patients with EGV, the prevalence was a



DOI: 10.4291/wjgp.v13.i3.96 Copyright ©The Author(s) 2022.

Figure 2 Flow chart. A: A flowchart in sorting nonalcoholic fatty liver disease (NAFLD) patients using the fibrosis-4 index, Agiles, and other fibrosis markers; B: A proposal algorithm to narrow the high-risk group of NAFLD patients with hepatocellular carcinoma and/or esophagogastric varices. HCC: Hepatocellular carcinoma; EGV: Esophagogastric varices; LSM: Liver stiffness measurement; M2BPGi: Mac2-binding protein glycosylation isomer; NAFLD: Nonalcoholic fatty liver disease.

small increase, up to 33% (25/75). In contrast, high-risk group of Agile 4 could concentrated the patients with EGV. Although the high-risk group of Agile 4 missed two patients (8%), the prevalence of patients with EGV increased to 53% (23/43). Thus, Agile 4 is a good tool to further narrow the risk group of patients with EGV.

Based on our results, sorting patients using the FIB-4 index, Agile 3+, and Agile 4 is a potential screening method to narrow the high-risk group of NAFLD patients with comorbidities (Figure 2B).

DISCUSSION

The requirement for NITs to narrow the risk group of patients with comorbidities is expanding because a quarter of people in the world have NAFLD, a risk factor for HCC and/or EGV. The FIB-4 index, which is simple and inexpensive, was used in the first triage to narrow the high-risk group of NAFLD patients with comorbidities. However, there remain many patients even after triage. In the present study, we demonstrated that Agile 3+ and Agile 4, VCTE-based scoring systems, were good tools for further narrowing the high-risk group of patients with HCC and/or EGV at the second and third steps, respectively.

Agile 3+, developed by Yonoussi's group, was suitable to narrow the risk group of patients with HCC and/or EGV in the present study. Agile 3+ has been designed to optimize PPV and reduce cases of intermediate stage (Gray zone) among patients with advanced liver fibrosis[11]. Our data demonstrated

that Agile 3+ had high sensitivity and high NPV for HCC and EGV. Although the number of patients in the high-risk group of Agile 3+ was larger than that of other scoring systems and fibrosis markers, Agile 3+ did not miss the patients with HCC and/or EGV, which is contrast to other tools, including FAST, Agile 4, LSM, and M2BPGi. Indeed, all patients with HCC and/or EGV were included in the high-risk group of Agile 3+, suggesting that Agile 3+ is useful for screening patients with HCC and/or EGV. Because the background liver of NAFLD patients with HCC is often characterized by less fibrosis[18], fibrosis markers sometimes fail to identify patients with HCC. Some patients with HCC were included in the low-risk group of Agile 4, LSM, and M2BPGi. The Agile 3+ scoring system includes age, AST, ALT, platelet count, LSM, sex, and diabetes. Because old age and diabetic individuals are prone to HCC [19], it is reasonable to include these variables in the scoring system to find HCC.

Agile 4, also developed by Yonoussi's group, was suitable to narrow the high-risk group of patients with EGV. Agile 4 was designed to identify patients with NASH cirrhosis. Agile 4 showed high specificity and high PPV for EGV. There were 23 (92%) and 24 patients (96%) with EGV in the high- and high to intermediate-risk groups, respectively. We also applied our patient group to the Baveno VI criteria, expanded Baveno VI criteria, and New NAFLD-cirrhosis criteria, which are combinations of LSM and platelet count. However, more than half of the patients were included in the rule-out group. In the Asian cohort, the Baveno VI criteria performed better than the expanded Baveno VI criteria[20], suggesting that Asian people may have EGV at lower LSM and higher platelet counts than people in the USA and Europe. Although it remains unknown why the Baveno VI criteria and its derivatives did not work in the present study, further studies are required. As a result, Agile 4 can be used at the third step to identify patients with EGV.

FAST failed to narrow the high-risk group of patients with HCC and/or EGV. FAST showed low sensitivity to identify such patients. In addition, there were 10 (38%) with HCC and 6 patients (23%) with EGV in the low-risk (rule out) group, respectively. FAST, designed for identifying patients with NAFLD activity score ≥ 4 and fibrosis stage ($F \geq 2$), is calculated using LSM, CAP, and AST. However, the FAST score did not include risk factors for HCC, including age, sex, and diabetes. The association between the grade of CAP, fat content in the liver, and HCC remains unknown. Izumi *et al*[21] reported that CAP was significantly lower in the HCC group than in the non-HCC group in patients with NAFLD. Indeed, our data revealed that CAP tended to be low in patients with HCC (data not shown). Thus, FAST is unlikely suitable for the screening of patients with HCC and/or EGV. However, patients with high FAST scores should be followed up because these patients have a risk of progressive NASH in the future.

There are a couple of limitations in the present study. Our study is a single-center study, and the number of patients examined was small. Thus, the bias of NAFLD population is noted. In a previous study, the proportions of patients in the low- and high-risk FIB-4 index groups were 58.3% and 10.2%, respectively, among patients with biopsy-proven NAFLD[22]. The proportions in the present study showed small size of the low-risk group (37.2%) but large size of the high-risk group (36.1%). In addition, a total of 42 patients (22.0%) had HCC and/or EGV among patients with NAFLD. Because our hospital is a referral center, patients with comorbidities were aggregated into our hospital. In addition, the present study counted patients with histories of HCC and/or EGV, suggesting that scores of FIB-4 and Agile 3+ may be higher than those when comorbidities first developed. Thus, prospective study will clarify the significance of Agiles for finding patients with HCC and/or EGV. At least, the stream from FIB-4 index to Agiles worked in narrowing the high-risk patients with HCC and/or EGV in the present study.

CONCLUSION

In conclusion, Agile 3+ and Agile 4 can narrow the high-risk group of patients who may have HCC and/or EGV after triaging by the FIB-4 index. Because Agile 3+ and Agile 4 share common parameters, including LSM and clinical data, they have a potential use in screening for such patients.

ARTICLE HIGHLIGHTS

Research background

It is necessary to narrow the high-risk group of nonalcoholic fatty liver disease (NAFLD) patients with comorbidities, including hepatocellular carcinoma (HCC) and esophagogastric varices (EGV).

Research motivation

Although the fibrosis-4 index is an excellent formula to narrow the high-risk group, there remain many patients to be ruled out.

Research objectives

This study aimed to assess the utility of VCTE-based scoring systems to narrow the risk group of nonalcoholic fatty liver disease with comorbidities.

Research methods

We performed a cross-sectional study to investigate the usefulness of VCTE-based scoring systems and other fibrosis markers to narrow the high-risk group of patients with NAFLD.

Research results

The high-risk group of Agile 3+ could narrow the patients with HCC and/or EGV without missing one patient. The high-risk group of Agile 4 showed a high PPV for patients with EGV.

Research conclusions

The brand new VCTE-based scoring systems, Agile 3+ and Agile 4, are useful to narrow the NAFLD patient group, in which patients may have HCC and/or EGV.

Research perspectives

Agile 3+ and Agile 4 will be used for screening of NAFLD patients with HCC and/or EGV.

ACKNOWLEDGEMENTS

We thank Eri Noguchi (Jichi Medical University) for her excellent assistance.

FOOTNOTES

Author contributions: Miura K designed the study and performed acquisition, analysis, interpretation of data, and drafted the initial manuscript; Maeda H participated in acquisition and analysis of data; Morimoto N participated in acquisition of data; Watanabe S participated in acquisition of data; Tsukui M participated in acquisition of data; Takaoka Y participated in acquisition of data; Nomoto H participated in acquisition of data; Goka R participated in acquisition of data; Kotani K, a specialist of biostatistics, reviewed the statistical analysis and revised the draft carefully; Yamamoto H revised the draft carefully.

Institutional review board statement: The present study was reviewed and approved by the Institutional Review Board of Jichi Medical University (20-175).

Informed consent statement: A written informed consent was waived because of the retrospective nature of this study. Instead, opt-out consent documents were shown on the website of Jichi Medical University for patients who did not wish to participate in the study.

Conflict-of-interest statement: There are no conflict of interest to report.

Data sharing statement: The data presented in this study are available on request from the corresponding author. The data are not publicly available due to privacy policies.

STROBE statement: The authors have read the STROBE Statement—checklist of items, and the manuscript was prepared and revised according to the STROBE Statement—checklist of items.

Open-Access: This article is an open-access article that was selected by an in-house editor and fully peer-reviewed by external reviewers. It is distributed in accordance with the Creative Commons Attribution NonCommercial (CC BY-NC 4.0) license, which permits others to distribute, remix, adapt, build upon this work non-commercially, and license their derivative works on different terms, provided the original work is properly cited and the use is non-commercial. See: <https://creativecommons.org/licenses/by-nc/4.0/>

Country/Territory of origin: Japan

ORCID number: Kouichi Miura 0000-0001-8036-6544; Hiroshi Maeda 0000-0003-4558-3935; Naoki Morimoto 0000-0001-9600-7407; Shunji Watanabe 0000-0002-5449-6553; Mamiko Tsukui 0000-0002-2407-0842; Yoshinari Takaoka 0000-0003-3753-6063; Hiroaki Nomoto 0000-0002-3776-2418; Rie Goka 0000-0003-4359-9220; Kazuhiko Kotani 0000-0001-8119-633X; Hironori Yamamoto 0000-0002-3601-1153.

Corresponding Author's Membership in Professional Societies: The Japanese Society of Gastroenterology, No. 030879.

S-Editor: Liu JH

L-Editor: A

P-Editor: Liu JH

REFERENCES

- 1 **Ioannou GN.** Epidemiology and risk-stratification of NAFLD-associated HCC. *J Hepatol* 2021; **75**: 1476-1484 [PMID: 34453963 DOI: 10.1016/j.jhep.2021.08.012]
- 2 **Magaz M, Baiges A, Hernández-Gea V.** Precision medicine in variceal bleeding: Are we there yet? *J Hepatol* 2020; **72**: 774-784 [PMID: 31981725 DOI: 10.1016/j.jhep.2020.01.008]
- 3 **Younossi ZM, Koenig AB, Abdelatif D, Fazel Y, Henry L, Wymer M.** Global epidemiology of nonalcoholic fatty liver disease-Meta-analytic assessment of prevalence, incidence, and outcomes. *Hepatology* 2016; **64**: 73-84 [PMID: 26707365 DOI: 10.1002/hep.28431]
- 4 **Eguchi Y, Wong G, Akhtar O, Sumida Y.** Non-invasive diagnosis of non-alcoholic steatohepatitis and advanced fibrosis in Japan: A targeted literature review. *Hepatol Res* 2020; **50**: 645-655 [PMID: 32307859 DOI: 10.1111/hepr.13502]
- 5 **Sterling RK, Lissen E, Clumeck N, Sola R, Correa MC, Montaner J, Sulkowski M, Torriani FJ, Dieterich DT, Thomas DL, Messinger D, Nelson M; APRICOT Clinical Investigators.** Development of a simple noninvasive index to predict significant fibrosis in patients with HIV/HCV coinfection. *Hepatology* 2006; **43**: 1317-1325 [PMID: 16729309 DOI: 10.1002/hep.21178]
- 6 **Sumida Y, Yoneda M, Tokushige K, Kawanaka M, Fujii H, Imajo K, Takahashi H, Eguchi Y, Ono M, Nozaki Y, Hyogo H, Koseki M, Yoshida Y, Kawaguchi T, Kamada Y, Okanoue T, Nakajima A; Japan Study Group Of Nafld Jsg-Nafld.** FIB-4 First in the Diagnostic Algorithm of Metabolic-Dysfunction-Associated Fatty Liver Disease in the Era of the Global Metabodemic. *Life (Basel)* 2021; **11** [PMID: 33672864 DOI: 10.3390/life11020143]
- 7 **Sato Y, Yoshihisa A, Kanno Y, Watanabe S, Yokokawa T, Abe S, Misaka T, Sato T, Suzuki S, Oikawa M, Kobayashi A, Yamaki T, Kunii H, Nakazato K, Saitoh SI, Takeishi Y.** Liver stiffness assessed by Fibrosis-4 index predicts mortality in patients with heart failure. *Open Heart* 2017; **4**: e000598 [PMID: 28674631 DOI: 10.1136/openhrt-2017-000598]
- 8 **Paternostro R, Reiberger T, Bucsecs T.** Elastography-based screening for esophageal varices in patients with advanced chronic liver disease. *World J Gastroenterol* 2019; **25**: 308-329 [PMID: 30686900 DOI: 10.3748/wjg.v25.i3.308]
- 9 **Hsu C, Caussy C, Imajo K, Chen J, Singh S, Kaulback K, Le MD, Hooker J, Tu X, Bettencourt R, Yin M, Sirlin CB, Ehman RL, Nakajima A, Loomba R.** Magnetic Resonance vs Transient Elastography Analysis of Patients With Nonalcoholic Fatty Liver Disease: A Systematic Review and Pooled Analysis of Individual Participants. *Clin Gastroenterol Hepatol* 2019; **17**: 630-637.e8 [PMID: 29908362 DOI: 10.1016/j.cgh.2018.05.059]
- 10 **Newsome PN, Sasso M, Deeks JJ, Paredes A, Boursier J, Chan WK, Yilmaz Y, Czernichow S, Zheng MH, Wong VW, Allison M, Tsochatzis E, Anstee QM, Sheridan DA, Eddowes PJ, Guha IN, Cobbald JF, Paradis V, Bedossa P, Miette V, Fournier-Poizat C, Sandrin L, Harrison SA.** FibroScan-AST (FAST) score for the non-invasive identification of patients with non-alcoholic steatohepatitis with significant activity and fibrosis: a prospective derivation and global validation study. *Lancet Gastroenterol Hepatol* 2020; **5**: 362-373 [PMID: 32027858 DOI: 10.1016/S2468-1253(19)30383-8]
- 11 **Younoussi ZM, Harrison SA, Newsome PN, Chan WK, Yilmaz Y, de Ledinghen V, Costentin C, Zheng MH, Wong V, Elkhatab M, Huss R, Myers RP, Foucquier J, Labourdette A, Destro M, Fourier CD, Miette V, Sandrin L, Boursier J, Sanyal A.** Development and validation of Agile 3+: novel FibroScan based score for the diagnosis of advanced fibrosis in patients with non-alcoholic fatty liver disease. *J Hepatol* 2021; **75** Suppl 2: S 257
- 12 **Younoussi ZM, Harrison SA, Newsome PN, Chan WK, Yilmaz Y, Zheng MH, Wong V, Elkhatab M, Kersey K, Myers RP, Foucquier J, Labourdette A, Destro M, Fourier CD, Miette V, Sandrin L, Sanyal A, and NASH Clinical Research Network, NIDDK, NIH.** Improving diagnosis of cirrhosis in patient with NAFLD by combining liver stiffness measurement by vibration-controlled transient elastography and routine biomarkers: A global derivation and validation study. AASLD 2020 Late-breaking Abstracts LB12
- 13 **Kamath PS, Mookerjee RP.** Individualized care for portal hypertension: Not quite yet. *J Hepatol* 2015; **63**: 543-545 [PMID: 26150255 DOI: 10.1016/j.jhep.2015.07.001]
- 14 **Augustin S, Pons M, Maurice JB, Bureau C, Stefanescu H, Ney M, Blasco H, Procopet B, Tsochatzis E, Westbrook RH, Bosch J, Berzigotti A, Abraldes JG, Genescà J.** Expanding the Baveno VI criteria for the screening of varices in patients with compensated advanced chronic liver disease. *Hepatology* 2017; **66**: 1980-1988 [PMID: 28696510 DOI: 10.1002/hep.29363]
- 15 **Petta S, Sebastiani G, Bugianesi E, Viganò M, Wong VW, Berzigotti A, Fracanzani AL, Anstee QM, Marra F, Barbara M, Calvaruso V, Cammà C, Di Marco V, Craxi A, de Ledinghen V.** Non-invasive prediction of esophageal varices by stiffness and platelet in non-alcoholic fatty liver disease cirrhosis. *J Hepatol* 2018; **69**: 878-885 [PMID: 29802949 DOI: 10.1016/j.jhep.2018.05.019]
- 16 **Beppu K, Inokuchi K, Koyanagi N, Nakayama S, Sakata H, Kitano S, Kobayashi M.** Prediction of variceal hemorrhage by esophageal endoscopy. *Gastrointest Endosc* 1981; **27**: 213-218 [PMID: 6975734 DOI: 10.1016/s0016-5107(81)73224-3]
- 17 **Hashizume M, Kitano S, Yamaga H, Koyanagi N, Sugimachi K.** Endoscopic classification of gastric varices. *Gastrointest Endosc* 1990; **36**: 276-280 [PMID: 2365213 DOI: 10.1016/s0016-5107(90)71023-1]
- 18 **Kawada N, Imanaka K, Kawaguchi T, Tamai C, Ishihara R, Matsunaga T, Gotoh K, Yamada T, Tomita Y.** Hepatocellular carcinoma arising from non-cirrhotic nonalcoholic steatohepatitis. *J Gastroenterol* 2009; **44**: 1190-1194 [PMID: 19672551 DOI: 10.1007/s00535-009-0112-0]
- 19 **Huang DQ, El-Serag HB, Loomba R.** Global epidemiology of NAFLD-related HCC: trends, predictions, risk factors and prevention. *Nat Rev Gastroenterol Hepatol* 2021; **18**: 223-238 [PMID: 33349658 DOI: 10.1038/s41575-020-00381-6]
- 20 **Sharma S, Agarwal S, Gunjan D, Kaushal K, Anand A, Saraya A.** Deciding Among Noninvasive Tools for Predicting Varices Needing Treatment in Chronic Liver Disease: An Analysis of Asian Cohort. *Am J Gastroenterol* 2020; **115**: 1650-

- 1656 [PMID: [32516202](#) DOI: [10.14309/ajg.0000000000000722](#)]
- 21 **Izumi T**, Sho T, Morikawa K, Shigesawa T, Suzuki K, Nakamura A, Ohara M, Kawagishi N, Umemura M, Shimazaki T, Kimura M, Nakai M, Suda G, Natsuizaka M, Ogawa K, Kudo Y, Nishida M, Ono K, Baba M, Furuya K, Sakamoto N. Assessing the risk of hepatocellular carcinoma by combining liver stiffness and the controlled attenuation parameter. *Hepatol Res* 2019; **49**: 1207-1217 [PMID: [31219667](#) DOI: [10.1111/hepr.13391](#)]
- 22 **Sumida Y**, Yoneda M, Hyogo H, Itoh Y, Ono M, Fujii H, Eguchi Y, Suzuki Y, Aoki N, Kanemasa K, Fujita K, Chayama K, Saibara T, Kawada N, Fujimoto K, Kohgo Y, Yoshikawa T, Okanoue T; Japan Study Group of Nonalcoholic Fatty Liver Disease (JSG-NAFLD). Validation of the FIB4 index in a Japanese nonalcoholic fatty liver disease population. *BMC Gastroenterol* 2012; **12**: 2 [PMID: [22221544](#) DOI: [10.1186/1471-230X-12-2](#)]



Published by **Baishideng Publishing Group Inc**
7041 Koll Center Parkway, Suite 160, Pleasanton, CA 94566, USA

Telephone: +1-925-3991568

E-mail: bpgoffice@wjgnet.com

Help Desk: <https://www.f6publishing.com/helpdesk>

<https://www.wjgnet.com>

