

World Journal of *Diabetes*

World J Diabetes 2023 March 15; 14(3): 130-351



Contents

Monthly Volume 14 Number 3 March 15, 2023

REVIEW

- 130 Pancreatic β -cell dysfunction in type 2 diabetes: Implications of inflammation and oxidative stress
Dludla PV, Mabhidla SE, Ziqubu K, Nkambule BB, Mazibuko-Mbeje SE, Hanser S, Basson AK, Pheiffer C, Kengne AP

MINIREVIEWS

- 147 Role of selenium in type 2 diabetes, insulin resistance and insulin secretion
Casanova P, Monleon D
- 159 Carbamylated lipoproteins in diabetes
Denimal D
- 170 AT1 receptor downregulation: A mechanism for improving glucose homeostasis
Lopez DL, Casillas OE, Jaramillo HJ, Romero-Garcia T, Vazquez-Jimenez JG
- 179 Gestational diabetes mellitus: The optimal time of delivery
Li X, Li TT, Tian RX, Fei JJ, Wang XX, Yu HH, Yin ZZ
- 188 Fixed-ratio combinations of basal insulin and glucagon-like peptide-1 receptor agonists as a promising strategy for treating diabetes
Nomoto H
- 198 Multiple influences of the COVID-19 pandemic on children with diabetes: Changes in epidemiology, metabolic control and medical care
Zucchini S, Scozzarella A, Maltoni G

ORIGINAL ARTICLE

Basic Study

- 209 miR-124 is upregulated in diabetic mice and inhibits proliferation and promotes apoptosis of high-glucose-induced β -cells by targeting EZH2
Duan XK, Sun YX, Wang HY, Xu YY, Fan SZ, Tian JY, Yu Y, Zhao YY, Jiang YL
- 222 N^ε-(carboxymethyl)lysine promotes lipid uptake of macrophage *via* cluster of differentiation 36 and receptor for advanced glycation end products
Wang ZQ, Yao HP, Sun Z
- 234 Tongxinluo promotes endothelium-dependent arteriogenesis to attenuate diabetic peripheral arterial disease
Gu JJ, Hou YL, Yan YH, Li J, Wei YR, Ma K, Wang XQ, Zhang JH, Wang DD, Li CR, Li DQ, Sun LL, Gao HL
- 255 Characterization of gut microbial and metabolite alterations in faeces of Goto Kakizaki rats using metagenomic and untargeted metabolomic approach
Zhao JD, Sun M, Li Y, Yu CJ, Cheng RD, Wang SH, Du X, Fang ZH

Retrospective Study

- 271 Clinical and biochemical predictors of intensive care unit admission among patients with diabetic ketoacidosis
Khan AA, Ata F, Iqbal P, Bashir M, Kartha A

Clinical Trials Study

- 279 Postprandial glucagon-like peptide 1 secretion is associated with urinary albumin excretion in newly diagnosed type 2 diabetes patients
Song LL, Wang N, Zhang JP, Yu LP, Chen XP, Zhang B, Yang WY

Observational Study

- 290 Prevalence of type 2 diabetes mellitus in the pediatric population of a third-level care hospital in Mexico City in 2013 and 2018
Molina-Díaz JM, Vargas-Terrez BE, Medina-Bravo PG, Martínez-Ambrosio A, Miranda-Lora AL, Klünder-Klünder M
- 299 Glucose metabolism continuous deteriorating in male patients with human immunodeficiency virus accepted antiretroviral therapy for 156 weeks
Liu DF, Zhang XY, Zhou RF, Cai L, Yan DM, Lan LJ, He SH, Tang H

META-ANALYSIS

- 313 Effectiveness and safety of traditional Chinese medicine decoction for diabetic gastroparesis: A network meta-analysis
Zhang YX, Zhang YJ, Miao RY, Fang XY, Wei JH, Wei Y, Lin JR, Tian JX

LETTER TO THE EDITOR

- 343 Ca^{2+} /cAMP ratio: An inflammatory index for diabetes, hypertension, and COVID-19
Bergantin L
- 347 Successful lifestyle modifications may underlie umbilical cord-mesenchymal stromal cell effects in type 2 diabetes mellitus
Papadopoulou A, Papadopoulos KI

ABOUT COVER

Editorial Board Member of *World Journal of Diabetes*, Guo-Xun Chen, PhD, Associate Professor, Director, Department of Nutrition, The University of Tennessee, Knoxville, TN 37909, United States. gchen6@utk.edu

AIMS AND SCOPE

The primary aim of *World Journal of Diabetes* (*WJD*, *World J Diabetes*) is to provide scholars and readers from various fields of diabetes with a platform to publish high-quality basic and clinical research articles and communicate their research findings online.

WJD mainly publishes articles reporting research results and findings obtained in the field of diabetes and covering a wide range of topics including risk factors for diabetes, diabetes complications, experimental diabetes mellitus, type 1 diabetes mellitus, type 2 diabetes mellitus, gestational diabetes, diabetic angiopathies, diabetic cardiomyopathies, diabetic coma, diabetic ketoacidosis, diabetic nephropathies, diabetic neuropathies, Donohue syndrome, fetal macrosomia, and prediabetic state.

INDEXING/ABSTRACTING

The *WJD* is now abstracted and indexed in Science Citation Index Expanded (SCIE, also known as SciSearch®), Current Contents/Clinical Medicine, Journal Citation Reports/Science Edition, PubMed, PubMed Central, Reference Citation Analysis, China National Knowledge Infrastructure, China Science and Technology Journal Database, and Superstar Journals Database. The 2022 Edition of Journal Citation Reports® cites the 2021 impact factor (IF) for *WJD* as 4.560; IF without journal self cites: 4.450; 5-year IF: 5.370; Journal Citation Indicator: 0.62; Ranking: 62 among 146 journals in endocrinology and metabolism; and Quartile category: Q2.

RESPONSIBLE EDITORS FOR THIS ISSUE

Production Editor: *Yu-Xi Chen*; Production Department Director: *Xu Guo*; Editorial Office Director: *Jia-Ping Yan*.

NAME OF JOURNAL

World Journal of Diabetes

ISSN

ISSN 1948-9358 (online)

LAUNCH DATE

June 15, 2010

FREQUENCY

Monthly

EDITORS-IN-CHIEF

Lu Cai, Md. Shahidul Islam, Michael Horowitz

EDITORIAL BOARD MEMBERS

<https://www.wjnet.com/1948-9358/editorialboard.htm>

PUBLICATION DATE

March 15, 2023

COPYRIGHT

© 2023 Baishideng Publishing Group Inc

INSTRUCTIONS TO AUTHORS

<https://www.wjnet.com/bpg/gerinfo/204>

GUIDELINES FOR ETHICS DOCUMENTS

<https://www.wjnet.com/bpg/GerInfo/287>

GUIDELINES FOR NON-NATIVE SPEAKERS OF ENGLISH

<https://www.wjnet.com/bpg/gerinfo/240>

PUBLICATION ETHICS

<https://www.wjnet.com/bpg/GerInfo/288>

PUBLICATION MISCONDUCT

<https://www.wjnet.com/bpg/gerinfo/208>

ARTICLE PROCESSING CHARGE

<https://www.wjnet.com/bpg/gerinfo/242>

STEPS FOR SUBMITTING MANUSCRIPTS

<https://www.wjnet.com/bpg/GerInfo/239>

ONLINE SUBMISSION

<https://www.f6publishing.com>



Carbamylated lipoproteins in diabetes

Damien Denimal

Specialty type: Endocrinology and metabolism

Provenance and peer review:

Invited article; Externally peer reviewed.

Peer-review model: Single blind

Peer-review report's scientific quality classification

Grade A (Excellent): A
Grade B (Very good): B
Grade C (Good): 0
Grade D (Fair): 0
Grade E (Poor): 0

P-Reviewer: Luo GH, China; Wu QN, China

Received: October 27, 2022

Peer-review started: October 27, 2022

First decision: December 26, 2022

Revised: December 27, 2022

Accepted: February 10, 2023

Article in press: February 10, 2023

Published online: March 15, 2023



Damien Denimal, Department of Biochemistry, University Hospital of Dijon, Dijon 21079, France

Damien Denimal, INSERM LNC UMR1231, University of Burgundy, Dijon 21078, France

Corresponding author: Damien Denimal, PharmD, PhD, Assistant Professor, Department of Biochemistry, University Hospital of Dijon, 2 rue Ducoudray, BP 37013, Dijon 21079, France. damien.denimal@u-bourgogne.fr

Abstract

Diabetic dyslipidemia is characterized by quantitative and qualitative abnormalities in lipoproteins. In addition to glycation and oxidation, carbamylation is also a post-translational modification affecting lipoproteins in diabetes. Patients with type 2 diabetes (T2D) exhibit higher levels of carbamylated low-density lipoproteins (cLDL) and high-density lipoproteins (cHDL). Accumulating evidence suggests that cLDL plays a role in atherosclerosis in diabetes. cLDL levels have been shown to predict cardiovascular events and all-cause mortality. cLDL facilitates immune cell recruitment in the vascular wall, promotes accumulation of lipids in macrophages, and contributes to endothelial dysfunction, endothelial nitric oxide-synthase (eNOS) inactivation and endothelial repair defects. Lastly, cLDL induces thrombus formation and platelet aggregation. On the other hand, recent data have demonstrated that cHDL serum level is independently associated with all-cause and cardiovascular-related mortality in T2D patients. This relationship may be causative since the atheroprotective properties of HDL are altered after carbamylation. Thus, cHDL loses the ability to remove cholesterol from macrophages, to inhibit monocyte adhesion and recruitment, to induce eNOS activation and to inhibit apoptosis. Taken together, it seems very likely that the abnormalities in the biological functions of LDL and HDL after carbamylation contribute to atherosclerosis and to the elevated cardiovascular risk in diabetes.

Key Words: Carbamylation; Lipoprotein; Diabetes; Low-density lipoprotein; High-density lipoprotein; Myeloperoxidase

©The Author(s) 2023. Published by Baishideng Publishing Group Inc. All rights reserved.

Core Tip: There is growing evidence that carbamylation of lipoproteins occurring in diabetes contributes to the pathophysiology of atherosclerosis, and therefore plays a role in the cardiovascular risk. Numerous studies have demonstrated that carbamylated low-density lipoproteins (LDL) is more atherogenic than native LDL, citing, for instance, its role in foam cell formation or ability to damage endothelial function. In addition, carbamylated high-density lipoproteins exhibits reduced antiatherogenic properties, especially in terms of the capacity to induce cholesterol efflux from macrophages and to protect endothelium.

Citation: Denimal D. Carbamylated lipoproteins in diabetes. *World J Diabetes* 2023; 14(3): 159-169

URL: <https://www.wjgnet.com/1948-9358/full/v14/i3/159.htm>

DOI: <https://dx.doi.org/10.4239/wjd.v14.i3.159>

INTRODUCTION

The excess of cardiovascular risk in patients with type 1 (T1D) or type 2 diabetes (T2D) is multifactorial. Dyslipidemia is a major contributor to this increased cardiovascular risk. It is characterized by quantitative abnormalities of lipoproteins, and also by kinetic, qualitative and functional alterations, that make lipoproteins more atherogenic (reviewed in[1,2]). From a quantitative point of view, T2D patients typically exhibit low serum levels of high-density lipoprotein (HDL)-cholesterol, postprandial hyperlipemia, and hypertriglyceridemia, mainly due to increased very low-density lipoproteins (VLDL). In contrast, most T1D patients only have quantitative lipoprotein abnormalities if they have poor glycemic control.

In addition to these quantitative changes, lipoproteins also undergo post-translational modifications in diabetes, such as glycation, oxidation, acetylation and carbamylation, and also alterations in their lipid and protein composition. These changes give them a more atherogenic profile overall, and therefore may likely contribute to the increased cardiovascular risk in diabetes. In this review, we will focus on one of these post-translational modifications affecting lipoproteins in diabetes, namely carbamylation. Carbamylation (carbamoylation *stricto sensu*) is a non-enzymatic irreversible process mediated by isocyanate, and corresponds to the binding of a carbamoyl moiety (-CONH₂) to lysine, resulting in carbamyllysine (CML) (Figure 1). Thus, carbamylation affects the protein part of lipoproteins, primarily apolipoproteins (apo), but also other proteins. Isocyanate originates from either the spontaneous dissociation of urea, or from the myeloperoxidase (MPO)-catalyzed oxidation of thiocyanate, or to a lesser extent, from tobacco smoke or atmospheric pollution.

MPO is secreted mainly by neutrophils and monocytes at inflammatory sites including atherosclerotic plaques. It colocalizes with carbamylated proteins in human atherosclerotic lesions, and serves as a dominant pathway for promoting carbamylated proteins in atherosclerotic plaques[3]. The role of MPO in cyanate production suggests that, beyond uremia and chronic kidney disease (CKD), lipoprotein carbamylation may be also driven by inflammation, which is obviously a major phenomenon in atherosclerosis and diabetes. It has been well demonstrated that plasma MPO is increased in T1D[4-6] and T2D [7,8] diabetes. Plasma MPO level is associated with the presence of coronary artery disease[9], and above all predicts coronary artery disease[10] and cardiovascular events[11]. It should be noted right away that MPO also produces hypochlorous acid (HOCl) and peroxynitrite in addition to cyanate in atherosclerotic plaques, which can lead to lipoprotein changes other than carbamylation such as chlorination and nitration.

Accumulating evidence from *in vitro*, epidemiological, animal and human studies emphasizes an emerging role for carbamylation in atherosclerosis and diabetes. For instance, plasma levels of protein-bound CML have been shown to be independently and positively associated with the frequency of patients having cardiovascular diseases, and to predict the risk of major adverse cardiac events in the following 3 years[3]. In this review, we will focus on the role of carbamylated LDL (cLDL) and HDL (cHDL) in the pathophysiology of atherosclerosis and diabetes.

CARBAMYLATED LDL

LDL, the major transporter of cholesterol within the blood, is composed of a core of esterified cholesterol enclosed in a monolayer of phospholipids and unesterified cholesterol, together with a single molecule of apoB-100. LDL delivers lipids to peripheral tissues after binding to LDL receptors. Circulating LDL particles are able to penetrate the endothelium of arterial walls and on entrance they become oxidized, and promote endothelial dysfunction, inflammation and foam cell formation. Serum LDL-cholesterol level is an independent risk factor for cardiovascular events, and lowering it is a major goal of dyslipidemia management in current guidelines.

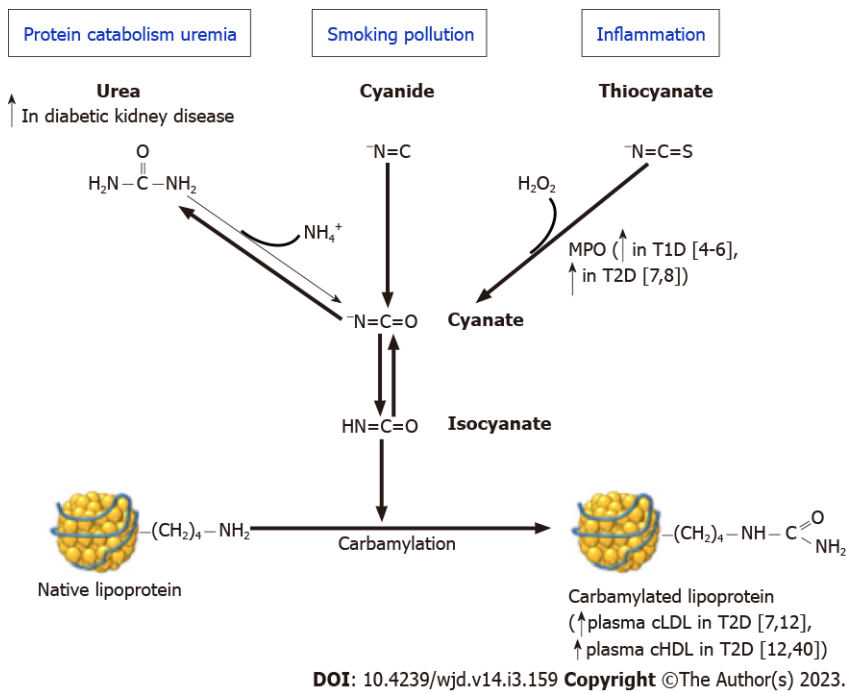
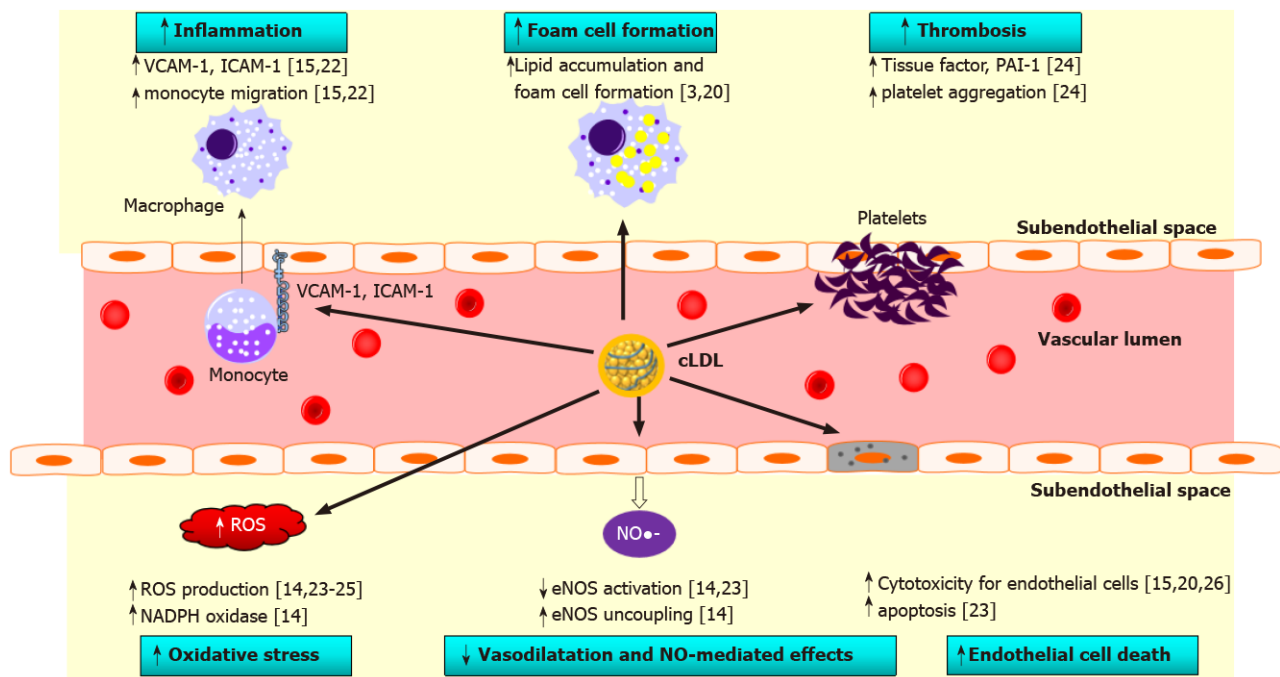


Figure 1 Carbamylation of lipoproteins is a non-enzymatic irreversible process mediated by isocyanate, and corresponds to the irreversible binding of a carbamoyl moiety to ϵ -NH₂ of lysine residues in proteins, resulting in carbamyllysine. Isocyanate originates from either the non-enzymatic spontaneous dissociation of urea, or from the myeloperoxidase (MPO)-mediated oxidation of thiocyanate, or to a lesser extent from tobacco smoke or atmospheric pollution. The urea pathway is of particular relevance in diabetic patients with chronic kidney disease. MPO level is elevated in patients with type 1 and type 2 diabetes (T2D). Plasma levels of carbamylated low-density lipoproteins and high-density lipoproteins are increased in T2D patients with or without chronic kidney disease. T2D: Type 2 diabetes; CML: Carbamyllysine; MPO: Myeloperoxidase; Lys: Lysine; cLDL: Carbamylated low-density lipoproteins; cHDL: Carbamylated high-density lipoproteins.

Beyond oxidation, LDL is also subject to carbamylation in diabetes, and it has been shown that patients with T2D[7,12] or metabolic syndrome[13], including those without CKD, exhibit higher levels of cLDL than healthy individuals. This increase is heightened even more in T2D patients with renal impairment[12]. MPO plays a major role in LDL carbamylation at inflammatory sites such as atherosclerotic lesions in diabetes. This is corroborated by the fact that plasma MPO is correlated with plasma cLDL levels in T2D patients[7]. To date, no data are available on cLDL levels in patients with T1D to our knowledge.

Numerous evidence supports the hypothesis that cLDL is more atherogenic than native LDL, and thus is likely to contribute to the increased cardiovascular risk in diabetes. At an epidemiological level, cLDL levels are predictive of cardiovascular events and all-cause mortality in patients with CKD[14]. At a cellular and molecular levels, numerous studies have shown that cLDL promotes atherosclerosis (Figure 2). First, it should be noted that cLDL shows greater accumulation in aortic subendothelial space more than native LDL[15]. In addition, cLDL is found in the aortic wall of apoE-null mice, and colocalizes with macrophage infiltration in aortic walls and atherosclerotic plaques[16]. Interestingly, the clearance of cLDL from human and rabbit plasma is modulated by the degree of carbamylation[17, 18], suggesting a longer residence time in subendothelial space.

Excessive deposition of cholesterol within arterial vessels and the development of foam cells are key features of atherosclerosis. Foam cells are derived mostly from macrophages that take up modified lipoproteins and lipoprotein-immune complexes. The various uptake mechanisms include scavenger receptors (SR) that are important particularly in the uptake of oxidized LDL (oxLDL). Several SR bind modified LDL, and are involved in the development and stability of atherosclerotic plaques, by initiating signaling cascades that regulate macrophage activation, lipid metabolism, and inflammation. It is now well established that SR-A1, SR-B2 (*i.e.*, CD36) and SR-E1 [*i.e.*, lectin-like-oxLDL receptor-1 or lipoprotein receptor-1 (LOX-1)], all expressed by multiple cell types in arterial tissue, are activated by the binding of oxLDL[19]. It has been shown that cLDL, like oxLDL, is more efficient than native LDL at inducing the accumulation of lipids in murine macrophages and promoting foam cell formation[3,20]. This effect appears to be mediated by the activation of SR. In fact, cLDL is able to bind to SR-A1, CD36, and LOX-1[15,20]. SR-A1 seems to play a crucial role in the effects of cLDL effects, because mice lacking SR-A1 are not prone to cholesterol accumulation and foam cell formation, and blockage of SR-A1 by an antibody reduces foam cell formation in murine macrophage cell cultures[3,20]. The inhibition of LOX-1 by an antibody also reduces foam cell formation, suggesting that this receptor also has a pivotal role in the effects of cLDL effects on macrophages[20]. The role of CD36 remains unclear, since cLDL-induced



DOI: 10.4239/wjd.v14.i3.159 Copyright ©The Author(s) 2023.

Figure 2 Role of carbamylated low-density lipoproteins in atherosclerosis. Carbamylated low-density lipoproteins (cLDL) facilitates immune cell recruitment in the subendothelial space by increasing the expression of adhesion molecules vascular cell adhesion molecule-1 and intercellular adhesion molecule-1. It also promotes accumulation of lipids in macrophages and thus facilitates foam cell formation. cLDL induces platelet aggregation and thrombus formation associated with a higher activity of tissue factor and plasminogen activator inhibitor type 1. In addition, cLDL activates NADPH oxidase and increases the production of reactive oxygen species. cLDL are less efficient than native LDL at activating endothelial nitric oxide synthase. Lastly, cLDL is cytotoxic for endothelial cells. VCAM-1: Vascular cell adhesion molecule-1; ICAM-1: Intercellular adhesion molecule-1; PAI-1: Plasminogen activator inhibitor type 1; cLDL: Carbamylated low-density lipoproteins; ROS: Reactive oxygen species; eNOS: Endothelial nitric oxide synthase.

foam cell formation is attenuated by an anti-CD36 antibody in murine macrophage cell cultures[20], whereas mice lacking CD36 are not more subjects to cholesterol accumulation and foam cell formation [3]. Furthermore, cLDL are less well recognized by the LDL receptor than native LDL[3,18,21].

The adhesion of monocytes to endothelium and their migration into the intima are major steps in the initiation and progression of atherosclerosis. Next, monocytes differentiate into macrophages in the arterial wall, and are prone to becoming foam cells under proatherogenic conditions. The recruitment of monocytes into the intima is triggered by an increased production of chemotactic factors in vessels such as monocyte chemoattractant protein (MCP)-1 (*i.e.*, C-C motif chemokine ligand 2), and also by an upregulation of adhesion molecules on endothelial cells, such as intercellular adhesion molecule-1 (ICAM-1), vascular cell adhesion molecule-1 (VCAM-1) and selectins. It has been shown that cLDL facilitates monocyte adhesion to endothelial cells by increasing VCAM-1 and ICAM-1 expression on endothelial cells[15,22]. However, cLDL does not modify P-selectin expression and MCP-1 production in endothelial cells[22]. The LOX-1 receptor seems to be involved in the monocyte adhesion induced by cLDL, in contrast to SR-A1 and CD36[15]. A vicious circle could be set up since cLDL induces LOX-1 expression in endothelial cells[15,23].

More broadly, cLDL promotes endothelial dysfunction, which is a cornerstone of atherosclerosis development. *Ex-vivo* experiments have shown that cLDL impairs endothelium-dependent relaxation of murine aortic rings[14]. From a mechanistic point of view, cLDL activates LOX-1 receptor and its effector p37-MAPK, thus activating NADPH-oxidase in endothelial cells[14]. Indeed, cLDL has been shown to induce more oxidative stress and reactive oxygen species (ROS) than native LDL in human umbilical vein endothelial cells (HUVEC)[23], human aortic endothelial cells[14], murine aortic rings [14], murine aorta and blood[24], and in human endothelial progenitor cells[25]. Enhanced production of ROS is known to reduce the bioavailability of endothelium-derived nitric oxide (NO), contributing to endothelial dysfunction. Thus, cLDL leads to reduced activating phosphorylation of endothelial NO-synthase (eNOS) at serine 1177[14,23], and to increased eNOS phosphorylation at the inhibitory site threonine 495[14]. cLDL also facilitates eNOS uncoupling[14], which in turn could contribute to increased ROS production. cLDL-induced eNOS uncoupling could be at least partially due to S-glutathionylation of eNOS[14].

cLDL is cytotoxic for human endothelial cells[15,20,26], and it induces more apoptosis than native LDL[23,26,27]. LOX-1 receptor plays a role since its downregulation using a small interfering RNA strongly attenuates cLDL-induced apoptosis in HUVEC[23]. In addition, the cLDL-induced cytotoxic effect on endothelial cells is at least partially mediated by endonuclease G, a nuclease implicated in

caspase-independent cell death *via* DNA fragmentation[27]. Moreover, cLDL induces autophagy in human coronary artery endothelial cells[28]. cLDL accelerates senescence in human endothelial progenitor cells, which may play a role in the failure to repair endothelial damage in atherosclerosis [25]. One study has shown that cLDL induces endothelial cell proliferation, leading to more cell death than native LDL, through the mitogen-activated protein kinase MAPK ERK1/2 pathway[29].

Although vascular smooth muscle cells (VSMC) play a complex role in atherosclerosis, VSMC and VSMC-derived cells are recognized to be a major source of plaque cells and extracellular matrix at all stages of atherosclerosis. It has been well demonstrated that cLDL induces a marked proliferation of VSMC[3,26,30]. However, cLDL has no cytotoxic effects on VSMC or on extracellular matrix protein synthesis by VSMC[30]. In addition, cLDL enhances migration of VSMC by the increasing the expression of LR11, a member of the LDL receptor family highly expressed in VSMC of the intima[31]. Lastly, cLDL increases VCAM-1 and ICAM-1 expression on VSMC[30], which could facilitate immune cell recruitment in the arterial wall.

Thrombus formation on disrupted atherosclerotic plaques or arterial erosions promotes the development of atherosclerotic lesions and frequently causes acute coronary syndrome. It has been elegantly shown that human cLDL administered to mice accelerates arterial thrombus formation compared to native LDL[24]. The underlying mechanisms could be a higher activity of tissue factor and plasminogen activator inhibitor type 1 through a LOX-1-dependent mechanism[24]. Moreover, cLDL enhances platelet aggregation *in vitro*[24].

Lastly, it has been suggested that cLDL may be involved in the pathogenesis of T2D by facilitating insulin resistance. Indeed, cLDL attenuates glucose uptake and decreases glucose transporter type 4 membrane expression *via* NO mediated tyrosine nitration of insulin receptor substrate-1 in rat muscle cells[32].

CARBAMYLATED HDL

HDL is a heterogeneous lipoprotein in terms of its size, density and lipid and protein composition. ApoA-I is the major functional and structural protein. HDL is well known to protect against atherosclerosis by its preponderant role in the removal of excess cholesterol from the vascular wall. In addition, HDL also exhibits anti-inflammatory, anti-oxidative, anti-thrombotic and endothelium protection properties.

HDL undergoes modifications at sites of inflammation and within atherosclerotic lesions, disrupting their antiatherogenic effects (reviewed in[33]). HDL is prone to be carbamylated within the subendothelial space[34,35], and apoA-I isolated from human atherosclerotic lesions is largely more carbamylated than total proteins in plasma[36]. In addition, HDL isolated from human atherosclerotic lesions of the abdominal aorta has been demonstrated to be largely more carbamylated than in plasma [34,35]. The relative contribution of the enzymatic (thiocyanate/MPO system) and the non-enzymatic (cyanate) pathways in HDL carbamylation is a matter of debate. It has been shown that MPO is associated with HDL within human atheroma[37], and that apoA-I is a selective target for MPO within atherosclerotic lesions[37]. MPO induces the carbamylation of lipid-poor apoA-I[36], a fact that is particularly relevant because the majority of apoA-I within aortic tissue is in lipid-free and lipid-poor forms [38]. It has been observed that MPO-induced modifications of HDL, such as the formation of 3-chlorotyrosine (a specific fingerprint of MPO oxidation), is particularly elevated in human atherosclerotic intima[39]. In addition, the 3-chlorotyrosine content of HDL correlates significantly with the CML content[35]. In addition, the CML content of HDL from T2D patients correlates with MPO concentration [40]. All these data taken together suggest that the carbamylation of HDL is largely mediated by MPO.

It has been observed that T2D patients (with or without CKD) have higher levels of cHDL than healthy individuals[12,40]. Moreover, cHDL levels are higher in T2D patients with coronary artery disease than in those without coronary artery disease[40]. Very interestingly, a recent prospective study has shown that cHDL serum level in T2D patients is independently associated with all-cause and cardiovascular-related mortality after a median follow-up of 14 years[41]. Furthermore, cHDL level seems to be associated with renal outcomes in T2D, since it has been recently shown to predict CKD progression in T2D patients[12]. This observation could be in line with previous data suggesting that alterations of HDL metabolism may be associated with renal outcomes in T2D, since HDL-cholesterol level is an independent risk factor for the development of kidney microvascular disease[42].

In T1D, data on cHDL levels are more scarce, although it has been demonstrated that plasma MPO activity is increased compared to non-diabetic individuals[4-6]. Our group recently showed that a standard intervention to improve glycemic control in T1D patients decreased cHDL levels[43]. That was independently associated with an improved cholesterol efflux capacity[43], which is now well recognized as a predictor of cardiovascular events.

One of the well-known properties of HDL is its ability to promote cholesterol efflux from lipid-laden macrophages using the transporters ATP-binding cassette transporter A1 (ABCA1), ATP-binding cassette transporter G1 and SR-BI, and as a carrier for its excretion. Over the past few years, research has demonstrated that the ability of HDL to promote cholesterol efflux is more strongly inversely associated

with incident cardiovascular events than circulating HDL cholesterol level[44,45]. Several findings suggest that carbamylation of HDL alters its atheroprotective properties (Figure 3). Our group and others have shown that carbamylation of HDL[35,43] or apoA-I[46] alters its ability to promote cholesterol efflux in human macrophages. Carbamylation reduces the ability of HDL to promote SR-BI-dependent cholesterol efflux in macrophages, but the carbamylation of apoA-I has no effect on ABCA1-mediated cholesterol uptake[35]. This result could be due to a change in the affinity of cHDL for SR-BI in macrophages[35]. Lecithin-cholesterol acyltransferase (LCAT), which is involved in the maturation of spherical HDL and in the initial step of reverse cholesterol transport, is less active in cHDL[34].

In addition, cHDL has altered protective effects on endothelium. Endothelial repair plays a crucial role in the prevention of vascular disease by maintaining the integrity of the endothelium. The ability of cHDL to stimulate migration, angiogenesis and proliferation is reduced in human aortic endothelial cells compared to native HDL[47]. cHDL decreases vascular endothelial growth factor receptor-2 and SR-BI levels, and subsequently affects the PI3K/Akt downstream pathway in human aortic endothelial cells, all of which being involved in endothelial repair[47]. This downregulation of the capacity for endothelial repair induced by cHDL is likely to contribute to endothelial dysfunction in diabetes. Paraoxonase-1 (PON-1) activity was found to be inversely correlated with cHDL level in end-stage renal disease[47]. cHDL loses its antiapoptotic activity on human coronary artery endothelial cells[3].

HDL particles have also anti-inflammatory functions. Very recently, an inverse association between the anti-inflammatory capacity of HDL and incident cardiovascular events has been established in a general population cohort, independently of both HDL cholesterol level and cholesterol efflux capacity[48]. Many studies suggest that the anti-inflammatory properties of HDL are altered by its carbamylation. Thus, cHDL promotes the adhesion of monocytes to HUVEC in a dose-dependent manner[40]. The carbamylation of HDL or of recombinant HDL reduces its ability to inhibit the tumor necrosis factor α -induced expression of VCAM-1, ICAM-1 and E-selectin in human coronary endothelial cells[40, 46]. The mechanism implies an upregulation of the nuclear factor-kappaB/p65 pathway[40], which plays an important role in the regulation of adhesion molecules.

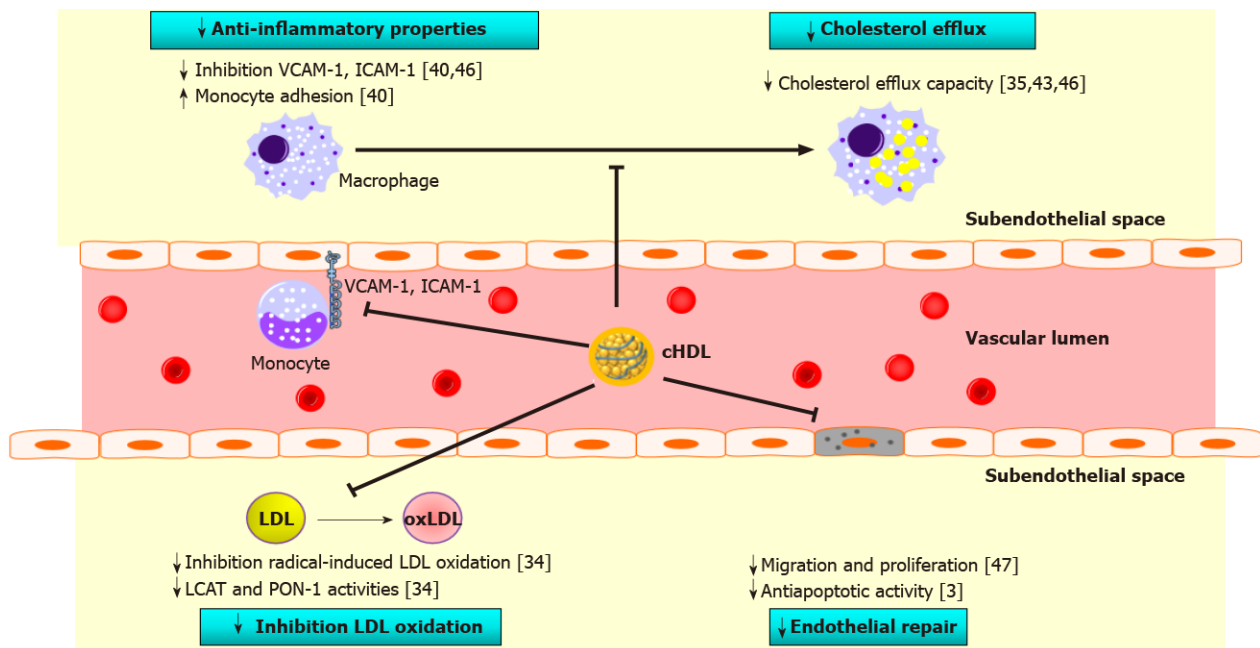
Under physiological conditions, HDL is able to activate eNOS and therefore to stimulate NO production by the endothelium. This contributes to some beneficial effects of HDL such as vasorelaxation or the inhibition of different factors that promote atherosclerosis progression[49]. We and others have found that HDL is less efficient at inducing NO production in endothelial cells in patients with T2D[50] or metabolic syndrome[51]. We showed that sphingosine-1-phosphate depletion of HDL is the main factor responsible for this defect in metabolic syndrome[51]. To our knowledge, no direct evidence to date demonstrates that cHDL is less efficient at inducing NO production. However, HDL modified by HOCl, another MPO product besides cyanate, was less efficient at activating eNOS, with associated changes in eNOS intracellular distribution[52]. MPO/HOCl induces the formation in HDL of 2-chlorohexadecanal from HDL-associated plasmalogens, and this lipid has been shown to inactivate eNOS[52]. Interestingly, we have reported that HDL was depleted in plasmalogens from patients with T1D[53], T2D[54] and metabolic syndrome but without diabetes[55], and that could be an indirect marker of MPO/HOCl action on HDL particles.

HDL contributes to protecting LDL from oxidation. Plasmalogens and the HDL-associated proteins LCAT and PON-1 are involved in the anti-oxidant properties of HDL. The carbamylation of HDL reduces its ability to inhibit radical-induced LDL oxidation[34]. The carbamylation of LCAT and PON-1 could explain this alteration, since it has been shown that PON-1 is prone to carbamylation[56], and above all that the activity of both LCAT and PON-1 is decreased in cHDL[34].

CONCLUSION

We have summarized here the main data on lipoprotein carbamylation in diabetes and on its potential role in the development of atherosclerosis. There is now accumulating evidence suggesting that cLDL plays a role in atherosclerosis, as oxLDL has been known for a long time. For example, it has been demonstrated that cLDL promotes foam cell formation, immune cell recruitment in the vascular wall, eNOS inactivation and uncoupling and endothelial repair defects. HDL, on the other hand, has altered atheroprotective properties after carbamylation. cHDL loses the ability to remove cholesterol from macrophages, to inhibit monocyte adhesion and recruitment, to induce eNOS activation and also to inhibit apoptosis. Taken together, this means it is very likely that these abnormalities in the biological functions of LDL and HDL after carbamylation contribute to atherosclerosis and to the increased cardiovascular risk in diabetes.

Minimizing the carbamylation of lipoproteins therefore appears to be a relevant approach in the management of diabetes to reduce cardiovascular risk. Above all else, smoking (a well-known source of cyanate) cessation is obviously a significant action to reduce lipoprotein carbamylation, and in general to decrease cardiovascular risk. Moreover, we must keep in mind that more than 40% of people with diabetes are likely to develop CKD[57]. Therefore, the prevention of CKD and subsequent elevated uremia through the usual care is also a way to prevent lipoprotein carbamylation in diabetic patients. Our group recently showed that conventional treatment to improve glycemic control in uncontrolled



DOI: 10.4239/wjd.v14.i3.159 Copyright ©The Author(s) 2023.

Figure 3 Role of carbamylated high-density lipoproteins in atherosclerosis. The atheroprotective properties of high-density lipoproteins (HDL) are altered after carbamylation. Thus, carbamylation HDL (cHDL) partially loses its ability to remove cholesterol from macrophages and to inhibit monocyte adhesion. cHDL is less able to protect low-density lipoproteins from oxidation, likely due to reduced lecithin-cholesterol acyltransferase and paraoxonase-1 activities. Lastly, cHDL has an impaired capacity to facilitate endothelial repair. VCAM-1: Vascular cell adhesion molecule-1; ICAM-1: Intercellular adhesion molecule-1; PAI-1: Plasminogen activator inhibitor type 1; LDL: Low-density lipoproteins; LCAT: Lecithin-cholesterol acyltransferase; PON-1: Paraoxonase-1; cHDL: Carbamylation high-density lipoproteins.

T1D patients is accompanied by a decrease in cHDL, despite the lack of a clear mechanistic explanation [43].

The inhibition of MPO could also be a promising strategy to inhibit the formation of carbamylated lipoproteins[58,59]. However, it should be kept in mind that MPO plays a role in innate immunity, and such an approach must be thoroughly evaluated regarding infection risk. The nuclear receptor peroxisome proliferator-activated receptor (PPAR)-gamma regulates MPO expression in macrophages [60]. Interestingly, it has been demonstrated that the PPAR-gamma agonist rosiglitazone decreases MPO expression and activity in neutrophils from hypercholesterolemic rabbits[61], and that it lowers plasma cLDL and MPO levels in T2D patients with normal renal function[7]. Infusion of apoA-I or recombinant HDL resistant to carbamylation could be an interesting strategy in diabetic patients with cardiovascular events. This could theoretically be made by substituting relevant MPO/cyanate-targeted lysine residues of apoA-I, by analogy with what was done with the apoA-I variant 4WF, which is made resistant to MPO-induced oxidation by replacing four tryptophan residues with phenylalanine[62,63]. Another innovative strategy is the local delivery of adeno-associated viral vectors expressing *apoA1* variants using endovascular stenting[64]. Finally, antioxidants could counteract the increased ROS production and MPO-mediated oxidation of lipoproteins in diabetes. Ascorbic acid (vitamin C), α -tocopherol (vitamin E) and above all lycopene have been shown to inhibit LDL carbamylation *in vitro*[65].

In addition, it has been hypothesized that ornithine may be able to compete with ϵ -amino groups of lysine residues found in apolipoproteins in their binding to isocyanate, leading to a decrease in cLDL formation[66]. Finally, it has been shown that flavonoids are able to inhibit LDL carbamylation (probably by scavenging cyanate ions)[67].

To conclude, increasing the knowledge of lipoprotein abnormalities in diabetes is important to better understand the pathophysiology of diabetic dyslipidemia, and to develop new therapeutic strategies to reduce cardiovascular risk. As far as carbamylation is concerned, recent studies suggest that carbamylated lipoproteins likely play a causative role in atherosclerosis, beyond simply being a biomarker of cardiovascular risk in patients with diabetes.

FOOTNOTES

Author contributions: Denimal D contributed to conception and design of the work, performed the research of the literature, drafted the manuscript and prepared the figures.

Conflict-of-interest statement: The author reports no relevant conflicts of interest for this review.

Open-Access: This article is an open-access article that was selected by an in-house editor and fully peer-reviewed by external reviewers. It is distributed in accordance with the Creative Commons Attribution NonCommercial (CC BY-NC 4.0) license, which permits others to distribute, remix, adapt, build upon this work non-commercially, and license their derivative works on different terms, provided the original work is properly cited and the use is non-commercial. See: <https://creativecommons.org/licenses/by-nc/4.0/>

Country/Territory of origin: France

ORCID number: Damien Denimal 0000-0001-5454-954X.

S-Editor: Wang JJ

L-Editor: A

P-Editor: Wang JJ

REFERENCES

- 1 Vergès B. Dyslipidemia in Type 1 Diabetes: AMaskedDanger. *Trends Endocrinol Metab* 2020; **31**: 422-434 [PMID: 32217073 DOI: 10.1016/j.tem.2020.01.015]
- 2 Vergès B. Pathophysiology of diabetic dyslipidaemia: where are we? *Diabetologia* 2015; **58**: 886-899 [PMID: 25725623 DOI: 10.1007/s00125-015-3525-8]
- 3 Wang Z, Nicholls SJ, Rodriguez ER, Kumm O, Hörkö S, Barnard J, Reynolds WF, Topol EJ, DiDonato JA, Hazen SL. Protein carbamylation links inflammation, smoking, uremia and atherogenesis. *Nat Med* 2007; **13**: 1176-1184 [PMID: 17828273 DOI: 10.1038/nm1637]
- 4 Savu O, Serafinceanu C, Grajdeanu IV, Iosif L, Gaman L, Stoian I. Paraoxonase lactonase activity, inflammation and antioxidant status in plasma of patients with type 1 diabetes mellitus. *J Int Med Res* 2014; **42**: 523-529 [PMID: 24567352 DOI: 10.1177/0300060513516287]
- 5 Heilman K, Zilmer M, Zilmer K, Lintrop M, Kampus P, Kals J, Tillmann V. Arterial stiffness, carotid artery intima-media thickness and plasma myeloperoxidase level in children with type 1 diabetes. *Diabetes Res Clin Pract* 2009; **84**: 168-173 [PMID: 19237222 DOI: 10.1016/j.diabres.2009.01.014]
- 6 Iannantuoni F, M de Maraño A, Abad-Jiménez Z, Canet F, Díaz-Pozo P, López-Domènech S, Morillas C, Rocha M, Victor VM. Mitochondrial Alterations and Enhanced Human Leukocyte/Endothelial Cell Interactions in Type 1 Diabetes. *J Clin Med* 2020; **9** [PMID: 32650465 DOI: 10.3390/jcm9072155]
- 7 Shiu SW, Xiao SM, Wong Y, Chow WS, Lam KS, Tan KC. Carbamylation of LDL and its relationship with myeloperoxidase in type 2 diabetes mellitus. *Clin Sci (Lond)* 2014; **126**: 175-181 [PMID: 23905837 DOI: 10.1042/CS20130369]
- 8 Wiersma JJ, Meuwese MC, van Miert JN, Kastelein A, Tijssen JG, Piek JJ, Trip MD. Diabetes mellitus type 2 is associated with higher levels of myeloperoxidase. *Med Sci Monit* 2008; **14**: CR406-10 [PMID: 18667997]
- 9 Zhang R, Brennan ML, Fu X, Aviles RJ, Pearce GL, Penn MS, Topol EJ, Sprecher DL, Hazen SL. Association between myeloperoxidase levels and risk of coronary artery disease. *JAMA* 2001; **286**: 2136-2142 [PMID: 11694155 DOI: 10.1001/jama.286.17.2136]
- 10 Meuwese MC, Stoes ES, Hazen SL, van Miert JN, Kuivenhoven JA, Schaub RG, Wareham NJ, Luben R, Kastelein JJ, Khaw KT, Boekholdt SM. Serum myeloperoxidase levels are associated with the future risk of coronary artery disease in apparently healthy individuals: the EPIC-Norfolk Prospective Population Study. *J Am Coll Cardiol* 2007; **50**: 159-165 [PMID: 17616301 DOI: 10.1016/j.jacc.2007.03.033]
- 11 Baldus S, Heeschen C, Meinertz T, Zehner AM, Eiserich JP, Münzel T, Simoons ML, Hamm CW; CAPTURE Investigators. Myeloperoxidase serum levels predict risk in patients with acute coronary syndromes. *Circulation* 2003; **108**: 1440-1445 [PMID: 12952835 DOI: 10.1161/01.CIR.0000090690.67322.51]
- 12 Tan KCB, Cheung CL, Lee ACH, Lam JKY, Wong Y, Shiu SWM. Carbamylated Lipoproteins and Progression of Diabetic Kidney Disease. *Clin J Am Soc Nephrol* 2020; **15**: 359-366 [PMID: 32075807 DOI: 10.2215/CJN.11710919]
- 13 Stankova TR, Delcheva GT, Maneva AI, Vladeva SV. Serum Levels of Carbamylated LDL, Nitrotyrosine and Soluble Lectin-like Oxidized Low-density Lipoprotein Receptor-1 in Poorly Controlled Type 2 Diabetes Mellitus. *Folia Med (Plovdiv)* 2019; **61**: 419-425 [PMID: 32337929 DOI: 10.3897/folmed.61.e39343]
- 14 Speer T, Owala FO, Holy EW, Zewinger S, Frenzel FL, Stähli BE, Razavi M, Triem S, Cvija H, Rohrer L, Seiler S, Heine GH, Jankowski V, Jankowski J, Camici GG, Akhmedov A, Fliser D, Lüscher TF, Tanner FC. Carbamylated low-density lipoprotein induces endothelial dysfunction. *Eur Heart J* 2014; **35**: 3021-3032 [PMID: 24658767 DOI: 10.1093/eurheartj/ehu111]
- 15 Apostolov EO, Shah SV, Ray D, Basnakian AG. Scavenger receptors of endothelial cells mediate the uptake and cellular proatherogenic effects of carbamylated LDL. *Arterioscler Thromb Vasc Biol* 2009; **29**: 1622-1630 [PMID: 19696406 DOI: 10.1161/ATVBAHA.109.189795]
- 16 Apostolov EO, Ray D, Savenka AV, Shah SV, Basnakian AG. Chronic uremia stimulates LDL carbamylation and atherosclerosis. *J Am Soc Nephrol* 2010; **21**: 1852-1857 [PMID: 20947625 DOI: 10.1681/ASN.2010040365]
- 17 Hörkö S, Huttunen K, Kervinen K, Kesäniemi YA. Decreased clearance of uraemic and mildly carbamylated low-density lipoprotein. *Eur J Clin Invest* 1994; **24**: 105-113 [PMID: 8206079 DOI: 10.1111/j.1365-2362.1994.tb00974.x]
- 18 Hörkö S, Savolainen MJ, Kervinen K, Kesäniemi YA. Carbamylation-induced alterations in low-density lipoprotein metabolism. *Kidney Int* 1992; **41**: 1175-1181 [PMID: 1319520 DOI: 10.1038/ki.1992.179]

- 19 **Alquraini A**, El Khoury J. Scavenger receptors. *Curr Biol* 2020; **30**: R790-R795 [PMID: [32693066](#) DOI: [10.1016/j.cub.2020.05.051](#)]
- 20 **Apostolov EO**, Ok E, Burns S, Nawaz S, Savenka A, Shah S, Basnakian AG. Carbamylated-oxidized LDL: proatherosclerotic effects on endothelial cells and macrophages. *J Atheroscler Thromb* 2013; **20**: 878-892 [PMID: [24067603](#) DOI: [10.5551/jat.14035](#)]
- 21 **Gonen B**, Cole T, Hahm KS. The interaction of carbamylated low-density lipoprotein with cultured cells. Studies with human fibroblasts, rat peritoneal macrophages and human monocyte-derived macrophages. *Biochim Biophys Acta* 1983; **754**: 201-207 [PMID: [6317041](#) DOI: [10.1016/0005-2760\(83\)90162-5](#)]
- 22 **Apostolov EO**, Shah SV, Ok E, Basnakian AG. Carbamylated low-density lipoprotein induces monocyte adhesion to endothelial cells through intercellular adhesion molecule-1 and vascular cell adhesion molecule-1. *Arterioscler Thromb Vasc Biol* 2007; **27**: 826-832 [PMID: [17255534](#) DOI: [10.1161/01.ATV.0000258795.75121.8a](#)]
- 23 **Son JN**, Lho Y, Shin S, Kwon SH, Moon KC, Ha E. Carbamylated low-density lipoprotein increases reactive oxygen species (ROS) and apoptosis via lectin-like oxidized LDL receptor (LOX-1) mediated pathway in human umbilical vein endothelial cells. *Int J Cardiol* 2011; **146**: 428-430 [PMID: [21094547](#) DOI: [10.1016/j.ijcard.2010.10.098](#)]
- 24 **Holy EW**, Akhmedov A, Speer T, Camici GG, Zewinger S, Bonetti N, Beer JH, Lüscher TF, Tanner FC. Carbamylated Low-Density Lipoproteins Induce a Prothrombotic State Via LOX-1: Impact on Arterial Thrombus Formation In Vivo. *J Am Coll Cardiol* 2016; **68**: 1664-1676 [PMID: [27712780](#) DOI: [10.1016/j.jacc.2016.07.755](#)]
- 25 **Carracedo J**, Merino A, Briceño C, Soriano S, Buendía P, Calleros L, Rodriguez M, Martín-Malo A, Aljama P, Ramírez R. Carbamylated low-density lipoprotein induces oxidative stress and accelerated senescence in human endothelial progenitor cells. *FASEB J* 2011; **25**: 1314-1322 [PMID: [21228221](#) DOI: [10.1096/fj.10-173377](#)]
- 26 **Ok E**, Basnakian AG, Apostolov EO, Barri YM, Shah SV. Carbamylated low-density lipoprotein induces death of endothelial cells: a link to atherosclerosis in patients with kidney disease. *Kidney Int* 2005; **68**: 173-178 [PMID: [15954906](#) DOI: [10.1111/j.1523-1755.2005.00391.x](#)]
- 27 **Apostolov EO**, Ray D, Alobuia WM, Mikhailova MV, Wang X, Basnakian AG, Shah SV. Endonuclease G mediates endothelial cell death induced by carbamylated LDL. *Am J Physiol Heart Circ Physiol* 2011; **300**: H1997-H2004 [PMID: [21460199](#) DOI: [10.1152/ajpheart.01311.2010](#)]
- 28 **Bose C**, Shah SV, Karaduta OK, Kaushal GP. Carbamylated Low-Density Lipoprotein (cLDL)-Mediated Induction of Autophagy and Its Role in Endothelial Cell Injury. *PLoS One* 2016; **11**: e0165576 [PMID: [27973558](#) DOI: [10.1371/journal.pone.0165576](#)]
- 29 **Apostolov EO**, Basnakian AG, Yin X, Ok E, Shah SV. Modified LDLs induce proliferation-mediated death of human vascular endothelial cells through MAPK pathway. *Am J Physiol Heart Circ Physiol* 2007; **292**: H1836-H1846 [PMID: [17158646](#) DOI: [10.1152/ajpheart.01079.2006](#)]
- 30 **Asci G**, Basci A, Shah SV, Basnakian A, Toz H, Ozkahya M, Duman S, Ok E. Carbamylated low-density lipoprotein induces proliferation and increases adhesion molecule expression of human coronary artery smooth muscle cells. *Nephrology (Carlton)* 2008; **13**: 480-486 [PMID: [18518940](#) DOI: [10.1111/j.1440-1797.2008.00948.x](#)]
- 31 **Bajari TM**, Winnicki W, Gensberger ET, Scharrer SI, Regele H, Aumayr K, Kopecky C, Gmeiner BM, Hermann M, Zeillinger R, Sengölge G. Known players, new interplay in atherogenesis: Chronic shear stress and carbamylated-LDL induce and modulate expression of atherogenic LR11 in human coronary artery endothelium. *Thromb Haemost* 2014; **111**: 323-332 [PMID: [24284991](#) DOI: [10.1160/TH12-12-0924](#)]
- 32 **Choi HJ**, Lee KJ, Hwang EA, Mun KC, Ha E. Carbamylated low-density lipoprotein attenuates glucose uptake via a nitric oxide-mediated pathway in rat L6 skeletal muscle cells. *Mol Med Rep* 2015; **12**: 1342-1346 [PMID: [25779204](#) DOI: [10.3892/mmr.2015.3481](#)]
- 33 **Rosenson RS**, Brewer HB Jr, Ansell BJ, Barter P, Chapman MJ, Heinecke JW, Kontush A, Tall AR, Webb NR. Dysfunctional HDL and atherosclerotic cardiovascular disease. *Nat Rev Cardiol* 2016; **13**: 48-60 [PMID: [26323267](#) DOI: [10.1038/nrcardio.2015.124](#)]
- 34 **Holzer M**, Zangger K, El-Gamal D, Binder V, Curcic S, Konya V, Schuligoi R, Heinemann A, Marsche G. Myeloperoxidase-derived chlorinating species induce protein carbamylation through decomposition of thiocyanate and urea: novel pathways generating dysfunctional high-density lipoprotein. *Antioxid Redox Signal* 2012; **17**: 1043-1052 [PMID: [22462773](#) DOI: [10.1089/ars.2011.4403](#)]
- 35 **Holzer M**, Gauster M, Pfeifer T, Wadsack C, Fauler G, Stiegler P, Koefeler H, Beubler E, Schuligoi R, Heinemann A, Marsche G. Protein carbamylation renders high-density lipoprotein dysfunctional. *Antioxid Redox Signal* 2011; **14**: 2337-2346 [PMID: [21235354](#) DOI: [10.1089/ars.2010.3640](#)]
- 36 **Battle S**, Gogonea V, Willard B, Wang Z, Fu X, Huang Y, Graham LM, Cameron SJ, DiDonato JA, Crabb JW, Hazen SL. The pattern of apolipoprotein A-I lysine carbamylation reflects its lipidation state and the chemical environment within human atherosclerotic aorta. *J Biol Chem* 2022; **298**: 101832 [PMID: [35304099](#) DOI: [10.1016/j.jbc.2022.101832](#)]
- 37 **Zheng L**, Nukuna B, Brennan ML, Sun M, Goormastic M, Settle M, Schmitt D, Fu X, Thomson L, Fox PL, Ischiropoulos H, Smith JD, Kinter M, Hazen SL. Apolipoprotein A-I is a selective target for myeloperoxidase-catalyzed oxidation and functional impairment in subjects with cardiovascular disease. *J Clin Invest* 2004; **114**: 529-541 [PMID: [15314690](#) DOI: [10.1172/JCI21109](#)]
- 38 **DiDonato JA**, Huang Y, Aulak KS, Even-Or O, Gerstenecker G, Gogonea V, Wu Y, Fox PL, Tang WH, Plow EF, Smith JD, Fisher EA, Hazen SL. Function and distribution of apolipoprotein A1 in the artery wall are markedly distinct from those in plasma. *Circulation* 2013; **128**: 1644-1655 [PMID: [23969698](#) DOI: [10.1161/CIRCULATIONAHA.113.002624](#)]
- 39 **Bergt C**, Pennathur S, Fu X, Byun J, O'Brien K, McDonald TO, Singh P, Anantharamaiah GM, Chait A, Brunzell J, Geary RL, Oram JF, Heinecke JW. The myeloperoxidase product hypochlorous acid oxidizes HDL in the human artery wall and impairs ABCA1-dependent cholesterol transport. *Proc Natl Acad Sci U S A* 2004; **101**: 13032-13037 [PMID: [15326314](#) DOI: [10.1073/pnas.0405292101](#)]
- 40 **Chen Z**, Ding S, Wang YP, Chen L, Mao JY, Yang Y, Sun JT, Yang K. Association of carbamylated high-density lipoprotein with coronary artery disease in type 2 diabetes mellitus: carbamylated high-density lipoprotein of patients promotes monocyte adhesion. *J Transl Med* 2020; **18**: 460 [PMID: [33272295](#) DOI: [10.1186/s12967-020-02623-2](#)]

- 41 **Lui DTW**, Cheung CL, Lee ACH, Wong Y, Shiu SWM, Tan KCB. Carbamylated HDL and Mortality Outcomes in Type 2 Diabetes. *Diabetes Care* 2021; **44**: 804-809 [PMID: [33402368](#) DOI: [10.2337/dc20-2186](#)]
- 42 **Morton J**, Zoungas S, Li Q, Patel AA, Chalmers J, Woodward M, Celermajer DS, Beulens JW, Stolk RP, Glasziou P, Ng MK; ADVANCE Collaborative Group. Low HDL cholesterol and the risk of diabetic nephropathy and retinopathy: results of the ADVANCE study. *Diabetes Care* 2012; **35**: 2201-2206 [PMID: [22891258](#) DOI: [10.2337/dc12-0306](#)]
- 43 **Denimal D**, Monier S, Simoneau I, Duvillard L, Vergès B, Bouillet B. HDL functionality in type 1 diabetes: enhancement of cholesterol efflux capacity in relationship with decreased HDL carbamylation after improvement of glycemic control. *Cardiovasc Diabetol* 2022; **21**: 154 [PMID: [35962339](#) DOI: [10.1186/s12933-022-01591-9](#)]
- 44 **Rohatgi A**, Khera A, Berry JD, Givens EG, Ayers CR, Wedin KE, Neeland IJ, Yuhanna IS, Rader DR, de Lemos JA, Shaul PW. HDL cholesterol efflux capacity and incident cardiovascular events. *N Engl J Med* 2014; **371**: 2383-2393 [PMID: [25404125](#) DOI: [10.1056/NEJMoa1409065](#)]
- 45 **Ebtehaj S**, Gruppen EG, Bakker SJL, Dullaart RPF, Tietge UJF. HDL (High-Density Lipoprotein) Cholesterol Efflux Capacity Is Associated With Incident Cardiovascular Disease in the General Population. *Arterioscler Thromb Vasc Biol* 2019; **39**: 1874-1883 [PMID: [31315436](#) DOI: [10.1161/ATVBAHA.119.312645](#)]
- 46 **Hadfield KA**, Pattison DI, Brown BE, Hou L, Rye KA, Davies MJ, Hawkins CL. Myeloperoxidase-derived oxidants modify apolipoprotein A-I and generate dysfunctional high-density lipoproteins: comparison of hypothiocyanous acid (HOSCN) with hypochlorous acid (HOCl). *Biochem J* 2013; **449**: 531-542 [PMID: [23088652](#) DOI: [10.1042/BJ20121210](#)]
- 47 **Sun JT**, Yang K, Lu L, Zhu ZB, Zhu JZ, Ni JW, Han H, Chen N, Zhang RY. Increased carbamylation level of HDL in end-stage renal disease: carbamylated-HDL attenuated endothelial cell function. *Am J Physiol Renal Physiol* 2016; **310**: F511-F517 [PMID: [26764205](#) DOI: [10.1152/ajprenal.00508.2015](#)]
- 48 **Jia C**, Anderson JLC, Gruppen EG, Lei Y, Bakker SJL, Dullaart RPF, Tietge UJF. High-Density Lipoprotein Anti-Inflammatory Capacity and Incident Cardiovascular Events. *Circulation* 2021; **143**: 1935-1945 [PMID: [33840204](#) DOI: [10.1161/CIRCULATIONAHA.120.050808](#)]
- 49 **Iwakiri Y**. S-nitrosylation of proteins: a new insight into endothelial cell function regulated by eNOS-derived NO. *Nitric Oxide* 2011; **25**: 95-101 [PMID: [21554971](#) DOI: [10.1016/j.niox.2011.04.014](#)]
- 50 **Sorrentino SA**, Besler C, Rohrer L, Meyer M, Heinrich K, Bahlmann FH, Mueller M, Horváth T, Doerries C, Heinemann M, Flemmer S, Markowski A, Manes C, Bahr MJ, Haller H, von Eckardstein A, Drexler H, Landmesser U. Endothelial-vasoprotective effects of high-density lipoprotein are impaired in patients with type 2 diabetes mellitus but are improved after extended-release niacin therapy. *Circulation* 2010; **121**: 110-122 [PMID: [20026785](#) DOI: [10.1161/CIRCULATIONAHA.108.836346](#)]
- 51 **Denimal D**, Monier S, Brindisi MC, Petit JM, Bouillet B, Nguyen A, Demizieux L, Simoneau I, Pais de Barros JP, Vergès B, Duvillard L. Impairment of the Ability of HDL From Patients With Metabolic Syndrome but Without Diabetes Mellitus to Activate eNOS: Correction by S1P Enrichment. *Arterioscler Thromb Vasc Biol* 2017; **37**: 804-811 [PMID: [28360087](#) DOI: [10.1161/ATVBAHA.117.309287](#)]
- 52 **Marsche G**, Heller R, Fauler G, Kovacevic A, Nuszowski A, Graier W, Sattler W, Malle E. 2-chlorohexadecanal derived from hypochlorite-modified high-density lipoprotein-associated plasmalogen is a natural inhibitor of endothelial nitric oxide biosynthesis. *Arterioscler Thromb Vasc Biol* 2004; **24**: 2302-2306 [PMID: [15514213](#) DOI: [10.1161/01.ATV.0000148703.43429.25](#)]
- 53 **Denimal D**, Pais de Barros JP, Petit JM, Bouillet B, Vergès B, Duvillard L. Significant abnormalities of the HDL phosphosphingolipidome in type 1 diabetes despite normal HDL cholesterol concentration. *Atherosclerosis* 2015; **241**: 752-760 [PMID: [26142685](#) DOI: [10.1016/j.atherosclerosis.2015.06.040](#)]
- 54 **Denimal D**, Benanaya S, Monier S, Simoneau I, Pais de Barros JP, Le Goff W, Bouillet B, Vergès B, Duvillard L. Normal HDL Cholesterol Efflux and Anti-Inflammatory Capacities in Type 2 Diabetes Despite Lipidomic Abnormalities. *J Clin Endocrinol Metab* 2022; **107**: e3816-e3823 [PMID: [35647758](#) DOI: [10.1210/clinem/dgac339](#)]
- 55 **Denimal D**, Nguyen A, Pais de Barros JP, Bouillet B, Petit JM, Vergès B, Duvillard L. Major changes in the sphingophospholipidome of HDL in non-diabetic patients with metabolic syndrome. *Atherosclerosis* 2016; **246**: 106-114 [PMID: [26773402](#) DOI: [10.1016/j.atherosclerosis.2015.12.042](#)]
- 56 **Chang CT**, Lim YP, Lee CW, Liao HY, Chen FY, Chang CM, Tang FY, Yang CY, Chen CJ. PON-1 carbamylation is enhanced in HDL of uremia patients. *J Food Drug Anal* 2019; **27**: 542-550 [PMID: [30987726](#) DOI: [10.1016/j.jfda.2018.09.007](#)]
- 57 **Kidney Disease: Improving Global Outcomes (KDIGO) Diabetes Work Group**. KDIGO 2020 Clinical Practice Guideline for Diabetes Management in Chronic Kidney Disease. *Kidney Int* 2020; **98**: S1-S115 [PMID: [32998798](#) DOI: [10.1016/j.kint.2020.06.019](#)]
- 58 **Malle E**, Furtmüller PG, Sattler W, Obinger C. Myeloperoxidase: a target for new drug development? *Br J Pharmacol* 2007; **152**: 838-854 [PMID: [17592500](#) DOI: [10.1038/sj.bjp.0707358](#)]
- 59 **Chen S**, Chen H, Du Q, Shen J. Targeting Myeloperoxidase (MPO) Mediated Oxidative Stress and Inflammation for Reducing Brain Ischemia Injury: Potential Application of Natural Compounds. *Front Physiol* 2020; **11**: 433 [PMID: [32508671](#) DOI: [10.3389/fphys.2020.00433](#)]
- 60 **Kumar AP**, Piedrafitra FJ, Reynolds WF. Peroxisome proliferator-activated receptor gamma ligands regulate myeloperoxidase expression in macrophages by an estrogen-dependent mechanism involving the -463GA promoter polymorphism. *J Biol Chem* 2004; **279**: 8300-8315 [PMID: [14668325](#) DOI: [10.1074/jbc.M311625200](#)]
- 61 **Liu HR**, Tao L, Gao E, Qu Y, Lau WB, Lopez BL, Christopher TA, Koch W, Yue TL, Ma XL. Rosiglitazone inhibits hypercholesterolemia-induced myeloperoxidase upregulation--a novel mechanism for the cardioprotective effects of PPAR agonists. *Cardiovasc Res* 2009; **81**: 344-352 [PMID: [19010810](#) DOI: [10.1093/cvr/cvn308](#)]
- 62 **Peng DQ**, Brubaker G, Wu Z, Zheng L, Willard B, Kinter M, Hazen SL, Smith JD. Apolipoprotein A-I tryptophan substitution leads to resistance to myeloperoxidase-mediated loss of function. *Arterioscler Thromb Vasc Biol* 2008; **28**: 2063-2070 [PMID: [18688016](#) DOI: [10.1161/ATVBAHA.108.173815](#)]
- 63 **Berisha SZ**, Brubaker G, Kasumov T, Hung KT, DiBello PM, Huang Y, Li L, Willard B, Pollard KA, Nagy LE, Hazen SL, Smith JD. HDL from apoA1 transgenic mice expressing the 4WF isoform is resistant to oxidative loss of function. *J Lipid*

- Res* 2015; **56**: 653-664 [PMID: 25561462 DOI: 10.1194/jlr.M056754]
- 64 **Hooshdaran B**, Pressly BB, Alferiev IS, Smith JD, Zoltick PW, Tschabrunn CM, Wilensky RL, Gorman RC, Levy RJ, Fishbein I. Stent-based delivery of AAV2 vectors encoding oxidation-resistant apoA1. *Sci Rep* 2022; **12**: 5464 [PMID: 35361857 DOI: 10.1038/s41598-022-09524-y]
- 65 **Ghaffari MA**, Shanaki M. In vitro inhibition of low density lipoprotein carbamylation by vitamins, as an ameliorating atherosclerotic risk in uremic patients. *Scand J Clin Lab Invest* 2010; **70**: 122-127 [PMID: 20156036 DOI: 10.3109/00365511003624137]
- 66 **Simsek B**, Çakatay U. Could ornithine supplementation be beneficial to prevent the formation of pro-atherogenic carbamylated low-density lipoprotein (c-LDL) particles? *Med Hypotheses* 2019; **126**: 20-22 [PMID: 31010493 DOI: 10.1016/j.mehy.2019.03.004]
- 67 **Ghaffari MA**, Shanaki M. Evaluation of in vitro effect of flavonoids on human low-density lipoprotein carbamylation. *Iran J Pharm Res* 2010; **9**: 67-74 [PMID: 24363709]



Published by **Baishideng Publishing Group Inc**
7041 Koll Center Parkway, Suite 160, Pleasanton, CA 94566, USA

Telephone: +1-925-3991568

E-mail: bpgoffice@wjgnet.com

Help Desk: <https://www.f6publishing.com/helpdesk>

<https://www.wjgnet.com>

