

Focal autoimmune pancreatitis and chronic sclerosing sialadenitis mimicking pancreatic cancer and neck metastasis

Li Sun, Qiang Zhou, David R Brigstock, Su Yan, Ming Xiu, Rong-Li Piao, Yan-Hang Gao, Run-Ping Gao

Li Sun, Qiang Zhou, Su Yan, Ming Xiu, Rong-Li Piao, Yan-Hang Gao, Run-Ping Gao, Department of Hepatic-Biliary-Pancreatic Medicine, First Hospital, Jilin University, Changchun 130021, Jilin Province, China

David R Brigstock, Research Institute at Nationwide Children's Hospital, Columbus, OH 43205, United States

David R Brigstock, Division of Pediatric Surgery, Department of Surgery, Ohio State University, Columbus, OH 43205, United States

Author contributions: Sun L, Zhou Q, Yan S, Xiu M, Piao RL and Gao YH performed the experiments and analyzed data; Gao RP designed the study and wrote the manuscript; Brigstock DR co-ordinated the study and edited the manuscript.

Supported by National Natural Scientific Foundation, No. 81070370, and No. 81270544 to Gao RP; and National Institutes of Health, No. 5R01AA016003 to Brigstock DR

Correspondence to: Run-Ping Gao, Professor, Department of Hepatic-Biliary-Pancreatic Medicine, First Hospital, Jilin University, 71 Xinmin Avenue, Changchun 130021, Jilin Province, China. gao_runping@yahoo.com

Telephone: +86-431-81715110 Fax: +86-431-85612468

Received: May 1, 2014

Revised: June 8, 2014

Accepted: July 11, 2014

Published online: December 14, 2014

remains healthy with no signs of recurrence at one year follow-up. The differentiation of f-AIP from PC is very important to avoid unnecessary pancreatic resection.

© 2014 Baishideng Publishing Group Inc. All rights reserved.

Key words: IgG4-related disease; IgG4-related focal type of AIP; Küttner's tumour; Autoimmune pancreatitis; Pancreatic cancer

Core tip: We report a rare case of 53-year-old male patient who suffered from IgG4-related focal type of autoimmune pancreatitis (f-AIP) accompanied with Küttner's tumour originally suspected of being pancreatic cancer with neck metastasis. The patient responded well to corticosteroid therapy but he had undergone an unnecessary pancreatic body mass resection one year ago prior to admission. Therefore, we suggest that AIP should always be considered in case of a focal pancreatic mass.

Abstract

Type 1 autoimmune pancreatitis (AIP) or chronic sclerosing sialadenitis (Küttner's tumour) is an uncommon disorder that has recently been confirmed as an IgG4-related disease. Here, we describe a rare case of a 53-year-old male patient who primarily presented with pancreatic body mass, left neck mass and several lumps in his lower lip mimicking pancreatic cancer (PC) and neck metastasis. The patient underwent pancreatic body mass and labial gland lumps resection as well as an ultrasound-guided biopsy of the left neck mass. He was diagnosed with IgG4-related focal type of AIP (f-AIP) and Küttner's tumour by immunohistochemistry. The patient responded well to corticosteroid therapy and

Sun L, Zhou Q, Brigstock DR, Yan S, Xiu M, Piao RL, Gao YH, Gao RP. Focal autoimmune pancreatitis and chronic sclerosing sialadenitis mimicking pancreatic cancer and neck metastasis. *World J Gastroenterol* 2014; 20(46): 17674-17679 Available from: URL: <http://www.wjgnet.com/1007-9327/full/v20/i46/17674.htm> DOI: <http://dx.doi.org/10.3748/wjg.v20.i46.17674>

INTRODUCTION

Autoimmune pancreatitis (AIP) is an uncommon form of chronic pancreatitis associated with an autoimmune inflammatory process^[1]. Two subtypes of AIP have been so far recognized: type 1 AIP is the pancreatic manifestation of IgG4-related disease (IgG4-RD), while type 2 AIP is related to a granulocytic epithelial lesion^[2,3]. Although

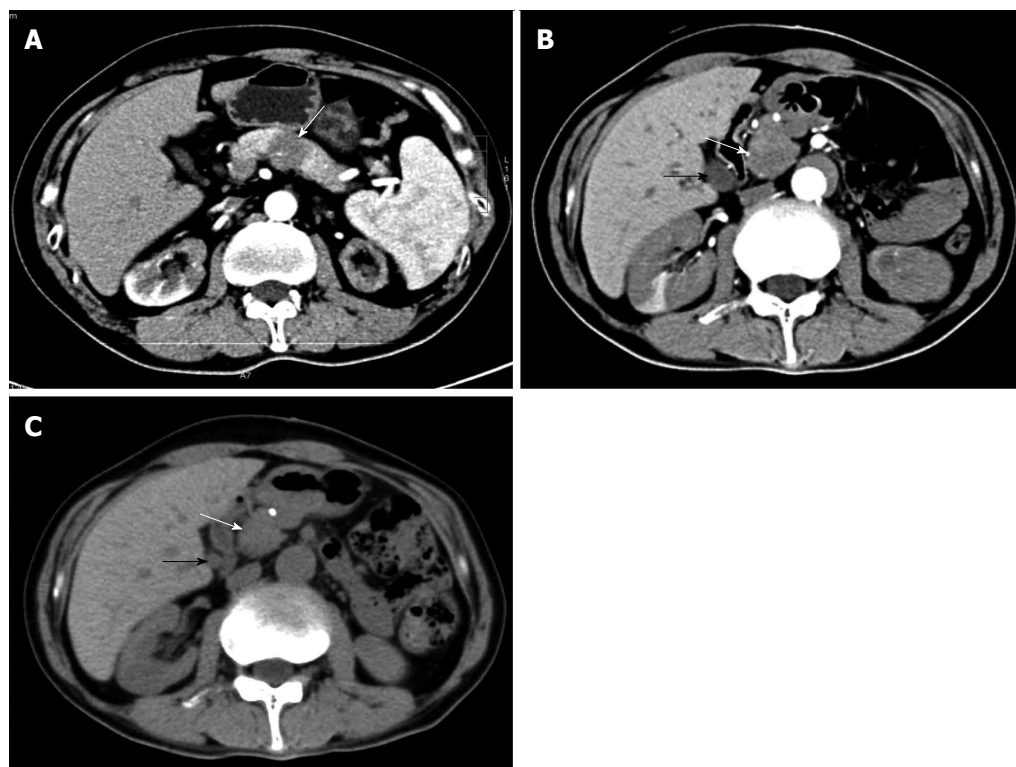


Figure 1 Rare computed tomography images of type I autoimmune pancreatitis. A same image with pancreatic cancer (PC) in the body of the pancreas (white arrow) one year ago prior to admission (A), a similar image of pancreatic head carcinoma (white arrow) accompanied by common bile duct dilation (black arrow) at admission (B), and slightly reduced in the pancreatic head volume (white arrow) with a normal common bile duct (black arrow) after steroid therapy (C).

diffuse swelling of the pancreatic parenchyma and diffuse irregular narrowing of the pancreatic duct system are morphologically characteristics of both subtypes of AIP, a focal type of AIP (f-AIP) has been recently recognized^[4]. The f-AIP exhibits a localized mass lesion in the pancreas, which closely mimics pancreatic cancer (PC)^[4,5]. Since AIP responds extremely well to steroid therapy, the differentiation of AIP from PC is highly important to avoid unnecessary laparotomy or pancreatic resection.

Chronic sclerosing sialadenitis (Küttner's tumour) is a benign tumour-like lesion most commonly affecting the submandibular gland first recognized by Küttner in 1896^[6]. Histologically it is characterized by acinar atrophy, periductal sclerosis, and perilobular lymphocytic infiltrate. Recently, Küttner's tumour has been recognized within the spectrum of IgG4-RD because some samples of sclerosing sialadenitis from Japan or America have abundant IgG4-positive plasma cells^[7]. Although unusual cases that affect the parotid glands or labial glands have also been described^[8], Küttner's tumour arising in the unilateral submandibular gland and synchronously affecting the focal salivary gland in lower lip has not been reported.

Here, we report a rare case of a patient with IgG4-related f-AIP accompanied with Küttner's tumour manifesting itself as a mass in the neck and several lumps in the lower lip, which was originally misdiagnosed of being PC with neck metastasis.

CASE REPORT

A 53-year-old male from Northeast China was admitted for abdominal distension and diarrhea lasting for four years. He presented a painless, hard left neck mass with slight dysfunction of salivary secretion and a 20-pound weight loss over 6 mo. One year prior to admission, positron emission tomography/computed tomography (PET/CT) (data not shown) or CT imaging identified a possible pancreatic body carcinoma resulting in surgical resection of the pancreatic body and tail with en-bloc splenectomy at that time. However, the diagnosis of pancreatic carcinoma was ruled out after a routine histological examination was performed (Figure 1A). The patient denied any history of alcohol, tobacco, or illicit drug use. On examination, several firm 0.3 cm non-tender lumps were seen in the mucosa of his lower lip. He also had a painless, hard, fixed mass in the left submandibular area (suspected cervical metastasis). Abdominal examination revealed mild epigastric tenderness to deep palpation without rebound.

The laboratory test data on admission revealed a markedly elevated erythrocyte sedimentation rate (74 mm/h), and a mildly elevated serum amylase (158 U/L) and lipase (109 U/L). Serum immunological testing displayed high levels of IgG4 (32.7 g/L) and IgG (38.9 g/L), and positive reaction with anti-nuclei antibody.

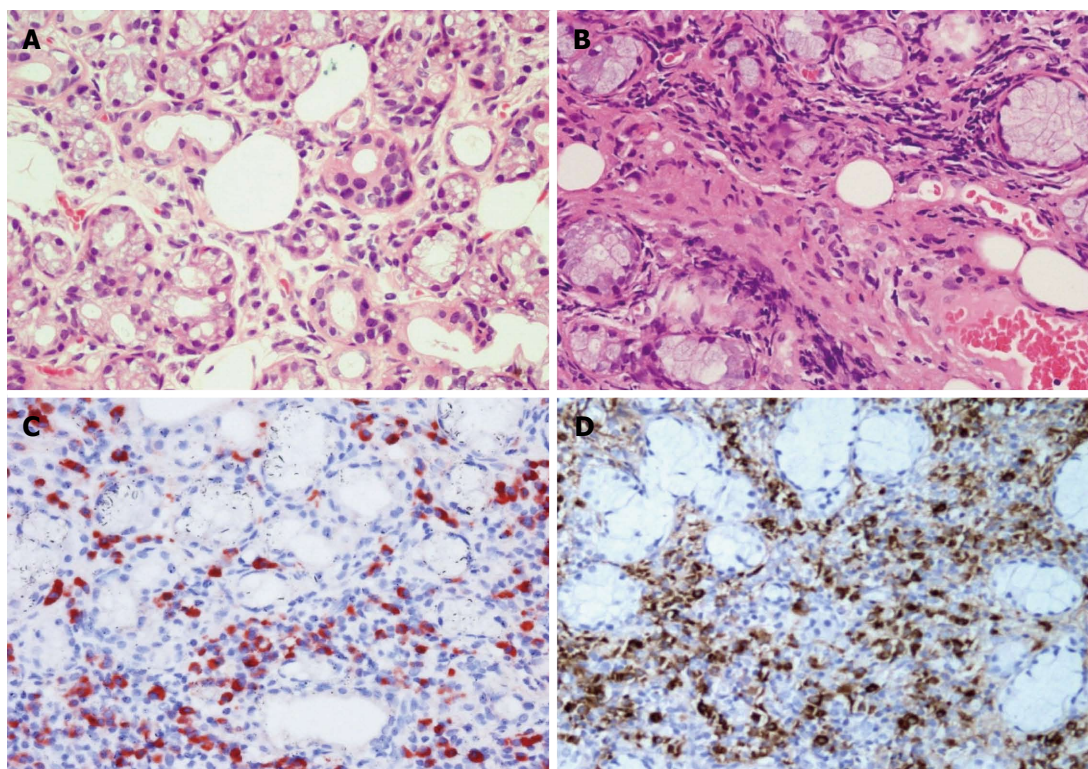


Figure 2 Histological findings of the excisional biopsy specimen of the lower lip lumps. Hematoxylin and eosin (HE) stain showing normal labial gland (A, $\times 400$); acinar atrophy and lymphoplasmacyte infiltration and fibrosis from the patient (B, $\times 400$); immunohistochemical staining for IgG4 (red color) (C, $\times 400$) or IgG (yellow color) (D, $\times 400$) in plasma cells from the patient.

An ultrasound scan of the neck showed left swollen submandibular gland (4.2 cm length \times 2.8 cm width \times 2.1 cm height), suggesting the possibility of chronic sialadenitis. An enhanced CT scan of the abdomen revealed a relatively low density of the pancreatic head as well as extra- and intra-hepatic bile duct dilatation (Figure 1B), suggesting the possibility of pancreatic head cancer.

On the 10th day after admission, we suspected neck metastasis of pancreatic head cancer or multiple tumors of the salivary glands or IgG4-related systemic disease. The patient underwent an excisional biopsy examination of the lower lip lumps to obtain definitive histological diagnosis. In distinction from healthy individuals, hematoxylin and eosin (HE) staining of the excisional biopsy specimen revealed acinar atrophy, abundant lymphocytopenic plasma cell infiltration, and marked fibrosis (Figure 2A, B). Immunohistochemical staining showed abundant IgG4-positive plasma cells in the excisional labial gland specimen of the patient, with a ratio of IgG4/IgG-positive plasma cells of more than 50% (Figure 2C, D). Fine needle aspiration biopsy (FNA) of the left submandibular gland showed changes consistent with labial gland specimen (data not shown). The patient was diagnosed with K  ttner's tumour which affected left submandibular gland and labial salivary gland.

To determine whether the patient suffered from IgG4-related autoimmune pancreatitis, pancreatic specimens that had been obtained from the patient by excision of the body mass of the pancreas one year prior to

this admission were stained with HE which revealed the presence of phlebitis (Figure 3A), storiform-type fibrosis and dense lymphoplasmacyte infiltration (Figure 3A, B). Immunohistochemical staining showed numerous IgG4-positive plasmacytic infiltrations around the intact pancreatic ducts, with a ratio of IgG4/IgG-positive plasmacytes of more than 40% thus meeting the diagnostic criteria for IgG4-related f-AIP (Figure 3C, D).

On the 17th day after admission, the patient received 30 mg/d of prednisone for 4 d without any side effects, and was then discharged with the same steroid dose for up to 4 wk. At his 4-wk follow-up, the patient exhibited no signs of either abdominal distension or diarrhea. His previously swollen submandibular gland on the left side was markedly reduced but still palpable, while the epigastric region was not painful upon deep palpation. A CT scan of the abdomen showed slight reduction of the pancreatic head volume or in the extra- and intra-hepatic bile duct dilatations (Figure 1C). The previously elevated serum levels of amylase and lipase had returned to normal value ranges, but serum IgG4 level was still high (15.6 g/L). The patient then received a long-term maintenance dose of 10 mg/d of prednisone after steroid tapering. At 12-mo follow-up, his illness had not recurred.

DISCUSSION

IgG4-RD is a recently recognized multi-organ fibro-inflammatory condition with a propensity to manifest

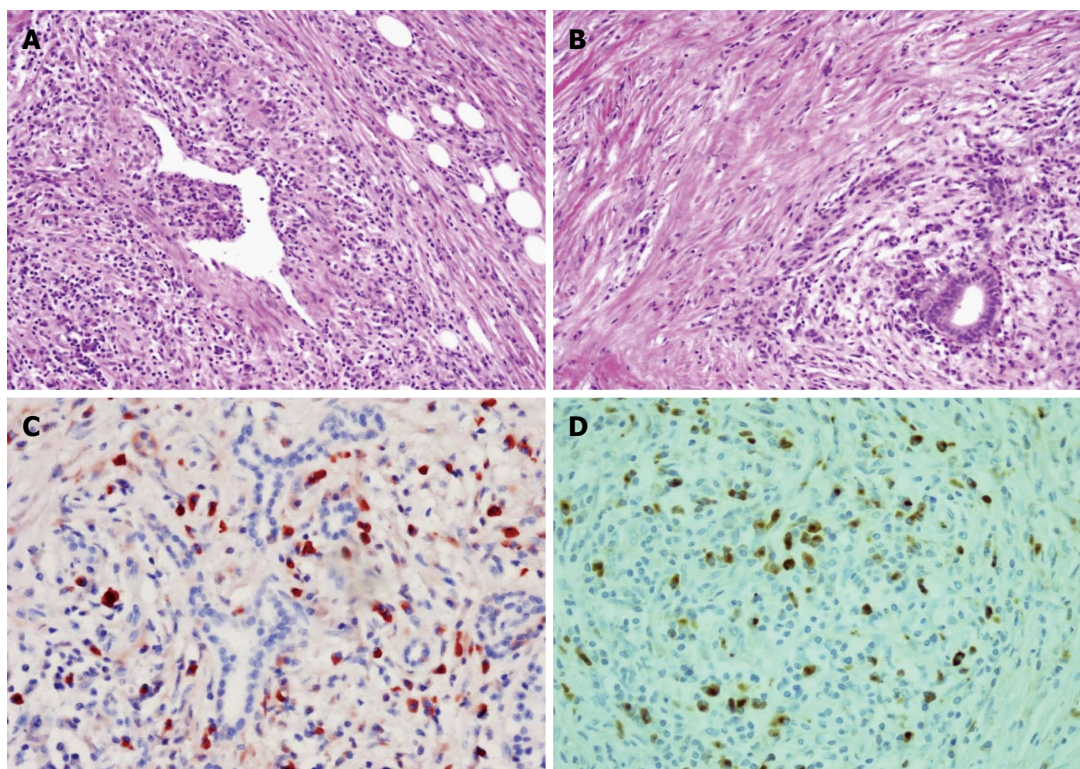


Figure 3 Histological findings of the resected specimen from pancreatic body mass. Hematoxylin and eosin (HE) stain showing phlebitis (A, $\times 200$); numerous lymphoplasmacyte infiltration and storiform fibrosis (B, $\times 200$); immunohistochemical staining showing IgG4-positive plasma cells (C, $\times 400$) and IgG-positive plasma cells (D, $\times 400$) in the resected pancreatic sections of the patient.

itself as a mass-forming lesion characterized by the presence of abundant IgG4⁺ plasma cells, elevation of serum IgG4 levels, and a dramatic steroid responsiveness^[9]. New histological diagnostic criteria for IgG4-RD require the presence of at least two of three characteristic histological features, namely, dense lymphoplasmacytic infiltration, fibrosis arranged at least focally in a storiform pattern, and obliterative phlebitis^[10]. Thus, the patient in this study fully met the diagnostic criteria for IgG4-related f-AIP and Küttner's tumour.

Although diagnosis of AIP has greatly improved because of growing awareness of the condition and proposed diagnostic criteria^[3,10], there still remain no good practical strategies to distinguish AIP from PC. Clinicians must differentiate between the two disorders to prevent unnecessary surgery or delayed initiation of corticosteroid therapy. It has been reported that about 2.5% of pancreatic resections were performed in AIP patients following a mistaken diagnosis of PC^[11] and that 35.3% of f-AIP patients were surgically treated because PC was suspected^[12]. The patient in this study underwent surgical resection of the pancreatic body mass one year prior to admission, which we subsequently histologically confirmed as IgG4-related f-AIP.

Over the last decade, clinicians have paid great attention to the differentiation of AIP from PC. Recently Sun *et al.*^[13] reported that five radiological imaging features helpful for diagnosing f-AIP were (1) sausage-shaped enlargement; (2) delayed homogeneous enhancement; (3)

hypoattenuating capsule-like rim; (4) irregular narrowing of the main pancreatic duct (MPD) and/or stricture of the common bile duct; and (5) MPD upstream dilatation ≤ 5 mm. Since focal mass and pancreatic duct dilatation are the most common findings for PC as well^[14], differentiating such cases of f-AIP from PC is rather difficult using CT or magnetic resonance imaging alone. A recent study showed that serum IgG4 > 280 mg/dL or other organ involvement (exapancreatic biliary stricture, salivary gland swelling and retroperitoneal fibrosis) were highly specific findings for f-AIP^[15]. More recently, ¹⁸F-fluorodeoxyglucose (FDG)-PET/CT could be used to monitor the drug efficacy of IgG4-RD because abnormal FDG uptake in all affected lesions had completely disappeared after therapy^[16]. Although endoscopic ultrasound-guided FNA (EUS-FNA) is useful to either diagnose or rule out PC, definitive diagnosis of AIP is difficult by EUS-FNA because of the small sample size obtained^[11]. Recently, EUS-guided core biopsy techniques are recommended^[11]. IgG4 immunostaining of biopsy specimens obtained from the major duodenal papilla was also used for diagnosis of AIP^[17]. Therefore, comprehensive data including clinical, imaging, serological, histological differences and other organ involvement should be analyzed to differentiate f-AIP from PC.

The patient in this study responded well to corticosteroid therapy. However, after 4-wk steroid therapy the serum IgG4 level was still high (15.6 g/L). Since IgG4 antibodies are directly pathogenic in IgG4-RD, rituximab

therapy is chosen to realize rapid decline of serum IgG4 levels and prompt clinical improvement in IgG4-RD by depleting the pool B lymphocytes that replenish short-lived IgG4-secreting plasma cells^[18]. Additionally, steroid sparing regimens such as Azathioprine and mycophenolate mofetil may be used in patients with incomplete response to steroid.

In summary, we report a rare case of IgG4-related f-AIP and Küttner's tumour which primarily mimics pancreatic cancer and neck metastasis. Since the differentiation of f-AIP from PC is very difficult and their treatment and prognosis are quite different, we suggest that AIP should always be considered in case of a focal pancreatic mass.

COMMENTS

Case characteristics

A 53-year-old male patient primarily presented with pancreatic body mass, left neck mass and several lumps in his lower lip mimicking pancreatic cancer (PC) and neck metastasis.

Clinical diagnosis

The patient was diagnosed with IgG4-related focal type of autoimmune pancreatitis (f-AIP) and Küttner's tumour.

Differential diagnosis

The differential diagnosis included PC with neck metastasis and other malignant tumors in the neck region.

Laboratory diagnosis

The patient was diagnosed with IgG4-related f-AIP and Küttner's tumour on the basis of numerous IgG4-positive plasma cells in excisional pancreatic mass sample and labial gland specimen, and also had a high serum IgG4 level.

Imaging diagnosis

Computed tomography (CT) showed a same image with PC in the body of the pancreas one year ago prior to admission and a similar image of pancreatic head carcinoma at admission. An ultrasound scan of the neck showed left swollen submandibular gland.

Pathological diagnosis

The patient underwent pancreatic body mass and labial gland lumps resection. He was diagnosed with IgG4-related f-AIP and Küttner's tumour by immunohistochemistry.

Treatment

The patient received 30 mg/d of prednisone for 4-wk, and a long-term maintenance dose of 10 mg/d of prednisone.

Related reports

IgG4-related AIP or Küttner's tumour has been reported previously, however, IgG4-related f-AIP accompanied with Küttner's tumour manifesting itself as a mass in the neck and several lumps in the lower lip has not yet been described.

Term explanation

Chronic sclerosing sialadenitis, also known as Küttner's tumour is a benign tumor lesion most commonly affecting the submandibular gland first recognized by Küttner in 1896. Recently, Küttner's tumour has been recognized within the spectrum of IgG4-related disease because some samples of sclerosing sialadenitis from Japan or America have abundant IgG4-positive plasma cells.

Experiences and lessons

This case reports IgG4-related f-AIP accompanied with Küttner's tumour which primarily mimics PC and neck metastasis. Since the differentiation of f-AIP from PC is quite difficult, the authors suggest that AIP should always be considered in case of a focal pancreatic mass.

Peer review

This is an important case from the awareness point of view, and also of the prognosis being far more positive than that of pancreatic cancer with metastasis. The manuscript is interesting and well written.

REFERENCES

- 1 **Yoshida K**, Toki F, Takeuchi T, Watanabe S, Shiratori K, Hayashi N. Chronic pancreatitis caused by an autoimmune abnormality. Proposal of the concept of autoimmune pancreatitis. *Dig Dis Sci* 1995; **40**: 1561-1568 [PMID: 7628283 DOI: 10.1007/BF02285209]
- 2 **Deshpande V**, Gupta R, Sainani N, Sahani DV, Virk R, Ferrone C, Khosroshahi A, Stone JH, Lauwers GY. Subclassification of autoimmune pancreatitis: a histologic classification with clinical significance. *Am J Surg Pathol* 2011; **35**: 26-35 [PMID: 21164284 DOI: 10.1097/PAS.0b013e3182027717]
- 3 **Okazaki K**, Tomiyama T, Mitsuyama T, Sumimoto K, Uchida K. Diagnosis and classification of autoimmune pancreatitis. *Autoimmun Rev* 2014; **13**: 451-458 [PMID: 24424184 DOI: 10.1016/j.autrev.2014.01.010]
- 4 **Shiokawa M**, Kodama Y, Hiramatsu Y, Kurita A, Sawai Y, Uza N, Watanabe T, Chiba T. Autoimmune pancreatitis exhibiting multiple mass lesions. *Case Rep Gastroenterol* 2011; **5**: 528-533 [PMID: 22087084 DOI: 10.1159/000331799]
- 5 **Matsumoto I**, Shinzeki M, Toyama H, Asari S, Goto T, Yamada I, Ajiki T, Fukumoto T, Ku Y. A focal mass-forming autoimmune pancreatitis mimicking pancreatic cancer with obstruction of the main pancreatic duct. *J Gastrointest Surg* 2011; **15**: 2296-2298 [PMID: 21584824 DOI: 10.1007/s11605-011-1543-5]
- 6 **Chow TL**, Chan TT, Choi CY, Lam SH. Kuttner's tumour (chronic sclerosing sialadenitis) of the submandibular gland: a clinical perspective. *Hong Kong Med J* 2008; **14**: 46-49 [PMID: 18239243]
- 7 **Geyer JT**, Ferry JA, Harris NL, Stone JH, Zukerberg LR, Lauwers GY, Pilch BZ, Deshpande V. Chronic sclerosing sialadenitis (Küttner tumor) is an IgG4-associated disease. *Am J Surg Pathol* 2010; **34**: 202-210 [PMID: 20061932 DOI: 10.1097/PAS.0b013e3181c811ad]
- 8 **Paul R**, Shekar K, Singh M. Kuttner tumour: an unusual cause of enlargement of a minor salivary gland in the lip. *Br J Oral Maxillofac Surg* 2010; **48**: 152-153 [PMID: 19926183 DOI: 10.1016/j.bjoms.2009.07.029]
- 9 **Mazzucchelli R**, Racchini S, Barbisan F, Galosi AB, Giorgini S. IgG4-related sclerosing disease: an emerging entity frequently misdiagnosed. *Anal Quant Cytopathol Histopathol* 2013; **35**: 189-196 [PMID: 24341121]
- 10 **Deshpande V**, Zen Y, Chan JK, Yi EE, Sato Y, Yoshino T, Klöppel G, Heathcote JG, Khosroshahi A, Ferry JA, Aalberse RC, Bloch DB, Brugge WR, Bateman AC, Carruthers MN, Chari ST, Cheuk W, Cornell LD, Fernandez-Del Castillo C, Forcione DG, Hamilos DL, Kamisawa T, Kasashima S, Kawa S, Kawano M, Lauwers GY, Masaki Y, Nakanuma Y, Notohara K, Okazaki K, Ryu JK, Saeki T, Sahani DV, Smyrk TC, Stone JR, Takahira M, Webster GJ, Yamamoto M, Zamboni G, Umehara H, Stone JH. Consensus statement on the pathology of IgG4-related disease. *Mod Pathol* 2012; **25**: 1181-1192 [PMID: 22596100 DOI: 10.1038/modpathol.2012.72]
- 11 **Takuma K**, Kamisawa T, Gopalakrishna R, Hara S, Tabata T, Inaba Y, Egawa N, Igarashi Y. Strategy to differentiate autoimmune pancreatitis from pancreas cancer. *World J Gastroenterol* 2012; **18**: 1015-1020 [PMID: 22416175 DOI: 10.3748/wjg.v18.i10.1015]
- 12 **Kamisawa T**, Imai M, Yui Chen P, Tu Y, Egawa N, Tsuruta K, Okamoto A, Suzuki M, Kamata N. Strategy for differentiating autoimmune pancreatitis from pancreatic cancer. *Pancreas* 2008; **37**: e62-e67 [PMID: 18815540 DOI: 10.1097/MPA.0b013e318175e3a0]
- 13 **Sun GF**, Zuo CJ, Shao CW, Wang JH, Zhang J. Focal autoimmune pancreatitis: radiological characteristics help to distinguish from pancreatic cancer. *World J Gastroenterol* 2013; **19**: 3634-3641 [PMID: 23801866 DOI: 10.3748/wjg.v19.i23.3634]
- 14 **Zaheer A**, Singh VK, Akshintala VS, Kawamoto S, Tsai SD,

- Gage KL, Fishman EK. Differentiating autoimmune pancreatitis from pancreatic adenocarcinoma using dual-phase computed tomography. *J Comput Assist Tomogr* 2014; **38**: 146-152 [PMID: 24424563 DOI: 10.1097/RCT.0b013e3182a9a431]
- 15 **Naitoh I**, Nakazawa T, Hayashi K, Okumura F, Miyabe K, Shimizu S, Kondo H, Yoshida M, Yamashita H, Ohara H, Joh T. Clinical differences between mass-forming autoimmune pancreatitis and pancreatic cancer. *Scand J Gastroenterol* 2012; **47**: 607-613 [PMID: 22416894 DOI: 10.3109/00365521.2012.667147]
 - 16 **Takahashi H**, Yamashita H, Morooka M, Kubota K, Takahashi Y, Kaneko H, Kano T, Mimori A. The utility of FDG-PET/CT and other imaging techniques in the evaluation of IgG4-related disease. *Joint Bone Spine* 2014; **81**: 331-336 [PMID: 24568886]
 - 17 **Kamisawa T**, Tu Y, Egawa N, Tsuruta K, Okamoto A. A new diagnostic endoscopic tool for autoimmune pancreatitis. *Gastrointest Endosc* 2008; **68**: 358-361 [PMID: 18513718 DOI: 10.1016/j.gie.2008.02.018]
 - 18 **Khosroshahi A**, Bloch DB, Deshpande V, Stone JH. Rituximab therapy leads to rapid decline of serum IgG4 levels and prompt clinical improvement in IgG4-related systemic disease. *Arthritis Rheum* 2010; **62**: 1755-1762 [PMID: 20191576 DOI: 10.1002/art.27435]

P- Reviewer: Gonzalez-Granado LI, Khan S, Murdaca G

S- Editor: Nan J **L- Editor:** A **E- Editor:** Ma S





Published by **Baishideng Publishing Group Inc**

8226 Regency Drive, Pleasanton, CA 94588, USA

Telephone: +1-925-223-8242

Fax: +1-925-223-8243

E-mail: bpgoffice@wjgnet.com

Help Desk: <http://www.wjgnet.com/esps/helpdesk.aspx>

<http://www.wjgnet.com>



ISSN 1007-9327

