

## Endoscopic diagnosis and management of type I neuroendocrine tumors

Yuichi Sato

Yuichi Sato, Department of Gastroenterology, Niigata University Graduate School of Medical and Dental Sciences, Niigata 951-8121, Japan

**Author contributions:** Sato Y solely contributed to this manuscript.

**Conflict-of-interest:** The author declares that no financial or other conflicts of interest exist in relation to the content of this article.

**Open-Access:** This article is an open-access article which was selected by an in-house editor and fully peer-reviewed by external reviewers. It is distributed in accordance with the Creative Commons Attribution Non Commercial (CC BY-NC 4.0) license, which permits others to distribute, remix, adapt, build upon this work non-commercially, and license their derivative works on different terms, provided the original work is properly cited and the use is non-commercial. See: <http://creativecommons.org/licenses/by-nc/4.0/>

**Correspondence to:** Yuichi Sato, MD, Department of Gastroenterology, Niigata University Graduate School of Medical and Dental Sciences, Asahimachi-dori, Niigata 951-8121, Japan. [yuichi@med.niigata-u.ac.jp](mailto:yuichi@med.niigata-u.ac.jp)

Telephone: +81-25-2272207

Fax: +81-25-2270776

Received: September 5, 2014

Peer-review started: September 6, 2014

First decision: November 27, 2014

Revised: December 9, 2014

Accepted: January 9, 2015

Article in press: January 12, 2015

Published online: April 16, 2015

### Abstract

Type I gastric neuroendocrine tumors (TI-GNETs) are related to chronic atrophic gastritis with hypergastrinemia and enterochromaffin-like cell hyperplasia. The incidence of TI-GNETs has significantly increased, with the great majority being TI-GNETs. TI-GNETs present as small (< 10 mm) and multiple lesions endoscopically and are generally limited to the mucosa or submucosa. Narrow band imaging and high resolution magnification endoscopy may be helpful for the endoscopic diagnosis of TI-GNETs. TI-GNETs are usually histologically classi-

fied by World Health Organization criteria as G1 tumors. Therefore, TI-GNETs tend to display nearly benign behavior with a low risk of progression or metastasis. Several treatment options are currently available for these tumors, including surgical resection, endoscopic resection, and endoscopic surveillance. However, debate persists about the best management technique for TI-GNETs.

**Key words:** Gastric neuroendocrine tumor; Narrow band imaging; Magnifying endoscopy; Endoscopic submucosal dissection; Endoscopic surveillance

© **The Author(s) 2015.** Published by Baishideng Publishing Group Inc. All rights reserved.

**Core tip:** The incidence of type I gastric neuroendocrine tumors (TI-GNETs) has significantly increased, TI-GNETs are the most frequently diagnosed of all GNETs, accounting for about 70%-80%. Endoscopically, TI-GNETs are present as small (< 10 mm), polypoid lesions or, more frequently, as smooth, rounded submucosal lesions. Especially, narrow band imaging and high resolution magnification endoscopy may be helpful for the endoscopic diagnosis of TI-GNETs. TI-GNETs tend to display a nearly benign behavior and a low risk of progression or metastasis in spite of submucosal invasion. Therefore, endoscopic submucosal dissection is a feasible technique for the removal of TI-GNETs.

Sato Y. Endoscopic diagnosis and management of type I neuroendocrine tumors. *World J Gastrointest Endosc* 2015; 7(4): 346-353 Available from: URL: <http://www.wjgnet.com/1948-5190/full/v7/i4/346.htm> DOI: <http://dx.doi.org/10.4253/wjge.v7.i4.346>

### INTRODUCTION

Neuroendocrine tumors (NETs), originally termed

**Table 1** Characteristics of gastric neuroendocrine tumors

Characteristic	Type I GNETs	Type II GNETs	Type III GNETs
Proportion of all GNETs	70%-80%	5%-10%	10%-15%
Associated disease	Chronic atrophic gastritis	MEN type 1/ZES	None
Gender	Women > men	Women = men	Women < men
Tumor number	≥ 1	≥ 1	1
Tumor size	< 10 mm	< 10 mm	Often > 20 mm
Tumor location	Fundus or corpus	Fundus or corpus	Any region
Histology	Well differentiated	Well differentiated	From well to poorly differentiated
Invasion depth	Mucosa or submucosa	Mucosa or submucosa	Any depth
Serum gastrin level	High	High	Normal
Gastric pH	Low	High	Normal
Metastasis risk	2%-5%	10%-20%	> 50%
Tumor-related death	0	< 10%	25%-30%
Prognosis	Excellent	Good	Poor

GNET: Gastric neuroendocrine tumor; MEN: Multiple endocrine neoplasia; ZES: Zollinger-Ellison syndrome.

carcinoid tumors, arise from neuroendocrine cells of the diffuse neuroendocrine system<sup>[1]</sup>. NETs are rare neoplasms; however, the incidence of gastrointestinal NETs (GNET) is gradually increasing with all NETs<sup>[2,3]</sup>, while the ratio of GNETs to all GI NETs has increased according to the latest reports<sup>[4-9]</sup>. This increase in the incidence of GNETs reflects the true increase (that the incidence of GNET is increasing); however, this also might be related to improvements in diagnostic technology including endoscopy and increased GNET awareness. Because of the increasing incidence and prevalence, GNETs represent a substantial clinical problem.

GNETs are classified into three distinct subgroups: types I to III<sup>[10]</sup>. Table 1 shows the clinical characteristics of these three types<sup>[11-19]</sup>. Type I GNETs (TI-GNETs) arise in patients with chronic atrophic gastritis (CAG), including autoimmune gastritis (AIG; *i.e.*, type-A gastritis) and *Helicobacter pylori* (*H. pylori*)-associated atrophic gastritis. Most TI-GNETs are small (< 10 mm), multiple, located within the gastric fundus or corpus, and limited to the mucosa or submucosa. TI-GNETs comprise the great majority (70%-80%) of GNETs. TI-GNETs are generally considered benign, with low metastasis rates and a 100% long-term survival rate.

Type II GNETs, which account for 5%-6% of all GNETs, are associated with the gastrin-secreting neoplasms in multiple endocrine neoplasia-Zollinger-Ellison syndrome (MEN-ZES). Therefore, hyperacidity-induced peptic ulceration is often seen in patients with type II GNETs. Type II GNETs are also small, multiple, and considered benign. However, the survival rate of patients with type II GNETs is lower than that

of patients with type I because of the course of the gastrinoma<sup>[20]</sup>.

On the contrary, type III GNETs are sporadic tumors whose development is unrelated to gastrin conditions. Type III NETs are often single and large, have a diameter around 20 mm, and comprise approximately 10%-15% of all GNETs. These GNETs behave more aggressively and are usually metastatic and spread to the regional lymph nodes or liver.

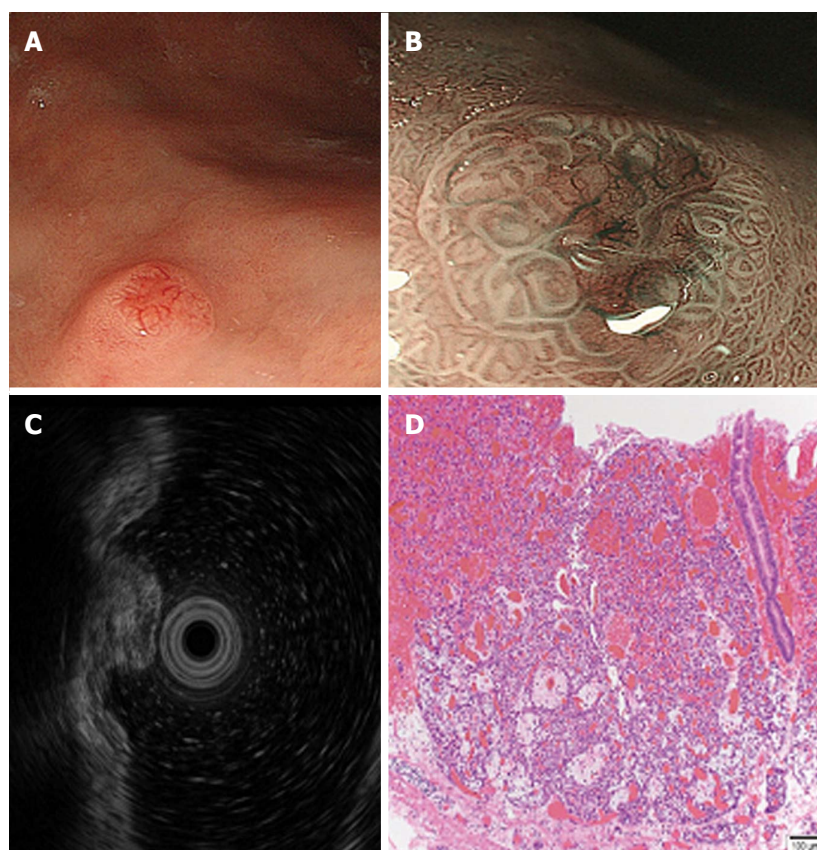
This review focuses on TI-GNET pathogenesis, endoscopic diagnosis, and management.

## TI-GNET PATHOGENESIS

TI-GNETs are associated with CAG, which leads to hypergastrinemia and enterochromaffin-like (ECL) cell hyperplasia. The loss of fundic glands seen in CAG results in a lack of acid production (achlorhydria). In response to achlorhydria, antral G-cells undergo hyperplasia and secrete more gastrin, resulting in hypergastrinemia. Gastrin stimulates gastric epithelial cell proliferation and acts as a trophic factor for ECL cells and leads to ECL cell hyperplasia. Therefore, hypergastrinemia results in the progression to TI-GNET development.

In either AIG- or *H. pylori*-associated gastritis, under the CAG condition, a lack of gastric acid production results in hypergastrinemia and leads to TI-GNET progression. In the AIG, anti-parietal cell antibody acts on gastric parietal cells, leading to acid secretion disorder and resulting in more gastrin secretion by antral G-cells. The role of *H. pylori* in TI-GNET development is unclear. However, it is well known that *H. pylori* infection induces hypergastrinemia<sup>[21,22]</sup>. *H. pylori* induces gastric mucosal atrophy, resulting in low acid output<sup>[23]</sup>. The negative feedback loop created by this low acid output causes hypergastrinemia. One possible mechanism is that antibodies against *H. pylori* may act like those against parietal cells<sup>[24-26]</sup>. Furthermore, *H. pylori* lipopolysaccharide stimulates DNA synthesis in ECL cells, suggesting that it may contribute to ECL cell hyperplasia<sup>[27]</sup>. Some reports have suggested that *H. pylori* infection might be a risk factor for TI-GNET in humans due to hypergastrinemia<sup>[28,29]</sup>. However, a minority of patients with CAG had TI-GNETs; therefore, it has been proposed that other cofactors (*i.e.*, Reg<sup>[30]</sup>, mcl-1<sup>[31]</sup>, *MEN-1* gene mutation<sup>[32]</sup>) might play a role in TI-GNET development.

Proton pump inhibitors (PPI) create hypergastrinemia secondary to gastric hypoacidity. Therefore, PPI treatment causes ECL hyperplasia in rats<sup>[33,34]</sup>. In humans, there are some case reports of GNETs that developed after long-term PPI treatment<sup>[35-38]</sup>, and one revealed disappearance of the tumors after PPI treatment discontinuation<sup>[38]</sup>. However, the number of reports about GNETs compared to those on PPI users remains very small, and it is generally accepted that continual PPI use is not associated with GNET development in



**Figure 1** Type I gastric neuroendocrine tumor. A: Conventional endoscopic image taken under white light. A hemispherical reddish polyp with a central depression is visible; B: Magnifying endoscopic image taken with a narrow band imaging system. Gastric pit-like structures present on the tumor's surface, except for the central depression. In the central depression, the pit-like structure was not present, whereas dilated blackish-brown subepithelial vessels with corkscrew capillaries are visible; C: Endoscopic ultrasound showing a hypoechoic intramural structure in the second layer of the tumor; D: Histological appearance. Magnification (40 ×) of a hematoxylin-and-eosin-stained section of the tumor revealing a gastric neuroendocrine tumor limited to the mucosa.

humans.

## TI-GNET DIAGNOSIS

### Clinical features

Most patients with TI-GNETs have no specific symptoms related to "carcinoid syndrome"<sup>[39,40]</sup> such as flushing, tachycardia, and diarrhea. However, those with TI-GNET have nonspecific symptoms (nausea, abdominal pain, dyspepsia)<sup>[41]</sup> or pernicious anemia complicated by AIG. Therefore, TI-GNETs are detected incidentally during esophagogastroduodenoscopy.

TI-GNETs are more prevalent in women<sup>[14,16]</sup>, a finding that is attributed to the fact that AIG occurs more commonly in females<sup>[42]</sup>. AIG is also substantially more common in patients with other autoimmune-related diseases (type 1 diabetes mellitus<sup>[43]</sup>, autoimmune thyroiditis<sup>[44]</sup>, and primary biliary cirrhosis<sup>[45]</sup>) than in the healthy population. Therefore, the existence of TI-GNETs should be also appropriately investigated in patients with those diseases. Moreover, under the condition of CAG, the stomach becomes unable to produce sufficient amounts of pepsinogen and pepsin due to gastric chief cell injury. Therefore, patients with CAG show the low pepsinogen I level and pepsinogen I

/II ratio on serological testing<sup>[46]</sup>, while the measurement of pepsinogen I level and pepsinogen I/II ratio might be helpful for distinguishing TI-GNETs from the other two GNET types.

Serum chromogranin A (CgA) levels are increased in patients with TI-GNETs<sup>[39]</sup>. However, an elevated serum CgA level is not specific to GNETs. Therefore, measuring CgA is not recommended as a routine screening but rather as a surveillance marker for monitoring GNET progression.

### Endoscopy

TI-GNETs are often small (< 10 mm), multiple, and found in the gastric corpus or fundus. Endoscopically, TI-GNETs present as polypoid lesions or, more frequently, as smooth and rounded submucosal lesions<sup>[47]</sup> and may appear yellow or red in color. A depression can sometimes be seen at the center of the tumor. The use of high-resolution magnifying endoscopy (ME) and narrow band imaging (NBI) might be helpful for the endoscopic diagnosis of GNETs<sup>[48]</sup>. The ME with NBI approach provides very clear images of the fine superficial structure and microvasculature of the gastric mucosa. Endoscopic TI-GNET images are shown in Figure 1. Endoscopy with white light revealed



**Table 2 Histological grading of gastrointestinal neuroendocrine neoplasms**

ENETS grading	Mitotic index (× 10 HPF)	Ki-67 proliferation index (%)	WHO classification 2010
G1	< 2	≤ 2	NET G1 (carcinoid)
G2	2-20	3-20	NET G2
G3	> 20	> 20	NEC G3; large-cell or small-cell type

ENETS: European neuroendocrine tumor society; HPF: High power field; NET: Neuroendocrine tumor; NEC: Neuroendocrine carcinoma.

a hemispherical reddish polyp with or without a central depression (Figure 1A). Most of the GNET surface is covered with normal mucosa; therefore, gastric pits can be visualized in ME using the NBI system. However, in the area of the central depression, gastric glands vanish, so the gastric pits cannot be visualized. The tumor grows expansively beneath the epithelium; therefore, abnormally dilated subepithelial vessels with blackish-brown or cyan corkscrew-shaped capillaries are visible (Figure 1B). This finding reflects the fact that the tumor grew beneath the epithelium without a gland structure. Differential diagnoses include gastric lymphoma and metastatic lesions (breast cancer, lung cancer, and melanoma), which also present as protruding tumors covered with non-tumorous mucosa.

Endoscopic ultrasonography (EUS) is useful for judging GNET invasion depth<sup>[49]</sup>. On EUS, GNETs are commonly seen in the second (deeper mucosa) or third (submucosa) echo layer and have a hypoechoic intramural structure (Figure 1C). The tumors generally have a hypoechoic structure with uniform echotexture. The tumor margins are typically well defined and smooth, and the overall shape is round and oval. A 20 MHz frequency ultrasound probe is generally useful for the evaluation of small GNETs; however, lesions > 20 mm may require the use of a lower frequency (12 MHz) probe<sup>[50]</sup>.

Additionally, as documented above, the greater portions of these tumors are covered with normal mucosa; therefore, the collection of adequate endoscopic biopsy specimens in the deeper cut is required for diagnosis. Sampling biopsy should be taken of not only the TI-GNET lesion but also each antrum and corpus/fundus to assess for the presence of atrophic gastritis and hyperplastic/dysplastic proliferation of ECL cells as TI-GNET precursors<sup>[51]</sup>.

### Histology

TI-GNETs are composed of small uniform cells in nests and infiltrating strands with a ribbon-like, tubular, or acinar pattern (Figure 1D). According to the European Neuroendocrine Tumor Society (ENETS) consensus proposal in 2006, NETs are classified by counting mitosis and Ki67 index (Table 2)<sup>[52]</sup>. Based on this grading method, in 2010, the World Health Organization

(WHO) classification<sup>[53]</sup>, histological classification of NETs is based on proliferation and differentiation: G1 NET, G2 NET, neuroendocrine carcinoma (NEC), mixed adenoneuroendocrine carcinoma, and hyperplastic and pre-neoplastic lesions. A G3 tumor classified by ENETS criteria would correspond to NEC on WHO criteria. Histologically, most TI-GNETs are G1 NETs.

### Other imaging

Computed tomography or magnetic resonance imaging can provide useful information about local spread and distal metastasis to aid with tumor staging. The role of fludeoxyglucose positron emission tomography is unclear in the assessment of TI-GNETs<sup>[54]</sup>. Findings of somatostatin receptor scintigraphy, also known as an octreoscan, are often negative in TI-GNETs<sup>[55]</sup> because this method cannot usually identify small GI-NETs.

## TI-GNET MANAGEMENT

The clinical management and treatment of TI-GNETs depends on tumor size and the presence of risk factors such as muscular wall infiltration, increased proliferation, and/or metastasis. Simple surveillance or endoscopic resection (ER) is generally recommended for TI-GNETs < 10 mm that have not invaded the muscularis propria or otherwise metastasized. The treatment of TI-GNETs 10-20 mm that are limited to the submucosa is controversial: ENETS guidelines recommend ER, whereas National Comprehensive Cancer Network (NCCN) guidelines<sup>[56]</sup> recommend both ER and endoscopic surveillance. Patients with TI-GNETs measuring > 20 mm, or those that have invaded beyond the submucosa, or have multiple lesions that are unsuitable for ER generally require surgical resection.

### Endoscopic resection

Hitherto, endoscopic mucosal resection (EMR) has been recommended and is performed, as it is the most useful method of mucosal resection for local TI-GNETs. However, TI-GNETs frequently invade the submucosa; therefore, they are difficult to remove completely, even when small, using snare polypectomy or conventional EMR. In contrast, endoscopic submucosal dissection (ESD) is a feasible technique for the removal of tumors such as TI-GNETs within the submucosal layer. Recent reports have shown that the complete resection rate of GNETs using ESD was superior to that using EMR<sup>[57,58]</sup>.

### Surgical resection

Surgical resection is generally recommended for TI-GNETs > 20 mm in diameter or those that have invaded beyond the submucosa<sup>[52,56]</sup>. Moreover, surgery should also be performed in the presence of lymph nodal, distant disease spread, or poorly differentiated neoplasms<sup>[51]</sup>. For surgical therapy, local resection and/or antrectomy to reduce gastrin levels should

be chosen. Antrectomy removes G-cell-mediated hypergastrinemia; however, it might not effectively prevent recurrence and/or metastasis<sup>[59]</sup>. This suggests that TI-GNETs can grow autonomously independent of gastrin and beyond the gastrin responsive growing point. In the case of TI-GNET recurrence or persistence after local resection and antrectomy, total gastrectomy would be needed.

### Medical management

Somatostatin analogs (SSAs) act on G-cells to inhibit gastrin secretion and play a role in reducing ECL cell hyperplasia. SSA treatment effectively reduces TI-GNET number and size<sup>[60-62]</sup>. However, its use cannot be recommended due to its short-term effects (*i.e.*, the tumor recurs after its cessation)<sup>[63]</sup> and its relatively high cost. Recently, natezipide (YF476), a peripheral gastrin (CCK-B) receptor antagonist, has been reported to suppress gastric acid output and ECL cell proliferation and reduce TI-GNET size and number<sup>[64]</sup>. However, there is no study on the long-term administration or large studies on CCK-B receptor antagonist treatment for TI-GNETs.

## TI-GNET PROGNOSIS AND FOLLOW-UP STRATEGY

Patients with TI-GNETs generally have an excellent prognosis; in fact, disease-specific survival approaches 100%<sup>[39,40,59,60,65-74]</sup>. Tumor size and depth predict lymph node metastasis for GNETs<sup>[75]</sup>, and presence of metastasis was the only factor that influenced long-term prognosis of patients with GNETs<sup>[40]</sup>. Moreover, histological tumor grading is well correlated with patient survival<sup>[68]</sup>. Therefore, the assessment of tumor metastasis, size, depth, and histological grade may predict patient prognosis. In fact, metastatic TI-GNETs are related to tumor size  $\geq 1$  cm, an elevated Ki-67 index, and high serum gastrin levels<sup>[76]</sup>. On the other hand, TI-GNET recurrence rates are relatively high; however, recurrent lesions are small, indolent, and unrelated to prognosis<sup>[39,72]</sup>.

Post-treatment ENETS guidelines propose that endoscopic surveillance be provided every 12 mo for patients with recurrent TI-GNET and every 24 mo for patients without recurrence<sup>[51]</sup>. NCCN guidelines recommend that patients with small (< 20 mm) TI-GNETs who did not require ER or treatment be evaluated using patient history and a physical examination every 6-12 mo<sup>[56]</sup>. The guidelines also recommend that follow-up endoscopy be performed every 6-12 mo for the first 3 years and annually thereafter if no evidence of recurrence or progression is seen<sup>[56]</sup>. However, an optimal follow-up schedule as a clinical standard has yet to be established.

## CONCLUSION

The incidence of NETs has increased significantly, and

the vast majority of NETs are TI-GNETs. TI-GNETs present as small (< 10 mm) and multiple lesions that are generally limited to the mucosa or submucosa. TI-GNETs tend to display a nearly benign behavior and a low risk of progression or metastasis. Several treatment options are currently available for TI-GNETs; however, their optimal management has not yet been established. Further studies on TI-GNETs are needed to develop new promising management strategies for patients with TI-GNETs.

In routine clinical practice, the careful observation of the gastric mucosa in CAG and the knowledge of the endoscopic characteristic of TI-GNETs would be required for detection of TI-GNETs. When it exists, it would be important to choose appropriate treatment after the assessment of the size, invasion, metastasis and histological grading of the tumors.

## REFERENCES

- 1 Solcia E, Arnold R, Capella C, Klimstra DS, Klöppel G, Komminoth P, Rindi G. Neuroendocrine neoplasms of the stomach. In: Bosman FT, Carneiro F, Hruban RH, Theise ND (ed). WHO classification of Tumours of the digestive system. Lyon: IARC, 2010: 64-68
- 2 Lawrence B, Gustafsson BI, Chan A, Svejda B, Kidd M, Modlin IM. The epidemiology of gastroenteropancreatic neuroendocrine tumors. *Endocrinol Metab Clin North Am* 2011; **40**: 1-18, vii [PMID: 21349409 DOI: 10.1016/j.ecl.2010.12.005]
- 3 Yao JC, Hassan M, Phan A, Dagohoy C, Leary C, Mares JE, Abdalla EK, Fleming JB, Vauthey JN, Rashid A, Evans DB. One hundred years after "carcinoid": epidemiology of and prognostic factors for neuroendocrine tumors in 35,825 cases in the United States. *J Clin Oncol* 2008; **26**: 3063-3072 [PMID: 18565894 DOI: 10.1200/JCO.2007.15.4377]
- 4 Ellis L, Shale MJ, Coleman MP. Carcinoid tumors of the gastrointestinal tract: trends in incidence in England since 1971. *Am J Gastroenterol* 2010; **105**: 2563-2569 [PMID: 20823835 DOI: 10.1038/ajg.2010.341]
- 5 Modlin IM, Lye KD, Kidd M. A 50-year analysis of 562 gastric carcinoids: small tumor or larger problem? *Am J Gastroenterol* 2004; **99**: 23-32 [PMID: 14687136]
- 6 Ito T, Sasano H, Tanaka M, Osamura RY, Sasaki I, Kimura W, Takano K, Obara T, Ishibashi M, Nakao K, Doi R, Shimatsu A, Nishida T, Komoto I, Hirata Y, Nakamura K, Igarashi H, Jensen RT, Wiedenmann B, Imamura M. Epidemiological study of gastroenteropancreatic neuroendocrine tumors in Japan. *J Gastroenterol* 2010; **45**: 234-243 [PMID: 20058030 DOI: 10.1007/s00535-009-0194-8]
- 7 Niederle MB, Hackl M, Kaserer K, Niederle B. Gastroenteropancreatic neuroendocrine tumours: the current incidence and staging based on the WHO and European Neuroendocrine Tumour Society classification: an analysis based on prospectively collected parameters. *Endocr Relat Cancer* 2010; **17**: 909-918 [PMID: 20702725 DOI: 10.1677/ERC-10-0152]
- 8 Cho MY, Kim JM, Sohn JH, Kim MJ, Kim KM, Kim WH, Kim H, Kook MC, Park do Y, Lee JH, Chang H, Jung ES, Kim HK, Jin SY, Choi JH, Gu MJ, Kim S, Kang MS, Cho CH, Park MI, Kang YK, Kim YW, Yoon SO, Bae HI, Joo M, Moon WS, Kang DY, Chang SJ. Current Trends of the Incidence and Pathological Diagnosis of Gastroenteropancreatic Neuroendocrine Tumors (GEP-NETs) in Korea 2000-2009: Multicenter Study. *Cancer Res Treat* 2012; **44**: 157-165 [PMID: 23091441 DOI: 10.4143/crt.2012.44.3.157]
- 9 Caldarella A, Crocetti E, Paci E. Distribution, incidence, and prognosis in neuroendocrine tumors: a population based study from a cancer registry. *Pathol Oncol Res* 2011; **17**: 759-763 [PMID: 21476126 DOI: 10.1007/s12253-011-9382-y]
- 10 Rindi G, Luinetti O, Cornaggia M, Capella C, Solcia E.

- Three subtypes of gastric argyrophil carcinoid and the gastric neuroendocrine carcinoma: a clinicopathologic study. *Gastroenterology* 1993; **104**: 994-1006 [PMID: 7681798]
- 11 **Nikou GC**, Angelopoulos TP. Current concepts on gastric carcinoid tumors. *Gastroenterol Res Pract* 2012; **2012**: 287825 [PMID: 23316222 DOI: 10.1155/2012/287825]
  - 12 **Basuroy R**, Srirajaskanthan R, Prachalias A, Quaglia A, Ramage JK. Review article: the investigation and management of gastric neuroendocrine tumours. *Aliment Pharmacol Ther* 2014; **39**: 1071-1084 [PMID: 24628514 DOI: 10.1111/apt.12698]
  - 13 **Li TT**, Qiu F, Qian ZR, Wan J, Qi XK, Wu BY. Classification, clinicopathologic features and treatment of gastric neuroendocrine tumors. *World J Gastroenterol* 2014; **20**: 118-125 [PMID: 24415864 DOI: 10.3748/wjg.v20.i1.118]
  - 14 **Massironi S**, Sciola V, Spampatti MP, Peracchi M, Conte D. Gastric carcinoids: between underestimation and overtreatment. *World J Gastroenterol* 2009; **15**: 2177-2183 [PMID: 19437556]
  - 15 **Zhang L**, Ozao J, Warner R, Divino C. Review of the pathogenesis, diagnosis, and management of type I gastric carcinoid tumor. *World J Surg* 2011; **35**: 1879-1886 [PMID: 21559999 DOI: 10.1007/s00268-011-1137-0]
  - 16 **Scherübl H**, Cadiot G, Jensen RT, Rösch T, Stölzel U, Klöppel G. Neuroendocrine tumors of the stomach (gastric carcinoids) are on the rise: small tumors, small problems? *Endoscopy* 2010; **42**: 664-671 [PMID: 20669078 DOI: 10.1055/s-0030-1255564]
  - 17 **Kaltsas G**, Grozinsky-Glasberg S, Alexandraki KI, Thomas D, Tsolaklis AV, Gross D, Grossman AB. Current concepts in the diagnosis and management of type 1 gastric neuroendocrine neoplasms. *Clin Endocrinol (Oxf)* 2014; **81**: 157-168 [PMID: 24750249 DOI: 10.1111/cen.12476]
  - 18 **O'Toole D**, Delle Fave G, Jensen RT. Gastric and duodenal neuroendocrine tumours. *Best Pract Res Clin Gastroenterol* 2012; **26**: 719-735 [PMID: 23582915 DOI: 10.1016/j.bpg.2013.01.002]
  - 19 **Dakin GF**, Warner RR, Pomp A, Salky B, Inabnet WB. Presentation, treatment, and outcome of type 1 gastric carcinoid tumors. *J Surg Oncol* 2006; **93**: 368-372 [PMID: 16550587]
  - 20 **Meko JB**, Norton JA. Management of patients with Zollinger-Ellison syndrome. *Annu Rev Med* 1995; **46**: 395-411 [PMID: 7598474]
  - 21 **Chittajulla RS**, Ardill JES, McColl KEL. The degree of hypergastrinemia induced by *Helicobacter pylori* is the same in duodenal ulcer patients and asymptomatic volunteers. *Eur J Gastroenterol* 1992; **4**: 49-53
  - 22 **Smith JT**, Pounder RE, Nwokolo CU, Lanzon-Miller S, Evans DG, Graham DY, Evans DJ. Inappropriate hypergastrinaemia in asymptomatic healthy subjects infected with *Helicobacter pylori*. *Gut* 1990; **31**: 522-525 [PMID: 2351302]
  - 23 **El-Omar EM**, Oien K, El-Nujumi A, Gillen D, Wirz A, Dahill S, Williams C, Ardill JE, McColl KE. *Helicobacter pylori* infection and chronic gastric acid hyposecretion. *Gastroenterology* 1997; **113**: 15-24 [PMID: 9207257]
  - 24 **Faller G**, Steininger H, Kränzlein J, Maul H, Kerkau T, Hensen J, Hahn EG, Kirchner T. Antigastric autoantibodies in *Helicobacter pylori* infection: implications of histological and clinical parameters of gastritis. *Gut* 1997; **41**: 619-623 [PMID: 9414967]
  - 25 **Claeys D**, Faller G, Appelmelk BJ, Negrini R, Kirchner T. The gastric H<sup>+</sup>,K<sup>+</sup>-ATPase is a major autoantigen in chronic *Helicobacter pylori* gastritis with body mucosa atrophy. *Gastroenterology* 1998; **115**: 340-347 [PMID: 9679039]
  - 26 **Negrini R**, Savio A, Poesi C, Appelmelk BJ, Buffoli F, Paterlini A, Cesari P, Graffeo M, Vaira D, Franzin G. Antigenic mimicry between *Helicobacter pylori* and gastric mucosa in the pathogenesis of body atrophic gastritis. *Gastroenterology* 1996; **111**: 655-665 [PMID: 8780570]
  - 27 **Kidd M**, Miu K, Tang LH, Perez-Perez GI, Blaser MJ, Sandor A, Modlin IM. *Helicobacter pylori* lipopolysaccharide stimulates histamine release and DNA synthesis in rat enterochromaffin-like cells. *Gastroenterology* 1997; **113**: 1110-1117 [PMID: 9322505]
  - 28 **Solcia E**, Rindi G, Fiocca R, Villani L, Buffà R, Ambrosiani L, Capella C. Distinct patterns of chronic gastritis associated with carcinoid and cancer and their role in tumorigenesis. *Yale J Biol Med* 1992; **65**: 793-804; discussion 827-829 [PMID: 1341079]
  - 29 **Sato Y**, Iwafuchi M, Ueki J, Yoshimura A, Mochizuki T, Motoyama H, Sugimura K, Honma T, Narisawa R, Ichida T, Asakura H, Van Thiel DH. Gastric carcinoid tumors without autoimmune gastritis in Japan: a relationship with *Helicobacter pylori* infection. *Dig Dis Sci* 2002; **47**: 579-585 [PMID: 11911346]
  - 30 **Higham AD**, Bishop LA, Dimaline R, Blackmore CG, Dobbins AC, Varro A, Thompson DG, Dockray GJ. Mutations of RegIalpha are associated with enterochromaffin-like cell tumor development in patients with hypergastrinemia. *Gastroenterology* 1999; **116**: 1310-1318 [PMID: 10348814]
  - 31 **Pritchard DM**, Berry D, Przemeck SM, Campbell F, Edwards SW, Varro A. Gastrin increases mcl-1 expression in type I gastric carcinoid tumors and a gastric epithelial cell line that expresses the CCK-2 receptor. *Am J Physiol Gastrointest Liver Physiol* 2008; **295**: G798-G805 [PMID: 18719002 DOI: 10.1152/ajpgi.00015.2008]
  - 32 **D'Adda T**, Keller G, Bordi C, Höfler H. Loss of heterozygosity in 11q13-14 regions in gastric neuroendocrine tumors not associated with multiple endocrine neoplasia type 1 syndrome. *Lab Invest* 1999; **79**: 671-677 [PMID: 10378509]
  - 33 **Bakke I**, Qvigestad G, Brenna E, Sandvik AK, Waldum HL. Gastrin has a specific proliferative effect on the rat enterochromaffin-like cell, but not on the parietal cell: a study by elutriation centrifugation. *Acta Physiol Scand* 2000; **169**: 29-37 [PMID: 10759608]
  - 34 **Larsson H**, Carlsson E, Mattsson H, Lundell L, Sundler F, Sundell G, Wallmark B, Watanabe T, Håkanson R. Plasma gastrin and gastric enterochromaffinlike cell activation and proliferation. Studies with omeprazole and ranitidine in intact and antrectomized rats. *Gastroenterology* 1986; **90**: 391-399 [PMID: 3510144]
  - 35 **Dawson R**, Manson JM. Omeprazole in oesophageal reflux disease. *Lancet* 2000; **356**: 1770-1771 [PMID: 11095286]
  - 36 **Haga Y**, Nakatsura T, Shibata Y, Sameshima H, Nakamura Y, Tanimura M, Ogawa M. Human gastric carcinoid detected during long-term antiulcer therapy of H2 receptor antagonist and proton pump inhibitor. *Dig Dis Sci* 1998; **43**: 253-257 [PMID: 9512115]
  - 37 **Jianu CS**, Fossmark R, Viset T, Qvigestad G, Sørdal O, Mårvik R, Waldum HL. Gastric carcinoids after long-term use of a proton pump inhibitor. *Aliment Pharmacol Ther* 2012; **36**: 644-649 [PMID: 22861200 DOI: 10.1111/apt.12012]
  - 38 **Food and Drug Administration**. FDA Background. Omeprazole Magensium (Prilosec 1 TM) Astra Zeneca with Proctor and Gamble. For the Joint Meeting of the Nonprescription Drugs Advisory Committee and the Gastrointestinal Drugs Advisory Committee. On October 20, 2000
  - 39 **Ravizza D**, Fiori G, Trovato C, Fazio N, Bonomo G, Luca F, Bodei L, Pelosi G, Tamayo D, Crosta C. Long-term endoscopic and clinical follow-up of untreated type 1 gastric neuroendocrine tumours. *Dig Liver Dis* 2007; **39**: 537-543 [PMID: 17433795]
  - 40 **Borch K**, Åhrén B, Ahlman H, Falkmer S, Granérus G, Grmelius L. Gastric carcinoids: biologic behavior and prognosis after differentiated treatment in relation to type. *Ann Surg* 2005; **242**: 64-73 [PMID: 15973103]
  - 41 **Granberg D**, Wilander E, Stridsberg M, Granerus G, Skogseid B, Oberg K. Clinical symptoms, hormone profiles, treatment, and prognosis in patients with gastric carcinoids. *Gut* 1998; **43**: 223-228 [PMID: 10189848]
  - 42 **Soykan I**, Yakut M, Keskin O, Bektaş M. Clinical profiles, endoscopic and laboratory features and associated factors in patients with autoimmune gastritis. *Digestion* 2012; **86**: 20-26 [PMID: 22710370 DOI: 10.1159/000338295]
  - 43 **De Block CE**, De Leeuw IH, Van Gaal LF. Autoimmune gastritis in type 1 diabetes: a clinically oriented review. *J Clin Endocrinol Metab* 2008; **93**: 363-371 [PMID: 18029461]
  - 44 **Lam-Tse WK**, Batstra MR, Koeleman BP, Roep BO, Bruining MG, Aanstoot HJ, Drexhage HA. The association between autoimmune thyroiditis, autoimmune gastritis and type 1 diabetes. *Pediatr Endocrinol Rev* 2003; **1**: 22-37 [PMID: 16437010]



- 45 **Mörk H**, Jakob F, al-Taie O, Gassel AM, Scheurlen M. Primary biliary cirrhosis and gastric carcinoid: a rare association? *J Clin Gastroenterol* 1997; **24**: 270-273 [PMID: 9252858]
- 46 **Samloff IM**, Varis K, Ihama K, Siurala M, Rotter JJ. Relationships among serum pepsinogen I, serum pepsinogen II, and gastric mucosal histology. A study in relatives of patients with pernicious anemia. *Gastroenterology* 1982; **83**: 204-209 [PMID: 7084603]
- 47 **Ichikawa J**, Tanabe S, Koizumi W, Kida Y, Imaizumi H, Kida M, Saigenji K, Mitomi H. Endoscopic mucosal resection in the management of gastric carcinoid tumors. *Endoscopy* 2003; **35**: 203-206 [PMID: 12584637]
- 48 **Singh R**, Yao K, Anagnostopoulos G, Kaye P, Ragunath K. Microcarcinoid tumor diagnosed with high-resolution magnification endoscopy and narrow band imaging. *Endoscopy* 2008; **40** Suppl 2: E12 [PMID: 18278715 DOI: 10.1055/s-2007-995393]
- 49 **Karaca C**, Turner BG, Cizginer S, Forcione D, Brugge W. Accuracy of EUS in the evaluation of small gastric subepithelial lesions. *Gastrointest Endosc* 2010; **71**: 722-727 [PMID: 20171632]
- 50 **Kojima T**, Takahashi H, Parra-Blanco A, Kohsen K, Fujita R. Diagnosis of submucosal tumor of the upper GI tract by endoscopic resection. *Gastrointest Endosc* 1999; **50**: 516-522 [PMID: 10502173]
- 51 **Delle Fave G**, Kwekkeboom DJ, Van Cutsem E, Rindi G, Kos-Kudla B, Knigge U, Sasano H, Tomassetti P, Salazar R, Ruszniewski P. ENETS Consensus Guidelines for the management of patients with gastroduodenal neoplasms. *Neuroendocrinology* 2012; **95**: 74-87 [PMID: 22262004 DOI: 10.1159/000335595]
- 52 **Rindi G**, Klöppel G, Alhman H, Caplin M, Couvelard A, de Herder WW, Eriksson B, Falchetti A, Falconi M, Komminoth P, Körner M, Lopes JM, McNicol AM, Nilsson O, Perren A, Scarpa A, Scoazec JY, Wiedenmann B. TNM staging of foregut (neuro)endocrine tumors: a consensus proposal including a grading system. *Virchows Arch* 2006; **449**: 395-401 [PMID: 16967267]
- 53 **Rindi G**, Arnold R, Bosman FT, Capella C, Klimstra DS, Klöppel G, Komminoth P, Solcia E. Nomenclature and classification of neuroendocrine neoplasms of the digestive system. In: WHO Classification of Tumours of the Digestive System, 4th ed. Lyon: International Agency for Research on Cancer (IARC), 2010: 13-14
- 54 **Bushnell DL**, Baum RP. Standard imaging techniques for neuroendocrine tumors. *Endocrinol Metab Clin North Am* 2011; **40**: 153-62, ix [PMID: 21349416 DOI: 10.1016/j.ecl.2010.12.002]
- 55 **Gibril F**, Reynolds JC, Lubensky IA, Roy PK, Peghini PL, Doppman JL, Jensen RT. Ability of somatostatin receptor scintigraphy to identify patients with gastric carcinoids: a prospective study. *J Nucl Med* 2000; **41**: 1646-1656 [PMID: 11037994]
- 56 **Kulke MH**, Benson AB, Bergsland E, Berlin JD, Blaszkowsky LS, Choti MA, Clark OH, Doherty GM, Eason J, Emerson L, Engstrom PF, Goldner WS, Heslin MJ, Kandeel F, Kunz PL, Kuvshinov BW, Moley JF, Pillarisetty VG, Saltz L, Schteingart DE, Shah MH, Shibata S, Strosberg JR, Vauthey JN, White R, Yao JC, Freedman-Cass DA, Dwyer MA. Neuroendocrine tumors. *J Natl Compr Canc Netw* 2012; **10**: 724-764 [PMID: 22679117]
- 57 **Sato Y**, Takeuchi M, Hashimoto S, Mizuno K, Kobayashi M, Iwafuchi M, Narisawa R, Aoyagi Y. Usefulness of endoscopic submucosal dissection for type I gastric carcinoid tumors compared with endoscopic mucosal resection. *Hepatogastroenterology* 2013; **60**: 1524-1529 [PMID: 23933946 DOI: 10.5754/hge121185]
- 58 **Kim HH**, Kim GH, Kim JH, Choi MG, Song GA, Kim SE. The efficacy of endoscopic submucosal dissection of type I gastric carcinoid tumors compared with conventional endoscopic mucosal resection. *Gastroenterol Res Pract* 2014; **2014**: 253860 [PMID: 24693280 DOI: 10.1155/2014/253860]
- 59 **Gaddy RA**, Strong VE, Coit D, Allen PJ, Gerdes H, Shia J, Klimstra DS, Brennan MF, Tang LH. Defining surgical indications for type I gastric carcinoid tumor. *Ann Surg Oncol* 2009; **16**: 3154-3160 [PMID: 19727959 DOI: 10.1245/s10434-009-0687-y]
- 60 **Thomas D**, Tsolakis AV, Grozinsky-Glasberg S, Fraenkel M, Alexandraki K, Sougioultzis S, Gross DJ, Kaltsas G. Long-term follow-up of a large series of patients with type I gastric carcinoid tumors: data from a multicenter study. *Eur J Endocrinol* 2013; **168**: 185-193 [PMID: 23132699 DOI: 10.1530/EJE-12-0836]
- 61 **Grozinsky-Glasberg S**, Kaltsas G, Gur C, Gal E, Thomas D, Fichman S, Alexandraki K, Barak D, Glaser B, Shimon I, Gross DJ. Long-acting somatostatin analogues are an effective treatment for type I gastric carcinoid tumours. *Eur J Endocrinol* 2008; **159**: 475-482 [PMID: 18662970 DOI: 10.1530/EJE-08-0420]
- 62 **Campana D**, Nori F, Pezzilli R, Piscitelli L, Santini D, Brocchi E, Corinaldesi R, Tomassetti P. Gastric endocrine tumors type I: treatment with long-acting somatostatin analogs. *Endocr Relat Cancer* 2008; **15**: 337-342 [PMID: 18310299 DOI: 10.1677/ERC-07-0251]
- 63 **Jianu CS**, Fossmark R, Syversen U, Hauso Ø, Fykse V, Waldum HL. Five-year follow-up of patients treated for 1 year with octreotide long-acting release for enterochromaffin-like cell carcinoids. *Scand J Gastroenterol* 2011; **46**: 456-463 [PMID: 21133821 DOI: 10.3109/00365521.2010.539255]
- 64 **Fossmark R**, Sørvald Ø, Jianu CS, Qvigstad G, Nordrum IS, Boyce M, Waldum HL. Treatment of gastric carcinoids type I with the gastrin receptor antagonist netazepide (YF476) results in regression of tumours and normalisation of serum chromogranin A. *Aliment Pharmacol Ther* 2012; **36**: 1067-1075 [PMID: 23072686 DOI: 10.1111/apt.12090]
- 65 **Sato Y**, Imamura H, Kaizaki Y, Koizumi W, Ishido K, Kurahara K, Suzuki H, Fujisaki J, Hirakawa K, Hosokawa O, Ito M, Kaminishi M, Furuta T, Chiba T, Haruma K. Management and clinical outcomes of type I gastric carcinoid patients: retrospective, multicenter study in Japan. *Dig Endosc* 2014; **26**: 377-384 [PMID: 24188531 DOI: 10.1111/den.12197]
- 66 **Hosokawa O**, Kaizaki Y, Hattori M, Douden K, Hayashi H, Morishita M, Ohta K. Long-term follow up of patients with multiple gastric carcinoids associated with type A gastritis. *Gastric Cancer* 2005; **8**: 42-46 [PMID: 15747174]
- 67 **Kim BS**, Oh ST, Yook JH, Kim KC, Kim MG, Jeong JW, Kim BS. Typical carcinoids and neuroendocrine carcinomas of the stomach: differing clinical courses and prognoses. *Am J Surg* 2010; **200**: 328-333 [PMID: 20385369 DOI: 10.1016/j.amjsurg.2009.10.028]
- 68 **La Rosa S**, Inzani F, Vanoli A, Klersy C, Dainese L, Rindi G, Capella C, Bordini C, Solcia E. Histologic characterization and improved prognostic evaluation of 209 gastric neuroendocrine neoplasms. *Hum Pathol* 2011; **42**: 1373-1384 [PMID: 21531442 DOI: 10.1016/j.humpath.2011.01.018]
- 69 **Schindl M**, Kaserer K, Niederle B. Treatment of gastric neuroendocrine tumors: the necessity of a type-adapted treatment. *Arch Surg* 2001; **136**: 49-54 [PMID: 11146777]
- 70 **Gough DB**, Thompson GB, Crotty TB, Donohue JH, Kvols LK, Carney JA, Grant CS, Nagorney DM. Diverse clinical and pathologic features of gastric carcinoid and the relevance of hypergastrinemia. *World J Surg* 1994; **18**: 473-479; discussion 479-480 [PMID: 7725731]
- 71 **Merola E**, Sbrozzi-Vanni A, Panzuto F, D'Ambra G, Di Giulio E, Pillozzi E, Capurso G, Lahner E, Bordini C, Annibale B, Delle Fave G. Type I gastric carcinoids: a prospective study on endoscopic management and recurrence rate. *Neuroendocrinology* 2012; **95**: 207-213 [PMID: 21811050 DOI: 10.1159/000329043]
- 72 **Vannella L**, Sbrozzi-Vanni A, Lahner E, Bordini C, Pillozzi E, Corleto VD, Osborn JF, Delle Fave G, Annibale B. Development of type I gastric carcinoid in patients with chronic atrophic gastritis. *Aliment Pharmacol Ther* 2011; **33**: 1361-1369 [PMID: 21492197 DOI: 10.1111/j.1365-2036.2011.04659.x]
- 73 **Uygun A**, Kadayifci A, Polat Z, Yilmaz K, Gunal A, Demir H, Bagci S. Long-term results of endoscopic resection for type I gastric neuroendocrine tumors. *J Surg Oncol* 2014; **109**: 71-74 [PMID: 24165913 DOI: 10.1002/jso.23477]
- 74 **Rappel S**, Altendorf-Hofmann A, Stolte M. Prognosis of gastric carcinoid tumours. *Digestion* 1995; **56**: 455-462 [PMID: 8536814]
- 75 **Saund MS**, Al Natour RH, Sharma AM, Huang Q, Boosalis VA, Gold JS. Tumor size and depth predict rate of lymph node metastasis and utilization of lymph node sampling in surgically managed gastric carcinoids. *Ann Surg Oncol* 2011; **18**: 2826-2832

[PMID: 21455598 DOI: 10.1245/s10434-011-1652-0]

- 76 **Grozinsky-Glasberg S**, Thomas D, Strosberg JR, Pape UF, Felder S, Tsolakis AV, Alexandraki KI, Fraenkel M, Saiegh L, Reissman

P, Kaltsas G, Gross DJ. Metastatic type 1 gastric carcinoid: a real threat or just a myth? *World J Gastroenterol* 2013; **19**: 8687-8695 [PMID: 24379587 DOI: 10.3748/wjg.v19.i46.8687]

**P- Reviewer:** Amornyotin S, Declich P **S- Editor:** Ji FF  
**L- Editor:** A **E- Editor:** Wu HL







Published by **Baishideng Publishing Group Inc**

8226 Regency Drive, Pleasanton, CA 94588, USA

Telephone: +1-925-223-8242

Fax: +1-925-223-8243

E-mail: [bpgoffice@wjgnet.com](mailto:bpgoffice@wjgnet.com)

Help Desk: <http://www.wjgnet.com/esps/helpdesk.aspx>

<http://www.wjgnet.com>

