

## Format for ANSWERING REVIEWERS



8<sup>th</sup> January 2015

Dear Editor,

Please find enclosed the edited manuscript in Word format (file name: 2429-review.doc).

**Title:** First Jejunal Artery, an alternative graft for right hepatic artery reconstruction –A case report-

**Author:** Bibek Aryal, Teruo Komokata, Jun Kadono, Hiroyuki Motodaka, Tetsuya Ueno, Akira Furoi, Yutaka Imoto

**Name of Journal:** *World Journal of Hepatology*

**ESPS Manuscript NO:** 15928

The manuscript has been improved according to the suggestions of reviewers:

1 Format has been updated

2 Revision has been made according to the suggestions of the reviewer. Revised texts have been highlighted with blue color.

(Response to reviewer 1)

- (1) Thank you for your insightful comments and consideration for publication. As in the figure 2 the CT itself didn't reveal any signs of right hepatic artery invasion (all the imaging reports were confirmed by the expert radiologists), however in our case intraoperatively the tumor was evident on gross inspection. The intraoperative photograph has been sent with the letter as a reference. I agree the citation of figure may have led the confusion previously, which is now properly arranged in the text.
- (2) Intraoperative blood loss and time of reconstruction has been stated in the text.
- (3) As mentioned in the case summary we had no long-term complication related to the graft; the graft had been patent for more than 2 years (text in orange color).
- (4) RGEPA and GSV have been abbreviated.
- (5) The margin status of RHA has been mentioned.
- (5) As suggested, the possible indications of first jejunal artery have been summarized in the 2<sup>nd</sup> last paragraph of the discussion

Response to reviewer 2

Thank you for considering our paper for publication.  
As suggested minor grammatical or language errors have been corrected.

3 References and typesetting were corrected

Reference for the response no: 1

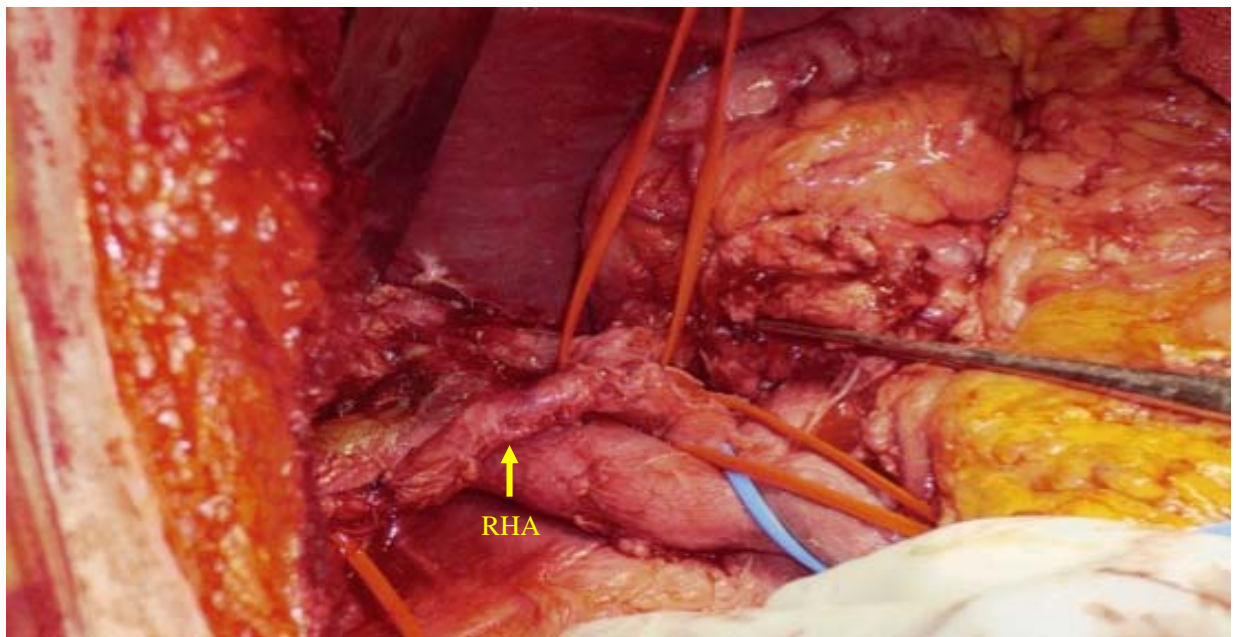


Figure : Intra-operative finding of tumor invasion to RHA