

Molecular basis of cleft palates in mice

Noriko Funato, Masataka Nakamura, Hiromi Yanagisawa

Noriko Funato, Masataka Nakamura, Research Center for Medical and Dental Sciences, Tokyo Medical and Dental University, Tokyo 113-8510, Japan

Hiromi Yanagisawa, Department of Molecular Biology, University of Texas Southwestern Medical Center, Dallas, TX 75390-9148, United States

Hiromi Yanagisawa, Life Science Center of Tsukuba Advanced Research Alliance, University of Tsukuba, Tsukuba, Ibaraki 305-8577, Japan

Author contributions: Funato N contributed to the conception and design of the manuscript, to the data analysis, and drafted the manuscript; Nakamura M and Yanagisawa H contributed to the interpretation of data, and revised the manuscript.

Supported by The Japan Society for the Promotion of Science (JSPS) through KAKENHI grants 25670774 and 15K11004, awarded to Funato N.

Conflict-of-interest statement: The authors declare no conflicts of interest.

Open-Access: This article is an open-access article which was selected by an in-house editor and fully peer-reviewed by external reviewers. It is distributed in accordance with the Creative Commons Attribution Non Commercial (CC BY-NC 4.0) license, which permits others to distribute, remix, adapt, build upon this work non-commercially, and license their derivative works on different terms, provided the original work is properly cited and the use is non-commercial. See: <http://creativecommons.org/licenses/by-nc/4.0/>

Correspondence to: Noriko Funato, DDS, PhD, Research Center for Medical and Dental Sciences, Tokyo Medical and Dental University, 1-5-45 Yushima, Bunkyo-ku, Tokyo 113-8510, Japan. noriko-funato@umin.ac.jp
Telephone: +81-3-58035796
Fax: +81-3-58030203

Received: April 21, 2015

Peer-review started: April 22, 2015

First decision: May 13, 2015

Revised: May 26, 2015

Accepted: July 11, 2015

Article in press: July 14, 2015

Published online: August 26, 2015

Abstract

Cleft palate, including complete or incomplete cleft palates, soft palate clefts, and submucosal cleft palates, is the most frequent congenital craniofacial anomaly in humans. Multifactorial conditions, including genetic and environmental factors, induce the formation of cleft palates. The process of palatogenesis is temporospatially regulated by transcription factors, growth factors, extracellular matrix proteins, and membranous molecules; a single ablation of these molecules can result in a cleft palate *in vivo*. Studies on knockout mice were reviewed in order to identify genetic errors that lead to cleft palates. In this review, we systematically describe these mutant mice and discuss the molecular mechanisms of palatogenesis.

Key words: Tbx1; Submucosal cleft palate; Incomplete cleft palate; Palatal shelf; Palatogenesis; Knockout mice

© **The Author(s) 2015.** Published by Baishideng Publishing Group Inc. All rights reserved.

Core tip: Cleft lip and/or palate is one of the most frequent congenital craniofacial anomalies observed. Multifactorial conditions, including genetic and environmental factors, induce the formation of cleft palates. We screened knockout mice with cleft palate phenotypes and observed approximately 180 mice with the anomaly. In order to understand the molecular regulatory mechanisms of palatogenesis and to identify genetic errors that lead to cleft palates, we aimed to review studies performed using knockout mice with cleft palates.

Funato N, Nakamura M, Yanagisawa H. Molecular basis of cleft palates in mice. *World J Biol Chem* 2015; 6(3): 121-138 Available from: URL: <http://www.wjgnet.com/1949-8454/full/v6/i3/121.htm> DOI: <http://dx.doi.org/10.4331/wjbc.v6.i3.121>

INTRODUCTION

Cleft lip and/or palate (CL/P) is the most frequent congenital craniofacial anomaly observed in humans, with an incidence of 1 per 700 births worldwide^[1]. Furthermore, 55% of the patients with CL/P are reported to have a multiple malformation syndrome^[2]. CL/P involves a multifactorial etiology, both genetic and environmental. Teratogens that cause CL/P in humans include common environmental exposures, such as alcohol, smoking, infections, dioxin, estrogen, retinoic acid, and altitude (reviewed by Murray^[1]). The offspring of parents with CL/P present a higher incidence of CL/P than those without a family history^[1]. Gene-environment interactions for non-syndromic CL/P have also been reported^[1]. Cleft palate (CP) cases include complete CP, incomplete CP, and soft palate clefts. The mildest form of cleft palates is the soft palate cleft or bifid uvula because the initial palatal fusion occurs in the anterior region of secondary palatal shelves. Incomplete CP and soft palate clefts can manifest together with submucosal CP. This review focuses on studies performed using knockout mice with CP, aiming to clarify the molecular regulatory mechanisms of palatogenesis and to identify genetic errors underlying mammalian cleft palates.

MAMMALIAN PALATOGENESIS

The palate is formed with the primary and secondary palate. The primary palate is derived from the frontonasal prominence and becomes a small anterior part of the adult hard palate. The secondary palatal shelves extend bilaterally from the internal aspects of the maxillary prominences and will become the adult hard and soft palates. The process of palatogenesis consists of several stages: palatal shelf formation, elevation, and midline fusion of the palatal shelves (Figure 1). The secondary palatal shelves develop between embryonic day (E) 11.5 and 12.5 in the mouse embryo (Figure 1A). At E13.5, the palatal shelves grow downward on each side of the tongue (Figure 1B). As the jaws develop, the tongue descends and the palatal shelves elevate to a horizontal position above the dorsum of the tongue (E14). Continuing their growth, the bilateral palatal shelves meet at the midline and fuse between E14.5 and E15.5 (Figure 1C).

The palatal shelves are composed of the neural crest-derived mesenchyme and ectoderm-derived epithelia, which cover the palatal mesenchyme (Figure 1D). Both elevation and fusion of the secondary palatal shelves occur in the midline from anterior to posterior. The secondary palatal shelves also fuse with the primary palate, separating the oral and nasal cavities. The anterior two-thirds of the palate forms the hard palate with neural crest-derived palatal bones (Figure 2A). The posterior one-third of the palate forms the bone-free soft palate and is involved in the

palatopharyngeal sealing. Disruption at any stage of the formation, elevation, growth, or fusion of the secondary palatal shelves results in CP^[3].

MOUSE MODELS FOR STUDYING THE MOLECULAR MECHANISMS OF PALATAL DEVELOPMENT

Major advances have been achieved regarding the molecular mechanisms that regulate palatal development using genetically engineered mice. Deletions in many genes of mice result in CP and the most frequent phenotype seen is complete CP (Figure 2B). Uniquely, *Tbx1*^{-/-} mice present various phenotypes of CP^[4], including complete CP (Figure 2B), incomplete CP (Figure 2C), and anterior CP (Figure 2D). Bone staining showed that some mice potentially had a submucosal CP (Figure 2G). These observations are in agreement with various CP phenotypes in humans.

In order to elucidate the molecular pathogenesis of CL/P, we conducted a literature search on PubMed (<http://www.ncbi.nlm.nih.gov/pubmed>) and the Mouse Genome Informatics (MGI) from the Jackson Laboratory (<http://www.informatics.jax.org>). The search was limited to knockout mice with CP and excluded the teratogen-induced CP (Table 1). We also investigated diseases/syndromes using the Online Mendelian Inheritance in Man (OMIM) (<http://omim.org>). Not all the molecules involved in cleft palates in mice are correlated to CL/P in human (Table 1). When genes in Table 1 were analyzed by biological function using BioCarta (<http://www.biocarta.com>) and the Kyoto Encyclopedia of Genes and Genomes (KEGG) Pathway Database (<http://www.genome.jp/kegg/pathway.html>), the transforming growth factor (TGF), hedgehog, Wnt, fibroblast growth factor (FGF), and mitogen-activated protein kinase (MAPK) signaling pathways were found to be critical in palatogenesis (Table 2). When genes were analyzed by molecular function using the PANTHER (Protein ANALysis THrough Evolutionary Relationships) database (<http://pantherdb.org>)^[5], the most significantly enriched molecular function was the "transcription factor", especially the "homeobox transcription factors" (Table 2 and Figure 3).

To analyze mutant mice with cleft palates, the defects in palatal shelf development were divided into the following six categories (Table 3), which were modified from a previously published classification^[3]. The first category is the failure of the palatal shelf formation. The gene mutations affect the initial development of the palatal shelf. The second one is the abnormal fusion of the palatal shelves and the mandible or tongue. Oral fusions between the palatal shelves and the tongue or mandible are rare. In *Tbx1* (T-box 1) knockout mice, the posterior part of the palatal shelves fuse to the mandible, inhibiting the

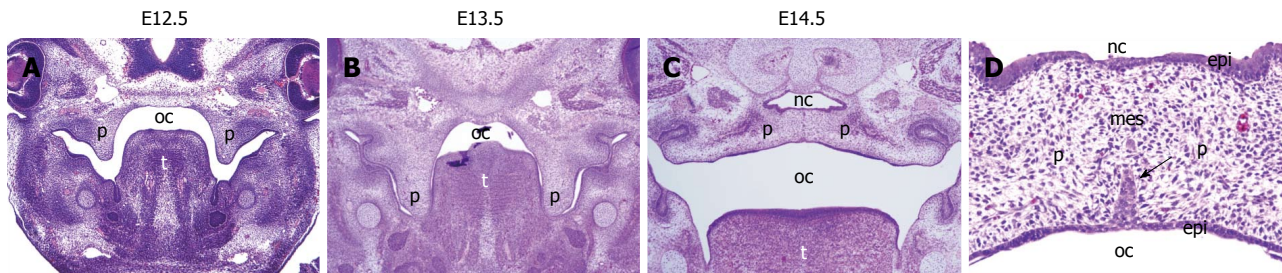


Figure 1 Palatogenesis in mice. Hematoxylin and eosin staining of coronal sections of the head of a wild-type mouse at embryonic day (E) 12.5 (A), E13.5 (B), and E14.5 (C, D). A: Mouse palatal shelves (p) develop from the maxillary prominences; B: By E13.5, the palatal shelves grow downward on each side of the tongue (t); C and D: At E14.5, the palatal shelves face each other along the midline above the tongue and fuse, separating the oral cavity (oc) from the nasal cavity (nc). The arrow in (D) indicates the medial edge epithelial (MEE) cells that constitute the midline epithelial seam. All animal experimental procedures were reviewed and approved by the Institutional Animal Care and Use Committees of the University of Texas Southwestern Medical Center and Tokyo Medical and Dental University. mes: Mesenchyme; epi: Epithelium.

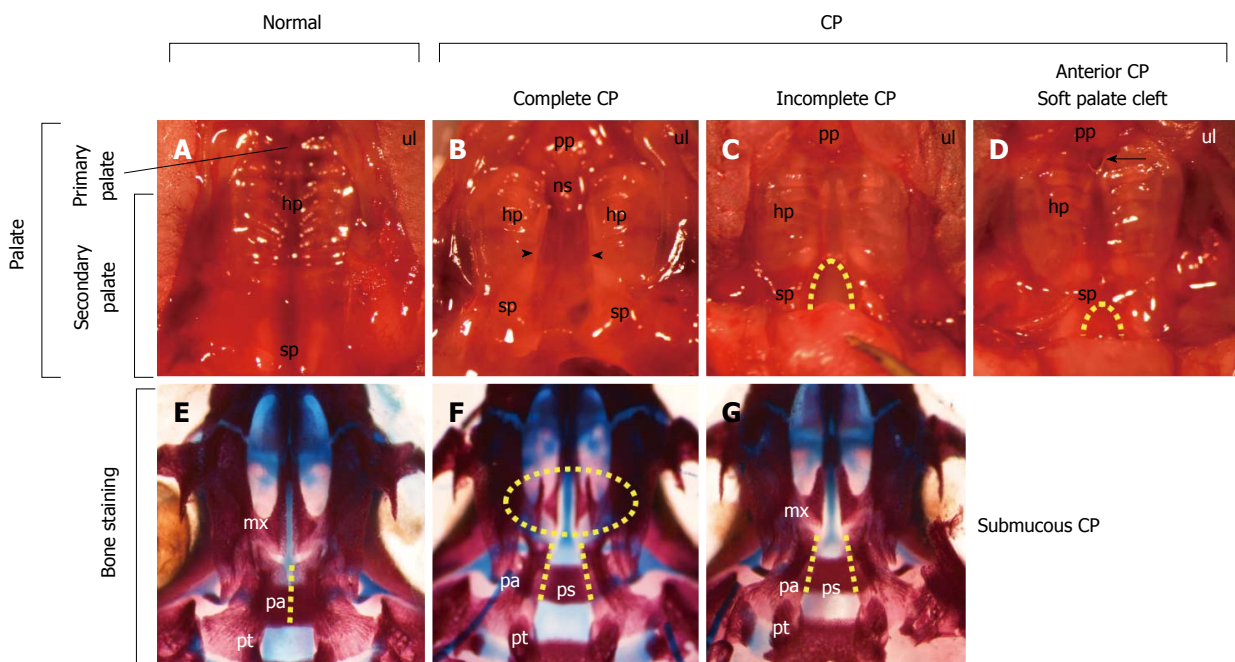


Figure 2 View of the palate from wild-type and *Tbx1*^{-/-} mice with cleft palates. A-D: Ventral view of the maxilla of newborn wild-type (A) and *Tbx1*^{-/-} mice with cleft palates (B-D). The palate consists of the primary palate (pp) and the secondary palate (sp), which consists of a hard palate (hp) and a soft palate (sp) (A). *Tbx1*^{-/-} mice show complete cleft palate (CP) (arrowheads in B), incomplete CP (dashed line in C), and soft palate clefts associated with anterior CP (dashed line in D). An anterior CP (an arrow in D) is present at the junction between the primary palate and secondary palate, while the posterior palate remains fused; E-G: Ventral view of the cranial base of newborn wild-type (E) and *Tbx1*^{-/-} mice (F, G) stained with alizarin red for mineralized bone and alcian blue for cartilage. Fusion of the bilateral palatal bones (pa) observed in the wild-type (dashed line in E) is absent in *Tbx1*^{-/-} mice (dashed lines in F, G). The palatal shelves in the maxilla (mx) of *Tbx1*^{-/-} mice with complete CP (oval dashed line in F) failed to grow toward the midline. Note the visible presphenoid bone (ps) associated with CP (F, G). Modified and used with permission from Funato *et al.*⁴¹. ns: Nasal septum; pt: Pterygoid bone.

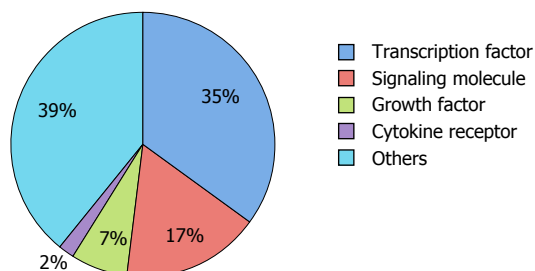


Figure 3 Gene ontology analysis of genes associated with cleft palate in mice. Gene ontology analysis of genes associated with cleft palate in mice was performed using the PANTHER classification system (<http://pantherdb.org>). The most significantly enriched molecular function was the "transcription factor" ($P = 1.2 \times 10^{-12}$). A P value less than 0.05 was considered statistically significant.

elevation of the palatal shelves^[4]. The third category is the failed or delayed palatal shelf elevation. Ablation of *Pax9* (paired box gene 9), *Pitx1* (paired-like homeodomain 1), *Gli2* (GLI family zinc finger 2), or *Osr2* (Odd-skipped related transcription factor 2) in the palatal mesenchyme results in the failed palatal shelf elevation^[6-9], suggesting crucial roles for these transcription factors in controlling the mesenchymal cells during palatal shelf elevation. The fourth one is the failure of the palatal shelf development after elevation. The loss of *Msx1* (msh homeobox 1) and *Lhx8* (LIM homeobox gene 8) and the conditional ablation of *Tgfb β 2* (transforming growth factor,

Table 1 Molecules involved in cleft palate in mice

Knockout mice with cleft palates			Humans		
Gene/category	Protein	Ref.	OMIM	Syndrome	CL/P
Growth factors, antagonist, and receptors					
<i>Acr1/Alk2</i> (<i>Wnt1-Cre</i> -mediated ablation)	Activin A receptor, type I	[33]	¹ 102576	Fibrodysplasia ossificans progressiva	nr
<i>Acr2a</i>	Activin A receptor, type II A	[34]	¹ 102581	nr	nr
<i>Bmp4</i>	Bone morphogenetic protein 4	[35]	¹ 112262	Microphthalmia, syndromic 6 Orofacial cleft 11	r
<i>Bmp7</i>	Bone morphogenetic protein 7	[36]	¹ 112267	nr	nr
<i>Bmpr1a/Alk3</i> (<i>Nestin-Cre</i> -mediated ablation)	Bone morphogenetic protein receptor, type I A	[35]	¹ 601299	Juvenile polyposis syndrome, Polyposis syndrome	nr
<i>Chrd</i>	Chordin	[37]	¹ 603475	nr	nr
<i>Ctgf</i>	Connective tissue growth factor	[38]	¹ 121009	nr	nr
<i>Edn1</i>	Endothelin 1	[39]	² 131240	Auriculocondylar syndrome 3	r
<i>Egfr</i>	Epidermal growth factor receptor	[17]	¹ 131550	nr	nr
<i>Fgf9</i>	Fibroblast growth factor 9	[40]	¹ 600921	uc	nr
<i>Fgf10</i>	Fibroblast growth factor 10	[13,41]	¹ 602115	Aplasia of lacrimal and salivary glands LADD syndrome	nr
<i>Fgf18</i>	Fibroblast growth factor 18	[42,43]	¹ 603726	nr	nr
<i>Fgfr1</i>	Fibroblast growth factor receptor 1	[44]	¹ 136350	Nonsyndromic cleft lip/palate Hartsfield syndrome Hypogonadotropic hypogonadism 2 Pfeiffer syndrome Apert syndrome Crouzon syndrome Pfeiffer syndrome Saethre-Chotzen syndrome	r
<i>Fgfr2</i> (knockout) (<i>Krt14-Cre</i> -mediated ablation)	Fibroblast growth factor receptor 2	[13,45]	¹ 176943		r
<i>Fst</i>	Follistatin	[46]	¹ 136470	nr	nr
<i>Gabrb3</i>	Gamma-aminobutyric acid A receptor, beta 3	[47]	¹ 137192	Epilepsy, childhood absence, susceptibility to, 5	r
<i>Gdf11/Bmp11</i>	Growth differentiation factor 11	[48]	¹ 603936	nr	nr
<i>Gpr124</i>	G protein-coupled receptor 124	[49]	¹ 606823	nr	nr
<i>Inhba</i>	Inhibin, beta A/activin A	[50]	¹ 147290	nr	nr
<i>Pdgfc</i>	Platelet-derived growth factor C	[51]	¹ 608452	nr	r [52]
<i>Pdgfra</i> (knockout) (<i>Wnt1-Cre</i> -mediated ablation)	Platelet-derived growth factor receptor, alpha polypeptide	[53,54]	¹ 173490	Gastrointestinal stromal tumor, somatic Hypereosinophilic syndrome, idiopathic, resistant to imatinib	r
<i>Tgfb2</i>	Transforming growth factor, beta 2	[55]	¹ 190220	Loeys-Dietz syndrome, type 4	r
<i>Tgfb3</i>	Transforming growth factor, beta 3	[15,16,18]	¹ 190230	Arrhythmogenic right ventricular dysplasia 1	r
<i>Tgfb1/Alk5</i> (<i>Wnt1-Cre</i> -, and <i>Nestin-Cre</i> -mediated ablation)	Transforming growth factor, beta receptor I	[56,57]	¹ 190181	Loeys-Dietz syndrome, type 1	r
<i>Tgfb2</i> (<i>Wnt1-Cre</i> -, and <i>KRT14-Cre</i> -mediated ablation)	Transforming growth factor, beta receptor II	[12,58]	¹ 190182	Loeys-Dietz syndrome, type 2	r
<i>Vegfa</i>	Vascular endothelial growth factor A	[59]	² 192240	nr	nr
Membrane proteins					
<i>Ceacam1</i>	Carcinoembryonic antigen-related cell adhesion molecule 1	[60]	¹ 109770	nr	nr
<i>EfnA5</i>	Ephrin A5	[61]	¹ 601535	nr	nr
<i>EfnB1</i>	Ephrin B1	[62]	¹ 300035	Craniofrontonasal dysplasia	r
<i>EfnB2</i>	Ephrin B2	[63]	¹ 600527	nr	nr
<i>Fzd2</i>	Frizzled class receptor 2	[64]	¹ 600667	nr	nr
<i>Itga5</i> (knockout) (<i>Mesp1-Cre</i> -mediated ablation)	Integrin alpha 5	[65,66]	¹ 135620	nr	nr
<i>Itgb1</i> (<i>Col2a1-Cre</i> -mediated ablation)	Integrin beta 1	[67]	¹ 135630	nr	nr
<i>Itgb8</i>	Integrin beta 8	[68]	¹ 604160	nr	nr
<i>Jag1</i> (<i>Wnt1-Cre</i> -mediated ablation)	Jagged1	[69]	² 601920	Alagille syndrome	nr
<i>Jag2</i>	Jagged2	[70]	¹ 602570	nr	nr
<i>Kcnj2</i>	Potassium inwardly-rectifying channel, subfamily J, member 2	[71]	¹ 600681	Andersen syndrome Atrial fibrillation, familial, 9 Short QT syndrome 3	r

<i>Lrp6</i>	Low density lipoprotein receptor-related protein 6	[72]	¹ 603507	nr	nr
<i>Ror2</i>	Receptor tyrosine kinase-like orphan receptor 2	[73]	¹ 602337	Robinow syndrome, autosomal recessive Brachydactyly, type B1	r
<i>Ryk</i>	Receptor-like tyrosine kinase	[74]	¹ 600524	nr	nr
<i>Ryr1</i>	Ryanodine receptor 1, skeletal muscle	[75]	¹ 180901	Central core disease King-Denborough syndrome Minicore myopathy with external ophthalmoplegia	nr
<i>Sc5d/Sc5dl</i>	Sterol-C5-desaturase (fungal ERG3, delta-5-desaturase) homolog (<i>S. cerevisiae</i>)	[76]	¹ 602286	Lathosterolosis	nr
<i>Shh</i> (<i>KRT14-Cre-</i> , and <i>Sox2-Cre-</i> mediated ablation)	Sonic hedgehog	[13,77]	¹ 600725	Holoprosencephaly-3 Microphthalmia with coloboma 5 Single median maxillary central incisor	r
<i>Smo/Smoh</i> (<i>Wnt1-Cre-</i> mediated ablation)	Smoothed, frizzled class receptor	[78]	¹ 601500	Basal cell carcinoma, somatic	nr
<i>Tctn2</i>	Tectonic family member 2	[79]	¹ 613846	Meckel syndrome 8	r
<i>Wls/Gpr177</i> (<i>Wnt1-Cre-</i> mediated ablation)	Wntless homolog (<i>Drosophila</i>)	[80]	¹ 611514	nr	nr
<i>Wnt5a</i>	Wingless-type MMTV integration site family, member 5A	[81]	¹ 164975	Robinow syndrome, autosomal dominant	r
<i>Wnt9b</i> (knockout) (<i>Foxg1-Cre-</i> mediated ablation)	Wingless-type MMTV integration site family, member 9B	[82,83]	¹ 602864	nr	nr
Transcription and nucleolar factors					
<i>Alx1</i>	Aristaless-like homeobox 1	[84]	¹ 601527	Frontonasal dysplasia 3	r
<i>Alx3</i>	Aristaless-like homeobox 3	[85]	¹ 606014	Frontonasal dysplasia 1	r
<i>Alx4</i>	Aristaless-like homeobox 4	[85]	¹ 605420	Frontonasal dysplasia 2 Parietal foramina 2 Craniosynostosis 5	Cleft alae nasi
<i>Anp32b</i>	Acidic (leucine-rich) nuclear phosphoprotein 32 family, member B	[86]	nr	nr	nr
<i>Arid5</i>	AT-rich interaction domain-containing protein 5A	[87]	¹ 611583	nr	nr
<i>Asxl1</i>	Additional sex combs like 1	[88]	¹ 612990	Bohring-Opitz syndrome Myelodysplastic syndrome, somatic	r
<i>Barx1</i>	BarH-like homeobox 1	[89]	¹ 603260	nr	nr
<i>Cdc42</i> (<i>Prrx1-Cre-</i> mediated ablation)	Cell division cycle 42	[90]	¹ 116952	nr	nr
<i>Chd7</i> (heterozygotes) (<i>Wnt1-Cre-</i> mediated ablation)	Chromodomain helicase DNA binding protein 7	[91,92]	¹ 608892	CHARGE syndrome Hypogonadotropic hypogonadism 5 with or without anosmia	r
<i>Cited2</i>	CBP/p300-interacting transactivator, with Glu/Asp-rich C-terminal domain, 2	[93]	¹ 602937	Atrial septal defect 8 Ventricular septal defect 2	nr
<i>Crebbp/Cbp</i>	CREB binding protein	[94]	¹ 600140	Rubinstein-Taybi syndrome	nr
<i>Dlx1</i>	Distal-less homeobox 1	[95]	¹ 600029	nr	nr
<i>Dlx2</i>	Distal-less homeobox 2	[95]	¹ 126255	nr	nr
<i>Dlx5</i>	Distal-less homeobox 5	[96,97]	¹ 600028	Split-hand/foot malformation 1 with sensorineural hearing loss	r
<i>Dph1/Ovca1</i>	DPH1 homolog (<i>S. cerevisiae</i>)	[98]	¹ 603527	nr	nr
<i>Eya1</i>	Eyes absent 1 homolog (<i>Drosophila</i>)	[99]	¹ 601653	Branchiootic syndrome 1 Branchiootorenal syndrome 1, with or without cataracts Anterior segment anomalies with or without cataract	r
<i>Foxc2/Mfh1</i>	Forkhead box C2	[100]	¹ 602402	Lymphedema-distichiasis syndrome	r
<i>Foxd3</i> (<i>Wnt1-Cre-</i> mediated ablation)	Forkhead box D3	[101]	¹ 611539	uc	nr
<i>Foxe1/Titf2/Fkhl15</i>	Forkhead box E1	[102]	¹ 602617	Bamforth-Lazarus syndrome Nonsyndromic orofacial clefting	r
<i>Foxf2</i>	Forkhead box F2	[103]	¹ 603250	nr	nr
<i>Gbx2</i>	Gastrulation brain homeobox 2	[104]	¹ 601135	nr	nr
<i>Gli2</i>	GLI family zinc finger 2	[8]	¹ 165230	Culler-Jones syndrome Holoprosencephaly-9	r
<i>Gli3</i>	GLI family zinc finger 3	[105]	¹ 165240	Greig cephalopolysyndactyly syndrome Pallister-Hall syndrome	r

<i>Gsc</i>	Goosecoid homeobox	[106]	¹ 138890	Short stature, auditory canal atresia, mandibular hypoplasia, skeletal abnormalities	nr
<i>Hand2/dHand</i>	Heart and neural crest derivatives expressed 2	[107]	¹ 602407	nr	nr
<i>Hic1</i>	Hypermethylated in cancer 1	[108]	¹ 603825	nr	nr
<i>Hoxa2</i>	Homeobox A2	[19]	¹ 604685	Microtia with or without hearing impairment (AD)	r
				Microtia, hearing impairment, and cleft palate (AR)	
<i>Irf6</i>	Interferon regulatory factor 6	[109,110]	¹ 607199	van der Woude syndrome	r
				Orofacial cleft 6	
				Popliteal pterygium syndrome 1	
<i>Jmjd6/Ptdsr</i>	Jumonji domain containing 6	[111]	¹ 604914	nr	nr
<i>Kat6a/Moz/Myst3</i>	K (lysine) Acetyltransferase 6A	[112]	¹ 601408	nr	nr
<i>Lhx7</i>	LIM homeobox gene 7	[113]	nr	nr	nr
<i>Lhx8</i>	LIM homeobox gene 8	[11]	¹ 604425	nr	r
<i>Luzp1</i>	Leucine zipper protein 1	[114]	¹ 601422	nr	nr
<i>Mef2c</i> (<i>Wnt1-Cre</i> -mediated ablation)	MADS box transcription enhancer factor 2	[115]	¹ 600662	Chromosome 5q14.3 deletion syndrome	nr
				Mental retardation, stereotypic movements, epilepsy, and/or cerebral malformations	
<i>Meox2</i>	Mesenchyme homeobox 2	[116]	¹ 600535	nr	nr
<i>Mn1</i>	Meningioma 1	[117]	¹ 156100	Meningioma	nr
<i>Mnt</i>	Max binding protein	[118]	¹ 603039	nr	nr
<i>Msx1</i>	Msh homeobox 1	[10,23]	¹ 142983	Ectodermal dysplasia 3, Witkop type	r
				Orofacial cleft 5	
				Tooth agenesis, selective, 1, with or without orofacial cleft	
<i>Msx2</i> (missense mutation)	Msh homeobox 2	[119]	¹ 123101	Craniosynostosis, type 2	r
				Parietal foramina 1	
				Parietal foramina with cleidocranial dysplasia	
<i>Nabp2/Obfc2b/hSSB1</i>	Nucleic acid binding protein 2	[120,121]	¹ 612104	nr	nr
<i>Osr2</i>	Odd-skipped related transcription factor 2	[9]	¹ 611297	nr	r
<i>Pak1ip1</i>	PAK1 interacting protein 1	[122]	¹ 607811	nr	nr
<i>Pax9</i>	Paired box gene 9	[6]	¹ 167416	Tooth agenesis, selective, 3	nr
<i>Pbx1</i>	Pre B cell leukemia homeobox 1	[83]	¹ 176310	Leukemia, acute pre-B-cell	nr
<i>Pds5a</i>	PDS5, regulator of cohesion maintenance, homolog A (<i>S. cerevisiae</i>)	[123]	¹ 613200	nr	nr
<i>Phc1/Rae28</i>	Polyhomeotic homolog 1	[124]	¹ 602978	uc	nr
<i>Pitx1</i>	Paired-like homeodomain 1	[7,125]	¹ 602149	Clubfoot, congenital, with or without deficiency of long bones and/or mirror-image polydactyly	r
				Liebenberg syndrome	
<i>Pitx2</i>	Paired-like homeodomain 2	[126]	¹ 601542	Axenfeld-Rieger syndrome, type 1	nr
				Iridogoniodysgenesis, type 2	
				Peters anomaly	
<i>Pnn</i>	Pinin	[127]	¹ 603154	nr	nr
<i>Prdm16</i>	PR domain containing 16	[128]	¹ 605557	Cardiomyopathy, dilated, 1LL	nr
				Left ventricular noncompaction 8	
<i>Prrx1/Prx1/Mhox</i>	Paired related homeobox 1	[129]	¹ 167420	Agnathia-otocephaly complex	r
<i>Ptch1/Ptc1</i> (<i>Wnt1-Cre</i> -mediated ablation)	Patched 1	[130]	¹ 601309	Basal cell nevus syndrome (Gorlin syndrome)	r
				Holoprosencephaly type 7	
<i>Pygo2</i> (<i>CMV-Cre</i> -mediated ablation)	Pygopus 2	[131]	¹ 606903	nr	nr
<i>Rax</i>	Retina and anterior neural fold homeobox	[132]	¹ 601881	Microphthalmia, isolated 3	nr
<i>Recql4</i>	RecQ protein-like 4	[133]	¹ 603780	Baller-Gerold syndrome	r
				RAPADILINO syndrome	
				Rothmund-Thomson syndrome	
<i>Runx2</i>	Runt-related transcription factor 2	[134]	¹ 600211	Cleidocranial dysplasia	r
<i>Sall3</i>	Spalt-like transcription factor 3	[24]	¹ 605079	nr	nr
<i>Satb2</i>	SATB homeobox 2	[135,136]	¹ 608148	Glass syndrome	r
<i>Shox2</i>	Short stature homeobox 2	[22]	¹ 602504	nr	nr
<i>Sim2</i>	Single-minded family bHLH transcription factor 2	[137]	¹ 600892	nr	nr

<i>Smad4</i> (<i>Osr2-Cre</i> -mediated ablation)	SMAD family member 4	[138]	¹ 600993	Juvenile polyposis/hereditary hemorrhagic telangiectasia syndrome Myhre syndrome	nr
<i>Smad7</i>	SMAD family member 7	[139]	¹ 602932	uc	nr
<i>Snai2</i>	Snail family zinc finger 2	[140]	¹ 602150	Piebaldism	nr
<i>Sox5</i>	SRY (sex determining region Y)-box 5	[141]	¹ 604975	Waardenburg syndrome, type 2D	nr
<i>Sox9</i> (heterozygous) (<i>Wnt1-Cre</i> -mediated ablation)	SRY (sex determining region Y)-box 9	[142,143]	¹ 608160	Acampomelic campomelic dysplasia	r
<i>Sox11</i>	SRY (sex determining region Y)-box 11	[144]	¹ 600898	Mental retardation, autosomal dominant, 27	nr
<i>Sp8</i>	Sp8 transcription factor	[145]	¹ 608306	nr	nr
<i>Tshz1</i>	Teashirt zinc finger family member 1	[146]	¹ 614427	Aural atresia, congenital	nr
<i>Tbx1</i> (knockout) (<i>KRT14-Cre</i> -mediated ablation)	T-box 1	[4,147]	¹ 602054	DiGeorge syndrome Velocardiofacial syndrome Conotruncal anomaly face syndrome Tetralogy of Fallot	r
<i>Tbx2</i>	T-box 2	[148]	¹ 600747	nr	nr
<i>Tbx22</i>	T-box 22	[149]	¹ 300307	Cleft palate with ankyloglossia submucous cleft palate (SMCP)	r
<i>Tcof1</i> (heterozygous)	Treacher Collins-Franceschetti syndrome 1	[150]	¹ 606847	Treacher-Collins syndrome	r
<i>Tfap2A</i> (<i>Wnt1-Cre</i> -mediated ablation)	Transcription factor AP-2 alpha	[151]	¹ 107580	Branchio-oculo-facial syndrome	r
<i>Trp63/Trp63</i>	Transformation related protein p63	[152]	¹ 603273	Ectrodactyly, ectodermal dysplasia, and cleft lip/palate syndrome 3 Orofacial cleft 8 Hay-Wells syndrome Limb-mammary syndrome	r
<i>Vax1</i>	Ventral anterior homeobox 1	[153]	¹ 604294	Microphthalmia, syndromic 11	r
<i>Whsc1</i>	Wolf-Hirschhorn syndrome candidate 1	[154]	¹ 602952	nr	nr
<i>Zeb1</i>	Zinc finger E-box binding homeobox 1	[155]	¹ 189909	Corneal dystrophy	nr
<i>Zfp640/Mzf6d</i>	Zinc finger protein 640	[87]	nr	nr	nr
<i>Zic3</i>	Zinc finger protein of the cerebellum 3	[156]	¹ 300265	Congenital heart defects, nonsyndromic Heterotaxy, visceral, 1 VACTERL association	r
Cytoplasmic proteins					
<i>Akap8/Akap95</i>	A kinase (PRKA) anchor protein 8	[157]	¹ 604692	nr	nr
<i>Apaf1</i>	Apoptotic peptidase activating factor 1	[158]	¹ 602233	nr	nr
<i>B9d1</i>	B9 protein domain 1	[159]	¹ 614144	Meckel syndrome 9	nr
<i>Cask</i>	Calcium/calmodulin-dependent serine protein kinase	[160]	¹ 300172	FG syndrome 4 Mental retardation and microcephaly with pontine and cerebellar hypoplasia	r
<i>Cdkn1c/p57kip2</i>	Cyclin-dependent kinase inhibitor 1C	[161,162]	¹ 600856	Beckwith-Wiedemann syndrome IMAGe syndrome	r
<i>Chuk/Ikk1/Tcf16</i>	Conserved helix-loop-helix ubiquitous kinase	[163]	¹ 600664	Cocoon syndrome	nr
<i>Crk</i>	v-crk sarcoma virus CT10 oncogene homolog	[164]	¹ 164762	nr	nr
<i>Ctnnb1</i> (<i>KRT14-Cre</i> -mediated ablation)	Catenin (cadherin-associated protein), beta 1,	[165,166]	¹ 116806	Mental retardation, autosomal dominant 19	nr
<i>Cyp26B1</i>	Cytochrome P450, family 26, subfamily b, polypeptide 1	[167]	¹ 605207	Craniosynostosis with radiohumeral fusions and other skeletal and craniofacial anomalies	nr
<i>Cyp51</i>	Cytochrome P450, family 51	[168]	¹ 601637	nr	nr
<i>Dhcr7</i>	7-dehydrocholesterol reductase	[169,170]	¹ 602858	Smith-Lemli-Opitz syndrome	r
<i>Dhrs3</i>	Dehydrogenase/reductase (SDR family) member 3	[171,172]	¹ 612830	nr	nr
<i>Dicer1</i> (<i>Pax2-Cre</i> -mediated ablation)	Dicer 1, ribonuclease type III	[29]	¹ 606241	Rhabdomyosarcoma, embryonal, 2 Goiter, multinodular 1 Pleuropulmonary blastoma	nr
<i>Dlg1/Dlg1/Sap97</i>	Discs large 1	[173]	¹ 601014	nr	nr
<i>Fuz</i>	Fuzzy planar cell polarity protein	[174]	¹ 610622	Neural tube defects	nr
<i>Gab1</i>	Growth factor receptor bound protein 2-associated protein 1	[175]	¹ 604439	nr	nr

<i>Gad1/Gad67</i>	Glutamate decarboxylase 1	[176,177]	¹ 605363	Cerebral palsy, spastic quadriplegic, 1	r
<i>Gfce</i>	Glucuronyl C5-epimerase	[178]	¹ 612134	nr	nr
<i>Glg1</i>	Golgi apparatus protein 1	[179]	¹ 600753	nr	nr
<i>Grb2</i>	Growth factor receptor bound protein 2	[180]	¹ 108355	nr	nr
<i>Gsk3b</i>	Glycogen synthase kinase 3 beta	[181]	¹ 605004	nr	nr
<i>Hs2st1</i>	Heparan sulfate 2-O-sulfotransferase 1	[182]	¹ 604844	nr	nr
<i>Hspb11/lft25</i>	Heat shock protein family B (small), member 11	[183]	¹ 604844	nr	nr
<i>Ilk</i>	Integrin linked kinase	[184]	¹ 602366	nr	nr
(<i>Col2a1-Cre</i> -mediated ablation)					
<i>Impad1/jaws</i>	Inositol monophosphatase domain containing 1	[185]	¹ 614010	Chondrodysplasia with joint dislocations, GRAPP type	r
<i>Inpp5e</i>	Inositol polyphosphate-5-phosphatase E	[186]	¹ 613037	Joubert syndrome 1	nr
				Mental retardation, truncal obesity, retinal dystrophy, and micropenis	
<i>Kif3a</i>	Kinesin family member 3A	[187]	¹ 604683	nr	nr
(<i>Wnt1-Cre</i> -mediated ablation)					
<i>Map3k7/Tak1</i>	Mitogen-activated protein kinase kinase kinase 7	[188,189]	¹ 602614	nr	nr
(<i>Wnt1-Cre</i> -mediated ablation)					
<i>Npr13</i>	Nitrogen permease regulator-like 3	[190]	¹ 600928	nr	nr
<i>Ofd1</i>	Oral-facial-digital syndrome 1 gene homolog (human)	[191]	¹ 300170	Joubert syndrome 10	r
(<i>CAG-Cre</i> -mediated ablation)				Orofaciodigital syndrome I	
				Simpson-Golabi-Behmel syndrome, type 2	
<i>Pdss2</i>	Prenyl (solanesyl) diphosphate synthase, subunit 2	[192]	¹ 610564	Coenzyme Q10 deficiency, primary, 3	nr
(<i>Pax2-Cre</i> -mediated ablation)					
<i>Piga</i>	Phosphatidylinositol glycan anchor biosynthesis, class A	[193]	¹ 311770	Multiple congenital anomalies-hypotonia-seizures syndrome 2	nr
(<i>Ella-Cre</i> -mediated ablation)				Paroxysmal nocturnal hemoglobinuria, somatic	
<i>Pkdcc/Vlk</i>	Protein kinase domain containing, cytoplasmic	[194,195]	¹ 614150	nr	nr
(<i>Sox2-Cre</i> -mediated ablation)					
<i>Prickle1</i>	Prickle homolog 1	[196]	¹ 608500	Epilepsy, progressive myoclonic 1B	nr
<i>Rad23b</i>	RAD23b homolog (<i>S. cerevisiae</i>)	[197]	¹ 600062	nr	nr
<i>Rspo2</i>	R-spondin 2 homolog (<i>Xenopus laevis</i>)	[198,199]	¹ 610575	nr	nr
<i>Schip1</i>	Schwannomin interacting protein 1	[87]	nr	nr	nr
<i>Sdccag8</i>	Serologically defined colon cancer antigen 8	[200]	¹ 613524	Bardet-Biedl syndrome 16	nr
				Senior-Loken syndrome 7	
<i>Slc32a1/Viaat</i>	Solute carrier family 32, member 1	[201,202]	nr	nr	nr
<i>Spry1</i>	Sprouty homolog 1	[203]	¹ 602465	nr	nr
(<i>Wnt1-Cre</i> -mediated ablation)					
<i>Spry2</i>	Sprouty homolog 2	[204]	¹ 602466	nr	nr
<i>Sumo1</i>	SMT3 suppressor of mif two 3 homolog 1 (yeast)	[205]	¹ 601912	Orofacial cleft 10	r
(heterozygous)					
<i>Ugdh</i>	UDP-glucose dehydrogenase	[206]	¹ 603370	nr	nr
(<i>Wnt1-Cre</i> -mediated ablation)					
<i>Wdpcp</i>	WD repeat containing planar cell polarity effector	[207]	¹ 613580	uc	nr
Extracellular proteins					
<i>Col2a1</i>	Collagen, type II, alpha 1	[208]	² 120140	Achondrogenesis, type II	r
				Stickler syndrome, type I	
				Kniest dysplasia	
<i>Hspg2</i>	Heparan sulfate proteoglycan 2, perlecan	[209,210]	¹ 142461	Dyssegmental dysplasia	nr
<i>Serpinh1/Hsp47</i>	Serpine peptidase inhibitor, clade H, member 1	[211]	¹ 600943	Schwartz-Jampel syndrome, type 1	nr
(<i>Col2a1-Cre</i> -mediated ablation)				Osteogenesis imperfecta, type X	
<i>Smoc1</i>	SPARC related modular calcium binding 1	[212]	¹ 608488	Microphthalmia with limb anomalies	r

¹Before an OMIM entry number indicates a gene; ²Before an OMIM entry number indicates that the entry includes a description of a gene of known sequence and a phenotype. OMIM: Online Mendelian Inheritance in Man (<http://omim.org>); CL/P: Cleft lip and/or palate; r: Reported; nr: Not reported; uc: Unclassified.

beta receptor II) in the neural crest or *Shh* (sonic hedgehog) in the epithelium result in failure of the palatal shelf development^[10-13]. The fifth category is the

persistence of medial edge epithelial (MEE) cells. The palatal epithelia are regionally divided into three parts: oral, nasal, and MEE. The MEE cells are removed from

Table 2 Classification of genes associated with cleft palate in mice

	Genes
Signaling pathway	
TGF-beta signaling pathway	<i>Acor1/Alk2, Acor2a, Bmp4¹, Bmp7, Bmpr1a/Alk3, Cdc42, Chrd, Crebbp/Cbp, Cited2, Foxc2/Mfh1¹, Foxd3, Foxe1/Titf2/Fkhl15¹, Foxf2, Fst, Inhba, Gdf11/Bmp11, Map3k7/Tak1, Pitx2, Smad4, Smad7, Tgfb2¹, Tgfb3¹, Tgfb1/Alk5¹, Tgfb2¹</i>
Hedgehog signaling pathway	<i>Bmp4¹, Bmp7, Crebbp/Cbp, Gli2¹, Gli3¹, Gsk3b, Ptch1/Ptc1¹, Shh¹, Smo/Smoh, Wnt5a¹, Wnt9b</i>
Wnt signaling pathway	<i>Acor1/Alk2, Ctnnb1, Crebbp/Cbp, Edn1¹, Fzd2, Gsk3b, Lrp6, Map3k7/Tak1, Prickle1, Smad4, Smo/Smoh, Wnt5a¹, Wnt9b</i>
FGF signaling pathway	<i>Fgf10, Fgf18, Fgf9, Fgfr1¹, Fgfr2¹, Grb2, Spry1, Spry2</i>
MAPK signaling pathway	<i>Cdc42, Chuk/Ikk1/Tcf16, Egfr, Fgf10, Fgf18, Fgf9, Fgfr1¹, Fgfr2¹, Grb2, Map3k7/Tak1, Pdgfra¹, Tgfb2¹, Tgfb3¹, Tgfb1/Alk5¹, Tgfb2¹, Crk, Itgb1</i>
Cytokine-cytokine receptor interaction	<i>Acor1/Alk2, Acor2a, Bmp7, Bmpr1a/Alk3, Egfr, Inhba, Pdgfra¹, Pdgfc¹, Tgfb2¹, Tgfb3¹, Tgfb1/Alk5¹, Tgfb2¹, Vegfa</i>
CBL mediated ligand-induced downregulation of EGF receptors	<i>Egfr, Grb2, Pdgfra¹</i>
Sprouty regulation of tyrosine kinase signals	<i>Egfr, Grb2, Spry2, Spry1</i>
NFkB activation	<i>Crebbp/Cbp, Chuk/Ikk1/Tcf16, Map3k7/Tak1, Smad4, Tgfb1/Alk5¹, Tgfb2¹</i>
Adherens junction	<i>Crebbp/Cbp, Ctnnb1, Cdc42, Egfr, Fgfr1¹, Map3k7/Tak1, Smad4, Snai2, Tgfb1/Alk5¹, Tgfb2¹</i>
Focal adhesion	<i>Ctnnb1, Cdc42, Col2a1¹, Crk, Egfr, Gsk3b, Grb2, Itga5, Itgb1, Itgb8, Ilk, Pdgfra¹, Pdgfc¹, Vegfa</i>
Steroid biosynthesis	<i>Cyp51, Dhcr7¹, Sc5d/Sc5dl</i>
Cell cycle	<i>Crebbp/Cbp, Cdkn1c/p57kip2¹, Gsk3b, Smad4, Tgfb2¹, Tgfb3¹</i>
Regulation of actin cytoskeleton	<i>Cdc42, Crk, Egfr, Fgf9, Fgf10, Fgf18, Fgfr1¹, Fgfr2¹, Itga5, Itgb1, Itgb8, Pdgfra¹, Pdgfc¹</i>
Axon guidance	<i>Cdc42, Efn5, Efnb1¹, Efnb2, Gsk3b, Itgb1</i>
Endocytosis	<i>Cdc42, Egfr, Fgfr2¹, Pdgfra¹, Tgfb1/Alk5¹, Tgfb2¹</i>
Angiogenesis	<i>Ctnnb1, Crk, Efnb1¹, Efnb2, Fgfr1¹, Fgfr2¹, Fzd2, Gsk3b, Grb2, Jag1, Jag2, Pdgfra¹, Pdgfc¹, Vegfa, Wnt5a¹</i>
Family	
Homeobox protein	<i>Alx1¹, Barx1, Alx3¹, Alx4¹, Dlx1, Dlx2, Dlx5¹, Gbx2, Gsc, Hoxa2¹, Msx1¹, Msx2¹, Pax9, Prrx1¹, Pitx1¹, Pitx2, Rax, Shox2, Vax1¹</i>
Tgf-beta receptor type I and II	<i>Acor1/Alk2, Acor2a, Bmpr1a, Tgfb1/Alk5¹, Tgfb2¹</i>
Tgf-beta family	<i>Bmp4¹, Bmp7, Gdf11, Inhba, Tgfb2¹, Tgfb3¹</i>
Tyrosine protein kinase	<i>Egfr, Fgfr1¹, Fgfr2¹, Pdgfra¹, Ror2¹, Ryk</i>
Ephrin	<i>Efn5, Efnb1¹, Efnb2</i>
Zinc finger protein	<i>Gli2¹, Gli3¹, Zic3¹, Hic1, Snai2</i>
Forkhead protein	<i>Foxc2¹, Foxd3, Foxe1¹, Foxf2</i>
T-box protein	<i>Tbx1¹, Tbx2, Tbx22¹</i>
Sox transcription factor	<i>Sox5, Sox9¹, Sox11</i>
Heparin-binding growth factor family member/FGF	<i>Fgf9, Fgf10, Fgf18</i>
Sprouty	<i>Spry1, Spry2</i>
Smad	<i>Smad4, Smad7</i>
Integrin beta subunit	<i>Itgb1, Itgb8</i>
Frizzled	<i>Fzd2, Smo</i>
Wnt related	<i>Wnt5a¹, Wnt9b</i>
Serine-threonine protein kinase	<i>Ilk, Mpa3k7/Tak1</i>
LIM domain containing protein	<i>Lhx8¹, Lhx7, Prickle1</i>
EGF-like domain protein	<i>Jag1, Jag2</i>

¹Genes involved in human cleft lip and/or palate. TGF: Transforming growth factor; FGF: Fibroblast growth factor; MAPK: Mitogen-activated protein kinase; CBL: Casitas B-lineage lymphoma; EGF: Epidermal growth factor.

the fusion line by epithelial cell migration, apoptosis, and epithelial-mesenchymal transdifferentiation^[14]. *Tgfb3* (transforming growth factor, beta 3) or *Egfr* (epidermal growth factor receptor) knockout mice lack the adhesive interactions between the palatal shelves because the fate of MEE cells is altered^[15-18]. In the last category, the cleft palate arises as a secondary defect, due to tongue or bone anomalies during development. For example, *Hoxa2* (homeobox A2) knockout mice exhibit CP, because depression of

the tongue is inhibited by the abnormal attachment of the hyoglossus muscle to the greater horn of the hyoid^[19,20].

There is molecular heterogeneity along the medial-lateral and anterior-posterior axes of palatal shelves. Regionally restricted expression of molecules provides distinct regulatory mechanisms for the development of palatal shelves. For instance, *Msx1*, *Shox2* (short stature homeobox 2), *Fgf10* (fibroblast growth factor 10), *Bmp2* (bone morphogenetic protein 2), and *Bmp4* (bone

Table 3 Six categories of defects that result in cleft palate in mutant mice

Defects		Knockout mice
(1)	Failure of the palatal shelf formation (small palatal shelves)	<i>Acr2a</i> ^[34,50] , <i>Fgfr2</i> ^[13] , <i>Lhx8</i> ^[11] , <i>Pitx2</i> ^[126] , <i>Itga5</i> ^[65] , <i>Fst</i> ^[46]
(2)	Abnormal fusion of palatal shelves and tongue or the mandible	<i>Jag2</i> ^[70] , <i>Irff</i> ^[109,110] , <i>Tbx1</i> ^[4] , <i>Egfr</i> ^[41]
(3)	Failure or delayed palatal shelf elevation	<i>Pax9</i> ^[6] , <i>Pitx1</i> ^[7] , <i>Osr2</i> ^[9] , <i>Gli2</i> ^[8] , <i>Tgfb2</i> ^[55] , <i>Pdgfr</i> ^[51] , <i>Dhrs3</i> ^[172]
(4)	Failure of the palatal shelf development after the elevation	<i>Msx1</i> ^[10] , <i>Lhx8</i> ^[11] , <i>Tgfr2</i> (<i>Wnt1-Cre</i> -mediated ablation) ^[12]
(5)	Persistence of medial edge epithelial cells	<i>Apafl</i> ^[158] , <i>Tgfb3</i> ^[18] , <i>Egfr</i> ^[17] , <i>Ctnnb1</i> (<i>K14-Cre</i> -mediated ablation) ^[166]
(6)	Secondary defect	<i>Hoxa2</i> ^[19,20] , <i>Satb2</i> ^[135] , <i>Acr1/Alk2</i> (<i>Wnt1-Cre</i> -mediated ablation) ^[33]

¹Genes involved in human cleft lip and/or palate.

morphogenetic protein 4) are exclusively expressed in the anterior region of the palatal shelves^[4,13,21,22]. The ablation of *Msx1* in mice results in cell proliferation alterations in the anterior palatal mesenchyme and cleft palate^[23]. *Shox2* shows restricted expression patterns in the anterior palatal mesenchyme and the ablation of *Shox2* in mice results in anterior cleft palates^[22]. *Fgf10* is also expressed in the anterior palatal mesenchymal cells and induces *Shh* expression through its receptor *Fgfr2* (fibroblast growth factor receptor 2) in the palatal epithelium^[13]. On the other hand, *Pax9* is expressed in the posterior palatal shelves. Ablation of *Pax9* results in cleft palates because of a palatal shelf development defect^[6,21]. Even though it is known that *Tbx1* induces the expression of *Pax9* in the posterior part of palatal shelves^[4], the mechanism of *Tbx1*-induced *Pax9* expression during palatogenesis remains unknown. There is also molecular heterogeneity along the medial-lateral axis of the palatal shelf. For instance, *Osr2* expression in the palatal shelf is characterized by a medial-lateral gradient. Loss of *Osr2* results in the failure of palatal shelf elevation because of the delayed development of the medial part of palatal shelf^[9].

MOLECULAR PATHOGENESIS OF CLEFT PALATES

Since most of the studies in mice focus on complete CP, the pathogenesis of other CP phenotypes is not well understood. *Tbx1* is expressed in the developing palatal shelves in mice^[4], highlighting the crucial function of *Tbx1* in regulating palatal development. Loss of *Tbx1* results in the abnormal fusion of the oral epithelia, which induces CP by preventing the elevation of palatal shelves^[4]. The phenotypic variation in the *Tbx1*^{-/-} palates strongly suggests that *Tbx1* is involved in modifier genes and/or stochastic factors. *Tgfb3*^{-/-} mice also exhibit either incomplete or complete CP^[15,16]. Ablation of *Shox2* results in anterior cleft palates^[22]. Knockout mice of *Sall3* (spalt-like transcription factor 3), which is expressed in the palatal mesenchyme, show hypoplasia of the soft palate and epiglottis^[24]. These mice are unique models for studying the etiopathogenesis underlying the variety of CP phenotypes in humans.

A comprehensive list of molecules associated with CL/P in mice and their classification should provide

insights into the genetic etiology of CL/P; however, the phenotype of knockout mice does not always recapitulate the phenotype in humans (Table 1). Since Table 1 includes the genes associated with tissue-specific conditional knockout mice, mutations of these genes may induce the phenotype of embryonic lethality in humans. Haploinsufficiency mutations of the *TBX1* mutation are associated with CP^[25]; however, heterozygous mice with *Tbx1* are phenotypically normal, and *Tbx1*^{-/-} mice have CP phenotypes^[4], thereby suggesting a species-specific requirement for *Tbx1* dosage. Mutations of the *PVRL1* (poliovirus receptor-related 1 or Nectin 1) cause CL/P-ectodermal dysplasia syndrome and nonsyndromic CL/P (OMIM #225060), whereas *Pvr1*^{-/-} mice do not develop CP^[26]. Lack of palatal phenotypes in mice may be a consequence of functional redundancy of *Pvr1* genes. Interestingly, *Smad4*, *Smad7*, *Fgf9*, *Fgf10*, and *Fgf18* are involved in CP in mice (Table 1), whereas *SMAD3* (OMIM #613795), *FGF8* (OMIM #600483), and *FGF17* (OMIM #603725) are involved in CP in humans.

Candidate genes for nonsyndromic CP in human must show a relevant spatio-temporal gene expression pattern in the developing palatal shelves, and induce a specific cleft palate phenotype when deleted^[1]. Disease genes responsible for Mendelian forms of syndromic CP are also important in the etiology of nonsyndromic CP^[27]. *TBX1* mutations have been found in patients with incomplete CP without clinical diagnosis of del22q11.2 syndrome^[25]. *TBX1* is also one of the disease genes of conotruncal anomaly face syndrome (OMIM #217095), which is often associated with cleft palates, particularly submucosal CP, and bifid uvula. *Tbx1*^{-/-} palatal phenotype in mice makes *Tbx1* a potential candidate gene for nonsyndromic CP, especially submucosal CP and incomplete CP in humans.

RECENT ADVANCES IN PALATOGENESIS

Even though many genes associated with CP have been identified, little is known about how the environment influences gene expression in palatogenesis, and palatal phenotype. Epigenetics, such as DNA methylation and chromatin remodeling, and the microRNA (miRNA) regulation could change gene expression profiles and phenotypes. Hundreds of miRNAs, small non-

coding RNAs that modulate gene expression at the post-transcriptional level are expressed in murine embryonic craniofacial tissue^[28]. Conditional knockout mice of *Dicer1* (dicer 1, ribonuclease type III), which regulates the generation of miRNA, resulted in disrupted palatogenesis^[29], suggesting that the miRNA function may be important in mammalian palatogenesis. miR-140, which modulates BMP signaling, regulates palatogenesis in mice^[30] and miR-17-92 modulates Tbx1 and Tbx3 (T-box 3) activity, resulting in orofacial clefting^[31]. Interestingly, transcription of *Dicer1* is regulated by TP63 (transformation related protein p63)^[32], whose mutations are associated with cleft palate phenotypes (Table 1). Since genes involved in miRNA generation and individual CP genes can both be modulated by several miRNAs, it is conceivable that complex gene-miRNA interactions exist during palatogenesis. Genetically engineered mice with miRNAs, which modulate CP genes, may provide new information on the gene interactions underlying the palatogenesis. Further studies on miRNA and methylated genes involved in palatogenesis are necessary to understand the environmental factors contributing to CP.

CONCLUSION

Studies with genetically engineered mice with CP reveal the importance of regulated molecular functions in palatogenesis and provide the opportunity to discover new genes implicated in palatogenesis. However, there is still much to learn about transcriptional regulation and molecular networks in palatogenesis. The interactions between environmental/stochastic factors and genes in the etiopathogenesis of CL/P require further studies. Teratogenic effects of dioxins and retinoic acid have been reported in mice^[1]. Mutant mice with CP can also be used as models to assess environmental effects or gene-environment interactions. Epithelial abnormal fusion could be one of the stochastic causes that induce a variety of CP phenotypes in mice. Understanding the palatal epithelial functions during palatogenesis may also lead to the discovery of novel therapeutic methods for CL/P.

REFERENCES

- Murray JC. Gene/environment causes of cleft lip and/or palate. *Clin Genet* 2002; **61**: 248-256 [PMID: 12030886]
- Jones MC. Etiology of facial clefts: prospective evaluation of 428 patients. *Cleft Palate J* 1988; **25**: 16-20 [PMID: 3422594]
- Chai Y, Maxson RE. Recent advances in craniofacial morphogenesis. *Dev Dyn* 2006; **235**: 2353-2375 [PMID: 16680722]
- Funato N, Nakamura M, Richardson JA, Srivastava D, Yanagisawa H. Tbx1 regulates oral epithelial adhesion and palatal development. *Hum Mol Genet* 2012; **21**: 2524-2537 [PMID: 22371266 DOI: 10.1093/hmg/dds071]
- Mi H, Muruganujan A, Thomas PD. PANTHER in 2013: modeling the evolution of gene function, and other gene attributes, in the context of phylogenetic trees. *Nucleic Acids Res* 2013; **41**: D377-D386 [PMID: 23193289 DOI: 10.1093/nar/gks1118]
- Peters H, Neubüser A, Kratochwil K, Balling R. Pax9-deficient mice lack pharyngeal pouch derivatives and teeth and exhibit craniofacial and limb abnormalities. *Genes Dev* 1998; **12**: 2735-2747 [PMID: 9732271]
- Szeto DP, Rodriguez-Esteban C, Ryan AK, O'Connell SM, Liu F, Kioussi C, Gleiberman AS, Izpisua-Belmonte JC, Rosenfeld MG. Role of the Bicoid-related homeodomain factor Pitx1 in specifying hindlimb morphogenesis and pituitary development. *Genes Dev* 1999; **13**: 484-494 [PMID: 10049363]
- Mo R, Freer AM, Zinyk DL, Crackower MA, Michaud J, Heng HH, Chik KW, Shi XM, Tsui LC, Cheng SH, Joyner AL, Hui C. Specific and redundant functions of Gli2 and Gli3 zinc finger genes in skeletal patterning and development. *Development* 1997; **124**: 113-123 [PMID: 9006072]
- Lan Y, Ovitt CE, Cho ES, Maltby KM, Wang Q, Jiang R. Odd-skipped related 2 (Osr2) encodes a key intrinsic regulator of secondary palate growth and morphogenesis. *Development* 2004; **131**: 3207-3216 [PMID: 15175245]
- Satokata I, Maas R. Msx1 deficient mice exhibit cleft palate and abnormalities of craniofacial and tooth development. *Nat Genet* 1994; **6**: 348-356 [PMID: 7914451]
- Zhao Y, Guo YJ, Tomac AC, Taylor NR, Grinberg A, Lee EJ, Huang S, Westphal H. Isolated cleft palate in mice with a targeted mutation of the LIM homeobox gene *lhx8*. *Proc Natl Acad Sci USA* 1999; **96**: 15002-15006 [PMID: 10611327]
- Ito Y, Yeo JY, Chytil A, Han J, Bringas P, Nakajima A, Shuler CF, Moses HL, Chai Y. Conditional inactivation of *Tgfb2* in cranial neural crest causes cleft palate and calvaria defects. *Development* 2003; **130**: 5269-5280 [PMID: 12975342]
- Rice R, Spencer-Dene B, Connor EC, Gritli-Linde A, McMahon AP, Dickson C, Thesleff I, Rice DP. Disruption of *Fgf10/Fgfr2b*-coordinated epithelial-mesenchymal interactions causes cleft palate. *J Clin Invest* 2004; **113**: 1692-1700 [PMID: 15199404]
- Jin JZ, Ding J. Analysis of cell migration, transdifferentiation and apoptosis during mouse secondary palate fusion. *Development* 2006; **133**: 3341-3347 [PMID: 16887819]
- Kaartinen V, Voncken JW, Shuler C, Warburton D, Bu D, Heisterkamp N, Groffen J. Abnormal lung development and cleft palate in mice lacking TGF-beta 3 indicates defects of epithelial-mesenchymal interaction. *Nat Genet* 1995; **11**: 415-421 [PMID: 7493022]
- Proetzel G, Pawlowski SA, Wiles MV, Yin M, Boivin GP, Howles PN, Ding J, Ferguson MW, Doetschman T. Transforming growth factor-beta 3 is required for secondary palate fusion. *Nat Genet* 1995; **11**: 409-414 [PMID: 7493021]
- Miettinen PJ, Chin JR, Shum L, Slavkin HC, Shuler CF, Derynck R, Werb Z. Epidermal growth factor receptor function is necessary for normal craniofacial development and palate closure. *Nat Genet* 1999; **22**: 69-73 [PMID: 10319864]
- Taya Y, O'Kane S, Ferguson MW. Pathogenesis of cleft palate in TGF-beta3 knockout mice. *Development* 1999; **126**: 3869-3879 [PMID: 10433915]
- Gendron-Maguire M, Mallo M, Zhang M, Gridley T. Hoxa-2 mutant mice exhibit homeotic transformation of skeletal elements derived from cranial neural crest. *Cell* 1993; **75**: 1317-1331 [PMID: 7903600]
- Barrow JR, Capecchi MR. Compensatory defects associated with mutations in *Hoxa1* restore normal palatogenesis to *Hoxa2* mutants. *Development* 1999; **126**: 5011-5026 [PMID: 10529419]
- Hilliard SA, Yu L, Gu S, Zhang Z, Chen YP. Regional regulation of palatal growth and patterning along the anterior-posterior axis in mice. *J Anat* 2005; **207**: 655-667 [PMID: 16313398]
- Yu L, Gu S, Alappat S, Song Y, Yan M, Zhang X, Zhang G, Jiang Y, Zhang Z, Zhang Y, Chen Y. Shox2-deficient mice exhibit a rare type of incomplete clefting of the secondary palate. *Development* 2005; **132**: 4397-4406 [PMID: 16141225]
- Zhang Z, Song Y, Zhao X, Zhang X, Fermin C, Chen Y. Rescue of cleft palate in *Msx1*-deficient mice by transgenic *Bmp4* reveals a network of BMP and Shh signaling in the regulation of mammalian palatogenesis. *Development* 2002; **129**: 4135-4146 [PMID: 12030886]

- 12163415]
- 24 **Parrish M**, Ott T, Lance-Jones C, Schuetz G, Schwaeger-Nickolenko A, Monaghan AP. Loss of the *Sall3* gene leads to palate deficiency, abnormalities in cranial nerves, and perinatal lethality. *Mol Cell Biol* 2004; **24**: 7102-7112 [PMID: 15282310]
- 25 **Yagi H**, Furutani Y, Hamada H, Sasaki T, Asakawa S, Minoshima S, Ichida F, Joo K, Kimura M, Imamura S, Kamatani N, Momma K, Takao A, Nakazawa M, Shimizu N, Matsuoka R. Role of *TBX1* in human *del22q11.2* syndrome. *Lancet* 2003; **362**: 1366-1373 [PMID: 14585638]
- 26 **Barron MJ**, Brookes SJ, Draper CE, Garrod D, Kirkham J, Shore RC, Dixon MJ. The cell adhesion molecule nectin-1 is critical for normal enamel formation in mice. *Hum Mol Genet* 2008; **17**: 3509-3520 [PMID: 18703497 DOI: 10.1093/hmg/ddn243]
- 27 **Jugessur A**, Murray JC. Orofacial clefting: recent insights into a complex trait. *Curr Opin Genet Dev* 2005; **15**: 270-278 [PMID: 15917202]
- 28 **Mukhopadhyay P**, Brock G, Pihur V, Webb C, Pisano MM, Greene RM. Developmental microRNA expression profiling of murine embryonic orofacial tissue. *Birth Defects Res A Clin Mol Teratol* 2010; **88**: 511-534 [PMID: 20589883 DOI: 10.1002/bdra.20684]
- 29 **Barritt LC**, Miller JM, Scheetz LR, Gardner K, Pierce ML, Soukup GA, Rocha-Sanchez SM. Conditional deletion of the human ortholog gene *Dicer1* in *Pax2*-Cre expression domain impairs orofacial development. *Indian J Hum Genet* 2012; **18**: 310-319 [PMID: 23716939 DOI: 10.4103/0971-6866.107984]
- 30 **Nakamura Y**, Inloes JB, Katagiri T, Kobayashi T. Chondrocyte-specific microRNA-140 regulates endochondral bone development and targets *Dnpep* to modulate bone morphogenetic protein signaling. *Mol Cell Biol* 2011; **31**: 3019-3028 [PMID: 21576357 DOI: 10.1128/MCB.05178-11]
- 31 **Wang J**, Bai Y, Li H, Greene SB, Klysiak E, Yu W, Schwartz RJ, Williams TJ, Martin JF. MicroRNA-17-92, a direct *Ap-2a* transcriptional target, modulates T-box factor activity in orofacial clefting. *PLoS Genet* 2013; **9**: e1003785 [PMID: 24068957 DOI: 10.1371/journal.pgen.1003785]
- 32 **Su X**, Chakravarti D, Cho MS, Liu L, Gi YJ, Lin YL, Leung ML, El-Naggar A, Creighton CJ, Suraokar MB, Wistuba I, Flores ER. *TAp63* suppresses metastasis through coordinate regulation of *Dicer* and *miRNAs*. *Nature* 2010; **467**: 986-990 [PMID: 20962848 DOI: 10.1038/nature09459]
- 33 **Dudas M**, Sridurongrit S, Nagy A, Okazaki K, Kaartinen V. Craniofacial defects in mice lacking BMP type I receptor *Alk2* in neural crest cells. *Mech Dev* 2004; **121**: 173-182 [PMID: 15037318]
- 34 **Matzuk MM**, Kumar TR, Bradley A. Different phenotypes for mice deficient in either activins or activin receptor type II. *Nature* 1995; **374**: 356-360 [PMID: 7885474]
- 35 **Liu W**, Sun X, Braut A, Mishina Y, Behringer RR, Mina M, Martin JF. Distinct functions for *Bmp* signaling in lip and palate fusion in mice. *Development* 2005; **132**: 1453-1461 [PMID: 15716346]
- 36 **Kouskoura T**, Kozlova A, Alexiou M, Blumer S, Zouvelou V, Katsaros C, Chiquet M, Mitsiadis TA, Graf D. The etiology of cleft palate formation in *BMP7*-deficient mice. *PLoS One* 2013; **8**: e59463 [PMID: 23516636 DOI: 10.1371/journal.pone.0059463]
- 37 **Bachiller D**, Klingensmith J, Shneyder N, Tran U, Anderson R, Rossant J, De Robertis EM. The role of *chordin/Bmp* signals in mammalian pharyngeal development and *DiGeorge* syndrome. *Development* 2003; **130**: 3567-3578 [PMID: 12810603]
- 38 **Ivkovic S**, Yoon BS, Popoff SN, Safadi FF, Libuda DE, Stephenson RC, Daluiski A, Lyons KM. Connective tissue growth factor coordinates chondrogenesis and angiogenesis during skeletal development. *Development* 2003; **130**: 2779-2791 [PMID: 12736220]
- 39 **Kurihara Y**, Kurihara H, Suzuki H, Kodama T, Maemura K, Nagai R, Oda H, Kuwaki T, Cao WH, Kamada N. Elevated blood pressure and craniofacial abnormalities in mice deficient in endothelin-1. *Nature* 1994; **368**: 703-710 [PMID: 8152482]
- 40 **Colvin JS**, White AC, Pratt SJ, Ornitz DM. Lung hypoplasia and neonatal death in *Fgf9*-null mice identify this gene as an essential regulator of lung mesenchyme. *Development* 2001; **128**: 2095-2106 [PMID: 11493531]
- 41 **Alappat SR**, Zhang Z, Suzuki K, Zhang X, Liu H, Jiang R, Yamada G, Chen Y. The cellular and molecular etiology of the cleft secondary palate in *Fgf10* mutant mice. *Dev Biol* 2005; **277**: 102-113 [PMID: 15572143]
- 42 **Liu Z**, Xu J, Colvin JS, Ornitz DM. Coordination of chondrogenesis and osteogenesis by fibroblast growth factor 18. *Genes Dev* 2002; **16**: 859-869 [PMID: 11937493]
- 43 **Ohbayashi N**, Shibayama M, Kurotaki Y, Imanishi M, Fujimori T, Itoh N, Takada S. *FGF18* is required for normal cell proliferation and differentiation during osteogenesis and chondrogenesis. *Genes Dev* 2002; **16**: 870-879 [PMID: 11937494]
- 44 **Trokovic N**, Trokovic R, Mai P, Partanen J. *Fgfr1* regulates patterning of the pharyngeal region. *Genes Dev* 2003; **17**: 141-153 [PMID: 12514106]
- 45 **De Moerloose L**, Spencer-Dene B, Revest JM, Hajhosseini M, Rosewell I, Dickson C. An important role for the IIIb isoform of fibroblast growth factor receptor 2 (*FGFR2*) in mesenchymal-epithelial signalling during mouse organogenesis. *Development* 2000; **127**: 483-492 [PMID: 10631169]
- 46 **Matzuk MM**, Lu N, Vogel H, Sellheyer K, Roop DR, Bradley A. Multiple defects and perinatal death in mice deficient in *folliculin*. *Nature* 1995; **374**: 360-363 [PMID: 7885475]
- 47 **Homanics GE**, DeLorey TM, Firestone LL, Quinlan JJ, Handforth A, Harrison NL, Krasowski MD, Rick CE, Korpi ER, Mäkelä R, Brilliant MH, Hagiwara N, Ferguson C, Snyder K, Olsen RW. Mice devoid of gamma-aminobutyrate type A receptor beta3 subunit have epilepsy, cleft palate, and hypersensitive behavior. *Proc Natl Acad Sci USA* 1997; **94**: 4143-4148 [PMID: 9108119]
- 48 **Lee YS**, Lee SJ. Regulation of *GDF-11* and *myostatin* activity by *GASP-1* and *GASP-2*. *Proc Natl Acad Sci USA* 2013; **110**: E3713-E3722 [PMID: 24019467 DOI: 10.1073/pnas.1309907110]
- 49 **Anderson KD**, Pan L, Yang XM, Hughes VC, Walls JR, Dominguez MG, Simmons MV, Burfeind P, Xue Y, Wei Y, Macdonald LE, Thurston G, Daly C, Lin HC, Economides AN, Valenzuela DM, Murphy AJ, Yancopoulos GD, Gale NW. Angiogenic sprouting into neural tissue requires *Gpr124*, an orphan G protein-coupled receptor. *Proc Natl Acad Sci USA* 2011; **108**: 2807-2812 [PMID: 21282641 DOI: 10.1073/pnas.1019761108]
- 50 **Matzuk MM**, Kumar TR, Vassalli A, Bickenbach JR, Roop DR, Jaenisch R, Bradley A. Functional analysis of *activins* during mammalian development. *Nature* 1995; **374**: 354-356 [PMID: 7885473]
- 51 **Ding H**, Wu X, Boström H, Kim I, Wong N, Tsoi B, O'Rourke M, Koh GY, Soriano P, Betsholtz C, Hart TC, Marazita ML, Field LL, Tam PP, Nagy A. A specific requirement for *PDGF-C* in palate formation and *PDGFR-alpha* signaling. *Nat Genet* 2004; **36**: 1111-1116 [PMID: 15361870]
- 52 **Choi SJ**, Marazita ML, Hart PS, Sulima PP, Field LL, McHenry TG, Govil M, Cooper ME, Letra A, Menezes R, Narayanan S, Mansilla MA, Granjeiro JM, Vieira AR, Lidral AC, Murray JC, Hart TC. The *PDGF-C* regulatory region SNPs rs28999109 decreases promoter transcriptional activity and is associated with *CL/P*. *Eur J Hum Genet* 2009; **17**: 774-784 [PMID: 19092777]
- 53 **Morrison-Graham K**, Schatteman GC, Bork T, Bowen-Pope DF, Weston JA. A *PDGF* receptor mutation in the mouse (*Patch*) perturbs the development of a non-neuronal subset of neural crest-derived cells. *Development* 1992; **115**: 133-142 [PMID: 1638976]
- 54 **Tallquist MD**, Soriano P. Cell autonomous requirement for *PDGFRalpha* in populations of cranial and cardiac neural crest cells. *Development* 2003; **130**: 507-518 [PMID: 12490557]
- 55 **Sanford LP**, Ormsby I, Gittenberger-de Groot AC, Sariola H, Friedman R, Boivin GP, Cardell EL, Doetschman T. *TGFbeta2* knockout mice have multiple developmental defects that are non-overlapping with other *TGFbeta* knockout phenotypes. *Development* 1997; **124**: 2659-2670 [PMID: 9217007]

- 56 **Dudas M**, Kim J, Li WY, Nagy A, Larsson J, Karlsson S, Chai Y, Kaartinen V. Epithelial and ectomesenchymal role of the type I TGF- β receptor ALK5 during facial morphogenesis and palatal fusion. *Dev Biol* 2006; **296**: 298-314 [PMID: 16806156]
- 57 **Li WY**, Dudas M, Kaartinen V. Signaling through Tgf- β type I receptor Alk5 is required for upper lip fusion. *Mech Dev* 2008; **125**: 874-882 [PMID: 18586087 DOI: 10.1016/j.mod.2008.06.003]
- 58 **Xu X**, Han J, Ito Y, Bringas P, Urata MM, Chai Y. Cell autonomous requirement for Tgfb β 2 in the disappearance of medial edge epithelium during palatal fusion. *Dev Biol* 2006; **297**: 238-248 [PMID: 16780827]
- 59 **Stalmans I**, Lambrechts D, De Smet F, Jansen S, Wang J, Maity S, Kneer P, von der Ohe M, Swillen A, Maes C, Gewillig M, Molin DG, Hellings P, Boetel T, Haardt M, Compennolle V, Dewerchin M, Plaisance S, Vlietinck R, Emanuel B, Gittenberger-de Groot AC, Scambler P, Morrow B, Driscoll DA, Moons L, Esguerra CV, Carmeliet G, Behn-Krappa A, Devriendt K, Collen D, Conway SJ, Carmeliet P. VEGF: a modifier of the del22q11 (DiGeorge) syndrome? *Nat Med* 2003; **9**: 173-182 [PMID: 12539040]
- 60 **Mima J**, Koshino A, Oka K, Uchida H, Hieda Y, Nohara K, Kogo M, Chai Y, Sakai T. Regulation of the epithelial adhesion molecule CEACAM1 is important for palate formation. *PLoS One* 2013; **8**: e61653 [PMID: 23613893 DOI: 10.1371/journal.pone.0061653]
- 61 **Holmberg J**, Clarke DL, Frisén J. Regulation of repulsion versus adhesion by different splice forms of an Eph receptor. *Nature* 2000; **408**: 203-206 [PMID: 11089974]
- 62 **Compagni A**, Logan M, Klein R, Adams RH. Control of skeletal patterning by ephrinB1-EphB interactions. *Dev Cell* 2003; **5**: 217-230 [PMID: 12919674]
- 63 **Dravis C**, Henkemeyer M. Ephrin-B reverse signaling controls septation events at the embryonic midline through separate tyrosine phosphorylation-independent signaling avenues. *Dev Biol* 2011; **355**: 138-151 [PMID: 21539827]
- 64 **Yu H**, Smallwood PM, Wang Y, Vidaltamayo R, Reed R, Nathans J. Frizzled 1 and frizzled 2 genes function in palate, ventricular septum and neural tube closure: general implications for tissue fusion processes. *Development* 2010; **137**: 3707-3717 [PMID: 20940229]
- 65 **Bader BL**, Rayburn H, Crowley D, Hynes RO. Extensive vasculogenesis, angiogenesis, and organogenesis precede lethality in mice lacking all α v integrins. *Cell* 1998; **95**: 507-519 [PMID: 9827803]
- 66 **Liang D**, Wang X, Mittal A, Dhiman S, Hou SY, Degenhardt K, Astrof S. Mesodermal expression of integrin α 5 β 1 regulates neural crest development and cardiovascular morphogenesis. *Dev Biol* 2014; **395**: 232-244 [PMID: 25242040 DOI: 10.1016/j.ydbio.2014.09.014]
- 67 **Aszodi A**, Hunziker EB, Brakebusch C, Fässler R. Beta1 integrins regulate chondrocyte rotation, G1 progression, and cytokinesis. *Genes Dev* 2003; **17**: 2465-2479 [PMID: 14522949]
- 68 **Zhu J**, Motejlek K, Wang D, Zang K, Schmidt A, Reichardt LF. beta8 integrins are required for vascular morphogenesis in mouse embryos. *Development* 2002; **129**: 2891-2903 [PMID: 12050137]
- 69 **Humphreys R**, Zheng W, Prince LS, Qu X, Brown C, Loomes K, Huppert SS, Baldwin S, Goudy S. Cranial neural crest ablation of Jagged1 recapitulates the craniofacial phenotype of Alagille syndrome patients. *Hum Mol Genet* 2012; **21**: 1374-1383 [PMID: 22156581 DOI: 10.1093/hmg/ddr575]
- 70 **Jiang R**, Lan Y, Chapman HD, Shawber C, Norton CR, Serreze DV, Weinmaster G, Gridley T. Defects in limb, craniofacial, and thymic development in Jagged2 mutant mice. *Genes Dev* 1998; **12**: 1046-1057 [PMID: 9531541]
- 71 **Zaritsky JJ**, Eckman DM, Wellman GC, Nelson MT, Schwarz TL. Targeted disruption of Kir2.1 and Kir2.2 genes reveals the essential role of the inwardly rectifying K(+) current in K(+)-mediated vasodilation. *Circ Res* 2000; **87**: 160-166 [PMID: 10904001]
- 72 **Song L**, Li Y, Wang K, Wang YZ, Molotkov A, Gao L, Zhao T, Yamagami T, Wang Y, Gan Q, Pleasure DE, Zhou CJ. Lrp6-mediated canonical Wnt signaling is required for lip formation and fusion. *Development* 2009; **136**: 3161-3171 [PMID: 19700620 DOI: 10.1242/dev.037440]
- 73 **Schwabe GC**, Trepczik B, Süring K, Brieske N, Tucker AS, Sharpe PT, Minami Y, Mundlos S. Ror2 knockout mouse as a model for the developmental pathology of autosomal recessive Robinow syndrome. *Dev Dyn* 2004; **229**: 400-410 [PMID: 14745966]
- 74 **Halford MM**, Armes J, Buchert M, Meskenaitė V, Grail D, Hibbs ML, Wilks AF, Farlie PG, Newgreen DF, Hovens CM, Stacker SA. Ryk-deficient mice exhibit craniofacial defects associated with perturbed Eph receptor crosstalk. *Nat Genet* 2000; **25**: 414-418 [PMID: 10932185]
- 75 **Zvaritch E**, Depreux F, Kraeva N, Loy RE, Goonasekera SA, Boncompagni S, Kraev A, Gramolini AO, Dirksen RT, Franzini-Armstrong C, Seidman CE, Seidman JG, MacLennan DH. An Ryr114895T mutation abolishes Ca²⁺ release channel function and delays development in homozygous offspring of a mutant mouse line. *Proc Natl Acad Sci USA* 2007; **104**: 18537-18542 [PMID: 18003898]
- 76 **Krakowiak PA**, Wassif CA, Kratz L, Cozma D, Kovárová M, Harris G, Grinberg A, Yang Y, Hunter AG, Tsokos M, Kelley RI, Porter FD. Lathosterolosis: an inborn error of human and murine cholesterol synthesis due to lathosterol 5-desaturase deficiency. *Hum Mol Genet* 2003; **12**: 1631-1641 [PMID: 12812989]
- 77 **Huang X**, Litingtung Y, Chiang C. Ectopic sonic hedgehog signaling impairs telencephalic dorsal midline development: implication for human holoprosencephaly. *Hum Mol Genet* 2007; **16**: 1454-1468 [PMID: 17468181]
- 78 **Jeong J**, Mao J, Tenzen T, Kottmann AH, McMahon AP. Hedgehog signaling in the neural crest cells regulates the patterning and growth of facial primordia. *Genes Dev* 2004; **18**: 937-951 [PMID: 15107405]
- 79 **Sang L**, Miller JJ, Corbit KC, Giles RH, Brauer MJ, Otto EA, Baye LM, Wen X, Scales SJ, Kwong M, Huntzicker EG, Sfakianos MK, Sandoval W, Bazan JF, Kulkarni P, Garcia-Gonzalo FR, Seol AD, O'Toole JF, Held S, Reutter HM, Lane WS, Rafiq MA, Noor A, Ansar M, Devi AR, Sheffield VC, Slusarski DC, Vincent JB, Doherty DA, Hildebrandt F, Reiter JF, Jackson PK. Mapping the NPHP-JBTS-MKS protein network reveals ciliopathy disease genes and pathways. *Cell* 2011; **145**: 513-528 [PMID: 21565611 DOI: 10.1016/j.cell.2011.04.019]
- 80 **Fu J**, Ivy Yu HM, Maruyama T, Mirando AJ, Hsu W. Gpr177/mouse Wntless is essential for Wnt-mediated craniofacial and brain development. *Dev Dyn* 2011; **240**: 365-371 [PMID: 21246653 DOI: 10.1002/dvdy.22541]
- 81 **Yamaguchi TP**, Bradley A, McMahon AP, Jones S. A Wnt5a pathway underlies outgrowth of multiple structures in the vertebrate embryo. *Development* 1999; **126**: 1211-1223 [PMID: 10021340]
- 82 **Carroll TJ**, Park JS, Hayashi S, Majumdar A, McMahon AP. Wnt9b plays a central role in the regulation of mesenchymal to epithelial transitions underlying organogenesis of the mammalian urogenital system. *Dev Cell* 2005; **9**: 283-292 [PMID: 16054034]
- 83 **Ferretti E**, Li B, Zewdu R, Wells V, Hebert JM, Karner C, Anderson MJ, Williams T, Dixon J, Dixon MJ, Depew MJ, Selleri L. A conserved Pbx-Wnt-p63-Irf6 regulatory module controls face morphogenesis by promoting epithelial apoptosis. *Dev Cell* 2011; **21**: 627-641 [PMID: 21982646 DOI: 10.1016/j.devcel.2011.08.005]
- 84 **Uz E**, Alanay Y, Aktas D, Vargel I, Gucer S, Tuncbilek G, von Eggeling F, Yilmaz E, Deren O, Posorski N, Ozdag H, Liehr T, Balci S, Alikasifoglu M, Wollnik B, Akarsu NA. Disruption of ALX1 causes extreme microphthalmia and severe facial clefting: expanding the spectrum of autosomal-recessive ALX-related frontonasal dysplasia. *Am J Hum Genet* 2010; **86**: 789-796 [PMID: 20451171 DOI: 10.1016/j.ajhg.2010.04.002]
- 85 **Beverdam A**, Brouwer A, Reijnen M, Korving J, Meijlink F. Severe nasal clefting and abnormal embryonic apoptosis in Alx3/Alx4 double mutant mice. *Development* 2001; **128**: 3975-3986 [PMID: 11641221]
- 86 **Reilly PT**, Afzal S, Gorrini C, Lui K, Bukhman YV, Wakeham A,

- Haight J, Ling TW, Cheung CC, Elia AJ, Turner PV, Mak TW. Acidic nuclear phosphoprotein 32kDa (ANP32)B-deficient mouse reveals a hierarchy of ANP32 importance in mammalian development. *Proc Natl Acad Sci USA* 2011; **108**: 10243-10248 [PMID: 21636789 DOI: 10.1073/pnas.1106211108]
- 87 **Schmahl J**, Raymond CS, Soriano P. PDGF signaling specificity is mediated through multiple immediate early genes. *Nat Genet* 2007; **39**: 52-60 [PMID: 17143286]
- 88 **Abdel-Wahab O**, Gao J, Adli M, Dey A, Trimarchi T, Chung YR, Kuscu C, Hricik T, Ndiaye-Lobry D, Lafave LM, Koche R, Shih AH, Guryanova OA, Kim E, Li S, Pandey S, Shin JY, Telis L, Liu J, Bhatt PK, Monette S, Zhao X, Mason CE, Park CY, Bernstein BE, Aifantis I, Levine RL. Deletion of *Asxl1* results in myelodysplasia and severe developmental defects in vivo. *J Exp Med* 2013; **210**: 2641-2659 [PMID: 24218140 DOI: 10.1084/jem.20131141]
- 89 **Miletich I**, Yu WY, Zhang R, Yang K, Caixeta de Andrade S, Pereira SF, Ohazama A, Mock OB, Buchner G, Sealby J, Webster Z, Zhao M, Bei M, Sharpe PT. Developmental stalling and organ-autonomous regulation of morphogenesis. *Proc Natl Acad Sci USA* 2011; **108**: 19270-19275 [PMID: 22084104 DOI: 10.1073/pnas.1112801108]
- 90 **Aizawa R**, Yamada A, Suzuki D, Iimura T, Kassai H, Harada T, Tsukasaki M, Yamamoto G, Tachikawa T, Nakao K, Yamamoto M, Yamaguchi A, Aiba A, Kamijo R. *Cdc42* is required for chondrogenesis and interdigital programmed cell death during limb development. *Mech Dev* 2012; **129**: 38-50 [PMID: 22387309 DOI: 10.1016/j.mod.2012.02.002]
- 91 **Bosman EA**, Penn AC, Ambrose JC, Kettleborough R, Stemple DL, Steel KP. Multiple mutations in mouse *Chd7* provide models for CHARGE syndrome. *Hum Mol Genet* 2005; **14**: 3463-3476 [PMID: 16207732]
- 92 **Sperry ED**, Hurd EA, Durham MA, Reamer EN, Stein AB, Martin DM. The chromatin remodeling protein CHD7, mutated in CHARGE syndrome, is necessary for proper craniofacial and tracheal development. *Dev Dyn* 2014; **243**: 1055-1066 [PMID: 24975120 DOI: 10.1002/dvdy.24156]
- 93 **Bentham J**, Michell AC, Lockstone H, Andrew D, Schneider JE, Brown NA, Bhattacharya S. Maternal high-fat diet interacts with embryonic *Cited2* genotype to reduce *Pitx2c* expression and enhance penetrance of left-right patterning defects. *Hum Mol Genet* 2010; **19**: 3394-3401 [PMID: 20566713 DOI: 10.1093/hmg/ddq251]
- 94 **Kasper LH**, Boussouar F, Boyd K, Xu W, Biesen M, Reh J, Baudino TA, Cleveland JL, Brindle PK. Two transactivation mechanisms cooperate for the bulk of HIF-1-responsive gene expression. *EMBO J* 2005; **24**: 3846-3858 [PMID: 16237459]
- 95 **Qiu M**, Bulfone A, Ghattas I, Meneses JJ, Christensen L, Sharpe PT, Presley R, Pedersen RA, Rubenstein JL. Role of the *Dlx* homeobox genes in proximodistal patterning of the branchial arches: mutations of *Dlx-1*, *Dlx-2*, and *Dlx-1* and -2 alter morphogenesis of proximal skeletal and soft tissue structures derived from the first and second arches. *Dev Biol* 1997; **185**: 165-184 [PMID: 9187081]
- 96 **Acampora D**, Merlo GR, Paleari L, Zerega B, Postiglione MP, Mantero S, Bober E, Barbieri O, Simeone A, Levi G. Craniofacial, vestibular and bone defects in mice lacking the *Distal-less*-related gene *Dlx5*. *Development* 1999; **126**: 3795-3809 [PMID: 10433909]
- 97 **Depew MJ**, Liu JK, Long JE, Presley R, Meneses JJ, Pedersen RA, Rubenstein JL. *Dlx5* regulates regional development of the branchial arches and sensory capsules. *Development* 1999; **126**: 3831-3846 [PMID: 10433912]
- 98 **Chen CM**, Behringer RR. *Ovca1* regulates cell proliferation, embryonic development, and tumorigenesis. *Genes Dev* 2004; **18**: 320-332 [PMID: 14744934]
- 99 **Xu PX**, Adams J, Peters H, Brown MC, Heaney S, Maas R. *Eya1*-deficient mice lack ears and kidneys and show abnormal apoptosis of organ primordia. *Nat Genet* 1999; **23**: 113-117 [PMID: 10471511]
- 100 **Iida K**, Koseki H, Kakinuma H, Kato N, Mizutani-Koseki Y, Ohuchi H, Yoshioka H, Noji S, Kawamura K, Kataoka Y, Ueno F, Taniguchi N, Yoshida N, Sugiyama T, Miura N. Essential roles of the winged helix transcription factor MFH-1 in aortic arch patterning and skeletogenesis. *Development* 1997; **124**: 4627-4638 [PMID: 9409679]
- 101 **Teng L**, Mundell NA, Frist AY, Wang Q, Labosky PA. Requirement for *Foxd3* in the maintenance of neural crest progenitors. *Development* 2008; **135**: 1615-1624 [PMID: 18367558 DOI: 10.1242/dev.012179]
- 102 **De Felice M**, Ovitt C, Biffali E, Rodriguez-Mallon A, Arra C, Anastassiadis K, Macchia PE, Mattei MG, Mariano A, Schöler H, Macchia V, Di Lauro R. A mouse model for hereditary thyroid dysgenesis and cleft palate. *Nat Genet* 1998; **19**: 395-398 [PMID: 9697704]
- 103 **Wang T**, Tamakoshi T, Uezato T, Shu F, Kanzaki-Kato N, Fu Y, Koseki H, Yoshida N, Sugiyama T, Miura N. Forkhead transcription factor *Foxf2* (*LUN*)-deficient mice exhibit abnormal development of secondary palate. *Dev Biol* 2003; **259**: 83-94 [PMID: 12812790]
- 104 **Byrd NA**, Meyers EN. Loss of *Gbx2* results in neural crest cell patterning and pharyngeal arch artery defects in the mouse embryo. *Dev Biol* 2005; **284**: 233-245 [PMID: 15996652]
- 105 **Huang X**, Goudy SL, Ketova T, Litingtung Y, Chiang C. *Gli3*-deficient mice exhibit cleft palate associated with abnormal tongue development. *Dev Dyn* 2008; **237**: 3079-3087 [PMID: 18816854 DOI: 10.1002/dvdy.21714]
- 106 **Yamada G**, Mansouri A, Torres M, Stuart ET, Blum M, Schultz M, De Robertis EM, Gruss P. Targeted mutation of the murine goosecoid gene results in craniofacial defects and neonatal death. *Development* 1995; **121**: 2917-2922 [PMID: 7555718]
- 107 **Yanagisawa H**, Clouthier DE, Richardson JA, Charité J, Olson EN. Targeted deletion of a branchial arch-specific enhancer reveals a role of *dHAND* in craniofacial development. *Development* 2003; **130**: 1069-1078 [PMID: 12571099]
- 108 **Carter MG**, Johns MA, Zeng X, Zhou L, Zink MC, Mankowski JL, Donovan DM, Baylin SB. Mice deficient in the candidate tumor suppressor gene *Hic1* exhibit developmental defects of structures affected in the Miller-Dieker syndrome. *Hum Mol Genet* 2000; **9**: 413-419 [PMID: 10655551]
- 109 **Ingraham CR**, Kinoshita A, Kondo S, Yang B, Sajan S, Trout KJ, Malik MI, Dunnwald M, Goudy SL, Lovett M, Murray JC, Schutte BC. Abnormal skin, limb and craniofacial morphogenesis in mice deficient for interferon regulatory factor 6 (*Irf6*). *Nat Genet* 2006; **38**: 1335-1340 [PMID: 17041601]
- 110 **Richardson RJ**, Dixon J, Malhotra S, Hardman MJ, Knowles L, Boot-Handford RP, Shore P, Whitmarsh A, Dixon MJ. *Irf6* is a key determinant of the keratinocyte proliferation-differentiation switch. *Nat Genet* 2006; **38**: 1329-1334 [PMID: 17041603]
- 111 **Böse J**, Gruber AD, Helming L, Schiebe S, Wegener I, Hafner M, Beales M, Köntgen F, Lengeling A. The phosphatidylserine receptor has essential functions during embryogenesis but not in apoptotic cell removal. *J Biol* 2004; **3**: 15 [PMID: 15345036]
- 112 **Thomas T**, Corcoran LM, Gugasyan R, Dixon MP, Brodnicki T, Nutt SL, Metcalf D, Voss AK. Monocytic leukemia zinc finger protein is essential for the development of long-term reconstituting hematopoietic stem cells. *Genes Dev* 2006; **20**: 1175-1186 [PMID: 16651658]
- 113 **Denaxa M**, Sharpe PT, Pachnis V. The LIM homeodomain transcription factors *Lhx6* and *Lhx7* are key regulators of mammalian dentition. *Dev Biol* 2009; **333**: 324-336 [PMID: 19591819 DOI: 10.1016/j.ydbio.2009.07.001]
- 114 **Hsu CY**, Chang NC, Lee MW, Lee KH, Sun DS, Lai C, Chang AC. *LUZP* deficiency affects neural tube closure during brain development. *Biochem Biophys Res Commun* 2008; **376**: 466-471 [PMID: 18801334 DOI: 10.1016/j.bbrc.2008.08.170]
- 115 **Verzi MP**, Agarwal P, Brown C, McCulley DJ, Schwarz JJ, Black BL. The transcription factor *MEF2C* is required for craniofacial development. *Dev Cell* 2007; **12**: 645-652 [PMID: 17420000]
- 116 **Jin JZ**, Ding J. Analysis of *Meox-2* mutant mice reveals a novel postfusion-based cleft palate. *Dev Dyn* 2006; **235**: 539-546 [PMID: 16284941]
- 117 **Meester-Smoor MA**, Vermeij M, van Helmond MJ, Molijn AC, van

- Wely KH, Hekman AC, Vermey-Keers C, Riegman PH, Zwarthoff EC. Targeted disruption of the Mnl oncogene results in severe defects in development of membranous bones of the cranial skeleton. *Mol Cell Biol* 2005; **25**: 4229-4236 [PMID: 15870292]
- 118 **Toyo-oka K**, Hirotune S, Gambello MJ, Zhou ZQ, Olson L, Rosenfeld MG, Eisenman R, Hurlin P, Wynshaw-Boris A. Loss of the Max-interacting protein Mnt in mice results in decreased viability, defective embryonic growth and craniofacial defects: relevance to Miller-Dieker syndrome. *Hum Mol Genet* 2004; **13**: 1057-1067 [PMID: 15028671]
- 119 **Winograd J**, Reilly MP, Roe R, Lutz J, Laughner E, Xu X, Hu L, Asakura T, vander Kolk C, Strandberg JD, Semenza GL. Perinatal lethality and multiple craniofacial malformations in MSX2 transgenic mice. *Hum Mol Genet* 1997; **6**: 369-379 [PMID: 9147639]
- 120 **Shi W**, Bain AL, Schwer B, Al-Ejeh F, Smith C, Wong L, Chai H, Miranda MS, Ho U, Kawaguchi M, Miura Y, Finnie JW, Wall M, Heierhorst J, Wicking C, Spring KJ, Alt FW, Khanna KK. Essential developmental, genomic stability, and tumour suppressor functions of the mouse orthologue of hSSB1/NABP2. *PLoS Genet* 2013; **9**: e1003298 [PMID: 23408915 DOI: 10.1371/journal.pgen.1003298]
- 121 **Feldhahn N**, Ferretti E, Robbiani DF, Callen E, Deroubaix S, Selleri L, Nussenzweig A, Nussenzweig MC. The hSSB1 orthologue Obfc2b is essential for skeletogenesis but dispensable for the DNA damage response in vivo. *EMBO J* 2012; **31**: 4045-4056 [PMID: 22940690 DOI: 10.1038/emboj.2012.247]
- 122 **Ross AP**, Mansilla MA, Choe Y, Helminski S, Sturm R, Maute RL, May SR, Hozyasz KK, Wójcicki P, Mostowska A, Davidson B, Adamopoulos IE, Pleasure SJ, Murray JC, Zarbalis KS. A mutation in mouse Pak1ip1 causes orofacial clefting while human PAK1IP1 maps to 6p24 translocation breaking points associated with orofacial clefting. *PLoS One* 2013; **8**: e69333 [PMID: 23935987 DOI: 10.1371/journal.pone.0069333]
- 123 **Zhang B**, Jain S, Song H, Fu M, Heuckeroth RO, Erlich JM, Jay PY, Milbrandt J. Mice lacking sister chromatid cohesion protein PDS5B exhibit developmental abnormalities reminiscent of Cornelia de Lange syndrome. *Development* 2007; **134**: 3191-3201 [PMID: 17652350]
- 124 **Takahara Y**, Tomotsune D, Shirai M, Katoh-Fukui Y, Nishii K, Motaleb MA, Nomura M, Tsuchiya R, Fujita Y, Shibata Y, Higashinakagawa T, Shimada K. Targeted disruption of the mouse homologue of the Drosophila polyhomeotic gene leads to altered anteroposterior patterning and neural crest defects. *Development* 1997; **124**: 3673-3682 [PMID: 9367423]
- 125 **Lancôt C**, Moreau A, Chamberland M, Tremblay ML, Drouin J. Hindlimb patterning and mandible development require the Ptx1 gene. *Development* 1999; **126**: 1805-1810 [PMID: 10101115]
- 126 **Lu MF**, Pressman C, Dyer R, Johnson RL, Martin JF. Function of Rieger syndrome gene in left-right asymmetry and craniofacial development. *Nature* 1999; **401**: 276-278 [PMID: 10499585]
- 127 **Joo JH**, Lee YJ, Munguba GC, Park S, Taxter TJ, Elsagga MY, Jackson MR, Oh SP, Sugrue SP. Role of Pinin in neural crest, dorsal dermis, and axial skeleton development and its involvement in the regulation of Tcf/Lef activity in mice. *Dev Dyn* 2007; **236**: 2147-2158 [PMID: 17654715]
- 128 **Bjork BC**, Turbe-Doan A, Prysak M, Herron BJ, Beier DR. Prdm16 is required for normal palatogenesis in mice. *Hum Mol Genet* 2010; **19**: 774-789 [PMID: 20007998 DOI: 10.1093/hmg/ddp543]
- 129 **Martin JF**, Bradley A, Olson EN. The paired-like homeo box gene MHOX is required for early events of skeletogenesis in multiple lineages. *Genes Dev* 1995; **9**: 1237-1249 [PMID: 7758948]
- 130 **Metzis V**, Courtney AD, Kerr MC, Ferguson C, Rondón Galeano MC, Parton RG, Wainwright BJ, Wicking C. Patched1 is required in neural crest cells for the prevention of orofacial clefts. *Hum Mol Genet* 2013; **22**: 5026-5035 [PMID: 23900075 DOI: 10.1093/hmg/ddt353]
- 131 **Schwab KR**, Patterson LT, Hartman HA, Song N, Lang RA, Lin X, Potter SS. Pygo1 and Pygo2 roles in Wnt signaling in mammalian kidney development. *BMC Biol* 2007; **5**: 15 [PMID: 17425782]
- 132 **Voronina VA**, Kozlov S, Mathers PH, Lewandoski M. Conditional alleles for activation and inactivation of the mouse Rx homeobox gene. *Genesis* 2005; **41**: 160-164 [PMID: 15789424]
- 133 **Mann MB**, Hodges CA, Barnes E, Vogel H, Hassold TJ, Luo G. Defective sister-chromatid cohesion, aneuploidy and cancer predisposition in a mouse model of type II Rothmund-Thomson syndrome. *Hum Mol Genet* 2005; **14**: 813-825 [PMID: 15703196]
- 134 **Aberg T**, Cavender A, Gaikwad JS, Bronckers AL, Wang X, Waltimo-Sirén J, Thesleff I, D'Souza RN. Phenotypic changes in dentition of Runx2 homozygote-null mutant mice. *J Histochem Cytochem* 2004; **52**: 131-139 [PMID: 14688224]
- 135 **Dobreva G**, Chahrouh M, Dautzenberg M, Chirivella L, Kanzler B, Fariñas I, Karsenty G, Grosschedl R. SATB2 is a multifunctional determinant of craniofacial patterning and osteoblast differentiation. *Cell* 2006; **125**: 971-986 [PMID: 16751105]
- 136 **Britanova O**, Depew MJ, Schwark M, Thomas BL, Miletich I, Sharpe P, Tarabykin V. Satb2 haploinsufficiency phenocopies 2q32-q33 deletions, whereas loss suggests a fundamental role in the coordination of jaw development. *Am J Hum Genet* 2006; **79**: 668-678 [PMID: 16960803]
- 137 **Shamblott MJ**, Bugg EM, Lawler AM, Gearhart JD. Craniofacial abnormalities resulting from targeted disruption of the murine Sim2 gene. *Dev Dyn* 2002; **224**: 373-380 [PMID: 12203729]
- 138 **Parada C**, Li J, Iwata J, Suzuki A, Chai Y. CTGF mediates Smad-dependent transforming growth factor β signaling to regulate mesenchymal cell proliferation during palate development. *Mol Cell Biol* 2013; **33**: 3482-3493 [PMID: 23816882 DOI: 10.1128/MCB.00615-13]
- 139 **Papangeli I**, Scambler PJ. Tbx1 genetically interacts with the transforming growth factor- β /bone morphogenetic protein inhibitor Smad7 during great vessel remodeling. *Circ Res* 2013; **112**: 90-102 [PMID: 23011393 DOI: 10.1161/CIRCRESAHA.112.270223]
- 140 **Murray SA**, Oram KF, Gridley T. Multiple functions of Snail family genes during palate development in mice. *Development* 2007; **134**: 1789-1797 [PMID: 17376812]
- 141 **Smits P**, Li P, Mandel J, Zhang Z, Deng JM, Behringer RR, de Crombrughe B, Lefebvre V. The transcription factors L-Sox5 and Sox6 are essential for cartilage formation. *Dev Cell* 2001; **1**: 277-290 [PMID: 11702786]
- 142 **Bi W**, Huang W, Whitworth DJ, Deng JM, Zhang Z, Behringer RR, de Crombrughe B. Haploinsufficiency of Sox9 results in defective cartilage primordia and premature skeletal mineralization. *Proc Natl Acad Sci USA* 2001; **98**: 6698-6703 [PMID: 11371614]
- 143 **Mori-Akiyama Y**, Akiyama H, Rowitch DH, de Crombrughe B. Sox9 is required for determination of the chondrogenic cell lineage in the cranial neural crest. *Proc Natl Acad Sci USA* 2003; **100**: 9360-9365 [PMID: 12878728]
- 144 **Sock E**, Rettig SD, Enderich J, Bösl MR, Tamm ER, Wegner M. Gene targeting reveals a widespread role for the high-mobility-group transcription factor Sox11 in tissue remodeling. *Mol Cell Biol* 2004; **24**: 6635-6644 [PMID: 15254231]
- 145 **Kasberg AD**, Brunskill EW, Steven Potter S. SP8 regulates signaling centers during craniofacial development. *Dev Biol* 2013; **381**: 312-323 [PMID: 23872235 DOI: 10.1016/j.ydbio.2013.07.007]
- 146 **Coré N**, Caubit X, Metchat A, Boned A, Djabali M, Fasano L. Tshz1 is required for axial skeleton, soft palate and middle ear development in mice. *Dev Biol* 2007; **308**: 407-420 [PMID: 17586487]
- 147 **Jerome LA**, Papaioannou VE. DiGeorge syndrome phenotype in mice mutant for the T-box gene, Tbx1. *Nat Genet* 2001; **27**: 286-291 [PMID: 11242110]
- 148 **Zirzow S**, Lüdtké TH, Brons JF, Petry M, Christoffels VM, Kispert A. Expression and requirement of T-box transcription factors Tbx2 and Tbx3 during secondary palate development in the mouse. *Dev Biol* 2009; **336**: 145-155 [PMID: 19769959 DOI: 10.1016/j.ydbio.2009.09.020]
- 149 **Pauws E**, Hoshino A, Bentley L, Prajapati S, Keller C, Hammond P, Martinez-Barbera JP, Moore GE, Stanier P. Tbx22null mice have

- a submucous cleft palate due to reduced palatal bone formation and also display ankyloglossia and choanal atresia phenotypes. *Hum Mol Genet* 2009; **18**: 4171-4179 [PMID: 19648291 DOI: 10.1093/hmg/ddp368]
- 150 **Dixon J**, Brakebusch C, Fässler R, Dixon MJ. Increased levels of apoptosis in the prefusion neural folds underlie the craniofacial disorder, Treacher Collins syndrome. *Hum Mol Genet* 2000; **9**: 1473-1480 [PMID: 10888597]
- 151 **Brewer S**, Feng W, Huang J, Sullivan S, Williams T. Wnt1-Cre-mediated deletion of AP-2alpha causes multiple neural crest-related defects. *Dev Biol* 2004; **267**: 135-152 [PMID: 14975722]
- 152 **Yang A**, Schweitzer R, Sun D, Kaghad M, Walker N, Bronson RT, Tabin C, Sharpe A, Caput D, Crum C, McKeon F. p63 is essential for regenerative proliferation in limb, craniofacial and epithelial development. *Nature* 1999; **398**: 714-718 [PMID: 10227294]
- 153 **Bertuzzi S**, Hindges R, Mui SH, O'Leary DD, Lemke G. The homeodomain protein vax1 is required for axon guidance and major tract formation in the developing forebrain. *Genes Dev* 1999; **13**: 3092-3105 [PMID: 10601035]
- 154 **Nimura K**, Ura K, Shiratori H, Ikawa M, Okabe M, Schwartz RJ, Kaneda Y. A histone H3 lysine 36 trimethyltransferase links Nkx2-5 to Wolf-Hirschhorn syndrome. *Nature* 2009; **460**: 287-291 [PMID: 19483677 DOI: 10.1038/nature08086]
- 155 **Kurima K**, Hertzano R, Gavrilova O, Monahan K, Shpargel KB, Nadaraja G, Kawashima Y, Lee KY, Ito T, Higashi Y, Eisenman DJ, Strome SE, Griffith AJ. A noncoding point mutation of Zeb1 causes multiple developmental malformations and obesity in Twirler mice. *PLoS Genet* 2011; **7**: e1002307 [PMID: 21980308 DOI: 10.1371/journal.pgen.1002307]
- 156 **Jiang Z**, Zhu L, Hu L, Slesnick TC, Pautler RG, Justice MJ, Belmont JW. Zic3 is required in the extra-cardiac perinodal region of the lateral plate mesoderm for left-right patterning and heart development. *Hum Mol Genet* 2013; **22**: 879-889 [PMID: 23184148 DOI: 10.1093/hmg/dds494]
- 157 **Yang Y**, Mahaffey CL, Bérubé N, Frankel WN. Interaction between fidgetin and protein kinase A-anchoring protein AKAP95 is critical for palatogenesis in the mouse. *J Biol Chem* 2006; **281**: 22352-22359 [PMID: 16751186]
- 158 **Cecconi F**, Alvarez-Bolado G, Meyer BI, Roth KA, Gruss P. Apaf1 (CED-4 homolog) regulates programmed cell death in mammalian development. *Cell* 1998; **94**: 727-737 [PMID: 9753320]
- 159 **Dowdle WE**, Robinson JF, Kneist A, Sirerol-Piquer MS, Frints SG, Corbit KC, Zaghloul NA, van Lijnschoten G, Mulders L, Verver DE, Zerres K, Reed RR, Attié-Bitach T, Johnson CA, García-Verdugo JM, Katsanis N, Bergmann C, Reiter JF. Disruption of a ciliary B9 protein complex causes Meckel syndrome. *Am J Hum Genet* 2011; **89**: 94-110 [PMID: 21763481 DOI: 10.1016/j.ajhg.2011.06.003]
- 160 **Atasoy D**, Schoch S, Ho A, Nadasy KA, Liu X, Zhang W, Mukherjee K, Nosyeva ED, Fernandez-Chacon R, Missler M, Kavalali ET, Südhof TC. Deletion of CASK in mice is lethal and impairs synaptic function. *Proc Natl Acad Sci USA* 2007; **104**: 2525-2530 [PMID: 17287346]
- 161 **Yan Y**, Frisén J, Lee MH, Massagué J, Barbacid M. Ablation of the CDK inhibitor p57Kip2 results in increased apoptosis and delayed differentiation during mouse development. *Genes Dev* 1997; **11**: 973-983 [PMID: 9136926]
- 162 **Zhang P**, Liégeois NJ, Wong C, Finegold M, Hou H, Thompson JC, Silverman A, Harper JW, DePinho RA, Elledge SJ. Altered cell differentiation and proliferation in mice lacking p57KIP2 indicates a role in Beckwith-Wiedemann syndrome. *Nature* 1997; **387**: 151-158 [PMID: 9144284]
- 163 **Li Q**, Lu Q, Hwang JY, Büscher D, Lee KF, Izpisua-Belmonte JC, Verma IM. IKK1-deficient mice exhibit abnormal development of skin and skeleton. *Genes Dev* 1999; **13**: 1322-1328 [PMID: 10346820]
- 164 **Park TJ**, Boyd K, Curran T. Cardiovascular and craniofacial defects in Crk-null mice. *Mol Cell Biol* 2006; **26**: 6272-6282 [PMID: 16880535]
- 165 **Lin C**, Fisher AV, Yin Y, Maruyama T, Veith GM, Dhandha M, Huang GJ, Hsu W, Ma L. The inductive role of Wnt-β-Catenin signaling in the formation of oral apparatus. *Dev Biol* 2011; **356**: 40-50 [PMID: 21600200 DOI: 10.1016/j.ydbio.2011.05.002]
- 166 **He F**, Xiong W, Wang Y, Li L, Liu C, Yamagami T, Taketo MM, Zhou C, Chen Y. Epithelial Wnt/β-catenin signaling regulates palatal shelf fusion through regulation of Tgfb3 expression. *Dev Biol* 2011; **350**: 511-519 [PMID: 21185284 DOI: 10.1016/j.ydbio.2010.12.021]
- 167 **Okano J**, Kimura W, Papaionnou VE, Miura N, Yamada G, Shiota K, Sakai Y. The regulation of endogenous retinoic acid level through CYP26B1 is required for elevation of palatal shelves. *Dev Dyn* 2012; **241**: 1744-1756 [PMID: 22972661 DOI: 10.1002/dvdy.23862]
- 168 **Keber R**, Motaln H, Wagner KD, Debeljak N, Rassoulzadegan M, Ačimović J, Rozman D, Horvat S. Mouse knockout of the cholesterologenic cytochrome P450 lanosterol 14alpha-demethylase (Cyp51) resembles Antley-Bixler syndrome. *J Biol Chem* 2011; **286**: 29086-29097 [PMID: 21705796 DOI: 10.1074/jbc.M111.253245]
- 169 **Wassif CA**, Zhu P, Kratz L, Krakowiak PA, Battaile KP, Weight FF, Grinberg A, Steiner RD, Nwokoro NA, Kelley RI, Stewart RR, Porter FD. Biochemical, phenotypic and neurophysiological characterization of a genetic mouse model of RSH/Smith-Lemli-Opitz syndrome. *Hum Mol Genet* 2001; **10**: 555-564 [PMID: 11230174]
- 170 **Fitzky BU**, Moebius FF, Asaoka H, Waage-Baudet H, Xu L, Xu G, Maeda N, Kluckman K, Hiller S, Yu H, Batta AK, Shefer S, Chen T, Salen G, Sulik K, Simoni RD, Ness GC, Glossmann H, Patel SB, Tint GS. 7-Dehydrocholesterol-dependent proteolysis of HMG-CoA reductase suppresses sterol biosynthesis in a mouse model of Smith-Lemli-Opitz/RSH syndrome. *J Clin Invest* 2001; **108**: 905-915 [PMID: 11560960]
- 171 **Adams MK**, Belyaeva OV, Wu L, Kedishvili NY. The retinaldehyde reductase activity of DHRS3 is reciprocally activated by retinol dehydrogenase 10 to control retinoid homeostasis. *J Biol Chem* 2014; **289**: 14868-14880 [PMID: 24733397 DOI: 10.1074/jbc.M114.552257]
- 172 **Billings SE**, Pierzchalski K, Butler Tjaden NE, Pang XY, Trainor PA, Kane MA, Moise AR. The retinaldehyde reductase DHRS3 is essential for preventing the formation of excess retinoic acid during embryonic development. *FASEB J* 2013; **27**: 4877-4889 [PMID: 24005908 DOI: 10.1096/fj.13-227967]
- 173 **Caruana G**, Bernstein A. Craniofacial dysmorphogenesis including cleft palate in mice with an insertional mutation in the discs large gene. *Mol Cell Biol* 2001; **21**: 1475-1483 [PMID: 11238884]
- 174 **Zhang Z**, Wlodarczyk BJ, Niederreither K, Venugopalan S, Florez S, Finnell RH, Amendt BA. Fuz regulates craniofacial development through tissue specific responses to signaling factors. *PLoS One* 2011; **6**: e24608 [PMID: 21935430 DOI: 10.1371/journal.pone.0024608]
- 175 **Schaeper U**, Vogel R, Chmielowiec J, Huelsken J, Rosario M, Birchmeier W. Distinct requirements for Gab1 in Met and EGF receptor signaling in vivo. *Proc Natl Acad Sci USA* 2007; **104**: 15376-15381 [PMID: 17881575]
- 176 **Asada H**, Kawamura Y, Maruyama K, Kume H, Ding RG, Kanbara N, Kuzume H, Sanbo M, Yagi T, Obata K. Cleft palate and decreased brain gamma-aminobutyric acid in mice lacking the 67-kDa isoform of glutamic acid decarboxylase. *Proc Natl Acad Sci USA* 1997; **94**: 6496-6499 [PMID: 9177246]
- 177 **Condie BG**, Bain G, Gottlieb DI, Capecchi MR. Cleft palate in mice with a targeted mutation in the gamma-aminobutyric acid-producing enzyme glutamic acid decarboxylase 67. *Proc Natl Acad Sci USA* 1997; **94**: 11451-11455 [PMID: 9326630]
- 178 **Li JP**, Gong F, Hagner-McWhirter A, Forsberg E, Abrink M, Kisilevsky R, Zhang X, Lindahl U. Targeted disruption of a murine glucuronyl C5-epimerase gene results in heparan sulfate lacking L-iduronic acid and in neonatal lethality. *J Biol Chem* 2003; **278**: 28363-28366 [PMID: 12788935]
- 179 **Miyaoka Y**, Tanaka M, Imamura T, Takada S, Miyajima A. A novel regulatory mechanism for Fgf18 signaling involving cysteine-rich

- FGF receptor (Cfr) and delta-like protein (Dlk). *Development* 2010; **137**: 159-167 [PMID: 20023171 DOI: 10.1242/dev.041574]
- 180 **Saxton TM**, Cheng AM, Ong SH, Lu Y, Sakai R, Cross JC, Pawson T. Gene dosage-dependent functions for phosphotyrosine-Grb2 signaling during mammalian tissue morphogenesis. *Curr Biol* 2001; **11**: 662-670 [PMID: 11369229]
 - 181 **Liu KJ**, Arron JR, Stankunas K, Crabtree GR, Longaker MT. Chemical rescue of cleft palate and midline defects in conditional GSK-3beta mice. *Nature* 2007; **446**: 79-82 [PMID: 17293880]
 - 182 **Bullock SL**, Fletcher JM, Beddington RS, Wilson VA. Renal agenesis in mice homozygous for a gene trap mutation in the gene encoding heparan sulfate 2-sulfotransferase. *Genes Dev* 1998; **12**: 1894-1906 [PMID: 9637690]
 - 183 **Keady BT**, Samtani R, Tobita K, Tsuchya M, San Agustin JT, Folliot JA, Jonassen JA, Subramanian R, Lo CW, Pazour GJ. IFT25 links the signal-dependent movement of Hedgehog components to intraflagellar transport. *Dev Cell* 2012; **22**: 940-951 [PMID: 22595669 DOI: 10.1016/j.devcel.2012.04.009]
 - 184 **Grashoff C**, Aszodi A, Sakai T, Hunziker EB, Fässler R. Integrin-linked kinase regulates chondrocyte shape and proliferation. *EMBO Rep* 2003; **4**: 432-438 [PMID: 12671688]
 - 185 **Sohaskey ML**, Yu J, Diaz MA, Plaas AH, Harland RM. JAWS coordinates chondrogenesis and synovial joint positioning. *Development* 2008; **135**: 2215-2220 [PMID: 18539921 DOI: 10.1242/dev.019950]
 - 186 **Jacoby M**, Cox JJ, Gayral S, Hampshire DJ, Ayub M, Blockmans M, Pernot E, Kisseleva MV, Compère P, Schiffmann SN, Gergely F, Riley JH, Pérez-Morga D, Woods CG, Schurmans S. INPPE mutations cause primary cilium signaling defects, ciliary instability and ciliopathies in human and mouse. *Nat Genet* 2009; **41**: 1027-1031 [PMID: 19668215 DOI: 10.1038/ng.427]
 - 187 **Brugmann SA**, Allen NC, James AW, Mekonnen Z, Madan E, Helms JA. A primary cilia-dependent etiology for midline facial disorders. *Hum Mol Genet* 2010; **19**: 1577-1592 [PMID: 20106874 DOI: 10.1093/hmg/ddq030]
 - 188 **Song Z**, Liu C, Iwata J, Gu S, Suzuki A, Sun C, He W, Shu R, Li L, Chai Y, Chen Y. Mice with Tak1 deficiency in neural crest lineage exhibit cleft palate associated with abnormal tongue development. *J Biol Chem* 2013; **288**: 10440-10450 [PMID: 23460641 DOI: 10.1074/jbc.M112.432286]
 - 189 **Yumoto K**, Thomas PS, Lane J, Matsuzaki K, Inagaki M, Ninomiya-Tsuji J, Scott GJ, Ray MK, Ishii M, Maxson R, Mishina Y, Kaartinen V. TGF- β -activated kinase 1 (Tak1) mediates agonist-induced Smad activation and linker region phosphorylation in embryonic craniofacial neural crest-derived cells. *J Biol Chem* 2013; **288**: 13467-13480 [PMID: 23546880 DOI: 10.1074/jbc.M112.431775]
 - 190 **Kowalczyk MS**, Hughes JR, Babbs C, Sanchez-Pulido L, Szumska D, Sharpe JA, Sloane-Stanley JA, Morriss-Kay GM, Smoot LB, Roberts AE, Watkins H, Bhattacharya S, Gibbons RJ, Ponting CP, Wood WG, Higgs DR. Nprl3 is required for normal development of the cardiovascular system. *Mamm Genome* 2012; **23**: 404-415 [PMID: 22538705 DOI: 10.1007/s00335-012-9398-y]
 - 191 **Ferrante MI**, Zullo A, Barra A, Bimonte S, Messaddeq N, Studer M, Dollé P, Franco B. Oral-facial-digital type I protein is required for primary cilia formation and left-right axis specification. *Nat Genet* 2006; **38**: 112-117 [PMID: 16311594]
 - 192 **Lu S**, Lu LY, Liu MF, Yuan QJ, Sham MH, Guan XY, Huang JD. Cerebellar defects in Pdss2 conditional knockout mice during embryonic development and in adulthood. *Neurobiol Dis* 2012; **45**: 219-233 [PMID: 21871565 DOI: 10.1016/j.nbd.2011.08.006]
 - 193 **Keller P**, Tremml G, Rosti V, Bessler M. X inactivation and somatic cell selection rescue female mice carrying a Piga-null mutation. *Proc Natl Acad Sci USA* 1999; **96**: 7479-7483 [PMID: 10377440]
 - 194 **Kinoshita M**, Era T, Jakt LM, Nishikawa S. The novel protein kinase Vlk is essential for stromal function of mesenchymal cells. *Development* 2009; **136**: 2069-2079 [PMID: 19465597 DOI: 10.1242/dev.026435]
 - 195 **Imuta Y**, Nishioka N, Kiyonari H, Sasaki H. Short limbs, cleft palate, and delayed formation of flat proliferative chondrocytes in mice with targeted disruption of a putative protein kinase gene, Pkdcc (AW548124). *Dev Dyn* 2009; **238**: 210-222 [PMID: 19097194 DOI: 10.1002/dvdy.21822]
 - 196 **Yang T**, Jia Z, Bryant-Pike W, Chandrasekhar A, Murray JC, Fritzsche B, Bassuk AG. Analysis of PRICKLE1 in human cleft palate and mouse development demonstrates rare and common variants involved in human malformations. *Mol Genet Genomic Med* 2014; **2**: 138-151 [PMID: 24689077 DOI: 10.1002/mggg.3.53]
 - 197 **Ng JM**, Vrieling H, Sugawara K, Ooms MP, Grootegoed JA, Vreeburg JT, Visser P, Beems RB, Gorgels TG, Hanaoka F, Hoeijmakers JH, van der Horst GT. Developmental defects and male sterility in mice lacking the ubiquitin-like DNA repair gene mHR23B. *Mol Cell Biol* 2002; **22**: 1233-1245 [PMID: 11809813]
 - 198 **Jin YR**, Turcotte TJ, Crocker AL, Han XH, Yoon JK. The canonical Wnt signaling activator, R-spondin2, regulates craniofacial patterning and morphogenesis within the branchial arch through ectodermal-mesenchymal interaction. *Dev Biol* 2011; **352**: 1-13 [PMID: 21237142 DOI: 10.1016/j.ydbio.2011.01.004]
 - 199 **Nam JS**, Park E, Turcotte TJ, Palencia S, Zhan X, Lee J, Yun K, Funk WD, Yoon JK. Mouse R-spondin2 is required for apical ectodermal ridge maintenance in the hindlimb. *Dev Biol* 2007; **311**: 124-135 [PMID: 17904116]
 - 200 **Insolera R**, Shao W, Airik R, Hildebrandt F, Shi SH. SDCCAG8 regulates pericentriolar material recruitment and neuronal migration in the developing cortex. *Neuron* 2014; **83**: 805-822 [PMID: 25088364 DOI: 10.1016/j.neuron.2014.06.029]
 - 201 **Wojcik SM**, Katsurabayashi S, Guillemin I, Friauf E, Rosenmund C, Brose N, Rhee JS. A shared vesicular carrier allows synaptic corelease of GABA and glycine. *Neuron* 2006; **50**: 575-587 [PMID: 16701208]
 - 202 **Oh WJ**, Westmoreland JJ, Summers R, Condie BG. Cleft palate is caused by CNS dysfunction in Gad1 and Viaat knockout mice. *PLoS One* 2010; **5**: e9758 [PMID: 20333300 DOI: 10.1371/journal.pone.0009758]
 - 203 **Yang X**, Kilgallen S, Andreeva V, Spicer DB, Pinz I, Friesel R. Conditional expression of Spry1 in neural crest causes craniofacial and cardiac defects. *BMC Dev Biol* 2010; **10**: 48 [PMID: 20459789 DOI: 10.1186/1471-213X-10-48]
 - 204 **Welsh IC**, Hagge-Greenberg A, O'Brien TP. A dosage-dependent role for Spry2 in growth and patterning during palate development. *Mech Dev* 2007; **124**: 746-761 [PMID: 17693063]
 - 205 **Alkuraya FS**, Saadi I, Lund JJ, Turbe-Doan A, Morton CC, Maas RL. SUMO1 haploinsufficiency leads to cleft lip and palate. *Science* 2006; **313**: 1751 [PMID: 16990542]
 - 206 **Qu X**, Pan Y, Carbe C, Powers A, Grobe K, Zhang X. Glycosaminoglycan-dependent restriction of FGF diffusion is necessary for lacrimal gland development. *Development* 2012; **139**: 2730-2739 [PMID: 22745308 DOI: 10.1242/dev.079236]
 - 207 **Cui C**, Chatterjee B, Lozito TP, Zhang Z, Francis RJ, Yagi H, Swanhart LM, Sanker S, Francis D, Yu Q, San Agustin JT, Puligilla C, Chatterjee T, Tansey T, Liu X, Kelley MW, Spiliotis ET, Kwiatkowski AV, Tuan R, Pazour GJ, Hukriede NA, Lo CW. Wdpcp, a PCP protein required for ciliogenesis, regulates directional cell migration and cell polarity by direct modulation of the actin cytoskeleton. *PLoS Biol* 2013; **11**: e1001720 [PMID: 24302887 DOI: 10.1371/journal.pbio.1001720]
 - 208 **Li SW**, Prockop DJ, Helminen H, Fässler R, Lapveteläinen T, Kiraly K, Peltari A, Arokoski J, Lui H, Arita M. Transgenic mice with targeted inactivation of the Col2 alpha 1 gene for collagen II develop a skeleton with membranous and periosteal bone but no endochondral bone. *Genes Dev* 1995; **9**: 2821-2830 [PMID: 7590256]
 - 209 **Costell M**, Gustafsson E, Aszodi A, Mörgelin M, Bloch W, Hunziker E, Addicks K, Timpl R, Fässler R. Perlecan maintains the integrity of cartilage and some basement membranes. *J Cell Biol* 1999; **147**: 1109-1122 [PMID: 10579729]
 - 210 **Arikawa-Hirasawa E**, Watanabe H, Takami H, Hassell JR, Yamada

- Y. Perlecan is essential for cartilage and cephalic development. *Nat Genet* 1999; **23**: 354-358 [PMID: 10545953]
- 211 **Masago Y**, Hosoya A, Kawasaki K, Kawano S, Nasu A, Toguchida J, Fujita K, Nakamura H, Kondoh G, Nagata K. The molecular chaperone Hsp47 is essential for cartilage and endochondral bone formation. *J Cell Sci* 2012; **125**: 1118-1128 [PMID: 22492985 DOI: 10.1242/jcs.089748]
- 212 **Rainger J**, van Beusekom E, Ramsay JK, McKie L, Al-Gazali L, Pallotta R, Saponari A, Branney P, Fisher M, Morrison H, Bicknell L, Gautier P, Perry P, Sokhi K, Sexton D, Bardakjian TM, Schneider AS, Elcioglu N, Ozkinay F, Koenig R, Mégarbané A, Semerci CN, Khan A, Zafar S, Hennekam R, Sousa SB, Ramos L, Garavelli L, Furga AS, Wischmeijer A, Jackson IJ, Gillissen-Kaesbach G, Brunner HG, Wieczorek D, van Bokhoven H, Fitzpatrick DR. Loss of the BMP antagonist, SMOC-1, causes Ophthalmo-acromelic (Waardenburg Anophthalmia) syndrome in humans and mice. *PLoS Genet* 2011; **7**: e1002114 [PMID: 21750680 DOI: 10.1371/journal.pgen.1002114]

P- Reviewer: Freire-De-Lima CG, Gokul S, Yeligar SM, Zhang L

S- Editor: Ji FF **L- Editor:** A **E- Editor:** Wang CH





Published by **Baishideng Publishing Group Inc**

8226 Regency Drive, Pleasanton, CA 94588, USA

Telephone: +1-925-223-8242

Fax: +1-925-223-8243

E-mail: bpgoffice@wjgnet.com

Help Desk: <http://www.wjgnet.com/esps/helpdesk.aspx>

<http://www.wjgnet.com>

