



2016 Liver Transplantation: Global view

Liver transplantation in acute liver failure: A challenging scenario

Manuel Mendizabal, Marcelo Oscar Silva

Manuel Mendizabal, Marcelo Oscar Silva, Hepatology and Liver Transplant Unit, Hospital Universitario Austral, Pilar B1629AHJ, Argentina

Author contributions: Mendizabal M designed the outline, selected the articles for review, and wrote the manuscript; Silva MO approved the manuscript and rewrote some sections of the text.

Conflict-of-interest statement: The authors have no conflict of interest to declare.

Open-Access: This article is an open-access article which was selected by an in-house editor and fully peer-reviewed by external reviewers. It is distributed in accordance with the Creative Commons Attribution Non Commercial (CC BY-NC 4.0) license, which permits others to distribute, remix, adapt, build upon this work non-commercially, and license their derivative works on different terms, provided the original work is properly cited and the use is non-commercial. See: <http://creativecommons.org/licenses/by-nc/4.0/>

Correspondence to: Manuel Mendizabal, MD, Staff Hepatologist, Hepatology and Liver Transplant Unit, Hospital Universitario Austral, Avenida Juan D. Perón 1500, Pilar B1629AHJ, Argentina. mmendizaba@cas.austral.edu.ar
Telephone: +54-230-4482884
Fax: +54-230-4482236

Received: April 28, 2015

Peer-review started: May 5, 2015

First decision: September 29, 2015

Revised: October 14, 2015

Accepted: November 19, 2015

Article in press: November 19, 2015

Published online: January 28, 2016

Abstract

Acute liver failure is a critical medical condition defined as rapid development of hepatic dysfunction associated with encephalopathy. The prognosis in these patients is highly variable and depends on the etiology, interval

between jaundice and encephalopathy, age, and the degree of coagulopathy. Determining the prognosis for this population is vital. Unfortunately, prognostic models with both high sensitivity and specificity for prediction of death have not been developed. Liver transplantation has dramatically improved survival in patients with acute liver failure. Still, 25% to 45% of patients will survive with medical treatment. The identification of patients who will eventually require liver transplantation should be carefully addressed through the combination of current prognostic models and continuous medical assessment. The concerns of inaccurate selection for transplantation are significant, exposing the recipient to a complex surgery and lifelong immunosuppression. In this challenging scenario, where organ shortage remains one of the main problems, alternatives to conventional orthotopic liver transplantation, such as living-donor liver transplantation, auxiliary liver transplant, and ABO-incompatible grafts, should be explored. Although overall outcomes after liver transplantation for acute liver failure are improving, they are not yet comparable to elective transplantation.

Key words: Encephalopathy; Fulminant hepatic failure; Liver transplantation; Outcome; Prognostic score

© The Author(s) 2016. Published by Baishideng Publishing Group Inc. All rights reserved.

Core tip: Acute liver failure is the most dramatic clinical situation in which liver transplantation is performed. In this manuscript, we describe the timing and benefits of this procedure by analyzing the different prognostic scores and surgical techniques.

Mendizabal M, Silva MO. Liver transplantation in acute liver failure: A challenging scenario. *World J Gastroenterol* 2016; 22(4): 1523-1531 Available from: URL: <http://www.wjgnet.com/1007-9327/full/v22/i4/1523.htm> DOI: <http://dx.doi.org/10.3748/wjg.v22.i4.1523>

LIVER TRANSPLANTATION IN ACUTE LIVER FAILURE: A CHALLENGING SCENARIO

Acute liver failure (ALF) is characterized by a rapid deterioration of the liver function (international normalized ratio ≥ 1.5) and the development of hepatic encephalopathy within 26 wk of jaundice in a patient with no previous history of liver disease^[1]. ALF accounts for 8% of indications for liver transplantation (LT) in Europe and 7% in the United States^[2,3]. Globally, viral hepatitis infections are probably responsible for the majority of cases of ALF. Hepatitis A and E are common in developing countries, while hepatitis B is a common cause in some Asian and South American countries^[4-6]. In developed countries, drug-induced liver injury, especially with paracetamol, accounts for approximately 50% of cases^[7]. Before the era of LT, ALF mortality rates ranged between 80% and 85%^[8]. Advances in the field of critical care management and LT, however, have dramatically improved survival outcomes for patients with ALF^[9,10]. Current LT results are especially good considering the emergency context of the surgical indication, with one- and five-year patient survival rates of 80% and 75%, respectively^[9,10]. Nevertheless, LT candidate selection in the ALF setting must be carefully addressed. Risks of emergency transplantation in patients with evolving or established multiple organ failure (MOF) must be balanced against survival with continued medical supportive care alone. In this review, we discuss current decision-making strategies used to indicate LT in this challenging clinical scenario.

Timing of LT

Several prognostic evaluation systems use different variables correlating with outcome in ALF patients to identify patients with high likelihood of mortality^[11-15] (Table 1). When evaluating the accuracy of a prognostic score to identify those patients who will die if an LT is not performed, one should consider the positive and negative predictive values. The positive predictive value is the probability that a positive prognostic test will truly reflect the need for an LT. On the other hand, the negative predictive value will describe which patients will survive without LT. Four variables are considered key determinants to assess prognosis: etiology, interval between jaundice and encephalopathy, age, and synthetic markers of disease severity^[16,17]. Most importantly, prognostic models need to be able to capture critical data at crucial time points during the course of disease^[18]. Many prognostic models are used worldwide, most based on historic cohorts of patients not receiving a transplant. Although details among the systems differ, they share many common variables (Table 2). Unfortunately, prognostic models have limitations, and their predictive accuracies vary^[16,19].

Described in 1989, the King's College Hospital criteria (KCC) are amongst the most common set of tests applied for patient selection, and were the first to distinguish between paracetamol-induced and other ALF etiologies^[11]. The criteria have a clinically acceptable specificity, in that patients fulfilling the criteria are very likely to die if they do not receive transplants. Conversely, sensitivity is less, as a certain number of patients not meeting criteria do not survive^[20,21]. A recent meta-analysis from 18 studies analyzing KCC performance in patients with nonparacetamol-induced ALF, totaling 1105 patients, reported an overall sensitivity of 68% and a specificity of 82%^[22]. Interestingly, specificity increased to 88% when criteria were applied dynamically, and to 93% in patients with more advanced encephalopathy. Sensitivity fell in studies published after 2005, suggesting modern medical management of ALF may affect KCC performance^[22]. Two separate meta-analyses studied paracetamol-induced ALF reporting an overall sensitivity of 58%-69% and specificity of 92%-94%^[20,23]. Again, sensitivity was considered to be low as a result of non-dynamic application of the criteria^[23]. The model has been refined and both specificity and sensitivity improved, for example, with the inclusion of lactate^[24]. In a cohort of patients with paracetamol-induced ALF, the addition of the postresuscitation lactate concentration to the established KCC increased the ability to identify patients unlikely to survive unless they received transplants^[24]. The rationale for including lactate as a prognostic marker is based on the fact that hyperlactatemia reflects not only systemic tissue dysfunction, but, most importantly, substantially decreased hepatic clearance of lactate. Two significant points to remember regarding KCC application are: first, its use is clearly most effective in patients with high-grade encephalopathy; and second, KCC were not formulated as part of a static model, but rather as a dynamic evaluation system, and therefore, their most effective application will arise from continued patient monitoring.

The Clichy criteria were described in 1986, and originated from the study of a cohort of 115 patients with fulminant hepatitis B^[12]. The model is based on decreased levels of factor V, age, and the presence of grade 3-4 encephalopathy, with a positive predictive value of 82% and a negative predictive value of 98%^[12]. Validation studies have shown the Clichy criteria to be not only less accurate than originally reported, but also less accurate than KCC for predicting outcome^[25,26]. Seeking a better alternative to the KCC and Clichy criteria, the following scores were also evaluated: the Sequential Organ Failure Assessment (SOFA), and the Acute Physiology and Chronic Health Evaluation II (APACHE II). The rationale of evaluating non-liver-specific scores is based on the uncontrolled inflammatory response observed in patients with ALF. The SOFA and APACHE II scores are strongly

Table 1 Comparison between different prognostic scoring systems for acute liver failure

Ref.	n	Etiologies	Parameters		Comments
			Laboratory	Clinical	
Bernuau <i>et al</i> ^[8] (1986)	115	Hepatitis B	Factor V levels	Age	Clichy criteria
O'Grady <i>et al</i> ^[11] (1989)	332	Non-paracetamol	Bilirubin, INR	Age, etiology, jaundice to encephalopathy > 7	First model to differentiate between paracetamol-induced and other etiologies
	431	Paracetamol	Arterial pH, Creatinine, INR, grade 3-4 encephalopathy		
Bismuth <i>et al</i> ^[63] (1996)	139	All patients	Factor V levels	Age, grade 3-4 encephalopathy	
Mitchell <i>et al</i> ^[30] (1998)	102	Paracetamol	APACHE II		APACHE II score > 15: sensitivity 82%, specificity 98%; similar to KCC
Schmidt <i>et al</i> ^[37] (2002)	125	Paracetamol	Serum phosphate > 1.2 mmol/L		Applicable from day 2-4 after overdose; sensitivity 89%, specificity 100%; superior to KCC
Bernal <i>et al</i> ^[24] (2002)	210	Paracetamol	Lactate		Addition of post resuscitation lactate to KCC improved sensitivity
Larson <i>et al</i> ^[46] (2005)	275	Paracetamol	APACHE II		APACHE II score > 20: sensitivity 68%, specificity 87%; superior to KCC
Ganzert <i>et al</i> ^[44] (2005)	198	<i>Amanita phalloides</i>	Prothrombin time < 25%, creatinine > 1.2 mg/dL		Applicable from day 3 after ingestion; sensitivity 100%, specificity 98%
Schmidt <i>et al</i> ^[36] (2005)	239	Paracetamol	α -fetoprotein		Dynamic α -fetoprotein measurement
Schiødt <i>et al</i> ^[41] (2005)	252	All patients	Actin-free Gc-globulin		Cutoff level 40 mL/L; similar prognostic information as KCC in a single measurement admission
Taylor <i>et al</i> ^[45] (2006)	29	Hepatitis A	ALT \leq 2600 IU/L, creatinine \geq 2.0 mg/dL	Intubation, vasopressors requirement	Superior to MELD score and KCC
Schiødt <i>et al</i> ^[35] (2007)	206	All patients	α -fetoprotein ratio day 1 and 3		Ratio \geq 1 indicated better prognosis
Antoniades <i>et al</i> ^[40] (2006)	70	Paracetamol	Monocyte HLA-DR \leq 15%		
Yantorno <i>et al</i> ^[13] (2007)	64	Non-paracetamol	MELD score		MELD superior to KCC and Clichy criteria
Dhiman <i>et al</i> ^[32] (2007)	144	Acute viral hepatitis	Creatinine \geq 1.5 mg/dL, prothrombin time \geq 35 s	Age \geq 50, jaundice to encephalopathy > 7, cerebral edema, grade 3-4 encephalopathy	Presence of any of three variables superior to KCC and MELD score
Schimdt and Larsen ^[31] (2007)	460	Paracetamol	Serial MELD score		MELD score did not provide more information than KCC or INR alone
Escudie <i>et al</i> ^[43] (2007)	27	<i>Amanita phalloides</i>	INR > 6 at day 4	Ingestion diarrhea interval < 8 h	Encephalopathy not needed to decide transplantation
Volkman <i>et al</i> ^[38] (2008)	70	All patients	Caspase activation (measured by Cytokeratin 18 fragments, M30 and M65)		Caspase activity might predict spontaneous recovery
Mochida <i>et al</i> ^[15] (2008)	698	All patients	Prothrombin time < 10%, bilirubin \geq 18 mg/dL	Age \geq 45, jaundice to encephalopathy \geq 11 d	Re-evaluates within 5 d if patient remains alive and liver transplantation was not performed
Hadem <i>et al</i> ^[14] (2008)	102	All patients	Bilirubin, lactate	Etiology	Bile score, better prognostic accuracy than MELD score or KCC
Bechmann <i>et al</i> ^[33] (2010)	68	All patients	Cytokeratin 18 (M65), creatinine, INR		MELD-M65 score
Westbrook <i>et al</i> ^[42] (2010)	54	Pregnancy-related	Lactate \geq 2.8 mg/dL	Encephalopathy	Sensitivity 90%, specificity 86%; superior to KCC
Cholongitas <i>et al</i> ^[28] (2012)	125	Paracetamol	SOFA score, APACHE II score, KCC, MELD		SOFA score was superior to KCC, MELD and APACHE II
Rutherford <i>et al</i> ^[34] (2012)	500	All patients	INR, bilirubin, phosphorus \geq 3.7 mg/dL, log ₁₀ M30	Encephalopathy grade	ALFSG index sensitivity 86% and specificity 65%; superior to MELD score and KCC
Mendizabal <i>et al</i> ^[6] (2014)	154	Non-paracetamol	MELD score		MELD superior to KCC and Clichy criteria

ALFSG: Acute liver failure study group; ALT: Alanine aminotransferase; APACHE: Acute physiology and chronic evaluation; INR: International normalized ratio; KCC: King's College Criteria; MELD: Model for end-stage liver disease.

associated with MOF and blood lactate levels^[27]. In a retrospective study that included 125 patients with paracetamol-induced ALF, assessment of the prognosis

was performed with KCC, Model for End-Stage Liver Disease (MELD), SOFA, and APACHE II^[28]. The SOFA score performed better than the other prognostic

Table 2 Variables that correlate with outcome in patients with acute liver failure

Clinical/demographic	Serologic	
Age	Bilirubin	Phosphate
Encephalopathy	Creatinine	Ketone body ratio
Etiology	INR/factor V	α -fetoprotein
Cerebral edema	Lactate	Cell death markers
Jaundice to encephalopathy interval	pH	(M30, M65)
Mechanical ventilation	Gc globulin	Monocyte HLA-DR
Vasopressors requirement		
Functional/physiologic	Morphologic	
APACHE II	Hepatocyte necrosis	
Hepatic artery resistance index changes	Liver volume	

scores with an area under the curve of 0.79, sensitivity of 67%, and specificity of 80%. Interestingly, temporal changes in SOFA score were also evaluated. A SOFA score > 6 by 72 h or > 7 by 96 h post-paracetamol overdose predicted death/transplantation with negative predictive values of 97% and 99%, respectively^[29]. The APACHE II model has similar sensitivity and specificity to the KCC, but cannot be applied as early after admission^[30].

More recently, interest has been focused on application of the MELD score to predict ALF outcomes in both paracetamol-induced and nonparacetamol-induced groups. However, a consistent advantage has not been conclusively demonstrated^[6,13,19,31,32]. In order to improve the predictive value of MELD scores, a prognostic score substituting M65 (a cell death-associated marker) for bilirubin was described^[33]. Fatal outcome predictability with the MELD-M65 score was superior to both classic MELD and KCC^[33]. Characterization of cell death-related serum factors were further explored. The Acute Liver Failure Study Group proposed an index based on a composite of different clinical markers on admission (international normalized ratio, coma grade, bilirubin, and phosphorus level) with an additional apoptosis marker: M30^[34]. This index outperformed MELD and KCC, improving sensitivity to 86%, but reducing specificity to only 65%. Markers of cell death or apoptosis are encouraging, though their use is technically more complex, and published results still need to be confirmed in further studies. Alternative prognostic variables have also been suggested to improve the selection of transplant candidates. A wide variety of blood markers have been proposed including: α -fetoprotein^[35,36], serum phosphate^[37], apoptosis and necrosis markers^[38,39], monocyte HLA-DR expression^[40], and Gc-globulin levels^[41]. However, widespread clinical application of these blood markers and other prognostic scores are limited due to lack of external validation and general availability^[42-45].

Ideally, prognostic models should be simple, accurate, and rapidly measured with high positive and

Table 3 Determinants associated with poor outcomes following liver transplantation in patients with acute liver failure

Demographic	Graft-related	Clinical
Age > 45 yr	Donor > 60 yr	Vasopressors
Male sex	ABO mismatch	Creatinine
Non-viral etiology	Steatosis	Body mass index ≥ 30 kg/m ²
	Reduced liver	

negative predictive values, which should not lower specificity. In order to improve LT candidate selection, prognostic models should be applied continuously over time, as part of overall clinical monitoring by experienced multidisciplinary transplant teams.

LT

In the transplant era, overall survival in patients with ALF underwent considerable improvement. Still, nearly 30% of patients with ALF die^[6,9,10]. Reasons restricting transplantation of more patients include: organ shortage, clinical complications, substance abuse issues, or involvement of other organ systems (*i.e.*, heart failure, malignancy). Outcomes differ between regions mostly due to differences in etiology and to access to a suitable organ (Figure 1). In Argentina, for example, we reported a large ALF series with no cases of paracetamol toxicity, in clear contrast to series from the United States and the United Kingdom^[6,7,9]. ALF associated with paracetamol toxicity has not only a better prognosis than most other etiologies, but is often associated with concomitant psychosocial issues, explaining why general transplantation rates for ALF in the United States are lower than in Argentina, at 24% and 54%, respectively^[6,7,46].

One-year survival following LT in ALF patients ranges between 74% and 84%. These results are worse than those of patients grafted for other indications^[7,10,47]. In spite of this fact, outcomes remain better compared to a 64% one-year survival described in patients in ICU immediately prior to LT, and to 54% observed in patients on mechanical ventilation at the time of organ allocation^[7,47]. Most deaths occur in the first three months after surgery, from neurologic complications, MOF, or sepsis^[10,48-50]. Great efforts have been made to determine which factors affect outcome (Table 3). Those better predicting survival without transplant are not the same as those predicting survival after LT. Graft quality and recipient clinical condition were described as the most relevant factors influencing transplant outcome in this setting^[10,50,51]. Multivariate analysis of variables in the United Network for Organ Sharing (UNOS) database identified four factors associated with poor outcome: recipient age > 50 years, history of life support, body mass index ≥ 30 kg/m², and serum creatinine > 2.0 mg/dL^[50]. Five-year survival ranged from 47% for those with all four variables, to 83% for those with none. Limitations

Table 4 One-year survival following liver transplantation depending on the type of graft used

	OLT ^[3]	LDLT ^[35,39]	ABO-incompatible ^[50]	Auxiliary LT ^[45]
Graft	73%	70%	64%	53%
Patient	79%	70%-79%	69%	62%

LDLT: Living-donor liver transplantation; LT: Liver transplantation; OLT: Orthotopic liver transplantation.

identified were that the high-risk group accounted for only 2% of the study population, that cumulative effects of adverse graft factors were not considered, and that the analysis included patients who underwent LT, exclusively.

Data from the European Liver Transplant Registry (ELTR) were analyzed, including 4903 patients with ALF^[10]. Despite certain limitations of the multivariate model, authors identified major risk factors with a detrimental impact on post-LT mortality as: use of reduced-sized organs, recipient age > 50 years, male sex, donor age > 60 years, and incompatible ABO group matching. A prognostic model constructed for patients > 50 years of age foreseeably indicated that presence of multiple risk factors (ABO incompatibility, male recipient, use of partial graft, and donor age > 60 years) had negative impact both on patient and graft survival. In this model, a male patient over 50 years of age receiving a graft from a donor older than 60 years, for example, would have an estimated 57% risk of death or graft loss at one year. Limitations of the ELTR database relate to insufficient information on pretransplant renal function, encephalopathy grade, brain edema, and/or mechanical ventilation, all of which could improve LT prognosis assessment.

King's College Hospital presented their experience in 310 patients with ALF over a ten-year period^[51]. Four variables associated with 90-d post-LT mortality were observed, namely: recipient age > 45 years, vasopressor requirement, transplantation era, and use of high-risk grafts. The latter were defined by the presence of any two of the following: donor age > 60 years, liver steatosis, ABO non-identical match, and use of non-whole graft. Interestingly, older recipient age presented the strongest link to increased mortality; 90-d survival was only 47%, compared to 80% in the younger cohort. An age-related reduction in physiologic hepatic reserve was proposed to explain the higher mortality rate observed in this group^[51].

Based on pre-LT evaluation of the factors described, transplant teams should attempt to establish when an outcome might be unacceptable. Recipient and donor factors associated with poor post-LT outcomes are similar in transplants performed electively or secondary to ALF. Particular causes of graft failure or patient death could potentially explain the gap in survival rates in ALF compared to other LT indications, especially during the first three months following surgery. For example, multisystem disorder triggered

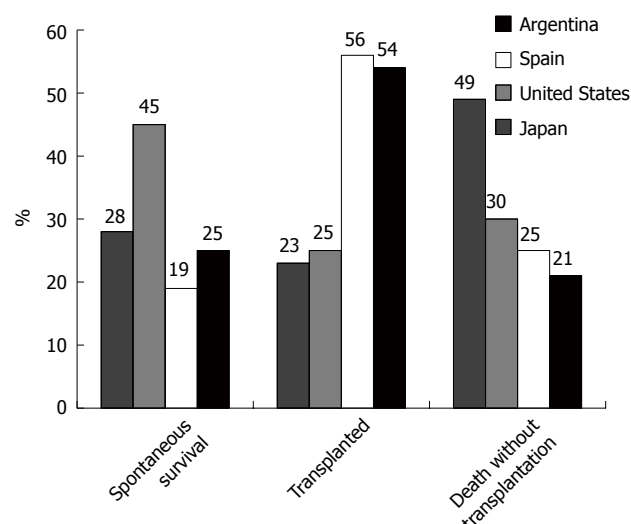


Figure 1 Outcomes of patients with acute liver failure in different countries. Mendizabal M, *Liver Transplant* 2014; Escorsell A, *Liver Transplant* 2007; Lee W, *Hepatology* 2008; Oketani M, *Hepatol Res* 2013.

by ALF, as well as marked activation of systemic inflammatory response, can extend into the post-transplant period. In UNOS and ELTR reviews of databases, infection was the most common cause of mortality following LT for ALF (24% and 18%, respectively). Remarkably, in the UNOS data, almost 22% of infectious complications were associated with fungal infections. Neurologic complications were reported as the second-most common cause of death following transplantation (13%). Fortunately, with better intensive care management of these critical patients, intracranial hypertension incidence has fallen dramatically, coinciding with survival improvement observed over time^[9,10]. Another important and alarming issue is death or graft failure related to psychosocial problems. According to the ELTR, patients transplanted for paracetamol overdose present ten times higher rates of death or graft failure, resulting from suicide or lack of compliance, than patients transplanted for other etiologies^[10]. The finding is even more alarming if we consider that in Europe, transplantation for paracetamol-induced ALF has increased sevenfold, from 2% (1973-1978) to 14.1% (2004-2008)^[10]. Patients with ALF due to paracetamol need very close post-transplant monitoring, including improved psychologic and social patient care.

Graft-related issues

In this challenging scenario in which patients with ALF quickly deteriorate and organ shortage remains one of the main problems, risk of mortality while on the waiting list should be weighed against risk of complications or failure resulting from use of an alternative graft. Different LT procedures can be selected depending on donor organ availability, including use of: deceased organ donor, living-donor liver transplantation (LDLT), auxiliary liver transplant,

and variable ABO status (Table 4).

LDLT: LDLT provides an alternative source of grafts to overcome the problem of organ shortage, accounting for up to 4% of LTs in the United States. However, this figure could account for more than 90% of LTs in some Asian countries^[47,52,53]. The indication in the pediatric ALF population is well established, and in experienced centers, patient and graft outcomes are similar to those of conventional cadaver donor transplants^[54,55]. ALF is the indication for transplantation in only 1% of patients evaluated for LDLT in the United States^[56]. This contrasts sharply with LDLT indication for ALF in Asia, where different groups report rates between 6% and 15%^[57,58]. Use of living-donor grafts in against-the-clock emergency settings is often complicated by insufficient time to assess potential donor's spontaneous willingness to donate or for transplant teams to evaluate important ethical and medical issues. Pressing donor evaluation raises special concerns regarding possible donor coercion. Potential consequences of expedited donor evaluation could increase donor postoperative complication rates and worsen psychosocial problems. Transplant centers with great expertise in LDLT report living-donor complication rates in ALF to be 34%, similar to those of other indications.

Graft size is a crucial variable in LDLT. Graft-to-recipient weight ratios < 0.8% are generally associated with poor outcome^[59]. The optimal graft-to-recipient weight ratio appears to be closer to 1.0%. However, some authors believe smaller grafts can still be used in ALF, given that this is an acute condition and most patients do not have portal hypertension^[60]. In countries where wait-list mortality rates are high or access to deceased donors is limited, LDLT allows better control over surgical procedure timing^[61]. Additionally, once donor evaluation is completed, LDLT can be performed at the first sign of patient decompensation using a good quality graft.

Auxiliary transplantation: Auxiliary liver transplantation is an attractive alternative to total transplantation. A partial left or right donor lobe is used, acting as temporary support to replace the damaged recipient liver, while all or part of the native liver remains *in situ*. The partial graft can be placed below the native liver (heterotopic) or replacing the resected right or left native lobe (auxiliary transplantation). Increased incidence of portal vein thrombosis or primary nonfunction has been observed with heterotopic transplantation compared to auxiliary partial or standard LT^[62]. Auxiliary transplantation provides temporary support of liver function until spontaneous regeneration and recovery of the native liver occurs, at which time immunosuppressive treatment is withdrawn and the implant atrophies or is removed. The surgical procedure is challenging because it requires partial native liver resection in a critically ill patient and

complex vascular reconstruction. Initial reports of auxiliary LT showed relatively high anastomotic complications and retransplantation rates, though recent outcomes have improved substantially^[63-65]. In Europe, auxiliary transplantation peaked at 4% between 1994 and 1998, but has since fallen to only 1.9% in 2004-2009^[10]. Optimal indications for auxiliary transplantation include patient age < 40 years, excellent temporary liver graft, and hemodynamic stability. However, it is difficult to predict which patients will present regeneration of the native liver. This appears to be the case in those with hyperacute presentation and viral or paracetamol etiology, as well as certain histology subtypes (diffuse pattern, map-like necrosis) and timing of hepatectomy^[65,66].

ABO-incompatible graft: Length of time on the waiting list also influences policies related to use of ABO incompatible grafts. Early results with ABO-incompatible LTs were disappointing because of increased risk of severe cellular and humoral graft rejection, biliary complications, and vascular thrombosis. Recent analysis of the ELTR showed the rate of graft loss at three months doubled in ABO-mismatched grafts used during emergency transplantation^[10]. Different strategies have been implemented to improve results with ABO-incompatible livers and other grafts. Toso *et al.*^[67] reported acceptable graft and patient survival in 14 patients using a quadruple immunosuppressive regimen without splenectomy; 64% and 56% of ABO-incompatible grafts remained functional after one and five years, respectively. Recent approaches have been described with promising results. Paul Brousse Hospital reported three patients treated with antigen-specific immunoadsorption and a quadruple immunosuppressive regimen combined or not with anti-CD20 humanized monoclonal antibodies (rituximab)^[68]. Keio University proposed a complex but successful protocol for ABO-incompatible LDLTs that included multiple perioperative plasmaphereses together with rituximab, splenectomy, and triple systemic immunosuppression. In addition, portal vein-infusion therapy was administered after transplant with methylprednisolone, prostaglandin E1, and gabexate mesylate^[69]. Thirteen adult patients underwent ABO-incompatible LDLTs under this protocol, for which authors reported a three-year survival of 76%, almost identical to that of ABO-compatible cases^[69]. Regardless of these promising results, close monitoring of the patient's immune status and adjustment of immunosuppression need to be implemented, as infection remains the major cause of morbidity and mortality. The protocols described should be viewed as important treatment options in select adult patients with ALF. However, they are very complex and require maximum expertise. Controversy remains as to whether ABO-compatible or -incompatible LT can really present similar post-transplant outcomes.

CONCLUSION

Despite progressive and constant improvement in ALF survival after LT, high mortality and graft loss rates persist, especially within the first three months post-transplant. Current prognostic models are helpful in identifying individuals who will need LT; nonetheless, fine-tuning of these scores is needed to improve identification in patients who would benefit from transplantation. Newer technologies are being developed and enhanced to improve survival. Different extracorporeal support devices have been advocated to supplant liver function in patients with ALF, either to improve native liver regeneration or to stabilize patients before transplantation. However, conclusive evidence has not been reported^[70,71]. Mesenchymal stem cell infusion also appears promising, but several problems remain in relation to use of this therapy, including conflicting data on the potential risk of malignant transformation, as well as degree of liver engraftment and their long-term efficacy^[72].

With increasing knowledge on encephalopathy pathogenesis, hepatic regeneration, and mechanisms of liver cell injury, outcomes should continue to improve. Early referral to a transplant center and prompt treatment of patients with worsening liver failure remain, however, the backbone behind outcome improvement.

ACKNOWLEDGMENTS

We are grateful to Podestá C for her review and assistance with editing this paper.

REFERENCES

- 1 Lee WM, Stravitz RT, Larson AM. Introduction to the revised American Association for the Study of Liver Diseases Position Paper on acute liver failure 2011. *Hepatology* 2012; **55**: 965-967 [PMID: 22213561 DOI: 10.1002/hep.25551]
- 2 Adam R, Karam V, Delvart V, O'Grady J, Mirza D, Klempnauer J, Castaing D, Neuhaus P, Jamieson N, Salizzoni M, Pollard S, Lerut J, Paul A, Garcia-Valdecasas JC, Rodríguez FS, Burroughs A. Evolution of indications and results of liver transplantation in Europe. A report from the European Liver Transplant Registry (ELTR). *J Hepatol* 2012; **57**: 675-688 [PMID: 22609307 DOI: 10.1016/j.jhep.2012.04.015]
- 3 2009 Annual Report of the US Organ Procurement Transplant Network and Scientific Registry of Transplant Recipient; Transplant data 1999-2008. Available from: URL: <http://optn.transplant.hrsa.gov/ar2009>
- 4 Jilani N, Das BC, Husain SA, Baweja UK, Chattopadhyaya D, Gupta RK, Sardana S, Kar P. Hepatitis E virus infection and fulminant hepatic failure during pregnancy. *J Gastroenterol Hepatol* 2007; **22**: 676-682 [PMID: 17444855 DOI: 10.1111/j.1440-1746.2007.04913.x]
- 5 Oketani M, Ido A, Tsubouchi H. Changing etiologies and outcomes of acute liver failure: A perspective from Japan. *J Gastroenterol Hepatol* 2011; **26** Suppl 1: 65-71 [PMID: 21199516 DOI: 10.1111/j.1440-1746.2010.06574.x]
- 6 Mendizabal M, Marciano S, Videla MG, Anders M, Zerega A, Balderramo DC, Chan D, Barrabino M, Gil O, Mastai R, Yantorno S, Gadano A, Silva MO. Changing etiologies and outcomes of acute liver failure: perspectives from 6 transplant centers in Argentina. *Liver Transpl* 2014; **20**: 483-489 [PMID: 24425668 DOI: 10.1002/lt.23823]
- 7 Lee WM. Etiologies of acute liver failure. *Semin Liver Dis* 2008; **28**: 142-152 [PMID: 18452114 DOI: 10.1055/s-2008-1073114]
- 8 Bernuau J, Rueff B, Benhamou JP. Fulminant and subfulminant liver failure: definitions and causes. *Semin Liver Dis* 1986; **6**: 97-106 [PMID: 3529410 DOI: 10.1055/s-2008-1040593]
- 9 Bernal W, Hyrylainen A, Gera A, Audimoolam VK, McPhail MJ, Auzinger G, Rela M, Heaton N, O'Grady JG, Wendon J, Williams R. Lessons from look-back in acute liver failure? A single centre experience of 3300 patients. *J Hepatol* 2013; **59**: 74-80 [PMID: 23439263 DOI: 10.1016/j.jhep.2013.02.010]
- 10 Germani G, Theodoridou E, Adam R, Karam V, Wendon J, O'Grady J, Burra P, Senzolo M, Mirza D, Castaing D, Klempnauer J, Pollard S, Paul A, Belghiti J, Tsochatzis E, Burroughs AK. Liver transplantation for acute liver failure in Europe: outcomes over 20 years from the ELTR database. *J Hepatol* 2012; **57**: 288-296 [PMID: 22521347 DOI: 10.1016/j.jhep.2012.03.017]
- 11 O'Grady JG, Alexander GJ, Hayllar KM, Williams R. Early indicators of prognosis in fulminant hepatic failure. *Gastroenterology* 1989; **97**: 439-445 [PMID: 2490426]
- 12 Bernuau J, Goudeau A, Poynard T, Dubois F, Lesage G, Yvonne B, Degott C, Bezeaud A, Rueff B, Benhamou JP. Multivariate analysis of prognostic factors in fulminant hepatitis B. *Hepatology* 1986; **6**: 648-651 [PMID: 3732998]
- 13 Yantorno SE, Kremers WK, Ruf AE, Trentadue JJ, Podestá LG, Villamil FG. MELD is superior to King's college and Clichy's criteria to assess prognosis in fulminant hepatic failure. *Liver Transpl* 2007; **13**: 822-828 [PMID: 17539002 DOI: 10.1002/lt.21104]
- 14 Hadem J, Stiefel P, Bahr MJ, Tillmann HL, Rifai K, Klempnauer J, Wedemeyer H, Manns MP, Schneider AS. Prognostic implications of lactate, bilirubin, and etiology in German patients with acute liver failure. *Clin Gastroenterol Hepatol* 2008; **6**: 339-345 [PMID: 18328438 DOI: 10.1016/j.cgh.2007.12.039]
- 15 Mochida S, Nakayama N, Matsui A, Nagoshi S, Fujiwara K. Re-evaluation of the Guideline published by the Acute Liver Failure Study Group of Japan in 1996 to determine the indications of liver transplantation in patients with fulminant hepatitis. *Hepatol Res* 2008; **38**: 970-979 [PMID: 18462374 DOI: 10.1111/j.1872-034X.2008.00368.x]
- 16 O'Grady J. Timing and benefit of liver transplantation in acute liver failure. *J Hepatol* 2014; **60**: 663-670 [PMID: 24211740 DOI: 10.1016/j.jhep.2013.10.024]
- 17 Bernal W, Wendon J. Acute liver failure. *N Engl J Med* 2013; **369**: 2525-2534 [PMID: 24369077 DOI: 10.1056/NEJMra1208937]
- 18 O'Grady JG. Prognostication in acute liver failure: a tool or an anchor? *Liver Transpl* 2007; **13**: 786-787 [PMID: 17538997 DOI: 10.1002/lt.21159]
- 19 Polson J. Assessment of prognosis in acute liver failure. *Semin Liver Dis* 2008; **28**: 218-225 [PMID: 18452121 DOI: 10.1055/s-2008-1073121]
- 20 Bailey B, Amre DK, Gaudreault P. Fulminant hepatic failure secondary to acetaminophen poisoning: a systematic review and meta-analysis of prognostic criteria determining the need for liver transplantation. *Crit Care Med* 2003; **31**: 299-305 [PMID: 12545033 DOI: 10.1097/01.CCM.0000034674.51554.4C]
- 21 Bernal W, Wendon J, Rela M, Heaton N, Williams R. Use and outcome of liver transplantation in acetaminophen-induced acute liver failure. *Hepatology* 1998; **27**: 1050-1055 [PMID: 9537445 DOI: 10.1002/hep.510270421]
- 22 McPhail MJ, Wendon JA, Bernal W. Meta-analysis of performance of King's's College Hospital Criteria in prediction of outcome in non-paracetamol-induced acute liver failure. *J Hepatol* 2010; **53**: 492-499 [PMID: 20580460 DOI: 10.1016/j.jhep.2010.03.023]
- 23 Craig DG, Ford AC, Hayes PC, Simpson KJ. Systematic review: prognostic tests of paracetamol-induced acute liver failure. *Aliment Pharmacol Ther* 2010; **31**: 1064-1076 [PMID: 20180786 DOI: 10.1111/j.1365-2036.2010.04279.x]

- 24 **Bernal W**, Donaldson N, Wyncoll D, Wendon J. Blood lactate as an early predictor of outcome in paracetamol-induced acute liver failure: a cohort study. *Lancet* 2002; **359**: 558-563 [PMID: 11867109 DOI: 10.1016/S0140-6736(02)07743-7]
- 25 **Choi WC**, Arnaout WC, Villamil FG, Demetriou AA, Vierling JM. Comparison of the applicability of two prognostic scoring systems in patients with fulminant hepatic failure. *Korean J Intern Med* 2007; **22**: 93-100 [PMID: 17616024]
- 26 **Pauwels A**, Mostefa-Kara N, Florent C, Lévy VG. Emergency liver transplantation for acute liver failure. Evaluation of London and Clichy criteria. *J Hepatol* 1993; **17**: 124-127 [PMID: 8445211]
- 27 **Craig DG**, Reid TW, Martin KG, Davidson JS, Hayes PC, Simpson KJ. The systemic inflammatory response syndrome and sequential organ failure assessment scores are effective triage markers following paracetamol (acetaminophen) overdose. *Aliment Pharmacol Ther* 2011; **34**: 219-228 [PMID: 21554357 DOI: 10.1111/j.1365-2036.2011.04687.x]
- 28 **Cholongitas E**, Theocharidou E, Vasianopoulou P, Betrosian A, Shaw S, Patch D, O'Beirne J, Agarwal B, Burroughs AK. Comparison of the sequential organ failure assessment score with the King's College Hospital criteria and the model for end-stage liver disease score for the prognosis of acetaminophen-induced acute liver failure. *Liver Transpl* 2012; **18**: 405-412 [PMID: 22213443 DOI: 10.1002/lt.23370]
- 29 **Craig DG**, Reid TW, Wright EC, Martin KG, Davidson JS, Hayes PC, Simpson KJ. The sequential organ failure assessment (SOFA) score is prognostically superior to the model for end-stage liver disease (MELD) and MELD variants following paracetamol (acetaminophen) overdose. *Aliment Pharmacol Ther* 2012; **35**: 705-713 [PMID: 22260637 DOI: 10.1111/j.1365-2036.2012.04996.x]
- 30 **Mitchell I**, Bihari D, Chang R, Wendon J, Williams R. Earlier identification of patients at risk from acetaminophen-induced acute liver failure. *Crit Care Med* 1998; **26**: 279-284 [PMID: 9468165]
- 31 **Schmidt LE**, Larsen FS. MELD score as a predictor of liver failure and death in patients with acetaminophen-induced liver injury. *Hepatology* 2007; **45**: 789-796 [PMID: 17326205 DOI: 10.1002/hep.21503] [Available]
- 32 **Dhiman RK**, Jain S, Maheshwari U, Bhalla A, Sharma N, Ahluwalia J, Duseja A, Chawla Y. Early indicators of prognosis in fulminant hepatic failure: an assessment of the Model for End-Stage Liver Disease (MELD) and King's College Hospital criteria. *Liver Transpl* 2007; **13**: 814-821 [PMID: 17370333 DOI: 10.1002/lt.21050]
- 33 **Bechmann LP**, Jochum C, Kocabayoglu P, Sowa JP, Kassalik M, Gieseler RK, Saner F, Paul A, Trautwein C, Gerken G, Canbay A. Cytokeratin 18-based modification of the MELD score improves prediction of spontaneous survival after acute liver injury. *J Hepatol* 2010; **53**: 639-647 [PMID: 20630612 DOI: 10.1016/j.jhep.2010.04.029]
- 34 **Rutherford A**, King LY, Hynan LS, Vedvyas C, Lin W, Lee WM, Chung RT. Development of an accurate index for predicting outcomes of patients with acute liver failure. *Gastroenterology* 2012; **143**: 1237-1243 [PMID: 22885329 DOI: 10.1053/j.gastro.2012.07.113]
- 35 **Schiødt FV**, Bangert K, Shakil AO, McCashland T, Murray N, Hay JE, Lee WM. Predictive value of actin-free Gc-globulin in acute liver failure. *Liver Transpl* 2007; **13**: 1324-1329 [PMID: 17763387 DOI: 10.1002/lt.21236]
- 36 **Schmidt LE**, Dalhoff K. Alpha-fetoprotein is a predictor of outcome in acetaminophen-induced liver injury. *Hepatology* 2005; **41**: 26-31 [PMID: 15690478 DOI: 10.1002/hep.20511]
- 37 **Schmidt LE**, Dalhoff K. Serum phosphate is an early predictor of outcome in severe acetaminophen-induced hepatotoxicity. *Hepatology* 2002; **36**: 659-665 [PMID: 12198658 DOI: 10.1053/jhep.2002.35069]
- 38 **Volkman X**, Anstaett M, Hadem J, Stiefel P, Bahr MJ, Lehner F, Manns MP, Schulze-Osthoff K, Bantel H. Caspase activation is associated with spontaneous recovery from acute liver failure. *Hepatology* 2008; **47**: 1624-1633 [PMID: 18393389 DOI: 10.1002/hep.22237]
- 39 **Bechmann LP**, Marquitan G, Jochum C, Saner F, Gerken G, Canbay A. Apoptosis versus necrosis rate as a predictor in acute liver failure following acetaminophen intoxication compared with acute-on-chronic liver failure. *Liver Int* 2008; **28**: 713-716 [PMID: 18433398 DOI: 10.1111/j.1478-3231.2007.01566.x]
- 40 **Antoniades CG**, Berry PA, Davies ET, Hussain M, Bernal W, Vergani D, Wendon J. Reduced monocyte HLA-DR expression: a novel biomarker of disease severity and outcome in acetaminophen-induced acute liver failure. *Hepatology* 2006; **44**: 34-43 [PMID: 16799971 DOI: 10.1002/hep.21240]
- 41 **Schiødt FV**, Rossaro L, Stravitz RT, Shakil AO, Chung RT, Lee WM. Gc-globulin and prognosis in acute liver failure. *Liver Transpl* 2005; **11**: 1223-1227 [PMID: 16184570 DOI: 10.1002/lt.20437]
- 42 **Westbrook RH**, Yeoman AD, Joshi D, Heaton ND, Quaglia A, O'Grady JG, Auzinger G, Bernal W, Heneghan MA, Wendon JA. Outcomes of severe pregnancy-related liver disease: refining the role of transplantation. *Am J Transplant* 2010; **10**: 2520-2526 [PMID: 20977643 DOI: 10.1111/j.1600-6143.2010.03301.x]
- 43 **Escudé L**, Francoz C, Vinel JP, Moucari R, Cournot M, Paradis V, Sauvanet A, Belghiti J, Valla D, Bernuau J, Durand F. Amanita phalloides poisoning: reassessment of prognostic factors and indications for emergency liver transplantation. *J Hepatol* 2007; **46**: 466-473 [PMID: 17188393 DOI: 10.1016/j.jhep.2006.10.013]
- 44 **Ganzert M**, Felgenhauer N, Zilker T. Indication of liver transplantation following amatoxin intoxication. *J Hepatol* 2005; **42**: 202-209 [PMID: 15664245 DOI: 10.1016/j.jhep.2004.10.023]
- 45 **Taylor RM**, Davern T, Munoz S, Han SH, McGuire B, Larson AM, Hynan L, Lee WM, Fontana RJ. Fulminant hepatitis A virus infection in the United States: Incidence, prognosis, and outcomes. *Hepatology* 2006; **44**: 1589-1597 [PMID: 17133489 DOI: 10.1002/hep.21439]
- 46 **Larson AM**, Polson J, Fontana RJ, Davern TJ, Lalani E, Hynan LS, Reisch JS, Schiødt FV, Ostapowicz G, Shakil AO, Lee WM. Acetaminophen-induced acute liver failure: results of a United States multicenter, prospective study. *Hepatology* 2005; **42**: 1364-1372 [PMID: 16317692 DOI: 10.1002/hep.20948]
- 47 **Freeman RB**, Steffick DE, Guidinger MK, Farmer DG, Berg CL, Merion RM. Liver and intestine transplantation in the United States, 1997-2006. *Am J Transplant* 2008; **8**: 958-976 [PMID: 18336699 DOI: 10.1111/j.1600-6143.2008.02174.x]
- 48 **Tessier G**, Villeneuve E, Villeneuve JP. Etiology and outcome of acute liver failure: experience from a liver transplantation centre in Montreal. *Can J Gastroenterol* 2002; **16**: 672-676 [PMID: 12420024]
- 49 **Farmer DG**, Anselmo DM, Ghobrial RM, Yersiz H, McDiarmid SV, Cao C, Weaver M, Figueroa J, Khan K, Vargas J, Saab S, Han S, Durazo F, Goldstein L, Holt C, Busuttil RW. Liver transplantation for fulminant hepatic failure: experience with more than 200 patients over a 17-year period. *Ann Surg* 2003; **237**: 666-675; discussion 675-676 [PMID: 12724633 DOI: 10.1097/01.SLA.0000064365.54197.9E]
- 50 **Barshes NR**, Lee TC, Balkrishnan R, Karpen SJ, Carter BA, Goss JA. Risk stratification of adult patients undergoing orthotopic liver transplantation for fulminant hepatic failure. *Transplantation* 2006; **81**: 195-201 [PMID: 16436962 DOI: 10.1097/01.tp.0000188149.90975.63]
- 51 **Bernal W**, Cross TJ, Auzinger G, Sizer E, Heneghan MA, Bowles M, Muiesan P, Rela M, Heaton N, Wendon J, O'Grady JG. Outcome after wait-listing for emergency liver transplantation in acute liver failure: a single centre experience. *J Hepatol* 2009; **50**: 306-313 [PMID: 19070386 DOI: 10.1016/j.jhep.2008.09.012]
- 52 **Yamashiki N**, Sugawara Y, Tamura S, Nakayama N, Oketani M, Umeshita K, Uemoto S, Mochida S, Tsubouchi H, Kokudo N. Outcomes after living donor liver transplantation for acute liver failure in Japan: results of a nationwide survey. *Liver Transpl* 2012; **18**: 1069-1077 [PMID: 22577093 DOI: 10.1002/lt.23469]
- 53 **de Villa VH**, Lo CM, Chen CL. Ethics and rationale of living-donor liver transplantation in Asia. *Transplantation* 2003; **75**: S2-S5 [PMID: 12589129 DOI: 10.1097/01.TP.0000046532.44975.57]

- 54 **Oh SH**, Kim KM, Kim DY, Kim Y, Song SM, Lee YJ, Park SJ, Yoon CH, Ko GY, Sung KB, Hwang GS, Choi KT, Yu E, Song GW, Ha TY, Moon DB, Ahn CS, Kim KH, Hwang S, Park KM, Lee YJ, Lee SG. Improved outcomes in liver transplantation in children with acute liver failure. *J Pediatr Gastroenterol Nutr* 2014; **58**: 68-73 [PMID: 23942007 DOI: 10.1097/MPG.0b013e3182a80362]
- 55 **Farmer DG**, Venick RS, McDiarmid SV, Duffy JP, Kattan O, Hong JC, Vargas J, Yersiz H, Busuttil RW. Fulminant hepatic failure in children: superior and durable outcomes with liver transplantation over 25 years at a single center. *Ann Surg* 2009; **250**: 484-493 [PMID: 19730179 DOI: 10.1097/SLA.0b013e3181b480ad]
- 56 **Campsen J**, Blei AT, Emond JC, Everhart JE, Freise CE, Lok AS, Saab S, Wisniewski KA, Trotter JF. Outcomes of living donor liver transplantation for acute liver failure: the adult-to-adult living donor liver transplantation cohort study. *Liver Transpl* 2008; **14**: 1273-1280 [PMID: 18756453 DOI: 10.1002/lt.21500]
- 57 **Lo CM**, Fan ST, Liu CL, Yong BH, Wong Y, Lau GK, Lai CL, Ng IO, Wong J. Lessons learned from one hundred right lobe living donor liver transplants. *Ann Surg* 2004; **240**: 151-158 [PMID: 15213631 DOI: 10.1097/01.sla.0000129340.05238.a0] [Available]
- 58 **Morioka D**, Egawa H, Kasahara M, Ito T, Haga H, Takada Y, Shimada H, Tanaka K. Outcomes of adult-to-adult living donor liver transplantation: a single institution's experience with 335 consecutive cases. *Ann Surg* 2007; **245**: 315-325 [PMID: 17245187]
- 59 **Uemoto S**, Inomata Y, Sakurai T, Egawa H, Fujita S, Kiuchi T, Hayashi M, Yasutomi M, Yamabe H, Tanaka K. Living donor liver transplantation for fulminant hepatic failure. *Transplantation* 2000; **70**: 152-157 [PMID: 10919593]
- 60 **Ikegami T**, Taketomi A, Soejima Y, Maehara Y. Feasibility of adult-to-adult living donor liver transplantation for acute liver failure. *Liver Transpl* 2009; **15**: 117-118 [PMID: 19109841 DOI: 10.1002/lt.21684]
- 61 **Lo CM**. Living donor liver transplantation for acute liver failure: no other choice. *Liver Transpl* 2012; **18**: 1005-1006 [PMID: 22715165 DOI: 10.1002/lt.23492]
- 62 **van Hoek B**, de Boer J, Boudjema K, Williams R, Corsmit O, Terpstra OT. Auxiliary versus orthotopic liver transplantation for acute liver failure. EURALT Study Group. European Auxiliary Liver Transplant Registry. *J Hepatol* 1999; **30**: 699-705 [PMID: 10207813]
- 63 **Bismuth H**, Azoulay D, Samuel D, Reynes M, Grimon G, Majno P, Castaing D. Auxiliary partial orthotopic liver transplantation for fulminant hepatitis. The Paul Brousse experience. *Ann Surg* 1996; **224**: 712-724; discussion 724-726 [PMID: 8968226]
- 64 **Dokmak S**, Aussilhou B, Durand F, Paradis V, Belghiti J. Complete spontaneous liver graft disappearance after auxiliary liver transplantation. *Hepatology* 2014; **60**: 1104-1106 [PMID: 24753069 DOI: 10.1002/hep.27059]
- 65 **Durand F**, Belghiti J, Handra-Luca A, Francoz C, Sauvanet A, Marcellin P, Farges O, Bernuau J, Valla D. Auxiliary liver transplantation for fulminant hepatitis B: results from a series of six patients with special emphasis on regeneration and recurrence of hepatitis B. *Liver Transpl* 2002; **8**: 701-707 [PMID: 12149763 DOI: 10.1053/jlts.2002.33745]
- 66 **Quaglia A**, Portmann BC, Knisely AS, Srinivasan P, Muiesan P, Wendon J, Heneghan MA, O'Grady JG, Samyn M, Hadzic D, Dhawan A, Mieli-Vergani G, Heaton N, Rela M. Auxiliary transplantation for acute liver failure: Histopathological study of native liver regeneration. *Liver Transpl* 2008; **14**: 1437-1448 [PMID: 18825705 DOI: 10.1002/lt.21568]
- 67 **Toso C**, Al-Qahtani M, Alsaif FA, Bigam DL, Meeberg GA, James Shapiro AM, Bain VG, Kneteman NM. ABO-incompatible liver transplantation for critically ill adult patients. *Transpl Int* 2007; **20**: 675-681 [PMID: 17521384 DOI: 10.1111/j.1432-2277.2007.00492.x]
- 68 **Saliba F**, Ichai P, Azoulay D, Habbouchi H, Antonini T, Sebah M, Adam R, Castaing D, Samuel D. Successful long-term outcome of ABO-incompatible liver transplantation using antigen-specific immunoadsorption columns. *Ther Apher Dial* 2010; **14**: 116-123 [PMID: 20438529 DOI: 10.1111/j.1744-9987.2009.00792.x]
- 69 **Tanabe M**, Kawachi S, Obara H, Shinoda M, Hibi T, Kitagawa Y, Wakabayashi G, Shimazu M, Kitajima M. Current progress in ABO-incompatible liver transplantation. *Eur J Clin Invest* 2010; **40**: 943-949 [PMID: 20636381 DOI: 10.1111/j.1365-2362.2010.02339.x]
- 70 **Saliba F**, Camus C, Durand F, Mathurin P, Letierce A, Delafosse B, Barange K, Perrigault PF, Belnard M, Ichai P, Samuel D. Albumin dialysis with a noncell artificial liver support device in patients with acute liver failure: a randomized, controlled trial. *Ann Intern Med* 2013; **159**: 522-531 [PMID: 24126646 DOI: 10.7326/0003-4819-159-8-201310150-00005]
- 71 **Grodzicki M**, Kotulski M, Leonowicz D, Zieniewicz K, Krawczyk M. Results of treatment of acute liver failure patients with use of the prometheus FPSA system. *Transplant Proc* 2009; **41**: 3079-3081 [PMID: 19857681 DOI: 10.1016/j.transproceed.2009.08.024]
- 72 **Volarevic V**, Nurkovic J, Arsenijevic N, Stojkovic M. Concise review: Therapeutic potential of mesenchymal stem cells for the treatment of acute liver failure and cirrhosis. *Stem Cells* 2014; **32**: 2818-2823 [PMID: 25154380 DOI: 10.1002/stem.1818]

P- Reviewer: Bramhall S, Cholongitas EC, Dehghani SM
S- Editor: Qi Y **L- Editor:** Filipodia **E- Editor:** Zhang DN





Published by **Baishideng Publishing Group Inc**

8226 Regency Drive, Pleasanton, CA 94588, USA

Telephone: +1-925-223-8242

Fax: +1-925-223-8243

E-mail: bpgoffice@wjgnet.com

Help Desk: <http://www.wjgnet.com/esps/helpdesk.aspx>

<http://www.wjgnet.com>



ISSN 1007-9327

