

Table S1 Chemotherapy regimens used after curative gastrectomy

Chemotherapy regimen	<i>N</i>	P-leukopenia	Non p-leukopenia
		(%)	(%)
Total	614	107 (17.4)	507 (82.6)
Oxaliplatin/paclitaxel/5-Fu	214	36 (16.8)	178 (83.2)
Oxaliplatin/capecitabine	95	17 (17.9)	78 (82.1)
Paclitaxel/capecitabine	60	10 (16.7)	50 (83.3)
Oxaliplatin/S-1	43	6 (14.0)	37 (86.0)
Paclitaxel/5-Fu	40	7 (17.5)	33 (82.5)
5-FU/oxaliplatin/leukovorin	39	7 (17.9)	32 (82.1)
Paclitaxel/S-1	30	5 (16.7)	25 (83.3)
5-FU/cisplatin	22	4 (18.2)	18 (81.8)
Papecitabine	21	3 (14.3)	18 (85.7)
Oxaliplatin/paclitaxel	5	2 (40.0)	3 (60.0)
S-1	13	1 (7.7)	12 (92.3)
Others	11	2 (18.2)	9 (81.8)
No chemotherapy	21	7 (33.3)	14 (66.7)

Table S2 Neutrophil and lymphocyte counts and their proportions, before and after surgery grouped by *p-leukopenia* and *Post-leukopenia*.

Factors	Before operation		After operation		<i>P</i> value
	Mean ±SD	Range	Mean ±SD	Range	
In all patients					
Neutrophil count	3.90 ± 1.94	1.05-16.70	3.06 ± 1.57	0.68-16.03	<0.001
Lymphocyte count	1.67 ± 0.61	0.02-4.57	1.58 ± 0.54	0.49-4.25	<0.001
NLR	2.83 ± 3.92	0.56-83.5	2.18 ± 1.64	0.42-19.55	<0.001
In <i>p-leukopenia</i> patients					
Neutrophil count	3.73 ± 1.83	1.50-13.10	2.02 ± 0.94	0.83-7.40	<0.001
Lymphocyte count	1.52 ± 0.50	0.30-3.07	1.33 ± 0.38	0.49-2.60	<0.001
NLR	2.91 ± 2.41	0.90-15.67	1.65 ± 0.97	0.45-6.73	<0.001
In <i>non-p-leukopenia</i> patients					
Neutrophil count	3.94 ± 1.96	1.05-16.7	3.28 ± 1.59	0.68-16.03	<0.001
		0			
Lymphocyte count	1.71 ± 0.63	0.20-4.57	1.64 ± 0.55	0.50-4.25	0.006
NLR	2.81 ± 4.17	0.56-83.5	2.29 ± 1.73	0.42-19.55	0.008
In patients with <i>post-leukopenia</i>					
Neutrophil count	3.70 ± 1.82	1.50-13.10	2.02 ± 0.93	0.83-7.40	<0.001

Lymphocyte count	1.43 ±0.49	0.30-3.07	1.30 ±0.36	0.49-2.60	0.003
NLR	2.89 ±2.39	0.90-15.67	1.67 ±1.02	0.45-6.73	<0.001
In patients without <i>post-leukopenia</i>					
Neutrophil count	3.95 ±1.94	1.05-16.70	3.29 ±1.59	0.68-16.03	<0.001
Lymphocyte count	1.75 ±0.63	0.20-4.57	1.67 ±0.55	0.50-4.25	0.003
NLR	2.81 ±4.18	0.56-83.5	2.29 ±1.73	0.42-19.55	0.007

Notes: SD, standard deviation; NLR, neutrophil to lymphocyte ratio. *p-leukopenia*, a preoperative WBC $\geq 4.0 \times 10^9/\text{L}$ and postoperative WBC $< 4.0 \times 10^9/\text{L}$, and an absolute decrease postoperatively of $\geq 0.5 \times 10^9/\text{L}$; *Post-leukopenia*, a postoperative WBC $< 4.0 \times 10^9/\text{L}$.

Table S3 Hemoglobin (HGB) levels and platelet (PLT) counts in *post-leukopenia* and *non-pos-leukopenia* patients. *Post-leukopenia* was here defined as white blood cells $<4.0 \times 10^9 /L$.

Variables	Post-Leukopenia			Non-post-leukopenia		
	Mean \pm SD	Range	P value	Mean \pm SD	Range	P value
HGB g/L						
Before	119.74 \pm	55-176	0.002	125.50 \pm	55-170	<0.001
operation	24.16			22.39		
After operation	114.21 \pm	79-161		117.98 \pm 13.97	79-154	
	12.26					
PLT $\times 10^9/L$						
Before	192.66 \pm	61-404	0.011	221.45 \pm	55-706	0.370
operation	67.26			78.70		
After operation	178.16 \pm	53-535		224.87 \pm	42-793	
	69.18			86.06		

Method S1. The indications for chemotherapy

According to the China edition of the NCCN Clinical Practice Guidelines in Oncology, the criteria of eligible patients were: histologically verified gastric cancer of stage II, III or stage I(T2N0) with risk factors including poor differentiation, lymphatic vessel or neural invasion, and age less than 50 years or stage IV with resectable locally liver metastasis. D2 lymph-node dissection with R0 or R1 gastrectomy; an age of 20 to 85 years; adequate organ function (a leukocyte count of $> 4 \times 10^9/L$ or the lower limit of the normal range; a platelet count of $> 100 \times 10^9/L$; a total bilirubin level of < 1.5 mg/dl, aspartate aminotransferase and alanine aminotransferase levels no more than 2 times the upper limit of the normal range; and a serum creatinine level no greater than the upper limit of the normal range).

Suplemenarty data

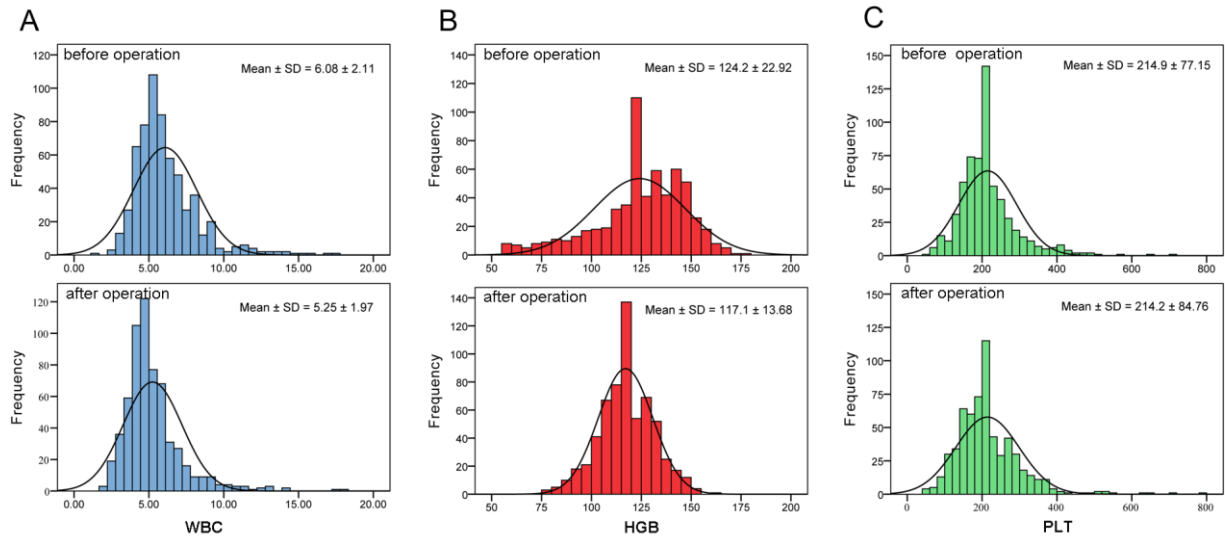


Figure S1. The distribution of WBC(A), HGB(B) and PLT(C) in patients both with and without p-leukopenia decreased after surgery.

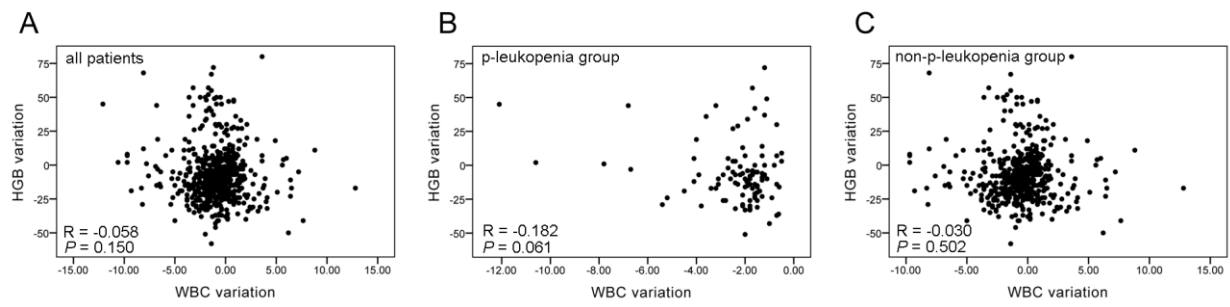


Figure S2. The correlation between the variation of WBC and HGB in all patients(A) or the subpopulation with(B) or without(C) p-leukopenia decreased after surgery.