

## Answering reviewers

February 26, 2016

Dear editors,

Please find enclosed the edited manuscript in Word format(file name:NO.24259-review.doc)

Title: Thymoquinone inhibits proliferation in Gastric Cancer via STAT3 pathway in Vivo and in Vitro

Authors: wenqian zhu and jun wang

Name of journal: World Journal of Gastroenterology

Manuscript NO.: 24259

The manuscript has been improved according to the suggestions of reviewers.

1.I' ve modified my language faults already. At the same time,.

2.I will answer your questions as follows:

Comment1: Figure 1B. No densitometry of the bands available? It would be adequate to have them.

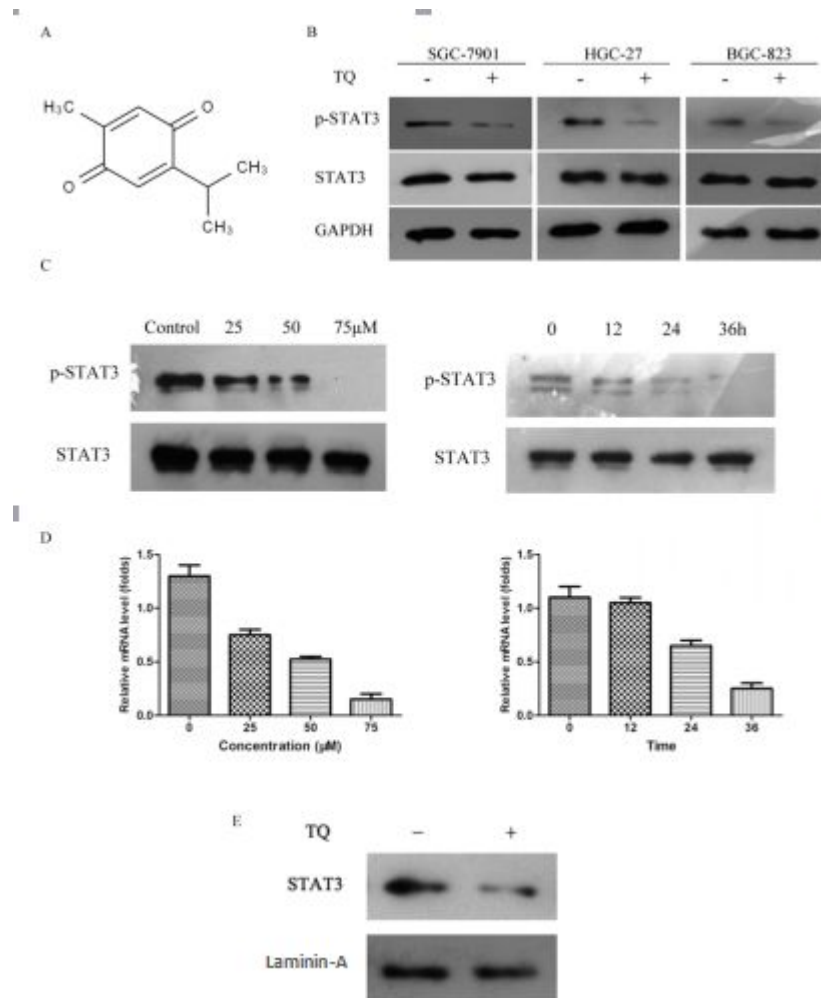
Response: I agree to that the bands are a little faint, I will provide you a histogram of gray scale soon.

Comment2: Figure 1C. Why are the p-STAT3 bands different in the concentration or time-dependent assays (singlet band vs double band?

Response: Though it seems to be a double band, it actually is a singlet band.

Comment3: Figure 1E should read Laminin-A, not Lamin-A

Response: As you asked, which is my mistake, sorry for that.

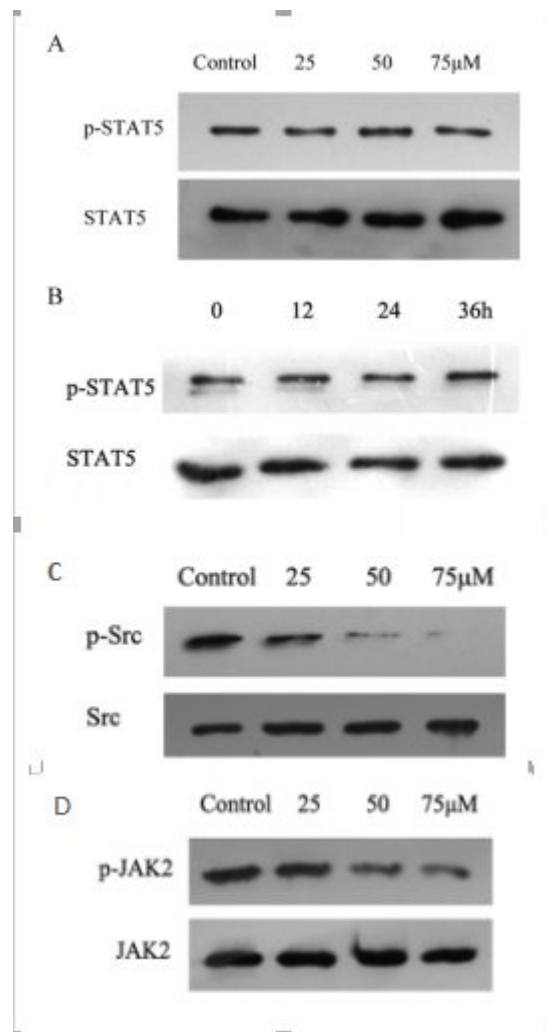


Comment4: How do you match RT-PCR results with blot results? It is mentioned in the text that TQ had not effect on the STAT3 levels, but it is mentioned later that RT-PCR demonstrated STAT3 gene inhibition. Hence, one would expect lower STAT3 levels if the gene is inhibited. Furthermore, the RT-PCR results seem to parallel p-STAT3 levels. I would appreciate this issue being clarified.

Response: My answer is TQ has no affect to the STAT3 total protein expression, however inhibited p-STAT3, which related ti STAT3 gene.

Comment5: In figure 2, the order of the images does not match the figure legends. Panel C seems to correspond to what is mentioned as D in the legend. Panel D seems to correlate with what is mentioned as 3(?) in the legend.

Response: C and D should be reversed. I 've changed that.



Comment6: In figure 4, can some statistics be shown? Is the difference observed (in either panel A or B ) when compared to concentration or time 0, statistically different? Surely it is, but it should be wise to show it.

Response: In Figure 4, ( $p < 0.05$ ) should be added to the figure, sorry for that.

My manuscript will be sent to you as well.

Thank you for your kind.

Sincerely yours,

Wenqian Zhu.

Department of Gastroenterology, Renmin Hospital of Wuhan University, Key Laboratory of Hubei Province for digestive System Disease, Wuhan 430060 Hubei, China. 396822281@qq.com

