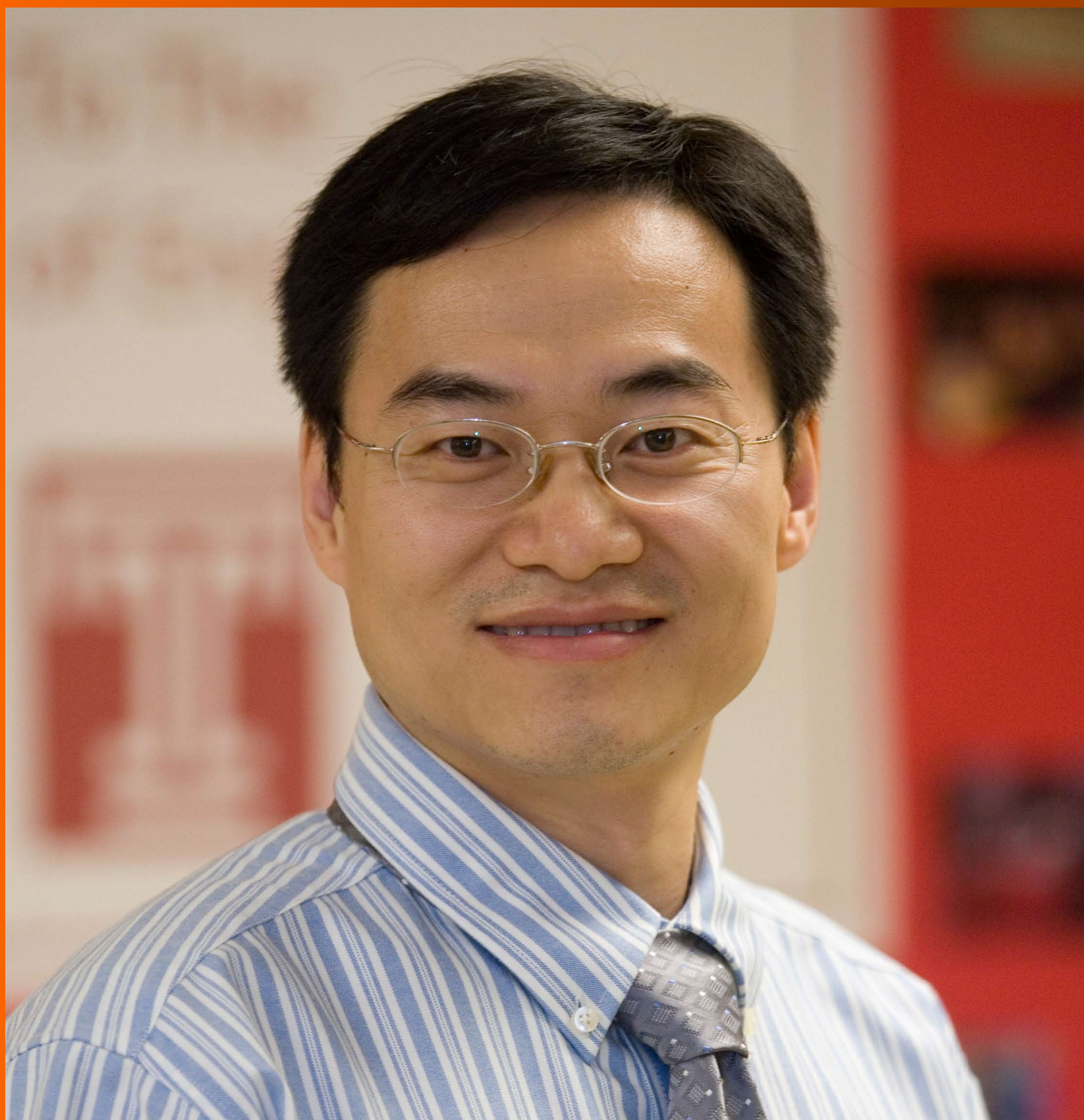


World Journal of *Clinical Oncology*

World J Clin Oncol 2017 June 10; 8(3): 178-304





REVIEW

- 178 Histone deacetylases, microRNA and leptin crosstalk in pancreatic cancer
Tchio Mantho CI, Harbuzariu A, Gonzalez-Perez RR
- 190 Multidisciplinary approach of colorectal cancer liver metastases
Fiorentini G, Sarti D, Aliberti C, Carandina R, Mambrini A, Guadagni S
- 203 Evolving role of Sorafenib in the management of hepatocellular carcinoma
Ziogas IA, Tsoulfas G
- 214 Magnetic resonance imaging for diagnosis and neoadjuvant treatment evaluation in locally advanced rectal cancer: A pictorial review
Engin G, Sharifov R

MINIREVIEWS

- 230 Immunotherapy in pancreatic cancer: Unleash its potential through novel combinations
Guo S, Contratto M, Miller G, Leichman L, Wu J
- 241 Current state and controversies in fertility preservation in women with breast cancer
Taylan E, Oktay KH
- 249 Biological mesh reconstruction of the pelvic floor following abdominoperineal excision for cancer: A review
Schiltz B, Buchs NC, Penna M, Scarpa CR, Liot E, Morel P, Ris F
- 255 Potential prognostic biomarkers in pancreatic juice of resectable pancreatic ductal adenocarcinoma
Agrawal S

ORIGINAL ARTICLE

Case Control Study

- 261 Levels of neutrophil gelatinase-associated lipocalin in patients with head and neck squamous cell carcinoma in Indian population from Haryana state
Verma M, Dahiya K, Soni A, Dhankhar R, Ghalaat VS, Bansal A, Kaushal V

SYSTEMATIC REVIEWS

- 266 Recurrence-free survival as a putative surrogate for overall survival in phase III trials of curative-intent treatment of colorectal liver metastases: Systematic review
Araujo RLC, Herman P, Riechelmann RP

META-ANALYSIS

- 273** Robot-assisted laparoscopic *vs* open gastrectomy for gastric cancer: Systematic review and meta-analysis
Caruso S, Patriti A, Roviello F, De Franco L, Franceschini F, Ceccarelli G, Coratti A

CASE REPORT

- 285** Bilateral diffuse grade 5 radiation pneumonitis after intensity modulated radiation therapy for localized lung cancer
Osborn VW, Leaf A, Lee A, Garay E, Safdieh J, Schwartz D, Schreiber D
- 289** Prostatic adenocarcinoma, oncocytic variant: Case report and literature review
Klaimont MM, Zafar N
- 293** Pancreatic neuroendocrine tumor Grade 1 patients followed up without surgery: Case series
Sugimoto M, Takagi T, Suzuki R, Konno N, Asama H, Watanabe K, Nakamura J, Kikuchi H, Waragai Y, Takasumi M, Kawana S, Hashimoto Y, Hikichi T, Ohira H
- 300** Target migration from re-inflation of adjacent atelectasis during lung stereotactic body radiotherapy
Mao B, Verma V, Zheng D, Zhu X, Bennion NR, Bhurud AR, Poole MA, Zhen W

Contents

World Journal of Clinical Oncology
Volume 8 Number 3 June 10, 2017

ABOUT COVER

Editorial Board Member of *World Journal of Clinical Oncology*, Bin Wang, PhD, Assistant Professor, Department of Biomedical Engineering, Widener University, Chester, PA 19013, United States

AIM AND SCOPE

World Journal of Clinical Oncology (*World J Clin Oncol*, *WJCO*, online ISSN 2218-4333, DOI: 10.5306) is a peer-reviewed open access academic journal that aims to guide clinical practice and improve diagnostic and therapeutic skills of clinicians.

WJCO covers a variety of clinical medical topics, including etiology, epidemiology, evidence-based medicine, informatics, diagnostic imaging, endoscopy, tumor recurrence and metastasis, tumor stem cells, radiotherapy, chemotherapy, interventional radiology, palliative therapy, clinical chemotherapy, biological therapy, minimally invasive therapy, physiotherapy, psycho-oncology, comprehensive therapy, and oncology-related nursing. Priority publication will be given to articles concerning diagnosis and treatment of oncology diseases. The following aspects are covered: Clinical diagnosis, laboratory diagnosis, differential diagnosis, imaging tests, pathological diagnosis, molecular biological diagnosis, immunological diagnosis, genetic diagnosis, functional diagnostics, and physical diagnosis; and comprehensive therapy, drug therapy, surgical therapy, interventional treatment, minimally invasive therapy, and robot-assisted therapy.

We encourage authors to submit their manuscripts to *WJCO*. We will give priority to manuscripts that are supported by major national and international foundations and those that are of great clinical significance.

INDEXING/ABSTRACTING

World Journal of Clinical Oncology is now indexed in PubMed, PubMed Central and Scopus.

FLYLEAF

I-III Editorial Board

EDITORS FOR THIS ISSUE

Responsible Assistant Editor: *Xiang Li*
Responsible Electronic Editor: *Ya-Jing Lu*
Proofing Editor-in-Chief: *Lian-Sheng Ma*

Responsible Science Editor: *Fang-Fang Ji*
Proofing Editorial Office Director: *Ze-Mao Gong*

NAME OF JOURNAL
World Journal of Clinical Oncology

ISSN
ISSN 2218-4333 (online)

LAUNCH DATE
November 10, 2010

FREQUENCY
Bimonthly

EDITOR-IN-CHIEF
Godefridus J Peters, PhD, Professor, Department of Medical Oncology, Cancer Center Amsterdam, VU University Medical Center, Amsterdam 1081 HV, Netherlands

EDITORIAL BOARD MEMBERS
All editorial board members resources online at <http://www.wjgnet.com/2218-4333/editorialboard.htm>

EDITORIAL OFFICE
Xiu-Xia Song, Director

World Journal of Clinical Oncology
Baishideng Publishing Group Inc
7901 Stoneridge Drive, Suite 501, Pleasanton, CA 94588, USA
Telephone: +1-925-2238242
Fax: +1-925-2238243
E-mail: editorialoffice@wjgnet.com
Help Desk: <http://www.f6publishing.com/helpdesk>
<http://www.wjgnet.com>

PUBLISHER
Baishideng Publishing Group Inc
7901 Stoneridge Drive,
Suite 501, Pleasanton, CA 94588, USA
Telephone: +1-925-2238242
Fax: +1-925-2238243
E-mail: bpgoffice@wjgnet.com
Help Desk: <http://www.f6publishing.com/helpdesk>
<http://www.wjgnet.com>

PUBLICATION DATE
June 10, 2017

COPYRIGHT

© 2017 Baishideng Publishing Group Inc. Articles published by this Open-Access journal are distributed under the terms of the Creative Commons Attribution Non-commercial License, which permits use, distribution, and reproduction in any medium, provided the original work is properly cited, the use is non commercial and is otherwise in compliance with the license.

SPECIAL STATEMENT

All articles published in journals owned by the Baishideng Publishing Group (BPG) represent the views and opinions of their authors, and not the views, opinions or policies of the BPG, except where otherwise explicitly indicated.

INSTRUCTIONS TO AUTHORS

<http://www.wjgnet.com/bpg/gerinfo/204>

ONLINE SUBMISSION

<http://www.f6publishing.com>

Pancreatic neuroendocrine tumor Grade 1 patients followed up without surgery: Case series

Mitsuru Sugimoto, Tadayuki Takagi, Rei Suzuki, Naoki Konno, Hiroyuki Asama, Ko Watanabe, Jun Nakamura, Hitomi Kikuchi, Yuichi Waragai, Mika Takasumi, Satoshi Kawana, Yuko Hashimoto, Takuto Hikichi, Hiromasa Ohira

Mitsuru Sugimoto, Tadayuki Takagi, Rei Suzuki, Naoki Konno, Hiroyuki Asama, Ko Watanabe, Jun Nakamura, Hitomi Kikuchi, Yuichi Waragai, Mika Takasumi, Hiromasa Ohira, Department of Gastroenterology, Fukushima Medical University, School of Medicine, Fukushima City, Fukushima Prefecture 960-1295, Japan

Naoki Konno, Ko Watanabe, Jun Nakamura, Hitomi Kikuchi, Takuto Hikichi, Department of Endoscopy, Fukushima Medical University Hospital, Fukushima City, Fukushima Prefecture 960-1295, Japan

Satoshi Kawana, Yuko Hashimoto, Department of Diagnostic Pathology, Fukushima Medical University, School of Medicine, Fukushima City, Fukushima Prefecture 960-1295, Japan

Author contributions: Sugimoto M designed and performed the research and wrote the paper; Takagi T and Suzuki R designed the research and supervised the report; Konno N designed the research and contributed to the analysis; Asama H, Watanabe K, Nakamura J, Kikuchi H, Waragai Y and Takasumi M provided clinical advice; Kawana S and Hashimoto Y provided histopathological advice; Hikichi T and Ohira H supervised the report.

Institutional review board statement: This study was reviewed and approved by the Ethics Committee of the Fukushima Medical University Hospital.

Informed consent statement: Patients were not required to give informed consent for the study because the analysis used anonymous clinical data that were obtained after each patient agreed to treatment by written consent. For full disclosure, the details of the study are published on the home page of Fukushima Medical University.

Conflict-of-interest statement: We have no financial relationships to disclose.

Open-Access: This article is an open-access article which was selected by an in-house editor and fully peer-reviewed by external reviewers. It is distributed in accordance with the Creative

Commons Attribution Non Commercial (CC BY-NC 4.0) license, which permits others to distribute, remix, adapt, build upon this work non-commercially, and license their derivative works on different terms, provided the original work is properly cited and the use is non-commercial. See: <http://creativecommons.org/licenses/by-nc/4.0/>

Manuscript source: Unsolicited manuscript

Correspondence to: Tadayuki Takagi, MD, Associate Professor, Department of Gastroenterology, Fukushima Medical University, School of Medicine, 1 Hikarigaoka, Fukushima City, Fukushima Prefecture 960-1295, Japan. daccho@fmu.ac.jp
Telephone: +81-24-5471202
Fax: +81-24-5472055

Received: September 7, 2016
Peer-review started: September 9, 2016
First decision: October 20, 2016
Revised: February 25, 2017
Accepted: March 16, 2017
Article in press: March 17, 2017
Published online: June 10, 2017

Abstract

Among the three grades of neuroendocrine tumors (NETs), the prognosis for Grade 1 (G1) with surgery is very good. Therefore, we evaluated the prognoses of pancreatic NET (PNET) G1 patients without surgery. A total of 8 patients who were diagnosed with NET G1, with an observation period of more than 6 mo until surgery or without surgery, were recruited. The patients who underwent surgery were ultimately diagnosed using specimens obtained during the surgery, whereas the patients who did not undergo surgery were diagnosed using specimens obtained by endoscopic ultrasonography-guided fine needle aspiration. Overall, we mainly evaluated the observation period and tumor growth. The observation period for the five cases

with surgery ranged from 6-80 mo, and tumor growth was observed in one case. In contrast, the observation period for the three cases without surgery ranged from 17-54 mo, and tumor growth was not observed. Therefore, although the first-choice treatment for NETs is surgery, our experience includes certain NET G1 patients who were followed up without surgery.

Key words: Pancreatic neuroendocrine tumors; Metastasis; Neuroendocrine tumors Grade 1; Follow-up; Surgery

© **The Author(s) 2017.** Published by Baishideng Publishing Group Inc. All rights reserved.

Core tip: We evaluated the prognoses of pancreatic neuroendocrine tumor Grade 1 (NET G1) patients without surgery. A total of 8 patients who were diagnosed with NET G1, with an observation period of more than 6 mo until surgery or without surgery, were recruited. The observation period for the five cases with surgery ranged from 6-80 mo, and tumor growth was observed in one case. In contrast, the observation period for the three cases without surgery ranged from 17-54 mo, and tumor growth was not observed. Our experience thus includes certain NET G1 patients who were followed up without surgery.

Sugimoto M, Takagi T, Suzuki R, Konno N, Asama H, Watanabe K, Nakamura J, Kikuchi H, Waragai Y, Takasumi M, Kawana S, Hashimoto Y, Hikichi T, Ohira H. Pancreatic neuroendocrine tumor Grade 1 patients followed up without surgery: Case series. *World J Clin Oncol* 2017; 8(3): 293-299 Available from: URL: <http://www.wjgnet.com/2218-4333/full/v8/i3/293.htm> DOI: <http://dx.doi.org/10.5306/wjco.v8.i3.293>

INTRODUCTION

Neuroendocrine tumors (NETs) of the digestive organs are classified as Grade 1 (G1) or Grade 2 (G2) or as neuroendocrine carcinoma (NEC) by the World Health Organization (WHO) 2010 classification, which is based on cellular proliferative potential (Ki-67 index and the mitotic count)^[1]. Generally speaking, pancreatic NETs (PNETs) are a rare condition, accounting for only 2%-5% of pancreatic tumors^[2]. However, reports about PNETs have been increasing in direct proportion to more detailed diagnostic imaging.

Among the three grades of NETs, the prognosis for G1 is very good. It has been reported that the two-year progression-free survival rate for NET G1 is 92%^[3] and that the two-year survival rate is 100%^[4]. Five-year survival was reported to be 55.7% by Zeng *et al*^[5] and 82.6% by Yang *et al*^[6]. In other reports, however, the five-year survival rate was 90% or more^[4,7-10].

Regarding PNET treatment, the National Comprehensive Cancer Network^[11], the North American Neuroendocrine Tumor Society^[12], and the European Neuroendocrine Tumor Society^[13] have established guidelines. The first-choice

treatment is surgery for all grades of PNETs if the lesions are resectable.

Regarding diagnosing NETs before surgery, the efficacy of endoscopic ultrasonography-guided fine needle aspiration (EUS-FNA) has been reported^[14-17]. As mentioned above, the first-choice treatment for resectable PNETs is surgery. However, if a patient is diagnosed with NET G1 based on the Ki-67 index of an EUS-FNA specimen, there is a possibility that the patient will not agree to surgery because of a good prognosis.

Accordingly, we examined the following two topics in this report: (1) the prognoses of NET G1 diagnosed by EUS-FNA without surgery; and (2) the tumor growth of NET G1 from diagnosis until surgery.

CASE REPORT

A total of 34 patients were diagnosed with PNETs from February 2001 to December 2015. Among these patients, 21 underwent measurement of the Ki-67 index using specimens obtained by EUS-FNA or surgery (Figure 1). Thirteen patients were diagnosed with NET G1, seven patients were diagnosed with NET G2, and one patient was diagnosed with NEC. We recommended surgery for the NET patients, regardless of their WHO 2010 classification. However, if a patient did not agree to surgery, we only performed a follow-up. We focused on eight NET G1 patients who waited for surgery for no less than six months or who were followed up for no less than six months without surgery. The observation period was defined as no less than 6 mo based on a report on everolimus by Yao *et al*^[18]. In that report, the length of progression-free survival of the placebo group was 5.4 mo.

The patients who underwent surgery were ultimately diagnosed using specimens obtained during surgery, and the patients who did not undergo surgery were diagnosed using specimens obtained by EUS-FNA. UCT260, GF-UCT240-AL5, or GF-UC240P (Olympus Medical Systems, Tokyo, Japan), was used as the echoendoscope, and EU-ME1 or EU-ME2 (Olympus Medical Systems, Tokyo, Japan) was used as the ultrasonography diagnostic device. EchoTip 19 or 22 or 25G (Cook Medical Inc., NC, United States), and EZ Shot 22G (Olympus Medical Systems) and Expect 22G (Boston Scientific, MA, United States) were used as the aspiration needles.

All patients underwent echoendoscope insertion under sedation with midazolam. After we drew the target on the monitor and checked that no blood flow was present in the aspiration line, we punctured the target, passing through the gastric or duodenal wall. We excluded the stylet of the needle and connected a syringe with 10-20 mL negative pressure to the edge of the needle. We then moved the needle back and forth 20 times within the lesion. In particular, we moved the needle to multiple locations within the target (this has been reported as the "fanning method")^[19]. After we terminated the negative pressure, we removed the needle. The EUS-FNA sample was then placed on a glass slide, and the specimen was

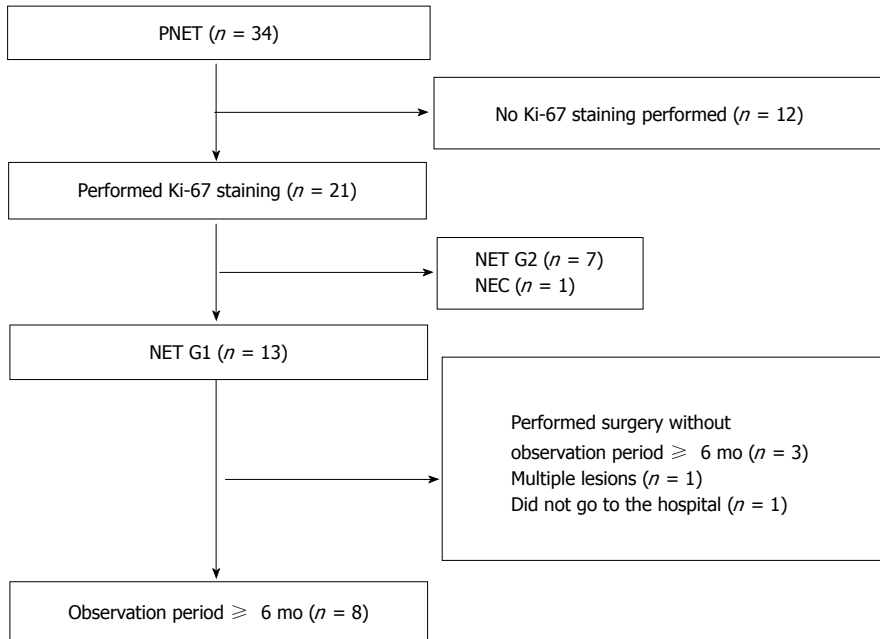


Figure 1 The characteristics of pancreatic neuroendocrine tumor patients at our hospital. A total of 34 patients were diagnosed with PNETs. Among these patients, 21 had specimens that underwent Ki-67 immunostaining. There were 13 PNET G1 patients, and the observation period was more than six months long for eight PNET G1 patients. PNET: Pancreatic neuroendocrine tumor; G1: Grade 1.

preserved in 15% formalin for histological diagnosis. All other samples were stained using Cyto-Quick. We observed the samples to assess whether a sufficient number of cells were sampled (rapid on-site cytological evaluation, or ROSE)^[20]. If a sample was sufficient, we halted the EUS-FNA; if a sample was not sufficient, we performed another aspiration. The samples obtained for histological diagnosis were stained with hematoxylin and eosin and were also immunostained for the following: Ki-67, chromogranin, synaptophysin (DAKO, Glostrup, Denmark), and CD56 (ZYMED, Carlsbad, CA, United States). The grades of the PNET cases were determined based on the Ki-67 index outlined in the WHO 2010 classification. The grades of the specimens obtained during surgery were also determined based on the Ki-67 index and the mitotic count, as defined in the WHO 2010 classification.

We reviewed each patient's characteristics (sex, age, initial tumor size, and location of the tumor), the method of diagnosis (EUS-FNA or surgery), the Ki-67 index, the mitotic count, whether the patient was functional or not, tumor marker levels, observation period, and tumor growth. The observation period was determined as the number of months from tumor discrimination by abdominal echo or computed tomography (CT) until the tumors were resected. For the patients without surgery, the observation period was determined as the number of months from tumor discrimination by abdominal echo or CT until the tumors were recognized by a final abdominal echo or CT. The patients specifically underwent dynamic CT or abdominal echo approximately 2 times per year, performed by an attending physician.

The age range of the patients was 41-81 years, and

the patient group included two males and six females (Table 1). The initial major tumor axes ranged from 3-40 mm. The locations of the tumors were the pancreatic head ($n = 3$), pancreatic body ($n = 3$), and pancreatic tail ($n = 2$). Five patients underwent surgery, and three patients did not but did undergo EUS-FNA. The Ki-67 index ranged from 0.4%-1.3% (five patients did not undergo precise measurement, but their index was < 2.0%). The mitotic count of the specimens obtained during surgery was 0-2/10 HPFs. Three patients were functional (1 with a growth hormone-producing tumors, 1 with a glucagonoma, and 1 with an insulinoma). AFP, NSE, CEA or CA19-9 was also measured, but these tumor markers were not elevated in any of the patients.

The observation periods ranged from 6-80 mo for patients 1-4. Only patient 2 was observed to exhibit tumor growth (Figure 2). In contrast, the observation periods for the three cases without surgery ranged from 17-54 mo, and all three cases did not show tumor growth. Among these three cases, one case is shown in Figure 3.

DISCUSSION

In this report, we examined whether we could follow up NET G1 without surgery. Among eight patients who were observed before surgery for no less than six months or who did not undergo surgery for at least six months, tumor growth was observed in one patient.

As described above, the prognoses of the NET G1 were very good. However, the data were relevant to prognoses only after surgery. Sadot *et al.*^[21] reported the prognoses of 104 PNET patients who were diagnosed pathologically

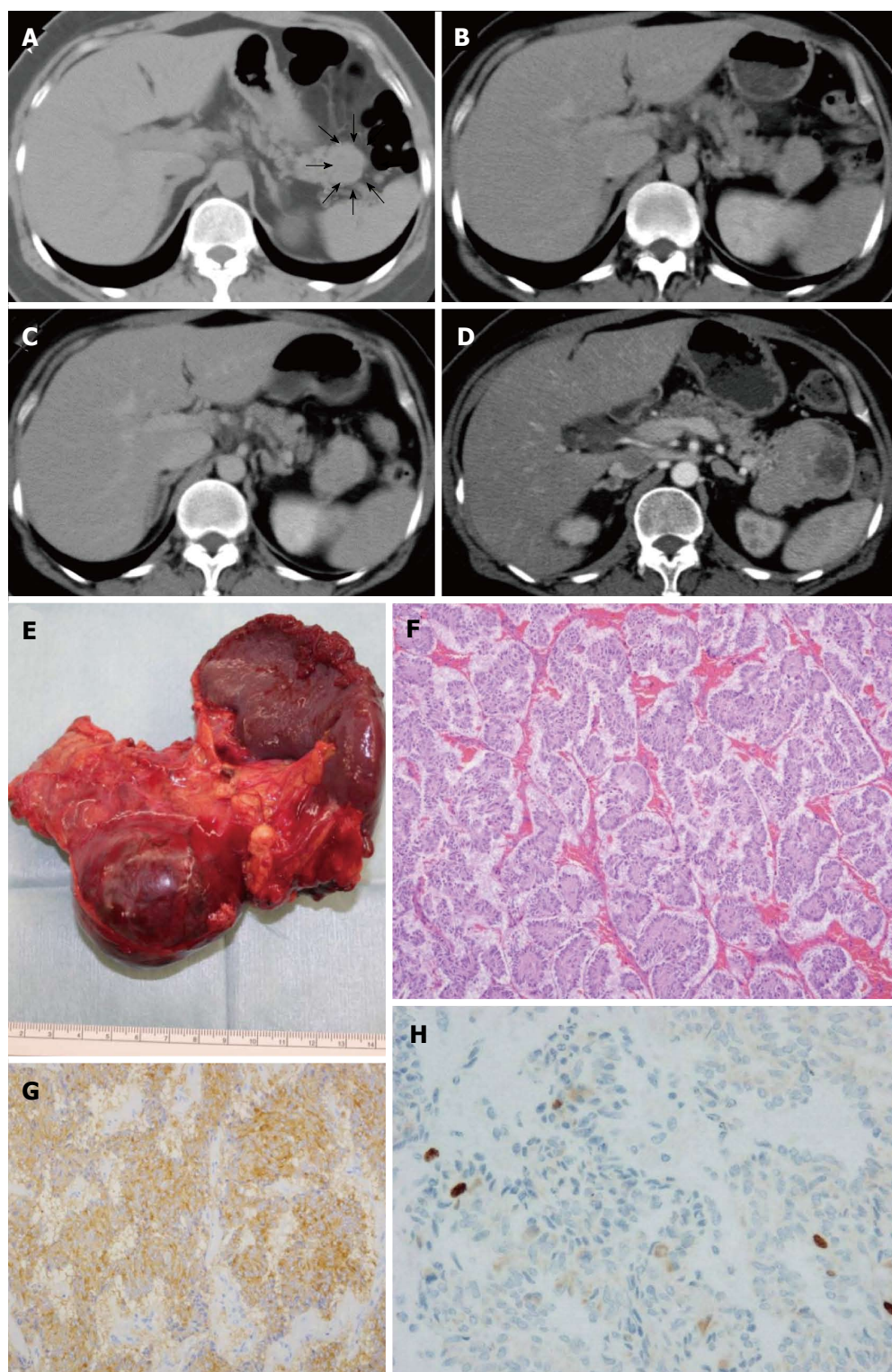


Figure 2 The patient who exhibited growth of the pancreatic neuroendocrine tumor. A: Abdominal CT. Initial CT indicated a PNET. The lesion was identified in the pancreatic tail. The diameter of the PNET was 34 mm (arrow); B: The lesion grew slightly after 11 mo; C: The lesion grew further after 29 mo; D: The diameter of the tumor became larger than 70 mm after 79 mo; E: The patient underwent distal pancreatectomy after 80 mo; F: Hematoxylin and eosin stain ($\times 100$). Tumor cells formed ribbon-like lines; G: Chromogranin A staining ($\times 200$). Tumor cells were chromogranin A positive; H: The Ki-67 index was 0.9%, with tumor grade G1 ($\times 200$). PNET: Pancreatic neuroendocrine tumor; CT: Computed tomography.

or by imaging. In that report, the diameters of all PNET lesions were smaller than 3.0 cm. Among the patients, 26 did not undergo surgery; those without surgery who were only followed up did not exhibit tumor growth or

metastases to other organs. Though cases diagnosed by only imaging were included in that report, certain PNET patients could be followed up without surgery. Additionally, Shin *et al*^[22] reported 72 gastroenteropancreatic NET cases

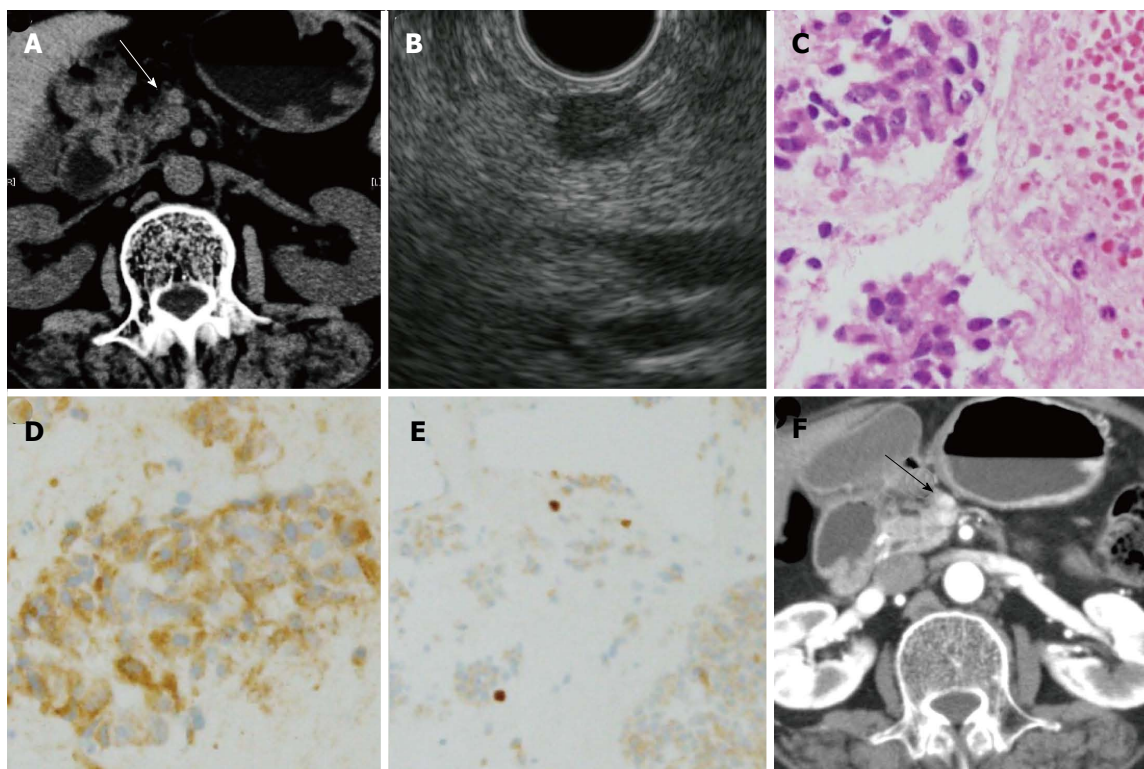


Figure 3 Pancreatic neuroendocrine tumor case followed up without surgery. A: Abdominal CT. A tumor was recognized in the pancreatic body. The diameter of the lesion was 8 mm; B: Endoscopic ultrasonography. The tumor was recognized as a low echoic lesion. A 22G needle was inserted into the tumor; C: Hematoxylin and eosin stain ($\times 400$). Spindle-shaped tumor cells with ellipsoidal nuclei formed fascicles; D: Chromogranin A staining ($\times 400$). Tumor cells were chromogranin A-positive; E: The Ki-67 index was $< 1.0\%$ ($\times 200$), with tumor grade G1; F: Abdominal CT. The tumor did not grow after 54 mo. PNET: Pancreatic neuroendocrine tumor; CT: Computed tomography.

with liver metastases. Among these cases, 12 were NET G1 (17%). Zerbi *et al.*^[23] reported that 16.1% of NET G1 showed metastases to the lymph nodes and that 12.6% of NET G1 showed liver metastases. In addition, Gaujoux *et al.*^[24] reported 20 PNET G1 cases with liver metastases. In the present report, one case exhibited tumor growth in the observation period. Therefore, we have to follow up NET G1 while taking the risk factors for metastases and tumor growth into consideration.

What are the specific risk factors for NETs? In the past reports, nonfunction and symptoms such as abdominal pain, weight loss, and jaundice were reported to be risk factors for liver metastases. Moreover, Tao *et al.*^[25] reported that elevated tumor markers (AFP, CEA, CA125, CA19-9) were predictive factors for liver metastases or lymph node metastases, and Jiang *et al.*^[26] reported that a tumor diameter larger than 25 mm was a risk factor for lymph node metastases. In the present report, the lesion diameters of 3 cases were larger than 25 mm; the patients were numbered 2, 4, and 5 (Table 1). Though patients 4 and 5 underwent surgery six months after diagnosis, the lesion of patient 2 grew from 34 to 76 mm in diameter. Though past studies involved not only NET G1 but also other grades of NETs, the risk factors cited in these past reports were considered to be important to determine follow-up without surgery.

In this report, there were certain limitations. First, the research was retrospectively performed at a single

institution, and a small number of patients were included. More patients will be needed for more conclusive research. Second, the followed-up patients were diagnosed only by EUS-FNA. However, a high accordance rate between specimens obtained during surgery and specimens obtained by EUS-FNA was reported in past studies^[14-17], and for NET G1, the accordance rate between specimens obtained during surgery and specimens obtained by EUS-FNA was 92.3% (36/39)^[14-17] (Larghi, 2012 #59). We believe that we relatively correctly judged the grading based on the Ki-67 index of NET G1. Third, mitotic counts were not measured in EUS-FNA specimens. Therefore, surgery is desirable as a treatment for NETs. Fourth, we did not measure several of the tumor markers described above. Rossi *et al.*^[27] reported the efficacy of plasma chromogranin A as a predictive factor for NET progression; this should be studied further in the future.

The first-choice treatment for NETs is absolutely surgery. However, our experience includes certain patients who were followed up without surgery because of a lack of consent for surgery.

ACKNOWLEDGMENTS

We thank all the staff in the Department of Gastroenterology, Fukushima Medical University; the Department of Endoscopy, Fukushima Medical University Hospital; and the ward on the 8th west floor of Fukushima Medical

Table 1 Prognoses of pancreatic neuroendocrine tumor Grade 1 patients

	Sex	Age (yr)	Initial size (mm)	Location of tumor	Method of final diagnosis	Ki-67 index (%)	Mitotic count (/10 HPFs)	Function	Elevated tumor markers	Observation period (mo)	Tumor growth (mm)
1	F	79	19	Body	Surgery	< 2.0	0	No	No	6	No
2	F	41	34	Tail	Surgery	0.9	2	Yes	No	80	76
3	M	69	3	Body	Surgery	< 2.0	0	Yes	No	15	No
4	M	55	40	Head	Surgery	< 1.0	0	Yes	No	6	No
5	F	73	32	Head	Surgery	1.3	0	No	No	9	No
6	F	81	4	Head	EUS-FNA	< 1.0	Difficult	No	No	22	No
7	F	64	8	Tail	EUS-FNA	0.4	Difficult	No	No	17	No
8	F	70	8	Body	EUS-FNA	< 1.0	Difficult	No	No	54	No

M: Male; F: Female; EUS-FNA: Endoscopic ultrasonography-guided fine needle aspiration.

University Hospital as well as American Journal Experts, an English-language proofreading company.

COMMENTS

Case characteristics

Pancreatic neuroendocrine tumor Grade 1 (PNET G1) patients who were followed for more than six months before surgery or who were followed up without surgery for more than six months.

Clinical diagnosis

PNETs were diagnosed using specimens obtained by endoscopic ultrasonography-guided fine needle aspiration (EUS-FNA) or obtained during surgery.

Differential diagnosis

Metastatic pancreatic tumors, accessory spleen, acinar cell carcinoma, paraganglioma.

Laboratory diagnosis

All tumor markers were not elevated.

Imaging diagnosis

PNETs are pancreatic tumors that are strongly enhanced on contrast-enhanced computed tomography.

Pathological diagnosis

Spindle-shaped tumor cells were observed. The tumor cells formed funicular lines and were positive for immunostaining of chromogranin A.

Treatment

Surgery or follow-up.

Related reports

The prognosis of PNET G1 is very good. However, certain PNET G1 patients exhibit metastases. Therefore, the first-choice treatment for resectable NETs is surgery.

Term explanation

EUS: A technique in which an echoendoscope is used to enable observation of the chest and abdominal organs, namely, the esophagus, stomach or duodenum; EUS-FNA: A technique used to obtain specimens from chest and abdominal lesions by aspiration under EUS guidance.

Experiences and lessons

The gold standard of treatment for NET G1 is surgery. However, if patients are diagnosed with NET G1 by EUS-FNA, there is a possibility that the patients will not agree to surgery. In fact, certain NET G1 patients did not agree to surgery

in the current case series, so the authors only followed up these patients. If we only follow up PNET G1 patients, the authors have to be careful about certain risk factors for metastasis of the PNETs.

Peer-review

This is an interesting paper on whether patients with G1 pancreatic NET can be followed without surgery using a case series of patients.

REFERENCES

- 1 **Bosman FT**, Carneiro F, Hruban RH, Theise ND, World Health Organization, International Agency for Research on Cancer. WHO classification of tumours of the digestive system. 4th ed. Lyon: International Agency for Research on Cancer, 2010
- 2 **Yao JC**, Hassan M, Phan A, Dagohoy C, Leary C, Mares JE, Abdalla EK, Fleming JB, Vauthey JN, Rashid A, Evans DB. One hundred years after "carcinoid": epidemiology of and prognostic factors for neuroendocrine tumors in 35,825 cases in the United States. *J Clin Oncol* 2008; **26**: 3063-3072 [PMID: 18565894 DOI: 10.1200/jco.2007.15.4377]
- 3 **Cho JH**, Ryu JK, Song SY, Hwang JH, Lee DK, Woo SM, Joo YE, Jeong S, Lee SO, Park BK, Cheon YK, Han J, Kim TN, Lee JK, Moon SH, Kim H, Park ET, Hwang JC, Kim TH, Jeon TJ, Cho CM, Choi HS, Lee WJ. Prognostic Validity of the American Joint Committee on Cancer and the European Neuroendocrine Tumors Staging Classifications for Pancreatic Neuroendocrine Tumors: A Retrospective Nationwide Multicenter Study in South Korea. *Pancreas* 2016; **45**: 941-946 [PMID: 26765964 DOI: 10.1097/mpa.0000000000000586]
- 4 **Pape UF**, Jann H, Müller-Nordhorn J, Bockelbrink A, Berndt U, Willich SN, Koch M, Röcken C, Rindi G, Wiedenmann B. Prognostic relevance of a novel TNM classification system for upper gastroenteropancreatic neuroendocrine tumors. *Cancer* 2008; **113**: 256-265 [PMID: 18506737 DOI: 10.1002/cncr.23549]
- 5 **Zeng YJ**, Liu L, Wu H, Lai W, Cao JZ, Xu HY, Wang J, Chu ZH. Clinicopathological features and prognosis of gastroenteropancreatic neuroendocrine tumors: analysis from a single-institution. *Asian Pac J Cancer Prev* 2013; **14**: 5775-5781 [PMID: 24289577]
- 6 **Yang M**, Tian BL, Zhang Y, Su AP, Yue PJ, Xu S, Wang L. Evaluation of the World Health Organization 2010 grading system in surgical outcome and prognosis of pancreatic neuroendocrine tumors. *Pancreas* 2014; **43**: 1003-1008 [PMID: 24945681 DOI: 10.1097/mpa.0000000000000153]
- 7 **Lewkowicz E**, Trófimiuk-Müldner M, Wysocka K, Pach D, Kiełtyka A, Stefańska A, Sowa-Staszczak A, Tomaszewska R, Hubalewska-Dydejczyk A. Gastroenteropancreatic neuroendocrine neoplasms: a 10-year experience of a single center. *Pol Arch Med Wewn* 2015; **125**: 337-346 [PMID: 25924181]
- 8 **Yang M**, Zeng L, Zhang Y, Su AP, Yue PJ, Tian BL. Surgical treatment and clinical outcome of nonfunctional pancreatic neuroendocrine tumors: a 14-year experience from one single center. *Medicine* (Baltimore) 2014; **93**: e94 [PMID: 25396335 DOI: 10.1097/

- md.0000000000000094]
- 9 **Wang YH**, Lin Y, Xue L, Wang JH, Chen MH, Chen J. Relationship between clinical characteristics and survival of gastroenteropancreatic neuroendocrine neoplasms: A single-institution analysis (1995-2012) in South China. *BMC Endocr Disord* 2012; **12**: 30 [PMID: 23194346 DOI: 10.1186/1472-6823-12-30]
 - 10 **Shiba S**, Morizane C, Hiraoka N, Sasaki M, Koga F, Sakamoto Y, Kondo S, Ueno H, Ikeda M, Yamada T, Shimada K, Kosuge T, Okusaka T. Pancreatic neuroendocrine tumors: A single-center 20-year experience with 100 patients. *Pancreatol* 2016; **16**: 99-105 [PMID: 26718527 DOI: 10.1016/j.pan.2015.11.001]
 - 11 **National Comprehensive Cancer Network (NCCN)**. National Comprehensive Cancer Network (NCCN) clinical practice guidelines in oncology. Neuroendocrine tumors. 2011. Available from: URL: <http://www.nccn.org/>
 - 12 **Kulke MH**, Anthony LB, Bushnell DL, de Herder WW, Goldsmith SJ, Klimstra DS, Marx SJ, Pasieka JL, Pommier RF, Yao JC, Jensen RT. NANETS treatment guidelines: well-differentiated neuroendocrine tumors of the stomach and pancreas. *Pancreas* 2010; **39**: 735-752 [PMID: 20664472 DOI: 10.1097/MPA.0b013e3181ebb168]
 - 13 **Steinmüller T**, Kianmanesh R, Falconi M, Scarpa A, Taal B, Kwekkeboom DJ, Lopes JM, Perren A, Nikou G, Yao J, Delle Fave GF, O'Toole D; Frascati Consensus Conference participants. Consensus guidelines for the management of patients with liver metastases from digestive (neuro)endocrine tumors: foregut, midgut, hindgut, and unknown primary. *Neuroendocrinology* 2008; **87**: 47-62 [PMID: 18097131 DOI: 10.1159/000111037]
 - 14 **Larghi A**, Capurso G, Carnuccio A, Ricci R, Alfieri S, Galasso D, Lugli F, Bianchi A, Panzuto F, De Marinis L, Falconi M, Delle Fave G, Doglietto GB, Costamagna G, Rindi G. Ki-67 grading of nonfunctioning pancreatic neuroendocrine tumors on histologic samples obtained by EUS-guided fine-needle tissue acquisition: a prospective study. *Gastrointest Endosc* 2012; **76**: 570-577 [PMID: 22898415 DOI: 10.1016/j.gie.2012.04.477]
 - 15 **Hasegawa T**, Yamao K, Hijioaka S, Bhatia V, Mizuno N, Hara K, Imaoka H, Niwa Y, Tajika M, Kondo S, Tanaka T, Shimizu Y, Kinoshita T, Kohsaki T, Nishimori I, Iwasaki S, Saibara T, Hosoda W, Yatabe Y. Evaluation of Ki-67 index in EUS-FNA specimens for the assessment of malignancy risk in pancreatic neuroendocrine tumors. *Endoscopy* 2014; **46**: 32-38 [PMID: 24218309 DOI: 10.1055/s-0033-1344958]
 - 16 **Unno J**, Kanno A, Masamune A, Kasajima A, Fujishima F, Ishida K, Hamada S, Kume K, Kikuta K, Hirota M, Motoi F, Unno M, Shimosegawa T. The usefulness of endoscopic ultrasound-guided fine-needle aspiration for the diagnosis of pancreatic neuroendocrine tumors based on the World Health Organization classification. *Scand J Gastroenterol* 2014; **49**: 1367-1374 [PMID: 25180490 DOI: 10.3109/00365521.2014.934909]
 - 17 **Sugimoto M**, Takagi T, Hikichi T, Suzuki R, Watanabe K, Nakamura J, Kikuchi H, Konno N, Waragai Y, Asama H, Takasumi M, Watanabe H, Obara K, Ohira H. Efficacy of endoscopic ultrasonography-guided fine needle aspiration for pancreatic neuroendocrine tumor grading. *World J Gastroenterol* 2015; **21**: 8118-8124 [PMID: 26185384 DOI: 10.3748/wjg.v21.i26.8118]
 - 18 **Yao JC**, Shah MH, Ito T, Bohas CL, Wolin EM, Van Cutsem E, Hobday TJ, Okusaka T, Capdevila J, de Vries EG, Tomassetti P, Pavel ME, Hoosen S, Haas T, Lincy J, Lebwohl D, Öberg K. Everolimus for advanced pancreatic neuroendocrine tumors. *N Engl J Med* 2011; **364**: 514-523 [PMID: 21306238 DOI: 10.1056/NEJMoa1009290]
 - 19 **Bang JY**, Magee SH, Ramesh J, Trevino JM, Varadarajulu S. Randomized trial comparing fanning with standard technique for endoscopic ultrasound-guided fine-needle aspiration of solid pancreatic mass lesions. *Endoscopy* 2013; **45**: 445-450 [PMID: 23504490 DOI: 10.1055/s-0032-1326268]
 - 20 **Hikichi T**, Irisawa A, Bhutani MS, Takagi T, Shibukawa G, Yamamoto G, Wakatsuki T, Imamura H, Takahashi Y, Sato A, Sato M, Ikeda T, Hashimoto Y, Tasaki K, Watanabe K, Ohira H, Obara K. Endoscopic ultrasound-guided fine-needle aspiration of solid pancreatic masses with rapid on-site cytological evaluation by endosonographers without attendance of cytopathologists. *J Gastroenterol* 2009; **44**: 322-328 [PMID: 19274426 DOI: 10.1007/s00535-009-0001-6]
 - 21 **Sadot E**, Reidy-Lagunes DL, Tang LH, Do RK, Gonen M, D'Angelica MI, DeMatteo RP, Kingham TP, Groot Koerkamp B, Untch BR, Brennan MF, Jarnagin WR, Allen PJ. Observation versus Resection for Small Asymptomatic Pancreatic Neuroendocrine Tumors: A Matched Case-Control Study. *Ann Surg Oncol* 2016; **23**: 1361-1370 [PMID: 26597365 DOI: 10.1245/s10434-015-4986-1]
 - 22 **Shin Y**, Ha SY, Hyeon J, Lee B, Lee J, Jang KT, Kim KM, Park YS, Park CK. Gastroenteropancreatic Neuroendocrine Tumors with Liver Metastases in Korea: A Clinicopathological Analysis of 72 Cases in a Single Institute. *Cancer Res Treat* 2015; **47**: 738-746 [PMID: 25687852 DOI: 10.4143/crt.2014.224]
 - 23 **Zerbi A**, Falconi M, Rindi G, Delle Fave G, Tomassetti P, Pasquali C, Capitanio V, Boninsegna L, Di Carlo V. Clinicopathological features of pancreatic endocrine tumors: a prospective multicenter study in Italy of 297 sporadic cases. *Am J Gastroenterol* 2010; **105**: 1421-1429 [PMID: 20087335 DOI: 10.1038/ajg.2009.747]
 - 24 **Gaujoux S**, Gonen M, Tang L, Klimstra D, Brennan MF, D'Angelica M, DeMatteo R, Allen PJ, Jarnagin W, Fong Y. Synchronous resection of primary and liver metastases for neuroendocrine tumors. *Ann Surg Oncol* 2012; **19**: 4270-4277 [PMID: 22752376 DOI: 10.1245/s10434-012-2462-8]
 - 25 **Tao M**, Yuan C, Xiu D, Shi X, Tao L, Ma Z, Jiang B, Zhang Z, Zhang L, Wang H. Analysis of risk factors affecting the prognosis of pancreatic neuroendocrine tumors. *Chin Med J (Engl)* 2014; **127**: 2924-2928 [PMID: 25131229]
 - 26 **Jiang Y**, Jin JB, Zhan Q, Deng XX, Shen BY. Impact and Clinical Predictors of Lymph Node Metastases in Nonfunctional Pancreatic Neuroendocrine Tumors. *Chin Med J (Engl)* 2015; **128**: 3335-3344 [PMID: 26668149 DOI: 10.4103/0366-6999.171427]
 - 27 **Rossi RE**, Garcia-Hernandez J, Meyer T, Thirlwell C, Watkins J, Martin NG, Caplin ME, Toumpanakis C. Chromogranin A as a predictor of radiological disease progression in neuroendocrine tumours. *Ann Transl Med* 2015; **3**: 118 [PMID: 26207246 DOI: 10.3978/j.issn.2305-5839.2015.04.23]

P- Reviewer: He SQ, Kleeff J, Shiryajev YN, Somani P, Tsoulfas G
S- Editor: Song XX **L- Editor:** A **E- Editor:** Lu YJ





Published by **Baishideng Publishing Group Inc**
7901 Stoneridge Drive, Suite 501, Pleasanton, CA 94588, USA
Telephone: +1-925-223-8242
Fax: +1-925-223-8243
E-mail: bpgoffice@wjgnet.com
Help Desk: <http://www.f6publishing.com/helpdesk>
<http://www.wjgnet.com>

