

# World Journal of *Gastrointestinal Endoscopy*

*World J Gastrointest Endosc* 2017 May 16; 9(5): 204-242



### ORIGINAL ARTICLE

#### Retrospective Study

- 204 Association of trainee participation with adenoma and polyp detection rates

*Qayed E, Shea L, Goebel S, Bostick RM*

- 211 Nerve preserving vs standard laparoscopic sacropexy: Postoperative bowel function

*Cosma S, Petruzzelli P, Danese S, Benedetto C*

#### Observational Study

- 220 Adult intussusception: A case series and review

*Shenoy S*

### META-ANALYSIS

- 228 Does music reduce anxiety and discomfort during flexible sigmoidoscopy? A systematic review and meta-analysis

*Shanmuganandan AP, Siddiqui MRS, Farkas N, Sran K, Thomas R, Mohamed S, Swift RI, Abulafi AM*

### CASE REPORT

- 238 Successful endoscopic treatment of an intraductal papillary neoplasm of the bile duct

*Natov NS, Horton LC, Hegde SR*

## Contents

*World Journal of Gastrointestinal Endoscopy*  
Volume 9 Number 5 May 16, 2017

### ABOUT COVER

Editorial Board Member of *World Journal of Gastrointestinal Endoscopy*, AMarcelo Campos Silva, MSc, Academic Research, Medical Assistant, Department of Gastroenterology and Endoscopy, Hospital Mae de Deus, Porto Alegre, RS 90430-091, Brazil

### AIM AND SCOPE

*World Journal of Gastrointestinal Endoscopy* (*World J Gastrointest Endosc*, *WJGE*, online ISSN 1948-5190, DOI: 10.4253) is a peer-reviewed open access (OA) academic journal that aims to guide clinical practice and improve diagnostic and therapeutic skills of clinicians.

*WJGE* covers topics concerning gastroscopy, intestinal endoscopy, colonoscopy, capsule endoscopy, laparoscopy, interventional diagnosis and therapy, as well as advances in technology. Emphasis is placed on the clinical practice of treating gastrointestinal diseases with or under endoscopy.

We encourage authors to submit their manuscripts to *WJGE*. We will give priority to manuscripts that are supported by major national and international foundations and those that are of great clinical significance.

### INDEXING/ABSTRACTING

*World Journal of Gastrointestinal Endoscopy* is now indexed in Emerging Sources Citation Index (Web of Science), PubMed, and PubMed Central.

### FLYLEAF

#### I-III Editorial Board

### EDITORS FOR THIS ISSUE

Responsible Assistant Editor: *Xiang Li*  
Responsible Electronic Editor: *Huan-Liang Wu*  
Proofing Editor-in-Chief: *Lian-Sheng Ma*

Responsible Science Editor: *Jin-Xin Kong*  
Proofing Editorial Office Director: *Xiu-Xia Song*

NAME OF JOURNAL  
*World Journal of Gastrointestinal Endoscopy*

ISSN  
ISSN 1948-5190 (online)

LAUNCH DATE  
October 15, 2009

FREQUENCY  
Monthly

EDITORS-IN-CHIEF  
**Atsushi Imagawa, PhD, Director, Doctor**, Department of Gastroenterology, Mitoyo General Hospital, Kan-onji, Kagawa 769-1695, Japan

**Juan Manuel Herrerias Gutierrez, PhD, Academic Fellow, Chief Doctor, Professor**, Unidad de Gestión Clínica de Aparato Digestivo, Hospital Universitario Virgen Macarena, Sevilla 41009, Sevilla, Spain

EDITORIAL BOARD MEMBERS  
All editorial board members resources online at <http://www.wjgnet.com>

[www.wjgnet.com/1948-5190/editorialboard.htm](http://www.wjgnet.com/1948-5190/editorialboard.htm)

EDITORIAL OFFICE  
Xiu-Xia Song, Director  
*World Journal of Gastrointestinal Endoscopy*  
Baishideng Publishing Group Inc  
7901 Stoneridge Drive, Suite 501, Pleasanton, CA 94588, USA  
Telephone: +1-925-2238242  
Fax: +1-925-2238243  
E-mail: [editorialoffice@wjgnet.com](mailto:editorialoffice@wjgnet.com)  
Help Desk: <http://www.f6publishing.com/helpdesk>  
<http://www.wjgnet.com>

PUBLISHER  
Baishideng Publishing Group Inc  
7901 Stoneridge Drive, Suite 501, Pleasanton, CA 94588, USA  
Telephone: +1-925-2238242  
Fax: +1-925-2238243  
E-mail: [bpgoffice@wjgnet.com](mailto:bpgoffice@wjgnet.com)  
Help Desk: <http://www.f6publishing.com/helpdesk>  
<http://www.wjgnet.com>

PUBLICATION DATE  
May 16, 2017

COPYRIGHT  
© 2017 Baishideng Publishing Group Inc. Articles published by this Open-Access journal are distributed under the terms of the Creative Commons Attribution Non-commercial License, which permits use, distribution, and reproduction in any medium, provided the original work is properly cited, the use is non commercial and is otherwise in compliance with the license.

SPECIAL STATEMENT  
All articles published in journals owned by the Baishideng Publishing Group (BPG) represent the views and opinions of their authors, and not the views, opinions or policies of the BPG, except where otherwise explicitly indicated.

INSTRUCTIONS TO AUTHORS  
<http://www.wjgnet.com/bpg/gerinfo/204>

ONLINE SUBMISSION  
<http://www.f6publishing.com>

## Retrospective Study

**Nerve preserving vs standard laparoscopic sacropexy:  
Postoperative bowel function**

Stefano Cosma, Paolo Petruzzelli, Saverio Danese, Chiara Benedetto

Stefano Cosma, Chiara Benedetto, Department of Surgical Sciences, University of Torino, 10126 Torino, Italy

Paolo Petruzzelli, Saverio Danese, Department of Gynecology and Obstetrics, City of Health and Science, 10126 Torino, Italy

**Author contributions:** Cosma S contributed to study conception, design, data acquisition, analysis, interpretation, and writing of article; Benedetto C contributed to editing, reviewing and final approval of article; Petruzzelli P and Danese S performed surgery.

**Institutional review board statement:** This retrospective study was performed without direct contact with patients and no individual patient information was revealed. The described experimental procedure (nerve preserving laparoscopic sacropexy) had already been approved by the Local Ethics committee for our preliminary anatomoclinical published research and subsequently introduced in the clinical practice of the department. Therefore, this study had no need of further review by the local Institutional Review Board.

**Informed consent statement:** All study participants provided informed written consent before undergoing surgery and for personal data processing.

**Conflict-of-interest statement:** All authors declare that they have no conflict of interest.

**Data sharing statement:** Anonymous dataset is available from the corresponding author at [cosmastefano@libero.it](mailto:cosmastefano@libero.it).

**Open-Access:** This article is an open-access article which was selected by an in-house editor and fully peer-reviewed by external reviewers. It is distributed in accordance with the Creative Commons Attribution Non Commercial (CC BY-NC 4.0) license, which permits others to distribute, remix, adapt, build upon this work non-commercially, and license their derivative works on different terms, provided the original work is properly cited and the use is non-commercial. See: <http://creativecommons.org/licenses/by-nc/4.0/>

**Manuscript source:** Invited manuscript

**Correspondence to:** Stefano Cosma, MD, PhD, Department

of Surgical Sciences, University of Torino, Via Ventimiglia 3, 10126 Torino, Italy. [cosmastefano@libero.it](mailto:cosmastefano@libero.it)

Telephone: +39-011-3131711

Fax: +39-011-3134142

Received: November 24, 2016

Peer-review started: November 27, 2016

First decision: January 16, 2017

Revised: February 19, 2017

Accepted: March 12, 2017

Article in press: March 13, 2017

Published online: May 16, 2017

**Abstract****AIM**

To compare our developed nerve preserving technique with the non-nerve preserving one in terms of *de novo* bowel symptoms.

**METHODS**

Patients affected by symptomatic apical prolapse, admitted to our department and treated by nerve preserving laparoscopic sacropexy (LSP) between October, 2010 and April, 2013 (Group A or "interventional group") were compared to those treated with the standard LSP, between September, 2007 and December, 2009 (Group B or "control group"). Functional and anatomical data were recorded prospectively at the first clinical review, at 1, 6 mo, and every postsurgical year. Questionnaires were filled in by the patients at each follow-up clinical evaluation.

**RESULTS**

Forty-three women were enrolled, 25/43 were treated by our nerve preserving technique and 18/43 by the standard one. The data from the interventional group were collected at a similar follow-up (> 18 mo) as those collected for the control group. No cases of *de novo*

bowel dysfunction were observed in group A against 4 cases in group B ( $P = 0.02$ ). Obstructed defecation syndrome (ODS) was highlighted by an increase in specific questionnaires scores and documented by the anorectal manometry. There were no cases of *de novo* constipation in the two groups. No major intraoperative complications were reported for our technique and it took no longer than the standard procedure. Apical recurrence and late complications were comparable in the two groups.

## CONCLUSION

Our nerve preserving technique seems superior in terms of prevention of *de novo* bowel dysfunction compared to the standard one and had no major intraoperative complications.

**Key words:** Apical prolapse; Bowel dysfunction; Laparoscopic sacrocolpopexy; Nerve sparing; Vaginal vault prolapse

© The Author(s) 2017. Published by Baishideng Publishing Group Inc. All rights reserved.

**Core tip:** Laparoscopic sacropexy is associated with postoperative bowel dysfunction (constipation, obstructed defecation syndrome) in 10%-50% of cases, with significant worsening in the quality of life. Iatrogenic denervation of the autonomic pelvic nerves was reported as a relevant cause of this kind of dysfunction. The aim of this observational study was to evaluate the safety and efficacy of our nerve preserving technique.

Cosma S, Petruzzelli P, Danese S, Benedetto C. Nerve preserving vs standard laparoscopic sacropexy: Postoperative bowel function. *World J Gastrointest Endosc* 2017; 9(5): 211-219 Available from: URL: <http://www.wjgnet.com/1948-5190/full/v9/i5/211.htm> DOI: <http://dx.doi.org/10.4253/wjge.v9.i5.211>

## INTRODUCTION

Abdominal sacropexy was first described in 1957<sup>[1]</sup> and the first formal abdominal technique was defined by Lane<sup>[2]</sup> in 1962. A study reported the first laparoscopic sacropexy (LSP) in 1993<sup>[3]</sup>, which led to its adoption and further development by different schools<sup>[4-6]</sup>. Since then various adaptations have been described in literature with different indications, techniques, meshes and associated procedures. It has been reported that the laparoscopic approach is as effective as the abdominal approach<sup>[7]</sup>, with the advantages of less blood loss, a shorter hospitalization and a more rapid post-surgical recovery.

Although sacropexy does remain the "gold standard" procedure for apical prolapse<sup>[8]</sup>, the subjective outcome of the procedure has been reported to be not so satisfactory as its anatomic outcome<sup>[9]</sup>. Literature has reported a 10% to 50% new onset of bowel symptoms

after abdominal and laparoscopic surgery, 18% of voiding problems and 8% of women with sexual dysfunctions<sup>[10]</sup>.

Although there is abundant literature of the underlying causes of urinary dysfunctions and the procedures that might be adopted to avoid them<sup>[11]</sup>, there is little on the underlying causes of bowel dysfunctions.

Our recently published anatomoclinical data revealed a correlation between the occurrence of iatrogenic denervation during LSP and the postoperative onset of the obstructed defecation syndrome (ODS), identifying the source of this kind of post-LPS bowel dysfunction in the superior hypogastric plexus (SHP) iatrogenic lesion, during sacral dissection<sup>[12]</sup>. Consequently, we adopted the use of a modified dissection technique with the aim of preserving nervous pelvic autonomic pathways.

The main aim of this study was to compare the outcomes of our nerve preserving technique to those of the standard one in terms of incidence of *de novo* ODS and constipation. The secondary endpoints were to compare the other functional outcomes, the anatomical results and complications.

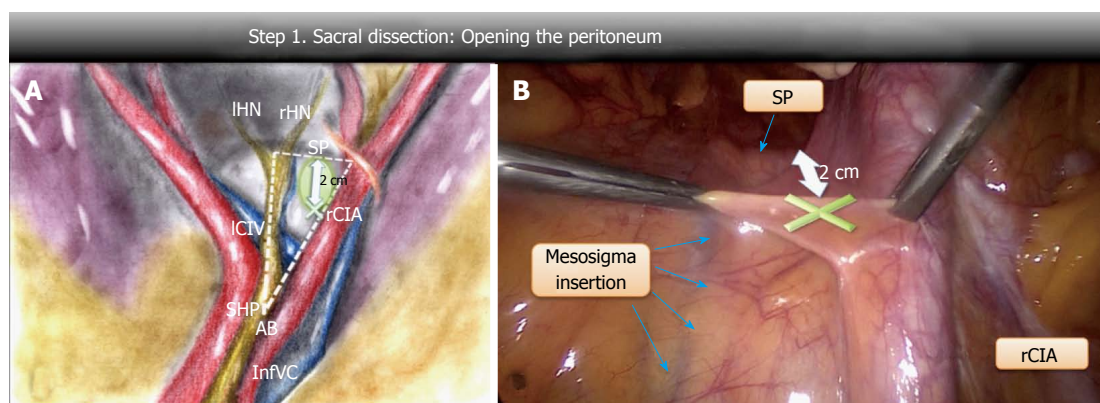
## MATERIALS AND METHODS

A retrospective study was carried out on patients affected by symptomatic apical prolapse, admitted to the Department of Surgical Sciences of the University of Torino between October 2010 to April 2013 and treated with nerve preserving LSP (Group A or "interventional group"). The postoperative ODS and complications of these patients were compared to those of the patients treated by the standard LSP (Group B or "control group") between September 2007 and December 2009, the study population of our preliminary anatomoclinical research<sup>[12]</sup>.

All women who presented with genital apical prolapse (vaginal or utero-vaginal), stages  $\geq 2$ , according to the Pelvic Organ Prolapse Quantification (POP-Q) System<sup>[13]</sup>, with clinical indication for LSP, were eligible. Patients were excluded if they were not candidates for general anaesthesia, had a history of sacropexy and/or previous rectal prolapse surgery or presacral surgery.

The data on patient age, parity, body mass index, previous abdominopelvic surgery, operating time, amount of blood loss, length of hospital stay, intraoperative, early and late postoperative complications were prospectively recorded in a computerized database. Subjective data on bladder, bowel, sexual functions and POP-Q examination were recorded prospectively at the first clinical review, then at 1 and 6 mo, followed by every postsurgical year. Questionnaires were filled in by the patients at baseline, 6 mo and then at the end of each follow-up clinical evaluation. An Italian translation of the Pelvic Floor Distress Inventory Short Form 20 (PFDI-20)<sup>[14]</sup>, the Agachan-Wexner constipation scoring system<sup>[15]</sup> and the Prolapse/Incontinence Sexual Questionnaire Short Form (PISQ-12)<sup>[16]</sup>, were used. Each patient had preoperative urodynamic tests; if stress





**Figure 1 Step 1: Opening the peritoneum.** A: Schematic drawing of the “dissection triangle” on the right lumbosacral spine with the safe area (X) for opening the peritoneum; B: Laparoscopic view of the peritoneal opening point (X). rCIA: Right common iliac artery; SP: Sacral promontory; AB: Aortic bifurcation; SHP: Superior hypogastric plexus; rHN: Right hypogastric nerve; IHN: Left hypogastric nerve; InfVC: Inferior vena cava; ICIV: Left common iliac vein.

urinary incontinence (SUI) was present, transobturator tension-free vaginal tape procedure (TVT) (Gynecare TVT-O, Ethicon Inc., Somerville, NJ) was used. The symptomatic postoperative findings, early and late complications of our two groups were then compared. Constipation was defined as  $\leq 2$  defecations/week for at least 3 mo; ODS was evidenced by the association of the following symptoms: Difficulty in evacuation, excessive straining during defecation, a sensation of incomplete evacuation, prolonged time to defecate and anal pain<sup>[17]</sup> and evidenced by an increase in the Agachan-Wexner score and the PFDI-20 (CRADI-8) score in answer to the questions: “Do you feel you need to strain too hard to have a bowel movement?”; “Do you usually have pain when you pass your stools?”; “Do you feel you have not completely emptied your bowel at the end of a bowel movement?”.

To avoid bias we collected the data from the interventional group at a similar follow-up as those collected in the previous review for the control group. The application of the experimental procedure was approved by the local Institutional Review Board and written informed consent was obtained from all patients before surgery.

All surgical procedures were performed by two senior gynaecologists. One 10-mm umbilical trocar, two 5-mm ancillary lateral ports and a 10-mm suprapubic ancillary trocar were used. The sigmoid colon was temporarily fixed to the abdominal wall with straight needles to improve the exposure of the promontorium and the right lumbosacral spine. A standard laparoscopic approach was used in group B patients<sup>[4,18]</sup>. Whilst group A patients were treated by our nerve preserving technique, which preserved the SHP, right hypogastric nerve (rHN), lumbosacral sympathetic trunk and inferior hypogastric plexus.

This technique can be summarized in two steps.

#### **Step 1: Sacral dissection and preservation of the SHP**

**Opening of the peritoneum:** Four anatomical landmarks were considered on the right lumbosacral

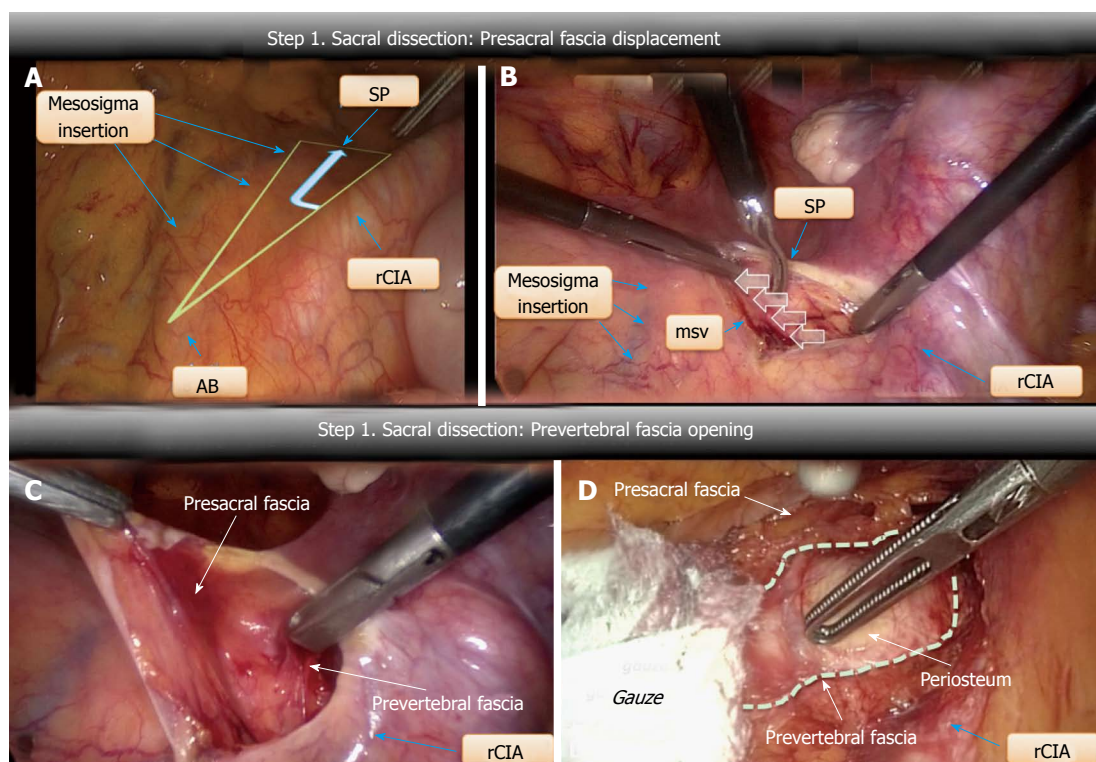
spine: The aortic bifurcation, the mesosigma insertion on the sacral promontory, the sacral promontory and the right common iliac artery. An imaginary outline of a right-angled triangle, that we called “the dissection triangle”, was drawn by the intersection of three straight lines: One lying along the aortic axis from the aortic bifurcation to the sacral promontory (longer cathetus), the other along the sacral promontory from the mesosigma insertion to the right common iliac artery (shorter cathetus) and the last one along the right common iliac artery (hypotenuse) (Figure 1A). After being raised, the peritoneum was opened medially to the right common iliac artery about 20 mm above the sacral promontory, a safe area far from the nervous and vascular structures (Figure 1B). Infact, the SHP and the rHN run close to the major cathetus of the dissection triangle, the left common iliac vein along its 30 degree angle, the iliac bifurcation along its 60 degree angle and the middle sacral vein crosses longitudinally the central area of the triangle<sup>[12]</sup> (Figure 1A).

**Presacral fascia medialization:** The peritoneal incision was extended towards the promontory (Figure 2A). The underlying presacral fascia, containing the SHP and the rHN, was incised and pushed medially to expose the longitudinal anterior vertebral ligament. No further medial dissection was attempted once the middle sacral vein had been detected (Figure 2B).

**Prevertebral fascia opening:** After a small longitudinal incision, the prevertebral fascia was opened and medially pushed with a gauze until the periosteum between the lower side of L5 and the cranial portion of L5-S1 discs was visible (Figure 2C and D). The cranial aspect of the mesh was secured by tacks at this level.

#### **Step 2: Opening of the peritoneum on the right pelvic sidewall and preservation of the rHN**

The peritoneum was opened up along the right pelvic wall; the dissection line started half way between the rHN and the ureter, then, with a lateral-medial course



**Figure 2 Step 1: Presacral fascia displacement, prevertebral fascia opening.** A: The imaginary outline of the “dissection triangle” on the right lumbosacral spine between the four anatomical landmarks; B: Presacral fascia displacement not beyond the middle sacral vein (msv); C: Presacral fascia and prevertebral fascia; D: Denuded periosteum after prevertebral fascia opening. rCIA: Right common iliac artery; SP: Sacral promontory; AB: Aortic bifurcation.

towards the uterosacral ligament insertion, it crossed the upper edge of the ligament at its proximal third. At this level, blunt, careful and superficial dissection was used to avoid iatrogenic damage of the rHN or pelvic plexus, close to the dissection line. The peritoneum was then opened up to the cervix or vaginal stump (Figure 3).

The procedure was then continued in the same manner for both groups, according to the steps recommended by the main schools<sup>[4,18]</sup> with adaptations. Our technique provided a recto and vesicovaginal dissection limited to the upper third of the vagina and subsequent fixation of two polypropylene rectangular mesh pieces to the anterior and posterior vaginal walls, using 3 interrupted stitches. Peritonization of the mesh through a continuous suture then followed.

Fisher's exact test was used to determine any statistically significant differences in the distribution of outcomes in the nerve preserving LSP and non-nerve preserving LSP groups. Any two-sided *P*-values below 5% of the conventional threshold were considered to be statistically significant. Elaborations were made using SPSS 17.0 software (SPSS Inc., Chicago, IL, United States).

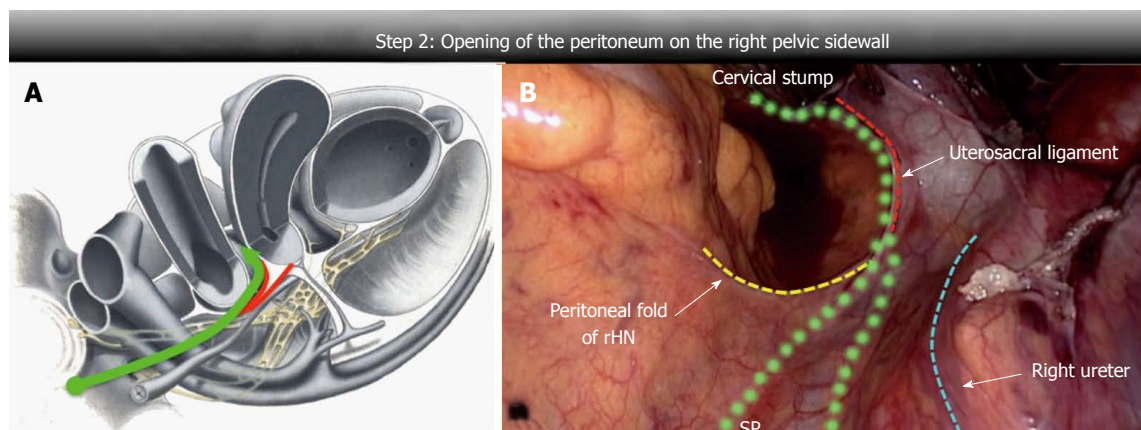
## RESULTS

A total of 43 women were evaluable for analysis and no patient required laparotomic conversion. The standard technique was used in 18 consecutive patients and our

nerve sparing technique in 25. No statistically significant differences were observed in the stage of the prolapse, or associated procedures, or personal characteristics, in the two groups under study (Table 1).

The group B follow-up followed the same time frame as the one we had previous used in the anatomoclinical study<sup>[12]</sup>. So as to make the two groups as comparable as possible, we analyzed group A at similar follow-up times as those used for group B, as this time was considered adequate enough to evidence any early post-surgical dysfunctional complications, which were the object of our study. No significant differences were observed in either group at similar follow-ups as to the symptomatic postoperative findings, anatomical outcome, late complications, prolapse and urinary related quality of life. Bowel function and related quality of life was the exception, as there were no cases of ODS in the nerve sparing LSP group, against 4 cases (4/18; 22%) in the standard LSP group ( $P = 0.02$ ), equally distributed between the two surgeons (Table 2).

The quality of life of the patients who were suffering from post LSP ODS worsened as they could not evacuate spontaneously, meaning the use of daily micro-enemas for at least 3 post-surgical months. Bowel dysfunction was clinically characterized by difficult, incomplete and painful defecation as evidenced by an increase in the quality of life and symptomatic questionnaire scores. Anorectal manometry evidenced that patients with bowel dysfunction had an objective



**Figure 3** Step 2: Opening of the peritoneum on the right pelvic sidewall. A: Schematic drawing of the dissection line (green arrow) and the autonomic pelvic nerves; B: Dissection line (dotted green line) at the cross of the caudal proximal third of the uterosacral ligament. Modified from Ceccaroni M, Fanfani F, Ercoli A, Scambia G (2006). *Innervazione viscerale e somatica della pelvi femminile*. CIC Edizioni Internazionali, Roma. rHN: Right hypogastric nerve.

basal spasticity of the anal sphincter with poor relaxation under strain, along with a slightly endorectal sensitivity reduced. There was a gradual improvement of ODS over time and, although it did not disappear altogether, the average CRADI-8 and Agachan-Wexner scores were lower at 2 years (47.5 → 14 and 13.2 → 7, respectively). Indeed, only 2/4 patients had values comparable to those of controls at the two-year follow-up. Although there were no cases of *de novo* constipation in any of the patients, all those present preoperatively persisted.

One patient in both groups required reoperation for anterior mesh detachment, whereas 1 patient in Group B had second surgery for mesh erosion, without any total reoperation rate difference. No interventional procedure was switched to the classical one.

## DISCUSSION

Bowel dysfunction after LSP has been poorly investigated and when it has been reported it has been defined in different ways, such as constipation, ODS and dyschezia. Moreover, it has often been evaluated with the use of non-validated questionnaires, without preoperative data and sometimes even in the presence of concomitant confounding procedures. We reviewed the current literature on LSP, pooling studies that accurately reported functional outcomes, procedural steps, associated procedures, mesh types and placement, in order to accurately quantify this issue (Table 3).

Although SUI *de novo* was invariably reported to have similar rates in all studies, the rate of bowel dysfunction varied greatly (SUI range: 0%-23.7%/ODS range: 0%-65.7%). This surprising variability cannot be explained by the associated procedures alone. In fact, though the post LSP bowel dysfunction rate correlates with the positioning of the single posterior mesh<sup>[33]</sup> and rises after deep posterior dissection, this variability is also found in homogeneous studies with the same associated procedures, *e.g.*, levator ani mesh anchorage (Table 3).

On the other hand, although studies without confounding associated procedures, like our case series, have a lower incidence of dysfunction, it does not reach zero<sup>[5]</sup>. This might indicate that other pathologic conditions influence bowel functions and that this complication, unlike urinary dysfunction, cannot be attributed solely to the anatomic postoperative aspects. Therefore, the hypothesis of iatrogenic denervation might well provide an explanation for this variability and justify the postoperative bowel dysfunction rate, which would otherwise be unexplainable.

Group B was the same target population as our previous anatomoclinical study<sup>[12]</sup>, where a correlation between an iatrogenic nerve lesion during dissection of the sacral promontory and bowel postoperative dysfunction was demonstrated, with the identification of the involved nerves in the caudal part of the SHP. An objective gynecological and proctological clinical evaluation excluded any secondary functional and organic underlying causes of ODS. As our technique involves anchorage to the upper third of the vaginal stump, post LSP bowel dysfunction could not be attributed to the depth of posterior mesh placement in our series. Furthermore, bowel dysfunction was found both after sacrocervicopexy (3 patients) and sacrocolpopexy (1 patient) without any significant difference.

To date, the rates of iatrogenic pelvic nerve damage after surgery for pelvic prolapse have not yet been quantified, therefore, it is most likely that they have been widely underestimated. Possover analyzed 93 patients who had referred to his centre complaining of symptoms related to probable pelvic nerve damage secondary to surgery for pelvic prolapse<sup>[34]</sup>. The most frequently observed injury was damage to the sacral nerve roots secondary to laparoscopic rectopexy. He used the term "primary nerve injuries" to describe any nerve lesions caused by coagulation, suturing, ischemia or cutting. Whilst the term "secondary nerve entrapments" was used for lesions caused by fibrotic



**Table 1** Demographic and personal characteristics, pre-operative findings, prolapse stage and associated procedures in Group A and B patients

No. of patients	Group A 25	Group B 18	P
Demographic and personal details, mean (SD)			
Mean age	55.8 (± 10.2)	56.1 (± 8.6)	0.9
Parity	2 (± 0.9)	1.5 (± 0.6)	0.14
BMI	25.2 (± 4.7)	23.9 (± 2.7)	0.41
Symptomatic preoperative findings			
Vaginal bulge, n (%)	25 (100)	18 (100)	> 0.99
Stress urinary incontinence, n (%)	4 (16)	2 (11.1)	> 0.99
ODS, n (%)	0	0	> 0.99
Constipation, n (%)	3 (12)	3 (16.6)	0.68
POPDI-6 (PFDI) <sup>a</sup> , mean (SD)	53.9 (± 13.8)	51.6 (± 1.5)	0.52
UDI-6 (PFDI) <sup>b</sup> , mean (SD)	12.3 (± 19.4)	21.2 (± 2.4)	0.21
CRADI-8 (PFDI) <sup>c</sup> , mean (SD)	9.0 (± 12.2)	11.1 (± 1.2)	0.58
Agachan-Wexner score <sup>d</sup> , mean (SD)	3.9 (± 4.2)	6.4 (± 9.1)	0.08
PISQ-12 <sup>e</sup> , mean (SD)	10.1 (± 3.9)	9.11 (± 3.8)	0.38
POP-Q stage at baseline, n (%)			
Utero-vaginal prolapse	13 (52)	14 (77.8)	0.11
Vaginal cuff prolapse	6 (24)	4 (28.6)	> 0.99
Anterior stage 2	12 (48)	8 (44.4)	> 0.99
Anterior stage 3	5 (20)	7 (38.8)	0.3
Anterior stage 4	0	0	> 0.99
Apical stage 2	12 (48)	7 (38.8)	0.75
Apical stage 3	10 (40)	9 (50)	0.54
Apical stage 4	3 (12)	2 (11.1)	> 0.99
Posterior stage 2	3 (12)	5 (27.7)	0.24
Posterior stage 3	2 (8)	0	0.5
Posterior stage 4	0	0	> 0.99
Intraoperative data			
Concomitant subtotal hysterectomy, n (%)	13 (52)	13 (72.2)	0.21
Concomitant total hysterectomy, n (%)	0	1 (5.5)	0.41
Concomitant sub-urethral sling placement, n (%)	4 (16)	2 (11.1)	> 0.99
Cervical stump fixation, n (%)	13 (52)	13 (72.2)	0.21
Vaginal cuff fixation, n (%)	6 (24)	5 (27.8)	> 0.99
Uterine preservation, n (%)	6 (24)	0	0.03
Operating time (min), mean (SD)	132 (± 27)	141 (± 21)	0.11
Hb decrease (g/dL), mean (SD)	1.1 (± 0.6)	1.2 (± 0.5)	0.48
Hospital stay, mean (SD)	2.2 (± 1.1)	2.9 (± 1.1)	0.06

<sup>a</sup>Pelvic Organ Prolapse Distress Inventory-6 scores ranges from 0 to 100 with lower scores indicating a better quality of life; <sup>b</sup>Urinary Distress Inventory-6 scores ranges from 0 to 30 with lower scores indicating a better quality of life; <sup>c</sup>Colo-rectal-anal Distress Inventory-8 scores range from 0-48, with a higher score indicating a better sexual function; <sup>d</sup>The Agachan-Wexner score ranges from 0 to 30 with the lower scores indicating a lower bowel dysfunction; <sup>e</sup>The PISQ-12 score ranges from 0-48 with a higher score indicating a more satisfactory sexual function. SD: Standard deviation; Hb: Hemoglobin.

tissue or vascular compression. Nerve injury after LSP may be associated with both kinds of nerve damage. The ODS observed in Group B onset soon after surgery and gradually improved over time, even if it did persist in 2/4 patients. Early onset is typical of a primary nerve injury, whilst the presence of a temporary functional deficit, that partially resolves in variable time lapses, is a common finding in partial nerve damage. The basal internal anal sphincter tone is under the modulation of the sympathetic autonomic system<sup>[35]</sup>. Conversely, the parasympathetic nervous system is responsible for internal anal sphincter relaxation<sup>[36]</sup>. Mechanoreceptors

**Table 2** Symptomatic postoperative findings, anatomical results and late complications in Group A and B patients

No. of patients	Group A 25	Group B 18	P
Follow-up, mo (SD)	19.5 (± 8.4)	17.3 (± 9.8)	0.33
Symptomatic post-operative findings			
Persistent vaginal bulge, n (%)	2 (8)	1 (5.5)	> 0.99
<i>De novo</i> stress urinary incontinence, n (%)	0	3 (16.6)	0.07
<i>De novo</i> ODS, n (%)	0	4 (22.2)	0.021
<i>De novo</i> constipation, n (%)	0	0	> 0.99
POPDI-6 (PFDI) <sup>a</sup> , mean (SD)	4 (± 11.6)	6.8 (± 1.5)	0.5
UDI-6 (PFDI) <sup>b</sup> , mean (SD)	3.2 (± 5.4)	7.1 (± 1.0)	0.11
CRADI-8 (PFDI) <sup>c</sup> , mean (SD)	8.3 (± 12.2)	16.9 (± 21.6)	0.1
Agachan-Wexner score <sup>d</sup> , mean (SD)	3.0 (± 3.0)	6.8 (± 5.2)	0.00
PISQ-12 <sup>e</sup> , mean (SD)	7.6 (3.3)	5.7 (± 2.9)	0.06
Anatomical results, n (%)			
Recurrence of vault prolapse	0	1 (5.5)	0.41
Cystocele recurrence/ <i>de novo</i>	1 (4)	1 (5.5)	> 0.99
Rectocele recurrence/ <i>de novo</i>	0	0	> 0.99
Late complications, n (%)			
Erosion	0	1 (5.5)	0.41
Reintervention <sup>f</sup>	1 (4)	2 (11.1)	0.56

<sup>a</sup>Pelvic Organ Prolapse Distress Inventory-6 scores ranged from 0 to 100 with lower scores indicating a better quality of life; <sup>b</sup>Urinary Distress Inventory-6 scores ranged from 0 to 30 with the lower scores indicating a better quality of life; <sup>c</sup>Colo-rectal-anal Distress Inventory-8 scores ranged from 0-48, with a higher score indicating a better sexual function; <sup>d</sup>The Agachan-Wexner score ranges from 0 to 30 with the lower scores indicating a lower bowel dysfunction; <sup>e</sup>The PISQ-12 score ranges from 0-48 with a higher score indicating a more satisfactory sexual function; <sup>f</sup>Anterior recurrence and mesh erosion; <sup>†</sup>Statistically significant. SD: Standard deviation.

transmit signals *via* the SHP promoting sphincter constriction until distention signaling overcomes the sympathetic tonic firing and defecation occurs. Extrinsic compression or lesions to only a few nerve fibres most commonly induces irritative symptoms that are connected to either a hypersensitivity or hyperactivity of the pelvic visceral organs, which accounts for the anal sphincter hypertonia we observed.

Some kind of underlying neurological cause for the bowel complications observed after LSP has been invoked, but without further elaboration. However, Shiozawa *et al.*<sup>[37]</sup>'s 2010 study was in agreement with ours and suggested that dysfunctional consequences post laparotomic sacropexy were due to lesions of the autonomic fibers, advocating their preservation. In their recently published overview on surgery involving the presacral space, Huber *et al.*<sup>[38]</sup> included sacropexy amongst the procedures at risk of postoperative bladder and bowel dysfunctions due to iatrogenic nerve injury.

Three *de novo* SUI were observed in Group B and 2/3 of these patients had ODS and negative pre-surgical urodynamic testing. Undoubtedly, the preservation of autonomic fibres is able to prevent the onset of urinary dysfunctions<sup>[39]</sup>. However, on the basis of the data obtained in our study, we cannot definitely conclude that there are no other underlying causes of the SUI observed in the ODS patients. Likewise, the data obtained from

**Table 3** Laparoscopic sacropexy functional outcomes, associated procedures, mesh type and placement: Literature review

Ref.	N° pz	FU (mo)	Bowel dysfunction (n)	Bowel dysfunction (%)	SUI (n)	SUI (%)	Associated procedures									Mesh characteristics			
							SLH	TLH	Uterus pres.	TOT/TVT	Burch	PVR	ACR	PCR	LM	Type	N°	Anterior placement	Posterior placement
[5]	77	11.4	0	0	0	0	60	0	10	0	74	0	0	0	55	Polyest.	2	Vagina	Vagina
[19]	41	24	1 (ODS)	2.4	1	2.4	0	0		13	15	0	0	0	0	Polyest.	2	Below the trigone	Perineal body
[20]	71	27.5	48 (C)	65.7	0	0	13	0		55	24	0	0	0	0	Polyest.	1 or 2	Vagina	Levator ani
[21]	325	14.6	20 (C)	6	19	5.8	0	15		163	0	0	0	0	0	Polyest.	2	Vagina	Levator ani
[18]	43	60	2 (ODS)	4.6	1	2.3	0	0		0	46	28	0	19	0	Polyprop.	2	Vagina	Perineal body/vagina
[22]	101	12	18 (C)	17.8	24	23.7	55	0		30	0	0	0	0	0	Polyprop.	2	Below the trigone	Levator ani
[23]	83	21	19 (C)	22.8	4	4.8	12	29		38	0	0	0	0	0	Polyprop.	2	Vagina	Levator ani
[24]	138	43	26 (C;ODS)	13.4 (C) 5.8 (ODS)	7	5	0	0		0	63	63	24	77	0	Polyest.	2	Vagina	Levator ani/vagina
[25]	47	33.5	8 (C)	17	6	12.7	/	0		/	0	0	0	0	0	Xenograft	2	Vagina	Levator ani
[26]	132	12.5	5 (C)	3.7	8	6	12	0		5	0	0	0	0	0	Polyprop.	2	Vagina	Levator ani
[27]	84	30.7	23 (C;ODS)	15.4 (C) 11.9 (ODS)	18	21.4	9	83	9	13	0	0	0	0	0	Polyest.	2	Vagina	Levator ani
[28]	176	60	47 (C)	26.3	7	3.9	0	13		100	25	0	0	0	0	polyprop.	2	Vagina (before the trigone)	Levator ani
[29]	116	34	2 (C;D)	1.7 (C) 0 (D)	6	5.1	56	0		28	1	0	0	0	0	Polyest.	2	Vagina	Levator ani
[30]	501	20.7	28 (C)	5.5	18	3.5	nr	nr		nr	0	0	0	0	0	Polyest./polyprop.	2	Vagina (before the trigone)	Levator ani
[31]	80	12	13 (ODS)	16.2	10	12.5	47	0		37	0	0	0	0	0	Polyest.	2	Vagina (3° superior)	Levator ani
[32]	150	2	8 (C;ODS)	3.3 (C) 2 (ODS)	10	6.6	26	0		35	0	0	0	0	0	Polyest./polyprop.	1 or 2	nr	Levator ani
	2165 (total)	26.5 (mean)	268 (total)	12.3 (mean)	139 (total)	6.4 (mean)													

ACR: Anterior colporrhaphy; C: Constipation; D: Dischezia; FU: Follow up; LM: Levator miorrhaphy; nr: Not reported; PCR: Posterior colporrhaphy; PVR: Paravaginal repair; SLH: Subtotal laparoscopic hysterectomy; TLH: Total laparoscopic hysterectomy; TOT/TVT: Transobturator tape/tension-free vaginal tape; Uterus pres.: Uterus preservation.

our review did not show a linear relationship between the urinary and bowel dysfunction (Pearl index -0.04) (Table 3). Furthermore, the dysfunctional patients reported a slight worsening in their sexuality, even if this was not statistically significant.

We are well aware that this study does have limitations, *i.e.*, its retrospective design and the relatively small sample size. However, the comparable follow-up period and population sample, the absence of concomitant surgical procedures and the administration of validated questionnaires, allowed us to mitigate confounders and make an adequate assessment of the dysfunctional symptoms.

The nerve preserving technique we developed has shown to be both effective and safe. Moreover, it took no longer than did the standard technique to perform and there were no major intraoperative complications.

The curve of nerve preserving procedure time demonstrated no specific learning effect.

Furthermore, we are of the opinion that our technique should be studied in a systematic fashion and cannot be generalized due to the heterogeneity in the suspension techniques and anchoring sites used by other authors. However, our personal experience and the data we have obtained, lead us to conclude that a midline, medial dissection, over the sacral promontory, close to the mesosigma insertion, is to be avoided and that the location of neural pathways must be borne in mind throughout the steps involved in this urogynecological procedure.

## ACKNOWLEDGMENTS

The authors would like to thank Barbara Wade for her

linguistic advice.

## COMMENTS

### Background

The authors recently carried out an anatomoclinical study on the laparoscopic sacropexy (LSP) which demonstrated the correlation between the iatrogenic lesion of the autonomic nerves during sacral promontory dissection and postoperative obstructed defecation syndrome (ODS), identifying the fibers involved in the caudal part of the superior hypogastric plexus (SHP). The aim of this current observational study was to evaluate the efficacy and safety of a modified sacral dissection technique that the authors later adopted and called "nerve preserving".

### Research frontiers

Results from this study may encourage surgeons to develop and systematically adopt pelvic nerve sparing techniques also for other kinds of benign reconstructive surgery with the aim of improving the patients' quality of life. Although nerve preserving technique does seem to be effective, the interesting data the authors obtained, require further confirmatory study and research.

### Innovations and breakthroughs

Patient quality of life is the goal of every surgical procedure which approaches a benign pathology. However there is a risk of invalidating the good results due to the iatrogenic morbidity that follows many surgical procedures. The nervous origin of the bowel complications after LSP has sometimes been invoked, but without any further elaboration. "Borrowing" a concept from oncological surgery, the authors developed and applied a nerve sparing technique in this benign pathology. To the best of our knowledge, to date, there are no published data on the clinical outcomes of a nerve preserving technique in a benign gynaecological procedure.

### Applications

The research attempted to reduce the relevant iatrogenic morbidity of a procedure considered the "anatomical gold standard" in the correction of the central segment prolapse. This retrospective study supports the hypothesis that a nerve preserving technique produces better clinical outcomes. The results from future randomized controlled trials could well provide a higher level of evidence as to the potential benefits of this procedure.

### Terminology

In this study, "nerve preserving" technique during LSP referred to a surgical procedure that aims at sparing the autonomic component of the female pelvis, specifically the orthosympathetic fibers of the SHP and the right hypogastric nerve.

### Peer-review

It is a well written manuscript concerning the outcome of nerve preserving procedure in laparoscopic sacropexy focusing on the outcome of bowel function. It is very helpful for the readers.

## REFERENCES

- 1 **Arthur HG**, Savage D. Uterine prolapse and prolapse of the vaginal vault treated by sacral hysteropexy. *J Obstet Gynaecol Br Emp* 1957; **64**: 355-360 [PMID: 13449656 DOI: 10.1111/j.1471-0528.1957.tb02652.x]
- 2 **Lane FE**. Repair of posthysterectomy vaginal-vault prolapse. *Obstet Gynecol* 1962; **20**: 72-77 [PMID: 14462011]
- 3 **Dorsey JH**, Sharp HT. Laparoscopic sacral colpopexy and other procedures for prolapse. *Baillieres Clin Obstet Gynaecol* 1995; **9**: 749-756 [PMID: 8821252 DOI: 10.1016/S0950-3552(05)80396-7]
- 4 **Wattiez A**, Canis M, Mage G, Pouly JL, Bruhat MA. Promontofixation for the treatment of prolapse. *Urol Clin North Am* 2001; **28**: 151-157 [PMID: 11277060]
- 5 **Cosson M**, Rajabally R, Bogaert E, Querleu D, Crépin G. Laparoscopic sacrocolpopexy, hysterectomy, and burch colposuspension: feasibility and short-term complications of 77 procedures. *JSLs* 2002; **6**: 115-119 [PMID: 12113413]
- 6 **Drent D**. Laparoscopic sacrocolpopexy for vaginal vault prolapse: personal experience. *N Z Med J* 2001; **114**: 505 [PMID: 11797886]
- 7 **Freeman RM**, Pantazis K, Thomson A, Frappell J, Bombieri L, Moran P, Slack M, Scott P, Waterfield M. A randomised controlled trial of abdominal versus laparoscopic sacrocolpopexy for the treatment of post-hysterectomy vaginal vault prolapse: LAS study. *Int Urogynecol J* 2013; **24**: 377-384 [PMID: 22864764 DOI: 10.1007/s00192-012-1885-x]
- 8 **Maher CF**, Feiner B, DeCuyper EM, Nichlos CJ, Hickey KV, O'Rourke P. Laparoscopic sacral colpopexy versus total vaginal mesh for vaginal vault prolapse: a randomized trial. *Am J Obstet Gynecol* 2011; **204**: 360.e1-360.e7 [PMID: 21306698 DOI: 10.1016/j.ajog.2010.11.016]
- 9 **Higgs PJ**, Chua HL, Smith AR. Long term review of laparoscopic sacrocolpopexy. *BJOG* 2005; **112**: 1134-1138 [PMID: 16045530 DOI: 10.1111/j.1471-0528.2005.00646.x]
- 10 **Nygaard IE**, McCreery R, Brubaker L, Connolly A, Cundiff G, Weber AM, Zyczynski H. Abdominal sacrocolpopexy: a comprehensive review. *Obstet Gynecol* 2004; **104**: 805-823 [PMID: 15458906 DOI: 10.1097/01.AOG.0000139514.90897.07]
- 11 **Brubaker L**, Cundiff GW, Fine P, Nygaard I, Richter HE, Visco AG, Zyczynski H, Brown MB, Weber AM. Abdominal sacrocolpopexy with Burch colposuspension to reduce urinary stress incontinence. *N Engl J Med* 2006; **354**: 1557-1566 [PMID: 16611949 DOI: 10.1056/NEJMoa054208]
- 12 **Cosma S**, Menato G, Ceccaroni M, Marchino GL, Petruzzelli P, Volpi E, Benedetto C. Laparoscopic sacropexy and obstructed defecation syndrome: an anatomoclinical study. *Int Urogynecol J* 2013; **24**: 1623-1630 [PMID: 23538995 DOI: 10.1007/s00192-013-2077-z]
- 13 **Bump RC**, Mattiasson A, Bø K, Brubaker LP, DeLancey JO, Klarskov P, Shull BL, Smith AR. The standardization of terminology of female pelvic organ prolapse and pelvic floor dysfunction. *Am J Obstet Gynecol* 1996; **175**: 10-17 [PMID: 8694033 DOI: 10.3109/09781439807217-113]
- 14 **Barber MD**, Walters MD, Bump RC. Short forms of two condition-specific quality-of-life questionnaires for women with pelvic floor disorders (PFDI-20 and PFIQ-7). *Am J Obstet Gynecol* 2005; **193**: 103-113 [PMID: 16021067 DOI: 10.1016/j.ajog.2004.12.025]
- 15 **Agachan F**, Chen T, Pfeifer J, Reissman P, Wexner SD. A constipation scoring system to simplify evaluation and management of constipated patients. *Dis Colon Rectum* 1996; **39**: 681-685 [PMID: 8646957 DOI: 10.1007/BF02056950]
- 16 **Rogers RG**, Coates KW, Kammerer-Doak D, Khalsa S, Qualls C. A short form of the Pelvic Organ Prolapse/Urinary Incontinence Sexual Questionnaire (PISQ-12). *Int Urogynecol J Pelvic Floor Dysfunct* 2003; **14**: 164-18; discussion 168 [PMID: 12955337 DOI: 10.1007/s00192-003-1063-2]
- 17 **Davis K**, Kumar D. Posterior pelvic floor compartment disorders. *Best Pract Res Clin Obstet Gynaecol* 2005; **19**: 941-958 [PMID: 16198148 DOI: 10.1016/j.bpobgyn.2005.08.010]
- 18 **Ross JW**, Preston M. Laparoscopic sacrocolpopexy for severe vaginal vault prolapse: five-year outcome. *J Minim Invasive Gynecol* 2005; **12**: 221-226 [PMID: 15922979 DOI: 10.1016/j.jmig.2005.03.017]
- 19 **Gadonneix P**, Ercoli A, Salet-Lizée D, Cotellet O, Bolner B, Van Den Akker M, Villet R. Laparoscopic sacrocolpopexy with two separate meshes along the anterior and posterior vaginal walls for multicompartment pelvic organ prolapse. *J Am Assoc Gynecol Laparosc* 2004; **11**: 29-35 [PMID: 15104827 DOI: 10.1016/S1074-3804(05)60006-0]
- 20 **Antiphon P**, Elard S, Benyoussef A, Fofana M, You R, Gettman M, Hoznek A, Vordos D, Chopin DK, Abbou CC. Laparoscopic promontory sacral colpopexy: is the posterior, recto-vaginal, mesh mandatory? *Eur Urol* 2004; **45**: 655-661 [PMID: 15082210 DOI: 10.1016/j.eururo.2004.01.004]
- 21 **Rozet F**, Mandron E, Arroyo C, Andrews H, Cathelineau X, Mombet A, Cathala N, Vallancien G. Laparoscopic sacral colpopexy

- approach for genito-urinary prolapse: experience with 363 cases. *Eur Urol* 2005; **47**: 230-236 [PMID: 15661419 DOI: 10.1016/j.eururo.2004.08.014]
- 22 **Sarlos D**, Brandner S, Kots L, Gyax N, Schaer G. Laparoscopic sacrocolpopexy for uterine and post-hysterectomy prolapse: anatomical results, quality of life and perioperative outcome-a prospective study with 101 cases. *Int Urogynecol J Pelvic Floor Dysfunct* 2008; **19**: 1415-1422 [PMID: 18536861 DOI: 10.1007/s00192-008-0657-0]
  - 23 **Xiromeritis P**, Marotta ML, Royer N, Kalogiannidis I, Degeest P, Devos F. Outcome of laparoscopic sacrocolpopexy with anterior and posterior mesh. *Hippokratia* 2009; **13**: 101-105 [PMID: 19561780]
  - 24 **Granese R**, Candiani M, Perino A, Romano F, Cucinella G. Laparoscopic sacrocolpopexy in the treatment of vaginal vault prolapse: 8 years experience. *Eur J Obstet Gynecol Reprod Biol* 2009; **146**: 227-231 [PMID: 19615810 DOI: 10.1016/j.ejogrb.2009.06.013]
  - 25 **Deprest J**, De Ridder D, Roovers JP, Werbrouck E, Coremans G, Claerhout F. Medium term outcome of laparoscopic sacrocolpopexy with xenografts compared to synthetic grafts. *J Urol* 2009; **182**: 2362-2368 [PMID: 19762041 DOI: 10.1016/j.juro.2009.07.043]
  - 26 **Claerhout F**, De Ridder D, Roovers JP, Rommens H, Spelzini F, Vandenbroucke V, Coremans G, Deprest J. Medium-term anatomic and functional results of laparoscopic sacrocolpopexy beyond the learning curve. *Eur Urol* 2009; **55**: 1459-1467 [PMID: 19111382 DOI: 10.1016/j.eururo.2008.12.008]
  - 27 **Bui C**, Ballester M, Chéreau E, Guillo E, Daraï E. [Functional results and quality of life of laparoscopic promontofixation in the cure of genital prolapse]. *Gynecol Obstet Fertil* 2010; **38**: 563-568 [PMID: 20864375 DOI: 10.1016/j.gyobfe.2010.06.001]
  - 28 **Sabbagh R**, Mandron E, Piussan J, Brychaert PE, Tu le M. Long-term anatomical and functional results of laparoscopic promontofixation for pelvic organ prolapse. *BJU Int* 2010; **106**: 861-866 [PMID: 20089111 DOI: 10.1111/j.1464-410X.2009.09173.x]
  - 29 **Sergeant F**, Resch B, Loisel C, Bisson V, Schaal JP, Marpeau L. Mid-term outcome of laparoscopic sacrocolpopexy with anterior and posterior polyester mesh for treatment of genito-urinary prolapse. *Eur J Obstet Gynecol Reprod Biol* 2011; **156**: 217-222 [PMID: 21353736 DOI: 10.1016/j.ejogrb.2011.01.022]
  - 30 **Bacle J**, Papatsoris AG, Bigot P, Azzouzi AR, Brychaert PE, Piussan J, Mandron E. Laparoscopic promontofixation for pelvic organ prolapse: a 10-year single center experience in a series of 501 patients. *Int J Urol* 2011; **18**: 821-826 [PMID: 21917023 DOI: 10.1111/j.1442-2042.2011.02857.x]
  - 31 **Perez T**, Crochet P, Descargues G, Tribondeau P, Soffray F, Gadonneix P, Loundou A, Baumstarck-Barrau K. Laparoscopic sacrocolpopexy for management of pelvic organ prolapse enhances quality of life at one year: a prospective observational study. *J Minim Invasive Gynecol* 2011; **18**: 747-754 [PMID: 22024261 DOI: 10.1016/j.jmig.2011.08.002]
  - 32 **Thubert T**, Naveau A, Letohic A, Villefranche V, Benifla JL, Defieux X. Outcomes and feasibility of laparoscopic sacrocolpopexy among obese versus non-obese women. *Int J Gynaecol Obstet* 2013; **120**: 49-52 [PMID: 23044008 DOI: 10.1016/j.ijgo.2012.07.020]
  - 33 **Leveau E**, Bouchot O, Lehur PA, Meurette G, Lenormand L, Marconnet L, Rigaud J. [Laparoscopic sacrocolpopexy results contingent on mesh position]. *Prog Urol* 2011; **21**: 426-431 [PMID: 21620304 DOI: 10.1016/j.purol.2010.12.003]
  - 34 **Possover M**, Lemos N. Risks, symptoms, and management of pelvic nerve damage secondary to surgery for pelvic organ prolapse: a report of 95 cases. *Int Urogynecol J* 2011; **22**: 1485-1490 [PMID: 21979388 DOI: 10.1007/s00192-011-1539-4]
  - 35 **Garrett JR**, Howard ER, Jones W. The internal anal sphincter in the cat: a study of nervous mechanisms affecting tone and reflex activity. *J Physiol* 1974; **243**: 153-166 [PMID: 4155766 DOI: 10.1113/jphysiol.1974.sp010747]
  - 36 **Matsufuji H**, Yokoyama J. Neural control of the internal anal sphincter motility. *J Smooth Muscle Res* 2003; **39**: 11-20 [PMID: 12889852 DOI: 10.1540/jsmr.39.11]
  - 37 **Shiozawa T**, Huebner M, Hirt B, Wallwiener D, Reisenauer C. Nerve-preserving sacrocolpopexy: anatomical study and surgical approach. *Eur J Obstet Gynecol Reprod Biol* 2010; **152**: 103-107 [PMID: 20542624 DOI: 10.1016/j.ejogrb.2010.05.009]
  - 38 **Huber SA**, Northington GM, Karp DR. Bowel and bladder dysfunction following surgery within the presacral space: an overview of neuroanatomy, function, and dysfunction. *Int Urogynecol J* 2015; **26**: 941-946 [PMID: 25410373 DOI: 10.1007/s00192-014-2572-x]
  - 39 **Junginger T**, Kneist W, Heintz A. Influence of identification and preservation of pelvic autonomic nerves in rectal cancer surgery on bladder dysfunction after total mesorectal excision. *Dis Colon Rectum* 2003; **46**: 621-628 [PMID: 12792438 DOI: 10.1097/01.DCR.0000059327.55102.96]

**P- Reviewer:** Hefny AF, Katsanos KH, Pan HC, Takano S

**S- Editor:** Ji FF **L- Editor:** A **E- Editor:** Wu HL







Published by **Baishideng Publishing Group Inc**  
7901 Stoneridge Drive, Suite 501, Pleasanton, CA 94588, USA  
Telephone: +1-925-223-8242  
Fax: +1-925-223-8243  
E-mail: [bpgoffice@wjgnet.com](mailto:bpgoffice@wjgnet.com)  
Help Desk: <http://www.f6publishing.com/helpdesk>  
<http://www.wjgnet.com>

