

World Journal of *Gastroenterology*

World J Gastroenterol 2017 April 21; 23(15): 2635-2818



**EDITORIAL**

- 2635 Dietary compliance in celiac disease

Freeman HJ

- 2640 Is there still a role for the hepatic locoregional treatment of metastatic neuroendocrine tumors in the era of systemic targeted therapies?

Cavalcoli F, Rausa E, Conte D, Nicolini AF, Massironi S

REVIEW

- 2651 Hepatitis B virus infection and alcohol consumption

Iida-Ueno A, Enomoto M, Tamori A, Kawada N

- 2660 Endoscopic management of pancreatic fluid collections-revisited

Nabi Z, Basha J, Reddy DN

ORIGINAL ARTICLE**Basic Study**

- 2673 Overexpression of fibrinogen-like protein 2 protects against T cell-induced colitis

Bartczak A, Zhang J, Adeyi O, Amir A, Grant D, Gorczynski R, Selzner N, Chruscinski A, Levy GA

- 2685 Changes in human hepatic metabolism in steatosis and cirrhosis

Schofield Z, Reed MAC, Newsome PN, Adams DH, Günther UL, Lalor PF

- 2696 Effect of *Lactobacillus rhamnosus* HN001 and *Bifidobacterium longum* BB536 on the healthy gut microbiota composition at phyla and species level: A preliminary study

Toscano M, De Grandi R, Stronati L, De Vecchi E, Drago L

- 2705 Effects of Hwangryunhaedok-tang on gastrointestinal motility function in mice

Kim H, Kim I, Lee MC, Kim HJ, Lee GS, Kim H, Kim BJ

- 2716 Role of $\Delta 133p53$ isoform in NF- κ B inhibitor PDTC-mediated growth inhibition of MKN45 gastric cancer cells

Zhang HM, Sang XG, Wang YZ, Cui C, Zhang L, Ji WS

Retrospective Cohort Study

- 2723 Optimal treatment for Siewert type II and III adenocarcinoma of the esophagogastric junction: A retrospective cohort study with long-term follow-up

Hosoda K, Yamashita K, Moriya H, Mieno H, Watanabe M

Retrospective Study

- 2731 Colorectal and interval cancers of the Colorectal Cancer Screening Program in the Basque Country (Spain)

Portillo I, Arana-Arri E, Idigoras I, Bilbao I, Martínez-Indart L, Bujanda L, Gutierrez-Ibarluzea I

- 2743 Performance of 18-fluoro-2-deoxyglucose positron emission tomography for esophageal cancer screening

Sekiguchi M, Terauchi T, Kakugawa Y, Shimada N, Saito Y, Matsuda T

- 2750 Association of obesity with *Helicobacter pylori* infection: A retrospective study

Xu MY, Liu L, Yuan BS, Yin J, Lu QB

- 2757 Outcomes and prognostic factors of patients with stage IB and II A pancreatic cancer according to the 8th edition American Joint Committee on Cancer criteria

Li Y, Tang CG, Zhao Y, Cao WY, Qu GF

Clinical Trials Study

- 2763 Patients with non-viral liver disease have a greater tumor burden and less curative treatment options when diagnosed with hepatocellular carcinoma

Mohsen W, Rodov M, Prakoso E, Charlton B, Bowen DG, Koorey DJ, Shackel NA, McCaughan GW, Strasser SI

- 2771 Urinary metabolomics analysis identifies key biomarkers of different stages of nonalcoholic fatty liver disease

Dong S, Zhan ZY, Cao HY, Wu C, Bian YQ, Li JY, Cheng GH, Liu P, Sun MY

Observational Study

- 2785 Age-related impairment of esophagogastric junction relaxation and bolus flow time

Cock C, Besanko LK, Burgstad CM, Thompson A, Kritas S, Heddle R, Fraser RJL, Omari TI

- 2795 Endoscopic ultrasound-guided cutting of holes and deep biopsy for diagnosis of gastric infiltrative tumors and gastrointestinal submucosal tumors using a novel vertical diathermic loop

Liu YM, Yang XJ

- 2802 Non-ALT biomarkers for markedly abnormal liver histology among Chinese persistently normal alanine aminotransferase-chronic hepatitis B patients

Cheng JL, Wang XL, Yang SG, Zhao H, Wu JJ, Li LJ

CASE REPORT

- 2811 One step minilaparotomy-assisted transmesenteric portal vein recanalization combined with transjugular intrahepatic portosystemic shunt placement: A novel surgical proposal in pediatrics

Pelizzo G, Quaretti P, Moramarco LP, Corti R, Maestri M, Iacob G, Calcaterra V

ABOUT COVER

Editorial board member of *World Journal of Gastroenterology*, Oya Yucel, PhD, Associate Professor, Pediatric Department, Baskent University, Istanbul Teaching and Medical Research Hospital, Istanbul 34662, Turkey

AIMS AND SCOPE

World Journal of Gastroenterology (*World J Gastroenterol*, *WJG*, print ISSN 1007-9327, online ISSN 2219-2840, DOI: 10.3748) is a peer-reviewed open access journal. *WJG* was established on October 1, 1995. It is published weekly on the 7th, 14th, 21st, and 28th each month. The *WJG* Editorial Board consists of 1375 experts in gastroenterology and hepatology from 68 countries.

The primary task of *WJG* is to rapidly publish high-quality original articles, reviews, and commentaries in the fields of gastroenterology, hepatology, gastrointestinal endoscopy, gastrointestinal surgery, hepatobiliary surgery, gastrointestinal oncology, gastrointestinal radiation oncology, gastrointestinal imaging, gastrointestinal interventional therapy, gastrointestinal infectious diseases, gastrointestinal pharmacology, gastrointestinal pathophysiology, gastrointestinal pathology, evidence-based medicine in gastroenterology, pancreatology, gastrointestinal laboratory medicine, gastrointestinal molecular biology, gastrointestinal immunology, gastrointestinal microbiology, gastrointestinal genetics, gastrointestinal translational medicine, gastrointestinal diagnostics, and gastrointestinal therapeutics. *WJG* is dedicated to become an influential and prestigious journal in gastroenterology and hepatology, to promote the development of above disciplines, and to improve the diagnostic and therapeutic skill and expertise of clinicians.

INDEXING/ABSTRACTING

World Journal of Gastroenterology (*WJG*) is now indexed in Current Contents[®]/Clinical Medicine, Science Citation Index Expanded (also known as SciSearch[®]), Journal Citation Reports[®], Index Medicus, MEDLINE, PubMed, PubMed Central, Digital Object Identifier, and Directory of Open Access Journals. The 2015 edition of Journal Citation Reports[®] released by Thomson Reuters (ISI) cites the 2015 impact factor for *WJG* as 2.787 (5-year impact factor: 2.848), ranking *WJG* as 38 among 78 journals in gastroenterology and hepatology (quartile in category Q2).

FLYLEAF

I-IX Editorial Board

EDITORS FOR THIS ISSUE

Responsible Assistant Editor: Xiang Li
Responsible Electronic Editor: Fen-Fen Zhang
Proofing Editor-in-Chief: Lian-Sheng Ma

Responsible Science Editor: Ze-Mao Gong
Proofing Editorial Office Director: Jin-Lei Wang

NAME OF JOURNAL
World Journal of Gastroenterology

ISSN
ISSN 1007-9327 (print)
ISSN 2219-2840 (online)

LAUNCH DATE
October 1, 1995

FREQUENCY
Weekly

EDITORS-IN-CHIEF
Damian Garcia-Olmo, MD, PhD, Doctor, Professor, Surgeon, Department of Surgery, Universidad Autonoma de Madrid; Department of General Surgery, Fundacion Jimenez Diaz University Hospital, Madrid 28040, Spain

Stephen C Strom, PhD, Professor, Department of Laboratory Medicine, Division of Pathology, Karolinska Institutet, Stockholm 141-86, Sweden

Andrzej S Tarnawski, MD, PhD, DSc (Med), Professor of Medicine, Chief Gastroenterology, VA Long Beach Health Care System, University of California, Irvine, CA, 5901 E. Seventh Str., Long Beach,

CA 90822, United States

EDITORIAL BOARD MEMBERS
All editorial board members resources online at <http://www.wjgnet.com/1007-9327/editorialboard.htm>

EDITORIAL OFFICE
Jin-Lei Wang, Director
Yuan Qi, Vice Director
Ze-Mao Gong, Vice Director
World Journal of Gastroenterology
Baishideng Publishing Group Inc
7901 Stoneridge Drive, Suite 501,
Pleasanton, CA 94588, USA
Telephone: +1-925-2238242
Fax: +1-925-2238243
E-mail: editorialoffice@wjgnet.com
Help Desk: <http://www.f6publishing.com/helpdesk>
<http://www.wjgnet.com>

PUBLISHER
Baishideng Publishing Group Inc
7901 Stoneridge Drive, Suite 501,
Pleasanton, CA 94588, USA
Telephone: +1-925-2238242
Fax: +1-925-2238243
E-mail: bpoffice@wjgnet.com
Help Desk: <http://www.f6publishing.com/helpdesk>

<http://www.wjgnet.com>

PUBLICATION DATE
April 21, 2017

COPYRIGHT
© 2017 Baishideng Publishing Group Inc. Articles published by this Open-Access journal are distributed under the terms of the Creative Commons Attribution Non-commercial License, which permits use, distribution, and reproduction in any medium, provided the original work is properly cited, the use is non commercial and is otherwise in compliance with the license.

SPECIAL STATEMENT
All articles published in journals owned by the Baishideng Publishing Group (BPG) represent the views and opinions of their authors, and not the views, opinions or policies of the BPG, except where otherwise explicitly indicated.

INSTRUCTIONS TO AUTHORS
Full instructions are available online at <http://www.wjgnet.com/bpg/gerinfo/204>

ONLINE SUBMISSION
<http://www.f6publishing.com>

Basic Study

Effects of Hwangryunhaedok-tang on gastrointestinal motility function in mice

Hyoyeon Kim, Iksung Kim, Min Cheol Lee, Hyun Jung Kim, Guem San Lee, Hyungwoo Kim, Byung Joo Kim

Hyoyeon Kim, Iksung Kim, Min Cheol Lee, Hyun Jung Kim, Byung Joo Kim, Division of Longevity and Biofunctional Medicine, Healthy Aging Korean Medical Research Center, School of Korean Medicine, Pusan National University, Yangsan 50612, South Korea

Guem San Lee, Wonkwang University College of Korean Medicine, Iksan 54538, South Korea

Hyungwoo Kim, Division of Pharmacology, School of Korean Medicine, Pusan National University, Yangsan 50612, South Korea

Author contributions: Kim H and Kim BJ designed the research; Kim H, Kim I, Lee MC, Kim HJ, Lee GS and Kim H performed the experiments; Kim H and Kim BJ analyzed the data; and Kim H and Kim BJ wrote the paper.

Supported by the National Research Foundation of Korea Grant funded by the Korean Government (MSIP), No. 2014R1A5A2009936.

Conflict-of-interest statement: The authors have no disclosures.

Open-Access: This article is an open-access article which was selected by an in-house editor and fully peer-reviewed by external reviewers. It is distributed in accordance with the Creative Commons Attribution Non Commercial (CC BY-NC 4.0) license, which permits others to distribute, remix, adapt, build upon this work non-commercially, and license their derivative works on different terms, provided the original work is properly cited and the use is non-commercial. See: <http://creativecommons.org/licenses/by-nc/4.0/>

Manuscript source: Unsolicited manuscript

Correspondence to: Byung Joo Kim, PhD, Associate Professor, Division of Longevity and Biofunctional Medicine, Healthy Aging Korean Medical Research Center, School of Korean Medicine, Pusan National University, Beomeori, Mulgeum-eup, Yangsan 50612, Gyeongsangnamdo, South Korea. vision@pusan.ac.kr
Telephone: +82-51-5108469
Fax: +82-51-5108420

Received: December 3, 2016

Peer-review started: December 6, 2016

First decision: February 9, 2017

Revised: February 22, 2017

Accepted: March 20, 2017

Article in press: March 20, 2017

Published online: April 21, 2017

Abstract

AIM

To investigate the effects of Hwangryunhaedok-tang (HHT) on gastrointestinal (GI) motility in mice.

METHODS

The effects of a boiling water extract of HHT (HHTe) on GI motility were investigated by calculating percent intestinal transit rates (ITR%) and gastric emptying (GE) values using Evans Blue and phenol red, respectively, in normal mice and in mice with experimentally induced GI motility dysfunction (GMD). In addition, the effects of the four components of HHT, that is, Gardeniae Fructus (GF), Scutellariae Radix (SR), Coptidis Rhizoma (CR), and Phellodendri Cortex (PC), on GI motility were also investigated.

RESULTS

In normal ICR mice, ITR% and GE values were significantly and dose-dependently increased by the intragastric administration of HHTe (0.1-1 g/kg). The ITR% values of GMD mice were significantly lower than those of normal mice, and these reductions were significantly and dose-dependently inhibited by HHTe (0.1-1 g/kg). Additionally, GF, CR, and PC dose-dependently increased ITR% and GE values in normal and GMD mice.

CONCLUSION

These results suggest that HHT is a novel candidate for

the development of a gastroprokinetic agent for the GI tract.

Key words: Hwangryunhaedok-tang; Gastrointestinal motility; Intestinal transit rate; Gastric emptying; Gastroprokinetic

© The Author(s) 2017. Published by Baishideng Publishing Group Inc. All rights reserved.

Core tip: Hwangryunhaedok-tang, a traditional herbal medicine, has been widely used in Korea for many years to ameliorate gastrointestinal (GI) disorders. Our data suggest that Hwangryunhaedok-tang may be a novel candidate for the development of a gastroprokinetic agent and for the treatment of GI motility dysfunction.

Kim H, Kim I, Lee MC, Kim HJ, Lee GS, Kim H, Kim BJ. Effects of Hwangryunhaedok-tang on gastrointestinal motility function in mice. *World J Gastroenterol* 2017; 23(15): 2705-2715 Available from: URL: <http://www.wjgnet.com/1007-9327/full/v23/i15/2705.htm> DOI: <http://dx.doi.org/10.3748/wjg.v23.i15.2705>

INTRODUCTION

Hwangryunhaedok-tang (HHT; Huang-Lian-Jie-Tang in Chinese or Oren-gedoku-to in Japanese) is prepared using *Coptidis Rhizoma* (*Coptis chinensis* Franch., Ranunculaceae), *Scutellariae Radix* (*Scutellaria baicalensis* Georgi, Labiatae), *Phellodendri Cortex* (*Phellodendron amurense* Rupr., Rutaceae), and *Gardeniae Fructus* (*Gardenia jasminoides* Ellis, Rubiaceae)^[1]. HHT has been used to treat various symptoms, including those of inflammatory diseases^[2,3], cardiovascular diseases^[4], diabetes mellitus^[5], liver diseases^[6], brain injury^[7] and obesity^[8]. It is also used to prevent or ameliorate gastrointestinal (GI) diseases^[9-12]. However, no study has previously addressed the effect of HHT on GI motility.

Prokinetic agents can enhance coordinated GI motility and the transit of GI tract contents^[13]. The recent importance use of cohabitation prokinetic agents has increased quality of life in patients with GI motility disorders^[14], and there is an increasing need to develop safer and more effective gastroprokinetic agents. However, despite the widespread use of HHT to treat GI disorders, little is known of its regulatory effects on GI motility. Therefore, we undertook this study to investigate the effects of HHT on the mouse GI tract *in vivo*.

MATERIALS AND METHODS

Preparation of HHT extract

HHT was purchased from I-WORLD Pharmaceuticals

Table 1 Composition of Hwangryunhaedok-tang

Herbal name	Amount (g)
Coptidis Rhizoma	0.67
Scutellariae Radix	1.00
Phellodendri Cortex	1.00
Gardeniae Fructus	1.00
Total	3.67

(Incheon, South Korea). It is composed of *Coptidis Rhizoma*, *Scutellariae Radix*, *Phellodendri Cortex*, and *Gardeniae Fructus* (Table 1). The materials were authenticated by Professor Hyungwoo Kim (Division of Pharmacology, Pusan National University, School of Korean Medicine, Yangsan, South Korea). The extract of HHT (HHTe) was prepared by boiling HHT in water for three hours. The standard adult dose of HHTe is 10-15 g (based on HHT) per day. More information about HHT can be found at the I-WORLD Pharmaceuticals Homepage (<http://i-pharm.koreasme.com>). The HHT was dissolved in distilled water at a concentration of 0.5 g/mL and stored in a refrigerator until required.

Profiling the Chemical Contents of HHTe by HPLC

Geniposide, berberine chloride, baicalin, and wogonin were purchased from Wako (Japan). HPLC-grade water and methanol were obtained from JT Baker Inc. (Phillipsburg, NJ, United States). Trifluoroacetic acid was purchased from Sigma-Aldrich (St. Louis, MO, United States). These standard compounds were accurately weighed and dissolved in methanol at 1000 µg/mL; these solutions were diluted 10-fold before injection. An Agilent 1200 (Agilent Technologies, Santa Clara, CA, United States) equipped with a quaternary pump, autosampler, column oven, and diode-array detector was used. The acquired data were processed using ChemStation software (ver.B.03.02). Chromatographic separation was performed on an XDB C₁₈ column (4.6 × 150 mm, 5 µm; Agilent, United States) at 35 °C. The mobile phase consisted of water containing 0.1% trifluoroacetic acid (A) and methanol (B). The program used was as follows: 30% (B) for 1 min, 30%-80% (B) over 1-13 min, and held at 80% B for 1 min, followed by a re-equilibration with 30% (B). The flow rate was set at 0.8 mL/min and the injection volume at 10 µL. The detection wavelengths used were 240 nm for geniposide, 260 nm for berberine chloride, and 275 nm for baicalin and wogonin. Standard compounds were detected in the chromatogram of HHTe at the following retention times: 5.2 min for geniposide, 9.1 min for berberine chloride, 10.1 min for baicalin, and 14.7 min for wogonin (Figure 1).

Ethics

Animal care and experiments were conducted in accordance with the guidelines issued by the Institutional Animal Care and Use Committee at Pusan

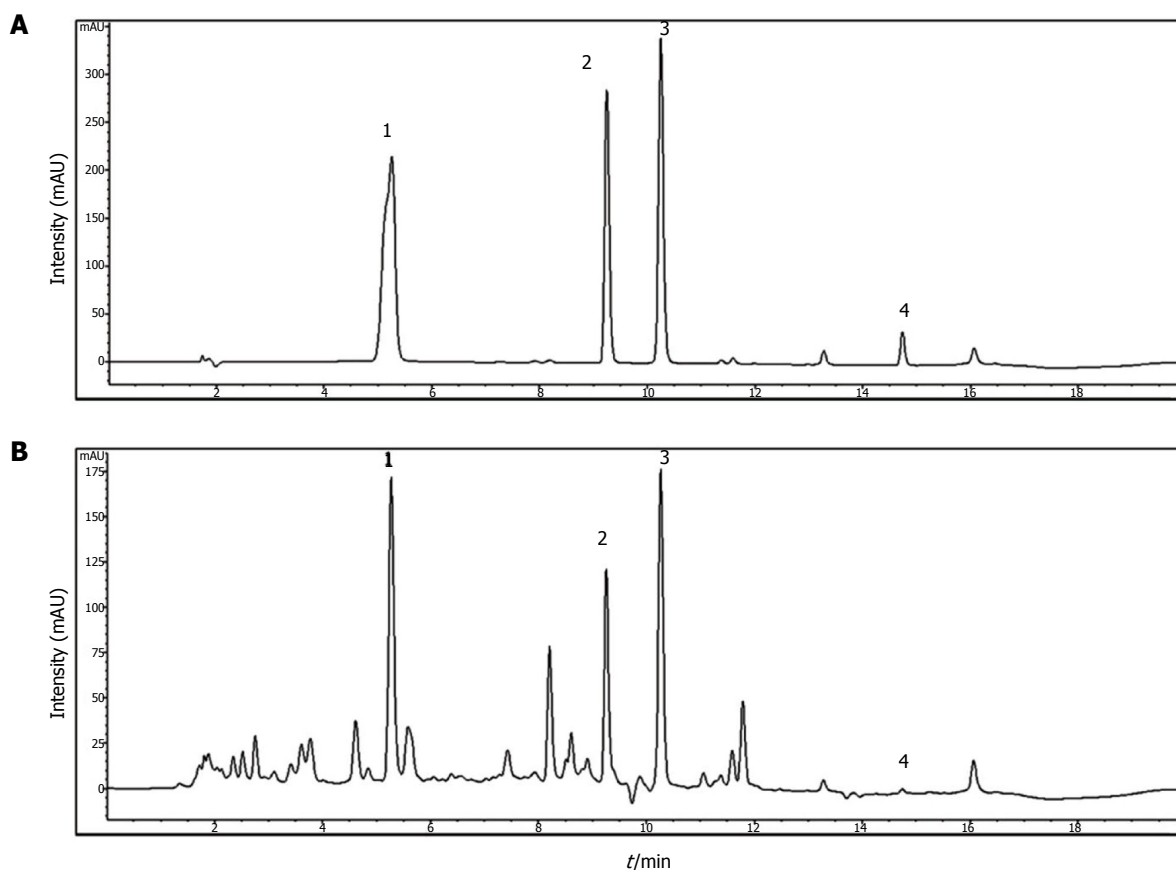


Figure 1 HPLC chromatograms of standard compounds (A) and extract of Hwangryunhaedok-tang (B) obtained at a UV wavelength of 240 nm. 1, Geniposide; 2, berberine chloride; 3, baicalin; 4, wogonin.

National University (Busan, South Korea; Approval no. PNU-2015-1036) and those issued by the National Institutes of Health Guide for the Care and Use of Laboratory Animals.

Animals

Male ICR mice (Samtako BioKorea Co., Ltd., Osan, Republic of Korea) weighing 20-25 g were used to investigate the *in vivo* effects of HHTE on GI motility. The animals were maintained under controlled conditions ($20 \pm 4^\circ\text{C}$, relative humidity $51\% \pm 5\%$, lights on 6 a.m.-6 p.m.). The animals were allowed free access to a commercial diet and tap water but were deprived of food for 24 h before the experiments. All experiments were conducted between 10 a.m. and 3 p.m.

Measurement of intestinal transit rates using Evans Blue

To determine the intestinal transit rates (ITR%) associated with HHTE *in vivo*, we used Evans Blue solution (5% w/v in distilled water (DW)). Evans Blue solution was administered (0.1 mL/kg of body weight, i.g.) through an orogastric tube 30 min after HHTE was administered i.g. to normal ICR mice. The animals were sacrificed 30 min after Evans Blue administration, and intestinal transit distances were determined by

measuring the distance the Evans Blue had migrated in the intestine (from the pylorus to its most distal point). Intestinal transit was quantified using ITR% values, which were calculated by expressing the distance traveled by Evans Blue in 30 min as a percentage of total small intestine length (from the pylorus to the ileal terminus).

Induction of GI motility dysfunction in mice

Two experimental GI motility dysfunction models, that is, an acetic acid (AA)-induced peritoneal irritation mouse model and an STZ-induced diabetic mouse model, were used. For the AA model, peritoneal irritation was induced by administering AA to ICR mice 30 min after the i.g. administration of HHTE (or DW as a vehicle control). AA (0.6% w/v in saline) was injected intraperitoneally (i.p.) at 10 mL/kg. After the injection of AA, the mice were placed in individual cages and allowed to recover for 30 min. For the STZ-induced diabetic mouse model, male ICR mice aged 4-5 wk and weighing 20-25 g were used to investigate the *in vivo* effects of HHTE on GI motility. The mice were randomly allocated to two groups: a control group and a diabetic group. To produce diabetes, the mice were fasted overnight, and on the following day, STZ (Sigma-Aldrich, St. Louis, MO, United States) solution was administered i.p. Fresh STZ solution was prepared

Table 2 Contents of four marker components of Hwangryunhaedok-tang by HPLC ($n = 4$)

Compound	Content (%)
Geniposide	2.684 ± 0.014
Berberine chloride	0.993 ± 0.006
Baicalin	5.081 ± 0.027
Wogonin	0.040 ± 0.003

in 0.1 mol/L ice-cold citrate buffer (pH 4.0) and administered at 200 mg/kg body weight^[13]. Control mice received the same volume of 0.1 mol/L citrate buffer i.p. Two months after STZ injection, blood was withdrawn from a tail vein after an 8 h fast, and blood glucose concentrations were measured using a ONE-TOUCH Select Simple kit (Johnson & Johnson Medical Company). Diabetes was defined as a blood glucose level of > 16 mmol/L. No mortality occurred during the study period, and no mouse recovered from STZ-induced diabetes.

Evaluation of gastric emptying

GE was assessed by administering a 0.05% (w/v) phenol red solution (0.5 mL/mouse) 30 min after administering HHTe. The mice were sacrificed 20 min later, and the stomachs were immediately removed, cut into several pieces in 5 mL of 0.01 N NaOH, and homogenized. The homogenates were treated with 0.2 mL of 20% trichloroacetic acid per mL of homogenate. The mixtures were centrifuged for 10 min at 1050 g, and the supernatants (0.05 mL) so obtained were added to 0.5 N NaOH (0.2 mL). The absorbances of these mixtures were measured using a spectrometer at 560 nm. Gastric emptying (GE) (%) was calculated using $100 - (A/B) \times 100$, where A is test stomach absorbance (560 nm) and B is control stomach absorbance (560 nm) immediately after phenol red administration.

Drugs

All drugs were purchased from Sigma-Aldrich (Sigma-Aldrich, St. Louis, MO, United States). In addition, an aqueous extract of the dried immature fruit of *Poncirus trifoliata* Raf. (PF) was prepared, as previously described^[15,16], and its prokinetic activities were compared with those of HHTe. PF is one of the most popular traditional folk medicines in Korea and is obtained from the fruits of Rutaceae. Furthermore, PF has been shown to possess unique, potent prokinetic activities in normal rodents and in rodents with GI motility dysfunction (GMD)^[15].

Statistical analysis

The results are expressed as the mean ± SE. Statistical analysis was performed using Student's *t*-test or by ANOVA followed by Bonferroni's *post hoc* test, as appropriate. Statistical significance was accepted for *P*

values < 0.05.

RESULTS

Functional components of HHTe

The presence of geniposide, berberine chloride, baicalin, and wogonin in HHTe was confirmed by HPLC, and their levels were quantified using calibration curves obtained using purchased standards (Table 2 and Figure 1). Validation of the method used confirmed its reliability and stability.

Effects of HHTe on GE in normal mice

In normal mice, HHTe (0.01, 0.1 and 1 g/kg)-treated groups showed significantly higher GE (%) values than non-treated controls [GE values for HHTe at 0.01, 0.1 and 1 g/kg were 58.7% ± 1.2%, 63.4% ± 1.9% (*P* < 0.001) and 66.2% ± 0.9% (*P* < 0.001), respectively; Figure 2A]. Furthermore, its effects were dose dependent in the dosage range 0.01 to 1 g/kg, and at 1 g/kg HHTe had effects similar to those of mosapride at 5 mg/kg [67.4% ± 1.8% (*P* < 0.001)] and domperidone at 5 mg/kg [67.8% ± 1.3% (*P* < 0.001)] (Figure 2A). Next, we examined loperamide-induced and cisplatin-induced models of GE delay to determine whether HHTe could increase GE in these abnormally depressed GE models. In the loperamide-induced model of GE delay, the mean GE was lower than normal [44.2% ± 2.2% (*P* < 0.001); Figure 2B], and this decrease was inhibited by HHTe at doses from 0.01 to 1 g/kg [GE values for HHTe at 0.01, 0.1 and 1 g/kg were 44.6% ± 0.9%, 48.7% ± 1.3% (*P* < 0.001) and 54.9% ± 1.1% (*P* < 0.001), respectively; Figure 2B]. The highest efficacy was obtained at 1 g/kg HHTe, and this effect was comparable to that of 5 mg/kg mosapride [55.6% ± 1.3% (*P* < 0.001)] or 5 mg/kg domperidone [55.2% ± 1.5% (*P* < 0.001)] (Figure 2B). In addition, in the cisplatin-induced model of GE delay, decreased GE was also inhibited by HHTe (0.01, 0.1 or 1 g/kg) [GE values at HHTe 0.01, 0.1 and 1 g/kg were 42.4% ± 2.3%, 46.0 ± 1.9% (*P* < 0.05) and 51.8% ± 2.0% (*P* < 0.001), respectively; Figure 2C]. The highest efficacy was obtained at an HHTe dose of 1 g/kg, and this effect was comparable to that of 5 mg/kg mosapride [54.9% ± 1.6% (*P* < 0.001)] or 5 mg/kg domperidone [53.6% ± 0.9% (*P* < 0.001)] (Figure 2C).

Effects of Gardeniae Fructus, Scutellariae Radix, Coptidis Rhizoma and Phellodendri Cortex extracts on GE in normal mice

HHT is composed of Gardeniae Fructus (*Gardenia jasminoides* Ellis), Scutellariae Radix (*Scutellaria baicalensis* Georgi), Coptidis Rhizoma (*Coptis chinensis* Franch.), and Phellodendri Cortex (*Phellodendron amurense* Rupr.)^[1]. Therefore, we investigated the effects of these components on GE in normal mice. Gardeniae Fructus (GF) (0.1 or 1 g/kg)-treated groups

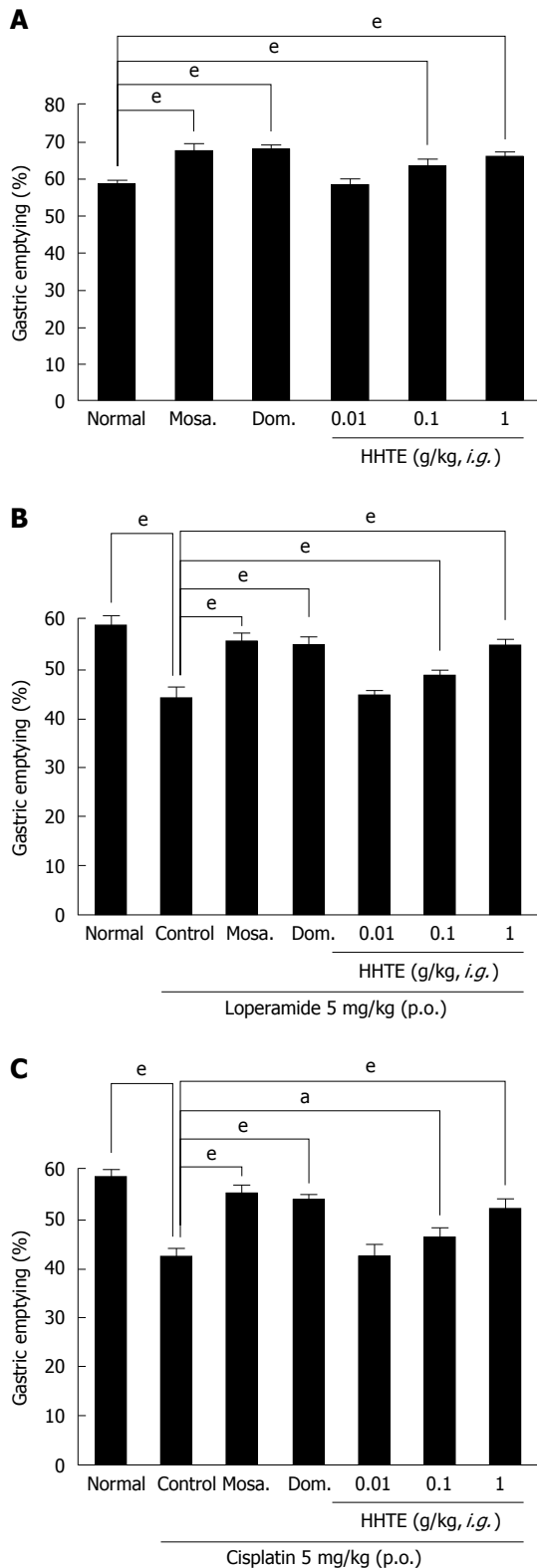


Figure 2 Increasing effect of extract of Hwangryunhaedok-tang on normal gastric emptying and on loperamide- or cisplatin- induced delayed gastric emptying. A 5-HT₄ receptor agonist (mosapride, 5 mg/kg) or a dopamine receptor antagonist (domperidone, 5 mg/kg) was administered in distilled water. A: After a 24 h fast, animals ($n = 6/\text{group}$) were orally dosed with HHTE at the indicated dosages; B: Loperamide-induced gastric emptying (GE) delay was prevented by Lizhong Tang extract; C: Lizhong Tang pretreatment prevented cisplatin-induced GE delay. GE percentages were calculated as described in Materials and Methods. Bars represent mean \pm SE. * $P < 0.05$, $^{\circ}P < 0.001$. Significantly different from normal controls. Mosa.: Mosapride; Dom.: Domperidone; p.o.: per os, oral administration; i.p.: Intraperitoneally.

showed significantly higher GE (%) values than normal controls [GE values at HHTE 0.01, 0.1 and 1 g/kg were $58.9\% \pm 1.6\%$, $63.5\% \pm 0.9\%$ ($P < 0.001$) and $66.5\% \pm 1.8\%$ ($P < 0.001$), respectively; Figure 3A], and its effects were dose dependent in the dosage range 0.01 to 1 g/kg. HHTE at 1 g/kg had effects similar to those of mosapride at 5 mg/kg [$67.1\% \pm 1.4\%$ ($P < 0.001$)] and domperidone at 5 mg/kg [$67.6\% \pm 1.5\%$ ($P < 0.001$)] (Figure 3A). However, *Scutellariae Radix* (SR) (0.01, 0.1 and 1 g/kg) had no effect on GE (%) values [GE values at HHTE 0.01, 0.1 and 1 g/kg were $58.9\% \pm 1.3\%$, $59.0\% \pm 1.4\%$ and $58.7\% \pm 0.9\%$, respectively; Figure 3B]. On the other hand, *Coptidis Rhizoma* (CR) (1 g/kg) significantly enhanced GE (%) values [GE values at HHTE 0.01, 0.1, and 1 g/kg were $58.4\% \pm 1.6\%$, $61.2\% \pm 1.3\%$ and $64.0\% \pm 0.9\%$ ($P < 0.001$), respectively; Figure 3C], and its effects were dose dependent in the dosage range 0.01 to 1 g/kg. Furthermore, CR at 1 g/kg had effects similar to those of mosapride at 5 mg/kg and domperidone at 5 mg/kg (Figure 3C). Similarly, *Phellodendri Cortex* (PC) (1 g/kg) significantly enhanced GE (%) values compared with normal controls [GE values at HHTE 0.01, 0.1, and 1 g/kg were $58.9\% \pm 1.2\%$, $60.8\% \pm 1.5\%$ and $62.9\% \pm 0.8\%$ ($P < 0.01$), respectively; Figure 3D]. Its effects were dose dependent in the dosage range 0.01 to 1 g/kg, and at 1 g/kg PC had effects similar to those of mosapride at 5 mg/kg and domperidone at 5 mg/kg (Figure 3D). These results indicate that GF, CR, and PC enhanced GE in mice.

Effects of HHTE on ITR% in normal mice

The mean ITR% for Evans Blue after 30 min in normal mice was $48.4\% \pm 2.4\%$ (Figure 4A). PF (1 g/kg), which has been demonstrated to have prokinetic activity in the GI tract^[15], significantly increased ITR% [$64.4\% \pm 1.8\%$ ($P < 0.001$)]. HHTE increased ITR% dose-dependently [ITR% values at 0.01, 0.1 and 1 g/kg were $47.8\% \pm 1.9\%$, $53.2\% \pm 0.8\%$ ($P < 0.01$) and $62.2\% \pm 1.1\%$ ($P < 0.001$), respectively; Figure 4A]. Loperamide decreased ITR%, which is consistent with previous reports^[16], and HHTE inhibited this loperamide-induced ITR% decrease [ITR% for loperamide $33.8\% \pm 1.3\%$, and ITR% for loperamide with HHTE was $43.6\% \pm 2.1\%$ ($P < 0.001$); Figure 4A].

Effects of HHTE on ITR% in mice with GMD

To examine the effect of HHTE on GI motility, we used AA and STZ-induced diabetic mouse models of experimental GMD. The AA mouse model showed a significant ITR% decrease (to $32.8\% \pm 1.3\%$ vs the $48.4 \pm 2.4\%$ of normal controls; $P < 0.001$; Figure 4B). However, intragastric treatment with HHTE at 0.01, 0.1, or 1 g/kg significantly inhibited this reduction [to $34.1\% \pm 0.7\%$, $40.6\% \pm 0.9\%$ ($P < 0.001$) and $47.6\% \pm 1.1\%$ ($P < 0.001$), respectively; Figure 4B]. No abnormal clinical signs or changes in AA mice were observed after administration of HHTE. In addition, loperamide decreased ITR% in AA mice [to

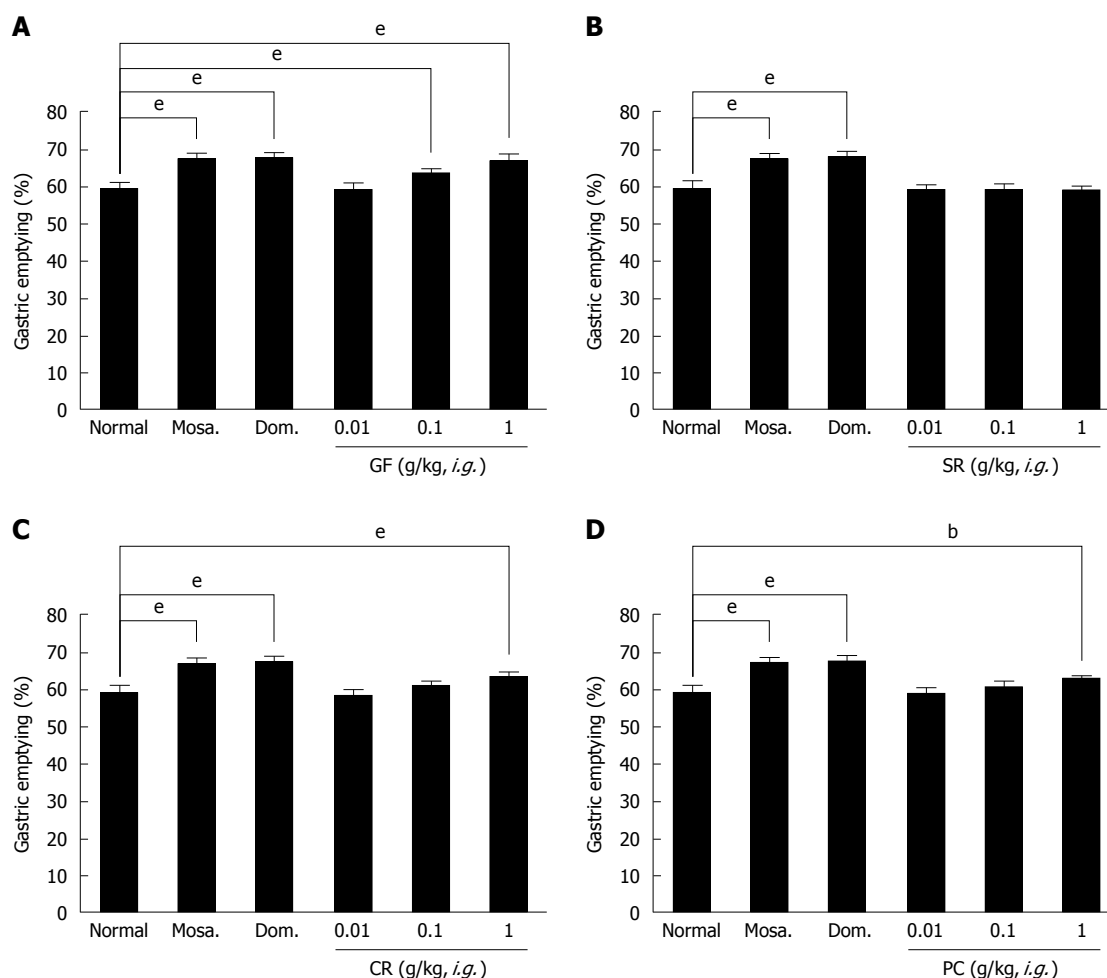


Figure 3 Effects of the four components of extract of Hwangryunhaedok-tang on gastric emptying. A: 5-HT₄ receptor agonist (mosapride, 5 mg/kg) or a dopamine receptor antagonist (domperidone, 5 mg/kg) was administered in distilled water. After a 24 h fast, animals ($n = 6$ /each group) were orally dosed with four components of HHTE, that is, A: Gardeniae Fructus (GF); B: Scutellariae Radix (SR); C: Coptidis Rhizoma (CR); or D: Phellodendri Cortex (PC), at the indicated dosages. GE percentages were calculated as described in Materials and Methods. Bars represent mean \pm SE. $^{\ast}P < 0.01$, $^{\ast\ast}P < 0.001$. Significantly different from normal controls. Mosa.: Mosapride; Dom.: Domperidone.

27.6% \pm 0.9% ($P < 0.001$), and HHTE reduced this decrease [to 35.4% \pm 0.9% ($P < 0.001$); Figure 4B]. Furthermore, STZ-induced diabetic mice also showed significant ITR% reduction (to 38.1% \pm 0.7%; Figure 4C), and this was also significantly inhibited by HHTE at 0.01, 0.1 or 1 g/kg [to 37.4% \pm 0.9%, 40.6% \pm 0.9% ($P < 0.05$) and 46.4% \pm 1.1% ($P < 0.001$), respectively; Figure 4C]. No abnormal clinical signs or changes were observed in STZ-induced diabetic mice after administration of HHTE. In addition, loperamide decreased ITR% in STZ-induced diabetic mice [to 29.2% \pm 0.8% ($P < 0.001$)], and HHTE reduced this decrease [to 39.1% \pm 0.7% ($P < 0.001$); Figure 4C]. These results indicate that HHTE increased ITR% in mice with GMD.

Effects of GF, SR, CR and PC extracts on ITR% in normal and GMD mice

GF increased ITR% dose-dependently [ITR% values at 0.01, 0.1 and 1 g/kg were 44.4% \pm 1.1%, 51.6% \pm 0.9% ($P < 0.001$) and 57.8% \pm 0.8% ($P < 0.001$),

respectively, vs the 48.4% \pm 2.4% of normal controls; (Figure 5A1)]. As mentioned above, the AA mouse model showed significant ITR% reduction [to 25.2% \pm 1.2% ($P < 0.001$ vs normal controls); (Figure 5A2)]. However, significant inhibition of this reduction was observed when GF was administered at 0.01, 0.1, or 1 g/kg intragastrically [to 25.1% \pm 1.3%, 27.3% \pm 0.7% and 36.4% \pm 0.9% ($P < 0.001$), respectively; (Figure 5A2)], but not when SR was administered at these levels (Figure 5B2). In addition, STZ-induced diabetic mice showed significant ITR% reduction (to 33.8% \pm 1.3%; Figure 5A3), and this was also significantly inhibited by GF at 0.01, 0.1 or 1 g/kg [to 34.2% \pm 0.8%, 37.2% \pm 1.5% ($P < 0.01$) and 45.8% \pm 1.0% ($P < 0.001$), respectively; (Figure 5A3)] but not by SR (0.01, 0.1 and 1 g/kg) (Figure 5B1). CR increased ITR% dose-dependently when administered to normal controls [ITR% values at 0.01, 0.1 and 1 g/kg were 44.2% \pm 0.8%, 48.6% \pm 1.1% ($P < 0.001$) and 55.2% \pm 1.6% ($P < 0.001$), respectively; (Figure 6A1)]. The AA mouse model showed significantly

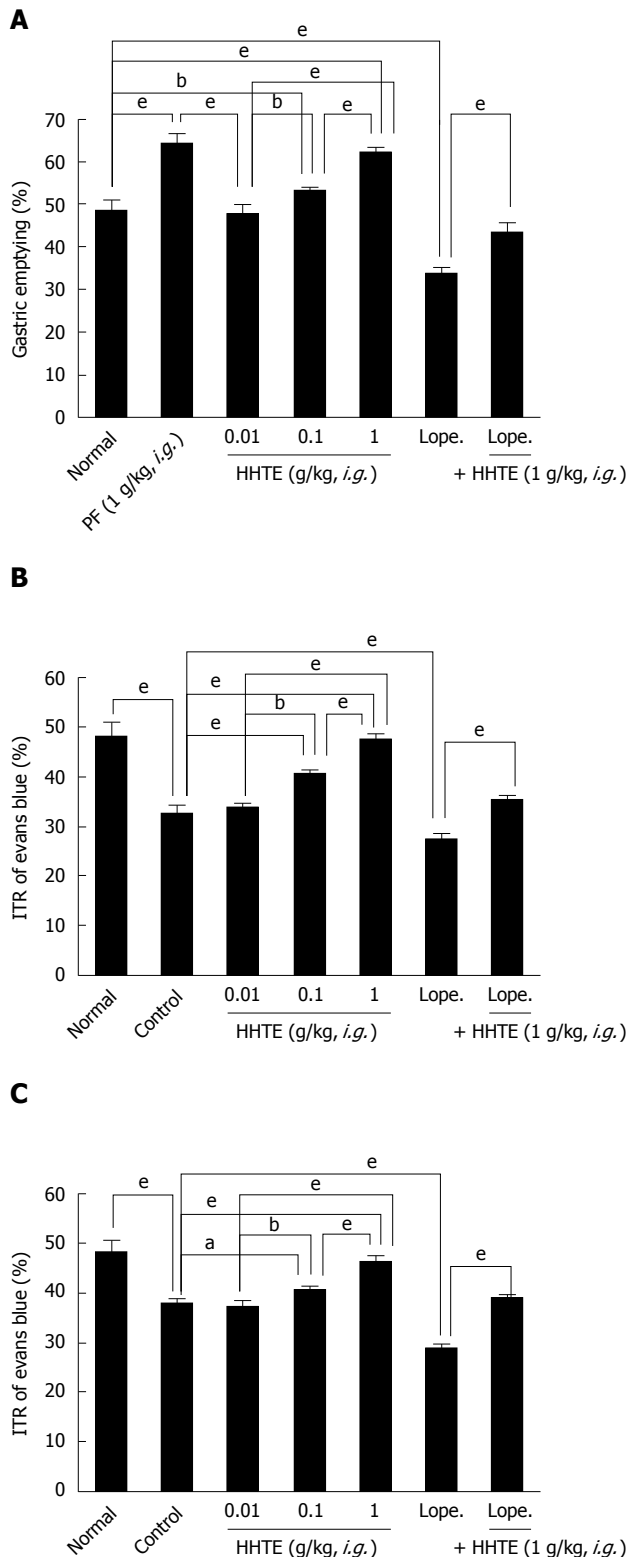


Figure 4 Effects of extract of Hwangryunhaedok-tang on percent intestinal transit rates in normal mice and in the two gastrointestinal motility disorder mouse models. **A:** ITR% values of normal mice pretreated with HHTe prior to Evans Blue administration ($n = 15$ for each bar); **B:** ITR% values of acetic acid (AA)-induced mice induced 30 min before the i.g. administration of Evans blue ($n = 9$ per bar); **C:** ITR% values of streptozotocin (STZ)-induced mice induced 2 mo before the i.g. administration of Evans Blue ($n = 9$). Bars represent mean \pm SE. $^aP < 0.05$; $^bP < 0.01$; $^cP < 0.001$. Significantly different from normal controls. PF: Poncirus trifoliata Raf; Lope.: Loperamide; GMDI: Gastrointestinal motility disorder; ITR%: Intestinal transit rates.

lower ITR% values [$25.1\% \pm 1.3\%$ ($P < 0.001$ vs normal controls); (Figure 6A2)]. However, significant inhibition of this reduction was observed when CR was administered at 0.01, 0.1, or 1 g/kg intragastrically [$25.1\% \pm 1.1\%$, $28.8\% \pm 1.2\%$ ($P < 0.001$) and $34.2\% \pm 0.8\%$ ($P < 0.001$), respectively; (Figure 6A2)]. In addition, STZ-induced diabetic mice showed significant ITR% reduction [to $34.1\% \pm 1.6\%$; (Figure 6A3)], and this was also significantly inhibited by CR at 0.01, 0.1 or 1 g/kg [$34.1\% \pm 0.9\%$, $37.1\% \pm 1.4\%$ ($P < 0.05$) and $43.2\% \pm 1.9\%$ ($P < 0.001$), respectively; (Figure 6A3)]. Furthermore, PC increased ITR% dose-dependently [ITR% values at 0.01, 0.1 and 1 g/kg were $50.1\% \pm 2.1\%$ ($P < 0.001$), $55.6\% \pm 2.3\%$ ($P < 0.001$) and $60.2\% \pm 1.8\%$ ($P < 0.001$), respectively; (Figure 6B1)]. The AA mouse model showed significant reduction in ITR% [to $24.4\% \pm 1.8\%$ ($P < 0.001$ vs normal controls); (Figure 6B2)]. However, PC at 0.01, 0.1, or 1 g/kg significantly inhibited this reduction [to $27.5\% \pm 1.5\%$, $32.6\% \pm 1.4\%$ ($P < 0.001$) and $38.8\% \pm 1.5\%$ ($P < 0.001$), respectively; (Figure 6B2)]. STZ-induced diabetic mice showed significant ITR% reduction (to $35.8\% \pm 1.3\%$; Figure 6B3) vs normal controls, and this was also significantly inhibited by PC at 0.01, 0.1 or 1 g/kg [to $38.4\% \pm 1.6\%$, $42.8\% \pm 1.4\%$ ($P < 0.001$) and $42.8\% \pm 1.5\%$ ($P < 0.001$), respectively; (Figure 6B3)]. No abnormal clinical signs or changes were observed in AA mice or STZ-induced diabetic mice after administration of GF, SR, CR, or PC. These results indicate that GF, CR, and PC increased ITR% in mice with GMD.

DISCUSSION

In this study, HHTe-treated mice had significantly greater GE values than normal mice, and HHTe at 1 g/kg was found to have effects similar to those of mosapride and domperidone (Figure 2A). Furthermore, in abnormally depressed (loperamide- and cisplatin-induced) GE models, HHTe increased GE (Figure 2B and C). Additionally, GF, CR and PC, that is, three of the four components of HHTe, also enhanced GE in mice (Figure 3). In addition, HHTe significantly and dose-dependently enhanced ITR% (Figure 4A). In experimental GMD (AA mouse and STZ-induced diabetic mouse) models, HHTe significantly inhibited GMD-induced reductions in ITR% (Figure 4B and C). Additionally, GF, CR, and PC increased ITR% in normal and GMD mice (Figures 5 and 6). Gastroprokinetic agents are considered a first-line option for treating GI motility disorders, especially delayed gastric emptying^[17]. These drugs stimulate peristalsis and may specifically improve GI motility function by influencing GI contractions and rhythms^[17,18] and include 5-hydroxytryptamine (5-HT)₄ receptor agonists (e.g., cisapride, tegaserod, and prucalopride), dopamine D2 receptor antagonists (e.g., metoclopramide and domperidone), and motilin receptor agonists such as erythromycin^[17-20]. Among the three common types of

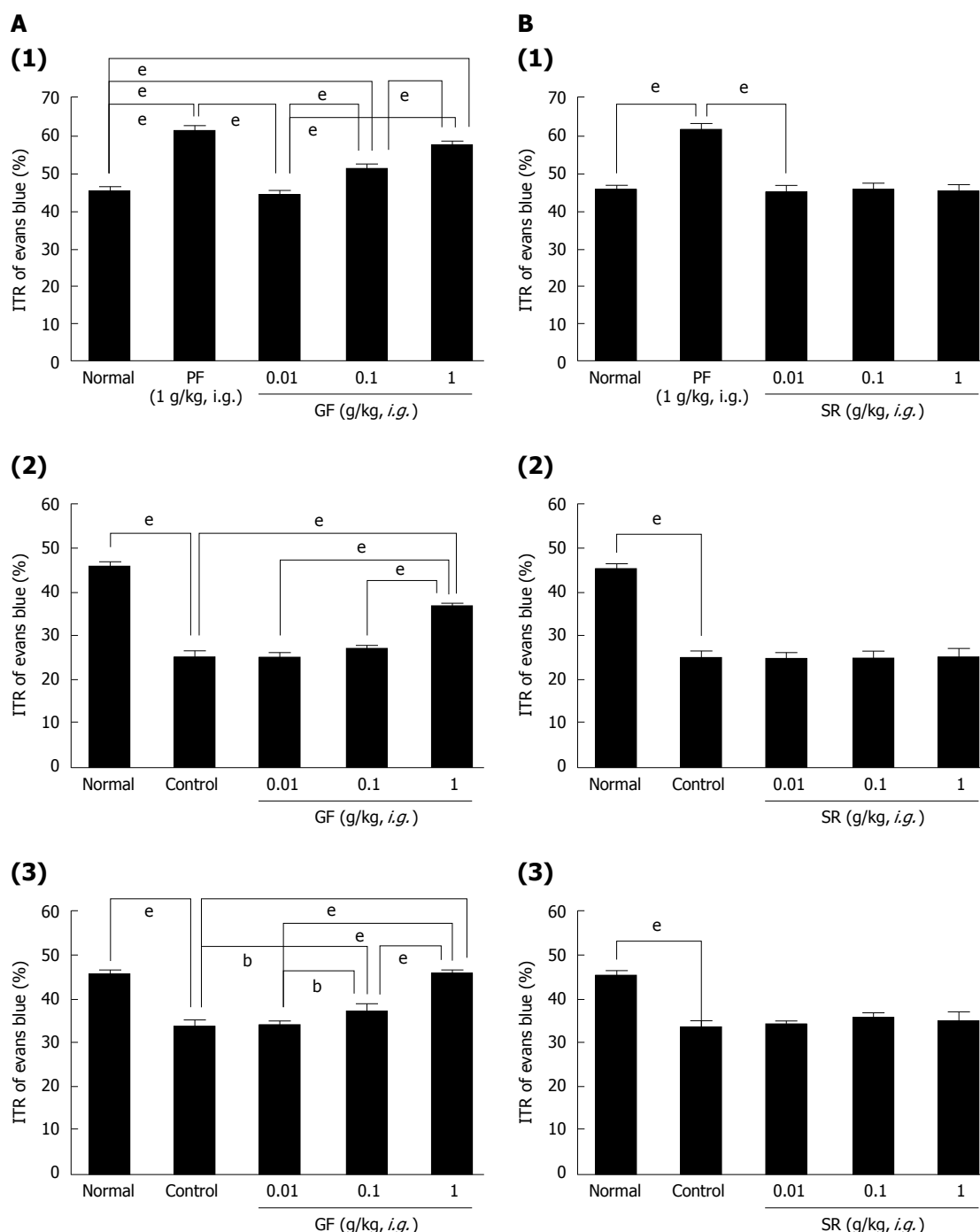


Figure 5 Effects of *Gardeniae Fructus* and *Scutellariae Radix* on percent intestinal transit rates in normal mice and in the two gastrointestinal motility disorder mouse models. A: ITR% values of (1) normal mice and (2) acetic acid (AA)-induced and (3) streptozotocin (STZ)-induced mice pretreated with GF prior to Evans Blue administration ($n = 10$ for each bar); B: ITR% values of (1) normal, (2) acetic acid (AA)-induced, and (3) streptozotocin (STZ)-induced mouse models pretreated with SR prior to Evans Blue administration ($n = 10$). Bars represent mean \pm SE. ^b $P < 0.01$, ^e $P < 0.001$. Significantly different from normal controls. PF: *Poncirus trifoliata* Raf; GF: *Gardeniae Fructus*; SR: *Scutellariae Radix*; GMDI: Gastrointestinal motility disorder; ITR%: Intestinal transit rates.

gastroprokinetic agents, 5-HT₄ receptor agonists are probably the most attractive because they effectively regulate gastrointestinal motility and sensation^[21,22]. 5-HT₄ receptor agonists stimulate motility and secretion by increasing the release of acetylcholine from excitatory motor neurons^[21,22]. In addition, they improve gastric accommodation and ameliorate impaired visceral sensation^[21,22]. However, they have been withdrawn from the market due to their side

effects on cardiac rhythmicity (related to prolongation of QT intervals)^[23].

Traditional herbal medicines are widely used for the initial treatment of GI motility disorders^[24]. However, unfortunately, clinical trials have shown that most are ineffective^[25]. Thus, new pharmacological therapeutics are needed to achieve relief from GI-related diseases and normalize GI motility^[25]. Based on the results of this study, we believe HHT might mimic the major

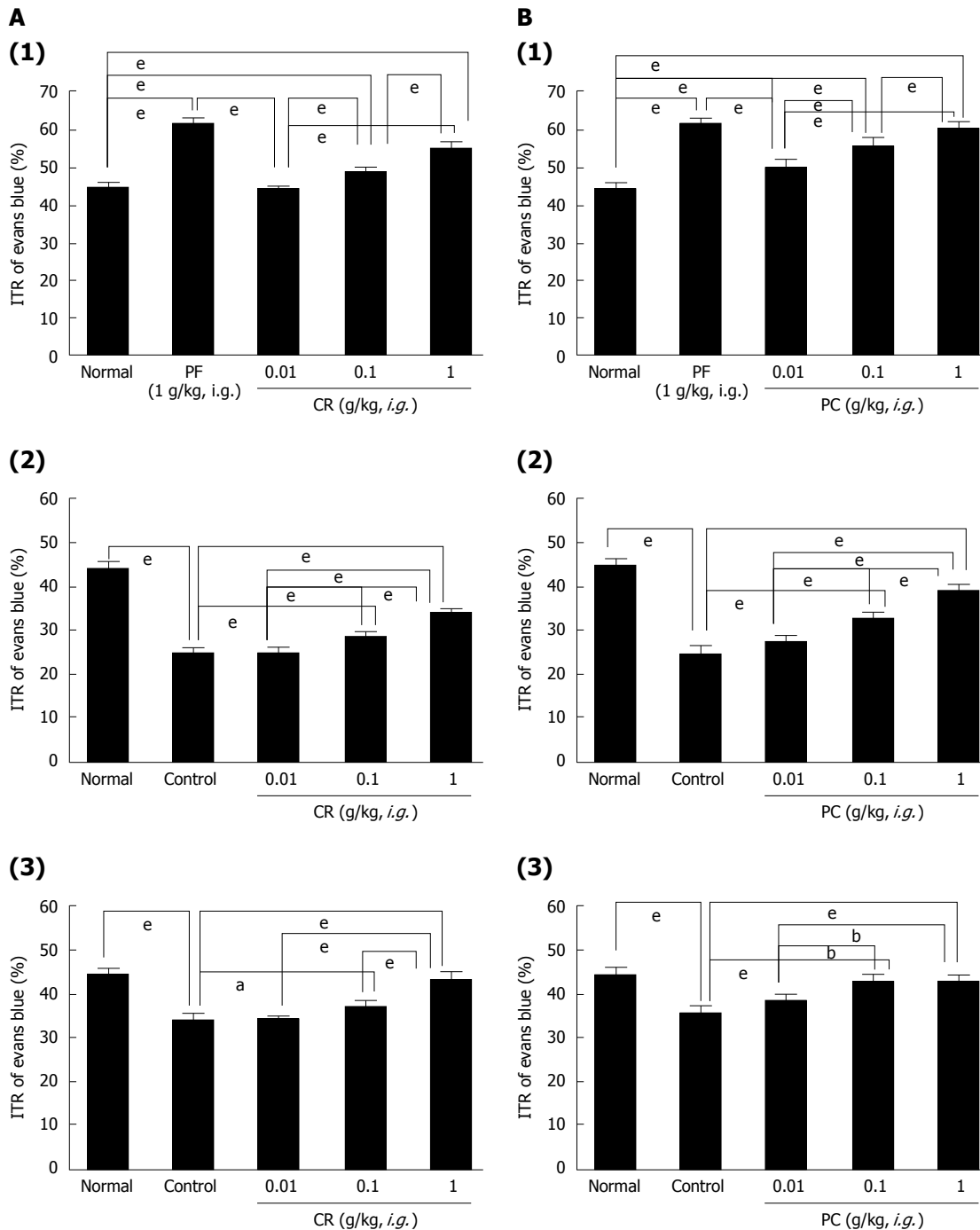


Figure 6 Effects of *Coptidis Rhizoma* and *Phellodendri Cortex* on percent intestinal transit rates in normal mice and in the gastrointestinal motility disorder mouse models. A: ITR% values of (1) normal mice and (2) acetic acid (AA)-induced and (3) streptozotocin (STZ)-induced mice pretreated with CR prior to Evans Blue administration ($n = 10$); B: ITR% values of (1) normal mice and (2) acetic acid (AA)-induced and (3) streptozotocin (STZ)-induced mouse models pretreated with PC prior to Evans Blue administration ($n = 9$ for each bar). Bars represent mean \pm SE. ^a $P < 0.05$, ^b $P < 0.01$, ^e $P < 0.001$. Significantly different from normal controls. PF: *Poncirus trifoliata* Raf; GF: *Gardeniae Fructus*; SR: *Scutellariae Radix*; GMDI: Gastrointestinal motility disorder; ITR%: Intestinal transit rates.

excitatory neurotransmitters of the GI tract and act as a gastroprokinetic agent. Additionally, herbal products offer an attractive alternative based on perceptions of "natural" origins and low risks of side effects^[26].

The interstitial cells of Cajal (ICCs) contribute to normal GI function by generating electrical slow waves and mediating neuromuscular signaling^[27,28]. Damage to ICCs or reductions in ICC numbers has been described in many GI motility disorders^[29,30], and

thus it is of considerable importance that studies be conducted to elucidate the mechanisms underlying ICC pacemaker activity.

In summary, in normal ICR mice, HHTE and three of its four components dose-dependently increased ITR% and GE values. Furthermore, the ITR% reductions in GMD models were significantly and dose dependently reduced by treatment with HHTE or its active components. In addition, HHTE prevented observed

GE delays in our loperamide- and cisplatin-induced models. Taken together, our results suggest that HHT is a good candidate starting point for the development of a gastroprokinetic agent.

COMMENTS

Background

Hwangryunhaedok-tang (HHT) [composed of *Coptidis Rhizoma* (*Coptis chinensis* Franch.), *Scutellariae Radix* (*Scutellaria baicalensis* Georgi), *Phellodendri Cortex* (*Phellodendron amurense* Rupr.), and *Gardeniae Fructus* (*Gardenia jasminoides* Ellis)] is a traditional Chinese medicinal formula, and has been widely used in East Asia for many years to ameliorate the symptoms of gastrointestinal (GI) disorders. However, despite the considerable use of HHT in tradition medicine to treat GI dysfunction, little was known of its *in vivo* regulatory effects on GI motility.

Research frontiers

HHT is a good candidate material for the development of a gastroprokinetic agent.

Innovations and breakthroughs

In normal ICR mice, HHT and three of its components dose-dependently increased ITR% and GE values. Furthermore, ITR% reductions observed in GMD models were significantly and dose-dependently inhibited by treatment with HHT or its active components. In addition, HHT prevented observed GE delays in our loperamide- and cisplatin-induced models of GE delay.

Applications

HHT should be considered a novel candidate prokinetic agent for the pharmacological treatment of GI motility disorders.

Terminology

GI motility: movements of the digestive system, and the transit of contents within it; ITR%: Rate of passage of food (sometimes in the form of a test meal) through the GI tract; Gastric emptying: the emptying of stomach contents.

Peer-review

The manuscript is well designed and suggests Hwangryunhaedok-tang may serve as a novel candidate of a gastroprokinetic agent for the treatment of GI motility dysfunction. It is excellent that both experimental GI motility dysfunction models and pharmacological methods were applied in the manuscript, which would make the data convincing.

REFERENCES

- 1 Lu T, Song J, Huang F, Deng Y, Xie L, Wang G, Liu X. Comparative pharmacokinetics of baicalin after oral administration of pure baicalin, Radix scutellariae extract and Huang-Lian-Jie-Du-Tang to rats. *J Ethnopharmacol* 2007; **110**: 412-418 [PMID: 17110066 DOI: 10.1016/j.jep.2006.09.036]
- 2 Lu J, Wang JS, Kong LY. Anti-inflammatory effects of Huang-Lian-Jie-Du decoction, its two fractions and four typical compounds. *J Ethnopharmacol* 2011; **134**: 911-918 [PMID: 21296144 DOI: 10.1016/j.jep.2011.01.049]
- 3 Yue R, Zhao L, Hu Y, Jiang P, Wang S, Xiang L, Liu W, Zhang W, Liu R. Rapid-resolution liquid chromatography TOF-MS for urine metabolomic analysis of collagen-induced arthritis in rats and its applications. *J Ethnopharmacol* 2013; **145**: 465-475 [PMID: 23183090 DOI: 10.1016/j.jep.2012.11.010]
- 4 Seo CS, Kim OS, Kim JH, Shin HK. Simultaneous quantification and antiatherosclerosis effect of the traditional Korean medicine, Hwangryunhaedok-tang. *BMC Complement Altern Med* 2015; **15**: 108 [PMID: 25880755 DOI: 10.1186/s12906-015-0632-5]
- 5 Yu YL, Lu SS, Yu S, Liu YC, Wang P, Xie L, Wang GJ, Liu XD. Huang-lian-jie-du-decoction modulates glucagon-like peptide-1 secretion in diabetic rats. *J Ethnopharmacol* 2009; **124**: 444-449 [PMID: 19497359 DOI: 10.1016/j.jep.2009.05.027]
- 6 Hsu YL, Kuo PL, Tzeng TF, Sung SC, Yen MH, Lin LT, Lin CC. Huang-lian-jie-du-tang, a traditional Chinese medicine prescription, induces cell-cycle arrest and apoptosis in human liver cancer cells in vitro and in vivo. *J Gastroenterol Hepatol* 2008; **23**: e290-e299 [PMID: 18522681 DOI: 10.1111/j.1440-1746.2008.05390.x]
- 7 Zhang Q, Ye YL, Yan YX, Zhang WP, Chu LS, Wei EQ, Yu YP. Protective effects of Huanglian-Jiedu-Tang on chronic brain injury after focal cerebral ischemia in mice. *Zhejiang Daxue Xuebao Yixueban* 2009; **38**: 75-80 [PMID: 19253432]
- 8 Yamakawa J, Ishigaki Y, Takano F, Takahashi T, Yoshida J, Moriya J, Takata T, Tatsuno T, Sasaki K, Ohta T, Takegami T, Yoshizaki F. The Kampo medicines Orengedokuto, Bofutsushosan and Boiogito have different activities to regulate gene expressions in differentiated rat white adipocytes: comprehensive analysis of genetic profiles. *Biol Pharm Bull* 2008; **31**: 2083-2089 [PMID: 18981578 DOI: 10.1248/bpb.31.2083]
- 9 Ohta Y, Kobayashi T, Nishida K, Sasaki E, Ishiguro I. Preventive effect of Oren-gedoku-to (Huanglian-Jie-Du-Tang) extract on the development of stress-induced acute gastric mucosal lesions in rats. *J Ethnopharmacol* 1999; **67**: 377-384 [PMID: 10617076 DOI: 10.1016/S0378-8741(99)00093-8]
- 10 Zhou H, Mineshita S. The effect of Oren-gedoku-to on experimental colitis in rats. *J Pharm Pharmacol* 1999; **51**: 1065-1074 [PMID: 10528991 DOI: 10.1211/0022357991773401]
- 11 Hong T, Jin G, Cyong J. Effect of components of Oren-gedoku-to (Huang-Lian-Jie-Du-Tang) on murine colitis induced by dextran sulfate sodium. *J Trad Med* 2000; **17**: 173-179
- 12 Watanabe-Fukuda Y, Yamamoto M, Miura N, Fukutake M, Ishige A, Yamaguchi R, Nagasaki M, Saito A, Imoto S, Miyano S, Takeda J, Watanabe K. Orengedokuto and berberine improve indomethacin-induced small intestinal injury via adenosine. *J Gastroenterol* 2009; **44**: 380-389 [PMID: 19319464 DOI: 10.1007/s00535-009-0005-2]
- 13 Hwang MW, Kim JN, Song HJ, Lim B, Kwon YK, Kim BJ. Effects of Lizhong Tang on cultured mouse small intestine interstitial cells of Cajal. *World J Gastroenterol* 2013; **19**: 2249-2255 [PMID: 23599652 DOI: 10.3748/wjg.v19.i14.2249]
- 14 Huizinga JD, Thuneberg L, Klüppel M, Malysz J, Mikkelsen HB, Bernstein A. W/kit gene required for interstitial cells of Cajal and for intestinal pacemaker activity. *Nature* 1995; **373**: 347-349 [PMID: 7530333 DOI: 10.1038/373347a0]
- 15 Kim BJ, Kim HW, Lee GS, Choi S, Jun JY, So I, Kim SJ. Poncirus trifoliolate fruit modulates pacemaker activity in interstitial cells of Cajal from the murine small intestine. *J Ethnopharmacol* 2013; **149**: 668-675 [PMID: 23911946 DOI: 10.1016/j.jep.2013.07.017]
- 16 Tan-No K, Nijima F, Nakagawasa O, Sato T, Satoh S, Tadano T. Development of tolerance to the inhibitory effect of loperamide on gastrointestinal transit in mice. *Eur J Pharm Sci* 2003; **20**: 357-363 [PMID: 14592702 DOI: 10.1016/j.ejps.2003.08.004]
- 17 Patrick A, Epstein O. Review article: gastroparesis. *Aliment Pharmacol Ther* 2008; **27**: 724-740 [PMID: 18248660 DOI: 10.1111/j.1365-2036.2008.03637.x]
- 18 Yin J, Xu X, Song G, Han HS, Kim HW, Chen JD. Prokinetic effects of a new 5-HT4 agonist, YKP10811, on gastric motility in dogs. *J Gastroenterol Hepatol* 2017; **32**: 625-630 [PMID: 27418395 DOI: 10.1111/jgh.13490]
- 19 Hasler WL. Gastroparesis: symptoms, evaluation, and treatment. *Gastroenterol Clin North Am* 2007; **36**: 619-647, ix [PMID: 17950441 DOI: 10.1016/j.gtc.2007.07.004]
- 20 Tack J. Prokinetics and fundic relaxants in upper functional GI disorders. *Curr Opin Pharmacol* 2008; **8**: 690-696 [PMID: 18940266 DOI: 10.1016/j.coph.2008.09.009]
- 21 Tonini M, Candura SM, Onori L, Coccini T, Manzo L, Rizzi CA. 5-hydroxytryptamine4 receptor agonists facilitate cholinergic transmission in the circular muscle of guinea pig ileum: antagonism by tropisetron and DAU 6285. *Life Sci* 1992; **50**: PL173-PL178 [PMID: 1315899 DOI: 10.1016/0024-3205(92)90453-V]

- 22 **Prins NH**, Akkermans LM, Lefebvre RA, Schuurkes JA. 5-HT(4) receptors on cholinergic nerves involved in contractility of canine and human large intestine longitudinal muscle. *Br J Pharmacol* 2000; **131**: 927-932 [PMID: 11053213 DOI: 10.1038/sj.bjp.0703615]
- 23 **Wang SH**, Lin CY, Huang TY, Wu WS, Chen CC, Tsai SH. QT interval effects of cisapride in the clinical setting. *Int J Cardiol* 2001; **80**: 179-183 [PMID: 11578711 DOI: 10.1016/s0167-5273(01)00485-5]
- 24 **Jia G**, Meng MB, Huang ZW, Qing X, Lei W, Yang XN, Liu SS, Diao JC, Hu SY, Lin BH, Zhang RM. Treatment of functional constipation with the Yun-chang capsule: a double-blind, randomized, placebo-controlled, dose-escalation trial. *J Gastroenterol Hepatol* 2010; **25**: 487-493 [PMID: 20370727 DOI: 10.1111/j.1440-1746.2009.06189.x]
- 25 **Jiang C**, Xu Q, Wen X, Sun H. Current developments in pharmacological therapeutics for chronic constipation. *Acta Pharm Sin B* 2015; **5**: 300-309 [PMID: 26579459 DOI: 10.1016/j.apsb.2015.05.006]
- 26 **Suzuki H**, Inadomi JM, Hibi T. Japanese herbal medicine in functional gastrointestinal disorders. *Neurogastroenterol Motil* 2009; **21**: 688-696 [PMID: 19563404 DOI: 10.1111/j.1365-2982.2009.01290.x]
- 27 **Koh SD**, Sanders KM, Ward SM. Spontaneous electrical rhythmicity in cultured interstitial cells of cajal from the murine small intestine. *J Physiol* 1998; **513** (Pt 1): 203-213 [PMID: 9782170 DOI: 10.1111/j.1469-7793.1998.203by.x]
- 28 **Kim BJ**, Park KJ, Kim HW, Choi S, Jun JY, Chang IY, Jeon JH, So I, Kim SJ. Identification of TRPM7 channels in human intestinal interstitial cells of Cajal. *World J Gastroenterol* 2009; **15**: 5799-5804 [PMID: 19998500 DOI: 10.3748/wjg.15.5799]
- 29 **He CL**, Burgart L, Wang L, Pemberton J, Young-Fadok T, Szurszewski J, Farrugia G. Decreased interstitial cell of cajal volume in patients with slow-transit constipation. *Gastroenterology* 2000; **118**: 14-21 [PMID: 10611149]
- 30 **Zarate N**, Mearin F, Wang XY, Hewlett B, Huizinga JD, Malagelada JR. Severe idiopathic gastroparesis due to neuronal and interstitial cells of Cajal degeneration: pathological findings and management. *Gut* 2003; **52**: 966-970 [PMID: 12801952 DOI: 10.1136/gut.52.7.966]

P- Reviewer: Liu MJ **S- Editor:** Yu J **L- Editor:** A
E- Editor: Wang CH





Published by **Baishideng Publishing Group Inc**
7901 Stoneridge Drive, Suite 501, Pleasanton, CA 94588, USA
Telephone: +1-925-223-8242
Fax: +1-925-223-8243
E-mail: bpgoffice@wjgnet.com
Help Desk: <http://www.f6publishing.com/helpdesk>
<http://www.wjgnet.com>



ISSN 1007-9327

