

World Journal of *Gastroenterology*

World J Gastroenterol 2017 May 21; 23(19): 3379-3568



**EDITORIAL**

- 3379** Follow-up after curative resection for gastric cancer: Is it time to tailor it?

Aurello P, Petrucciani N, Antolino L, Giulitti D, D'Angelo F, Ramacciato G

- 3388** Cautiously using natural medicine to treat liver problems

Xiong F, Guan YS

REVIEW

- 3396** Renin angiotensin system in liver diseases: Friend or foe?

Simões e Silva AC, Miranda AS, Rocha NP, Teixeira AL

- 3407** Relationship between adipose tissue dysfunction, vitamin D deficiency and the pathogenesis of non-alcoholic fatty liver disease

Cimini FA, Barchetta I, Carotti S, Bertocchini L, Baroni MG, Vespasiani-Gentilucci U, Cavallo MG, Morini S

- 3418** Recent advances in the management of pruritus in chronic liver diseases

Tajiri K, Shimizu Y

ORIGINAL ARTICLE**Basic Study**

- 3427** Oxidative stress-induced mitochondrial dysfunction in a normal colon epithelial cell line

Packiriswamy N, Coulson KF, Holcombe SJ, Sordillo LM

- 3440** Role of AXL in invasion and drug resistance of colon and breast cancer cells and its association with p53 alterations

Abdel-Rahman WM, Al-khayyal NA, Nair VA, Aravind SR, Saber-Ayad M

- 3449** Effects of heme oxygenase-1-modified bone marrow mesenchymal stem cells on microcirculation and energy metabolism following liver transplantation

Yang L, Shen ZY, Wang RR, Yin ML, Zheng WP, Wu B, Liu T, Song HL

- 3468** Diabetes recurrence after metabolic surgeries correlates with re-impaired insulin sensitivity rather than beta-cell function

Liu T, Zhong MW, Liu Y, Sun D, Wei M, Huang X, Cheng YG, Wu QZ, Wu D, Zhang XQ, Wang KX, Hu SY, Liu SZ

Case Control Study

- 3480 Polymorphisms of microRNA target genes *IL12B*, *INSR*, *CCND1* and *IL10* in gastric cancer
Petkevicius V, Salteniene V, Juzenas S, Wex T, Link A, Leja M, Steponaitiene R, Skieceviciene J, Kupcinskas L, Jonaitis L, Kiudelis G, Malfertheiner P, Kupcinskas J

- 3488 Insulin-like growth factor-1, IGF binding protein-3, and the risk of esophageal cancer in a nested case-control study
Adachi Y, Nojima M, Mori M, Yamashita K, Yamano H, Nakase H, Endo T, Wakai K, Sakata K, Tamakoshi A

Retrospective Cohort Study

- 3496 Tumor-associated autoantibodies are useful biomarkers in immunodiagnosis of α -fetoprotein-negative hepatocellular carcinoma
Wang T, Liu M, Zheng SJ, Bian DD, Zhang JY, Yao J, Zheng QF, Shi AM, Li WH, Li L, Chen Y, Wang JH, Duan ZP, Dong L

Observational Study

- 3505 Clinical course of ulcerative colitis patients who develop acute pancreatitis
Kim JW, Hwang SW, Park SH, Song TJ, Kim MH, Lee HS, Ye BD, Yang DH, Kim KJ, Byeon JS, Myung SJ, Yang SK
- 3513 Relationship between use of selective serotonin reuptake inhibitors and irritable bowel syndrome: A population-based cohort study
Lin WZ, Liao YJ, Peng YC, Chang CH, Lin CH, Yeh HZ, Chang CS
- 3522 Laparoscopic management of gastric gastrointestinal stromal tumors: A retrospective 10-year single-center experience
Liao GQ, Chen T, Qi XL, Hu YF, Liu H, Yu J, Li GX

Prospective Study

- 3530 Short health scale: A valid measure of health-related quality of life in Korean-speaking patients with inflammatory bowel disease
Park SK, Ko BM, Goong HJ, Seo JY, Lee SH, Baek HL, Lee MS, Park DI
- 3538 Continuing episodes of pain in recurrent acute pancreatitis: Prospective follow up on a standardised protocol with drugs and pancreatic endotherapy
Pai CG, Kamath MG, Shetty MV, Kurien A
- 3546 Nissen fundoplication vs proton pump inhibitors for laryngopharyngeal reflux based on pH-monitoring and symptom-scale
Zhang C, Hu ZW, Yan C, Wu Q, Wu JM, Du X, Liu DG, Luo T, Li F, Wang ZG

- 3556** Diagnosis of eosinophilic gastroenteritis is easily missed

Abassa KK, Lin XY, Xuan JY, Zhou HX, Guo YW

CASE REPORT

- 3565** Fecal microbiota transplantation cured epilepsy in a case with Crohn's disease: The first report

He Z, Cui BT, Zhang T, Li P, Long CY, Ji GZ, Zhang FM

ABOUT COVER

Editorial board member of *World Journal of Gastroenterology*, Somchai Amornytin, MD, Associate Professor, Department of Anesthesiology and Siriraj Gastrointestinal Endoscopy Center, Faculty of Medicine, Siriraj Hospital, Mahidol University, Bangkok 10700, Thailand

AIMS AND SCOPE

World Journal of Gastroenterology (*World J Gastroenterol*, *WJG*, print ISSN 1007-9327, online ISSN 2219-2840, DOI: 10.3748) is a peer-reviewed open access journal. *WJG* was established on October 1, 1995. It is published weekly on the 7th, 14th, 21st, and 28th each month. The *WJG* Editorial Board consists of 1375 experts in gastroenterology and hepatology from 68 countries.

The primary task of *WJG* is to rapidly publish high-quality original articles, reviews, and commentaries in the fields of gastroenterology, hepatology, gastrointestinal endoscopy, gastrointestinal surgery, hepatobiliary surgery, gastrointestinal oncology, gastrointestinal radiation oncology, gastrointestinal imaging, gastrointestinal interventional therapy, gastrointestinal infectious diseases, gastrointestinal pharmacology, gastrointestinal pathophysiology, gastrointestinal pathology, evidence-based medicine in gastroenterology, pancreatology, gastrointestinal laboratory medicine, gastrointestinal molecular biology, gastrointestinal immunology, gastrointestinal microbiology, gastrointestinal genetics, gastrointestinal translational medicine, gastrointestinal diagnostics, and gastrointestinal therapeutics. *WJG* is dedicated to become an influential and prestigious journal in gastroenterology and hepatology, to promote the development of above disciplines, and to improve the diagnostic and therapeutic skill and expertise of clinicians.

INDEXING/ABSTRACTING

World Journal of Gastroenterology (*WJG*) is now indexed in Current Contents[®]/Clinical Medicine, Science Citation Index Expanded (also known as SciSearch[®]), Journal Citation Reports[®], Index Medicus, MEDLINE, PubMed, PubMed Central, Digital Object Identifier, and Directory of Open Access Journals. The 2015 edition of Journal Citation Reports[®] released by Thomson Reuters (ISI) cites the 2015 impact factor for *WJG* as 2.787 (5-year impact factor: 2.848), ranking *WJG* as 38 among 78 journals in gastroenterology and hepatology (quartile in category Q2).

FLYLEAF

I-IX Editorial Board

EDITORS FOR THIS ISSUE

Responsible Assistant Editor: Xiang Li
Responsible Electronic Editor: Fen-Fen Zhang
Proofing Editor-in-Chief: Lian-Sheng Ma

Responsible Science Editor: Ze-Mao Gong
Proofing Editorial Office Director: Jin-Lei Wang

NAME OF JOURNAL
World Journal of Gastroenterology

ISSN
ISSN 1007-9327 (print)
ISSN 2219-2840 (online)

LAUNCH DATE
October 1, 1995

FREQUENCY
Weekly

EDITORS-IN-CHIEF

Damian Garcia-Olmo, MD, PhD, Doctor, Professor, Surgeon, Department of Surgery, Universidad Autonoma de Madrid; Department of General Surgery, Fundacion Jimenez Diaz University Hospital, Madrid 28040, Spain

Stephen C Strom, PhD, Professor, Department of Laboratory Medicine, Division of Pathology, Karolinska Institutet, Stockholm 141-86, Sweden

Andrzej S Tarnawski, MD, PhD, DSc (Med), Professor of Medicine, Chief Gastroenterology, VA Long Beach Health Care System, University of California, Irvine, CA, 5901 E. Seventh Str., Long Beach,

CA 90822, United States

EDITORIAL BOARD MEMBERS

All editorial board members resources online at <http://www.wjgnet.com/1007-9327/editorialboard.htm>

EDITORIAL OFFICE

Jin-Lei Wang, Director
Yuan Qi, Vice Director
Ze-Mao Gong, Vice Director
World Journal of Gastroenterology
Baishideng Publishing Group Inc
7901 Stoneridge Drive, Suite 501,
Pleasanton, CA 94588, USA
Telephone: +1-925-2238242
Fax: +1-925-2238243
E-mail: editorialoffice@wjgnet.com
Help Desk: <http://www.f6publishing.com/helpdesk>
<http://www.wjgnet.com>

PUBLISHER

Baishideng Publishing Group Inc
7901 Stoneridge Drive, Suite 501,
Pleasanton, CA 94588, USA
Telephone: +1-925-2238242
Fax: +1-925-2238243
E-mail: bpgoffice@wjgnet.com
Help Desk: <http://www.f6publishing.com/helpdesk>

<http://www.wjgnet.com>

PUBLICATION DATE
May 21, 2017

COPYRIGHT

© 2017 Baishideng Publishing Group Inc. Articles published by this Open-Access journal are distributed under the terms of the Creative Commons Attribution Non-commercial License, which permits use, distribution, and reproduction in any medium, provided the original work is properly cited, the use is non commercial and is otherwise in compliance with the license.

SPECIAL STATEMENT

All articles published in journals owned by the Baishideng Publishing Group (BPG) represent the views and opinions of their authors, and not the views, opinions or policies of the BPG, except where otherwise explicitly indicated.

INSTRUCTIONS TO AUTHORS

Full instructions are available online at <http://www.wjgnet.com/bpg/gerinfo/204>

ONLINE SUBMISSION
<http://www.f6publishing.com>

Prospective Study

Short health scale: A valid measure of health-related quality of life in Korean-speaking patients with inflammatory bowel disease

Soo-Kyung Park, Bong Min Ko, Hyeon Jeong Goong, Jeong Yeon Seo, Sang Hyuk Lee, Hae Lim Baek, Moon Sung Lee, Dong Il Park

Soo-Kyung Park, Jeong Yeon Seo, Sang Hyuk Lee, Hae Lim Baek, Dong Il Park, Division of Gastroenterology, Department of Internal Medicine, Kangbuk Samsung Hospital, Sungkyunkwan University School of Medicine, Seoul 03181, South Korea

Bong Min Ko, Hyeon Jeong Goong, Moon Sung Lee, Digestive Disease Center and Research Institute, Department of Internal Medicine, Soonchunhyang University School of Medicine, Bucheon 13557, South Korea

Author contributions: Park SK designed the research; Park SK, Ko BM and Park DI performed the research; Park SK analyzed the data; Park SK wrote the paper; Goong HJ, Seo JY, Lee SH, Baek HL and Lee MS gave critical revision of the article for important intellectual content; Park DI final approval of the article.

Institutional review board statement: This study was approved by the Institutional Review Board of Kangbuk Samsung Hospital, Korea.

Informed consent statement: All study participants, or their legal guardian, provided informed written consent prior to study enrollment

Conflict-of-interest statement: All authors disclosed no financial relationships relevant to this study.

Data sharing statement: No additional data are available.

Open-Access: This article is an open-access article which was selected by an in-house editor and fully peer-reviewed by external reviewers. It is distributed in accordance with the Creative Commons Attribution Non Commercial (CC BY-NC 4.0) license, which permits others to distribute, remix, adapt, build upon this work non-commercially, and license their derivative works on different terms, provided the original work is properly cited and the use is non-commercial. See: <http://creativecommons.org/licenses/by-nc/4.0/>

Manuscript source: Invited manuscript

Correspondence to: Dong Il Park, MD, PhD, Division of Gastroenterology, Department of Internal Medicine, Kangbuk Samsung Hospital, Sungkyunkwan University School of Medicine, 29 Saemunan-ro, Jongno-gu, Seoul 03181, South Korea. diksmc.park@samsung.com
Telephone: +82-2-20012059
Fax: +82-2-20012049

Received: December 27, 2017

Peer-review started: December 29, 2017

First decision: March 3, 2017

Revised: March 14, 2017

Accepted: May 4, 2017

Article in press: May 4, 2017

Published online: May 21, 2017

Abstract

AIM

To evaluate the short health scale (SHS), a new, simple, four-part visual analogue scale questionnaire that is designed to assess the impact of inflammatory bowel disease (IBD) on health-related quality of life (HRQOL), in Korean-speaking patients with IBD.

METHODS

The SHS was completed by 256 patients with Crohn's disease (CD) and ulcerative colitis (UC). Individual SHS items were correlated with inflammatory bowel disease questionnaire (IBDQ) dimensions and with disease activity to assess validity. Test-retest reliability, responsiveness and patient or disease characteristics with probable association with high SHS scores were analyzed.

RESULTS

Of 256 patients with IBD, 139 (54.3%) had UC and 117 (45.7%) had CD. The correlation coefficients between SHS questions about "symptom burden", "activities of daily living", and "disease-related worry" and their corresponding dimensions in the IBDQ ranged from 0.62 to 0.71, compared with correlation coefficients ranging from -0.45 to -0.61 for their non-corresponding dimensions. There was a stepwise increase in SHS scores, with increasing disease activity in both CD and UC (all *P* values < 0.001). Reliability was confirmed with test-retest correlations ranging from 0.68 to 0.90 (all *P* values < 0.001). Responsiveness was confirmed with the patients who remained in remission. Their SHS scores remained unchanged, except for the SHS dimension "disease-related worry". In the multivariate analysis, female sex was associated with worse "general well-being" (OR = 2.28, 95%CI: 1.02-5.08) along with worse disease activity.

CONCLUSION

The SHS is a valid and reliable measure of HRQOL in Korean-speaking patients with IBD.

Key words: Quality of life; Inflammatory bowel disease; Ulcerative colitis; Crohn's disease; Disease activity

© **The Author(s) 2017.** Published by Baishideng Publishing Group Inc. All rights reserved.

Core tip: The short health scale (SHS) is a new, simple, four-part visual analog scale questionnaire that is designed to assess the impact of inflammatory bowel disease (IBD) on health-related quality of life (HRQOL). In Korean-speaking IBD patients, total SHS scores correlated with total IBDQ scores in both Crohn's disease (CD) and ulcerative colitis (UC). There was a stepwise increase in SHS scores with increasing disease activity in both CD and UC. Reliability was confirmed with test-retest correlations. Thus, SHS is a valid and reliable measure of HRQOL in Korean-speaking patients with IBD.

Park SK, Ko BM, Goong HJ, Seo JY, Lee SH, Baek HL, Lee MS, Park DI. Short health scale: A valid measure of health-related quality of life in Korean-speaking patients with inflammatory bowel disease. *World J Gastroenterol* 2017; 23(19): 3530-3537 Available from: URL: <http://www.wjgnet.com/1007-9327/full/v23/i19/3530.htm> DOI: <http://dx.doi.org/10.3748/wjg.v23.i19.3530>

INTRODUCTION

Crohn's disease (CD) and ulcerative colitis (UC) are the two most common variants of inflammatory bowel disease (IBD); both are chronic relapsing disorders that significantly affect daily life^[1,2]. The biological burden of IBD had been measured using disease activity scales

such as the Crohn's disease activity index (CDAI) in CD^[3]. However, these do not reflect the well-being of patients with chronic illness. In contrast, an important patient-reported outcome, the health-related quality of life (HRQOL), refers to the subjective perception of illness and disease impact on daily life and general well-being; the HRQOL is therefore an essential part of health assessment in patients with IBD in both clinical practice and clinical trials^[4,5]. Early HRQOL scales for IBD involved extensive questions relating to specific symptoms, social function, limitation of activities, and mental health, and were time-consuming to complete and evaluate^[6]. Since then, shorter scales have been developed, such as the short inflammatory bowel disease questionnaire (IBDQ)^[7], and short health scale (SHS)^[8]. The SHS consists of four simple 100-mm visual analog scales assessing factors traditionally associated with HRQOL (symptom burden, activities of daily living, disease related worry, and sense of general well-being). The questions were designed to be open-ended, so that patients could score any or all aspects of their life that they felt were important to them when completing the questionnaire. The SHS was validated in Swedish-speaking^[8,9], Norwegian-speaking^[10], and English-speaking^[11] patients with IBD.

Although the incidence of IBD in Asia has increased rapidly in recent years^[12-14], only a few studies have investigated HRQOL in Korean patients with IBD^[15]. Thus, we aimed to evaluate the SHS in Korean-speaking patients with IBD.

MATERIALS AND METHODS

Patients

A total of 272 patients with IBD, who visited the Kangbuk Samsung Hospital and Soonchunhyang University Hospital, Bucheon between March 2016 and August 2016 were invited to participate in this study. Of these, 265 patients agreed (97.4% response rate). After excluding 9 patients whose questionnaires did not have evaluable SHS data, 256 patients were finally enrolled. This study was approved by the Institutional Review Board of Kangbuk Samsung Hospital, South Korea.

Questionnaires

QOL was measured using the SHS. The questionnaire was designed to be self-administered and patients were asked to place a mark on the 10-cm visual analog scale that they thought was appropriate to their condition (Figure 1). Scores were presented for each of four dimensions including symptom burden, social function, disease-related worry, and sense of general well-being; the scores were then added for a total score. One gastroenterologist (SKP) translated the English SHS to Korean. QOL was also determined using the 32-item IBDQ that collects data on four dimensions, including bowel symptoms, social function,

How severe are the symptoms you suffer from your bowel disease?

No symptoms ○ ————— ○ Very severe symptoms

Do your bowel problems interfere with your activities in daily life?

Not at all ○ ————— ○ Interfere to a very high degree

How much worry does your bowel disease cause?

No worry ○ ————— ○ Constant worry

How is your general feeling of well being?

Very good ○ ————— ○ Dreadful

Figure 1 Short health scale questionnaire.

emotional function, and systemic symptoms. We used the Korean version of the IBDQ, which has been validated for IBD^[15].

Disease activity at the time of questionnaire completion was assessed by consulting physicians without knowledge of the questionnaire results. To assess disease activity, the CDAI was used for CD^[3], and the Mayo score for UC^[16]. CD in remission was defined as a CDAI < 150, mild disease as 150-220, moderate as 220-450, and severe as > 450. UC in remission was defined as a Mayo score 0-2, mild disease as 3-5, moderate as 6-10, and severe as 11-12.

Evaluation of SHS

Validity: We assessed validity by correlating both individual SHS items and total SHS score with IBDQ dimensions and total score. The score for each SHS question should be closely associated with other HRQOL measures reflecting the same dimension of health (convergent validity), whereas the association with variables that measure other health dimensions should be less (discriminant validity). The SHS item "symptom burden" was expected to be closely associated with the IBDQ dimension "bowel symptoms", the SHS item "social function" with the IBDQ dimension "social function", the SHS item "disease-related worry" with the IBDQ dimension "emotional function", and the SHS item "general well-being" with the IBDQ dimension "systemic symptoms" or "emotional function". We also compared SHS scores according to disease activity, as it can be assumed that disease activity would influence QOL (known-groups comparison/predictive validity).

Reliability: Test-retest reliability was determined from results 2 to 8 wk apart for SHS questions in patients in remission.

Responsiveness: Changes in SHS scores in patients who remained in remission and who experienced a change in disease activity, from remission to mild to moderate activity or vice versa, were measured for responsiveness. To evaluate responsiveness, the

patients were offered a second appointment 3-6 mo later, or earlier in the event of deterioration.

Influence of patient or disease characteristics on SHS

Patient or disease characteristics with probable association with high SHS scores were analyzed. High score was defined as ≥ 5 cm for each SHS question.

Statistical analysis

Continuous data were presented as medians and interquartile ranges and categorical variables were expressed as percentages. Correlations between continuous data were analyzed using Spearman's rank correlation coefficient (rs). For test-retest reliability, total score was analyzed using the Bland-Altman plot. Differences in unpaired and paired groups were assessed using the Kruskal-Wallis test and Wilcoxon signed-rank test, respectively. To investigate the influence of patient or disease characteristics on SHS, multivariate logistic regression analysis was performed. In the multivariate analysis, variables with probable association with high scores for each of the four SHS dimensions were included. These variables were age (< 40 years, ≥ 40 years), sex (female, male), education (beyond high school, junior school), smoking status (never, previous, or current smoker), family history (yes, no), disease type (CD, UC), disease duration (≥ 5 years, < 5 years), anti-tumor necrosis factor (TNF) or azathioprine use (yes or no), history of operation (yes or no), and disease activity based on CDAI for CD and Mayo score for UC (remission, mild, moderate, severe). For each variable, the odds ratio (OR) and 95%CI were provided. Two-sided *P* values < 0.05 were considered to be statistically significant. Statistical calculations were performed using SPSS 18.0 (SPSS Inc., Chicago, IL, United States).

RESULTS

Patients

Demographic and disease characteristics are shown in Table 1. Among 256 patients who were finally enrolled, median age was 37 and 64% were male. Of these,

Table 1 Demographic and clinical details of patients *n* (%)

Variables	UC (<i>n</i> = 139)	CD (<i>n</i> = 117)	<i>P</i> value
Age, yr, median (range)	43 (16-70)	32 (17-60)	< 0.001
Sex, Male	83 (59.7)	81 (69.2)	0.11
Education ¹			0.04
Junior (education to age 16)	9 (8.5)	2 (1.9)	
Graduate (education to age 19)	35 (33.0)	28 (26.9)	
Third level education	62 (58.5)	74 (71.2)	
Family history ²	11 (10.3)	4 (3.9)	0.07
Smoking status ³			0.25
Non-smoker	64 (60.4)	64 (63.4)	
Ex-smoker	33 (31.1)	23 (22.8)	
Smoker	9 (8.5)	14 (13.9)	
Disease duration: years, median (range)	6.3 (0.1-26.2)	5.2 (0.1-14.9)	0.06
Disease location			
Proctitis (UC)/colon (CD)	39 (28.1)	27 (23.1)	
Left sided (UC)/small bowel (CD)	47 (33.8)	27 (23.1)	
Pancolitis (UC)/colon+Small bowel (CD)	53 (38.1)	63 (53.8)	
Disease activity			0.16
Remission	82 (59.0)	81/117 (69.2)	
Mild	42 (30.2)	21/117 (17.9)	
Moderate	14 (10.1)	14/117 (11.9)	
Severe	1 (0.7)	1/117 (0.8)	
Previous surgery ⁴	19 (18.6)	34 (33.3)	0.02
Medication			
Azathioprine/6-mercaptopurine	33 (23.7)	72 (61.5)	< 0.001
Anti-TNF	17 (12.2)	31 (26.7)	0.003

Data were available for 210¹, 209², 207³, and 204⁴ patients. CD: Crohn's disease; UC: Ulcerative colitis; TNF: Tumor necrosis factor.

Table 2 Spearman correlations (*r_s*) between short health scale items and inflammatory bowel disease questionnaire dimensions

	Symptoms <i>r_s</i>	Activities <i>r_s</i>	Worry <i>r_s</i>	Well-being <i>r_s</i>	Total score <i>r_s</i>
Crohn's disease					
IBDQ bowel symptoms	-0.66	-0.54	-0.45	-0.52	
IBDQ social function	-0.50	-0.71	-0.5	-0.46	
IBDQ emotional function	-0.49	-0.59	-0.64	-0.67	
IBDQ systemic symptoms	-0.60	-0.61	-0.51	-0.65	
Total score					-0.81
Ulcerative colitis					
IBDQ bowel symptoms	-0.68	-0.52	-0.49	-0.55	
IBDQ social function	-0.55	-0.71	-0.59	-0.56	
IBDQ emotional function	-0.47	-0.59	-0.62	-0.62	
IBDQ systemic symptoms	-0.45	-0.56	-0.50	-0.52	
Total score					-0.71

SHS: Short health scale; IBDQ: Inflammatory bowel disease questionnaire.

139 (54.3%) had UC and 117 (45.7%) had CD. The median duration of disease was 4.8 years.

Evaluation of SHS

Validity: Table 2 shows correlations between the four SHS dimensions and their corresponding IBDQ items. To establish convergent validity and discriminant validity, each SHS question score should be more closely associated with corresponding than with non-corresponding dimensions of the IBDQ questionnaires. In CD, the correlation coefficients between the SHS questions "symptom burden", "activities of daily living", and "disease-related worry" and their corresponding dimensions in the IBDQ ranged from 0.64 to 0.71, compared with correlation coefficients ranging from

-0.45 to -0.63 for their non-corresponding dimensions. In UC, correlation coefficients between the SHS questions "symptom burden", "activities of daily living", and "disease-related worry" and their corresponding dimensions in the IBDQ were also higher (0.61-0.71) than for their non-corresponding dimensions (0.45-0.59). The remaining SHS question score, "general well-being", showed closest correlation with the IBDQ score for emotional function, similar to that for the SHS question score for "worry", with a correlation coefficient of 0.67 for CD and 0.62 for UC.

Correlations between the four SHS dimensions and disease activity scores are shown in Figure 2. There was a stepwise increase in all SHS dimensions, with increasing disease activity. For both CD and UC

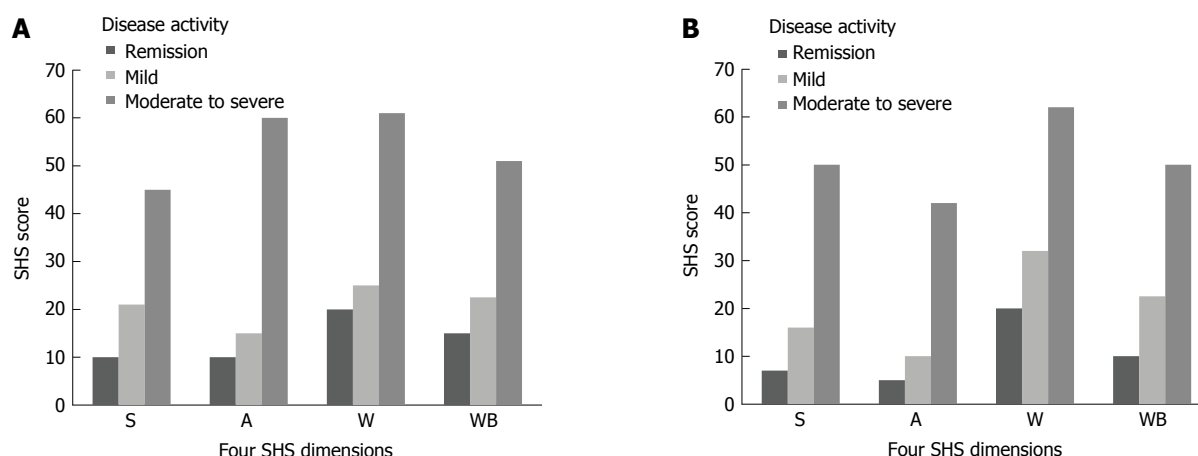


Figure 2 Correlation between the four short health scale dimensions and disease activity score in patients with Crohn's disease (A) and ulcerative colitis (B).

Table 3 Responsiveness to change in disease activity in the short health scale

SHS	Stable remission (n = 67)		Change in disease activity (n = 21)	
	Remission	Remission	Remission	Mild to moderate
Symptoms	4 (0-35)	7 (0-50)	8.5 (5-45)	15 (2-50)
Activities	3.5 (0-70)	8 (0-60)	10 (0-70)	8.5 (0-60)
Worry	17.5 (0-100)	7.5 (0-100) ^a	20 (7-70)	27 (7-60)
Well-being	8.5 (0-55)	6 (0-90)	17.5 (3-80)	30 (0-60)
Total score	40 (0-205)	40 (0-210)	59 (24-265)	87 (20-230)

^a*P* < 0.05 by Wilcoxon signed-rank test. SHS: Short health scale.

patients in remission, median "disease-related worry" scores were 20 (range 0-100), and were higher than for other dimensions.

Reliability: To assess reliability, test-retest results for 36 patients with IBD (20 with UC, 16 with CD) in remission were investigated. The Spearman rank correlation coefficients for test-retest scores for the SHS questions "symptom burden", "activities of daily living", "disease-related worry", and "general well-being" were 0.70 (*P* < 0.01), 0.63 (*P* < 0.01), 0.79 (*P* < 0.01), and 0.60 (*P* < 0.01), respectively. The correlation coefficient for the SHS total score was 0.74 (*P* < 0.01). In the Bland-Altman plot, mean difference was -2.81 (95%CI: -15.55-9.94) (Supplement Figure 1).

Responsiveness: Table 3 shows responsiveness in 88 patients with IBD. Seventy-five patients remained in stable remission and were reexamined after a median 4 mo. Their SHS scores remained unchanged, except for the SHS dimension "disease-related worry", which decreased during follow-up (17.5-7.5, *P* < 0.05). A change in disease activity occurred in 21 patients; 15 were in remission at baseline, but changed to mild to moderate disease activity during the follow-up period; 6 patients with mild to moderate activity at baseline repeated the questionnaires when in remission at the median 4-mo follow-up. There was no significant change in scores in the four SHS dimensions between

the two test occasions.

Influence of other patient and disease characteristics on SHS

In the multivariate analysis, disease activity was associated with high scores for each SHS question after adjusting for patient- or disease-related variables (Table 4). In addition, a 3.53-fold increase (95%CI: 1.18-10.56) in the adjusted odds for high score on "activities of daily living" was observed in young patients. In the SHS dimension "disease-related worry", the adjusted odds were 4.74 (95%CI: 1.06-21.2), 2.98 (95%CI: 1.43-6.20), and 2.56 (95%CI: 1.06-6.22) among patients with more than high school education, disease duration ≥ 5 years, and anti-TNF use, respectively. Female sex was associated with worse "general well-being" (OR = 2.28, 95%CI: 1.02-5.08) along with worse disease activity.

DISCUSSION

In this study, we verified appropriate psychometric properties for the SHS in Korean patients with IBD, as were previously shown in Western patients with IBD^[8-11]. We assessed the SHS for validity, reliability, and responsiveness, and all were confirmed except responsiveness in patients whose disease activity had changed. Associated patient and disease factors such as age, sex, and education were identified in our study.

Table 4 Influence of other demographic and disease factors on high short health scale score

	Symptoms	Activity	Worry	Well-being
Age < 40 (<i>vs</i> ≥ 40)	2.76 (0.79-9.56)	3.53 (1.18-10.56)	1.06 (0.47-3.28)	1.67 (0.70-3.94)
Sex, Female (<i>vs</i> male)	0.85 (0.25-2.90)	3.70 (0.98-7.45)	1.79 (0.83-3.85)	2.28 (1.02-5.08)
Education, beyond high school (<i>vs</i> junior school)	0.33 (0.02-5.51)	1.73 (0.25-11.95)	4.74 (1.06-21.2)	1.31 (0.22-7.75)
Smoking (<i>vs</i> non or ex-smoking)	3.79 (0.86-16.43)	3.43 (0.92-12.77)	1.02 (0.33-3.16)	2.78 (0.94-8.21)
Family history (<i>vs</i> no)	0.34 (0.06-1.92)	1.93 (0.20-18.62)	0.50 (0.14-1.80)	0.41 (0.10-1.59)
Disease, CD (<i>vs</i> UC)	0.54 (0.15-1.91)	0.52 (1.17-1.54)	0.81 (0.35-1.88)	1.41 (0.58-3.43)
Disease duration ≥ 5 yr (<i>vs</i> < 5 yr)	1.33 (0.45-3.89)	2.12 (0.81-5.52)	2.98 (1.43-6.20)	1.62 (0.77-3.45)
Anti-TNF use (<i>vs</i> no)	0.81 (0.18-3.59)	1.69 (0.53-5.44)	2.56 (1.06-6.22)	1.01 (0.48-2.68)
Azathioprine use (<i>vs</i> no)	0.55 (0.16-1.91)	1.39 (0.49-3.94)	1.39 (0.62-3.08)	1.69 (0.72-3.96)
Bowel operation history (<i>vs</i> no)	1.19 (0.28-4.94)	1.80 (0.50-6.47)	0.91 (0.40-2.06)	1.09 (0.44-2.68)
Disease activity, moderate to severe (<i>vs</i> mild or remission)	16.6 (4.19-66.18)	8.02 (2.43-26.43)	12.56 (3.66-43.09)	6.03 (1.98-18.40)

SHS: Short health scale; CD: Crohn's disease; UC: Ulcerative colitis; TNF: Tumor necrosis factor.

The SHS is a simple and standardized four-item questionnaire that is traditionally associated with HRQOL^[8,9]. It is quick and easy to administer, and our Korean patient population appeared to have little difficulty completing the survey. Validity was confirmed by correlation between the four SHS dimensions and their corresponding IBDQ items. In both CD and UC, the SHS questions for "symptom burden" and "activities of daily living" showed a close association with their corresponding dimensions in the IBDQ, and correlation coefficients were higher than for their non-corresponding dimensions, thus establishing convergent and discriminant validity. Previous studies examined either patient ratings of IBD concerns^[8,17] or IBDQ emotional function^[11], and both showed high correlations with the SHS "worry" dimension. In this study, we compared the "worry" dimension with IBDQ emotional function and confirmed convergent and discriminant validity. However, for "general well-being", previous studies examined different dimensions, *i.e.*, either IBDQ emotional function^[8] or IBDQ systemic symptoms^[11]. In this study, we found close associations between the SHS "well-being" dimension for both IBDQ emotional function and systemic symptoms in CD, and emotional function in UC. This is consistent with results in Swedish-speaking patients^[8], and different from those in English-speaking patients^[11]. This indicated that well-being is the most comprehensive among various dimensions associated with HRQOL, which is formed by the interaction of biological, psychological, social, and economic variables in patients with IBD. Validity was also supported by the significantly worse scores for all SHS questions in patients with mild to severe disease, compared with those in remission.

The SHS had good reliability, although it was assessed in a small group of patients in remission, using surveys 2 to 6 wk apart. The correlations between the two measurements were high in both CD and UC, and corresponded with the results of previous studies^[8-11].

Although patients in stable remission showed no significant change in score, the SHS was not responsive

to changes in disease activity. Patients who changed from remission to active disease or vice versa between the two follow-up visits had changes in symptom, worry, well-being, and total scores, but the results did not reach statistical significance, possibly due to the small number of patients. However, patients in stable remission showed no significant change in score, except in the worry dimension. "Disease-related worry" scores were relatively high in patients in remission, compared with scores for other dimensions, and improved after a median 4 mo. It is possible that worry will decrease when a patient is in remission for a certain period of time.

In this study, we also investigated patient and disease factors that might affect QOL. Only a study in Norwegian patients reported factors associated with SHS, and unemployment was adversely associated with SHS social function and general well-being in UC patients^[10]. Interestingly, we found that younger age, higher education, and female sex were adversely associated with SHS activity, worry, and well-being dimensions, respectively. In the worry dimension, longer disease duration and anti-TNF use were also adversely associated. As we expected, moderate to severe disease activity was associated with worse scores in all SHS questions, after adjusting for patient- or disease-related variables, especially in the "symptom burden" dimension.

This is the first study to test and validate the SHS in Asian patients. In addition, associated patient and disease factors in the SHS were identified in our study. The open-ended nature of the four SHS questions helps clinicians determine which component of health is affected, and enables decision-making for therapeutic intervention in bowel inflammation or the need for psychological support. The SHS is comprehensive and simple to complete, and can quickly provide information for use in both clinical practice and clinical trials.

Our study had several limitations. First, most subjects were outpatients in remission. Evaluation

of a population with a higher proportion of patients with moderate to severe disease is needed. Second, the number of patients who entered the study in remission and subsequently had a relapse during follow-up was small, and limited the confirmation of good responsiveness. Third, only Koreans were included, and further studies of other Asians should be performed to determine SHS reliability as an HRQOL instrument in Asia.

In conclusion, the SHS is a valid and reliable measure of HRQOL in Korean-speaking IBD patients. The SHS can be used in clinical trials and clinical practice to identify the main problems affecting QOL in IBD patients.

ACKNOWLEDGMENTS

The authors would like to thank Dr. Henrik Hjortswang for permission to validate the SHS in Korean.

COMMENTS

Background

The short health scale (SHS) was validated in Swedish-speaking, Norwegian-speaking, and English-speaking patients with inflammatory bowel disease (IBD). Although the incidence of IBD in Asia has increased rapidly in recent years, only a few studies have investigated health-related quality of life (HRQOL) in Korean patients with IBD. Thus, we evaluate the SHS in Korean-speaking patients with IBD.

Research frontiers

An important patient-reported outcome, the HRQOL, refers to the subjective perception of illness and disease impact on daily life and general well-being; the HRQOL is therefore an essential part of health assessment in patients with IBD in both clinical practice and clinical trials.

Innovations and breakthroughs

This is the first study to test and validate the SHS in Asian patients. We verified appropriate psychometric properties for the SHS in Korean patients with IBD, as were previously shown in Western patients with IBD. We assessed the SHS for validity, reliability, and responsiveness, and all were confirmed except responsiveness in patients whose disease activity had changed. Associated patient and disease factors such as age, sex, and education were identified in our study.

Applications

The open-ended nature of the four SHS questions helps clinicians determine which component of health is affected, and enables decision-making for therapeutic intervention in bowel inflammation or the need for psychological support. The SHS is comprehensive and simple to complete, and can quickly provide information for use in both clinical practice and clinical trials.

Peer-review

Both the total score for SHS and IBDQ in Crohn's disease and ulcerative colitis as well as reliability should be also presented as Bland-Altman plot.

REFERENCES

- Kappelman MD, Rifas-Shiman SL, Porter CQ, Ollendorf DA, Sandler RS, Galanko JA, Finkelstein JA. Direct health care costs of Crohn's disease and ulcerative colitis in US children and adults. *Gastroenterology* 2008; **135**: 1907-1913 [PMID: 18854185 DOI: 10.1053/j.gastro.2008.09.012]
- Casellas F, López-Vivancos J, Vergara M, Malagelada J. Impact of inflammatory bowel disease on health-related quality of life. *Dig Dis* 1999; **17**: 208-218 [PMID: 10754360]
- Best WR, Beckett JM, Singleton JW, Kern F. Development of a Crohn's disease activity index. National Cooperative Crohn's Disease Study. *Gastroenterology* 1976; **70**: 439-444 [PMID: 1248701]
- Garrett JW, Drossman DA. Health status in inflammatory bowel disease. Biological and behavioral considerations. *Gastroenterology* 1990; **99**: 90-96 [PMID: 2188874]
- Kappelman MD, Long MD, Martin C, DeWalt DA, Kinneer PM, Chen W, Lewis JD, Sandler RS. Evaluation of the patient-reported outcomes measurement information system in a large cohort of patients with inflammatory bowel diseases. *Clin Gastroenterol Hepatol* 2014; **12**: 1315-1323.e2 [PMID: 24183956 DOI: 10.1016/j.cgh.2013.10.019]
- Guyatt G, Mitchell A, Irvine EJ, Singer J, Williams N, Goodacre R, Tompkins C. A new measure of health status for clinical trials in inflammatory bowel disease. *Gastroenterology* 1989; **96**: 804-810 [PMID: 2644154]
- Irvine EJ, Zhou Q, Thompson AK. The Short Inflammatory Bowel Disease Questionnaire: a quality of life instrument for community physicians managing inflammatory bowel disease. CCRPT Investigators. Canadian Crohn's Relapse Prevention Trial. *Am J Gastroenterol* 1996; **91**: 1571-1578 [PMID: 8759664]
- Hjortswang H, Järnerot G, Curman B, Sandberg-Gertzén H, Tysk C, Blomberg B, Almer S, Ström M. The Short Health Scale: a valid measure of subjective health in ulcerative colitis. *Scand J Gastroenterol* 2006; **41**: 1196-1203 [PMID: 16990205 DOI: 10.1080/00365520600610618]
- Stjernman H, Grännö C, Järnerot G, Ockander L, Tysk C, Blomberg B, Ström M, Hjortswang H. Short health scale: a valid, reliable, and responsive instrument for subjective health assessment in Crohn's disease. *Inflamm Bowel Dis* 2008; **14**: 47-52 [PMID: 17828783 DOI: 10.1002/ibd.20255]
- Jelsness-Jørgensen LP, Bernklev T, Moum B. Quality of life in patients with inflammatory bowel disease: translation, validity, reliability and sensitivity to change of the Norwegian version of the short health scale (SHS). *Qual Life Res* 2012; **21**: 1671-1676 [PMID: 22146840 DOI: 10.1007/s11136-011-0081-7]
- McDermott E, Keegan D, Byrne K, Doherty GA, Mulcahy HE. The Short Health Scale: a valid and reliable measure of health related quality of life in English speaking inflammatory bowel disease patients. *J Crohns Colitis* 2013; **7**: 616-621 [PMID: 22921528 DOI: 10.1016/j.crohns.2012.07.030]
- Ooi CJ, Makharia GK, Hilmi I, Gibson PR, Fock KM, Ahuja V, Ling KL, Lim WC, Thia KT, Wei SC, Leung WK, Koh PK, Gearry RB, Goh KL, Ouyang Q, Sollano J, Manatsathit S, de Silva HJ, Rerknimitr R, Pisessongsa P, Abu Hassan MR, Sung J, Hibi T, Boey CC, Moran N, Leong RW. Asia Pacific Consensus Statements on Crohn's disease. Part 1: Definition, diagnosis, and epidemiology: (Asia Pacific Crohn's Disease Consensus--Part 1). *J Gastroenterol Hepatol* 2016; **31**: 45-55 [PMID: 25819140 DOI: 10.1111/jgh.12956]
- Yang SK, Yun S, Kim JH, Park JY, Kim HY, Kim YH, Chang DK, Kim JS, Song IS, Park JB, Park ER, Kim KJ, Moon G, Yang SH. Epidemiology of inflammatory bowel disease in the Songpa-Kangdong district, Seoul, Korea, 1986-2005: a KASID study. *Inflamm Bowel Dis* 2008; **14**: 542-549 [PMID: 17941073 DOI: 10.1002/ibd.20310]
- Puri AS. Epidemiology of Ulcerative Colitis in South Asia. *Int J Res* 2013; **11**: 250-255
- Kim WH, Cho YS, Yoo HM, Park IS, Park EC, Lim JG. Quality of life in Korean patients with inflammatory bowel diseases: ulcerative colitis, Crohn's disease and intestinal Behçet's disease. *Int J Colorectal Dis* 1999; **14**: 52-57 [PMID: 10207731]
- D'Haens G, Sandborn WJ, Feagan BG, Geboes K, Hanauer SB, Irvine EJ, Lémann M, Marteau P, Rutgeerts P, Schölmerich J, Sutherland LR. A review of activity indices and efficacy end points for clinical trials of medical therapy in adults with ulcerative

colitis. *Gastroenterology* 2007; **132**: 763-786 [PMID: 17258735
DOI: 10.1053/j.gastro.2006.12.038]

17 **Drossman DA**, Leserman J, Li ZM, Mitchell CM, Zagami EA,

Patrick DL. The rating form of IBD patient concerns: a new
measure of health status. *Psychosom Med* 1991; **53**: 701-712
[PMID: 1758953]

P- Reviewer: Sadik R, Stanciu C **S- Editor:** Qi Y **L- Editor:** A
E- Editor: Zhang FF





Published by **Baishideng Publishing Group Inc**
7901 Stoneridge Drive, Suite 501, Pleasanton, CA 94588, USA
Telephone: +1-925-223-8242
Fax: +1-925-223-8243
E-mail: bpgoffice@wjgnet.com
Help Desk: <http://www.f6publishing.com/helpdesk>
<http://www.wjgnet.com>



ISSN 1007-9327

