

World Journal of *Cardiology*

World J Cardiol 2017 September 26; 9(9): 715-772





MINIREVIEWS

- 715 Use of carbon dioxide as an intravascular contrast agent: A review of current literature
Ali F, Mangi MA, Rehman H, Kaluski E
- 723 Takotsubo cardiomyopathy: Pathophysiology and role of cardiac biomarkers in differential diagnosis
Gopalakrishnan P, Zaidi R, Sardar MR
- 731 Obesity paradox in patients undergoing coronary intervention: A review
Patel N, Elsaid O, Shenoy A, Sharma A, McFarlane SI
- 737 Brugada type 1 electrocardiogram: Should we treat the electrocardiogram or the patient?
Delise P, Allocca G, Sitta N

ORIGINAL ARTICLE

Retrospective Cohort Study

- 742 Clinical and anatomic predictors of need for repeat atrial fibrillation ablation
Desai Y, Levy MR, Iravanian S, Clermont EC, Kelli HM, Eisner RL, El-Chami MF, Leon AR, Delurgio DB, Merchant FM

Retrospective Study

- 749 Utility and correlation of known anticoagulation parameters in the management of pediatric ventricular assist devices
Bhatia AK, Yabrodi M, Carroll M, Bunting S, Kanter K, Maher KO, Deshpande SR

Observational Study

- 757 Geometric comparison of the mitral and tricuspid valve annulus: Insights from three dimensional transesophageal echocardiography
Makaryus AN, Ismail H, Makaryus JN, Fan D

SYSTEMATIC REVIEWS

- 761 Safety, efficiency and cost effectiveness of Bivalirudin: A systematic review
Mehrzaad M, Tuktamyshov R, Mehrzaad R

ABOUT COVER

Editorial Board Member of *World Journal of Cardiology*, Paul Erne, Professor, Department of Cardiology, University Hospital, Zurich CH-8091, Switzerland

AIM AND SCOPE

World Journal of Cardiology (*World J Cardiol*, *WJC*, online ISSN 1949-8462, DOI: 10.4330) is a peer-reviewed open access journal that aims to guide clinical practice and improve diagnostic and therapeutic skills of clinicians.

WJC covers topics concerning arrhythmia, heart failure, vascular disease, stroke, hypertension, prevention and epidemiology, dyslipidemia and metabolic disorders, cardiac imaging, pediatrics, nursing, and health promotion. Priority publication will be given to articles concerning diagnosis and treatment of cardiology diseases. The following aspects are covered: Clinical diagnosis, laboratory diagnosis, differential diagnosis, imaging tests, pathological diagnosis, molecular biological diagnosis, immunological diagnosis, genetic diagnosis, functional diagnostics, and physical diagnosis; and comprehensive therapy, drug therapy, surgical therapy, interventional treatment, minimally invasive therapy, and robot-assisted therapy.

We encourage authors to submit their manuscripts to *WJC*. We will give priority to manuscripts that are supported by major national and international foundations and those that are of great basic and clinical significance.

INDEXING/ABSTRACTING

World Journal of Cardiology is now indexed in Emerging Sources Citation Index (Web of Science), PubMed, and PubMed Central.

FLYLEAF

I-IV Editorial Board

EDITORS FOR THIS ISSUE

Responsible Assistant Editor: *Xiang Li*
Responsible Electronic Editor: *Ya-Jing Lu*
Proofing Editor-in-Chief: *Lian-Sheng Ma*

Responsible Science Editor: *Jin-Xin Kong*
Proofing Editorial Office Director: *Jin-Lei Wang*

NAME OF JOURNAL
World Journal of Cardiology

ISSN
ISSN 1949-8462 (online)

LAUNCH DATE
December 31, 2009

FREQUENCY
Monthly

EDITORS-IN-CHIEF
Jian-Jun Li, MD, PhD, Professor, Center for Coronary Artery Disease, Fu Wai Cardiovascular Hospital, Chinese Academy of Medical Science, Beijing 100037, China

Giuseppe De Luca, PhD, Assistant Professor, Department of Cardiology, Piedmont University, Novara 28100, Italy

Nathan D Wong, FACC, FAHA, PhD, Director, Professor, Heart Disease Prevention Program, Division of Cardiology, Department of Medicine, University of California, Irvine, CA 92629, United States

city of California, Irvine, CA 92629, United States

EDITORIAL BOARD MEMBERS
All editorial board members resources online at <http://www.wjgnet.com/1949-8462/editorialboard.htm>

EDITORIAL OFFICE
Xiu-Xia Song, Director
World Journal of Cardiology
Baishideng Publishing Group Inc
7901 Stoneridge Drive, Suite 501, Pleasanton, CA 94588, USA
Telephone: +1-925-2238242
Fax: +1-925-2238243
E-mail: editorialoffice@wjgnet.com
Help Desk: <http://www.f6publishing.com/helpdesk>
<http://www.wjgnet.com>

PUBLISHER
Baishideng Publishing Group Inc
7901 Stoneridge Drive, Suite 501, Pleasanton, CA 94588, USA
Telephone: +1-925-2238242
Fax: +1-925-2238243
E-mail: bpgoffice@wjgnet.com
Help Desk: <http://www.f6publishing.com/helpdesk>
<http://www.wjgnet.com>

PUBLICATION DATE
September 26, 2017

COPYRIGHT
© 2017 Baishideng Publishing Group Inc. Articles published by this Open-Access journal are distributed under the terms of the Creative Commons Attribution Non-commercial License, which permits use, distribution, and reproduction in any medium, provided the original work is properly cited, the use is non commercial and is otherwise in compliance with the license.

SPECIAL STATEMENT
All articles published in journals owned by the Baishideng Publishing Group (BPG) represent the views and opinions of their authors, and not the views, opinions or policies of the BPG, except where otherwise explicitly indicated.

INSTRUCTIONS TO AUTHORS
<http://www.wjgnet.com/bpg/gerinfo/204>

ONLINE SUBMISSION
<http://www.f6publishing.com>

Brugada type 1 electrocardiogram: Should we treat the electrocardiogram or the patient?

Pietro Delise, Giuseppe Allocca, Nadir Sitta

Pietro Delise, Division of Cardiology, Clinica Pederzoli, Peschiera SG, 37019 Verona, Italy

Giuseppe Allocca, Nadir Sitta, Division of Cardiology, Hospital of Conegliano, 31015 Treviso, Italy

Author contributions: Delise P was the guarantor of the study, prepared the figure and tables; Allocca G and Sitta N participated in the acquisition and interpretation of the data.

Conflict-of-interest statement: There are no conflicts of interest to report.

Open-Access: This article is an open-access article which was selected by an in-house editor and fully peer-reviewed by external reviewers. It is distributed in accordance with the Creative Commons Attribution Non Commercial (CC BY-NC 4.0) license, which permits others to distribute, remix, adapt, build upon this work non-commercially, and license their derivative works on different terms, provided the original work is properly cited and the use is non-commercial. See: <http://creativecommons.org/licenses/by-nc/4.0/>

Manuscript source: Invited manuscript

Correspondence to: Pietro Delise, MD, Division of Cardiology, Clinica Pederzoli, Peschiera SG, Via Felisati 66, 37019 Verona, Italy. pietro.delise@libero.it
Telephone: +39-41-975205

Received: January 12, 2017

Peer-review started: January 16, 2017

First decision: April 27, 2017

Revised: July 6, 2017

Accepted: July 21, 2017

Article in press: July 24, 2017

Published online: September 26, 2017

syncope of presumed arrhythmic origin. Familial sudden cardiac death (f-SCD) is not a recognized independent risk factor. Finally, positive electrophysiologic study (+EPS) has a controversial prognostic value. Current ESC guidelines recommend implantable cardioverter defibrillator (ICD) implantation in patients with a Brugada type 1 ECG pattern if they have suffered a previous resuscitated cardiac arrest (class I recommendation) or if they have syncope of presumed cardiac origin (class IIa recommendation). In clinical practice, however, many other patients undergo ICD implantation despite the suggestions of the guidelines. In a 2014 cumulative analysis of the largest available studies (including over 2000 patients), we found that 1/3 of patients received an ICD in primary prevention. Interestingly, 55% of these latter were asymptomatic, while 80% had a + EPS. This means that over 30% of subjects with a Brugada type 1 ECG pattern were considered at high risk of SCD mainly on the basis of EPS, to which a class II b indication for ICD is assigned by the current ESC guidelines. Follow-up data confirm that in clinical practice single, and often frail, risk factors overestimate the real risk in subjects with the Brugada type 1 ECG pattern. We can argue that, in clinical practice, many cardiology centers adopt an aggressive treatment in subjects with a Brugada type 1 ECG pattern who are not at high risk. As a result, many healthy persons may be treated in order to save a few patients with a true Brugada Syndrome. Better risk stratification is needed. A multi-parametric approach that considers the contemporary presence of multiple risk factors is a promising one.

Key words: Brugada syndrome; Brugada type 1 electrocardiogram; Sudden cardiac death

© The Author(s) 2017. Published by Baishideng Publishing Group Inc. All rights reserved.

Abstract

Patients with a Brugada type 1 electrocardiogram (ECG) pattern may suffer sudden cardiac death (SCD). Recognized risk factors are spontaneous type 1 ECG and

Core tip: On the basis of frail risk factors, many cardiology centers adopt an aggressive treatment in subjects with a Brugada type 1 electrocardiogram pattern who are not at high risk. As a result, many healthy persons may

be treated in order to save a few patients with a true Brugada Syndrome. Better risk stratification is needed, for example the adoption of a multiparametric approach.

Delise P, Allocca G, Sitta N. Brugada type 1 electrocardiogram: Should we treat the electrocardiogram or the patient? *World J Cardiol* 2017; 9(9): 737-741 Available from: URL: <http://www.wjgnet.com/1949-8462/full/v9/i9/737.htm> DOI: <http://dx.doi.org/10.4330/wjc.v9.i9.737>

INTRODUCTION

Brugada syndrome was first described by the Brugada brothers in 1992^[1] as a distinct heritable clinical entity characterized by malignant arrhythmias in patients without organic heart disease and by a peculiar electrocardiogram (ECG) pattern consisting of coved-type ST elevation ≥ 2 mm in one or more leads from V1 to V3 (Brugada type 1 ECG pattern).

During the last 25 years, both in scientific papers and in current practice, the terms "Brugada type 1 ECG pattern" and "Brugada Syndrome" have frequently been used synonymously. Even the recent ESC guidelines on the prevention of sudden cardiac death (SCD)^[2] equate the Brugada type 1 ECG pattern with Brugada Syndrome, basing the diagnosis of Brugada syndrome only on ECG criteria. This is, to say the least, curious, as the definition of any syndrome includes symptoms and various clinical and instrumental signs.

This semantic error has the deleterious consequence that any subject with a Brugada type 1 ECG pattern is considered to be at risk of SCD, both in the presence and in the absence of symptomatic or asymptomatic arrhythmias.

In medicine, similar mistakes have been made many times in the past when an ECG sign has been equated to a disease. For example, more than 60 years ago, negative T waves were defined by the Mexican School^[3] as "ischemia", and this ECG anomaly was identified with coronary artery disease. This error was corrected only after many years, when it was demonstrated that negative T waves were not always a manifestation of myocardial ischemia; rather, they may be a nonspecific finding or may be due to various heart diseases (hypertrophic cardiomyopathy, arrhythmogenic right ventricular cardiomyopathy, pulmonary embolism, *etc.*).

Likewise, a so-called Brugada type 1 ECG pattern, in addition to indicating a Brugada syndrome, may be a nonspecific, benign finding or the consequence of a right ventricular cardiomyopathy^[4], pulmonary embolism, *etc.* (Brugada phenocopies)^[5].

It follows that "Brugada type 1 ECG pattern" and "Brugada syndrome" should not be used as synonyms, even though, in the presence of a Brugada type 1 ECG, a Brugada syndrome in its asymptomatic phase may be suspected.

CURRENT INDICATIONS FOR IMPLANTABLE CARDIOVERTER DEFIBRILLATOR IN PRIMARY PREVENTION IN SUBJECTS WITH BRUGADA TYPE 1 ECG PATTERN

Current ESC guidelines^[2] recommend implantable cardioverter defibrillator (ICD) implantation in patients with a Brugada type 1 ECG pattern if they have suffered a previous resuscitated cardiac arrest (class I recommendation) or if they have syncope of presumed cardiac origin (class IIa recommendation). In clinical practice, however, many other patients undergo ICD implantation despite the suggestions of the guidelines.

In 2014, Delise *et al.*^[6] performed a cumulative analysis of the largest available studies^[7-16], which included a total of 2176 patients with a Brugada type 1 ECG pattern who had no history of cardiac arrest. In this study, we found that 1/3 of patients received an ICD in primary prevention.

In addition, our cumulative data^[6] (Table 1) show that, frequently in clinical practice, indications for ICD implantation not only do not completely follow current guidelines, but also do not fully consider the weight of the various potential risk factors. Indeed, recognized risk factors are spontaneous type 1 ECG and syncope of presumed arrhythmic origin. In contrast, a drug-induced type 1 ECG pattern and the absence of symptoms identify a low risk^[12-21]. Familial SCD is not a recognized independent risk factor^[16,17,20]. Finally, +EPS has a controversial prognostic value^[11,12,17,19,20].

Interestingly, in our cumulative analysis^[6], of 566 patients who received an ICD in primary prevention, only 45% were symptomatic for syncope. In addition 65% had a spontaneous Brugada type 1 ECG pattern, while 35% had a drug-induced Brugada type 1 ECG. In contrast, 80% had a positive EPS (Table 1). In other words, ICD indication was mainly guided by EPS, to which a class IIb indication for ICD is assigned by the current ESC guidelines^[2].

Further data come from a recent paper by Conte *et al.*^[17], of the Group of Pedro Brugada, who published their 20-year single-center experience of ICD implantation in patients with Brugada ECG pattern/syndrome. In this population, 151 patients received an ICD in primary prevention, 30% of whom were asymptomatic. In these 30 asymptomatic patients, the indication for ICD was mainly guided by a family history of Brugada syndrome (59%), f-SCD (59%) and +EPS (61%). Of note, the vast majority (76%) had a drug-induced type 1 ECG.

The main reason why many cardiologists do not follow guidelines and overestimate the risk of subjects with a Brugada type 1 ECG pattern stems from the frail scientific basis of currently used risk factors. Indeed, all prospective studies (ours included) which have

Table 1 Prevalence of risk factors in patients without previous cardiac arrest who underwent implantable cardioverter defibrillator implantation in primary prevention, cumulative analysis of 5 large studies¹

Studies	n. pts	Spont. type 1 ECG	Drug-I type 1 ECG	Fam. SCD	Syncope	Asympt.	+EPS/EPS performed
Sacher <i>et al</i> ^[8]	202	61% (124)	49% (78)	42% (85)	35% (70)	65% (132)	82% (153/187)
Kamakura <i>et al</i> ^[9]	70	66% (44)	34% (26)	23% (16)	46% (32)	54% (38)	87% (58/67)
Sarkozy <i>et al</i> ^[10]	47	62% (29)	38% (18)	55% (26)	55% (26)	45% (21)	83% (38/46)
Delise <i>et al</i> ^[11]	110	74% (82)	26% (28)	38% (42)	58% (64)	42%	85% (90/106)
Priori <i>et al</i> ^[12]	137	NA	NA	NA	NA	NA	72% (98/137)
Total	566	65% (279/429)	35% (150/429)	39% (169/429)	45% (192/429)	65% (237/429)	80% (437/543)

¹From Delise *et al*^[6], modified. Spont.: Spontaneous; Drug-I: Drug-induced; Fam. SD: Familial sudden death; Asympt.: Asymptomatic; EPS: Electrophysiologic study; NA: Not available.

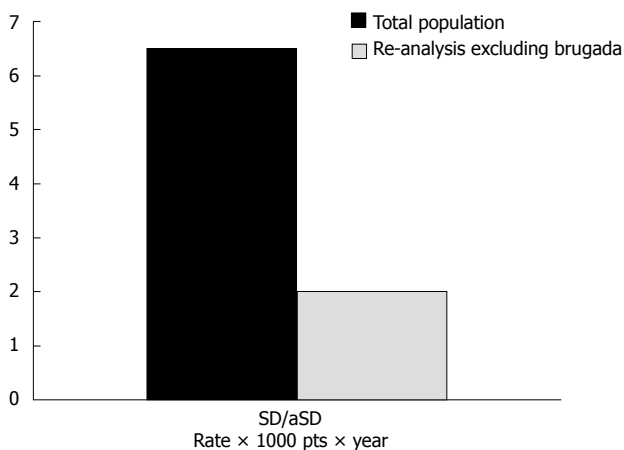


Figure 1 Incidence of sudden cardiac death/aborted sudden cardiac death \times 1000 patients \times year in subjects with type 1 Brugada type 1 electrocardiogram pattern without implantable cardioverter defibrillator. Cumulative analysis of 1366 patients including and excluding the paper of Brugada *et al*^[7] from Delise *et al*^[24] modified. SD: Sudden death.

evaluated risk factors have been based on population registries^[6]. Furthermore, all these studies have evaluated a combined end-point constituted by fast ventricular arrhythmias (FVA) recorded by ICD, and by SCD in subjects without ICD^[6]. However, ICD-recorded FVA are only a surrogate of SCD^[22,23], as FVA are frequently self-terminating and do not necessarily lead to SCD. It follows that, in all these studies, any single risk factor probably overestimates the real risk of SCD.

In addition, all recognized and possible risk factors (spontaneous type 1 ECG, syncope, familial SD, +EPS), when tested singly against recorded FVA in patients with ICD, show an unsatisfactory performance: Variable sensitivity (ranging from 39% to 86%), low specificity (21%-61%) and low positive predictive value (ranging from 9% to 15%)^[6].

CLINICAL OUTCOME OF SUBJECTS WITH BRUGADA TYPE 1 ECG

As all prospective studies have evaluated a combined end-point constituted by fast ventricular arrhythmias (FVA) recorded by ICD, and sudden death (SD) in subjects without ICD^[6], it is impossible to say what the

outcome of patients would be if they did not undergo ICD implantation. Indeed, no randomized studies have been performed that are able to establish the real risk of SCD and the ability of ICD to prevent it.

Despite these limitations, most prospective studies have shown that, in general, the risk of arrhythmias is low in asymptomatic patients, in those with drug-induced type 1 ECG and in those with negative EPS^[6-17]. For example, in the study by Conte *et al*^[17], asymptomatic patients with ICD in primary prevention had an incidence of appropriate shocks of only 0.16 per year.

No prospective study has focused on the risk of SCD in patients without ICD. However, in our cumulative analysis^[6], we also analyzed 1366 patients without ICD separately. These patients were generally asymptomatic (84%) and did not have familial SCD (82%); about half (54%) had a spontaneous and about half (46%) a drug-induced type 1 ECG. EPS was positive in only 22%. In other words, most of them were correctly classified as being at low risk according to the guidelines. In these patients, SCD occurred in 6.5 per 1000 patients per year.

In a subsequent re-analysis of this population^[24], we excluded the 2003 paper by Brugada, because his population had a much higher risk than those of the remaining authors (high prevalence of familial SD, multiple risk factors, three-fold higher incidence of SCD). In this re-analysis, the incidence of SCD fell to 2 per 1000 patients per year (Figure 1). We can argue that patients classified as being at low risk according to the guidelines generally have a benign outcome.

USEFULNESS OF A MULTIPARAMETRIC APPROACH FOR RISK STRATIFICATION

In 2011, our group^[11] suggested that selecting patients on the basis of the presence of single or multiple risk factors could better stratify the risk of events. Specifically, on considering f-SCD, syncope and +EPS as risk factors, we found that, during follow-up, no events occurred in patients with either 0 or 1 risk factor, while events occurred only in patients with 2 or 3 risk factors. This was observed whether the patients had a spontaneous or a drug-induced Brugada type 1 ECG

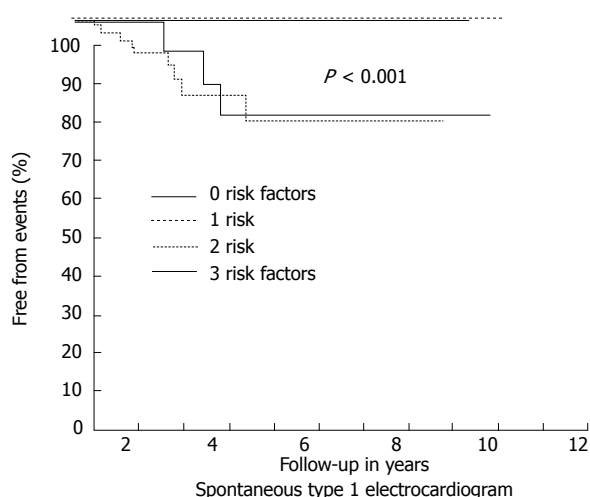


Figure 2 Incidence of events (appropriate implantable cardioverter defibrillator shocks + sudden cardiac death) in patients without implantable cardioverter defibrillator) in subjects with spontaneous Brugada type 1 electrocardiogram (from Delise *et al*^[11] modified).

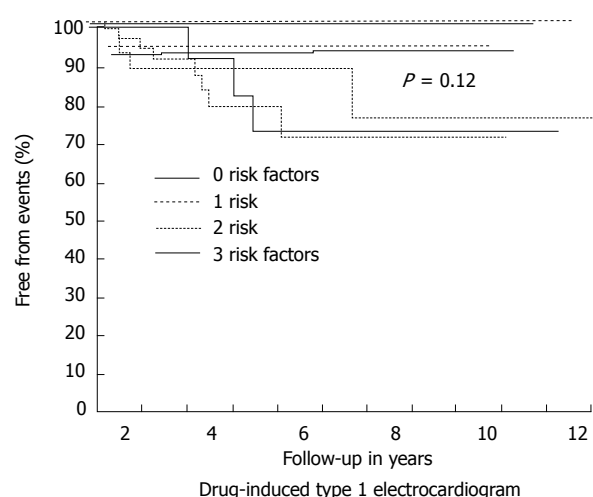


Figure 3 Incidence of events (appropriate implantable cardioverter defibrillator shocks + sudden cardiac death) in patients without implantable cardioverter defibrillator) in subjects with drug-induced Brugada type 1 electrocardiogram (from Delise *et al*^[11] modified).

(Figures 2 and 3). Similar results were reported by Okamura *et al*^[25] in 2015.

Recently, Sieira *et al*^[26], from Pedro Brugada's group, proposed a score model to predict the risk of events in patients with Brugada Syndrome. The model includes several risk factors: Spontaneous type 1 ECG (1 point), early f-SCD (1 point), +EPS (2 points), syncope (2 points), sinus node dysfunction (3 points) and previous aborted SCD (4 points). Interestingly, in line with our data, a significantly increased risk was observed in subjects with more than 2 points.

CONCLUSION

In current clinical practice, many cardiology centers adopt an aggressive treatment in subjects with a Brugada type 1 ECG pattern who are not at high risk. Thus, these subjects undergo ICD implantation or experimental therapies such as ablation of the right ventricular outflow tract^[27,28]. As a result, many healthy persons may be treated in order to save a few patients with a true Brugada Syndrome. The consequences of such a policy are deleterious in terms of the psychological impact on the subjects treated, the procedural risks involved and the costs accruing to the community.

The solution to this problem is not easy. However, it is reasonable to restrict indications only to high-risk patients, as indicated by the guidelines. Moreover, in addition to the indications provided in the guidelines, ICD implantation might be reasonable in subjects with multiple risk factors^[11,25,26]. Finally, in controversial cases and/or in cases at low risk, it is a good rule to discuss indications, contraindications and complications with patients and their families, so that they are aware that there is still a risk, even though it is small.

In the future, only new scientific data will help us to better identify the risk of SCD in subjects with a

Brugada type 1 ECG pattern, a possibly misleading ECG sign.

REFERENCES

- 1 **Brugada P**, Brugada J. Right bundle branch block, persistent ST-segment elevation and sudden cardiac death: a distinct clinical and electrocardiographic syndrome. *J Am Coll Cardiol* 1992; **20**: 1391-1396 [DOI: 10.1016/0735-1097(92)90253-J]
- 2 **Priori SG**, Blomström-Lundqvist C, Mazzanti A, Blom N, Borggrefe M, Camm J, Elliott PM, Fitzsimons D, Hatala R, Hindricks G, Kirchhof P, Kjeldsen K, Kuck KH, Hernandez-Madrid A, Nikolaou N, Norekvål TM, Spaulding C, Van Veldhuisen DJ. 2015 ESC Guidelines for the management of patients with ventricular arrhythmias and the prevention of sudden cardiac death: The Task Force for the Management of Patients with Ventricular Arrhythmias and the Prevention of Sudden Cardiac Death of the European Society of Cardiology (ESC). Endorsed by: Association for European Paediatric and Congenital Cardiology (AEPC). *Eur Heart J* 2015; **36**: 2793-2867 [PMID: 26320108 DOI: 10.1093/eurheartj/ehv316]
- 3 **Cabrera E**, Sodi Pallares D. El gradiente ventricular y la componente anormal en el diagnostico de los infartos del miocardio. *Arch Inst Cardiol Mex* 1943; **7**: 356
- 4 **Martini B**, Nava A, Thiene G, Buja GF, Canciani B, Scognamiglio R, Daliento L, Dalla Volta S. Ventricular fibrillation without apparent heart disease: description of six cases. *Am Heart J* 1989; **118**: 1203-1209 [DOI: 10.1016/0002-8703(89)90011-2]
- 5 **Anselm DD**, Evans JM, Baranchuk A. Brugada phenocopy: A new electrocardiogram phenomenon. *World J Cardiol* 2014; **6**: 81-86 [PMID: 24669289 DOI: 10.4330/wjc.v6.i3.81]
- 6 **Delise P**, Allocca G, Sitta N, DiStefano P. Event rates and risk factors in patients with Brugada syndrome and no prior cardiac arrest: a cumulative analysis of the largest available studies distinguishing ICD-recorded fast ventricular arrhythmias and sudden death. *Heart Rhythm* 2014; **11**: 252-258 [PMID: 24513918 DOI: 10.1016/j.hrthm.2013.10.039]
- 7 **Brugada J**, Brugada R, Brugada P. Determinants of sudden cardiac death in individuals with the electrocardiographic pattern of Brugada syndrome and no previous cardiac arrest. *Circulation* 2003; **108**: 3092-3096 [PMID: 14623800 DOI: 10.1161/01.CIR.0000104568.13957.4F]
- 8 **Sacher F**, Probst V, Iesaka Y, Jacon P, Laborde J, Mizon-Gérard F, Mabo P, Reuter S, Lamaison D, Takahashi Y, O'Neill MD, Garrigue

- S, Pierre B, Jaïs P, Pasquière JL, Hocini M, Salvador-Mazenq M, Nogami A, Amiel A, Defaye P, Bordachar P, Boveda S, Maury P, Klug D, Babuty D, Haïssaguerre M, Mansourati J, Clémenty J, Le Marec H. Outcome after implantation of a cardioverter-defibrillator in patients with Brugada syndrome: a multicenter study. *Circulation* 2006; **114**: 2317-2324 [PMID: 17116772 DOI: 10.1161/CIRCULATIONAHA.106.628537]
- 9 **Kamakura S**, Ohe T, Nakazawa K, Aizawa Y, Shimizu A, Horie M, Ogawa S, Okumura K, Tsuchihashi K, Sugi K, Makita N, Hagiwara N, Inoue H, Atarashi H, Aihara N, Shimizu W, Kurita T, Suyama K, Noda T, Satomi K, Okamura H, Tomoike H; Brugada Syndrome Investigators in Japan. Long-term prognosis of probands with Brugada-pattern ST-elevation in leads V1-V3. *Circ Arrhythm Electrophysiol* 2009; **2**: 495-503 [PMID: 19843917 DOI: 10.1161/CIRCEP.108.816892]
 - 10 **Sarkozy A**, Sorgente A, Boussy T, Casado R, Paparella G, Capulzini L, Chierchia GB, Yazaki Y, De Asmundis C, Coomans D, Brugada J, Brugada P. The value of a family history of sudden death in patients with diagnostic type I Brugada ECG pattern. *Eur Heart J* 2011; **32**: 2153-2160 [PMID: 21727093 DOI: 10.1093/eurheartj/ehr129]
 - 11 **Delise P**, Allocca G, Marras E, Giustetto C, Gaita F, Sciarra L, Calo L, Proclemer A, Marziali M, Rebello L, Berton G, Coro L, Sitta N. Risk stratification in individuals with the Brugada type I ECG pattern without previous cardiac arrest: usefulness of a combined clinical and electrophysiologic approach. *Eur Heart J* 2011; **32**: 169-176 [PMID: 20978016 DOI: 10.1016/j.eurheartj/ehq381]
 - 12 **Priori SG**, Gasparini M, Napolitano C, Della Bella P, Ottonelli AG, Sassone B, Giordano U, Pappone C, Mascioli G, Rossetti G, De Nardis R, Colombo M. Risk stratification in Brugada syndrome: results of the PRELUDE (PRogrammed ELEctrical stimUlation preDICTive valUe) registry. *J Am Coll Cardiol* 2012; **59**: 37-45 [PMID: 22192666 DOI: 10.1016/j.jacc.2011.08.064]
 - 13 **Eckardt L**, Probst V, Smits JP, Bahr ES, Wolpert C, Schimpf R, Wichter T, Boisseau P, Heinecke A, Breithardt G, Borggrefe M, LeMarec H, Böcker D, Wilde AA. Long-term prognosis of individuals with right precordial ST-segment-elevation Brugada syndrome. *Circulation* 2005; **111**: 257-263 [PMID: 15642768 DOI: 10.1161/01.CIR.0000153267.21278.8D]
 - 14 **Takagi M**, Yokoyama Y, Aonuma K, Aihara N, Hiraoka M; Japan Idiopathic Ventricular Fibrillation Study (J-IVFS) Investigators. Clinical characteristics and risk stratification in symptomatic and asymptomatic patients with brugada syndrome: multicenter study in Japan. *J Cardiovasc Electrophysiol* 2007; **18**: 1244-1251 [PMID: 17900255 DOI: 10.1111/j.1540-8167.2007.00971.x]
 - 15 **Giustetto C**, Drago S, Demarchi PG, Dalmaso P, Bianchi F, Masi AS, Carvalho P, Occhetta E, Rossetti G, Riccardi R, Bertona R, Gaita F; Italian Association of Arrhythmology and Cardiac Stimulation (AIAC)-Piedmont Section. Risk stratification of the patients with Brugada type electrocardiogram: a community-based prospective study. *Europace* 2009; **11**: 507-513 [PMID: 19193676 DOI: 10.1093/europace/eup006]
 - 16 **Probst V**, Veltmann C, Eckardt L, Meregalli PG, Gaita F, Tan HL, Babuty D, Sacher F, Giustetto C, Schulze-Bahr E, Borggrefe M, Haïssaguerre M, Mabo P, Le Marec H, Wolpert C, Wilde AA. Long-term prognosis of patients diagnosed with Brugada syndrome: Results from the FINGER Brugada Syndrome Registry. *Circulation* 2010; **121**: 635-643 [PMID: 20100972 DOI: 10.1161/CIRCULATIONAHA.109.887026]
 - 17 **Conte G**, Sieira J, Ciconte G, de Asmundis C, Chierchia GB, Baltogiannis G, Di Giovanni G, La Meir M, Wellens F, Czaplá J, Wauters K, Levinstein M, Saitoh Y, Irfan G, Juliá J, Pappaert G, Brugada P. Implantable cardioverter-defibrillator therapy in Brugada syndrome: a 20-year single-center experience. *J Am Coll Cardiol* 2015; **65**: 879-888 [PMID: 25744005 DOI: 10.1016/j.jacc.2014.12.031]
 - 18 **Antzelevitch C**, Brugada P, Borggrefe M, Brugada J, Brugada R, Corrado D, Gussak I, LeMarec H, Nademanee K, Perez Riera AR, Shimizu W, Schulze-Bahr E, Tan H, Wilde A. Brugada syndrome: report of the second consensus conference: endorsed by the Heart Rhythm Society and the European Heart Rhythm Association. *Circulation* 2005; **111**: 659-670 [PMID: 15655131 DOI: 10.1161/01.CIR.0000152479.54298.51]
 - 19 **Brugada P**, Brugada R, Mont L, Rivero M, Geelen P, Brugada J. Natural history of Brugada syndrome: the prognostic value of programmed electrical stimulation of the heart. *J Cardiovasc Electrophysiol* 2003; **14**: 455-457 [PMID: 12776858 DOI: 10.1046/j.1540-8167.2003.02517.x]
 - 20 **Sroubek J**, Probst V, Mazzanti A, Delise P, Hevia JC, Ohkubo K, Zorzi A, Champagne J, Kostopoulou A, Yin X, Napolitano C, Milan DJ, Wilde A, Sacher F, Borggrefe M, Ellinor PT, Theodorakis G, Nault I, Corrado D, Watanabe I, Antzelevitch C, Allocca G, Priori SG, Lubitz SA. Programmed Ventricular Stimulation for Risk Stratification in the Brugada Syndrome: A Pooled Analysis. *Circulation* 2016; **133**: 622-630 [PMID: 26797467 DOI: 10.1161/CIRCULATIONAHA.115.017885]
 - 21 **Mizusawa Y**, Wilde AA. Brugada syndrome. *Circ Arrhythm Electrophysiol* 2012; **5**: 606-616 [PMID: 22715240 DOI: 10.1161/CIRCEP.111.964577]
 - 22 **Ellenbogen KA**, Levine JH, Berger RD, Daubert JP, Winters SL, Greenstein E, Shalaby A, Schaechter A, Subacius H, Kadish A; Defibrillators in Non-Ischemic Cardiomyopathy Treatment Evaluation (DEFINITE) Investigators. Are implantable cardioverter defibrillator shocks a surrogate for sudden cardiac death in patients with nonischemic cardiomyopathy? *Circulation* 2006; **113**: 776-782 [PMID: 16461817 DOI: 10.1161/CIRCULATIONAHA.105.561571]
 - 23 **Sacher F**, Probst V, Maury P, Babuty D, Mansourati J, Komatsu Y, Marquie C, Rosa A, Diallo A, Cassagneau R, Loizeau C, Martins R, Field ME, Derval N, Miyazaki S, Denis A, Nogami A, Ritter P, Gourraud JB, Ploux S, Rollin A, Zemmoura A, Lamaison D, Bordachar P, Pierre B, Jaïs P, Pasquière JL, Hocini M, Legal F, Defaye P, Boveda S, Iesaka Y, Mabo P, Haïssaguerre M. Outcome after implantation of a cardioverter-defibrillator in patients with Brugada syndrome: a multicenter study-part 2. *Circulation* 2013; **128**: 1739-1747 [PMID: 23995538 DOI: 10.1161/CIRCULATIONAHA.113.001941]
 - 24 **Delise P**, Allocca G, Sitta N. Risk of sudden death in subjects with Brugada type 1 electrocardiographic pattern and no previous cardiac arrest: is it high enough to justify an extensive use of prophylactic ICD? *J Cardiovasc Med (Hagerstown)* 2016; **17**: 408-410 [PMID: 27116235 DOI: 10.2459/JCM.0000000000000253]
 - 25 **Okamura H**, Kamakura T, Morita H, Tokioka K, Nakajima I, Wada M, Ishibashi K, Miyamoto K, Noda T, Aiba T, Nishii N, Nagase S, Shimizu W, Yasuda S, Ogawa H, Kamakura S, Ito H, Ohe T, Kusano KF. Risk stratification in patients with Brugada syndrome without previous cardiac arrest – prognostic value of combined risk factors. *Circ J* 2015; **79**: 310-317 [PMID: 25428522 DOI: 10.1253/circj.CJ-14-1059]
 - 26 **Sieira J**, Conte G, Ciconte G, Chierchia GB, Casado-Arroyo R, Baltogiannis G, Di Giovanni G, Saitoh Y, Juliá J, Mugnai G, La Meir M, Wellens F, Czaplá J, Pappaert G, de Asmundis C, Brugada P. A score model to predict risk of events in patients with Brugada Syndrome. *Eur Heart J* 2017; **38**: 1756-1763 [PMID: 28379344 DOI: 10.1093/eurheartj/ehx119]
 - 27 **Nademanee K**, Veerakul G, Chandanammattha P, Chaothawee L, Ariyachaipanich A, Jirasirirojanakorn K, Likittanasombat K, Bhuripanyo K, Ngarmukos T. Prevention of ventricular fibrillation episodes in Brugada syndrome by catheter ablation over the anterior right ventricular outflow tract epicardium. *Circulation* 2011; **123**: 1270-1279 [PMID: 21403098 DOI: 10.1161/CIRCULATIONAHA.110.972612]
 - 28 **Brugada J**, Pappone C, Berruezo A, Vicedomini G, Manguso F, Ciconte G, Giannelli L, Santinelli V. Brugada Syndrome Phenotype Elimination by Epicardial Substrate Ablation. *Circ Arrhythm Electrophysiol* 2015; **8**: 1373-1381 [PMID: 26291334 DOI: 10.1161/CIRCEP.115.003220]

P-Reviewer: Iacoviello M, Letsas K **S-Editor:** Kong JX

L-Editor: A **E-Editor:** Lu YJ





Published by **Baishideng Publishing Group Inc**
7901 Stoneridge Drive, Suite 501, Pleasanton, CA 94588, USA
Telephone: +1-925-223-8242
Fax: +1-925-223-8243
E-mail: bpgoffice@wjgnet.com
Help Desk: <http://www.f6publishing.com/helpdesk>
<http://www.wjgnet.com>

