

World Journal of *Gastroenterology*

World J Gastroenterol 2017 August 7; 23(29): 5257-5450



**EDITORIAL**

- 5257 Liver and the defects of cholesterol and bile acids biosynthesis: Rare disorders many diagnostic pitfalls
Corso G, Dello Russo A, Gelzo M

REVIEW

- 5266 Contribution of galectin-1, a glycan-binding protein, to gastrointestinal tumor progression
Bacigalupo ML, Carabias P, Troncoso MF
- 5282 From diagnosis to treatment of hepatocellular carcinoma: An epidemic problem for both developed and developing world
Dimitroulis D, Damaskos C, Valsami S, Davakis S, Garmpis N, Spartalis E, Athanasiou A, Moris D, Sakellariou S, Kykalos S, Tsourouflis G, Garmpi A, Delladetsima I, Kontzoglou K, Kouraklis G

ORIGINAL ARTICLE**Basic Study**

- 5295 Partial external biliary diversion in bile salt export pump deficiency: Association between outcome and mutation
Ellinger P, Stindt J, Dröge C, Sattler K, Stross C, Kluge S, Herebian D, Smits SHJ, Burdelski M, Schulz-Jürgensen S, Ballauff A, Schulte am Esch J, Mayatepek E, Häussinger D, Kubitz R, Schmitt L
- 5304 Celecoxib-induced gastrointestinal, liver and brain lesions in rats, counteraction by BPC 157 or L-arginine, aggravation by L-NAME
Drmic D, Kolenc D, Ilic S, Bauk L, Sever M, Zenko Sever A, Luetic K, Suran J, Seiwert S, Sikiric P
- 5313 Hwangryunhaedok-tang induces the depolarization of pacemaker potentials through 5-HT₃ and 5-HT₄ receptors in cultured murine small intestine interstitial cells of Cajal
Kim HJ, Lee GS, Kim H, Kim BJ
- 5324 MicroRNA exhibit altered expression in the inflamed colonic mucosa of ulcerative colitis patients
Valmiki S, Ahuja V, Paul J
- 5333 Salvianolic acid B protects hepatocytes from H₂O₂ injury by stabilizing the lysosomal membrane
Yan XF, Zhao P, Ma DY, Jiang YL, Luo JJ, Liu L, Wang XL
- 5345 PBX1 attributes as a determinant of connexin 32 downregulation in *Helicobacter pylori*-related gastric carcinogenesis
Liu XM, Xu CX, Zhang LF, Huang LH, Hu TZ, Li R, Xia XJ, Xu LY, Luo L, Jiang XX, Li M

Case Control Study

- 5356 Influence of dietary isoflavone intake on gastrointestinal symptoms in ulcerative colitis individuals in remission

Gląbska D, Guzek D, Grudzińska D, Lech G

- 5364 Genetic polymorphisms of *MAFK*, encoding a small Maf protein, are associated with susceptibility to ulcerative colitis in Japan

Arisawa T, Nakamura M, Otsuka T, Jing W, Sakurai N, Takano H, Hayashi T, Ota M, Nomura T, Hayashi R, Shimasaki T, Tahara T, Shibata T

Retrospective Study

- 5371 Elaboration and validation of Crohn's disease anoperineal lesions consensual definitions

Horaist C, de Parades V, Abramowitz L, Benfredj P, Bonnaud G, Bouchard D, Fathallah N, Sénéjoux A, Siproudhis L, Staumont G, Viguier M, Marteau P

- 5379 Efficacy of tolvaptan for the patients with advanced hepatocellular carcinoma

Miyazaki M, Yada M, Tanaka K, Senjyu T, Goya T, Motomura K, Kohjima M, Kato M, Masumoto A, Kotoh K

- 5386 Outcomes of preoperative endoscopic nasobiliary drainage and endoscopic retrograde biliary drainage for malignant distal biliary obstruction prior to pancreaticoduodenectomy

Zhang GQ, Li Y, Ren YP, Fu NT, Chen HB, Yang JW, Xiao WD

Clinical Trials Study

- 5395 Phase I clinical study of personalized peptide vaccination combined with radiotherapy for advanced hepatocellular carcinoma

Shen J, Wang LF, Zou ZY, Kong WW, Yan J, Meng FY, Chen FJ, Du J, Shao J, Xu QP, Ren HZ, Li RT, Wei J, Qian XP, Liu BR

Observational Study

- 5405 Transition clinic attendance is associated with improved beliefs and attitudes toward medicine in patients with inflammatory bowel disease

Fu N, Jacobson K, Round A, Evans K, Qian H, Bressler B

- 5412 Gut barrier failure biomarkers are associated with poor disease outcome in patients with primary sclerosing cholangitis

Tornai T, Palyu E, Vitalis Z, Tornai I, Tornai D, Antal-Szalmas P, Norman GL, Shums Z, Veres G, Dezsofi A, Par G, Par A, Orosz P, Szalay F, Lakatos PL, Papp M

- 5422 Efficacy of forced coagulation with low high-frequency power setting during endoscopic submucosal dissection

Ishida T, Toyonaga T, Ohara Y, Nakashige T, Kitamura Y, Ariyoshi R, Takihara H, Baba S, Yoshizaki T, Kawara F, Tanaka S, Morita Y, Umegaki E, Hoshi N, Azuma T

Prospective Study

- 5431** Clinical outcomes of isolated renal failure compared to other forms of organ failure in patients with severe acute pancreatitis

Gougol A, Dugum M, Dudekula A, Greer P, Slivka A, Whitcomb DC, Yadav D, Papachristou GI

SYSTEMATIC REVIEW

- 5438** Laparoscopic ultrasonography as an alternative to intraoperative cholangiography during laparoscopic cholecystectomy

Dili A, Bertrand C

Contents

World Journal of Gastroenterology
Volume 23 Number 29 August 7, 2017

ABOUT COVER

Editorial board member of *World Journal of Gastroenterology*, Shinji Tanaka, MD, PhD, Professor, Department of Endoscopy, Hiroshima University Hospital, Hiroshima 734-8551, Japan

AIMS AND SCOPE

World Journal of Gastroenterology (*World J Gastroenterol*, *WJG*, print ISSN 1007-9327, online ISSN 2219-2840, DOI: 10.3748) is a peer-reviewed open access journal. *WJG* was established on October 1, 1995. It is published weekly on the 7th, 14th, 21st, and 28th each month. The *WJG* Editorial Board consists of 1375 experts in gastroenterology and hepatology from 68 countries.

The primary task of *WJG* is to rapidly publish high-quality original articles, reviews, and commentaries in the fields of gastroenterology, hepatology, gastrointestinal endoscopy, gastrointestinal surgery, hepatobiliary surgery, gastrointestinal oncology, gastrointestinal radiation oncology, gastrointestinal imaging, gastrointestinal interventional therapy, gastrointestinal infectious diseases, gastrointestinal pharmacology, gastrointestinal pathophysiology, gastrointestinal pathology, evidence-based medicine in gastroenterology, pancreatology, gastrointestinal laboratory medicine, gastrointestinal molecular biology, gastrointestinal immunology, gastrointestinal microbiology, gastrointestinal genetics, gastrointestinal translational medicine, gastrointestinal diagnostics, and gastrointestinal therapeutics. *WJG* is dedicated to become an influential and prestigious journal in gastroenterology and hepatology, to promote the development of above disciplines, and to improve the diagnostic and therapeutic skill and expertise of clinicians.

INDEXING/ABSTRACTING

World Journal of Gastroenterology (*WJG*) is now indexed in Current Contents[®]/Clinical Medicine, Science Citation Index Expanded (also known as SciSearch[®]), Journal Citation Reports[®], Index Medicus, MEDLINE, PubMed, PubMed Central and Directory of Open Access Journals. The 2017 edition of Journal Citation Reports[®] cites the 2016 impact factor for *WJG* as 3.365 (5-year impact factor: 3.176), ranking *WJG* as 29th among 79 journals in gastroenterology and hepatology (quartile in category Q2).

FLYLEAF

I-IX Editorial Board

EDITORS FOR THIS ISSUE

Responsible Assistant Editor: *Xiang Li*
Responsible Electronic Editor: *Dan Li*
Proofing Editor-in-Chief: *Lian-Sheng Ma*

Responsible Science Editor: *Ze-Mao Gong*
Proofing Editorial Office Director: *Jin-Lei Wang*

NAME OF JOURNAL
World Journal of Gastroenterology

ISSN
ISSN 1007-9327 (print)
ISSN 2219-2840 (online)

LAUNCH DATE
October 1, 1995

FREQUENCY
Weekly

EDITORS-IN-CHIEF
Damian Garcia-Olmo, MD, PhD, Doctor, Professor, Surgeon, Department of Surgery, Universidad Autonoma de Madrid; Department of General Surgery, Fundacion Jimenez Diaz University Hospital, Madrid 28040, Spain

Stephen C Strom, PhD, Professor, Department of Laboratory Medicine, Division of Pathology, Karolinska Institutet, Stockholm 141-86, Sweden

Andrzej S Tarnawski, MD, PhD, DSc (Med), Professor of Medicine, Chief Gastroenterology, VA Long Beach Health Care System, University of California, Irvine, CA, 5901 E. Seventh Str., Long Beach,

CA 90822, United States

EDITORIAL BOARD MEMBERS
All editorial board members resources online at <http://www.wjgnet.com/1007-9327/editorialboard.htm>

EDITORIAL OFFICE
Jin-Lei Wang, Director
Yuan Qi, Vice Director
Ze-Mao Gong, Vice Director
World Journal of Gastroenterology
Baishideng Publishing Group Inc
7901 Stoneridge Drive, Suite 501,
Pleasanton, CA 94588, USA
Telephone: +1-925-2238242
Fax: +1-925-2238243
E-mail: editorialoffice@wjgnet.com
Help Desk: <http://www.f6publishing.com/helpdesk>
<http://www.wjgnet.com>

PUBLISHER
Baishideng Publishing Group Inc
7901 Stoneridge Drive, Suite 501,
Pleasanton, CA 94588, USA
Telephone: +1-925-2238242
Fax: +1-925-2238243
E-mail: bpoffice@wjgnet.com
Help Desk: <http://www.f6publishing.com/helpdesk>

<http://www.wjgnet.com>

PUBLICATION DATE
August 7, 2017

COPYRIGHT
© 2017 Baishideng Publishing Group Inc. Articles published by this Open-Access journal are distributed under the terms of the Creative Commons Attribution Non-commercial License, which permits use, distribution, and reproduction in any medium, provided the original work is properly cited, the use is non commercial and is otherwise in compliance with the license.

SPECIAL STATEMENT
All articles published in journals owned by the Baishideng Publishing Group (BPG) represent the views and opinions of their authors, and not the views, opinions or policies of the BPG, except where otherwise explicitly indicated.

INSTRUCTIONS TO AUTHORS
Full instructions are available online at <http://www.wjgnet.com/bpg/gerinfo/204>

ONLINE SUBMISSION
<http://www.f6publishing.com>

Observational Study

Efficacy of forced coagulation with low high-frequency power setting during endoscopic submucosal dissection

Tsukasa Ishida, Takashi Toyonaga, Yoshiko Ohara, Tadao Nakashige, Yasuaki Kitamura, Ryusuke Ariyoshi, Hiroshi Takihara, Shinichi Baba, Tetsuya Yoshizaki, Fumiaki Kawara, Shinwa Tanaka, Yoshinori Morita, Eiji Umegaki, Namiko Hoshi, Takeshi Azuma

Tsukasa Ishida, Yoshiko Ohara, Yasuaki Kitamura, Ryusuke Ariyoshi, Tetsuya Yoshizaki, Fumiaki Kawara, Shinwa Tanaka, Yoshinori Morita, Eiji Umegaki, Namiko Hoshi, Takeshi Azuma, Division of Gastroenterology, Department of Internal Medicine, Graduate School of Medicine, Kobe University, Kobe 650-0017, Japan

Takashi Toyonaga, Department of Endoscopy, Kobe University Hospital, Kobe 650-0017, Japan

Takashi Toyonaga, Tadao Nakashige, Hiroshi Takihara, Shinichi Baba, Department of Endoscopy, Kishiwada Tokushukai Hospital, Osaka 596-0042, Japan

Author contributions: Ishida T, Toyonaga T and Ohara Y designed the study; Kitamura Y, Ariyoshi R, Takihara H, Baba S, Yoshizaki T, Kawara F and Tanaka S participated in the acquisition, analysis, and interpretation of the data; Ishida T wrote the manuscript; Ohara Y and Hoshi N revised the article and suggested the comments; Morita Y, Umegaki E and Azuma T supervised the report.

Institutional review board statement: This study was reviewed and approved by both the ethics committees of Kobe University Hospital and Kishiwada Tokushukai Hospital.

Informed consent statement: All study participants, or their legal guardian, provided informed written consent prior to study enrollment.

Conflict-of-interest statement: Toyonaga T invented the FlushKnife-BT in conjunction with Fujifilm and received royalties from its sale; Ishida T, Ohara Y, Nakashige T, Kitamura Y, Ariyoshi R, Takihara H, Baba S, Yoshizaki T, Kawara F, Tanaka S, Morita Y, Umegaki E, Hoshi N, and Azuma T have no conflicts of interest or financial ties to disclose.

Data sharing statement: No additional data are available.

Open-Access: This article is an open-access article which was

selected by an in-house editor and fully peer-reviewed by external reviewers. It is distributed in accordance with the Creative Commons Attribution Non Commercial (CC BY-NC 4.0) license, which permits others to distribute, remix, adapt, build upon this work non-commercially, and license their derivative works on different terms, provided the original work is properly cited and the use is non-commercial. See: <http://creativecommons.org/licenses/by-nc/4.0/>

Manuscript source: Unsolicited manuscript

Correspondence to: Takashi Toyonaga, MD, PhD, Department of Endoscopy, Kobe University Hospital, 7-5-1 Kusunoki-cho, Chuo-ku, Kobe 650-0017, Japan. toyonaga@med.kobe-u.ac.jp
Telephone: +81-78-3825774
Fax: +81-78-3826309

Received: January 27, 2017

Peer-review started: February 4, 2017

First decision: March 16, 2017

Revised: March 31, 2017

Accepted: June 19, 2017

Article in press: June 19, 2017

Published online: August 7, 2017

Abstract

AIM

To investigate the hemostatic ability of the S and F1-10 methods in clinical and *ex vivo* studies.

METHODS

The hemostatic abilities of the two methods were analyzed retrospectively in all six gastric endoscopic submucosal dissection cases. The treated vessel diameter, compressed vessel frequency, and bleeding frequency after cutting the vessels were noted by the

recorded videos. The coagulation mechanism of the two power settings was evaluated using the data recording program and histological examination on macro- and microscopic levels in the *ex vivo* experiments using porcine tissues.

RESULTS

F1-10 method showed a significantly better hemostatic ability for vessels ≥ 2 mm in diameter and a trend of overall better coagulation effect, evaluated by the bleeding rate after cutting the vessels. F1-10 method could sustain electrical current longer and effectively coagulate the tissue wider and deeper than the S method in the porcine model.

CONCLUSION

F1-10 method is suggested to achieve a stronger hemostatic effect than the S method in clinical procedures and *ex vivo* models.

Key words: Endoscopic submucosal dissection; Electrosurgery; Endoknife; Hemostatic effect; The forced coagulation mode

© The Author(s) 2017. Published by Baishideng Publishing Group Inc. All rights reserved.

Core tip: The prevention of bleeding during endoscopic submucosal dissection (ESD) is one of the most important factors in safe and successful tumor removal. We investigated the difference in bleeding rates between S method and F1-10 method in stomach ESD. The investigation suggests that F1-10 method can achieve a stronger hemostatic effect than S method for large vessels. In addition, we investigated the difference of the hemostatic strength and mechanism using *ex vivo* model. F1-10 method could sustain electrical current longer and effectively coagulate wider and deeper areas of tissue than S method, resulting in a strong hemostatic effect.

Ishida T, Toyonaga T, Ohara Y, Nakashige T, Kitamura Y, Ariyoshi R, Takihara H, Baba S, Yoshizaki T, Kawara F, Tanaka S, Morita Y, Umegaki E, Hoshi N, Azuma T. Efficacy of forced coagulation with low high-frequency power setting during endoscopic submucosal dissection. *World J Gastroenterol* 2017; 23(29): 5422-5430 Available from: URL: <http://www.wjgnet.com/1007-9327/full/v23/i29/5422.htm> DOI: <http://dx.doi.org/10.3748/wjg.v23.i29.5422>

INTRODUCTION

Electrosurgery is used in many fields of medicine and is one of the most commonly used energy system in surgery. Basic understanding of electricity is required for the safe use of electrosurgical technology for patient care^[1-6]. In the endoscopic field of gastroenterology,

endoscopic mucosal resection and endoscopic submucosal dissection (ESD) are popular therapeutic strategies to resect benign and early cancerous lesions that require the use of an electrosurgical generator^[7]. Preventing bleeding during operation, especially in ESD, is one of the most important factors to accomplish safe and successful tumor removal^[8].

The modern electrosurgery has various coagulation modes. The forced coagulation utilizes a high output voltage > 200 Vp with an interrupted waveform. The forced coagulation creates sparks, which coagulate on superficial tissues. At the same time, a high output voltage coagulation mode, such as the forced coagulation, generally has a cutting ability^[9]. In ESD, it can create appropriate coagulation for small vessels, such as the capillaries; however, its effect for non-small vessels larger than the capillaries is insufficient, because the non-small vessels are cut before being dehydrated adequately and have a risk of bleeding. Therefore, the forced coagulation mode is thought to be unsuitable for pre-coagulation of large vessels.

On the other hand, the peak voltage between the active electrode and the target tissue in the soft coagulation mode is limited to < 200 Vp. This mode does not cause any sparks, only uses Joule's heat, and avoids rupturing the vessels^[10,11].

We previously reported the effectiveness of vessel-sealing with endoknife compression using the soft coagulation mode (S method) in ESD^[12]. This method is useful for coagulation without bleeding before cutting relatively large vessels, such as those penetrating between the muscularis propria. However, an important limitation of this mode is that the current cannot flow to the tissue when its resistance becomes too high because of the limited voltage below 200 Vp. Therefore, it has a risk of inadequate coagulation when the vessels are too large and the tissue resistance becomes too high while processing. Owing to this, hemostatic forceps were generally used to pre-coagulate large vessels. Therefore, we required a more effective setting for large vessels. The forced coagulation mode is usually not used for pre-coagulation; however, we found when the HF (high-frequency) power is reduced to a quite low level, it can avoid generating sparks. It was suggested that the forced coagulation mode with a low HF power setting be used for pre-coagulation to process larger vessels. Based on these, vessel-sealing with endoknife compression using the forced coagulation mode with low HF power setting (Effect 1, 10 W: F1-10 method) was also used in our facility (The peak voltage in the forced coagulation is adjusted from Effect 1 to 4; Effect 1 is the lowest peak voltage setting).

Accordingly, this setting hardly causes vessel rupture in spite of using the forced coagulation mode. Therefore, we retrospectively analyzed the effectiveness of bleeding control by the S and F1-10 methods to find

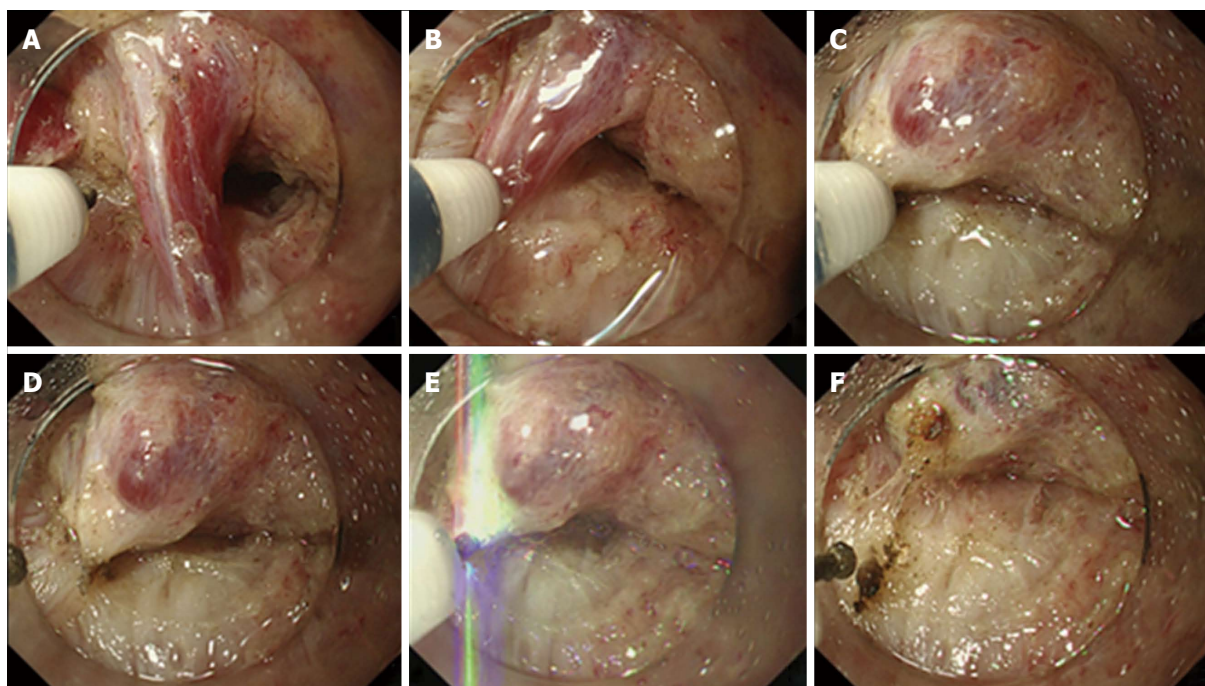


Figure 1 Process of the vessel-sealing with endoknife compression technique. A: The vessel penetrating between the muscularis propria is exposed; B-D: The vessel is compressed by the FlushKnife-BT 2.5 mm and coagulated using the S method or F method until the color turned white, which indicates a complete desiccation of the vessel. If it does not turn white completely, we tried this method from the other side; E and F: Finally, the vessel is cut with the FlushKnife-BT 2.5 mm using the forced coagulation mode (Effect 3, 50 W).

the optimum power setting. Moreover, the mechanism of coagulation was analyzed by *ex vivo* experiments using porcine tissues to further evaluate the coagulation ability of these two settings.

MATERIALS AND METHODS

Patients

Between April and December 2014, a single expert endoscopist (Toyonaga T) with an experience of > 4000 cases of ESD performed ESD to treat 36 gastric lesions at Kobe University Hospital and Kishiwada Tokushukai Hospital. Based on the clinical records and recorded videos of the ESD sessions, 22 cases were treated with only the S method and 14 cases with only the F1-10 method. Of these, the patients and lesions that met the following conditions, which can influence the bleeding tendency of the patients, and those lesions typically require no pre-coagulation, were excluded from this study: (1) patients under medication with any antiplatelet or anticoagulation effect; (2) patients undergoing dialysis; (3) lesions in the antrum; (4) lesions with ulcer; and (5) resected specimen < 30 mm. As a result, six cases each with the S and F1-10 methods were included in the study.

Informed consent for the procedure was obtained from all patients; this retrospective study was approved by both the ethics committees of Kobe University Hospital and Kishiwada Tokushukai Hospital.

Vessel-sealing with endoknife compression technique

ESD was carried out with a FlushKnife-BT 2.5 mm (DK-2618JB; Fujifilm, Tokyo, Japan) through a conventional single-channel endoscope (GIF-Q240 Olympus, Tokyo, Japan) with a transparent hood (Top Co., Ltd. Tokyo, Japan) at the tip of the endoscope. VIO 300D (ERBE Elektromedizin, Tübingen, DEU) was used as the electrical surgical generator.

Vessel-sealing with endoknife compression was carried out as follows: (1) exposure and isolation of the target vessel in the submucosal layer; (2) compression of the vessel with the FlushKnife-BT and coagulating it with the S method (Effect 7, 100 W) or F1-10 method (Effect 1, 10 W) until the vessel turned white, which is a sign of coagulation completion; and (3) cutting of the vessel using the forced coagulation mode (Effect 3, 50 W) (Figure 1A-F)^[12]. This technique was initially applied to process the vessel; however, when sufficient coagulation was not achieved, hemostatic forceps were used. Thereafter, when the same or larger-sized vessel was found in the same patient, hemostatic forceps were sometimes used without the trial of vessel-sealing because successful sealing was not expected.

A total of 12 recorded ESD sessions, including six each of the S and F1-10 method, were viewed by two endoscopists (Ishida T and Ohara Y). The treatment time was counted from the beginning of the local injection to the end of the treatment. The diameter of the processed vessels, frequency of the compressed

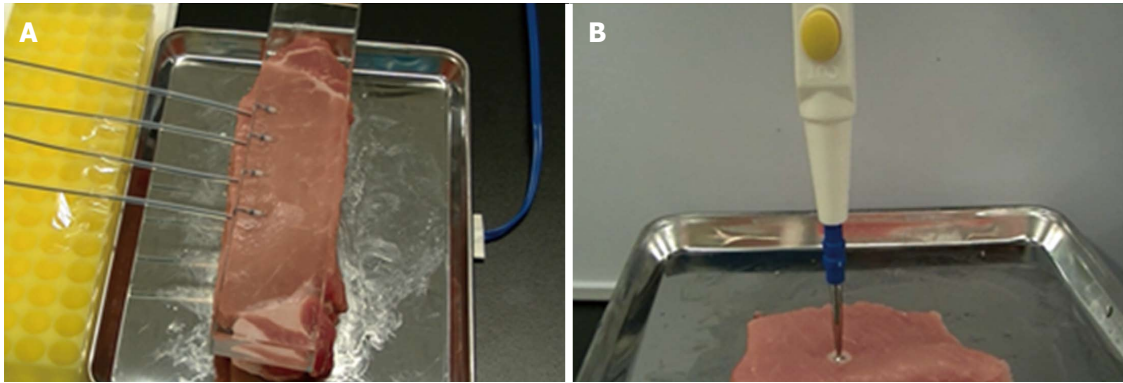


Figure 2 Evaluation of coagulation by an *ex vivo* model. A: The FlushKnife-BT 2.5 mm was placed on the fresh pork block and lightly pressed by the transparent glass to apply even pressure to each tip; B: The 3-mm ball tip electrodes were used to investigate the width and depth of the coagulation.

Table 1 Patient and lesion baseline data in the S and F1-10 methods

	S method (n = 6)	F1-10 method (n = 6)	P ³ value
Age, median (yr) (range)	70 (64-87)	71 (53-79)	0.81
Sex (male/female)	5:1	4:2	0.59
Lesion location, U/M/L ¹	3/3/0	4/2/0	0.64
Histology, well/mod/poor	6/0/0	6/0/0	1.00
Tumor size, median (mm) (range)	13.5 (8-36)	16 (6-23)	0.60
Resected size, median (mm) (range)	50.5 (33-64)	44.5 (31-56)	0.63
Depth of tumor invasion, M/SM1/SM2 ²	4/2/0	3/1/2	0.42
Median time of treatment (min)	65	52.5	0.69
Postoperative bleeding rate	0	0	1.00
<i>En bloc</i> resection rate	100%	100%	1.00

¹The three portions of the stomach; ²Depth of tumor invasion was classified as follows: M, tumor confined to the mucosa; SM1, tumor confined within 0.5 mm of the muscularis mucosae; SM2, tumor invasion is 0.5 mm or deeper into the muscularis mucosae; ³Categorical variables were compared using the two-sided Fisher's exact test and χ^2 test. Continuous variables were compared using the Wilcoxon's rank-sum test. U: Upper third; M: Middle third; L: Lower third.

vessel by the FlushKnife-BT, and time to complete the coagulation were evaluated in a blind manner. The diameter of the vessels was calculated by comparing it with the ball tip (0.9 mm) or the shaft (0.5 mm) of the FlushKnife, sheath (2.7 mm), and length between the sheath and the ball tip (2.5 mm)^[13]. Bleeding after procession was defined when it required the use of hemostatic forceps or more than thrice the additional hemostatic procedure using the FlushKnife-BT. The bleeding rates after endoknife pre-coagulation were compared between the S and F1-10 methods.

Evaluation of coagulation by an *ex vivo* model

A 2.5-cm thick fresh pork block with a return electrode underneath was prepared in the metal vat. The unused FlushKnife-BT 2.5 mm was placed on the block and lightly pressed by the transparent glass to

apply even pressure to each tip (Figure 2A). The VIO 300D was used as the electrosurgical generator, and electrical current was applied using the two different power settings, the S method (Effect 7, 100 W) and F1-10 method (Effect 1, 10 W), five times each with an unused FlushKnife-BT every time. The peak voltage (Vp), current elapsed time (s), and electric energy (W) were measured with the lapse of time by a data recording program (VIO DOKU, ERBE Elektromedizin, Tübingen, DEU). The current elapsed time was defined as the time from the start of the electric current until it went off. The 3-mm ball tip electrodes were used to investigate the depth of coagulation (Figure 2B) because the tip of the FlushKnife-BT was too small to evaluate the deference of the coagulated area. Paraffin-embedded sections were made, and hematoxylin-eosin (H and E) staining was performed to microscopically confirm the tissue denaturation in the examination using the FlushKnife-BT.

Statistical analysis

Categorical variables were compared using the two-sided Fisher's exact test and χ^2 test. Continuous variables were compared using the Wilcoxon's rank-sum test. Statistical significances were defined as $P < 0.05$. All statistical analyses were performed using the JMP[®] 11 (SAS Institute Inc., Cary, NC, United States).

RESULTS

Clinical results of gastric ESD

Patient and treated lesion characteristics are shown in Table 1. No significant difference was found between the S and F1-10 method groups. The total number of vessels that required coagulation was 61 and 63 in the S and F1-10 method groups, respectively. Notably, 12 vessels in the S method and one in the F1-10 method were treated by hemostatic forceps, without any trial of the endoknife pre-coagulation. Among these, seven vessels in the S method and one in the F1-10 method were treated with forceps because the vessels were

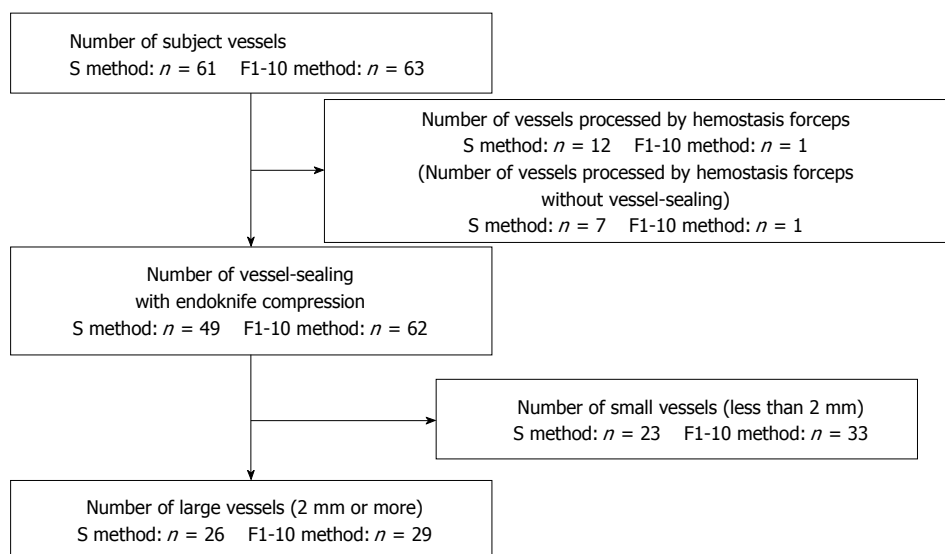


Figure 3 Vessels processed by the vessel-sealing with endoknife compression.

Table 2 Results of the vessel diameter, frequency of the compressed vessel, and coagulation time in the vessel-sealing with endoknife compression technique during gastric endoscopic submucosal dissection

	S method	F1-10 method	P ¹ value
Number of vessels processed by vessel-sealing with endoknife compression	49	62	
Median vessel diameter (mm) (range)	2 (1-3)	1.5 (1-3)	0.68
Median frequency of compressed vessel (times) (range)	2 (1-8)	2 (1-5)	0.11
Median time of coagulation (s) (range)	9 (2-48)	10 (1-58)	0.11

¹Continuous variables were compared using the Wilcoxon's rank-sum test.

larger than the vessel with failed precoagulation in the same patient. The rest of the 49 and 61 vessels in the S and F1-10 methods, respectively, processed by endoknife precoagulation were compared for bleeding control efficacy of the electrical output settings (Figure 3). The details of the processed vessels are shown in Table 2. The median vessel diameter was 2 mm in the S method and 1.5 mm in the F1-10 method. The median frequency of the compressed vessel was twice in both methods, and the median coagulation time was 9 s and 10 s in the S and F1-10 methods, respectively. No significant difference was found between the S and F1-10 methods. The bleeding rate after vessel processing was 18.4% (8/49) and 4.8% (3/62) in the S and F1-10 methods, respectively ($P = 0.058$, OR = 3.84, 95%CI: 0.96-15.34). No statistically significant differences were found; however, the F1-10 method strongly showed a trend in preventing bleeding after precoagulation compared with the S method ($P =$

0.058). We further investigated the bleeding rates of the large vessels, defined as ≥ 2 mm in diameter. There were 26 and 29 large vessels in the S and F1-10 methods, respectively. The bleeding rates of the large vessels were 26.9% (7/26) and 3.4% (1/29) in the S and F1-10 methods, respectively, which were significantly different ($P = 0.021$, OR = 10.32, 95%CI: 1.17-90.78) (Table 3).

Ex vivo experimental results

The peak voltage, current elapsed time, and electric energy were measured by the VIO DOKU using the FlushKnife-BT in a porcine block. The median peak voltage was 172 Vp and 560 Vp in the S and F1-10 methods, respectively. The time-dependent output power is shown in Figure 4. The median current elapsed time was 0.22 s and 1.54 s in the S and F1-10 methods, respectively; the F1-10 method could keep the electric current longer than the S method. The mean total electrical energy was 6.34 W and 12.5 W in the S and F1-10 methods, respectively (Table 4).

The width and depth of coagulation using the 3-mm ball tip electrode were wider (8 mm vs 5 mm) and deeper (7 mm vs 3 mm) in the F1-10 method compared with the S method in the macroscopic views (Figure 5A and B). The H&E-stained section of the porcine block coagulated with the FlushKnife-BT showed that coagulation with the F1-10 method spread wider and deeper to the surrounding tissues compared to that with the S method (Figure 5C).

DISCUSSION

ESD has enabled an endoscopic *en bloc* resection of large tumors in the esophagus, stomach, and colorectum. However, intraoperative bleeding remains one of the major complications during ESD, although

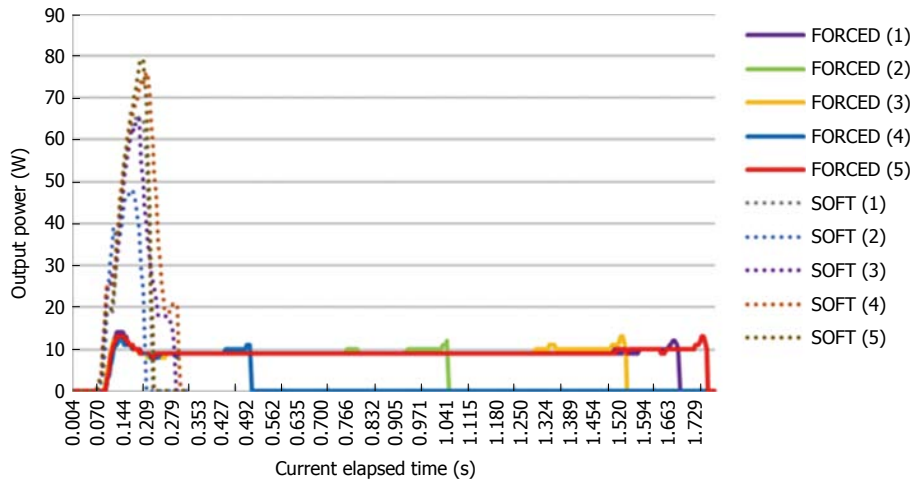


Figure 4 Time-dependent HF power in F1-10 and S methods measured by the VIO DOKU.

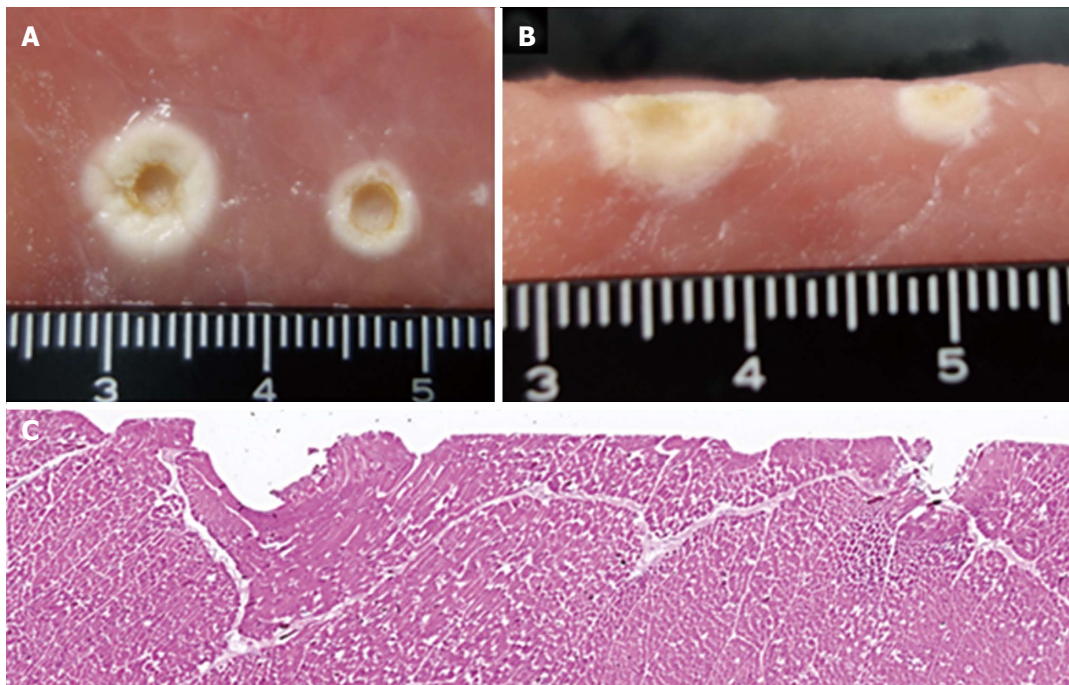


Figure 5 Macroscopic view after coagulation by the ball electrode with a 3-mm tip and microscopic view after coagulation by the FlushKnife-BT in the porcine block. A: Macroscopic view of the front surface after coagulation using the ball electrode with a 3-mm tip. The coagulation at the left and right is the result of the F1-10 and S methods, respectively; B: Macroscopic view of a transverse section after coagulation using the ball electrode with a 3-mm tip; C: Microscopic view of the hematoxylin-eosin staining after coagulation by the FlushKnife-BT 2.5 mm. The coagulation at the left and right is the result of the F1-10 and S methods, respectively.

bleeding improved to some degree by the development of devices, such as endoknives, hemostatic forceps, and electrical surgical units^[14]. In actual practice, it sometimes takes a lot of time to stop bleeding in ESD; once the lesion is bleeding, it is difficult to recognize the submucosal layers as these are blood-stained, making the procedure more difficult to perform^[15]. The prevention of intraoperative bleeding is important to achieve a safe ESD. The FlushKnife-BT, which has a ball tip on top of the needle, improved the hemostasis effect compared with the conventional needle-type

FlushKnife because its round ball tip compressed the vessels widely and decreased the current density^[13]. However, the FlushKnife-BT still pose a bleeding risk as the vessels are cut before adequate coagulation.

It was suggested that the S method is useful for pre-coagulation. Soft coagulation regulates the peak voltage below 200 Vp, and it can dehydrate the vessels without any spark or rupture. Therefore, this mode was thought to be appropriate for this technique. However, its efficacy was insufficient, especially for large vessels in the upper and middle thirds of the

Table 3 Rates of bleeding after vessel-sealing with endoknife compression for all vessels and large vessels

	S method	F1-10 method	P ² value	OR	95%CI
Rate of bleeding	16.3% (8/49)	4.8% (3/62)	0.058	3.84	0.96-15.34
Rate of large vessel bleeding ¹	26.9% (7/26)	3.4% (1/29)	0.021	10.32	1.17-90.78

¹Large vessels were defined as those with > 2 mm diameter; ²Fisher's exact test was used.

Table 4 Electrical condition using the FlushKnife-BT in the porcine *ex vivo* model analyzed by the VIO DOKU

	FlushKnife-BT 2.5 mm	
	S method	F1-10 method
Median peak voltage (Vp)	172 (170-173)	560 (538-587)
Median current elapse time (s)	0.22 (0.20-0.30)	1.54 (0.50-1.77)
Median total electric energy (W)	6.34 (3.9-8.67)	12.5 (3.47-13.8)

stomach^[16]. We introduced this technique using the F1-10 setting as aforementioned by modifying the peak voltage and power setting, and the usefulness of the S and F1-10 methods were compared in this study.

In the clinical study, the bleeding rates after vessel processing for large vessels were 26.9% and 3.4% in the S and F1-10 methods, respectively, which were significantly different. The median current elapsed time was longer, and the width and depth of coagulation were wider and deeper in the F1-10 method than in the S method in the *ex vivo* study.

Forced coagulation mode usually generates the sparks and fulguration accompanying the cutting function added to the coagulation. It was known that this mode was unsuitable for the endoknife precoagulation. However, when the peak voltage and electrical power in the forced coagulation were decreased to the level of the F1-10 setting, the current elapsed time became much longer than that of the S method and sparks were not observed in both ESD and experiment with the porcine tissue.

While the electrode heat dehydrates the tissues and increases tissue resistance, the electric current gradually decreased and turned off. This mechanism can be explained by Ohm's law, in which voltage (U) = resistance (R) × electric current (I). Forced coagulation creates a higher voltage than that of soft coagulation and could keep the current flow much longer even after the tissue resistance increased, as shown in the experiment. It can imply that under the generation of Joule's heat without sparks, the coagulation range is decided by the current elapsed time. For this mechanism, the F1-10 method achieved a wider and deeper coagulation area than the S method.

Our study showed the usefulness of the F1-10 method from the point of superior coagulation ability during ESD. On the other hand, this method may have the risk of perforation due to deep coagulation. However, we did not experience intraoperative perforation using the F1-10 method even during

ESD in the esophagus and colorectum, which have thinner walls than the stomach. Further, no obvious increase in the postoperative perforation rate has been observed since the induction of the F1-10 method in our facility until the present. Such finding may be explained by the vessel-sealing with endoknife compression technique, which applies electrical energy after compressing and pulling the vessel apart from the muscle layer. Its concept is essentially the same as that of coagulation using hemostatic forceps. However, it must be emphasized that too much coagulation on the muscularis propria should be avoided to prevent deep coagulation. This caution is similar as with the hemostatic forceps should be used^[17].

Recently, one research reported that the bleeding rate after endoknife precoagulation was not significantly different between the use of the F1-10 method and the hemostatic forceps with the soft coagulation during gastric ESD; further, the use of F1-10 did not result in serious intraoperative bleeding and reduced the frequency of using hemostatic forceps^[18]. The F1-10 method was demonstrated to be as safe and effective for bleeding prevention as hemostatic forceps.

However, there were some limitations in our study. First, the vessels processed by hemostatic forceps were excluded from the analysis (12 in the S method and one in the F1-10 method); it has a potential to be a selection bias, however, those included were only the vessels larger than the ones for which precoagulation was not accomplished. Therefore, even if endoknife precoagulation was attempted, it was highly expected that it would fail. Although there is no research that compares the precoagulation effectiveness between the S-method and hemostatic forceps method yet, it is empirically known that the coagulation ability of hemostatic forceps is stronger than the S method; further, precoagulation using hemostatic forceps can reduce the bleeding risk^[19,20]. If there was a selection bias, it would be for the advantage of the S method in this study. However, the result still suggested that the F1-10 method was superior to the S method. Second, the clinical data shown are achieved under the use of the FlushKnife-BT, which has a ball tip and is capable of firm vessel compression. This FlushKnife-BT method should not be simply applied when precoagulation with different types of ESD knives is performed. The ideal generator setting should be investigated for each bleeding control strategy and for different types of devices. Further, only a skilled endoscopist performed

the ESD in the present study. The generalizability of the result in this study remains uncertain; however, we believe that if proper precoagulation procedure is conducted, similar results could be obtained.

In conclusion, the vessel-sealing with endoknife compression technique using the F1-10 method is better than that using the S method, especially for large vessels. Thus, the F1-10 method is considered to promote a safer and better quality ESD.

ACKNOWLEDGMENTS

We would like to thank Masaki Yamazaki from AMCO Incorporated (Tokyo, Japan) for the review of terminology matters, and AMCO Incorporated (Tokyo, Japan) for supporting the VIO DOKU.

COMMENTS

Background

Bleeding control is one of the most important factors to successful and safe endoscopic submucosal dissection (ESD). The authors reported that the endoscopic precoagulation technique using the soft coagulation mode (S-method) is effective. However, the S method is insufficient for large vessels, and they usually have used hemostatic forceps for preventing bleeding. They found that the forced coagulation mode with low high-frequency power setting (F1-10 method) can exhibit a precoagulation function. F1-10 method is suggested to be useful for large vessel.

Research frontiers

This studies first reported that the usefulness of the forced coagulation mode with low high-frequency power setting for the endoscopic vessel-sealing. This mode setting suggested a strong coagulation effect without rupturing the vessels compared with the conventional soft coagulation method in clinical procedure and *ex vivo* model.

Innovations and breakthroughs

The use of F1-10 method can lead to not only the prevention of bleeding but also cost savings and shortening ESD procedure.

Applications

This study suggested that F1-10 method achieve a stronger hemostatic effect than the S method in clinical procedures and *ex vivo* models.

Terminology

The soft coagulation mode and forced coagulation mode are functions of ERBE VIO system. The Soft coagulation regulates the peak voltage below 200 Vp. The forced coagulation utilizes a high output voltage > 200 Vp with an interrupted waveform, and usually generates the sparks and fulguration accompanying the cutting function added to the coagulation. However, the High-frequency power is reduced to a quite low level, it can avoid generating sparks. Therefore, the authors suggested the usefulness of the forced coagulation mode with low high-frequency power setting in clinical procedures and *ex vivo* models.

Peer-review

This is a paper on the timely topic, comparing S method and F1-10 method. Authors indicated that F1-10 method is suggested to be useful for large vessel.

REFERENCES

- 1 Wu MP, Ou CS, Chen SL, Yen EY, Rowbotham R. Complications and recommended practices for electrosurgery in laparoscopy. *Am*

- J Surg* 2000; **179**: 67-73 [PMID: 10737583]
- 2 Alkatout I, Schollmeyer T, Hawaldar NA, Sharma N, Mettler L. Principles and safety measures of electrosurgery in laparoscopy. *JSLs* 2012; **16**: 130-139 [PMID: 22906341 DOI: 10.4293/108680812X13291597716348]
- 3 Odell RC. Surgical complications specific to monopolar electrosurgical energy: engineering changes that have made electrosurgery safer. *J Minim Invasive Gynecol* 2013; **20**: 288-298 [PMID: 23659749 DOI: 10.1016/j.jmig.2013.01.015]
- 4 Sutton C, Abbott J. History of power sources in endoscopic surgery. *J Minim Invasive Gynecol* 2013; **20**: 271-278 [PMID: 23659747 DOI: 10.1016/j.jmig.2013.03.001]
- 5 Feldman LS, Fuchshuber PR, Jones DB. The SAGES manual on the fundamental use of surgical energy (FUSE). Springer, New York, 2012
- 6 Taheri A, Mansoori P, Sandoval LF, Feldman SR, Pearce D, Williford PM. Electrosurgery: part I. Basics and principles. *J Am Acad Dermatol* 2014; **70**: 591.e1-e14; quiz 605-606 [PMID: 24629361 DOI: 10.1016/j.jaad.2013.09.056]
- 7 Morris ML, Tucker RD, Baron TH, Song LM. Electrosurgery in gastrointestinal endoscopy: principles to practice. *Am J Gastroenterol* 2009; **104**: 1563-1574 [PMID: 19491874 DOI: 10.1038/ajg.2009.105]
- 8 Ono H, Kondo H, Gotoda T, Shirao K, Yamaguchi H, Saito D, Hosokawa K, Shimoda T, Yoshida S. Endoscopic mucosal resection for treatment of early gastric cancer. *Gut* 2001; **48**: 225-229 [PMID: 11156645]
- 9 Reidenbach HD, Buess G. Ancillary technology: electrocautery, thermocoagulation and laser. Springer Berlin Heidelberg, Berlin, 1992.
- 10 Sakuragi T, Okazaki Y, Mitsuoka M, Itoh T. Dramatic hemostasis of the transected pulmonary artery model using SOFT COAG electrosurgical output. *Interact Cardiovasc Thorac Surg* 2008; **7**: 764-766 [PMID: 18573845 DOI: 10.1510/icvts.2008.177923]
- 11 Sakuragi T, Ohma H, Ohteki H. Efficacy of SOFT COAG for intraoperative bleeding in thoracic surgery. *Interact Cardiovasc Thorac Surg* 2009; **9**: 767-768 [PMID: 19713242 DOI: 10.1510/icvts.2009.212696]
- 12 Tanaka S, Toyonaga T, Morita Y. Endoscopic vessel sealing: a novel endoscopic precoagulation technique for blood vessels during endoscopic submucosal dissection. *Dig Endosc* 2013; **25**: 341-342 [PMID: 23461279 DOI: 10.1111/den.12045]
- 13 Toyonaga T, Man-I M, Fujita T, Nishino E, Ono W, Morita Y, Sanuki T, Masuda A, Yoshida M, Kutsumi H, Inokuchi H, Azuma T. The performance of a novel ball-tipped Flush knife for endoscopic submucosal dissection: a case-control study. *Aliment Pharmacol Ther* 2010; **32**: 908-915 [PMID: 20839389]
- 14 ASGE Technology Committee., Maple JT, Abu Dayyeh BK, Chauhan SS, Hwang JH, Komanduri S, Manfredi M, Konda V, Murad FM, Siddiqui UD, Banerjee S. Endoscopic submucosal dissection. *Gastrointest Endosc* 2015; **81**: 1311-1325 [PMID: 25796422 DOI: 10.1016/j.gie.2014.12.010]
- 15 Yamamoto S, Uedo N, Ishihara R, Kajimoto N, Ogiyama H, Fukushima Y, Yamamoto S, Takeuchi Y, Higashino K, Iishi H, Tatsuta M. Endoscopic submucosal dissection for early gastric cancer performed by supervised residents: assessment of feasibility and learning curve. *Endoscopy* 2009; **41**: 923-928 [PMID: 19802773 DOI: 10.1055/s-0029-1215129]
- 16 Toyonaga T, Nishino E, Hirooka T, Ueda C, Noda K. Intraoperative bleeding in endoscopic submucosal dissection in the stomach and strategy for prevention and treatment. *Dig Endosc* 2006; **18**: S123-127 [DOI: 10.1111/j.1443-1661.2006.00645.x]
- 17 Mann NS, Mann SK, Alam I. The safety of hot biopsy forceps in the removal of small colonic polyps. *Digestion* 1999; **60**: 74-76 [PMID: 9892802]
- 18 Horikawa Y, Toyonaga T, Mizutamari H, Mimori N, Kato Y, Fushimi S, Okubo S. Feasibility of Knife-Coagulated Cut in Gastric Endoscopic Submucosal Dissection: A Case-Control

Study. *Digestion* 2016; **94**: 192-198 [PMID: 27931026 DOI: 10.1159/000450994]

- 19 **Toyonaga T**, Nishino E, Man-I M, East JE, Azuma T. Principles of quality controlled endoscopic submucosal dissection with appropriate dissection level and high quality resected specimen.

Clin Endosc 2012; **45**: 362-374 [PMID: 23251883 DOI: 10.5946/ce.2012.45.4.362]

- 20 **Park CH**, Lee SK. Preventing and controlling bleeding in gastric endoscopic submucosal dissection. *Clin Endosc* 2013; **46**: 456-462 [PMID: 24143302 DOI: 10.5946/ce.2013.46.5.456]

P- Reviewer: Xu MD **S- Editor:** Qi Y **L- Editor:** A
E- Editor: Zhang FF





Published by **Baishideng Publishing Group Inc**
7901 Stoneridge Drive, Suite 501, Pleasanton, CA 94588, USA
Telephone: +1-925-223-8242
Fax: +1-925-223-8243
E-mail: bpgoffice@wjgnet.com
Help Desk: <http://www.f6publishing.com/helpdesk>
<http://www.wjgnet.com>



ISSN 1007-9327



9 771007 932045