

World Journal of *Gastroenterology*

World J Gastroenterol 2017 July 28; 23(28): 5041-5256



**EDITORIAL**

- 5041** Colorectal cancer in young adults: A difficult challenge

Campos FG

- 5045** Precision medicine: In need of guidance and surveillance

Lin JZ, Long JY, Wang AQ, Zheng Y, Zhao HT

REVIEW

- 5051** Barrett's oesophagus: Current controversies

Amadi C, Gatenby P

- 5068** Gastrointestinal neuroendocrine peptides/amines in inflammatory bowel disease

El-Salhy M, Solomon T, Hausken T, Gilja OH, Hatlebakk JG

- 5086** Colorectal cancer screening: An updated review of the available options

Issa IA, Noureddine M

- 5097** Therapeutic potential of flavonoids in inflammatory bowel disease: A comprehensive review

Salaritabar A, Darvishi B, Hadjiakhoondi F, Manayi A, Sureda A, Nabavi SF, Fitzpatrick LR, Nabavi SM, Bishayee A

ORIGINAL ARTICLE**Basic Study**

- 5115** Myo-inositol reduces β -catenin activation in colitis

Bradford EM, Thompson CA, Goretsky T, Yang GY, Rodriguez LM, Li L, Barrett TA

- 5127** Involvement of CRF2 signaling in enterocyte differentiation

Ducarouge B, Pelissier-Rota M, Powell R, Buisson A, Bonaz B, Jacquier-Sarlin M

- 5146** Bone marrow-derived monocyte infusion improves hepatic fibrosis by decreasing osteopontin, TGF- β 1, IL-13 and oxidative stress

de Souza VCA, Pereira TA, Teixeira VW, Carvalho H, de Castro MCAB, D'assunção CG, de Barros AF, Carvalho CL, de Lorena VMB, Costa VMA, Teixeira AAC, Figueiredo RCBQ, de Oliveira SA

- 5158** Single amino acid mutation of SR-BI decreases infectivity of hepatitis C virus derived from cell culture in a cell culture model

Gao R, Gao W, Xu G, Xu J, Ren H

- 5167 Fibroblast-derived CXCL12/SDF-1 α promotes CXCL6 secretion and co-operatively enhances metastatic potential through the PI3K/Akt/mTOR pathway in colon cancer

Ma JC, Sun XW, Su H, Chen Q, Guo TK, Li Y, Chen XC, Guo J, Gong ZQ, Zhao XD, Qi JB

Case Control Study

- 5179 Association between *CYP24A1* polymorphisms and the risk of colonic polyps and colon cancer in a Chinese population

Chen XQ, Mao JY, Li WB, Li J, Yang H, Qian JM, Li JN

Retrospective Cohort Study

- 5187 Clinical significance of glycemic parameters on venous thromboembolism risk prediction in gastrointestinal cancer

Guadagni F, Riondino S, Formica V, Del Monte G, Morelli AM, Lucchetti J, Spila A, D'Alessandro R, Della-Morte D, Ferroni P, Roselli M

- 5196 Sex-dependent difference in the effect of metformin on colorectal cancer-specific mortality of diabetic colorectal cancer patients

Park JW, Lee JH, Park YH, Park SJ, Cheon JH, Kim WH, Kim TI

Retrospective Study

- 5206 Sex-influenced association of non-alcoholic fatty liver disease with colorectal adenomatous and hyperplastic polyps

Chen QF, Zhou XD, Sun YJ, Fang DH, Zhao Q, Huang JH, Jin Y, Wu JS

Observational Study

- 5216 Development and validation of a simple and multifaceted instrument, GERD-TEST, for the clinical evaluation of gastroesophageal reflux and dyspeptic symptoms

Nakada K, Matsuhashi N, Iwakiri K, Oshio A, Joh T, Higuchi K, Haruma K

- 5229 Modified B-ultrasound method for measurement of antral section only to assess gastric function and guide enteral nutrition in critically ill patients

Liu Y, Gao YK, Yao L, Li L

Prospective Study

- 5237 Chronic liver failure-consortium acute-on-chronic liver failure and acute decompensation scores predict mortality in Brazilian cirrhotic patients

Picon RV, Bertol FS, Tovo CV, de Mattos ÁZ

CASE REPORT

- 5246 Refractory hepatic encephalopathy in a patient with hypothyroidism: Another element in ammonia metabolism

Díaz-Fontenla F, Castillo-Pradillo M, Díaz-Gómez A, Ibáñez-Samaniego L, Gancedo P, Guzmán-de-Villoria JA, Fernández-García P, Bañares-Cañizares R, García-Martínez R

- 5253** Endoscopic occlusion with silicone spigots for the closure of refractory esophago-bronchiole fistula after esophagectomy

Uesato M, Kono T, Akutsu Y, Murakami K, Kagaya A, Muto Y, Nakano A, Aikawa M, Tamachi T, Amagai H, Arasawa T, Muto Y, Matsubara H

Contents

World Journal of Gastroenterology
Volume 23 Number 28 July 28, 2017

ABOUT COVER

Editorial board member of *World Journal of Gastroenterology*, Edoardo G Giannini, FACC, MD, PhD, Assistant Professor, Department of Internal Medicine, University of Genoa, 16132 Genova, Italy

AIMS AND SCOPE

World Journal of Gastroenterology (*World J Gastroenterol*, *WJG*, print ISSN 1007-9327, online ISSN 2219-2840, DOI: 10.3748) is a peer-reviewed open access journal. *WJG* was established on October 1, 1995. It is published weekly on the 7th, 14th, 21st, and 28th each month. The *WJG* Editorial Board consists of 1375 experts in gastroenterology and hepatology from 68 countries.

The primary task of *WJG* is to rapidly publish high-quality original articles, reviews, and commentaries in the fields of gastroenterology, hepatology, gastrointestinal endoscopy, gastrointestinal surgery, hepatobiliary surgery, gastrointestinal oncology, gastrointestinal radiation oncology, gastrointestinal imaging, gastrointestinal interventional therapy, gastrointestinal infectious diseases, gastrointestinal pharmacology, gastrointestinal pathophysiology, gastrointestinal pathology, evidence-based medicine in gastroenterology, pancreatology, gastrointestinal laboratory medicine, gastrointestinal molecular biology, gastrointestinal immunology, gastrointestinal microbiology, gastrointestinal genetics, gastrointestinal translational medicine, gastrointestinal diagnostics, and gastrointestinal therapeutics. *WJG* is dedicated to become an influential and prestigious journal in gastroenterology and hepatology, to promote the development of above disciplines, and to improve the diagnostic and therapeutic skill and expertise of clinicians.

INDEXING/ABSTRACTING

World Journal of Gastroenterology (*WJG*) is now indexed in Current Contents[®]/Clinical Medicine, Science Citation Index Expanded (also known as SciSearch[®]), Journal Citation Reports[®], Index Medicus, MEDLINE, PubMed, PubMed Central and Directory of Open Access Journals. The 2017 edition of Journal Citation Reports[®] cites the 2016 impact factor for *WJG* as 3.365 (5-year impact factor: 3.176), ranking *WJG* as 29th among 79 journals in gastroenterology and hepatology (quartile in category Q2).

FLYLEAF

I-IX Editorial Board

EDITORS FOR THIS ISSUE

Responsible Assistant Editor: *Xiang Li*
Responsible Electronic Editor: *Fen-Fen Zhang*
Proofing Editor-in-Chief: *Lian-Sheng Ma*

Responsible Science Editor: *Yuan Qi*
Proofing Editorial Office Director: *Jin-Lei Wang*

NAME OF JOURNAL
World Journal of Gastroenterology

ISSN
ISSN 1007-9327 (print)
ISSN 2219-2840 (online)

LAUNCH DATE
October 1, 1995

FREQUENCY
Weekly

EDITORS-IN-CHIEF
Damian Garcia-Olmo, MD, PhD, Doctor, Professor, Surgeon, Department of Surgery, Universidad Autonoma de Madrid; Department of General Surgery, Fundacion Jimenez Diaz University Hospital, Madrid 28040, Spain

Stephen C Strom, PhD, Professor, Department of Laboratory Medicine, Division of Pathology, Karolinska Institutet, Stockholm 141-86, Sweden

Andrzej S Tarnawski, MD, PhD, DSc (Med), Professor of Medicine, Chief Gastroenterology, VA Long Beach Health Care System, University of California, Irvine, CA, 5901 E. Seventh Str., Long Beach,

CA 90822, United States

EDITORIAL BOARD MEMBERS
All editorial board members resources online at <http://www.wjgnet.com/1007-9327/editorialboard.htm>

EDITORIAL OFFICE
Jin-Lei Wang, Director
Yuan Qi, Vice Director
Ze-Mao Gong, Vice Director
World Journal of Gastroenterology
Baishideng Publishing Group Inc
7901 Stoneridge Drive, Suite 501,
Pleasanton, CA 94588, USA
Telephone: +1-925-2238242
Fax: +1-925-2238243
E-mail: editorialoffice@wjgnet.com
Help Desk: <http://www.f6publishing.com/helpdesk>
<http://www.wjgnet.com>

PUBLISHER
Baishideng Publishing Group Inc
7901 Stoneridge Drive, Suite 501,
Pleasanton, CA 94588, USA
Telephone: +1-925-2238242
Fax: +1-925-2238243
E-mail: bpgoffice@wjgnet.com
Help Desk: <http://www.f6publishing.com/helpdesk>

<http://www.wjgnet.com>

PUBLICATION DATE
July 28, 2017

COPYRIGHT
© 2017 Baishideng Publishing Group Inc. Articles published by this Open-Access journal are distributed under the terms of the Creative Commons Attribution Non-commercial License, which permits use, distribution, and reproduction in any medium, provided the original work is properly cited, the use is non commercial and is otherwise in compliance with the license.

SPECIAL STATEMENT
All articles published in journals owned by the Baishideng Publishing Group (BPG) represent the views and opinions of their authors, and not the views, opinions or policies of the BPG, except where otherwise explicitly indicated.

INSTRUCTIONS TO AUTHORS
Full instructions are available online at <http://www.wjgnet.com/bpg/gerinfo/204>

ONLINE SUBMISSION
<http://www.f6publishing.com>

Endoscopic occlusion with silicone spigots for the closure of refractory esophago-bronchiole fistula after esophagectomy

Masaya Uesato, Tsuguaki Kono, Yasunori Akutsu, Kentarou Murakami, Akiko Kagaya, Yorihiro Muto, Akira Nakano, Mizuho Aikawa, Tomohide Tamachi, Hiroyuki Amagai, Takahiro Arasawa, Yasuhide Muto, Hisahiro Matsubara

Masaya Uesato, Tsuguaki Kono, Yasunori Akutsu, Kentarou Murakami, Akiko Kagaya, Yorihiro Muto, Akira Nakano, Mizuho Aikawa, Tomohide Tamachi, Hiroyuki Amagai, Takahiro Arasawa, Yasuhide Muto, Hisahiro Matsubara, Department of Frontier Surgery, Chiba University Graduate School of Medicine, Chiba 260-8677, Japan

Author contributions: Uesato M wrote the manuscript; Uesato M, Kono T, Akutsu Y, Murakami K, Kagaya A, Muto Y, Nakano A, Aikawa M, Tamachi T, Amagai H, Arasawa T, Muto Y diagnosed and treated; all authors discussed the results and commented on the manuscript.

Informed consent statement: The patient involved in this study gave his written informed consent authorizing use and disclosure of his protected health information.

Conflict-of-interest statement: The authors state that they have no conflict of interest regarding this case report.

Open-Access: This article is an open-access article which was selected by an in-house editor and fully peer-reviewed by external reviewers. It is distributed in accordance with the Creative Commons Attribution Non Commercial (CC BY-NC 4.0) license, which permits others to distribute, remix, adapt, build upon this work non-commercially, and license their derivative works on different terms, provided the original work is properly cited and the use is non-commercial. See: <http://creativecommons.org/licenses/by-nc/4.0/>

Manuscript source: Unsolicited manuscript

Correspondence to: Masaya Uesato, MD, Department of Frontier Surgery, Chiba University Graduate School of Medicine, 1-8-1 Inohana, Chuo-ku, Chiba-shi, Chiba 260-8670, Japan. uesato@faculty.chiba-u.jp
Telephone: +81-43-2262110
Fax: +81-43-2262113

Received: February 3, 2017

Peer-review started: February 9, 2017

First decision: April 21, 2017

Revised: May 4, 2017

Accepted: June 12, 2017

Article in press: June 12, 2017

Published online: July 28, 2017

Abstract

A 65-year-old man with cT1bN0M0 stage I middle thoracic esophageal cancer underwent subtotal esophagectomy and gastric tube reconstruction through the posterior mediastinal route after preoperative carbon-ion radiotherapy and chemotherapy in a clinical trial. Anastomotic leakage occurred, but it spontaneously improved. At six months after the operation, he was rehospitalized with a cough and dysphagia. An esophago-bronchiole fistula and stenosis of the gastric tube were observed. He first underwent stent placement in the gastric tube. Two weeks later, the syringeal epithelium was burned by argon plasma coagulation after stent removal. Endoscopic occlusion was then performed for the fistula with two guidewire-assisted silicone spigots. Two weeks later, he was discharged on an oral diet, and he has not developed recurrence of the fistula or cancer for three years. This is the first report of endoscopic occlusion with a guidewire-assisted silicone spigot through the esophagus.

Key words: Endobronchial Watanabe spigot; Guidewire; Fistula; Leakage; Esophagectomy; Esophageal cancer; Endoscopic occlusion

© **The Author(s) 2017.** Published by Baishideng Publishing Group Inc. All rights reserved.

Core tip: Anastomotic leakage, which is a complication of esophagectomy, sometimes causes a refractory

fistula. An esophago-bronchiole fistula (EBF) is a relatively rare but serious complication. We performed endoscopic occlusion using an endobronchial Watanabe spigot (EWS), a type of silicone bronchial blocker that is widely used in the respiratory field to treat pulmonary air leak, hemoptysis and bronchopleural fistula. We herein report a new and unique technique using the EWS to close a refractory EBF after esophagectomy. This report is the first to show that endoscopic occlusion using the EWS through the esophagus can simply and safely repair a refractory fistula.

Uesato M, Kono T, Akutsu Y, Murakami K, Kagaya A, Muto Y, Nakano A, Aikawa M, Tamachi T, Amagai H, Arasawa T, Muto Y, Matsubara H. Endoscopic occlusion with silicone spigots for the closure of refractory esophago-bronchiole fistula after esophagectomy. *World J Gastroenterol* 2017; 23(28): 5253-5256 Available from: URL: <http://www.wjgnet.com/1007-9327/full/v23/i28/5253.htm> DOI: <http://dx.doi.org/10.3748/wjg.v23.i28.5253>

INTRODUCTION

Anastomotic leakage, which is a complication of esophagectomy, sometimes causes a refractory fistula^[1]. An esophago-bronchiole fistula (EBF) is a relatively rare but serious complication. Conventional therapy, such as hemoclippling, fibrin glue and stenting, are often performed^[2-4]. However, surgical repair may be ultimately performed. We herein report a new and unique technique using an endobronchial Watanabe spigot (EWS) through the esophagus to close a refractory EBF after esophagectomy.

CASE REPORT

A 65-year-old man with cT1bN0M0 stage I middle thoracic esophageal cancer underwent subtotal esophagectomy and gastric tube reconstruction through the posterior mediastinal route after preoperative carbon-ion radiotherapy and chemotherapy in a clinical trial. Anastomotic leakage occurred, but it spontaneously improved. There was no residual cancer in the resected specimen. At six months after the operation, he was rehospitalized with a cough and dysphagia. An EBF at the right B1 bronchiole and stenosis of the gastric tube were observed (Figure 1). The region of the anastomotic leakage and the region of EBF were same. The patient first underwent full-covered stent (Flexella-J; ELLA-CS, s.r.o., Hradec Kralove, Czech Republic) placement in the gastric tube under fluoroscopic guidance. Two weeks later, we recognized the release of the stenosis with the persistent EBF after the stent removal. Hemoclippling was performed for the fistula but failed. We next burned the syringeal epithelium by argon plasma coagulation (Figure 2). At the same time, endoscopic occlusion was performed. Under fluoroscopic guidance,



Figure 1 The radiographic image showed an esophago-bronchiole fistula from the anastomose to the right B1 bronchiole (arrow) and approximately 5 cm stenosis of the upper gastric tube (arrowhead).

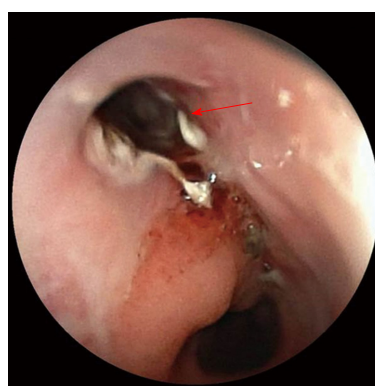


Figure 2 The epithelium of the esophago-bronchiole fistula was burned using argon plasma coagulation (arrow).

a 0.035-inch guidewire (Jagwire; Boston Scientific, Natick, MA, United States) was inserted into the EBF through an ultrathin endoscope (EG-580NW; FUJIFILM, Tokyo, Japan). After the endoscope was removed, a 5-mm endobronchial Watanabe spigot (EWS; Novatech, La Ciotat, France) was penetrated through its long axis using the guidewire (Figure 3A). After inserting a snaretube (MAJ-10; OLYMPUS, Tokyo, Japan) to the endoscope channel, the guidewire was retrogradely passed to the endoscope through the tube. Under fluoroscopic and endoscopic guidance, the EWS was wedged into the EBF (Figure 3B). Another 7-mm EWS was additionally inserted in a similar manner. The image just after the insertion showed the fistula occluded by the EWS (Figure 4A and B). Two weeks later, he was discharged on an oral diet, and he has not developed recurrence of the fistula or cancer for three years (Figure 5A-C).

DISCUSSION

A new and unique technique using a guidewire-assisted EWS through the esophagus proved useful for closing a refractory EBF after esophagectomy.

The patient in the present case had not only an EBF but also stenosis of the upper gastric tube. Upper

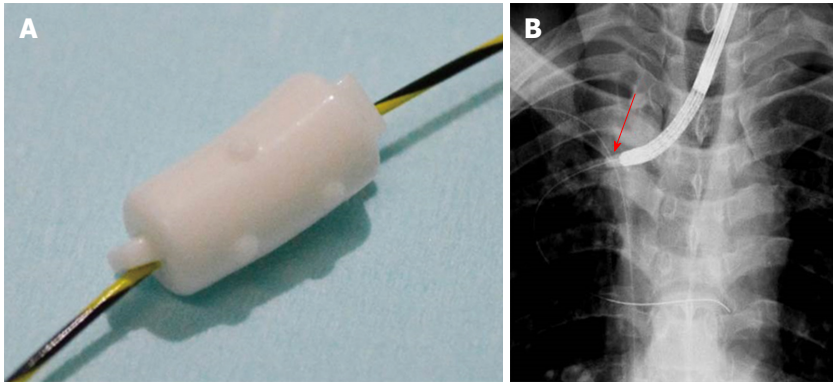


Figure 3 The endobronchial Watanabe spigot was penetrated through its long axis by the guidewire (A) (Push and Slide method^[9]; B: Under fluoroscopic and endoscopic guidance, the endobronchial Watanabe spigot (arrow) was wedged into the esophago-bronchiole fistula.

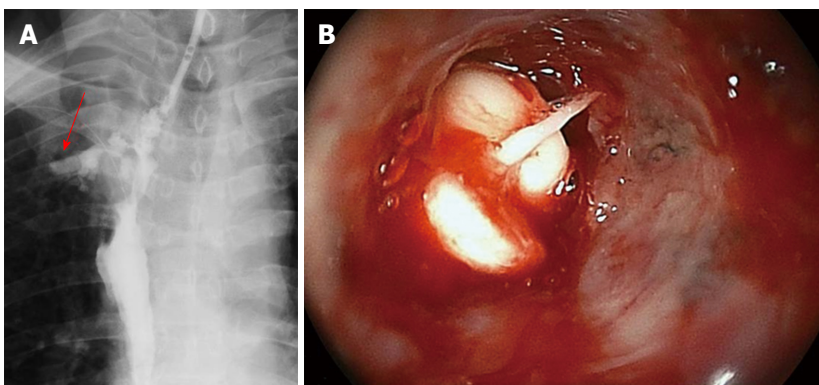


Figure 4 The radiographic image just after the insertion showed the fistula occluded by the endobronchial Watanabe spigot (A, arrow); B: In the endoscopic image just after occlusion, it was confirmed that the endobronchial Watanabe spigot is in the target fistula.

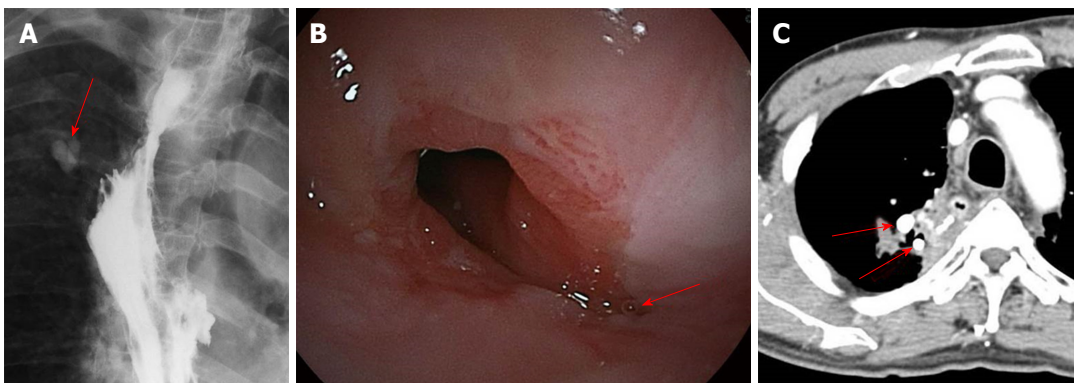


Figure 5 Since the endoscopic occlusion, the patient has not developed recurrence of the fistula for three years. Two endobronchial Watanabe spigots remain (A, arrow); B: In the endoscopic image passed for three years after occlusion, the fistula has disappeared; C: In computed tomography passed for three years after occlusion, two endobronchial Watanabe spigots remain (arrow).

gastric tube is the periphery of the blood flow, had approximately 5 cm stenosis. We therefore suspect that the cause of the fistula was the anastomotic leakage occurred by ischemia. A refractory fistula commuting with the airway system often causes pneumonia and respiratory failure. A number of minimally invasive treatments have been proposed for treating a refractory fistula, including hemoclippling^[2], stenting^[4], polyglycolic acid sheets and fibrin glue^[3] and over-the-scope clipping^[4]. In addition, since these

therapies failed in the present case, surgery with a musculo-cutaneous flap was considered.

Before performing invasive treatment, we attempted endoscopic occlusion with an EWS, a type of silicone bronchial blocker^[5] that is widely used in the respiratory field to treat pulmonary air leak^[6], hemoptysis^[7] and bronchopleural fistula^[8]. We selected EWS occlusion through the esophagus to blockade the nearest portion of the EBF. The spigot is typically grasped with forceps and inserted into the affected bronchus using a flexible

bronchoscope^[5]. However, because fistulas of the digestive system are more irregular than those in the tracheal route, it can be difficult to insert the EWS using forceps. Therefore, in the present case, a guidewire was first inserted, and then the EWS was placed along the guidewire.

In 2003, Miyazawa *et al.*^[9] first reported the "Push and Slide" method in Japanese. Recently, the usefulness of endobronchial occlusion for massive hemoptysis with a guidewire-assisted custom-made silicone spigot was reported^[7]. We recommend this method, as the EWS can be inserted precisely. There are three kinds of size in the EWS (short axis/long axis: 5/8.5 mm, 6/10.5, 7/12.5)^[6]. A fistula to the respiratory tract exceeding its size seems to be out of the indication. In an esophago-bronchial or tracheal fistula, the spigot may fall into the airway. Therefore, the best indication of the fistula could be occluded by the EWS is an esophago-bronchiole fistula has the length longer than approximately 10 mm. In addition, coagulating the syringeal epithelium by argon plasma coagulation before the EWS insertion might accelerate the occlusion of the EBF^[2].

In conclusion, we successfully performed EWS occlusion through the esophagus for an EBF without complications. We therefore recommend EWS occlusion as a potential treatment for a refractory EBF after esophagectomy. This is the first report of the successful closure of a refractory fistula, although EWS occlusion through the gastrointestinal tract needs further exploration.

COMMENTS

Case characteristics

A 65-year-old man with esophageal cancer underwent subtotal esophagectomy and gastric tube reconstruction. At six months after the operation, he was rehospitalized with a cough and dysphagia.

Clinical diagnosis

An esophago-bronchiole fistula was observed.

Differential diagnosis

Aspiration pneumonia.

Imaging diagnosis

An esophago-bronchiole fistula at the right B1 bronchiole and stenosis of the gastric tube were observed.

Treatment

He first underwent stent placement in the gastric tube. Two weeks later, the syringeal epithelium was burned by argon plasma coagulation after stent

removal. Endoscopic occlusion was then performed for the fistula with two guidewire-assisted silicone spigots.

Experiences and lessons

A new and unique technique using a guidewire-assisted endobronchial Watanabe spigot through the esophagus proved useful for closing a refractory esophago-bronchiole fistula after esophagectomy.

Peer-review

The authors showed a new and unique technique using a guidewire-assisted endobronchial Watanabe spigot through the esophagus proved useful for closing a refractory esophago-bronchial fistula after esophagectomy. The technique is new and original. The text is well-written.

REFERENCES

- 1 **Yamana I**, Takeno S, Yamada T, Sato K, Hashimoto T, Yamashita Y. The Risk Factors for Refractory Fistula after Esophagectomy with Gastric Tube Reconstruction in Patients with Esophageal Cancer. *Dig Surg* 2017; **34**: 18-24 [PMID: 27336465 DOI: 10.1159/000447603]
- 2 **van Bodegraven AA**, Kuipers EJ, Bonenkamp HJ, Meuwissen SG. Esophagopleural fistula treated endoscopically with argon beam electrocoagulation and clips. *Gastrointest Endosc* 1999; **50**: 407-409 [PMID: 10462666 DOI: 10.1053/ge.1999.v50.97234]
- 3 **Matsuura N**, Hanaoka N, Ishihara R, Sugimura K, Motoori M, Miyata H, Yano M. Polyglycolic acid sheets for closure of refractory esophago-pulmonary fistula after esophagectomy. *Endoscopy* 2016; **48** Suppl 1 UCTN: E78-E79 [PMID: 26951471 DOI: 10.1055/s-0042-102452]
- 4 **Bertani H**, Grande G, Mirante VG, Franco I, Mangiafico S, Manta R, Conigliaro RL. Multimodal endoscopic treatment of primary esophago-pleural fistula. *Endoscopy* 2016; **48**: E298-E299 [PMID: 27669530]
- 5 **Watanabe Y**, Matsuo K, Tamaoki A, Kamoto R, Hiraki S. Bronchial occlusion with Endobronchial Watanabe Spigot. *J Bronchol* 2003; **10**: 264-267 [DOI: 10.1097/00128594-200310000-00005]
- 6 **Sasada S**, Tamura K, Chang YS, Okamoto N, Matsuura Y, Tamiya M, Suzuki H, Uehara N, Kobayashi M, Hirashima T, Kawase I. Clinical evaluation of endoscopic bronchial occlusion with silicone spigots for the management of persistent pulmonary air leaks. *Intern Med* 2011; **50**: 1169-1173 [PMID: 21628931 DOI: 10.2169/internalmedicine.50.5016]
- 7 **Coiffard B**, Laroumagne S, Plojoux J, Astoul P, Dutau H. Endobronchial occlusion for massive hemoptysis with a guidewire-assisted custom-made silicone spigot: a new technique. *J Bronchology Interv Pulmonol* 2014; **21**: 366-368 [PMID: 25321461 DOI: 10.1097/LBR.0000000000000106]
- 8 **Dalar L**, Kosar F, Eryuksel E, Karasulu L, Altin S. Endobronchial Watanabe spigot embolisation in the treatment of bronchopleural fistula due to tuberculous empyema in intensive care unit. *Ann Thorac Cardiovasc Surg* 2013; **19**: 140-143 [PMID: 22785549 DOI: 10.5761/atcs.cr.11.01760]
- 9 **Miyazawa H**, Shinno H, Noto H, Fujisaka S, Taniguchi H, Izumi S. Bronchial Occlusion Using EWS (Endoscopic Watanabe Spigot) by Push & Slide Method and a Pilot Study of Bronchoscopic Lung Volume Reduction Using EWS for Severe Emphysema. *J Jpn Soc Respir Endosc* 2003; **25**: 695-703 [DOI: 10.18907/jjsre.25.8_695]

P- Reviewer: Sugimura K, Tsubosa Y S- Editor: Gong ZM

L- Editor: A E- Editor: Li D





Published by **Baishideng Publishing Group Inc**
7901 Stoneridge Drive, Suite 501, Pleasanton, CA 94588, USA
Telephone: +1-925-223-8242
Fax: +1-925-223-8243
E-mail: bpgoffice@wjgnet.com
Help Desk: <http://www.f6publishing.com/helpdesk>
<http://www.wjgnet.com>



ISSN 1007-9327

