

World Journal of *Clinical Cases*

World J Clin Cases 2017 September 16; 5(9): 349-372





MINIREVIEWS

- 349 Primary prevention of cardiovascular disease in older adults in China
Yong J, Lin D, Tan XR

CASE REPORT

- 360 Conservative approach to the acute management of a large mesenteric cyst
Leung BC, Sankey R, Fronza M, Maatouk M
- 364 Recurrent aneurysmal bone cyst of talus resulted in tibiototalcalcaneal arthrodesis
Vosoughi AR, Mozaffarian K, Erfani MA
- 368 Anti-N-methyl-D-aspartate receptor encephalitis that aggravates after acinetobacter baumannii pneumonia: A case report
Wang CC, Li DJ, Xia YQ, Liu K

ABOUT COVER

Editorial Board Member of *World Journal of Clinical Cases*, Harrison S Weisinger, PhD, Director, School of Medicine, Faculty of Health, Deakin University, Geelong, VIC 3217, Australia

AIM AND SCOPE

World Journal of Clinical Cases (*World J Clin Cases*, *WJCC*, online ISSN 2307-8960, DOI: 10.12998) is a peer-reviewed open access academic journal that aims to guide clinical practice and improve diagnostic and therapeutic skills of clinicians.

The primary task of *WJCC* is to rapidly publish high-quality Autobiography, Case Report, Clinical Case Conference (Clinicopathological Conference), Clinical Management, Diagnostic Advances, Editorial, Field of Vision, Frontier, Medical Ethics, Original Articles, Clinical Practice, Meta-Analysis, Minireviews, Review, Therapeutics Advances, and Topic Highlight, in the fields of allergy, anesthesiology, cardiac medicine, clinical genetics, clinical neurology, critical care, dentistry, dermatology, emergency medicine, endocrinology, family medicine, gastroenterology and hepatology, geriatrics and gerontology, hematology, immunology, infectious diseases, internal medicine, obstetrics and gynecology, oncology, ophthalmology, orthopedics, otolaryngology, pathology, pediatrics, peripheral vascular disease, psychiatry, radiology, rehabilitation, respiratory medicine, rheumatology, surgery, toxicology, transplantation, and urology and nephrology.

INDEXING/ABSTRACTING

World Journal of Clinical Cases is now indexed in PubMed, PubMed Central.

FLYLEAF

I-V Editorial Board

EDITORS FOR THIS ISSUE

Responsible Assistant Editor: *Xiang Li*
Responsible Electronic Editor: *Li-Min Zhao*
Proofing Editor-in-Chief: *Lian-Sheng Ma*

Responsible Science Editor: *Jin-Xin Kong*
Proofing Editorial Office Director: *Ze-Mao Gong*

NAME OF JOURNAL

World Journal of Clinical Cases

ISSN

ISSN 2307-8960 (online)

LAUNCH DATE

April 16, 2013

FREQUENCY

Monthly

EDITORS-IN-CHIEF

Giuseppe Di Lorenzo, MD, PhD, Professor, Genitourinary Cancer Section and Rare-Cancer Center, University Federico II of Napoli, 80131, Naples, Italy

Jan Jacques Michiels, MD, PhD, Professor, Primary Care, Medical Diagnostic Center Rijnmond Rotterdam, Bloodcoagulation, Internal and Vascular Medicine, Erasmus University Medical Center, Rotterdam, Goodheart Institute and Foundation, 3069 AT, Erasmus City, Rotterdam, The Netherlands

Sandro Vento, MD, Department of Internal Medicine, University of Botswana, Private Bag 00713, Gaborone, Botswana

Shuhei Yoshida, MD, PhD, Division of Gastroenterology, Beth Israel Deaconess Medical Center, Dana 509, Harvard Medical School, Boston, MA 02215, United States

EDITORIAL BOARD MEMBERS

All editorial board members resources online at <http://www.wjnet.com/2307-8960/editorialboard.htm>

EDITORIAL OFFICE

Xiu-Xia Song, Director
World Journal of Clinical Cases
Baishideng Publishing Group Inc
7901 Stoneridge Drive, Suite 501, Pleasanton, CA 94588, USA
Telephone: +1-925-2238242
Fax: +1-925-2238243
E-mail: editorialoffice@wjnet.com
Help Desk: <http://www.f6publishing.com/helpdesk>
<http://www.wjnet.com>

PUBLISHER

Baishideng Publishing Group Inc
7901 Stoneridge Drive,
Suite 501, Pleasanton, CA 94588, USA
Telephone: +1-925-2238242
Fax: +1-925-2238243
E-mail: bpgoffice@wjnet.com

Help Desk: <http://www.f6publishing.com/helpdesk>
<http://www.wjnet.com>

PUBLICATION DATE

September 16, 2017

COPYRIGHT

© 2017 Baishideng Publishing Group Inc. Articles published by this Open Access journal are distributed under the terms of the Creative Commons Attribution Non-commercial License, which permits use, distribution, and reproduction in any medium, provided the original work is properly cited, the use is non commercial and is otherwise in compliance with the license.

SPECIAL STATEMENT

All articles published in journals owned by the Baishideng Publishing Group (BPG) represent the views and opinions of their authors, and not the views, opinions or policies of the BPG, except where otherwise explicitly indicated.

INSTRUCTIONS TO AUTHORS

<http://www.wjnet.com/bpg/gerinfo/204>

ONLINE SUBMISSION

<http://www.f6publishing.com>

Conservative approach to the acute management of a large mesenteric cyst

Billy C Leung, Ruth Sankey, Matteo Fronza, Mohamed Maatouk

Billy C Leung, Ruth Sankey, Matteo Fronza, Mohamed Maatouk, Department of General and Colorectal Surgery, Milton Keynes Hospital, Eaglestone, Milton Keynes MK6 5LD, United Kingdom

Author contributions: Billy C Leung: Lead author and case report writer; Ruth Sankey: Literature search and content review; Matteo Fronza: Literature search and data collection (notes and radiographs); Mohamed Maatouk: Senior author, content review and guidance; all authors contributed significantly towards the completion of the case report.

Informed consent statement: The patient involved in this study gave her written informed consent authorizing use and disclosure of her protected health information.

Conflict-of-interest statement: All the authors have no conflicts of interests to declare.

Open-Access: This article is an open-access article which was selected by an in-house editor and fully peer-reviewed by external reviewers. It is distributed in accordance with the Creative Commons Attribution Non Commercial (CC BY-NC 4.0) license, which permits others to distribute, remix, adapt, build upon this work non-commercially, and license their derivative works on different terms, provided the original work is properly cited and the use is non-commercial. See: <http://creativecommons.org/licenses/by-nc/4.0/>

Manuscript source: Unsolicited manuscript

Correspondence to: Billy C Leung, MBBS, BSc, MRCS, MSc, DOHNS, Core Surgical Trainee, Department of General and Colorectal Surgery, Milton Keynes Hospital, H8 Standing Way, Eaglestone, Milton Keynes MK6 5LD, United Kingdom. billy-ching.leung@kcl.ac.uk
Telephone: +44-7771561978

Received: September 22, 2016

Peer-review started: September 23, 2016

First decision: November 2, 2016

Revised: April 30, 2017

Accepted: June 6, 2017

Article in press: June 8, 2017

Published online: September 16, 2017

Abstract

Mesenteric cysts are rare, benign gastrointestinal cystic lesions, which are often non-troublesome and present as an incidental radiological finding. However, surgery is often performed in the acute setting to remove lesions that are symptomatic. This report highlights the case of a large, symptomatic mesenteric cyst managed successfully with initial conservative measures followed by planned elective surgery. A 44-year-old female presented with a four-day history of generalised abdominal pain associated with distension, fever, diarrhoea and vomiting. Computer tomography revealed a large (21.7 cm × 11.8 cm × 14 cm) mesenteric cyst within the left abdomen cavity. She was admitted and treated conservatively with intravenous fluids and antibiotics for four days, which lead to complete symptom resolution. Follow-up at intervals of one and three months revealed no return of symptoms. An elective laparotomy and excision of the mesenteric cyst was then scheduled and performed safely at nine months after the initial presentation. Compared to acute surgery, acute conservative management followed by planned elective resection of a symptomatic mesenteric cyst may prove safer. The withholding of an immediate operation may potentially avoid unnecessary operative risk and should be considered in patients without obstructive and peritonitic symptoms. Our case demonstrated the safe use of initial conservative management followed by planned elective surgery of a mesenteric cyst found in the acute setting, which was symptomatic but was not obstructive or causing peritonitic symptoms.

Key words: Conservative management; Acute setting; Mesenteric cysts; Elective operation

© **The Author(s) 2017.** Published by Baishideng Publishing Group Inc. All rights reserved.

Core tip: Mesenteric cysts are often asymptomatic and

present as an incidental finding, and acute operative removal is usually performed on symptomatic cases. However for selected cases, an initial conservative approach followed by planned elective surgery can be opted for, particularly in the absence of peritonitis and bowel obstruction. A safer and planned elective procedure would reduce the risk of operative complications. Acute drainage of the cyst should also be avoided due to the high risk of recurrence and infection.

Leung BC, Sankey R, Fronza M, Maatouk M. Conservative approach to the acute management of a large mesenteric cyst. *World J Clin Cases* 2017; 5(9): 360-363 Available from: URL: <http://www.wjgnet.com/2307-8960/full/v5/i9/360.htm> DOI: <http://dx.doi.org/10.12998/wjcc.v5.i9.360>

INTRODUCTION

Mesenteric cysts are rare, benign intra-abdominal cystic lesions of the gastrointestinal mesentery, with an incidence of 1/100000 in adults and 1/20000 in children, and a female to male ratio of 2:1, which commonly present in the second decade of life^[1]. Lesions are most commonly located in the small bowel (66%) and large bowel (33%), with the ascending colon being most frequently affected, and rarely found in the descending colon, sigmoid colon and rectum. They only occasionally extend to the retroperitoneum^[1]. The size of a cyst can vary from a few millimetres to 30cm in diameter, containing up to 2500 mL of fluid^[2]. Mesenteric cysts are often asymptomatic and discovered as an incidental finding from radiological investigations, but may present with acute or chronic abdominal pain (55%-81%), palpable mass (44%-61%), distension (17%-61%), nausea and vomiting (45%), constipation (27%) and diarrhoea (6%)^[1]. In severe cases, it can lead to bowel obstruction, obstructive uropathy, volvulus, and peritonitis usually from a haemorrhagic or infective cyst^[3]. Surgical excision of the mesenteric cyst, with or without resection of any neighbouring visceral organs is the common management approach in the acute setting, with marsupialisation reserved for cases that may require wide resection of adjacent organs, but the recurrence rate is high^[4]. Drainage is no longer advised due to infection and recurrence risks^[5].

This article highlights a case of a symptomatic mesenteric cyst found in the acute setting managed successfully by conservative measures without the need for acute surgical intervention. This has not been previously reported in the literature. We postulate that the conservative approach to mesenteric cysts in the acute setting followed by planned elective surgery for selected cases may prove to be a beneficial and safe approach.

CASE REPORT

A 44-year-old female presented to our surgical assessment unit with a four-day history of generalised abdominal pain and distension, and associated fever, vomiting, diarrhoea and reduced oral intake. She did not have any symptoms of haematemesis, rectal bleeding and mucus discharge, or any urinary and gynecological symptoms. She had no significant past medical or surgical history. On examination she was haemodynamically stable with a pyrexia of 38-39 °C. Her abdomen was distended but soft, with tenderness over the epigastrium and right-side of the abdomen, with no obvious palpable masses or shifting dullness. Normal bowel sounds were present on auscultation. Rectal examination was normal. Routine blood tests were within normal limits aside from an elevated CRP (C-reactive protein) of 120. Blood cultures, urine-dip, urine pregnancy test, electrocardiography (ECG) and chest X-ray (CXR) was unremarkable. Contrast computed tomography (CT) revealed a huge thin-walled fluid collection with no abnormal enhancement and was separated from any visceral organs, measuring 21.7 cm (craniocaudal) × 11.8 cm (transverse) × 14 cm (antero-posterior) which was occupying the left side of abdomen and upper pelvis (Figure 1). No other abnormalities were found. The lesion was reported presumably as a mesenteric cyst with a suggested element of chronicity due to the calcified nature of the cyst wall.

Initial management included intravenous fluids, analgesia, antiemetics and broad-spectrum antibiotics for symptom relief and suspected concurrent infective gastroenteritis. Explorative surgery was withheld in view of her improving clinical status and inflammatory markers when repeated hours later. She was admitted for four days and discharged with a course of oral antibiotics and no acute surgical intervention. One month after discharge, a pelvic magnetic resonance imaging scan was performed to investigate a possible retroperitoneal origin of the cyst. But the scan further confirmed the acute CT findings of a large simple left-side abdominal cyst (22 cm × 13 cm × 11.5 cm) extended superiorly to the inferior splenic margin which abutted the left kidney, it had no relation to any retroperitoneal structures, such as the ovaries or kidneys (Figure 2). Follow-up at one and three months revealed no worrying clinical features, and a subsequent decision for elective operation was made to excise the lesion. An elective laparotomy and excision of mesenteric cyst was performed at nine months after the initial presentation. There were no post-operative complications and follow-up at six weeks was unremarkable. Finally, histology of the excised lesion confirmed the diagnosis of a mesenteric cyst.

DISCUSSION

Mesenteric cysts are rare, benign intra-abdominal

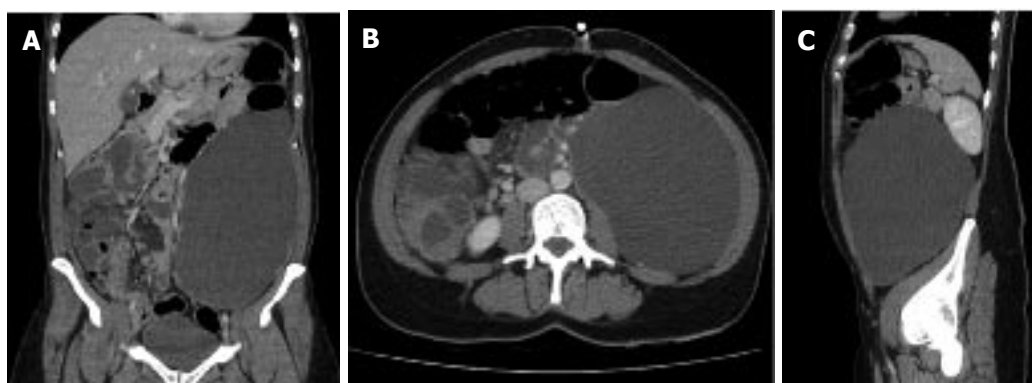


Figure 1 Computed tomography of the abdomen and pelvis showing a large-sized mesenteric cyst. A: Coronal plane - craniocaudal diameter of 21.7 cm; B: Transverse plane - transverse diameter of 11.8 cm; C: Sagittal plane - antero-posterior diameter of 14 cm.

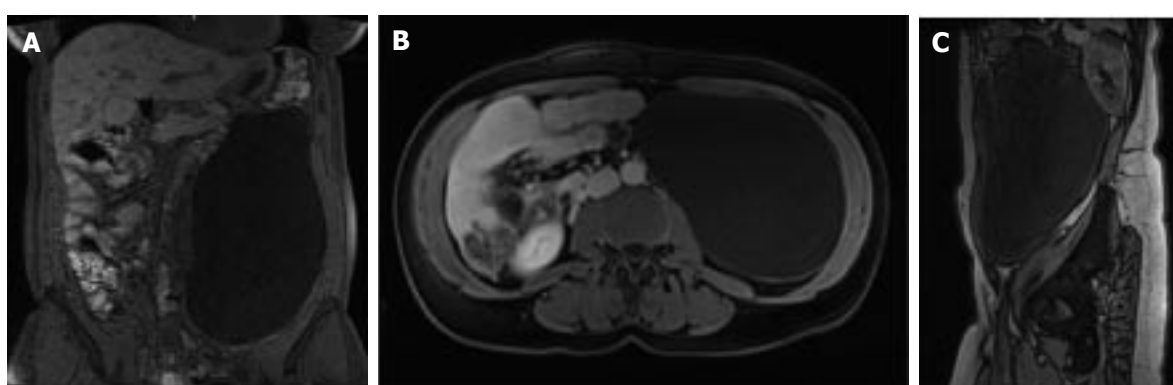


Figure 2 A pelvic magnetic resonance imaging scan confirming the intra-abdominal nature of the cyst, and ruling out a retroperitoneal origin, *i.e.*, an ovarian cyst.

lesions found in the intestinal mesentery. The aetiology is unclear, but the most accepted theory to date describes a benign proliferation of ectopic mesenteric lymphatic tissue failing to communicate with the core lymphatic system^[6]. In almost all reported cases, the management approach for a symptomatic mesenteric cyst is acute surgical resection, often performed laparoscopically, or in some cases using marsupialisation to avoid extensive bowel resection. Surgical drainage is avoided due to infection and recurrence^[4,5]. The use of conservative management in the acute setting followed by elective surgery had not been previously reported.

Our case demonstrated the safety of conservative management for a symptomatic cyst in the acute setting without the need for immediate surgical intervention. This avoided any potential complications associated with acute surgery. Emergency surgery yields higher risks of complications, such as damage to surrounding structures, visceral perforation, intra-abdominal sepsis, and wound infection. Furthermore, the possibility of cyst regression may fundamentally avoid the need for any operation at all, which means potentially avoiding long-term postoperative complications, such as abdominal adhesions and herniations. However, such a conservative approach should only be reserved for stable patients without

symptoms of bowel obstruction, ischaemic bowel, obstructive uropathy, volvulus, and peritonitis.

However by withholding surgery, the risk of adverse sequelae such as bowel obstruction or peritonitis from cyst rupture is inherent, but with limited literature evaluating the disease course of conservatively managed mesenteric cysts, this risk is difficult to quantify currently. A literature search reveals a case-series conducted on seventeen children, which stated the importance of early diagnosis and treatment to prevent significant complications^[3]. Nevertheless, we believe that the decision to operate in the acute setting should only be considered if absolutely necessary. The calcified nature of the cyst wall in our case suggests an element of chronicity and stability of the lesion, possibly a process of chronic inflammation, which supports the decision of not operating immediately. Of particular note, the clinical finding of right-sided abdominal tenderness in our participant did not correlate with the left-sided mesenteric cyst finding, which serves to highlight the often subtle nature of mesenteric cyst presentation.

The uncomplicated nature of the elective laparotomy and excision of mesenteric cyst performed nine months after the initial acute presentation highlights the advantage of a delayed planned operation. A randomised controlled trial to compare the benefit

of such an approach would be ethically challenging. Overall, the benefit of conservative management in the acute setting avoids an unplanned operation, which may have significant operative and postoperative complications.

In conclusion, This case report aims to provide future clinicians with the confidence to manage large uncomplicated mesenteric cysts conservatively in the acute setting, thus avoiding the need for an emergency operation that potentially yields a higher risk of peri and post-operative complications compared to a planned operation. The decision to manage conservatively compared to surgically in the acute setting should be considered on an individual basis. Undoubtedly, the definitive treatment is the excision of the mesenteric cyst, but a planned elective surgical approach may be significantly safer than an emergency one.

COMMENTS

Case characteristics

A 44-year-old female with no significant medical history presented with a four-day history of generalised abdominal pain associated with distension, fever, diarrhoea and vomiting.

Clinical diagnosis

Abdomen was distended but soft, with tenderness over the epigastrium and right-sided region, with no palpable mass or shifting dullness, and bowel sounds on auscultation was normal.

Differential diagnosis

Omental cyst, pancreatic or non-pancreatic pseudocyst, echinococcal cyst, enteric duplication cyst, cystic mesothelioma, and ovarian cyst, as well as ascites and lymphoma.

Laboratory diagnosis

All blood tests were within normal limits aside from a raised C-reactive protein (CRP) of 120, and blood cultures, urine-dip, pregnancy test and electrocardiography (ECG) were unremarkable.

Imaging diagnosis

Contrast computed tomography showed a huge thin-walled intra-abdominal fluid collection measuring 21.7 cm × 11.8 cm × 14 cm occupying the left side of abdomen and upper pelvis, suggestive of a mesenteric cyst.

Pathological diagnosis

Histological confirmation of mesenteric cyst after elective excision.

Treatment

Initial conservative management with fluid support in the acute setting, followed by elective surgical excision of lesion.

Related reports

Surgical excision of the mesenteric cyst, with or without resection of neighbouring organs, was the most common approach in the acute setting. Marsupialisation was reserved for cases that may require wide resection of adjacent organs, but the recurrence rate is high. Drainage is no longer advised due to infection and recurrence risks.

Term explanation

Mesenteric cysts are rare, benign gastrointestinal cystic lesions, which are often non-troublesome and present as an incidental radiological finding.

Experiences and lessons

Initial conservative approach to mesenteric cysts with a planned elective surgical excision should be adopted in selected cases, such as in the absence of peritonitis and bowel obstruction.

Peer-review

This article is interesting and informative on a sensible topic, and the clinical problem is clearly presented in following parts of the article.

REFERENCES

- 1 Liew SC, Glenn DC, Storey DW. Mesenteric cyst. *Aust N Z J Surg* 1994; **64**: 741-744 [PMID: 7945079 DOI: 10.111/j.1445-2197.1994.tb04530.x]
- 2 Aydinli B, Yildiran MI, Kantarci M, Atamanalp SS, Basoglu M, Ozturk G, Onbas O, Oren D. Giant mesenteric cyst. *Dig Dis Sci* 2006; **51**: 1380-1382 [PMID: 16868822 DOI: 10.1007/s10620-006-9081-9]
- 3 Prakash A, Agrawal A, Gupta RK, Sanghvi B, Parelkar S. Early management of mesenteric cyst prevents catastrophes: a single centre analysis of 17 cases. *Afr J Paediatr Surg* 2010; **7**: 140-143 [DOI: 10.4103/0189-6725.70411]
- 4 Kurtz RJ, Heimann TM, Holt J, Beck AR. Mesenteric and retroperitoneal cysts. *Ann Surg* 1986; **203**: 109-112 [PMID: 3942415 DOI: 10.1097/00000658-198601000-00017]
- 5 Vu JH, Thomas EL, Spencer DD. Laparoscopic management of mesenteric cyst. *Am Surg* 1999; **65**: 264-265 [PMID: 10075306 DOI: 10.4114/wiitm.2011.24696]
- 6 Richard R. Mesenteric and omental cysts, 6th ed, Pediatric Surgery. In: Grosfeld JL, O'Neill JA Jr, Coran AG Jr, Fonkalsrud EW, editors. Philadelphia: Mosby Elsevier; 2006: 1399-1406

P-Reviewer: Hermann J, Miliaras S, Niu CY, Zeiler M
S-Editor: Kong JX **L-Editor:** A **E-Editor:** Zhao LM





Published by **Baishideng Publishing Group Inc**
7901 Stoneridge Drive, Suite 501, Pleasanton, CA 94588, USA
Telephone: +1-925-223-8242
Fax: +1-925-223-8243
E-mail: bpgoffice@wjgnet.com
Help Desk: <http://www.f6publishing.com/helpdesk>
<http://www.wjgnet.com>

