

# World Journal of *Nephrology*

*World J Nephrol* 2017 November 6; 6(6): 243-250



**CASE REPORT**

- 243 Atypical hemolytic-uremic syndrome due to complement factor I mutation

*Almalki AH, Sadagah LF, Qureshi M, Maghrabi H, Algain A, Alsaeed A*

**ABOUT COVER**

Editorial Board Member of *World Journal of Nephrology*, Manuel Pestana Vasconcelos, MD, PhD, Professor, Nephrology Research and Development Unit, Faculty of Medicine and S. Joao Hospital Centre, Porto 4202-451, Portugal

**AIM AND SCOPE**

*World Journal of Nephrology* (*World J Nephrol*, *WJN*, online ISSN 2220-6124, DOI: 10.5527) is a peer-reviewed open access academic journal that aims to guide clinical practice and improve diagnostic and therapeutic skills of clinicians.

*WJN* covers topics concerning kidney development, renal regeneration, kidney tumors, therapy of renal disease, hemodialysis, peritoneal dialysis, kidney transplantation, diagnostic imaging, evidence-based medicine, epidemiology and nursing. Priority publication will be given to articles concerning diagnosis and treatment of nephrology diseases. The following aspects are covered: Clinical diagnosis, laboratory diagnosis, differential diagnosis, imaging tests, pathological diagnosis, molecular biological diagnosis, immunological diagnosis, genetic diagnosis, functional diagnostics, and physical diagnosis; and comprehensive therapy, drug therapy, surgical therapy, interventional treatment, minimally invasive therapy, and robot-assisted therapy.

We encourage authors to submit their manuscripts to *WJN*. We will give priority to manuscripts that are supported by major national and international foundations and those that are of great basic and clinical significance.

**INDEXING/ABSTRACTING**

*World Journal of Nephrology* is now indexed in PubMed, PubMed Central.

**FLYLEAF**

**I-III Editorial Board**

**EDITORS FOR THIS ISSUE**

**Responsible Assistant Editor:** *Xiang Li*  
**Responsible Electronic Editor:** *Li-Min Zhao*  
**Proofing Editor-in-Chief:** *Lian-Sheng Ma*

**Responsible Science Editor:** *Fang-Fang Ji*  
**Proofing Editorial Office Director:** *Xiu-Xia Song*

**NAME OF JOURNAL**  
*World Journal of Nephrology*

**ISSN**  
ISSN 2220-6124 (online)

**LAUNCH DATE**  
February 6, 2012

**FREQUENCY**  
Bimonthly

**EDITORS-IN-CHIEF**  
**Josep M Campistol, Professor**, ICNU Director, Hospital Clínic, Universitat de Barcelona, c/Villarreal, 170 ESC 12-5, 08036 Barcelona, Spain

**Anil K Mandal, MB, BS, Professor**, Department of Medicine, University of Florida, Gainesville, Florida; Mandal Diabetes Research Foundation, 105 Southpark Blvd., Suite B-202, Saint Augustine, FL 32086, United States

**EDITORIAL BOARD MEMBERS**  
All editorial board members resources online at <http://www.wjnet.com>

[www.wjnet.com/2220-6124/editorialboard.htm](http://www.wjnet.com/2220-6124/editorialboard.htm)

**EDITORIAL OFFICE**  
Xiu-Xia Song, Director  
*World Journal of Nephrology*  
Baishideng Publishing Group Inc  
7901 Stoneridge Drive,  
Suite 501, Pleasanton, CA 94588, USA  
Telephone: +1-925-2238242  
Fax: +1-925-2238243  
E-mail: [editorialoffice@wjnet.com](mailto:editorialoffice@wjnet.com)  
Help Desk: <http://www.f6publishing.com/helpdesk>  
<http://www.wjnet.com>

**PUBLISHER**  
Baishideng Publishing Group Inc  
7901 Stoneridge Drive,  
Suite 501, Pleasanton, CA 94588, USA  
Telephone: +1-925-2238242  
Fax: +1-925-2238243  
E-mail: [bpgoffice@wjnet.com](mailto:bpgoffice@wjnet.com)  
Help Desk: <http://www.f6publishing.com/helpdesk>  
<http://www.wjnet.com>

**PUBLICATION DATE**  
November 6, 2017

**COPYRIGHT**  
© 2017 Baishideng Publishing Group Inc. Articles published by this Open-Access journal are distributed under the terms of the Creative Commons Attribution Non-commercial License, which permits use, distribution, and reproduction in any medium, provided the original work is properly cited, the use is non commercial and is otherwise in compliance with the license.

**SPECIAL STATEMENT**  
All articles published in journals owned by the Baishideng Publishing Group (BPG) represent the views and opinions of their authors, and not the views, opinions or policies of the BPG, except where otherwise explicitly indicated.

**INSTRUCTIONS TO AUTHORS**  
<http://www.wjnet.com/bpg/gerinfo/204>

**ONLINE SUBMISSION**  
<http://www.f6publishing.com>

## Atypical hemolytic-uremic syndrome due to complement factor I mutation

Abdullah H Almalki, Laila F Sadagah, Mohammed Qureshi, Hatim Maghrabi, Abdulrahman Algain, Ahmed Alsaeed

Abdullah H Almalki, Laila F Sadagah, Mohammed Qureshi, Hatim Maghrabi, Abdulrahman Algain, Ahmed Alsaeed, King Abdulaziz Medical City, Ministry of National Guard, Jeddah 21423, Saudi Arabia

Abdullah H Almalki, Hatim Maghrabi, Ahmed Alsaeed, King Saud Bin Abdulaziz University for Health Sciences, Ministry of National Guard, Jeddah 21423, Saudi Arabia

ORCID number: Abdullah H Almalki (0000-0003-1885-3709); Laila F Sadagah (0000-0002-0133-8615); Mohammed Qureshi (0000-0002-8855-6585); Hatim Maghrabi (0000-0002-0074-2245); Abdulrahman Algain (0000-0002-9886-4477); Ahmed Alsaeed (0000-0003-1711-7031).

**Author contributions:** Almalki AH carried out literature search, wrote the abstract and discussion, and revised and aligned the whole manuscript; Sadagah LF conducted independent literature search and wrote the background; Algain A collected clinical information and wrote the initial case description; Qureshi M revised all collected clinical information and wrote the final case description and the draft of the abstract; Maghrabi H prepared the slides, provided histological description, and aided in writing the case description; Alsaeed A carried out independent search on hematologic literature and revised and edited the discussion; all authors read and approved the final manuscript.

**Institutional review board statement:** This case report was exempt from the Institutional Review Board standards at King Abdulaziz International Medical Research Centre.

**Informed consent statement:** The patient involved in this study gave written informed consent authorizing the use and disclosure of her clinical data.

**Conflict-of-interest statement:** All authors have no conflict of interest to declare.

**Open-Access:** This article is an open-access article which was selected by an in-house editor and fully peer-reviewed by external reviewers. It is distributed in accordance with the Creative Commons Attribution Non Commercial (CC BY-NC 4.0) license, which permits others to distribute, remix, adapt, build upon this work non-commercially, and license their derivative works on

different terms, provided the original work is properly cited and the use is non-commercial. See: <http://creativecommons.org/licenses/by-nc/4.0/>

**Manuscript source:** Unsolicited manuscript

**Correspondence to:** Abdullah H Almalki, Section Head, Department of Medicine, King Abdulaziz Medical City, Western Region, PO Box 9515, Jeddah 21423, Saudi Arabia. [malkia02@ngha.med.sa](mailto:malkia02@ngha.med.sa)  
Telephone: +966-12-2266666  
Fax: +966-2-2266200

**Received:** June 27, 2017

**Peer-review started:** June 28, 2017

**First decision:** September 4, 2017

**Revised:** September 12, 2017

**Accepted:** November 1, 2017

**Article in press:** November 1, 2017

**Published online:** November 6, 2017

### Abstract

Atypical hemolytic-uremic syndrome (aHUS) is a rare disease of complement dysregulation leading to thrombotic microangiopathy (TMA). Renal involvement and progression to end-stage renal disease are common in untreated patients. We report a 52-year-old female patient who presented with severe acute kidney injury, microangiopathic hemolytic anemia, and thrombocytopenia. She was managed with steroid, plasma exchange, and dialysis. Kidney biopsy shows TMA and renal cortical necrosis. Genetic analysis reveals heterozygous complement factor I (CFI) mutation. Eculizumab was initiated after 3 mo of presentation, continued for 9 mo, and stopped because of sustained hematologic remission, steady renal function, and cost issues. Despite this, the patient continued to be in hematologic remission and showed signs of renal recovery, and peritoneal dialysis was stopped 32 mo

after initiation. We report a case of aHUS due to CFI mutation, which, to the best of our knowledge, has not been reported before in Saudi Arabia. Our case illustrates the challenges related to the diagnosis and management of this condition, in which a high index of suspicion and prompt treatment are usually necessary.

**Key words:** Thrombotic microangiopathy; Atypical hemolytic-uremic syndrome; Complement factor I mutation

© **The Author(s) 2017.** Published by Baishideng Publishing Group Inc. All rights reserved.

**Core tip:** Atypical hemolytic-uremic syndrome (aHUS) is a rare disorder. In some cases, complement mutation can be identified. The most common cases involved mutations of genes for complement factor H and membrane co-factor protein, whereas rare cases were linked to complement factor I (CFI) mutation. We here describe the first case of aHUS due to CFI mutation in Saudi Arabia. Our case presented with interesting characteristics including late recovery of kidney failure from dialysis upon initiation of eculizumab and persistent hematologic and renal remissions despite discontinuation of eculizumab.

Almalki AH, Sadagah LF, Qureshi M, Maghrabi H, Algain A, Alsaeed A. Atypical hemolytic-uremic syndrome due to complement factor I mutation. *World J Nephrol* 2017; 6(6): 243-250 Available from: URL: <http://www.wjgnet.com/2220-6124/full/v6/i6/243.htm> DOI: <http://dx.doi.org/10.5527/wjn.v6.i6.243>

## INTRODUCTION

Thrombotic microangiopathy (TMA) is a life-threatening syndrome characterized by systemic microvascular occlusions, thrombocytopenia, microangiopathic hemolytic anemia, and renal or other end-organ damage<sup>[1,2]</sup>. TMA may complicate several conditions, such as systemic infections, cancer, pregnancy complications, autoimmune diseases, organ transplantation, and severe hypertension<sup>[1]</sup>.

Atypical hemolytic-uremic syndrome (aHUS) is a rare, progressive, life-threatening form of TMA caused by a disorder in complement regulation, predominantly dysregulation of the complement alternative pathway<sup>[3,4]</sup>. The underlying pathogenesis is complement gene mutations in the majority of patients and antibodies to complement factor H (CFH) in a smaller subset of patients (approximately 6%)<sup>[5-7]</sup>. Several cases of aHUS had been reported at different age groups in association with mutations of genes for complement factor H (CFH)<sup>[8-10]</sup>, membrane co-factor protein (MCP)<sup>[8,11]</sup>, and complement factor I (CFI)<sup>[8,12,13]</sup>. The most frequent mutation detected involves CFH (approximately 30%), then MCP (approximately 10%), and lastly CFI

(approximately 5%)<sup>[12]</sup>. Although approximately 80% of patients present acutely with thrombocytopenia, microangiopathic hemolytic anemia, and renal impairment<sup>[14,15]</sup>, the onset may be more gradual in other patients<sup>[16]</sup>. Because of systemic vascular involvement<sup>[17]</sup>, extrarenal manifestations occur in up to 48% of patients, with frequent neurologic and cardiovascular involvement<sup>[6,18-20]</sup>.

Untreated aHUS has been linked to high morbidity and mortality, with a 33%-40% risk of progression to end-stage renal disease (ESRD) or death during the first clinical manifestation<sup>[6]</sup>. Patients treated with plasma exchange remains to have a poor prognosis, with up to 65% experiencing permanent renal damage, ESRD progression, or death within 1 year of diagnosis<sup>[8]</sup>.

The understanding of the disease pathogenesis, which involves activation of alternative complement pathway, resulting in the formation of membrane attack complex (MAC) C5b-9<sup>[3]</sup>, had contributed to the advances in treatment, which is eculizumab, a monoclonal IgG antibody that binds to C5 and prevents subsequent formation of terminal complement<sup>[21]</sup>. Eculizumab has significantly decreased the risk of ESRD in adult patients with aHUS from 60%-70%<sup>[6,14]</sup> to approximately 15%-20%<sup>[22-24]</sup>.

Globally, CFI mutation had been rarely reported in association with aHUS, and to our knowledge, this is the first case reported in Saudi Arabia. Our case highlights important challenges related to the diagnosis and treatment of this rare disorder.

## CASE REPORT

### Patient information and presentation

A 52-year-old Saudi female, with hypothyroidism on L-thyroxine, presented to the emergency department on November 25, 2012, complaining of continuous lower abdominal pain radiating to the left flank, passing clots with heavy menstrual bleeding, and dysuria for 1 mo. She used oral contraceptive pill for irregular menstrual bleeding 1 mo before, which she stopped 5 d before presentation. Basic laboratory investigations were unremarkable apart from leukocytosis (Table 1). The result of the pregnancy test, using serum  $\beta$ -hCG, was negative. Abdominal and pelvic ultrasound showed a mildly enlarged liver (18 cm), mildly enlarged spleen (12 cm), and a bulky uterus with thickened endometrial lining and left ovarian cysts with internal echoes, which were likely hemorrhagic cysts. Other structures were unremarkable. Abdominal and pelvic computed tomography (with intravenous contrast) was also remarkable for bulky uterus and left adnexal cyst. Appendicitis was ruled out, and she was given oral non-steroidal anti-inflammatory drug (ibuprofen 200 mg every 8 h, as needed) for pain control and oral antibiotics (ciprofloxacin 500 mg bid for 7 d) for suspicion of urinary tract infection and was discharged



**Table 1 Laboratory investigations**

Laboratory parameter	Before admission (Nov 25, 2012)	Day of admission (Nov 28, 2012)
Hematologic tests		
Complete blood count		
WBCs (normal, $4-10 \times 10^9/L$ )	14.4	14.1
Hemoglobin (normal, 12-15 g/dL)	11.8	8.9
Platelets (normal, $150-400 \times 10^9/L$ )	399	103
Coagulation profile (s)		
PT (normal, 11-14)	12	10
INR (normal, 0.9-1.2)	0.9	0.9
PTT (normal, 20-40)	24	29
Schistocytes on peripheral blood film	Not done	Yes
Serum biochemical tests		
Renal function tests (mmol/L)		
Sodium (normal, 135-145)	142	129
Potassium (normal, 3.5-5.5)	3.9	4.1
Bicarbonate (normal, 22-28)	15	11
Chloride (98-106)	110	99
Urea (normal, 2.1-7.1)	3.2	19
Creatinine (normal, 62-106)	54	773
Liver function tests		
Total bilirubin (normal, 5-20 mmol/L)	17.1	25.8
AST (normal, 0-40 U/L)	17	142
ALT (normal, 0-30 U/L)	18	240
ALP (normal, 40-129 U/L)	104	90
GGT (normal, 8-65 U/L)	21	18
Albumin (normal, 35-50 g/L)	42	29
LDH (normal, 140-280 U/L)	273	3377

PT: Prothrombin time; INR: International normalized ratio; PTT: Partial thromboplastin time; AST: Aspartate transaminase; ALT: Alanine transaminase; ALP: Alkaline phosphatase; GGT:  $\gamma$ -Glutamyltransferase; LDH: Lactate dehydrogenase.

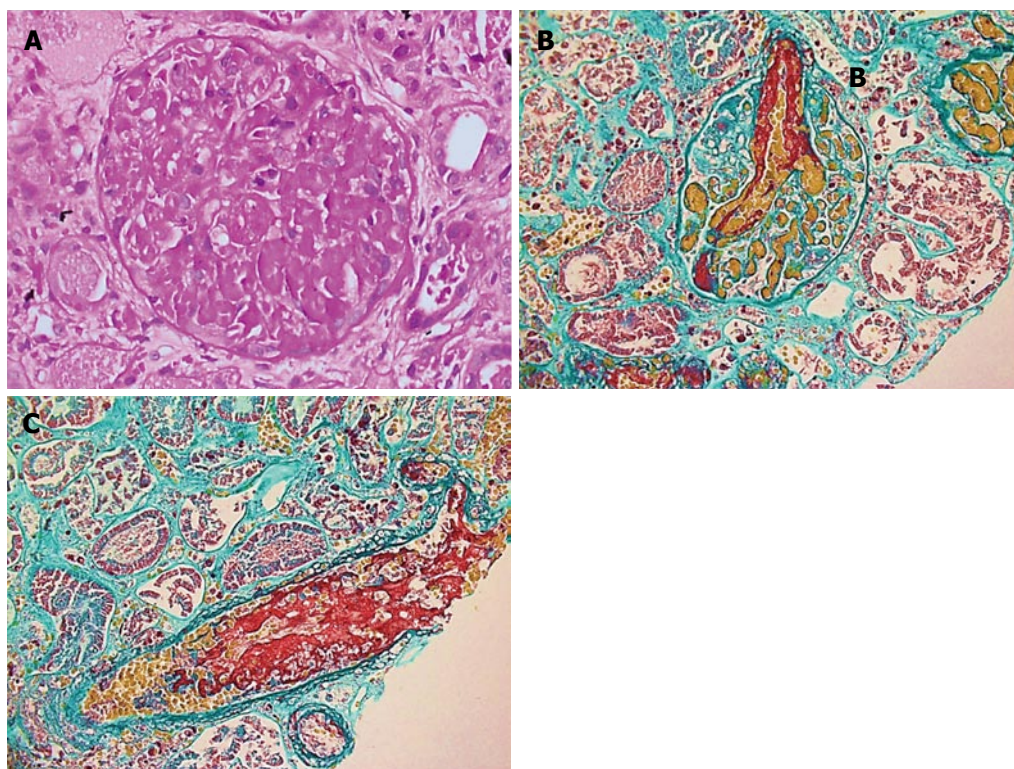
home.

Three days later (November 28, 2012), she returned to the emergency department with similar complaints, along with nausea, vomiting, shortness of breath, and reduced urine output for 2 d. She had no fever, joint pain, hematuria, or diarrhea. A systemic review was otherwise unremarkable. She is a housewife and mother of five healthy kids. Family history was negative for any hematologic, rheumatologic, malignant, or familial disorders. There was no significant history of renal disease in the family. On examination, she was conscious and oriented but pale. She had no signs of respiratory distress. She was afebrile, with blood pressure of 149/70 mmHg and normal heart rate. She had bilateral lower limb edema and bruises over her abdomen and lower limbs. Abdominal palpation was tender on the left flank and lumbar areas. Examination of other systems was unremarkable. Laboratory investigations showed persistent leukocytosis, a newly developing anemia, thrombocytopenia, and acute derangement in renal and liver function tests (Table 1) (serum creatinine: 773  $\mu\text{mol/L}$ ; normal: 62-106  $\mu\text{mol/L}$ ; C-reactive protein: 239 mg/L; normal: 0.3-5.0 mg/L; erythrocyte sedimentation rate, 64 mm/h); lactic acid: 0.9 mmol/L, normal: 0.7-2.1 mmol/L). As shown in Table 1, the presence of anemia, thrombocytopenia with elevated total bilirubin, and lactate dehydrogenase (LDH) alerted the treatment team to observe for hemolysis. Peripheral blood smear

revealed significant schistocytes, whereas the result of the direct antiglobulin test was negative. Urinalysis was positive for protein, red blood cells, and leukoestrane and was negative for nitrite. Complement (C3 and C4) levels, autoantibody panel, antiphospholipid antibody panel, hepatitis serology, and tumor markers were all negative.

### **Clinical and management focus**

Because of the presence of microangiopathic features and acute kidney injury, hemolytic-uremic syndrome/thrombotic thrombocytopenic purpura was considered, and she was started on hemodialysis along with daily plasma exchange and pulse steroid. Methylprednisolone was given for 3 d, and then oral prednisolone was started and then gradually tapered. She was treated for possible urinary tract infection with intravenous piperacillin-tazobactam 2.25 g every 8 h, and her vaginal bleeding was treated with medroxyprogesterone injections. Her platelet count improved with plasma exchange and steroids but started to decrease, and thus, diagnostic kidney biopsy was performed. The biopsy was complicated with left renal subcapsular hematoma and retroperitoneal bleeding. The bleeding was successfully controlled with embolization; however, the procedure also revealed bilateral renal vein thrombosis. During this bleeding episode, plasma exchange was intermittently stopped because of rapidly decreasing platelet count and increasing LDH,



**Figure 1** Finding of renal biopsy showed. A: A glomerulus with extensive fibrin thrombi involvement, obliterating the capillary loops (Periodic Acid-Schiff stain, original magnification  $\times 400$ ); B: A glomerulus with an afferent arteriole with extensive red, fuchsinophilic material (fibrin) involvement (Masson trichrome stain, original magnification  $\times 400$ ); C: A small arteriole with luminal fibrin staining red (fuchsinophilic) (Masson trichrome stain, original magnification  $\times 400$ ).

which necessitated reinstitution of plasma exchange with fresh frozen plasma infusion. The dose of plasma exchange was increased from 1 to 1.5 plasma volumes daily.

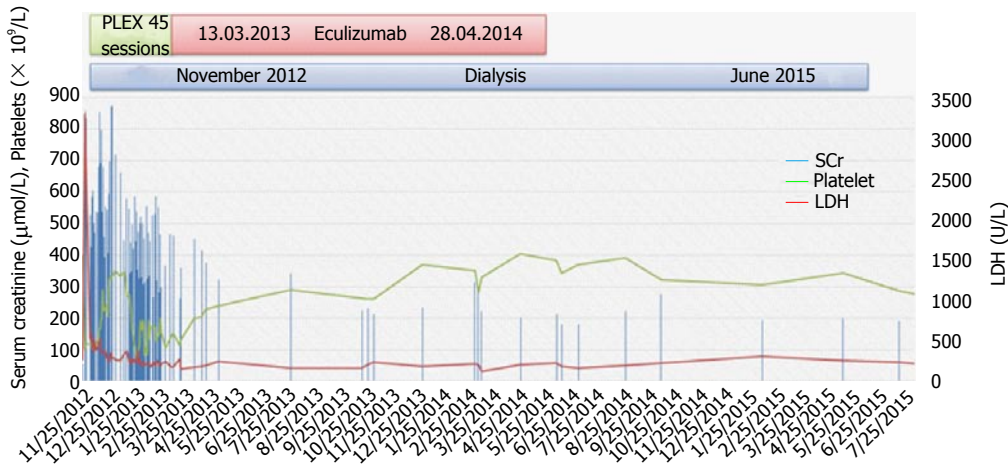
Renal biopsy showed findings of renal cortical necrosis, TMA, and acute tubular necrosis (15 glomeruli, none with global sclerosis or significant tubular atrophy/interstitial fibrosis, arteriosclerosis, or hyaline arteriolosclerosis). Immunofluorescence was negative, and electron microscopy was negative for immune deposits, but it showed significant subendothelial widening with flocculent material and areas of organized structures resembling fibrin. There was foot process effacement involving short segments 10%-15% (Figure 1).

The patient also underwent endometrial bio-psy, which only showed necrotic decidua with no fetal elements. Bone marrow aspirate showed normocellular active bone marrow with trilineage hematopoiesis. Mammogram and bone scan results were unremarkable. For the hemodialysis and plasma exchange, a right internal jugular tunneled cuffed catheter was inserted; however, shortly after, she developed exit-site infection due to *Pseudomonas*, but it was successfully treated with ciprofloxacin. Despite plasma exchange, steroids, and antibiotics, the patient remained anuric, dependent on dialysis, and with fluctuating platelet count. Because of logistical reasons and the patient's preferences, she was shifted from hemodialysis to peritoneal dialysis

(PD). After control of bleeding and improvement of her platelet count, she was started on systemic anticoagulation using warfarin.

### Diagnosis and treatment

The diagnosis of aHUS was considered because the patient had a refractory picture of TMA with renal failure. Treatment with eculizumab was decided, as it is the only FDA-approved drug for this disorder. Molecular genetic analysis of known genes for aHUS and related disorders by next-generation sequencing was performed. The result of the molecular testing showed that the patient carries a heterozygous CFI variant, c.944G > A (p.Arg315Lys), which was the possible cause of her disorder. During admission, because of the unavailability and high cost of eculizumab, she received 46 sessions of plasma exchange (once a day initially, then reduced to three times weekly, twice weekly, once weekly, and then every 2 wk). She received meningococcal vaccine. Eculizumab was started on March 1, 2013, with induction dose of 900 mg weekly for 4 wk, 1200 mg on week 5, and then maintenance dose of 1200 mg every 2 wk. She tolerated the treatment fairly well and her condition improved, and she was discharged on April 9, 2013. Eculizumab was continued in the outpatient setting until November 2013 and was stopped because of sustained hematologic remission, steady renal function, and cost issues.



**Figure 2** Serum creatinine levels did not improve despite plasma exchange, and hemodialysis was initiated. Lactate dehydrogenase levels improved with plasma exchange, whereas the platelets showed transient improvement under the plasma exchange treatment. Treatment with eculizumab induced a persistent improvement in platelet count. Continued eculizumab treatment resulted in late renal benefit, with dialysis withdrawn in June 2015. PLEX: Plasma exchange; Scr: Serum creatinine; LDH: Lactate dehydrogenase.

### Follow-up and outcomes

In March 2014, she was admitted with PD-related peritonitis due to coagulase-negative *Staphylococcus aureus*, which responded to intraperitoneal vancomycin. Eculizumab was restarted. In April 2014, she remained anuric and dependent on dialysis, but she was in hematologic remission and eculizumab was discontinued due to cost issue. Systemic anticoagulation was also stopped, as she had completed more than 6 mo of treatment.

In June 2015, during routine follow-up in the PD clinic, she reported improving urine output, as she was oligoanuric until then, with normal platelet count and stable renal function [white blood cells (WBC):  $4.6 \times 10^9/L$ ; hemoglobin: 11.6 g/dL; platelets:  $248 \times 10^9/L$ ; urea: 3.6 mmol/L; creatinine: 174  $\mu\text{mol/L}$ ; 24-h urine collection creatinine clearance: 24 mL/min]. PD was stopped, and her kidney function remained stable with no uremic symptoms, and thus her PD catheter was removed. She was last seen in the clinic on February 2017 with no symptoms, and her laboratory investigations are as follows: WBC:  $6.1 \times 10^9/L$ ; hemoglobin: 11.8 g/dL; platelets:  $204 \times 10^9/L$ ; urea: 9.3 mmol/L; creatinine: 195  $\mu\text{mol/L}$ ; sodium: 141 mmol/L; potassium: 4.4 mmol/L; bicarbonate: 18 mmol/L; LDH 206 U/L. She continues to be healthy and in hematologic remission with stable kidney function without the need for dialysis, eculizumab, or anticoagulation. The course of events is summarized in Figure 2.

### DISCUSSION

We reported a case of a middle-aged woman with aHUS due to rare CFI mutation presenting with severe acute kidney injury. She required dialysis and remained dialysis-dependent for 32 mo. Eculizumab treatment was associated with complete hematologic remission.

Interestingly, she is now off dialysis and continues to be in remission despite not taking eculizumab for more than 3 years. There are limitations and difficulties related to the management of this case. Most importantly, the time needed to confirm the diagnosis of complement factor mutation was significant due to lack of a laboratory facility for this test. In addition, eculizumab cost and availability was a limitation against prompt and continued use. Accordingly, these might have delayed the institution of appropriate treatment and impacted the clinical response and renal recovery.

The human complement cascade can be activated through three different pathways: The classical pathway, the lectin pathway, and the alternative pathway. CFH and MCP are regulatory proteins of the alternative pathway<sup>[25]</sup>. Human CFI is a serine proteinase that cleaves the  $\alpha$  chain of C3b and plays a key role in the inhibition of the alternative pathway amplification loop, which generates C3 convertase from C3b<sup>[26]</sup>. Several familial and sporadic cases of aHUS were linked to mutations in these regulatory proteins of alternative pathway. Initially, the two complement alternative pathway proteins, CFH and MCP (CD46), have been identified to foster the development of aHUS<sup>[10,27-30]</sup>. More recently, genetic analysis in patients with aHUS with no factor H mutation demonstrated presence of CFI mutations<sup>[31]</sup>. In their novel description, Fremieux-Bacchi *et al.*<sup>[31]</sup> identified two heterozygous CFI mutations leading to a stop codon that are associated with functional deficiency in CFI. Later, more cases had been reported, and currently, CFI mutations account for 4%-10% of all cases of aHUS<sup>[32]</sup>. The clinical outcomes are characterized by high rate of renal failure, end-stage renal disease (ESRD), post-kidney transplant recurrence, and graft loss.

In a report by Waters and Licht<sup>[32,33]</sup> in 2010 and a previous cases series by Bell *et al.*<sup>[33]</sup> in 1991, 33 cases of aHUS with complete or functional deficiency



of CFI were described. The age ranges from the time of birth to 57 years, with a mean age of 19 years. Using the varying follow-up data available and before the introduction of eculizumab, the following outcomes were noted among the 33 cases: Two deaths, 74% rate of ESRD, 48% of whom underwent kidney transplantation with a recurrence rate of 82% and very high rate of graft loss after recurrence (up to 100% after first graft). Re-transplantation is associated with recurrence. The response to immunotherapy including FFP infusion with or without plasma exchange was not consistent in cases where it was reported.

Similar to patients described in literature, our patient presented with severe renal failure requiring dialysis and had remained dependent on dialysis for 32 mo. With eculizumab introduction, she developed sustained hematologic remission and later recovered some kidney function and is currently off dialysis for 18 mo, with a serum creatinine level of approximately 200  $\mu\text{mol/L}$ . Because of the unavailability and high cost of eculizumab, it was not provided for the past 3 years, but despite this, she remained in hematologic remission and off dialysis.

Cases with CFI mutation manifest increased susceptibility to infection with encapsulated organisms. Such susceptibility is linked to functional C3 deficiency as a result of uncontrolled activation of the alternative complement pathway<sup>[34]</sup>. Our patient received meningococcal vaccine upon confirmation of the diagnosis of CFI mutation. She developed one episode of hemodialysis catheter-related exit-site *Pseudomonas* infection and one episode of PD-related staphylococcal peritonitis; however, apart from this, no exceptionally increased rate of infections with encapsulated organisms was noted. The susceptibility to infections in CFI mutations might be more prominent with complete CFI deficiency than with heterozygous mutation. Additionally, the late-age presentation and continued remission despite being off eculizumab in our patient may suggest a less severe genetic defect.

Similar to our patient, several cases of eculizumab discontinuation had been described. The largest case series reported the development of TMA in 5 (31%) of 16 patients following discontinuation<sup>[35,36]</sup>. Those patients had received eculizumab for a median of 4.3 (range, 0.5-14.4) mo. In those 5 patients, relapse was identified, using regular home urine dipstick testing, within 6 mo of the last eculizumab dose. Eculizumab therapy was restarted, and it resulted in rapid improvement in serum creatinine levels and proteinuria.

In an attempt to address the possibility and safety of eculizumab discontinuation, Macia *et al.*<sup>[37]</sup> studied the demographics, disease characteristics, and outcomes of aHUS cases in whom eculizumab was discontinued. The post-discontinuation follow-

up ranged from few days to 17 mo. According to the data collected from cases reports, TMA developed in 16 (31%) of 52 cases who discontinued the drug after multiple doses and in 4 (80%) of 5 cases who discontinued the drug after a single dose. TMA development was found to be higher with a single dose of eculizumab, and hence, current evidence does not support single-dose eculizumab.

According to the data collected from eculizumab clinical trials, TMA developed in 12 (20%) of 61 patients during a median post-discontinuation follow-up of 24 wk<sup>[37]</sup>. The median time to TMA development was 13 (range, 4-127) wk. Three patients progressed to ESRD. The authors compared patients who experienced relapse ( $n = 12$ ) to those who did not ( $n = 49$ ) post-discontinuation across several demographic and disease characteristics. No particular trend to predict TMA development was noted with regard to sex, identified complement mutation or antibody, time from diagnosis to start of eculizumab, duration on eculizumab treatment, kidney function and dialysis (at the time of initial treatment and discontinuation), and kidney status (native versus transplant)<sup>[37]</sup>. However, compared with patients who experienced no relapse, there was a trend to a lower median age (19.5 vs 27 years) and a higher proportion of CFI mutation (42% vs 18%) among those who experienced relapse. It had been noted that the use of functional tests of complement activity and measurement of complement proteins to predict development of TMA is of limited value<sup>[37]</sup>. The authors concluded that the development of TMA following eculizumab discontinuation is unpredictable.

To our knowledge, this is the first case of aHUS due to heterozygous CFI variant c.944G > A (p.Arg315Lys) reported in Saudi Arabia. Several lessons can be learned from our case and similar cases. Although rarely reported, it is important to keep a high index of suspicion for such severe disease when acute kidney injury presents with unexplained microangiopathic anemia. In such presentations, the severity of renal disease, lack of significant neurologic symptoms, and absence of diarrhea make aHUS the likely clinical diagnosis. In addition, a renal benefit with discontinuation of dialysis was possible in our case despite relatively late initiation of eculizumab and prolonged period of dialysis-dependent kidney disease. Lastly, although eculizumab discontinuation was possible in our patient and seems to be safe in some other reported cases during the reported follow-up periods, predicting the risk of TMA development remains difficult. Therefore, informed decision-making requires a more comprehensive collection of data on eculizumab discontinuation and finding a more sensitive tool to monitor complement activation and disease activity.

## ARTICLE HIGHLIGHTS

### Case characteristics

A middle age woman who presented with acute kidney injury (AKI) and features of thrombotic microangiopathy (TMA).

### Clinical diagnosis

TMA, most likely atypical hemolytic uremic syndrome.

### Differential diagnosis

Causes of TMA with AKI: hemolytic uremic syndrome, thrombotic thrombocytopenic purpura (primary and secondary causes).

### Laboratory diagnosis

Thrombocytopenia, elevated lactate dehydrogenase, schistocytes on peripheral blood film, acute kidney injury with normal coagulation profile and complement factor I mutation on genetic testing.

### Imaging diagnosis

Computer tomography to exclude underlying malignancy as secondary causes.

### Pathological diagnosis

Renal biopsy showing features of TMA with renal cortical necrosis, and acute tubular necrosis.

### Treatment

Plasma exchange, dialysis and eculizumab.

### Related reports

Previous cases of aHUS showing remission with initiation of eculizumab and maintenance of remission despite its discontinuation.

### Term explanation

AKI: Acute kidney injury; aHUS: Atypical hemolytic uremic syndrome; CFH: Complement factor H; CFI: Complement factor I; MCP: Membrane co-factor protein; PLEX: Plasma exchange; TMA: Thrombotic microangiopathy; TTP: Thrombotic thrombocytopenic purpura.

### Experiences and lessons

aHUS is a serious diagnosis that requires a high index of suspicion in cases presenting with unexplained AKI associated with microangiopathy. Renal benefit of eculizumab may be seen even with late initiation of the drug.

## ACKNOWLEDGMENTS

The authors acknowledge and thank the staff of the Pathology Laboratory for their contribution in obtaining the renal biopsy slide pictures and the staff of the Laboratory Department for their contribution in tracking the full genetic analysis report, which was done outside the country.

## REFERENCES

- George JN, Nester CM. Syndromes of thrombotic microangiopathy. *N Engl J Med* 2014; **371**: 654-666 [PMID: 25119611 DOI: 10.1056/NEJMr1312353]
- Moake JL. Thrombotic microangiopathies. *N Engl J Med* 2002; **347**: 589-600 [PMID: 12192020 DOI: 10.1056/NEJMr020528]
- Noris M, Remuzzi G. Atypical hemolytic-uremic syndrome. *N Engl J Med* 2009; **361**: 1676-1687 [PMID: 19846853 DOI: 10.1056/NEJMr0902814]
- Loirat C, Frémeaux-Bacchi V. Atypical hemolytic uremic syndrome. *Orphanet J Rare Dis* 2011; **6**: 1 [PMID: 21902819 DOI: 10.1186/1750-1172-6-60]
- Kavanagh D, Goodship TH. Update on evaluating complement in hemolytic uremic syndrome. *Curr Opin Nephrol Hypertens* 2007; **16**: 565-571 [PMID: 18089972 DOI: 10.1097/MNH.0b013e3282f0872f]
- Noris M, Caprioli J, Bresin E, Mossali C, Pianetti G, Gamba S, Daina E, Fenili C, Castelletti F, Sorosina A, Piras R, Donadelli R, Maranta R, van der Meer I, Conway EM, Zipfel PF, Goodship TH, Remuzzi G. Relative role of genetic complement abnormalities in sporadic and familial aHUS and their impact on clinical phenotype. *Clin J Am Soc Nephrol* 2010; **5**: 1844-1859 [PMID: 20595690 DOI: 10.2215/CJN.02210310]
- Dragon-Durey M-A, Loirat C, Cloarec S, Macher M-A, Blouin J, Nivet H, Weiss L, Fridman WH, Frémeaux-Bacchi V. Anti-factor H autoantibodies associated with atypical hemolytic uremic syndrome. *J Am Soc Nephrol* 2005; **16**: 555-563 [PMID: 15590760 DOI: 10.1681/ASN.2004050380]
- Caprioli J, Noris M, Brioschi S, Pianetti G, Castelletti F, Bettinaglio P, Mele C, Bresin E, Cassis L, Gamba S, Porrati F, Bucchioni S, Monteferrante G, Fang CJ, Liszewski MK, Kavanagh D, Atkinson JP, Remuzzi G; International Registry of Recurrent and Familial HUS/TTP. Genetics of HUS: the impact of MCP, CFH, and IF mutations on clinical presentation, response to treatment, and outcome. *Blood* 2006; **108**: 1267-1279 [PMID: 16621965 DOI: 10.1182/blood-2005-10-007252]
- Pérez-Caballero D, González-Rubio C, Gallardo ME, Vera M, Lopez-Trascasa M, de Córdoba SR, Sánchez-Corral P. Clustering of missense mutations in the C-terminal region of factor H in atypical hemolytic uremic syndrome. *Am J Hum Genet* 2001; **68**: 478-484 [PMID: 11170895 DOI: 10.1086/318201]
- Warwicker P, Goodship TH, Donne RL, Pirson Y, Nicholls A, Ward RM, Turnpenny P, Goodship JA. Genetic studies into inherited and sporadic hemolytic uremic syndrome. *Kidney Int* 1998; **53**: 836-844 [PMID: 9551389 DOI: 10.1111/j.1523-1755.1998.00824.x]
- Noris M, Brioschi S, Caprioli J, Todeschini M, Bresin E, Porrati F, Gamba S, Remuzzi G; International Registry of Recurrent and Familial HUS/TTP. Familial haemolytic uraemic syndrome and an MCP mutation. *Lancet* 2003; **362**: 1542-1547 [PMID: 14615110 DOI: 10.1016/S0140-6736(03)14742-3]
- Kavanagh D, Goodship TH, Richards A. Atypical haemolytic uraemic syndrome. *Br Med Bull* 2006; **77**: 5-22 [PMID: 16968692 DOI: 10.1093/bmb/ldl004]
- Kavanagh D, Kemp EJ, Mayland E, Winney RJ, Duffield JS, Warwick G, Richards A, Ward R, Goodship JA, Goodship TH. Mutations in complement factor I predispose to development of atypical hemolytic uremic syndrome. *J Am Soc Nephrol* 2005; **16**: 2150-2155 [PMID: 15917334 DOI: 10.1681/ASN.2005010103]
- Frémeaux-Bacchi V, Fakhouri F, Garnier A, Bienaimé F, Dragon-Durey M-A, Ngo S, Moulin B, Servais A, Provot F, Rostaing L, Burtey S, Niaudet P, Deschênes G, Lebranchu Y, Zuber J, Loirat C. Genetics and outcome of atypical hemolytic uremic syndrome: a nationwide French series comparing children and adults. *Clin J Am Soc Nephrol* 2013; **8**: 554-562 [PMID: 23307876 DOI: 10.2215/CJN.04760512]
- Noris M, Remuzzi G. Hemolytic uremic syndrome. *J Am Soc Nephrol* 2005; **16**: 1035-1050 [PMID: 15728781 DOI: 10.1681/ASN.2004100861]
- Campistol JM, Arias M, Ariceta G, Blasco M, Espinosa L, Espinosa M, Grinyó JM, Praga M, Torra R, Vilalta R, Rodríguez de Córdoba S. An update for atypical haemolytic uraemic syndrome: diagnosis and treatment. A consensus document. *Nefrología (Engl Ed)* 2015; **35**: 421-447 [PMID: 23364625 DOI: 10.3265/Nefrologia.pre2012.Nov.11781]
- Nayer A, Asif A. Atypical hemolytic-uremic syndrome: a clinical review. *Am J Ther* 2016; **23**: e151-e158 [PMID: 24681522 DOI: 10.1097/MJT.0b013e31829b59dc]
- Geerdink LM, Westra D, van Wijk JA, Dorresteyn EM, Lilien MR, Davin J-C, Kömhoff M, Van Hoeck K, van der Vlugt A, van den Heuvel LP, van de Kar NC. Atypical hemolytic uremic syndrome in children: complement mutations and clinical characteristics. *Pediatr Nephrol* 2012; **27**: 1283-1291 [PMID: 22410797 DOI: 10.1007/s00467-012-2131-y]

- 19 **Neuhaus TJ**, Calonder S, Leumann EP. Heterogeneity of atypical haemolytic uraemic syndromes. *Arch Dis Childhood* 1997; **76**: 518-521 [PMID: 9245850 DOI: 10.1136/adc.76.6.518]
- 20 **Sellier-Leclerc A-L**, Fremeaux-Bacchi V, Dragon-Durey M-A, Macher M-A, Niaudet P, Guest G, Boudailliez B, Bouissou F, Deschenes G, Gie S, Tsimaratos M, Fischbach M, Morin D, Nivet H, Alberti C, Loirat C; French Society of Pediatric Nephrology. Differential impact of complement mutations on clinical characteristics in atypical hemolytic uremic syndrome. *J Am Soc Nephrol* 2007; **18**: 2392-2400 [PMID: 17599974 DOI: 10.1681/ASN.2006080811]
- 21 **Thomas TC**, Rollins SA, Rother RP, Giannoni MA, Hartman SL, Elliott EA, Nye SH, Matis LA, Squinto SP, Evans MJ. Inhibition of complement activity by humanized anti-C5 antibody and single-chain Fv. *Mol Immunol* 1996; **33**: 1389-1401 [PMID: 9171898]
- 22 **Fakhouri F**, Hourmant M, Campistol JM, Cataland SR, Espinosa M, Gaber AO, Menne J, Minetti EE, Provôt F, Rondeau E, Ruggenti P, Weekers LE, Ogawa M, Bedrosian CL, Legendre CM. Terminal complement inhibitor eculizumab in adult patients with atypical hemolytic uremic syndrome: a single-arm, open-label trial. *Am J Kidney Dis* 2016; **68**: 84-93 [PMID: 27012908 DOI: 10.1053/j.ajkd.2015.12.034]
- 23 **Legendre CM**, Licht C, Muus P, Greenbaum L, Babu S, Bedrosian C, Bingham C, Cohen DJ, Delmas Y, Douglas K, Eitner F, Feldkamp T, Fouque D, Furman RR, Gaber O, Herthelius M, Hourmant M, Karpman D, Lebranchu Y, Mariat C, Menne J, Moulin B, Nürnberger J, Ogawa M, Remuzzi G, Richard T, Sberro-Soussan R, Severino B, Sheerin NS, Trivelli A, Zimmerhackl LB, Goodship T, Loirat C. Terminal complement inhibitor eculizumab in atypical hemolytic-uremic syndrome. *N Engl J Med* 2013; **368**: 2169-2181 [PMID: 23738544 DOI: 10.1056/NEJMoa1208981]
- 24 **Licht C**, Greenbaum LA, Muus P, Babu S, Bedrosian CL, Cohen DJ, Delmas Y, Douglas K, Furman RR, Gaber OA, Goodship T, Herthelius M, Hourmant M, Legendre CM, Remuzzi G, Sheerin N, Trivelli A, Loirat C. Efficacy and safety of eculizumab in atypical hemolytic uremic syndrome from 2-year extensions of phase 2 studies. *Kidney Int* 2015; **87**: 1061-1073 [PMID: 25651368 DOI: 10.1038/ki.2014.423]
- 25 **Walport MJ**. Complement. *N Engl J Med* 2001; **344**: 1058-1066 [PMID: 11287977 DOI: 10.1056/NEJM200104053441406]
- 26 **DiScipio R**. Ultrastructures and interactions of complement factors H and I. *J Immunol* 1992; **149**: 2592-2599 [PMID: 1401896]
- 27 **Richards A**, Kemp EJ, Liszewski MK, Goodship JA, Lampe AK, Decorte R, Müslümanogğlu MH, Kavukcu S, Filler G, Pirson Y, Wen LS, Atkinson JP, Goodship THJ. Mutations in human complement regulator, membrane cofactor protein (CD46), predispose to development of familial hemolytic uremic syndrome. *Proc Natl Acad Sci USA* 2003; **100**: 12966-12971 [PMID: 14566051 DOI: 10.1073/pnas.2135497100]
- 28 **Rougier N**, Kazatchkine MD, Rougier J-P, Fremeaux-Bacchi V, Blouin J, Deschenes G, Soto B, Baudouin V, Pautard B, Proesmans W, Weiss E, Weiss L. Human complement factor H deficiency associated with hemolytic uremic syndrome. *J Am Soc Nephrol* 1998; **9**: 2318-2326 [PMID: 9848786]
- 29 **Thompson R**, Winterborn M. Hypocomplementaemia due to a genetic deficiency of beta 1H globulin. *Clin Exp Immunol* 1981; **46**: 110 [PMID: 6461451]
- 30 **Ying L**, Katz Y, Schlesinger M, Carmi R, Shalev H, Haider N, Beck G, Sheffield VC, Landau D. Complement factor H gene mutation associated with autosomal recessive atypical hemolytic uremic syndrome. *Am J Hum Genet* 1999; **65**: 1538-1546 [PMID: 10577907 DOI: 10.1086/302673]
- 31 **Fremeaux-Bacchi V**, Dragon-Durey M, Blouin J, Vigneau C, Kuypers D, Boudailliez B, Loirat C, Rondeau E, Fridman WH. Complement factor I: a susceptibility gene for atypical haemolytic uraemic syndrome. *J Med Genet* 2004; **41**: e84 [PMID: 15173250]
- 32 **Waters AM**, Licht C. aHUS caused by complement dysregulation: new therapies on the horizon. *Pediatr Nephrol* 2011; **26**: 41-57 [PMID: 20556434 DOI: 10.1007/s00467-010-1556-4]
- 33 **Bell WR**, Braine HG, Ness PM, Kickler TS. Improved survival in thrombotic thrombocytopenic purpura-hemolytic uremic syndrome: clinical experience in 108 patients. *N Engl J Med* 1991; **325**: 398-403 [PMID: 2062331 DOI: 10.1056/NEJM199108083250605]
- 34 **Vyse TJ**, Morley BJ, Bartók I, Theodoridis EL, Davies KA, Webster A, Walport MJ. The molecular basis of hereditary complement factor I deficiency. *J Clin Invest* 1996; **97**: 925 [PMID: 8613545 DOI: 10.1172/JCI118515]
- 35 **Ardissino G**, Possenti I, Tel F, Testa S, Salardi S, Ladisa V. Discontinuation of eculizumab treatment in atypical hemolytic uremic syndrome: an update. *Am J Kidney Dis* 2015; **66**: 172-173 [PMID: 26111906 DOI: 10.1053/j.ajkd.2015.04.010]
- 36 **Ardissino G**, Testa S, Possenti I, Tel F, Paglialonga F, Salardi S, Tedeschi S, Belingheri M, Cugno M. Discontinuation of eculizumab maintenance treatment for atypical hemolytic uremic syndrome: a report of 10 cases. *Am J Kidney Dis* 2014; **64**: 633-737 [PMID: 24656451 DOI: 10.1053/j.ajkd.2014.01.434]
- 37 **Macia M**, de Alvaro Moreno F, Dutt T, Fehrman I, Hadaya K, Gasteyger C, Heyne N. Current evidence on the discontinuation of eculizumab in patients with atypical haemolytic uraemic syndrome. *Clin Kidney J* 2017; **10**: 310-319 [PMID: 28621343 DOI: 10.1093/ckj/sfw115]

**P-Reviewer:** Chang CC, Watanabe T **S-Editor:** Cui LJ

**L-Editor:** A **E-Editor:** Zhao LM





Published by **Baishideng Publishing Group Inc**  
7901 Stoneridge Drive, Pleasanton, CA 94588, USA  
Telephone: +1-925-223-8242  
Fax: +1-925-223-8243  
E-mail: [bpgoffice@wjgnet.com](mailto:bpgoffice@wjgnet.com)  
Help Desk: <http://www.f6publishing.com/helpdesk>  
<http://www.wjgnet.com>

