

Supplementary table 1 Baseline characteristics of patients with left-sided colorectal cancer and right-sided colon cancer after propensity score matching

	LSCRC			RSCC		
	TCM <i>n</i> = 200	Non-TC M <i>n</i> = 200	<i>P</i> -value	TCM <i>n</i> = 65	Non-TCM <i>n</i> = 65	<i>P</i> -value
Gender			0.919			0.480
Man	116	117		31	27	
Woman	84	83		34	38	
Age (yr)			0.052			1.000
< 60	88	69		17	17	
≥ 60	112	131		48	48	
Histodifferentiation			0.650			0.986
Poorly	13	19		9	8	
Moderately	121	116		32	34	
Well	5	7		2	2	
Unknown	61	58		22	21	
Lympho node metastasis			0.353			0.860
Yes	80	71		28	29	
No	120	129		37	36	
TNM stage			0.559			0.962
I	29	36		9	8	
II	88	89		27	28	
III	83	75		29	29	
Chemotherapy			0.817			0.571
Yes	151	149		46	43	
No	49	51		19	22	

Radiotherapy			0.014 ^a		1.000
Yes	36	19	1	1	
No	164	181	64	64	
Diabetes			0.788		0.795
Yes	34	32	8	9	
No	166	168	57	56	
Hypertension			0.066		0.070
Yes	88	70	12	21	
No	112	130	53	44	
Heart disease			0.249		0.510
Yes	32	24	4	6	
No	168	176	61	59	
Stroke			0.433		1.000
Yes	16	12	1	2	
no	184	188	64	63	

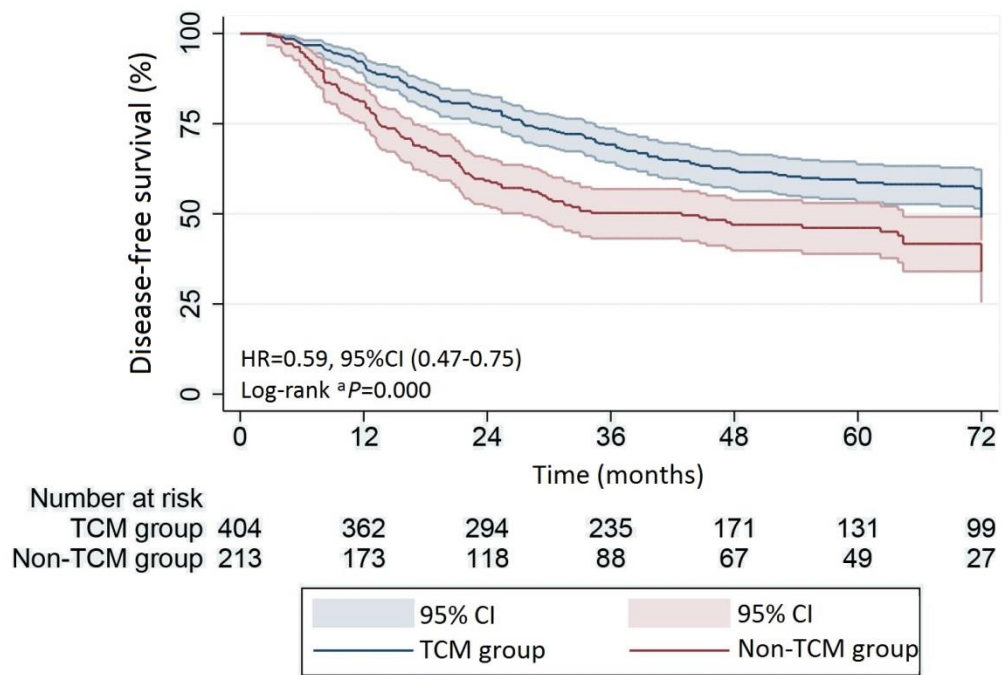
LSCRC: Left-sided colorectal cancer; RSCC: Right-sided colon cancer. ^a*P* < 0.05 statistical difference.

Supplementary table 2 Baseline characteristics of patients in traditional Chinese medicine group and non-traditional Chinese medicine group after propensity score matching

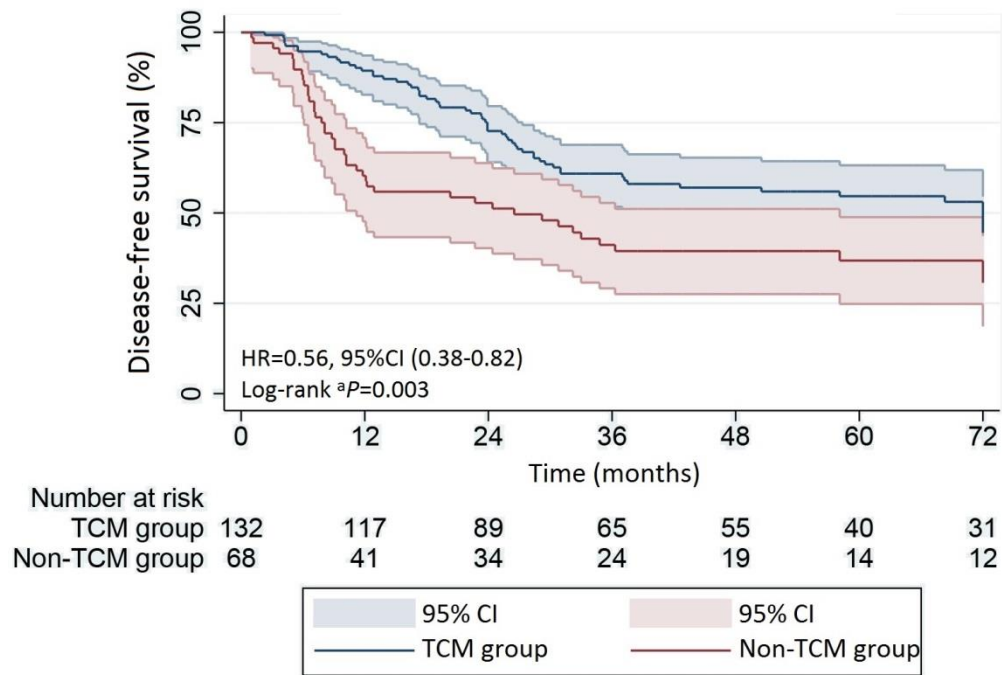
	TCM			Non-TCM		
	LSCR	RSC	<i>P</i> -value	LSCR	RSC	<i>P</i> -value
	C	C		C	C	
	<i>n</i> = 251	<i>n</i> = 128		<i>n</i> = 112	<i>n</i> = 61	
Gender			0.528			0.193
Man	113	62		63	28	
Woman	138	66		49	33	
Age (yr)			0.506			0.979
< 60	89	41		31	17	
≥ 60	162	87		81	44	
Histodifferentiation			0.329			0.971
Poorly	33	18		8	5	
Moderately	154	77		64	34	
Well	4	6		5	2	
Unknown	60	27		35	20	
Lympho node metastasis			0.702			0.669
Yes	115	56		44	26	
No	136	72		68	35	
TNM stage			0.885			0.766
I	34	19		17	7	
II	99	52		47	28	
III	118	57		48	26	
Chemotherapy			0.676			0.425
Yes	195	97		80	40	

No	56	31	32	21	
Radiotherapy			0.582		0.757
Yes	13	5	0	1	
No	238	123	112	60	
Diabetes			0.813		0.057
Yes	35	19	8	10	
No	216	109	104	51	
Hypertension			0.983		0.778
Yes	86	44	38	22	
No	165	84	74	39	
Heart disease			0.392		0.979
Yes	19	13	13	7	
No	232	115	99	54	
Stroke			0.710		1.000
Yes	17	10	5	2	
no	234	118	107	59	

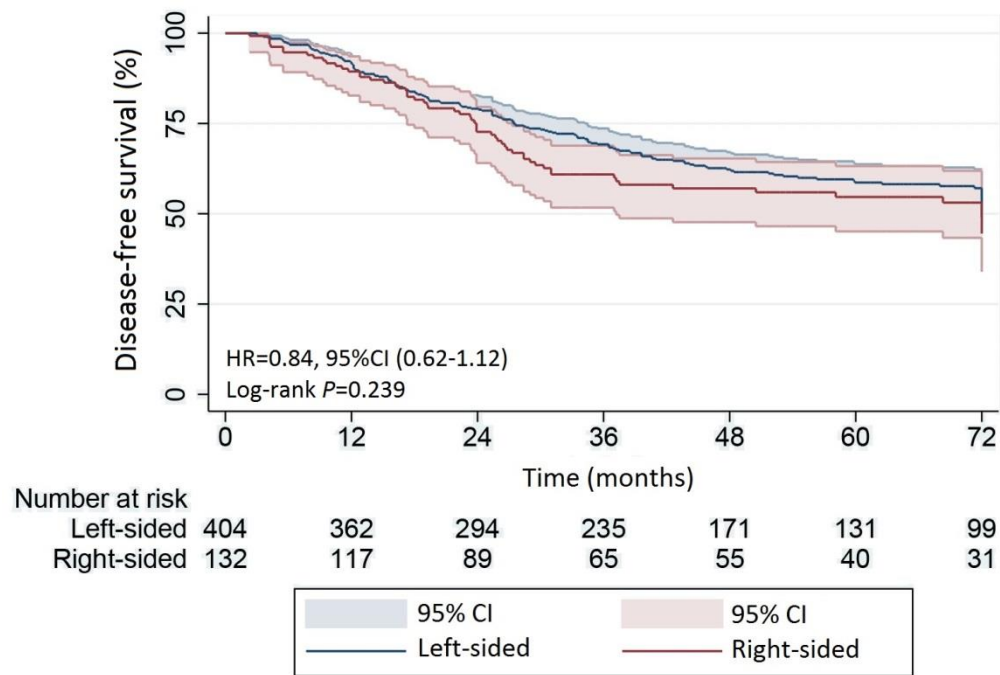
LSCRC: Left-sided colorectal cancer; RSCC: Right-sided colon cancer. ^a*P* < 0.05 statistical difference.



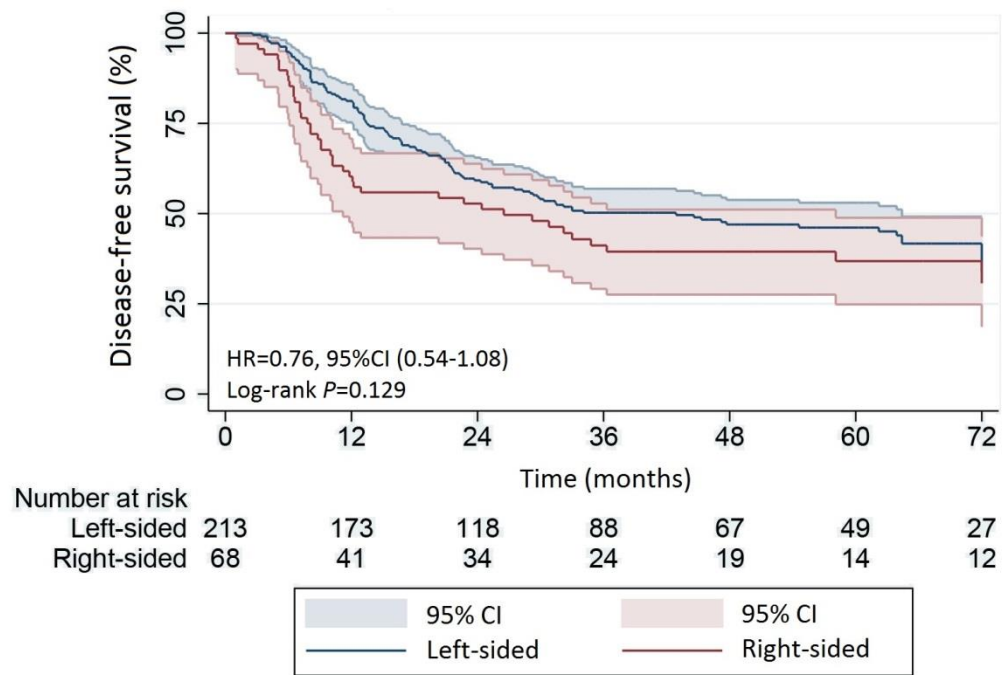
Supplementary Figure 1 Kaplan-Meier disease-free survival curves for patients with stage I-III left-sided colorectal cancer. Pointwise confidence bands are 95% CIs.



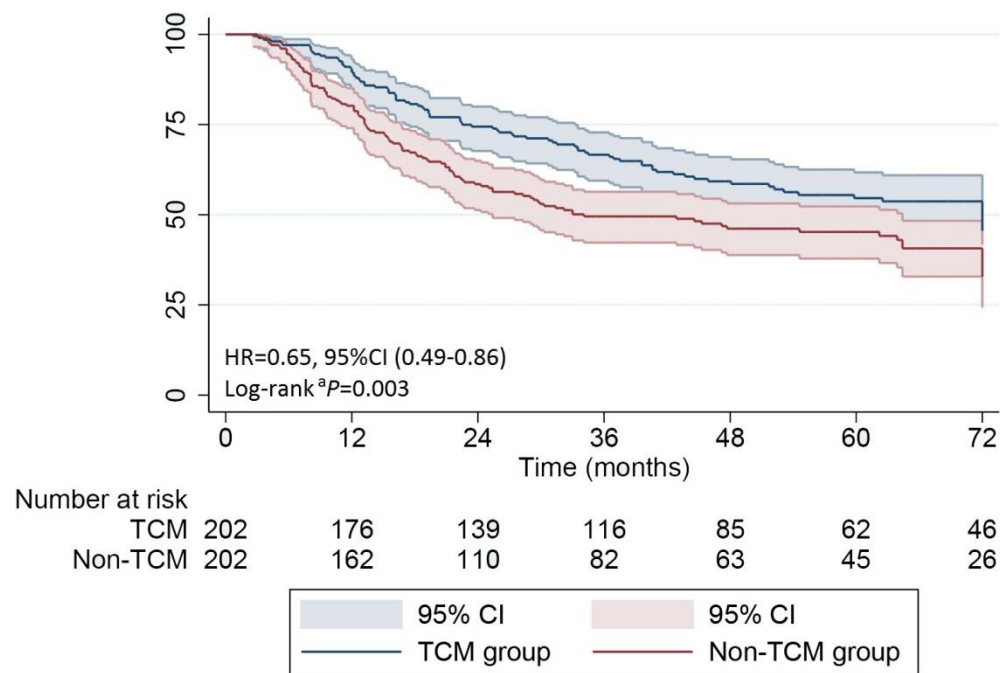
Supplementary Figure 2 Kaplan-Meier disease-free survival curves for patients with stage I-III right-sided colon cancer. Pointwise confidence bands are 95% CIs.



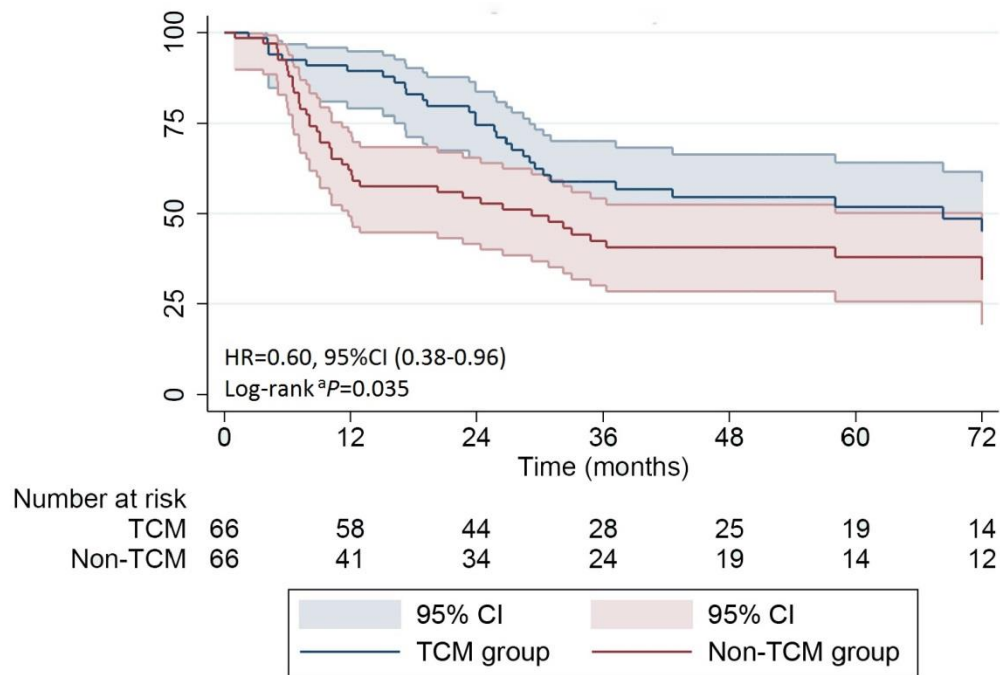
Supplementary Figure 3 Kaplan-Meier disease-free survival curves for patients with traditional Chinese medicine administration. Pointwise confidence bands are 95% CIs.



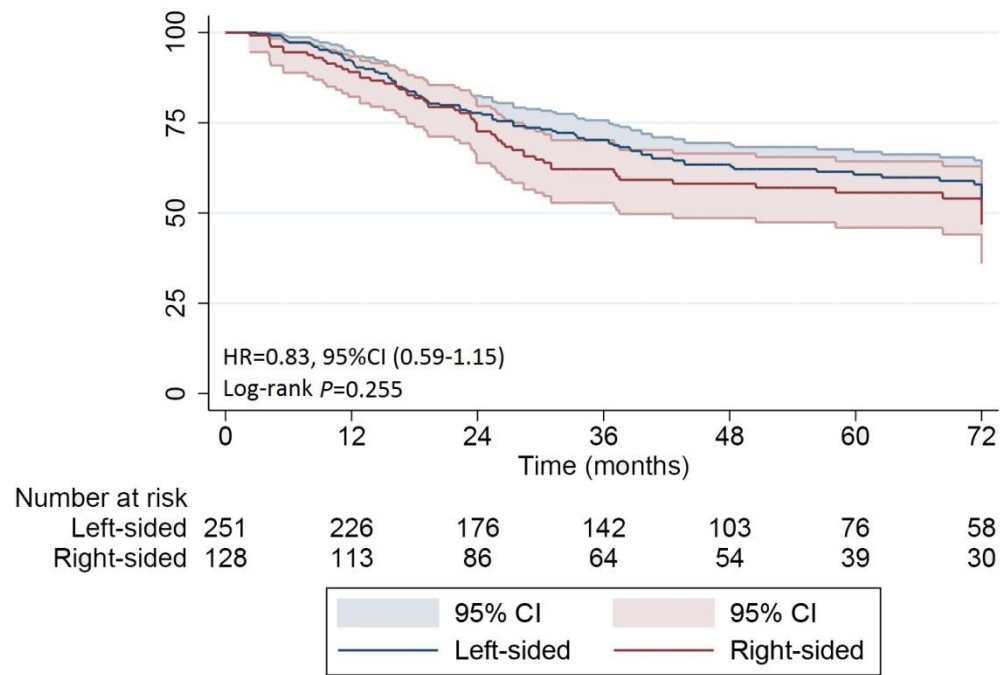
Supplementary Figure 4 Kaplan-Meier disease-free survival curves for patients without traditional Chinese medicine administration. Pointwise confidence bands are 95% CIs.



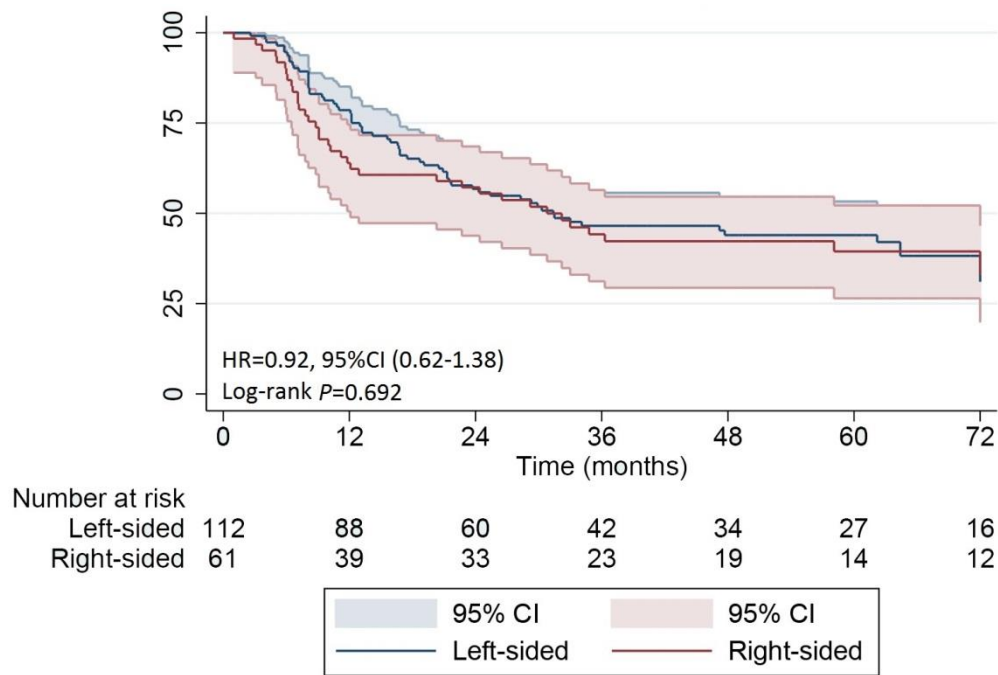
Supplementary Figure 5 Kaplan-Meier disease-free survival curves for patients with stage I- III left-sided colorectal cancer after propensity score matching. Pointwise confidence bands are 95% CIs.



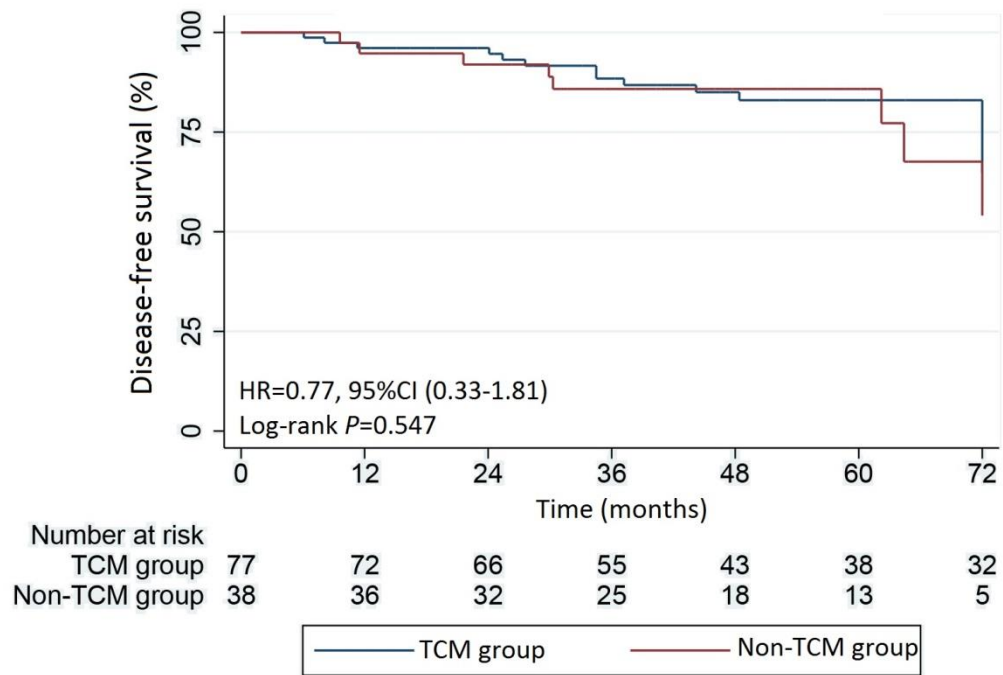
Supplementary Figure 6 Kaplan-Meier disease-free survival curves for patients with stage I-III right-sided colon cancer after propensity score matching. Pointwise confidence bands are 95% CIs.



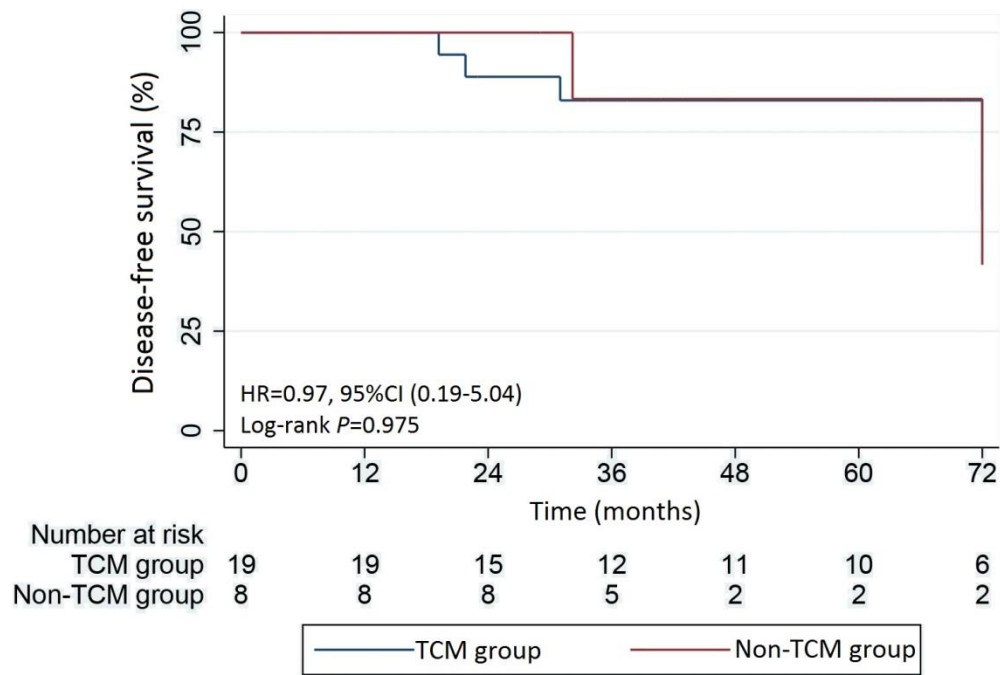
Supplementary Figure 7 Kaplan-Meier disease-free survival curves for patients with traditional Chinese medicine administration after propensity score matching. Pointwise confidence bands are 95% CIs.



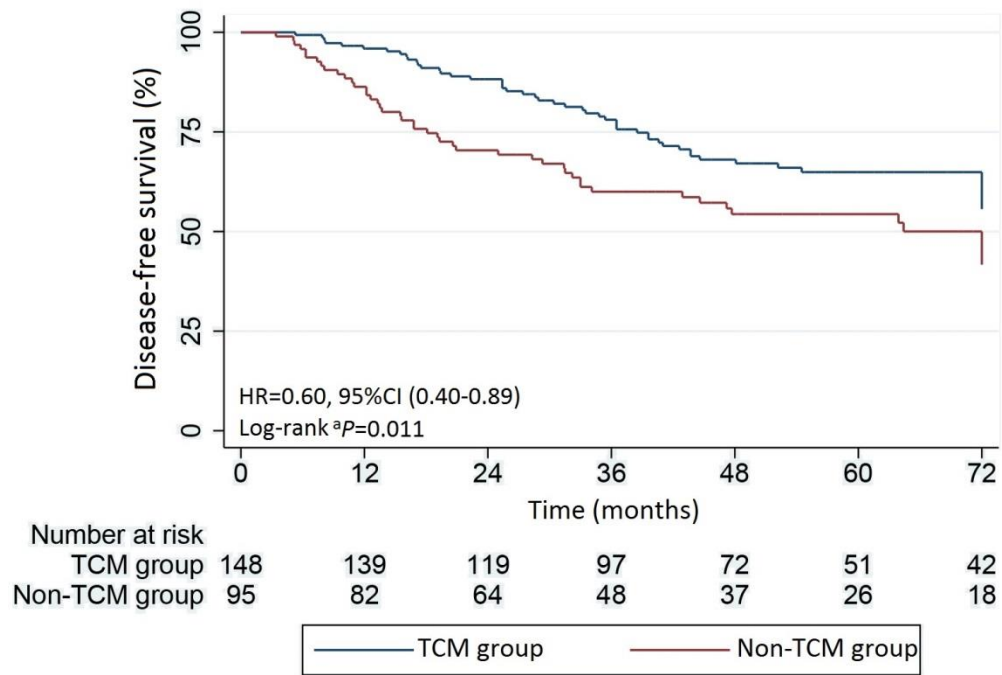
Supplementary Figure 8 Kaplan-Meier disease-free survival curves for patients without traditional Chinese medicine administration after propensity score matching. Pointwise confidence bands are 95% CIs.



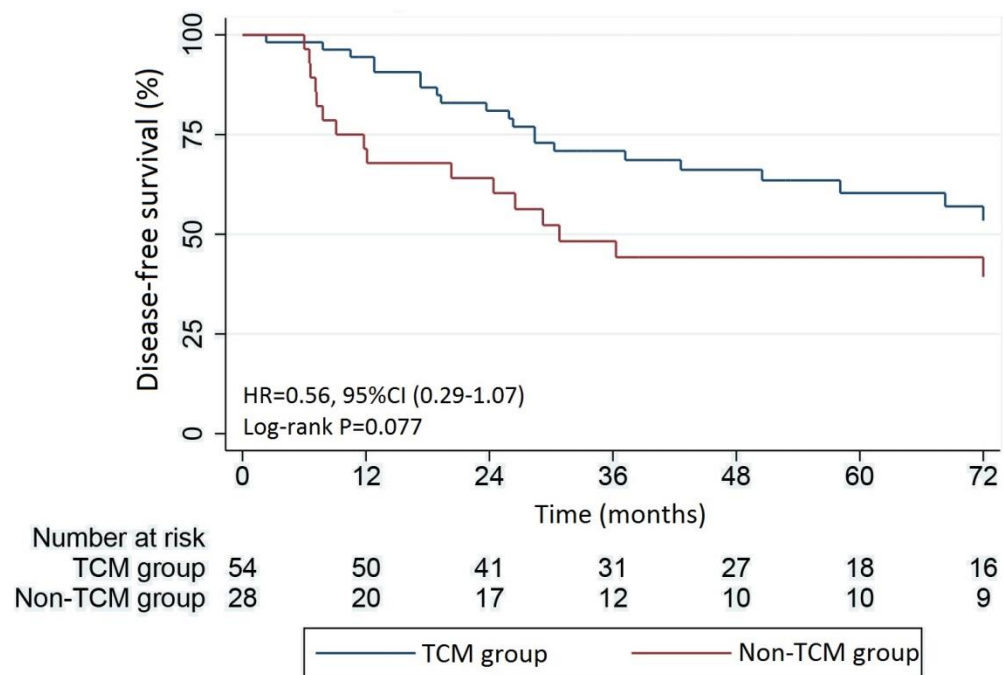
Supplementary Figure 9 Kaplan-Meier disease-free survival curves for patients with stage I left-sided colorectal cancer.



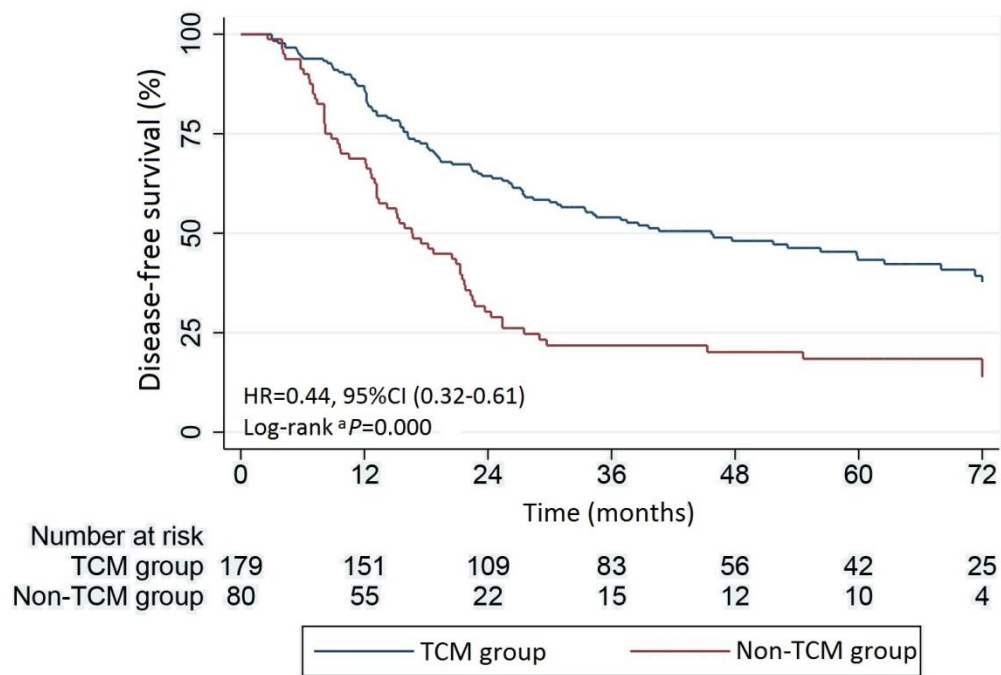
Supplementary Figure 10 Kaplan-Meier disease-free survival curves for patients with stage I right-sided colon cancer.



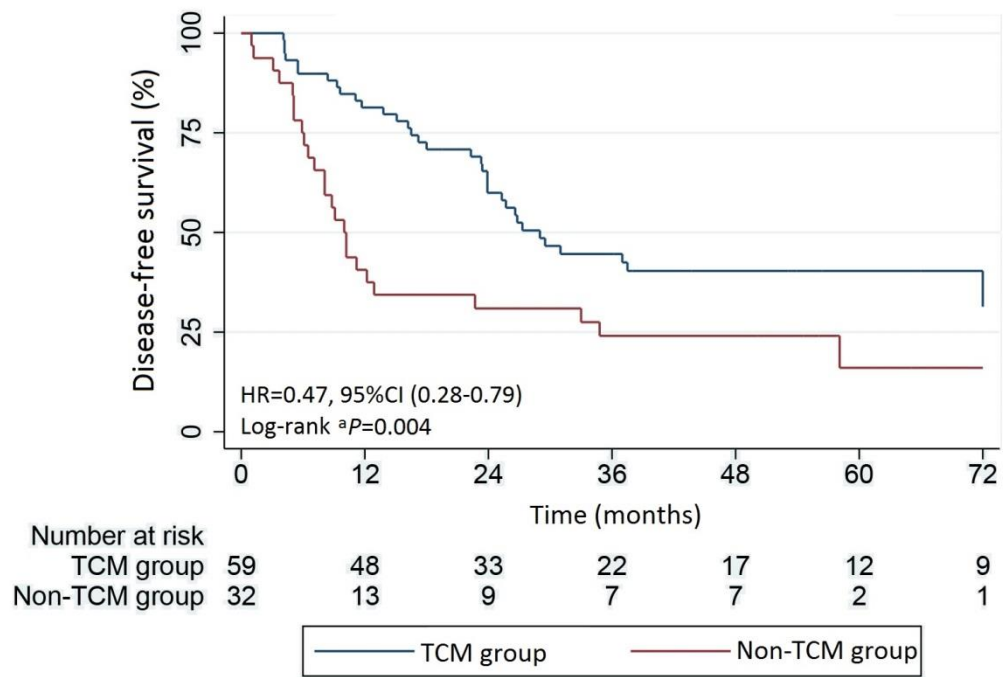
Supplementary Figure 11 Kaplan-Meier disease-free survival curves for patients with stage II left-sided colorectal cancer.



Supplementary Figure 12 Kaplan-Meier disease-free survival curves for patients with stage II right-sided colon cancer.



Supplementary Figure 13 Kaplan-Meier disease-free survival curves for patients with stage III left-sided colorectal cancer.



Supplementary Figure 14 Kaplan-Meier disease-free survival curves for patients with stage III right-sided colon cancer.

Coefficients ^a								
		Unstandardized Coefficients		Standardized Coefficients			Collinearity Statistics	
		B	Std. Error	Beta			Tolerance	VIF
1	(Constant)	57.793	3.961		14.589	.000		
	Histodifferentiation	.549	.930	.023	.591	.555	.970	1.031
	TNM	-8.624	1.235	-.274	-6.982	.000	.970	1.031

a. Dependent Variable: DFS

Supplementary Figure 15 Multivariate regression analyses for left-sided colorectal cancer group.

Coefficients ^a							
Model	Unstandardized Coefficients		Standardized Coefficients	t	Sig.	Collinearity Statistics	
	B	Std. Error	Beta			Tolerance	VIF
1 (Constant)	66.498	7.644		8.699	.000		
Histodifferentiation	-1.319	1.671	-.054	-.790	.431	.972	1.028
TNM	-11.240	2.422	-.318	-4.640	.000	.972	1.028

a. Dependent Variable: DFS

Supplementary Figure 16 Multivariate regression analyses for right-sided colon cancer group.