

World Journal of *Diabetes*

World J Diabetes 2018 January 15; 9(1): 1-52



**REVIEW**

- 1 Cardiac autonomic neuropathy: Risk factors, diagnosis and treatment
Serhiyenko VA, Serhiyenko AA

ORIGINAL ARTICLE**Basic Study**

- 25 Short-term effects of obestatin on hexose uptake and triacylglycerol breakdown in human subcutaneous adipocytes
Carpéné C, Les F, Estève D, Galitzky J

Observational Study

- 33 Heart rate is an independent predictor of all-cause mortality in individuals with type 2 diabetes: The diabetes heart study
Prasada S, Oswalt C, Yeboah P, Saylor G, Bowden D, Yeboah J

META-ANALYSIS

- 40 Association of obesity with hypertension and type 2 diabetes mellitus in India: A meta-analysis of observational studies
Babu GR, Murthy GVS, Ana Y, Patel P, Deepa R, Benjamin-Neelon SE, Kinra S, Reddy KS

ABOUT COVER

Editorial Board Member of *World Journal of Diabetes*, Dr. Adejuwon A Adeneye, MD, PhD, Department of Pharmacology, Faculty of Basic Medical Sciences, Lagos State University College of Medicine, Ikeja 100001, Nigeria

AIM AND SCOPE

World Journal of Diabetes (*World J Diabetes*, *WJD*, online ISSN 1948-9358, DOI: 10.4239), is a peer-reviewed open access academic journal that aims to guide clinical practice and improve diagnostic and therapeutic skills of clinicians.

WJD covers topics concerning α , β , δ and PP cells of the pancreatic islet, the effect of insulin and insulinresistance, pancreatic islet transplantation, adipose cells and obesity.

We encourage authors to submit their manuscripts to *WJD*. We will give priority to manuscripts that are supported by major national and international foundations and those that are of great clinical significance.

INDEXING/ABSTRACTING

World Journal of Diabetes is now indexed in Emerging Sources Citation Index (Web of Science), PubMed, PubMed Central, and Scopus.

EDITORS FOR THIS ISSUE

Responsible Assistant Editor: *Xiang Li*
Responsible Electronic Editor: *Ya-Jing Lu*
Proofing Editor-in-Chief: *Lian-Sheng Ma*

Responsible Science Editor: *Li-Jun Cui*
Proofing Editorial Office Director: *Xiu-Xia Song*

NAME OF JOURNAL

World Journal of Diabetes

ISSN

ISSN 1948-9358 (online)

LAUNCH DATE

June 15, 2010

FREQUENCY

Monthly

EDITORS-IN-CHIEF

Lu Qi, MD, PhD, Assistant Professor, Department of Nutrition, Harvard School of Public Health, Boston, MA 02115, United States

Jingbo Zhao, PhD, Associate Professor, Aalborg Hospital Science and Innovation Centre, Aalborg Hospital, Aarhus University Hospital, Aalborg 9000, Denmark

EDITORIAL BOARD MEMBERS

All editorial board members resources online at <http://www.wjgnet.com/1948-9358/editorialboard.htm>

EDITORIAL OFFICE

Xiu-Xia Song, Director
World Journal of Diabetes
Baishideng Publishing Group Inc
7901 Stoneridge Drive, Suite 501,
Pleasanton, CA 94588, USA
Telephone: +1-925-2238242
Fax: +1-925-2238243
E-mail: editorialoffice@wjgnet.com
Help Desk: <http://www.f6publishing.com/helpdesk>
<http://www.wjgnet.com>

PUBLISHER

Baishideng Publishing Group Inc
7901 Stoneridge Drive, Suite 501,
Pleasanton, CA 94588, USA
Telephone: +1-925-2238242
Fax: +1-925-2238243
E-mail: bpgoffice@wjgnet.com
Help Desk: <http://www.f6publishing.com/helpdesk>
<http://www.wjgnet.com>

PUBLICATION DATE

January 15, 2018

COPYRIGHT

© 2018 Baishideng Publishing Group Inc. Articles published by this Open-Access journal are distributed under the terms of the Creative Commons Attribution Non-commercial License, which permits use, distribution, and reproduction in any medium, provided the original work is properly cited, the use is non-commercial and is otherwise in compliance with the license.

SPECIAL STATEMENT

All articles published in journals owned by the Baishideng Publishing Group (BPG) represent the views and opinions of their authors, and not the views, opinions or policies of the BPG, except where otherwise explicitly indicated.

INSTRUCTIONS TO AUTHORS

<http://www.wjgnet.com/bpg/gerinfo/204>

ONLINE SUBMISSION

<http://www.f6publishing.com>

Association of obesity with hypertension and type 2 diabetes mellitus in India: A meta-analysis of observational studies

Giridhara R Babu, GVS Murthy, Yamuna Ana, Prital Patel, R Deepa, Sara E Benjamin-Neelon, Sanjay Kinra, K Srinath Reddy

Giridhara R Babu, Yamuna Ana, R Deepa, Public Health Foundation of India, IIPH-H, Bangalore Campus, SIHFW Premises, Beside Leprosy Hospital, Bangalore 560023, India

GVS Murthy, Indian Institute of Public Health-Hyderabad, Plot # 1, A.N.V.Arcade, Amar Co-op Society, Kavuri Hills, Madhapur, Hyderabad 500033, India

GVS Murthy, London School of Hygiene and Tropical Medicine, London WC1E 7HT, United Kingdom

Prital Patel, Indian School of Business, Hyderabad 500111, India

Sara E Benjamin-Neelon, Johns Hopkins Bloomberg School of Public Health, Baltimore, MD 21205, United States

Sanjay Kinra, Department of Non-Communicable Disease Epidemiology, London School of Hygiene and Tropical Medicine and University College London Hospital, London WC1E 7HT, United Kingdom

K Srinath Reddy, Public Health Foundation of India, ISID Campus, 4 Institutional Area Vasant Kunj, New Delhi 110070, India

ORCID number: Giridhara R Babu (0000-0003-4370-8933); GVS Murthy (0000-0002-5695-866X); Yamuna Ana (0000-0002-6795-6846); Prital Patel (0000-0003-2922-8204); R Deepa (0000-0002-3781-496X); Sara E Benjamin Neelon (0000-0003-4643-2397); Sanjay Kinra (0000-0001-6690-4625); K Srinath Reddy (0000-0003-3416-3548).

Author contributions: Babu GR conceived the study aims and design, contributed to the data extraction, planned the analysis, interpreted the results and drafted the final version of the paper; Murthy GVS has contributed to manuscript development and critical review; Ana Y and Deepa R evaluated the study articles and made decisions on inclusion and exclusion of the articles; Patel P was involved in manuscript development, provided inputs for estimations and critical review; Neelon SEB has reviewed the manuscript critically; Kinra S has contributed to

the article critically for important intellectual content; Reddy KS has contributed to the article critically for important intellectual content and final approval of the version to be published.

Supported by Wellcome Trust DBT India Alliance Intermediate Fellowship (Clinical and Public Health) to Giridhara R Babu.

Conflict-of-interest statement: The authors deny any conflict of interest.

Data sharing statement: All data generated or analysed during this study are included in this published article. No additional data are available.

Open-Access: This article is an open-access article which was selected by an in-house editor and fully peer-reviewed by external reviewers. It is distributed in accordance with the Creative Commons Attribution Non Commercial (CC BY-NC 4.0) license, which permits others to distribute, remix, adapt, build upon this work non-commercially, and license their derivative works on different terms, provided the original work is properly cited and the use is non-commercial. See: <http://creativecommons.org/licenses/by-nc/4.0/>

Manuscript source: Unsolicited manuscript

Correspondence to: Giridhara R Babu, MBBS, MBA, MPH, PhD, Wellcome Trust-DBT India alliance Research Fellow in Public Health, Additional Professor, Public Health Foundation of India, IIPH-H, Bangalore Campus, SIHFW Premises, Beside Leprosy Hospital, 1st Cross, Magadi Road, Bangalore 560023, India. giridhar@iiphh.org
Telephone: +91-080-23206124

Received: August 3, 2017

Peer-review started: August 7, 2017

First decision: September 7, 2017

Revised: November 5, 2017

Accepted: November 19, 2017

Article in press: November 19, 2017

Published online: January 15, 2018

Abstract

AIM

To perform a meta-analysis of the association of obesity with hypertension and type 2 diabetes mellitus (T2DM) in India among adults.

METHODS

To conduct meta-analysis, we performed comprehensive, electronic literature search in the PubMed, CINAHL Plus, and Google Scholar. We restricted the analysis to studies with documentation of some measure of obesity namely; body mass index, waist-hip ratio, waist circumference and diagnosis of hypertension or diagnosis of T2DM. By obtaining summary estimates of all included studies, the meta-analysis was performed using both RevMan version 5 and "metan" command STATA version 11. Heterogeneity was measured by I^2 statistic. Funnel plot analysis has been done to assess the study publication bias.

RESULTS

Of the 956 studies screened, 18 met the eligibility criteria. The pooled odds ratio between obesity and hypertension was 3.82 (95%CI: 3.39 to 4.25). The heterogeneity around this estimate (I^2 statistic) was 0%, indicating low variability. The pooled odds ratio from the included studies showed a statistically significant association between obesity and T2DM (OR = 1.14, 95%CI: 1.04 to 1.24) with a high degree of variability.

CONCLUSION

Despite methodological differences, obesity showed significant, potentially plausible association with hypertension and T2DM in studies conducted in India. Being a modifiable risk factor, our study informs setting policy priority and intervention efforts to prevent debilitating complications.

Key words: Obesity; Meta-analysis; Hypertension; Type 2 diabetes mellitus

© The Author(s) 2018. Published by Baishideng Publishing Group Inc. All rights reserved.

Core tip: India with population explosion and high burden of non-communicable diseases (NCDs) poses a great challenge for the public health specialists to find the route cause for it. Meta-analysis to find the association of obesity with hypertension and type 2 diabetes mellitus in India proved the statistical significance association of obesity with major NCD's with high degree of variability. Results provided with the possible risk factors for the NCD's and what need to be done for the preventive aspect of such diseases. As obesity being a risk factor, setting up a priority policy decisions related to interventions for the prevention of obesity can result in a huge dynamic change in the trend of NCD's in the country like India.

Neelon SE, Kinra S, Reddy KS. Association of obesity with hypertension and type 2 diabetes mellitus in India: A meta-analysis of observational studies. *World J Diabetes* 2018; 9(1): 40-52 Available from: URL: <http://www.wjgnet.com/1948-9358/full/v9/i1/40.htm> DOI: <http://dx.doi.org/10.4239/wjd.v9.i1.40>

INTRODUCTION

Indians have a higher burden of obesity and have relatively lower muscle mass compared to the whites^[1]. Indians develop metabolic syndrome, hypertension, and type 2 diabetes mellitus (T2DM) earlier compared to whites, which is independent of BMI^[2,3]. The available evidence suggests the age-adjusted prevalence of obesity has doubled in men and has increased three folds in women over two decades (1970s-1990s) in India^[4]. Subsequent economic reforms in India (1991) have initiated overpowering changes in the quality and quantity in a number of lifestyle factors in Indians^[5]. For example, increased consumption of unhealthy food and lower levels of physical activity might likely have contributed to an increase in the prevalence of obesity and its comorbidities^[6].

In India, hypertension and T2DM are the major non-communicable diseases (NCDs) leading to catastrophic complications including death. It is important to investigate the role of modifiable risk factors resulting in NCDs such as obesity, physical inactivity, tobacco use, and alcohol consumption^[7]. Among these shared risk factors of NCDs, limiting the use of tobacco has fittingly received the greater attention of policy makers compared to other risk factors. However, the risk factors seldom act in isolation and it is important to alleviate the impact of their confluence. It is, therefore, important to determine the quantum of the risk contribution by individual risk factor like obesity. Available evidence suggests strong associations between obesity and NCDs^[8,9]. However, none of the earlier reviews have specifically evaluated the role of obesity in the etiology of hypertension and T2DM in India.

The prevalence of obesity has increased significantly in India over the last few decades. About a third of the adult population in urban India is currently estimated to be overweight or obese. As a result, the number of persons with hypertension and T2DM could increase exponentially^[10]. Apart from contributing to T2DM and hypertension, obesity is a major risk factor for pulmonary diseases, metabolic diseases, osteoarthritis, several cancers and serious psychiatric illness^[9,11]. We limit our investigation to T2DM and hypertension. Specifically, we plan to systematically review studies exploring the plausible role of obesity in the etiology of hypertension and T2DM, synthesize the evidence, and perform a meta-analysis if appropriate. Understanding the putative role of obesity and its impact on NCDs will inform future interventions to reduce the burden of

Babu GR, Murthy GVS, Ana Y, Patel P, Deepa R, Benjamin-

these diseases.

MATERIALS AND METHODS

The objective of our study is to estimate the association of obesity with hypertension and T2DM in Indian settings in adults. We developed a protocol for conducting the meta-analysis; with the searching strategy encompassing key MeSH terms, selection of article based on inclusion and exclusion criteria, data extraction, quality assessment of the study, the summary of evidence and analysis.

Literature search and article selection

We included only studies published in English and are conducted in India. We included both the original and review articles restricting the analysis to studies having: (1) documentation of some measure of obesity; AND (2) diagnosis of hypertension was reported; OR (3) T2DM was reported and diagnosed using World Health Organization (WHO) and American Diabetes Association (ADA) criteria. In addition, case-control studies must have compared participants with the disease (T2DM or hypertension) with controls without the disease. We excluded intervention studies, as this was beyond the scope of our review. We defined the exposure variable (obesity as adults with BMI ≥ 30 (studies have considered obesity as BMI with ≥ 25 and ≥ 30), waist circumference (WC) (≥ 80 cm for females and ≥ 90 cm for males), and waist to hip ratio (≥ 0.80 for females and ≥ 0.90 for males). We followed the Joint National Committee VII (JNC VII) criteria for the diagnosis of hypertension; with readings of Systolic Blood Pressure (SBP) ≥ 140 mmHg or Diastolic Blood Pressure (DBP) ≥ 90 mmHg. T2DM was diagnosed as per WHO and ADA classification, when Fasting Blood Sugar (FBS) is 126 mg/dL (≥ 7.0 mmol/L) or 2-h Post Prandial Blood Sugar (2 h-PPBS) is 200 mg/dL (≥ 11.1 mmol/L)^[12] (Table 1).

We conducted a comprehensive search of all papers published between January 1980 and January 2016 using MeSH terms for articles in PubMed (Table 2). We also screened other databases, including CINAHL Plus and Google Scholar for additional papers from January to October 2016. We contacted individual authors as necessary to clarify information and assess other relevant papers. We also reviewed cross-referenced papers cited in the assessed articles.

Data extraction and analysis

Stage 1: Identification of studies for inclusion: As a preliminary step two authors (Yamuna Ana and R Deepa) independently assessed the study abstracts retrieved from electronic databases.

Stage 2: Choice of valid studies: Studies selected in stage 1 with necessary information were independently assessed against the inclusion criteria. We included only those studies which aided in the calculation of the relative risk or odds ratio of exposure (obesity) and

outcome (T2DM or hypertension).

Stage 3: Quality assessment: The primary author (Giridhara R Babu) developed the protocol for the review and monitored the overall quality of the review at each step. Criteria for defining obesity, T2DM, and hypertension were noted and crosschecked by primary and secondary authors (Giridhara R Babu, GVS Murthy). Two authors (Yamuna Ana and R Deepa) independently reviewed each article in its entirety for inclusion. The primary author (Giridhara R Babu) conducted random checks before data were extracted and tabulated.

We employed the following set of criteria to evaluate the papers: (1) suitability of the study design; (2) appropriate sample size; (3) evidence regarding obesity and attributes of participants; and (4) accuracy of the tools used for quantifying obesity, diabetes and blood pressure. We also reviewed controlling for confounding, selection bias, reduction of reporting errors and strategies employed to minimize measurement bias.

For assessing eligibility, 2 authors (Yamuna Ana and R Deepa) individually reviewed the full-text papers. Discrepancies were resolved by agreement among both authors which arose during the selection of articles based on study inclusion criteria. Disagreements regarding the inclusion of article were resolved by consulting Giridhara R Babu. If there were multiple reports related to a single study, we included the report with the details relevant to obesity and the outcome of interest.

Stage 4: Extraction of the data and synthesis of results: We did a preliminary search of the electronic databases, after which we selected papers with a title and abstract that matched our criteria. We obtained additional articles from the references provided in the reviewed articles, downloaded the full texts of the article for review. We noted the following details; first author of the paper, year of publication, study design deployed, cut-off values for defining obesity, the prevalence of exposure (obesity), relative risk and odds ratio for T2DM and hypertension. Preferred Reporting Items for Systematic Reviews and Meta-Analysis (PRISMA) guidelines were used as the reference for assessing the quality of each study^[13].

We derived the summary estimate by combining estimates from all the selected studies^[14-24]. We did statistical analysis using RevMan version 5 and STATA version 11^[25]. We used double data entry procedure and analysed in the Cochrane Collaboration's Review Manager Software version 5 for Windows (Cochrane Collaboration, Oxford, England). Further, the data in the spreadsheet was analysed using the "metan" command of STATA 11 version for Mac (STATA Corporation, College Station, Texas, United States)^[25]. Crosschecking of outputs for internal consistency has been done and we obtained the pooled odds ratios reported in selected studies using Generic Inverse variance for overall estimates. We strictly conformed to the guidelines for meta-analysis of observational studies used in epidemiology^[26]. We used RevMan for developing flowcharts and for examining

Table 1 Criteria for obesity, hypertension, and type 2 diabetes mellitus

Criteria for obesity, hypertension and T2DM		
Obesity	Hypertension (JNC VII criteria)	T2DM
BMI (≥ 30)	SBP greater than or equal to 140 mmHg or	WHO and ADA classification: Fasting plasma glucose ≥ 7.0 mmol/L (126 mg/dL) or 2 h plasma glucose ≥ 11.1 mmol/L (200 mg/dL)
Waist-hip ratio (> 0.80 for females and > 0.90 for males)	DBP greater than or equal to 90 mmHg respectively	
Waist circumference (≥ 90 cm, > 88 cm for female and > 102 cm for male)		

DBP: Diastolic blood pressure; SBP: Systolic blood pressure; ADA: American Diabetes Association; JNC: Joint National Committee; WHO: World Health Organization; T2DM: Type 2 diabetes mellitus; BMI: Body mass index.

Table 2 Search terms used for literature review

Search terms for obesity and hypertension	Search Terms for Obesity and type 2 diabetes
((obesity[MeSH Terms]) AND hypertension[MeSH Terms]) AND prevalence[MeSH Terms] AND India [MeSH Terms]	((obesity[MeSH Terms]) AND type 2 diabetes[MeSH Terms]) AND incidence[MeSH Terms] AND India[MeSH Terms]
((obesity[MeSH Terms]) AND hypertension[MeSH Terms]) AND incidence[MeSH Terms] AND India[MeSH Terms]	((obesity[MeSH Terms]) AND type 2 diabetes[MeSH Terms]) AND prevalence[MeSH Terms] AND India[MeSH Terms]
((obesity[MeSH Terms]) AND hypertension[MeSH Terms]) AND relative risk[MeSH Terms] AND India[MeSH Terms]	((obesity[MeSH Terms]) AND type 2 diabetes [MeSH Terms]) AND risk ratio[MeSH Terms] AND India[MeSH Terms]
((obesity[MeSH Terms]) AND hypertension[MeSH Terms]) AND risk ratio[MeSH Terms] AND India[MeSH Terms]	((obesity[MeSH Terms]) AND type 2 diabetes[MeSH Terms]) AND relative risk[MeSH Terms] AND India [MeSH Terms]
((obesity[MeSH Terms]) AND hypertension[MeSH Terms]) AND attributable risk[MeSH Terms] AND India[MeSH Terms]	((obesity[MeSH Terms]) AND type 2 diabetes [MeSH Terms]) AND attributable risk[MeSH Terms] AND India[MeSH Terms]
((obesity[MeSH Terms]) AND hypertension[MeSH Terms]) AND prevalence[MeSH Terms] OR incidence[MeSH Terms] AND India [MeSH Terms]	((obesity[MeSH Terms]) AND type 2 diabetes [MeSH Terms]) AND prevalence[MeSH Terms] OR incidence[MeSH Terms] AND India [MeSH Terms]

the quality of study methodology. We calculated the unadjusted odds ratios with 95%CI using random-effects model for all analyses^[27]. We used funnel-plot analysis to assess small-study and publication bias. We calculated odds ratio for individual study from the data cell values. We calculated the pooled odds ratio using the individual unadjusted odds ratios of each study within each subgroup of case-control and cohort studies. Hence the pooled odds ratio was also unadjusted. We measured heterogeneity using I^2 statistic. This describes the percentage of total variation across studies that is due to heterogeneity rather than mere chance alone producing this^[28]. I^2 can be readily calculated from basic results obtained from a typical meta-analysis as $I^2 = 100\% \times (Q - df)/Q$, where Q is Cochran's heterogeneity statistic and df being the degrees of freedom. An advantage of I^2 is that it does not depend on the number of studies included in the meta-analysis^[29].

Risk of bias

To assess the risk of publication bias we constructed funnel plots for all the association between exposure and outcome variables.

RESULTS

Study selection

The initial search identified 6907 studies. After checking

for duplicates, we screened 956 studies and excluded 774 that were not relevant. Hence we included 182 studies for full article review and among those we excluded 164 studies from the meta-analysis. Of these, 131 articles were not eligible due to non-availability of exposure or outcome criteria (Figure 1). The ineligible studies were rejected for the following reasons: Exposure criteria were not defined (46), obesity or overweight was not used as an exposure (26), studies were conducted outside India (21), T2DM or hypertension was not included in study (23) and data provided was insufficient to calculate odds ratio or relative risk (15). Finally, 6 studies satisfying the review criteria for hypertension and 12 for T2DM were involved in the meta-analysis.

A descriptive overview of studies included in meta-analysis

One cohort study was included and rest were cross-sectional studies. The age groups of the participants ranged from 20 to 55.5 years. In studies with T2DM as the outcome, the exposure was assessed using BMI in 5 studies, WC in 3 studies and WHR in 4 studies. For the studies involving hypertension as an outcome of interest, five studies used BMI and one used WHR (Tables 3 and 4).

Methodological quality

Information regarding confounding factors is reported in all the studies and in 2 studies, the selection bias is

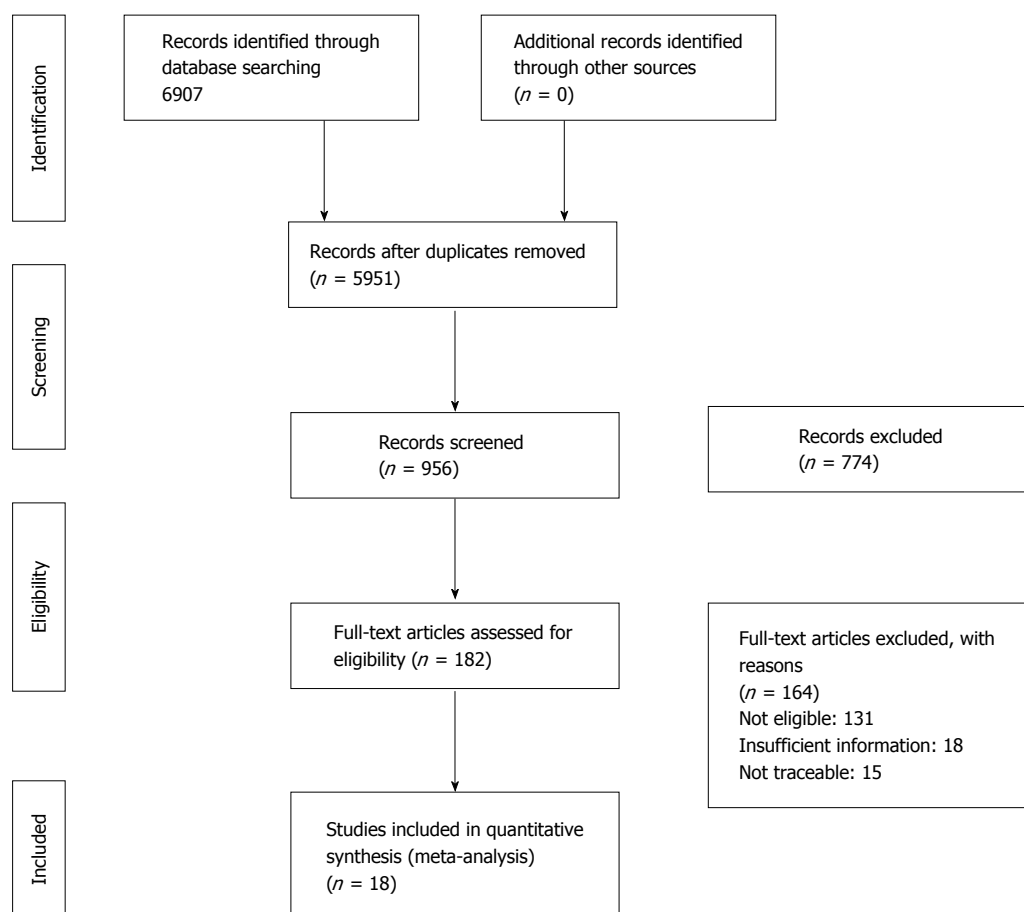


Figure 1 Preferred reporting items for systematic reviews and meta-analysis study flow diagram.

discussed. In studies with hypertension as an outcome, all studies discussed measurement error vs 6 studies with T2DM as the outcome (Tables 3 and 4).

Publication bias

The funnel plot that depicts the publication bias showed an inverted funnel shape with studies of higher precision relatively closer to the pooled odds ratio. This corroborates minimal publication bias (Figures 2 and 3).

Combined effect of obesity and type 2 diabetes mellitus

Odds ratio pooled from all the included studies in meta-analysis exhibited statistically significant association between obesity and T2DM (OR = 1.14, 95%CI: 1.043 to 1.237). We noticed substantial heterogeneity among these study estimates, with the I^2 statistic being 83.9% and $P = 0.0001$. Similarly, the pooled odds ratio of obesity and hypertension was 3.820 (95%CI: 3.392 to 4.248). The heterogeneity around this estimate (I^2 statistic) was 0%, and $P = 0.435$ indicating low variability among the included studies.

DISCUSSION

Our results show that the association between obesity and hypertension is strongly positive and T2DM is

moderately positive compared with healthy non-obese adults in India. Through the synthesis of available evidence using random effects meta-analysis, we show that obesity in India is a formidable independent risk factor to mitigate; albeit the risk appears to be relatively less for T2DM. With industrialization and urbanization, the prevalence of obesity has increased gradually in India, heightening the need to focus on the prevention of these NCDs.

Our analysis suggests that after adjustment for covariates, obesity is significantly associated with hypertension. These estimates were stable, suggested by low variability in the heterogeneity (I^2 statistic, 0%)^[30]. The findings concur with other studies linking body mass as an important risk factor to hypertension^[31-33]. This also coincides with the observed trend of increasing prevalence of hypertension in India across different risk groups for obesity^[34-37]. More specifically, the estimates of meta-analysis are analogous to the estimates from (odds ratio, 3.7; 95%CI: 2.1-6.8) synthesis of evidence covering 6 middle-income countries by Sanjay Basu *et al.*^[34], indicating increased correlation of obesity prevalence with hypertension across dissimilar cultures. The pathophysiology of developing hypertension in obese individuals is explained by elevated cardiac output, perhaps due to excess intravascular volume and reduced

Table 3 Characteristics of included obesity and hypertension studies

Ref.	Year	Participants characteristics	Study characteristics				Measurements		Methodological quality of study			
		Age M (sd) in yr	Setting	Study design	Sample size	Inclusion criteria	Exposure	Outcome	Adjusting confounders	Selection bias	Measurement error	Response rate
Reddy <i>et al</i> ^[14]	2003	20-30	Urban slums	Cross-sectional	1000 (500 male and 500 female)	Adults of 20-60 yr age	BMI > 25	Mean blood pressure levels	Important Confounders ¹	Not mentioned	Mentioned	100%
Mandal <i>et al</i> ^[15]	2008	40-49	Kolkata Municipal Corporation	Cross-sectional	887	Aged 20 yr or more	BMI ≥ 25	JNC VII guideline	Important confounders ¹ + religion, marital status, nature of work, family type, animal protein intake	Not mentioned	Mentioned and discussed	98.30%
Bhadoria <i>et al</i> ^[16]	2014	38-50	Urban wards	Cross-sectional	939	Individuals aged 20 yr and above	BMI ≥ 27.5	JNC VII guideline	Important confounders ¹	Not mentioned	Mentioned	97.02%
Bhadoria <i>et al</i> ^[16]	2014	Males: 25-52 Female: 24-53	48 villages and 15 urban wards of Jabalpur District	Cross-sectional	939	Aged 20 yr and above	W/H ratio > 0.85 for females and > 0.90 for males	JNC VII guideline	Important confounders ¹	Not mentioned	Mentioned	97.02%
Bhadoria <i>et al</i> ^[16]	2014	Males: 25-52 Female: 24-53	Villages of Jabalpur district	Cross-sectional	939	Aged 20 yr and above	BMI ≥ 27.5	JNC VII guideline	Important confounders ¹	Not mentioned	Mentioned	97.02%
Adhikari <i>et al</i> ^[17]	2015	53.9 ± 12.7	Semi-urban in Mangalore city	cross-sectional	800	≥ 20 yr	BMI ≥ 25	JNC VII criteria	Important confounders ¹ + serum cholesterol, serum triglycerides	Mentioned and discussed	Mentioned and discussed	68.80%

¹Important confounder: Age, sex, family history, history of previous events, DM, diet, smoking, alcohol, no regular exercise, saturated fat intake, excess salt intake, sedentary physical activity. JNC VII criteria for diagnosis: Considering JNC 7 category guideline, normal blood pressure is defined as < 120/80 mmHg, prehypertension state is detected when systolic blood pressure (SBP) and diastolic blood pressure (DBP) is 120-139 mmHg and 80-89 mmHg respectively. If the blood pressure is > 140/90 mmHg it is diagnosed as hypertension with Stage 1 hypertension (when SBP and DBP are 140-159 mmHg and 90-99 mmHg respectively) and Stage 2 hypertension (when SBP and DBP are ≥ 160 mmHg and ≥ 100 mmHg respectively). BMI: Body mass index; JNC: Joint National Committee.

cardiac contractility^[38]. Recent evidence suggests that among obese, alteration in nutritional status, gut microbiota, sunlight exposure and increased physical activity have an important role in the presence or absence of hypertension^[39]. Future studies may provide more details on these variables, including possible mediation.

Our results indicate that obesity is only moderately associated with T2DM. Also, we observed considerable heterogeneity in studies involving T2DM. The results also indicate that this is not explained by differences in participant age, baseline characteristics, or study quality. Such heterogeneity might be seen for several reasons. First, the "Asian Indian Phenotype" refers to unique abnormalities characterized by higher chances of adverse effects of obesity despite lower BMI, higher WHR, comparatively low WC and thin stature as compared to other ethnic groups^[40]. The lean T2DM

is a distinct clinical entity in India. Due to temporal ambiguity in cross-sectional studies, it is possible that loss of weight might have ensued after the diagnosis of T2DM. In a recent survey covering eleven cities of India, 45% patients with diabetic retinopathy reported already had the visual loss when they first detected to have T2DM^[41]. This indicates that nearly half of the persons with T2DM in India are undiagnosed, and therefore, apart from other complications would have lost considerable weight by the time of diagnosis. It is reported that nearly 53% of patients may have weight loss as the presenting symptom of T2DM^[42]. Given this evidence, we estimate that nearly one-fourth of the undiagnosed persons with T2DM will have weight loss and therefore will spuriously indicate that obesity may not be a significant risk factor. Using cut-off points of BMI, WC and WHR as surrogates for percentage body fat in Indians, and thereby making classifications

Table 4 Characteristics of included obesity and type 2 diabetes mellitus studies

Ref.	Year	Participants characteristics			Study characteristics		Measurements		Methodological quality of study			
		Age M (sd) in yr	Setting	Study design	Sample size	Inclusion criteria	Exposure	Outcome	Adjusting confounders	Selection bias	Measurement error	Response rate
Mohan <i>et al</i> ^[19]	1996	55.5 ± 11.9	Tamilnadu	Cross-sectional	1399	Individuals aged ≥ 20 yr	BMI ≥ 30 kg/m ²	Diabetes (WHO criteria)	Important confounders ¹ +, SBP, DBP	Not mentioned	Mentioned and discussed	90.20%
Mohan <i>et al</i> ^[19]	1996	55.5 ± 11.9	Tamilnadu	Cross-sectional	1399	individuals aged ≥ 20 yr	WC ≥ 90 cm	Diabetes (WHO criteria)	Important confounders ¹ +, SBP, DBP	Not mentioned	Mentioned and discussed	90.20%
Kumar <i>et al</i> ^[20]	Published year 2008	36.4	Kolkata	Cross-sectional	2200	Policemen with (monthly income: Rs.6000-15000), age (20 and 60 yr)	BMI	T2DM	Important confounders ¹ +, SBP, DBP,	Not mentioned	Mentioned and discussed	98.18%
Kumar <i>et al</i> ^[20]	Published year 2008	36.4	Kolkata	Cross-sectional	2200	policemen with (monthly income: Rs.6000-15000), age (20 and 60 yr)	WHR	T2DM	Important confounders ¹ + SBP, DBP	Not mentioned	Mentioned and discussed	98.18%
Kumar <i>et al</i> ^[20]	Published year 2008	36.4	Kolkata	Cross-sectional	2200	Policemen with (monthly income: Rs.6000-15000), age: 20 and 60 yr	WC	T2DM	Important confounders ¹ SBP, DBP	Not mentioned	Mentioned and discussed	98.18%
Bharati <i>et al</i> ^[21]	2007	20-49	Rural and urban field practice area.	Cross-sectional	1370	Adults: ≥ 20 yr	BMI > 30	T2DM (ADA classification)	Important confounders ¹ + blood cholesterol, hypertension	Not mentioned	Not mentioned	100%
Bharati <i>et al</i> ^[21]	2007	20-49	Rural and urban field practice area	Cross-sectional	1370	Adults: ≥ 20 yr	WHR	T2DM (ADA classification)	Important confounders ¹ + blood cholesterol, hypertension	Not mentioned	Not mentioned	100%
Ravindra Singh <i>et al</i> ^[24]	2012-13	30-39	Agra City	Cross-sectional	633	Adults: ≥ 30 yr residing in Agra City	BMI	T2DM (WHO criteria)	Important confounders ¹	Not mentioned	Not mentioned	100%
Ravindra Singh <i>et al</i> ^[24]	2012-13	30-39	Agra City	Cross-sectional	633	Adults: ≥ 30 yr residing in Agra City	WHR	T2DM (WHO criteria)	Important confounders ¹	Not mentioned	Not mentioned	100%
Ravindra Singh <i>et al</i> ^[24]	2012-13	30-39	Agra City	Cross-sectional	633	Adults: ≥ 30 yr residing in Agra City	WC (> 88 cm for female and > 102 cm for male)	T2DM (WHO criteria)	Important confounders ¹	Not mentioned	Not mentioned	100%
Ghorpade <i>et al</i> ^[22]	2007	35-50	Rural Tamilnadu	Cohort	1403	Adults > 25 yr of age from selected population	BMI ≥ 23	T2DM	Important confounders ¹ + n work status, Alcohol intake	Mentioned	Mentioned and discussed	85%
Vijaya-kumar <i>et al</i> ^[23]	2007	30-44	Urban Kerala	Cross-sectional	1990	≥ 18 yr, residing since t 6 mo	WHR (< 0.80 in women, 0.90 in men)	T2DM (Those with diabetes, and ADA classification)	Important confounders ¹ + hypercholesterolemia, elevated BP	Not mentioned	Not mentioned	82.70%

¹Important confounders: Age, family history, sex, dietary habit, social economic status. As per WHO and ADA classification, diagnosis of diabetes is confirmed when fasting plasma glucose is ≥ 7 mmol/L (126 mg/dL) or 2 h plasma glucose is ≥ 11.1 mmol/L (200 mg/dL). Impaired glucose tolerance (IGT) test and impaired fasting glucose (IFG) test is considered as positive when the fasting plasma glucose is < 7 mmol/L (126 mg/dL) and 6.1 to 6.9 mmol/L (110 mg/dL to 125 mg/dL) respectively, 2 h plasma glucose is ≥ 7.8 and < 11.1 mmol/L (140 mg/dL and 200 mg/dL) and < 7.8 mmol/L (140 mg/dL) respectively. Both: Males and females; NA: Not available; ADA classification of diabetes: Fasting: ≥ 126 mg/dL; DBP: Diastolic blood pressure; SBP: Systolic blood pressure; ADA: American Diabetes Association; JNC: Joint National Committee; WHO: World Health Organization; T2DM: Type 2 diabetes mellitus; WC: Waist circumference; WHR: Waist to hip ratio; BMI: Body mass index.

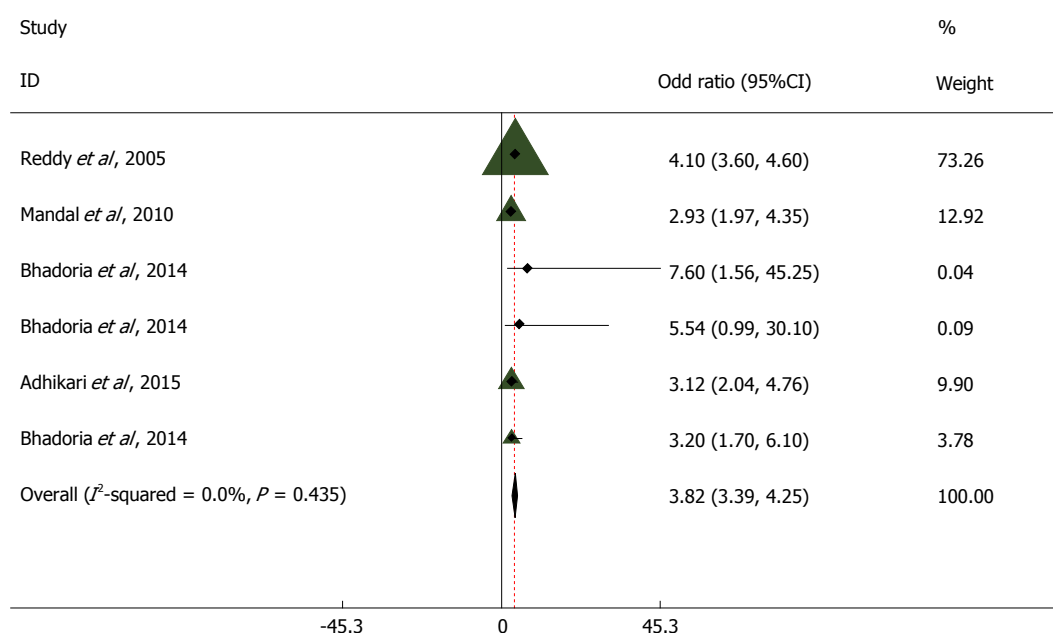


Figure 2 Meta-analysis of studies exploring association between obesity and hypertension in India.

of obesity might have underestimated the overall measures^[43]. The validity of universal cut-off points for Indians is uncertain; it would be better only to treat it continuous variable^[8]. Future examinations should include analysis of the data sets from these studies for a continuous association. The association of obesity with T2DM and hypertension is highly probable at lower levels than the cut-off points used in this paper. Therefore, we might have grossly underestimated the association between obesity and T2DM. Further, Survival bias might have resulted in underestimation; since, people with T2DM, who are dead, debilitated, disabled or have severe illness might not have captured by the cross-sectional studies^[44]. The available evidence concurs with our finding; while the majority of persons with T2DM are obese in the west, 27% of people with diabetes in India are lean^[45-47]. These individuals may have different clinical and biochemical profiles, including predisposition to microvascular complications^[46-49].

Such variations in phenotype used in different studies might include inconsistencies in specific cut-points employed. It is also possible that most of the evidence from cross-sectional studies is derived from hospital-based populations and is, therefore, subject to considerable survivor bias^[50]. Hence, the included participants in the final sample represent only survivors who might have had better glucose control compared to individuals with poor glucose control confounded by obesity^[50]. Finally, those with T2DM may lose substantial amounts of weight from the disease and as a function of treatment^[51]. Due to the cross-sectional nature of these studies, the temporality of obesity prior to the onset of T2DM cannot be established. Despite the heterogeneity, most estimates are in the same direction with only 2 studies reporting less than a null association for T2DM.

The association of obesity with NCDs in India has several challenges. First, despite posing a major public health challenge, the rising prevalence of childhood obesity has received very little attention from policy makers in India. Second, compared to whites, Indians are more prone for obesity and decreased muscle mass for any proposed value of BMI^[1]. With 46%^[52] in the south and 50%^[53] in the north, recent estimates suggest that obesity affects the unvaryingly high proportion of urban Indians, predisposing them to future NCDs. This complicates the issue since Indians within normal BMI can develop insulin resistance, metabolic syndrome, and T2DM^[1]. Therefore, the severity and consequences of obesity might be grossly underestimated, including the challenge of finding an appropriate definition of obesity in Indians. The implications of obesity on the growth of the nation and future expenditures are undervalued. Given that India is projected to have 135 million individuals with generalized obesity^[54], around 44 million might develop insulin resistance^[55-57]. If we were to apply similar methodology employed by Popkin *et al.*^[57] in previous estimates, the annual costs attributable to overweight and obesity in India will surpass approximately \$100 billion in 2025.

To our estimate, this is the first meta-analysis to summarize association of obesity with hypertension and T2DM in India. Our results indicate that it is important to consider further explorations of obesity and NCD associations. Intervention and policy efforts to alleviate the adverse effects of obesity in India, including hypertension and T2DM are also needed. However, there are number of limitations to our review. First, the possibility of conclusive evidence is limited due to the availability of evidence from cohort studies. Second, there can be considerable measurement issues due to heterogeneous definitions

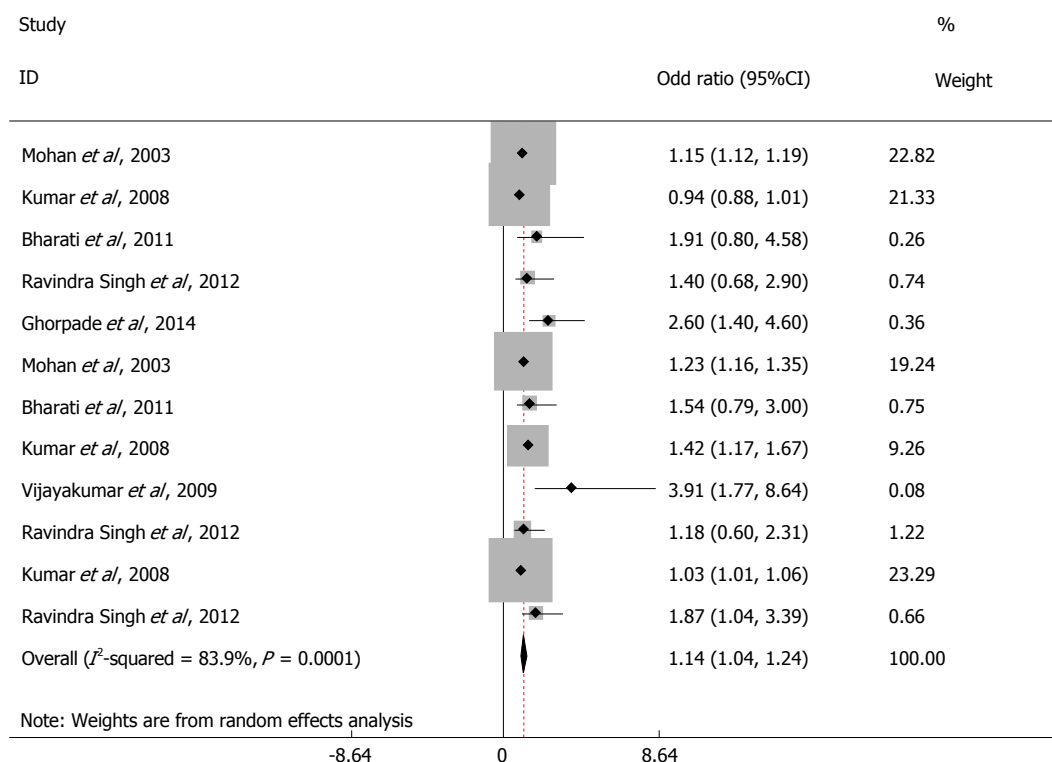


Figure 3 Meta-analysis of studies exploring association between obesity and type 2 diabetes mellitus in India.

in different population subgroups. Third, a standard definition of what constitutes "obesity" in Indians remains elusive and therefore, combining different measures of obesity might have led to misclassifications in this study. Also, in the absence of India specific cut-off points, inability to treat obesity as a continuous variable might have underestimated the association between obesity and T2DM. Finally, the reliance on cross-sectional studies may be particularly susceptible to biases, including survivor bias and therefore restricts causal inference.

Obesity is an important driver of NCDs in India. The current stage of the obesity epidemic presents an opportunity for policy and intervention efforts related to prevention. This opportunity necessitates developing a clear strategy for the control of NCDs through rigorous screening and management. The adverse effects of obesity cannot be assessed without robust documentation of obesity indicators throughout the life course. The increasing prevalence of obesity, hypertension, and diabetes in India has enormous implications for the healthcare system. Policymakers, Government officials, and public health professionals can focus policy and intervention efforts on obesity as an important risk factor to prevent NCDs like diabetes and hypertension.

ARTICLE HIGHLIGHTS

Research background

It is well known that hypertension and type 2 diabetes mellitus (T2DM) are the major non-communicable diseases (NCDs) leading to catastrophic complications and death in India. It is important to investigate the role of modifiable risk factors such as obesity resulting in NCDs. The authors are

aware that the risk factors seldom act in isolation and it is important to alleviate the impact of their confluence. It is therefore important to determine the significance of risk contribution by individual risk factor like obesity. Available evidence suggests strong associations between obesity and NCDs. However, none of the earlier reviews have specifically evaluated the role of obesity in the etiology of hypertension and T2DM in India.

Research motivation

As obesity is one of the key NCD's and risk factor for the majority of other NCD's in India, the authors need to provide evidence to show its association with other major diseases like hypertension and T2DM. By exhibiting the evidence and its association, preventive measures can be taken for root cause of disease.

Research objectives

To perform a meta-analysis of the association of obesity with hypertension and T2DM in India among adults to assess potential causal factors and improve prevention and control measures for these NCDs.

Research methods

The authors have followed rigorous methodology in doing comprehensive meta-analysis with a predefined protocol. The authors entered and analysed data using the Cochrane Collaboration's Review Manager software version 5 for Windows (Cochrane Collaboration, Oxford, England), and subsequently entered into a spreadsheet and re-analysed data using the "metan" command of STATA 11 version for Mac. The authors have used the RevMan for developing flow chart according to PRISMA guidelines, and also assessed the methodological quality of studies. The authors found that the pooled estimate between obesity and hypertension and the heterogeneity around this estimate which indicating low variability among the included studies. The pooled estimate from all studies showed a statistically significant association between obesity and T2DM. The authors observed considerable heterogeneity among these estimates of studies.

Research results

The results shows that the association of obesity and hypertension is strongly positive and T2DM moderately positive compared with healthy non-obese

adults in India. This study provides evidence regarding the putative role of obesity and its impact on NCDs. This also coincides with the observed trend of increasing prevalence of hypertension in India across different risk groups for obesity.

Research conclusions

The current stage of the obesity epidemic presents an opportunity for policy and intervention efforts related to prevention. This opportunity necessitates developing a clear strategy for the control of NCDs through rigorous program management at national and state levels. The increasing prevalence of obesity, hypertension, and diabetes in India has enormous implications for the healthcare system. Policy makers, government officials, and public health professionals can focus policy and intervention efforts on obesity as an important risk factor to prevent NCDs like diabetes and hypertension.

Research perspectives

Study provides with experience of route cause associated with major NCD's like hypertension and T2DM. As the evidence suggested obesity is associated with these NCD's, it is the time to think regarding preventive aspect of obesity to prevent future outcome. With limited earlier statistically proved evidence, the current meta-analysis the association of obesity with hypertension and T2DM in India proved the statistical significance association of obesity with major NCD's such as T2DM and hypertension with high degree of variability and substantial heterogeneity. Results provided the possible common risk factors for the NCD's and made a way for the researchers to think of the research on interventional measures to prevent obesity in coming future. Research involving Randomized Controlled Trials nested within cohort for the prevention of obesity will provide affirmation of fruitful interventions which can be included in future evidence based policy formulation.

ACKNOWLEDGMENTS

We thank Dr. Jotheeswaran A Thiyagarajan for his guidance in performing the statistical analysis..

REFERENCES

- 1 **Bhardwaj S**, Misra A, Khurana L, Gulati S, Shah P, Vikram NK. Childhood obesity in Asian Indians: a burgeoning cause of insulin resistance, diabetes and sub-clinical inflammation. *Asia Pac J Clin Nutr* 2008; **17** Suppl 1: 172-175 [PMID: 18296330]
- 2 **Enas EA**, Mohan V, Deepa M, Farooq S, Pazhoor S, Chennikkara H. The metabolic syndrome and dyslipidemia among Asian Indians: a population with high rates of diabetes and premature coronary artery disease. *J Cardiometaab Syndr* 2007; **2**: 267-275 [PMID: 18059210 DOI: 10.1111/j.1559-4564.2007.07392.x]
- 3 **Yajnik CS**, Ganpule-Rao AV. The obesity-diabetes association: what is different in indians? *Int J Low Extrem Wounds* 2010; **9**: 113-115 [PMID: 20705620 DOI: 10.1177/1534734610380028]
- 4 **Gupta R**, Gupta VP, Bhagat N, Rastogi P, Sarna M, Prakash H, Deedwania PC. Obesity is major determinant of coronary risk factors in India: Jaipur Heart Watch studies. *Indian Heart J* 2008; **60**: 26-33 [PMID: 19212018]
- 5 **Murty S**. Multinational Corporations: One Dimension of Economic Reforms. In Singh BN, Shrivastava MP, Prasad N, editors. *Economic Reforms in India*, New Delhi: APH Publishing Corporation, 2003: 261-280
- 6 **Hu FB**. Globalization of diabetes: the role of diet, lifestyle, and genes. *Diabetes Care* 2011; **34**: 1249-1257 [PMID: 21617109 DOI: 10.2337/dc11-0442]
- 7 **GBD 2013 Risk Factors Collaborators**. Forouzanfar MH, Alexander L, Anderson HR, Bachman VF, Biryukov S, Brauer M, Burnett R, Casey D, Coates MM, Cohen A, Delwiche K, Estep K, Frostad JJ, Astha KC, Kyu HH, Moradi-Lakeh M, Ng M, Slepak EL, Thomas BA, Wagner J, Aasvang GM, Abbafati C, Abbasoglu Ozgoren A, Abd-Allah F, Abera SF, Aboyans V, Abraham B, Abraham JP, Abubakar I, Abu-Rmeileh NM, Aburto TC, Achoki T, Adelekan A, Adofo K, Adou AK, Adsuar JC, Afshin A, Agardh EE,

Al Khabouri MJ, Al Lami FH, Alam SS, Alasfoor D, Albittar MI, Alegretti MA, Aleman AV, Alemu ZA, Alfonso-Cristancho R, Alhabib S, Ali R, Ali MK, Alla F, Allebeck P, Allen PJ, Alsharif U, Alvarez E, Alvis-Guzman N, Amankwaa AA, Amare AT, Ameh EA, Ameli O, Amini H, Ammar W, Anderson BO, Antonio CA, Anwari P, Argeanu Cunningham S, Arnlöv J, Arsenijevic VS, Artaman A, Asghar RJ, Assadi R, Atkins LS, Atkinson C, Avila MA, Awuah B, Badawi A, Bahit MC, Bakfalouni T, Balakrishnan K, Balalla S, Balu RK, Banerjee A, Barber RM, Barker-Collo SL, Barquera S, Barregard L, Barrero LH, Barrientos-Gutierrez T, Basto-Abreu AC, Basu A, Basu S, Basulaiman MO, Batis Ruvalcaba C, Beardsley J, Bedi N, Bekele T, Bell ML, Benjet C, Bennett DA, Benzian H, Bernabé E, Beyene TJ, Bhalla N, Bhalla A, Bhutta ZA, Bikbov B, Bin Abdulhak AA, Blore JD, Blyth FM, Bohensky MA, Bora Başara B, Borges G, Bornstein NM, Bose D, Boufous S, Bourne RR, Brainin M, Brazinova A, Breitborde NJ, Brenner H, Briggs AD, Broday DM, Brooks PM, Bruce NG, Brugha TS, Brunekreef B, Buchbinder R, Bui LN, Bukhman G, Bulloch AG, Burch M, Burney PG, Campos-Nonato IR, Campuzano JC, Cantoral AJ, Caravanos J, Cárdenas R, Cardis E, Carpenter DO, Caso V, Castañeda-Orjuela CA, Castro RE, Catalá-López F, Cavalleri F, Çavlin A, Chadha VK, Chang JC, Charlson FJ, Chen H, Chen W, Chen Z, Chiang PP, Chimed-Ochir O, Chowdhury R, Christophi CA, Chuang TW, Chugh SS, Cirillo M, Claßen TK, Colistro V, Colomar M, Colquhoun SM, Contreras AG, Cooper C, Cooperrider K, Cooper LT, Coresh J, Courville KJ, Criqui MH, Cuevas-Nasu L, Damsere-Derry J, Danawi H, Dandona L, Dandona R, Dargan PI, Davis A, Davitoiu DV, Dayama A, de Castro EF, De la Cruz-Góngora V, De Leo D, de Lima G, Degenhardt L, del Pozo-Cruz B, Dellavalle RP, Deribe K, Derrett S, Des Jarlais DC, Dessalegn M, deVeber GA, Devries KM, Dharmaratne SD, Dherani MK, Dicker D, Ding EL, Dokova K, Dorsey ER, Driscoll TR, Duan L, Durrani AM, Ebel BE, Ellenbogen RG, Elshrek YM, Endres M, Ermakov SP, Erskine HE, Eshraty B, Esteghamati A, Fahimi S, Faraon EJ, Farzadfar F, Fay DF, Feigin VL, Feigl AB, Fereshtehnejad SM, Ferrari AJ, Ferri CP, Flaxman AD, Fleming TD, Foigt N, Foreman KJ, Paleo UF, Franklin RC, Gabbe B, Gaffikin L, Gakidou E, Gamkrelidze A, Gankpé FG, Gansevoort RT, García-Guerra FA, Gasana E, Geleijnse JM, Gessner BD, Gething P, Gibney KB, Gillum RF, Ginawi IA, Giroud M, Giussani G, Goenka S, Goginashvili K, Gomez Dantes H, Gona P, Gonzalez de Cosio T, González-Castell D, Gotay CC, Goto A, Gouda HN, Guerrant RL, Gugrani HC, Guillemin F, Gunnell D, Gupta R, Gupta R, Gutiérrez RA, Hafezi-Nejad N, Hagan H, Hagstromer M, Halasa YA, Hamadeh RR, Hammami M, Hankey GJ, Hao Y, Harb HL, Haregu TN, Haro JM, Havmoeller R, Hay SI, Hedayati MT, Heredia-Pi IB, Hernandez L, Heuton KR, Heydarpour P, Hijar M, Hoek HW, Hoffman HJ, Hornberger JC, Hosgood HD, Hoy DG, Hsairst M, Hu G, Hu H, Huang C, Huang JJ, Hubbell BJ, Huiart L, Hussein A, Iannarone ML, Iburg KM, Idrisov BT, Ikeda N, Innos K, Inoue M, Islami F, Ismayilova S, Jacobsen KH, Jansen HA, Jarvis DL, Jassal SK, Jauregui A, Jayaraman S, Jeemon P, Jensen PN, Jha V, Jiang F, Jiang G, Jiang Y, Jonas JB, Juel K, Kan H, Kany Roseline SS, Karam NE, Karch A, Karema CK, Karthikeyan G, Kaul A, Kawakami N, Kazi DS, Kemp AH, Kengne AP, Keren A, Khader YS, Khalifa SE, Khan EA, Khang YH, Khatibzadeh S, Khonelidze I, Kieling C, Kim D, Kim S, Kim Y, Kimokoti RW, Kinfu Y, Kinge JM, Kissela BM, Kivipelto M, Knibbs LD, Knudsen AK, Kokubo Y, Kose MR, Kosen S, Kraemer A, Kravchenko M, Krishnaswami S, Kromhout H, Ku T, Kuate Defo B, Kucuk Bicer B, Kuipers EJ, Kulkarni C, Kulkarni VS, Kumar GA, Kwan GF, Lai T, Lakshmana Balaji A, Lalloo R, Lallukka T, Lam H, Lan Q, Lansingh VC, Larson HJ, Larsson M, Laryea DO, Lavados PM, Lawrynowicz AE, Leasher JL, Lee JT, Leigh J, Leung R, Levi M, Li Y, Li Y, Liang J, Liang X, Lim SS, Lindsay MP, Lipshultz SE, Liu S, Liu Y, Lloyd BK, Logroscino G, London SJ, Lopez N, Lortet-Tieulent J, Lotufo PA, Lozano R, Lunevicius R, Ma J, Ma S, Machado VM, MacIntyre MF, Magis-Rodriguez C, Mahdi AA, Majdan M, Malekzadeh R, Mangalam S, Mapoma CC, Marape M, Marcenes W, Margolis DJ, Margono C, Marks GB, Martin RV, Marzan MB,

- Mashal MT, Masiye F, Mason-Jones AJ, Matsushita K, Matzopoulos R, Mayosi BM, Mazorodze TT, McKay AC, McKee M, McLain A, Meaney PA, Medina C, Mehndiratta MM, Mejia-Rodriguez F, Mekonnen W, Melaku YA, Meltzer M, Memish ZA, Mendoza W, Mensah GA, Meretoja A, Mhimbira FA, Micha R, Miller TR, Mills EJ, Misganaw A, Mishra S, Mohamed Ibrahim N, Mohammad KA, Mokdad AH, Mola GL, Monasta L, Montañez Hernandez JC, Montico M, Moore AR, Morawska L, Mori R, Moschandreas J, Moturi WN, Mozaffarian D, Mueller UO, Mukaigawara M, Mullany EC, Murthy KS, Naghavi M, Nahas Z, Naheed A, Naidoo KS, Naldi L, Nand D, Nangia V, Narayan KM, Nash D, Neal B, Nejari C, Neupane SP, Newton CR, Ngalesoni FN, Ngirabega Jde D, Nguyen G, Nguyen NT, Nieuwenhuijsen MJ, Nisar MI, Nogueira JR, Nolla JM, Nolte S, Norheim OF, Norman RE, Norrving B, Nyakarahuka L, Oh IH, Ohkubo T, Olusanya BO, Omer SB, Opio JN, Orozco R, Pagcatipun RS Jr, Pain AW, Pandian JD, Panelo CI, Papachristou C, Park EK, Parry CD, Paternina Caicedo AJ, Patten SB, Paul VK, Pavlin BI, Pearce N, Pedraza LS, Pedroza A, Pejin Stokic L, Pekerici A, Pereira DM, Perez-Padilla R, Perez-Ruiz F, Perico N, Perry SA, Pervaiz A, Pesudovs K, Peterson CB, Petzold M, Phillips MR, Phua HP, Plass D, Poenaru D, Polanczyk GV, Polinder S, Pond CD, Pope CA, Pope D, Popova S, Pourmalek F, Powles J, Prabhakaran D, Prasad NM, Qato DM, Quezada AD, Quistberg DA, Racapé L, Rafay A, Rahimi K, Rahimi-Movaghar V, Rahman SU, Raju M, Rakovac I, Rana SM, Rao M, Razavi H, Reddy KS, Refaat AH, Rehm J, Remuzzi G, Ribeiro AL, Riccio PM, Richardson L, Riederer A, Robinson M, Roca A, Rodriguez A, Rojas-Rueda D, Romieu I, Ronfani L, Room R, Roy N, Ruhago GM, Rushton L, Sabin N, Sacco RL, Saha S, Sahathevan R, Sahraian MA, Salomon JA, Salvo D, Sampson UK, Sanabria JR, Sanchez LM, Sánchez-Pimienta TG, Sanchez-Riera L, Sandar L, Santos IS, Sapkota A, Satpathy M, Saunders JE, Sawhney M, Saylan MI, Scarborough P, Schmidt JC, Schneider JJ, Schöttker B, Schwebel DC, Scott JG, Seedat S, Sepanlou SG, Serdar B, Servan-Mori EE, Shaddick G, Shahraz S, Levy TS, Shangquan S, She J, Sheikhbahaei S, Shibuya K, Shin HH, Shinohara Y, Shiri R, Shishani K, Shieue I, Sigfusdottir ID, Silberberg DH, Simard EP, Sindi S, Singh A, Singh GM, Singh JA, Skirbekk V, Sliwa K, Soljak M, Soneji S, Søreide K, Soshnikov S, Sposato LA, Sreeramareddy CT, Stapelberg NJ, Stathopoulou V, Steckling N, Stein DJ, Stein MB, Stephens N, Stöckl H, Straif K, Stroumpoulis K, Sturua L, Sunguya BF, Swaminathan S, Swaroop M, Sykes BL, Tabb KM, Takahashi K, Talongwa RT, Tandon N, Tanne D, Tanner M, Tavakkoli M, Te Ao BJ, Teixeira CM, Téllez Rojo MM, Terkawi AS, Texcalac-Sangrador JL, Thackway SV, Thomson B, Thorne-Lyman AL, Thrift AG, Thurston GD, Tillmann T, Tobollik M, Tonelli M, Topouzis F, Towbin JA, Toyoshima H, Traebert J, Tran BX, Trasande L, Trillini M, Trujillo U, Dimbuene ZT, Tsilimbaris M, Tuzcu EM, Uchendu US, Ukwaja KN, Uzum SB, van de Vijver S, Van Dingenen R, van Gool CH, van Os J, Varakin YY, Vasankari TJ, Vasconcelos AM, Vavilala MS, Veerman LJ, Velasquez-Melendez G, Venketasubramanian N, Vijayakumar L, Villalpando S, Violante FS, Vlassov VV, Vollset SE, Wagner GR, Waller SG, Wallin MT, Wan X, Wang H, Wang J, Wang L, Wang W, Wang Y, Warouw TS, Watts CH, Weichenthal S, Weiderpass E, Weintraub RG, Werdecker A, Wessells KR, Westerman R, Whiteford HA, Wilkinson JD, Williams HC, Williams TN, Woldeyohannes SM, Wolfe CD, Wong JQ, Woolf AD, Wright JL, Wurtz B, Xu G, Yan LL, Yang G, Yano Y, Ye P, Yeneseu M, Yentür GK, Yip P, Yonemoto N, Yoon SJ, Younis MZ, Younoussi Z, Yu C, Zaki ME, Zhao Y, Zheng Y, Zhou M, Zhu J, Zhu S, Zou X, Zunt JR, Lopez AD, Vos T, Murray CJ. Global, regional, and national comparative risk assessment of 79 behavioural, environmental and occupational, and metabolic risks or clusters of risks in 188 countries, 1990-2013: a systematic analysis for the Global Burden of Disease Study 2013. *Lancet* 2015; **386**: 2287-2323 [PMID: 26364544 DOI: 10.1016/S0140-6736(15)00128-2]
- 8 **Deurenberg P**, Yap M, van Staveren WA. Body mass index and percent body fat: a meta analysis among different ethnic groups. *Int J Obes Relat Metab Disord* 1998; **22**: 1164-1171 [PMID: 9877251 DOI: 10.1038/sj.ijo.0800741]
- 9 **de Onis M**, Blössner M, Borghi E. Global prevalence and trends of overweight and obesity among preschool children. *Am J Clin Nutr* 2010; **92**: 1257-1264 [PMID: 20861173 DOI: 10.3945/ajcn.2010.29786]
- 10 **Zimmet P**. Globalization, coca-colonization and the chronic disease epidemic: can the Doomsday scenario be averted? *J Intern Med* 2000; **247**: 301-310 [PMID: 10762445 DOI: 10.1046/j.1365-2796.2000.00625.x]
- 11 **Samanic C**, Chow WH, Gridley G, Jarvholm B, Fraumeni JF Jr. Relation of body mass index to cancer risk in 362,552 Swedish men. *Cancer Causes Control* 2006; **17**: 901-909 [PMID: 16841257 DOI: 10.1007/s10552-006-0023-9]
- 12 **American Diabetes Association**. Diagnosis and classification of diabetes mellitus. *Diabetes Care* 2010; **33** Suppl 1: S62-S69 [PMID: 20042775 DOI: 10.2337/dc10-S062]
- 13 **Moher D**, Liberati A, Tetzlaff J, Altman DG; PRISMA Group. Preferred reporting items for systematic reviews and meta-analyses: the PRISMA statement. *Ann Intern Med* 2009; **151**: 264-269, W64 [PMID: 19622511 DOI: 10.7326/0003-4819-151-4-200908180-00135]
- 14 **Reddy S**, Prabhu G. Prevalence and risk factors of hypertension in adults in an Urban Slum, Tirupati, AP. *IJCM* 2005; **30**: 84 [DOI: 10.4103/0970-0218.42855]
- 15 **Mandal PK**, Roy AS, Chatterjee C, Mallik S, Manna N. Burden of hypertension and its risk factors in an urban community of India: are we aware and concerned? *SJPH* 2010; **5**: 130-135
- 16 **Bhadoria AS**, Kasar PK, Toppo NA, Bhadoria P, Pradhan S, Kabirpanthi V. Prevalence of hypertension and associated cardiovascular risk factors in Central India. *J Family Community Med* 2014; **21**: 29-38 [PMID: 24695988 DOI: 10.4103/2230-8229.128775]
- 17 **Adhikari P**, Pemminati S, Pathak R, Kotian MS, Ullal S. Prevalence of Hypertension in Bolloor Diabetes Study (BDS-II) and its Risk Factors. *J Clin Diagn Res* 2015; **9**: IC01-IC04 [PMID: 26674015 DOI: 10.7860/JCDR/2015/16509.6781]
- 18 **Dowse GK**, Zimmet PZ, Gareeboo H, George K, Alberti MM, Tuomilehto J, Finch CF, Chitson P, Tulsidas H. Abdominal obesity and physical inactivity as risk factors for NIDDM and impaired glucose tolerance in Indian, Creole, and Chinese Mauritians. *Diabetes Care* 1991; **14**: 271-282 [PMID: 2060430 DOI: 10.2337/diacar.14.4.271]
- 19 **Mohan V**, Shanthirani CS, Deepa R. Glucose intolerance (diabetes and IGT) in a selected South Indian population with special reference to family history, obesity and lifestyle factors--the Chennai Urban Population Study (CUPS 14). *J Assoc Physicians India* 2003; **51**: 771-777 [PMID: 14651136]
- 20 **Kumar S**, Mukherjee S, Mukhopadhyay P, Pandit K, Raychaudhuri M, Sengupta N, Ghosh S, Sarkar S, Mukherjee S, Chowdhury S. Prevalence of diabetes and impaired fasting glucose in a selected population with special reference to influence of family history and anthropometric measurements--the Kolkata policeman study. *J Assoc Physicians India* 2008; **56**: 841-844 [PMID: 19263680]
- 21 **Bharati DR**, Pal R, Kar S, Rekha R, Yamuna TV, Basu M. Prevalence and determinants of diabetes mellitus in Puducherry, South India. *J Pharm Bioallied Sci* 2011; **3**: 513-518 [PMID: 22219584 DOI: 10.4103/0975-7406.90104]
- 22 **Ghorpade AG**, Majgi SM, Sarkar S, Kar SS, Roy G, Ananthanarayanan PH, Das AK. Diabetes in rural Pondicherry, India: a population-based study of the incidence and risk factors. *WHO South East Asia J Public Health* 2013; **2**: 149-155 [PMID: 28615590 DOI: 10.4103/2224-3151.206761]
- 23 **Vijayakumar G**, Arun R, Kutty VR. High prevalence of type 2 diabetes mellitus and other metabolic disorders in rural Central Kerala. *J Assoc Physicians India* 2009; **57**: 563-567 [PMID: 20209716]
- 24 **Singh R**, Kaushal M, Agarwal V. Prevalence of Diabetes Mellitus and its Risk Factors in Urban Population of Agra District: A Community Based Study. *Medical Science* 2015; **5**: 439-439

- 25 **Stata S.** Stata Statistical Software: Release 11.2009. Available from: URL: https://www.researchgate.net/publication/256294412_Stata_Statistical_Software_Release_MP_101
- 26 **Greenland S.** Quantitative methods in the review of epidemiologic literature. *Epidemiol Rev* 1987; **9**: 1-30 [PMID: 3678409 DOI: 10.1093/oxfordjournals.epirev.a036298]
- 27 **Clarke M, Oxman AD.** Review Manager (RevMan) Version 5.0. Copenhagen: The Nordic Cochrane Centre, The Cochrane Collaboration [Computer programme] 2008. Available from: URL: http://xueshu.baidu.com/s?wd=paperuri%3A%286c1387eadc2781b4d929be1db00d0638%29filter=sc_long_sigtntn=SE_xueshu_source_2kduw22vsc_vurl=http%3A%2F%2Fwww.scienceopen.com%2Fdocument%3Fvid%3Da73ee5f0-8d2f-4bea-9e24-d1e8cd7cfef8ie=utf-8sc_us=1249986841050500996
- 28 **Higgins JP, Thompson SG.** Quantifying heterogeneity in a meta-analysis. *Stat Med* 2002; **21**: 1539-1558 [PMID: 12111919 DOI: 10.1002/sim.1186]
- 29 **Harris R, Bradburn M, Deeks J, Sterne JAC.** metan: fixed- and random-effects meta-analysis. *Stata J* 2008; **8**: 3-28 [DOI: 10.1201/9781420064759.ch1]
- 30 **Higgins JP, Thompson SG, Deeks JJ, Altman DG.** Measuring inconsistency in meta-analyses. *BMJ* 2003; **327**: 557-560 [PMID: 12958120 DOI: 10.1136/bmj.327.7414.557]
- 31 **Kannel WB.** Risk stratification in hypertension: new insights from the Framingham Study. *Am J Hypertens* 2000; **13**: 3S-10S [PMID: 10678282 DOI: 10.1016/S0895-7061(99)00252-6]
- 32 **Manicardi V, Camellini L, Bellodi G, Coscelli C, Ferrannini E.** Evidence for an association of high blood pressure and hyperinsulinemia in obese man. *J Clin Endocrinol Metab* 1986; **62**: 1302-1304 [PMID: 3517032 DOI: 10.1210/jcem-62-6-1302]
- 33 **Stevens VJ, Corrigan SA, Obarzanek E, Bernauer E, Cook NR, Hebert P, Mattfeldt-Beman M, Oberman A, Sugars C, Dalcin AT.** Weight loss intervention in phase 1 of the Trials of Hypertension Prevention. The TOHP Collaborative Research Group. *Arch Intern Med* 1993; **153**: 849-858 [PMID: 8466377 DOI: 10.1001/archinte.1993.00410070039006]
- 34 **Basu S, Millett C.** Social epidemiology of hypertension in middle-income countries: Determinants of prevalence, diagnosis, treatment, and control in the WHO SAGE study. *Hypertension* 2013; **62**: 18-26 [PMID: 23670299 DOI: 10.1161/HYPERTENSIONAHA.113.01374]
- 35 **James WP.** The epidemiology of obesity: the size of the problem. *J Intern Med* 2008; **263**: 336-352 [PMID: 18312311 DOI: 10.1111/j.1365-2796.2008.01922.x]
- 36 **Ghosh JR, Bandyopadhyay AR.** Comparative evaluation of obesity measures: relationship with blood pressures and hypertension. *Singapore Med J* 2007; **48**: 232-235 [PMID: 17342293]
- 37 **Gupta R, Gupta V.** Hypertension epidemiology in India: lessons from Jaipur heart watch. *Curr Sci* 2009; **97**: 349-355
- 38 **Diaz ME.** Hypertension and obesity. *J Hum Hypertens* 2002; **16** Suppl 1: S18-S22 [PMID: 11986887 DOI: 10.1038/sj.jhh.1001335]
- 39 **Kotsis V, Nilsson P, Grassi G, Mancia G, Redon J, Luft F, Schmieder R, Engeli S, Stabouli S, Antza C, Pall D, Schlaich M, Jordan J; WG on Obesity, Diabetes, the High Risk Patient, European Society of Hypertension.** New developments in the pathogenesis of obesity-induced hypertension. *J Hypertens* 2015; **33**: 1499-1508 [PMID: 26103132 DOI: 10.1097/HJH.0000000000000645]
- 40 **Mohan V, Deepa R.** Obesity and abdominal obesity in Asian Indians. *Indian J Med Res* 2006; **123**: 593-596 [PMID: 16873902]
- 41 **Gilbert CE, Babu RG, Gudlavalleti AS, Anchala R, Shukla R, Ballabh PH, Vashist P, Ramachandra SS, Allagh K, Sagar J, Bandyopadhyay S, Murthy GV.** Eye care infrastructure and human resources for managing diabetic retinopathy in India: The India 11-city 9-state study. *Indian J Endocrinol Metab* 2016; **20**: S3-S10 [PMID: 27144134 DOI: 10.4103/2230-8210.179768]
- 42 **Maisey A.** A Practical Approach to Gastrointestinal Complications of Diabetes. *Diabetes Ther* 2016; **7**: 379-386 [PMID: 27431262 DOI: 10.1007/s13300-016-0182-y]
- 43 **Bodicoat DH, Gray LJ, Henson J, Webb D, Guru A, Misra A, Gupta R, Vikram N, Sattar N, Davies MJ, Khunti K.** Body mass index and waist circumference cut-points in multi-ethnic populations from the UK and India: the ADDITION-Leicester, Jaipur heart watch and New Delhi cross-sectional studies. *PLoS One* 2014; **9**: e90813 [PMID: 24599391 DOI: 10.1371/journal.pone.0090813]
- 44 **Tobias DK, Pan A, Jackson CL, O'Reilly EJ, Ding EL, Willett WC, Manson JE, Hu FB.** Body-mass index and mortality among adults with incident type 2 diabetes. *N Engl J Med* 2014; **370**: 233-244 [PMID: 24428469 DOI: 10.1056/NEJMoa1304501]
- 45 **Das S.** Nutritional status and profile of NIDDM of recent onset. *J Diab Assoc India* 1998; **28**: 99-101
- 46 **Prabhu M, Sudha V, Shashikiran U.** Clinical Profile of Type 2 Diabetes Mellitus And Body Mass Index-Is There Any Correlation? *Calicut Medical Journal* 2004; **2**: 4
- 47 **Barma PD, Ranabir S, Prasad L, Singh TP.** Clinical and biochemical profile of lean type 2 diabetes mellitus. *Indian J Endocrinol Metab* 2011; **15**: S40-S43 [PMID: 21847453 DOI: 10.4103/2230-8210.83061]
- 48 **Sinharoy K, Mandal L, Chakrabarti S, Paul UK, Bandyopadhyay R, Basu AK.** A study on clinical and biochemical profile of low body weight type 2 diabetes mellitus. *J Indian Med Assoc* 2008; **106**: 747-750 [PMID: 19368101]
- 49 **Unnikrishnan AG, Singh SK, Sanjeevi CB.** Prevalence of GAD65 antibodies in lean subjects with type 2 diabetes. *Ann N Y Acad Sci* 2004; **1037**: 118-121 [PMID: 15699503 DOI: 10.1196/annals.1337.018]
- 50 **Barr EL, Zimmet PZ, Welborn TA, Jolley D, Magliano DJ, Dunstan DW, Cameron AJ, Dwyer T, Taylor HR, Tonkin AM, Wong TY, McNeil J, Shaw JE.** Risk of cardiovascular and all-cause mortality in individuals with diabetes mellitus, impaired fasting glucose, and impaired glucose tolerance: the Australian Diabetes, Obesity, and Lifestyle Study (AusDiab). *Circulation* 2007; **116**: 151-157 [PMID: 17576864 DOI: 10.1161/CIRCULATIONAHA.106.685628]
- 51 **Doehner W, Erdmann E, Cairns R, Clark AL, Dormandy JA, Ferrannini E, Anker SD.** Inverse relation of body weight and weight change with mortality and morbidity in patients with type 2 diabetes and cardiovascular co-morbidity: an analysis of the PROactive study population. *Int J Cardiol* 2012; **162**: 20-26 [PMID: 22037349 DOI: 10.1016/j.ijcard.2011.09.039]
- 52 **Deepa M, Farooq S, Deepa R, Manjula D, Mohan V.** Prevalence and significance of generalized and central body obesity in an urban Asian Indian population in Chennai, India (CURES: 47). *Eur J Clin Nutr* 2009; **63**: 259-267 [PMID: 17928807 DOI: 10.1038/sj.ejcn.1602920]
- 53 **Bhardwaj S, Misra A, Misra R, Goel K, Bhatt SP, Rastogi K, Vikram NK, Gulati S.** High prevalence of abdominal, intra-abdominal and subcutaneous adiposity and clustering of risk factors among urban Asian Indians in North India. *PLoS One* 2011; **6**: e24362 [PMID: 21949711 DOI: 10.1371/journal.pone.0024362]
- 54 **Pradeepa R, Anjana RM, Joshi SR, Bhansali A, Deepa M, Joshi PP, Dhandania VK, Madhu SV, Rao PV, Geetha L, Subashini R, Unnikrishnan R, Shukla DK, Kaur T, Mohan V, Das AK; ICMR-INDIAB Collaborative Study Group.** Prevalence of generalized & abdominal obesity in urban & rural India--the ICMR-INDIAB Study (Phase-I) [ICMR- NDIAB-3]. *Indian J Med Res* 2015; **142**: 139-150 [PMID: 26354211 DOI: 10.4103/0971-5916.164234]
- 55 **Misra A, Vikram NK, Arya S, Pandey RM, Dhingra V, Chatterjee A, Dwivedi M, Sharma R, Luthra K, Guleria R, Talwar KK.** High prevalence of insulin resistance in postpubertal Asian Indian children is associated with adverse truncal body fat patterning, abdominal adiposity and excess body fat. *Int J Obes Relat Metab Disord* 2004; **28**: 1217-1226 [PMID: 15314636 DOI: 10.1038/sj.ijo.0802704]
- 56 **Kelly T, Yang W, Chen CS, Reynolds K, He J.** Global burden of obesity in 2005 and projections to 2030. *Int J Obes (Lond)* 2008; **32**: 1431-1437 [PMID: 18607383 DOI: 10.1038/ijo.2008.102]
- 57 **Popkin BM, Kim S, Rusev ER, Du S, Zizza C.** Measuring the full economic costs of diet, physical activity and obesity-related





Published by **Baishideng Publishing Group Inc**
7901 Stoneridge Drive, Suite 501, Pleasanton, CA 94588, USA
Telephone: +1-925-223-8242
Fax: +1-925-223-8243
E-mail: bpgoffice@wjgnet.com
Help Desk: <http://www.f6publishing.com/helpdesk>
<http://www.wjgnet.com>

