

World Journal of *Gastroenterology*

World J Gastroenterol 2018 January 7; 24(1): 1-160



**EDITORIAL**

- 1 Estrogen, estrogen receptors, and hepatocellular carcinoma: Are we there yet?
Sukocheva OA

REVIEW

- 5 Relationship between intestinal microbiota and ulcerative colitis: Mechanisms and clinical application of probiotics and fecal microbiota transplantation
Shen ZH, Zhu CX, Quan YS, Yang ZY, Wu S, Luo WW, Tan B, Wang XY

MINIREVIEWS

- 15 Updated review on immune factors in pathogenesis of Crohn's disease
Li N, Shi RH

ORIGINAL ARTICLE**Basic Study**

- 23 Construction of an oesophageal cancer-specific ceRNA network based on miRNA, lncRNA, and mRNA expression data
Xue WH, Fan ZR, Li LF, Lu JL, Ma BJ, Kan QC, Zhao J

- 35 Emodin and baicalein inhibit sodium taurocholate-induced vacuole formation in pancreatic acinar cells
Li J, Zhou R, Bie BB, Huang N, Guo Y, Chen HY, Shi MJ, Yang J, Zhang J, Li ZF

Case Control Study

- 46 Increased intestinal mucosal leptin levels in patients with diarrhea-predominant irritable bowel syndrome
Liu DR, Xu XJ, Yao SK

Retrospective Cohort Study

- 58 Correlation between smoking habit and surgical outcomes on viral-associated hepatocellular carcinomas
Kai K, Komukai S, Koga H, Yamaji K, Ide T, Kawaguchi A, Aishima S, Noshiro H

Retrospective Study

- 69 Safety and efficacy of metallic stent for unresectable distal malignant biliary obstruction in elderly patients
Sakai Y, Iwai T, Shimura K, Gon K, Koizumi K, Ijima M, Chiba K, Nakatani S, Sugiyama H, Tsuyuguchi T, Kamisawa T, Maetani I, Kida M
- 76 Short- and long-term outcomes following laparoscopic vs open surgery for pathological T4 colorectal cancer: 10 years of experience in a single center
Yang ZF, Wu DQ, Wang JJ, Lv ZJ, Li Y

- 87 Differential analysis of lymph node metastasis in histological mixed-type early gastric carcinoma in the mucosa and submucosa

Zhong Q, Sun Q, Xu GF, Fan XQ, Xu YY, Liu F, Song SY, Peng CY, Wang L

Observational Study

- 96 HLA-DQ: Celiac disease vs inflammatory bowel disease

Bosca-Watts MM, Minguez M, Planelles D, Navarro S, Rodriguez A, Santiago J, Tosca J, Mora F

- 104 Surgical specimen extraction *via* a prophylactic ileostomy procedure: A minimally invasive technique for laparoscopic rectal cancer surgery

Wang P, Liang JW, Zhou HT, Wang Z, Zhou ZX

Prospective Study

- 112 Characterization of biofilms in biliary stents and potential factors involved in occlusion

Vaishnavi C, Samanta J, Kochhar R

SYSTEMATIC REVIEWS

- 124 Systematic review of colorectal cancer screening guidelines for average-risk adults: Summarizing the current global recommendations

Bénard F, Barkun AN, Martel M, von Renteln D

META-ANALYSIS

- 139 Probiotic monotherapy and *Helicobacter pylori* eradication: A systematic review with pooled-data analysis

Losurdo G, Cubisino R, Barone M, Principi M, Leandro G, Ierardi E, Di Leo A

CASE REPORT

- 150 Long-term survival after gastrectomy and metastasectomy for gastric cancer with synchronous bone metastasis

Choi YJ, Kim DH, Han HS, Han JH, Son SM, Kim DS, Yun HY

- 157 Emergent single-balloon enteroscopy for overt bleeding of small intestinal vascular malformation

Chung CS, Chen KC, Chou YH, Chen KH

ABOUT COVER

Editorial board member of *World Journal of Gastroenterology*, Alexander Link, MD, PhD, Academic Research, Associate Professor, Department of Gastroenterology, Hepatology and Infectious Diseases, Otto-von-Guericke University Hospital Magdeburg, Magdeburg 39120, Germany

AIMS AND SCOPE

World Journal of Gastroenterology (*World J Gastroenterol*, *WJG*, print ISSN 1007-9327, online ISSN 2219-2840, DOI: 10.3748) is a peer-reviewed open access journal. *WJG* was established on October 1, 1995. It is published weekly on the 7th, 14th, 21st, and 28th each month. The *WJG* Editorial Board consists of 642 experts in gastroenterology and hepatology from 59 countries.

The primary task of *WJG* is to rapidly publish high-quality original articles, reviews, and commentaries in the fields of gastroenterology, hepatology, gastrointestinal endoscopy, gastrointestinal surgery, hepatobiliary surgery, gastrointestinal oncology, gastrointestinal radiation oncology, gastrointestinal imaging, gastrointestinal interventional therapy, gastrointestinal infectious diseases, gastrointestinal pharmacology, gastrointestinal pathophysiology, gastrointestinal pathology, evidence-based medicine in gastroenterology, pancreatology, gastrointestinal laboratory medicine, gastrointestinal molecular biology, gastrointestinal immunology, gastrointestinal microbiology, gastrointestinal genetics, gastrointestinal translational medicine, gastrointestinal diagnostics, and gastrointestinal therapeutics. *WJG* is dedicated to become an influential and prestigious journal in gastroenterology and hepatology, to promote the development of above disciplines, and to improve the diagnostic and therapeutic skill and expertise of clinicians.

INDEXING/ABSTRACTING

World Journal of Gastroenterology (*WJG*) is now indexed in Current Contents[®]/Clinical Medicine, Science Citation Index Expanded (also known as SciSearch[®]), Journal Citation Reports[®], Index Medicus, MEDLINE, PubMed, PubMed Central and Directory of Open Access Journals. The 2017 edition of Journal Citation Reports[®] cites the 2016 impact factor for *WJG* as 3.365 (5-year impact factor: 3.176), ranking *WJG* as 29th among 79 journals in gastroenterology and hepatology (quartile in category Q2).

EDITORS FOR THIS ISSUE

Responsible Assistant Editor: Xiang Li
Responsible Electronic Editor: Yan Huang
Proofing Editor-in-Chief: Lian-Sheng Ma

Responsible Science Editor: Ze-Mao Gong
Proofing Editorial Office Director: Jin-Lei Wang

NAME OF JOURNAL
World Journal of Gastroenterology

ISSN
ISSN 1007-9327 (print)
ISSN 2219-2840 (online)

LAUNCH DATE
October 1, 1995

FREQUENCY
Weekly

EDITORS-IN-CHIEF
Damian Garcia-Olmo, MD, PhD, Doctor, Professor, Surgeon, Department of Surgery, Universidad Autonoma de Madrid; Department of General Surgery, Fundacion Jimenez Diaz University Hospital, Madrid 28040, Spain

Stephen C Strom, PhD, Professor, Department of Laboratory Medicine, Division of Pathology, Karolinska Institutet, Stockholm 141-86, Sweden

Andrzej S Tarnawski, MD, PhD, DSc (Med), Professor of Medicine, Chief Gastroenterology, VA Long Beach Health Care System, University of California, Irvine, CA, 5901 E. Seventh Str., Long Beach,

CA 90822, United States

EDITORIAL BOARD MEMBERS
All editorial board members resources online at <http://www.wjgnet.com/1007-9327/editorialboard.htm>

EDITORIAL OFFICE
Ze-Mao Gong, Director
World Journal of Gastroenterology
Baishideng Publishing Group Inc
7901 Stoneridge Drive, Suite 501,
Pleasanton, CA 94588, USA
Telephone: +1-925-2238242
Fax: +1-925-2238243
E-mail: editorialoffice@wjgnet.com
Help Desk: <http://www.f6publishing.com/helpdesk>
<http://www.wjgnet.com>

PUBLISHER
Baishideng Publishing Group Inc
7901 Stoneridge Drive, Suite 501,
Pleasanton, CA 94588, USA
Telephone: +1-925-2238242
Fax: +1-925-2238243
E-mail: bpgoffice@wjgnet.com
Help Desk: <http://www.f6publishing.com/helpdesk>
<http://www.wjgnet.com>

PUBLICATION DATE
January 7, 2018

COPYRIGHT
© 2018 Baishideng Publishing Group Inc. Articles published by this Open-Access journal are distributed under the terms of the Creative Commons Attribution Non-commercial License, which permits use, distribution, and reproduction in any medium, provided the original work is properly cited, the use is non commercial and is otherwise in compliance with the license.

SPECIAL STATEMENT
All articles published in journals owned by the Baishideng Publishing Group (BPG) represent the views and opinions of their authors, and not the views, opinions or policies of the BPG, except where otherwise explicitly indicated.

INSTRUCTIONS TO AUTHORS
Full instructions are available online at <http://www.wjgnet.com/bpg/gerinfo/204>

ONLINE SUBMISSION
<http://www.f6publishing.com>

Basic Study

Emodin and baicalein inhibit sodium taurocholate-induced vacuole formation in pancreatic acinar cells

Jun Li, Rui Zhou, Bei-Bei Bie, Na Huang, Ying Guo, Hai-Yan Chen, Meng-Jiao Shi, Jun Yang, Jian Zhang, Zong-Fang Li

Jun Li, National and Local Joint Engineering Research Center of Biodiagnostics and Biotherapy, the Second Affiliated Hospital of Xi'an Jiaotong University, Xi'an 710004, Shaanxi Province, China

Rui Zhou, Bei-Bei Bie, Na Huang, Ying Guo, Hai-Yan Chen, Meng-Jiao Shi, Jun Yang, Jian Zhang, Zong-Fang Li, National and Local Joint Engineering Research Center of Biodiagnostics and Biotherapy, the Second Affiliated Hospital of Xi'an Jiaotong University, Xi'an 710004, Shaanxi Province, China

ORCID number: Jun Li (0000-0003-4283-7717); Rui Zhou (0000-0001-5897-9918); Bei-Bei Bie (0000-0003-3647-4542); Na Huang (0000-0002-2344-8962); Ying Guo (0000-0003-3674-4258); Hai-Yan Chen (0000-0002-5204-6559); Meng-Jiao Shi (0000-0002-1594-0383); Jun Yang (0000-0002-4965-2929); Jian Zhang (0000-0001-5022-7455); Zong-Fang Li (0000-0003-4813-1176).

Author contributions: Li J and Zhou R contributed equally to this work; Li J, Zhou R and Li ZF designed the research; Li J and Zhou R performed the research; Bie BB, Huang N, Guo Y, Chen HY and Shi MJ contributed new reagents/analytic tools; Li J, Zhou R, Yang J and Zhang J analyzed the data; Li J, Zhou R, Zhang J and Li ZF wrote the paper.

Supported by National Natural Science Foundation of China, No. 30901945; Science Research Foundation of Shaanxi Administration of Traditional Chinese Medicine, No. 15-ZY029; and Science Research Foundation of the Second Affiliated Hospital of Xi'an Jiaotong University, No. RC(XM)201602.

Institutional review board statement: This study was approved by the Ethics Committee of the Second Affiliated Hospital of Xi'an Jiaotong University (Xi'an, China).

Institutional animal care and use committee statement: All animal procedures were approved by the Institutional Animal Care and Use Committee of Xi'an Jiaotong University Health Science Center and performed according to the National Guide for the Care and Use of Laboratory Animals.

Conflict-of-interest statement: The authors declare no conflicts of interest.

Data sharing statement: No additional unpublished data are available.

Open-Access: This article is an open-access article which was selected by an in-house editor and fully peer-reviewed by external reviewers. It is distributed in accordance with the Creative Commons Attribution Non Commercial (CC BY-NC 4.0) license, which permits others to distribute, remix, adapt, build upon this work non-commercially, and license their derivative works on different terms, provided the original work is properly cited and the use is non-commercial. See: <http://creativecommons.org/licenses/by-nc/4.0/>

Manuscript source: Unsolicited manuscript

Correspondence to: Zong-Fang Li, MD, PhD, National and Local Joint Engineering Research Center of Biodiagnostics and Biotherapy, the Second Affiliated Hospital of Xi'an Jiaotong University, Xi'an 710004, Shaanxi Province, China. lzf2568@xjtu.edu.cn
Telephone: +86-29-87678002
Fax: +86-29-87678634

Received: August 31, 2017

Peer-review started: September 3, 2017

First decision: September 27, 2017

Revised: November 23, 2017

Accepted: November 27, 2017

Article in press: November 27, 2017

Published online: January 7, 2018

Abstract

AIM

To investigate the effects of combined use of emodin and baicalein (CEB) at the cellular and organism levels

in severe acute pancreatitis (SAP) and explore the underlying mechanism.

METHODS

SAP was induced by retrograde infusion of 5% sodium taurocholate into the pancreatic duct in 48 male SD rats. Pancreatic histopathology score, serum amylase activity, and levels of tumour necrosis factor alpha (TNF- α), interleukin 6 (IL-6), and IL-10 were determined to assess the effects of CEB at 12 h after the surgery. The rat pancreatic acinar cells were isolated from healthy male SD rats using collagenase. The cell viability, cell ultrastructure, intracellular free Ca²⁺ concentration, and inositol (1,4,5)-trisphosphate receptor (IP₃R) expression were investigated to assess the mechanism of CEB.

RESULTS

Pancreatic histopathology score (2.07 ± 1.20 vs 6.84 ± 1.13 , $P < 0.05$) and serum amylase activity (2866.2 ± 617.7 vs 5241.3 ± 1410.0 , $P < 0.05$) were significantly decreased in the CEB (three doses) treatment group compared with the SAP group (2.07 ± 1.20 vs 6.84 ± 1.13 , $P < 0.05$). CEB dose-dependently reduced the levels of the pro-inflammatory cytokines IL-6 (466.82 ± 48.55 vs 603.50 ± 75.53 , $P < 0.05$) and TNF- α (108.04 ± 16.10 vs 215.56 ± 74.67 , $P < 0.05$) and increased the level of the anti-inflammatory cytokine IL-10 (200.96 ± 50.76 vs 54.18 ± 6.07 , $P < 0.05$) compared with those in the SAP group. CEB increased cell viability, inhibited cytosolic Ca²⁺ concentration, and significantly ameliorated intracellular vacuoles and IP₃ mRNA expression compared with those in the SAP group ($P < 0.05$). There was a trend towards decreased IP₃R protein in the CEB treatment group; however, it did not reach statistical significance ($P > 0.05$).

CONCLUSION

These results at the cellular and organism levels reflect a preliminary mechanism of CEB in SAP and indicate that CEB is a suitable approach for SAP treatment.

Key words: Inositol (1,4,5)-trisphosphate receptor; Severe acute pancreatitis; Calcium overload; Emodin; Baicalein; Pancreatic acinar cell

© The Author(s) 2018. Published by Baishideng Publishing Group Inc. All rights reserved.

Core tip: Combined use of emodin and baicalein (CEB) was found to act on key aspects of severe acute pancreatitis (SAP) pathogenesis; it regulated inflammatory factors and inhibited calcium overload, which underlie this synergy. These results at the cellular and organism levels reflect a preliminary mechanism of CEB in SAP and indicate that the development of CEB is promising for the treatment of patients with SAP.

Li J, Zhou R, Bie BB, Huang N, Guo Y, Chen HY, Shi MJ, Yang J, Zhang J, Li ZF. Emodin and baicalein inhibit sodium

taurocholate-induced vacuole formation in pancreatic acinar cells. *World J Gastroenterol* 2018; 24(1): 35-45 Available from: URL: <http://www.wjgnet.com/1007-9327/full/v24/i1/35.htm> DOI: <http://dx.doi.org/10.3748/wjg.v24.i1.35>

INTRODUCTION

Severe acute pancreatitis (SAP) is a debilitating disease that is characterized by an acute onset, serious complications, and significant morbidity and mortality^[1]. Currently, the somatostatin analogue octreotide is the most frequently used drug in SAP therapy^[2,3]. However, not all patients are treated with octreotide due to its short half-life *in vivo* and high cost. Identifying other safe, effective, and inexpensive drugs for the treatment of SAP remains necessary.

Traditional Chinese medicines (TCMs) have shown efficacy in the management of many inflammatory diseases^[4]. The most famous formula for the treatment of SAP is Qingyi decoction, which is composed of rheum, Chinese thoroughwort root, white peony root, baikal skullcap root, coptis chinensis, and other herbs and has been advocated for more than one hundred years in China^[5,6]. Qingyi decoction has exhibited good therapeutic effects in individuals with SAP in many clinical and pre-clinical studies^[7-9]. However, use of this decoction is limited because patients are not allowed access to food and water in the acute stage. Furthermore, the formulation of this TCM is difficult to standardize due to the large number of herbs in one decoction. Guided by the theories of TCM and modern medicine and the compatibility of herbs, we refined Qingyi decoction and combined emodin and baicalein into "Compound Emodin and Baicalein" (CEB, patent No. ZL200310105814.3).

Emodin and baicalein are the active ingredients in rheum and baikal skullcap root and have an identified chemical constitution^[10,11]. Emodin has been reported to block the development of SAP^[12]. In our previous study, we were the first to show that baicalein protected against pancreatic injury in rats with SAP and exhibited inhibitory effects on pro-inflammatory cytokine production^[11]. Furthermore, CEB had a beneficial effect on SAP in rats, which is similar to the effect of octreotide^[13-15]. However, the underlying mechanisms remain unknown. We aimed to investigate the above problems, which are crucial for the study and development of CEB. Here, we report that CEB exhibited a good effect on SAP rats, decreased the serum levels of pro-inflammatory cytokines, and increased the levels of anti-inflammatory factors *in vivo*. CEB attenuated inositol (1,4,5)-trisphosphate receptor (IP₃R) mRNA expression and inhibited calcium overload in pancreatic acinar cells. Therefore, we suggest that CEB might be a novel drug for SAP treatment in the future.

Table 1 Criteria for microscopic assessment

Histological pattern	Assessment	Score
Edema	Mild	1
	Moderate	2
	Severe	3
Inflammatory infiltration	Mild	1
	Moderate	2
	Severe	3
Fat necrosis	< 2/section	3
	3-5/section	5
	> 5/section	7
Parenchymal necrosis	Focal (< 5%)	3
	And/or sublobular (< 20%)	5
	And/or lobular (> 20%)	7
Hemorrhage	Mild	3
	Moderate	5
	Severe	7

MATERIALS AND METHODS

Animals

Adult male Sprague-Dawley (SD) rats (weighing 220 ± 10 g) were obtained from the Experimental Animal Center of Xi'an Jiaotong University Health Science Center and were housed at 23 ± 2 °C under a 12-h light/dark cycle. The animals were fasted overnight before the start of the experiments with free access to water. All animal procedures were approved by the Institutional Animal Care and Use Committee of Xi'an Jiaotong University Health Science Center and performed according to the National Guide for the Care and Use of Laboratory Animals.

Induction of SAP

SAP was induced *via* a retrograde infusion of 5% sodium taurocholate into the pancreatic duct as previously described^[16]. The animals were anaesthetized with sodium pentobarbital (50 mg/kg, Sigma-Aldrich), and the abdomen was opened *via* a midline incision. First, we identified the common bile duct and duodenum. The pancreatic bile duct was occluded with two microvascular clamps to prevent reflux. In total, 5% sodium taurocholate was injected into the pancreatic duct at a dose of 0.1 mL/100 g body weight (at an injection velocity of 0.1 mL/min). Then, the injection site was pressed for 3 min and the surgery was completed by abdominal stratified closing. Special attention was focused on the atraumatic surgical technique. The humane killing was performed 12 h after the operation to determine the severity of SAP.

Therapeutic effects of CEB

In total, SAP was induced in 48 SD rats *via* a retrograde injection of 5% sodium taurocholate into the common biliopancreatic duct. All SAP rats were randomly divided into four groups, including an SAP model group and three CEB groups (the low-dose group received a 1.6 mg/kg dose of emodin combined

with a 3.5 mg/kg dose of baicalein; the middle-dose group received a 3.2 mg/kg dose of emodin combined with a 7 mg/kg dose of baicalein; and the high-dose group received a 6.4 mg/kg dose of emodin combined with a 14 mg/kg dose of baicalein). An additional 24 normal SD rats were separated into two groups: a normal group and a sham operation (SO) group. The normal group did not undergo the procedure. In the SO group, the incisions were closed immediately after turning over the pancreas. CEB was injected *via* the tail vein to animals of the three CEB treatment groups immediately after surgical operation. SO and SAP rats were given the same amount of normal saline. Pancreatic histopathology score, serum amylase activity, and levels of tumour necrosis factor- α (TNF- α), interleukin (IL)-6, and IL-10 were determined 12 h after the surgery.

Histology

The pancreatic tissue was fixed in 4% paraformaldehyde for 24 h, dehydrated, and embedded in paraffin using a routine protocol as previously described^[11]. The embedded tissue was sliced at a 4- μ m thickness and stained using haematoxylin and eosin (H&E). The histology scores of the sections were independently evaluated by two experienced investigators who were blinded to the group assignment. Ten random fields per slide were examined in the histopathological analysis of each pancreas. The grading criteria were as follows: oedema, acinar necrosis, haemorrhage, and inflammatory cell infiltration (Table 1). The final score of each section was the summation of each pathological parameter^[17]. Finally, the mean ± SD was calculated (2 slides/rat, ≥ 6 rats/group).

Enzyme activity and cytokine level measurement

Serum amylase activity was measured using an automatic biochemistry analyser (Roche, Basel, Switzerland). Serum IL-6, TNF- α , and IL-10 levels were determined using enzyme-linked immunosorbent assay kits (Neobioscience Biotech, Shenzhen, China and eBioscience, San Diego, USA) according to the manufacturers' protocols. The absorbance was read at 450 nm (620 nm as the reference wavelength) using a microplate reader (BioTek Inc., Winooski, VT, United States).

Isolation of pancreatic acinar cells from healthy rats

Pancreatic acinar cells were isolated as described by Williams *et al.*^[18] with slight modifications. Briefly, the pancreas was incubated with 5 mL of digestion solution, consisting of collagenase (NB8 Broad Range, 0.1 g/L, Serva) and a trypsin inhibitor (0.1 g/L, Sigma). The digestion solution was injected (at multiple loci) into the pancreatic parenchyma until it was well distended. After 10 min, the pancreas was cut into 2-4-mm pieces, followed by shaking for 15 min

in a 37 °C water bath (120 cycles per minute). Next, 5 mL of fresh digestion solution was added to the pancreas. The digestion period was repeated 3 times, and the liquids were then collected and combined. The tissue was then gently pipetted through the pipette tip. After the filtration and centrifugation, the resultant cell pellet was resuspended in the culture medium and preincubated at 37 °C for 30 min for the subsequent experiments. All obtained pancreatic acinar cells were identified under a transmission electron microscope.

Cell viability assay

The cells were incubated with various concentrations of sodium taurocholate (final concentrations of 1, 2, 4, 6, 8, and 10 mmol/L) for 10, 20, 30, 40, and 50 min. The cell viability was determined using an MTT assay^[19] to identify an appropriate concentration of sodium taurocholate for subsequent cell experiments.

The pancreatic acinar cells were divided into three groups, including a control group, an SAP model group, and a CEB group. The effects of CEB on the cell viability were determined using an MTT assay. The cells were preincubated with or without CEB (final concentration of 3.3 µmol/L) for 10 min prior to sodium taurocholate (final concentration of 8 mM) irritation. After an additional 30 min incubation with sodium taurocholate, the cell viability was measured using an MTT assay. The normal cells were treated with different concentrations of CEB (1.65, 3.3, 6.6, 13.2, 26.4, 52.8, and 105.6 µmol/L), and an MTT assay was performed. All experiments were performed in triplicate and repeated at least three times.

The cells were preincubated with various concentrations of CEB (final concentrations of 1.65, 3.3, 6.6, 13.2, 26.4, 52.8, and 105.6 µmol/L) for 30 min. The optical density value was detected using an MTT assay to assess the reliability of CEB at the cellular level.

Cell ultrastructural observation

The cells were pre-treated with or without CEB (final concentration of 3.3 µmol/L) for 10 min. Sodium taurocholate (1 mmol/L) was added to the cells as a stimulus for 1 min, immediately followed by washing with the PBS buffer, pelleting by centrifugation at 200 *g* for 1 min, and fixing using 2.5% prechilled glutaraldehyde at 4 °C for 24 h. The samples were then immersed in 1% osmium tetroxide at room temperature for 2 h and then uranyl acetate for the same period. The cells were dehydrated in serial solutions of ethanol and acetone before being embedded in epoxy resins. Then, 50-nm ultrathin sections were stained with lead citrate and mounted on 200-mesh copper grids. The cell ultrastructure was observed under a Hitachi H-7650 (Tokyo) transmission electron microscope.

Intracellular free Ca²⁺ measurement

Isolated pancreatic acinar cells were pre-treated with or without CEB (final concentration of 3.3 µmol/L) for

10 min. The cell suspension was washed once with PBS and incubated with fluo-3 AM (5 µmol/L, Invitrogen) for 30 min in the dark, followed by three washes with PBS. Then, 2 mL of PBS were added to the cells and incubated for an additional 30 min. Sodium taurocholate (1 mmol/L) was added to the cells as a stimulus. The cells were imaged on a live cell imaging system to assess the cytosolic Ca²⁺ concentration using fluo-3 AM (488 nm) immediately after the stimulus was applied, and the recording time was maintained at 60 s. The fluorescence intensity represented the relative intracellular Ca²⁺ concentration.

Detection of IP₃R expression

The cells were stimulated with sodium taurocholate as described above, immediately followed by washing with PBS and pelleting by centrifugation at 200 *g* for 1 min. Total RNA and protein were purified from the acinar cells according to the manufacturer's instructions (Ambion, Pierce). The protein and mRNA levels of IP₃R were quantified by RT-PCR and Western blot, respectively, as previously described^[20].

Statistical analysis

The assays were performed in triplicate. All data are expressed as mean ± SD. Statistical comparisons were performed using *t*-tests or analysis of variance with SPSS 19.0 (SPSS Inc.). A *P*-value < 0.05 was considered statistically significant.

RESULTS

CEB protects against pancreatic injury in SAP rats

The SO group showed an entirely normal acinar architecture. The SAP group demonstrated pancreatic injury characterized by gross tissue oedema, sublobular haemorrhage, cell lysis associated with obvious neutrophil infiltration, and parenchymal necrosis. Treatment with CEB ameliorated pancreatic injury and decreased the histopathology score (Figure 1A and B, *P* < 0.05).

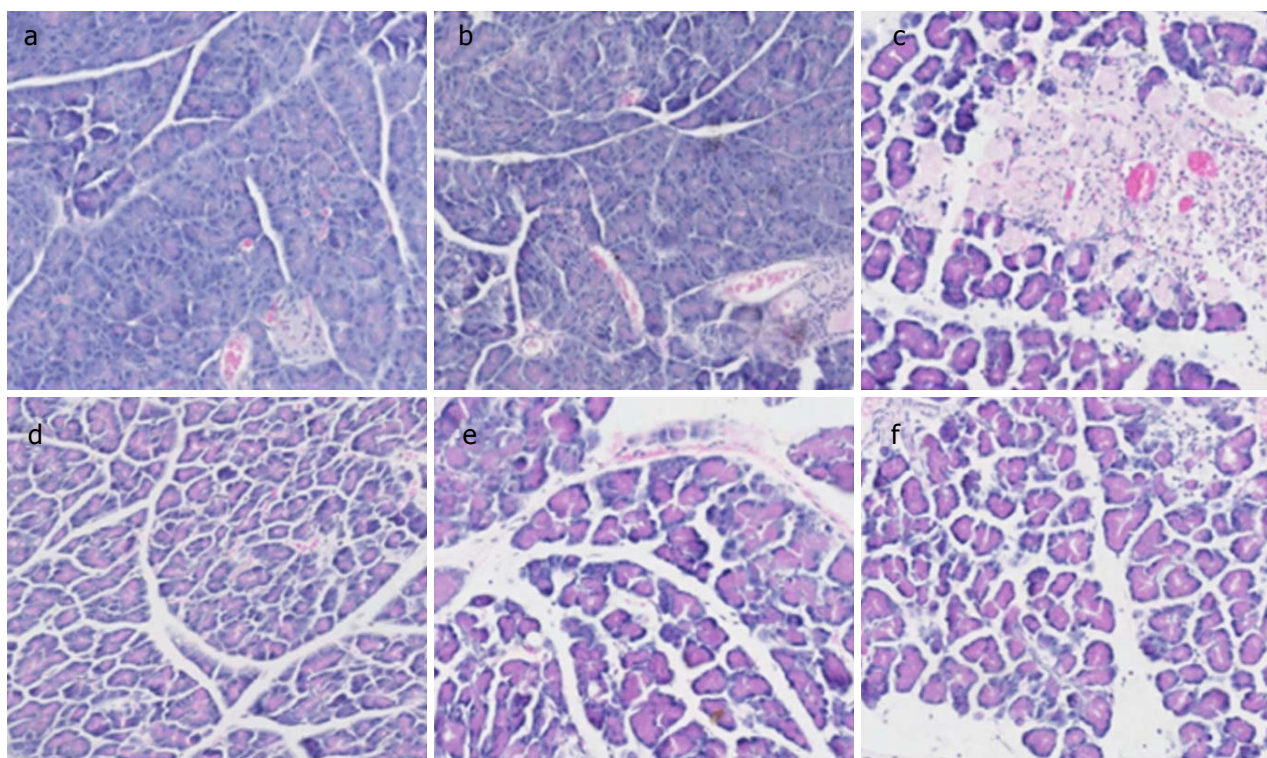
CEB alleviates amylase activity and inflammatory response in SAP rats

Serum amylase activity and levels of IL-6, TNF-α, and IL-10 in the SAP group were significantly increased compared to those in the SO group. Treatment with CEB decreased serum amylase activity and TNF-α level but increased the level of IL-10 at all the three doses (Figure 1C and D, *P* < 0.05). CEB decreased serum IL-6 level in SAP rats at high and middle doses (Figure 1D, *P* < 0.05). There was also a trend towards decreased IL-6 level at low dose; however, it did not reach statistical significance.

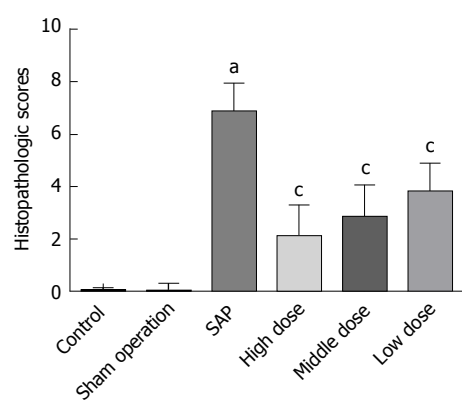
CEB increases the viability of sodium taurocholate-stimulated acinar cells

Different concentrations of sodium taurocholate induced

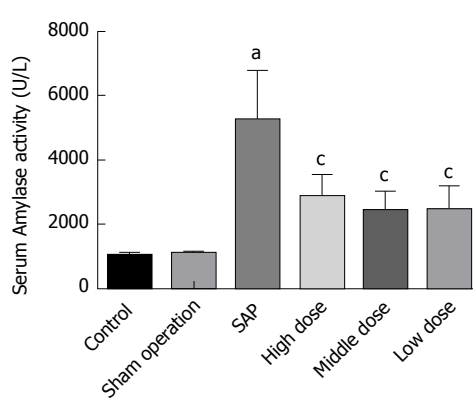
A



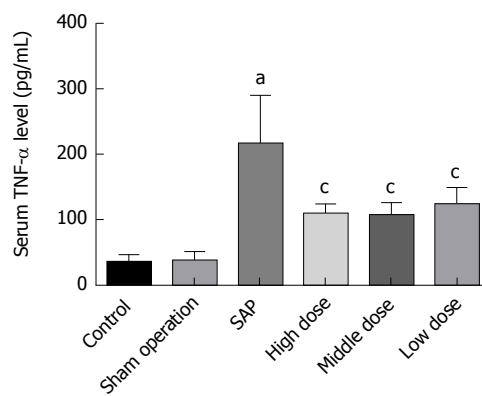
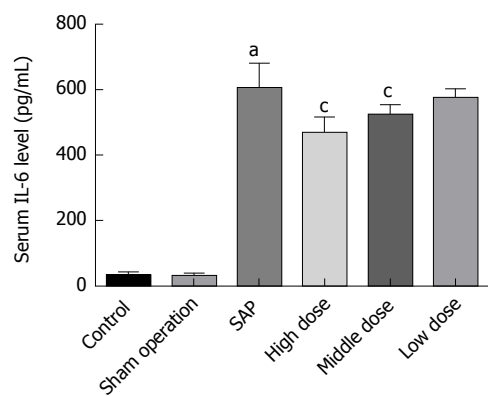
B



C



D



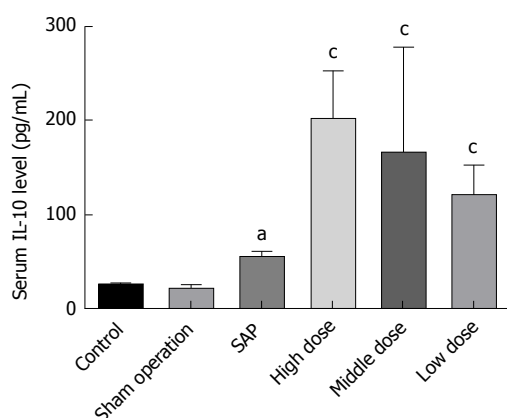


Figure 1 Therapeutic effects of combined use of emodin and baicalein on severe acute pancreatitis rats. Animals received CEB or an equal amount of saline injection after the SAP induction. CEB at high, middle, and low doses was administered immediately after the SAP induction. Animals were sacrificed 12 h after the SAP induction and were assessed for (A) representative images of pancreatic histopathology in all groups (H&E, $\times 100$). (a) Control group; (b) SO group; (c) SAP group; (d) CEB high-dose group; (e) CEB middle-dose group; (f) CEB low-dose group. B: Histopathology score evaluation; C: Serum amylase; D: Serum cytokines. The data represent the mean \pm SD. ^a $P < 0.05$ vs the control group; ^c $P < 0.05$ vs the SAP group.

Table 2 The duration of cells sustained at high calcium concentration

Group	Duration of cells sustained at high calcium concentration (s)
Control	0 ± 0.03
SAP	30 ± 1.77^a
CEB	5 ± 1.80^c

^a $P < 0.05$ vs control group; ^c $P < 0.05$ vs SAP group. SAP: Severe acute pancreatitis; CEB: Combined use of emodin and baicalein.

a decrease in cell viability (Figure 2A, $P < 0.05$). Cell viability decreased in a dose- and time- dependent manner after sodium taurocholate treatment. Compared to the control group, cell viability was decreased in the SAP group. Pretreatment with CEB could increase the viability of cells treated with 8 mmol/L sodium taurocholate and showed dose-dependent protective effects at 1.65-3.3 $\mu\text{mol/L}$ (Figure 2B, $P < 0.05$). Moreover, CEB alone had no adverse effect on the normal cells at either low or high concentration (Figure 2C, $P > 0.05$).

CEB alleviates sodium taurocholate-induced intracellular vacuole formation

The normal cells showed characteristics that are typical of secretory polarized cells, including slick plasmalemma and a roundish nucleus in the basal region of the cell. The rough endoplasmic reticulum (ER) was abundant and arranged in the parallel cisternae in the basal region, and numerous ribosomes were present on the membrane of the ER. Many zymogen granules (ZGs) were observed in the apical region of the cell. The mitochondria exhibited a spherical shape, and well-developed cristae were observed in the basal region of the cell (Figure 2D, a and d). In the SAP group, after the 1-min stimulation

with 1 mmol/L sodium taurocholate, major changes were observed in the cellular ultrastructure, including the rupture of the plasmalemma, formation of abnormal vacuoles in the cytoplasm, dilatation and degranulation of the ER, lysis of the membranes of the rough ER, and a marked reduction in the density of the normal ZGs (Figure 2D, b and e). In cells that were preincubated with 3.3 $\mu\text{mol/L}$ CEB for 10 min, the vacuolization, cytolysis, and degranulation of the ER were significantly alleviated (Figure 2D, c and f).

CEB decreases cytosolic Ca^{2+} concentration and down-regulates expression of IP_3R

In the control group, there was no change in the cell fluorescence intensity over time (Figure 3A and B, a). In the SAP group, the cell fluorescence intensity immediately increased within 2 s of adding the irritant sodium taurocholate to the cells compared with that before the stimulation. The cell fluorescence intensity lasted for 30 s at a high Ca^{2+} concentration and then began to decline (Figure 3A and B, b). In the CEB group, the cell fluorescence intensity increased within the first 2 s after the sodium taurocholate suscitation and was sustained by the high calcium concentration for 5 s before beginning to decline (Figure 3A and B, c). Thus, the duration during which the cells survived in a high Ca^{2+} plateau decreased in the CEB preincubated cells compared to that in the cells that were not preincubated with CEB (Table 2, $P < 0.05$).

Compared with the control group, the three isoforms of IP_3R mRNA and IP_3R protein were increased in the SAP group. CEB preincubation caused a significant decrease in the mRNA expression of the three IP_3R isoforms (Figure 4A, $P < 0.05$). In the presence of CEB, there was also a trend towards decreased IP_3R protein; however, it did not reach statistical significance (Figure

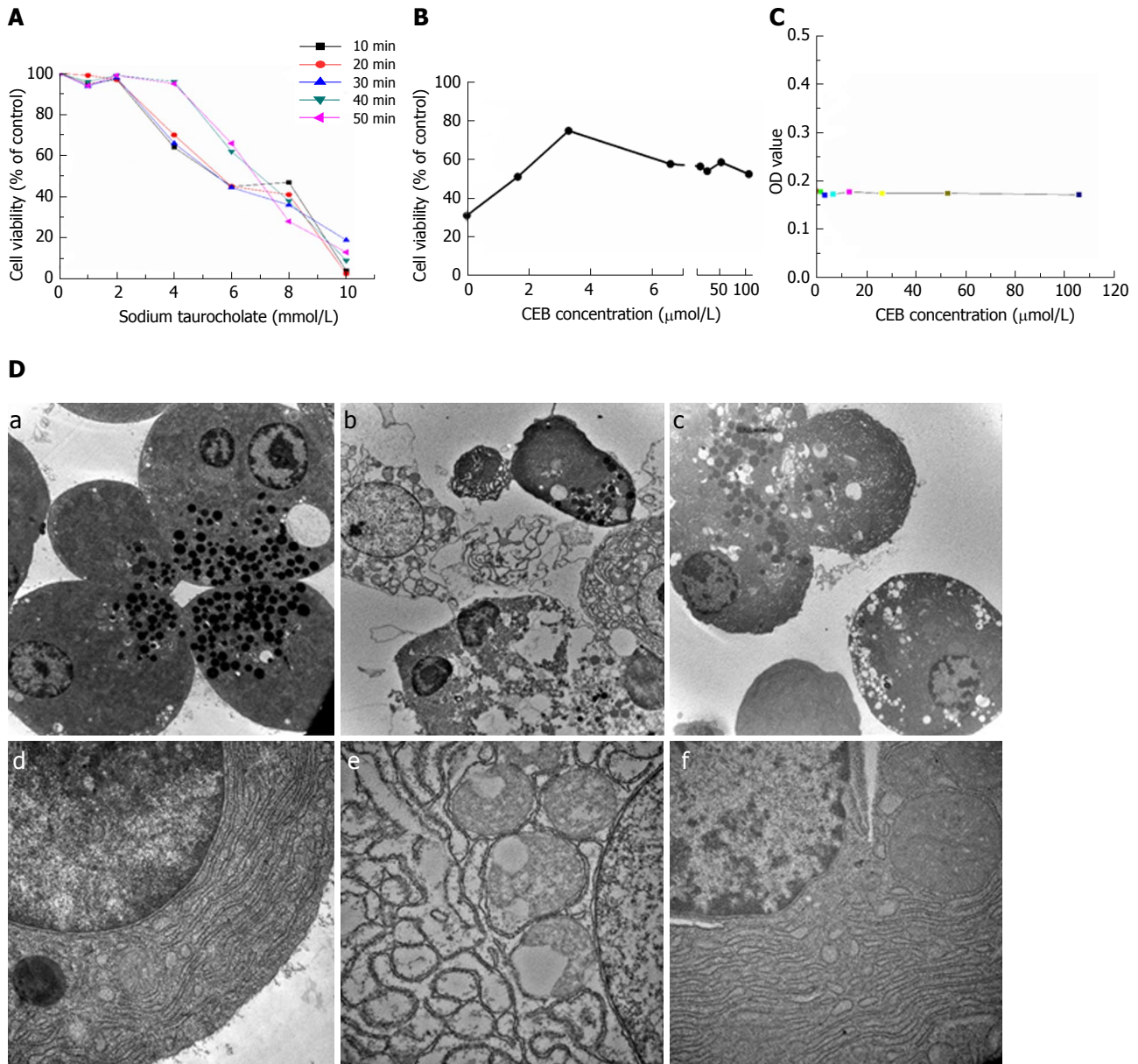


Figure 2 CEB alleviates cell injury in pancreatic acinar cells. A: The cell viability decreased in a concentration- and time-dependent manner after sodium taurocholate treatment. B: CEB pretreatment increased the viability of cells treated with 8 mM sodium taurocholate and showed dose-dependent protective effects at 1.65–3.3 $\mu\text{mol/L}$. C: CEB alone had no adverse effect on normal pancreatic acinar cells at either low or high concentration, which suggested its reliability at the cellular level. D: Ultrastructure of pancreatic acinar cells. (a and d) Normal acinar cells showed ZGs concentrated in the apical pole of the cell, slick plasmalemma, and a roundish nucleus in the basal region of the cell. The rough ER was abundant and arranged in the parallel cisternae in the basal region, and numerous ribosomes were present on the membrane of the ER. (b and e) Acinar cells after a 1-min stimulation with sodium taurocholate. Plasmalemma was ruptured, and vacuoles accumulated in the cytoplasm. The ER was dilated and degranulated with lytic membranes. The ZG density also showed a marked reduction. (c and f) Acinar cells preincubated with CEB for 10 min. Vacuolization, cytolysis, and degranulation of ER were significantly alleviated (a–c, $\times 5000$; d–f, $\times 30000$).

4B and C, $P > 0.05$).

DISCUSSION

The famous TCM Qingyi decoction has been shown to have clinical benefits in the treatment of SAP^[5,7]. However, the challenges associated with its oral administration, complex components, and difficult-to-control quality limit its application and formulation. We refined Qingyi decoction and devised a compound formula with independent intellectual property rights,

comprising emodin and baicalein, which we call CEB^[13,14]. The components of CEB are the monomers emodin and baicalein, and the properties of CEB include clear configuration, controllable quality, and therapeutic effects following an intravenous injection in SAP rats; thus, CEB could be further developed for the treatment of patients with SAP and is worth further investigation. Our previous study has shown that the combination of emodin and baicalein exhibits good efficacy in SAP rats^[13,15]. However, the specific mechanism remains unknown.

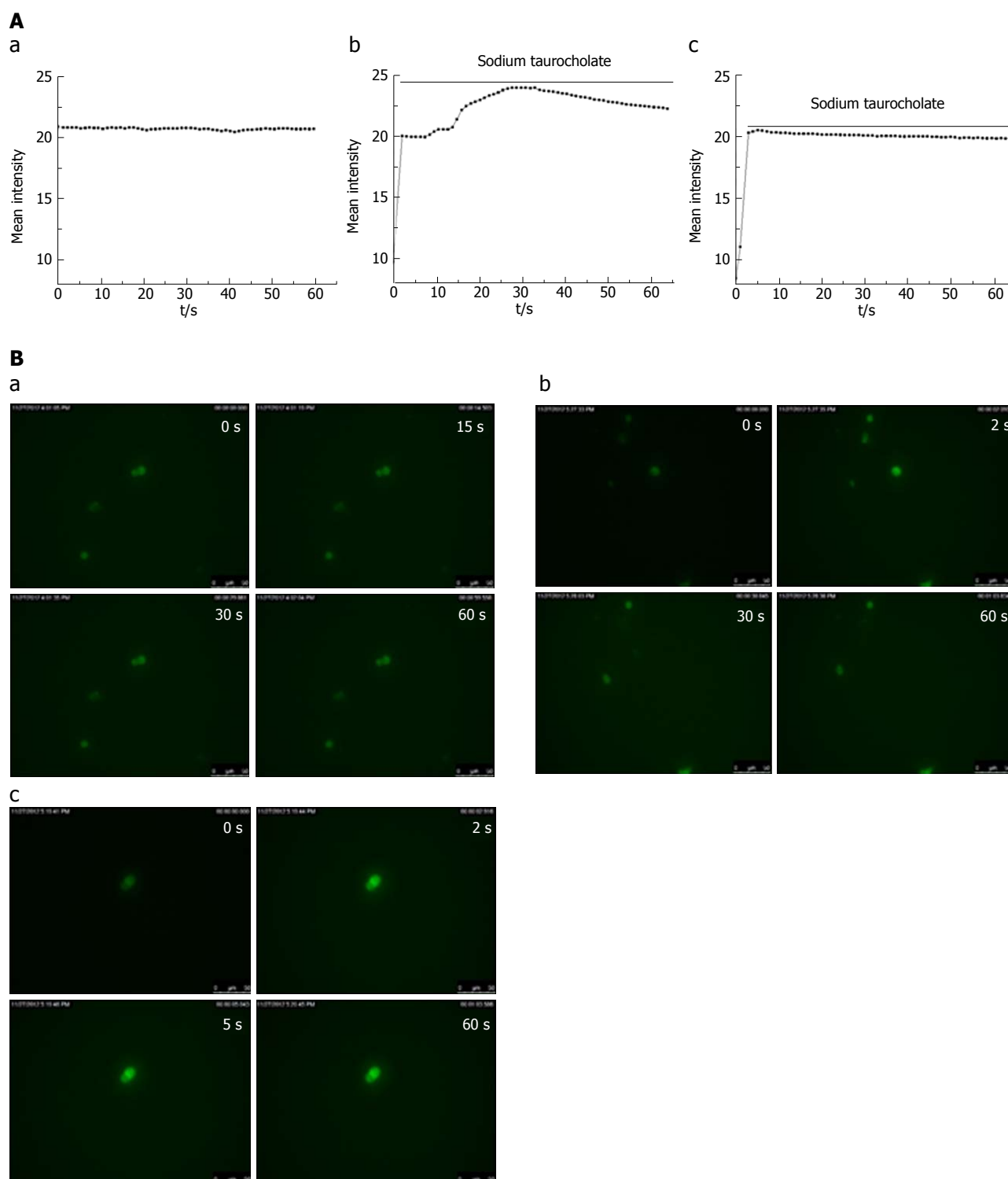


Figure 3 CEB inhibits sodium taurocholate-induced Ca^{2+} overload in isolated pancreatic acinar cells. Cell fluorescence intensity represents the cell calcium concentration. **A:** Dynamic change in the calcium concentration induced by sodium taurocholate was inhibited by CEB: (a) Unaltered fluorescence intensity over time in the control group. (b) Cell fluorescence intensity was strengthened immediately within 2 s of the sodium taurocholate irritation and lasted at a high calcium concentration for 30 s, followed by a decrease in the SAP group. (c) Cell fluorescence intensity was increased within the first 2 s after the sodium taurocholate suscitation, was sustained at a high calcium concentration for 5 s, and then began to decrease in the CEB group. **B:** Cell images at representative time points. (a) Control group. (b) SAP group. (c) CEB group.

The pathogenesis of SAP remains poorly understood^[21]. One hypothesis posits that inflammatory reactions are crucial for the pathogenesis of SAP^[22]. Local inflammatory reactions in the pancreas lead to

systemic inflammatory response syndrome (SIRS) and multiorgan failure (MOF), which is believed to be the primary cause of mortality^[23]. $\text{TNF-}\alpha$ and IL-6 are known principal pro-inflammatory cytokines that

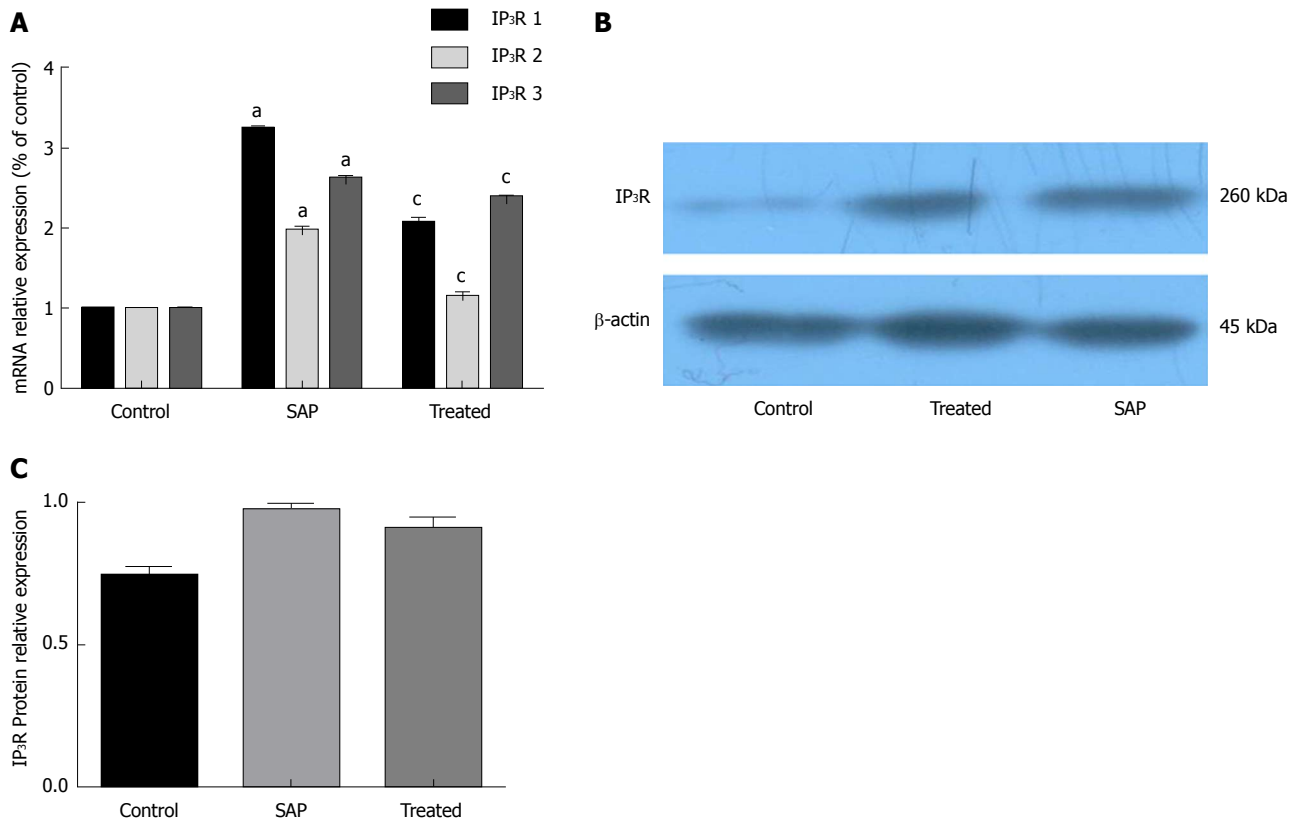


Figure 4 CEB decreases the expression of IP₃R in pancreatic acinar cells. A: Effects of CEB on the mRNA expression of three isoforms of IP₃R ($P < 0.05$). B and C: CEB caused a reduced trend of IP₃R protein expression but showed no significant difference ($P > 0.05$). ^a $P < 0.05$ vs the control group; ^c $P < 0.05$ vs the SAP group.

participate in the initiation and progression of SAP and have been identified as the key cytokines mediating pancreatitis-associated lung injury^[11]. IL-10 has important anti-inflammatory activities and is strongly associated with the severity of SAP^[24]. IL-10 is believed to play a protective role in SAP. In our study, we similarly found that serum levels of IL-6, TNF- α , and IL-10 were considerably higher in the SAP group than in the SO group. CEB reduced the pro-inflammatory cytokines IL-6 and TNF- α and increased the anti-inflammatory cytokine IL-10 after the induction of SAP.

The pathological diagnosis is a significant index for evaluating the severity of SAP. Amylase activity is an enzymatic marker, and the serum amylase test is routinely performed for the clinical diagnosis of SAP. In this study, CEB significantly alleviated pancreatic injury and decreased pancreatic histopathology score in the SAP model. Therefore, we conclude that CEB can down-regulate the pro-inflammatory cytokines IL-6 and TNF- α , up-regulate the anti-inflammatory cytokine, and decrease the serum amylase activity, thus reducing the pathologic score and ameliorating pancreatic injury. Therefore, the therapeutic effect of CEB on SAP warrants further study.

Ca²⁺ overload is the earliest crucial event in the pathogenesis of many diseases^[25]. In pancreatic acinar cells, pathological Ca²⁺ overload is a critical trigger that initiates cell injury due to sustained global Ca²⁺ elevations, resulting in enzyme activation,

vacuolization, and necrosis, all of which are crucial for the development of pancreatitis^[26]. Emodin can inhibit pancreatic enzyme levels and calcium channels^[27]. Baicalein has been reported to have antibacterial, antiviral, anti-inflammatory, and calcium blocker properties in cardiomyocytes^[11,28]. However, whether CEB can inhibit Ca²⁺ overload during the development of SAP remains unclear. We used pancreatic acinar cells prepared from healthy rats that were induced by sodium taurocholate as an SAP model at the cellular level and observed the effect of CEB. In our study, sodium taurocholate exerted a cellular Ca²⁺ overload, leading to decreased cell viability, intracellular vacuole formation, and cellular injury. However, CEB inverted this impairment and did not show a cytotoxic effect in normal acinar cells, revealing its safety and hinting at the mechanism of CEB action.

IP₃R is a principal Ca²⁺-releasing channel that is concentrated in the ER membrane, and the opening of this channel is coordinated by the binding of IP₃ and the activation of gated Ca²⁺ channels that release intracellularly stored Ca²⁺ from the ER to regulate the cellular Ca²⁺ environment^[29]. In our study, at the cellular level, CEB decreased the sodium taurocholate-induced intracellular Ca²⁺ and IP₃R mRNA expression in isolated rat pancreatic acinar cells. Thus, CEB exerts effects on the inhibition of the acinar cell calcium overload, possibly representing its underlying mechanism in SAP cells. The protein expression changes required a

certain amount of time. To detect the calcium changes, we performed the observations 60 s after the sodium taurocholate stimulation, which may explain why the IP₃R protein expression showed a slight decline and no statistical significance in the CEB group compared with that in the SAP group.

In summary, CEB was found to act on the key aspects of SAP pathogenesis and resulted in the regulation of inflammatory factors and the inhibition of calcium overload, which underlie this synergy. These results at the cellular and organism levels reflect a preliminary mechanism of CEB in SAP and suggest potential clinical benefits. Although research on CEB remains at the preclinical level, and data on its use in humans are lacking, CEB may be a potential future treatment for SAP, suggesting that further studies are needed.

ARTICLE HIGHLIGHTS

Research background

Severe acute pancreatitis (SAP) is a debilitating disease with significant morbidity and mortality. Somatostatin analogue octreotide is the most frequently used drug but not all patients can afford its high cost and short half-life *in vivo*. Guided by the theories of TCM and modern medicine and the compatibility of herbs, we refined the classic prescription Qingyi decoction and combined emodin and baicalein into "Compound Emodin and Baicalein" (CEB, patent No. ZL200310105814.3). This research may provide a novel, safe, effective, and inexpensive drug for SAP treatment in the future.

Research motivation

The aim of this study was to explicate the effect and mechanism of CEB in SAP therapy and provides potential clinical benefits for the future treatment of SAP.

Research objectives

The SAP rats and the isolated pancreatic acinar cells were the main objectives in this study. Meanwhile, they also served as the main objectives of research on SAP at the cellular and organism levels.

Research methods

Retrograde infusion of 5% sodium taurocholate into the pancreatic duct is the frequently used method for SAP model induction. Serum cytokine levels were determined using enzyme-linked immunosorbent assay. Tissue section were stained using haematoxylin and eosin (H&E) for histopathologic detection. Pancreatic acinar cells were isolated using collagenase digestion and the cell viability was determined using an MTT assay. Cell ultrastructure was observed using a transmission electron microscope. Intracellular Ca²⁺ concentration was determined using a live cell imaging system. The protein and mRNA levels of IP₃R were quantified by RT-PCR and Western blot, respectively.

Research results

The results showed that CEB can regulate inflammatory factors, increase cell viability, and inhibit calcium overload, which underlie a preliminary mechanism of CEB in SAP. Although research on CEB remains at the preclinical level, and data on its use in humans are lacking, CEB may be a potential future treatment for SAP, suggesting that further studies are needed.

Research conclusions

Emodin and baicalein display synergistic effects on SAP rats. CEB acts on the key aspects of SAP pathogenesis and regulates of inflammatory factors in SAP rats. CEB suppresses IP₃R-mediated pancreatic acinar Ca²⁺ overload via inhibiting IP₃R mRNA expression in pancreatic acinar cells. As a non-toxic natural product, CEB is the first to show a therapeutic effect at the cellular and

organism levels in SAP. CEB is promising for the treatment of patients with SAP.

Research perspectives

From this study, the characteristics of abundance, low cost, and safety of traditional Chinese medicine in SAP therapy should catch our attention. We think that the potential of traditional Chinese medicine in SAP therapy will be the direction of the future research. In our opinion, the SAP animal model and the isolated pancreatic acinar cells will always be the main avenues in this study.

REFERENCES

- 1 **Yadav D**, Lowenfels AB. The epidemiology of pancreatitis and pancreatic cancer. *Gastroenterology* 2013; **144**: 1252-1261 [PMID: 23622135 DOI: 10.1053/j.gastro.2013.01.068]
- 2 **Xu W**, Zhou YF, Xia SH. Octreotide for primary moderate to severe acute pancreatitis: A meta-analysis. *Hepatogastroenterology* 2013; **60**: [PMID: 23591732 DOI: 10.5754/hge13063]
- 3 **Uhl W**, Büchler MW, Malfertheiner P, Beger HG, Adler G, Gaus W. A randomised, double blind, multicentre trial of octreotide in moderate to severe acute pancreatitis. *Gut* 1999; **45**: 97-104 [PMID: 10369711]
- 4 **Liu JS**, Wei XD, Lu ZB, Xie P, Zhou HL, Chen YY, Ma JM, Yu LZ. Liang-Ge-San, a classic traditional Chinese medicine formula, protects against lipopolysaccharide-induced inflammation through cholinergic anti-inflammatory pathway. *Oncotarget* 2016; **7**: 21222-21234 [PMID: 27034013 DOI: 10.18632/oncotarget.8452]
- 5 **Zhang JW**, Zhang GX, Chen HL, Liu GL, Owusu L, Wang YX, Wang GY, Xu CM. Therapeutic effect of Qingyi decoction in severe acute pancreatitis-induced intestinal barrier injury. *World J Gastroenterol* 2015; **21**: 3537-3546 [PMID: 25834318 DOI: 10.3748/wjg.v21.i12.3537]
- 6 **Li J**, Zhang S, Zhou R, Zhang J, Li ZF. Perspectives of traditional Chinese medicine in pancreas protection for acute pancreatitis. *World J Gastroenterol* 2017; **23**: 3615-3623 [PMID: 28611514 DOI: 10.3748/wjg.v23.i20.3615]
- 7 **Ji CH**, Tang CW, Feng WM, Bao Y, Yao LQ. A Chinese Herbal Decoction, Huoxue Qingyi Decoction, Promotes Rehabilitation of Patients with Severe Acute Pancreatitis: A Retrospective Study. *Evid Based Complement Alternat Med* 2016; **2016**: 3456510 [PMID: 27110265 DOI: 10.1155/2016/3456510]
- 8 **Zhu FS**, Zhu GY, Huang DP, Shen XY, Yang CQ, Gao HJ. [Effect of Qingyi Decoction on gene expression profiles of severe acute pancreatitis rats by gene chip technique]. *Zhongguo Zhong Xi Yi Jie He Za Zhi* 2014; **34**: 51-55 [PMID: 24520788]
- 9 **Zhang XM**, Chen HL, Wang ZH. [Expression of secretory type II phospholipase A₂ in acute lung injury following acute pancreatitis and interventional effect of Qingyi decoction on it]. *Zhongguo Wei Zhong Bing Ji Jiu Yi Xue* 2010; **22**: 518-521 [PMID: 20854728]
- 10 **Liu Z**, Ma N, Zhong Y, Yang ZQ. Antiviral effect of emodin from *Rheum palmatum* against coxsackievirus B5 and human respiratory syncytial virus in vitro. *J Huazhong Univ Sci Technolog Med Sci* 2015; **35**: 916-922 [PMID: 26670446 DOI: 10.1007/s11596-015-1528-9]
- 11 **Li J**, Wu Y, Zhang S, Zhang J, Ji F, Bo W, Guo X, Li Z. Baicalein protect pancreatic injury in rats with severe acute pancreatitis by inhibiting pro-inflammatory cytokines expression. *Biochem Biophys Res Commun* 2015; **466**: 664-669 [PMID: 26393905 DOI: 10.1016/j.bbrc.2015.09.094]
- 12 **Yao WY**, Zhou YF, Qian AH, Zhang YP, Qiao MM, Zhai ZK, Yuan YZ, Yang SL. Emodin has a protective effect in cases of severe acute pancreatitis via inhibition of nuclear factor-κB activation resulting in antioxidation. *Mol Med Rep* 2015; **11**: 1416-1420 [PMID: 25351888 DOI: 10.3892/mmr.2014.2789]
- 13 **Li ZF**, Xia XM, Huang C, Zhang S, Zhang J, Zhang AJ. Emodin and baicalein inhibit pancreatic stromal derived factor-1 expression in rats with acute pancreatitis. *Hepatobiliary Pancreat Dis Int* 2009; **8**: 201-208 [PMID: 19357036]

- 14 **Zhang XP**, Li ZF, Liu XG, Wu YT, Wang JX, Wang KM, Zhou YF. Effects of emodin and baicalein on rats with severe acute pancreatitis. *World J Gastroenterol* 2005; **11**: 2095-2100 [PMID: 15810074 DOI: 10.3748/wjg.v11.i14.2095]
- 15 **Li Z**, Xia X, Zhang S, Zhang A, Bo W, Zhou R. Up-regulation of Toll-like receptor 4 was suppressed by emodin and baicalin in the setting of acute pancreatitis. *Biomed Pharmacother* 2009; **63**: 120-128 [PMID: 18343629 DOI: 10.1016/j.biopha.2008.01.003]
- 16 **Schmidt J**, Rattner DW, Lewandrowski K, Compton CC, Mandavilli U, Knoefel WT, Warshaw AL. A better model of acute pancreatitis for evaluating therapy. *Ann Surg* 1992; **215**: 44-56 [PMID: 1731649]
- 17 **Spormann H**, Sokolowski A, Letko G. Effect of temporary ischemia upon development and histological patterns of acute pancreatitis in the rat. *Pathol Res Pract* 1989; **184**: 507-513 [PMID: 2748464 DOI: 10.1016/S0344-0338(89)80143-8]
- 18 **Williams JA**. Isolation of rodent pancreatic acinar cells and acini by collagenase digestion. The Pancreapedia: Exocrine Pancreas Knowledge Base, 2010
- 19 **Chen K**, Zhang S, Ji Y, Li J, An P, Ren H, Liang R, Yang J, Li Z. Baicalein inhibits the invasion and metastatic capabilities of hepatocellular carcinoma cells via down-regulation of the ERK pathway. *PLoS One* 2013; **8**: e72927 [PMID: 24039823 DOI: 10.1371/journal.pone.0072927]
- 20 **Bie B**, Sun J, Li J, Guo Y, Jiang W, Huang C, Yang J, Li Z. Baicalein, a Natural Anti-Cancer Compound, Alters MicroRNA Expression Profiles in Bel-7402 Human Hepatocellular Carcinoma Cells. *Cell Physiol Biochem* 2017; **41**: 1519-1531 [PMID: 28351032 DOI: 10.1159/000470815]
- 21 **Jakkampudi A**, Jangala R, Reddy BR, Mitnala S, Nageshwar Reddy D, Talukdar R. NF- κ B in acute pancreatitis: Mechanisms and therapeutic potential. *Pancreatol* 2016; **16**: 477-488 [PMID: 27282980 DOI: 10.1016/j.pan.2016.05.001]
- 22 **Penido A**, Coelho AM, Molan NT, Silva FP, D'Albuquerque LA, Machado MC. Do opioid receptors play a role in the pathogenesis of the inflammatory response in acute pancreatitis? *Acta Cir Bras* 2012; **27**: 600-605 [PMID: 22936083]
- 23 **Shrivastava P**, Bhatia M. Essential role of monocytes and macrophages in the progression of acute pancreatitis. *World J Gastroenterol* 2010; **16**: 3995-4002 [PMID: 20731012]
- 24 **Zhou X**, Liu Z, Jang F, Xiang C, Li Y, He Y. Autocrine Sonic hedgehog attenuates inflammation in cerulein-induced acute pancreatitis in mice via upregulation of IL-10. *PLoS One* 2012; **7**: e44121 [PMID: 22956998 DOI: 10.1371/journal.pone.0044121]
- 25 **Li J**, Zhou R, Zhang J, Li ZF. Calcium signaling of pancreatic acinar cells in the pathogenesis of pancreatitis. *World J Gastroenterol* 2014; **20**: 16146-16152 [PMID: 25473167 DOI: 10.3748/wjg.v20.i43.16146]
- 26 **Petersen OH**, Sutton R. Ca²⁺ signalling and pancreatitis: effects of alcohol, bile and coffee. *Trends Pharmacol Sci* 2006; **27**: 113-120 [PMID: 16406087 DOI: 10.1016/j.tips.2005.12.006]
- 27 **Wu L**, Cai B, Liu X, Cai H. Emodin attenuates calcium overload and endoplasmic reticulum stress in AR42J rat pancreatic acinar cells. *Mol Med Rep* 2014; **9**: 267-272 [PMID: 24190079 DOI: 10.3892/mmr.2013.1773]
- 28 **Chen HM**, Hsu JH, Liou SF, Chen TJ, Chen LY, Chiu CC, Yeh JL. Baicalein, an active component of *Scutellaria baicalensis* Georgi, prevents lysophosphatidylcholine-induced cardiac injury by reducing reactive oxygen species production, calcium overload and apoptosis via MAPK pathways. *BMC Complement Altern Med* 2014; **14**: 233 [PMID: 25012390 DOI: 10.1186/1472-6882-14-233]
- 29 **Lopez LF**, Dawson SP. Luminal Ca(2+) dynamics during IP3R mediated signals. *Phys Biol* 2016; **13**: 036006 [PMID: 27232767 DOI: 10.1088/1478-3975/13/3/036006]

P- Reviewer: Bramhall S, Tsoulfas G, Yago MD **S- Editor:** Gong ZM
L- Editor: Wang TQ **E- Editor:** Huang Y





Published by **Baishideng Publishing Group Inc**
7901 Stoneridge Drive, Suite 501, Pleasanton, CA 94588, USA
Telephone: +1-925-223-8242
Fax: +1-925-223-8243
E-mail: bpgoffice@wjgnet.com
Help Desk: <http://www.f6publishing.com/helpdesk>
<http://www.wjgnet.com>



ISSN 1007-9327

