

# World Journal of *Gastroenterology*

*World J Gastroenterol* 2017 December 28; 23(48): 8439-8678



**EDITORIAL**

- 8439 Serum levels of angiotensin converting enzyme as a biomarker of liver fibrosis

*Miranda AS, Simões e Silva AC*

**MINIREVIEWS**

- 8443 Mechanisms of autophagy activation in endothelial cell and their targeting during normothermic machine liver perfusion

*Boteon YL, Laing R, Mergental H, Reynolds GM, Mirza DF, Afford SC, Bhogal RH*

**ORIGINAL ARTICLE****Basic Study**

- 8452 Human small intestine is capable of restoring barrier function after short ischemic periods

*Schellekens DH, Hundscheid IH, Leenarts CA, Grootjans J, Lenaerts K, Buurman WA, Dejong CH, Derikx JP*

- 8465 Stable gastric pentadecapeptide BPC 157 in treatment of colitis and ischemia and reperfusion in rats: New insights

*Duzel A, Vlajnic J, Antunovic M, Malekinusic D, Vrdoljak B, Samara M, Gojkovic S, Krezic I, Vidovic T, Bilic Z, Knezevic M, Sever M, Lojo N, Kokot A, Kolovrat M, Drmic D, Vukojevic J, Kralj T, Kasnik K, Siroglavic M, Seiwerth S, Sikiric P*

- 8489 Exploring pathogenesis of primary biliary cholangitis by proteomics: A pilot study

*Deng CW, Wang L, Fei YY, Hu CJ, Yang YJ, Peng LY, Zeng XF, Zhang FC, Li YZ*

- 8500 Influence of TBX21 T-1993C variant on autoimmune hepatitis development by Yin-Yang 1 binding

*Sun W, Wu HY, Chen S*

- 8512 Astragaloside IV inhibits pathological functions of gastric cancer-associated fibroblasts

*Wang ZF, Ma DG, Zhu Z, Mu YP, Yang YY, Feng L, Yang H, Liang JQ, Liu YY, Liu L, Lu HW*

**Retrospective Cohort Study**

- 8526 Prevalence and outcomes of pancreatic cystic neoplasms in liver transplant recipients

*Liu K, Joshi V, van Camp L, Yang QW, Baars JE, Strasser SI, McCaughan GW, Majumdar A, Saxena P, Kaffes AJ*

**Retrospective Study**

- 8533 Analysis of 12 variants in the development of gastric and colorectal cancers

*Cavalcante GC, Amador MA, Ribeiro dos Santos AM, Carvalho DC, Andrade RB, Pereira EE, Fernandes MR, Costa DF, Santos NP, Assumpção PP, Ribeiro dos Santos Á, Santos S*

- 8544** Childhood-onset inflammatory bowel diseases associated with mutation of Wiskott-Aldrich syndrome protein gene

*Ohya T, Yanagimachi M, Iwasawa K, Umetsu S, Sogo T, Inui A, Fujisawa T, Ito S*

- 8553** Comparison of totally laparoscopic total gastrectomy using an endoscopic linear stapler with laparoscopic-assisted total gastrectomy using a circular stapler in patients with gastric cancer: A single-center experience

*Gong CS, Kim BS, Kim HS*

- 8562** Prognostic significance of pretreatment serum carcinoembryonic antigen levels in gastric cancer with pathological lymph node-negative: A large sample single-center retrospective study

*Xiao J, Ye ZS, Wei SH, Zeng Y, Lin ZM, Wang Y, Teng WH, Chen LC*

- 8570** Fecal microbiota transplantation induces remission of infantile allergic colitis through gut microbiota re-establishment

*Liu SX, Li YH, Dai WK, Li XS, Qiu CZ, Ruan ML, Zou B, Dong C, Liu YH, He JY, Huang ZH, Shu SN*

- 8582** Prognostic value of lymph node metastasis in patients with T1-stage colorectal cancer from multiple centers in China

*Sun ZQ, Ma S, Zhou QB, Yang SX, Chang Y, Zeng XY, Ren WG, Han FH, Xie X, Zeng FY, Sun XT, Wang GX, Li Z, Zhang ZY, Song JM, Liu JB, Yuan WT*

### Clinical Trial Study

- 8591** Association between acute pancreatitis and small intestinal bacterial overgrowth assessed by hydrogen breath test

*Zhang M, Zhu HM, He F, Li BY, Li XC*

### Observational Study

- 8597** Endoscopic papillary large balloon dilatation with sphincterotomy is safe and effective for biliary stone removal independent of timing and size of sphincterotomy

*Aujla UI, Ladep N, Dwyer L, Hood S, Stern N, Sturgess R*

- 8605** Person-centered endoscopy safety checklist: Development, implementation, and evaluation

*Dubois H, Schmidt PT, Creutzfeldt J, Bergenmar M*

### Randomized Clinical Trials

- 8615** Multicenter, randomized study to optimize bowel preparation for colon capsule endoscopy

*Kastenberg D, Burch WC, Romeo DP, Kashyap PK, Pound DC, Papageorgiou N, Fernández-Urien Sainz I, Sokach CE, Rex DK*

**SYSTEMATIC REVIEWS**

- 8626** *Fusobacterium's* link to colorectal neoplasia sequenced: A systematic review and future insights

*Hussan H, Clinton SK, Roberts K, Bailey MT*

- 8651** Psychiatric morbidity after surgery for inflammatory bowel disease: A systematic review

*Zangenberg MS, El-Hussuna A*

**CASE REPORT**

- 8660** Stricturing Crohn's disease-like colitis in a patient treated with belatacept

*Bozon A, Jeantet G, Rivière B, Funakoshi N, Dufour G, Combes R, Valats JC, Delmas S, Serre JE, Bismuth M, Ramos J, Le Quintrec M, Blanc P, Pineton de Chambrun G*

- 8666** Emphysematous pancreatitis associated with penetrating duodenal ulcer

*Tana C, Silingardi M, Giamberardino MA, Cipollone F, Meschi T, Schiavone C*

- 8671** Infiltrative xanthogranulomatous cholecystitis mimicking aggressive gallbladder carcinoma: A diagnostic and therapeutic dilemma

*Nacif LS, Hessheimer AJ, Rodríguez Gómez S, Montironi C, Fondevila C*



ABOUT COVER

Editorial board member of *World Journal of Gastroenterology*, Paola Iovino, MD, Associate Professor, Lecturer, Department of Medicine and Surgery, AOU San Giovanni di Dio e Ruggi di Aragona, Salerno 84131, Italy

AIMS AND SCOPE

*World Journal of Gastroenterology* (*World J Gastroenterol*, *WJG*, print ISSN 1007-9327, online ISSN 2219-2840, DOI: 10.3748) is a peer-reviewed open access journal. *WJG* was established on October 1, 1995. It is published weekly on the 7<sup>th</sup>, 14<sup>th</sup>, 21<sup>st</sup>, and 28<sup>th</sup> each month. The *WJG* Editorial Board consists of 1375 experts in gastroenterology and hepatology from 68 countries.

The primary task of *WJG* is to rapidly publish high-quality original articles, reviews, and commentaries in the fields of gastroenterology, hepatology, gastrointestinal endoscopy, gastrointestinal surgery, hepatobiliary surgery, gastrointestinal oncology, gastrointestinal radiation oncology, gastrointestinal imaging, gastrointestinal interventional therapy, gastrointestinal infectious diseases, gastrointestinal pharmacology, gastrointestinal pathophysiology, gastrointestinal pathology, evidence-based medicine in gastroenterology, pancreatology, gastrointestinal laboratory medicine, gastrointestinal molecular biology, gastrointestinal immunology, gastrointestinal microbiology, gastrointestinal genetics, gastrointestinal translational medicine, gastrointestinal diagnostics, and gastrointestinal therapeutics. *WJG* is dedicated to become an influential and prestigious journal in gastroenterology and hepatology, to promote the development of above disciplines, and to improve the diagnostic and therapeutic skill and expertise of clinicians.

INDEXING/ABSTRACTING

*World Journal of Gastroenterology* (*WJG*) is now indexed in Current Contents<sup>®</sup>/Clinical Medicine, Science Citation Index Expanded (also known as SciSearch<sup>®</sup>), Journal Citation Reports<sup>®</sup>, Index Medicus, MEDLINE, PubMed, PubMed Central and Directory of Open Access Journals. The 2017 edition of Journal Citation Reports<sup>®</sup> cites the 2016 impact factor for *WJG* as 3.365 (5-year impact factor: 3.176), ranking *WJG* as 29<sup>th</sup> among 79 journals in gastroenterology and hepatology (quartile in category Q2).

FLYLEAF

I-IX Editorial Board

EDITORS FOR  
THIS ISSUE

Responsible Assistant Editor: Xiang Li  
Responsible Electronic Editor: Yu-Jie Ma  
Proofing Editor-in-Chief: Lian-Sheng Ma

Responsible Science Editor: Ze-Mao Gong  
Proofing Editorial Office Director: Jin-Lei Wang

NAME OF JOURNAL  
*World Journal of Gastroenterology*

ISSN  
ISSN 1007-9327 (print)  
ISSN 2219-2840 (online)

LAUNCH DATE  
October 1, 1995

FREQUENCY  
Weekly

EDITORS-IN-CHIEF  
**Damian Garcia-Olmo, MD, PhD, Doctor, Professor, Surgeon**, Department of Surgery, Universidad Autonoma de Madrid; Department of General Surgery, Fundacion Jimenez Diaz University Hospital, Madrid 28040, Spain

**Stephen C Strom, PhD, Professor**, Department of Laboratory Medicine, Division of Pathology, Karolinska Institutet, Stockholm 141-86, Sweden

**Andrzej S Tarnawski, MD, PhD, DSc (Med), Professor of Medicine, Chief Gastroenterology**, VA Long Beach Health Care System, University of California, Irvine, CA, 5901 E. Seventh Str., Long Beach,

CA 90822, United States

EDITORIAL BOARD MEMBERS  
All editorial board members resources online at <http://www.wjgnet.com/1007-9327/editorialboard.htm>

EDITORIAL OFFICE  
Jin-Lei Wang, Director  
Ze-Mao Gong, Vice Director  
*World Journal of Gastroenterology*  
Baishideng Publishing Group Inc  
7901 Stoneridge Drive, Suite 501,  
Pleasanton, CA 94588, USA  
Telephone: +1-925-2238242  
Fax: +1-925-2238243  
E-mail: [editorialoffice@wjgnet.com](mailto:editorialoffice@wjgnet.com)  
Help Desk: <http://www.f6publishing.com/helpdesk>  
<http://www.wjgnet.com>

PUBLISHER  
Baishideng Publishing Group Inc  
7901 Stoneridge Drive, Suite 501,  
Pleasanton, CA 94588, USA  
Telephone: +1-925-2238242  
Fax: +1-925-2238243  
E-mail: [bpgoffice@wjgnet.com](mailto:bpgoffice@wjgnet.com)  
Help Desk: <http://www.f6publishing.com/helpdesk>  
<http://www.wjgnet.com>

PUBLICATION DATE  
December 28, 2017

COPYRIGHT  
© 2017 Baishideng Publishing Group Inc. Articles published by this Open-Access journal are distributed under the terms of the Creative Commons Attribution Non-commercial License, which permits use, distribution, and reproduction in any medium, provided the original work is properly cited, the use is non commercial and is otherwise in compliance with the license.

SPECIAL STATEMENT  
All articles published in journals owned by the Baishideng Publishing Group (BPG) represent the views and opinions of their authors, and not the views, opinions or policies of the BPG, except where otherwise explicitly indicated.

INSTRUCTIONS TO AUTHORS  
Full instructions are available online at <http://www.wjgnet.com/bpg/gerinfo/204>

ONLINE SUBMISSION  
<http://www.f6publishing.com>

## Retrospective Cohort Study

# Prevalence and outcomes of pancreatic cystic neoplasms in liver transplant recipients

Ken Liu, Vikram Joshi, Louise van Camp, Qi-Wei Yang, Judith E Baars, Simone I Strasser, Geoffrey W McCaughan, Avik Majumdar, Payal Saxena, Arthur J Kaffes

Ken Liu, Qi-Wei Yang, Simone I Strasser, Geoffrey W McCaughan, Arthur Kaffes, Sydney Medical School, The University of Sydney, NSW 2006, Australia

Ken Liu, Vikram Joshi, Judith E Baars, Simone I Strasser, Geoffrey W McCaughan, Avik Majumdar, Payal Saxena, Arthur J Kaffes, AW Morrow Gastroenterology and Liver Centre, Royal Prince Alfred Hospital, Camperdown, NSW 2050, Australia

Louise van Camp, Department of Radiology, Royal Prince Alfred Hospital, Camperdown, NSW 2050, Australia

ORCID number: Ken Liu (0000-0002-0453-3168); Vikram Joshi (0000-0001-6344-0677); Louise van Camp (0000-0002-8094-0873); Qi Wei Yang (0000-0002-3523-0530); Judith Elisabeth Baars (0000-0003-2634-0655); Simone Irene Strasser (0000-0001-6374-1525); Geoffrey William McCaughan (0000-0002-1483-1636); Avik Majumdar (0000-0003-2975-4327); Payal Saxena (0000-0003-3097-6314); Arthur J Kaffes (0000-0003-1487-8159).

**Author contributions:** Liu K, Baars JE, Kaffes AJ, Saxena P, Strasser SI, Majumdar A and McCaughan GW conceived and designed the research; Liu K, Joshi V, Yang QW and van Camp L acquired the data; Liu K analyzed and interpreted the data; Liu K and van Camp L drafted the article; Liu K, van Camp L, Joshi V, Yang QW, Baars JE, Strasser SI, Majumdar A, Saxena P, McCaughan GW, Majumdar A critically revised the article; all authors read and approved the final version.

**Institutional review board statement:** The study was reviewed and approved by the Sydney Local Health District Human Research Ethics Committee (X15-0426 & LNR/15/RPAH/570).

**Informed consent statement:** As this is a large retrospective study of over 800 patients, it was not feasible to obtain informed consent. All patient data are anonymized and therefore risk of identification is low.

**Conflict-of-interest statement:** All authors have no conflicts of interest to declare with respect to this work.

**Data sharing statement:** No additional data are available

**Open-Access:** This article is an open-access article which was selected by an in-house editor and fully peer-reviewed by external reviewers. It is distributed in accordance with the Creative Commons Attribution Non Commercial (CC BY-NC 4.0) license, which permits others to distribute, remix, adapt, build upon this work non-commercially, and license their derivative works on different terms, provided the original work is properly cited and the use is non-commercial. See: <http://creativecommons.org/licenses/by-nc/4.0/>

**Manuscript source:** Invited manuscript

**Correspondence to:** Arthur J Kaffes, FRACP, MBBS, Associate Professor, Sydney Medical School, University of Sydney, AW Morrow Gastroenterology and Liver Centre, Level 9, Royal Prince Alfred Hospital, Missenden Road, Camperdown, Sydney, NSW 2050, Australia. [arthur.kaffes@sydney.edu.au](mailto:arthur.kaffes@sydney.edu.au)  
**Telephone:** +61-2-95162033  
**Fax:** +61-2-95160778

**Received:** October 28, 2017  
**Peer-review started:** October 30, 2017  
**First decision:** November 21, 2017  
**Revised:** November 27, 2017  
**Accepted:** December 13, 2017  
**Article in press:** December 13, 2017  
**Published online:** December 28, 2017

## Abstract

### AIM

To determine the prevalence, characteristics and clinical course of pancreatic cystic neoplasms (PCNs) in liver transplantation (LT) recipients.

### METHODS

We retrospectively studied consecutive patients

who underwent LT between January 1998 to April 2016. Clinical and laboratory data were obtained from patient medical records. Imaging findings on computed tomography and magnetic resonance cholangiopancreatography were reviewed by two radiologists.

### RESULTS

During the study period, 872 patients underwent cadaveric LT. Pancreatic cysts were identified in 53/872 (6.1%) and 31/53 (58.5%) were PCNs [28 intraductal papillary mucinous neoplasm (IPMN), 2 mucinous cystic neoplasm (MCN), 1 serous cystadenoma]. Patients with PCNs exhibited less male predominance (55% *vs* 73%,  $P = 0.03$ ) compared to patients without pancreatic cysts. Thirteen patients (42%) were diagnosed with PCN pre-LT while 18 patients (58%) developed PCN post-LT. The median size of PCNs was 13mm [interquartile range (IQR) 10-20 mm]. All IPMNs were side-branch type. Most PCNs were found in the head and body of pancreas (37% each), followed by the tail (25%). Five patients underwent further evaluation with endoscopic ultrasound. Progress imaging was performed on 81% of patients. PCNs remained stable in size and number in all but 2 patients. During a median follow up of 39 mo (IQR 26-58 mo), the 2 (6%) patients with MCN underwent pancreatectomy. No PCN patient developed pancreatic adenocarcinoma, while 5 died from illnesses unrelated to the PCN. Among patients without PCN, 1/841 (0.1%) developed pancreatic adenocarcinoma.

### CONCLUSION

The prevalence of PCNs in LT recipients was similar to the general population (3.6%, 31/872). Side-branch IPMNs do not appear to have accelerated malignant potential in post-LT patients, indicating the current surveillance guidelines are applicable to this group.

**Key words:** Pancreatic cystic neoplasm; Intraductal papillary mucinous neoplasm; Mucinous cystic neoplasm; Liver transplantation; Pancreatic adenocarcinoma; Immunosuppression

© The Author(s) 2017. Published by Baishideng Publishing Group Inc. All rights reserved.

**Core tip:** The prevalence of pancreatic cystic neoplasms (PCNs) in liver transplantation (LT) recipients is similar to that of the general population and PCNs do not appear to behave more aggressively in this setting. Our results suggest that current surveillance guidelines can be safely applied in the immunosuppressed LT population.

Liu K, Joshi V, van Camp L, Yang QW, Baars JE, Strasser SI, McCaughan GW, Majumdar A, Saxena P, Kaffes AJ. Prevalence and outcomes of pancreatic cystic neoplasms in liver transplant recipients. *World J Gastroenterol* 2017; 23(48): 8526-8532 Available from: URL: <http://www.wjgnet.com/1007-9327/full/v23/i48/8526.htm> DOI: <http://dx.doi.org/10.3748/wjg.v23.i48.8526>

## INTRODUCTION

Pancreatic cystic lesions are a common incidental finding in asymptomatic adults undergoing abdominal imaging, with a quoted prevalence of 2%-13%<sup>[1,2]</sup>. While 80% of pancreatic cysts are non-neoplastic (simple cysts, pseudocysts, retention cysts), some are considered to be premalignant lesions and require surveillance<sup>[3]</sup>. These cysts with neoplastic potential are classified as pancreatic cystic neoplasms (PCNs) of which the two most common types are intraductal papillary mucinous neoplasm (IPMN) and mucinous cystic neoplasm (MCNs). Currently, the assessment of malignant progression risk in PCNs mainly focuses on cyst type and characteristics including size, presence of a solid component and main pancreatic duct dilatation<sup>[4,5]</sup>.

The prevalence of PCNs has been reported to be twice as common in cirrhotic patients compared to the general population while their risk of pancreatic cancer is increased five-fold<sup>[6,7]</sup>. Liver transplantation (LT) is the treatment of choice for appropriately selected patients with end-stage liver cirrhosis. Limited data exist regarding whether LT and its ensuing immunosuppression influences the incidence and risk of malignant progression of PCNs. Furthermore, patient populations and immunosuppression protocols differ between LT centers worldwide, which may influence the prevalence and natural history of PCNs. LT recipients undergo regular cross-sectional abdominal imaging [computed tomography (CT) and/or magnetic resonance imaging (MRI)] as a part of hepatocellular carcinoma (HCC) screening and LT work up. The aim of this study was to determine the prevalence, characteristics and clinical course of PCNs in LT recipients in a large Australian LT center.

## MATERIALS AND METHODS

### Patients

A retrospective review of medical records for all LT recipients from January 1998 to April 2016 at Royal Prince Alfred Hospital, a quaternary state-wide LT referral center in Sydney, Australia was performed. Patient demographics, etiology of liver disease, and radiology reports of CT or MRI scans were reviewed by electronic medical records. Those with pancreatic lesions reported on abdominal imaging had their scans reviewed and further data were collected including: clinical findings including history of pancreatitis, laboratory values, histology reports, and results of fluid analysis, if available. Clinical pancreatitis was defined by the presence of two of the following three criteria: (1) characteristic abdominal pain; (2) elevated ( $\geq 3$  times the upper limit of normal) levels of serum amylase and/or lipase; or (3) characteristic findings on a CT scan<sup>[8]</sup>. Pancreatitis was attributed to the PCN if no other etiology was present *e.g.* alcohol abuse (alcoholic pancreatitis) or choledocholithiasis (gallstone pancreatitis). Patients with known chronic pancreatic disease were excluded. Outcomes measures included

growth of the PCN, the development of pancreatic adenocarcinoma, and requirement for surgical resection and mortality. Patients were otherwise followed until the date of their last abdominal CT or MRI scan. The study protocol was approved by the Sydney Local Health District Human Research Ethics Committee (X15-0426 and LNR/15/RPAH/570).

### Imaging analysis of pancreatic lesions

Abdominal imaging (either CT, MRI or both), for all patients with a pancreatic cystic lesion was reviewed by two independent radiologists. CT was performed on either GE 16 or 64 slice or Siemens SOMATOM Plus 4 spiral scanners depending on year. Either single portal venous phase (70 s after injection) or multiphase images were obtained with pre-contrast, arterial (40 s after injection), portal-venous (70 s after injection) and delayed (five minutes after injection). Magnetic resonance cholangiopancreatography (MRCP) was performed on either Siemens (3T) or GE (1.5T) magnets depending on inpatient or outpatient status. The institution's MRCP standard protocol for both magnets includes axial and coronal T2-weighted single shot fast spin echo breath-hold, respiratory triggered axial T2-weighted fast recovery fast spine echo (FRFSE), heavily-weighted axial T2 with fat suppression, axial T1-weighted pancreas in and out of phase, axial T1 pancreas fat suppressed, three-dimensional and thick slab MRCP respiratory triggered. Where indicated, gadolinium (Gadovist, Bayer Group, Germany) was administered at a rate of 1.5mL/s with pancreatic (20-40 s after injection), portal venous (65-85 s after injection) and delayed phase (three minutes and five minutes after injection) sequences obtained. Review of images was performed on a PACS-integrated workstation (Centricity RA 1000, GE Healthcare, Little Chalfont, United Kingdom).

Characterization of pancreatic cysts on imaging was performed using generally accepted imaging criteria<sup>[9,10]</sup>. A presumed imaging diagnosis of a mucinous cystadenoma was made if the cyst was unilocular with or without mild septations, located in the body or tail and with the signal intensity of simple fluid on MRI. If a unilocular or multilocular cyst demonstrated communication with a non-dilated main pancreatic duct, then a side-branch IPMN was diagnosed. If the cyst was comprised of numerous small cysts, with or without central calcification and no ductal communication on imaging, then a favored diagnosis of serous cystadenoma was given. A lesion was classified as a pseudocyst if a unilocular cyst was seen with layering debris and/or features of acute or chronic pancreatitis. In the absence of the above imaging features, a diagnosis of an undifferentiated pancreatic cyst was made. Final cyst diagnoses were also governed by results of cyst fluid analysis, cytology or histology in patients who underwent endoscopic ultrasound (EUS) with cyst aspiration or resection.

PCNs were evaluated for cyst size, multiplicity, location in the pancreas (head, body and tail). For patients with multiple PCNs, data from the largest cyst were recorded. The presence of worrisome features was also assessed including: size > 30 mm, thickened or enhancing cyst walls, dilated pancreatic duct, or solid component to the cyst<sup>[5]</sup>. The evolution of PCNs was assessed for changes in cyst size and characteristics in patients who underwent subsequent imaging.

### Statistical analysis

Categorical data was analyzed by the Pearson  $\chi^2$  test or Fisher's Exact test where appropriate. The Mann Whitney *U* test was used to analyze continuous data with non-normal distribution. Statistical analyses were performed using SPSS v.22.0 software (IBM, Armonk, NY, United States). A result was considered statistically significant if  $P < 0.05$ .

## RESULTS

### Patient characteristics

During the study period, 872 patients underwent cadaveric LT. Median age at time of LT was 60 years [interquartile range (IQR) 55-66 years]. The majority of patients were male (630/872, 72%). The most common cause of liver disease was hepatitis C (35%), followed by alcohol (15%), hepatitis B (13%), primary sclerosing cholangitis (9%), and non-alcoholic fatty liver disease (4%). HCC complicated the liver disease in 14% (126/872) of patients pre-LT.

Pancreatic cysts were identified in 53/872 (6.1%) of which 31 (3.6%) were PCNs (28 IPMNs, two MCNs, one serous cystadenoma). The other cystic lesions included: undifferentiated cyst (13/53), simple cysts (6/53) and pseudocysts (2/53). All PCNs were discovered incidentally (71% on CT, 29% on MRCP), with no prior history of pancreatitis. All undifferentiated cysts were < 30 mm in size, well-defined, round and exhibited a homogenous fluid signal. Most PCNs (22/31, 71%) were diagnosed in the last five years of the study period while 27/31 (87%) were diagnosed in the last ten years. Thirteen patients (42%) were diagnosed with PCN pre-LT while 18 patients (58%) developed PCN post-LT (Figure 1). The median age at cyst discovery was 59 years (IQR 56-62 years). Patients with PCNs exhibited less male predominance (55% vs 73%,  $P = 0.03$ ) and were comparable in terms of age at time of LT (median 62 years vs 60 years,  $P = 0.18$ ) compared to those without PCNs. There were no significant differences in etiology of liver disease in patients with and without PCN ( $P = 0.65$ ). Presence of HCC also did not differ between the two groups (10% PCN group vs 15% no PCN,  $P = 0.44$ ). The median white cell count in patients at time of PCN discovery was  $5.0 \times 10^9/L$  (IQR  $4.1-7.1 \times 10^9/L$ , normal laboratory range  $4.0-10.0 \times 10^9/L$ ). Patient



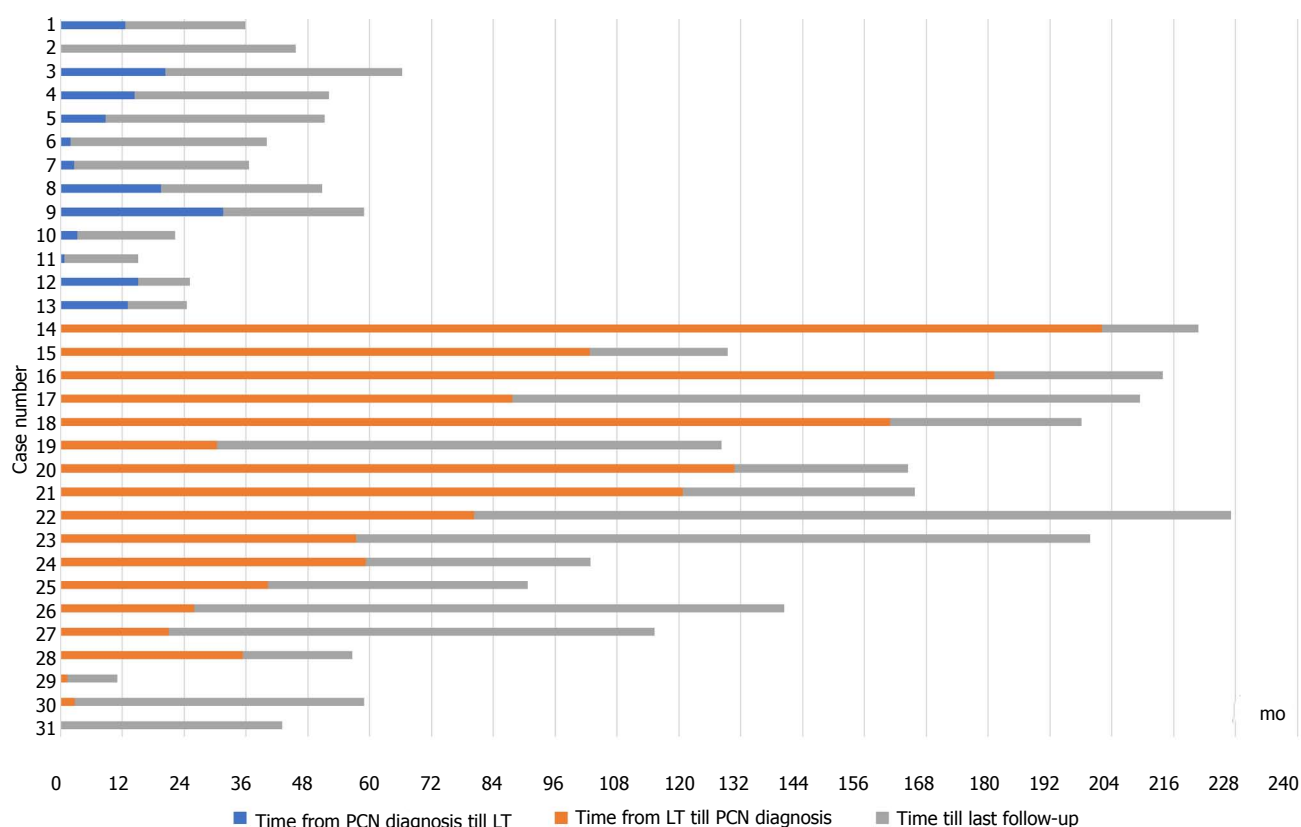


Figure 1 Time points for pancreatic cystic neoplasms diagnosis, liver transplantation and follow-up in the 31 patients with pancreatic cystic neoplasms.

characteristics comparing patients with and without PCNs are shown in Table 1.

### Pancreatic cystic neoplasm characteristics

The majority of patients with PCNs had multiple cystic lesions (20/31, 65%). Most PCNs occurred in the head of pancreas (37%) and body (37%) followed by the tail (25%). The median size of PCNs at initial diagnosis was 13 mm (IQR 10–20 mm). All 28 IPMNs were side-branch type. No PCNs exhibited worrisome features in the form of having a solid component, thickened or enhancing wall or pancreatic duct dilatation. However, three PCNs were > 30 mm in size: an IPMN at 35 mm, a MCN at 40 mm and a serous cystadenoma at 35 mm. Five patients (16%) underwent further evaluation with EUS evaluation which confirmed the suspected lesion seen on imaging (three side-branch IPMNs, two MCNs). Only one patient underwent cyst aspiration with cytology and fluid analysis. At time of cyst discovery, the median serum Ca 19.9 was 48 U/mL (IQR 35.5–112.5 U/mL, reference range < 37 U/mL) and the median serum lipase was 48 U/L (IQR 44–75 U/L, reference range 13–60 U/L).

### Outcomes

Patients with PCN were followed up for a median duration of 40 mo from date of cyst discovery (IQR 27–59 mo). Surveillance with CT, MRCP and/or EUS was performed on 25/31 (81%) patients. Two of the

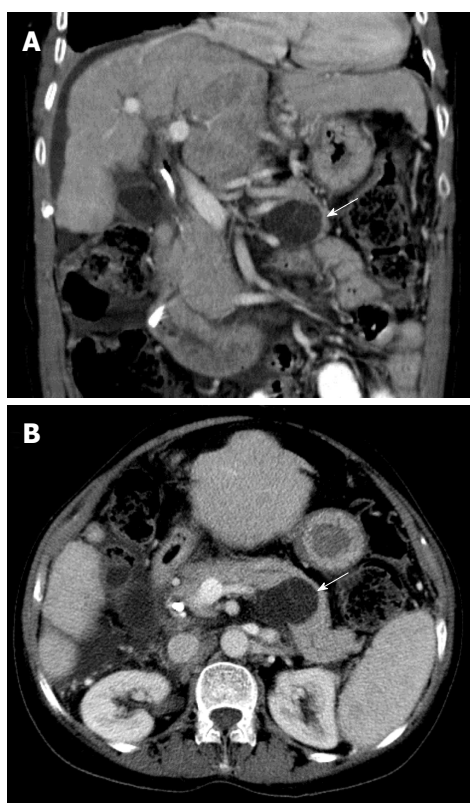
remaining six patients who did not have surveillance had only recently been diagnosed with PCNs and were not yet due for repeat imaging according to guidelines<sup>[5]</sup>. Of the patients with subsequent imaging, PCNs remained stable in size in 20/25 (80%) patients, reduced in size in 3/25 (12%) patients and increased in size in 2/25 (8%) patients. No patients developed clinical pancreatitis during follow-up.

No patient with a PCN developed pancreatic adenocarcinoma. Two patients (6%) underwent surgical resection of their PCN. Both patients had a MCN in the tail of the pancreas and underwent distal pancreatectomy and splenectomy without operative complications. The first patient was a 38-year-old woman whose MCN was discovered on routine LT assessment (for primary biliary cholangitis) initially measuring 9 mm in diameter. This subsequently grew to 17 mm and 26 mm at two and five years post-LT, respectively, which prompted the decision to resect. Histopathology revealed a MCN with intermediate dysplasia. The second patient, a 61-year-old woman, had her MCN discovered on LT assessment (for primary sclerosing cholangitis) initially measuring 40 mm in diameter. The lesion grew further to 47 mm and was subsequently resected post-LT with histopathology showing a MCN with low grade dysplasia (Figures 2 and 3). Surgical resection was not considered for the other two aforementioned patients with PCNs > 30 mm in size (one 35 mm IPMN, one 35 mm serous cystadenoma)

**Table 1** Demographics of liver transplant recipients with and without pancreatic cystic neoplasms

Characteristic	All Patients, <i>n</i> = 872	Patients with PCN, <i>n</i> = 31	Patients without PCN, <i>n</i> = 841	<i>P</i> value
Age at LT (yr)	60 (55-66)	62 (59-66)	60 (54-66)	0.18
Age at cyst PCN discovery (yr)	N/A	59 (56-62)	N/A	N/A
Males	630 (72)	17 (56)	613 (73)	0.03 <sup>a</sup>
Cause of liver disease				0.65
Hepatitis C	304 (35)	8 (26)	296 (35)	
Alcoholic liver disease	134 (15)	2 (7)	132 (16)	
Hepatitis B	109 (13)	3 (10)	106 (13)	
Primary sclerosing cholangitis	79 (9)	4 (13)	75 (9)	
Non-alcoholic fatty liver disease	39 (4)	3 (10)	36 (4)	
Primary biliary cholangitis	38 (4)	2 (7)	36 (4)	
Autoimmune hepatitis	31 (4)	2 (7)	29 (3)	
Cryptogenic	19 (2)	1 (3)	18 (2)	
Other	118 (14)	6 (19)	112 (13)	
Concomitant HCC	126 (14)	3 (10)	123 (14)	0.44

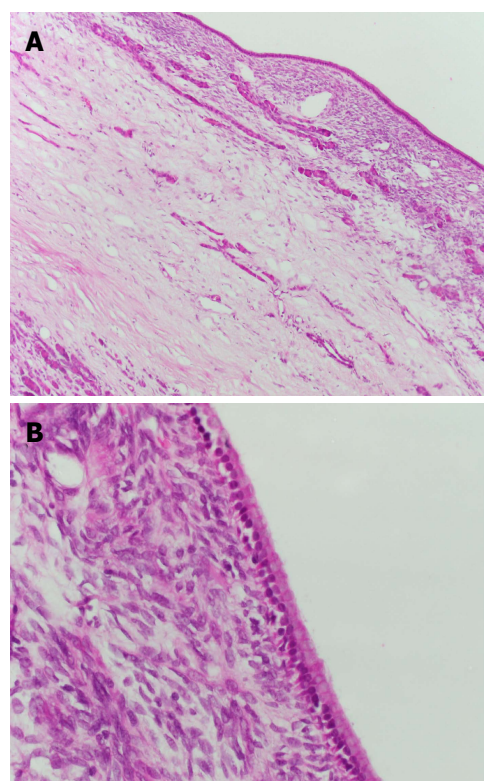
The data are shown in *n* (%) and median (interquartile range), <sup>a</sup>*P* < 0.05. HCC: hepatocellular carcinoma; PCN: pancreatic cystic neoplasm; LT: liver transplantation.



**Figure 2** Coronal (A) and axial (B) computed tomography images in portal venous phase demonstrate a well-defined low density lesion in the body/tail of the pancreas measuring 40 mm in maximum transverse dimensions (white arrows). Thin septa are demonstrated within the cyst.

due to significant medical co-morbidities.

During the follow-up period, five patients died due to acute pathologies or post-LT complications unrelated to their PCNs. Incidentally, among the patients without PCN, 1/841 (0.1%) developed metastatic pancreatic adenocarcinoma eight years after LT for hepatitis C and HCC.



**Figure 3** Lower power 100 × magnification view (A) and higher power 400 × magnification view (B) of a mucinous cystic neoplasm with low grade dysplasia. The cyst is lined by columnar mucinous epithelium with underlying ovarian-type stroma (hematoxylin-eosin stain).

## DISCUSSION

In this large cohort study of 872 LT patients, the prevalence of PCNs was found to be 3.6%. This is similar to the rate of incidental PCNs in the general population found on abdominal imaging for other indications<sup>[1,2]</sup>. Although PCNs were commonly encountered, cyst size > 30 mm (10%) and cyst enlargement on surveillance

imaging (6%) were uncommon, while the presence of other worrisome features was not seen. Accordingly, the rate of pancreatic adenocarcinoma in our study was low with no cases seen among patients with PCNs.

Patients with cirrhosis have been shown to be immune suppressed<sup>[11,12]</sup>. Furthermore, patients who undergo LT remain on life-long immunosuppressive drugs. Based on our results, the immunosuppressive effect of cirrhosis pre-LT and anti-rejection medications post-LT does not seem to alter the natural course of PCNs nor increase the risk of malignant transformation. Hence current guidelines for surveillance of PCNs can likely be safely applied in the LT population.

Our findings are consistent with other studies of PCNs in the LT setting. Vidhyakorn *et al.*<sup>[13]</sup> reported a prevalence of 3.9% (70/1778 patients) for pancreatic cystic lesions demonstrated on CT or MRI among LT recipients. Despite showing an increase in the average size and number of PCNs by 4.5mm and 1.4, respectively during the follow-up period, only one patient developed a mixed acinar-neuroendocrine carcinoma 9 years post-LT. In a French study of LT waitlist patients, IPMN was identified in 6.6% (14/212 patients) using MRI. No worrisome features, pancreatic resections or pancreatic adenocarcinomas were observed<sup>[14]</sup>. In contrast, Lennon *et al.*<sup>[15]</sup> followed 297 patients with side-branch IPMN and found high-risk features in up to 17%, potentially related to a higher proportion of patients undergoing EUS. There was no significant difference in risk of progression when comparing 23 patients who had undergone LT versus 274 patients without a history of immunosuppression. All the above authors concluded that LT does not appear to increase the risk of malignancy in patients with PCNs despite immunosuppression.

The strength of our study is the large cohort of LT patients (872 patients over 18 years) with a relatively large number of PCNs (28 IPMNs versus 14-23 in other studies). While previous studies in the LT population have focused on IPMNs<sup>[13-15]</sup>, our study is the first to describe MCNs in this setting. The two patients with MCNs were middle-aged females with single lesions located in the tail of the pancreas - hallmark characteristics of MCNs in the general population<sup>[3,4]</sup>. Surgical resection of MCNs is recommended for all surgically fit patients<sup>[5]</sup>. Both patients with MCN in our study underwent pancreatectomy post-LT with significant dysplasia seen on histopathology, however it remains unknown whether the behavior of MCNs is altered by immunosuppression. Clearly, further studies with a focus on MCNs in immunosuppressed patients are needed.

A limitation of the present study is its retrospective nature which impacts on the accuracy and completeness of the data, as well as the potential influence of length time bias. However, retrospective data collection provided the advantage of capturing patients with PCNs over an 18-year period of LT. Furthermore, our study

outcomes of PCN growth, pancreatic adenocarcinoma, surgical resection and mortality are hard endpoints which minimizes other potential biases. Although the imaging of patients without PCNs described on their initial radiological reports was not re-reviewed, all scans at our institution are reported formally by at least one experienced radiologist. Our data also suggest that awareness and identification of PCNs is increasing with most (72%) of our PCNs diagnosed in the last five years of the study period. However, the recency of these diagnoses has meant that our follow-up period in this study was relatively short (median 40 mo) which limited our ability to capture events such as cyst growth and malignancy transformation.

In conclusion, the prevalence of PCNs was 3.6% in our cohort of Australian LT patients. This is similar to that of the general population. All PCNs were discovered incidentally and over half of PCNs developed post-LT. All patients with IPMN exhibited a benign course in this study while 2/2 MCN (6% of PCNs) patients underwent surgical resection. No cases of pancreatic adenocarcinoma occurred in patients with pre-existing PCNs. These results suggest that current surveillance guidelines can likely be safely applied in the LT population.

## ARTICLE HIGHLIGHTS

### Research background

Pancreatic cystic neoplasms (PCNs) are a common incidental finding and their behaviour in liver transplantation (LT) recipients has not been well studied.

### Research motivation

By studying PCNs in the LT setting, we can observe whether the immunosuppressive effects of cirrhosis (pre-LT) and anti-rejection medications (post-LT) have any impact on PCN development and progression. This would provide important information on whether current screening and surveillance for the general population can be safely applied to these patients.

### Research objectives

We aimed to determine the prevalence, characteristics and clinical course of PCNs in LT recipients.

### Research methods

Consecutive patients who underwent LT between January 1998 to April 2016 were retrospectively studied. Clinical and laboratory data and imaging findings on computed tomography and/or magnetic resonance cholangiopancreatography were assessed.

### Research results

The prevalence of PCNs was 3.6% in our cohort of Australian LT patients which is similar to that of the general population. All PCNs were discovered incidentally and over half of PCNs developed post-LT. Only 3/31 (10%) PCNs exhibited worrisome features. All patients with intraductal papillary mucinous neoplasm (IPMN) exhibited a benign course in this study while 2/2 mucinous cystic neoplasm (MCN) (6% of PCNs) patients underwent surgical resection. No cases of pancreatic adenocarcinoma occurred in patients with pre-existing PCNs.

### Research conclusions

This is the first cohort study of PCNs in Australian LT recipients. It is also the first study to describe MCNs in the LT setting. Our results suggest that current

surveillance guidelines can likely be safely applied in the LT population. Our data also suggest that awareness and identification of PCNs is increasing with most being identified in the last five years of our study period.

### Research perspectives

It would be important to pool experience from multiple centers to improve our knowledge of the behavior of non-IPMN PCNs in the context of immunosuppression.

## ACKNOWLEDGEMENTS

We would like to thank Dr. Catriona McKenzie for her assistance with obtaining histopathology pictures for our manuscript.

## REFERENCES

- 1 Lee KS, Sekhar A, Rofsky NM, Pedrosa I. Prevalence of incidental pancreatic cysts in the adult population on MR imaging. *Am J Gastroenterol* 2010; **105**: 2079-2084 [PMID: 20354507 DOI: 10.1038/ajg.2010.122]
- 2 de Jong K, Nio CY, Hermans JJ, Dijkgraaf MG, Gouma DJ, van Eijck CH, van Heel E, Klass G, Fockens P, Bruno MJ. High prevalence of pancreatic cysts detected by screening magnetic resonance imaging examinations. *Clin Gastroenterol Hepatol* 2010; **8**: 806-811 [PMID: 20621679 DOI: 10.1016/j.cgh.2010.05.017]
- 3 Brugge WR. Diagnosis and management of cystic lesions of the pancreas. *J Gastrointest Oncol* 2015; **6**: 375-388 [PMID: 26261724 DOI: 10.3978/j.issn.2078-6891.2015.057]
- 4 Scheiman JM, Hwang JH, Moayyedi P. American gastroenterological association technical review on the diagnosis and management of asymptomatic neoplastic pancreatic cysts. *Gastroenterology* 2015; **148**: 824-848.e22 [PMID: 25805376 DOI: 10.1053/j.gastro.2015.01.014]
- 5 Tanaka M, Fernández-del Castillo C, Adsay V, Chari S, Falconi M, Jang JY, Kimura W, Levy P, Pitman MB, Schmidt CM, Shimizu M, Wolfgang CL, Yamaguchi K, Yamao K; International Association of Pancreatology. International consensus guidelines 2012 for the management of IPMN and MCN of the pancreas. *Pancreatology* 2012; **12**: 183-197 [PMID: 22687371 DOI: 10.1016/j.pan.2012.04.004]
- 6 Zerboni G, Capurso G, Di Pietropaolo M, Carbonetti F, Iannicelli E, Marignani M, Delle Fave G. The prevalence of pancreatic cystic lesions in patients with liver cirrhosis is double that in controls. *United European Gastroenterol J*. 2017 **5**:1007-1014 [PMID: 29163967 DOI: 10.1177/2050640617694576]
- 7 Kalaitzakis E, Gunnarsdottir SA, Josefsson A, Björnsson E. Increased risk for malignant neoplasms among patients with cirrhosis. *Clin Gastroenterol Hepatol* 2011; **9**: 168-174 [PMID: 21029788 DOI: 10.1016/j.cgh.2010.10.014]
- 8 Muddana V, Whitcomb DC, Papachristou GI. Current management and novel insights in acute pancreatitis. *Expert Rev Gastroenterol Hepatol* 2009; **3**: 435-444 [PMID: 19673630 DOI: 10.1586/egh.09.27]
- 9 Kalb B, Sarmiento JM, Kooby DA, Adsay NV, Martin DR. MR imaging of cystic lesions of the pancreas. *Radiographics* 2009; **29**: 1749-1765 [PMID: 19959519 DOI: 10.1148/rg.296095506]
- 10 Sahani DV, Kambadakone A, Macari M, Takahashi N, Chari S, Fernandez-del Castillo C. Diagnosis and management of cystic pancreatic lesions. *AJR Am J Roentgenol* 2013; **200**: 343-354 [PMID: 23345356 DOI: 10.2214/AJR.12.8862]
- 11 Piconese S, Timperi E, Barnaba V. 'Hardcore' OX40+ immunosuppressive regulatory T cells in hepatic cirrhosis and cancer. *Oncoimmunology* 2014; **3**: e29257 [PMID: 25083337 DOI: 10.4161/onci.29257]
- 12 O'Brien AJ, Fullerton JN, Massey KA, Auld G, Sewell G, James S, Newson J, Karra E, Winstanley A, Alazawi W, Garcia-Martinez R, Cordoba J, Nicolaou A, Gilroy DW. Immunosuppression in acutely decompensated cirrhosis is mediated by prostaglandin E2. *Nat Med* 2014; **20**: 518-523 [PMID: 24728410 DOI: 10.1038/nm.3516]
- 13 Vidhyakorn S, Siripongsakun S, Yu J, Sayre J, Agopian VG, Durazo F, Lu DS. Longterm follow-up of small pancreatic cystic lesions in liver transplant recipients. *Liver Transpl* 2017; **23**: 324-329 [PMID: 27875639 DOI: 10.1002/lt.24680]
- 14 Laurent L, Vullierme MP, Rebours V, Maire F, Hentic O, Francoz C, Durand F, Ruszniewski P, Lévy P. Estimation of the prevalence of intraductal papillary mucinous neoplasm of the pancreas in the French population through patients waiting for liver transplantation. *United European Gastroenterol J* 2017; **5**: 499-503 [PMID: 28588880 DOI: 10.1177/2050640616664842]
- 15 Lennon AM, Victor D, Zaheer A, Ostovaneh MR, Jeh J, Law JK, Rezaee N, Molin MD, Ahn YJ, Wu W, Khashab MA, Girotra M, Ahuja N, Makary MA, Weiss MJ, Hirose K, Goggins M, Hruban RH, Cameron A, Wolfgang CL, Singh VK, Gurakar A. Liver transplant patients have a risk of progression similar to that of sporadic patients with branch duct intraductal papillary mucinous neoplasms. *Liver Transpl* 2014; **20**: 1462-1467 [PMID: 25155689 DOI: 10.1002/lt.23983]

P- Reviewer: Gong JS, Gupta R, Matsuda Y S- Editor: Chen K  
L- Editor: A E- Editor: Ma YJ







Published by **Baishideng Publishing Group Inc**  
7901 Stoneridge Drive, Suite 501, Pleasanton, CA 94588, USA  
Telephone: +1-925-223-8242  
Fax: +1-925-223-8243  
E-mail: [bpgoffice@wjgnet.com](mailto:bpgoffice@wjgnet.com)  
Help Desk: <http://www.f6publishing.com/helpdesk>  
<http://www.wjgnet.com>



ISSN 1007-9327



9 771007 932045