

# World Journal of *Gastroenterology*

*World J Gastroenterol* 2018 February 7; 24(5): 549-656



### REVIEW

- 549 Behind the curtain of non-coding RNAs; long non-coding RNAs regulating hepatocarcinogenesis  
*El Khodiry A, Afify M, El Tayebi HM*

### ORIGINAL ARTICLE

#### Basic Study

- 573 Hsa-miR-202-3p, up-regulated in type 1 gastric neuroendocrine neoplasms, may target *DUSP1*  
*Dou D, Shi YF, Liu Q, Luo J, Liu JX, Liu M, Liu YY, Li YL, Qiu XD, Tan HY*
- 583 Enteral nutrition combined with glutamine promotes recovery after ileal pouch-anal anastomosis in rats  
*Xu YY, He AQ, Liu G, Li KY, Liu J, Liu T*
- 593 Promotion of Sema4D expression by tumor-associated macrophages: Significance in gastric carcinoma  
*Li H, Wang JS, Mu LJ, Shan KS, Li LP, Zhou YB*

#### Case Control Study

- 602 Impact of SNP-SNP interactions of DNA repair gene *ERCC5* and metabolic gene *GSTP1* on gastric cancer/atrophic gastritis risk in a Chinese population  
*Sang L, Lv Z, Sun LP, Xu Q, Yuan Y*

#### Retrospective Cohort Study

- 613 Incidence of hepatocellular carcinoma in patients with chronic liver disease due to hepatitis B or C and coinfectd with the human immunodeficiency virus: A retrospective cohort study  
*Marcon PS, Tovo CV, Kliemann DA, Fisch P, de Mattos AA*

#### Retrospective Study

- 623 Impaired granulocyte-macrophage colony-stimulating factor bioactivity accelerates surgical recurrence in ileal Crohn's disease  
*Gathungu G, Zhang Y, Tian X, Bonkowski E, Rowehl L, Krumsiek J, Nix B, Chalk C, Trapnell B, Zhu W, Newberry R, Denson L, Li E*
- 631 *PIK3CA* and *TP53* mutations predict overall survival of stage II/III colorectal cancer patients  
*Li AJ, Li HG, Tang EJ, Wu W, Chen Y, Jiang HH, Lin MB, Yin L*

#### Observational Study

- 641 Faecal calprotectin and magnetic resonance imaging in detecting Crohn's disease endoscopic postoperative recurrence  
*Baillet P, Cadiot G, Goutte M, Goutorbe F, Brixi H, Hoeffel C, Allimant C, Reymond M, Obritin-Guilhen H, Magnin B, Bommelaer G, Pereira B, Hordonneau C, Buisson A*

**CASE REPORT**

- 651 Sequential spinal and intracranial dural metastases in gastric adenocarcinoma: A case report

*Kim H, Yi KS, Kim WD, Son SM, Yang Y, Kwon J, Han HS*

## ABOUT COVER

Editorial board member of *World Journal of Gastroenterology*, George P Karamanolis, PhD, Assistant Professor, Academic Gastroenterology Department, Medical School, National and Kapodistrian University Of Athens, Athens 11527, Greece

## AIMS AND SCOPE

*World Journal of Gastroenterology* (*World J Gastroenterol*, *WJG*, print ISSN 1007-9327, online ISSN 2219-2840, DOI: 10.3748) is a peer-reviewed open access journal. *WJG* was established on October 1, 1995. It is published weekly on the 7<sup>th</sup>, 14<sup>th</sup>, 21<sup>st</sup>, and 28<sup>th</sup> each month. The *WJG* Editorial Board consists of 642 experts in gastroenterology and hepatology from 59 countries.

The primary task of *WJG* is to rapidly publish high-quality original articles, reviews, and commentaries in the fields of gastroenterology, hepatology, gastrointestinal endoscopy, gastrointestinal surgery, hepatobiliary surgery, gastrointestinal oncology, gastrointestinal radiation oncology, gastrointestinal imaging, gastrointestinal interventional therapy, gastrointestinal infectious diseases, gastrointestinal pharmacology, gastrointestinal pathophysiology, gastrointestinal pathology, evidence-based medicine in gastroenterology, pancreatology, gastrointestinal laboratory medicine, gastrointestinal molecular biology, gastrointestinal immunology, gastrointestinal microbiology, gastrointestinal genetics, gastrointestinal translational medicine, gastrointestinal diagnostics, and gastrointestinal therapeutics. *WJG* is dedicated to become an influential and prestigious journal in gastroenterology and hepatology, to promote the development of above disciplines, and to improve the diagnostic and therapeutic skill and expertise of clinicians.

## INDEXING/ABSTRACTING

*World Journal of Gastroenterology* (*WJG*) is now indexed in Current Contents<sup>®</sup>/Clinical Medicine, Science Citation Index Expanded (also known as SciSearch<sup>®</sup>), Journal Citation Reports<sup>®</sup>, Index Medicus, MEDLINE, PubMed, PubMed Central and Directory of Open Access Journals. The 2017 edition of Journal Citation Reports<sup>®</sup> cites the 2016 impact factor for *WJG* as 3.365 (5-year impact factor: 3.176), ranking *WJG* as 29<sup>th</sup> among 79 journals in gastroenterology and hepatology (quartile in category Q2).

## EDITORS FOR THIS ISSUE

Responsible Assistant Editor: *Xiang Li*  
Responsible Electronic Editor: *Yan Huang*  
Proofing Editor-in-Chief: *Lian-Sheng Ma*

Responsible Science Editor: *Ze-Mao Gong*  
Proofing Editorial Office Director: *Jin-Lei Wang*

NAME OF JOURNAL  
*World Journal of Gastroenterology*

ISSN  
ISSN 1007-9327 (print)  
ISSN 2219-2840 (online)

LAUNCH DATE  
October 1, 1995

FREQUENCY  
Weekly

EDITORS-IN-CHIEF  
**Damian Garcia-Olmo, MD, PhD, Doctor, Professor, Surgeon**, Department of Surgery, Universidad Autonoma de Madrid; Department of General Surgery, Fundacion Jimenez Diaz University Hospital, Madrid 28040, Spain

**Stephen C Strom, PhD, Professor**, Department of Laboratory Medicine, Division of Pathology, Karolinska Institutet, Stockholm 141-86, Sweden

**Andrzej S Tarnawski, MD, PhD, DSc (Med), Professor of Medicine, Chief Gastroenterology**, VA Long Beach Health Care System, University of California, Irvine, CA, 5901 E. Seventh Str., Long Beach,

CA 90822, United States

EDITORIAL BOARD MEMBERS  
All editorial board members resources online at <http://www.wjgnet.com/1007-9327/editorialboard.htm>

EDITORIAL OFFICE  
**Ze-Mao Gong, Director**  
*World Journal of Gastroenterology*  
Baishideng Publishing Group Inc  
7901 Stoneridge Drive, Suite 501,  
Pleasanton, CA 94588, USA  
Telephone: +1-925-2238242  
Fax: +1-925-2238243  
E-mail: [editorialoffice@wjgnet.com](mailto:editorialoffice@wjgnet.com)  
Help Desk: <http://www.f6publishing.com/helpdesk>  
<http://www.wjgnet.com>

PUBLISHER  
Baishideng Publishing Group Inc  
7901 Stoneridge Drive, Suite 501,  
Pleasanton, CA 94588, USA  
Telephone: +1-925-2238242  
Fax: +1-925-2238243  
E-mail: [bpgoffice@wjgnet.com](mailto:bpgoffice@wjgnet.com)  
Help Desk: <http://www.f6publishing.com/helpdesk>  
<http://www.wjgnet.com>

PUBLICATION DATE  
February 7, 2018

COPYRIGHT  
© 2018 Baishideng Publishing Group Inc. Articles published by this Open-Access journal are distributed under the terms of the Creative Commons Attribution Non-commercial License, which permits use, distribution, and reproduction in any medium, provided the original work is properly cited, the use is non commercial and is otherwise in compliance with the license.

SPECIAL STATEMENT  
All articles published in journals owned by the Baishideng Publishing Group (BPG) represent the views and opinions of their authors, and not the views, opinions or policies of the BPG, except where otherwise explicitly indicated.

INSTRUCTIONS TO AUTHORS  
Full instructions are available online at <http://www.wjgnet.com/bpg/gerinfo/204>

ONLINE SUBMISSION  
<http://www.f6publishing.com>

## Sequential spinal and intracranial dural metastases in gastric adenocarcinoma: A case report

Hongsik Kim, Kyung Sik Yi, Won-Dong Kim, Seung-Myoung Son, Yaewon Yang, Jihyun Kwon, Hye Sook Han

Hongsik Kim, Yaewon Yang, Jihyun Kwon, Hye Sook Han, Department of Internal Medicine, Chungbuk National University Hospital, Seowon-gu, Cheongju 28644, South Korea

Kyung Sik Yi, Department of Radiology, Chungbuk National University Hospital, Seowon-gu, Cheongju 28644, South Korea

Won-Dong Kim, Department of Radiation Oncology, College of Medicine, Chungbuk National University, Seowon-gu, Cheongju 28644, South Korea

Won-Dong Kim, Department of Radiation Oncology, Chungbuk National University Hospital, Seowon-gu, Cheongju 28644, South Korea

Seung-Myoung Son, Department of Pathology, Chungbuk National University Hospital, Seowon-gu, Cheongju 28644, South Korea

Hye Sook Han, Department of Internal Medicine, College of Medicine, Chungbuk National University, Seowon-gu, Cheongju 28644, South Korea

ORCID number: Hongsik Kim (0000-0002-9469-6699); Kyung Sik Yi (0000-0002-4274-8610); Won-Dong Kim (0000-0003-4766-3787); Seung-Myoung Son (0000-0002-1646-4649); Yaewon Yang (0000-0002-1773-134X); Jihyun Kwon (0000-0001-8128-3310); Hye Sook Han (0000-0001-6729-8700).

**Author contributions:** Kim H and Han HS designed the report; Kim H, Yi KS, Kim WD, Son SM and Han HS collected the patient's clinical data; Kim H, Yang Y, Kwon J and Han HS contributed to data interpretation and drafting of the article; all authors read and approved the final version of this manuscript.

**Informed consent statement:** Written informed consent for publication of this case report and associated images was obtained from the patient.

**Conflict-of-interest statement:** All the authors have no conflicts of interests to declare.

**Open-Access:** This article is an open-access article which was selected by an in-house editor and fully peer-reviewed by external reviewers. It is distributed in accordance with the Creative Commons Attribution Non Commercial (CC BY-NC 4.0) license, which permits others to distribute, remix, adapt, build upon this work non-commercially, and license their derivative works on different terms, provided the original work is properly cited and the use is non-commercial. See: <http://creativecommons.org/licenses/by-nc/4.0/>

**Manuscript source:** Unsolicited manuscript

**Correspondence to:** Hye Sook Han, MD, PhD, Associate Professor, Department of Internal Medicine, College of Medicine, Chungbuk National University, Chungdae-ro 1, Seowon-gu, Cheongju, 28644, South Korea. [sook3529@hanmail.net](mailto:sook3529@hanmail.net)  
Telephone: +82-43-2696306  
Fax: +82-43-273-32

**Received:** November 13, 2017

**Peer-review started:** November 14, 2017

**First decision:** December 6, 2017

**Revised:** December 10, 2017

**Accepted:** December 26, 2017

**Article in press:** December 26, 2017

**Published online:** February 7, 2018

### Abstract

Dural metastasis from primary gastric adenocarcinoma has been rarely reported, and its prognosis is very poor because it frequently leads to acute subdural hematoma. Here, we describe a case with sequential spinal and cranial dural metastases from gastric adenocarcinoma without subdural hematoma. A 43-year-old woman with gastric adenocarcinoma and well-controlled peritoneal carcinomatosis presented with back pain, right radiating leg pain, left facial palsy, and hearing loss. Magnetic resonance imaging of the spine



and brain revealed dural masses at the lumbosacral junction with invasion to the L5 and S1 nerve roots and at the skull base with invasion to the internal auditory canal. She was treated with local radiotherapy, and her pain and neurologic symptoms improved after palliative radiotherapy. This is the first reported case of dural metastases of gastric adenocarcinoma of the spine and skull base but with a relatively indolent course and without subdural hematoma.

**Key words:** Adenocarcinoma; Gastric; Metastasis; Dura; Radiotherapy

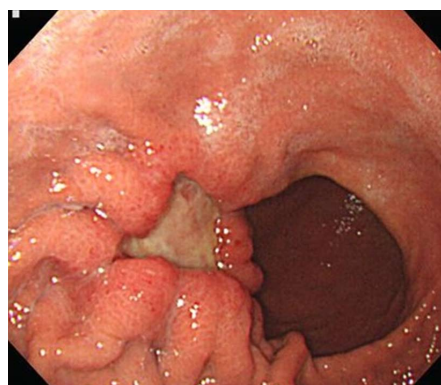
© **The Author(s) 2018.** Published by Baishideng Publishing Group Inc. All rights reserved.

**Core tip:** Although gastric adenocarcinoma can metastasize to almost any organ, metastasis to the dura mater is rarely reported. Here, we report a rare and clinically meaningful case of dural metastases to the spine and skull base from gastric adenocarcinoma that was treated with palliative local radiotherapy. This is the first reported case of dural metastases of gastric adenocarcinoma of the spine and skull base with involvement of the surrounding structures but with a relatively indolent course and without subdural hematoma. Local radiotherapy was effective for the relief of neurologic symptoms.

Kim H, Yi KS, Kim WD, Son SM, Yang Y, Kwon J, Han HS. Sequential spinal and intracranial dural metastases in gastric adenocarcinoma: A case report. *World J Gastroenterol* 2018; 24(5): 651-656 Available from: URL: <http://www.wjgnet.com/1007-9327/full/v24/i5/651.htm> DOI: <http://dx.doi.org/10.3748/wjg.v24.i5.651>

## INTRODUCTION

Gastric cancer is the fourth most frequent malignancy and the second most common cause of cancer-related death in the world<sup>[1]</sup>; it is also the second most frequent malignancy in Korea<sup>[2]</sup>. Although patients with early gastric cancer can be cured by surgical resection, a large majority of patients relapse after surgical resection or are initially diagnosed with metastatic disease. The most common metastatic sites of gastric cancer are the liver, peritoneum, lymph nodes, lung, and bone<sup>[3]</sup>. Central nervous system metastasis is a very rare manifestation of gastric cancer, occurring in 0.16-0.69% of patients, and mostly consists of brain parenchymal metastasis or leptomeningeal carcinomatosis<sup>[4]</sup>. Dural metastasis of all central nervous system metastasis has been rarely reported in cases of gastric cancer<sup>[5-9]</sup>. Here, we report a rare and clinically meaningful case of dural metastases from gastric adenocarcinoma that was



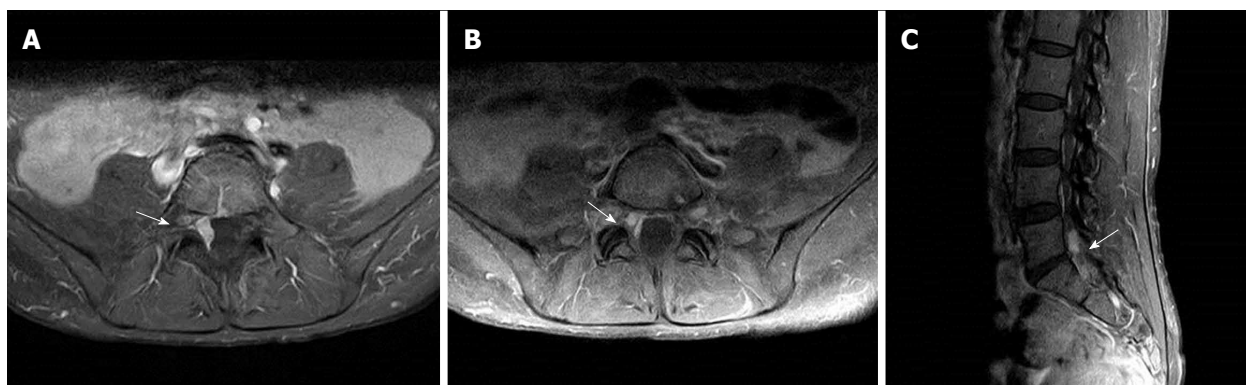
**Figure 1** Esophagogastroduodenoscopy revealed a 3-cm sized ulcerofungating mass on the anterior wall of the greater curvature of the gastric body.

treated with palliative local radiotherapy.

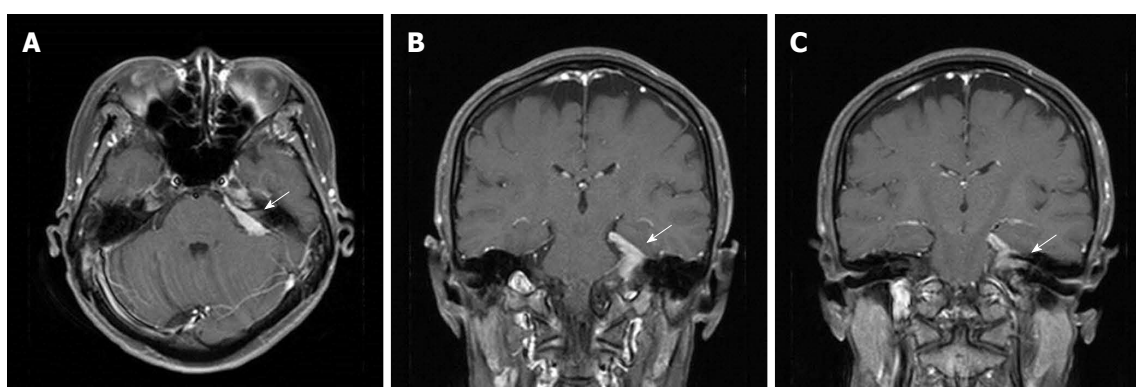
## CASE REPORT

A 43-year-old woman with metastatic gastric cancer presented with a 1-wk history of progressively worsening lower back and radiating right leg pain in December 2016. Physical examination revealed mild numbness at the right inner thigh, but there were no abnormal findings, including sensory abnormalities or motor weakness in the lower extremities, on physical examination. She had a history of advanced gastric adenocarcinoma that was diagnosed in September 2014. Esophagogastroduodenoscopy revealed a 3-cm sized ulcerofungating mass on the anterior wall of the greater curvature of the gastric body (Figure 1), and endoscopic biopsy confirmed a histologic diagnosis of poorly cohesive carcinoma. A computed tomography (CT) scan of the abdomen revealed lymph node enlargement in the perigastric area and no evidence of metastasis, the clinical stage was determined as T3N1M0, cStage III. She underwent a subtotal gastrectomy with D2 lymph node dissection, and the postoperative pathologic findings were poorly cohesive carcinoma (pT4aN2M0, pStage III B).

The patient was treated with adjuvant capecitabine and oxaliplatin chemotherapy for 6 mo. However, in September 2015, she was diagnosed with ovarian metastasis and peritoneal carcinomatosis. She was treated with cytoreductive surgery and hyperthermic intraperitoneal chemotherapy followed by systemic chemotherapy (2<sup>nd</sup> line paclitaxel and 3<sup>rd</sup> line irinotecan) until December 2016. Magnetic resonance imaging (MRI) of the lumbosacral spine revealed an enhancing dural mass at the lumbosacral junction with invasion to the right L5 and S1 nerve roots (Figure 2). She was treated with 3D conformal radiotherapy of 36 Gy in 12 fractions to the lumbosacral junction under a diagnosis of spinal dural metastasis from gastric adenocarcinoma.



**Figure 2** Magnetic resonance imaging of the lumbosacral spine. Axial (A, B) and sagittal (C) contrast-enhanced T1-weighted imaging of the spine MRI shows a focal dural mass with invasion to the right L5 and S1 nerve roots at the L5-S1 level. MRI: Magnetic resonance imaging.



**Figure 3** Magnetic resonance imaging of the brain. On axial (A) and coronal (B and C) contrast-enhanced T1-weighted imaging of the brain MRI, a homogenous, enhancing dural mass is visible at the left cerebellopontine angle cistern (A and B) invading the left trigeminal nerve and internal auditory canal (C). MRI: Magnetic resonance imaging.

Her lower back and radiating right leg pain abated after palliative radiotherapy.

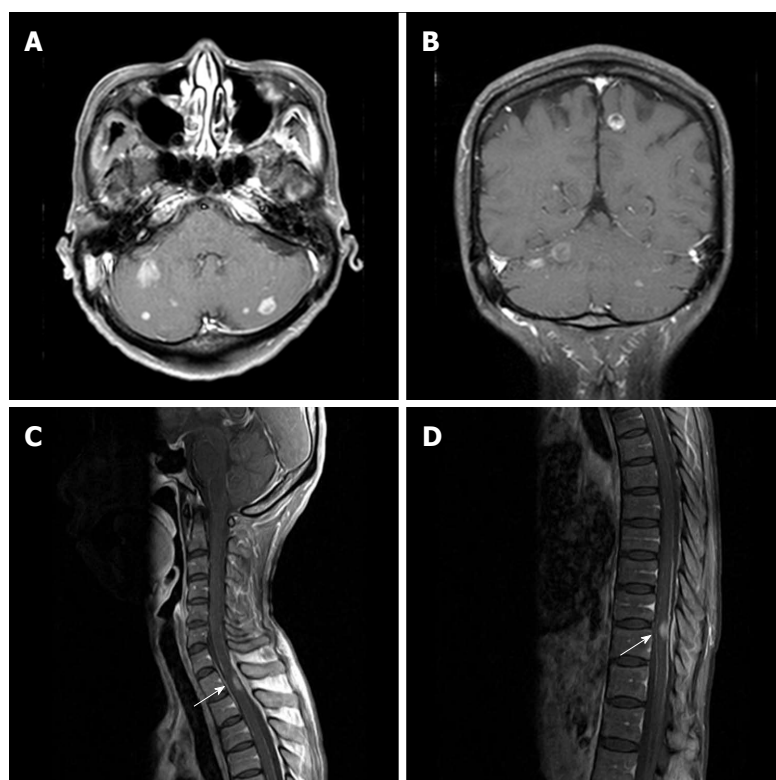
At 3 mo later, in April 2017, she presented with a 2-wk history of a progressively worsening loss of sensation on the left side of the face and hearing loss in the left ear. On physical examination, she showed numbness of the left face and tongue, and motor weakness of the chewing muscles. Pure-tone audiometry showed left side deafness. MRI of the brain revealed an enhancing dural lesion at the left cerebellopontine angle with extension to the trigeminal nerve and internal auditory canal (Figure 3). There was no evidence of other distant metastases upon CT scan of the thorax, abdomen, and pelvis. She was treated with intensity modulated radiotherapy of 40 Gy in 10 fractions to the dural mass at the left skull base under a diagnosis of cranial dural metastasis from gastric adenocarcinoma. Her left hearing loss did not improve, but the left facial palsy improved after palliative radiotherapy.

However, in October 2017, she presented with a radiating right upper arm pain and headache 8 mo after the initial diagnosis of dural metastasis from gastric adenocarcinoma. MRI of the brain revealed

multiple enhancing lesions at the cerebral and cerebellar hemispheres, and MRI of the spine revealed enhancing lesions at spinal cord at T1/2 and T10/11 (Figure 4). Moreover, metastatic adenocarcinoma cells were observed by cerebrospinal fluid cytology. She was treated with palliative radiotherapy to the whole brain and intramedullary lesion at T1/2, and received intrathecal methotrexate chemotherapy. However, she died of progressive disease 10 mo after the initial diagnosis of dural metastasis from gastric adenocarcinoma.

## DISCUSSION

Dural metastases of extraneuronal malignancies are detected in approximately 10% of autopsy cases<sup>[10]</sup>. The relatively common neoplasms associated with dural metastasis are breast, prostate, lung cancer, melanoma and hematologic malignancies<sup>[11,12]</sup>. However, dural metastasis in gastric adenocarcinoma has been rarely reported<sup>[5-9]</sup>. Direct extension of bone metastases and direct hematogenous spread have been proposed as mechanisms for the spread of extraneuronal malignancies to the dura<sup>[11,12]</sup>. Dural metastases are usually



**Figure 4** Magnetic resonance imaging of the brain and spine. On axial (A) and coronal (B) contrast-enhanced T1-weighted imaging of the brain MRI revealed multiple enhancing nodules at the cerebral and cerebellar hemispheres. On sagittal contrast-enhanced T1-weighted imaging of the spine MRI revealed eccentric nodular enhancement at spinal cord at T1/2 (C) and T10/11 (D). MRI: Magnetic resonance imaging.

a late manifestation of the malignant disease, which contributes greatly to the severity of the prognosis. The lesions often remain clinically asymptomatic, but they may become symptomatic due to mass effect or the accumulation of subdural fluids, including acute or chronic hematomas and malignant effusion.

The available literature suggests a poor prognosis for patients presenting with dural metastases, although this is most likely a reflection of the disseminated nature of the underlying disease rather than a direct consequence of dural involvement<sup>[11,12]</sup>. Survival varies considerably according to the primary tumor type and the extent of the systemic disease; favorable courses are generally observed in primary breast, prostate, renal cell carcinoma, and hematologic malignancy. Dural metastasis from primary gastric adenocarcinoma has been rarely reported, and its prognosis is very poor because the prognosis of metastatic gastric adenocarcinoma itself is poor and because it frequently leads to subdural hematoma<sup>[5-9]</sup>. The prognosis of subdural hematoma caused by dural metastasis is extremely poor, and in most reported cases, the patients died within a short period of time<sup>[9]</sup>.

Several mechanisms have been proposed for the formation of subdural hematomas associated with dural metastasis. Obstruction of the dural veins by tumor cells can cause dilatation of the capillaries in the inner

areolar layer, followed by rupture and subdural hemorrhage. Infiltration of the dura by malignant cells can also induce an angiodesmoplastic reaction, resulting in the formation of an abnormal neomembrane that is highly vascular, into which hemorrhage can occur more easily<sup>[8,9,11]</sup>. Kunii *et al.*<sup>[13]</sup> analyzed 51 reported cases of subdural hematoma and found that the most common histological type in which subdural hematoma occurred was adenocarcinoma and the most common primary tumor site was the stomach. In our case, unlike in the previously reported cases of dural metastasis from gastric adenocarcinoma, acute or chronic subdural hematoma did not develop and the course of the disease was relatively indolent, as is more commonly seen in breast or prostate cancer.

No standard of treatment has been clearly defined for the management of dural metastasis. High-dose dexamethasone can produce symptom relief even in the absence of cerebral edema, and evacuation of symptomatic subdural hematoma should be considered. Surgical resection is rarely performed and is reserved for single metastatic lesions causing severe symptoms. Stereotactic radiosurgery or local radiotherapy either alone or in combination with whole brain radiotherapy seems to be a safe and effective treatment option<sup>[11,12]</sup>. Therefore, the therapeutic approach employed should be chosen based on the individual condition of each



patient. In the described case, local radiotherapy was performed because the systemic cancer was controlled and there was no subdural hematoma. As a result, cancer pain and neurologic deficits caused by the dural mass were effectively controlled.

This case differs in some ways from the previously reported cases of gastric adenocarcinoma with dural metastasis. First, this case was not associated with subdural hematoma or fluid collection. Second, dural metastases in the previous cases occurred in the dura mater around the cerebral cortex, but in this case, metastases occurred sequentially in the dura mater around the spinal canal and skull base. Therefore, while in the previously reported cases the main symptoms were associated with invasion to the underlying brain parenchyma, resulting in elevated intracranial pressure, in this case the patient presented with lower back pain and symptoms associated with trigeminal nerve palsy. Third, the lesions in this case were spread widely along the dura mater, and there was invasion of the surrounding structures. The initial, spinal dural metastasis caused invasion to the L5 and S1 nerve roots, resulting in radiating leg pain, and the second, cranial dural metastasis at the skull base caused invasion to the internal auditory canal, resulting in hearing loss.

This is the first reported case of gastric adenocarcinoma metastasizing sequentially to the dura mater in the spinal canal and skull base without subdural hematoma. Although these circumstances are rare, local radiotherapy may be effective for the relief of neurologic symptoms in cases of dural metastasis of gastric adenocarcinoma with an indolent course and controlled systemic disease.

## ARTICLE HIGHLIGHTS

### Case characteristics

A 43-year-old woman with gastric adenocarcinoma presented with back pain, right radiating leg pain, left facial palsy, and hearing loss.

### Clinical diagnosis

Spinal and brain metastases were suspected.

### Differential diagnosis

Spinal bone metastasis, brain parenchymal metastasis or leptomeningeal carcinomatosis.

### Laboratory diagnosis

All laboratory tests were within normal limits.

### Imaging diagnosis

Magnetic resonance imaging of the spine and brain revealed dural masses at the lumbosacral junction with invasion to the L5 and S1 nerve roots and at the skull base with invasion to the internal auditory canal.

### Pathological diagnosis

The postoperative pathologic findings were poorly cohesive carcinoma and the

patient was diagnosed with advanced gastric adenocarcinoma.

### Treatment

The patient was treated with palliative local radiotherapy.

### Related reports

Dural metastasis from primary gastric adenocarcinoma has been rarely reported, and its prognosis is very poor because it frequently leads to subdural hematoma. The prognosis of subdural hematoma caused by dural metastasis is extremely poor, and in most reported cases, the patients died within a short period of time.

### Term explanation

Dural metastasis, also named pachymeningeal metastasis, refers to metastasis to the dura mater within the craniospinal axis.

### Experiences and lessons

Although dural metastasis from primary gastric adenocarcinoma has been rarely reported, local radiotherapy may be effective for the relief of neurologic symptoms in cases of dural metastasis of gastric adenocarcinoma with an indolent course and controlled systemic disease.

## REFERENCES

- 1 Siegel RL, Miller KD, Jemal A. Cancer Statistics, 2017. *CA Cancer J Clin* 2017; **67**: 7-30 [PMID: 28055103 DOI: 10.3322/caac.21387]
- 2 Jung KW, Won YJ, Oh CM, Kong HJ, Lee DH, Lee KH; Community of Population-Based Regional Cancer Registries. Cancer Statistics in Korea: Incidence, Mortality, Survival, and Prevalence in 2014. *Cancer Res Treat* 2017; **49**: 292-305 [PMID: 28279062 DOI: 10.4143/crt.2017.118]
- 3 Deng J, Liang H, Wang D, Sun D, Pan Y, Liu Y. Investigation of the recurrence patterns of gastric cancer following a curative resection. *Surg Today* 2011; **41**: 210-215 [PMID: 21264756 DOI: 10.1007/s00595-009-4251-y]
- 4 Kasakura Y, Fujii M, Mochizuki F, Suzuki T, Takahashi T. Clinicopathological study of brain metastasis in gastric cancer patients. *Surg Today* 2000; **30**: 485-490 [PMID: 10883456 DOI: 10.1007/s005950070112]
- 5 Katsube T, Kikuchi T, Konno S, Murayama M, Kobayashi R, Kuhara K, Yoshimatsu K, Shiozawa S, Shimakawa T, Naritaka Y, Ogawa K, Hagiwara S, Aiba M. Subdural hematoma associated with dural metastasis of gastric carcinoma: report of two cases. *Anticancer Res* 2007; **27**: 4339-4344 [PMID: 18214041]
- 6 Mirsadeghi SM, Habibi Z, Meybodi KT, Nejat F, Tabatabai SA. Malignant subdural effusion associated with disseminated adenocarcinoma: a case report. *Cases J* 2008; **1**: 328 [PMID: 19019205 DOI: 10.1186/1757-1626-1-328]
- 7 Kuan-Yin T, Dueng-Yuan H, Hsin-I M. Subdural hematoma associated with skull and dural metastasis of gastric carcinoma: a case report. *Turk Neurosurg* 2013; **23**: 796-799 [PMID: 24310465 DOI: 10.5137/1019-5149.JTN.3696-10.3]
- 8 Yuan X, Zhao H, Zhao C, Xiao H, Sun G, Bai Y, Niu J. Chronic subdural hematoma due to dural metastasis of gastric adenocarcinoma progressing rapidly with uncal herniation. *J Craniofac Surg* 2014; **25**: 2270-2272 [PMID: 25347602 DOI: 10.1097/SCS.0000000000001170]
- 9 Kimura S, Kotani A, Takimoto T, Yoshino A, Katayama Y. Acute aggravation of subdural fluid collection associated with dural metastasis of malignant neoplasms: case report and review of the literature. *Brain Tumor Pathol* 2014; **31**: 299-303 [PMID: 24036578 DOI: 10.1007/s10014-013-0162-0]
- 10 Meyer PC, Reah TG. Secondary neoplasms of the central nervous system and meninges. *Br J Cancer* 1953; **7**: 438-448 [PMID:

13126386]

- 11 **Laigle-Donadey F**, Taillibert S, Mokhtari K, Hildebrand J, Delattre JY. Dural metastases. *J Neurooncol* 2005; **75**: 57-61 [PMID: 16215816 DOI: 10.1007/s11060-004-8098-1]
- 12 **Nayak L**, Abrey LE, Iwamoto FM. Intracranial dural metastases. *Cancer* 2009; **115**: 1947-1953 [PMID: 19241421 DOI: 10.1002/cncr.24203]
- 13 **Kunii N**, Morita A, Yoshikawa G, Kirino T. Subdural hematoma associated with dural metastasis--case report--. *Neurol Med Chir (Tokyo)* 2005; **45**: 519-522 [PMID: 16247237]

**P- Reviewer:** Sugimoto M **S- Editor:** Gong ZM  
**L- Editor:** Filipodia **E- Editor:** Huang Y





Published by **Baishideng Publishing Group Inc**  
7901 Stoneridge Drive, Suite 501, Pleasanton, CA 94588, USA  
Telephone: +1-925-223-8242  
Fax: +1-925-223-8243  
E-mail: [bpgoffice@wjgnet.com](mailto:bpgoffice@wjgnet.com)  
Help Desk: <http://www.f6publishing.com/helpdesk>  
<http://www.wjgnet.com>



ISSN 1007-9327

